



NOAA - National Weather Service

Tampa Bay Area

2525 14th Avenue SE, Ruskin, Florida 33570

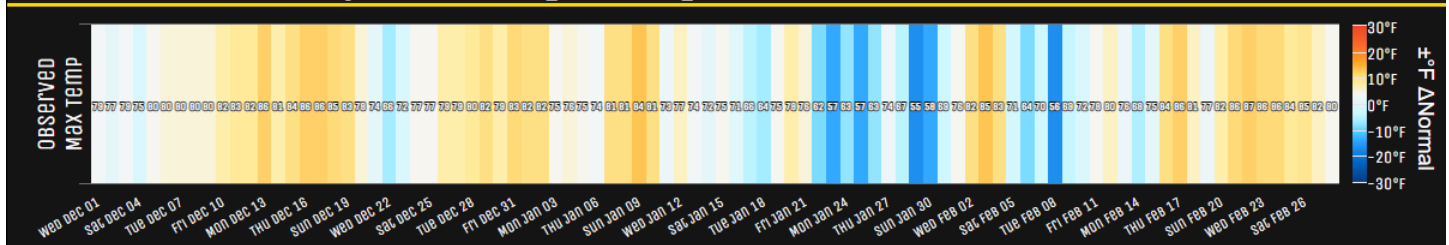
813-645-2323 <https://weather.gov/tampabay>

February 2022 and Winter 2021-22 Climate Summary

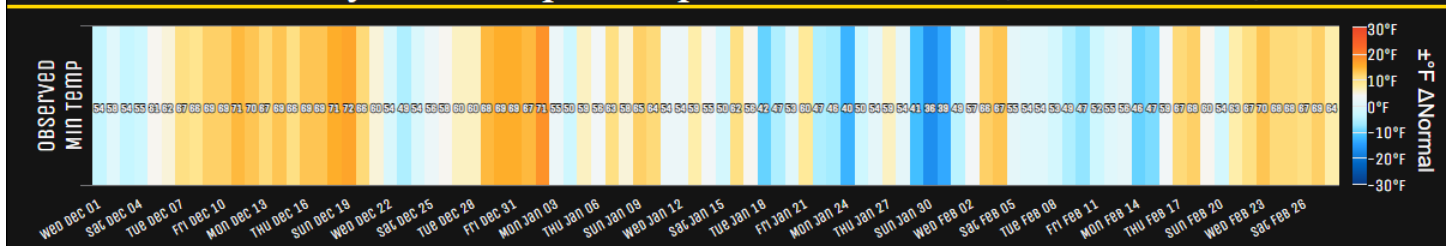
This winter the ENSO (El Niño Southern Oscillation) was in a La Niña phase which usually means that we'll see overall temperatures near to slightly above normal for the season while rainfall will be below normal. This overall pattern was accurate for most of West Central and Southwest Florida. We started the season above normal in December into mid-January, then during the second half of January, we saw a wide range in temperatures, but for the month ended up only slightly below to slightly above normal. For February we had some cooler days in the first half of the month and then several warm days in the second half with temperatures running near to a few degrees above normal.

The various ups and downs in the temperatures this past winter can be seen in the observed daily maximum and minimum temperatures for Tampa in the graphic below. The orange areas are the days with well above normal temperatures while the blue are days with well below normal temperatures.

Observed Daily Max Temp vs Departure for Dec 01, 2021-Feb 28, 2022



Observed Daily Min Temp vs Departure for Dec 01, 2021-Feb 28, 2022



Tampa International Airport

Below are temperature tables for the available sites at this time.

FEBRUARY TEMPERATURE RANKINGS (°F)

Location	February 2022		Normal Feb Temp	Dep fm Normal	Records Began
	Rank	Avg Temp			
Fort Myers Area	10th Warmest (tie)	71.1°	67.3°	+3.8°	Jan 1902
Tampa Area	10th Warmest (tie)	68.6°	64.7°	+3.9°	Apr 1890
Winter Haven Area	17th Warmest	67.5°	65.1°	+2.4°	Mar 1941
St Petersburg Area	28th Warmest (tie)	67.0°	64.9°	+2.1°	Aug 1914
Punta Gorda Area	35th Warmest (tie)	66.8°	65.5°	+1.3°	Jul 1914
Sarasota-Bradenton Area	26th Warmest (tie)	66.4°	64.8°	+1.6°	Jan 1911
Bartow	29th Warmest	65.6°	64.0°	+1.6°	Jun 1892
Tarpon Springs	38th Warmest	64.4°	62.9°	+1.5°	Jan 1892
Wauchula 2 N	34th Warmest (tie)	64.4°	62.9°	+1.5°	Jan 1933
Venice	31st Coolest	64.0°	64.6°	-0.6°	May 1955
Inverness 3 SE	19th Warmest	62.9°	58.9°	+4.0°	Jan 1948
Chiefland 5 ESE	25th Warmest	59.2°	58.5°	+0.7°	Jul 1956

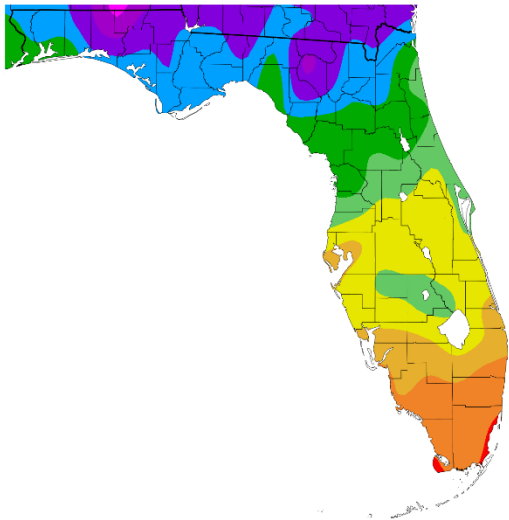
As for the Winter 2021-22 (Dec/Jan/Feb) average temperatures ended up generally slightly below normal to slightly above normal.

WINTER (DEC/JAN/FEB) TEMPERATURE (°F) :

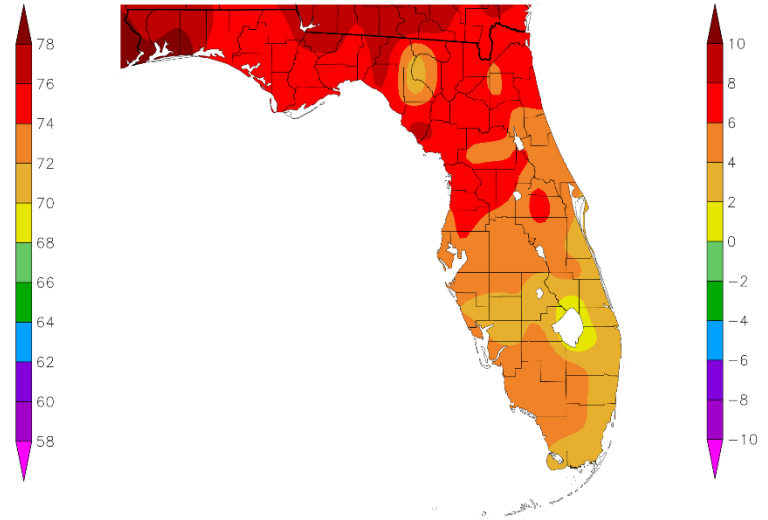
Location	Winter 2021-22		Normal Temp	Dep fm Normal	Records Began
	Rank	Avg Temp			
Fort Myers - Page Field	5th Warmest	69.7°	66.4°	+3.3°	Jan 1902
Tampa Area	4th Warmest	67.6°	63.9°	+3.7°	Apr 1890
St Petersburg Area	10th Warmest (tie)	67.1°	64.1°	+3.0°	Aug 1914
Punta Gorda Area	23rd Warmest (tie)	66.4°	64.8°	+1.6°	Jul 1914
Winter Haven Area	9th Warmest	66.3°	64.0°	+2.3°	Mar 1941
Sarasota-Bradenton Area	12st Warmest	65.9°	64.1°	+1.8°	Jan 1911
Venice	14th Warmest	65.1°	63.8°	+1.3°	May 1955
Bartow	20th Warmest	64.5°	63.0°	+1.5°	Jun 1892
Wauchula 2 N	32nd Warmest	63.5°	62.0°	+1.5°	Jan 1933
Tarpon Springs	31st Warmest (tie)	63.4°	61.8°	+1.6°	Jan 1892
Inverness 3 SE	13th Warmest	61.4°	58.0°	+3.4°	Jan 1948
Chiefland 5 ESE	14th Warmest	59.0°	57.1°	+1.9°	Jul 1956

On the following pages are graphics that depict the monthly/season average and departure from normal (average) temperature (based on the 1991-2020 Normals) across the area.

Temperature (F)
12/1/2021 - 12/31/2021

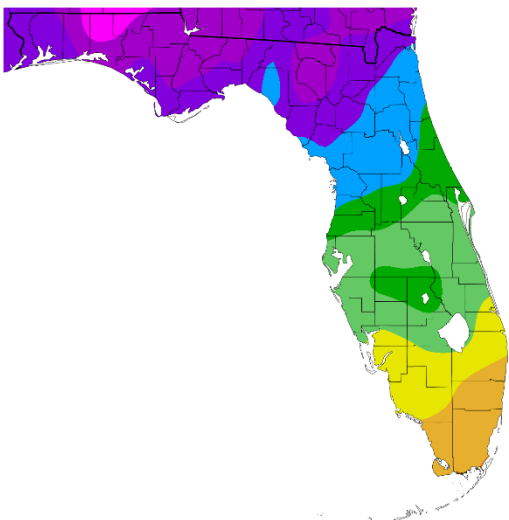


Departure from Normal Temperature (F)
12/1/2021 - 12/31/2021

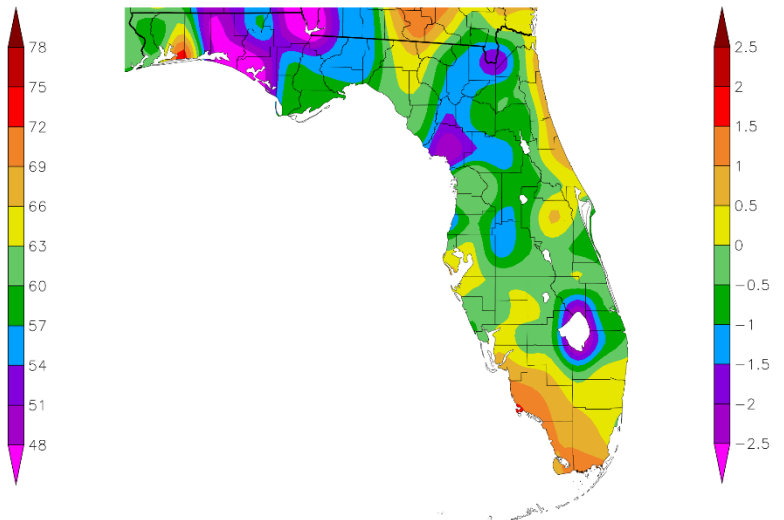


December 2021

Temperature (F)
1/1/2022 - 1/31/2022

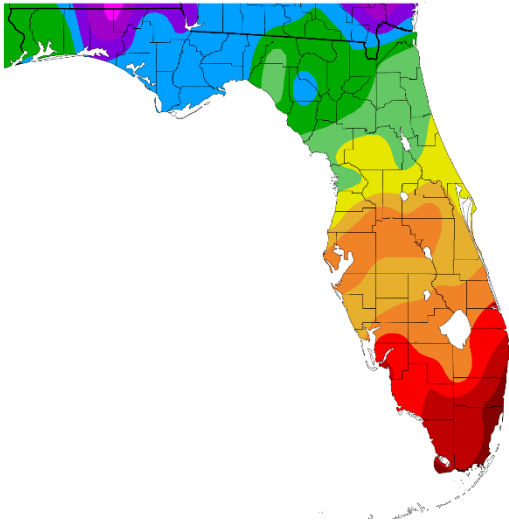


Departure from Normal Temperature (F)
1/1/2022 - 1/31/2022

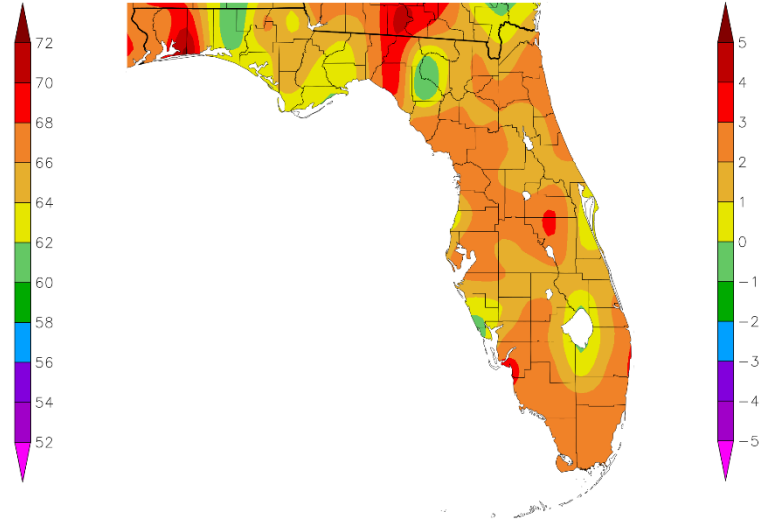


January 2022

Temperature (F)
2/1/2022 - 2/28/2022

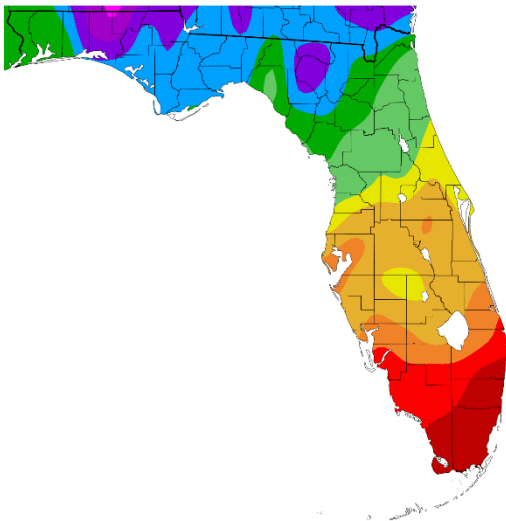


Departure from Normal Temperature (F)
2/1/2022 - 2/28/2022

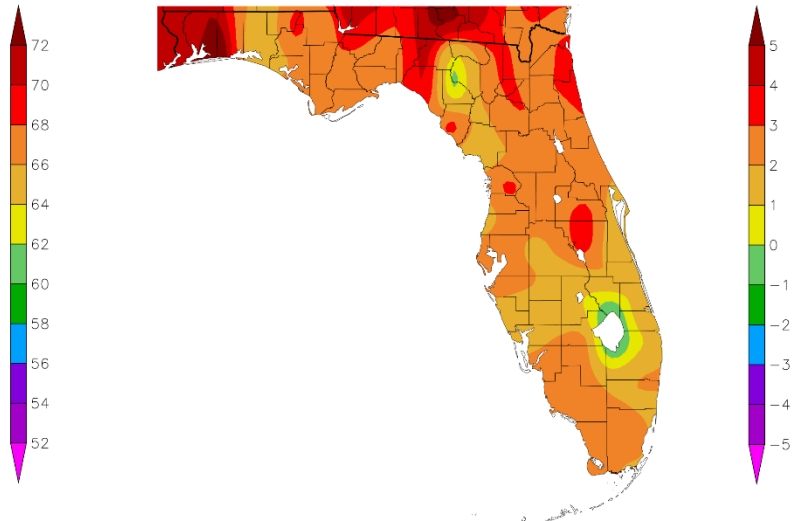


February 2022

Temperature (F)
12/1/2021 - 2/28/2022



Departure from Normal Temperature (F)
12/1/2021 - 2/28/2022



Winter 2021-2022

Graphics Source: NOAA Regional Climate Centers

As for rainfall it was a rather dry February with well below normal amounts across the entire region, and for the Winter 2021-2022 most locations were also well below normal with several in the Top Ten Driest. Below are rainfall tables for the available sites at this time.

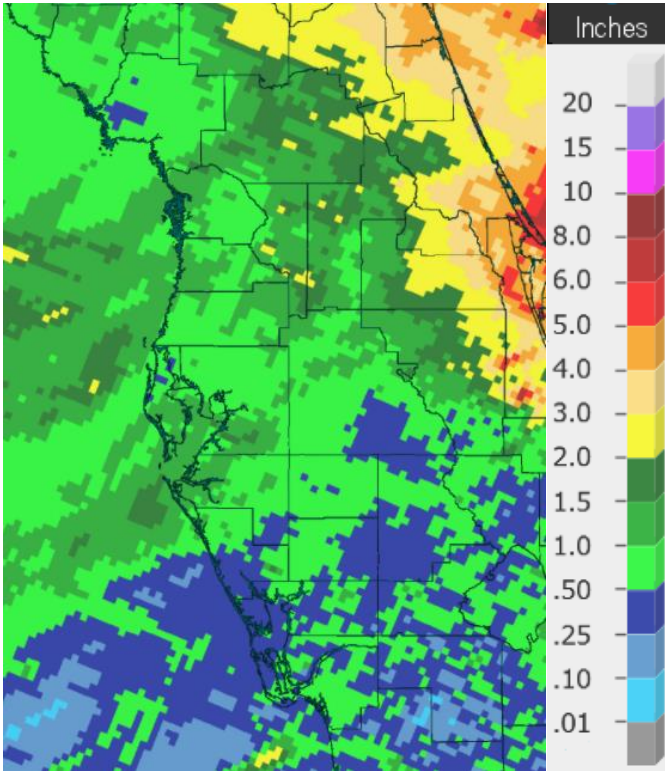
FEBRUARY RAINFALL (inches):

Location	Feb 2022 Rain Total	Normal Feb Rain	Dep fm Normal	Ranking	Records Began
Inverness 3 SE	0.99	2.69	-1.70	8th Driest (tie)	Jan 1948
Chiefland 5 ESE	0.98	3.25	-2.27	6th Driest (tie)	Jul 1956
Bartow	0.86	2.10	-1.24	20th Driest	Jun 1892
Punta Gorda Area	0.78	2.47	-1.69	26th Driest	May 1914
Tarpon Springs	0.76	2.51	-1.75	12th Driest	Jan 1892
St. Petersburg Area	0.74	2.02	-1.28	21st Driest	Aug 1914
Sarasota-Bradenton Area	0.71	1.92	-1.21	17th Driest	Jan 1911
Venice	0.68	2.00	-1.32	10th Driest	May 1955
Winter Haven Area	0.64	2.44	-1.80	10th Driest (tie)	Mar 1941
Tampa Area	0.62	2.62	-2.00	15th Driest	Apr 1890
Wauchula 2 N	0.56	2.18	-1.62	10th Driest	Jan 1933
Fort Myers Area	0.48	1.78	-1.30	19th Driest	Jan 1902

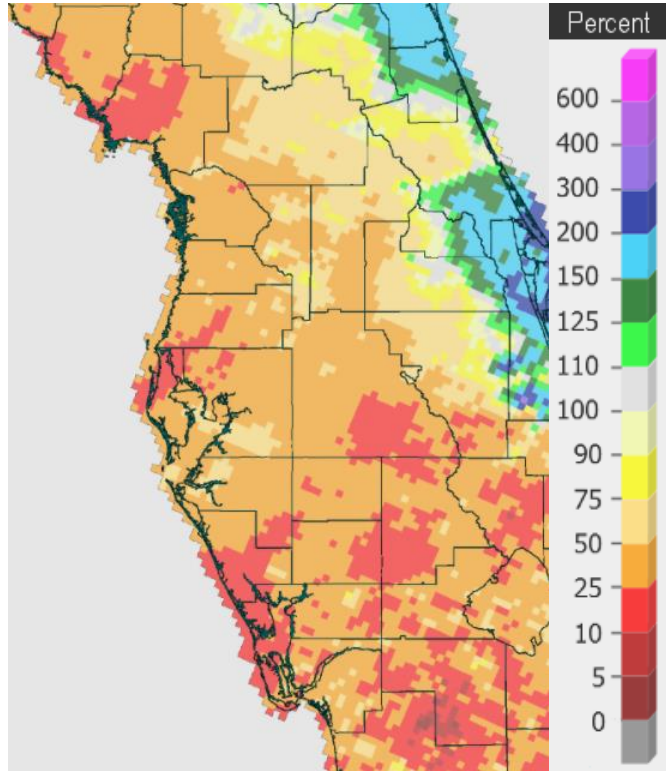
WINTER (DEC/JAN/FEB) RAINFALL (inches):

Location	Winter 2022 Rain Total	Normal Rain	Dep fm Normal	Ranking	Records Began
Chiefland 5 ESE	3.82	10.11	-6.29	2nd Driest	Jul 1956
Punta Gorda Area	3.80	6.78	-2.98	30th Driest	May 1914
Bartow	3.59	6.92	-3.33	23rd Driest	Jun 1892
Inverness 3 SE	3.56	8.14	-4.58	7th Driest	Jan 1948
Tarpon Springs	3.41	8.28	-4.87	9th Driest	Jan 1892
Winter Haven Area	3.25	7.61	-4.36	8th Driest	Mar 1941
Fort Myers Area	3.07	6.11	-3.04	35th Driest	Jan 1902
Tampa Area	2.67	7.83	-5.16	8th Driest	Apr 1890
Wauchula 2 N	2.64	6.60	-3.96	11th Driest	Jan 1933
St. Petersburg Area	2.23	6.93	-4.70	9th Driest	Aug 1914
Sarasota-Bradenton Area	2.07	7.04	-4.97	8th Driest	Jan 1911
Venice	1.99	6.99	-5.00	2nd Driest (tie)	May 1955

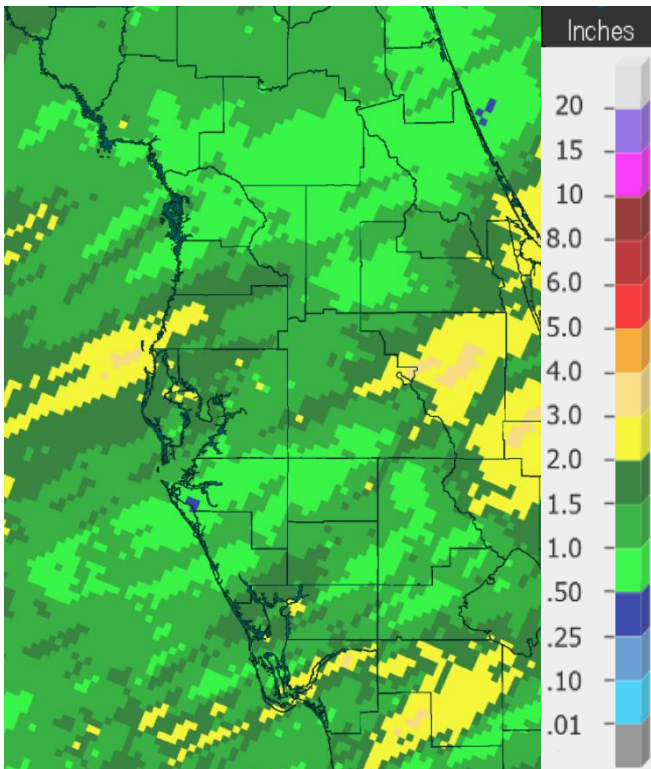
On the following pages are graphics that depict the monthly/season total and departure from normal (average) rainfall (based on the 1991-2020 Normals) across the area.



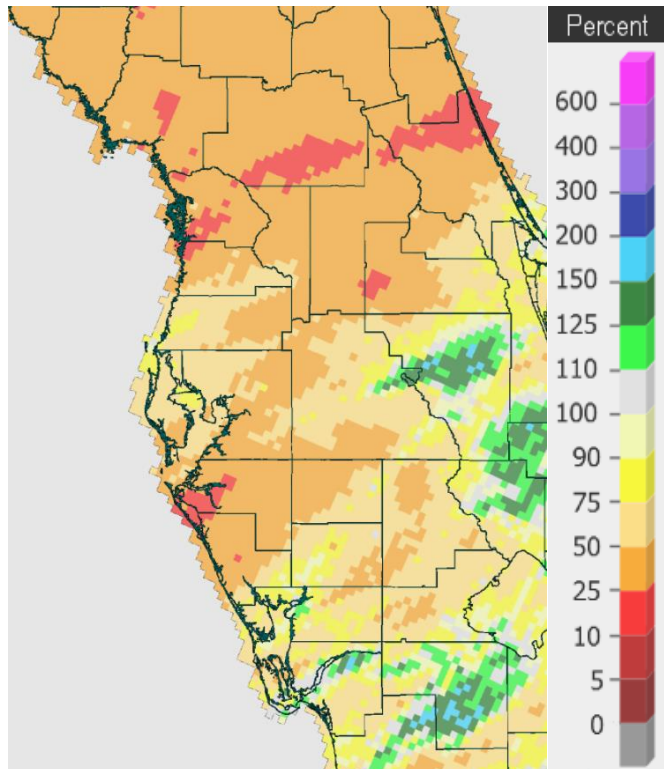
Rainfall December 2021



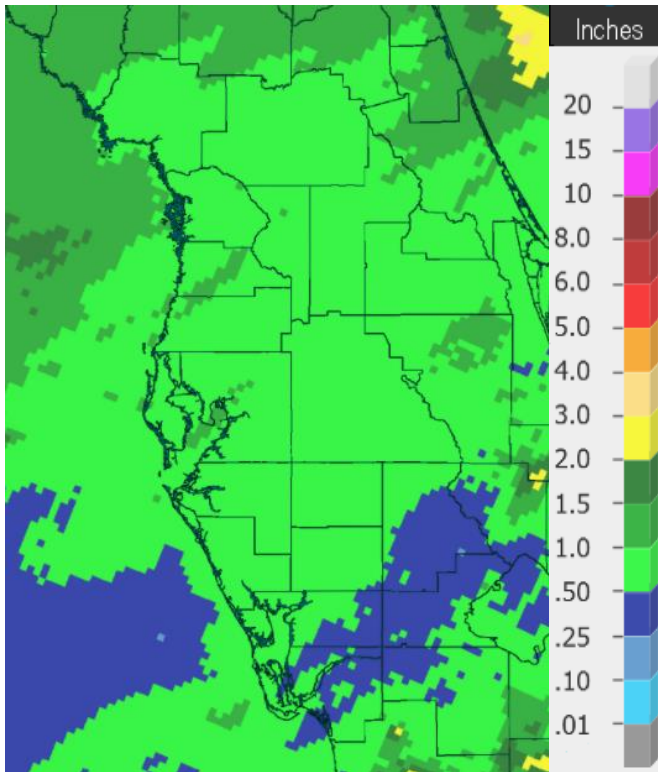
Percent of Normal



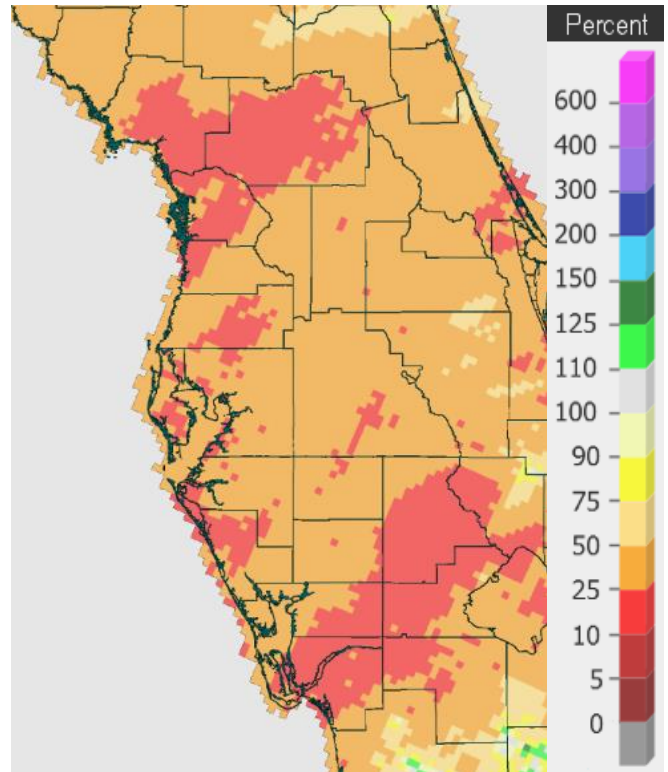
Rainfall January 2022



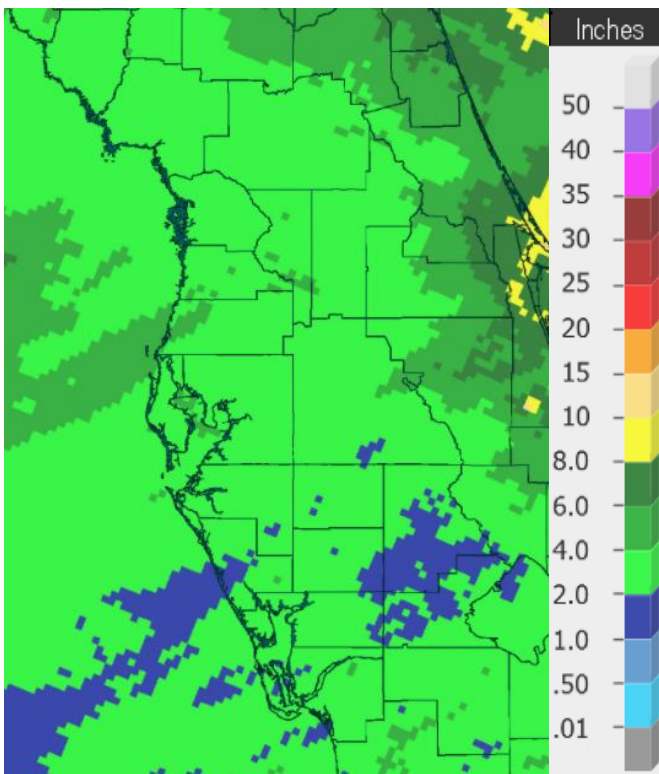
Percent of Normal



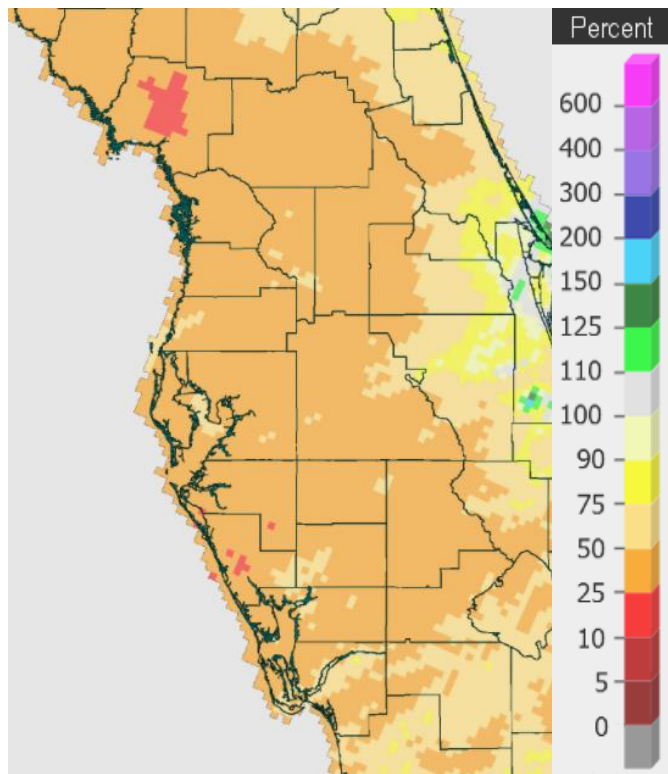
Rainfall February 2022



Percent of Normal



Rainfall Winter 2021-2022



Percent of Normal

On the following pages are tables of the Top Ten Warmest, Coolest, Wettest, and Driest Februarys and Winters (December/January/February) at some official NWS locations, which include the average/total for this month/season where available, and the 1991-2020 Normal (average) temperature and rainfall.

CHIEFLAND 5 ESE (records began in July 1956):

Warmest Februarys	Coolest Februarys	Wettest Februarys	Driest Februarys
1 68.8 in 2018	1 48.4 in 1958	1 15.20 in 1998	1 0.12 in 1962
2 65.3 in 2019	2 49.3 in 2010	2 9.06 in 2004	2 0.72 in 1994
3 64.2 in 1990	49.3 in 1968	3 8.73 in 1970	3 0.77 in 1980
4 64.1 in 1959	4 50.0 in 1978	4 7.75 in 1964	4 0.78 in 1989
5 64.0 in 2017	5 52.3 in 1963	5 7.42 in 1966	5 0.82 in 1997
64.0 in 1982	6 52.4 in 1964	6 7.05 in 1965	6 0.98 in 2022
7 63.3 in 1975	7 53.0 in 1969	7 6.55 in 1993	0.98 in 1996
63.3 in 1957	8 53.1 in 1980	8 6.26 in 1967	8 1.01 in 1991
9 63.1 in 2001	9 53.3 in 1977	9 6.10 in 1963	9 1.06 in 2000
10 62.6 in 1997	10 53.5 in 2009	10 6.01 in 1978	10 1.21 in 2017
...	...		
25 59.2 in 2022	35 59.2 in 2022		

Normal Temperature for February at CHIF1 = 58.5°
 Normal Rainfall for February at CHIF1 = 3.25 in.

Warmest Winters	Coolest Winters	Wettest Winters	Driest Winters
1 62.0 in 1956-57	1 50.8 in 1957-58	1 30.55 in 1997-98	1 2.18 in 1956-57
2 61.7 in 1971-72	2 51.7 in 1977-78	2 26.40 in 1963-64	2 3.82 in 2021-22
3 61.5 in 1998-99	51.7 in 1963-64	3 20.46 in 1969-70	3 3.86 in 2000-01
4 61.1 in 1990-91	4 52.0 in 1976-77	4 19.65 in 1964-65	4 4.21 in 1961-62
5 60.9 in 2019-20	5 52.1 in 2009-10	5 17.59 in 1977-78	5 5.19 in 2016-17
6 60.8 in 1973-74	6 52.7 in 2010-11	6 17.58 in 1978-79	5.19 in 1980-81
7 60.2 in 2017-18	52.7 in 1980-81	7 16.42 in 1965-66	7 5.26 in 2011-12
60.2 in 1974-75	8 52.9 in 1969-70	8 16.37 in 2018-19	8 5.42 in 2004-05
9 59.6 in 1988-89	9 53.2 in 1968-69	9 16.27 in 2005-06	9 5.49 in 1984-85
59.6 in 1964-65	10 53.7 in 2002-03	10 15.89 in 2013-14	10 6.00 in 1994-95
11 59.5 in 1992-93	53.7 in 1962-63		
12 59.3 in 2011-12			
13 59.2 in 1996-97			
14 59.0 in 2021-22			

Normal Temperature for Winter (Dec/Jan/Feb) at CHIF1 = 57.1°
 Normal Rainfall for Winter (Dec/Jan/Feb) at CHIF1 = 10.11 in.

INVERNESS 3 SE (records began in July 1948):

Warmest Februarys	Coolest Februarys	Wettest Februarys	Driest Februarys
1 69.4 in 1949	1 49.7 in 2010	1 10.21 in 1952	1 0.46 in 1999
2 68.9 in 2018	2 50.6 in 1978	2 6.62 in 1998	2 0.52 in 1985
3 68.1 in 1959	3 51.1 in 1958	3 6.45 in 1960	3 0.58 in 1976
4 66.9 in 1957	4 54.0 in 1977	4 6.25 in 1983	4 0.73 in 1950
5 66.1 in 2019	5 54.3 in 1980	5 6.16 in 1978	5 0.75 in 1989
6 65.9 in 1956	6 54.7 in 1968	6 5.64 in 2006	6 0.82 in 2009
7 65.8 in 1982	7 54.8 in 1988	7 5.56 in 1971	7 0.95 in 1949
8 65.7 in 1975	8 54.9 in 2015	8 5.43 in 1964	8 0.99 in 2022
9 64.9 in 1990	9 55.1 in 2009	9 5.35 in 2003	0.99 in 2005
10 64.2 in 2017	10 55.3 in 2006	10 5.34 in 1970	0.99 in 1995
64.2 in 2012	55.3 in 1979		0.99 in 1956
64.2 in 2001	55.3 in 1973		
64.2 in 1950			
...	...		
19 62.9 in 2022	48 62.9 in 2022		

Normal Temperature for February at INVF1 = 58.9°
 Normal Rainfall for February at INVF1 = 2.69 in.

Warmest Winters	Coolest Winters	Wettest Winters	Driest Winters
1 67.0 in 1948-49	1 52.5 in 2002-03	1 22.52 in 1997-98	1 1.98 in 1949-50
2 66.0 in 1949-50	2 53.1 in 1977-78	2 17.06 in 1977-78	2 2.49 in 2004-05
3 65.3 in 1956-57	53.1 in 1976-77	3 16.66 in 2018-19	3 2.59 in 1984-85
4 64.1 in 2016-17	4 53.2 in 2009-10	4 14.69 in 1969-70	4 2.98 in 2012-13
5 63.0 in 1971-72	5 53.5 in 1957-58	5 14.46 in 1963-64	5 3.20 in 1956-57
6 62.5 in 1951-52	6 54.1 in 2010-11	6 14.06 in 2002-03	6 3.52 in 1948-49
7 62.3 in 1974-75	7 55.6 in 1987-88	7 13.93 in 1951-52	7 3.56 in 2021-22
62.3 in 1964-65	8 55.9 in 1995-96	8 12.79 in 1978-79	8 3.81 in 1975-76
9 62.2 in 1973-74	9 56.1 in 1963-64	9 12.70 in 1993-94	9 3.90 in 2011-12
62.2 in 1953-54	10 56.3 in 2005-06	10 12.25 in 1983-84	10 4.02 in 1955-56
11 61.5 in 2007-08			
61.5 in 1970-71			
13 61.4 in 2021-22			

Normal Temperature for Winter (Dec/Jan/Feb) at INVF1 = 58.0°
 Normal Rainfall for Winter (Dec/Jan/Feb) at INVF1 = 8.14 in.

BROOKSVILLE AREA (records began in January 1892):

Warmest Februarys	Coolest Februarys	Wettest Februarys	Driest Februarys
1 70.6 in 2018	1 50.4 in 2010	1 10.15 in 1998	1 0.10 in 1911
2 69.9 in 1927	2 52.1 in 1895	2 9.59 in 1952	2 0.11 in 2017
3 69.1 in 1932	3 52.8 in 1902	3 8.84 in 1899	3 0.14 in 2000
4 69.0 in 1949	4 52.9 in 1978	4 8.72 in 2004	4 0.50 in 1945
5 68.8 in 1944	5 54.8 in 1947	5 7.37 in 1936	5 0.54 in 1938
6 68.6 in 2019	54.8 in 1920	6 7.19 in 1983	6 0.53 in 2009
68.6 in 1939	7 55.2 in 1901	7 7.04 in 1903	0.53 in 1939
8 68.4 in 1918	8 55.9 in 2009	8 6.83 in 1971	8 0.54 in 1999
9 68.1 in 1959	9 56.0 in 1963	9 6.78 in 1981	9 0.57 in 2001
10 66.9 in 1975	56.0 in 1942	10 6.52 in 1946	0.57 in 1943
66.9 in 1945			

Average Temperature for February 1-25, 2022 = Not Available, Several Missing Days
 Normal Temperature for February at BKV = 60.6°

Total Rainfall for February 1-25, 2022 = Not Available, Several Missing Days
 Normal Rainfall for February at BKV = 2.57 in.

Warmest Winters	Coolest Winters	Wettest Winters	Driest Winters
1 68.2 in 1931-32	1 53.8 in 1901-02	1 22.83 in 1997-98	1 1.09 in 1910-11
2 67.5 in 1948-49	2 54.0 in 2009-10	2 17.83 in 1898-99	2 1.57 in 1906-07
3 66.9 in 1949-50	3 54.5 in 2010-11	3 17.22 in 1935-36	3 1.89 in 2011-12
4 66.1 in 1926-27	4 55.0 in 2002-03	4 16.98 in 1911-12	4 2.44 in 1949-50
5 65.8 in 1912-13	5 55.7 in 1976-77	5 16.44 in 1969-70	5 2.63 in 1938-39
6 65.4 in 1936-37	6 56.2 in 1969-70	6 16.21 in 1902-03	6 2.81 in 1999-00
65.4 in 1932-33	7 56.4 in 2003-04	7 15.51 in 1963-64	7 2.87 in 2008-09
8 65.2 in 1971-72	8 56.7 in 1963-64	8 14.93 in 1913-14	8 3.02 in 1908-09
9 64.3 in 1973-74	9 56.8 in 1939-40	9 14.80 in 2003-04	9 3.26 in 1942-43
10 64.1 in 1974-75	56.8 in 1894-95	10 14.79 in 1977-78	10 3.43 in 1984-85

Average Temperature for Winter 2021-22 (Dec/Jan/Feb) = Not Available, Several
 Missing Days in January and February
 Normal Temperature for Winter (Dec/Jan/Feb) at BKV = 59.5°

Total Rainfall for Winter 2021-22 (Dec/Jan/Feb) = Not Available, Several Missing
 Days in January and February
 Normal Rainfall for Winter (Dec/Jan/Feb) at BKV = 8.14 in.

ST LEO (records began in April 1895):

Warmest Februarys	Coolest Februarys	Wettest Februarys	Driest Februarys
1 71.2 in 2018	1 52.7 in 1958	1 11.04 in 1998	1 0.01 in 1911
2 70.2 in 1932	2 53.3 in 2010	2 9.71 in 1899	2 0.14 in 1999
3 69.5 in 1949	3 53.9 in 1978	3 9.48 in 1983	3 0.25 in 1950
4 69.4 in 2019	4 54.4 in 1947	4 8.69 in 1937	4 0.32 in 1945
5 69.1 in 1982	5 54.9 in 1968	5 8.09 in 1936	5 0.40 in 1989
6 69.0 in 1990	6 55.9 in 1912	6 7.22 in 1915	6 0.42 in 1948
7 68.9 in 1959	7 56.0 in 1942	7 6.92 in 1897	7 0.44 in 1916
8 68.7 in 1939	8 56.5 in 1902	8 6.35 in 1971	8 0.48 in 1938
9 68.2 in 1944	9 56.7 in 1964	6.35 in 1952	9 0.51 in 1922
10 68.1 in 1962	10 57.1 in 1970	10 6.31 in 1963	10 0.54 in 2000
...	57.1 in 1941		11 0.65 in 2022
33 65.0 in 2022	57.1 in 1920		0.65 in 1962
	...		
	92 65.0 in 2022		

Normal Temperature for February at STLF1 = 62.6°
 Normal Rainfall for February at STLF1 = 2.38 in.

Warmest Winters	Coolest Winters	Wettest Winters	Driest Winters
1 68.7 in 1931-32	1 54.7 in 1930-31	1 28.97 in 1997-98	1 1.56 in 1906-07
2 68.0 in 1948-49	2 55.5 in 1957-58	2 23.03 in 1898-99	2 1.72 in 1910-11
3 66.6 in 1949-50	3 56.3 in 1977-78	3 18.02 in 1981-82	3 2.07 in 1949-50
4 66.4 in 1936-37	4 56.4 in 1939-40	4 17.89 in 2002-03	4 2.23 in 1938-39
5 66.1 in 1956-57	5 56.5 in 2009-10	5 16.87 in 1969-70	5 2.62 in 2011-12
6 65.8 in 1971-72	56.5 in 1976-77	6 16.34 in 1935-36	6 2.71 in 1975-76
7 65.7 in 1912-13	7 56.9 in 1969-70	7 15.61 in 1913-14	7 2.81 in 1937-38
8 65.5 in 1998-99	8 57.1 in 2010-11	8 14.90 in 1940-41	8 3.48 in 1915-16
9 65.2 in 2007-08	9 57.3 in 1927-28	9 14.55 in 1902-03	9 3.54 in 2016-17
10 65.1 in 2016-17	10 57.5 in 1935-36	10 14.40 in 1977-78	10 3.65 in 1931-32
65.1 in 1990-91			

Average Temperature for Winter 2021-22 (Dec/Jan/Feb) = Not Available Yet
 Normal Temperature for Winter (Dec/Jan/Feb) at STLF1 = 61.5°

Total Rainfall for Winter 2021-22 (Dec/Jan/Feb) = Not Available Yet
 Normal Rainfall for Winter (Dec/Jan/Feb) at STLF1 = 7.97 in.

TARPON SPRINGS (records began in January 1892):

Warmest Februarys	Coolest Februarys	Wettest Februarys	Driest Februarys
1 71.2 in 2018	1 51.8 in 1958	1 10.91 in 1998	1 0.06 in 1911
2 70.7 in 1932	2 52.0 in 1895	2 9.79 in 1899	2 0.17 in 2009
3 69.6 in 2019	3 53.0 in 1978	3 8.90 in 1936	3 0.26 in 1918
69.6 in 1949	4 54.6 in 2010	4 8.56 in 1937	4 0.32 in 1999
5 69.3 in 1990	5 55.0 in 1968	5 8.45 in 1983	5 0.38 in 1997
6 68.9 in 1944	6 55.2 in 1902	6 7.36 in 1971	6 0.40 in 1950
68.9 in 1939	7 55.4 in 1964	7 6.52 in 1903	7 0.41 in 1989
8 68.7 in 1927	55.4 in 1947	8 6.49 in 1963	8 0.44 in 1945
9 68.6 in 1997	9 55.5 in 1980	9 6.31 in 2004	9 0.52 in 1938
10 68.1 in 1982	10 55.7 in 1963	10 6.24 in 1970	10 0.59 in 1944
...	...		11 0.68 in 2005
38 64.4 in 2022	89 64.4 in 2022		12 0.76 in 2022

Normal Temperature for February at TRPF1 = 62.9°

Normal Rainfall for February at TRPF1 = 2.51 in.

Warmest Winters	Coolest Winters	Wettest Winters	Driest Winters
1 70.5 in 1931-32	1 54.2 in 1957-58	1 29.65 in 1997-98	1 0.97 in 1949-50
2 67.3 in 1949-50	2 55.1 in 1963-64	2 20.41 in 1935-36	2 2.06 in 1910-11
3 66.0 in 1932-33	3 55.8 in 1977-78	3 19.40 in 1898-99	3 2.08 in 1938-39
4 65.9 in 2016-17	4 56.3 in 1980-81	4 18.08 in 1969-70	4 2.14 in 1906-07
5 65.6 in 1990-91	5 56.5 in 1962-63	5 17.47 in 1983-84	5 2.37 in 2000-01
6 65.5 in 1936-37	56.5 in 1939-40	6 17.41 in 2002-03	6 2.67 in 2008-09
7 65.3 in 2019-20	7 56.6 in 2010-11	7 16.44 in 2018-19	7 3.02 in 1975-76
65.3 in 1996-97	56.6 in 1901-02	8 15.17 in 1902-03	8 3.11 in 1934-35
65.3 in 1926-27	9 56.8 in 2009-10	9 14.89 in 1963-64	9 3.41 in 2021-22
65.3 in 1912-13	56.8 in 1976-77	10 14.33 in 1985-86	10 3.54 in 1968-69
	56.8 in 1969-70		
...	...		
31 63.4 in 2021-22	83 63.4 in 2021-22		
63.4 in 2001-02	63.4 in 2001-02		
63.4 in 1938-39	63.4 in 1938-39		
63.4 in 1928-29	63.4 in 1928-29		

Normal Temperature for Winter (Dec/Jan/Feb) at TRPF1 = 61.8°

Normal Rainfall for Winter (Dec/Jan/Feb) at TRPF1 = 8.28 in.

TAMPA AREA (records began in April 1890):

Warmest Februarys	Coolest Februarys	Wettest Februarys	Driest Februarys
1 74.2 in 2018	1 52.9 in 1958	1 10.92 in 1937	1 0.05 in 1911
2 70.9 in 2019	2 53.2 in 1978	2 10.82 in 1998	2 0.08 in 1918
3 70.8 in 1932	3 54.3 in 1968	3 9.09 in 2006	3 0.21 in 1950
4 70.1 in 1949	4 54.8 in 1947	4 7.95 in 1963	4 0.25 in 1932
5 69.1 in 1990	54.8 in 1895	5 7.43 in 1936	5 0.29 in 1999
69.1 in 1891	6 55.0 in 2010	6 7.35 in 1983	6 0.30 in 2000
7 68.9 in 1959	7 55.8 in 1969	7 6.55 in 2015	7 0.34 in 1949
68.9 in 1927	8 56.2 in 1912	8 6.27 in 1899	8 0.41 in 1991
9 68.8 in 2017	56.2 in 1902	9 6.06 in 1903	0.41 in 1989
10 68.6 in 2022	10 56.6 in 1980	10 5.98 in 1919	10 0.43 in 1994
68.6 in 1997			11 0.49 in 1976
			12 0.52 in 1922
			13 0.56 in 1944
			14 0.61 in 1923
			15 0.62 in 2022

Normal Temperature for February at TPA = 64.7°

Normal Rainfall for February at TPA = 2.62 in.

Warmest Winters	Coolest Winters	Wettest Winters	Driest Winters
1 70.3 in 1931-32	1 55.2 in 1957-58	1 31.03 in 1997-98	1 0.51 in 1949-50
2 68.4 in 2016-17	2 55.7 in 1977-78	2 17.11 in 2002-03	2 1.41 in 1906-07
68.4 in 1948-49	3 56.0 in 1976-77	3 15.81 in 2018-19	3 1.71 in 1931-32
4 67.6 in 2021-22	4 56.2 in 1980-81	4 15.59 in 1898-99	4 1.76 in 1975-76
5 67.0 in 1949-50	5 56.5 in 1969-70	5 14.86 in 1936-37	5 1.86 in 1910-11
6 66.8 in 2017-18	6 56.8 in 1963-64	6 14.53 in 1914-15	6 2.15 in 1948-49
7 66.7 in 1936-37	7 57.2 in 1939-40	7 13.78 in 1902-03	7 2.54 in 1938-39
8 66.5 in 2019-20	8 57.3 in 1968-69	8 13.77 in 1941-42	8 2.67 in 2021-22
9 66.1 in 2011-12	9 57.4 in 1901-02	9 13.74 in 1935-36	9 2.76 in 1943-44
10 66.1 in 1912-13	10 57.7 in 2009-10	10 12.76 in 1963-64	10 2.85 in 1934-35

Normal Temperature for Winter (Dec/Jan/Feb) at TPA = 63.9°

Normal Rainfall for Winter (Dec/Jan/Feb) at TPA = 7.83 in.

ST PETERSBURG – ALBERT WHITTED (records began in August 1914):

Warmest Februarys	Coolest Februarys	Wettest Februarys	Driest Februarys
1 72.6 in 2018	1 55.7 in 1978	1 12.71 in 1998	1 0.12 in 1918
2 72.3 in 1932	2 55.9 in 2010	2 10.93 in 1937	2 0.18 in 2001
3 71.1 in 1949	3 57.3 in 1964	3 9.06 in 1983	3 0.24 in 1976
4 70.1 in 2019	57.3 in 1947	4 8.26 in 1963	4 0.25 in 1999
5 70.0 in 1959	5 58.3 in 1940	5 7.96 in 1936	5 0.29 in 2012
6 69.9 in 1927	6 58.8 in 1963	6 6.69 in 1946	6 0.34 in 1949
7 69.6 in 1957	7 58.9 in 1980	7 6.37 in 1972	7 0.43 in 1989
8 69.4 in 1944	8 59.0 in 1968	8 5.97 in 1964	8 0.44 in 1944
9 69.3 in 1982	9 59.3 in 1941	9 5.67 in 1958	9 0.45 in 1950
69.3 in 1939	10 59.5 in 1977	10 5.57 in 1919	10 0.49 in 1922
...	59.5 in 1942
28 67.0 in 2022	76 67.0 in 2022	90 0.74 in 2022	21 0.74 in 2022
67.0 in 2011	67.0 in 2011		
67.0 in 1945	67.0 in 1945		

Normal Temperature for February at SPG = 64.9°

Normal Rainfall for February at SPG = 2.02 in.

Warmest Winters	Coolest Winters	Wettest Winters	Driest Winters
1 72.1 in 1931-32	1 58.1 in 1939-40	1 32.36 in 1997-98	1 0.59 in 1949-50
2 69.4 in 1948-49	2 58.2 in 1963-64	2 20.23 in 2002-03	2 1.49 in 2016-17
3 68.3 in 1971-72	3 58.5 in 2009-10	3 17.14 in 1963-64	3 1.51 in 2000-01
4 68.1 in 1936-37	58.5 in 1976-77	4 16.95 in 1914-15	4 1.54 in 1975-76
5 67.8 in 1949-50	5 58.7 in 1977-78	5 15.15 in 1935-36	5 1.92 in 2011-12
6 67.7 in 2016-17	6 59.2 in 1980-81	6 13.63 in 1947-48	6 2.06 in 1938-39
67.7 in 2012-13	7 59.3 in 1962-63	7 13.50 in 1969-70	7 2.11 in 1955-56
8 67.6 in 1956-57	8 59.8 in 1969-70	8 13.37 in 1936-37	8 2.21 in 1934-35
9 67.5 in 1932-33	9 60.1 in 1930-31	9 13.14 in 1957-58	9 2.23 in 2021-22
10 67.1 in 2021-22	10 60.5 in 2002-03	10 12.64 in 1945-46	10 2.35 in 1948-49
67.1 in 1926-27			

Normal Temperature for Winter (Dec/Jan/Feb) at SPG = 64.1°

Normal Rainfall for Winter (Dec/Jan/Feb) at SPG = 6.93 in.

PLANT CITY (records began in September 1892):

Warmest Februarys	Coolest Februarys	Wettest Februarys	Driest Februarys
1 73.2 in 2018	1 54.6 in 1958	1 9.04 in 1936	1 0.00 in 1911
2 71.9 in 2019	2 54.9 in 2010	2 8.87 in 1899	2 Trace in 1918
3 70.6 in 1949	3 55.9 in 1978	3 8.57 in 1983	3 0.05 in 1989
4 70.1 in 1959	4 56.0 in 1902	4 8.49 in 1998	4 0.09 in 1976
5 69.6 in 1918	5 56.2 in 1947	5 7.97 in 1937	5 0.25 in 1950
6 69.0 in 2017	6 56.7 in 1968	6 7.56 in 1963	6 0.28 in 1932
7 68.9 in 1982	56.7 in 1942	7 6.77 in 1919	7 0.31 in 2000
8 68.8 in 2021	56.7 in 1941	8 6.13 in 1972	8 0.36 in 1945
68.8 in 1939	9 56.9 in 1931	9 5.98 in 2015	9 0.37 in 1949
10 68.6 in 1990	10 57.1 in 1912	10 5.73 in 1992	0.37 in 1944

Average Temperature for February 1-26, 2022 = 66.9°

Normal Temperature for February at PLCF1 = 65.3°

Total Rainfall for February 1-26, 2022 = 0.68 in.

Normal Rainfall for February at PLCF1 = 2.33 in.

Warmest Winters	Coolest Winters	Wettest Winters	Driest Winters
1 68.7 in 1948-49	1 55.2 in 1930-31	1 26.68 in 1997-98	1 1.03 in 1906-07
2 67.3 in 2019-20	2 56.5 in 1935-36	2 17.28 in 1898-99	2 1.06 in 1975-76
3 67.2 in 1971-72	3 56.6 in 1939-40	3 17.16 in 1935-36	3 2.04 in 1910-11
4 66.8 in 1956-57	56.6 in 1901-02	4 16.72 in 2002-03	4 2.15 in 1938-39
5 66.2 in 1949-50	5 56.7 in 1957-58	5 14.99 in 2018-19	5 2.19 in 1908-09
6 66.1 in 2012-13	6 57.2 in 1980-81	6 14.70 in 1914-15	6 2.39 in 2011-12
7 66.0 in 2018-19	7 57.5 in 1976-77	7 14.27 in 1905-06	7 2.68 in 1917-18
8 65.8 in 2015-16	8 57.9 in 2009-10	8 14.09 in 1978-79	8 2.75 in 1942-43
9 65.6 in 2012-13	9 58.2 in 1963-64	9 13.94 in 1963-64	9 2.89 in 1904-05
10 65.5 in 2007-08	10 58.3 in 1969-70	10 13.57 in 1925-26	10 3.19 in 1948-49
65.5 in 1936-37	58.3 in 1895-96		

Average Temperature for Winter 2021-22 (Dec/Jan/Feb) thru Feb 26 = 65.8°

Normal Temperature for Winter (Dec/Jan/Feb) at PLCF1 = 64.2°

Total Rainfall for Winter 2021-22 (Dec/Jan/Feb) thru Feb 26 = 2.71 in.

Normal Rainfall for Winter (Dec/Jan/Feb) at PLCF1 = 7.87 in.

LAKELAND AREA (records began in January 1915):

Warmest Februarys	Coolest Februarys	Wettest Februarys	Driest Februarys
1 72.8 in 2018	1 52.8 in 1958	1 9.60 in 1983	1 Trace in 1918
2 71.6 in 1932	2 54.7 in 1947	2 8.40 in 1936	2 0.14 in 1989
3 71.1 in 2019	3 55.0 in 1978	3 8.25 in 1998	3 0.17 in 1945
4 70.4 in 1918	4 55.8 in 1968	4 7.21 in 1937	4 0.20 in 1916
5 70.1 in 1990	5 55.9 in 2010	5 6.59 in 1963	5 0.25 in 1932
70.1 in 1949	6 56.7 in 1941	6 5.89 in 1915	6 0.26 in 1949
7 69.8 in 1982	7 56.8 in 1942	7 5.65 in 2015	0.26 in 1935
8 69.6 in 1927	8 57.3 in 1964	8 5.55 in 1919	8 0.27 in 1976
9 69.3 in 1939	57.3 in 1963	9 5.36 in 1972	9 0.48 in 1999
10 68.8 in 2001	10 57.9 in 1973	10 5.11 in 1992	0.48 in 1944
	57.9 in 1970		

Average Temperature for February 1-23, 2022 = 66.2°

Normal Temperature for February at LLDF1 = 65.0°

Total Rainfall for February 1-23, 2022 = 0.71 in.

Normal Rainfall for February at LLDF1 = 2.33 in.

Warmest Winters	Coolest Winters	Wettest Winters	Driest Winters
1 70.9 in 1931-32	1 55.2 in 1957-58	1 23.72 in 1997-98	1 1.49 in 1934-35
2 68.1 in 1948-49	2 56.6 in 1976-77	2 19.49 in 2002-03	2 1.64 in 1975-76
3 68.0 in 2016-17	3 56.8 in 1977-78	3 16.60 in 1935-36	3 1.82 in 1938-39
4 66.9 in 1949-50	4 57.1 in 1969-70	4 15.22 in 2018-19	4 2.04 in 1927-28
5 66.7 in 1936-37	5 57.4 in 1963-64	5 12.94 in 1978-79	5 2.10 in 1943-44
66.7 in 1932-33	57.4 in 1939-40	6 12.66 in 1982-83	6 2.21 in 1931-32
7 66.6 in 2019-20	7 58.2 in 1982-83	7 11.97 in 1925-26	7 2.47 in 1948-49
8 66.4 in 1956-57	58.2 in 1980-81	8 11.96 in 1963-64	8 2.56 in 2011-12
9 66.3 in 1971-72	9 58.6 in 1962-63	9 11.81 in 1965-66	9 2.71 in 2000-01
10 66.2 in 2012-13	10 58.8 in 2009-10	10 11.58 in 1992-93	10 2.77 in 1917-18

Average Temperature for Winter 2021-22 (Dec/Jan/Feb) thru Feb 23 = 65.3°

Normal Temperature for Winter (Dec/Jan/Feb) at LLDF1 = 64.0°

Total Rainfall for Winter 2021-22 (Dec/Jan/Feb) thru Feb 23 = 2.44 in.

Normal Rainfall for Winter (Dec/Jan/Feb) at LLDF1 = 7.93 in.

BARTOW (records began in June 1892):

Warmest Februarys		Coolest Februarys		Wettest Februarys		Driest Februarys	
1	71.6 in 2018	1	54.1 in 1895	1	9.15 in 1998	1	0.00 in 1911
2	71.0 in 1949	2	54.8 in 1958	2	9.12 in 1936	2	0.03 in 1932
3	70.1 in 1959	3	54.9 in 1912	3	8.33 in 1983	3	0.07 in 2001
4	69.7 in 2014	4	56.2 in 1968	4	8.11 in 1963	4	0.14 in 1916
5	69.6 in 2019	5	56.3 in 2010	5	7.30 in 1899	5	0.21 in 2000
	69.6 in 1990	6	56.4 in 1947	6	6.41 in 1937	6	0.24 in 1989
	69.6 in 1982	7	57.8 in 1901	7	6.33 in 1913	7	0.26 in 1945
8	69.5 in 2001	8	57.9 in 1980	8	6.23 in 1960	8	0.33 in 1950
	69.5 in 1903	9	58.0 in 1977	9	6.16 in 1972	9	0.37 in 2009
10	68.9 in 1975	10	58.1 in 1964	10	5.76 in 1924	10	0.40 in 1999
...		
29	65.6 in 2022	62	65.6 in 2022	110	0.86 in 2022	20	0.86 in 2022
					0.86 in 1985		0.86 in 1985

Normal Temperature for February at BARF1 = 64.0°

Normal Rainfall for February at BARF1 = 2.10 in.

Warmest Winters		Coolest Winters		Wettest Winters		Driest Winters	
1	68.9 in 1948-49	1	56.7 in 1957-58	1	24.41 in 1997-98	1	1.57 in 1938-39
2	67.5 in 2013-14	2	57.8 in 1909-10	2	19.39 in 2002-03	2	1.65 in 1943-44
3	66.8 in 1949-50	3	58.0 in 1980-81	3	18.87 in 1935-36	3	1.72 in 1934-35
4	66.7 in 2016-17	4	58.5 in 1969-70	4	16.42 in 1983-84	4	1.77 in 2011-12
5	66.3 in 1998-99	5	58.7 in 1963-64	5	16.18 in 1914-15	5	1.83 in 1984-85
	66.3 in 1956-57	6	59.4 in 2010-11	6	16.06 in 1905-06	6	1.89 in 1910-11
7	66.2 in 1971-72	7	59.5 in 1962-63	7	15.37 in 1898-99	7	2.03 in 2000-01
8	65.8 in 1988-89	8	59.7 in 1903-04	8	15.02 in 1925-26	8	2.15 in 1915-16
	65.8 in 1974-75	9	59.8 in 1911-12	9	13.59 in 1957-58	9	2.16 in 1949-50
	65.8 in 1912-13	10	59.9 in 1968-69	10	13.23 in 1965-66	10	2.22 in 1904-05
			59.9 in 1954-55	
...		...		105	3.59 in 2022	23	3.59 in 2022
20	64.5 in 2022	52	64.5 in 2022				

Normal Temperature for Winter (Dec/Jan/Feb) at BARF1 = 63.0°

Normal Rainfall for Winter (Dec/Jan/Feb) at BARF1 = 6.92 in.

WINTER HAVEN AREA (records began in March 1941):

Warmest Februarys	Coolest Februarys	Wettest Februarys	Driest Februarys
1 72.8 in 2019	1 54.0 in 1958	1 10.61 in 1998	1 0.20 in 1945
2 72.7 in 2018	2 55.0 in 2010	2 7.82 in 1983	2 0.32 in 1989
3 71.5 in 1949	3 55.5 in 1978	3 6.57 in 1960	3 0.33 in 1944
4 70.1 in 1990	4 56.4 in 1968	4 6.03 in 1963	4 0.41 in 2011
5 70.0 in 1975	5 56.8 in 1969	5 5.86 in 2021	5 0.44 in 1950
6 69.4 in 1982	6 57.0 in 1947	5.86 in 2015	6 0.54 in 2009
69.4 in 1959	7 57.9 in 1964	7 5.49 in 1957	7 0.56 in 2000
8 69.0 in 1997	8 58.5 in 1980	8 5.08 in 2002	8 0.58 in 1949
9 68.9 in 1962	9 58.9 in 1977	9 5.05 in 1972	9 0.60 in 1954
10 68.4 in 2001	10 59.0 in 1963	10 4.73 in 1971	10 0.64 in 2022
11 68.2 in 2017			0.64 in 1976
68.2 in 195			
68.2 in 1944			
14 68.2 in 2021			
15 68.2 in 2012			
16 68.2 in 1956			
17 67.5 in 2022			

Normal Temperature for February at GIF = 65.1°

Normal Rainfall for February at GIF = 2.44 in.

Warmest Winters	Coolest Winters	Wettest Winters	Driest Winters
1 69.4 in 1948-49	1 56.6 in 1957-58	1 24.22 in 1997-98	1 1.75 in 1984-85
2 67.8 in 1949-50	2 56.9 in 1976-77	2 16.55 in 2002-03	2 1.83 in 1943-44
3 67.5 in 1971-72	3 57.7 in 1963-64	3 12.78 in 1965-66	3 2.00 in 2011-12
4 67.4 in 2016-17	4 58.0 in 2009-10	4 12.35 in 1963-64	4 2.28 in 1975-76
67.4 in 1990-91	5 58.1 in 1977-78	5 12.17 in 1957-58	5 2.79 in 1948-49
67.4 in 1988-89	6 58.6 in 1968-69	6 12.10 in 1947-48	6 3.00 in 2012-13
7 66.7 in 2019-20	7 58.7 in 2010-11	7 11.84 in 2018-19	7 3.09 in 2000-01
8 66.4 in 1956-57	8 59.1 in 1969-70	8 11.75 in 1983-84	8 3.25 in 2021-22
9 66.3 in 2021-22	9 59.6 in 1962-63	9 11.72 in 1978-79	9 3.53 in 2017-18
10 66.2 in 2018-19	10 60.6 in 1975-76	10 10.68 in 1977-78	10 3.54 in 1949-50

Normal Temperature for Winter (Dec/Jan/Feb) at GIF = 64.0°

Normal Rainfall for Winter (Dec/Jan/Feb) at GIF = 7.61 in.

SARASOTA-BRADENTON AREA (records began in January 1911):

Warmest Februarys	Coolest Februarys	Wettest Februarys	Driest Februarys
1 71.9 in 2018	1 54.4 in 1958	1 10.16 in 1983	1 Trace in 1911
2 71.1 in 2019	2 54.8 in 1978	2 9.29 in 1963	2 0.05 in 2001
3 70.5 in 1959	3 55.7 in 2010	3 7.34 in 1915	3 0.11 in 1950
4 69.7 in 1949	4 56.3 in 1977	4 7.13 in 1992	4 0.13 in 1989
5 69.4 in 1990	5 57.3 in 1980	5 6.65 in 1936	5 0.15 in 1932
6 69.1 in 1932	57.3 in 1912	6 6.04 in 1937	6 0.20 in 1918
7 68.4 in 1982	7 57.7 in 1968	7 5.92 in 1942	7 0.21 in 1949
8 68.3 in 1939	8 58.2 in 1942	8 5.91 in 1998	8 0.25 in 1945
9 68.2 in 2012	9 58.4 in 1969	9 5.80 in 1964	9 0.27 in 1944
68.2 in 2001	10 58.5 in 1941	10 5.73 in 1947	10 0.35 in 1976
...	...		11 0.40 in 1922
26 66.4 in 2022	83 66.4 in 2022		12 0.44 in 2018
66.4 in 1922	66.4 in 1922		13 0.50 in 1999
			14 0.56 in 2009
			0.56 in 2000
			16 0.62 in 1939
			17 0.71 in 2022

Normal Temperature for February at SRQ = 64.8°
 Normal Rainfall for February at SRQ = 1.92 in.

Warmest Winters	Coolest Winters	Wettest Winters	Driest Winters
1 69.1 in 1931-32	1 55.8 in 1976-77	1 28.11 in 1997-98	1 0.14 in 1949-50
2 67.9 in 1949-50	2 56.9 in 1977-78	2 19.08 in 1914-15	2 1.26 in 2000-01
67.9 in 1948-49	3 57.1 in 1980-81	3 14.94 in 1935-36	3 1.35 in 1975-76
4 67.3 in 2019-20	4 57.3 in 1957-58	4 14.44 in 2002-03	4 1.69 in 1948-49
5 67.0 in 2016-17	5 57.6 in 1939-40	5 14.38 in 1977-78	5 1.88 in 1931-32
6 66.9 in 1936-37	6 58.0 in 1930-31	6 13.92 in 1913-14	6 1.90 in 2011-12
7 66.4 in 1956-57	7 58.2 in 2010-11	7 13.71 in 1992-93	7 2.00 in 1934-35
8 66.3 in 2018-19	8 58.6 in 2009-10	8 13.61 in 1963-64	8 2.07 in 2021-22
9 66.1 in 2007-08	9 59.0 in 1963-64	9 13.36 in 1982-83	9 2.14 in 1938-39
10 66.0 in 2011-12	10 59.5 in 1969-70	10 12.99 in 1957-58	10 2.86 in 1961-62
66.0 in 1990-91	59.5 in 1935-36		
12 65.9 in 2021-22			

Normal Temperature for Winter (Dec/Jan/Feb) at SRQ = 64.1°
 Normal Rainfall for Winter (Dec/Jan/Feb) at SRQ = 7.04 in.

VENICE (records began in May 1955):

Warmest Februarys	Coolest Februarys	Wettest Februarys	Driest Februarys
1 72.5 in 2018	1 54.2 in 1958	1 6.36 in 1957	1 0.00 in 2001
2 70.7 in 2019	2 55.0 in 1978	2 5.63 in 1998	2 0.10 in 1999
3 70.1 in 1959	3 57.2 in 1980	3 5.62 in 1978	3 0.15 in 1989
4 69.8 in 2012	4 58.1 in 1977	4 5.51 in 1963	4 0.29 in 1988
69.8 in 2001	5 58.3 in 1973	5 5.47 in 1972	5 0.30 in 1997
6 69.5 in 1997	6 58.8 in 1968	6 4.92 in 2002	6 0.36 in 1962
7 68.2 in 2021	7 58.9 in 2010	4.92 in 1964	7 0.39 in 2011
68.2 in 1994	8 59.0 in 1964	8 4.57 in 2015	8 0.41 in 1994
9 68.0 in 1989	9 59.7 in 1969	9 4.37 in 1992	9 0.60 in 2000
10 67.6 in 1956	10 60.3 in 2015	10 4.26 in 1960	10 0.68 in 2022
...	60.3 in 1963		
29 64.0 in 2022	31 64.0 in 2022		

Normal Temperature for February at VNCF1 = 64.6°

Normal Rainfall for February at VNCF1 = 2.00 in.

Warmest Winters	Coolest Winters	Wettest Winters	Driest Winters
1 68.3 in 1988-89	1 57.0 in 1976-77	1 19.42 in 1997-98	1 1.94 in 2011-12
2 68.1 in 1971-72	2 57.2 in 1957-58	2 14.71 in 1957-58	2 1.99 in 2021-22
3 67.9 in 2016-17	3 57.5 in 1977-78	3 12.68 in 2015-16	1.99 in 2000-01
67.9 in 2012-13	4 59.2 in 1975-76	4 12.65 in 1977-78	4 2.18 in 2016-17
5 67.5 in 2011-12	5 59.6 in 1963-64	5 12.35 in 2018-19	5 2.21 in 1975-76
6 67.0 in 1998-99	6 59.7 in 1969-70	6 12.01 in 1972-73	6 2.61 in 1961-62
7 66.6 in 2019-20	7 60.5 in 1962-63	7 11.45 in 1963-64	7 2.70 in 1984-85
8 66.2 in 1996-97	8 60.6 in 2010-11	8 11.34 in 1965-66	8 3.19 in 2012-13
9 65.9 in 2017-18	9 60.7 in 1979-80	9 11.20 in 2009-10	9 3.25 in 1996-97
10 65.8 in 1956-57	10 60.9 in 2002-03	10 10.94 in 1983-84	3.25 in 1973-74
11 65.5 in 2015-16	60.9 in 1968-69		
12 65.3 in 2018-19			
65.3 in 2007-08			
14 65.1 in 2021-22			

Normal Temperature for Winter (Dec/Jan/Feb) at VNCF1 = 63.8°

Normal Rainfall for Winter (Dec/Jan/Feb) at VNCF1 = 6.99 in.

MYAKKA RIVER STATE PARK (Temperature records began in March 1956
and Rainfall records began in September 1943):

Warmest Februarys		Coolest Februarys		Wettest Februarys		Driest Februarys	
1	72.3 in 2018	1	52.7 in 1958	1	11.28 in 1998	1	Trace in 2001
2	71.7 in 2019	2	54.9 in 1968	2	9.55 in 1983	2	0.01 in 1950
3	70.3 in 1982	3	56.7 in 1963	3	6.01 in 1963	3	0.02 in 1999
4	70.0 in 1997	4	56.9 in 2010	4	5.88 in 1981	4	0.23 in 1989
5	69.7 in 1992	5	57.0 in 1978	5	5.49 in 1978	5	0.28 in 1944
6	69.4 in 1959	6	57.9 in 1973	6	5.41 in 1957	6	0.32 in 2011
7	69.1 in 2001	7	58.6 in 1980	7	5.33 in 2015	7	0.34 in 1949
8	68.9 in 2012	8	58.9 in 1977	8	5.21 in 2002	8	0.41 in 1945
	68.9 in 1994	9	60.5 in 2009	9	4.97 in 1961	9	0.44 in 1948
10	68.7 in 1990	10	60.9 in 2015	10	4.62 in 1972	10	0.49 in 1976

Average Temperature for February 2022 = Not Available Yet
Normal Temperature for February at MKCF1 = 65.0°

Total Rainfall for February 2022 = Not Available Yet
Normal Rainfall for February at MKCF1 = 2.44 in.

Warmest Winters		Coolest Winters		Wettest Winters		Driest Winters	
1	68.4 in 2016-17	1	57.2 in 1962-63	1	27.20 in 1997-98	1	0.04 in 1949-50
2	66.7 in 1971-72	2	58.2 in 1976-77	2	16.36 in 1977-78	2	1.64 in 1943-44
3	66.6 in 1998-99	3	58.5 in 1980-81	3	14.36 in 2015-16	3	1.68 in 2000-01
4	66.5 in 1992-93	4	58.9 in 1977-78	4	14.27 in 1978-79	4	1.77 in 1948-49
5	66.4 in 1991-92	5	59.4 in 2002-03	5	13.83 in 1992-93	5	2.08 in 2011-12
6	66.3 in 2012-13	6	59.6 in 2009-10	6	13.60 in 1972-73	6	2.14 in 1984-85
7	66.1 in 2018-19	7	59.7 in 2010-11	7	13.28 in 1982-83	7	2.26 in 1944-45
	66.1 in 2013-14		59.7 in 1960-61	8	12.66 in 1957-58	8	2.51 in 1975-76
	66.1 in 1990-91	9	61.3 in 1975-76	9	12.60 in 2018-19	9	3.51 in 1970-71
10	66.0 in 2011-12	10	61.6 in 2000-01	10	12.09 in 2003-04	10	3.71 in 2005-06
	66.0 in 1974-75						

Average Temperature for Winter 2021-22 (Dec/Jan/Feb) = Not Available Yet
Normal Temperature for Winter (Dec/Jan/Feb) at MKCF1 = 64.0°

Total Rainfall for Winter 2021-22 (Dec/Jan/Feb) = Not Available Yet
Normal Rainfall for Winter (Dec/Jan/Feb) at MKCF1 = 7.80 in.

WAUCHULA 2 N (records began in January 1933):

Warmest Februarys	Coolest Februarys	Wettest Februarys	Driest Februarys
1 71.1 in 1949	1 46.7 in 2010	1 8.92 in 1936	1 0.00 in 2001
2 70.8 in 2018	2 54.4 in 1958	2 8.82 in 1998	0.00 in 2000
3 70.7 in 1939	3 56.3 in 1978	3 7.99 in 1983	3 0.19 in 1945
4 70.1 in 1959	4 57.1 in 1947	4 7.37 in 1963	4 0.22 in 1989
5 69.8 in 1933	5 57.3 in 1968	5 6.29 in 1992	5 0.30 in 1997
6 69.5 in 1982	6 58.3 in 2015	6 6.03 in 2002	6 0.33 in 1950
7 69.4 in 1990	7 58.5 in 2007	7 5.46 in 1960	7 0.45 in 2009
8 69.3 in 1975	58.5 in 1942	8 5.34 in 1942	0.45 in 1949
9 69.1 in 2019	9 58.7 in 1980	9 5.26 in 1937	9 0.52 in 2018
10 68.9 in 1962	10 58.9 in 1964	10 5.24 in 1952	10 0.56 in 2022
...	...		
34 64.4 in 2022	51 64.4 in 2022		
64.4 in 1950	64.4 in 1950		
64.4 in 1946	64.4 in 1946		

Normal Temperature for February at WAUF1 = 62.9°
 Normal Rainfall for February at WAUF1 = 2.18 in.

Warmest Winters	Coolest Winters	Wettest Winters	Driest Winters
1 68.8 in 1948-49	1 49.6 in 2009-10	1 21.20 in 1997-98	1 0.72 in 1949-50
2 68.5 in 1936-37	2 56.5 in 2010-11	2 16.61 in 1935-36	2 1.45 in 2000-01
3 67.4 in 1971-72	3 58.0 in 1977-78	3 14.21 in 1965-66	3 1.90 in 2011-12
4 67.3 in 2007-08	4 58.1 in 1980-81	4 14.16 in 1957-58	4 2.00 in 1948-49
5 66.4 in 1974-75	5 58.4 in 2002-03	5 13.26 in 1982-83	5 2.11 in 1938-39
6 66.2 in 1990-91	6 58.6 in 1969-70	6 12.58 in 1972-73	6 2.13 in 1934-35
7 66.0 in 2016-17	7 58.7 in 1976-77	7 12.15 in 1978-79	7 2.33 in 1975-76
8 65.9 in 1988-89	58.7 in 1939-40	8 11.65 in 2009-10	8 2.34 in 1984-85
9 65.8 in 1956-57	9 58.8 in 2003-04	9 11.53 in 2018-19	9 2.40 in 1999-00
10 65.7 in 1961-62	10 59.0 in 1963-64	10 11.48 in 2015-16	10 2.42 in 1943-44
...	...		11 2.64 in 2021-22
32 63.5 in 2021-22	43 63.5 in 2021-22		

Normal Temperature for Winter (Dec/Jan/Feb) at WAUF1 = 62.0°
 Normal Rainfall for Winter (Dec/Jan/Feb) at WAUF1 = 6.60 in.

ARCADIA (records began in November 1899):

Warmest Februarys		Coolest Februarys		Wettest Februarys		Driest Februarys	
1	71.2 in 1949	1	54.5 in 2010	1	10.13 in 1983	1	0.00 in 2001
2	71.0 in 2018	2	55.3 in 1958	2	9.71 in 1936		0.00 in 1916
3	70.4 in 1939	3	56.0 in 1978	3	7.08 in 1937	3	0.01 in 1999
4	70.3 in 1959	4	57.1 in 1968	4	6.86 in 1924	4	0.05 in 1918
5	70.1 in 1982	5	57.8 in 1947	5	5.92 in 1982	5	0.10 in 2011
	70.1 in 1932	6	58.0 in 1980	6	5.80 in 1963		0.10 in 1911
7	69.9 in 2019	7	58.8 in 1942	7	5.73 in 1998	7	0.15 in 1950
8	69.2 in 1933		58.8 in 1902	8	5.66 in 1902	8	0.24 in 1949
9	69.1 in 1975	9	59.1 in 2015	9	5.54 in 1903	9	0.26 in 1956
10	68.7 in 1997		59.1 in 2007	10	4.92 in 1960	10	0.43 in 1945
	68.7 in 1929		59.1 in 1973				
			59.1 in 1970				
			59.1 in 1912				

Average Temperature for February 2022 = Not Available Yet
 Normal Temperature for February at ARCF1 = 63.1°

Total Rainfall for February 2022 = Not Available Yet
 Normal Rainfall for February at ARCF1 = 2.00 in.

Warmest Winters		Coolest Winters		Wettest Winters		Driest Winters	
1	69.5 in 1931-32	1	57.1 in 1980-81	1	16.85 in 1997-98	1	0.27 in 1949-50
2	68.9 in 1948-49	2	57.2 in 2010-11	2	15.63 in 1935-36	2	0.97 in 1948-49
3	68.6 in 1912-13	3	57.5 in 2009-10	3	14.10 in 1982-83		0.97 in 1910-11
4	67.8 in 1936-37	4	57.7 in 1957-58	4	13.42 in 1977-78	4	1.17 in 2000-01
5	66.8 in 1971-72	5	57.8 in 1977-78	5	13.03 in 1905-06	5	1.62 in 2011-12
	66.8 in 1932-33	6	58.5 in 1976-77	6	12.98 in 1978-79	6	2.06 in 1984-85
7	66.7 in 1949-50		58.5 in 1969-70	7	12.78 in 2015-16		2.06 in 1932-33
8	66.6 in 1956-57	8	58.6 in 1939-40	8	12.45 in 1902-03	8	2.15 in 1926-27
9	66.3 in 2016-17	9	59.3 in 1930-31	9	12.14 in 1914-15	9	2.19 in 1975-76
10	66.1 in 1974-75	10	59.5 in 2002-03	10	12.11 in 1941-42	10	2.20 in 2008-09
			59.5 in 1901-02				

Average Temperature for Winter 2021-22 (Dec/Jan/Feb) = Not Available Yet
 Normal Temperature for Winter (Dec/Jan/Feb) at ARCF1 = 62.2°

Total Rainfall for Winter 2021-22 (Dec/Jan/Feb) = Not Available Yet
 Normal Rainfall for Winter (Dec/Jan/Feb) at ARCF1 = 6.13 in.

ARCHBOLD BIO STATION (records began in January 1969):

Warmest Februarys	Coolest Februarys	Wettest Februarys	Driest Februarys
1 71.3 in 2018	1 55.2 in 1978	1 10.85 in 1983	1 0.00 in 2001
2 69.8 in 2019	2 55.4 in 2010	2 8.28 in 1998	2 0.22 in 2011
3 69.3 in 2001	3 56.8 in 1980	3 5.00 in 2004	3 0.27 in 1999
4 68.9 in 1990	4 57.8 in 1969	4 4.73 in 1992	4 0.33 in 1989
68.9 in 1982	5 58.1 in 1973	5 4.32 in 2020	5 0.37 in 2000
6 68.6 in 1975	6 58.2 in 1970	6 3.86 in 2002	6 0.38 in 2009
7 68.2 in 2021	7 59.2 in 1988	7 3.57 in 1970	7 0.49 in 1975
8 68.1 in 1997	8 59.3 in 2009	8 3.51 in 2016	8 0.53 in 1977
9 67.3 in 2012	9 59.8 in 2006	9 3.46 in 1981	9 0.54 in 2018
10 67.2 in 2017	59.8 in 1977	10 3.31 in 2006	10 0.73 in 2003
67.2 in 1994			

Average Temperature for February 1-21, 2022 = 64.3°

Normal Temperature for February at ACHF1 = 64.2°

Total Rainfall for February 1-21, 2022 = 0.34 in.

Normal Rainfall for February at ACHF1 = 2.25 in.

Warmest Winters	Coolest Winters	Wettest Winters	Driest Winters
1 67.4 in 2016-17	1 57.0 in 1980-81	1 21.53 in 1997-98	1 0.64 in 2000-01
2 66.2 in 1971-72	2 57.4 in 1969-70	2 16.19 in 2015-16	2 1.44 in 1975-76
3 65.9 in 2019-20	3 58.1 in 1976-77	3 15.77 in 1982-83	3 1.77 in 1984-85
4 65.7 in 1974-75	4 58.2 in 1977-78	4 13.16 in 1978-79	4 2.04 in 2016-17
5 65.4 in 1990-91	5 58.5 in 2010-11	5 11.18 in 1969-70	5 2.43 in 2011-12
6 65.1 in 2015-16	6 58.6 in 2009-10	6 10.16 in 2003-04	6 2.64 in 2008-09
7 65.0 in 2017-18	7 60.0 in 2002-03	7 9.94 in 1972-73	7 2.68 in 1970-71
65.0 in 2007-08	60.0 in 1995-96	8 9.71 in 1994-95	8 3.44 in 1981-82
9 64.8 in 2018-19	9 60.2 in 1979-80	9 9.12 in 2018-19	9 3.48 in 2017-18
64.8 in 2012-13	10 60.4 in 2003-04	10 9.09 in 1977-78	10 3.50 in 1998-99
	60.4 in 1987-88		

Average Temperature for Winter 2021-22 (Dec/Jan/Feb) thru Feb 25 = 63.9°

Normal Temperature for Winter (Dec/Jan/Feb) at ACHF1 = 63.4°

Total Rainfall for Winter 2021-22 (Dec/Jan/Feb) thru Feb 25 = 2.24 in.

Normal Rainfall for Winter (Dec/Jan/Feb) at ACHF1 = 6.46 in.

PUNTA GORDA AREA (Temperature records began in July 1914
and Rainfall records began in May 1914):

Warmest Februarys	Coolest Februarys	Wettest Februarys	Driest Februarys
1 74.4 in 1949	1 57.3 in 1958	1 12.11 in 1936	1 0.00 in 1950
2 73.2 in 2018	2 57.5 in 2010	2 11.05 in 1983	2 0.01 in 2001
3 71.2 in 1959	57.5 in 1978	3 5.68 in 1963	3 0.04 in 1938
71.2 in 1932	4 58.6 in 1968	4 5.61 in 1982	0.04 in 1932
5 70.8 in 2019	5 58.9 in 1980	5 5.59 in 1937	5 0.09 in 1929
6 70.7 in 1918	6 59.3 in 1942	6 5.26 in 1998	6 0.13 in 1999
7 70.6 in 1982	7 59.5 in 1969	7 4.88 in 1924	7 0.18 in 1974
70.6 in 1962	8 59.8 in 1973	8 4.62 in 1964	8 0.25 in 1918
9 70.3 in 1957	9 60.1 in 1920	9 4.50 in 1952	9 0.26 in 1945
10 70.2 in 1939	10 60.2 in 1970	10 4.41 in 1940	10 0.27 in 1949
70.2 in 1933	60.2 in 1947		0.27 in 1926
...
35 66.8 in 2022	67 66.8 in 2022	79 0.78 in 2022	26 0.78 in 2022
66.8 in 1989	66.8 in 1989		

Normal Temperature for February at PGD = 65.5°
Normal Rainfall for February at PGD = 2.47 in.

Warmest Winters	Coolest Winters	Wettest Winters	Driest Winters
1 72.0 in 1948-49	1 59.1 in 1977-78	1 16.32 in 1935-36	1 0.58 in 1949-50
2 70.7 in 1931-32	2 59.3 in 1976-77	2 15.66 in 2015-16	2 0.62 in 2000-01
3 70.2 in 1949-50	59.3 in 1969-70	3 15.45 in 1997-98	3 1.24 in 1938-39
4 69.2 in 1932-33	4 59.7 in 2010-11	4 15.16 in 1982-83	4 1.55 in 1948-49
5 68.5 in 1956-57	5 59.9 in 1957-58	5 12.66 in 1925-26	5 1.67 in 2011-12
6 68.3 in 1961-62	6 60.0 in 1980-81	6 12.65 in 1940-41	6 1.87 in 1927-28
7 68.0 in 1971-72	60.0 in 1963-64	7 11.76 in 1977-78	7 2.08 in 1973-74
8 67.9 in 1936-37	8 60.5 in 1939-40	8 11.71 in 1930-31	8 2.13 in 1932-33
9 67.4 in 2016-17	9 60.6 in 1975-76	9 11.51 in 1978-79	9 2.20 in 1961-62
67.4 in 1946-47	60.6 in 1968-69	10 11.42 in 1958-59	10 2.26 in 2016-17
...
23 66.4 in 2021-22	71 66.4 in 2021-22	75 3.80 in 2021-22	30 3.80 in 2021-22
66.4 in 1938-39	66.4 in 1938-39		

Normal Temperature for Winter (Dec/Jan/Feb) at PGD = 64.8°
Normal Rainfall for Winter (Dec/Jan/Feb) at PGD = 6.78 in.

FORT MYERS AREA (records began in January 1902):

Warmest Februarys	Coolest Februarys	Wettest Februarys	Driest Februarys
1 74.9 in 2018	1 55.5 in 1958	1 10.82 in 1983	1 Trace in 2001
2 72.9 in 2019	2 57.2 in 1978	2 7.12 in 1998	Trace in 1944
3 72.3 in 1997	3 58.8 in 1947	3 6.79 in 1902	Trace in 1911
4 72.2 in 1982	4 59.2 in 1902	4 5.93 in 1934	4 0.06 in 1948
5 71.8 in 1949	5 59.4 in 2010	5 5.50 in 1936	5 0.07 in 1949
6 71.4 in 2017	59.4 in 1942	6 5.13 in 1913	6 0.08 in 1950
71.4 in 2001	7 59.9 in 1968	7 4.65 in 1963	0.08 in 1929
8 71.3 in 1990	8 60.0 in 1912	8 4.34 in 1952	8 0.10 in 1905
9 71.2 in 2012	9 60.1 in 1970	9 4.00 in 1940	9 0.11 in 2000
10 71.1 in 2022	10 60.4 in 1941	10 3.89 in 1992	0.11 in 1943
71.1 in 1959	
		103 0.48 in 2022	19 0.48 in 2022

Normal Temperature for February at FMY = 67.3°
 Normal Rainfall for February at FMY = 1.78 in.

Warmest Winters	Coolest Winters	Wettest Winters	Driest Winters
1 70.9 in 2016-17	1 58.2 in 1957-58	1 18.71 in 2015-16	1 0.45 in 2000-01
2 70.7 in 1931-32	2 59.7 in 1969-70	2 15.59 in 1982-83	2 0.71 in 1948-49
3 70.1 in 1948-49	3 59.8 in 1976-77	3 15.19 in 1997-98	3 0.80 in 1910-11
4 69.8 in 1971-72	4 60.0 in 1977-78	4 13.74 in 1978-79	4 1.14 in 1984-85
5 69.7 in 2021-22	5 61.3 in 1980-81	5 12.26 in 1940-41	5 1.21 in 1926-27
6 69.6 in 2019-20	61.3 in 1939-40	6 12.02 in 1925-26	6 1.42 in 1974-75
7 69.4 in 1990-91	7 61.5 in 1963-64	7 11.51 in 2003-04	7 1.43 in 1904-05
8 69.1 in 1936-37	61.5 in 1950-51	8 11.06 in 1902-03	8 1.47 in 1928-29
9 69.0 in 2007-08	61.5 in 1903-04	9 10.85 in 1957-58	9 1.50 in 1961-62
10 68.8 in 1996-97	10 61.6 in 1930-31	10 10.51 in 1969-70	10 1.53 in 1938-39
	
		86 3.07 in 2021-22	35 3.07 in 2021-22

Normal Temperature for Winter (Dec/Jan/Feb) at FMY = 66.4°
 Normal Rainfall for Winter (Dec/Jan/Feb) at FMY = 6.11 in.

For more local climate information, please visit our web page at <https://www.weather.gov/tampabay> and look within the "Climate and Past Weather" drop down menu above the map of the area.