



NOAA - National Weather Service

Tampa Bay Area

2525 14th Avenue SE, Ruskin, Florida 33570

813-645-2323 <https://weather.gov/tampabay>

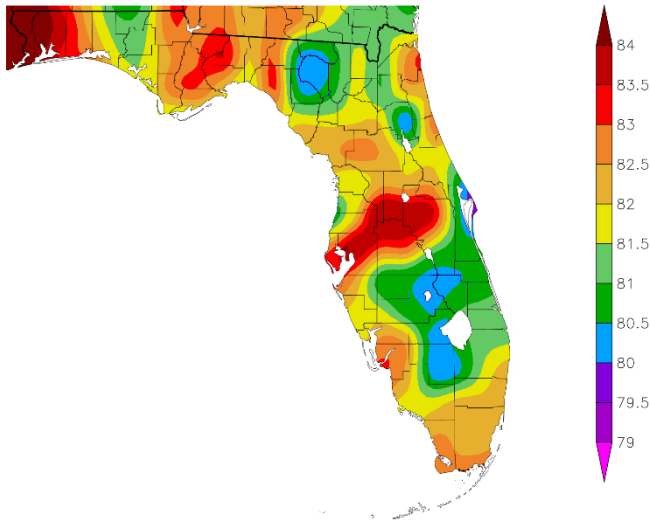
June 2022 Climate Summary for West Central and Southwest Florida

Temperatures this June were generally near to above normal with several days having Heat Advisories in effect for parts of the region where heat indices climbed to between 108 and 112 degrees. These warm temperatures placed several locations in the Top Ten Warmest for June.

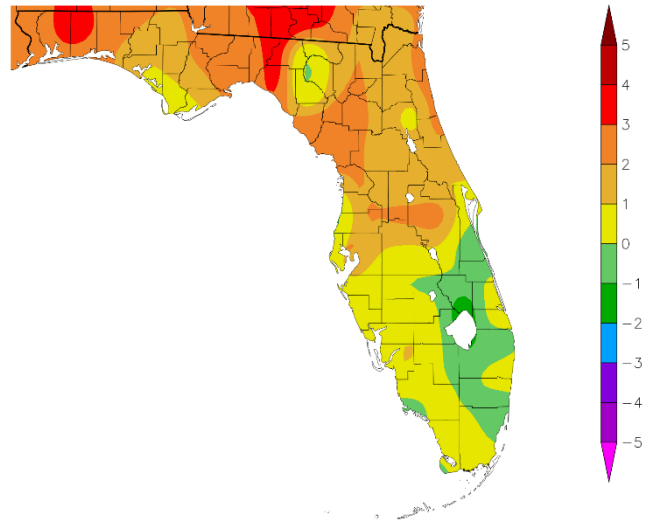
JUNE TEMPERATURE RANKINGS (°F) :

| Location | Rank | June 2022 Avg Temp | Normal June Temp | Dep fm Normal | Records Began |
|-------------------------|-------------------|-----------------------|---------------------|------------------|------------------|
| Tampa Area | 2nd Warmest | 85.2° | 82.9° | +2.3° | Apr 1890 |
| Plant City | 3rd Warmest | 84.1° | 82.4° | +1.7° | Sep 1892 |
| Winter Haven Area | 7th Warmest(tie) | 83.6° | 83.0° | +0.6° | Mar 1941 |
| St Petersburg Area | 17th Warmest | 83.4° | 82.8° | +0.6° | Aug 1914 |
| Lakeland Area | 14th Warmest(tie) | 82.8° | 81.8° | +1.0° | Jan 1915 |
| Fort Myers Area | 17th Warmest(tie) | 82.8° | 82.3° | +0.5° | Jan 1902 |
| Sarasota-Bradenton Area | 7th Warmest(tie) | 82.2° | 81.8° | +0.4° | Jan 1911 |
| Chiefland 5 ESE | 3rd Warmest(tie) | 82.1° | 79.3° | +2.8° | Jul 1956 |
| Punta Gorda Area | 20th Warmest(tie) | 82.1° | 81.7° | +0.4° | May 1914 |
| Bartow | 34th Warmest(tie) | 81.8° | 81.1° | +0.7° | Jun 1892 |
| Brooksville Area | 9th Warmest(tie) | 81.7° | 80.1° | +1.6° | Jan 1892 |
| St. Leo | 25th Warmest | 81.7° | 80.2° | +1.5° | Apr 1895 |
| Venice | 21st Warmest | 81.5° | 81.4° | +0.1° | May 1955 |
| Myakka River St. Pk | 24th Coolest(tie) | 80.4° | 81.2° | -0.8° | Mar 1956 |
| Archbold Bio Stn | 30th Coolest(tie) | 80.0° | 80.5° | -0.5° | Jan 1969 |

Temperature (F)
6/1/2022 - 6/30/2022



Departure from Normal Temperature (F)
6/1/2022 - 6/30/2022

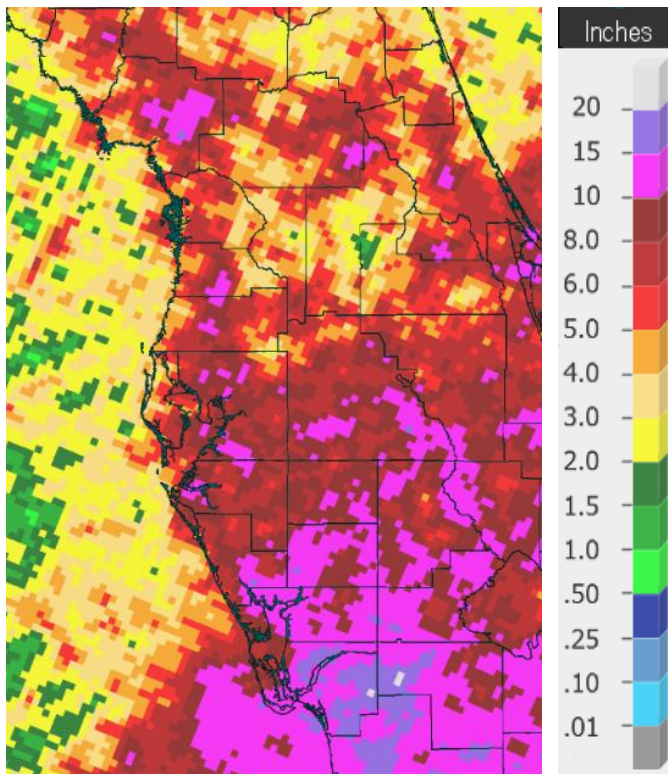


Graphics Source: NOAA Regional Climate Centers

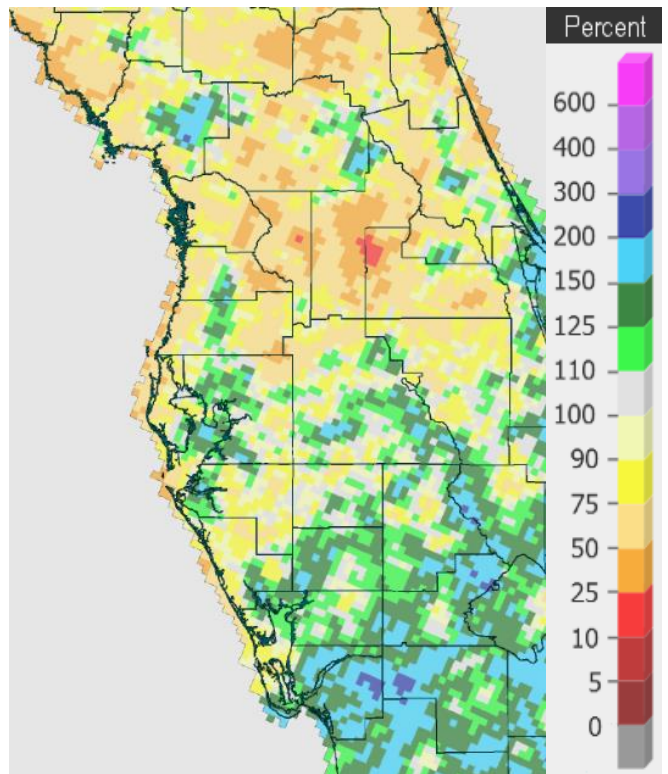
As for rainfall, it was a pretty typical June as our rainy season got underway with scattered to numerous showers and thunderstorms on many days. However, not that uncommon thanks to the random nature of our thunderstorms during the rainy season, we saw a wide range in rainfall amounts with some spots well below normal while others were well above normal.

JUNE RAINFALL RANKINGS (°F) :

| Location | Rank | June 2022 Rain Total | Normal June Rain | Dep fm Normal | Records Began |
|-------------------------|--------------|-------------------------|---------------------|------------------|------------------|
| Fort Myers Area | 18th Wettest | 14.08 | 9.66 | +4.42 | Jan 1902 |
| Punta Gorda Area | 19th Wettest | 11.98 | 9.24 | +2.74 | May 1914 |
| Myakka River St. Pk. | 20th Wettest | 10.96 | 9.95 | +1.01 | Sep 1943 |
| Archbold Bio Stn | 19th Wettest | 9.54 | 8.85 | +0.69 | Jan 1969 |
| Sarasota-Bradenton Area | 35th Wettest | 8.10 | 7.05 | +1.05 | Jan 1911 |
| Tampa Area | 42nd Wettest | 8.07 | 7.37 | +0.70 | Apr 1890 |
| Brooksville Area | 74th Driest | 7.68 | 7.91 | -0.23 | Jan 1892 |
| Plant City | 37th Driest | 5.78 | 9.71 | -3.93 | Feb 1893 |
| St. Petersburg Area | 60th Driest | 5.62 | 6.79 | -1.17 | Aug 1914 |
| Venice | 29th Driest | 5.61 | 7.81 | -2.20 | May 1955 |
| Bartow | 33rd Driest | 5.61 | 8.28 | -2.67 | Jun 1892 |
| Winter Haven Area | 30th Driest | 5.46 | 7.36 | -1.90 | Mar 1941 |
| St. Leo | 24th Driest | 5.00 | 8.34 | -3.34 | Apr 1895 |
| Tarpon Springs | 50th Driest | 4.39 | 7.06 | -2.67 | Jan 1892 |
| Chiefland 5 ESE | 5th Driest | 2.62 | 8.03 | -5.41 | Jul 1956 |



June 2022 Rainfall



Percent of Normal

On the following pages are tables of the Top Ten Warmest, Coolest, Wettest and Driest Junes at some official NWS locations, which include the average/total for this June where available, and the 1991-2020 Normal (average) temperature and rainfall for the month of June.

Chiefland 5 ESE (records began July 1956):

| Warmest Junes | Coollest Junes | Wettest Junes | Driest Junes |
|-----------------------|-----------------|------------------|-----------------------|
| 1 82.6 in 1998 | 1 77.0 in 1965 | 1 15.06 in 2003 | 1 1.00 in 1998 |
| 2 82.3 in 2016 | 2 77.1 in 1974 | 2 14.12 in 2012 | 2 1.27 in 1977 |
| 3 82.1 in 2022 | 77.1 in 1966 | 3 13.11 in 1974 | 3 1.97 in 1971 |
| 82.1 in 2015 | 4 77.4 in 1963 | 4 12.90 in 1965 | 4 2.33 in 1991 |
| 5 81.7 in 1989 | 5 77.7 in 1997 | 5 12.03 in 2018 | 5 2.62 in 2022 |
| 6 81.3 in 1985 | 77.7 in 1984 | 6 11.98 in 2002 | 6 3.10 in 1963 |
| 7 81.2 in 2018 | 7 77.9 in 2006 | 7 11.84 in 2009 | 7 3.27 in 1979 |
| 8 81.0 in 2019 | 77.9 in 1962 | 8 11.64 in 1983 | 8 3.48 in 1968 |
| 81.0 in 2011 | 9 78.0 in 1995 | 9 11.49 in 2016 | 9 3.51 in 2008 |
| 81.0 in 1977 | 10 78.1 in 1961 | 10 11.35 in 1995 | 10 3.63 in 2010 |

Normal Temperature for June Temp at CHIF1 = 79.3°
Normal Rainfall for June at CHIF1 = 8.03 in.

Inverness 3 SE (records began July 1948):

| Warmest Junes | Coollest Junes | Wettest Junes | Driest Junes |
|-----------------|-----------------|------------------|-----------------|
| 1 83.6 in 1981 | 1 77.7 in 1995 | 1 21.84 in 2003 | 1 1.69 in 1977 |
| 2 83.5 in 2010 | 2 78.1 in 1976 | 2 17.44 in 1974 | 2 1.95 in 1981 |
| 3 83.4 in 1998 | 3 78.2 in 1997 | 3 15.45 in 1982 | 3 2.07 in 1998 |
| 4 83.2 in 2019 | 4 78.4 in 2003 | 4 14.88 in 2012 | 4 2.73 in 1954 |
| 5 82.9 in 1969 | 5 78.6 in 1966 | 5 13.29 in 2021 | 5 2.93 in 2010 |
| 82.9 in 1952 | 6 78.9 in 1991 | 6 13.13 in 1989 | 6 3.14 in 1964 |
| 7 82.7 in 1950 | 78.9 in 1955 | 7 12.19 in 1985 | 7 3.31 in 2015 |
| 8 82.5 in 2016 | 8 79.0 in 2012 | 8 12.06 in 1960 | 8 3.70 in 1963 |
| 82.5 in 1958 | 9 79.0 in 1994 | 9 12.04 in 1965 | 9 3.80 in 1987 |
| 10 82.4 in 2015 | 10 79.2 in 2017 | 10 11.66 in 2009 | 10 3.91 in 1979 |
| 82.4 in 2011 | | | |
| 82.4 in 1977 | | | |

Average Temperature for June 2022 = Not Available Yet
Normal Temperature for June at INV1 = 79.7°

Total Rainfall for June 2022 = Not Available Yet
Normal Rainfall for June at INV1 = 8.13 in.

Brooksville Area (records began January 1892):

| Warmest Junes | Coollest Junes | Wettest Junes | Driest Junes |
|-----------------------|----------------|------------------------|------------------------|
| 1 84.2 in 1927 | 1 76.6 in 1917 | 1 21.68 in 2012 | 1 0.67 in 1998 |
| 2 82.7 in 1998 | 2 77.1 in 1920 | 2 20.81 in 1945 | 2 0.91 in 1979 |
| 3 82.2 in 1909 | 77.1 in 1894 | 3 19.29 in 2003 | 3 2.27 in 1977 |
| 82.2 in 1899 | 4 77.6 in 1966 | 4 14.64 in 2013 | 4 2.56 in 1956 |
| 5 82.1 in 1964 | 5 77.9 in 1910 | 5 14.37 in 1974 | 5 2.68 in 1988 |
| 82.1 in 1914 | 6 78.1 in 1946 | 6 14.29 in 1982 | 2.68 in 1931 |
| 7 81.9 in 2010 | 78.1 in 1930 | 7 14.19 in 1893 | 7 3.05 in 1933 |
| 81.9 in 1935 | 8 78.3 in 1976 | 8 13.94 in 1912 | 8 3.11 in 1954 |
| 9 81.7 in 2022 | 78.3 in 1965 | 9 13.89 in 1934 | 9 3.63 in 1918 |
| 81.7 in 1950 | 78.3 in 1919 | 10 13.69 in 1929 | 10 3.86 in 2011 |
| 81.7 in 1944 | | ... | ... |
| | | 57 7.68 in 2022 | 74 7.68 in 2022 |

Normal Temperature for June at BKV = 80.1°
Normal Rainfall for June at BKV = 7.91 in.

St. Leo (records began April 1895):

| Warmest Junes | Coollest Junes | Wettest Junes | Driest Junes |
|------------------------|-------------------------|-------------------------|------------------------|
| 1 86.4 in 1998 | 1 75.9 in 1930 | 1 24.26 in 1934 | 1 0.08 in 1998 |
| 2 83.3 in 1981 | 2 77.1 in 1920 | 2 20.30 in 2012 | 2 1.60 in 1973 |
| 3 83.1 in 1952 | 3 77.3 in 1919 | 3 19.08 in 1974 | 3 2.14 in 1979 |
| 4 82.9 in 1897 | 4 77.7 in 1966 | 4 18.00 in 1896 | 4 2.33 in 1967 |
| 5 82.8 in 1948 | 77.7 in 1923 | 5 17.25 in 1943 | 5 2.68 in 1948 |
| 6 82.7 in 1899 | 6 78.1 in 2012 | 6 16.90 in 1945 | 6 2.95 in 1951 |
| 7 82.6 in 2009 | 78.1 in 1933 | 7 16.31 in 2005 | 7 3.02 in 1958 |
| 82.6 in 2004 | 8 78.3 in 1922 | 8 14.70 in 1999 | 8 3.16 in 1895 |
| 82.6 in 1898 | 78.3 in 1916 | 9 14.35 in 2002 | 9 3.28 in 1980 |
| 10 82.4 in 1985 | 78.3 in 1903 | 10 13.91 in 1910 | 10 3.62 in 1915 |
| 82.4 in 1950 | | ... | ... |
| ... | ... | 105 5.00 in 2022 | 24 5.00 in 2022 |
| 25 81.7 in 2022 | 102 81.7 in 2022 | | |

Normal Temperature for June at STLF1 = 80.2°
Normal Rainfall for June at STLF1 = 8.34 in.

Tarpon Springs (records began January 1892):

| Warmest Junes | Coollest Junes | Wettest Junes | Driest Junes |
|----------------|----------------|------------------------|------------------------|
| 1 84.6 in 2004 | 1 77.2 in 1894 | 1 21.73 in 2012 | 1 0.62 in 1991 |
| 2 84.2 in 1998 | 2 77.9 in 1907 | 2 18.29 in 1974 | 2 0.72 in 1998 |
| 3 84.0 in 2019 | 77.9 in 1900 | 3 18.10 in 1909 | 3 1.17 in 1935 |
| 4 83.9 in 2010 | 4 78.1 in 1939 | 4 14.08 in 1934 | 4 1.47 in 1955 |
| 5 83.6 in 2005 | 78.1 in 1908 | 5 13.47 in 1900 | 5 1.49 in 1950 |
| 6 83.3 in 2018 | 6 78.3 in 1892 | 6 13.21 in 1912 | 6 1.56 in 1947 |
| 83.3 in 1994 | 7 78.4 in 1974 | 7 12.71 in 1943 | 7 1.63 in 1980 |
| 8 83.2 in 2020 | 78.4 in 1955 | 8 12.12 in 1957 | 8 1.70 in 1931 |
| 83.2 in 2016 | 78.4 in 1910 | 9 11.69 in 2001 | 9 1.73 in 1979 |
| 83.2 in 1927 | 78.4 in 1895 | 10 11.60 in 2019 | 10 1.83 in 1971 |
| | | ... | 1.83 in 1921 |
| | | 80 4.39 in 2022 | 50 4.39 in 2022 |

Average Temperature for June 1-29, 2022 = Several days missing/unrepresentative
 Normal Temperature for June at TRPF1 = 82.0°
 Normal Rainfall for June at TRPF1 = 7.06 in.

Tampa Area (records began April 1890):

| Warmest Junes | Coollest Junes | Wettest Junes | Driest Junes |
|-----------------------|-----------------|------------------------|------------------------|
| 1 85.6 in 1998 | 1 78.5 in 1930 | 1 18.66 in 2012 | 1 1.26 in 1918 |
| 2 85.2 in 2022 | 2 78.6 in 1955 | 2 18.52 in 1945 | 2 1.46 in 1997 |
| 3 84.8 in 2010 | 3 78.9 in 1976 | 3 15.92 in 1934 | 3 1.47 in 1931 |
| 4 84.0 in 2020 | 78.9 in 1913 | 4 13.75 in 1974 | 4 1.77 in 2014 |
| 5 83.8 in 2021 | 78.9 in 1892 | 5 13.47 in 1912 | 5 1.86 in 1951 |
| 83.8 in 2019 | 6 79.1 in 1966 | 6 13.42 in 1896 | 6 2.03 in 1978 |
| 6 83.7 in 1985 | 7 79.2 in 1923 | 7 13.19 in 2003 | 7 2.05 in 1970 |
| 83.7 in 1977 | 79.2 in 1910 | 8 12.60 in 2021 | 8 2.07 in 1979 |
| 9 83.6 in 2018 | 79.2 in 1903 | 9 12.54 in 1943 | 9 2.41 in 1922 |
| 83.6 in 2011 | 10 79.3 in 1916 | 10 12.41 in 1892 | 10 2.54 in 1971 |
| | 79.3 in 1908 | ... | ... |
| | 79.3 in 1894 | 42 8.07 in 2022 | 92 8.07 in 2022 |

Normal Temperature for June at TPA = 82.9°
 Normal Rainfall for June at TPA = 7.37 in.

St Petersburg (records began August 1914):

| Warmest Junes | Coollest Junes | Wettest Junes | Driest Junes |
|------------------------|----------------|------------------------|------------------------|
| 1 86.5 in 2010 | 1 79.1 in 1955 | 1 23.00 in 1974 | 1 0.90 in 1979 |
| 2 84.9 in 1998 | 2 79.6 in 1930 | 2 16.88 in 1943 | 2 1.03 in 1948 |
| 3 84.6 in 2004 | 3 80.0 in 1974 | 3 16.60 in 1995 | 3 1.26 in 1931 |
| 4 84.5 in 1977 | 4 80.3 in 1923 | 4 14.80 in 2016 | 4 2.05 in 1973 |
| 5 84.3 in 1973 | 80.3 in 1920 | 5 12.99 in 2003 | 5 2.21 in 1993 |
| 6 84.2 in 1969 | 6 80.4 in 1976 | 6 12.95 in 2012 | 6 2.35 in 1949 |
| 7 84.1 in 1987 | 80.4 in 1922 | 7 12.29 in 1939 | 7 2.36 in 2004 |
| 84.1 in 1981 | 80.4 in 1916 | 8 12.12 in 1945 | 8 2.56 in 1977 |
| 9 84.0 in 1944 | 9 80.5 in 1995 | 9 11.63 in 1968 | 9 2.63 in 1980 |
| 10 83.9 in 2020 | 80.5 in 1968 | 10 11.02 in 1990 | 10 2.73 in 1916 |
| ... | 80.5 in 1966 | ... | ... |
| 17 83.4 in 2022 | 80.5 in 1956 | 48 5.62 in 2022 | 60 5.62 in 2022 |
| | 80.5 in 1949 | | |

Normal Temperature for June at SPG = 82.8°

Normal Rainfall for June at SPG = 6.79 in.

Plant City (records began September 1892):

| Warmest Junes | Coollest Junes | Wettest Junes | Driest Junes |
|-----------------------|-----------------|------------------------|------------------------|
| 1 84.5 in 2019 | 1 76.4 in 1933 | 1 17.08 in 1968 | 1 0.56 in 1979 |
| 2 84.3 in 2020 | 2 76.5 in 1930 | 2 17.01 in 2017 | 2 1.09 in 1948 |
| 3 84.1 in 2022 | 3 77.1 in 1931 | 3 16.48 in 1943 | 3 1.50 in 1961 |
| 4 83.8 in 1998 | 4 77.6 in 1976 | 4 16.44 in 1896 | 4 1.72 in 1931 |
| 5 83.5 in 2021 | 5 77.9 in 1936 | 5 16.37 in 1945 | 5 1.95 in 1998 |
| 6 83.4 in 2010 | 6 78.0 in 1966 | 6 16.24 in 1986 | 6 2.50 in 1993 |
| 7 83.2 in 2017 | 7 78.1 in 1938 | 7 15.44 in 2013 | 7 2.65 in 1956 |
| 83.2 in 2016 | 78.1 in 1932 | 8 15.34 in 1992 | 8 3.08 in 1898 |
| 83.2 in 1981 | 78.1 in 1925 | 9 14.98 in 2012 | 9 3.44 in 1950 |
| 10 83.0 in 2018 | 10 78.2 in 1929 | 10 14.93 in 1934 | 10 3.53 in 1973 |
| | 78.2 in 1907 | | 3.53 in 1895 |
| | | ... | ... |
| | | 87 5.78 in 2022 | 37 5.78 in 2022 |

Normal Temperature for June at PLCF1 = 82.4°

Normal Rainfall for June at PLCF1 = 9.71 in.

Lakeland (records began January 1915):

| Warmest Junes | Coollest Junes | Wettest Junes | Driest Junes |
|------------------------|-----------------|------------------|-----------------|
| 1 84.8 in 2010 | 1 76.8 in 1930 | 1 15.55 in 2012 | 1 1.86 in 1998 |
| 2 84.5 in 1998 | 2 77.8 in 1966 | 2 14.86 in 1968 | 2 1.87 in 1948 |
| 3 83.5 in 1985 | 77.8 in 1929 | 3 14.63 in 1934 | 3 2.22 in 1915 |
| 4 83.4 in 2015 | 4 78.2 in 1919 | 4 14.48 in 2005 | 4 2.54 in 1931 |
| 5 83.3 in 1987 | 5 78.3 in 2007 | 5 14.00 in 1939 | 5 2.97 in 1971 |
| 83.3 in 1981 | 78.3 in 1920 | 6 13.55 in 1974 | 6 3.06 in 1979 |
| 83.3 in 1977 | 7 78.4 in 1968 | 7 13.12 in 1930 | 7 3.18 in 2010 |
| 8 83.1 in 2019 | 8 78.5 in 1965 | 8 13.10 in 2013 | 8 3.31 in 1970 |
| 83.1 in 2016 | 9 79.0 in 1976 | 9 13.09 in 1992 | 9 3.37 in 1952 |
| 10 83.0 in 1990 | 10 79.2 in 1974 | 10 13.04 in 2017 | 10 3.47 in 1955 |
| 83.0 in 1989 | 79.2 in 1923 | | 3.47 in 1918 |
| 12 82.9 in 2020 | 79.2 in 1921 | | |
| 82.9 in 1927 | | | |
| 14 82.8 in 2022 | | | |
| 82.8 in 2018 | | | |
| 82.8 in 1994 | | | |

Normal Temperature for June at LLDF1 = 81.8°

Total Rainfall for June 2022 = 7.24 in., but rainfall on June 18 missing
Normal Rainfall for June at LLDF1 = 8.69 in.

Winter Haven Area (records began March 1941):

| Warmest Junes | Coollest Junes | Wettest Junes | Driest Junes |
|-----------------------|-----------------|------------------------|------------------------|
| 1 85.5 in 1998 | 1 77.6 in 1968 | 1 16.44 in 1992 | 1 0.66 in 1998 |
| 2 84.9 in 2010 | 2 78.5 in 1976 | 2 15.04 in 1968 | 2 2.49 in 1993 |
| 3 84.5 in 2019 | 3 78.6 in 1974 | 3 14.46 in 1945 | 3 2.62 in 1973 |
| 4 84.2 in 1985 | 78.6 in 1971 | 4 13.75 in 2015 | 4 2.72 in 1957 |
| 5 84.0 in 1989 | 5 78.9 in 1972 | 5 13.67 in 2012 | 5 3.38 in 2000 |
| 6 83.7 in 2004 | 6 79.0 in 1966 | 6 13.07 in 1974 | 6 3.41 in 1963 |
| 7 83.6 in 2022 | 7 79.2 in 1980 | 7 12.50 in 2005 | 7 3.50 in 2007 |
| 83.6 in 2015 | 79.2 in 1965 | 8 12.08 in 2013 | 8 3.52 in 1979 |
| 83.6 in 1952 | 9 79.4 in 1960 | 9 11.87 in 1994 | 9 3.58 in 1952 |
| 10 83.4 in 2020 | 10 79.5 in 1967 | 10 11.25 in 2017 | 10 3.70 in 1970 |
| 83.4 in 2016 | 79.5 in 1962 | ... | ... |
| 83.4 in 2011 | | 50 5.46 in 2022 | 30 5.46 in 2022 |
| | | 5.46 in 1964 | 5.46 in 1964 |

Normal Temperature for June at GIF = 83.0°
Normal Rainfall for June at GIF = 7.36 in.

Bartow (records began January 1892):

| Warmest Junes | Coollest Junes | Wettest Junes | Driest Junes |
|------------------------|------------------------|------------------------|------------------------|
| 1 85.9 in 1998 | 1 77.4 in 1894 | 1 21.62 in 1912 | 1 0.73 in 1964 |
| 2 85.7 in 2015 | 2 77.7 in 1913 | 2 17.76 in 1934 | 2 0.79 in 1998 |
| 3 84.0 in 2014 | 3 77.9 in 1936 | 3 16.97 in 2005 | 3 1.41 in 1948 |
| 4 83.9 in 2010 | 4 78.1 in 1892 | 4 16.32 in 2003 | 4 2.12 in 1931 |
| 5 83.7 in 1927 | 5 78.4 in 1930 | 5 15.78 in 1939 | 5 2.41 in 1973 |
| 6 83.4 in 1969 | 6 78.6 in 1966 | 6 15.03 in 1945 | 6 2.59 in 1905 |
| 83.4 in 1944 | 7 78.7 in 1938 | 7 15.00 in 1949 | 7 3.09 in 1993 |
| 8 83.3 in 2013 | 8 78.8 in 1919 | 8 14.39 in 1894 | 8 3.22 in 1950 |
| 9 83.2 in 1981 | 78.8 in 1912 | 9 14.35 in 1942 | 9 3.52 in 1980 |
| 10 83.1 in 2009 | 10 79.0 in 1972 | 10 13.74 in 1953 | 10 3.64 in 1911 |
| ... | 79.0 in 1916 | ... | ... |
| ... | ... | 99 5.61 in 2022 | 33 5.61 in 2022 |
| 34 81.8 in 2022 | 92 81.8 in 2022 | | |
| 81.8 in 1994 | 81.8 in 1994 | | |
| 81.8 in 1993 | 81.8 in 1993 | | |

Normal Temperature for June at BARF1 = 81.1°

Normal Rainfall for June at BARF1 = 8.28 in.

Sarasota-Bradenton Area (records began January 1911):

| Warmest Junes | Coollest Junes | Wettest Junes | Driest Junes |
|-----------------------|----------------|------------------------|------------------------|
| 1 83.9 in 1998 | 1 76.4 in 1913 | 1 25.60 in 1912 | 1 0.64 in 1998 |
| 2 83.5 in 2010 | 2 77.5 in 1930 | 2 23.30 in 1943 | 2 1.20 in 2011 |
| 3 83.4 in 2019 | 3 77.8 in 1976 | 3 22.34 in 1992 | 3 1.28 in 1918 |
| 83.4 in 2016 | 4 78.0 in 1916 | 4 15.45 in 2012 | 4 1.30 in 2007 |
| 5 82.8 in 2020 | 5 78.1 in 1955 | 5 13.49 in 1945 | 5 1.46 in 1956 |
| 6 82.6 in 2021 | 6 78.2 in 1933 | 6 13.39 in 1968 | 6 1.58 in 1951 |
| 7 82.2 in 2022 | 7 78.3 in 1956 | 7 12.40 in 1974 | 7 1.68 in 1926 |
| 82.2 in 2018 | 78.3 in 1931 | 8 12.27 in 1976 | 8 1.69 in 1948 |
| 9 82.1 in 1950 | 9 78.5 in 1947 | 9 12.08 in 1957 | 9 2.44 in 1931 |
| 10 81.9 in 2013 | 78.5 in 1920 | 10 11.93 in 2020 | 10 2.51 in 2004 |
| 81.9 in 2009 | | ... | ... |
| | | 35 8.10 in 2022 | 78 8.10 in 2022 |

Normal Temperature for June at SRQ = 81.8°

Normal Rainfall for June at SRQ = 7.05 in.

Myakka River State Park (Temperature records began March 1956/
Rainfall records began September 1943):

| Warmest Junes | Coollest Junes | Wettest Junes | Driest Junes |
|------------------------|------------------------|-------------------------|-----------------|
| 1 85.2 in 1998 | 1 78.1 in 1962 | 1 26.16 in 1992 | 1 1.75 in 2007 |
| 2 84.4 in 2010 | 2 78.4 in 1968 | 2 22.74 in 2003 | 2 1.76 in 2011 |
| 3 83.0 in 2019 | 3 78.5 in 1976 | 3 20.94 in 2017 | 3 2.25 in 2018 |
| 83.0 in 2018 | 4 78.6 in 1984 | 4 20.03 in 1974 | 4 2.49 in 1980 |
| 5 82.5 in 1994 | 78.6 in 1960 | 5 19.92 in 2012 | 5 2.87 in 1984 |
| 6 82.3 in 1981 | 6 78.9 in 1974 | 6 17.03 in 1995 | 2.87 in 1948 |
| 7 82.1 in 2015 | 7 79.2 in 1961 | 7 16.60 in 1968 | 7 3.07 in 1979 |
| 82.1 in 1985 | 79.2 in 1959 | 8 16.53 in 2005 | 8 3.20 in 1988 |
| 9 82.0 in 2011 | 9 79.4 in 1986 | 9 15.84 in 2013 | 9 3.53 in 1955 |
| 10 81.9 in 2016 | 79.4 in 1963 | 10 15.77 in 1981 | 10 3.55 in 1956 |
| ... | ... | ... | |
| 33 80.4 in 2022 | 24 80.4 in 2022 | 20 10.96 in 2022 | |
| 80.4 in 2014 | 80.4 in 2014 | | |
| 80.4 in 1993 | 80.4 in 1993 | | |
| 80.4 in 1958 | 80.4 in 1958 | | |

Normal Temperature for June at MKCF1 = 81.2°
Normal Rainfall for June at MKCF1 = 9.95 in.

Venice (records began May 1955):

| Warmest Junes | Coollest Junes | Wettest Junes | Driest Junes |
|------------------------|----------------|------------------------|------------------------|
| 1 86.4 in 2010 | 1 78.6 in 1955 | 1 25.91 in 1992 | 1 1.04 in 1980 |
| 2 85.7 in 1998 | 2 78.7 in 1966 | 2 19.31 in 2003 | 1.04 in 1979 |
| 3 84.0 in 2019 | 3 79.0 in 1988 | 3 19.18 in 2005 | 3 1.06 in 1988 |
| 4 83.9 in 2004 | 79.0 in 1984 | 4 16.78 in 2012 | 4 1.33 in 1990 |
| 5 83.7 in 2011 | 5 79.3 in 1974 | 5 14.16 in 1995 | 5 1.38 in 1960 |
| 6 83.0 in 2009 | 79.3 in 1961 | 6 12.59 in 1962 | 6 1.57 in 2011 |
| 7 82.8 in 2020 | 79.3 in 1960 | 7 11.93 in 1974 | 7 1.69 in 2018 |
| 82.8 in 2018 | 8 79.6 in 1975 | 8 11.50 in 1982 | 8 2.01 in 1961 |
| 82.8 in 2013 | 79.6 in 1967 | 9 11.17 in 1968 | 9 2.43 in 1985 |
| 10 82.6 in 1994 | 79.6 in 1956 | 10 10.76 in 2001 | 10 2.45 in 1955 |
| ... | | ... | ... |
| 21 81.5 in 2022 | | 38 5.61 in 2022 | 29 5.61 in 2022 |

Normal Temperature for June at VNCF1 = 81.4°
Normal Rainfall for June at VNCF1 = 7.81 in.

Wauchula 2 N (records began January 1933):

| Warmest Junes | Coollest Junes | Wettest Junes | Driest Junes |
|-----------------|-----------------|------------------|-----------------|
| 1 83.9 in 2009 | 1 78.0 in 1955 | 1 19.40 in 1939 | 1 1.69 in 1998 |
| 2 83.4 in 1998 | 2 78.1 in 2012 | 2 17.61 in 2017 | 2 2.40 in 1952 |
| 3 82.9 in 2008 | 78.1 in 1996 | 3 16.20 in 2005 | 3 3.02 in 1948 |
| 4 82.6 in 1993 | 78.1 in 1976 | 4 16.03 in 1952 | 4 3.17 in 2018 |
| 82.6 in 1985 | 5 78.2 in 1994 | 5 15.96 in 1982 | 5 3.18 in 2000 |
| 82.6 in 1969 | 6 78.9 in 1999 | 6 15.85 in 1968 | 6 3.26 in 1964 |
| 7 82.2 in 1987 | 78.9 in 1966 | 7 15.24 in 1945 | 7 3.48 in 1958 |
| 82.2 in 1981 | 78.9 in 1956 | 8 15.11 in 1913 | 8 3.53 in 2010 |
| 9 82.1 in 2010 | 9 79.0 in 1965 | 9 14.97 in 1974 | 9 3.69 in 1956 |
| 10 81.9 in 2019 | 10 79.1 in 2014 | 10 14.77 in 1962 | 10 3.72 in 1960 |
| 81.9 in 1990 | 79.1 in 2007 | | |

Average Temperature for June 1-28, 2022 = 80.6°

Normal Temperature for June at WAUF1 = 80.5°

Total Rainfall for June 1-28, 2022 = 6.22 in.

Normal Rainfall for June at WAUF1 = 8.46 in.

Archbold Bio Stn (records began January 1969):

| Warmest Junes | Coollest Junes | Wettest Junes | Driest Junes |
|------------------------|------------------------|------------------------|-----------------|
| 1 83.5 in 2010 | 1 77.1 in 1984 | 1 18.66 in 2002 | 1 0.90 in 1998 |
| 2 82.2 in 1998 | 2 77.4 in 1976 | 2 17.33 in 2013 | 2 1.70 in 1979 |
| 3 81.9 in 2017 | 3 78.1 in 1999 | 3 15.85 in 1986 | 3 2.40 in 1980 |
| 4 81.6 in 2016 | 4 78.2 in 2007 | 4 15.77 in 1992 | 4 2.79 in 2010 |
| 5 81.4 in 2019 | 78.2 in 1971 | 5 14.12 in 1974 | 5 3.01 in 1988 |
| 81.4 in 1981 | 6 78.4 in 1970 | 6 13.89 in 2005 | 6 3.27 in 1987 |
| 7 81.2 in 1985 | 7 78.5 in 1996 | 7 12.73 in 2015 | 7 3.76 in 2000 |
| 8 81.1 in 2015 | 8 78.7 in 1974 | 8 12.21 in 1969 | 8 4.64 in 2006 |
| 9 81.0 in 1987 | 9 78.8 in 1983 | 9 11.35 in 1994 | 9 4.79 in 1989 |
| 10 80.8 in 2004 | 78.8 in 1973 | 10 11.14 in 1982 | 10 4.89 in 2014 |
| ... | ... | ... | |
| 22 80.0 in 2022 | 30 80.0 in 2022 | 19 9.54 in 2022 | |
| 80.0 in 2011 | 80.0 in 2011 | | |
| 80.0 in 1994 | 80.0 in 1994 | | |
| 80.0 in 1978 | 80.0 in 1978 | | |

Normal Temperature for June at ACHF1 = 80.5°

Normal Rainfall for June at ACHF1 = 8.85 in

Punta Gorda Area (records began May 1914):

| Warmest Junes | Coollest Junes | Wettest Junes | Driest Junes |
|------------------------|----------------|-------------------------|-----------------|
| 1 84.1 in 1998 | 1 78.3 in 1930 | 1 23.99 in 1974 | 1 2.00 in 1979 |
| 2 83.8 in 2010 | 2 78.9 in 1938 | 2 20.29 in 1939 | 2 2.16 in 1960 |
| 3 83.6 in 2018 | 3 79.1 in 1976 | 3 19.75 in 1992 | 3 2.30 in 1920 |
| 4 83.3 in 2020 | 79.1 in 1929 | 4 17.63 in 1995 | 4 3.06 in 1924 |
| 83.3 in 1948 | 5 79.2 in 1936 | 5 16.66 in 2003 | 5 3.08 in 1927 |
| 6 83.1 in 1985 | 6 79.3 in 1971 | 6 16.51 in 1999 | 6 3.37 in 1964 |
| 83.1 in 1951 | 79.3 in 1955 | 7 15.93 in 1943 | 7 3.48 in 2007 |
| 8 83.0 in 2016 | 8 79.5 in 1968 | 8 15.92 in 1949 | 3.48 in 1977 |
| 83.0 in 1945 | 79.5 in 1967 | 9 15.39 in 1946 | 3.48 in 1916 |
| 10 82.9 in 1994 | 79.5 in 1923 | 10 14.81 in 2017 | 10 4.12 in 1952 |
| ... | | ... | |
| 20 82.1 in 2022 | | 19 11.98 in 2022 | |
| 82.1 in 2011 | | | |
| 82.1 in 1964 | | | |
| 82.1 in 1944 | | | |
| 82.1 in 1924 | | | |

Normal Temperature for June at PNTF1 = 81.7°

Normal Rainfall for June at PNTF1 = 9.24 in.

Fort Myers Area (records began January 1902):

| Warmest Junes | Coollest Junes | Wettest Junes | Driest Junes |
|------------------------|-----------------|-------------------------|-----------------|
| 1 85.9 in 1981 | 1 78.5 in 1908 | 1 27.61 in 1912 | 1 1.99 in 1980 |
| 2 85.3 in 2010 | 2 78.6 in 1904 | 2 20.25 in 1936 | 2 2.48 in 2014 |
| 3 84.5 in 1998 | 3 78.7 in 1930 | 3 20.10 in 1974 | 3 3.59 in 1932 |
| 4 84.0 in 1997 | 78.7 in 1910 | 4 18.73 in 1992 | 4 3.73 in 1944 |
| 5 83.8 in 1994 | 5 78.8 in 1976 | 5 18.42 in 2005 | 5 3.76 in 1985 |
| 6 83.7 in 1985 | 6 78.9 in 1955 | 6 17.92 in 1983 | 3.76 in 1913 |
| 83.7 in 1982 | 7 79.0 in 1912 | 7 16.43 in 1939 | 7 3.96 in 1931 |
| 8 83.4 in 1980 | 79.0 in 1903 | 8 16.10 in 1959 | 8 3.99 in 1973 |
| 9 83.2 in 2009 | 9 79.2 in 1917 | 9 16.06 in 1943 | 9 4.52 in 2001 |
| 83.2 in 1944 | 10 79.3 in 1918 | 10 15.11 in 1922 | 10 4.58 in 1964 |
| | 79.3 in 1913 | ... | |
| ... | | 18 14.08 in 2022 | |
| 17 82.8 in 2022 | | | |
| 82.8 in 1991 | | | |
| 82.8 in 1987 | | | |

Normal Temperature for June at FMY = 82.3°

Normal Rainfall for June at FMY = 9.66 in.

For more Climate information visit our web site at the following link:
<https://www.weather.gov/tampabay> and then go to the Climate and Past Weather
drop down menu above the graphical forecast images.