



# NOAA - National Weather Service

Tampa Bay Area

2525 14th Avenue SE, Ruskin, Florida 33570

813-645-2323 <https://weather.gov/tampabay>

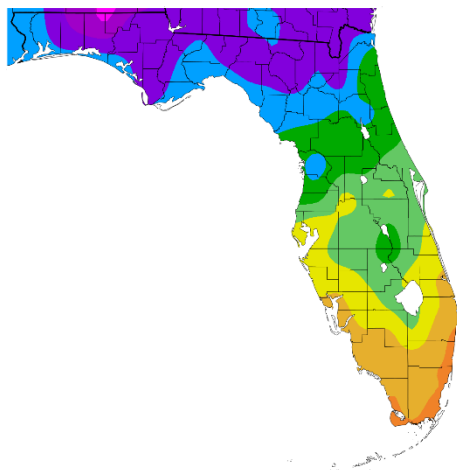
## October 2023 Climate Summary for West Central and Southwest Florida

October 2023 started out rather hot and humid, but a couple of cold fronts moved through, one during the second week and another during the third, knocking temperatures down below normal for several days. This kept average temperatures for the month within a degree or so of normal.

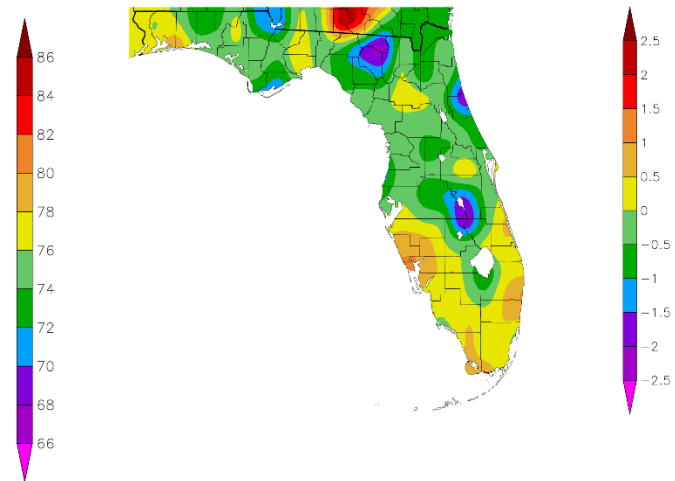
### OCTOBER TEMPERATURE (°F) :

| Location                | October 2023       |          | Normal Oct Temp | Dep fm Normal | Records Began |
|-------------------------|--------------------|----------|-----------------|---------------|---------------|
|                         | Rank               | Avg Temp |                 |               |               |
| Fort Myers Area         | 27th Warmest (tie) | 78.5°    | 78.0°           | +0.5°         | Jan 1902      |
| Punta Gorda Area        | 21st Warmest       | 78.1°    | 77.2°           | +0.9°         | May 1914      |
| Sarasota-Bradenton Area | 18th Warmest       | 77.8°    | 77.3°           | +0.5°         | Jan 1911      |
| Venice                  | 16th Warmest (tie) | 77.6°    | 76.6°           | +1.0°         | May 1955      |
| Tampa Area              | 21st Warmest (tie) | 77.5°    | 77.4°           | +0.1°         | Apr 1890      |
| St Petersburg Area      | 62nd Coolest (tie) | 77.5°    | 77.8°           | -0.3°         | Aug 1914      |
| Plant City              | 85th Coolest (tie) | 76.2°    | 76.7°           | -0.5°         | Sep 1892      |
| Lakeland Area           | 70th Coolest (tie) | 76.0°    | 76.4°           | -0.4°         | Jan 1915      |
| Winter Haven Area       | 34th Coolest (tie) | 75.7°    | 77.1°           | -1.4°         | Mar 1941      |
| Archbold Bio Stn        | 31st Coolest (tie) | 75.5°    | 75.7°           | -0.2°         | Jan 1969      |
| Wauchula 2 N            | 45th Warmest       | 75.3°    | 75.3°           | 0.0°          | Jan 1933      |
| Bartow                  | 53rd Coolest (tie) | 74.8°    | 75.5°           | -0.7°         | Jun 1892      |
| St. Leo                 | 58th Coolest (tie) | 73.7°    | 74.1°           | -0.4°         | Apr 1895      |
| Brooksville Area        | 49th Coolest (tie) | 72.9°    | 73.1°           | -0.2°         | Jan 1892      |

Temperature (F)  
10/1/2023 - 10/31/2023



Departure from Normal Temperature (F)  
10/1/2023 - 10/31/2023



©2023 of HPRCC using provisional data.

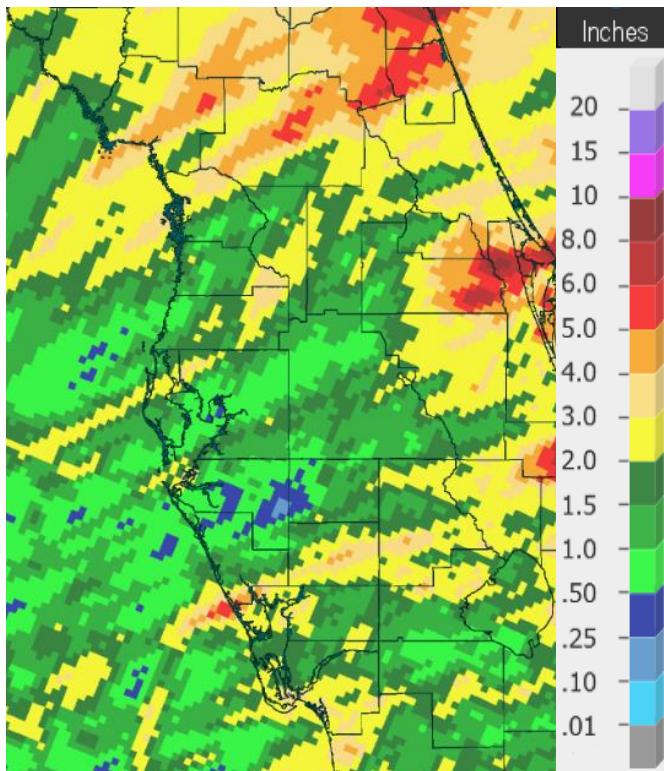
NOAA Regional Climate C

Graphics Source: NOAA Regional Climate Centers

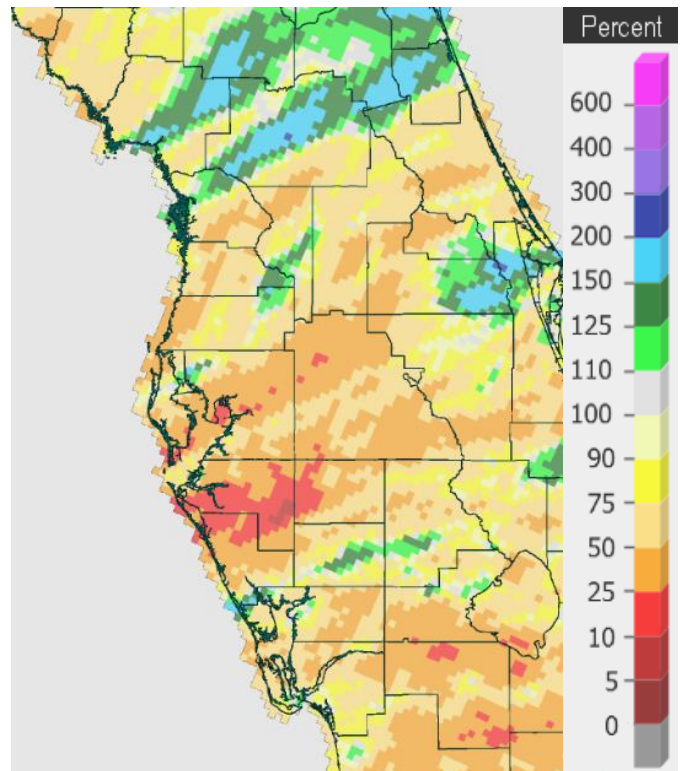
Rainfall in October 2023 was mostly below normal with some areas here and there seeing above normal amounts. Some of the below normal amounts ended up just outside the Top Ten Driest for October.

**OCTOBER RAINFALL (inches) :**

| Location                | October 2023 Rank | October 2023 Rain Total | Normal Oct Rain | Dep fm Normal | Records Began |
|-------------------------|-------------------|-------------------------|-----------------|---------------|---------------|
| Archbold Bio Stn        | 8th Wettest       | 5.34                    | 3.41            | +1.93         | Jan 1969      |
| St. Leo                 | 36th Wettest      | 3.93                    | 3.06            | +0.87         | Apr 1895      |
| Punta Gorda Area        | 55th Driest       | 2.78                    | 3.02            | -0.24         | May 1914      |
| Lakeland Area           | 63rd Driest       | 2.53                    | 3.04            | -0.51         | Jan 1915      |
| Bartow                  | 65th Driest (tie) | 2.25                    | 3.03            | -0.78         | Jun 1892      |
| Fort Myers Area         | 43rd Driest       | 1.90                    | 3.08            | -1.18         | Jan 1902      |
| Brooksville Area        | 45th Driest       | 1.15                    | 2.79            | -1.64         | Jan 1892      |
| Tarpon Springs          | 37th Driest (tie) | 1.08                    | 3.19            | -2.11         | Jan 1892      |
| Plant City              | 24th Driest (tie) | 0.94                    | 2.58            | -1.64         | Sep 1892      |
| Wauchula 2 N            | 17th Driest       | 0.89                    | 3.09            | -2.20         | Jan 1933      |
| Winter Haven Area       | 15th Driest       | 0.81                    | 2.22            | -1.41         | Mar 1941      |
| Venice                  | 13th Driest       | 0.76                    | 3.35            | -2.59         | May 1955      |
| Sarasota-Bradenton Area | 18th Driest       | 0.70                    | 2.76            | -2.06         | Jan 1911      |
| St. Petersburg Area     | 12th Driest       | 0.44                    | 2.16            | -1.72         | Aug 1914      |
| Tampa Area              | 13th Driest       | 0.38                    | 2.34            | -1.96         | Apr 1890      |



**Rainfall October 2023**



**Percent of Normal**

On the following pages are tables of the Top Ten Warmest, Coolest, Driest, and Wettest Octobers at some official NWS locations, which include the average/total for this October where available, and the 1991-2020 Normal (average) temperature and rainfall for the month of October.

**CHIEFLAND 5 SE** (records began in July 1956):

| Warmest Octobers |              | Coolest Octobers |              | Wettest Octobers |              | Driest Octobers |              |
|------------------|--------------|------------------|--------------|------------------|--------------|-----------------|--------------|
| 1                | 77.1 in 1959 | 1                | 66.9 in 1987 | 1                | 8.45 in 1959 | 1               | 0.00 in 2010 |
| 2                | 76.9 in 2018 | 2                | 67.1 in 1976 | 2                | 8.17 in 1997 | 2               | 0.02 in 2022 |
| 3                | 76.6 in 2020 | 3                | 67.4 in 1977 | 3                | 7.32 in 1995 | 3               | 0.11 in 2001 |
| 4                | 76.5 in 2019 | 4                | 67.6 in 1957 | 4                | 7.12 in 1971 | 4               | 0.14 in 1973 |
| 5                | 75.5 in 1985 | 5                | 67.9 in 1967 | 5                | 7.01 in 1993 | 5               | 0.15 in 1979 |
| 6                | 75.0 in 1998 |                  | 67.9 in 1964 | 6                | 6.98 in 2019 |                 | 0.15 in 1974 |
| 7                | 74.6 in 2002 | 7                | 68.0 in 1974 | 7                | 6.44 in 1992 | 7               | 0.17 in 2000 |
| 8                | 74.5 in 2007 | 8                | 68.5 in 2011 | 8                | 6.41 in 2007 | 8               | 0.20 in 1987 |
| 9                | 74.2 in 1971 | 9                | 68.6 in 2010 | 9                | 6.40 in 2002 | 9               | 0.23 in 1981 |
|                  | 74.2 in 1970 | 10               | 68.8 in 2022 | 10               | 5.66 in 1983 | 10              | 0.24 in 1984 |

Average Temperature for October 2023 = Not Available Yet  
 Normal Temperature for October at CHIF1 = 71.5°

Total Rainfall for October 2023 = Not Available Yet  
 Normal Rainfall for October at CHIF1 = 3.17 inches

**INVERNESS 3 SE** (records began in July 1948):

| Warmest Octobers |              | Coolest Octobers |              | Wettest Octobers |               | Driest Octobers |               |
|------------------|--------------|------------------|--------------|------------------|---------------|-----------------|---------------|
| 1                | 78.4 in 2019 | 1                | 67.8 in 1987 | 1                | 10.60 in 1958 | 1               | Trace in 1974 |
| 2                | 78.2 in 1959 | 2                | 68.1 in 1976 | 2                | 9.04 in 1992  | 2               | 0.03 in 2010  |
| 3                | 77.6 in 2020 | 3                | 69.7 in 1977 | 3                | 6.73 in 2019  |                 | 0.03 in 1961  |
| 4                | 77.3 in 1949 | 4                | 69.9 in 2011 | 4                | 5.81 in 1995  | 4               | 0.19 in 1963  |
| 5                | 76.8 in 2007 | 5                | 70.1 in 1992 | 5                | 5.71 in 1956  | 5               | 0.20 in 2000  |
| 6                | 76.0 in 1970 | 6                | 70.2 in 1988 | 6                | 5.68 in 1960  | 6               | 0.62 in 1967  |
| 7                | 75.7 in 1995 | 7                | 70.5 in 1997 | 7                | 5.53 in 1959  | 7               | 0.69 in 2015  |
| 8                | 75.6 in 1969 | 8                | 70.6 in 1954 | 8                | 5.38 in 1993  | 8               | 0.70 in 1987  |
| 9                | 75.5 in 1971 | 9                | 70.8 in 2006 | 9                | 5.33 in 1975  | 9               | 0.71 in 2018  |
|                  | 75.5 in 1960 |                  | 70.8 in 2001 | 10               | 4.91 in 1971  | 10              | 0.74 in 1977  |
|                  | 75.5 in 1950 |                  |              |                  |               |                 |               |

Average Temperature for October 2023 = Not Available Yet  
 Normal Temperature for October at INVF1 = 72.4°

Total Rainfall for October 2023 = Not Available Yet  
 Normal Rainfall for October at INVF1 = 2.92 inches

**BROOKSVILLE AREA** (records began in January 1892):

| Warmest Octobers       | Coolest Octobers       | Wettest Octobers       | Driest Octobers        |
|------------------------|------------------------|------------------------|------------------------|
| 1 78.5 in 1959         | 1 69.4 in 1920         | 1 15.64 in 1921        | 1 0.00 in 2010         |
| 78.5 in 1919           | 2 69.7 in 1892         | 2 12.52 in 1915        | 2 0.01 in 1974         |
| 3 78.4 in 1911         | 3 70.3 in 2010         | 3 10.77 in 1995        | 3 0.07 in 2000         |
| 4 78.3 in 1941         | 4 70.4 in 2000         | 4 9.63 in 1944         | 4 0.12 in 1984         |
| 5 78.1 in 2019         | 70.4 in 1952           | 5 8.97 in 1958         | 5 0.18 in 1951         |
| 6 77.7 in 2020         | 6 70.5 in 1923         | 6 8.92 in 1922         | 6 0.22 in 1963         |
| 7 77.1 in 2007         | 7 70.7 in 1953         | 7 7.58 in 1936         | 7 0.28 in 1935         |
| 8 77.0 in 1949         | 70.7 in 1924           | 8 7.50 in 1952         | 8 0.30 in 1901         |
| 9 76.8 in 1915         | 9 70.8 in 1943         | 9 6.87 in 1911         | 9 0.35 in 1977         |
| 10 76.7 in 1928        | 10 70.9 in 2008        | 10 6.35 in 1910        | 10 0.36 in 1979        |
| 76.7 in 1912           | 70.9 in 1896           | ...                    | ...                    |
| ...                    | ...                    | <b>85 1.15 in 2023</b> | <b>45 1.15 in 2023</b> |
| <b>63 72.9 in 2023</b> | <b>49 72.9 in 2023</b> |                        |                        |
| 72.9 in 1999           | 72.9 in 1999           |                        |                        |

Normal Temperature for October at BKV = 73.1°

Normal Rainfall for October at BKV = 2.79 inches

-----

**ST LEO** (records began in April 1895):

| Warmest Octobers       | Coolest Octobers       | Wettest Octobers       | Driest Octobers        |
|------------------------|------------------------|------------------------|------------------------|
| 1 79.6 in 1985         | 1 69.2 in 1930         | 1 15.80 in 1921        | 1 0.00 in 2010         |
| 2 78.9 in 2002         | 2 69.4 in 1903         | 2 10.38 in 1924        | 2 0.03 in 2000         |
| 3 78.8 in 1941         | 3 69.9 in 1920         | 3 9.66 in 1910         | 3 0.10 in 1974         |
| 4 78.6 in 2007         | 4 70.0 in 1943         | 4 8.45 in 1922         | 0.10 in 1940           |
| 5 78.4 in 2019         | 5 70.1 in 1987         | 5 7.89 in 2007         | 5 0.14 in 1963         |
| 78.4 in 2009           | 6 70.4 in 2011         | 6 7.49 in 1944         | 6 0.23 in 1984         |
| 78.4 in 1959           | 7 70.5 in 1992         | 7 7.23 in 2012         | 7 0.29 in 1978         |
| 8 78.0 in 1919         | 8 70.7 in 1917         | 8 7.11 in 1938         | 0.29 in 1961           |
| 9 77.7 in 2020         | 9 70.9 in 1976         | 9 6.68 in 1959         | 9 0.30 in 1920         |
| 10 77.3 in 1949        | 10 71.0 in 1938        | 10 6.55 in 1915        | 0.30 in 1907           |
| 77.3 in 1925           | 71.0 in 1929           | ...                    | ...                    |
| ...                    | ...                    | <b>36 3.93 in 2023</b> | <b>92 3.93 in 2023</b> |
| <b>69 73.7 in 2023</b> | <b>58 73.7 in 2023</b> |                        |                        |
| 73.7 in 2015           | 73.7 in 2015           |                        |                        |
| 73.7 in 1916           | 73.7 in 1916           |                        |                        |

Normal Temperature for October at STLF1 = 74.1°

Normal Rainfall for October at STLF1 = 3.06 inches

**TARPON SPRINGS** (records began in January 1892):

| Warmest Octobers | Coolest Octobers | Wettest Octobers       | Driest Octobers        |
|------------------|------------------|------------------------|------------------------|
| 1 81.2 in 1919   | 1 70.3 in 1987   | 1 14.13 in 1995        | 1 0.02 in 2010         |
| 2 79.8 in 2019   | 2 71.0 in 1940   | 2 12.43 in 1921        | 2 0.04 in 2000         |
| 3 79.7 in 1985   | 3 71.1 in 1913   | 3 10.91 in 1938        | 3 0.06 in 1940         |
| 4 79.2 in 2018   | 4 71.2 in 1974   | 4 10.33 in 1911        | 4 0.07 in 1974         |
| 5 79.0 in 1941   | 71.2 in 1943     | 5 9.49 in 1975         | 5 0.08 in 1963         |
| 6 78.7 in 2007   | 6 71.5 in 1938   | 6 9.20 in 1992         | 6 0.11 in 1961         |
| 7 78.5 in 1911   | 71.5 in 1907     | 7 8.13 in 1922         | 7 0.12 in 1942         |
| 8 78.2 in 1949   | 8 71.6 in 1917   | 8 7.57 in 1917         | 8 0.25 in 1905         |
| 9 78.1 in 2020   | 71.6 in 1908     | 9 6.89 in 1936         | 9 0.31 in 1979         |
| 10 77.9 in 1995  | 71.6 in 1892     | 10 6.38 in 1968        | 10 0.34 in 1903        |
| 77.9 in 1918     |                  | ...                    | ...                    |
|                  |                  | <b>95 1.08 in 2023</b> | <b>37 1.08 in 2023</b> |
|                  |                  | 1.08 in 1988           | 1.08 in 1988           |

Average Temperature for October 2023 = Several Days Missing/Unrepresentative  
Normal Temperature for October at TRPF1 = 75.6°  
Normal Rainfall for October at TRPF1 = 3.19 inches

---

**TAMPA AREA** (records began in April 1890):

| Warmest Octobers       | Coolest Octobers | Wettest Octobers | Driest Octobers        |
|------------------------|------------------|------------------|------------------------|
| 1 81.5 in 2020         | 1 70.0 in 1891   | 1 10.33 in 1922  | 1 Trace in 2010        |
| 2 81.1 in 2019         | 2 70.8 in 1964   | 2 9.88 in 1921   | 2 0.02 in 1940         |
| 3 80.4 in 2021         | 3 70.9 in 1976   | 3 7.36 in 1952   | 3 0.03 in 1942         |
| 80.4 in 1919           | 4 71.3 in 1987   | 4 6.94 in 2019   | 4 0.06 in 2000         |
| 5 80.0 in 2018         | 5 71.7 in 1943   | 6.94 in 1938     | 5 0.09 in 1988         |
| 6 79.8 in 2007         | 71.7 in 1913     | 6 6.26 in 1959   | 6 0.12 in 1920         |
| 7 79.6 in 1959         | 71.7 in 1908     | 7 6.21 in 1986   | 7 0.16 in 1979         |
| 8 79.4 in 1941         | 71.7 in 1903     | 8 5.67 in 1944   | 8 0.23 in 1974         |
| 9 79.2 in 1985         | 9 71.8 in 1957   | 9 5.66 in 1911   | 9 0.25 in 1961         |
| 10 78.8 in 2002        | 10 72.0 in 1938  | 10 5.25 in 1924  | 10 0.29 in 1984        |
| ...                    |                  |                  | 0.29 in 1963           |
| <b>21 77.5 in 2023</b> |                  |                  | 12 0.36 in 1901        |
| 77.5 in 1998           |                  |                  | <b>13 0.38 in 2023</b> |
| 77.5 in 1971           |                  |                  |                        |

Normal Temperature for October at TPA = 77.4°  
Normal Rainfall for October at TPA = 2.34 inches

**ST PETERSBURG AREA** (records began in August 1914):

| Warmest Octobers       | Coolest Octobers       | Wettest Octobers | Driest Octobers        |
|------------------------|------------------------|------------------|------------------------|
| 1 81.7 in 1985         | 1 72.3 in 1952         | 1 17.63 in 1986  | 1 0.00 in 1942         |
| 2 81.5 in 2019         | 2 73.0 in 1987         | 2 14.12 in 1952  | 2 Trace in 2010        |
| 3 81.4 in 2021         | 73.0 in 1938           | 3 10.05 in 1922  | 3 0.12 in 2000         |
| 81.4 in 1919           | 4 73.1 in 1964         | 4 9.55 in 1938   | 4 0.14 in 1974         |
| 5 81.0 in 2018         | 5 73.2 in 1953         | 5 9.13 in 1921   | 5 0.20 in 1998         |
| 6 80.6 in 2020         | 6 73.4 in 1957         | 6 8.59 in 1959   | 6 0.23 in 2022         |
| 80.6 in 1941           | 7 73.5 in 1943         | 7 8.14 in 1918   | 7 0.29 in 1961         |
| 8 80.0 in 2002         | 73.5 in 1917           | 8 8.09 in 1944   | 8 0.30 in 1988         |
| 9 79.9 in 1959         | 9 73.7 in 1920         | 9 7.17 in 2019   | 9 0.31 in 1963         |
| 10 79.8 in 2013        | 10 74.0 in 2011        | 10 6.77 in 1917  | 10 0.35 in 1940        |
| 79.8 in 2007           | 74.0 in 1956           |                  | 11 0.37 in 1979        |
| 79.8 in 2005           | 74.0 in 1954           |                  | <b>12 0.44 in 2023</b> |
| ...                    | ...                    |                  |                        |
| <b>45 77.5 in 2023</b> | <b>62 77.5 in 2023</b> |                  |                        |
| 77.5 in 2012           | 77.5 in 2012           |                  |                        |
| 77.5 in 1945           | 77.5 in 1945           |                  |                        |
| 77.5 in 1935           | 77.5 in 1935           |                  |                        |

Normal Temperature for October at SPG = 77.8°  
Normal Rainfall for October at SPG = 2.16 inches

-----  
**PLANT CITY** (records began in September 1892):

| Warmest Octobers       | Coolest Octobers       | Wettest Octobers | Driest Octobers        |
|------------------------|------------------------|------------------|------------------------|
| 1 81.2 in 2019         | 1 69.8 in 1940         | 1 10.43 in 1959  | 1 0.04 in 2000         |
| 2 80.8 in 2020         | 2 70.0 in 1930         | 2 9.01 in 1938   | 2 0.09 in 1940         |
| 3 79.9 in 2018         | 3 70.2 in 1943         | 3 8.05 in 1924   | 3 0.10 in 2010         |
| 4 79.1 in 2021         | 70.2 in 1929           | 4 7.32 in 2019   | 4 0.14 in 1963         |
| 5 78.9 in 1959         | 5 70.6 in 2000         | 5 7.18 in 1917   | 5 0.16 in 1979         |
| 6 78.8 in 1985         | 70.6 in 1987           | 6 6.86 in 1975   | 6 0.21 in 1907         |
| 7 78.5 in 1918         | 70.6 in 1938           | 7 6.66 in 1952   | 7 0.26 in 2018         |
| 8 78.0 in 2007         | 8 71.1 in 1913         | 8 6.43 in 1898   | 8 0.28 in 1988         |
| 78.0 in 1941           | 9 71.2 in 1909         | 9 6.32 in 1969   | 9 0.29 in 1961         |
| 10 77.9 in 2002        | 10 71.3 in 1944        | 10 5.62 in 1986  | 10 0.33 in 2022        |
|                        | 71.3 in 1942           |                  | ...                    |
| ...                    | ...                    |                  | <b>24 0.94 in 2023</b> |
| <b>25 76.2 in 2023</b> | <b>85 76.2 in 2023</b> |                  | 0.94 in 1908           |
| 76.2 in 1998           | 76.2 in 1998           |                  |                        |
| 76.2 in 1983           | 76.2 in 1983           |                  |                        |
| 76.2 in 1970           | 76.2 in 1970           |                  |                        |

Normal Temperature for October at PLCF1 = 76.7°  
Normal Rainfall for October at PLCF1 = 2.58 inches

**LAKELAND AREA** (records began in January 1915):

| Warmest Octobers       | Coolest Octobers       | Wettest Octobers       | Driest Octobers        |
|------------------------|------------------------|------------------------|------------------------|
| 1 80.4 in 2019         | 1 70.9 in 1976         | 1 9.19 in 2005         | 1 0.00 in 2010         |
| 2 80.1 in 2020         | 2 71.0 in 1943         | 2 7.73 in 1922         | 2 0.04 in 1974         |
| 3 79.9 in 1985         | 3 71.2 in 1964         | 3 6.93 in 1917         | 3 0.11 in 1973         |
| 4 79.3 in 2018         | 4 71.8 in 1974         | 4 6.72 in 1952         | 4 0.16 in 2000         |
| 5 78.8 in 1941         | 71.8 in 1957           | 5 6.63 in 1959         | 5 0.18 in 1940         |
| 78.8 in 1919           | 71.8 in 1938           | 6 6.50 in 2011         | 6 0.19 in 1935         |
| 7 78.6 in 2009         | 7 71.9 in 1930         | 7 6.29 in 1938         | 7 0.23 in 1978         |
| 78.6 in 1959           | 8 72.0 in 1924         | 8 6.23 in 1982         | 8 0.25 in 1942         |
| 9 78.5 in 2007         | 9 72.1 in 1952         | 9 6.19 in 2019         | 9 0.29 in 1926         |
| 10 78.4 in 2021        | 10 72.2 in 1967        | 10 6.00 in 2007        | 10 0.33 in 1963        |
| ...                    | 72.2 in 1953           | ...                    | ...                    |
| ...                    | 72.2 in 1944           | <b>46 2.53 in 2023</b> | <b>63 2.53 in 2023</b> |
| <b>35 76.0 in 2023</b> | ...                    |                        |                        |
| 76.0 in 1975           | <b>70 76.0 in 2023</b> |                        |                        |
| 76.0 in 1970           | 76.0 in 1975           |                        |                        |
| 76.0 in 1951           | 76.0 in 1970           |                        |                        |
|                        | 76.0 in 1951           |                        |                        |

Normal Temperature for October at LLDF1 = 76.4°

Normal Rainfall for October at LLDF1 = 3.04 inches

-----

**WINTER HAVEN AREA** (records began in March 1941):

| Warmest Octobers       | Coolest Octobers       | Wettest Octobers | Driest Octobers        |
|------------------------|------------------------|------------------|------------------------|
| 1 82.2 in 2019         | 1 70.9 in 1987         | 1 9.43 in 1952   | 1 0.02 in 2010         |
| 2 80.7 in 2020         | 2 71.7 in 1977         | 2 9.42 in 1959   | 2 0.16 in 2000         |
| 3 80.4 in 2018         | 3 72.2 in 1976         | 3 8.00 in 2011   | 3 0.17 in 2004         |
| 4 79.3 in 1971         | 72.2 in 1943           | 4 7.60 in 1950   | 4 0.19 in 1998         |
| 5 79.2 in 2021         | 5 72.6 in 2011         | 5 7.15 in 1956   | 5 0.43 in 2009         |
| 6 79.0 in 1985         | 72.6 in 1974           | 6 6.90 in 1944   | 0.43 in 1974           |
| 7 78.9 in 2007         | 7 73.0 in 1958         | 7 6.77 in 1995   | 7 0.46 in 1963         |
| 78.9 in 1959           | 73.0 in 1957           | 8 6.47 in 2005   | 8 0.55 in 1989         |
| 9 78.7 in 2002         | 9 73.1 in 2000         | 9 6.13 in 2002   | 9 0.61 in 2015         |
| 10 78.5 in 1995        | 73.1 in 1944           | 10 5.66 in 1969  | 0.61 in 1942           |
| ...                    | ...                    |                  | 11 0.63 in 1979        |
| <b>36 75.7 in 2023</b> | <b>34 75.7 in 2023</b> |                  | 12 0.64 in 2018        |
| 75.7 in 1990           | 75.7 in 1990           |                  | 13 0.74 in 1973        |
| 75.7 in 1981           | 75.7 in 1981           |                  | 14 0.78 in 1967        |
|                        |                        |                  | <b>15 0.81 in 2023</b> |

Normal Temperature for October at GIF = 77.1°

Normal Rainfall for October at GIF = 2.22 inches



**BARTOW** (records began in June 1892):

| Warmest Octobers       | Coolest Octobers       | Wettest Octobers       | Driest Octobers        |
|------------------------|------------------------|------------------------|------------------------|
| 1 79.8 in 2013         | 1 70.6 in 1913         | 1 12.55 in 1910        | 1 0.00 in 2000         |
| 2 79.6 in 2019         | 2 71.2 in 1894         | 2 10.22 in 1924        | 2 0.13 in 1940         |
| 3 79.3 in 1919         | 3 71.3 in 1940         | 3 9.10 in 1959         | 3 0.20 in 2013         |
| 4 79.1 in 2007         | 71.3 in 1892           | 4 8.98 in 1952         | 0.20 in 1963           |
| 5 79.0 in 2020         | 5 71.4 in 1977         | 5 8.75 in 2011         | 5 0.23 in 1998         |
| 6 78.9 in 1959         | 6 71.5 in 1976         | 6 8.43 in 1917         | 6 0.30 in 2010         |
| 7 78.8 in 2002         | 7 71.7 in 1929         | 7 8.18 in 1922         | 7 0.31 in 1974         |
| 8 78.4 in 1911         | 8 71.9 in 2011         | 8 7.90 in 1894         | 8 0.34 in 1973         |
| 9 78.3 in 2018         | 9 72.0 in 1895         | 9 7.40 in 1938         | 9 0.36 in 1901         |
| 78.3 in 2009           | 10 72.1 in 1924        | 10 7.26 in 1950        | 10 0.37 in 1942        |
| 78.3 in 1902           | 72.1 in 1920           | ...                    | ...                    |
| ...                    | ...                    | <b>66 2.25 in 2023</b> | <b>65 2.25 in 2023</b> |
| <b>67 74.8 in 2023</b> | <b>53 74.8 in 2023</b> | 2.25 in 2012           | 2.25 in 2012           |
| 74.8 in 1899           | 74.8 in 1899           |                        |                        |

Normal Temperature for October at BARF1 = 75.5°

Normal Rainfall for October at BARF1 = 3.03 inches

-----

**SARASOTA-BRADENTON AREA** (records began in January 1911):

| Warmest Octobers       | Coolest Octobers | Wettest Octobers | Driest Octobers        |
|------------------------|------------------|------------------|------------------------|
| 1 82.7 in 2019         | 1 70.6 in 1976   | 1 12.50 in 1952  | 1 0.00 in 1942         |
| 2 81.2 in 2020         | 2 71.0 in 1943   | 2 12.02 in 1922  | 2 Trace in 2010        |
| 3 80.4 in 2007         | 3 71.2 in 1940   | 3 10.48 in 1938  | 3 0.02 in 1963         |
| 4 79.5 in 1959         | 4 71.4 in 1913   | 4 7.31 in 1918   | 4 0.04 in 1973         |
| 5 79.2 in 2016         | 5 71.5 in 1977   | 5 7.23 in 1957   | 5 0.10 in 2000         |
| 79.2 in 1919           | 6 71.6 in 1987   | 6 7.22 in 1924   | 0.10 in 1940           |
| 7 79.0 in 2021         | 7 71.7 in 1930   | 7 7.21 in 1921   | 7 0.31 in 1920         |
| 8 78.9 in 2018         | 8 71.8 in 1938   | 8 7.11 in 1990   | 8 0.44 in 1974         |
| 78.9 in 1985           | 71.8 in 1929     | 9 7.09 in 1993   | 9 0.45 in 1984         |
| 10 78.5 in 1941        | 10 72.0 in 1944  | 10 6.74 in 2007  | 10 0.53 in 1979        |
| ...                    | ...              | ...              | ...                    |
| <b>18 77.8 in 2023</b> |                  |                  | <b>18 0.70 in 2023</b> |

Normal Temperature for October at SRQ = 77.3°

Normal Rainfall for October at SRQ = 2.76 inches



**VENICE** (records began in May 1955):

| Warmest Octobers       | Coolest Octobers | Wettest Octobers | Driest Octobers        |
|------------------------|------------------|------------------|------------------------|
| 1 81.5 in 2019         | 1 70.8 in 1987   | 1 12.83 in 1995  | 1 0.00 in 2010         |
| 2 80.4 in 2009         | 2 71.4 in 1976   | 2 9.90 in 2005   | 2 0.08 in 1981         |
| 3 79.5 in 2021         | 3 72.1 in 1974   | 3 9.61 in 1959   | 3 0.09 in 1963         |
| 79.5 in 2002           | 4 72.2 in 1977   | 4 8.48 in 1982   | 4 0.18 in 2000         |
| 5 79.2 in 2018         | 5 73.0 in 1968   | 5 7.78 in 1986   | 5 0.20 in 1974         |
| 79.2 in 1959           | 6 73.3 in 1957   | 6 7.73 in 1967   | 6 0.36 in 1998         |
| 7 79.0 in 2020         | 7 73.6 in 2008   | 7 7.45 in 1993   | 7 0.56 in 1970         |
| 79.0 in 2012           | 73.6 in 2000     | 8 6.65 in 1983   | 8 0.69 in 2022         |
| 79.0 in 1985           | 9 74.1 in 1964   | 9 6.39 in 1969   | 9 0.72 in 2003         |
| 10 78.9 in 1998        | 10 74.4 in 1967  | 10 6.21 in 1958  | 10 0.73 in 1973        |
| ...                    |                  |                  | 11 0.74 in 1961        |
| <b>16 77.6 in 2023</b> |                  |                  | 12 0.75 in 1988        |
| 77.6 in 2015           |                  |                  | <b>13 0.76 in 2023</b> |
| 77.6 in 1994           |                  |                  |                        |

Normal Temperature for October at VNCF1 = 76.6°

Normal Rainfall for October at VNCF1 = 3.35 inches

-----

**MYAKKA RIVER STATE PARK** (Temperature records began in March 1956  
and Rainfall records began in Sep 1943):

| Warmest Octobers | Coolest Octobers | Wettest Octobers | Driest Octobers |
|------------------|------------------|------------------|-----------------|
| 1 80.9 in 2019   | 1 71.5 in 1987   | 1 10.01 in 1951  | 1 0.00 in 2010  |
| 2 79.9 in 2007   | 2 72.0 in 1992   | 2 9.32 in 1952   | 0.00 in 1974    |
| 3 79.5 in 2018   | 3 72.5 in 1977   | 3 8.59 in 1995   | 3 0.10 in 2000  |
| 79.5 in 1985     | 72.5 in 1957     | 4 7.70 in 1959   | 4 0.30 in 1963  |
| 5 79.0 in 1991   | 5 72.6 in 1976   | 5 6.98 in 2019   | 5 0.44 in 1973  |
| 6 78.9 in 2020   | 6 72.8 in 1963   | 6 6.81 in 1999   | 6 0.61 in 1978  |
| 78.9 in 1998     | 7 73.2 in 1974   | 7 6.65 in 2005   | 0.61 in 1977    |
| 8 78.1 in 1975   | 8 73.5 in 1958   | 8 6.54 in 1994   | 8 0.85 in 1962  |
| 9 78.0 in 1959   | 9 73.6 in 1962   | 9 6.40 in 1943   | 9 1.01 in 1955  |
| 10 77.9 in 1990  | 10 73.7 in 2011  | 10 6.29 in 1957  | 10 1.03 in 1980 |
| 77.9 in 1983     |                  |                  |                 |

Average Temperature for October 2023 = Not Available Yet

Normal Temperature for October at MKCF1 = 76.3

Total Rainfall for October 2023 = Not Available Yet

Normal Rainfall for October at MKCF1 = 3.19 inches

-----

**WAUCHULA 2 N** (records began in January 1933):

| Warmest Octobers       | Coolest Octobers       | Wettest Octobers | Driest Octobers        |
|------------------------|------------------------|------------------|------------------------|
| 1 80.8 in 2007         | 1 70.6 in 1943         | 1 10.36 in 1975  | 1 0.00 in 2000         |
| 2 79.8 in 2009         | 2 71.2 in 2011         | 2 9.67 in 1952   | 2 Trace in 1940        |
| 3 79.4 in 1985         | 3 71.4 in 2000         | 3 9.38 in 1938   | 3 0.10 in 1974         |
| 4 79.3 in 2019         | 4 71.8 in 1987         | 4 8.64 in 1995   | 4 0.22 in 1981         |
| 79.3 in 1941           | 71.8 in 1944           | 5 8.27 in 2011   | 5 0.27 in 1963         |
| 6 78.8 in 2020         | 6 71.9 in 2010         | 6 6.85 in 1950   | 6 0.36 in 1984         |
| 78.8 in 1959           | 7 72.0 in 1954         | 7 6.21 in 1953   | 7 0.45 in 1979         |
| 8 78.3 in 1936         | 8 72.2 in 1977         | 8 5.61 in 1999   | 8 0.53 in 2006         |
| 9 78.0 in 2018         | 72.2 in 1953           | 9 5.55 in 2005   | 9 0.57 in 2021         |
| 10 77.7 in 1939        | 10 72.4 in 1964        | 5.55 in 1945     | 0.57 in 1961           |
| ...                    | ...                    |                  | ...                    |
| <b>45 75.3 in 2023</b> | <b>40 75.3 in 2023</b> |                  | <b>17 0.89 in 2023</b> |
| 75.3 in 1973           | 75.3 in 1973           |                  |                        |

Normal Temperature for October at WAUF1 = 75.3

Normal Rainfall for October at WAUF1 = 3.09 inches

-----

**ARCHBOLD BIO STN** (records began in January 1969):

| Warmest Octobers       | Coolest Octobers       | Wettest Octobers      | Driest Octobers |
|------------------------|------------------------|-----------------------|-----------------|
| 1 79.3 in 2019         | 1 71.9 in 1977         | 1 9.24 in 2005        | 1 0.00 in 2010  |
| 2 79.0 in 2020         | 2 72.0 in 1987         | 2 8.40 in 1969        | 2 0.13 in 1984  |
| 79.0 in 2007           | 72.0 in 1976           | 3 7.19 in 2017        | 3 0.25 in 2003  |
| 4 77.9 in 1995         | 4 72.4 in 2011         | 4 7.15 in 1995        | 4 0.40 in 1980  |
| 77.9 in 1985           | 5 72.5 in 2010         | 5 6.95 in 1993        | 5 0.47 in 2009  |
| 6 77.8 in 2018         | 72.5 in 2000           | 6 6.89 in 2011        | 6 0.53 in 1990  |
| 7 77.0 in 2016         | 72.5 in 1992           | 7 6.63 in 1987        | 7 0.56 in 1974  |
| 8 76.8 in 2015         | 8 72.6 in 1988         | 8 <b>5.34 in 2023</b> | 8 0.68 in 1997  |
| 9 76.7 in 2009         | 9 72.7 in 2008         | 9 5.18 in 1983        | 9 0.69 in 2022  |
| 76.7 in 2002           | 10 72.9 in 1997        | 10 4.68 in 2001       | 10 0.76 in 2018 |
| 76.7 in 1975           |                        |                       |                 |
| ...                    | ...                    |                       |                 |
| <b>25 75.5 in 2023</b> | <b>31 75.5 in 2023</b> |                       |                 |

Normal Temperature for October at ACHF1 = 75.7°

Normal Rainfall for October at ACHF1 = 3.41 inches

**PUNTA GORDA AREA** (records began in May 1914):

| Warmest Octobers       | Coolest Octobers | Wettest Octobers       | Driest Octobers        |
|------------------------|------------------|------------------------|------------------------|
| 1 80.9 in 2020         | 1 72.9 in 1976   | 1 13.99 in 1924        | 1 0.00 in 1942         |
| 2 80.6 in 2019         | 2 73.0 in 1938   | 2 12.21 in 1959        | 2 Trace in 1940        |
| 80.6 in 1949           | 3 73.1 in 1987   | 3 11.60 in 1952        | 3 0.01 in 2010         |
| 4 80.4 in 1951         | 73.1 in 1940     | 4 10.88 in 1995        | 4 0.10 in 1981         |
| 5 80.3 in 1959         | 5 73.3 in 1974   | 5 10.03 in 1951        | 5 0.16 in 1973         |
| 6 80.1 in 2018         | 73.3 in 1930     | 6 9.64 in 1945         | 6 0.26 in 1961         |
| 7 80.0 in 1985         | 7 73.4 in 1929   | 7 9.18 in 1922         | 7 0.33 in 2022         |
| 8 79.9 in 2007         | 8 73.5 in 2000   | 8 8.86 in 1996         | 8 0.45 in 2003         |
| 9 79.8 in 1919         | 73.5 in 1977     | 9 8.20 in 1953         | 9 0.56 in 1974         |
| 10 79.6 in 1960        | 10 73.7 in 1917  | 10 8.05 in 1932        | 10 0.63 in 1979        |
| ...                    |                  | ...                    | ...                    |
| <b>21 78.1 in 2023</b> |                  | <b>52 2.78 in 2023</b> | <b>55 2.78 in 2023</b> |

Normal Temperature for October at PGD = 77.2°  
Normal Rainfall for October at PGD = 3.02 inches

-----

**FORT MYERS AREA** (records began in January 1902):

| Warmest Octobers       | Coolest Octobers       | Wettest Octobers       | Driest Octobers       |
|------------------------|------------------------|------------------------|-----------------------|
| 1 82.9 in 2019         | 1 72.5 in 1903         | 1 19.70 in 1924        | 1 0.05 in 1963        |
| 2 81.7 in 1985         | 2 72.6 in 1976         | 2 12.04 in 1959        | 2 0.16 in 1973        |
| 3 81.2 in 2021         | 3 73.3 in 1913         | 3 11.91 in 1951        | 3 0.19 in 1974        |
| 4 81.1 in 2007         | 4 73.5 in 1953         | 4 11.08 in 1922        | 4 0.30 in 1935        |
| 5 80.4 in 2020         | 5 73.6 in 1957         | 5 11.03 in 1969        | 5 0.39 in 1979        |
| 80.4 in 1919           | 73.6 in 1908           | 6 10.80 in 1921        | 6 0.40 in 1988        |
| 7 80.0 in 1995         | 7 73.7 in 1943         | 7 10.73 in 2011        | 0.40 in 1981          |
| 80.0 in 1959           | 8 74.0 in 1977         | 8 9.26 in 1910         | 8 0.43 in 1977        |
| 9 79.8 in 1981         | 74.0 in 1920           | 9 8.34 in 1952         | 9 0.45 in 2010        |
| 10 79.5 in 2018        | 10 74.1 in 1940        | 10 8.17 in 2005        | 10 0.50 in 1942       |
|                        | 74.1 in 1910           | ...                    | ...                   |
| ...                    | ...                    | <b>80 1.90 in 2023</b> | <b>43 1.90 in 203</b> |
| <b>27 78.5 in 2023</b> | <b>95 78.5 in 2023</b> |                        |                       |
| 78.5 in 2023           | 78.5 in 2023           |                        |                       |

Normal Temperature for October at FMY = 78.0°  
Normal Rainfall for October at FMY = 3.08 inches

-----

For more Climate information, visit our web page at the following link:  
<https://www.weather.gov/tampabay> and then go to the Climate and Past Weather drop down menu above the graphical forecast images.