



# NOAA - National Weather Service

Tampa Bay Area

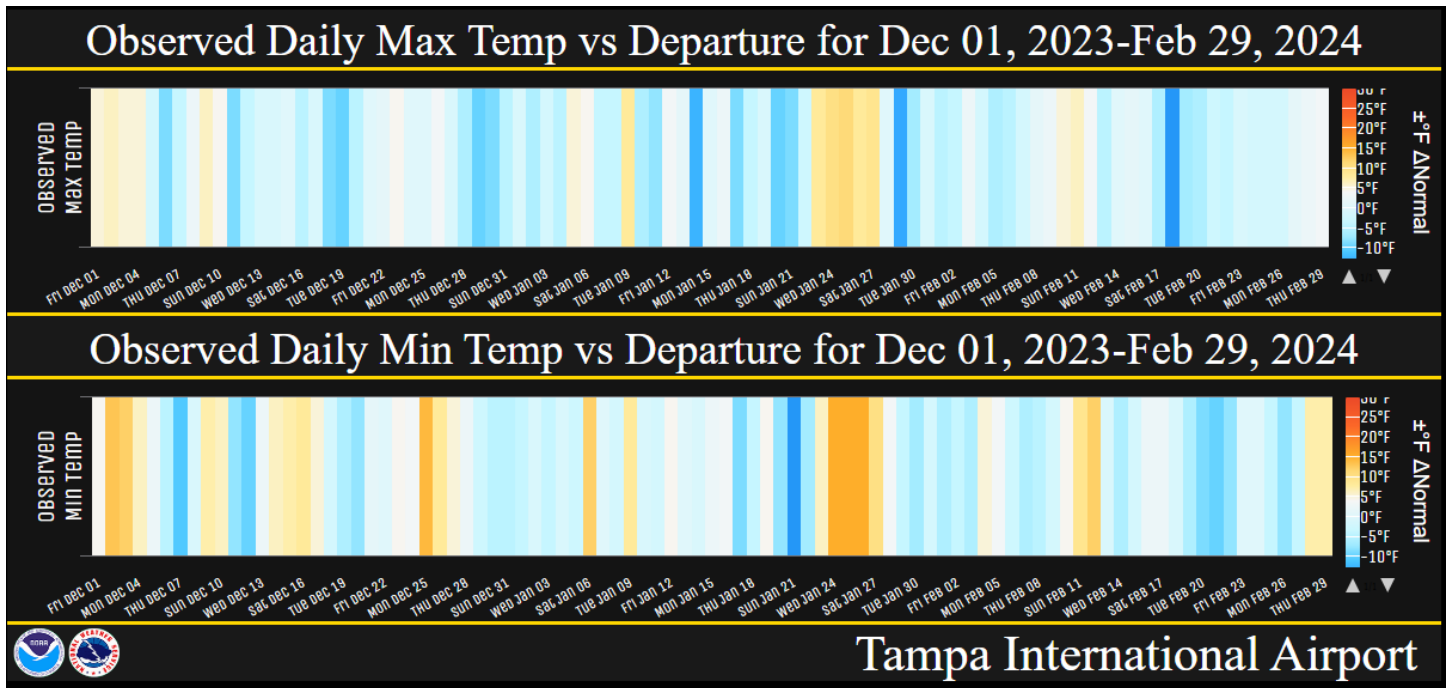
2525 14th Avenue SE, Ruskin, Florida 33570

813-645-2323 <https://weather.gov/tampabay>

## February 2024 and Winter 2023-24 Climate Summary

The ENSO (El Niño Southern Oscillation) switched from the La Niña of the last 3 winter to El Niño this winter, and potential could end up being one of the top five strongest since 1950. El Niño usually means that we'll see overall temperatures near to slightly below normal for the season while rainfall will be above normal. This overall pattern was accurate for most of West Central and Southwest Florida. We saw some large swings in the temperatures during the winter with some rather chilly days where temperatures were 10 to 15 degrees below normal while others were 10 to 15 degrees above normal. This February the temperatures ended up near normal to over 2 degrees below normal while the winter (Dec/Jan/Feb) was from about 2 degrees below normal to about 1 degree above normal.

The various ups and downs in the temperatures this past winter can be seen in the observed daily maximum and minimum temperatures for Tampa in the graphic below. The orange areas are the days with well above normal temperatures while the blue are days with well below normal temperatures.



Below are temperature tables for February and the Winter (Dec/Jan/Feb) at sites available at this time.

**FEBRUARY TEMPERATURE RANKINGS (°F)**

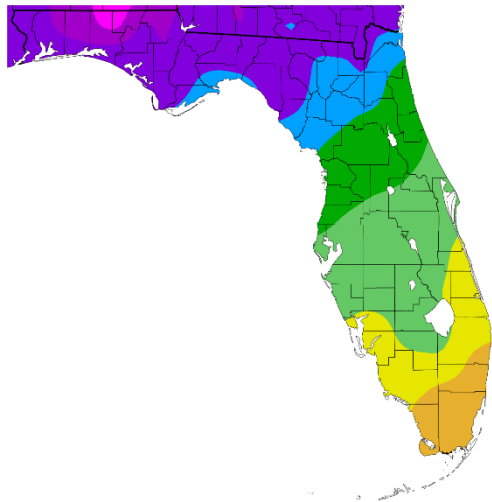
Location	February 2024		Normal Feb Temp	Dep fm Normal	Records Began
	Rank	Avg Temp			
Fort Myers Area	58th Coolest (tie)	65.6°	67.3°	-1.7°	Jan 1902
Punta Gorda Area	55th Coolest	65.3°	65.5°	-0.2°	Jul 1914
St Petersburg Area	46th Coolest	63.8°	64.9°	-1.1°	Aug 1914
Lakeland Area	51st Coolest	63.4°	65.0°	-1.6°	Jan 1915
Sarasota-Bradenton Area	55th Coolest (tie)	63.4°	64.8°	-1.4°	Jan 1911
Tampa Area	73rd Coolest (tie)	63.3°	64.7°	-1.4°	Apr 1890
Venice	28th Coolest	63.2°	64.6°	-1.4°	May 1955
Winter Haven Area	34th Coolest (tie)	63.2°	65.1°	-1.9°	Mar 1941
Plant City	63rd Coolest (tie)	63.0°	65.3°	-2.3°	Sep 1892
Bartow	37th Coolest (tie)	62.6°	64.0°	-1.4°	Jun 1892
St. Leo	55th Coolest (tie)	61.7°	62.6°	-0.9°	Apr 1895
Archbold Bio Stn	23rd Coolest	61.6°	64.2°	-2.6°	Jan 1969
Wauchula 2 N	29th Coolest	61.3°	62.9°	-1.6°	Jan 1933
Myakka River State Pk	11th Coolest	61.1°	65.0°	-3.9°	Mar 1956
Brooksville Area	38th Coolest (tie)	59.8°	60.6°	-0.8°	Jan 1892
Inverness 3 SE	26th Coolest	58.7°	58.9°	-0.2°	Jul 1948
Chiefland 5 ESE	24th Coolest	57.5°	58.5°	-1.0°	Jul 1956

**WINTER (DEC/JAN/FEB) TEMPERATURE RANKINGS (°F) :**

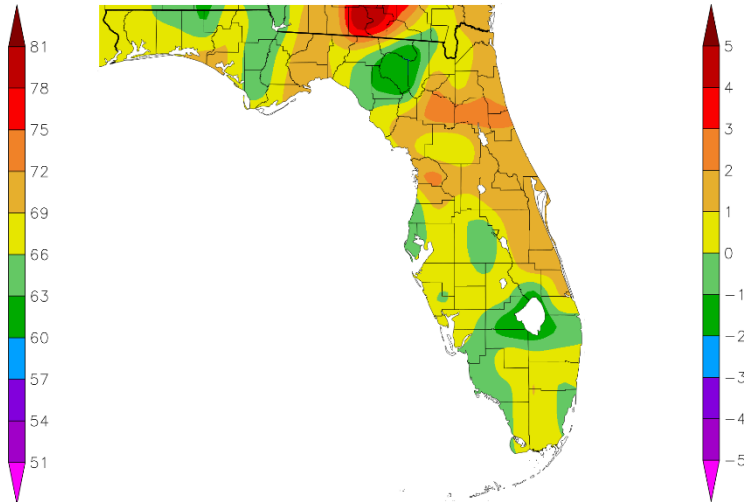
Location	Winter 2023-24		Normal Temp	Dep fm Normal	Records Began
	Rank	Avg Temp			
Fort Myers Area	76th Coolest	66.2°	66.4°	-0.2°	Jan 1902
Punta Gorda Area	41st Warmest (tie)	65.7°	64.8°	+0.9°	Jul 1914
Sarasota-Bradenton Area	33rd Warmest (tie)	64.3°	64.1°	+0.2°	Jan 1911
Venice	24th Warmest (tie)	64.0°	63.8°	+0.2°	May 1955
Lakeland Area	63rd Coolest	63.7°	64.0°	-0.3°	Jan 1915
Plant City	74th Coolest (tie)	63.4°	64.2°	-0.8°	Sep 1892
Tampa Area	90th Coolest (tie)	63.3°	63.9°	-0.6°	Apr 1890
St Petersburg Area	35th Coolest (tie)	63.2°	64.1°	-0.9°	Aug 1914
Winter Haven Area	27th Coolest	62.9°	64.0°	-1.1°	Mar 1941
Archbold Bio Stn	28th Coolest (tie)	62.7°	63.4°	-0.7°	Jan 1969
Bartow	35th Coolest	62.5°	63.0°	-0.5°	Jun 1892
Myakka River State Pk	13th Coolest (tie)	61.9°	64.0°	-2.1°	Mar 1956
Wauchula 2 N	23rd Coolest (tie)	61.9°	62.0°	-0.1°	Jan 1933
St. Leo	53rd Coolest (tie)	61.4°	61.5°	-0.1°	Apr 1895
Brooksville Area	58th Warmest (tie)	60.3°	59.5°	+0.8°	Jan 1892
Inverness 3 SE	27th Warmest	59.3°	58.0°	+1.3°	Jul 1948
Chiefland 5 ESE	26th Coolest	56.8°	57.1°	-0.3°	Jul 1956

Below are graphics that depict the monthly/season average temperature and departure from normal temperature (based on the 1991-2020 Normals) across the area.

Temperature (F)  
12/1/2023 - 12/31/2023

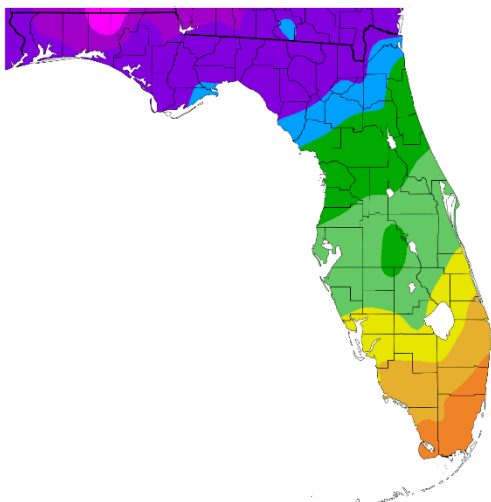


Departure from Normal Temperature (F)  
12/1/2023 - 12/31/2023

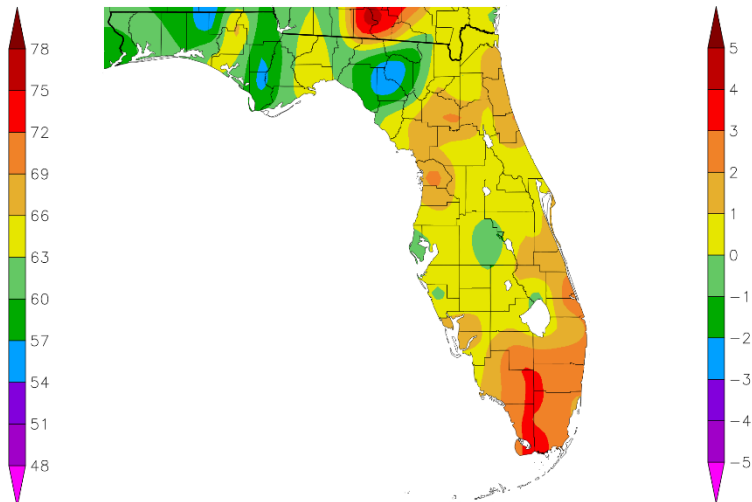


**December 2023**

Temperature (F)  
1/1/2024 - 1/31/2024



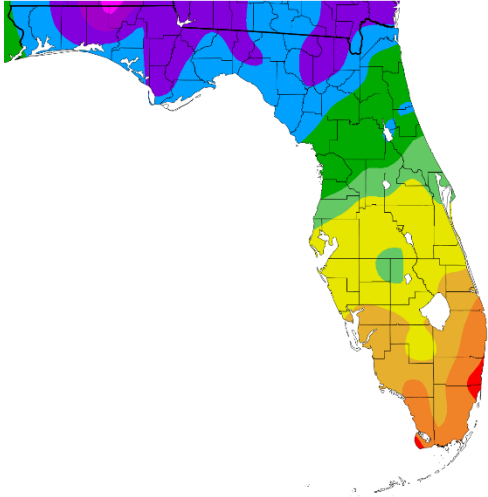
Departure from Normal Temperature (F)  
1/1/2024 - 1/31/2024



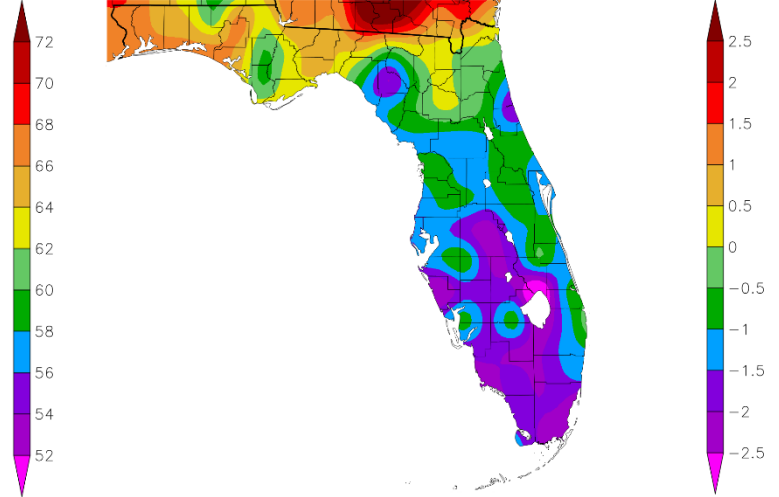
**January 2024**

Graphics Source: High Plains Regional Climate Center (HPRCC)

Temperature (F)  
2/1/2024 - 2/29/2024

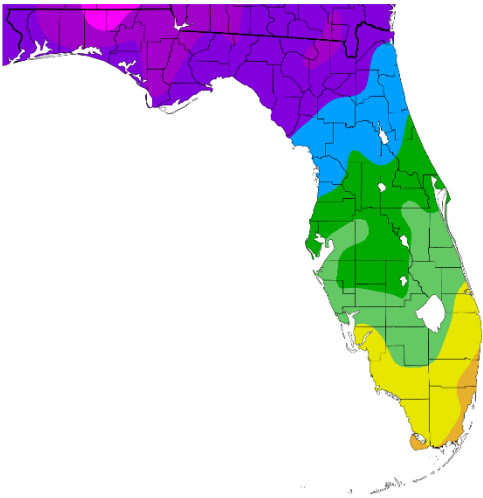


Departure from Normal Temperature (F)  
2/1/2024 - 2/29/2024

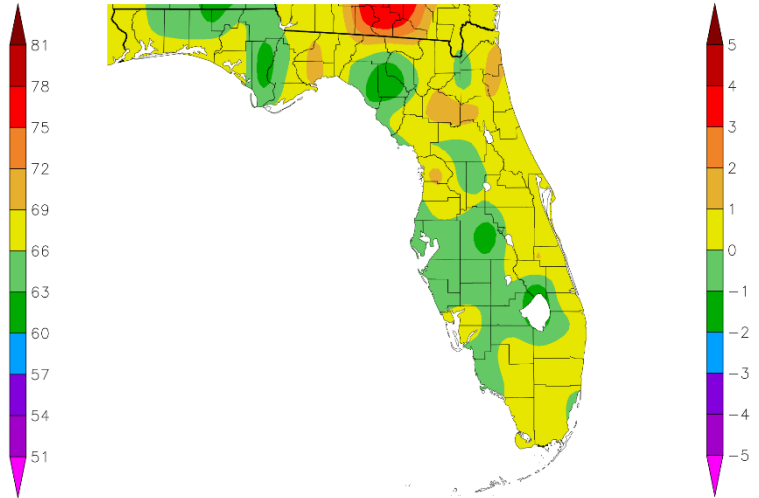


**February 2024**

Temperature (F)  
12/1/2023 - 2/29/2024



Departure from Normal Temperature (F)  
12/1/2023 - 2/29/2024



**Winter (Dec/Jan/Feb) 2023-24**

Graphics Source: High Plains Regional Climate Center (HPRCC)

As for rainfall during February, many areas near the coast were above normal while the interior was below normal. Meanwhile, for the Winter 2023-2024 we saw near normal to well above normal rainfall.

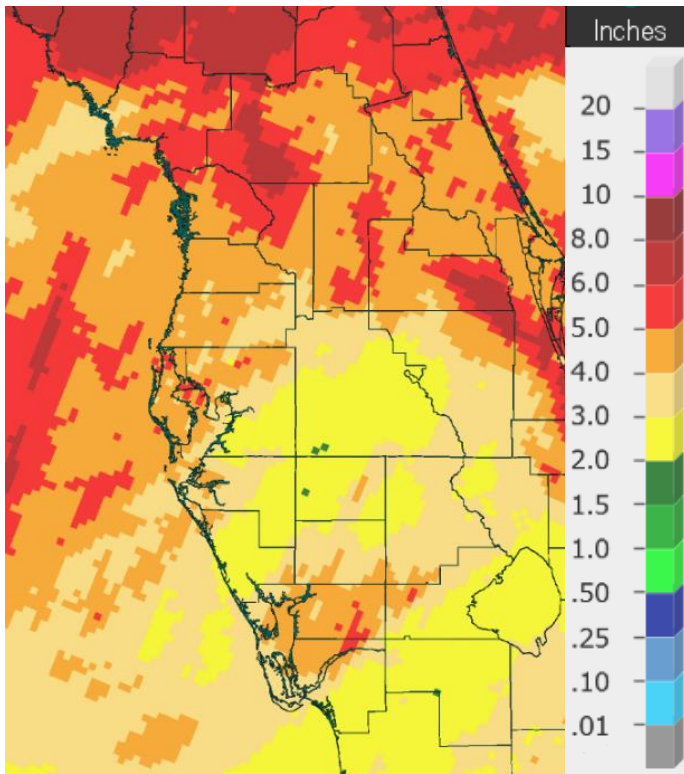
**FEBRUARY RAINFALL (inches):**

Location	February 2024 Rank	Rain Total	Normal Feb Rain	Dep fm Normal	Records Began
Brooksville Area	40th Wettest	3.69	2.57	+1.12	Jan 1892
Inverness 3 SE	22nd Wettest	3.61	2.69	+0.92	Jul 1948
St. Leo	44th Wettest	3.45	2.38	+1.07	Apr 1895
Tampa Area	46th Wettest (tie)	3.32	2.62	+0.70	Apr 1890
Sarasota-Bradenton Area	37th Wettest	3.26	1.92	+1.34	Jan 1911
Myakka River State Pk	26th Wettest	3.10	2.44	+0.66	Sep 1943
St. Petersburg Area	37th Wettest	2.99	2.02	+0.97	Aug 1914
Venice	23rd Wettest	2.91	2.00	+0.91	May 1955
Lakeland Area	42nd Wettest	2.78	2.33	+0.45	Jan 1915
Chiefland 5 ESE	30th Driest	2.76	3.25	-0.49	Jul 1956
Fort Myers Area	38th Wettest	2.61	1.78	+0.83	Jan 1902
Plant City	61st Wettest	2.58	2.33	+0.25	Sep 1892
Archbold Bio Stn	19th Wettest (tie)	2.38	2.25	+0.13	Jan 1969
Punta Gorda Area	67th Driest	2.37	2.47	-0.10	May 1914
Bartow	64th Driest	2.09	2.10	-0.01	Jun 1892
Wauchula 2 N	41st Driest	2.00	2.18	-0.18	Jan 1933
Winter Haven Area	41st Driest	1.97	2.44	-0.47	Mar 1941

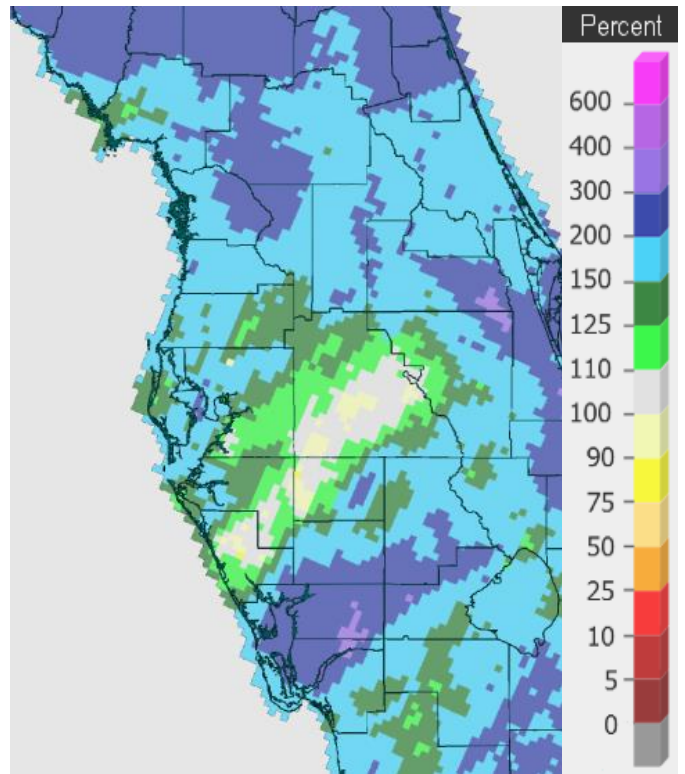
**WINTER (DEC/JAN/FEB) RAINFALL (inches):**

Location	Winter 2023-24 Rank	Rain Total	Normal Rain	Dep fm Normal	Records Began
Chiefland 5 ESE	12th Wettest	14.72	10.11	+4.61	Jul 1956
Inverness 3 SE	10th Wettest	12.35	8.14	+4.21	Jul 1948
Fort Myers Area	7th Wettest	11.65	6.11	+5.54	Jan 1902
Sarasota-Bradenton Area	15th Wettest	11.19	7.04	+4.15	Jan 1911
Venice	10th Wettest	11.18	6.99	+4.19	May 1955
Tampa Area	20th Wettest	11.03	7.83	+3.20	Apr 1890
Punta Gorda Area	12th Wettest	10.81	6.78	+4.03	May 1914
St. Petersburg Area	22nd Wettest	10.58	6.93	+3.65	Aug 1914
Myakka River State Pk	16th Wettest	10.40	7.80	+2.60	Sep 1943
Brooksville Area	37th Wettest (tie)	10.22	8.14	+2.08	Jan 1892
St. Leo	42nd Wettest (tie)	9.66	7.97	+1.69	Apr 1895
Archbold Bio Stn	11th Wettest	8.93	6.46	+2.47	Jan 1969
Lakeland Area	32nd Wettest	8.71	7.93	+0.78	Jan 1915
Bartow	40th Wettest (tie)	8.60	6.92	+1.68	Jun 1892
Plant City	43rd Wettest	8.60	7.87	+0.73	Sep 1892
Winter Haven Area	48th Driest	7.57	7.61	-0.04	Mar 1941
Wauchula 2 N	30th Wettest	7.22	6.60	+0.62	Jan 1933

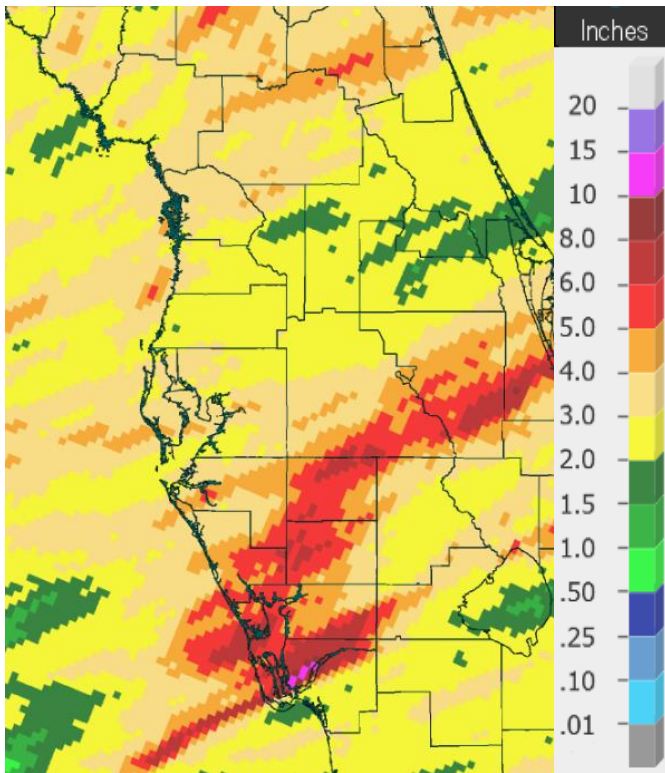
On the following pages are graphics that depict the monthly/season total rainfall and percent of normal rainfall (based on the 1991-2020 Normals).



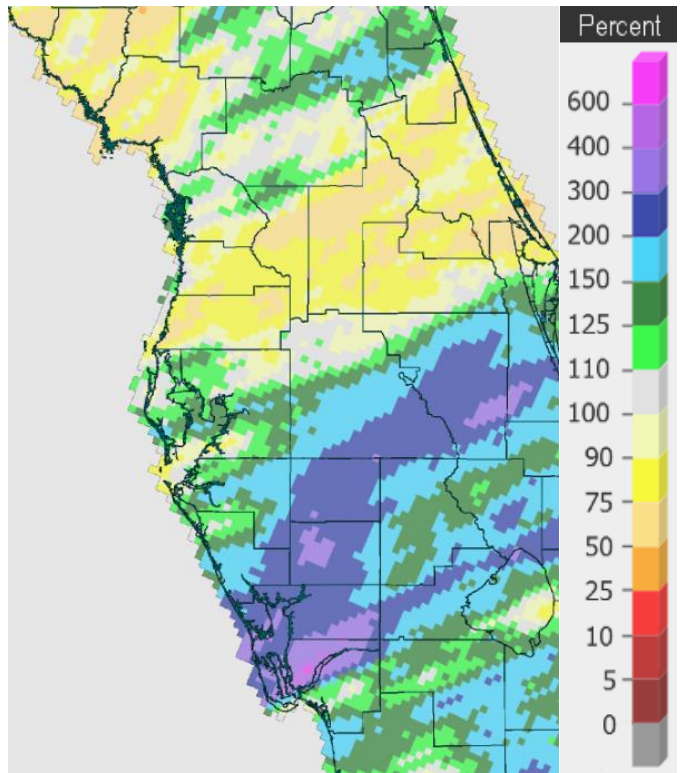
**Rainfall December 2023**



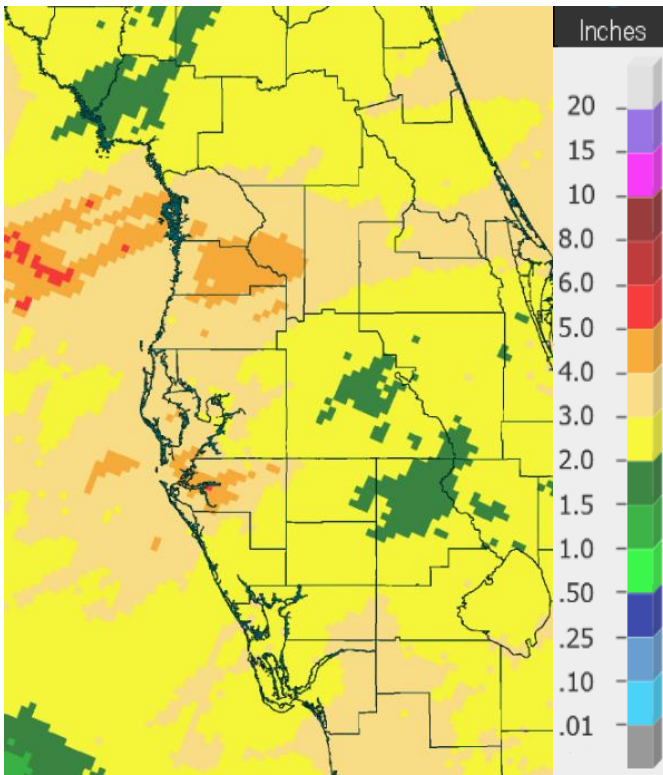
**Percent of Normal**



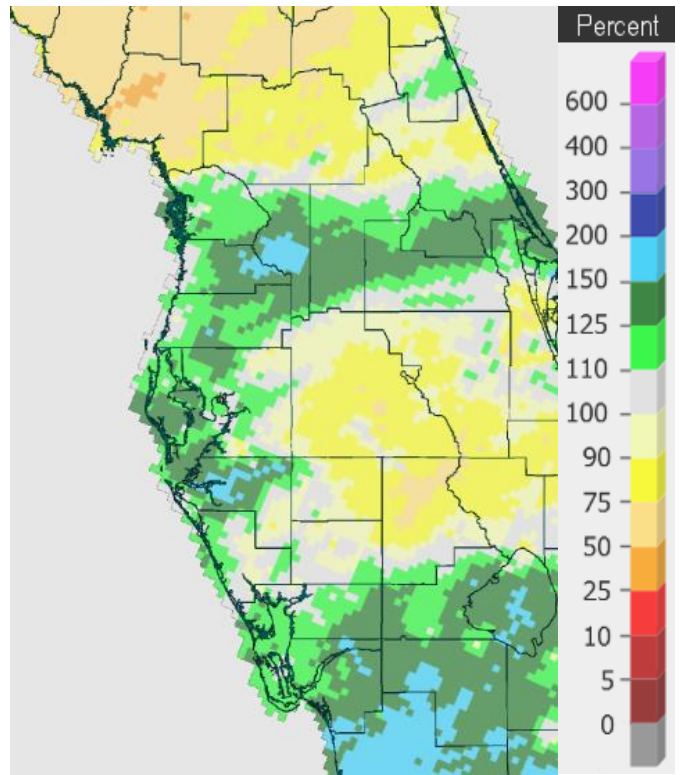
**Rainfall January 2024**



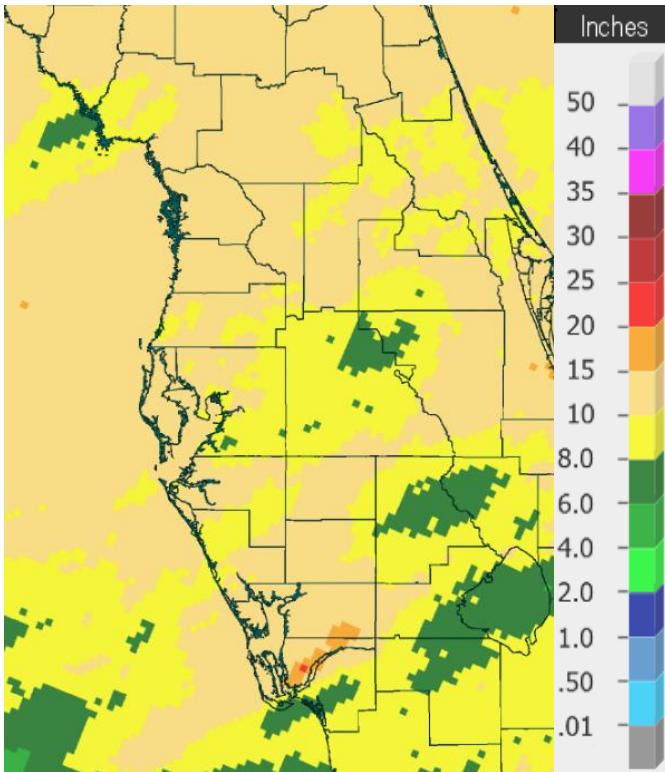
**Percent of Normal**



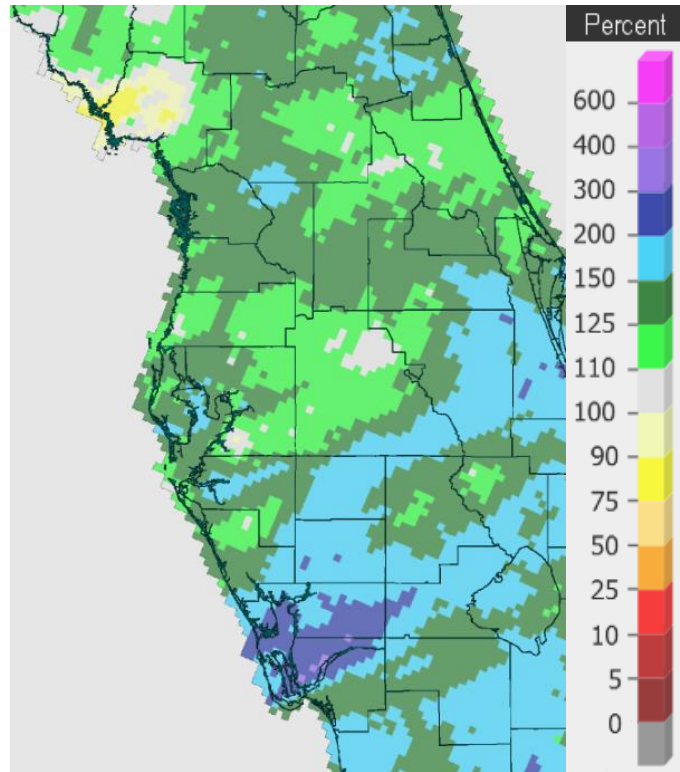
**Rainfall February 2024**



**Percent of Normal**



**Rainfall Winter 2023-24**



**Percent of Normal**

Below are tables of the Top Ten Warmest, Coolest, Wettest, and Driest Februaries and Winters (December/January/February) at some official NWS locations, which include the average/total for this month/season where available, and the 1991-2020 Normal (average) temperature and rainfall.

**CHIEFLAND 5 ESE** (records began in July 1956):

Warmest Februaries		Coolest Februaries		Wettest Februaries		Driest Februaries	
1	68.8 in 2018	1	48.4 in 1958	1	15.20 in 1998	1	0.12 in 1962
2	65.3 in 2019	2	49.3 in 2010	2	9.06 in 2004	2	0.72 in 1994
3	64.7 in 2023		49.3 in 1968	3	8.73 in 1970	3	0.77 in 1980
4	64.2 in 1990	4	50.0 in 1978	4	7.75 in 1964	4	0.78 in 1989
5	64.1 in 1959	5	52.3 in 1963	5	7.42 in 1966	5	0.82 in 1997
6	64.0 in 2017	6	52.4 in 1964	6	7.05 in 1965	6	0.98 in 2022
	64.0 in 1982	7	53.0 in 1969	7	6.55 in 1993		0.98 in 1996
8	63.3 in 1975	8	53.1 in 1980	8	6.26 in 1967	8	1.01 in 1991
	63.3 in 1957	9	53.3 in 1977	9	6.10 in 1963	9	1.06 in 2000
10	63.1 in 2001	10	53.5 in 2009	10	6.01 in 1978	10	1.21 in 2017
...		...		...		...	
<b>38</b>	<b>57.5 in 2024</b>	<b>24</b>	<b>57.5 in 2024</b>	<b>35</b>	<b>2.76 in 2024</b>	<b>30</b>	<b>2.76 in 2024</b>

Normal Temperature for February at CHIF1 = 58.5°

Normal Rainfall for February at CHIF1 = 3.25 in.

-----

Warmest Winters		Coolest Winters		Wettest Winters		Driest Winters	
1	62.0 in 1956-57	1	50.8 in 1957-58	1	30.55 in 1997-98	1	2.18 in 1956-57
2	61.7 in 1971-72	2	51.7 in 1977-78	2	26.40 in 1963-64	2	3.82 in 2021-22
3	61.5 in 1998-99		51.7 in 1963-64	3	20.46 in 1969-70	3	3.86 in 2000-01
4	61.1 in 1990-91	4	52.0 in 1976-77	4	19.65 in 1964-65	4	4.21 in 1961-62
5	60.9 in 2019-20	5	52.1 in 2009-10	5	17.59 in 1977-78	5	5.19 in 2016-17
6	60.8 in 1973-74	6	52.7 in 2010-11	6	17.58 in 1978-79		5.19 in 1980-81
7	60.5 in 2022-23		52.7 in 1980-81	7	16.42 in 1965-66	7	5.26 in 2011-12
8	60.2 in 2017-18	8	52.9 in 1969-70	8	16.37 in 2018-19	8	5.42 in 2004-05
	60.2 in 1974-75	9	53.2 in 1968-69	9	16.27 in 2005-06	9	5.49 in 1984-85
10	59.6 in 1988-89	10	53.7 in 2002-03	10	15.89 in 2013-14	10	5.75 in 2022-23
	59.6 in 1964-65		53.7 in 1962-63	11	15.15 in 1983-84		
...		...		<b>12</b>	<b>14.72 in 2023-24</b>		
<b>33</b>	<b>56.8 in 2023-24</b>	<b>26</b>	<b>56.8 in 2023-24</b>				

Normal Temperature for Winter (Dec/Jan/Feb) at CHIF1 = 57.1°

Normal Rainfall for Winter (Dec/Jan/Feb) at CHIF1 = 10.11 in.



**INVERNESS 3 SE** (records began in July 1948):

Warmest Februarys		Coolest Februarys		Wettest Februarys		Driest Februarys	
1	69.4 in 1949	1	49.7 in 2010	1	10.21 in 1952	1	0.46 in 1999
2	68.9 in 2018	2	50.6 in 1978	2	6.62 in 1998	2	0.52 in 1985
3	68.1 in 1959	3	51.1 in 1958	3	6.45 in 1960	3	0.58 in 1976
4	66.9 in 1957	4	54.0 in 1977	4	6.25 in 1983	4	0.73 in 1950
5	66.1 in 2019	5	54.3 in 1980	5	6.16 in 1978	5	0.75 in 1989
6	65.9 in 1956	6	54.7 in 1968	6	5.64 in 2006	6	0.82 in 2009
7	65.8 in 2023	7	54.8 in 1988	7	5.56 in 1971	7	0.95 in 1949
	65.8 in 1982	8	54.9 in 2015	8	5.43 in 1964	8	0.99 in 2022
9	65.7 in 1975	9	55.1 in 2009	9	5.35 in 2003		0.99 in 2005
10	64.9 in 1990	10	55.3 in 2006	10	5.34 in 1970		0.99 in 1995
			55.3 in 1979	...			0.99 in 1956
			55.3 in 1973	<b>22</b>	<b>3.61 in 2024</b>		
...		...					
<b>43</b>	<b>58.7 in 2024</b>	<b>26</b>	<b>58.7 in 2024</b>				

Normal Temperature for February at INVF1 = 58.9°

Normal Rainfall for February at INVF1 = 2.69 in.

---

Warmest Winters		Coolest Winters		Wettest Winters		Driest Winters	
1	67.0 in 1948-49	1	52.5 in 2002-03	1	22.52 in 1997-98	1	1.98 in 1949-50
2	66.0 in 1949-50	2	53.1 in 1977-78	2	17.06 in 1977-78	2	2.49 in 2004-05
3	65.3 in 1956-57		53.1 in 1976-77	3	16.66 in 2018-19	3	2.59 in 1984-85
4	64.1 in 2016-17	4	53.2 in 2009-10	4	14.69 in 1969-70	4	2.98 in 2012-13
5	63.0 in 1971-72	5	53.5 in 1957-58	5	14.46 in 1963-64	5	3.20 in 1956-57
6	62.5 in 1951-52	6	54.1 in 2010-11	6	14.06 in 2002-03	6	3.52 in 1948-49
7	62.3 in 1974-75	7	55.6 in 1987-88	7	13.93 in 1951-52	7	3.56 in 2021-22
	62.3 in 1964-65	8	55.9 in 1995-96	8	12.79 in 1978-79	8	3.81 in 1975-76
9	62.2 in 1973-74	9	56.1 in 1963-64	9	12.70 in 1993-94	9	3.90 in 2011-12
	62.2 in 1953-54	10	56.3 in 2005-06	<b>10</b>	<b>12.35 in 2023-24</b>	10	4.02 in 1955-56
...		...					
<b>27</b>	<b>59.3 in 2023-24</b>	<b>31</b>	<b>59.3 in 2023-24</b>				

Normal Temperature for Winter (Dec/Jan/Feb) at INVF1 = 58.0°

Normal Rainfall for Winter (Dec/Jan/Feb) at INVF1 = 8.14 in.

---

**BROOKSVILLE AREA** (records began in January 1892):

Warmest Februarys	Coolest Februarys	Wettest Februarys	Driest Februarys
1 70.6 in 2018	1 50.4 in 2010	1 10.15 in 1998	1 0.10 in 1911
2 69.9 in 1927	2 52.1 in 1895	2 9.59 in 1952	2 0.11 in 2017
3 69.1 in 1932	3 52.8 in 1902	3 8.84 in 1899	3 0.14 in 2000
4 69.0 in 1949	4 52.9 in 1978	4 8.72 in 2004	4 0.48 in 2023
5 68.8 in 1944	5 54.8 in 1947	5 7.37 in 1936	5 0.50 in 1948
6 68.6 in 2019	54.8 in 1920	6 7.19 in 1983	6 0.52 in 1938
68.6 in 1939	7 55.2 in 1901	7 7.04 in 1903	7 0.53 in 2009
8 68.4 in 1918	8 55.9 in 2009	8 6.83 in 1971	0.53 in 1939
9 68.1 in 1959	9 56.0 in 1963	9 6.78 in 1981	9 0.54 in 1999
10 66.9 in 1975	56.0 in 1942	10 6.52 in 1946	10 0.57 in 2001
66.9 in 1945			0.57 in 1943
...	...	...	...
<b>78 59.8 in 2024</b>	<b>38 59.8 in 2024</b>	<b>40 3.69 in 2024</b>	<b>90 3.69 in 2024</b>
59.8 in 2005	59.8 in 2005		
59.8 in 1931	59.8 in 1931		

Normal Temperature for February at BKV = 60.6°

Normal Rainfall for February at BKV = 2.57 in.

-----

Warmest Winters	Coolest Winters	Wettest Winters	Driest Winters
1 68.2 in 1931-32	1 53.8 in 1901-02	1 22.83 in 1997-98	1 1.09 in 1910-11
2 67.5 in 1948-49	2 54.0 in 2009-10	2 17.83 in 1898-99	2 1.57 in 1906-07
3 66.9 in 1949-50	3 54.5 in 2010-11	3 17.22 in 1935-36	3 1.89 in 2011-12
4 66.1 in 1926-27	4 55.0 in 2002-03	4 16.98 in 1911-12	4 2.44 in 1949-50
5 65.8 in 1912-13	5 55.7 in 1976-77	5 16.44 in 1969-70	5 2.63 in 1938-39
6 65.4 in 1936-37	6 56.2 in 1969-70	6 16.21 in 1902-03	6 2.81 in 1999-00
65.4 in 1932-33	7 56.4 in 2003-04	7 15.51 in 1963-64	7 2.87 in 2008-09
8 65.2 in 1971-72	8 56.7 in 1963-64	8 14.93 in 1913-14	8 3.02 in 1908-09
9 64.3 in 1973-74	9 56.8 in 1939-40	9 14.80 in 2003-04	9 3.26 in 1942-43
10 64.1 in 1974-75	56.8 in 1894-95	10 14.79 in 1977-78	10 3.43 in 1984-85
...	...	...	...
<b>58 60.3 in 2023-24</b>	<b>46 60.3 in 2023-24</b>	<b>37 10.22 in 2023-24</b>	
60.3 in 1923-24	60.3 in 1923-24	10.22 in 1995-96	

Normal Temperature for Winter (Dec/Jan/Feb) at BKV = 59.5°

Normal Rainfall for Winter (Dec/Jan/Feb) at BKV = 8.14 in.

-----

**ST LEO** (records began in April 1895):

Warmest Februarys	Coolest Februarys	Wettest Februarys	Driest Februarys
1 71.2 in 2018	1 52.7 in 1958	1 11.04 in 1998	1 0.01 in 1911
2 70.2 in 1932	2 53.3 in 2010	2 9.71 in 1899	2 0.14 in 1999
3 69.5 in 1949	3 53.9 in 1978	3 9.48 in 1983	3 0.24 in 2023
4 69.4 in 2019	4 54.4 in 1947	4 8.69 in 1937	4 0.25 in 1950
5 69.1 in 1982	5 54.9 in 1968	5 8.09 in 1936	5 0.32 in 1945
6 69.0 in 1990	6 55.9 in 1912	6 7.22 in 1915	6 0.40 in 1989
7 68.9 in 1959	7 56.0 in 1942	7 6.92 in 1897	7 0.42 in 1948
8 68.7 in 1939	8 56.5 in 1902	8 6.35 in 1971	8 0.44 in 1916
9 68.2 in 1944	9 56.7 in 1964	6.35 in 1952	9 0.48 in 1938
10 68.1 in 1962	10 57.1 in 1970	10 6.31 in 1963	10 0.51 in 1922
...	57.1 in 1941	...	...
...	57.1 in 1920	<b>44 3.45 in 2024</b>	<b>86 3.45 in 2024</b>
<b>71 61.7 in 2024</b>	...		
61.7 in 1907	<b>55 61.7 in 2024</b>		
	61.7 in 1907		

Normal Temperature for February at STLF1 = 62.6°  
 Normal Rainfall for February at STLF1 = 2.38 in.

-----

Warmest Winters	Coolest Winters	Wettest Winters	Driest Winters
1 68.7 in 1931-32	1 54.7 in 1930-31	1 28.97 in 1997-98	1 1.56 in 1906-07
2 68.0 in 1948-49	2 55.5 in 1957-58	2 23.03 in 1898-99	2 1.72 in 1910-11
3 66.6 in 1949-50	3 56.3 in 1977-78	3 18.02 in 1981-82	3 2.07 in 1949-50
4 66.4 in 1936-37	4 56.4 in 1939-40	4 17.89 in 2002-03	4 2.23 in 1938-39
5 66.1 in 1956-57	5 56.5 in 2009-10	5 16.87 in 1969-70	5 2.62 in 2011-12
6 65.8 in 1971-72	56.5 in 1976-77	6 16.34 in 1935-36	6 2.71 in 1975-76
7 65.7 in 1912-13	7 56.9 in 1969-70	7 15.61 in 1913-14	7 2.81 in 1937-38
8 65.5 in 1998-99	8 57.1 in 2010-11	8 14.90 in 1940-41	8 2.93 in 2021-22
9 65.2 in 2007-08	9 57.3 in 1927-28	9 14.55 in 1902-03	9 3.48 in 1915-16
10 65.1 in 2016-17	10 57.5 in 1935-36	10 14.40 in 1977-78	10 3.54 in 2016-17
65.1 in 1990-91...			
...	...	<b>42 9.66 in 2023-24</b>	<b>86 9.66 in 2023-24</b>
<b>67 61.4 in 2023-24</b>	<b>53 61.4 in 2023-24</b>	9.66 in 1907-08	9.66 in 1907-08
61.4 in 2005-06	61.4 in 2005-06		
61.4 in 2000-01	61.4 in 2000-01		
61.4 in 1929-30	61.4 in 1929-30		

Normal Temperature for Winter (Dec/Jan/Feb) at STLF1 = 61.5°  
 Normal Rainfall for Winter (Dec/Jan/Feb) at STLF1 = 7.97 in.

-----

**TARPON SPRINGS** (records began in January 1892):

Warmest Februarys	Coolest Februarys	Wettest Februarys	Driest Februarys
1 71.2 in 2018	1 51.8 in 1958	1 10.91 in 1998	1 0.06 in 1911
2 70.7 in 1932	2 52.0 in 1895	2 9.79 in 1899	2 0.17 in 2009
3 69.6 in 2019	3 53.0 in 1978	3 8.90 in 1936	3 0.26 in 1918
69.6 in 1949	4 54.6 in 2010	4 8.56 in 1937	4 0.32 in 1999
5 69.3 in 1990	5 55.0 in 1968	5 8.45 in 1983	5 0.38 in 1997
6 68.9 in 1944	6 55.2 in 1902	6 7.36 in 1971	6 0.40 in 1950
68.9 in 1939	7 55.4 in 1964	7 6.52 in 1903	7 0.41 in 1989
8 68.7 in 1927	55.4 in 1947	8 6.49 in 1963	8 0.44 in 1945
9 68.6 in 1997	9 55.5 in 1980	9 6.31 in 2004	9 0.52 in 1938
10 68.1 in 1982	10 55.7 in 1963	10 6.24 in 1970	10 0.59 in 1944

Average Temperature for February 2024 = A Few Days Unrepresentative  
 Normal Temperature for February at TRPF1 = 62.9°

Total Rainfall for February 2024 = A Couple Days Missing  
 Normal Rainfall for February at TRPF1 = 2.51 in.

-----

Warmest Winters	Coolest Winters	Wettest Winters	Driest Winters
1 70.5 in 1931-32	1 54.2 in 1957-58	1 29.65 in 1997-98	1 0.97 in 1949-50
2 67.3 in 1949-50	2 55.1 in 1963-64	2 20.41 in 1935-36	2 2.06 in 1910-11
3 66.0 in 1932-33	3 55.8 in 1977-78	3 19.40 in 1898-99	3 2.08 in 1938-39
4 65.9 in 2016-17	4 56.3 in 1980-81	4 18.08 in 1969-70	4 2.14 in 1906-07
5 65.6 in 1990-91	5 56.5 in 1962-63	5 17.47 in 1983-84	5 2.37 in 2000-01
6 65.5 in 1936-37	56.5 in 1939-40	6 17.41 in 2002-03	6 2.67 in 2008-09
7 65.3 in 2019-20	7 56.6 in 2010-11	7 16.44 in 2018-19	7 3.02 in 1975-76
65.3 in 1996-97	56.6 in 1901-02	8 15.17 in 1902-03	8 3.11 in 1934-35
65.3 in 1926-27	9 56.8 in 2009-10	9 14.89 in 1963-64	9 3.41 in 2021-22
65.3 in 1912-13	56.8 in 1976-77	10 14.33 in 1985-86	10 3.54 in 1968-69
	56.8 in 1969-70		

Average Temp for Winter 2023-24 (Dec/Jan/Feb) = Several Days Unrepresentative  
 Normal Temperature for Winter (Dec/Jan/Feb) at TRPF1 = 61.8°

Total Rainfall for Winter 2023-24 (Dec/Jan/Feb) = A Couple Days Missing  
 Normal Rainfall for Winter (Dec/Jan/Feb) at TRPF1 = 8.28 in.

-----

**TAMPA AREA** (records began in April 1890):

Warmest Februarys	Coolest Februarys	Wettest Februarys	Driest Februarys
1 74.2 in 2018	1 52.9 in 1958	1 10.92 in 1937	1 0.05 in 1911
2 70.9 in 2019	2 53.2 in 1978	2 10.82 in 1998	2 0.08 in 1918
3 70.8 in 1932	3 54.3 in 1968	3 9.09 in 2006	3 0.21 in 1950
4 70.3 in 2023	4 54.8 in 1947	4 7.95 in 1963	4 0.25 in 1932
5 70.1 in 1949	54.8 in 1895	5 7.43 in 1936	5 0.29 in 1999
6 69.1 in 1990	6 55.0 in 2010	6 7.35 in 1983	6 0.30 in 2000
69.1 in 1891	7 55.8 in 1969	7 6.55 in 2015	7 0.34 in 1949
8 68.9 in 1959	8 56.2 in 1912	8 6.27 in 1899	8 0.41 in 1991
68.9 in 1927	56.2 in 1902	9 6.06 in 1903	0.41 in 1989
10 68.8 in 2017	10 56.6 in 1980	10 5.98 in 1919	10 0.43 in 1994
...	...	...	...
<b>61 63.3 in 2024</b>	<b>73 63.3 in 2024</b>	<b>46 3.32 in 2024</b>	<b>86 3.32 in 2024</b>
63.3 in 2003	63.3 in 2003	3.32 in 1984	3.32 in 1984

Normal Temperature for February at TPA = 64.7°  
 Normal Rainfall for February at TPA = 2.62 in.

-----

Warmest Winters	Coolest Winters	Wettest Winters	Driest Winters
1 70.3 in 1931-32	1 55.2 in 1957-58	1 31.03 in 1997-98	1 0.51 in 1949-50
2 68.4 in 2016-17	2 55.7 in 1977-78	2 17.11 in 2002-03	2 1.41 in 1906-07
68.4 in 1948-49	3 56.0 in 1976-77	3 15.81 in 2018-19	3 1.71 in 1931-32
4 67.6 in 2021-22	4 56.2 in 1980-81	4 15.59 in 1898-99	4 1.76 in 1975-76
5 67.0 in 1949-50	5 56.5 in 1969-70	5 14.86 in 1936-37	5 1.86 in 1910-11
6 66.8 in 2017-18	6 56.8 in 1963-64	6 14.53 in 1914-15	6 2.15 in 1948-49
7 66.7 in 1936-37	7 57.2 in 1939-40	7 13.78 in 1902-03	7 2.54 in 1938-39
8 66.5 in 2019-20	8 57.3 in 1968-69	8 13.77 in 1941-42	8 2.67 in 2021-22
9 66.4 in 2022-23	9 57.4 in 1901-02	9 13.74 in 1935-36	9 2.76 in 1943-44
10 66.1 in 2011-12	10 57.7 in 2009-10	10 12.76 in 1963-64	10 2.85 in 1934-35
66.1 in 1912-13		...	
...	...	<b>20 11.03 in 2023-24</b>	
<b>44 63.3 in 2023-24</b>	<b>90 63.3 in 2023-24</b>		
63.3 in 2020-21	63.3 in 2020-21		

Normal Temperature for Winter (Dec/Jan/Feb) at TPA = 63.9°  
 Normal Rainfall for Winter (Dec/Jan/Feb) at TPA = 7.83 in.

-----

**ST PETERSBURG – ALBERT WHITTED** (records began in August 1914):

Warmest Februarys		Coolest Februarys		Wettest Februarys		Driest Februarys	
1	72.6 in 2018	1	55.7 in 1978	1	12.71 in 1998	1	0.12 in 1918
2	72.3 in 1932	2	55.9 in 2010	2	10.93 in 1937	2	0.18 in 2001
3	71.1 in 1949	3	57.3 in 1964	3	9.06 in 1983	3	0.19 in 2023
4	70.4 in 2023		57.3 in 1947	4	8.26 in 1963	4	0.24 in 1976
5	70.1 in 2019	5	58.3 in 1940	5	7.96 in 1936	5	0.25 in 1999
6	70.0 in 1959	6	58.8 in 1963	6	6.69 in 1946	6	0.29 in 2012
7	69.9 in 1927	7	58.9 in 1980	7	6.37 in 1972	7	0.34 in 1949
8	69.6 in 1957	8	59.0 in 1968	8	5.97 in 1964	8	0.43 in 1989
9	69.4 in 1944	9	59.3 in 1941	9	5.67 in 1958	9	0.44 in 1944
10	69.3 in 1982	10	59.5 in 1977	10	5.57 in 1919	10	0.45 in 1950
	69.3 in 1939		59.5 in 1942	...		...	
...		...		<b>37</b>	<b>2.99 in 2024</b>	<b>72</b>	<b>2.99 in 2024</b>
<b>62</b>	<b>63.8 in 2024</b>	<b>46</b>	<b>63.8 in 2024</b>				

Normal Temperature for February at SPG = 64.9°

Normal Rainfall for February at SPG = 2.02 in.

-----

Warmest Winters		Coolest Winters		Wettest Winters		Driest Winters	
1	72.1 in 1931-32	1	58.1 in 1939-40	1	32.36 in 1997-98	1	0.59 in 1949-50
2	69.4 in 1948-49	2	58.2 in 1963-64	2	20.23 in 2002-03	2	1.49 in 2016-17
3	68.3 in 1971-72	3	58.5 in 2009-10	3	17.14 in 1963-64	3	1.51 in 2000-01
4	68.1 in 1936-37		58.5 in 1976-77	4	16.95 in 1914-15	4	1.54 in 1975-76
5	67.8 in 1949-50	5	58.7 in 1977-78	5	15.15 in 1935-36	5	1.92 in 2011-12
6	67.7 in 2016-17	6	59.2 in 1980-81	6	13.63 in 1947-48	6	2.06 in 1938-39
	67.7 in 2012-13	7	59.3 in 1962-63	7	13.50 in 1969-70	7	2.11 in 1955-56
8	67.6 in 1956-57	8	59.8 in 1969-70	8	13.37 in 1936-37	8	2.21 in 1934-35
9	67.5 in 1932-33	9	60.1 in 1930-31	9	13.14 in 1957-58	9	2.23 in 2021-22
10	67.1 in 2021-22	10	60.5 in 2002-03	10	12.64 in 1945-46	10	2.35 in 1948-49
	67.1 in 1926-27			...			
...		...		<b>22</b>	<b>10.58 in 2023-24</b>		
<b>61</b>	<b>63.2 in 2023-24</b>	<b>35</b>	<b>63.2 in 2023-24</b>				
	63.2 in 2014-15		63.2 in 2014-15				
	63.2 in 1940-41		63.2 in 1940-41				
	63.2 in 1919-20		63.2 in 1919-20				

Normal Temperature for Winter (Dec/Jan/Feb) at SPG = 64.1°

Normal Rainfall for Winter (Dec/Jan/Feb) at SPG = 6.93 in.

-----

**PLANT CITY** (records began in September 1892):

Warmest Februarys	Coolest Februarys	Wettest Februarys	Driest Februarys
1 73.2 in 2018	1 54.6 in 1958	1 9.04 in 1936	1 0.00 in 1911
2 71.9 in 2019	2 54.9 in 2010	2 8.87 in 1899	2 Trace in 1918
3 71.4 in 2023	3 55.9 in 1978	3 8.57 in 1983	3 0.05 in 1989
4 70.6 in 1949	4 56.0 in 1902	4 8.49 in 1998	4 0.09 in 1976
5 70.1 in 1959	5 56.2 in 1947	5 7.97 in 1937	5 0.25 in 1950
6 69.6 in 1918	6 56.7 in 1968	6 7.56 in 1963	6 0.28 in 1932
7 69.0 in 2017	56.7 in 1942	7 6.77 in 1919	7 0.31 in 2000
8 68.9 in 1982	56.7 in 1941	8 6.13 in 1972	8 0.36 in 1945
9 68.8 in 2021	9 56.9 in 1931	9 5.98 in 2015	9 0.37 in 1949
68.8 in 1939	10 57.1 in 1912	10 5.73 in 1992	0.37 in 1944
...	...	...	...
<b>54 63.0 in 2024</b>	<b>63 63.0 in 2024</b>	<b>61 2.58 in 2024</b>	<b>67 2.58 in 2024</b>
63.0 in 2004	63.0 in 2004		
63.0 in 1999	63.0 in 1999		
63.0 in 1946	63.0 in 1946		

Normal Temperature for February at PLCF1 = 65.3°  
 Normal Rainfall for February at PLCF1 = 2.33 in.

-----

Warmest Winters	Coolest Winters	Wettest Winters	Driest Winters
1 68.7 in 1948-49	1 55.2 in 1930-31	1 26.68 in 1997-98	1 1.03 in 1906-07
2 67.3 in 2019-20	2 56.5 in 1935-36	2 17.28 in 1898-99	2 1.06 in 1975-76
3 67.2 in 1971-72	3 56.6 in 1939-40	3 17.16 in 1935-36	3 2.04 in 1910-11
4 67.0 in 2022-23	56.6 in 1901-02	4 16.72 in 2002-03	4 2.15 in 1938-39
5 66.8 in 1956-57	5 56.7 in 1957-58	5 14.99 in 2018-19	5 2.19 in 1908-09
6 66.2 in 1949-50	6 57.2 in 1980-81	6 14.70 in 1914-15	6 2.39 in 2011-12
7 66.1 in 2012-13	7 57.5 in 1976-77	7 14.27 in 1905-06	7 2.68 in 1917-18
8 66.0 in 2018-19	8 57.9 in 2009-10	8 14.09 in 1978-79	8 2.75 in 1942-43
9 65.8 in 2015-16	9 58.2 in 1963-64	9 13.94 in 1963-64	9 2.89 in 1904-05
10 65.7 in 2021-22	10 58.3 in 1969-70	10 13.57 in 1925-26	10 3.19 in 1948-49
...	58.3 in 1895-96	...	...
<b>34 63.4 in 2023-24</b>	<b>74 63.4 in 2023-24</b>	<b>43 8.60 in 2023-24</b>	<b>83 8.60 in 2023-24</b>
63.4 in 1991-92	63.4 in 1991-92		
63.4 in 1989-90	63.4 in 1989-90		
63.4 in 1893-94	63.4 in 1893-94		

Normal Temperature for Winter (Dec/Jan/Feb) at PLCF1 = 64.2°  
 Normal Rainfall for Winter (Dec/Jan/Feb) at PLCF1 = 7.87 in.

**LAKELAND AREA** (records began in January 1915):

Warmest Februarys	Coolest Februarys	Wettest Februarys	Driest Februarys
1 72.8 in 2018	1 52.8 in 1958	1 9.60 in 1983	1 Trace in 1918
2 71.6 in 1932	2 54.7 in 1947	2 8.40 in 1936	2 0.14 in 1989
3 71.1 in 2019	3 55.0 in 1978	3 8.25 in 1998	3 0.17 in 1945
4 70.7 in 2023	4 55.8 in 1968	4 7.21 in 1937	4 0.20 in 1916
5 70.4 in 1918	5 55.9 in 2010	5 6.59 in 1963	5 0.25 in 1932
6 70.1 in 1990	6 56.7 in 1941	6 5.89 in 1915	6 0.26 in 1949
70.1 in 1949	7 56.8 in 1942	7 5.65 in 2015	0.26 in 1935
8 69.8 in 1982	8 57.3 in 1964	8 5.55 in 1919	8 0.27 in 1976
9 69.6 in 1927	57.3 in 1963	9 5.36 in 1972	9 0.46 in 2023
10 69.3 in 1939	10 57.9 in 1973	10 5.11 in 1992	10 0.48 in 1999
...	57.9 in 1970	...	0.48 in 1944
<b>59 63.4 in 2024</b>	<b>51 63.4 in 2024</b>	<b>42 2.78 in 2024</b>	<b>69 2.78 in 2024</b>

Normal Temperature for February at LLDF1 = 65.0°  
 Normal Rainfall for February at LLDF1 = 2.33 in.

-----

Warmest Winters	Coolest Winters	Wettest Winters	Driest Winters
1 70.9 in 1931-32	1 55.2 in 1957-58	1 23.72 in 1997-98	1 1.49 in 1934-35
2 68.1 in 1948-49	2 56.6 in 1976-77	2 19.49 in 2002-03	2 1.64 in 1975-76
3 68.0 in 2016-17	3 56.8 in 1977-78	3 16.60 in 1935-36	3 1.82 in 1938-39
4 66.9 in 1949-50	4 57.1 in 1969-70	4 15.22 in 2018-19	4 2.04 in 1927-28
5 66.7 in 1936-37	5 57.4 in 1963-64	5 12.94 in 1978-79	5 2.10 in 1943-44
66.7 in 1932-33	57.4 in 1939-40	6 12.66 in 1982-83	6 2.21 in 1931-32
7 66.6 in 2022-23	7 58.2 in 1982-83	7 11.97 in 1925-26	7 2.44 in 2021-22
66.6 in 2019-20	58.2 in 1980-81	8 11.96 in 1963-64	8 2.47 in 1948-49
9 66.4 in 1956-57	9 58.6 in 1962-63	9 11.81 in 1965-66	9 2.56 in 2011-12
10 66.3 in 1971-72	10 58.8 in 2009-10	10 11.58 in 1992-93	10 2.71 in 2000-01
...	...	...	...
<b>41 63.7 in 2023-24</b>	<b>63 63.7 in 2023-24</b>	<b>32 8.71 in 2023-24</b>	<b>78 8.71 in 2023-24</b>

Normal Temperature for Winter (Dec/Jan/Feb) at LLDF1 = 64.0°  
 Normal Rainfall for Winter (Dec/Jan/Feb) at LLDF1 = 7.93 in.

-----



**BARTOW** (records began in June 1892):

Warmest Februarys		Coolest Februarys		Wettest Februarys		Driest Februarys	
1	71.6 in 2018	1	54.1 in 1895	1	9.15 in 1998	1	0.00 in 1911
2	71.0 in 1949	2	54.8 in 1958	2	9.12 in 1936	2	0.03 in 1932
3	70.1 in 1959	3	54.9 in 1912	3	8.33 in 1983	3	0.07 in 2001
4	69.7 in 2023	4	56.2 in 1968	4	8.11 in 1963	4	0.14 in 1916
	69.7 in 2014	5	56.3 in 2010	5	7.30 in 1899	5	0.21 in 2000
6	69.6 in 2019	6	56.4 in 1947	6	6.41 in 1937	6	0.24 in 1989
	69.6 in 1990	7	57.8 in 1901	7	6.33 in 1913	7	0.26 in 1945
	69.6 in 1982	8	57.9 in 1980	8	6.23 in 1960	8	0.32 in 2023
9	69.5 in 2001	9	58.0 in 1977	9	6.16 in 1972	9	0.33 in 1950
	69.5 in 1903	10	58.1 in 1964	10	5.76 in 1924	10	0.37 in 2009
...		...		...		...	
<b>55</b>	<b>62.6 in 2024</b>	<b>37</b>	<b>62.6 in 2024</b>	<b>69</b>	<b>2.09 in 2024</b>	<b>64</b>	<b>2.09 in 2024</b>
	62.6 in 1981		62.6 in 1981				
	62.6 in 1974		62.6 in 1974				

Normal Temperature for February at BARF1 = 64.0°

Normal Rainfall for February at BARF1 = 2.10 in.

-----

Warmest Winters		Coolest Winters		Wettest Winters		Driest Winters	
1	68.9 in 1948-49	1	56.7 in 1957-58	1	24.41 in 1997-98	1	1.57 in 1938-39
2	67.5 in 2013-14	2	57.8 in 1909-10	2	19.39 in 2002-03	2	1.65 in 1943-44
3	66.8 in 1949-50	3	58.0 in 1980-81	3	18.87 in 1935-36	3	1.72 in 1934-35
4	66.7 in 2016-17	4	58.5 in 1969-70	4	16.42 in 1983-84	4	1.77 in 2011-12
5	66.3 in 1998-99	5	58.7 in 1963-64	5	16.18 in 1914-15	5	1.83 in 1984-85
	66.3 in 1956-57	6	59.4 in 2010-11	6	16.06 in 1905-06	6	1.89 in 1910-11
7	66.2 in 1971-72	7	59.5 in 1962-63	7	15.37 in 1898-99	7	2.03 in 2000-01
8	65.8 in 1988-89	8	59.7 in 1903-04	8	15.02 in 1925-26	8	2.15 in 1915-16
	65.8 in 1974-75	9	59.8 in 1911-12	9	13.59 in 1957-58	9	2.16 in 1949-50
	65.8 in 1912-13	10	59.9 in 1968-69	10	13.23 in 1965-66	10	2.22 in 1904-05
			59.9 in 1954-55	...		...	
...		...		<b>40</b>	<b>8.60 in 2023-24</b>	<b>88</b>	<b>8.60 in 2023-24</b>
<b>39</b>	<b>62.5 in 2023-24</b>	<b>35</b>	<b>62.5 in 2023-24</b>		8.60 in 1964-65		8.60 in 1964-65

Normal Temperature for Winter (Dec/Jan/Feb) at BARF1 = 63.0°

Normal Rainfall for Winter (Dec/Jan/Feb) at BARF1 = 6.92 in.

**WINTER HAVEN AREA** (records began in March 1941):

Warmest Februarys	Coolest Februarys	Wettest Februarys	Driest Februarys
1 72.8 in 2019	1 54.0 in 1958	1 10.61 in 1998	1 0.20 in 1945
2 72.7 in 2018	2 55.0 in 2010	2 7.82 in 1983	2 0.32 in 1989
3 71.5 in 1949	3 55.5 in 1978	3 6.57 in 1960	3 0.33 in 1944
4 70.1 in 1990	4 56.4 in 1968	4 6.03 in 1963	4 0.41 in 2011
5 70.0 in 1975	5 56.8 in 1969	5 5.86 in 2021	5 0.44 in 1950
6 69.7 in 2023	6 57.0 in 1947	5.86 in 2015	6 0.54 in 2009
7 69.4 in 1982	7 57.9 in 1964	7 5.49 in 1957	7 0.56 in 2000
69.4 in 1959	8 58.5 in 1980	8 5.08 in 2002	8 0.57 in 2023
9 69.0 in 1997	9 58.9 in 1977	9 5.05 in 1972	9 0.58 in 1949
10 68.9 in 1962	10 59.0 in 1963	10 4.73 in 1971	10 0.60 in 1954
...	...	...	...
<b>38 63.2 in 2024</b>	<b>34 63.2 in 2024</b>	<b>41 1.97 in 2024</b>	<b>41 1.97 in 2024</b>
63.2 in 1995	63.2 in 1995		
63.2 in 1987	63.2 in 1987		

Normal Temperature for February at GIF = 65.1°

Normal Rainfall for February at GIF = 2.44 in.

-----

Warmest Winters	Coolest Winters	Wettest Winters	Driest Winters
1 69.4 in 1948-49	1 56.6 in 1957-58	1 24.22 in 1997-98	1 1.75 in 1984-85
2 67.8 in 1949-50	2 56.9 in 1976-77	2 16.55 in 2002-03	2 1.83 in 1943-44
3 67.5 in 1971-72	3 57.7 in 1963-64	3 12.78 in 1965-66	3 2.00 in 2011-12
4 67.4 in 2016-17	4 58.0 in 2009-10	4 12.35 in 1963-64	4 2.28 in 1975-76
67.4 in 1990-91	5 58.1 in 1977-78	5 12.17 in 1957-58	5 2.79 in 1948-49
67.4 in 1988-89	6 58.6 in 1968-69	6 12.10 in 1947-48	6 3.00 in 2012-13
7 66.7 in 2022-23	7 58.7 in 2010-11	7 11.84 in 2018-19	7 3.09 in 2000-01
66.7 in 2019-20	8 59.1 in 1969-70	8 11.75 in 1983-84	8 3.25 in 2021-22
9 66.4 in 1956-57	9 59.6 in 1962-63	9 11.72 in 1978-79	9 3.53 in 2017-18
10 66.3 in 2021-22	10 60.6 in 1975-76	10 10.68 in 1977-78	10 3.54 in 1949-50
...	...	...	...
<b>33 62.9 in 2023-24</b>	<b>27 62.9 in 2023-24</b>	<b>32 7.57 in 2023-24</b>	<b>48 7.57 in 2023-24</b>

Normal Temperature for Winter (Dec/Jan/Feb) at GIF = 64.0°

Normal Rainfall for Winter (Dec/Jan/Feb) at GIF = 7.61 in.

-----

**SARASOTA-BRADENTON AREA** (records began in January 1911):

Warmest Februarys	Coolest Februarys	Wettest Februarys	Driest Februarys
1 71.9 in 2018	1 54.4 in 1958	1 10.16 in 1983	1 Trace in 1911
2 71.1 in 2019	2 54.8 in 1978	2 9.29 in 1963	2 0.05 in 2001
3 70.5 in 1959	3 55.7 in 2010	3 7.34 in 1915	3 0.11 in 1950
4 69.7 in 1949	4 56.3 in 1977	4 7.13 in 1992	4 0.13 in 1989
5 69.4 in 2023	5 57.3 in 1980	5 6.65 in 1936	5 0.15 in 2023
6 69.4 in 1990	6 57.3 in 1912	6 6.04 in 1937	6 0.15 in 1932
7 69.1 in 1932	7 57.7 in 1968	7 5.92 in 1942	7 0.20 in 1918
8 68.4 in 1982	8 58.2 in 1942	8 5.91 in 1998	8 0.21 in 1949
9 68.3 in 1939	9 58.4 in 1969	9 5.80 in 1964	9 0.25 in 1945
10 68.2 in 2012	10 58.5 in 1941	10 5.73 in 1947	10 0.27 in 1944
11 68.2 in 2001	11 58.5 in 1941	11 5.73 in 1947	11 0.27 in 1944
...	...	...	...
<b>55 63.4 in 2024</b>	<b>55 63.4 in 2024</b>	<b>37 3.26 in 2024</b>	<b>78 3.26 in 2024</b>
63.4 in 2004	63.4 in 2004		
63.4 in 1985	63.4 in 1985		

Normal Temperature for February at SRQ = 64.8°

Normal Rainfall for February at SRQ = 1.92 in.

-----

Warmest Winters	Coolest Winters	Wettest Winters	Driest Winters
1 69.1 in 1931-32	1 55.8 in 1976-77	1 28.11 in 1997-98	1 0.14 in 1949-50
2 67.9 in 1949-50	2 56.9 in 1977-78	2 19.08 in 1914-15	2 1.26 in 2000-01
3 67.9 in 1948-49	3 57.1 in 1980-81	3 14.94 in 1935-36	3 1.35 in 1975-76
4 67.3 in 2019-20	4 57.3 in 1957-58	4 14.44 in 2002-03	4 1.69 in 1948-49
5 67.0 in 2016-17	5 57.6 in 1939-40	5 14.38 in 1977-78	5 1.88 in 1931-32
6 66.9 in 1936-37	6 58.0 in 1930-31	6 13.92 in 1913-14	6 1.90 in 2011-12
7 66.4 in 1956-57	7 58.2 in 2010-11	7 13.71 in 1992-93	7 2.00 in 1934-35
8 66.3 in 2018-19	8 58.6 in 2009-10	8 13.61 in 1963-64	8 2.07 in 2021-22
9 66.2 in 2022-23	9 59.0 in 1963-64	9 13.36 in 1982-83	9 2.14 in 1938-39
10 66.1 in 2007-08	10 59.5 in 1969-70	10 12.99 in 1957-58	10 2.86 in 1961-62
11 66.1 in 2007-08	11 59.5 in 1935-36	11 12.39 in 2018-19	
...	...	12 12.06 in 1930-31	
<b>33 64.3 in 2023-24</b>	<b>69 64.3 in 2023-24</b>	13 11.94 in 1958-59	
64.3 in 2020-21	64.3 in 2020-21	14 11.53 in 1962-63	
64.3 in 1970-71	64.3 in 1970-71	<b>15 11.19 in 2023-24</b>	
64.3 in 1926-27	64.3 in 1926-27		

Normal Temperature for Winter (Dec/Jan/Feb) at SRQ = 64.1°

Normal Rainfall for Winter (Dec/Jan/Feb) at SRQ = 7.04 in.

**VENICE** (records began in May 1955):

Warmest Februarys	Coolest Februarys	Wettest Februarys	Driest Februarys
1 72.5 in 2018	1 54.2 in 1958	1 6.36 in 1957	1 0.00 in 2001
2 70.7 in 2019	2 55.0 in 1978	2 5.63 in 1998	2 0.10 in 1999
3 70.5 in 2023	3 57.2 in 1980	3 5.62 in 1978	3 0.15 in 1989
4 70.1 in 1959	4 58.1 in 1977	4 5.51 in 1963	4 0.16 in 2023
5 69.8 in 2012	5 58.3 in 1973	5 5.47 in 1972	5 0.29 in 1988
6 69.8 in 2001	6 58.8 in 1968	6 4.92 in 2002	6 0.30 in 1997
7 68.5 in 1997	7 58.9 in 2010	7 4.92 in 1964	7 0.36 in 1962
8 68.2 in 2021	8 59.0 in 1964	8 4.57 in 2015	8 0.39 in 2011
9 68.2 in 1994	9 59.7 in 1969	9 4.37 in 1992	9 0.41 in 1994
10 68.0 in 1989	10 60.3 in 2015	10 4.26 in 1960	10 0.60 in 2000
...	60.3 in 1963	...	
...	...	<b>23 2.91 in 2024</b>	
<b>34 63.2 in 2024</b>	<b>28 63.2 in 2024</b>		

Normal Temperature for February at VNCF1 = 64.6°  
 Normal Rainfall for February at VNCF1 = 2.00 in.

-----

Warmest Winters	Coolest Winters	Wettest Winters	Driest Winters
1 68.3 in 1988-89	1 57.0 in 1976-77	1 19.42 in 1997-98	1 1.94 in 2011-12
2 68.1 in 1971-72	2 57.2 in 1957-58	2 14.71 in 1957-58	2 1.99 in 2021-22
3 67.9 in 2016-17	3 57.5 in 1977-78	3 12.68 in 2015-16	1.99 in 2000-01
4 67.9 in 2012-13	4 59.2 in 1975-76	4 12.65 in 1977-78	4 2.18 in 2016-17
5 67.5 in 2011-12	5 59.6 in 1963-64	5 12.35 in 2018-19	5 2.21 in 1975-76
6 67.1 in 2022-23	6 59.7 in 1969-70	6 12.01 in 1972-73	6 2.48 in 2022-23
7 67.0 in 1998-99	7 60.5 in 1962-63	7 11.45 in 1963-64	7 2.61 in 1961-62
8 66.6 in 2019-20	8 60.6 in 2010-11	8 11.34 in 1965-66	8 2.70 in 1984-85
9 66.2 in 1996-97	9 60.7 in 1979-80	9 11.20 in 2009-10	9 3.19 in 2012-13
10 65.9 in 2017-18	10 60.9 in 2002-03	<b>10 11.18 in 2023-24</b>	10 3.25 in 1996-97
...	60.9 in 1968-69		3.25 in 1973-74
...	...		
<b>24 64.0 in 2023-24</b>	<b>34 64.0 in 2023-24</b>		
64.0 in 1986-87	64.0 in 1986-87		

Normal Temperature for Winter (Dec/Jan/Feb) at VNCF1 = 63.8°  
 Normal Rainfall for Winter (Dec/Jan/Feb) at VNCF1 = 6.99 in.

-----

**MYAKKA RIVER STATE PARK** (Temperature records began in March 1956 and  
 Rainfall records began in September 1943):

Warmest Februarys	Coolest Februarys	Wettest Februarys	Driest Februarys
1 72.3 in 2018	1 52.7 in 1958	1 11.28 in 1998	1 Trace in 2001
2 71.7 in 2019	2 54.9 in 1968	2 9.55 in 1983	2 0.01 in 1950
3 70.3 in 1982	3 56.7 in 1963	3 6.01 in 1963	3 0.02 in 1999
4 70.0 in 1997	4 56.9 in 2010	4 5.88 in 1981	4 0.23 in 1989
5 69.7 in 1992	5 57.0 in 1978	5 5.49 in 1978	5 0.28 in 1944
6 69.4 in 1959	6 57.9 in 1973	6 5.41 in 1957	6 0.30 in 2023
7 69.1 in 2001	7 58.6 in 1980	7 5.33 in 2015	7 0.32 in 2011
8 68.9 in 2012	8 58.9 in 1977	8 5.21 in 2002	8 0.34 in 1949
68.9 in 1994	9 60.5 in 2009	9 4.97 in 1961	9 0.41 in 1945
10 68.7 in 1990	10 60.9 in 2015	10 4.62 in 1972	10 0.44 in 1948
	<b>11 61.1 in 2024</b>	...	...
		<b>26 3.10 in 2024</b>	<b>55 3.10 in 2024</b>

Normal Temperature for February at MKCF1 = 65.0°  
 Normal Rainfall for February at MKCF1 = 2.44 in.

-----

Warmest Winters	Coolest Winters	Wettest Winters	Driest Winters
1 68.4 in 2016-17	1 57.2 in 1962-63	1 27.20 in 1997-98	1 0.04 in 1949-50
2 66.7 in 1971-72	2 58.2 in 1976-77	2 16.36 in 1977-78	2 1.64 in 1943-44
3 66.6 in 1998-99	3 58.5 in 1980-81	3 14.36 in 2015-16	3 1.68 in 2000-01
4 66.5 in 1992-93	4 58.9 in 1977-78	4 14.27 in 1978-79	4 1.77 in 1948-49
5 66.4 in 1991-92	5 59.4 in 2002-03	5 13.83 in 1992-93	5 2.08 in 2011-12
6 66.3 in 2012-13	6 59.6 in 2009-10	6 13.60 in 1972-73	6 2.14 in 1984-85
7 66.1 in 2018-19	7 59.7 in 2010-11	7 13.28 in 1982-83	7 2.26 in 1944-45
66.1 in 2013-14	59.7 in 1960-61	8 12.66 in 1957-58	8 2.49 in 2021-22
66.1 in 1990-91	9 61.3 in 1975-76	9 12.60 in 2018-19	9 2.50 in 2022-23
10 66.0 in 2011-12	10 61.6 in 2000-01	10 12.09 in 2003-04	10 2.51 in 1975-76
66.0 in 1974-75	11 61.8 in 1979-80	11 11.64 in 1983-84	
	61.8 in 1972-73	12 11.60 in 1986-87	
	<b>13 61.9 in 2023-24</b>	13 11.49 in 1958-59	
	61.9 in 2008-09	14 10.95 in 2002-03	
	61.9 in 1987-88	15 10.87 in 2009-10	
		<b>16 10.40 in 2023-24</b>	

Normal Temperature for Winter (Dec/Jan/Feb) at MKCF1 = 64.0°  
 Normal Rainfall for Winter (Dec/Jan/Feb) at MKCF1 = 7.80 in.

-----

**WAUCHULA 2 N** (records began in January 1933):

Warmest Februarys		Coolest Februarys		Wettest Februarys		Driest Februarys	
1	71.1 in 1949	1	46.7 in 2010	1	8.92 in 1936	1	0.00 in 2001
2	70.8 in 2018	2	54.4 in 1958	2	8.82 in 1998		0.00 in 2000
3	70.7 in 1939	3	56.3 in 1978	3	7.99 in 1983	3	0.19 in 1945
4	70.1 in 1959	4	57.1 in 1947	4	7.37 in 1963	4	0.22 in 1989
5	69.8 in 1933	5	57.3 in 1968	5	6.29 in 1992	5	0.30 in 1997
6	69.5 in 1982	6	58.3 in 2015	6	6.03 in 2002	6	0.33 in 1950
7	69.4 in 1990	7	58.5 in 2007	7	5.46 in 1960	7	0.45 in 2009
8	69.3 in 1975		58.5 in 1942	8	5.34 in 1942		0.45 in 1949
9	69.1 in 2019	9	58.7 in 1980	9	5.26 in 1937	9	0.46 in 2023
10	69.0 in 2023	10	58.9 in 1964	10	5.24 in 1952	10	0.52 in 2018
...		...		...		...	
<b>60</b>	<b>61.3 in 2024</b>	<b>29</b>	<b>61.3 in 2024</b>	<b>50</b>	<b>2.00 in 2024</b>	<b>41</b>	<b>2.00 in 2024</b>

Normal Temperature for February at WAUF1 = 62.9°  
 Normal Rainfall for February at WAUF1 = 2.18 in.

-----

Warmest Winters		Coolest Winters		Wettest Winters		Driest Winters	
1	68.8 in 1948-49	1	49.6 in 2009-10	1	21.20 in 1997-98	1	0.72 in 1949-50
2	68.5 in 1936-37	2	56.5 in 2010-11	2	16.61 in 1935-36	2	1.45 in 2000-01
3	67.4 in 1971-72	3	58.0 in 1977-78	3	14.21 in 1965-66	3	1.90 in 2011-12
4	67.3 in 2007-08	4	58.1 in 1980-81	4	14.16 in 1957-58	4	2.00 in 1948-49
5	66.4 in 1974-75	5	58.4 in 2002-03	5	13.26 in 1982-83	5	2.11 in 1938-39
6	66.2 in 1990-91	6	58.6 in 1969-70	6	12.58 in 1972-73	6	2.13 in 1934-35
7	66.0 in 2016-17	7	58.7 in 1976-77	7	12.15 in 1978-79	7	2.33 in 1975-76
8	65.9 in 1988-89		58.7 in 1939-40	8	11.65 in 2009-10	8	2.34 in 1984-85
9	65.8 in 1956-57	9	58.8 in 2003-04	9	11.53 in 2018-19	9	2.40 in 1999-00
10	65.7 in 1961-62	10	59.0 in 1963-64	10	11.48 in 2015-16	10	2.42 in 1943-44
...		...		...		...	
<b>53</b>	<b>61.9 in 2023-24</b>	<b>23</b>	<b>61.9 in 2023-24</b>	<b>30</b>	<b>7.22 in 2023-24</b>	<b>58</b>	<b>7.22 in 2023-24</b>
	61.9 in 1997-98		61.9 in 1997-98				
	61.9 in 1965-66		61.9 in 1965-66				

Normal Temperature for Winter (Dec/Jan/Feb) at WAUF1 = 62.0°  
 Normal Rainfall for Winter (Dec/Jan/Feb) at WAUF1 = 6.60 in.

-----

**ARCHBOLD BIO STATION** (records began in January 1969):

Warmest Februarys	Coolest Februarys	Wettest Februarys	Driest Februarys
1 71.3 in 2018	1 55.2 in 1978	1 10.85 in 1983	1 0.00 in 2001
2 69.8 in 2019	2 55.4 in 2010	2 8.28 in 1998	2 0.22 in 2011
3 69.3 in 2001	3 56.8 in 1980	3 5.00 in 2004	3 0.27 in 1999
4 68.9 in 1990	4 57.8 in 1969	4 4.73 in 1992	4 0.33 in 1989
68.9 in 1982	5 58.1 in 1973	5 4.32 in 2020	5 0.37 in 2000
6 68.6 in 1975	6 58.2 in 1970	6 3.86 in 2002	6 0.38 in 2009
7 68.5 in 2023	7 59.2 in 1988	7 3.57 in 1970	7 0.49 in 1975
8 68.2 in 2021	8 59.3 in 2009	8 3.51 in 2016	8 0.53 in 1977
9 68.1 in 1997	9 59.8 in 2006	9 3.46 in 1981	9 0.54 in 2023
10 67.3 in 2012	59.8 in 1977	10 3.31 in 2006	0.54 in 2018
...	...	...	...
<b>34 61.6 in 2024</b>	<b>23 61.6 in 2024</b>	<b>19 2.38 in 2024</b>	<b>37 2.38 in 2024</b>
		2.38 in 1978	2.38 in 1978

Normal Temperature for February at ACHF1 = 64.2°

Normal Rainfall for February at ACHF1 = 2.25 in.

-----

Warmest Winters	Coolest Winters	Wettest Winters	Driest Winters
1 67.4 in 2016-17	1 57.0 in 1980-81	1 21.53 in 1997-98	1 0.64 in 2000-01
2 66.2 in 1971-72	2 57.4 in 1969-70	2 16.19 in 2015-16	2 1.44 in 1975-76
3 65.9 in 2019-20	3 58.1 in 1976-77	3 15.77 in 1982-83	3 1.77 in 1984-85
4 65.7 in 1974-75	4 58.2 in 1977-78	4 13.16 in 1978-79	4 2.04 in 2016-17
5 65.4 in 2022-23	5 58.5 in 2010-11	5 11.18 in 1969-70	5 2.22 in 2022-23
65.4 in 1990-91	6 58.6 in 2009-10	6 10.16 in 2003-04	6 2.43 in 2011-12
7 65.1 in 2015-16	7 60.0 in 2002-03	7 9.94 in 1972-73	7 2.64 in 2008-09
8 65.0 in 2017-18	60.0 in 1995-96	8 9.71 in 1994-95	8 2.68 in 1970-71
65.0 in 2007-08	9 60.2 in 1979-80	9 9.12 in 2018-19	9 3.44 in 1981-82
10 64.8 in 2018-19	10 60.4 in 2003-04	10 9.09 in 1977-78	10 3.48 in 2017-18
64.8 in 2012-13	60.4 in 1987-88	<b>11 8.93 in 2023-24</b>	
...	...		
<b>28 62.7 in 2023-24</b>	<b>28 62.7 in 2023-24</b>		

Normal Temperature for Winter (Dec/Jan/Feb) at ACHF1 = 63.4°

Normal Rainfall for Winter (Dec/Jan/Feb) at ACHF1 = 6.46 in.

-----

**PUNTA GORDA AREA** (Temperature records began in July 1914  
and Rainfall records began in May 1914):

Warmest Februarys	Coolest Februarys	Wettest Februarys	Driest Februarys
1 74.4 in 1949	1 57.3 in 1958	1 12.11 in 1936	1 0.00 in 1950
2 73.2 in 2018	2 57.5 in 2010	2 11.05 in 1983	2 0.01 in 2001
3 71.2 in 1959	57.5 in 1978	3 5.68 in 1963	3 0.04 in 1938
71.2 in 1932	4 58.6 in 1968	4 5.61 in 1982	0.04 in 1932
5 70.8 in 2023	5 58.9 in 1980	5 5.59 in 1937	5 0.09 in 1929
70.8 in 2019	6 59.3 in 1942	6 5.26 in 1998	6 0.13 in 1999
7 70.7 in 1918	7 59.5 in 1969	7 4.88 in 1924	7 0.16 in 2023
8 70.6 in 1982	8 59.8 in 1973	8 4.62 in 1964	8 0.18 in 1974
70.6 in 1962	9 60.1 in 1920	9 4.50 in 1952	9 0.25 in 1918
10 70.3 in 1957	10 60.2 in 1970	10 4.41 in 1940	10 0.26 in 1945
...	60.2 in 1947	...	...
<b>50 65.3 in 2024</b>	<b>55 65.3 in 2024</b>	<b>40 2.37 in 2024</b>	<b>67 2.37 in 2024</b>

Normal Temperature for February at PGD = 65.5°  
Normal Rainfall for February at PGD = 2.47 in.

-----

Warmest Winters	Coolest Winters	Wettest Winters	Driest Winters
1 72.0 in 1948-49	1 59.1 in 1977-78	1 16.32 in 1935-36	1 0.58 in 1949-50
2 70.7 in 1931-32	2 59.3 in 1976-77	2 15.66 in 2015-16	2 0.62 in 2000-01
3 70.2 in 1949-50	59.3 in 1969-70	3 15.45 in 1997-98	3 1.24 in 1938-39
4 69.2 in 1932-33	4 59.7 in 2010-11	4 15.16 in 1982-83	4 1.55 in 1948-49
5 68.5 in 1956-57	5 59.9 in 1957-58	5 12.66 in 1925-26	5 1.67 in 2011-12
6 68.3 in 1961-62	6 60.0 in 1980-81	6 12.65 in 1940-41	6 1.87 in 1927-28
7 68.0 in 1971-72	60.0 in 1963-64	7 11.76 in 1977-78	7 2.08 in 1973-74
8 67.9 in 1936-37	8 60.5 in 1939-40	8 11.71 in 1930-31	8 2.13 in 1932-33
9 67.5 in 2022-23	9 60.6 in 1975-76	9 11.51 in 1978-79	9 2.20 in 1961-62
10 67.4 in 2016-17	60.6 in 1968-69	10 11.42 in 1958-59	10 2.26 in 2016-17
67.4 in 1946-47	...	11 10.89 in 1972-73	...
...	<b>55 65.7 in 2023-24</b>	<b>12 10.81 in 2023-24</b>	...
<b>41 65.7 in 2023-24</b>	65.7 in 1929-30		
65.7 in 1929-30			

Normal Temperature for Winter (Dec/Jan/Feb) at PGD = 64.8°  
Normal Rainfall for Winter (Dec/Jan/Feb) at PGD = 6.78 in.

-----



**FORT MYERS AREA** (records began in January 1902):

Warmest Februarys	Coolest Februarys	Wettest Februarys	Driest Februarys
1 74.9 in 2018	1 55.5 in 1958	1 10.82 in 1983	1 Trace in 2001
2 73.6 in 2023	2 57.2 in 1978	2 7.12 in 1998	Trace in 1944
3 72.9 in 2019	3 58.8 in 1947	3 6.79 in 1902	Trace in 1911
4 72.3 in 1997	4 59.2 in 1902	4 5.93 in 1934	4 0.06 in 1948
5 72.2 in 1982	5 59.4 in 2010	5 5.50 in 1936	5 0.07 in 2023
6 71.8 in 1949	59.4 in 1942	6 5.13 in 1913	0.07 in 1949
7 71.4 in 2017	7 59.9 in 1968	7 4.65 in 1963	7 0.08 in 1950
71.4 in 2001	8 60.0 in 1912	8 4.34 in 1952	0.08 in 1929
9 71.3 in 1990	9 60.1 in 1970	9 4.00 in 1940	9 0.10 in 1908
10 71.2 in 2012	10 60.4 in 1941	10 3.89 in 1992	10 0.11 in 2000
...	...	...	0.11 in 1943
<b>64 65.6 in 2024</b>	<b>58 65.6 in 2024</b>	<b>38 2.61 in 2024</b>	<b>86 2.61 in 2024</b>
65.6 in 1999	65.6 in 1999		
65.6 in 1974	65.6 in 1974		

Normal Temperature for February at FMY = 67.3°

Normal Rainfall for February at FMY = 1.78 in.

-----

Warmest Winters	Coolest Winters	Wettest Winters	Driest Winters
1 70.9 in 2016-17	1 58.2 in 1957-58	1 18.71 in 2015-16	1 0.45 in 2000-01
2 70.7 in 1931-32	2 59.7 in 1969-70	2 15.59 in 1982-83	2 0.71 in 1948-49
3 70.3 in 2022-23	3 59.8 in 1976-77	3 15.19 in 1997-98	3 0.80 in 1910-11
4 70.1 in 1948-49	4 60.0 in 1977-78	4 13.74 in 1978-79	4 1.14 in 1984-85
5 69.8 in 1971-72	5 61.3 in 1980-81	5 12.26 in 1940-41	5 1.21 in 1926-27
6 69.7 in 2021-22	61.3 in 1939-40	6 12.02 in 1925-26	6 1.42 in 1974-75
7 69.6 in 2019-20	7 61.5 in 1963-64	<b>7 11.65 in 2023-24</b>	7 1.43 in 1904-05
8 69.4 in 1990-91	61.5 in 1950-51	8 11.51 in 2003-04	8 1.47 in 1928-29
9 69.1 in 1936-37	61.5 in 1903-04	9 11.06 in 1902-03	9 1.50 in 1961-62
10 69.0 in 2007-08	10 61.6 in 1930-31	10 10.85 in 1957-58	10 1.53 in 1938-39
...	...		
<b>47 66.2 in 2023-24</b>	<b>76 66.2 in 2023-24</b>		

Normal Temperature for Winter (Dec/Jan/Feb) at FMY = 66.4°

Normal Rainfall for Winter (Dec/Jan/Feb) at FMY = 6.11 in.

-----

For more local climate information, please visit our web page at <https://www.weather.gov/tampabay> and look within the "Climate and Past Weather" drop down menu above the map of the area.