



# NOAA - National Weather Service

Tampa Bay Area

2525 14th Avenue SE, Ruskin, Florida 33570

813-645-2323 <https://weather.gov/tampabay>

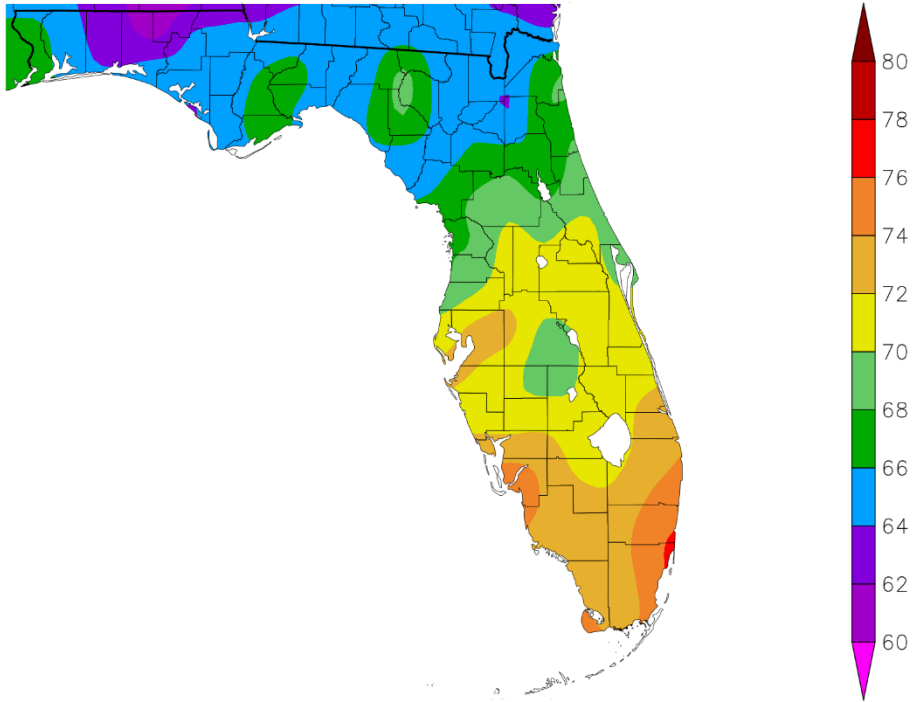
## March 2023 Climate Summary for West Central and Southwest Florida

March 2023 was a rather warm month overall, but there was a period around mid-month when temperatures were several degrees below normal. For the month temperatures averaged from about 1.5°F to over 5°F above normal across the area with several locations ending up in the Top Ten Warmest for March.

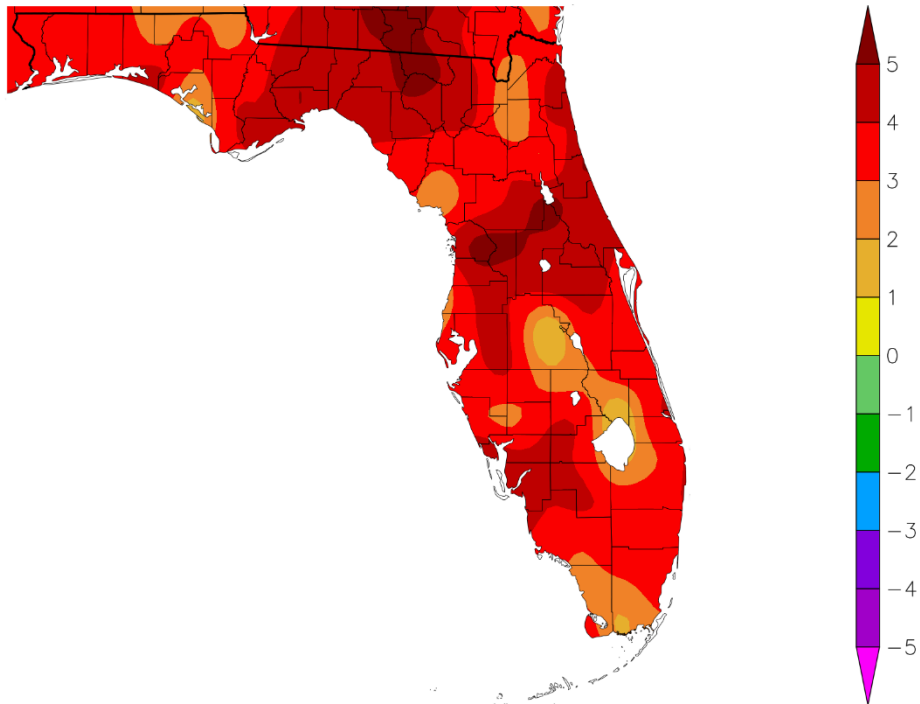
### MARCH TEMPERATURE RANKINGS (°F):

Location	Rank	March 2023 Avg Temp	Normal Mar Temp	Dep fm Normal	Records Began
Fort Myers Area	4th Warmest	75.3°	70.3°	+5.0°	Jan 1902
Plant City	3rd Warmest (tie)	73.1°	68.7°	+4.4°	Jan 1893
Venice	4th Warmest	72.9°	67.7°	+5.2°	May 1955
Lakeland Area	6th Warmest (tie)	72.7°	68.3°	+4.4°	Jan 1915
Punta Gorda Area	6th Warmest	72.5°	68.5°	+4.0°	May 1914
St Petersburg Area	11th Warmest	72.5°	69.0°	+3.5°	Aug 1914
Tampa Area	8th Warmest	72.3°	68.6°	+3.7°	Apr 1890
Winter Haven Area	9th Warmest (tie)	72.0°	69.1°	+2.9°	Mar 1941
Sarasota-Bradenton Area	7th Warmest	71.6°	68.1°	+3.5°	Jan 1911
Bartow	11th Warmest (tie)	71.3°	67.7°	+3.6°	Jun 1892
Wauchula 2 N	16th Warmest	70.1°	66.2°	+3.9°	Jan 1933
Archbold Bio Stn	9th Warmest (tie)	70.0°	67.1°	+2.9°	Jan 1969
St. Leo	28th Warmest	69.8°	66.4°	+3.4°	Apr 1895
Myakka River State Park	22nd Warmest (tie)	69.2°	67.9°	+1.3	Mar 1956
Brooksville Area	20th Warmest (tie)	69.0°	64.2°	+4.8°	Jan 1892
Tarpon Springs	33rd Warmest	69.0°	66.8°	+2.2°	Jan 1892
Inverness 3 SE	9th Warmest (tie)	68.8°	63.1°	+5.7°	Jul 1948
Chiefland 5 ESE	12th Warmest (tie)	65.8°	63.0°	+2.8°	Jul 1956

Temperature (F)  
3/1/2023 – 3/31/2023



Departure from Normal Temperature (F)  
3/1/2023 – 3/31/2023

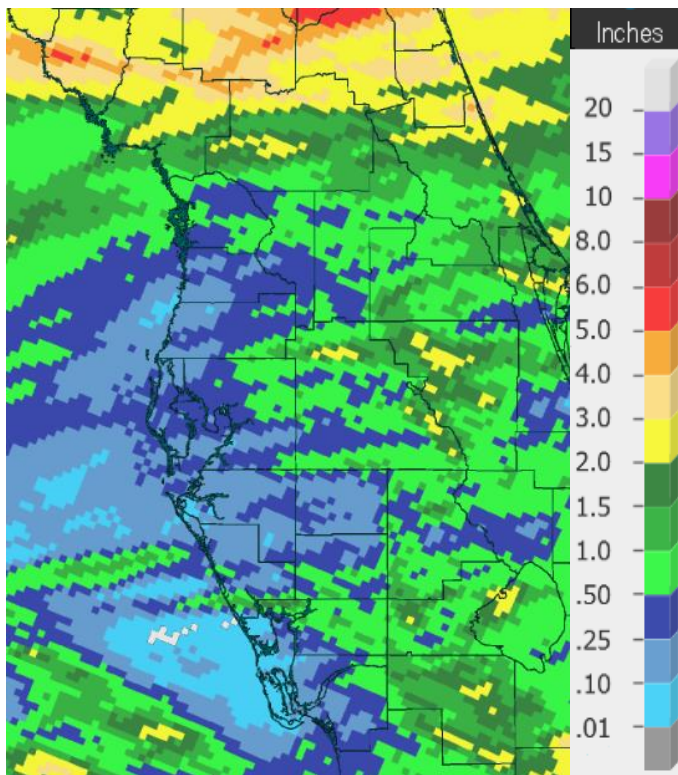


Graphics Source: NOAA Regional Climate Centers

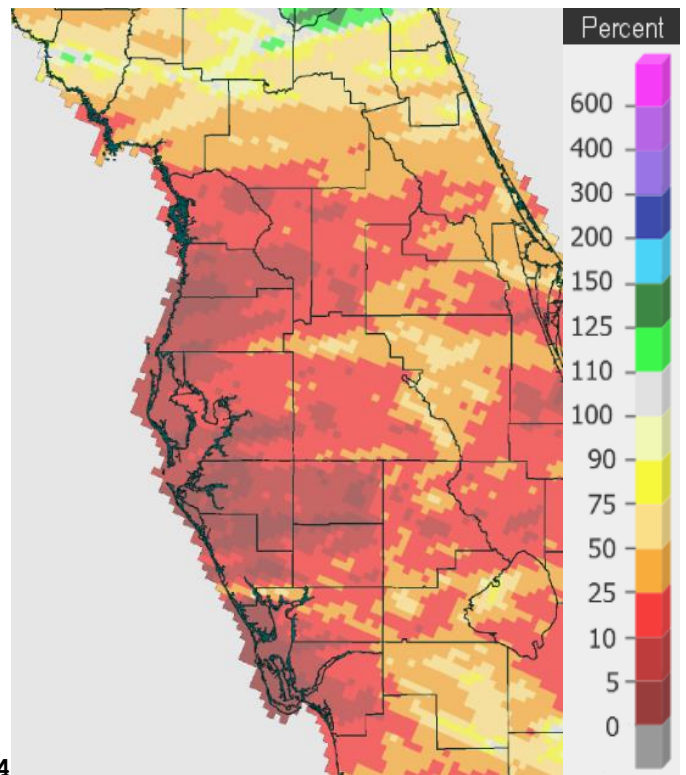
As for rainfall we had a few cold fronts move across the region, but most of these did not have much rain associated with them. Rainfall for the month was well below normal across most of the area with several locations ending up in the Top Ten Driest for March

**MARCH RAINFALL (inches):**

Location	Rank	March 2023 Rain Total	Normal Apr Rain	Dep fm Normal	Records Began
Chiefland 5 ESE	25th Driest	2.83	3.81	-0.98	Jul 1956
Lakeland Area	30th Driest	1.47	3.06	-1.59	Jan 1915
Punta Gorda Area	38th Driest	1.04	2.28	-1.24	May 1914
Inverness 3 SE	6th Driest	0.57	3.29	-2.72	Jul 1948
Archbold Bio Stn	5th Driest	0.50	2.87	-2.37	Jan 1969
Tampa Area	9th Driest (tie)	0.35	2.52	-2.17	Apr 1890
Myakka River State Park	4th Driest	0.18	3.00	-2.82	Sep 1943
Winter Haven Area	2nd Driest	0.19	3.04	-2.85	Mar 1941
Plant City	6th Driest	0.19	2.78	-2.59	Jan 1893
Sarasota-Bradenton Area	3rd Driest	0.18	2.85	-2.67	Jan 1911
Wauchula 2 N	4th Driest	0.12	2.99	-2.87	Jan 1933
Brooksville Area	6th Driest	0.12	2.66	-2.54	Jun 1892
Tarpon Springs	6th Driest	0.12	3.08	-2.96	Jan 1892
St. Petersburg Area	5th Driest	0.11	2.58	-2.47	Aug 1914
Fort Myers Area	8th Driest (tie)	0.10	2.07	-1.97	Jan 1902
St. Leo	5th Driest	0.09	3.18	-3.09	Apr 1895
Bartow	4th Driest	0.07	2.84	-2.77	Jun 1892
Venice	2nd Driest	0.05	2.97	-2.92	May 1955



Rainfall March 2023



Percent of Normal

On the following pages are tables of the Top Ten Warmest, Coolest, Wettest, and Driest Marches at some official NWS locations, which include the average/total for this March where available, and the 1991-2020 Normal (average) temperature and rainfall for the month of March.

**CHIEFLAND 5 SE** (Records began in July 1956):

Warmest Marches		Coolest Marches		Wettest Marches		Driest Marches	
1	69.6 in 1997	1	55.5 in 1969	1	14.88 in 1959	1	0.06 in 2006
2	69.5 in 2020	2	56.1 in 2010	2	12.96 in 1996	2	0.15 in 2020
3	69.2 in 2015	3	57.3 in 2013	3	9.20 in 2022	3	0.63 in 2017
4	68.7 in 2012	4	57.8 in 1996	4	9.06 in 2014	4	0.69 in 2013
5	67.6 in 1973	5	59.7 in 1971	5	8.90 in 1960	5	0.71 in 1976
6	67.5 in 2003	6	59.8 in 2005	6	8.86 in 1978	6	0.74 in 2019
7	67.2 in 1977	7	60.0 in 1962	7	8.80 in 1973	7	0.95 in 2007
8	66.3 in 1976	8	60.7 in 1981	8	8.53 in 1991	8	0.99 in 1967
9	66.0 in 1982	9	60.8 in 1966	9	8.33 in 1983	9	1.26 in 2004
	66.0 in 1974	10	60.9 in 2014	10	8.07 in 1992	10	1.27 in 1979
11	65.9 in 1961			...		...	
<b>12</b>	<b>65.8 in 2023</b>			<b>40</b>	<b>2.83 in 2023</b>	<b>25</b>	<b>2.83 in 2023</b>
	65.8 in 1990						

Normal Temperature for March at CHIF1 = 63.0°  
 Normal Rainfall for March at CHIF1 = 3.81 inches

**INVERNESS 3 SE** (Records began in July 1948):

Warmest Marches		Coolest Marches		Wettest Marches		Driest Marches	
1	70.9 in 1997	1	57.9 in 1996	1	16.00 in 1960	1	0.00 in 1956
2	70.7 in 2020	2	58.8 in 1969	2	11.13 in 1987	2	Trace in 2020
3	70.0 in 1953	3	59.5 in 2005	3	9.21 in 1959	3	0.01 in 2006
4	69.7 in 2012	4	60.1 in 1999	4	9.00 in 2010	4	0.17 in 2019
	69.7 in 1976	5	60.4 in 1960	5	8.83 in 1982	5	0.56 in 2012
6	69.2 in 1974	6	60.6 in 2018	6	8.63 in 2001	<b>6</b>	<b>0.57 in 2023</b>
	69.2 in 1961	7	61.2 in 1993	7	8.18 in 1964	7	0.65 in 2013
8	69.0 in 2015	8	61.8 in 1981	8	8.05 in 1958	8	0.66 in 1967
<b>9</b>	<b>68.8 in 2023</b>	9	61.9 in 1988	9	8.00 in 1996	9	0.77 in 1964
	68.8 in 1963		61.9 in 1978	10	7.96 in 1983	10	0.80 in 1949

Normal Temperature for March at INV1 = 63.1  
 Normal Rainfall for March at INV1 = 3.29 inches

**BROOKSVILLE AREA** (Records began in January 1892):

Warmest Marches	Coollest Marches	Wettest Marches	Driest Marches
1 73.0 in 1945	1 56.9 in 2010	1 17.70 in 1960	1 Trace in 1956
2 71.7 in 1935	2 57.4 in 1915	2 13.40 in 1987	2 0.02 in 2020
3 71.6 in 1938	3 57.7 in 2013	3 10.69 in 1959	3 0.04 in 2006
4 71.5 in 2020	4 59.3 in 1969	4 10.58 in 1924	4 0.07 in 2017
5 71.3 in 1974	5 59.6 in 1931	5 9.10 in 1930	5 0.10 in 1908
6 71.0 in 1929	6 60.1 in 1901	6 9.00 in 1983	<b>6 0.12 in 2023</b>
7 70.9 in 1948	7 60.2 in 1999	7 8.29 in 2011	7 0.15 in 1898
70.9 in 1908	8 60.3 in 1924	8 8.00 in 1991	8 0.16 in 1916
70.9 in 1897	9 60.7 in 2018	9 7.97 in 1958	9 0.17 in 2019
10 70.6 in 1939	60.7 in 1926	10 7.77 in 1982	0.17 in 1945
...			
<b>20 69.0 in 2023</b>			
69.0 in 1963			

Normal Temperature for March at BKV = 64.2°  
Normal Rainfall for March at BKV = 2.66 inches

---

**ST LEO** (Records began in April 1895):

Warmest Marches	Coollest Marches	Wettest Marches	Driest Marches
1 72.9 in 1907	1 57.5 in 1931	1 17.91 in 1960	1 0.00 in 2020
2 72.8 in 1945	57.5 in 1915	2 16.50 in 1987	2 Trace in 1907
72.8 in 1897	3 59.2 in 1969	3 12.47 in 2011	3 0.01 in 1895
4 72.7 in 1997	4 60.0 in 2013	4 12.05 in 1959	4 0.02 in 2006
5 72.4 in 1948	5 60.2 in 2010	5 10.91 in 1924	<b>5 0.09 in 2023</b>
6 72.3 in 2020	6 60.6 in 1930	6 10.05 in 1900	6 0.10 in 1908
7 71.8 in 2003	7 61.1 in 1960	7 9.53 in 1930	7 0.19 in 1904
8 71.6 in 1938	8 61.5 in 1914	8 9.31 in 1958	8 0.30 in 1949
9 71.0 in 1974	9 61.6 in 1924	9 8.74 in 1983	9 0.33 in 1956
10 70.9 in 2012	10 61.9 in 1941	10 8.70 in 1988	10 0.38 in 1917
...	...		
<b>28 69.8 in 2023</b>	<b>100 69.8 in 2023</b>		

Normal Temperature for March at STLF1 = 66.4°  
Normal Rainfall for March at STLF1 = 3.18 inches

---

**TARPON SPRINGS** (Records began in January 1892):

Warmest Marches	Coollest Marches	Wettest Marches	Driest Marches
1 74.6 in 1997	1 57.5 in 1915	1 14.21 in 1987	1 0.00 in 2020
2 73.2 in 1948	2 58.3 in 1969	2 13.72 in 1960	0.00 in 1907
3 73.0 in 2020	3 59.1 in 1960	3 12.56 in 1959	3 0.02 in 2006
73.0 in 1945	4 59.4 in 2013	4 11.29 in 2011	4 0.04 in 1908
5 71.8 in 2012	5 59.7 in 1931	5 9.68 in 1983	5 0.11 in 1949
71.8 in 1903	6 60.0 in 2010	6 8.41 in 1930	<b>6 0.12 in 2023</b>
71.8 in 1897	7 61.3 in 1941	7 8.18 in 1900	7 0.26 in 1898
8 71.6 in 1921	8 61.5 in 1968	8 8.12 in 1996	8 0.34 in 1956
9 71.3 in 1938	9 61.6 in 1914	9 7.31 in 1947	9 0.47 in 1945
71.3 in 1929	10 61.7 in 1892	10 7.22 in 2014	10 0.53 in 1935
...	...		
<b>33 69.0 in 2023</b>	<b>95 69.0 in 2023</b>		

Normal Temperature for March at TRPF1 = 66.8°

Normal Rainfall for March at TRPF1 = 3.08 inches

-----

**TAMPA AREA** (Records began in April 1890):

Warmest Marches	Coollest Marches	Wettest Marches	Driest Marches
1 74.4 in 2012	1 57.7 in 1915	1 12.64 in 1959	1 Trace in 2020
2 74.3 in 2020	2 58.1 in 1969	2 12.01 in 1987	Trace in 2006
3 73.9 in 2022	3 60.7 in 1931	3 11.00 in 1960	Trace in 1907
73.9 in 1997	4 60.9 in 1968	4 9.87 in 1930	4 0.06 in 1956
5 73.2 in 1945	5 61.6 in 2013	5 9.79 in 2011	5 0.08 in 1908
6 73.0 in 2015	61.6 in 2010	6 7.59 in 1983	0.08 in 1898
7 72.6 in 1921	7 61.7 in 1941	7 7.36 in 1900	7 0.20 in 1945
<b>8 72.3 in 2023</b>	8 61.9 in 1947	8 7.24 in 1924	8 0.22 in 1949
9 72.2 in 1907	9 62.0 in 1960	9 7.07 in 1931	<b>9 0.35 in 2023</b>
10 71.9 in 1897	62.0 in 1924	10 6.98 in 1957	0.35 in 2018
	62.0 in 1892	6.98 in 1947	

Normal Temperature for March at TPA = 68.6°

Normal Rainfall for March at TPA = 2.52 inches

**ST PETERSBURG AREA** (Records began in August 1914):

Warmest Marches	Coollest Marches	Wettest Marches	Driest Marches
1 74.6 in 2012	1 59.0 in 1915	1 11.79 in 1987	1 0.00 in 2020
2 74.5 in 2020	2 61.7 in 2010	2 11.33 in 1959	2 0.03 in 1956
74.5 in 1945	3 61.9 in 1969	3 8.38 in 1931	3 0.09 in 2006
4 73.9 in 1948	4 62.4 in 1996	4 8.20 in 1983	0.09 in 1939
5 73.3 in 1997	5 62.5 in 1931	5 8.14 in 2010	<b>5 0.11 in 2023</b>
6 73.2 in 1921	6 63.1 in 1960	6 7.86 in 1970	6 0.19 in 1917
7 73.0 in 2015	7 63.3 in 2013	7 7.75 in 1960	7 0.24 in 1916
8 72.8 in 1976	8 63.4 in 1947	8 7.65 in 1952	8 0.31 in 2002
9 72.7 in 1918	63.4 in 1924	9 7.30 in 2011	0.31 in 1949
10 72.6 in 2003	10 63.5 in 1941	10 7.21 in 2001	10 0.37 in 1945
<b>11 72.5 in 2023</b>			

Normal Temperature for March at SPG = 69.0°

Normal Rainfall for March at SPG = 2.58 inches

---

**PLANT CITY** (Records began in September 1892):

Warmest Marches	Coollest Marches	Wettest Marches	Driest Marches
1 74.3 in 2020	1 56.9 in 1931	1 15.68 in 1960	1 0.00 in 1908
2 73.2 in 1907	2 59.1 in 1915	2 13.70 in 1959	0.00 in 1907
<b>3 73.1 in 2023</b>	3 60.3 in 1932	3 12.78 in 1987	3 0.01 in 2006
73.1 in 1997	4 60.5 in 1969	4 10.59 in 1983	4 0.02 in 2020
5 72.6 in 2015	5 60.6 in 2010	5 8.81 in 1930	5 0.08 in 1999
6 72.4 in 2022	6 61.0 in 1930	6 7.93 in 2010	<b>6 0.19 in 2023</b>
72.4 in 2016	61.0 in 1901	7 7.81 in 1924	7 0.21 in 1945
8 72.2 in 1948	8 61.3 in 2013	8 7.51 in 1998	8 0.32 in 1916
72.2 in 1945	9 61.4 in 1924	9 7.49 in 2011	9 0.39 in 1975
10 71.8 in 2012	10 61.5 in 1941	7.49 in 2001	10 0.40 in 2017
71.8 in 1903			

Normal Temperature for March at PLCF1 = 68.7°

Normal Rainfall for March at PLCF1 = 2.78 inches

---

**LAKELAND AREA** (Records began in January 1915):

Warmest Marches	Coollest Marches	Wettest Marches	Driest Marches
1 73.5 in 2020	1 60.0 in 1969	1 12.94 in 1960	1 0.00 in 2020
73.5 in 1921	2 60.1 in 1915	2 12.16 in 1959	2 0.22 in 2006
3 73.4 in 1918	3 61.5 in 2010	3 10.75 in 1987	0.22 in 1916
4 72.8 in 1997	61.5 in 1960	4 9.22 in 1983	4 0.26 in 2021
72.8 in 1945	61.5 in 1931	5 8.57 in 1930	5 0.53 in 1925
<b>6 72.7 in 2023</b>	6 61.6 in 2013	6 8.53 in 2010	6 0.57 in 2009
72.7 in 1935	61.6 in 1941	7 8.15 in 1942	7 0.63 in 2000
8 72.6 in 1938	8 61.9 in 1924	8 7.44 in 2001	8 0.67 in 2007
9 72.1 in 2012	9 62.2 in 1947	9 7.20 in 1998	9 0.68 in 2002
72.1 in 2003	10 62.5 in 1968	10 6.90 in 1982	10 0.69 in 2017
		...	...
		<b>80 1.47 in 2023</b>	<b>30 1.47 in 2023</b>

Normal Temperature for March at LLDF1 = 68.3°

Normal Rainfall for March at LLDF1 = 3.06 inches

-----

**WINTER HAVEN AREA** (Records began in January 1941):

Warmest Marches	Coollest Marches	Wettest Marches	Driest Marches
1 74.6 in 2020	1 58.4 in 1969	1 12.18 in 1960	1 0.14 in 2020
2 73.5 in 2015	2 61.5 in 2013	2 10.97 in 1959	<b>2 0.19 in 2023</b>
73.5 in 1945	3 61.6 in 2010	3 9.61 in 1987	3 0.30 in 1956
4 73.4 in 1997	4 62.2 in 1960	4 8.31 in 2011	4 0.38 in 2006
73.4 in 1948	5 62.5 in 1968	5 7.56 in 2010	5 0.41 in 2021
6 72.8 in 2012	6 62.9 in 1981	6 7.19 in 1998	6 0.48 in 2002
7 72.5 in 2022	62.9 in 1941	7 7.16 in 1970	7 0.57 in 1945
72.5 in 2003	8 63.5 in 1996	8 6.93 in 1983	8 0.58 in 2018
<b>9 72.0 in 2023</b>	9 63.6 in 1983	9 6.60 in 1942	0.58 in 2017
72.0 in 1977	10 64.0 in 1947	10 6.55 in 1969	10 0.60 in 2000

Normal Temperature for March at GIF = 69.1°

Normal Rainfall for March at GIF = 3.04 inches



**BARTOW** (Records began in June 1892):

Warmest Marches	Coollest Marches	Wettest Marches	Driest Marches
1 76.1 in 2015	1 60.8 in 1914	1 11.53 in 1959	1 0.00 in 2020
2 74.6 in 1903	2 61.5 in 1969	2 10.25 in 1987	2 0.02 in 1908
3 74.0 in 1997	3 62.3 in 2010	3 8.99 in 1960	3 0.05 in 1945
4 73.3 in 2003	4 62.5 in 1901	4 8.57 in 1944	<b>4 0.07 in 2023</b>
5 73.2 in 1948	5 62.7 in 1947	5 8.12 in 2001	5 0.10 in 2006
6 72.6 in 2012	6 62.9 in 1960	6 8.10 in 1947	6 0.27 in 2021
7 72.5 in 1945	7 63.5 in 1996	7 7.72 in 1930	7 0.36 in 2002
72.5 in 1907	63.5 in 1968	8 7.28 in 2010	8 0.41 in 1999
72.5 in 1897	9 63.9 in 2018	9 7.11 in 1970	9 0.45 in 2007
10 72.3 in 2020	10 64.0 in 1983	10 7.00 in 1983	10 0.46 in 1897
<b>11 71.3 in 2023</b>			
71.3 in 1929			

Normal Temperature for March at BARF1 = 67.7°

Normal Rainfall for March at BARF1 = 2.84 inches

-----

**SARASOTA-BRADENTON AREA** (Records began in January 1911):

Warmest Marches	Coollest Marches	Wettest Marches	Driest Marches
1 73.1 in 2020	1 57.0 in 1915	1 11.10 in 1987	1 Trace in 1939
2 73.0 in 2012	2 59.3 in 1931	2 10.77 in 2001	2 0.10 in 1945
3 72.6 in 1997	3 60.4 in 2010	3 10.60 in 1958	<b>3 0.18 in 2023</b>
4 71.9 in 2003	4 60.7 in 1969	4 8.81 in 1959	4 0.21 in 1949
71.9 in 1948	5 60.8 in 2013	5 8.63 in 1983	5 0.26 in 1956
6 71.7 in 2022	6 61.7 in 1924	6 8.49 in 2011	6 0.28 in 2007
<b>7 71.6 in 2023</b>	61.7 in 1914	7 8.16 in 1998	7 0.34 in 1935
8 71.5 in 2015	8 62.0 in 1941	8 7.42 in 1982	8 0.37 in 1976
9 71.1 in 1921	62.0 in 1916	9 7.37 in 1969	9 0.44 in 1917
10 70.9 in 2016	10 62.6 in 1968	10 7.10 in 1970	10 0.47 in 2004

Normal Temperature for March at SRQ = 68.1°

Normal Rainfall for March at SRQ = 2.85 inches

**VENICE** (Records began in April 1955):

Warmest Marches	Coollest Marches	Wettest Marches	Driest Marches
1 74.4 in 1997	1 61.6 in 1969	1 11.21 in 1987	1 0.00 in 2020
2 74.0 in 2012	2 62.8 in 2013	2 9.57 in 1983	<b>2 0.05 in 2023</b>
3 73.8 in 2003	3 62.9 in 1960	3 9.38 in 1998	3 0.10 in 1956
<b>4 72.5 in 2023</b>	4 63.2 in 1968	4 8.83 in 2010	4 0.14 in 2009
5 72.2 in 2015	5 63.3 in 1962	5 8.05 in 1970	5 0.19 in 1971
6 72.1 in 2022	6 63.4 in 2010	6 7.74 in 1959	6 0.33 in 1977
7 71.7 in 2020	63.4 in 1981	7 7.45 in 2011	7 0.36 in 2006
8 70.8 in 2016	8 63.9 in 1978	8 7.41 in 2001	8 0.39 in 1967
70.8 in 2000	9 64.3 in 1996	9 7.10 in 1969	9 0.40 in 1974
10 70.4 in 1989	64.3 in 1988	10 6.60 in 1958	10 0.53 in 2004
	64.3 in 1958		

Normal Temperature for March at VNCF1 = 67.7°

Normal Rainfall for March at VNCF1 = 2.97 inches

-----

**MYAKKA RIVER STATE PARK** (Temperature records began in March 1956  
and Rainfall records began in Sep 1943):

Warmest Marches	Coollest Marches	Wettest Marches	Driest Marches
1 74.5 in 2003	1 60.5 in 2013	1 12.88 in 1987	1 0.08 in 1956
2 74.2 in 1997	2 61.4 in 2010	2 12.24 in 1998	2 0.13 in 2006
3 72.6 in 2015	3 62.4 in 1960	3 9.74 in 1969	3 0.16 in 1945
4 71.9 in 2012	4 63.7 in 1971	4 8.80 in 1959	<b>4 0.18 in 2023</b>
5 71.6 in 1977	5 64.4 in 1996	5 8.21 in 1958	5 0.23 in 2020
6 71.3 in 2016	64.4 in 1959	6 7.81 in 1983	0.23 in 1966
71.3 in 1976	7 64.8 in 1958	7 7.54 in 2010	7 0.29 in 2002
8 71.2 in 1992	8 65.2 in 1981	8 7.51 in 2011	0.29 in 1977
9 71.0 in 1982	9 65.4 in 2018	9 7.35 in 2001	9 0.41 in 1953
10 70.5 in 1995	10 65.7 in 1962	10 7.04 in 1947	10 0.42 in 1949
...	65.7 in 1957		
<b>22 69.2 in 2023</b>			
69.2 in 1991			

Normal Temperature for March at MKCF1 = 67.9°

Normal Rainfall for March at MKCF1 = 3.00 inches

**WAUCHULA 2 N** (Records began in January 1933):

Warmest Marches		Coolest Marches		Wettest Marches		Driest Marches	
1	72.9 in 1948	1	57.7 in 2013	1	12.14 in 1998	1	0.00 in 2020
2	72.6 in 2003	2	61.3 in 1969	2	9.22 in 1959		0.00 in 2002
3	72.0 in 1974	3	62.3 in 2018	3	7.72 in 1958	3	0.08 in 1967
	72.0 in 1945	4	62.5 in 1996	4	7.03 in 1987	<b>4</b>	<b>0.12 in 2023</b>
5	71.7 in 1938	5	62.7 in 1960	5	6.98 in 2001	5	0.18 in 1945
6	71.6 in 1939	6	63.4 in 1947	6	6.85 in 1965	6	0.20 in 1935
7	71.5 in 1935	7	63.5 in 1999	7	6.76 in 1947	7	0.22 in 2012
8	71.2 in 1977		63.5 in 1968	8	6.55 in 1983	8	0.30 in 2006
9	70.9 in 1997	9	63.6 in 1941	9	6.53 in 1969		0.30 in 1974
	70.9 in 1973	10	63.7 in 1983	10	5.80 in 1970	10	0.35 in 1976
...							
<b>16</b>	<b>70.1 in 2023</b>						

Normal Temperature for March at WAUF1 = 66.2°

Normal Rainfall for March at WAUF1 = 2.99 inches

-----

**ARCHBOLD BIO STN** (Records began in January 1969):

Warmest Marches		Coolest Marches		Wettest Marches		Driest Marches	
1	73.1 in 2003	1	58.6 in 2010	1	10.20 in 2010	1	0.05 in 2020
2	72.6 in 1997	2	58.8 in 2013	2	8.85 in 1970		0.05 in 1974
3	72.3 in 2015	3	61.1 in 1969	3	7.52 in 2003	3	0.06 in 2002
4	70.8 in 2022	4	62.2 in 1996	4	7.43 in 1969	4	0.22 in 2004
5	70.6 in 2016		62.2 in 1983	5	6.61 in 1987	<b>5</b>	<b>0.50 in 2023</b>
	70.6 in 1977	6	62.9 in 2018	6	6.52 in 1982	6	0.66 in 2007
	70.6 in 1974	7	63.2 in 1999	7	6.42 in 1984	7	0.76 in 1999
8	70.2 in 2012	8	63.3 in 1981	8	6.21 in 1988	8	0.78 in 1972
<b>9</b>	<b>70.0 in 2023</b>	9	63.8 in 1998	9	6.03 in 1986	9	0.83 in 2021
	70.0 in 2020	10	63.9 in 1971	10	5.74 in 1993	10	0.87 in 2006
	70.0 in 1976						

Normal Temperature for March at ACHF1 = 67.1°

Normal Rainfall for March at ACHF1 = 2.87 inches

-----

**PUNTA GORDA AREA** (Records began in May 1914):

Warmest Marches	Coollest Marches	Wettest Marches	Driest Marches
1 74.9 in 1948	1 57.9 in 1915	1 9.91 in 1947	1 0.00 in 1956
2 74.8 in 1945	2 62.0 in 2010	2 9.26 in 1970	2 Trace in 2020
3 73.7 in 1997	3 62.1 in 1916	3 8.71 in 2010	Trace in 1920
4 73.0 in 1953	4 62.3 in 1969	4 8.18 in 1987	4 0.09 in 2007
5 72.9 in 2003	62.3 in 1931	5 7.64 in 1930	5 0.10 in 1945
<b>6 72.5 in 2023</b>	6 62.4 in 2013	6 7.23 in 1960	0.10 in 1935
7 72.4 in 2015	7 63.5 in 1941	7 6.43 in 1958	7 0.15 in 1967
8 72.3 in 1944	8 64.2 in 1968	8 6.34 in 1969	8 0.16 in 1938
72.3 in 1968	9 64.3 in 1924	9 6.14 in 1983	9 0.21 in 1923
10 72.2 in 1961	10 64.7 in 1971	10 5.84 in 1959	10 0.28 in 2006
72.2 in 1929		...	...
		<b>67 1.04 in 2023</b>	<b>38 1.04 in 2023</b>

Normal Temperature for March at PGD = 68.5°

Normal Rainfall for March at PGD = 2.28 inches

-----

**FORT MYERS AREA** (Records began in January 1902):

Warmest Marches	Coollest Marches	Wettest Marches	Driest Marches
1 75.9 in 1997	1 61.1 in 1915	1 18.58 in 1970	1 0.00 in 1935
2 75.8 in 2022	2 62.4 in 1931	2 10.31 in 1958	2 0.02 in 2020
3 75.4 in 2020	3 63.0 in 2010	3 8.94 in 1947	3 0.03 in 1974
<b>4 75.3 in 2023</b>	4 63.4 in 1969	4 7.78 in 1903	4 0.04 in 1939
5 74.8 in 2003	5 63.7 in 1941	5 7.41 in 1983	5 0.05 in 1956
6 74.6 in 2015	6 64.3 in 2013	6 7.21 in 2010	6 0.08 in 1907
7 74.4 in 1948	7 64.4 in 1914	7 6.88 in 1941	7 0.09 in 1977
8 74.3 in 2012	8 64.5 in 1960	8 6.64 in 1931	<b>8 0.10 in 2023</b>
9 73.2 in 1921	9 64.6 in 1968	9 6.59 in 2005	0.10 in 1945
10 73.1 in 1929	10 65.0 in 1926	10 6.38 in 1984	10 0.13 in 2007
			0.13 in 1949

Normal Temperature for March at FMY = 70.3°

Normal Rainfall for March at FMY = 2.07 inches

-----

For more Climate information visit our web site at the following link:  
<https://www.weather.gov/tampabay> and then go to the Climate and Past  
Weather drop down menu above the graphical forecast images.