



NOAA - National Weather Service

Tampa Bay Area

2525 14th Avenue SE, Ruskin, Florida 33570

813-645-2323 <https://weather.gov/tampabay>

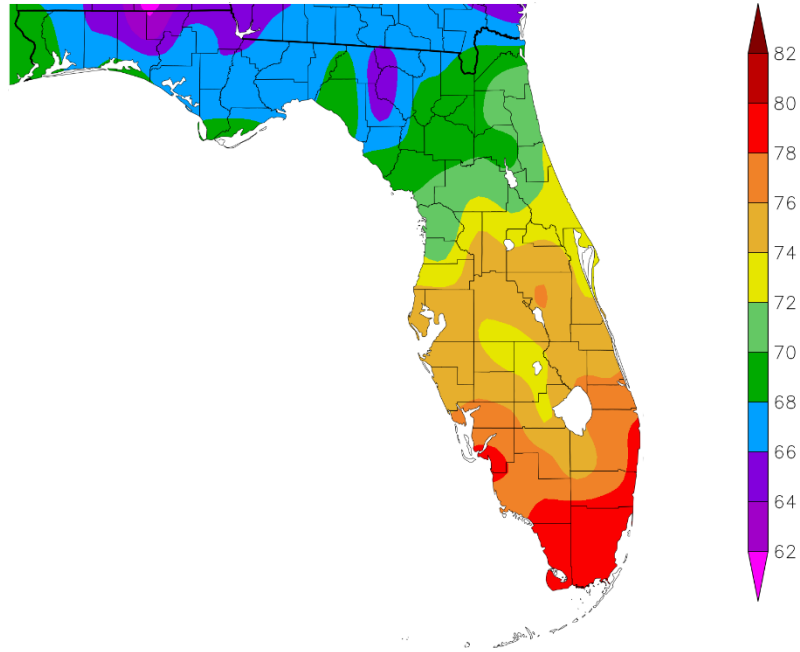
October 2022 Climate Summary for West Central and Southwest Florida

October 2022 was rather warm and humid on many days, but there was a decent cool down for a few days during the third week that helped to keep average temperatures near to a few degrees below normal for the month.

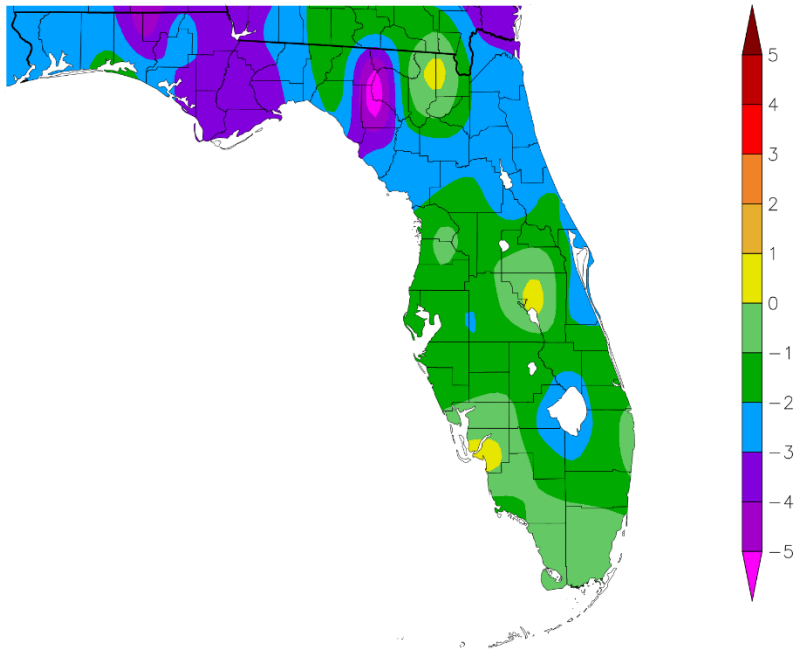
OCTOBER TEMPERATURE (°F) :

Location	October 2022 Rank	Avg Temp	Normal Oct Temp	Dep fm Normal	Records Began
Fort Myers Area	40th Warmest	78.1°	78.0°	+0.1°	Jan 1902
Punta Gorda Area	46th Coolest (tie)	76.4°	77.2°	-0.8°	May 1914
St Petersburg Area	44th Coolest (tie)	76.3°	77.8°	-1.5°	Aug 1914
Tampa Area	75th Coolest	75.7°	77.4°	-1.7°	Apr 1890
Venice	24th Coolest	75.6°	76.6°	-1.0°	May 1955
Sarasota-Bradenton Area	53rd Coolest	75.3°	77.3°	-2.0°	Jan 1911
Lakeland Area	49th Coolest (tie)	75.0°	76.4°	-1.4°	Jan 1915
Plant City	57th Coolest	74.5°	76.7°	-2.2°	Sep 1892
Tarpon Springs	58th Coolest (tie)	74.4°	75.6°	-1.2°	Jan 1892
Wauchula 2 N	31st Coolest	74.1°	75.3°	-1.2°	Jan 1933
Bartow	34th Coolest (tie)	73.9°	75.5°	-1.6°	Jun 1892
Archbold Bio Stn	13th Coolest (tie)	73.7°	75.7°	-2.0°	Jan 1969
St. Leo	30th Coolest (tie)	72.5°	74.1°	-1.6°	Apr 1895
Brooksville Area	31st Coolest (tie)	72.1°	73.1°	-1.0°	Jan 1892
Inverness 3 SE	16th Coolest (tie)	71.5°	72.4°	-0.9°	Jul 1948
Chiefland 5 SE	10th Coolest	68.8°	71.5°	-2.7°	Jul 1956

Temperature (F)
10/1/2022 - 10/31/2022



Departure from Normal Temperature (F)
10/1/2022 - 10/31/2022

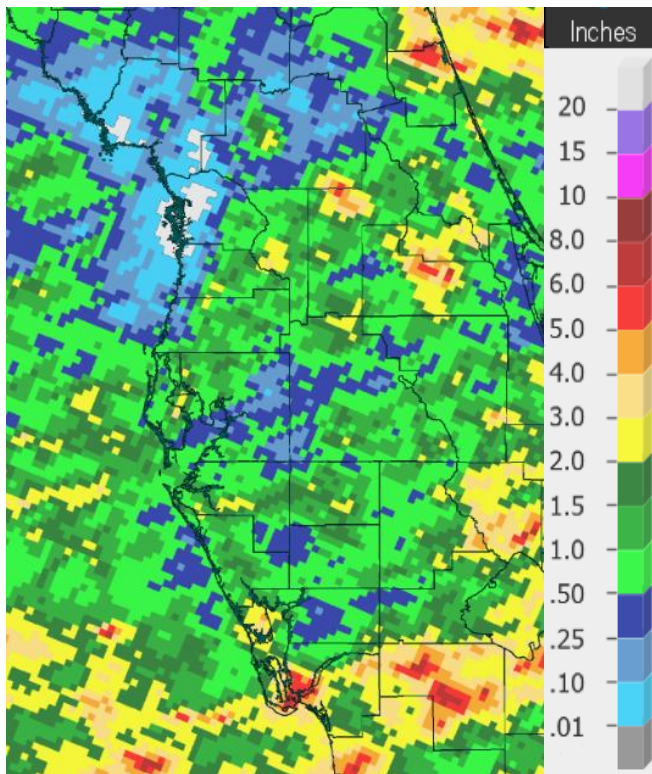


Graphics Source: NOAA Regional Climate Centers

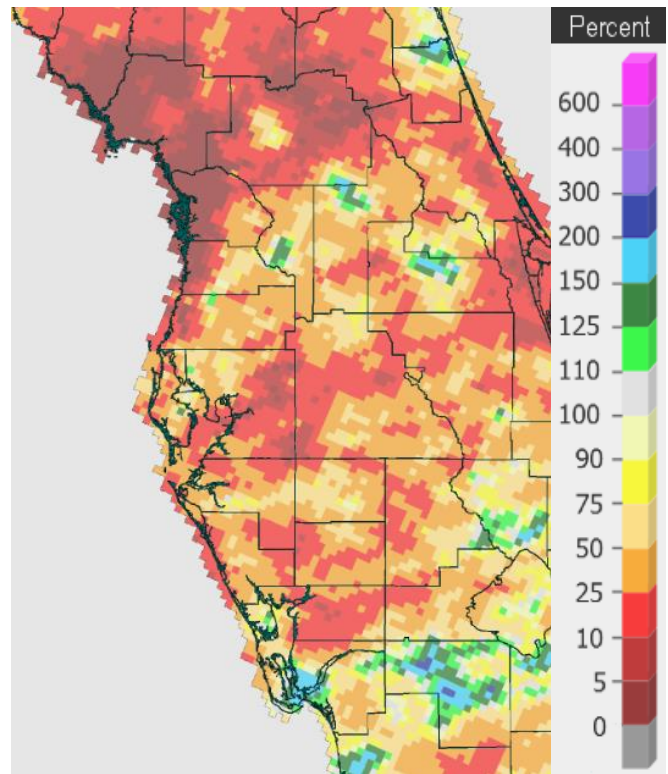
Rainfall in October 2022 was mostly below normal with some spots here and there seeing above normal amounts. Amounts were so low in some areas that several of the official NWS climate locations ended up in the Top Ten Driest for October. However, these below normal amounts are not as significant in October compared to the summer months since the average rainfall for the month is only about 2.00 to 3.50 inches across the area.

OCTOBER RAINFALL (inches):

Location	Rank	October 2022 Rain Total	Normal Oct Rain	Dep fm Normal	Records Began
Sarasota-Bradenton Area	42nd Driest (tie)	1.78	2.76	-0.98	Jan 1911
Inverness 3 SE	30th Driest	1.62	2.92	-1.30	Jul 1948
Fort Myers Area	33rd Driest (tie)	1.59	3.08	-1.49	Jan 1902
Tarpon Springs	41st Driest	1.23	3.19	-1.96	Jan 1892
Tampa Area	34th Driest	1.10	2.34	-1.24	Apr 1890
Wauchula 2 N	21st Driest	1.04	3.09	-2.05	Jan 1933
Brooksville Area	36th Driest	0.99	2.79	-1.80	Jan 1892
St. Leo	21st Driest	0.85	3.06	-2.21	Apr 1895
Venice	8th Driest	0.69	3.35	-2.66	May 1955
Archbold Bio Stn	9th Driest	0.69	3.41	-2.72	Jan 1969
Bartow	16th Driest	0.59	3.03	-2.44	Jun 1892
Lakeland Area	11th Driest (tie)	0.41	3.04	-2.63	Jan 1915
Punta Gorda Area	7th Driest	0.33	3.02	-2.69	May 1914
Plant City	10th Driest	0.33	2.58	-2.25	Sep 1892
St. Petersburg Area	6th Driest	0.23	2.16	-1.93	Aug 1914
Chiefland 5 SE	2nd Driest	0.02	3.17	-3.15	Jan 1969



Rainfall October 2022



Percent of Normal

On the following pages are tables of the Top Ten Warmest, Coolest, Driest, and Wettest Octobers at some official NWS locations, which include the average/total for this October where available, and the 1991-2020 Normal (average) temperature and rainfall for the month of October.

CHIEFLAND 5 SE (records began in July 1956):

Warmest Octobers		Coolest Octobers		Wettest Octobers		Driest Octobers	
1	77.1 in 1959	1	66.9 in 1987	1	8.45 in 1959	1	0.00 in 2010
2	76.9 in 2018	2	67.1 in 1976	2	8.17 in 1997	2	0.02 in 2022
3	76.6 in 2020	3	67.4 in 1977	3	7.32 in 1995	3	0.11 in 2001
4	76.5 in 2019	4	67.6 in 1957	4	7.12 in 1971	4	0.14 in 1973
5	75.5 in 1985	5	67.9 in 1967	5	7.01 in 1993	5	0.15 in 1979
6	75.0 in 1998		67.9 in 1964	6	6.98 in 2019		0.15 in 1974
7	74.6 in 2002	7	68.0 in 1974	7	6.44 in 1992	7	0.17 in 2000
8	74.5 in 2007	8	68.5 in 2011	8	6.41 in 2007	8	0.20 in 1987
9	74.2 in 1971	9	68.6 in 2010	9	6.40 in 2002	9	0.23 in 1981
	74.2 in 1970	10	68.8 in 2022	10	5.66 in 1983	10	0.24 in 1984

Normal Temperature for October at CHIF1 = 71.5°

Normal Rainfall for October at CHIF1 = 3.17 inches

INVERNESS 3 SE (records began in July 1948):

Warmest Octobers		Coolest Octobers		Wettest Octobers		Driest Octobers	
1	78.4 in 2019	1	67.8 in 1987	1	10.60 in 1958	1	Trace in 1974
2	78.2 in 1959	2	68.1 in 1976	2	9.04 in 1992	2	0.03 in 2010
3	77.6 in 2020	3	69.7 in 1977	3	6.73 in 2019		0.03 in 1961
4	77.3 in 1949	4	69.9 in 2011	4	5.81 in 1995	4	0.19 in 1963
5	76.8 in 2007	5	70.1 in 1992	5	5.71 in 1956	5	0.20 in 2000
6	76.0 in 1970	6	70.2 in 1988	6	5.68 in 1960	6	0.62 in 1967
7	75.7 in 1995	7	70.5 in 1997	7	5.53 in 1959	7	0.69 in 2015
8	75.6 in 1969	8	70.6 in 1954	8	5.38 in 1993	8	0.70 in 1987
9	75.5 in 1971	9	70.8 in 2006	9	5.33 in 1975	9	0.71 in 2018
	75.5 in 1960		70.8 in 2001	10	4.91 in 1971	10	0.74 in 1977
	75.5 in 1950	
		...	71.5 in 2022	43	1.62 in 2022	30	1.62 in 2022
			71.5 in 2014				

Normal Temperature for October at INV1 = 72.4°

Normal Rainfall for October at INV1 = 2.92 inches

BROOKSVILLE AREA (records began in January 1892):

Warmest Octobers		Coolest Octobers		Wettest Octobers		Driest Octobers	
1	78.5 in 1959	1	69.4 in 1920	1	15.64 in 1921	1	0.00 in 2010
	78.5 in 1919	2	69.7 in 1892	2	12.52 in 1915	2	0.01 in 1974
3	78.4 in 1911	3	70.3 in 2010	3	10.77 in 1995	3	0.07 in 2000
4	78.3 in 1941	4	70.4 in 2000	4	9.63 in 1944	4	0.12 in 1984
5	78.1 in 2019		70.4 in 1952	5	8.97 in 1958	5	0.18 in 1951
6	77.7 in 2020	6	70.5 in 1923	6	8.92 in 1922	6	0.22 in 1963
7	77.1 in 2007	7	70.7 in 1953	7	7.58 in 1936	7	0.28 in 1935
8	77.0 in 1949		70.7 in 1924	8	7.50 in 1952	8	0.30 in 1901
9	76.8 in 1915	9	70.8 in 1943	9	6.87 in 1911	9	0.35 in 1977
10	76.7 in 1928	10	70.9 in 2008	10	6.35 in 1910	10	0.36 in 1979
	76.7 in 1912		70.9 in 1896	
...		...		94	0.99 in 2022	36	0.99 in 2022
79	72.1 in 2022	31	72.1 in 2022				
	72.1 in 2003		72.1 in 2003				
	72.1 in 2001		72.1 in 2001				

Normal Temperature for October at BKV = 73.1°

Normal Rainfall for October at BKV = 2.79 inches

ST LEO (records began in April 1895):

Warmest Octobers		Coolest Octobers		Wettest Octobers		Driest Octobers	
1	79.6 in 1985	1	69.2 in 1930	1	15.80 in 1921	1	0.00 in 2010
2	78.9 in 2002	2	69.4 in 1903	2	10.38 in 1924	2	0.03 in 2000
3	78.8 in 1941	3	69.9 in 1920	3	9.66 in 1910	3	0.10 in 1974
4	78.6 in 2007	4	70.0 in 1943	4	8.45 in 1922		0.10 in 1940
5	78.4 in 2019	5	70.1 in 1987	5	7.89 in 2007	5	0.14 in 1963
	78.4 in 2009	6	70.4 in 2011	6	7.49 in 1944	6	0.23 in 1984
	78.4 in 1959	7	70.5 in 1992	7	7.23 in 2012	7	0.29 in 1978
8	78.0 in 1919	8	70.7 in 1917	8	7.11 in 1938		0.29 in 1961
9	77.7 in 2020	9	70.9 in 1976	9	6.68 in 1959	9	0.30 in 1920
10	77.3 in 1949	10	71.0 in 1938	10	6.55 in 1915		0.30 in 1907
	77.3 in 1925		71.0 in 1929			...	
...		...				21	0.85 in 2022
94	72.5 in 2022	30	72.5 in 2022				
	72.5 in 1967		72.5 in 1967				
	72.5 in 1954		72.5 in 1954				
	72.5 in 1910		72.5 in 1910				
	72.5 in 1898		72.5 in 1898				

Normal Temperature for October at STLF1 = 74.1°

Normal Rainfall for October at STLF1 = 3.06 inches

TARPON SPRINGS (records began in January 1892):

Warmest Octobers	Coolest Octobers	Wettest Octobers	Driest Octobers
1 81.2 in 1919	1 70.3 in 1987	1 14.13 in 1995	1 0.02 in 2010
2 79.8 in 2019	2 71.0 in 1940	2 12.43 in 1921	2 0.04 in 2000
3 79.7 in 1985	3 71.1 in 1913	3 10.91 in 1938	3 0.06 in 1940
4 79.2 in 2018	4 71.2 in 1974	4 10.33 in 1911	4 0.07 in 1974
5 79.0 in 1941	71.2 in 1943	5 9.49 in 1975	5 0.08 in 1963
6 78.7 in 2007	6 71.5 in 1938	6 9.20 in 1992	6 0.11 in 1961
7 78.5 in 1911	71.5 in 1907	7 8.13 in 1922	7 0.12 in 1942
8 78.2 in 1949	8 71.6 in 1917	8 7.57 in 1917	8 0.25 in 1905
9 78.1 in 2020	71.6 in 1908	9 6.89 in 1936	9 0.31 in 1979
10 77.9 in 1995	71.6 in 1892	10 6.38 in 1968	10 0.34 in 1903
77.9 in 1918	
...	...	91 1.23 in 2022	41 1.23 in 2022
70 74.4 in 2022	58 74.4 in 2022		
74.4 in 1979	74.4 in 1979		

Normal Temperature for October at TRPF1 = 75.6°

Normal Rainfall for October at TRPF1 = 3.19 inches

TAMPA AREA (records began in April 1890):

Warmest Octobers	Coolest Octobers	Wettest Octobers	Driest Octobers
1 81.5 in 2020	1 70.0 in 1891	1 10.33 in 1922	1 Trace in 2010
2 81.1 in 2019	2 70.8 in 1964	2 9.88 in 1921	2 0.02 in 1940
3 80.4 in 2021	3 70.9 in 1976	3 7.36 in 1952	3 0.03 in 1942
80.4 in 1919	4 71.3 in 1987	4 6.94 in 2019	4 0.06 in 2000
5 80.0 in 2018	5 71.7 in 1943	6.94 in 1938	5 0.09 in 1988
6 79.8 in 2007	71.7 in 1913	6 6.26 in 1959	6 0.12 in 1920
7 79.6 in 1959	71.7 in 1908	7 6.21 in 1986	7 0.16 in 1979
8 79.4 in 1941	71.7 in 1903	8 5.67 in 1944	8 0.23 in 1974
9 79.2 in 1985	9 71.8 in 1957	9 5.66 in 1911	9 0.25 in 1961
10 78.8 in 2002	10 72.0 in 1938	10 5.25 in 1924	10 0.29 in 1984
...	0.29 in 1963
59 75.7 in 2022	75 75.7 in 2022	100 1.10 in 2022	34 1.10 in 2022

Normal Temperature for October at TPA = 77.4°

Normal Rainfall for October at TPA = 2.34 inches

ST PETERSBURG AREA (records began in August 1914):

Warmest Octobers	Coolest Octobers	Wettest Octobers	Driest Octobers
1 81.7 in 1985	1 72.3 in 1952	1 17.63 in 1986	1 0.00 in 1942
2 81.5 in 2019	2 73.0 in 1987	2 14.12 in 1952	2 Trace in 2010
3 81.4 in 2021	73.0 in 1938	3 10.05 in 1922	3 0.12 in 2000
81.4 in 1919	4 73.1 in 1964	4 9.55 in 1938	4 0.14 in 1974
5 81.0 in 2018	5 73.2 in 1953	5 9.13 in 1921	5 0.20 in 1998
6 80.6 in 2020	6 73.4 in 1957	6 8.59 in 1959	6 0.23 in 2022
80.6 in 1941	7 73.5 in 1943	7 8.14 in 1918	7 0.29 in 1961
8 80.0 in 2002	73.5 in 1917	8 8.09 in 1944	8 0.30 in 1988
9 79.9 in 1959	9 73.7 in 1920	9 7.17 in 2019	9 0.31 in 1963
10 79.8 in 2013	10 74.0 in 2011	10 6.77 in 1917	10 0.35 in 1940
79.8 in 2007	74.0 in 1956		
79.8 in 2005	74.0 in 1954		
...	...		
64 76.3 in 2022	44 76.3 in 2022		
76.3 in 2008	76.3 in 2008		
76.3 in 1999	76.3 in 1999		

Normal Temperature for October at SPG = 77.8°

Normal Rainfall for October at SPG = 2.16 inches

PLANT CITY (records began in September 1892):

Warmest Octobers	Coolest Octobers	Wettest Octobers	Driest Octobers
1 81.2 in 2019	1 69.8 in 1940	1 10.43 in 1959	1 0.04 in 2000
2 80.8 in 2020	2 70.0 in 1930	2 9.01 in 1938	2 0.09 in 1940
3 79.9 in 2018	3 70.2 in 1943	3 8.05 in 1924	3 0.10 in 2010
4 79.1 in 2021	70.2 in 1929	4 7.32 in 2019	4 0.14 in 1963
5 78.9 in 1959	5 70.6 in 2000	5 7.18 in 1917	5 0.16 in 1979
6 78.8 in 1985	70.6 in 1987	6 6.86 in 1975	6 0.21 in 1907
7 78.5 in 1918	70.6 in 1938	7 6.66 in 1952	7 0.26 in 2018
8 78.0 in 2007	8 71.1 in 1913	8 6.43 in 1898	8 0.28 in 1988
78.0 in 1941	9 71.2 in 1909	9 6.32 in 1969	9 0.29 in 1961
10 77.9 in 2002	10 71.3 in 1944	10 5.62 in 1986	10 0.33 in 2022
	71.3 in 1942		
...	...		
55 74.5 in 2022	57 74.5 in 2022		

Normal Temperature for October at PLCF1 = 76.7°

Normal Rainfall for October at PLCF1 = 2.58 inches

LAKELAND AREA (records began in January 1915):

Warmest Octobers	Coolest Octobers	Wettest Octobers	Driest Octobers
1 80.4 in 2019	1 70.9 in 1976	1 9.19 in 2005	1 0.00 in 2010
2 80.1 in 2020	2 71.0 in 1943	2 7.73 in 1922	2 0.04 in 1974
3 79.9 in 1985	3 71.2 in 1964	3 6.93 in 1917	3 0.11 in 1973
4 79.3 in 2018	4 71.8 in 1974	4 6.72 in 1952	4 0.16 in 2000
5 78.8 in 1941	71.8 in 1957	5 6.63 in 1959	5 0.18 in 1940
78.8 in 1919	71.8 in 1938	6 6.50 in 2011	6 0.19 in 1935
7 78.6 in 2009	7 71.9 in 1930	7 6.29 in 1938	7 0.23 in 1978
78.6 in 1959	8 72.0 in 1924	8 6.23 in 1982	8 0.25 in 1942
9 78.5 in 2007	9 72.1 in 1952	9 6.19 in 2019	9 0.29 in 1926
10 78.4 in 2021	10 72.2 in 1967	10 6.00 in 2007	10 0.33 in 1963
	72.2 in 1953		11 0.41 in 2022
	72.2 in 1944		0.41 in 1934
...	...		
57 75.0 in 2022	49 75.0 in 2022		
75.0 in 1917	75.0 in 1917		

Normal Temperature for October at LLDF1 = 76.4°

Normal Rainfall for October at LLDF1 = 3.04 inches

WINTER HAVEN AREA (records began in March 1941):

Warmest Octobers	Coolest Octobers	Wettest Octobers	Driest Octobers
1 82.2 in 2019	1 70.9 in 1987	1 9.43 in 1952	1 0.02 in 2010
2 80.7 in 2020	2 71.7 in 1977	2 9.42 in 1959	2 0.16 in 2000
3 80.4 in 2018	3 72.2 in 1976	3 8.00 in 2011	3 0.17 in 2004
4 79.3 in 1971	72.2 in 1943	4 7.60 in 1950	4 0.19 in 1998
5 79.2 in 2021	5 72.6 in 2011	5 7.15 in 1956	5 0.43 in 2009
6 79.0 in 1985	72.6 in 1974	6 6.90 in 1944	0.43 in 1974
7 78.9 in 2007	7 73.0 in 1958	7 6.77 in 1995	7 0.46 in 1963
78.9 in 1959	73.0 in 1957	8 6.47 in 2005	8 0.55 in 1989
9 78.7 in 2002	9 73.1 in 2000	9 6.13 in 2002	9 0.61 in 2015
10 78.5 in 1995	73.1 in 1944	10 5.66 in 1969	0.61 in 1942

Average Temperature for October 2022 = Most days missing/unrepresentative

Normal Temperature for October at GIF = 77.1°

Total Rainfall for October 2022 = Several days missing

Normal Rainfall for October at GIF = 2.22 inches

BARTOW (records began in June 1892):

Warmest Octobers	Coolest Octobers	Wettest Octobers	Driest Octobers
1 79.8 in 2013	1 70.6 in 1913	1 12.55 in 1910	1 0.00 in 2000
2 79.6 in 2019	2 71.2 in 1894	2 10.22 in 1924	2 0.13 in 1940
3 79.3 in 1919	3 71.3 in 1940	3 9.10 in 1959	3 0.20 in 2013
4 79.1 in 2007	71.3 in 1892	4 8.98 in 1952	0.20 in 1963
5 79.0 in 2020	5 71.4 in 1977	5 8.75 in 2011	5 0.23 in 1998
6 78.9 in 1959	6 71.5 in 1976	6 8.43 in 1917	6 0.30 in 2010
7 78.8 in 2002	7 71.7 in 1929	7 8.18 in 1922	7 0.31 in 1974
8 78.4 in 1911	8 71.9 in 2011	8 7.90 in 1894	8 0.34 in 1973
9 78.3 in 2018	9 72.0 in 1895	9 7.40 in 1938	9 0.36 in 1901
78.3 in 2009	10 72.1 in 1924	10 7.26 in 1950	10 0.37 in 1942
78.3 in 1902	72.1 in 1920		11 0.39 in 1907
...	...		12 0.42 in 1981
82 73.9 in 2022	34 73.9 in 2022		13 0.44 in 1984
73.9 in 1972	73.9 in 1972		14 0.50 in 2004
73.9 in 1958	73.9 in 1958		15 0.54 in 1935
73.9 in 1914	73.9 in 1914		16 0.59 in 2022
73.9 in 1910	73.9 in 1910		

Normal Temperature for October at BARF1 = 75.5°

Normal Rainfall for October at BARF1 = 3.03 inches

SARASOTA-BRADENTON AREA (records began in January 1911):

Warmest Octobers	Coolest Octobers	Wettest Octobers	Driest Octobers
1 82.7 in 2019	1 70.6 in 1976	1 12.50 in 1952	1 0.00 in 1942
2 81.2 in 2020	2 71.0 in 1943	2 12.02 in 1922	2 Trace in 2010
3 80.4 in 2007	3 71.2 in 1940	3 10.48 in 1938	3 0.02 in 1963
4 79.5 in 1959	4 71.4 in 1913	4 7.31 in 1918	4 0.04 in 1973
5 79.2 in 2016	5 71.5 in 1977	5 7.23 in 1957	5 0.10 in 2000
79.2 in 1919	6 71.6 in 1987	6 7.22 in 1924	0.10 in 1940
7 79.0 in 2021	7 71.7 in 1930	7 7.21 in 1921	7 0.31 in 1920
8 78.9 in 2018	8 71.8 in 1938	8 7.11 in 1990	8 0.44 in 1974
78.9 in 1985	71.8 in 1929	9 7.09 in 1993	9 0.45 in 1984
10 78.5 in 1941	10 72.0 in 1944	10 6.74 in 2007	10 0.53 in 1979
...
59 75.3 in 2022	53 75.3 in 2022	70 1.78 in 2022	42 1.78 in 2022
		1.78 in 1962	1.78 in 1962

Normal Temperature for October at SRQ = 77.3°

Normal Rainfall for October at SRQ = 2.76 inches

VENICE (records began in May 1955):

Warmest Octobers	Coolest Octobers	Wettest Octobers	Driest Octobers
1 81.5 in 2019	1 70.8 in 1987	1 12.83 in 1995	1 0.00 in 2010
2 80.4 in 2009	2 71.4 in 1976	2 9.90 in 2005	2 0.08 in 1981
3 79.5 in 2021	3 72.1 in 1974	3 9.61 in 1959	3 0.09 in 1963
79.5 in 2002	4 72.2 in 1977	4 8.48 in 1982	4 0.18 in 2000
5 79.2 in 2018	5 73.0 in 1968	5 7.78 in 1986	5 0.20 in 1974
79.2 in 1959	6 73.3 in 1957	6 7.73 in 1967	6 0.36 in 1998
7 79.0 in 2020	7 73.6 in 2008	7 7.45 in 1993	7 0.56 in 1970
79.0 in 2012	73.6 in 2000	8 6.65 in 1983	8 0.69 in 2022
79.0 in 1998	9 74.1 in 1964	9 6.39 in 1969	9 0.72 in 2003
79.0 in 1985	10 74.4 in 1967	10 6.21 in 1958	10 0.73 in 1973
...	...		
38 75.6 in 2022	24 75.6 in 2022		

Normal Temperature for October at VNCF1 = 76.6°

Normal Rainfall for October at VNCF1 = 3.35 inches

MYAKKA RIVER STATE PARK (Temperature records began in March 1956
and Rainfall records began in Sep 1943):

Warmest Octobers	Coolest Octobers	Wettest Octobers	Driest Octobers
1 80.9 in 2019	1 71.5 in 1987	1 10.01 in 1951	1 0.00 in 2010
2 79.9 in 2007	2 72.0 in 1992	2 9.32 in 1952	0.00 in 1974
3 79.5 in 2018	3 72.5 in 1977	3 8.59 in 1995	3 0.10 in 2000
79.5 in 1985	72.5 in 1957	4 7.70 in 1959	4 0.30 in 1963
5 79.0 in 1991	5 72.6 in 1976	5 6.98 in 2019	5 0.44 in 1973
6 78.9 in 2020	6 72.8 in 1963	6 6.81 in 1999	6 0.61 in 1978
78.9 in 1998	7 73.2 in 1974	7 6.65 in 2005	0.61 in 1977
8 78.1 in 1975	8 73.5 in 1958	8 6.54 in 1994	8 0.85 in 1962
9 78.0 in 1959	9 73.6 in 1962	9 6.40 in 1943	9 1.01 in 1955
10 77.9 in 1990	10 73.7 in 2011	10 6.29 in 1957	10 1.03 in 1980
77.9 in 1983			

Average Temperature for October 2022 = Numerous Days Missing

Normal Temperature for October at MKCF1 = 76.3

Total Rainfall for October 2022 = Numerous Days Missing

Normal Rainfall for October at MKCF1 = 3.19 inches

WAUCHULA 2 N (records began in January 1933):

Warmest Octobers	Coolest Octobers	Wettest Octobers	Driest Octobers
1 80.8 in 2007	1 70.6 in 1943	1 10.36 in 1975	1 0.00 in 2000
2 79.8 in 2009	2 71.2 in 2011	2 9.67 in 1952	2 Trace in 1940
3 79.4 in 1985	3 71.4 in 2000	3 9.38 in 1938	3 0.10 in 1974
4 79.3 in 2019	4 71.8 in 1987	4 8.64 in 1995	4 0.22 in 1981
79.3 in 1941	71.8 in 1944	5 8.27 in 2011	5 0.27 in 1963
6 78.8 in 2020	6 71.9 in 2010	6 6.85 in 1950	6 0.36 in 1984
78.8 in 1959	7 72.0 in 1954	7 6.21 in 1953	7 0.45 in 1979
8 78.3 in 1936	8 72.2 in 1977	8 5.61 in 1999	8 0.53 in 2006
9 78.0 in 2018	72.2 in 1953	9 5.55 in 2005	9 0.57 in 2021
10 77.7 in 1939	10 72.4 in 1964	5.55 in 1945	0.57 in 1961
...
54 74.1 in 2022	31 74.1 in 2022		21 1.04 in 2022

Normal Temperature for October at WAUF1 = 75.3

Normal Rainfall for October at WAUF1 = 3.09 inches

ARCHBOLD BIO STN (records began in January 1969):

Warmest Octobers	Coolest Octobers	Wettest Octobers	Driest Octobers
1 79.3 in 2019	1 71.9 in 1977	1 9.24 in 2005	1 0.00 in 2010
2 79.0 in 2020	2 72.0 in 1987	2 8.40 in 1969	2 0.13 in 1984
79.0 in 2007	72.0 in 1976	3 7.19 in 2017	3 0.25 in 2003
4 77.9 in 1995	4 72.4 in 2011	4 7.15 in 1995	4 0.40 in 1980
77.9 in 1985	5 72.5 in 2010	5 6.95 in 1993	5 0.47 in 2009
6 77.8 in 2018	72.5 in 2000	6 6.89 in 2011	6 0.53 in 1990
7 77.0 in 2016	72.5 in 1992	7 6.63 in 1987	7 0.56 in 1974
8 76.8 in 2015	8 72.6 in 1988	8 5.18 in 1983	8 0.68 in 1997
9 76.7 in 2009	9 72.7 in 2008	9 4.68 in 2001	9 0.69 in 2022
76.7 in 2002	10 72.9 in 1997	10 4.52 in 2015	10 0.76 in 2018
76.7 in 1975			
...	...		
41 73.7 in 2022	13 73.7 in 2022		
73.7 in 2022	73.7 in 2022		

Normal Temperature for October at ACHF1 = 75.7°

Normal Rainfall for October at ACHF1 = 3.41 inches

PUNTA GORDA AREA (records began in May 1914):

Warmest Octobers	Coolest Octobers	Wettest Octobers	Driest Octobers
1 80.9 in 2020	1 72.9 in 1976	1 13.99 in 1924	1 0.00 in 1942
2 80.6 in 2019	2 73.0 in 1938	2 12.21 in 1959	2 Trace in 1940
80.6 in 1949	3 73.1 in 1987	3 11.60 in 1952	3 0.01 in 2010
4 80.4 in 1951	73.1 in 1940	4 10.88 in 1995	4 0.10 in 1981
5 80.3 in 1959	5 73.3 in 1974	5 10.03 in 1951	5 0.16 in 1973
6 80.1 in 2018	73.3 in 1930	6 9.64 in 1945	6 0.26 in 1961
7 80.0 in 1985	7 73.4 in 1929	7 9.18 in 1922	7 0.33 in 2022
8 79.9 in 2007	8 73.5 in 2000	8 8.86 in 1996	8 0.45 in 2003
9 79.8 in 1919	73.5 in 1977	9 8.20 in 1953	9 0.56 in 1974
10 79.6 in 1960	10 73.7 in 1917	10 8.05 in 1932	10 0.63 in 1979
...	...		
57 76.4 in 2022	46 76.4 in 2022		
76.4 in 2003	76.4 in 2003		
76.4 in 1956	76.4 in 1956		

Normal Temperature for October at PGD = 77.2°

Normal Rainfall for October at PGD = 3.02 inches

FORT MYERS AREA (records began in January 1902):

Warmest Octobers	Coolest Octobers	Wettest Octobers	Driest Octobers
1 82.9 in 2019	1 72.5 in 1903	1 19.70 in 1924	1 0.05 in 1963
2 81.7 in 1985	2 72.6 in 1976	2 12.04 in 1959	2 0.16 in 1973
3 81.2 in 2021	3 73.3 in 1913	3 11.91 in 1951	3 0.19 in 1974
4 81.1 in 2007	4 73.5 in 1953	4 11.08 in 1922	4 0.30 in 1935
5 80.4 in 2020	5 73.6 in 1957	5 11.03 in 1969	5 0.39 in 1979
80.4 in 1919	73.6 in 1908	6 10.80 in 1921	6 0.40 in 1988
7 80.0 in 1995	7 73.7 in 1943	7 10.73 in 2011	0.40 in 1981
80.0 in 1959	8 74.0 in 1977	8 9.26 in 1910	8 0.43 in 1977
9 79.8 in 1981	74.0 in 1920	9 8.34 in 1952	9 0.45 in 2010
10 79.5 in 2018	10 74.1 in 1940	10 8.17 in 2005	10 0.50 in 1942
	74.1 in 1910
...	...	88 1.59 in 2022	33 1.59 in 2022
40 78.1 in 2022	80 78.1 in 2022	1.59 in 1934	1.59 in 1934
78.1 in 1978	78.1 in 1978		
78.1 in 1966	78.1 in 1966		

Normal Temperature for October at FMY = 78.0°

Normal Rainfall for October at FMY = 3.08 inches

For more Climate information, visit our web page at the following link:
<https://www.weather.gov/tampabay> and then go to the Climate and Past Weather
drop down menu above the graphical forecast images.