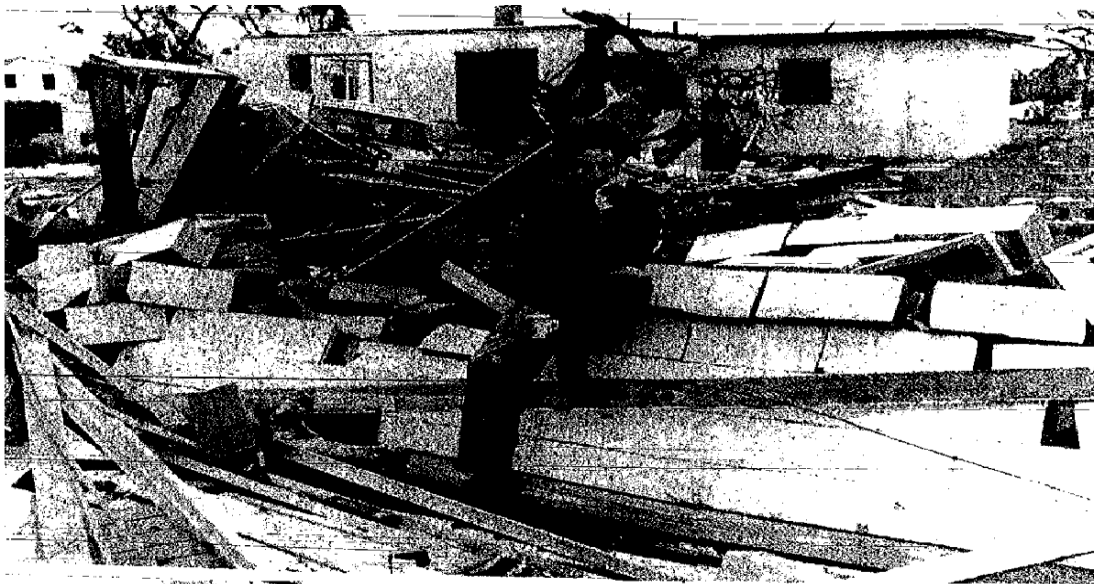




Killer Tornadoes Leave a Path of Destruction across Central Florida for over 100 Miles in 1966

Fact Sheet

- Date: April 4, 1966
- Time: 820 am
- Estimated Tornado Intensity: F4
- Estimated Maximum Wind: 207-260 mph
- Tornado Width (Yards): 300
- Path Length (Miles): f100
- Deaths: 11
- Injuries: 3350
- Damage Amount: 50 M+
- Number of Homes Damages: 279 homes+,
1 school, 1 restaurant, and many trailers
- County: Pinellas, Hillsborough, & Polk



—Staff Color Photo by Bob Moreland

A resident devastated by all the damages to his community
St Petersburg Times



Toll in Millions; Tampa, Polk Disaster Areas

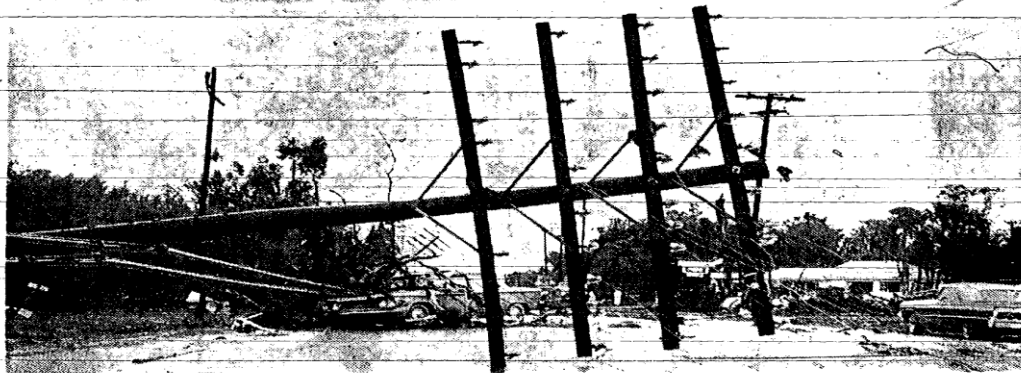
By JOHN FRASCA
Tribune Staff Writer

Black, deadly tornadoes spawned by a treacherous line of squalls out of the Gulf of Mexico devastated huge sections of Central Florida yesterday, killing at least nine persons, injuring hundreds of others and causing "millions upon millions of dollars" in property damage.

Tampa Tribune

THE TAMPA TRIBUNE, Tuesday, April 5, 1966

Tampa Badly Mauled In Furious Winds



Downed Telephone Pole Provides Formidable Barrier on North Florida

... screens wrecked automobile which fell victim to a falling tree.

Tampa Tribune

AT LEAST 250 INJURED IN FLORIDA

St Petersburg Times

NOAA AND THE PRESERVE

AMERICA

Initiative



Walls collapsed on this house during the tornadoes fury
Tampa Tribune

Summary of event:

It was just another morning on April 5, 1966 when a severe thunderstorm changed many lives throughout Pinellas and Hillsborough counties. Many people were just getting to work or school while other residents were just waking up. The severe thunderstorm spawned several twisters. One twister had a path length that traveled up to 47 miles. **The twisters did a deadly hopscotch across a 40-mile-wide band across the middle of Florida. Many of the homes rammed by the swirling wind funnels were destroyed or were so damaged they could not be inhabited (St Petersburg Times, April 5th, Section 14-A).**

Detailed experience:

Carrollwood subdivision and the University of South Florida in Tampa were the most devastated areas. **The twister was not selective in its targets as homes in the Carrollwood subdivision and Forrest Hills area were belted (St Petersburg Times, April 5th, Section 14-A).** Carrollwood homes are very fine and elegant modeled homes. **Some of the larger colonial style homes in Carrollwood were demolished. One observer, Tim Waggoner, said he saw one home where the furniture was literally “sucked” out of the home (St Petersburg Times,**



April 5th, Section 14-A). The twister did a tremendous amount of damage. **Some buildings were crushed by the twister – crushed as if a giant sledge hammer had been at work on the building (St Petersburg Times, April 5th, Section 14-A).**

In another area of Tampa, there were two boys visiting their aunt from Chicago. The grandsons of Mrs. Sparkman were very scared when the tornado hit her ranch home. **Mrs. Sparkman was standing in the living room and the boys were in the bedroom hall. The house shook. “I thought it was just hail hitting the windows then glass and wood just came through the house,” Mrs. Sparkman remembers. “The two boys ran to me and I tried to get them under the bed but glass was flying so hard I just grabbed them and held them close to me.” Every window in the house was smashed. Bits of glass and wood were imbedded in the walls. “It only lasted five minutes at the most,” Mrs. Sparkman recalls. In the five minutes a roof of another home was blown through the front of the Sparkman house splintering the cement blocks and knocking the inside doors off their hinges (Tampa Tribune, April 5th, Section A-6).**

Unfortunately there were several deaths that the twister caused. The death toll was not very high though at eleven deaths. **Officials wondered why the death toll was not higher after viewing the overturned automobiles and houses smashed like eggs. They predicted it will be days before damage estimates will be accurately totaled and months before things return to normal in many Florida neighborhoods (St Petersburg Times, April 5th, Section 14-A).** Another area that was impacted was Auburndale, Florida. **One citrus grove section four miles long and one mile wide was stripped. “The ground was yellow and the trees were bare,” said one observer. “You couldn’t walk without stepping on them (trees)” (St Petersburg Times, April 5th, Section 14-A).** While in Lakeland, which is located in Polk County, an observer witnessed **a 55-foot radio tower that was yanked out of its concrete pilings and smashed to the ground (St Petersburg Times, April 5th, Section 14-A).**

Although, the twister did an extensive amount of damage and there were numerous deaths many people did survive to tell the story of the 1966 twister that came through their houses and schools that morning.

Carrollwood Subdivision Hard Hit

Storm Claws Through North Tampa Homes

Tampa Tribune

NOAA AND THE PRESERVE

AMERICA

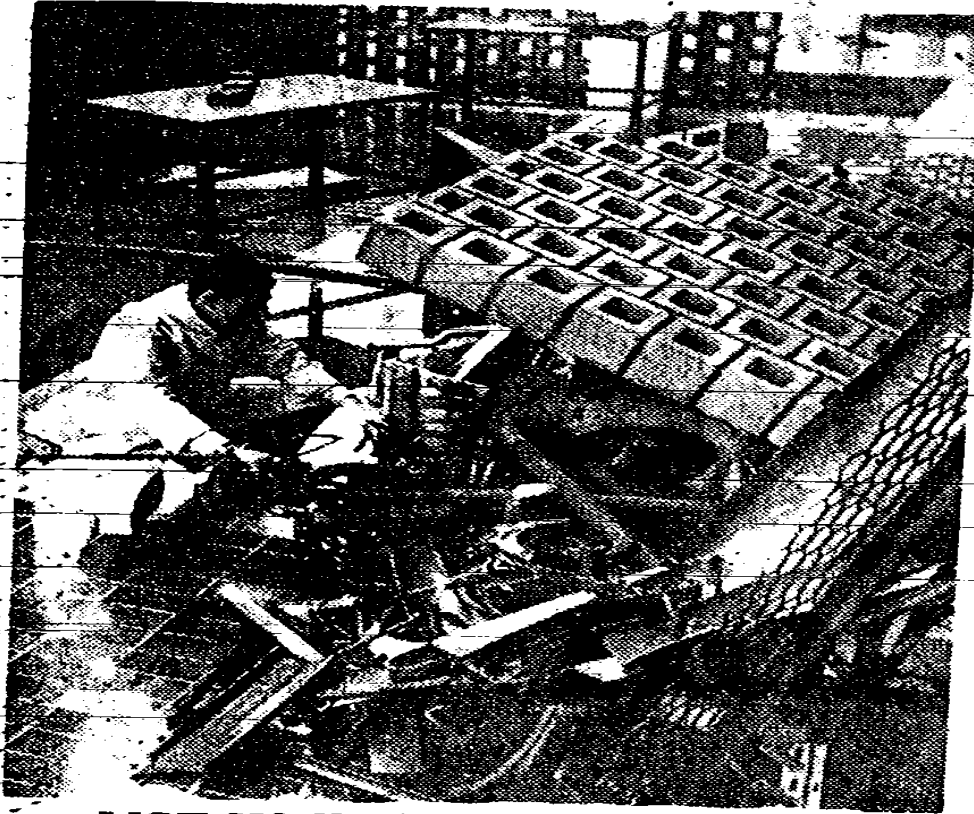
Initiative



—Staff Photo by Ed Sessions

What Once Had Been Two Separate Houses Suddenly Becomes One Huge Pile of Rubble

Tampa Tribune



USF Wall, Art Work Crushed

... Ron Bouverat views remains of his 'junk metal' creation.

Storm Whips Through USF Causing Extensive Damage

By NORMA JEAN HILL
Tribune Staff Writer

Yesterday's tornado churned through the University of

The injured worker was identified as Frank Farrabee. According to reports, he was blown off the second floor of

Tampa Tribune

NOAA AND THE PRESERVE

AMERICA

Initiative



Anxious Relatives Inquire of School Children

... pupils escaped serious injury when wind dumped bus on Dale Mabry.

Tampa Tribune

NOAA AND THE PRESERVE

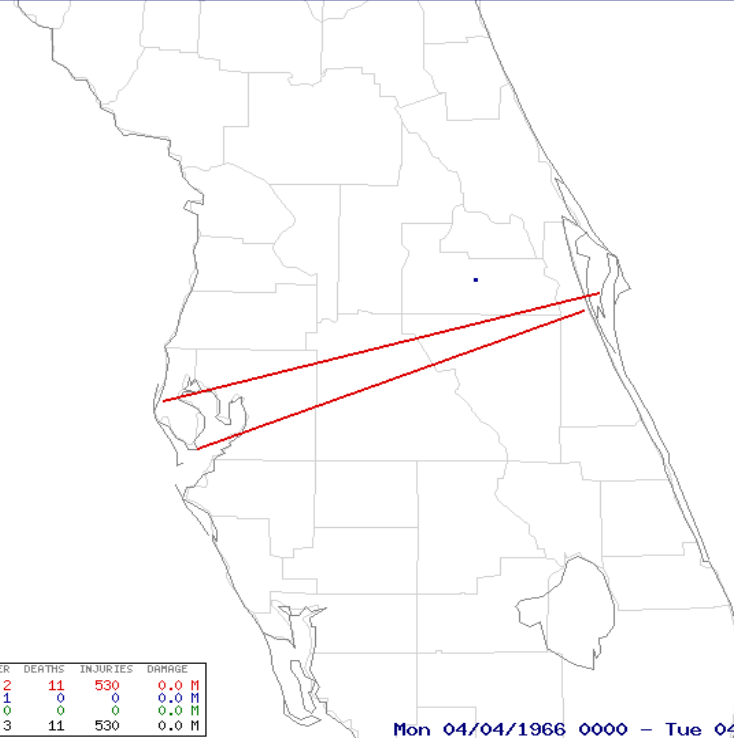
AMERICA

Initiative



Severe Thunderstorm Event Database

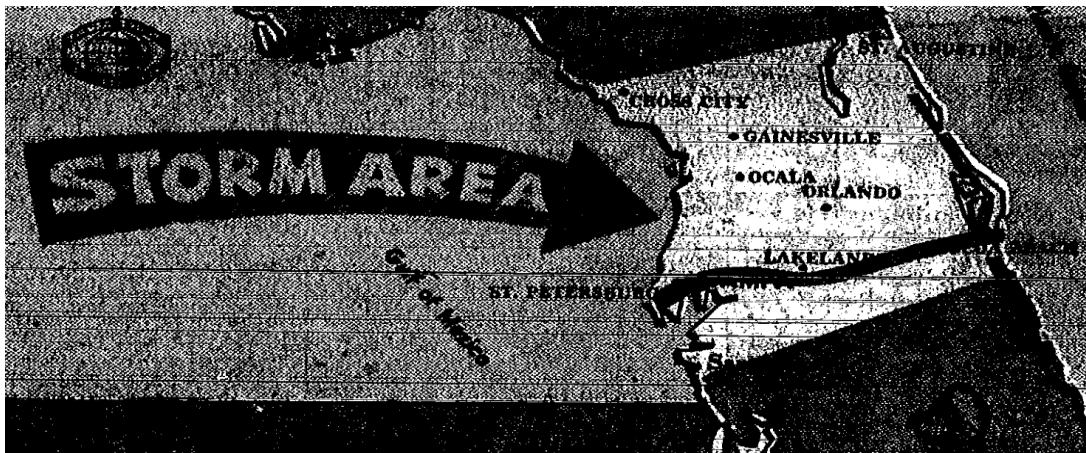
NOAA/NWS/NCEP/Storm Prediction Center



RPT TYPE	NUMBER	DEATHS	INJURIES	DAMAGE
TORNADOES:	2	11	530	0.0 M
WIND:	1	0	0	0.0 M
HAIL:	0	0	0	0.0 M
TOTAL:	3	11	530	0.0 M

Mon 04/04/1966 0000 - Tue 04/05/1966 0000 UTC

The path the storm took across Florida
NOAA Data



Area where the storm crossed
Tampa Tribune



Hillsborough Tornado Situation at a Glance

Number dead—3.

Total area affected—15 square miles.

Number of people affected—4,240.

Number given emergency medical treatment:

St. Joseph's Hospital—30.

Tampa General Hospital—49.

Good Samaritan Hospital—12.

Number admitted to hospitals:

St. Joseph's—15

Tampa General—17

Good Samaritan—1

Homes destroyed—159 (estimated).

Homes with major damage—201 (estimated).

Home trailers destroyed—15 (estimated).

Telephones out of service—10,000.

Electric power circuits out—33,000.

Estimated numbers from the storm

Tampa Tribune