



Synopsis

October 2019 temperatures were cooler than normal, with the northeast especially chilly. Precipitation was mixed with the northwest much drier than normal, the southeast much wetter than normal, while central areas were near normal. The month began with heavy rain across Chaves and Roosevelt Counties on the 1st and 3rd. The 4.83 inches of rain that fell on Roswell in October was the 4th wettest on record! The first snow events occurred later in the month, on the 24th to 25th and 28th to 29th. Both produced minor snow accumulations away from the mountains. The system on the 24th produced accumulations in the Sangre de Cristo Mountains and northeast, while the 28th storm impacted the northwest plateau to the northern mountains.

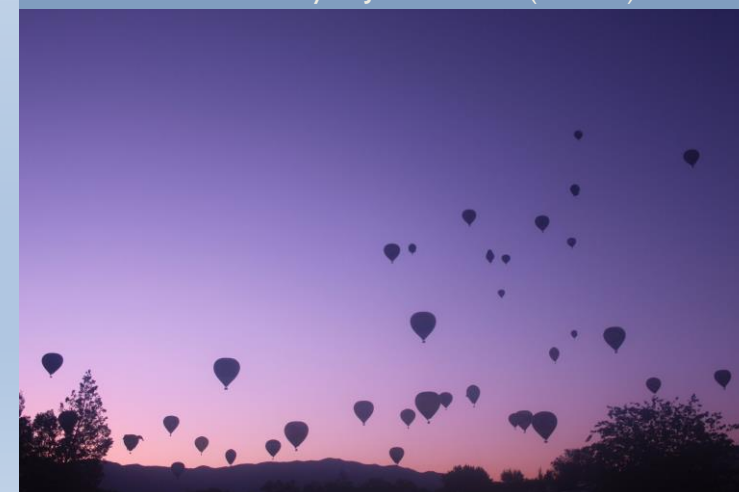
Fall along the Rio Grande | October 25, 2019
Photo via Twitter @Jaywc1



Fiery October Sunset (ABQ) | October 1, 2019
Photo via John M. Valdez



Morning Sunrise Launch over ABQ | October 7, 2019
Photo Courtesy of Jess K. Miller (Twitter)



Morning Sunrise over ABQ | October 19, 2019
Photo Courtesy of John Valdez



October 2019 Climate Summary

State Temperatures

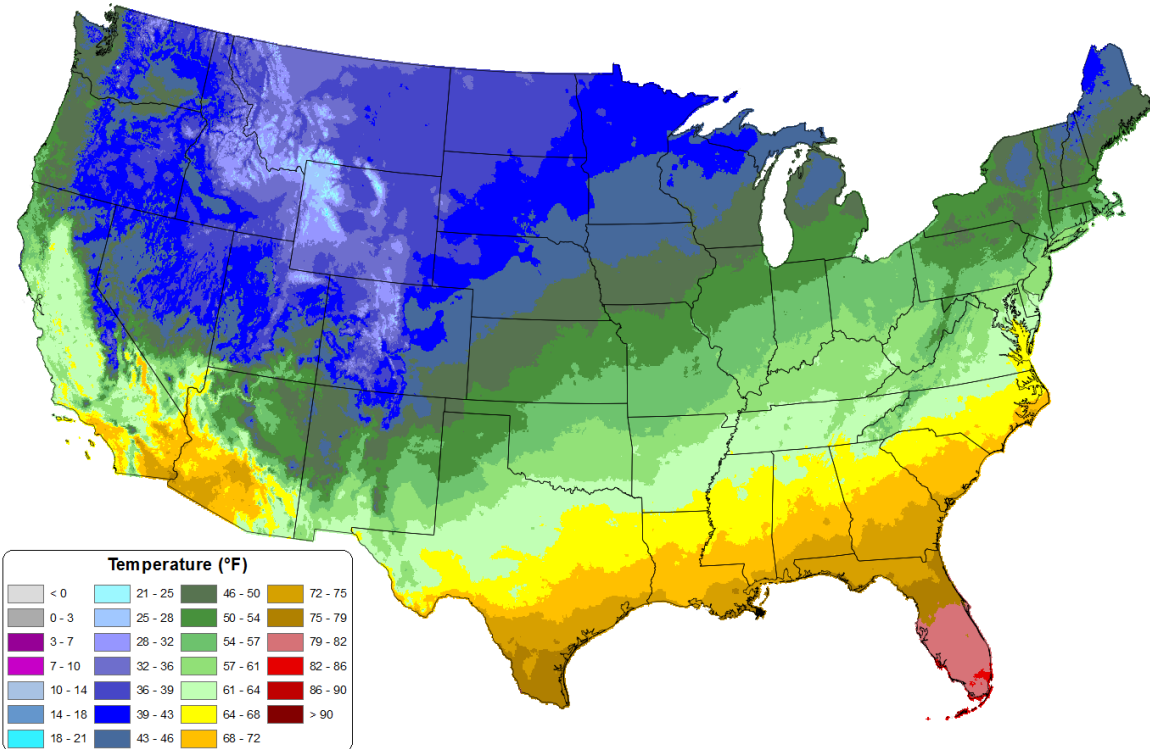
Weather Forecast Office
Albuquerque, NM

Issued November 8, 2019 9:12 AM MDT



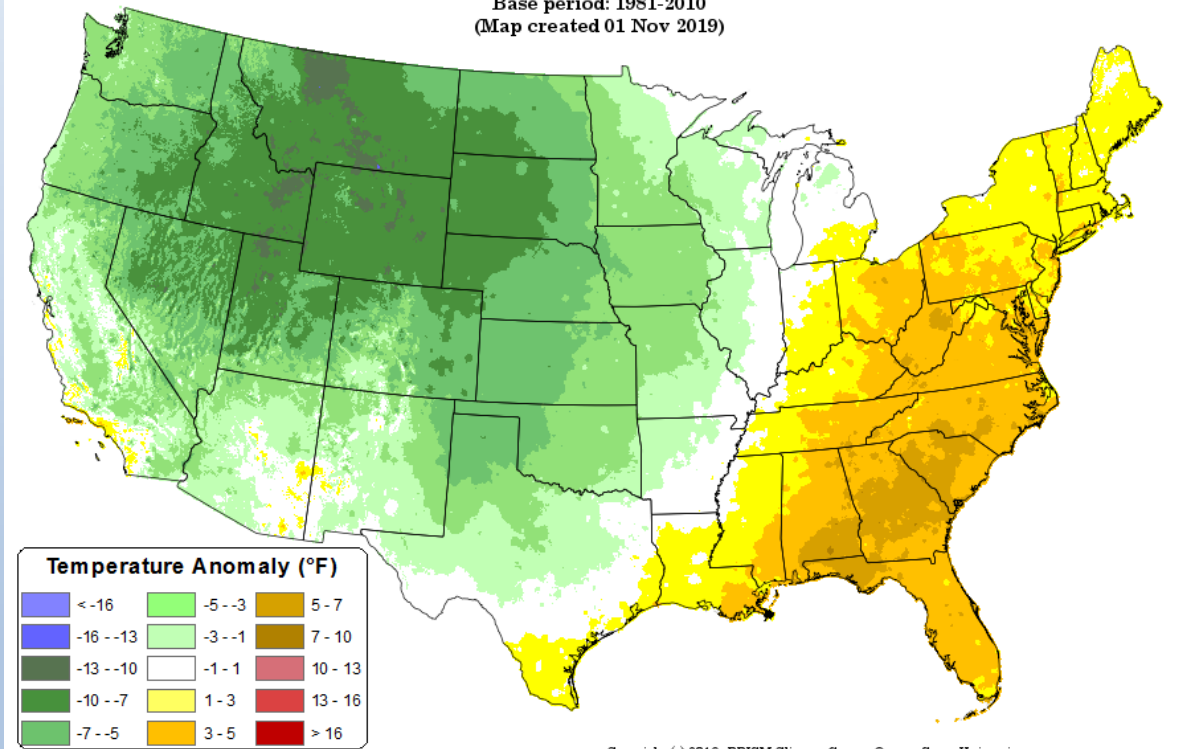
Actual

Average Daily Mean Temperature: 01 Oct 2019 - 31 Oct 2019
Period ending 7 AM EST 31 Oct 2019
(Map created 01 Nov 2019)



Anomaly

Daily Mean Temperature Anomaly: 01 Oct 2019 - 31 Oct 2019
Period ending 7 AM EST 31 Oct 2019
Base period: 1981-2010
(Map created 01 Nov 2019)

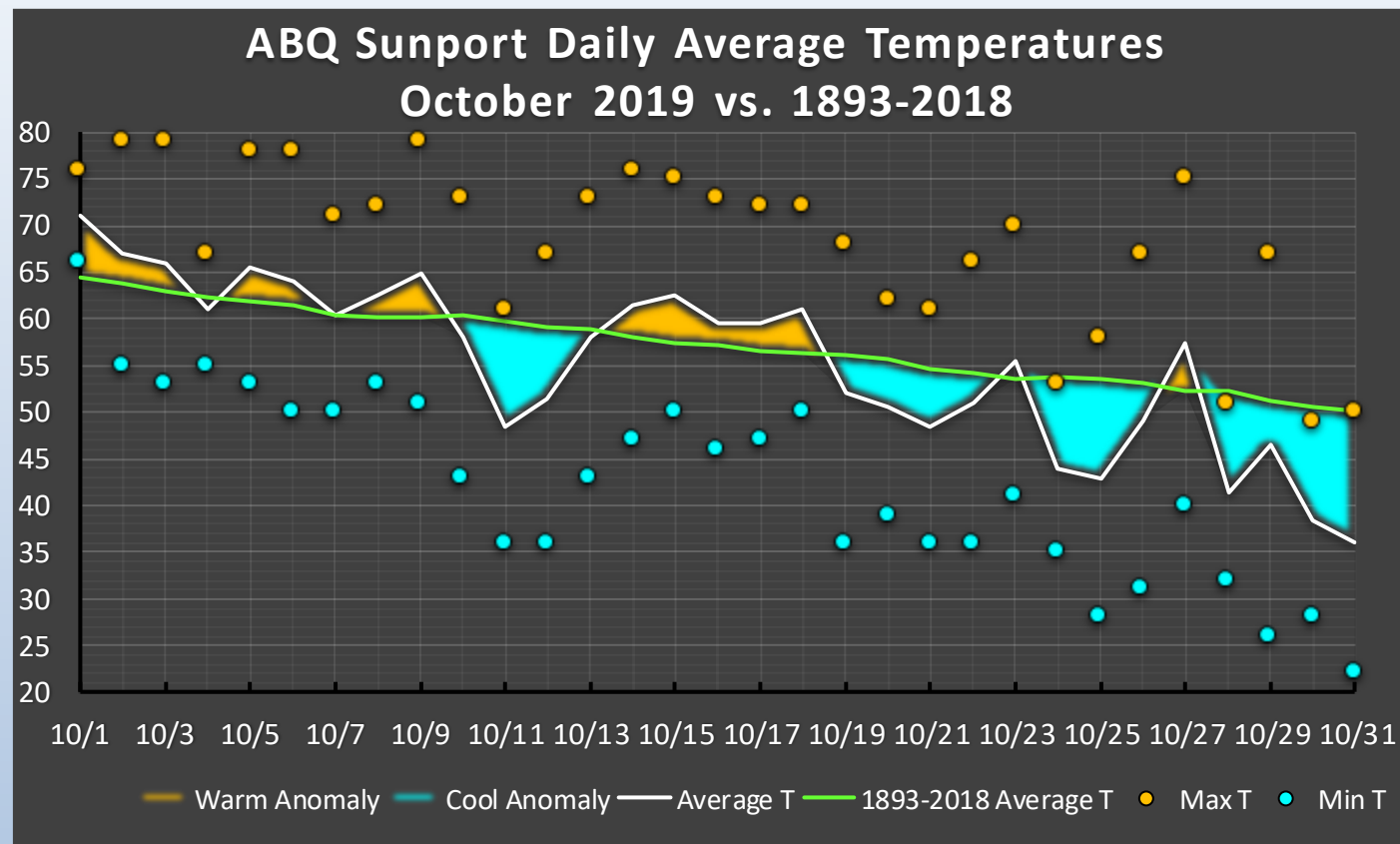


October 2019 Climate Summary

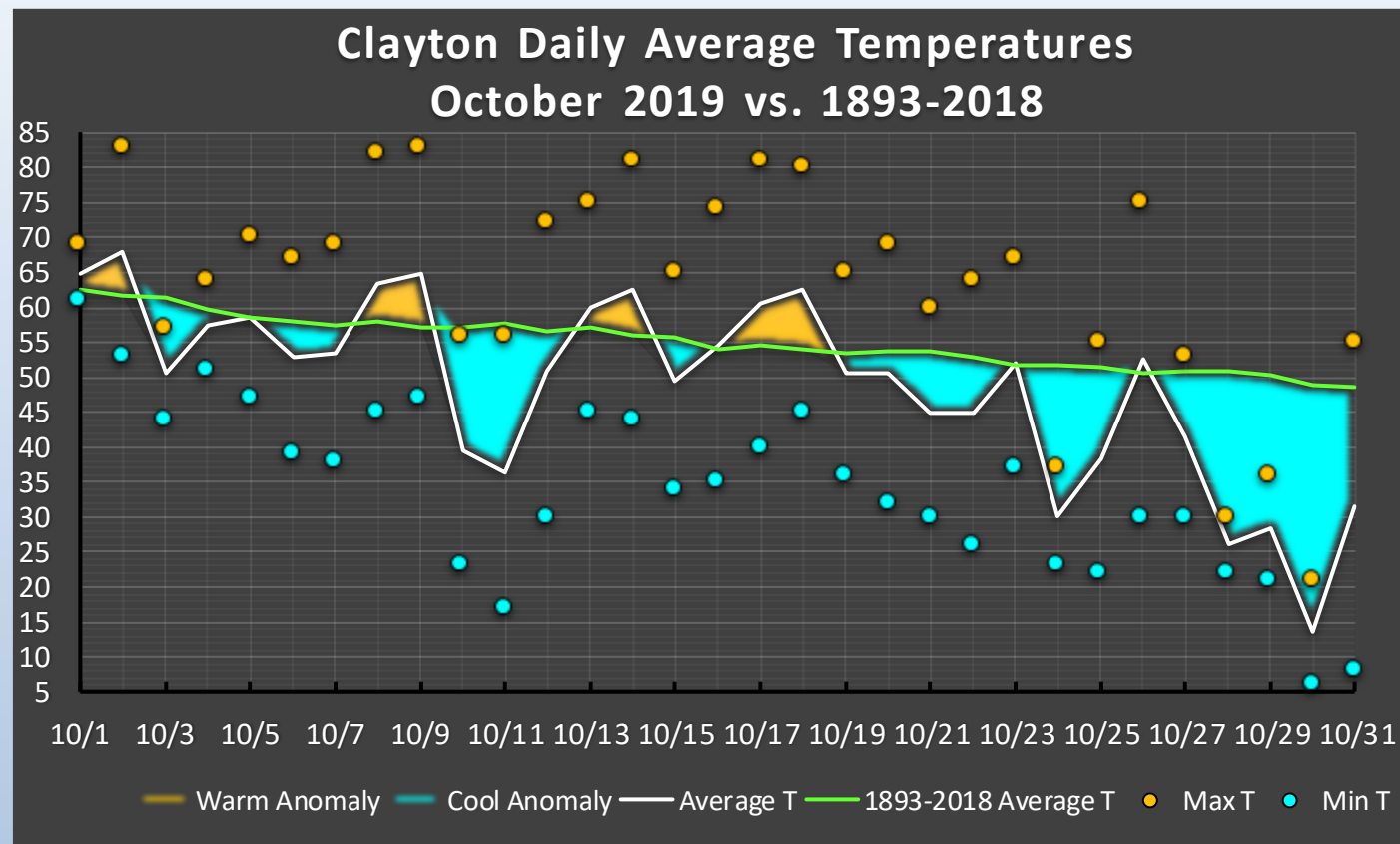
Albuquerque Sunport Temperatures

Weather Forecast Office
Albuquerque, NM

Issued November 8, 2019 9:12 AM MDT



The average temperature for Albuquerque was 55.4°, which was 2.1° below the normal of 57.5°. The average maximum temperature for the month was 68.3°. This was 0.7° below the normal average maximum temperature of 69.0°. The average minimum temperature for the month was 42.4°. This was 3.7° below the normal average minimum temperature of 46.1°.



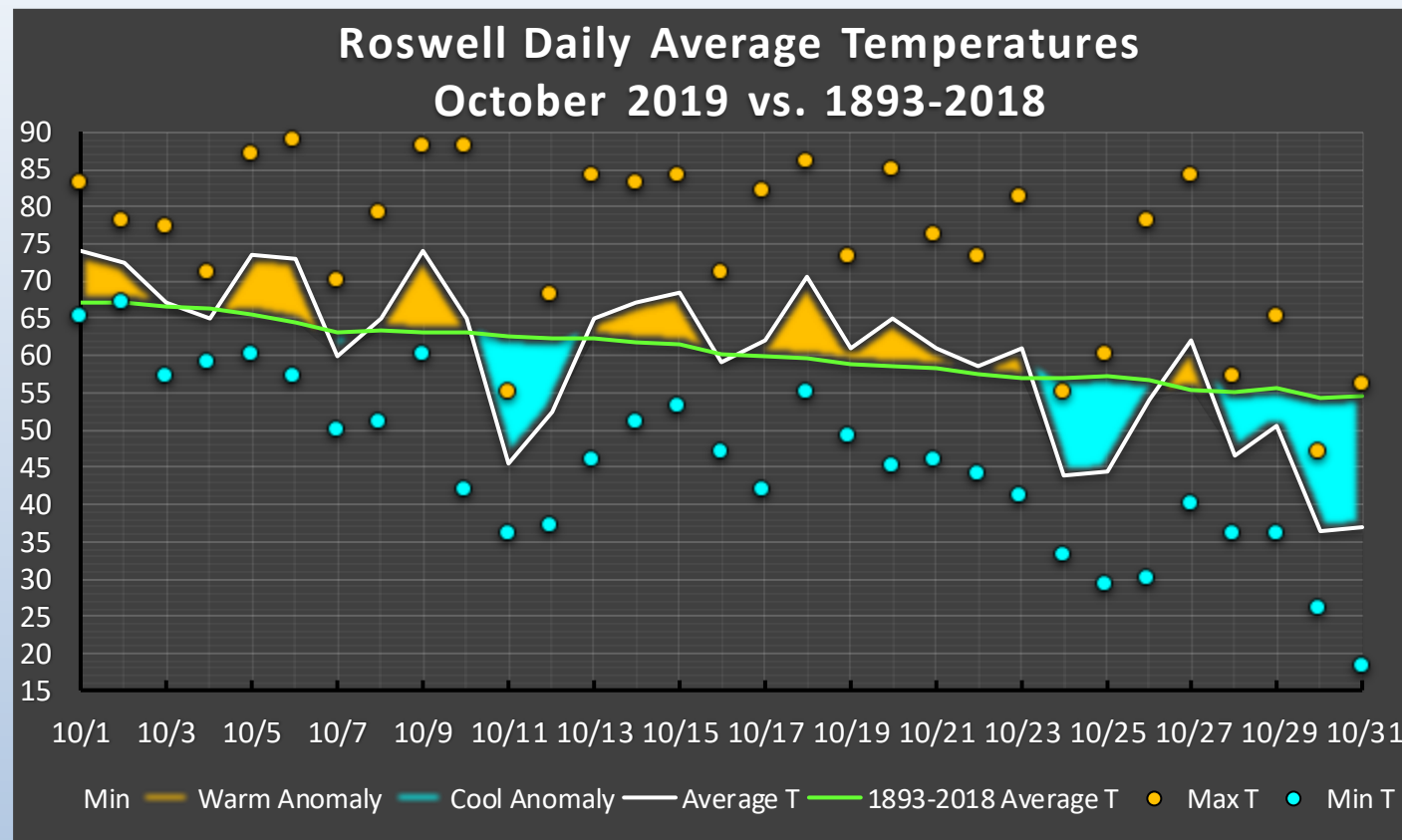
The average temperature for Clayton was 48.7°, which was 6.1° below the normal of 54.8°. This ranks as the 4th coldest October on record. The average maximum temperature for the month was 63.3°. This was 5.2° below the normal average maximum temperature of 68.5°. The average minimum temperature for the month was 34.2°. This was 6.9° below the normal average minimum temperature of 41.1°.

October 2019 Climate Summary

Roswell Temperatures

Weather Forecast Office
Albuquerque, NM

Issued November 8, 2019 9:12 AM MDT



The average temperature for Roswell was 60.0°, which was 1.1° below the normal of 61.1°. The average maximum temperature for the month was 74.6°. This was 1.1° below the average maximum temperature of 75.7°. The average minimum temperature for the month was 45.4°. This was 1.1° below the normal average minimum temperature of 46.5°.

October 2019 Climate Summary

State Precipitation

Weather Forecast Office
Albuquerque, NM

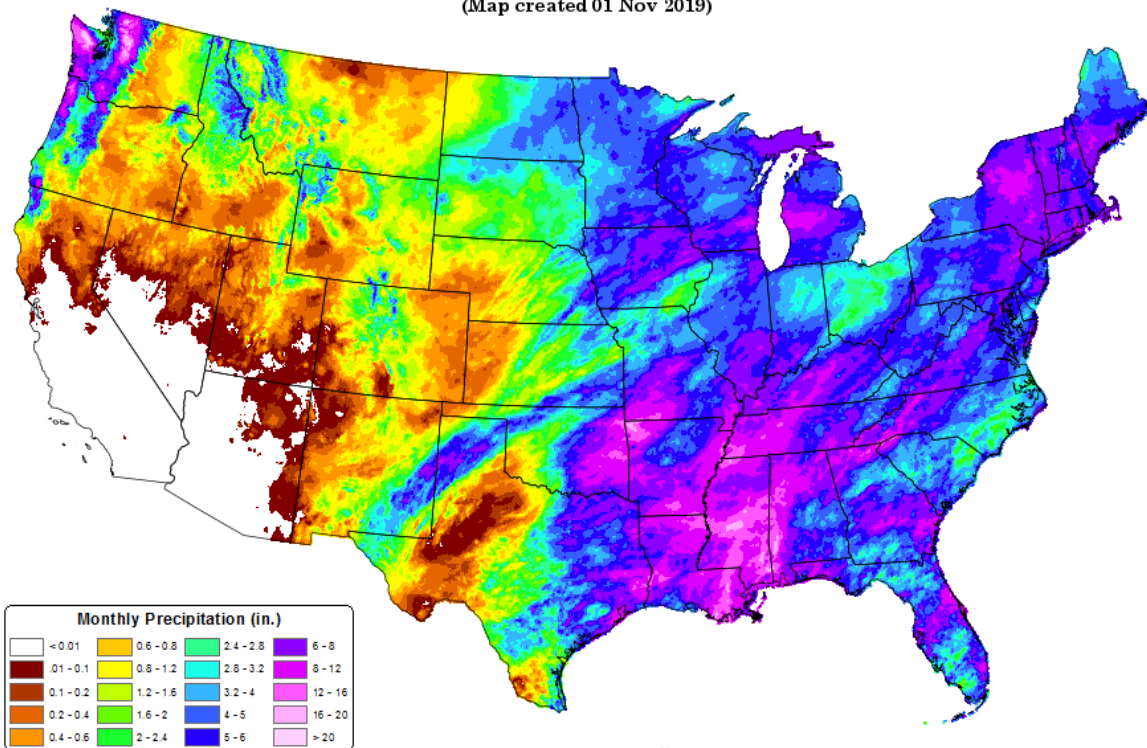
Issued November 8, 2019 9:12 AM MDT



Actual

Total Precipitation: 01 Oct 2019 - 31 Oct 2019

Period ending 7 AM EST 31 Oct 2019
(Map created 01 Nov 2019)

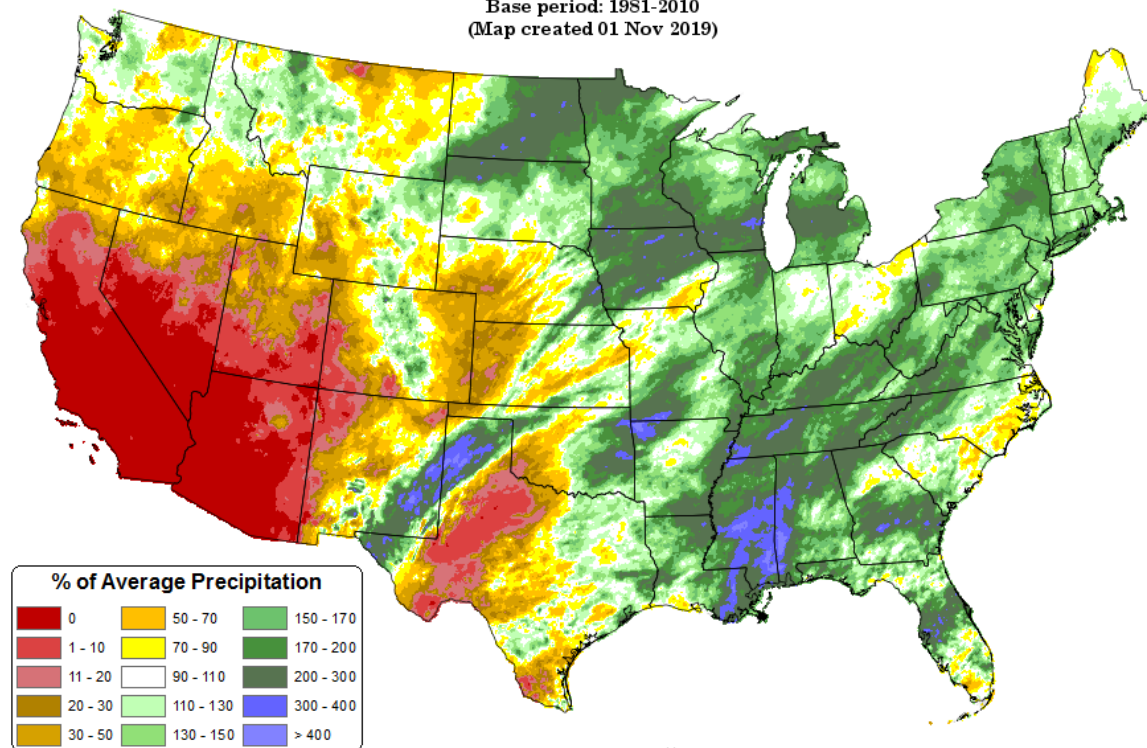


Copyright (c) 2019, PRISM Climate Group, Oregon State University

Anomaly

Total Precipitation Anomaly: 01 Oct 2019 - 31 Oct 2019

Period ending 7 AM EST 31 Oct 2019
Base period: 1981-2010
(Map created 01 Nov 2019)



Copyright (c) 2019, PRISM Climate Group, Oregon State University

October 2019 Climate Summary

Statewide Temperature & Precipitation Trends

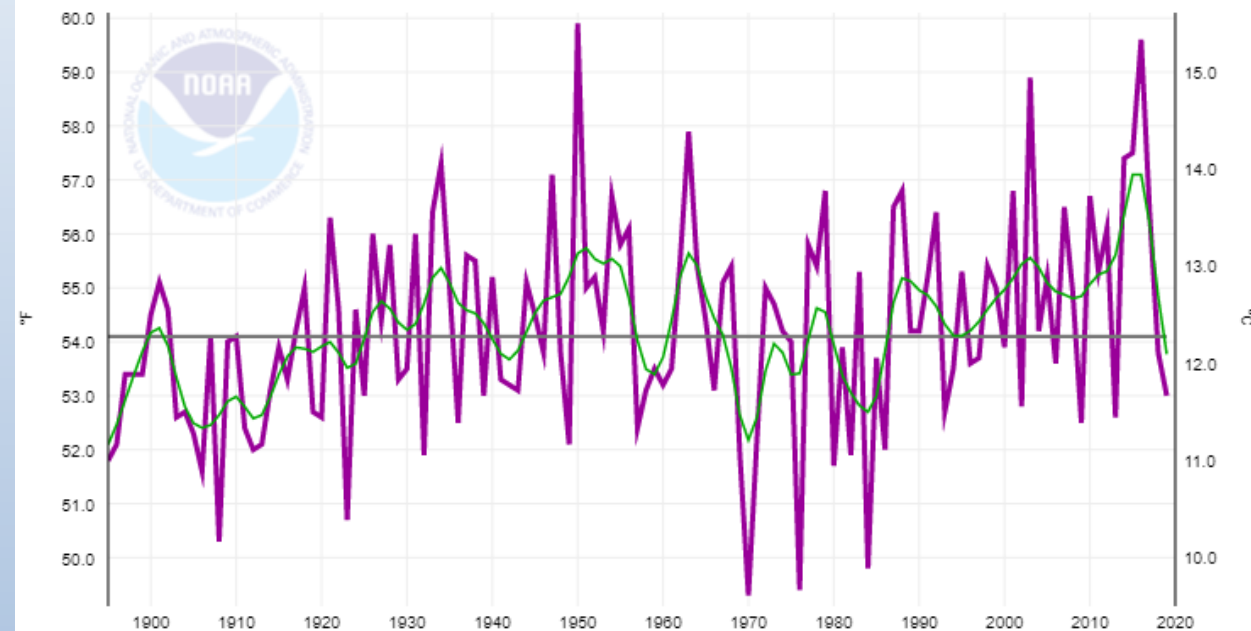
Weather Forecast Office
Albuquerque, NM
Issued November 8, 2019 9:12 AM MDT



Temperature

New Mexico, Average Temperature, October

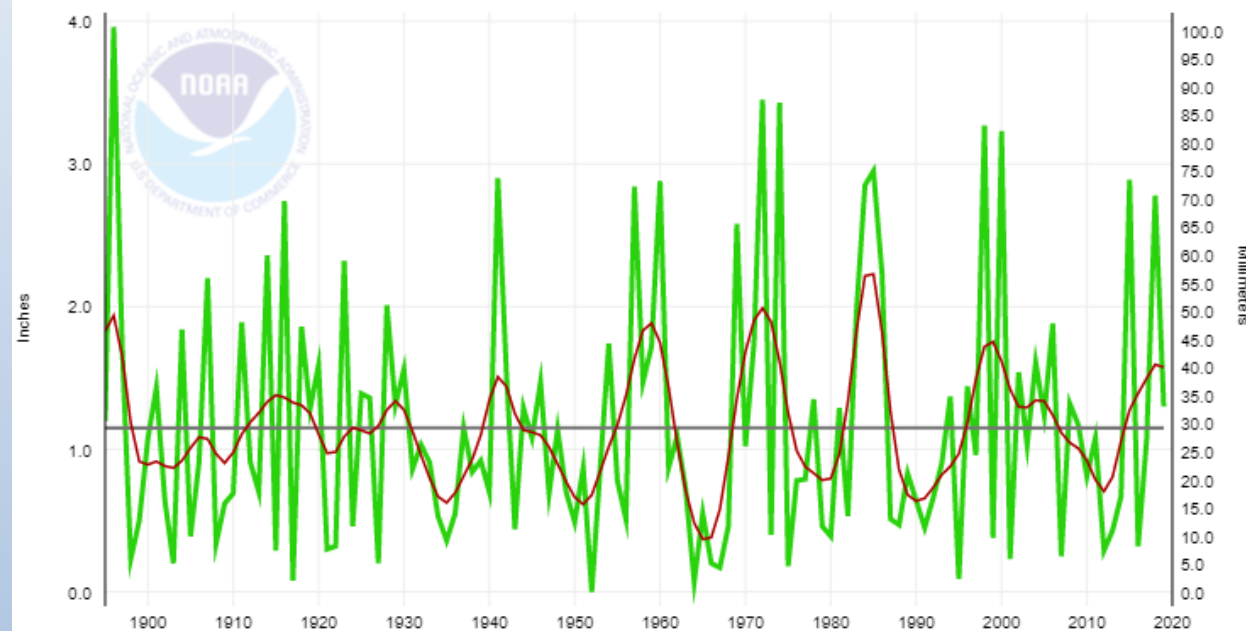
Avg Temperature 1901-2000 Mean: 54.1°F Binomial Filter



Precipitation

New Mexico, Precipitation, October

Precip 1901-2000 Mean: 1.15" Binomial Filter



The average statewide temperature was 53.0° which was 1.1° below the long-term normal of 54.1° (1901-2000). This ranked as the 30th coolest October on record.

The average statewide precipitation was 1.30" which was 0.15" above the long-term normal of 1.15" (1901-2000). This ranked as the 43rd wettest October on record.

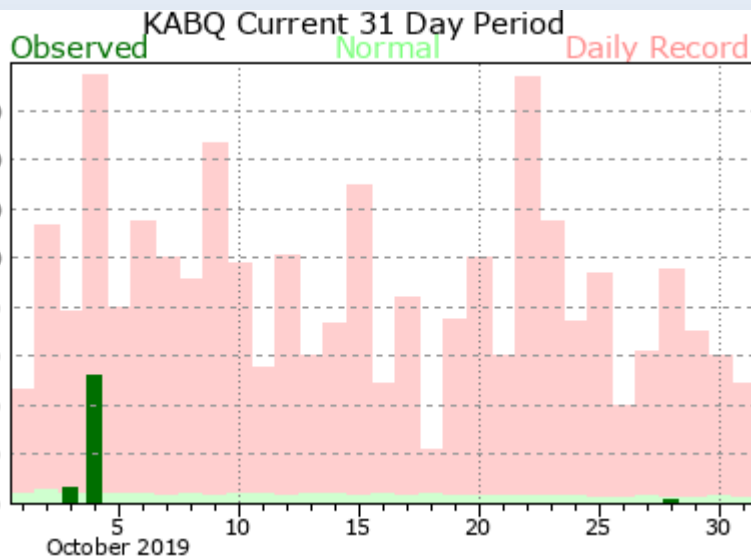
October 2019 Climate Summary

Precipitation – Climate Sites

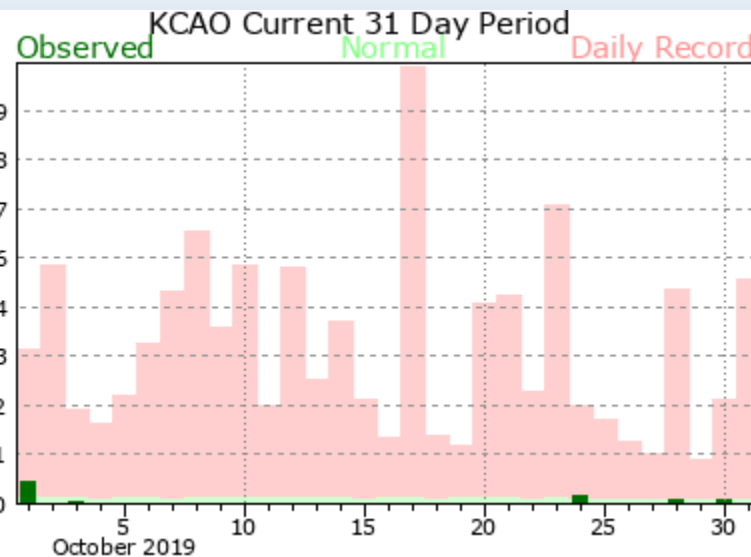
Weather Forecast Office
Albuquerque, NM
Issued November 8, 2019 9:12 AM MDT



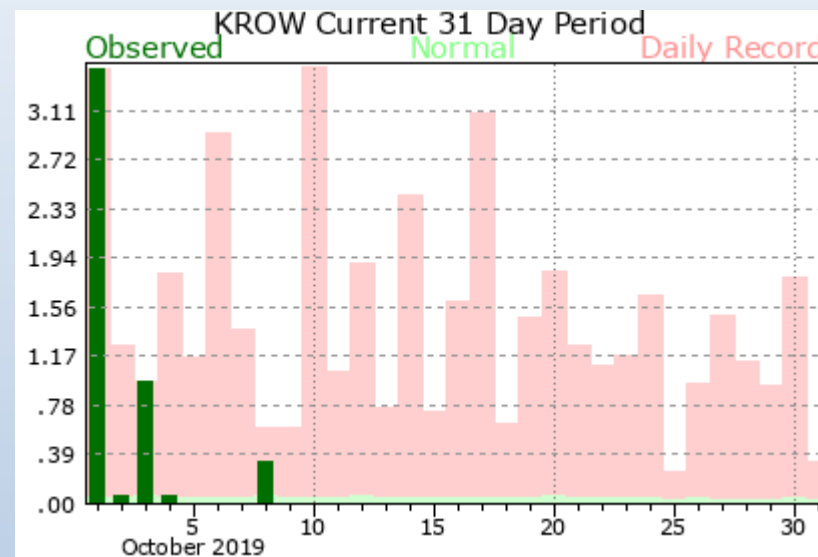
Albuquerque Sunport



Clayton



Roswell



There was 0.59" of precipitation measured at the Sunport, compared to the normal of 1.02", or 0.49" below normal. This ranks as the 66th driest October on record (1893-2019).

There was 0.30" of precipitation measured at Clayton, compared to the normal of 1.11", or 0.81" below normal. This ranks as the 33rd driest October on record (1893-2019).

There was 4.83" of precipitation measured at Roswell, compared to the normal of 1.23", or 3.60" above normal. This ranks as the 4th wettest October on record (1893-2019).

October 2019 Climate Summary

Severe Weather*








Weather Forecast Office
Albuquerque, NM
Issued November 8, 2019 9:12 AM MDT



Event Type	Date	County/Zone Name	Magnitude	Type	Event Narrative
Flash Flood	10/1/19	Chaves			Six to eight inches of water flooded a home on the south side of Roswell.
Flash Flood	10/1/19	Curry			Flooding impacted low lying areas around Clovis. NM-77 closed due to flooding near Pleasant Hill.
Flash Flood	10/1/19	Chaves			NM-2 closed, NM-267 closed, U.S. 285 closed, NM-409 closed.
Flash Flood	10/1/19	Roosevelt			NM-267 closed west of Portales.
Flash Flood	10/3/19	Chaves			Areas along U.S. 285 inundated with water, NM-2 and U.S. 285 closed, NM-409 closed.
Flash Flood	10/3/19	Roosevelt			Streets in Portales under water with several stalled vehicles.
Heavy Rain	10/3/19	Curry			Minor flooding reported throughout Clovis.
Hail	10/8/19	Chaves	1"	Hail	Nickel to quarter size hail and 50 mph wind gusts impacted Midway.
Hail	10/8/19	Socorro	1"	Hail	Hail up to the size of quarters fell a couple miles east of San Antonio.
Winter Storm	10/23-10/24/19	Raton Pass & Mesas	2-6"		Severe winter driving conditions, including closure of I-25 between Raton and Raton Pass.
Winter Weather	10/29-10/30/19	Raton Pass & Mesas			U.S. 64 closed between Clayton and Raton. Multiple accidents near Des Moines.
Winter Weather	10/29-10/30/19	Union			U.S. 64 closed west of Clayton. Multiple accidents near Clayton. U.S. 56 closed.
Winter Weather	10/29-10/30/19	Far Northeast Highlands			Severe winter travel conditions along I-25 between Raton, Wagon Mound, and Springer.
Winter Weather	10/29-10/30/19	Northeast Highlands			Northbound lanes of I-25 closed near Las Vegas. Multiple accidents.
Winter Weather	10/29-10/30/19	Quay			I-40 closed between Newkirk and Tucumcari. Multiple accidents.
Winter Weather	10/30/19	Guadalupe			Northbound lanes of U.S. 285 closed near Vaughn. At least one accident.

*Storm reports are considered preliminary until a final review is certified in the NWS Storm Data publication. Certified data is available three to four months post-event at: <https://www.ncdc.noaa.gov/stormevents/>



-  NCEI Climatological Rankings: <https://www.ncdc.noaa.gov/cag/national/rankings>
-  PRISM Climate Data: <http://www.prism.oregonstate.edu/>
-  NWS Local Climate Pages: <https://w2.weather.gov/climate/index.php?wfo=abq>
-  NCEI Storm Data: <https://www.ncdc.noaa.gov/stormevents/>
-  Questions?: sr-abq.webmaster@noaa.gov
-  NWS Albuquerque Facebook
-  @NWSAlbuquerque & #nmwx