



Drought Information Statement for New Mexico

Valid September 4, 2024

Issued By: NWS Albuquerque

Contact Information:

- This product will be updated October 17, 2024 or sooner if drought conditions change significantly.
 - Please see all currently available products at <https://drought.gov/drought-information-statements>.
 - Please visit <https://www.weather.gov/ABQ/DroughtInformationStatement> for previous statements.
 - Please visit <https://www.drought.gov/drought-status-updates> for regional drought status updates.
-
- Drought persisted with minor improvements over the past month.



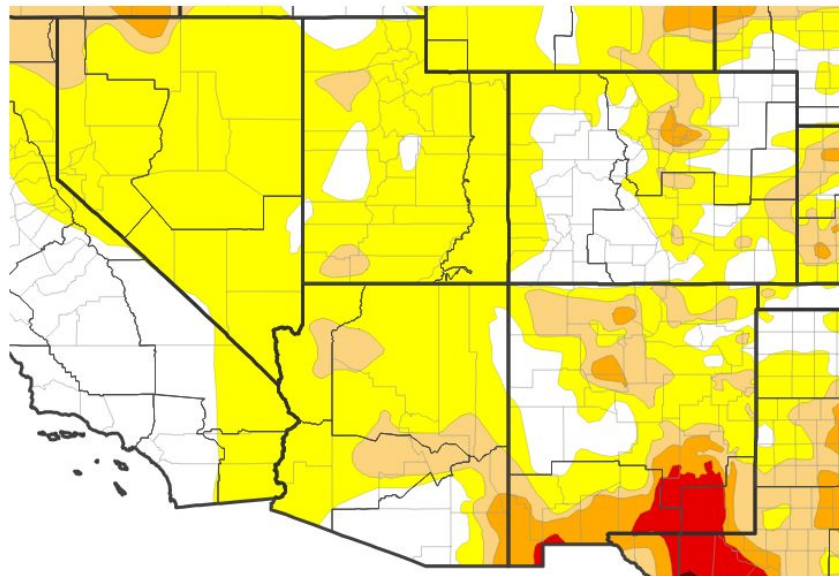


U.S. Drought Monitor

Link to the [latest U.S. Drought Monitor](#) for the southwest U.S.

- Drought intensity and Extent
 - **D4 (Exceptional Drought)**: Exceptional drought was removed from southeast NM.
 - **D3 (Extreme Drought)**: Portions of southeast NM and extreme southwestern NM.
 - **D2 (Severe Drought)**: Portions of the southern counties of NM and localized spots between Albuquerque and Abiquiu.
 - **D1 (Moderate Drought)**: Portions of northern, eastern, and the remainder of southern NM.
 - **D0: (Abnormally Dry)**: The remainder of central and eastern NM, and surrounding portions of CO, AZ, and TX.

U.S. Drought Monitor



U.S. Drought Monitor



Source(s): NDMC, NOAA, USDA; image courtesy of Drought.gov

Data Valid: 08/27/24

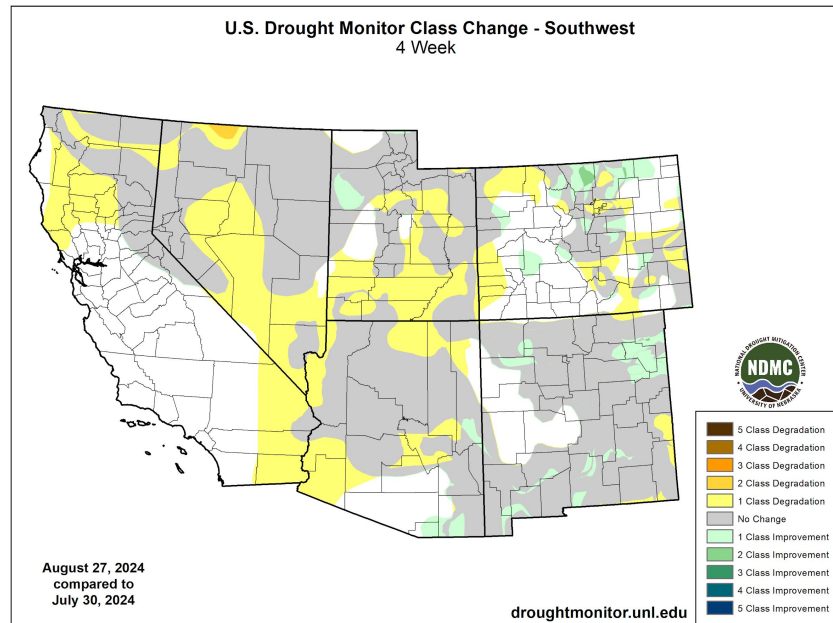




Recent Change in Drought Intensity

Link to the latest [4-week change map](#) for the southwest U.S.

- Four Week Drought Monitor Class Change.
 - Drought Worsened: Minor deterioration occurred Roosevelt County NM.
 - No Change: Large portions of NM saw little to no change.
 - Drought Improved: Small pockets of NM experienced 1 class improvements, mainly southern and northeast parts of the state.

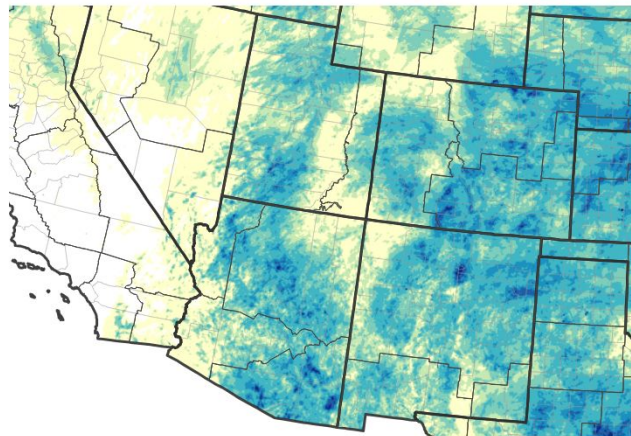




Precipitation

- Very active periods with showers and storms during the early summer continued across the region through August. Many areas saw above normal precipitation amounts in the last 30 days, especially the Continental Divide, the northern high terrain, and eastern NM. Below normal rainfall persisted along the NM/AZ border, most of southeast NM, and parts of the borderland.

30-Day Precipitation Accumulations (Inches)



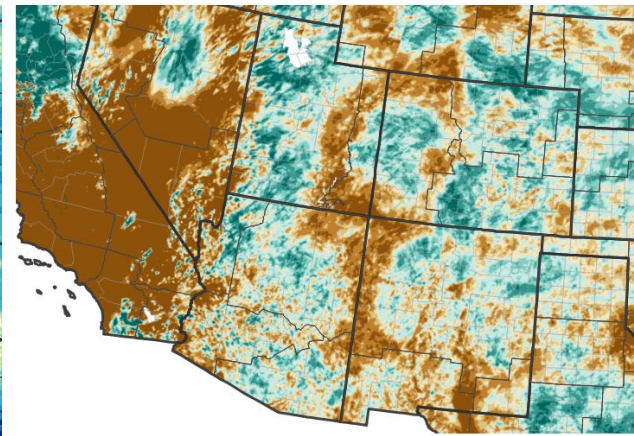
Inches of Precipitation



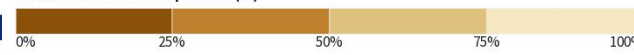
Source(s): National Weather Service Multi-Radar Multi-Sensor System;
image courtesy of Drought.gov

Last Updated: 09/04/24

30-Day Percent of Normal Precipitation



Percent of Normal Precipitation (%)



Source(s): National Weather Service Multi-Radar Multi-Sensor System;
image courtesy of Drought.gov

Last Updated: 09/04/24

Image Caption: (Left) 30-day Precip (Right) 30-day Percent of Normal ending 9/4/2024.



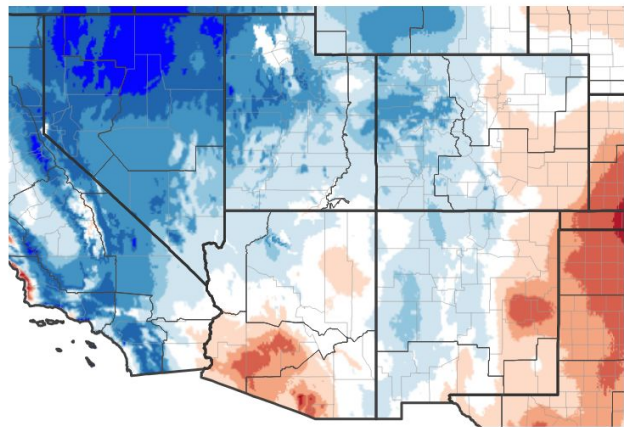


Temperature

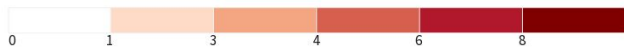
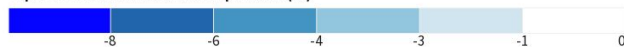
[Link to HPRCC](#)

- Temperatures during August were above normal over nearly the entire region, especially eastern NM. It was not until the last week of August that western and central areas of NM began to experience cooler than normal weather.

7-Day Temperature Anomaly



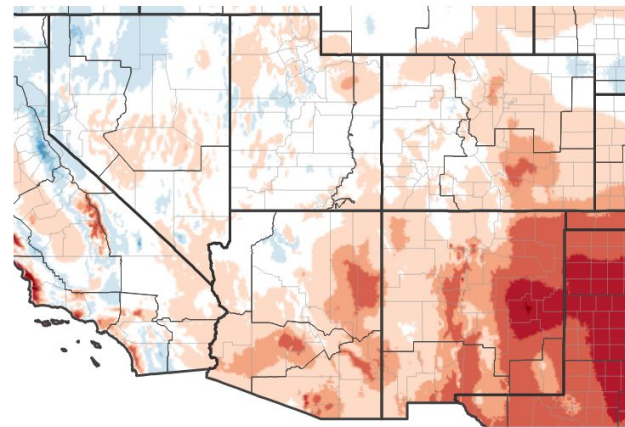
Departure from Normal Max Temperature (°F)



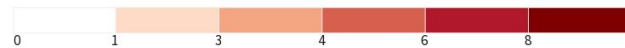
Source(s): NOAA's National Centers for Environmental Information; image courtesy of Drought.gov

Data Valid: 08/31/24

30-Day Temperature Anomaly



Departure from Normal Max Temperature (°F)



Source(s): NOAA's National Centers for Environmental Information; image courtesy of Drought.gov

Data Valid: 08/31/24

Image Caption: (Left) 7-day Temp Anomaly (Right) 30-day Temp Anomaly ending 8/31/2024.



National Oceanic and
Atmospheric Administration
U.S. Department of Commerce

National Weather Service
Albuquerque



Summary of Impacts

Links: See/submit [Condition Monitoring Observer Reports \(CMOR\)](#) and view the [Drought Impacts Reporter](#)

Hydrologic Impacts

- Streamflow was generally near normal across the vast majority of NM at the end of August with pockets of above and below normal flows. Flash flooding occurred over portions of the area with localized, short-duration higher flows.

Agricultural Impacts

- Rangeland in particular has suffered in the southeastern part of the state.

Fire Hazard Impacts

- 100-hour and 1000-hour dead fuel moisture values are moist across much of the region, especially southern NM where pockets of 100-hour dead fuels are wet ([Southwest Coordination Center](#)). The September and October significant wildland fire potential shows normal risk.





Hydrologic Conditions and Impacts

- This map shows how various river basins are performing compared to a 7-day average streamflow for the week of September 3 (30-year climatology).
- Most of the state is reading as normal with a couple basins showing pockets of above and below normal flow.
- It is important to keep in mind that the major river systems of New Mexico are largely controlled by dams and reservoirs and that “performance” is heavily influenced by human activity.

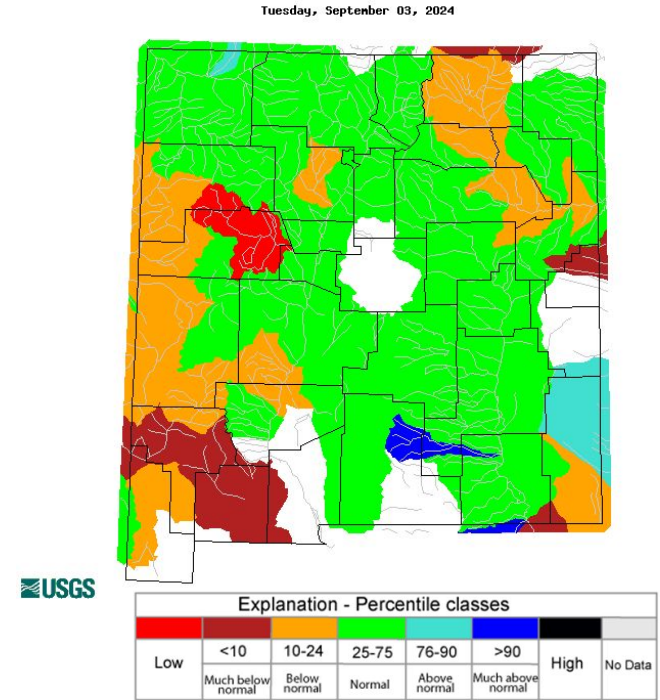
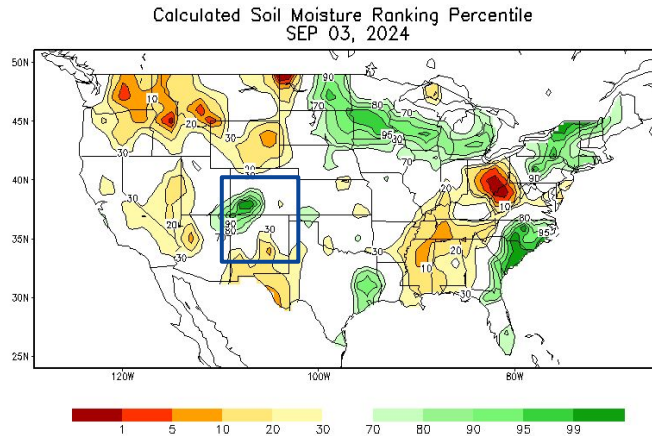
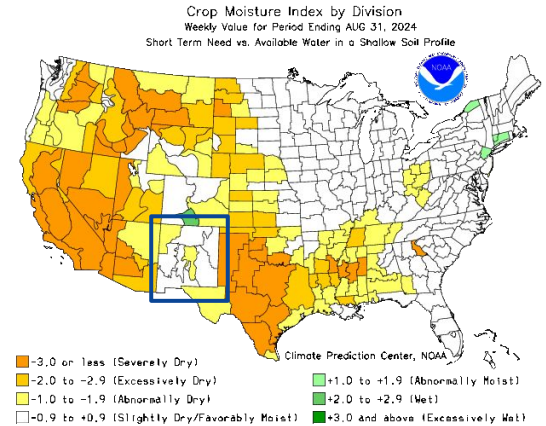


Image Caption: USGS 7 day average streamflow HUC map valid 9/3/2024



Agricultural Impacts

- Soil moisture conditions are below normal for much of southern New Mexico, near normal across central NM, and above normal across northwest NM.
- Crop moisture conditions are in the slightly dry to favorably moist category in most climate divisions across NM. Crop moisture conditions are still abnormally dry along the Central Highlands and the Northwest Plateau.



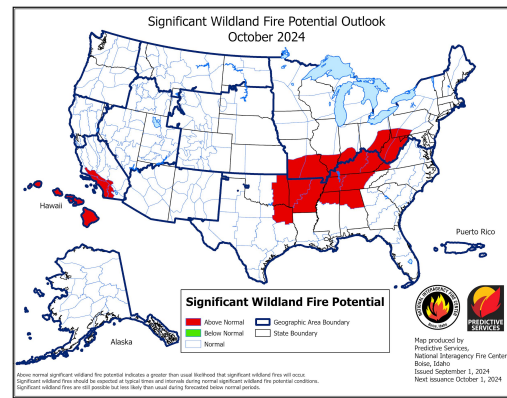
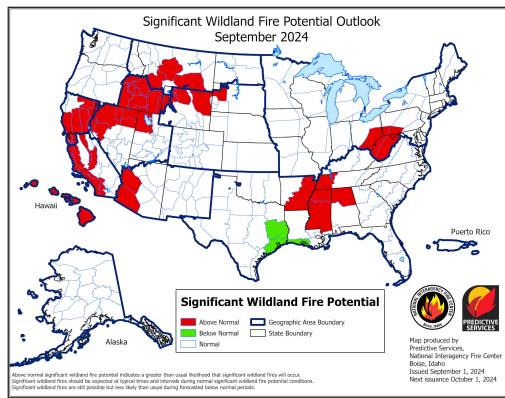
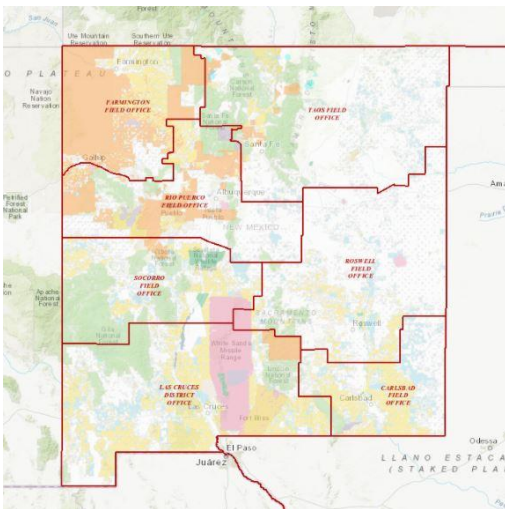


Fire Hazard Impacts

Link to [Wildfire Potential Outlooks from the National Interagency Coordination Center.](#)

- The latest September and October 2024 significant wildland fire potential outlooks shows normal fire potential.

Detailed information available on the interactive map below.

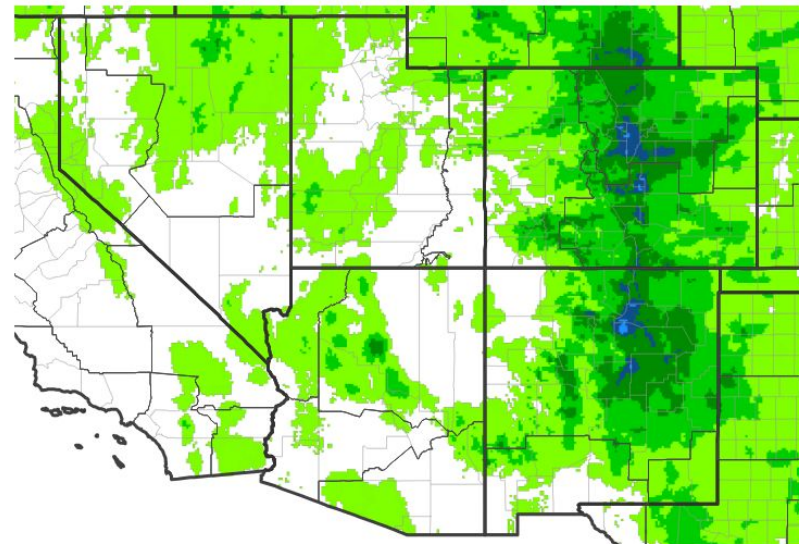




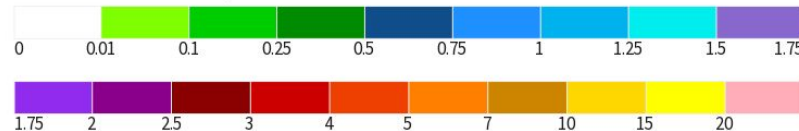
Seven Day Precipitation Forecast

- Large portions of NM are forecast to pick up light to moderate precipitation amounts over the next 7 days. The heavier amounts are expected along the central mountain chain and nearby highlands and plains of eastern NM.

7-Day Quantitative Precipitation Forecast for September 4, 2024–September 11, 2024



Predicted Inches of Precipitation



Source(s): National Weather Service Weather Prediction Center; image courtesy of Drought.gov

Last Updated: 09/04/24



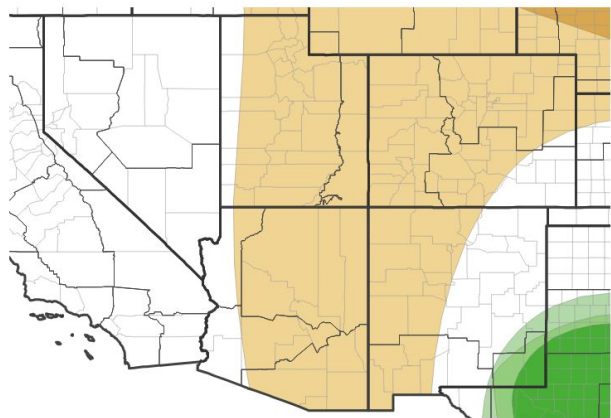


Long-Range Outlooks

The latest monthly and seasonal outlooks can be found on the [CPC homepage](#)

- The latest CPC monthly precipitation outlook for September favors below normal precipitation in western NM with above normal precipitation for far southeast NM.
- The latest CPC monthly temperature outlook for September favors above normal temperatures for all of New Mexico, especially the north and west.

Monthly Precipitation Outlook for September 1,
2024-September 30, 2024



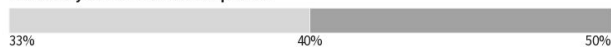
Probability of Below-Normal Precipitation



Probability of Above-Normal Precipitation



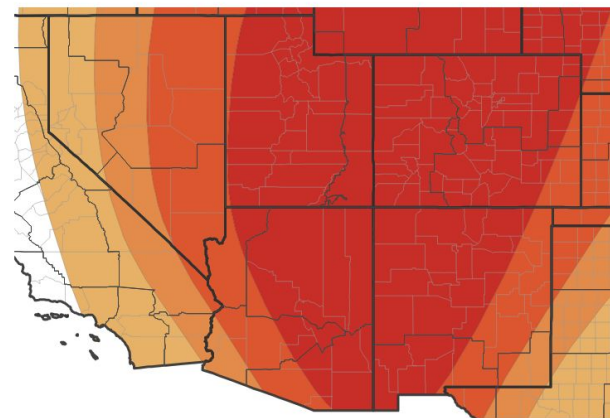
Probability of Near-Normal Precipitation



Source(s): Climate Prediction Center; image courtesy of Drought.gov

Last Updated: 08/31/24

Monthly Temperature Outlook for September 1,
2024-September 30, 2024



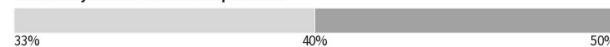
Probability of Below-Normal Temperatures



Probability of Above-Normal Temperatures



Probability of Near-Normal Temperatures



Source(s): Climate Prediction Center; image courtesy of Drought.gov

Last Updated: 08/31/24

Image Caption: (Left) September Precip Outlook and (Right) Temperature Outlook



National Oceanic and
Atmospheric Administration
U.S. Department of Commerce

National Weather Service
Albuquerque

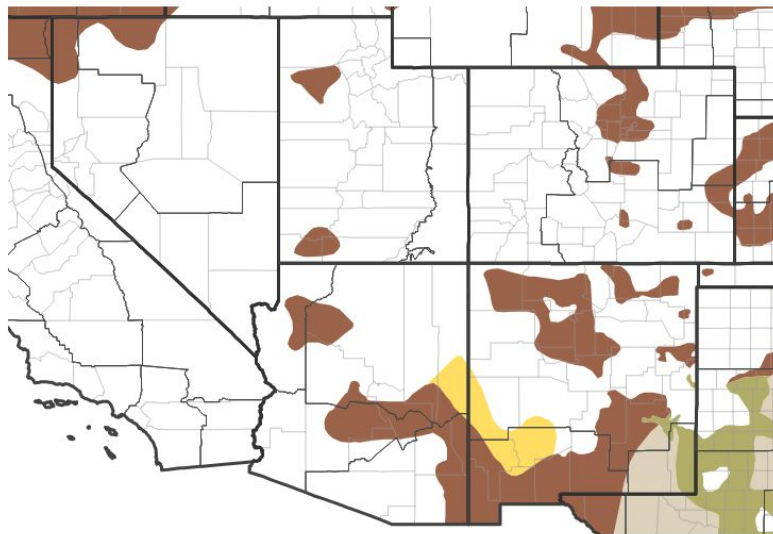


Drought Outlook

The latest monthly and seasonal outlooks can be found on the [CPC homepage](#)

- Based on the fact that conditions can be quite dry in New Mexico when we call for near normal temperatures and precipitation, the Climate Prediction Center is calling for persistence of drought conditions throughout much of the state through September, especially the southern tier.

1-Month Drought Outlook for September 1, 2024–September 30, 2024



Drought Is Predicted To...



Sources: Climate Prediction Center; image courtesy of Drought.gov

Last Updated: 09/21/24

Links to the latest:

[Climate Prediction Center Monthly Drought Outlook](#)

[Climate Prediction Center Seasonal Drought Outlook](#)



National Oceanic and
Atmospheric Administration
U.S. Department of Commerce

National Weather Service
Albuquerque