

STATEWIDE ADVANCED MESONET W/3-D

1st in New York

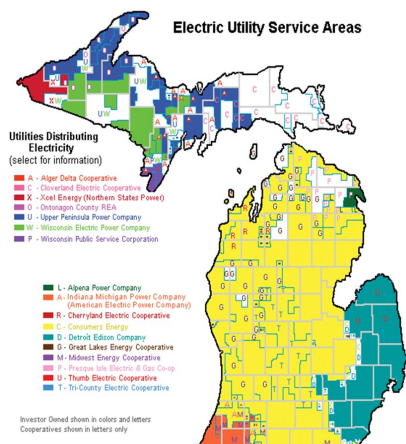
- Standard @ 10m
- Enhanced @ 10m

Up to 125 Stations
No More than ~25 miles apart
Reports Every 1-15 minutes

BENEFITS

- Easy Access
- Real-time & Historical Data
- Comprehensive Network
- New Measurements: Soil Moisture, Snowpack, Radiation

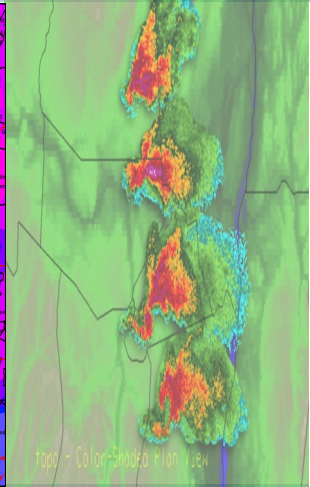
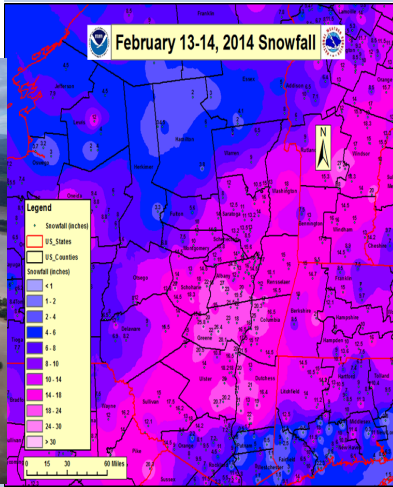
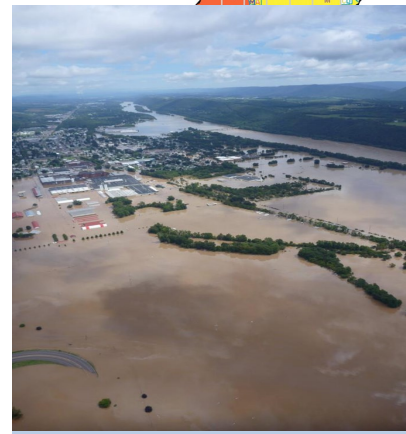
Albany State University



NORTHEAST REGIONAL OPERATIONAL WORKSHOP XV

NOVEMBER 12-13, 2014

ALBANY NEW YORK



SPONSORED BY:
 NATIONAL WEATHER SERVICE
 DEPARTMENT OF EARTH AND ATMOSPHERIC SCIENCE
 AMERICAN METEOROLOGICAL ASSOCIATION.

