

Crest Now Seen at 21.5

By WILLIAM J. COLE
Daily News Managing Editor

With the Mississippi River at a record-breaking flood level in Winona, the Weather Bureau today said the river would reach a flood crest of 21.5 next Tuesday.

But colder weather along the northern branches of the Upper Mississippi was slowing snow melt and probably forcing a longer period of time when the river would remain at the crest or near it, the bureau said.

After crossing the old flood mark of 17.94 at 4:30 p.m. Thursday the river surged to 19.07 at noon today. This is 1.45 higher than the 17.62 mark of Thursday noon.

Shortly before noon today the Weather Bureau gave the following estimated stages for the next three days.

Saturday 19.8
Sunday 20.6
Monday 21.1

The estimated crest set for Tuesday is about half a foot higher than the Weather Bureau previously had said it would be.

The following table indicates the stage of river stations in this district, the 24-hour change, three-day forecasts where available and the indicated crest:

Station	Today	Change	Sat- day	Sun- day	Monday	Crest
St. Paul	25.9	+ .4	26.1	26.3	26.6	27 April 20
Hastings	24.8	+ .6				25 April 17
Red Wing	19.6	+1.1			20.5	April 17
Lake City	21.0	+1.0			22	April 19
Wabasha	19.0	+1.6			20	April 19
Winona	19.1	+1.5	19.8	20.6	21.1	21.5 April 20
La Crosse	15.2	+ .5	15.8	16.6	17.4	18 April 21

In addition the Weather Bureau announced that the stage at ALMA today was 18.1 with a crest of 19.5 expected on April 20.

The rate of rise was slightly lower at Red Wing and LAKE CITY today where increases of 1.1 and 1.0 were reported, than at WABASHA, ALMA and WHITMAN, Winona 5A and the CITY OF WINONA where increases were 1.6 and 1.5.

Farther downriver the 24-hour changes were under a foot. The river at TREMPALEAU was up .9 of a foot. Other reports included DAKOTA, up .5 of a foot, DRESBACH .7 of a foot, DRESBACH .7 of a foot and LA CROSSE .5.

All tributary streams in the district were falling, some rapidly. The CHIPPEWA RIVER at Durand stood at 12.8 feet, down .3 of a foot. Flood stage there is 11 feet.

The ZUMBRO at Theilman was at the 32-foot mark today, down .4 of a foot. The TREMPALEAU RIVER at Dodge, Wis., was 3.1, down 1.3 from Thursday and the ROOT RIVER at Houston was 7.7, down .3 of a foot. All there are well below the flood stage marks.

THE RISING Mississippi passed the old record with hardly a pause.

At 4 p.m. Thursday the stage stood at 17.90 and one hour later the reading was 18.00 feet. The old record, 17.94, was passed about 4:30 p.m., operators at the municipal pumping station at the foot of Johnson Street estimated.

Stream flowage over the Winona Dam is at an all-time high. Wallace Voss, lockmaster at 5A, reported today. The amount at 8 a.m. was 210,000 cubic feet per second and was far over the 175,000 previous record in 1952.

The jump in the past several days reads like this:
Saturday 194,000
Wednesday 153,000
Thursday 182,000
Friday 210,000

In midsummer normal flow is 14,000 cubic feet per second. About 7 1/2 gallons are in a cubic foot.

Rail Service Ends; Buses Still Running

Rail service here came to a soggy halt Thursday when the Burlington Railroad sent its last train to Winona Junction. Beginning today, one train will come from Chicago as far as North La Crosse, a La Crosse ticket agent said this morning. The train will turn there and return later to Chicago. This will continue until tracks are flooded south of La Crosse, the agent said.

The road's train to the Twin Cities, running on North Western tracks through Eau Claire to Minneapolis, is no longer directly connected with North La Crosse. Minneapolis-bound passengers must take the Milwaukee Road to Camp Douglas, where they can transfer to the Burlington.

The CHICAGO & NORTH WESTERN RAILWAY is operating with a skeleton crew here. Its only stock is one locomotive, parked on high ground near its 2nd Street depot, and cars loaded with crushed rock, which have been pushed onto the line's Mississippi River bridge to stabilize it.

The MILWAUKEE ROAD suspended operations here Wednesday night. Its last cars were taken to La Crosse.

Burlington stock is also in La Crosse. Even the bus it uses to take passengers to and from the depot here to Winona Junction has been driven there, the La Crosse agent said.

GREYHOUND BUS LINES is still running as nearly on schedule as possible, and extra buses have been put on here and at La Crosse to handle the increased passenger volume, caused by a cessation of rail and air service.

Regular air service ended here Thursday, when NORTH CENTRAL AIRLINES canceled its flights into the city. Light planes were still using the field then, but it was officially closed today, when water began creeping onto runways.

Pilots may use the field at their own risk now.

Immunization Clinic Delayed in Buffalo Co.

(Disregard Earlier Story Page 5)

ALMA, Wis. — An immunization clinic for Buffalo County school children, scheduled for Tuesday, has been postponed until May 4.

The Buffalo County Home-makers banquet has been postponed indefinitely. A date for it will be announced later.

Lodge Stops In Honolulu

HONOLULU (AP) — Henry Cabot Lodge, former U.S. ambassador to South Viet Nam, touched down here for an overnight stay Thursday night before heading west to discuss the Vietnamese question with friendly nations. He leaves today for New Zealand. He would make no comment to newsmen on his arrival at Hickam Air Force Base. He was met by Adm. U.S. Grant Sharp, top U.S. military commander in the Pacific.

State CD Head Praises City Efforts

Civil Defense workers here were commended Thursday by Roy Aune, state CD director, who toured the area with Gov. Karl Rolvaag.

The local organization is "well set up," Aune said, and appears to have good leadership.

"I've been especially impressed by the organization of effort," he said. "In such a short time as this, with so many people involved, there is bound to be some misspent effort. But this has been minimal. After all, our major concern is to protect people and preserve property."

Aune cautioned against a let-down after peak levels have passed. Individuals tend to take chances, he said, but they should remember that much danger still exists after high water recedes.

Youngsters, particularly, tend to seek outlets for their energy after the excitement of dike work and flood fighting dies down, he warned. Small children also should be watched closely, Aune said.

Raccoon Turns Out the Lights

PALATINE, Ill. (AP) — A raccoon turned the lights out in this suburb of 11,500 northwest of Chicago Thursday night.

It took electric company workers nearly two hours to repair the damage. They said they found the electrocuted raccoon wedged against a heavy, current-carrying metal bar.

Minor Damage From Earthquake

RIVERSIDE, Calif. (AP) — Only minor damage was reported from an earthquake in a three-county area Thursday.

The quake was felt at 12:00 p.m. in Riverside, San Bernardino, Fontana, Rialto, Colton, Chino, Pomona and Santa Ana.

The California Institute of Technology said it had a magnitude on the Richter scale of 4.5. Some windows and crockery were broken and telephone service was disrupted briefly.

A Plea

- PLEASE—
- SIGHTSEERS — Stay home and keep off the streets and highways.
 - MOTHERS — Keep children home or within earshot.
 - FAMILIES — Keep dogs locked up.

Governor's View of City: Critical, But Not Hopeless

Gov. Karl Rolvaag, something of an expert in view of his recent visits to flood areas, described Winona's situation Thursday as "critical but not hopeless."

The governor was on his eighth successive day of inspection trips to flood areas all over the state. He said the city would get as much state help as possible, even though its resources are thinly spread because of heavy floods in several large areas.

THE INSPECTION party arrived in four planes, landing about 5:15 p.m. at Max Conrad Field. The group had been advised by Federal Aviation Agency officials in St. Paul that landing was impossible, Rolvaag said, but a telephone call from Sen. Roger Laufenburger to Mayor R. K. Ellings reassured the group that the airport was still in operation.

Arriving with Gov. Rolvaag were Sen. Laufenburger, Rep. Frank Theis, Roy Aune, state Civil Defense director, K. W. Gardiner, district coordinator for the federal Office of Emergency Planning, and Lt. Col. Clint Johnson, a member of state Adjutant General Chester Moelein's staff. A cluster of Twin Cities and out-of-state newsmen also was on hand. Among these was a New York Times correspondent, Guy Gillette, who also is doing a profile of the governor for a national magazine.

INTERVIEWED by the Daily News after his tour of the flood protection perimeter, Gov. Rolvaag said:

"Winona is very well organized. The city saw this coming and it acted. On the other hand, some municipalities did little but wait and we had to send ducks and trucks to evacuate them."

"Municipal and local officials deserve a lot of credit. The work is remarkably well planned and well thought out. While the situation looks critical, it is far from hopeless, thanks to these efforts."

"I have declared a state of emergency, which supplements but is separate from the President's recent designation of Minnesota as a disaster area. The special emergency proclamation was necessary because Public Law 875, which permits the President to allocate funds for rebuilding certain public facilities, does not apply to roads in the federal-aid system. Organizations now are on duty."

"In order to qualify for a presidential disaster declaration, the state must spend \$2 million. This, of course, has been considerably exceeded."

"FEDERAL FUNDS will be made available soon under terms of these declarations and Public Law 875."

"Other state help for this area includes assignment of Corps of Engineers personnel here to give technical and professional advice and increased



EXPLAINS PLANS . . . Mayor R. K. Ellings accompanies Gov. Karl Rolvaag and party of state officials as they look over Prairie Island dikes. From left, City Rep. Frank Theis, Mayor Ellings, Gov. Rolvaag, Capt. David Lueck, Winona National Guard commander, Lt. Col. Clint Johnson, state adjutant general's office, and Barry Nelson, alderman at large. (Daily News photo)

efforts by Civil Defense and National Guard units."

THE INSPECTION party was met at the airport by Mayor R. K. Ellings and other city officials. Traveling with a police escort, the caravan stopped at the Prairie Island Road where four members transferred to National Guard trucks and jeeps. They stopped at Prairie Island Park for a walk along the levee and a look at the island's deer enclosure.

Clambering up the muddy embankment, the governor talked briefly with John Schramm and James Fossum, Winona Senior High School seniors. The boys, out of school to help fill sandbags, said the governor asked them about the work and left a few parting words of encouragement.

As the party left the site, newly installed lights along the levee blazed into life in the gathering dusk.

Making a windshield inspection of the center portion of the system, the party stopped to look at the Mankato Avenue dike and the Lake Winona pumping station. Tour members and city officials dined at Hotel Winona. Later the governor's entourage also visited civil defense headquarters in the City Hall basement.

THEY WERE told in their praise of operations there and of the efficient communications system under direction of Roy Evelt who has had but five hours sleep in the last three days.

Sen. Laufenburger and Rep. Theis also praised the city's defense effort. They said the governor had contributed materially to the fight by assigning engineers to work on the developing situation in its early stages. The legislators returned to St. Paul in the governor's plane which left at 10:30 p.m.

The governor said he would do what he could to get additional National Guard personnel assigned to the defense fight here.

WHS May Open Late

Resumption of classes at Winona Senior High School after the Easter recess may be delayed because of the flood emergency, school officials said today, but plans now call for students in the elementary grades and junior high schools to return to school as scheduled on Tuesday.

Superintendent of Schools A. L. Nelson said this morning that, although no final decision has been made, it is thought that Senior High classes will remain in recess because of the large number of students who are engaged in emergency flood protection duty.

He said that he thought that it would be possible for classes in the grade schools and junior high schools to meet Tuesday on schedule.

This would be contingent, he said, on the flood situation at that time.

At Phelps School, Dr. Howard Munson, principal, said that the school planned to resume class schedules Tuesday. If the flood emergency should prompt a change in these plans, he said, an announcement would be made.



DISCUSS FLOODING . . . Gov. Karl Rolvaag, center, looks over shoulder of Rep. Frank Theis as officials survey Winona emergency flood defense system. Mayor R. K. Ellings reports on the situation to the governor as Sen. Roger Laufenburger, right, listens. Right rear is James Rice, secretary to the governor. (Daily News photo)

Water Near Dairyland's Coal Pile

At Dairyland Power Co-op, Alma, Thursday morning, water was only nine inches below the steel wall protecting the coalyard.

A dike of existing earth has been pushed around the coalyard. Water was reported to be slowing down at Alma because of the cold weather upriver.

Alma's sewage plant was surrounded and pumping has stopped. Water entered the basement of the Alma fire hall basement. Pumping was attempted until the floor started buckling. Furniture at Stohr's store was removed. Some of the lower level residents west of Highway 35 in the downtown area were forced to move.

Water more than two feet over street level surrounded COCHRANE - FOUNTAIN CITY annex school, COCHRANE. People worked until 3:30 a.m. today removing appliances for the hot lunch and home economics departments.

Polyethylene had been placed around the walls, with a few sandbags, but more sandbags were being laid today. There were eight inches of water in some places on parts of the floor.

Cochrane disposal plant, although surrounded, is in operation and well sandbagged.

Liz Taylor's Father Suffers Heart Stroke

HOLLYWOOD (AP) — Francis Taylor, father of actress Elizabeth Taylor, is convalescing at home from a stroke suffered March 11. Taylor, 65, spent approximately five weeks in Cedars of Lebanon Hospital. He was released Wednesday and a hospital spokesman said he was "greatly improved."

Students Swarm Over the Dikes

Ray Brown of the Minnesota Employment Service here says he sent out to the dikes about 340 high school and college youths today. Of these, more than 100 are from high schools in area communities.

Lewiston and Rushford High Schools sent 50 boys each, in their own school buses, Thursday. Cochrane-Fountain City High School sent 40 Thursday. The delegations will return today, Brown said.

Winona School Supt. A. L. Nelson is telephoning around the area to get high school youths from schools in St. Charles, Plainview, Houston and Caledonia, among others, to come to Winona for sandbag-

ging work, Brown said. He said that Nelson has been promised 100 high school youths from Austin Saturday at 8 a.m. Rochester Junior College has promised a "large number" of workers for today and tomorrow.

The youths are paid the going city rate of \$1.50 an hour for their sandbagging work, Brown emphasized. He sent out 450 new men today, Brown said.

Nelson also is contacting area mayors in an attempt to get adults in the surrounding area to come and help. Every last hand is needed, Brown said. Anyone interested in working on the dikes can call him.

Water, Too

The Heat's on

Sandbaggers — 250 to 300 strong — literally rolled up their sleeves again today and pledged unceasing production in an effort to curb the Mississippi River onslaught along the 20-block area that makes up the Crooked Slough Dike.

One dirt-streaked worker said that he had worked the area for two hours Thursday night and, although trucks continued to roll in an unending line, never saw the same driver twice.

Standing at the foot of Olmstead Street at noon today, with an easy vision were seven bulldozers and more than 100 sandbaggers.

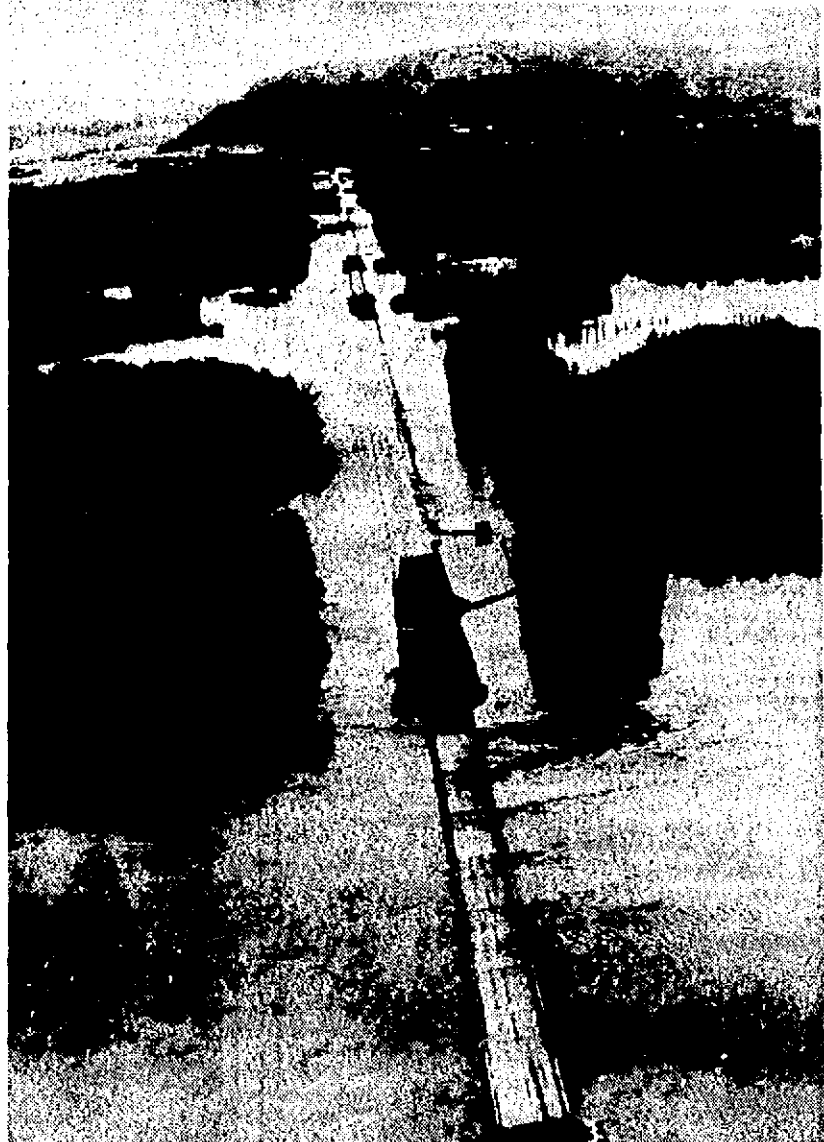
"There must be about 300 or so sandbaggers working right now," said one worker. Another said sandbagging atop the dike would run the depth to 26 feet with reinforcing going on behind.

"We'll do it," was the slogan. "We have to!"

Notice of Annual Meeting of Woodlawn Cemetery Association

Notice is hereby given that the Annual Meeting of the Lot Owners of Woodlawn Cemetery Association will be held Tuesday, April 26, 1965, 3:30 p.m. at the First National Bank.

WOODLAWN CEMETERY ASSOCIATION
NEIL K. SAWYER, SECRETARY.



TOWARD NELSON . . . From a point just above the Wisconsin end of the bridge to Wabasha, the dike road to Nelson (Wisconsin Highway 25) looks like this. Only a few sections of the 2 1/2-mile roadway are above the rising waters of the Mississippi River. The road was closed at 6 p.m. Thursday. (Daily News photo)