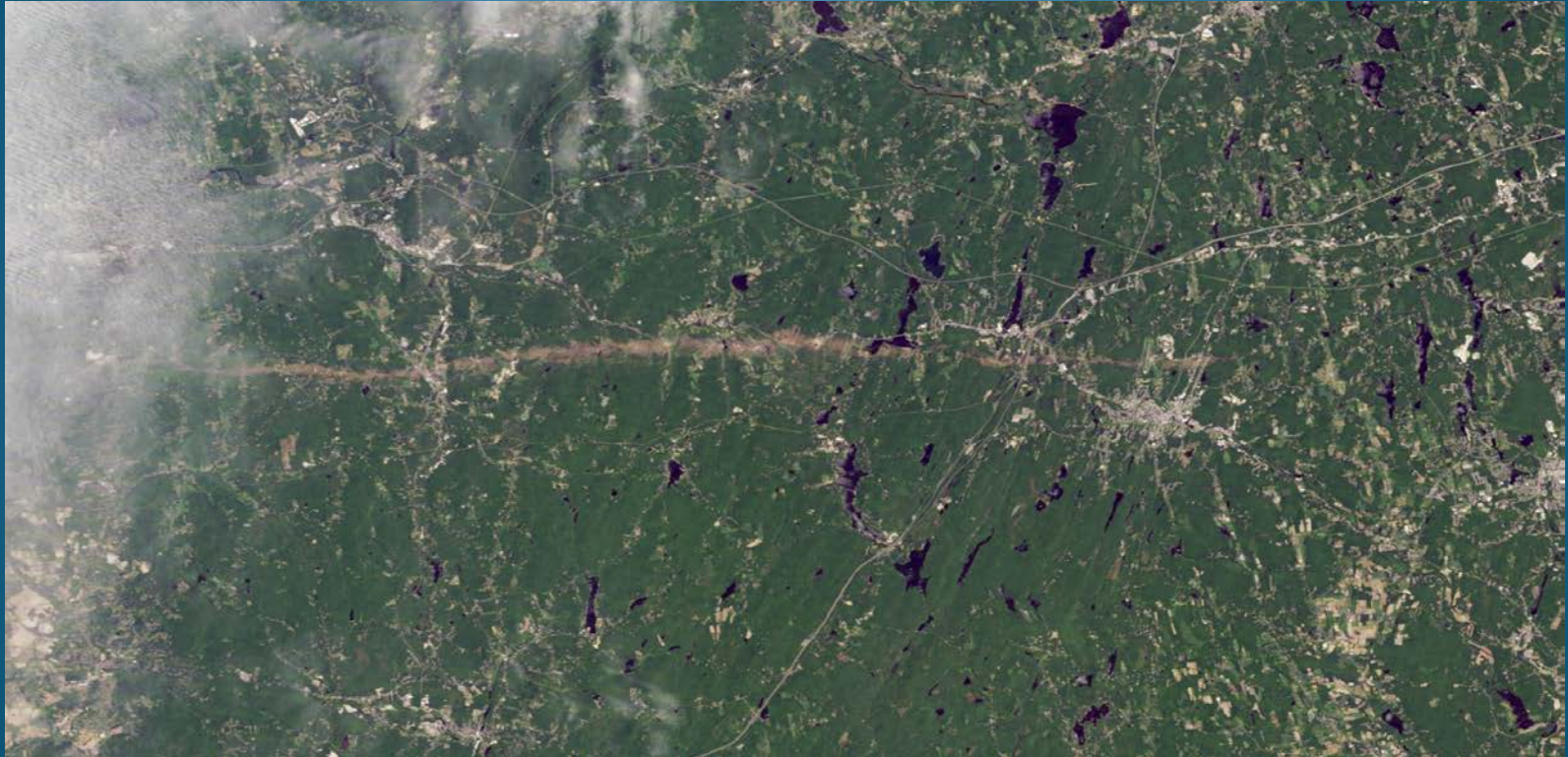


Challenges of Conducting the Storm Survey of the June 1, 2011 Massachusetts Tornadoes



Alan Dunham

Observing Program Leader

NOAA/NWS Taunton, MA

Challenges

1. Plan of Attack
2. Area to Cover
3. Media and Political Interest
4. Interviews
5. Determination of Strength



Plan of Attack

Determine available resources

Determine what is known and what needs to be investigated

Determine makeup of survey teams



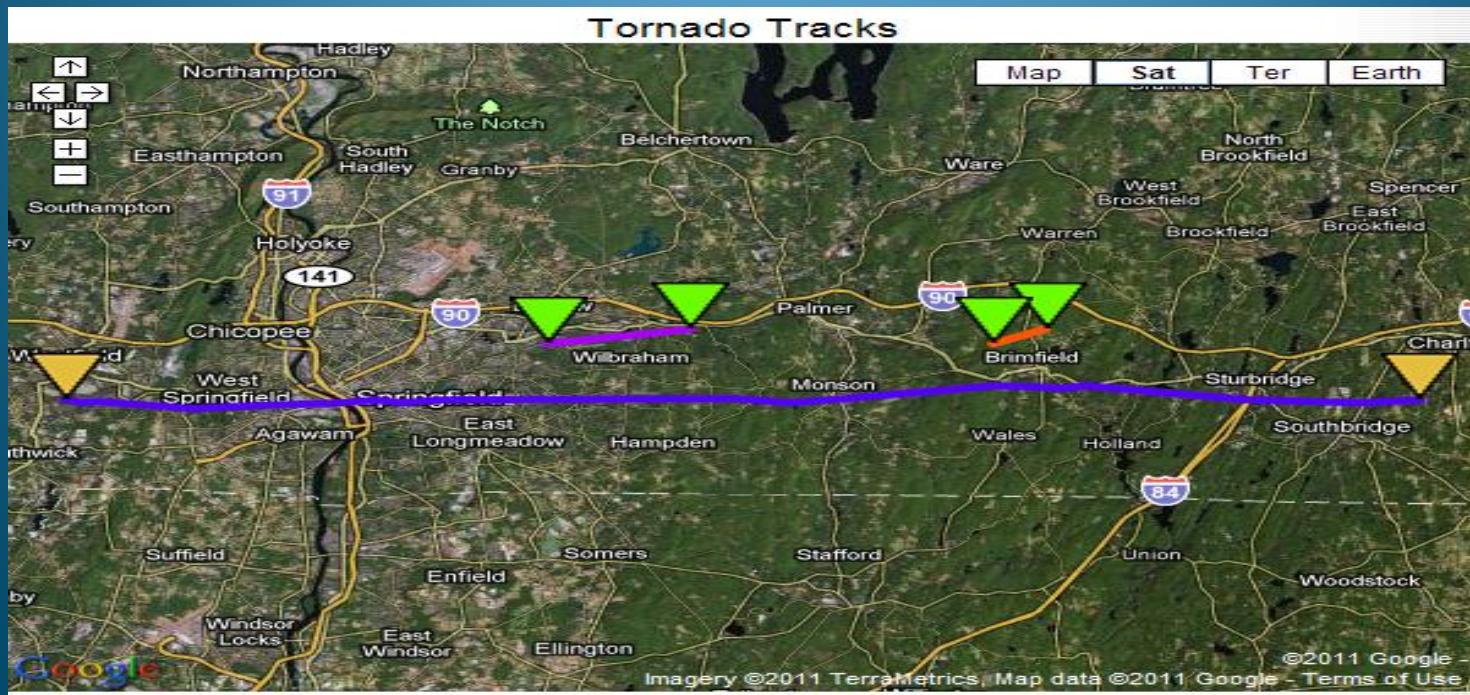
Coordinate with local and state Emergency Managers for input as to where the team/s should investigate as a priority

Discuss with team members possible problems they may face



Area to Cover

- Damage reports along a 30 to 40 mile length
- Up to 400 square miles to cover
- Possible multiple Tornadoes
- Some areas not able to access by land



Media and Political Interest

Media...

At least 10 TV stations, most with multiple teams

Numerous radio stations

Equal number of print media

Political Interest...

Gov. Patrick of MA

U.S. Senators Kerry and Brown

Numerous other state and local representatives





Interviews

- Can be hardest part of conducting a storm survey
- Must be VERY sympathetic of their loss
- Let them talk
- If they or family member suffered a serious injury or loss offer your condolences and move on
- Can be VERY time consuming

Determination of Strength



How did this house get upside down?



It rolled there



EF4 Damage??



There's a floor in that basement



The SLIDERS







Sliders Leave Clues



Came close to losing the whole roof



Just nailed down



Damage looks impressive
Good for TV but doesn't reflect how strong the
storm really was



In addition to the roof gone there were several sections of walls blown out



A person crawled out of there



You MUST take everything you see into account to determine Tornado intensity



Best Practices

- Deployed multiple survey teams
- Utilized Civil Air Patrol for survey from the air
- Coordinated with MEMA prior to conducting surveys

Challenges

- Getting more staff members trained in conducting storm surveys...creating a training program
- Develop “fly away” kits for survey teams
- Work with media partners in better ways to facilitate interviews when conducting storm damage surveys