

How We Serve You



The National Weather Service Forecast Office in Brownsville, Texas serves the eight most South counties of South Texas with the lower four counties consisting of the upper, middle and lower Rio Grande Valley.



National Weather Service meteorologists are on-staff, 24 hours a day, seven days a week. In addition to providing public forecasts, watches, warnings, and advisories, we also provide services for customers in the aviation community. In fact, we have at least one forecaster dedicated to serving aviation interests on-shift at all times. The purpose of this pamphlet is to highlight the services that are available to our



Terminal Aerodrome Forecasts (TAFs)

Our primary aviation responsibility at the National Weather Service Forecast Office in Brownsville is to issue Terminal Aerodrome Forecasts (TAFs). Routine TAFs are valid for a 24-hour period and issued four times daily: 00Z, 06Z, 12Z, and 18Z, and are amended (updated) as conditions require. TAFs will include information about wind speed and direction, visibility, present weather, such as fog or thunderstorms if applicable, cloud cover and heights, and low-level wind shear.

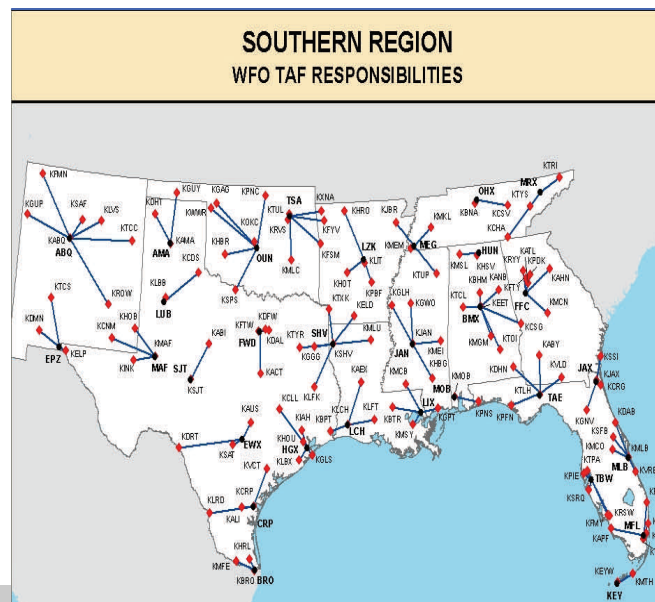


The National Weather Service in Brownsville produces TAFs for three airports in the Rio Grande Valley:

Brownsville/South Padre Island (KBRO)

Valley Int'l Harlingen (KHRL)

McAllen Miller (KMFE)



New TAF Format

On November 5, 2008, with the 0000 UTC issuance, the NWS changed the TAF format to conform to international standards outlined in ICAO Annex 3. The change included the initiating of 30-hour TAFs for high-impact U.S. Airports. To accommodate the extended TAF period, the format of ALL TAFs changed.

TAF sites within the Brownsville NWS Area of Service continue to receive TAFs for a 24-hour period. Only the time format changed, as shown below.

New TAF Format
Effective 1800 UTC 5 November 2008

Valid date of TAF
23rd at 1800 UTC through 25th at 2400 UTC

Date of PROB30 Group
25th at 0400 UTC through 25th at 0600 UTC

TAF
KXXX 241732Z 2418/2524 11006KT 4SM -SHRA BKN030
FM242300 22006KT 3SM -SHRA OVC030 PROB30 2504/2506 VRB20G35KT
1SM TSRA BKN015CB
FM 250600 250010KT 4SM -SHRA OVC050
TEMPO 2508/2511 2SM -SHRA OVC030=

Date of FM group
23rd at 2300 UTC

Date of TEMPO Group
25th at 0800 UTC through 25th at 1100 UTC

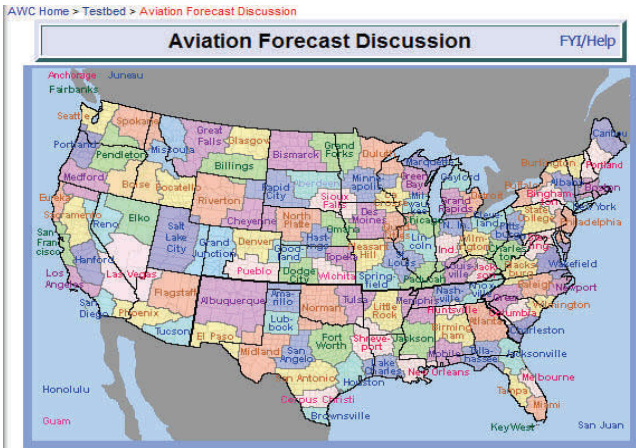
The new TAF format will include a date with every time group. This will meet the new international standard. The NWS will produce 30-hour TAFs for [these high-impact airports](#).

Airports That Receive 30-hr TAFs

- | | |
|--|---|
| KATL - The William B. Hartsfield Atlanta Int'l | KMSP - Minneapolis-St Paul Int'l/Wold-Chamberlain |
| KBDL - Bradley Int'l | KOAK - Metropolitan Oakland Int'l |
| KBOS - General Edward Lawrence Logan Int'l | KONT - Ontario International |
| KBWI - Baltimore-Washington Int'l | KORD - Chicago-O'Hare Int'l |
| KCLE - Cleveland Hopkins Int'l | KPHL - Philadelphia Int'l |
| KCVG - Covington/Cincinnati | KPIT - Pittsburgh Int'l |
| KDEN - Denver Int'l | KSAN - San Diego Int'l - Lindbergh Field |
| KDFW - Dallas/Fort Worth Int'l | KSDF - Louisville, Int'l Standiford Field |
| KDTW - Detroit Metropolitan Wayne County | KSEA - Seattle-Tacoma Int'l |
| KEWR - Newark Liberty Int'l | KSFO - San Francisco Int'l |
| KIAD - Washington Dulles Int'l | KSLC - Salt Lake City Int'l |
| KIAH - Houston - George Bush Intercontinental | KSTL - Lambert-St Lewis Int'l |
| KIND - Indianapolis Int'l | KSWF - Stewart Int'l |
| KJFK - John F. Kennedy Int'l | PANC - Ted Stevens Anchorage Int'l |
| KLAX - Los Angeles Int'l | PHNL - Honolulu |
| KMKE - General Mitchell Int'l | PAFA - Fairbanks |

Aviation Forecast Discussion

In addition to our regularly issued general forecast discussions, we also offer a separate forecast discussion specially tailored for aviation interests. Issued four times daily, the aviation forecast discussion explains the aviation forecast in greater detail than a traditional TAF would. It highlights possible hazards in the forecast that may not be mentioned in the TAF due to a low level of confidence that the event will occur.



(EXTRACTED FROM FXUS64 KBRO 232001)
NATIONAL WEATHER SERVICE BROWNSVILLE TX
 201 PM CST FRI JAN 23 2009
 GUSTY SOUTH SURFACE WINDS ALONG THE COAST WILL RELAX TONIGHT. THE WEAKER WINDS OVERNIGHT MAY ALLOW PATCHY FOG TO DEVELOP NEAR DAWN SATURDAY MORNING. A COLD FRONT ARRIVING SATURDAY AFTERNOON WILL CAUSE WINDS TO SWITCH TO NORTH OR NORTHEAST...BUT ONLY AT MODERATE STRENGTH. FEW TO SCATTERED LOW CLOUDS MAY DEVELOP...BUT SIGNIFICANT WEATHER IS NOT EXPECTED. CEILINGS...IF THEY DEVELOP... SHOULD REMAIN VFR.



Additional Information

Internet Links:

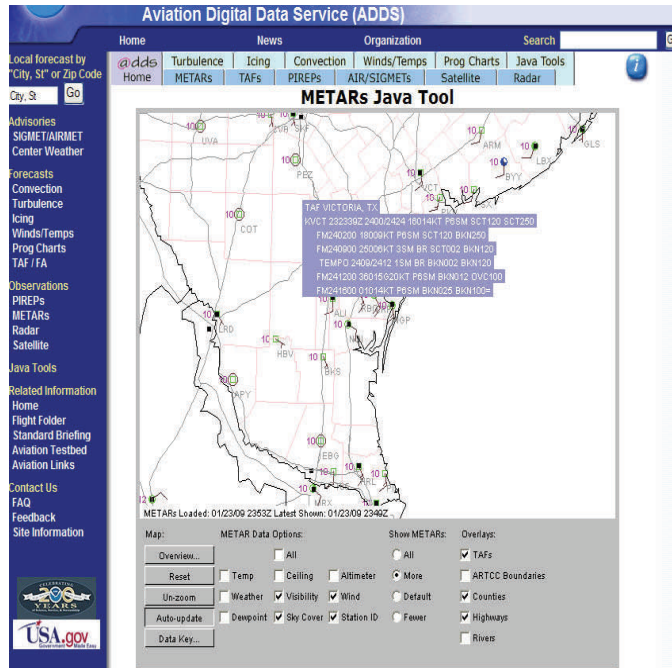
NWS Brownsville Homepage - www.weather.gov/rqv

Find your local weather forecast, watches, warnings, and advisories here.

Aviation Weather Center - www.aviationweather.gov

From TAFs, aviation AFDs, SIGMETs, Convective SIGMETs, AIRMETs, observations, forecast models, and anything else related to aviation weather, you'll find it here.

Snapshot of the Aviation Weather Center's JAVA Tool webpage.



Aviation Weather Center



Contact Us

Aviation Program Manager: Geoffrey Bogorad
 E-mail: Geoffrey.Bogorad@noaa.gov
Meteorologist-In-Charge: Nezette Rydell
 E-mail: Nezette.Rydell@noaa.gov
Phone: 956-504-3084 (Mon-Fri, 8am-4pm)