



HURRICANE HARVEY BRIEFING

11 AM CDT
Friday August 24th 2017

Prepared by:
Barry Goldsmith



Overview

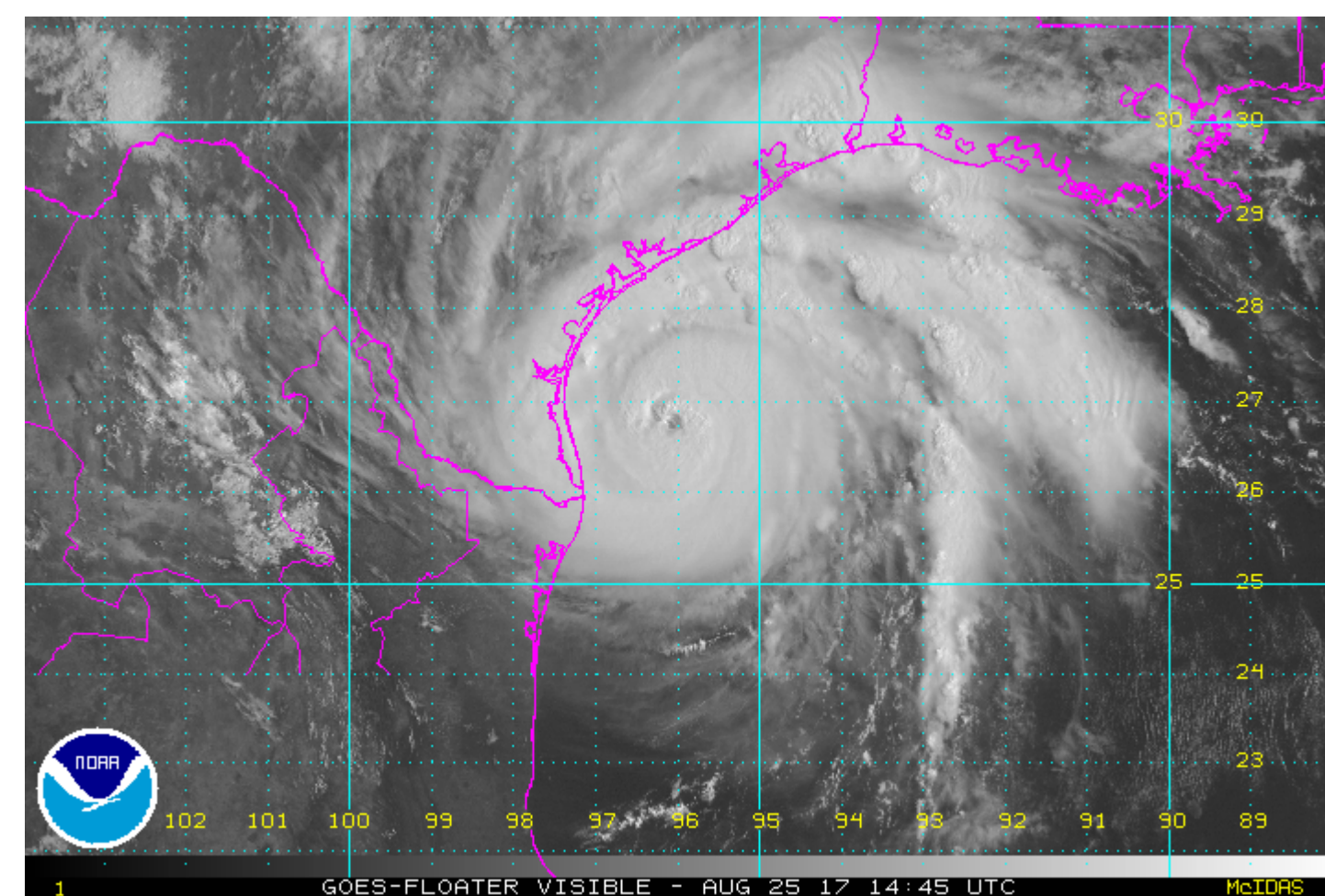
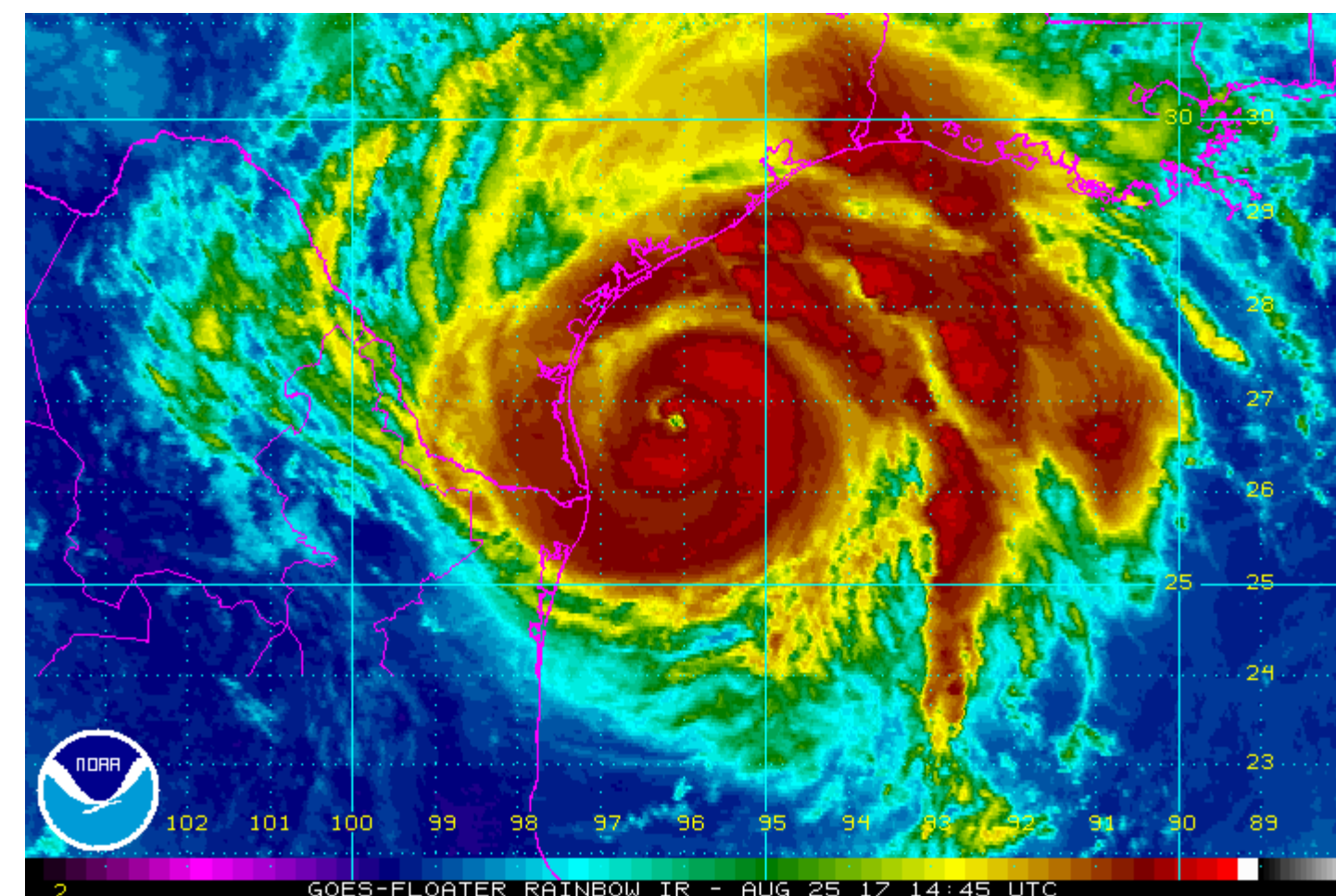


Brownsville/RGV

WEATHER FORECAST OFFICE

Hurricane Harvey

- **The RGV has dodged a bullet!**
- Harvey is a strong Category 2 Hurricane, Likely to Become a Category 3 Storm Before Landfall Along Coastal Bend
- 1030 AM Center Location: 90 miles east of Port Mansfield, or 95 mile southeast of Corpus Christi, moving northwest at around 10 mph
- Remaining impacts:
 - Isolated nuisance flooding of poor drainage areas through sunset mainly east of US 77/IH 69C (Port Isabel/Port Mansfield/SPI)
 - Tides will recede this afternoon and surf will “run out” but waves will still be rough
 - 50 to 60 mph gusts at beach/bay with some minor damage and power outages; 40 to 45 mph gusts still possible Brownsville/Raymondville corridor through late afternoon
 - Little to no impacts for Hidalgo County
- Main heavy rainfall timing: Through 3 PM
- Main Wind Timing: Through Sunset (buffer: 3 AM through 10 PM)



945 AM Aug. 25 Satellite

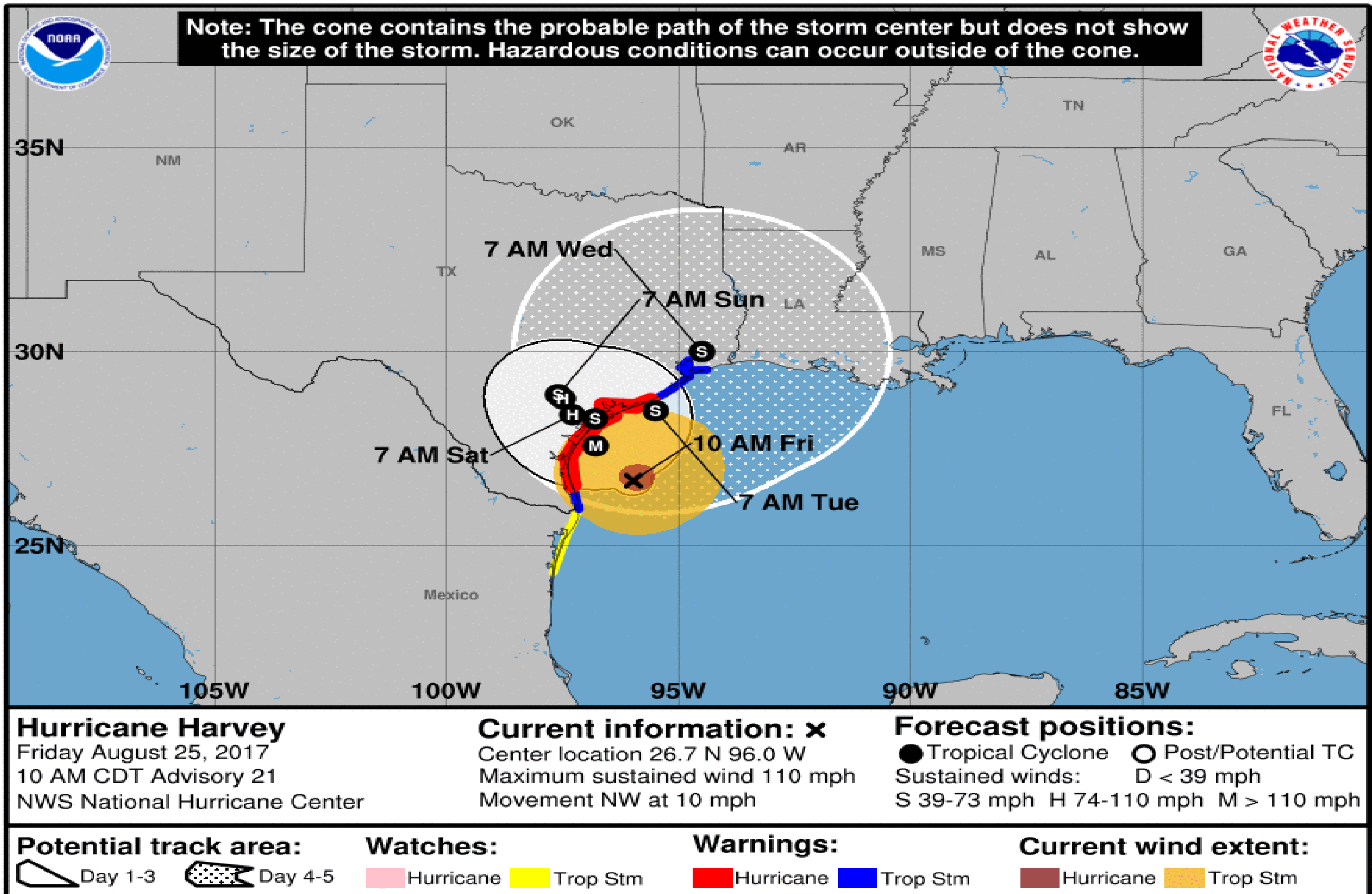
Track and Warning/Watches



Brownsville/RGV

WEATHER FORECAST OFFICE

Hurricane Harvey



Prime Impact: Surf and Run Up



Brownsville/RGV

WEATHER FORECAST OFFICE

Hurricane Harvey



7-8 AM Aug. 25 on South Padre Isl.

- Water into the dunes at SPI City beaches, but not to seawalls; water to base of dunes at Isla Blanca
- Will continue through early afternoon before swells slow down and change direction
- Water likely farther into the dunes at Padre Island Seashore along Kenedy County Coast
- “Heavy” surf through the day
- Surf “running” out and exposing the full beach by mid to late afternoon/early evening based on current track and enhanced offshore flow

Prime Impact: Tide

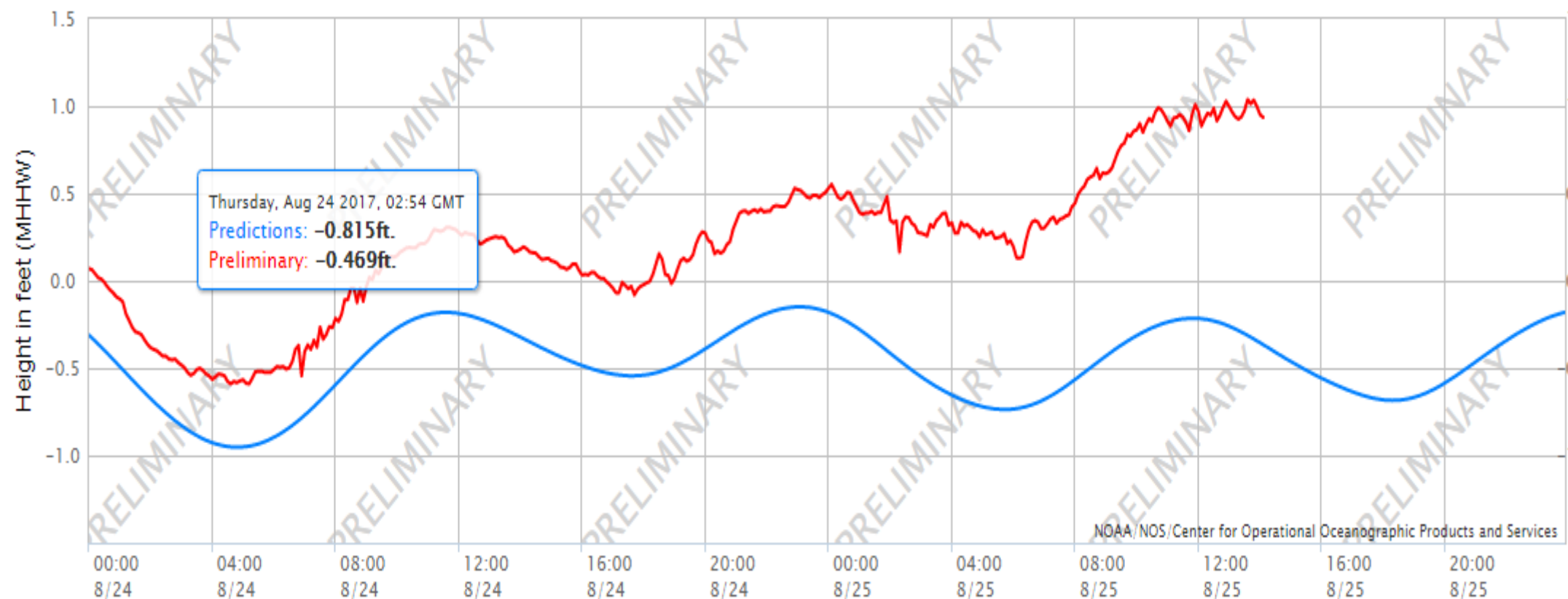
Hurricane Harvey



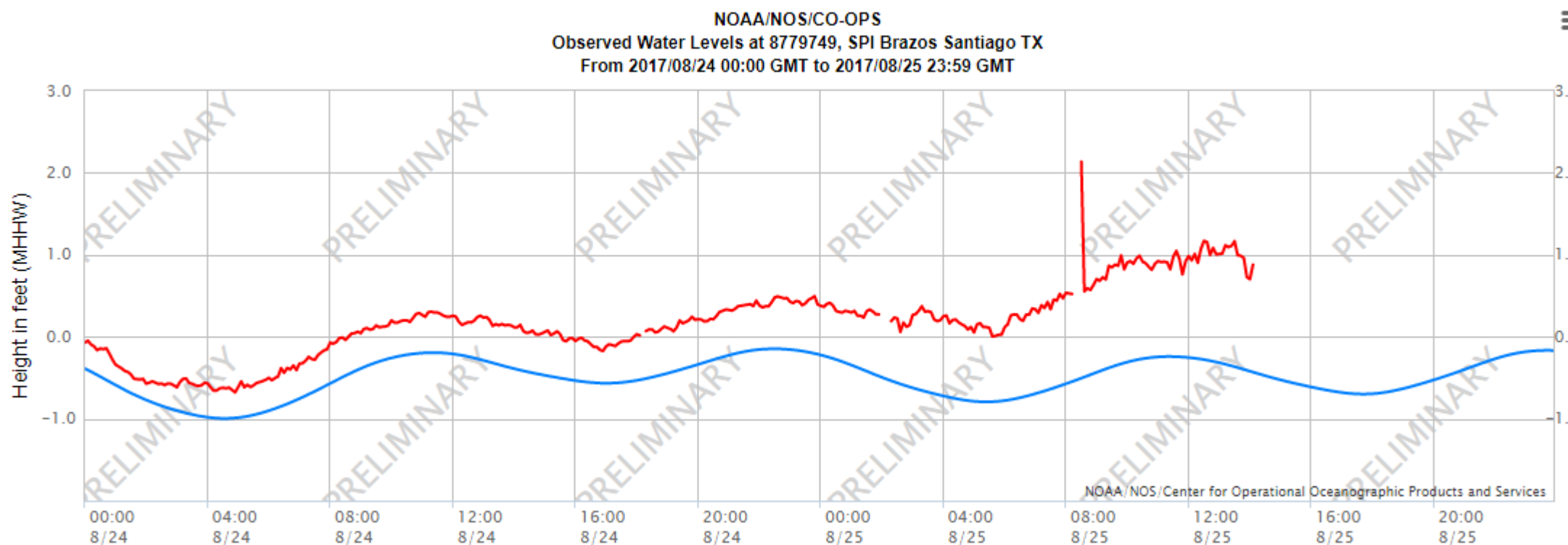
Brownsville/RGV

WEATHER FORECAST OFFICE

Observed Water Levels at 8179170, Port Isabel TX
From 2017/08/24 00:00 GMT to 2017/08/25 23:59 GMT



NOAA/NOS/CO-OPS
Observed Water Levels at 8779749, SPI Brazos Santiago TX
From 2017/08/24 00:00 GMT to 2017/08/25 23:59 GMT



- Tides estimated 1 foot above ground level at inshore gages; 2 feet above ground level on beach
- Will “run out” during Fri afternoon
- Could be some rises along Laguna side of SPI, and continue to lap at barriers due to combination of coastal tide and wind wave

Peak tides just inshore from Port Isabel and Brazos Santiago.

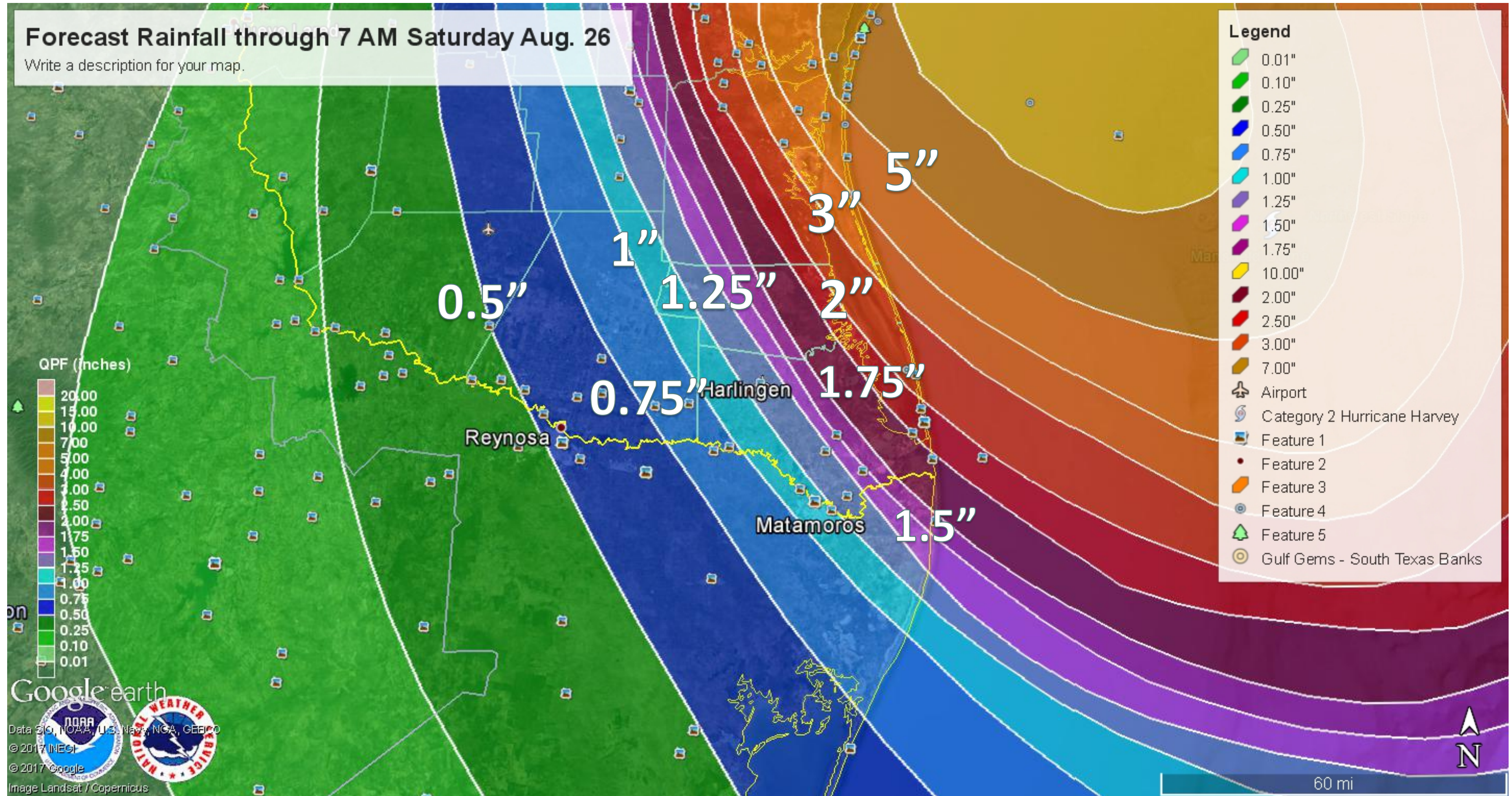
Potential Impact/Actions – Rain Friday



Brownsville/RGV

WEATHER FORECAST OFFICE

Hurricane Harvey



- Rainfall: Cameron/Willacy: 1-2", locally 3" (coast only). 2 to 6" Kenedy, highest along coast
- Potential impact: nuisance flooding mainly at the beaches and perhaps around Sarita (Kenedy County)

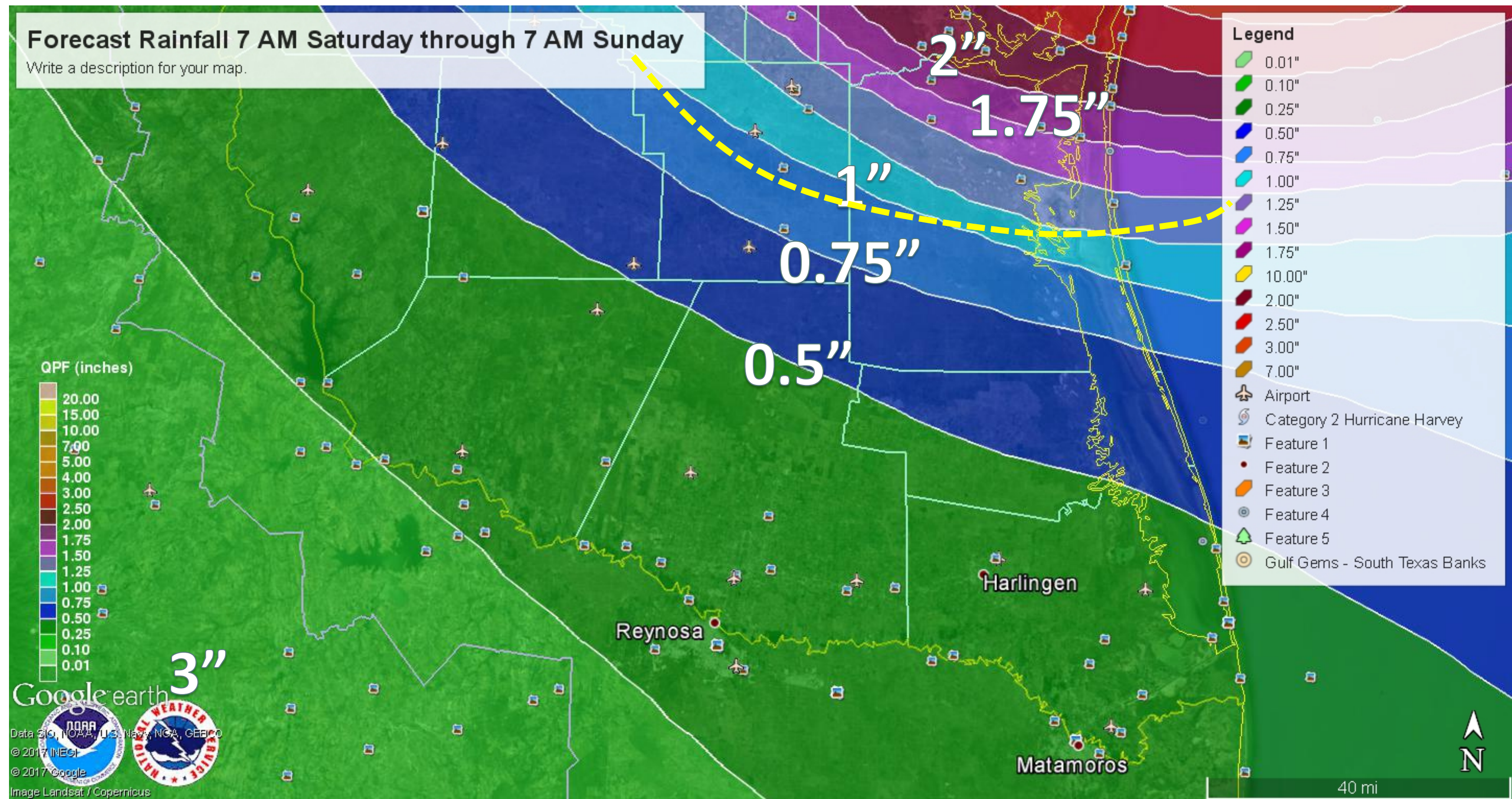
Potential Impact – Saturday Rain?



Brownsville/RGV

WEATHER FORECAST OFFICE

Hurricane Harvey



- RGV should see some rain **over weekend**, but not enough to be anything more than nuisance
- Area of concern Falfurrias to Sarita for heavier bands as Harvey spin around in South Texas



- Coastal Cameron/Willacy:
 - **35 to 45 mph SPI (from the west of northwest) with a few gusts to 55 mph through 5 PM** Minor damage to unfastened lightweight objects is possible along the shore.
 - **40 to 50 with a few gusts to 60 mph Port Mansfield north.** Minor damage to some trees and to unfastened/tied down object such as tents and temporary structures.
Scattered power outages
- Remainder of Cameron/Willacy: 20 to 30 mph with a few gusts to 40 mph through 3 PM.
- No wind issues in Hidalgo County.



- **The RGV dodged a bullet**
- Conditions will slowly improve near the coast by late afternoon
- Devastating conditions somewhere along the Coastal Bend, now favoring areas north of Corpus Christi (Rockport, Matagorda, Seadrift) but still significant wind, surge, and flood impacts around Corpus.
- Feet of rain (20 to 30+ inches) likely to fall somewhere from Victoria through Houston, which could be historical and catastrophic for these areas



HURRICANE HARVEY BRIEFING

This is the FINAL Update

Please contact WFO Brownsville/Rio Grande Valley at
956-504-1432 ext. 2

You can get the latest graphics and information on this storm at hurricanes.gov

