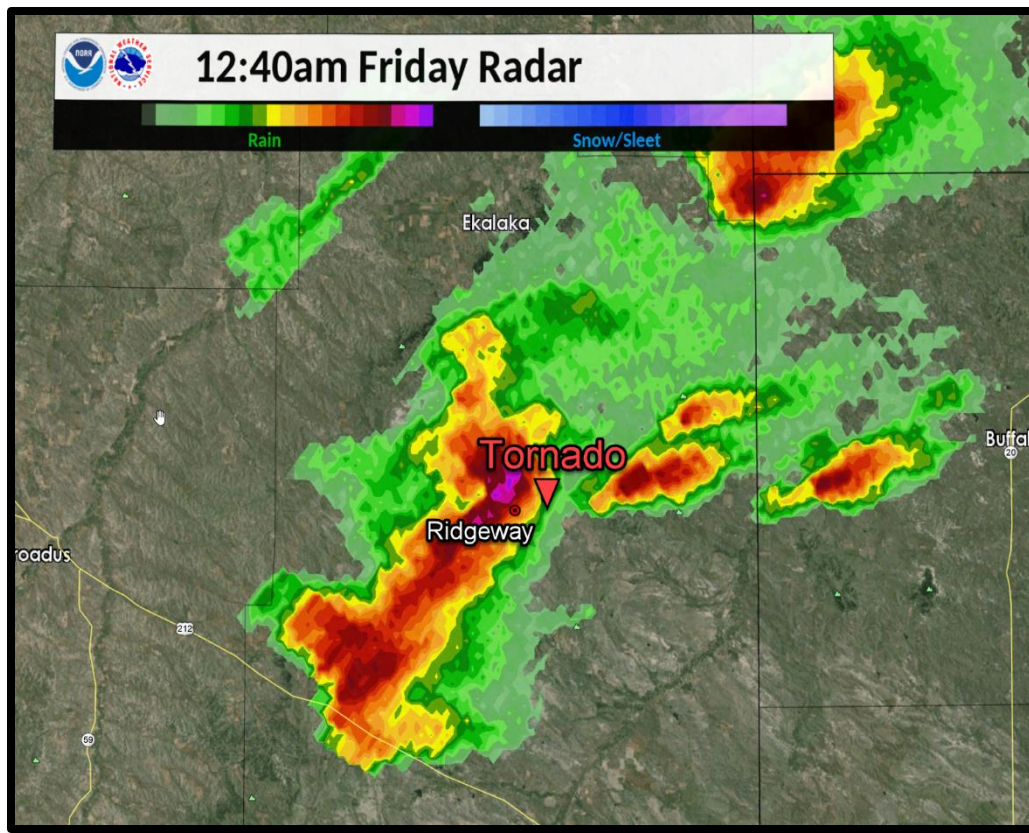


Tornado - July 19th, 2019

Preliminary Summary

During the early morning of July 19, 2019 at 12:44am, a tornado briefly touched down 4 miles northeast of Ridgeway, MT in Carter County in southeast MT.



The tornado was approximately 50 yards wide and on the ground for nearly 200 yards. The tornado was classified as an EF-1 (winds 86-110mph).

There was considerable damage to buildings on a local ranch. A shop building had 2 doors blown in and roof damage. Two other sheds had significant roof damage. Several metal rooftops were torn off and peeled back. A small garage was destroyed with a vehicle displaced inside, turned and moved by a couple feet. Several trees were snapped (approximately 1 foot diameter), with other smaller trees blown over or uprooted.



Summary of Carter County Tornadoes

July 19, 2019

The following information is based on NWS storm survey results.






Tornado (EF-1):

Location: 45.502719, -104.450348

Max Estimated Wind Speed: 110 mph (EF-1)

Width: 50 yards

Length: 200 yards

EF Rating	Wind Speeds	Expected Damage
EF-0	65-85 mph	<p>'Minor' damage: shingles blown off or parts of a roof peeled off, damage to gutters/siding, branches broken off trees, shallow rooted trees toppled.</p> 
EF-1	86-110 mph	<p>'Moderate' damage: more significant roof damage, windows broken, exterior doors damaged or lost, mobile homes overturned or badly damaged.</p> 
EF-2	111-135 mph	<p>'Considerable' damage: roofs torn off well constructed homes, homes shifted off their foundation, mobile homes completely destroyed, large trees snapped or uprooted, cars can be tossed.</p> 
EF-3	136-165 mph	<p>'Severe' damage: entire stories of well constructed homes destroyed, significant damage done to large buildings, homes with weak foundations can be blown away, trees begin to lose their bark.</p> 
EF-4	166-200 mph	<p>'Extreme' damage: Well constructed homes are leveled, cars are thrown significant distances, top story exterior walls of masonry buildings would likely collapse.</p> 
EF-5	> 200 mph	<p>'Massive/incredible' damage: Well constructed homes are swept away, steel-reinforced concrete structures are critically damaged, high-rise buildings sustain severe structural damage, trees are usually completely debarked, stripped of branches and snapped.</p> 