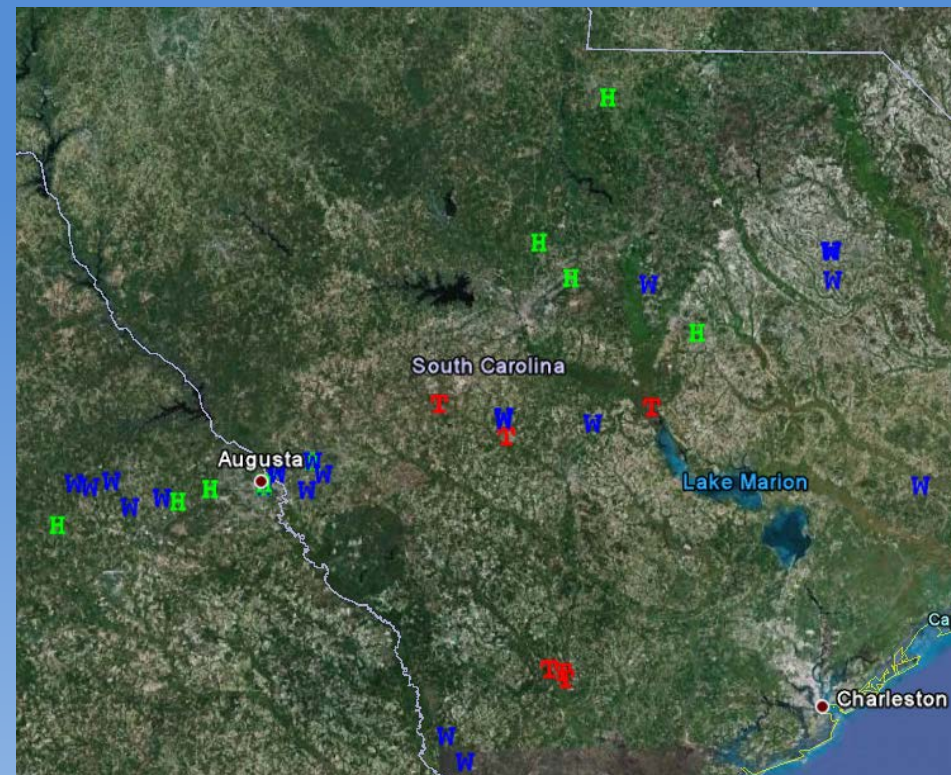


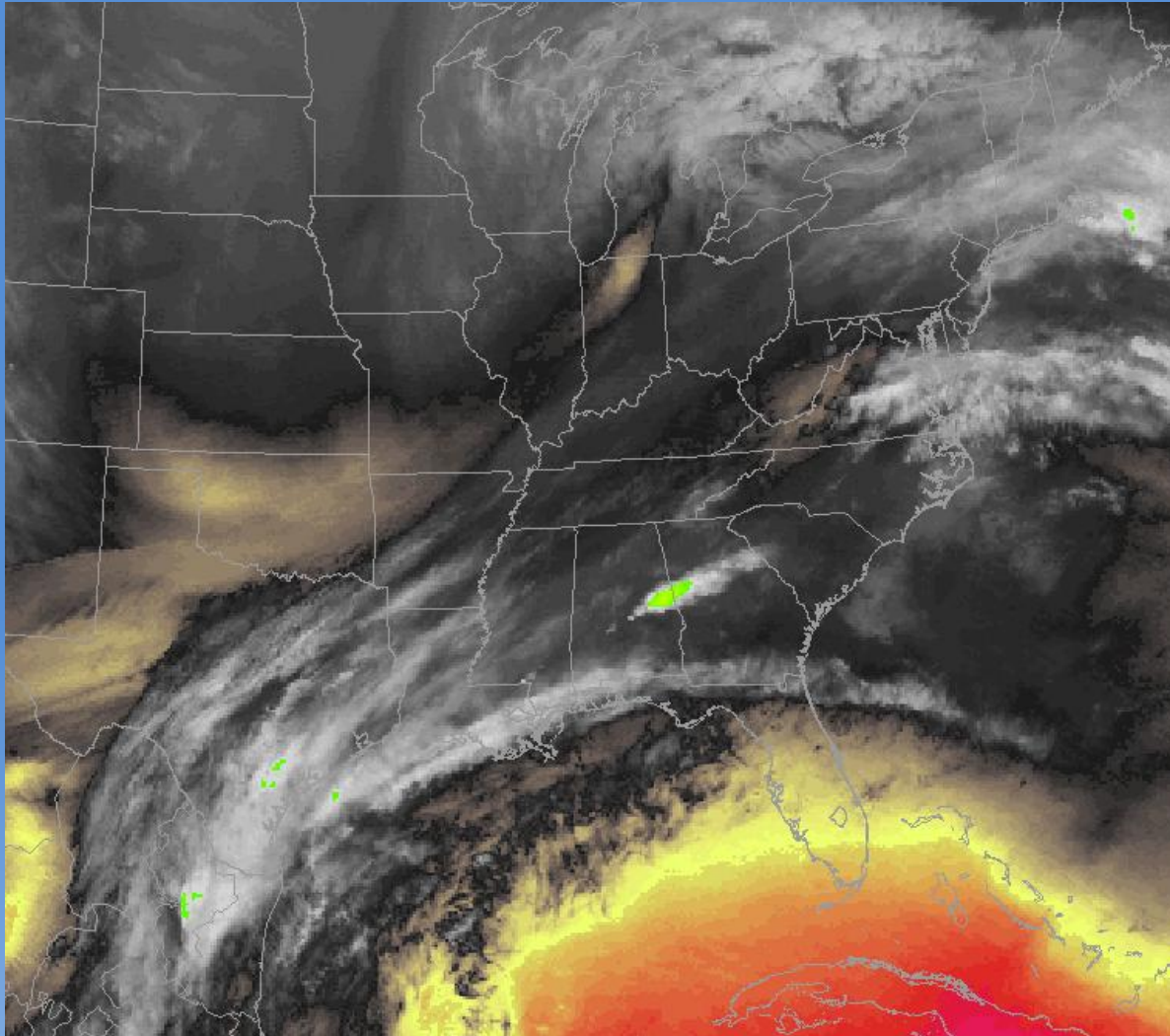
# MIDLANDS AND CENTRAL SAVANNAH RIVER AREA SEVERE WEATHER EVENT FEBRUARY 24, 2012



# WHAT HAPPENED

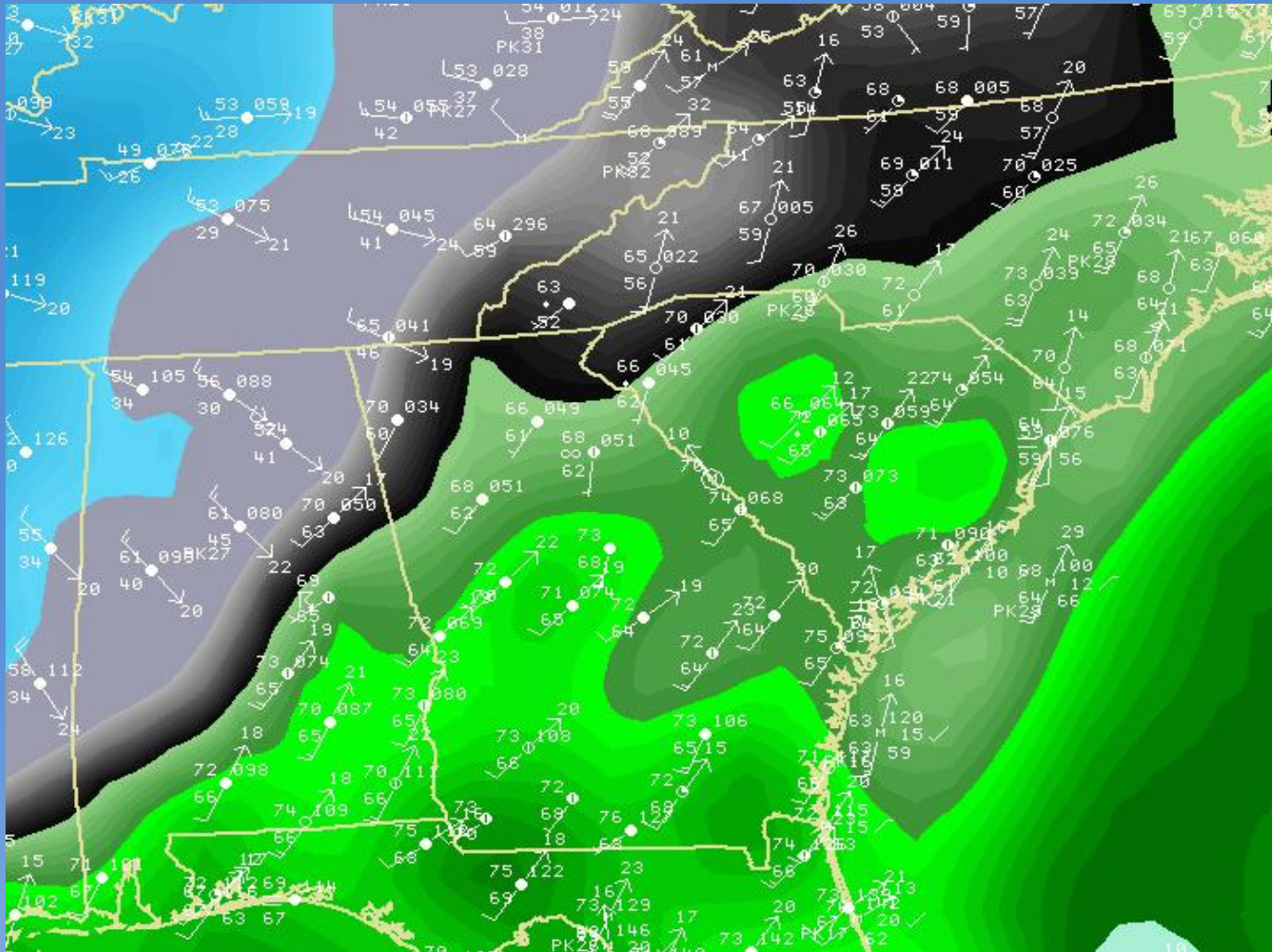
- Line of severe thunderstorms pushed across the Midlands and CSRA Friday afternoon
- Multiple reports of quarter to golf ball size hail
- Straight line wind gusts up to 80 mph in the Augusta area
- Two confirmed tornadoes (EF2 north of Wagener, SC and EF0 west of Pinewood, SC)

# WATER VAPOR IMAGERY



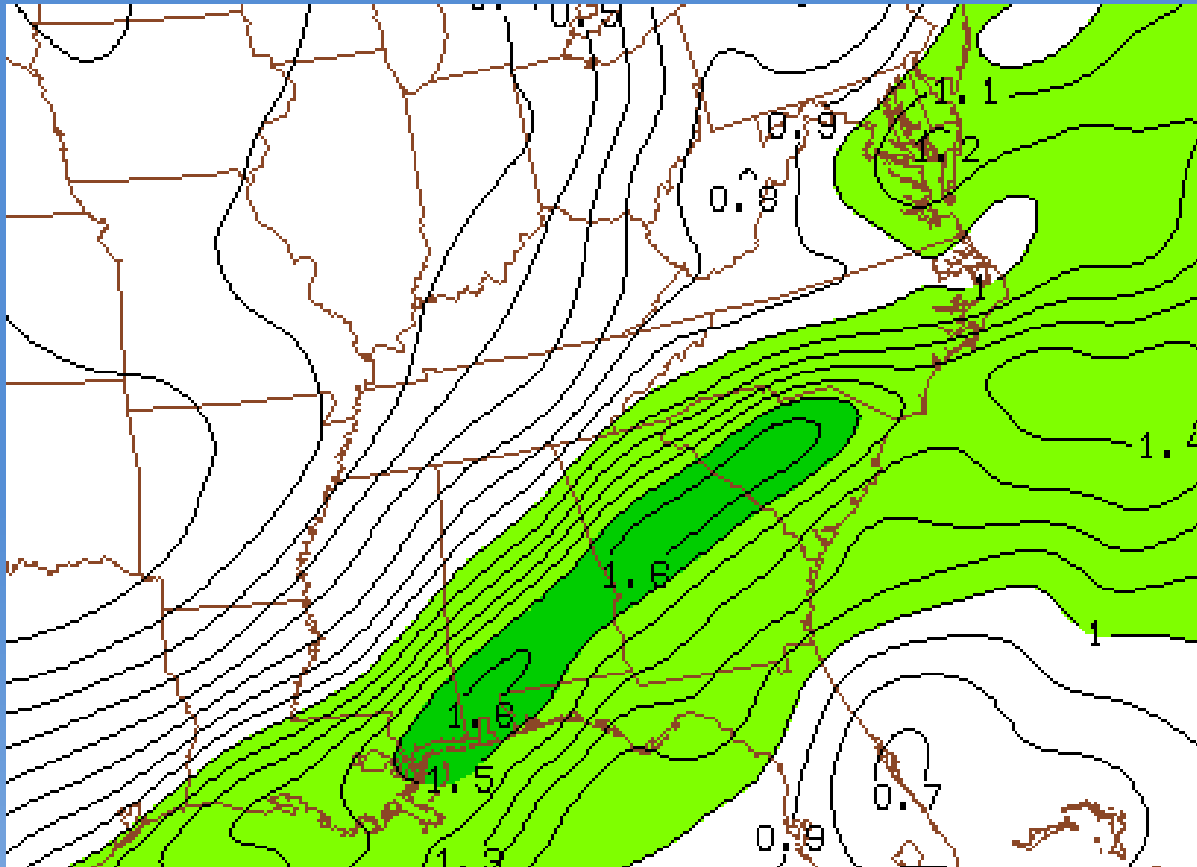
8:00 AM Water Vapor Satellite image showing an upper level low pressure system moving across Michigan with moist southwesterly winds across the TN valley and southeastern states

# SURFACE MOISTURE



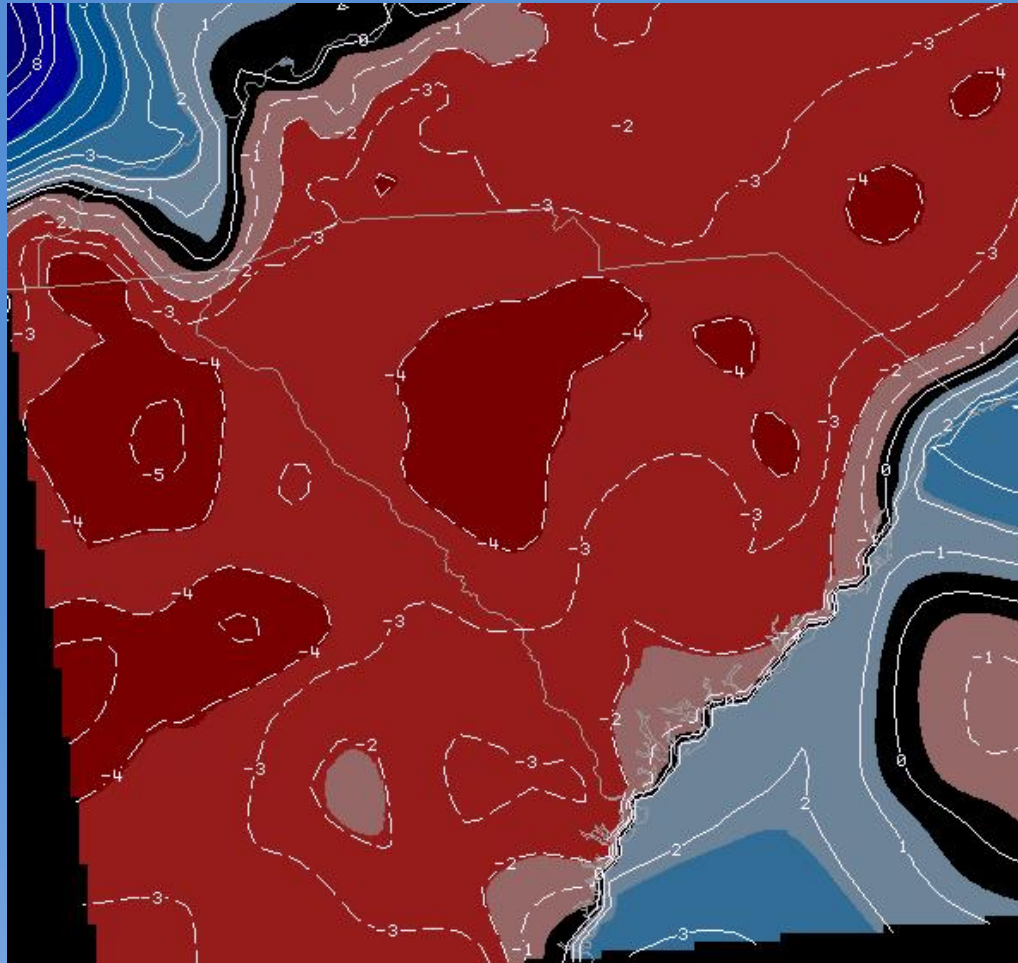
9:00 AM Surface map showing observations with the background image depicting the surface dewpoints. Southwesterly winds ahead of an approaching cold front allowed dewpoints to rise into the lower to mid 60s, quite high for a February morning.

# ATMOSPHERIC MOISTURE



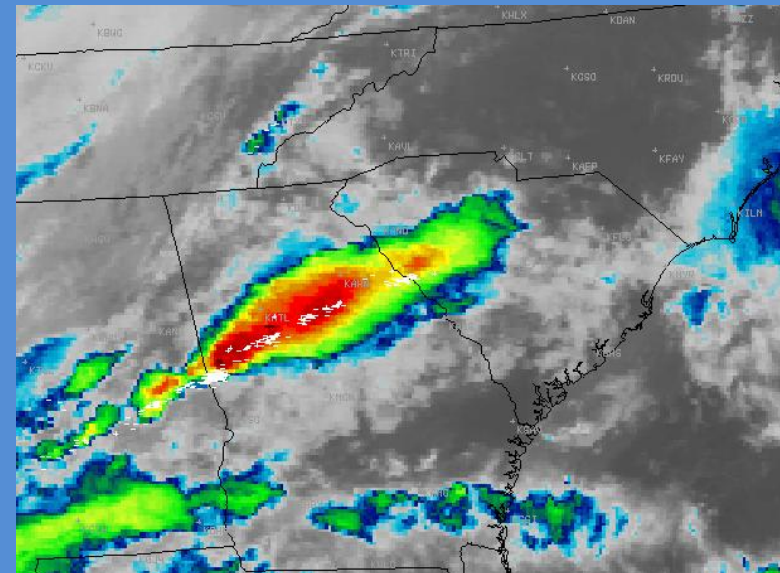
11 AM Precipitable Water map showing an axis of higher atmospheric moisture over the Midlands and CSRA, which helped to fuel and sustain thunderstorms.

# ATMOSPHERIC INSTABILITY

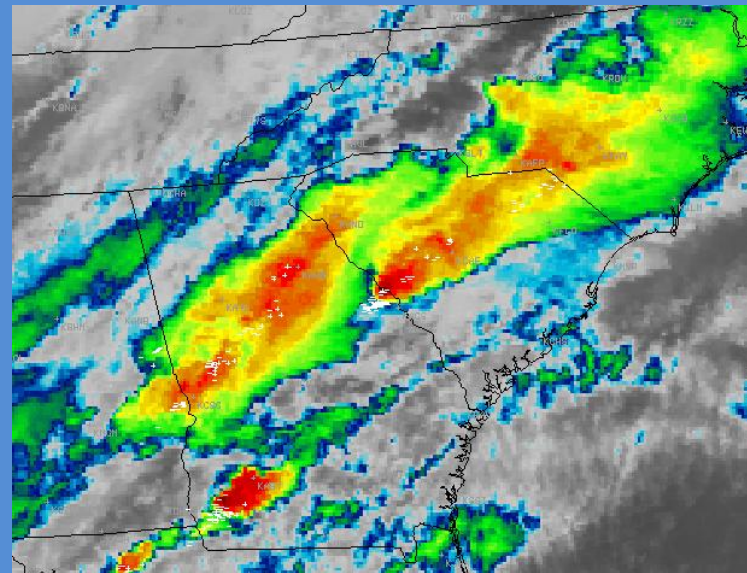


10 AM Lifted Index map showing the amount of instability of the region. More negative values of Lifted Index indicate a more unstable atmosphere.

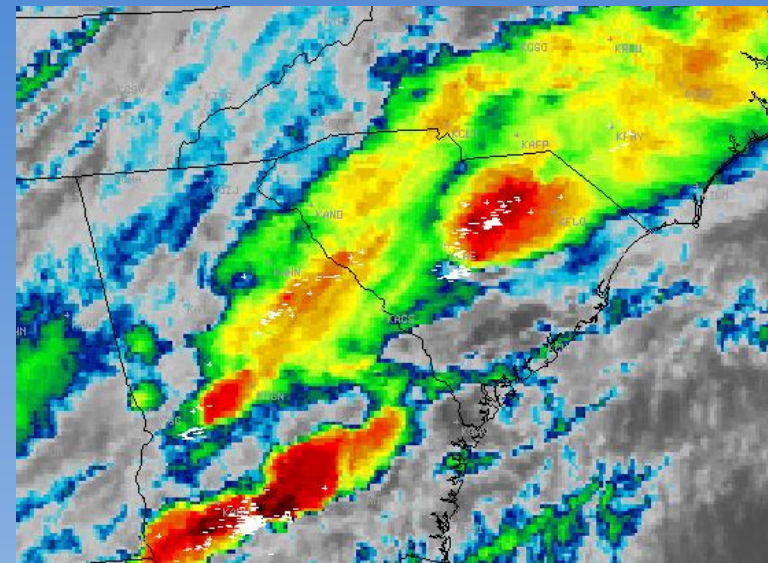
# INFRARED SATELLITE IMAGERY



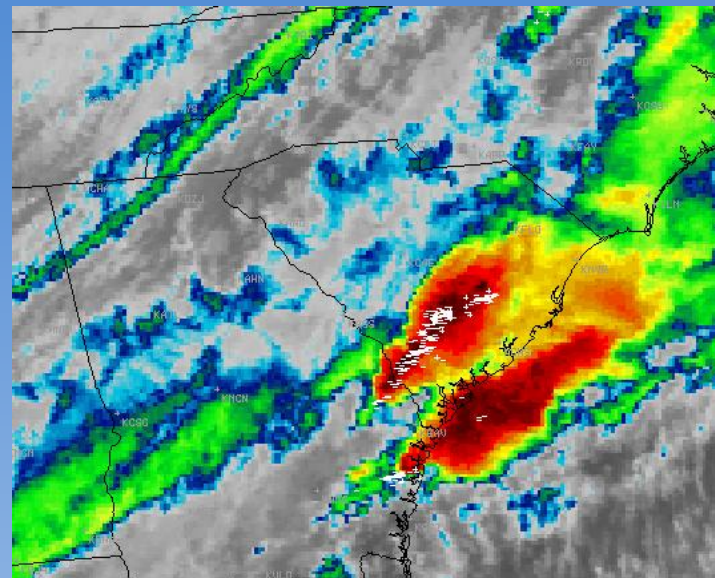
**9:00 AM**



**12:30 PM**

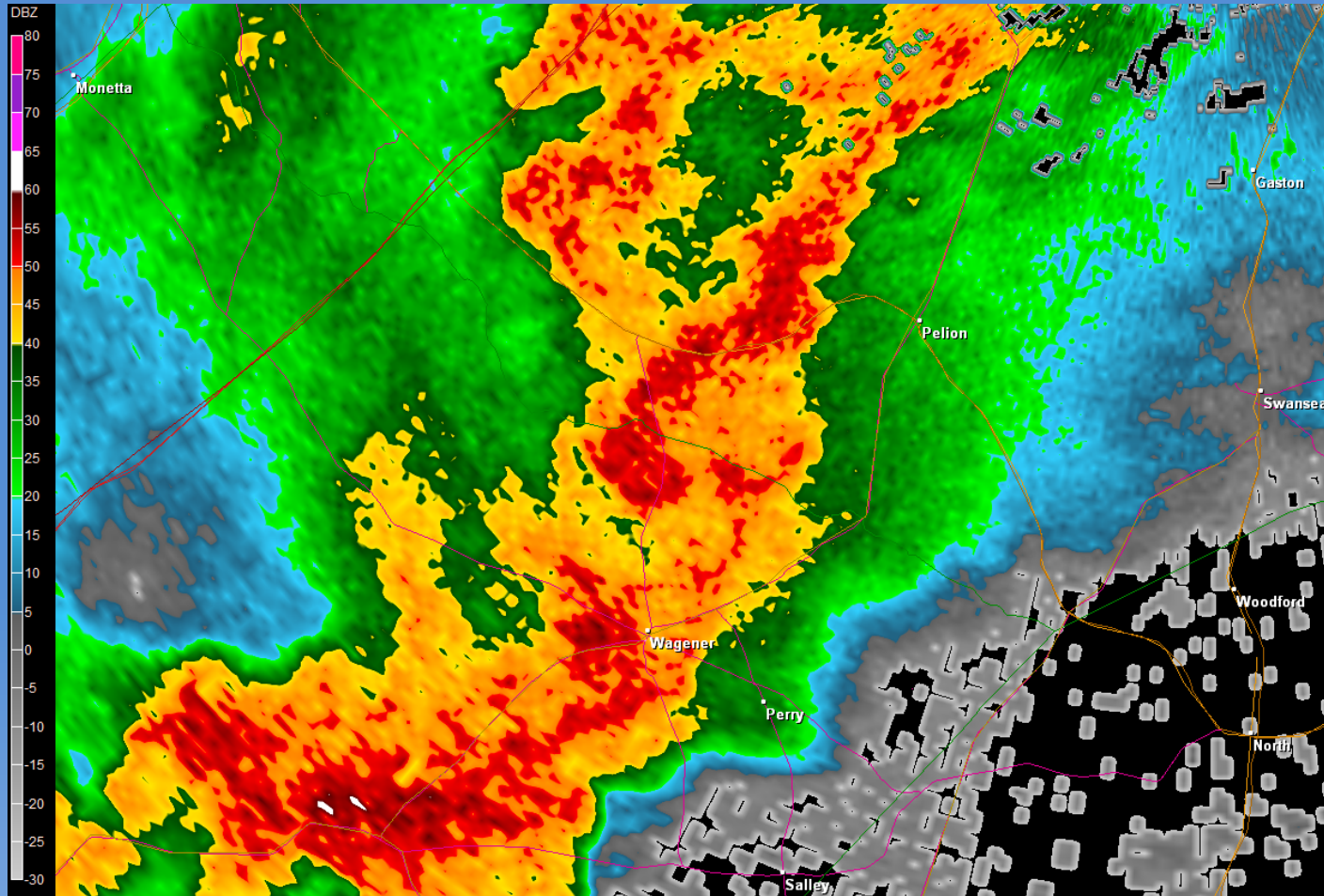


**1:30 PM**



**5:00 PM**

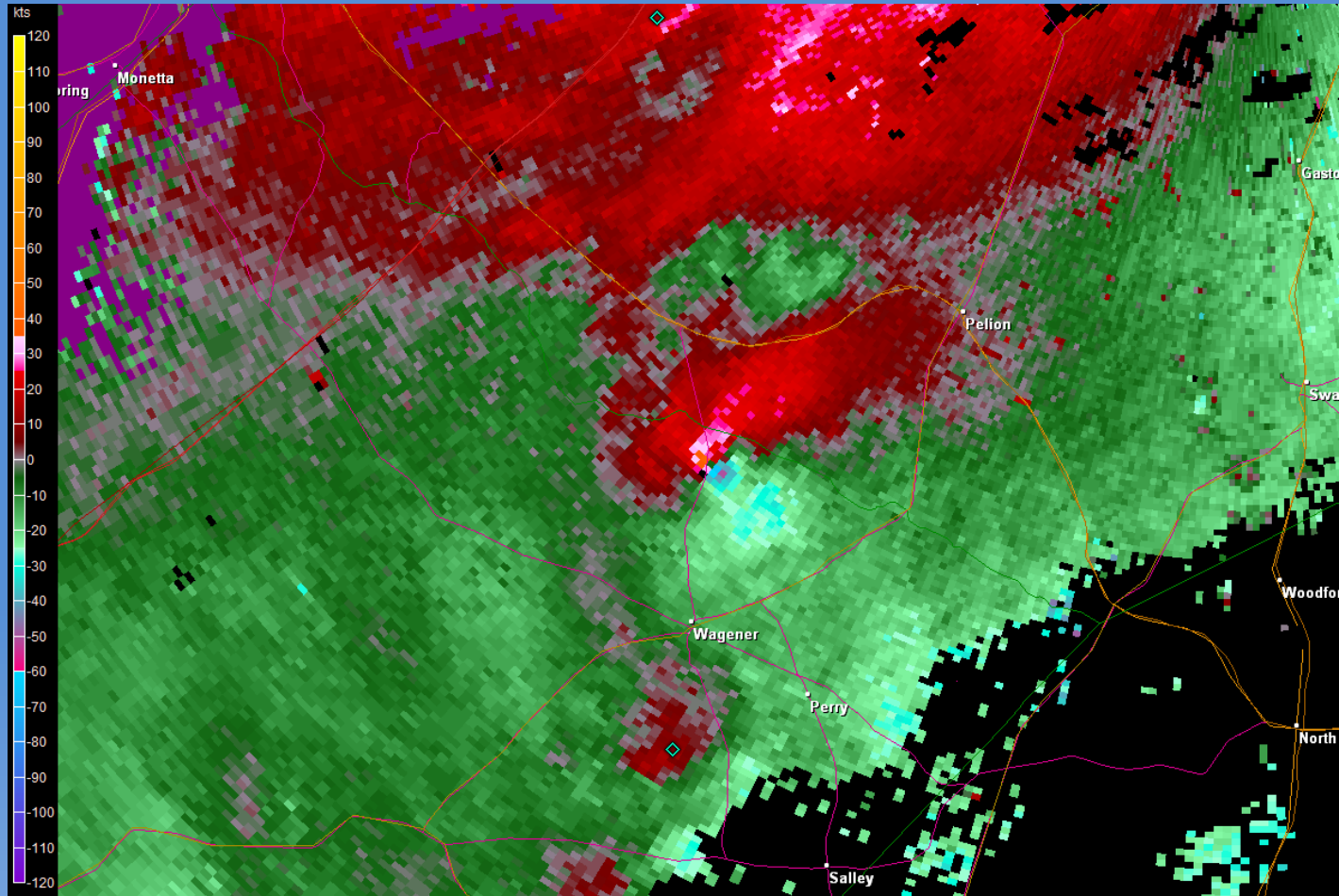
# KCAE 88D 0.5° REFLECTIVITY



Base reflectivity image near the time of the tornado that touched down along the Lexington and Aiken County line

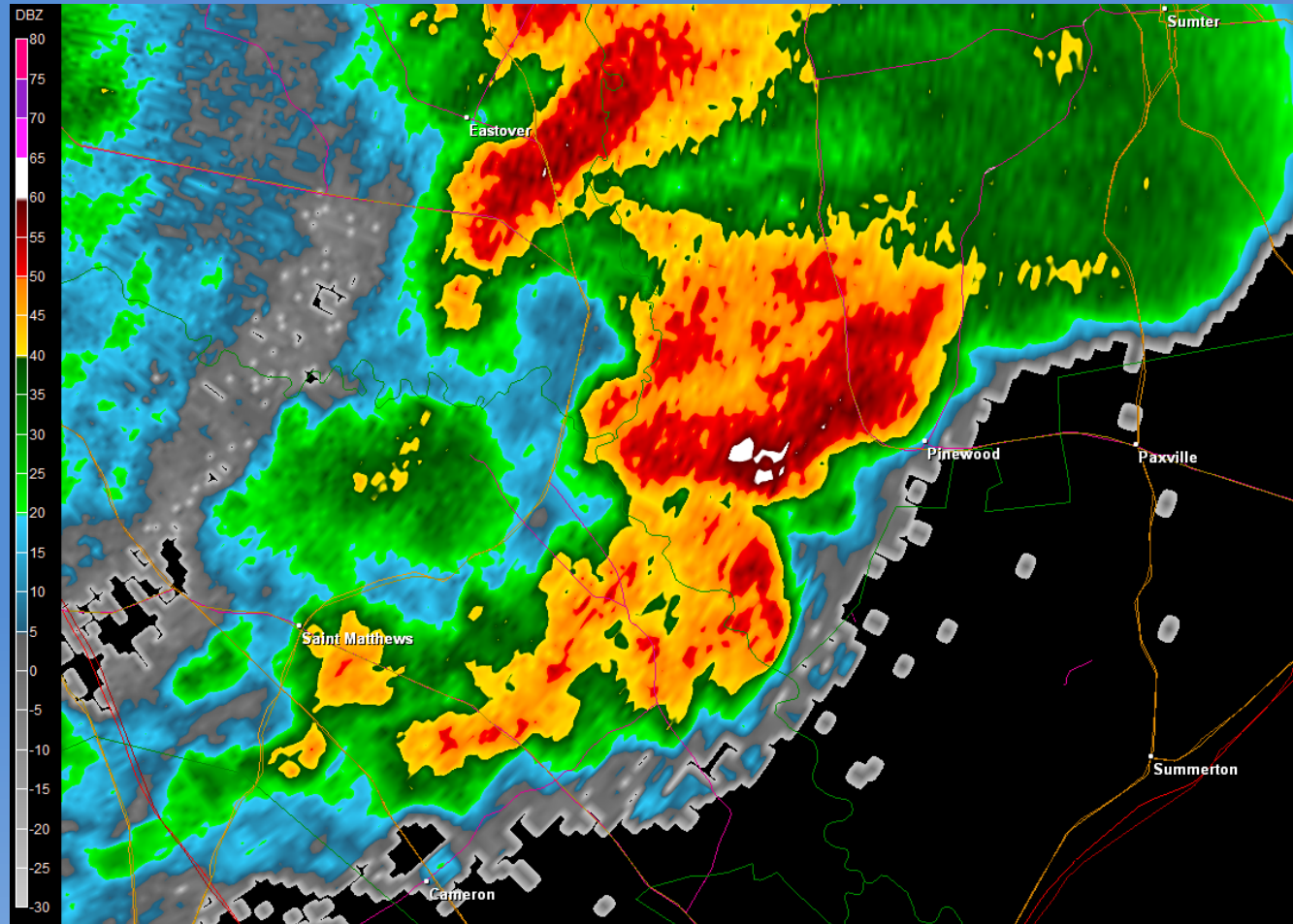


# KCAE 88D 0.5° STORM RELATIVE VELOCITY



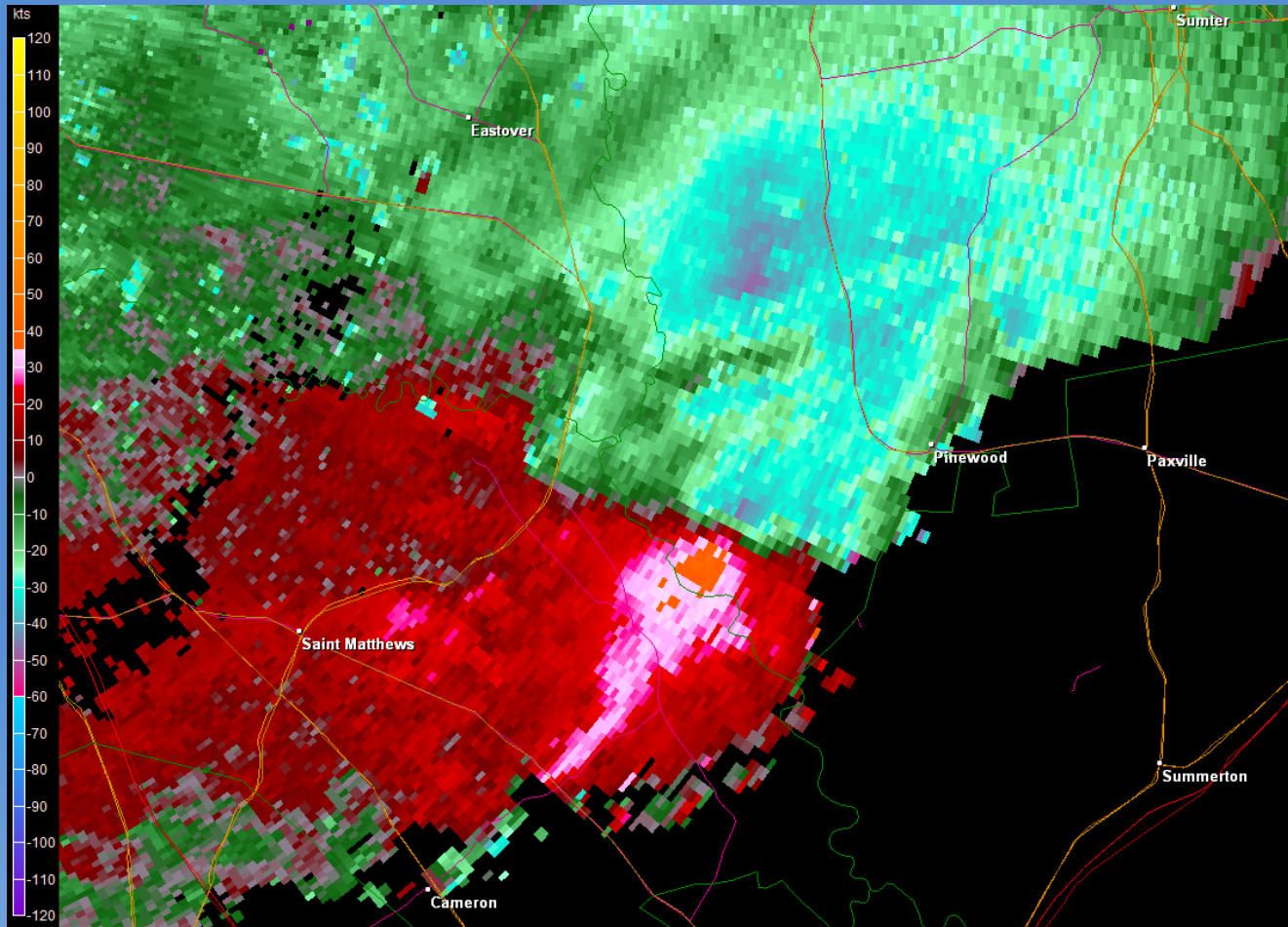
Base storm relative velocity image near the time of the tornado that touched down along the Lexington and Aiken County line. Note the strong couplet north of Wagener. Damage along the path of this tornado was rated EF-2 with a path width of 100 yards and length 8 miles.

# KCAE 88D 0.5° REFLECTIVITY



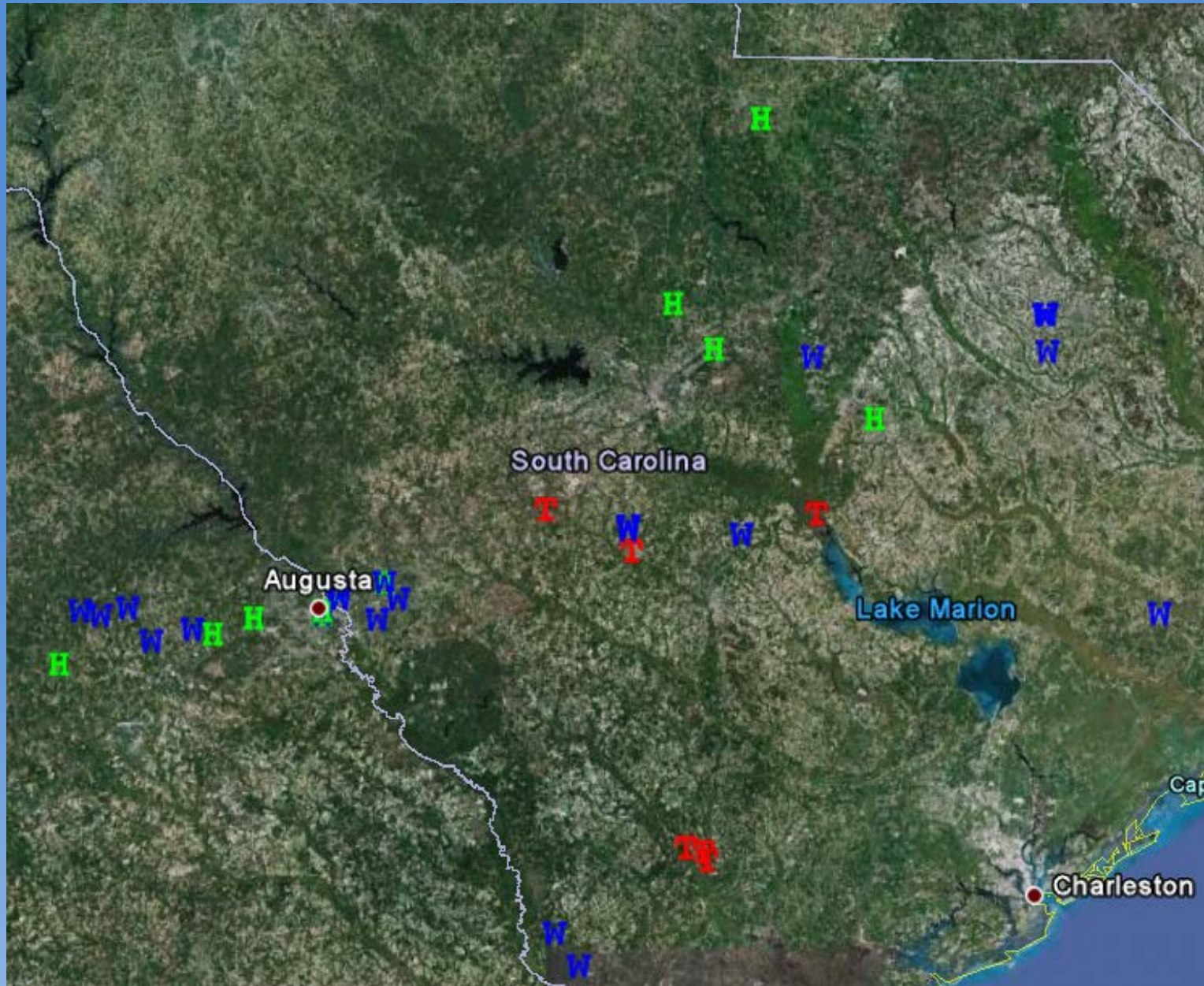
Base reflectivity image near the time of the tornado that touched down west of Pinewood.

# KCAE 88D 0.5° STORM RELATIVE VELOCITY



Base storm relative velocity image near the time of the tornado that touched down west of Pinewood. Note the couplet southwest of Pinewood. Tornado damage in this area was rated EF-0.

# STORM REPORTS



# STORM DAMAGE PHOTOS



Damage associated with the tornado near Wagener

# STORM DAMAGE PHOTOS



Damage associated with the tornado near Wagener

# STORM DAMAGE PHOTOS



Damage associated with the tornado near Wagener

# STORM DAMAGE PHOTOS



Damage associated with the tornado near Wagener