

Central Iowa Nocturnal QLCS Tornadoes

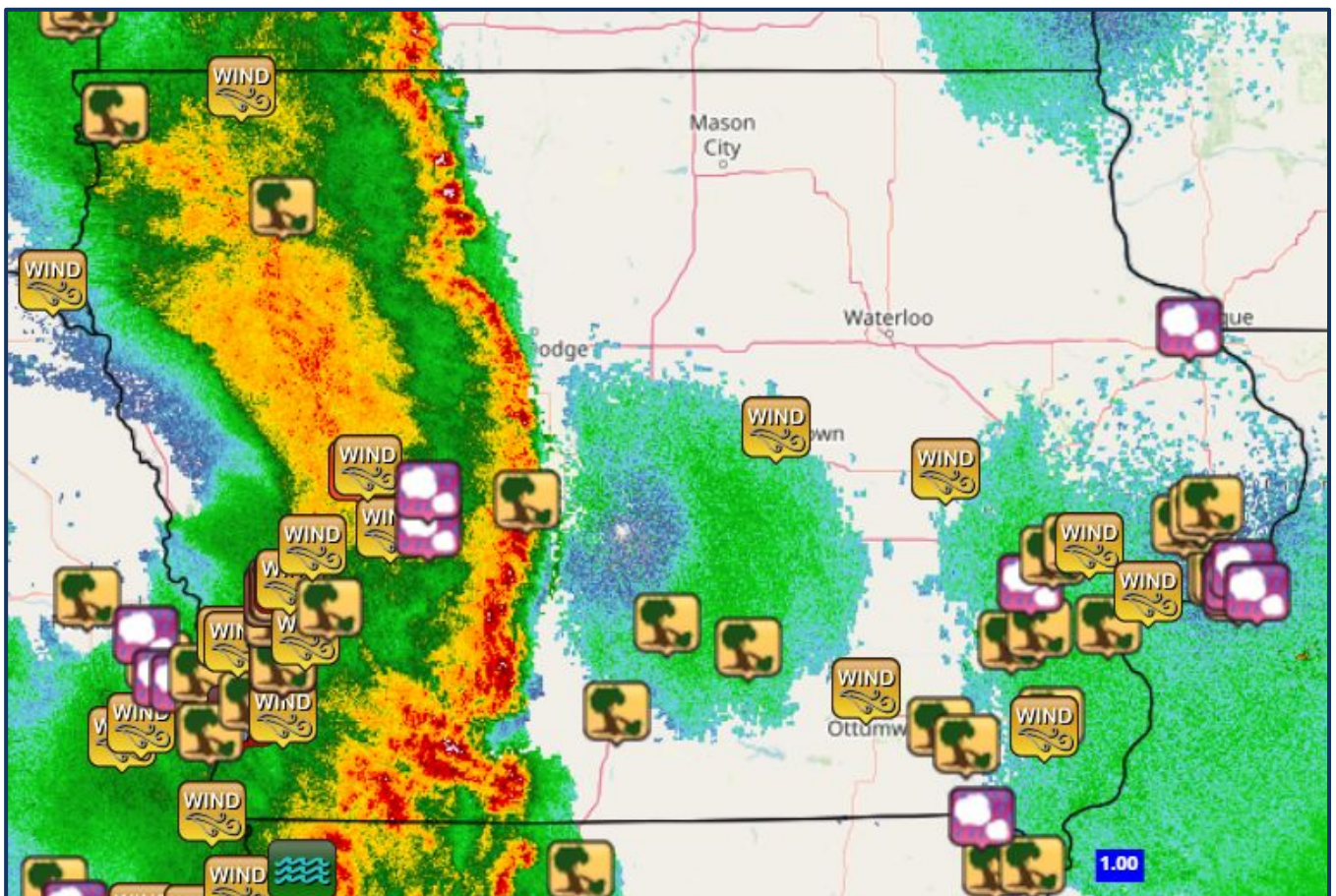
May 06, 2024

Picture credit: NWS Des Moines

Event Summary

A line of storms, often called a squall line or quasi-linear convective system (QLCS), swept across Iowa late on May 6th and into the early morning hours of May 7th. The line was strongest in southern Iowa where the environment was more supportive of severe weather. Damaging winds and a few embedded tornadoes occurred as the line swept across the state.

Wind and Hail Reports



[Click image to view interactive storm report map.](#)

Map courtesy of the Iowa Environmental Mesonet

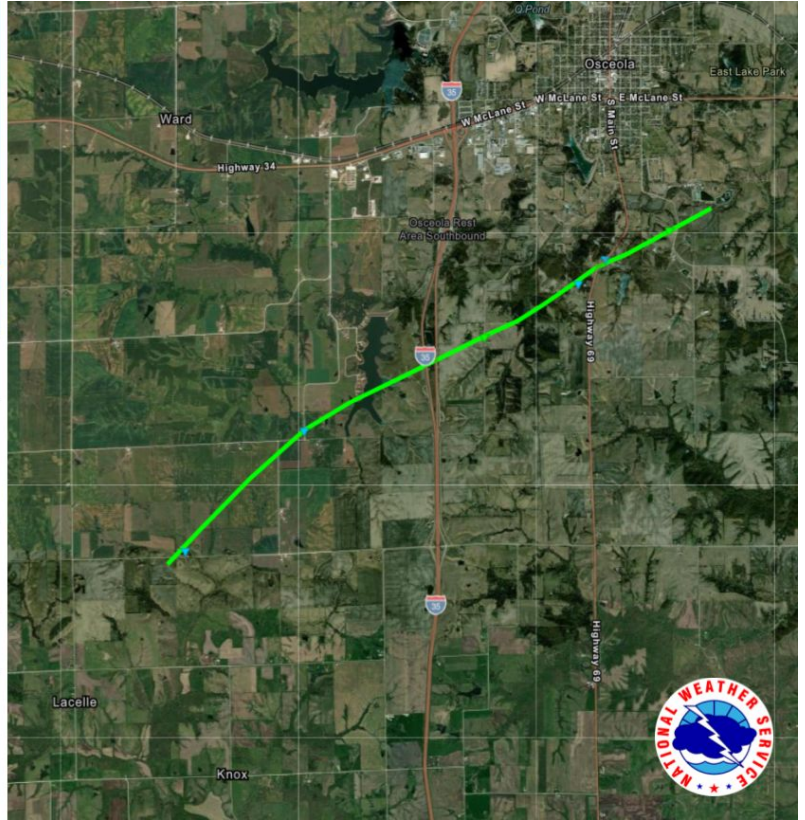
Tornado 1 - Osceola



Preliminary Damage Survey Results

Osceola Tornado - Clarke County

Date	May 7, 2024
Time (Local)	12:38-12:46 AM CDT
EF Rating	EF1
Est. Peak Winds	95-100 mph
Path Length	6.23 miles
Max Width	80 yards
Injuries/Deaths	None



Tornado 2 - Woodburn



Preliminary Damage Survey Results

Woodburn Tornado - Clarke County

Date	May 7, 2024
Time (Local)	12:53-12:55 AM CDT
EF Rating	EF0
Est. Peak Winds	75-80 mph
Path Length	2.02 miles
Max Width	80 yards
Injuries/Deaths	None



Tornado 3 - Prairie City



Preliminary Damage Survey Results

Prairie City Tornado - Jasper County

Date	May 7, 2024
Time (Local)	1:35-1:36 AM CDT
EF Rating	EF0
Est. Peak Winds	75-80 mph
Path Length	0.14 miles
Max Width	30 yards
Injuries/Deaths	None

