

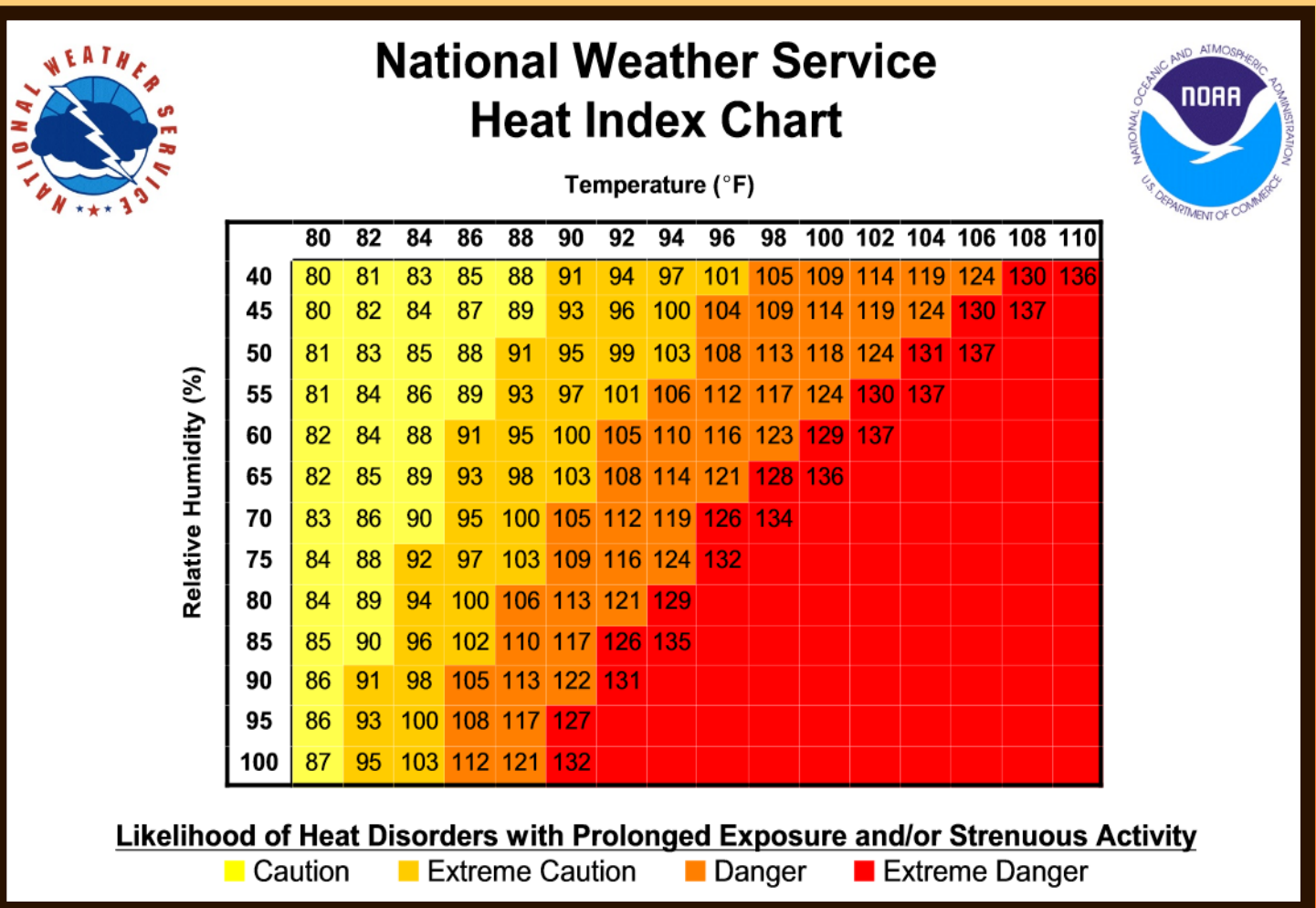
# NATIONAL WEATHER SERVICE

## MICHIGAN HEAT AWARENESS DAY

### MAY 22, 2015

#### WHAT IS THE HEAT INDEX?

The Heat Index (HI) is a measure of how hot the weather actually feels to the body based on air temperature and relative humidity. The values on the table below are calculated for shady locations. Exposure to full sun can increase heat index values by as much as 15°F. Strong winds, particularly those accompanying very hot, dry air, can be extremely hazardous, as wind increases heat to the body.



# Extreme Heat is Deadly!

## HOT FACTS!

- In the U.S., about 120 people die each year from extreme heat.
- Michigan averages about 5 heat related deaths a year.
- Heat deaths and injuries are typically underreported.
- Most heat related deaths are adults over the age of 40 and the deaths occur in their homes.
- Every location in Michigan has experienced 100 degree heat sometime in the past.
- Metro Detroit experiences about twelve 90+ degree days per year.
- Southern Lower Michigan experiences seven to twelve 90+ degrees days per year.
- Northern Lower Michigan and the Upper Peninsula experiences about five 90+ degree days per year.
- Warm nights with temperatures above 70° hinders the body's ability to cool. This creates even more heat stress the following day.

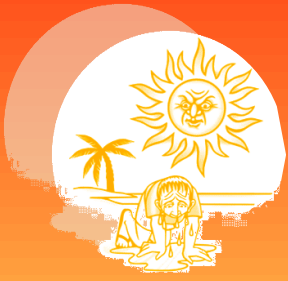


## Watches, Advisories & Warnings

**EXCESSIVE HEAT WATCH:** Issued when the Heat Index is expected to reach 105F within the next 2-3 days.

**HEAT ADVISORY:** Issued when the Heat Index is expected to reach 100F for 3 hours or more. May be issued with lower criteria for days with successive heat.

**EXCESSIVE HEAT WARNING:** Issued when the Heat Index is expected to reach 105F for 3 hours or more. May be issued with lower criteria for days with successive heat.



# Recognizing Heat Illness

## SUNBURN

- **SYMPTOMS:** Swelling, pain and redness of skin, blisters, fever, headaches.
- **FIRST AID:** Apply cool cloths to the burned area or immerse in cool water. Apply moisturizing lotion. Do not use salve, butter or ointment. Do not break blisters. Get medical attention for sunburned babies less than 1 year old.

## HEAT CRAMPS

- **SYMPTOMS:** Muscle pain, heavy sweating.
- **FIRST AID:** Stop all activity for a few hours. Drink water, clear juice or a sports beverage. Get medical attention if cramps do not go away within 1 hour.

## HEAT EXHAUSTION

- **SYMPTOMS:** Heavy sweating, cramps, tiredness, weakness, headache, cool and moist skin, fast and weak pulse, fast breathing, nausea, fainting.
- **FIRST AID:** Get the victim out of the sun, lay them down and loosen clothing. Apply cool, wet cloths. Give sips of a non-alcoholic drink. Get medical attention right away if the symptoms are severe or if the victim has heart problems or high blood pressure.

## HEAT STROKE

- **SYMPTOMS:** High body temperature (103° orally.) Red, hot, dry skin without sweating. Rapid, strong pulse. Throbbing headache. Dizziness, nausea, confusion, unconsciousness.
- **FIRST AID:** Do not give fluids to drink. Move the victim out of the sun and cool them down using a garden hose, sponging with cool water or any other method to cool them rapidly.

# Actions to Prevent Heat Disorders



## **HYDRATE**

- Drink plenty of water, even if you don't feel thirsty!
- Avoid drinks with alcohol, caffeine or lots of sugar.

## **EDUCATE**

- Know the latest temperature and heat index forecasts and values.
- Find a cool place where you will be able to get out of the heat.
- Know the warning signs of heat illness.

## **ACT QUICKLY**

- Get medical help right away for any of these warning signs:

Dry hot skin, heavy sweating, rapid breathing, rapid heartbeat, cramping, nausea, dizziness, confusion and exhaustion.

## **TAKE IT EASY**

- Avoid over exertion especially between the hours of 11 am and 6 pm.
- Take breaks at least hourly in the shade or in an air conditioned location.
- Stay out of the sun and stay in a cooled building as much as possible.
- Use a fan only when the windows are open or when the air conditioner is on.



# Beat the Heat

## Check the Backseat

### **DO NOT LEAVE CHILDREN OR PETS IN YOUR VEHICLE!**

- The temperature inside a vehicle can rise 20 degrees in 10 minutes and 50 degrees in an hour, even when outside air temperatures are in the 70's.
- The inside of a car acts like a greenhouse, where actual temperatures inside the vehicle can reach 120°F in minutes and approach 150°F in as little as an hour.
- This can cause hyperthermia (heat stroke) in only minutes, particularly in children, whose body temperatures warm at a rate three to five times faster than an adult.
- Studies have shown that "cracking the windows" provides little (if any) relief.

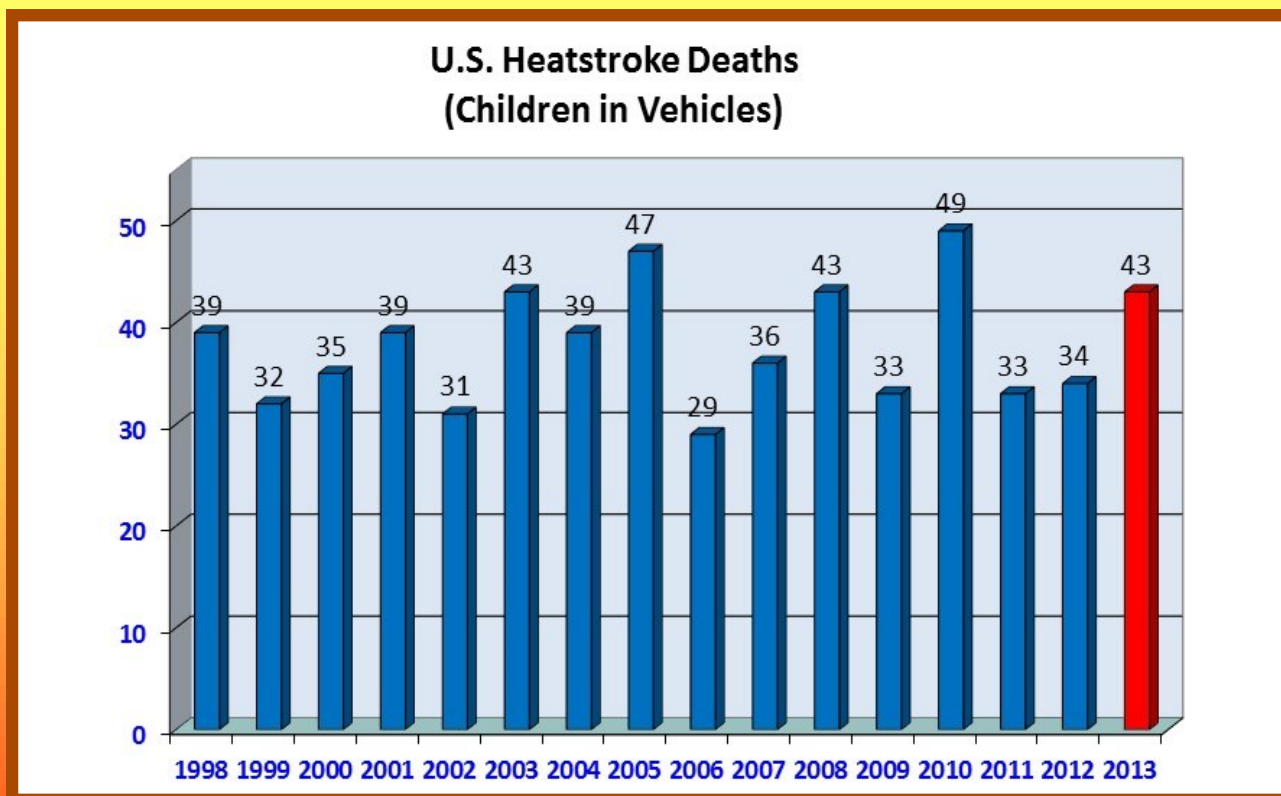


Chart courtesy of San Francisco State University

# WEB RESOURCES

NWS - [www.weather.gov](http://www.weather.gov)

Detroit - [www.weather.gov/dtx](http://www.weather.gov/dtx)

Grand Rapids - [www.weather.gov/grr](http://www.weather.gov/grr)

Gaylord - [www.weather.gov/apx](http://www.weather.gov/apx)

Marquette - [www.weather.gov/mqt](http://www.weather.gov/mqt)

Northern Indiana - [www.weather.gov/iwx](http://www.weather.gov/iwx)



**Heat Index Chart**

<http://www.weather.gov/om/heat/heatindex.shtml>

**Excessive Heat Outlooks**

[http://www.hpc.ncep.noaa.gov/heat\\_index.shtml](http://www.hpc.ncep.noaa.gov/heat_index.shtml)

[http://www.cpc.ncep.noaa.gov/products/predictions/short\\_range/heat/hi\\_610.php](http://www.cpc.ncep.noaa.gov/products/predictions/short_range/heat/hi_610.php)

**NWS Heat Page**

<http://www.weather.gov/om/heat/index.shtml>

**Michigan Committee for Severe Weather Awareness**

[www.mcswa.com](http://www.mcswa.com)

**CDC Extreme Heat Health**

<http://emergency.cdc.gov/disasters/extremeheat/>

# NOAA/NWS Contacts

**JIM MACZKO**

**NWS Grand Rapids MI**

**(616) 949-0643 x726**

<http://weather.gov/grr>

**MATT ZIKA**

**NWS Marquette MI**

**(906) 475-5782 x 726**

<http://weather.gov/mqt>

**JIM KEYSOR**

**NWS Northern Lower MI**

**(989) 731-3384 x726**

<http://weather.gov/apx>

**RICHARD POLLMAN**

**NWS White Lake, MI**

**(248) 625-3309 x726**

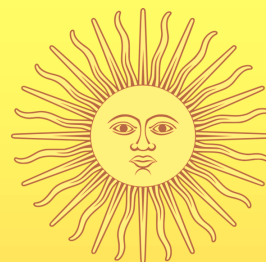
<http://weather.gov/dtx>

**MICHAEL LEWIS**

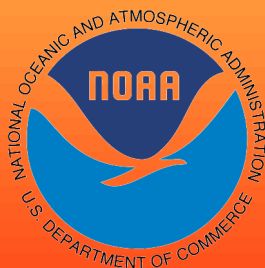
**NWS Northern IN**

**(574) 834-1104 x726**

<http://weather.gov/iwx>



**This publication is available on-line at your local NOAA NWS web site.**



**Provided by NOAA National Weather Service offices  
serving Michigan  
and the  
Michigan Committee for Severe Weather  
Awareness**

