

APRIL 2015

Weather Digest

Weather Summary

Significant Events

Special Features

**Temperature &
Precipitation**

Severe Weather

April 2015 Weather Summary

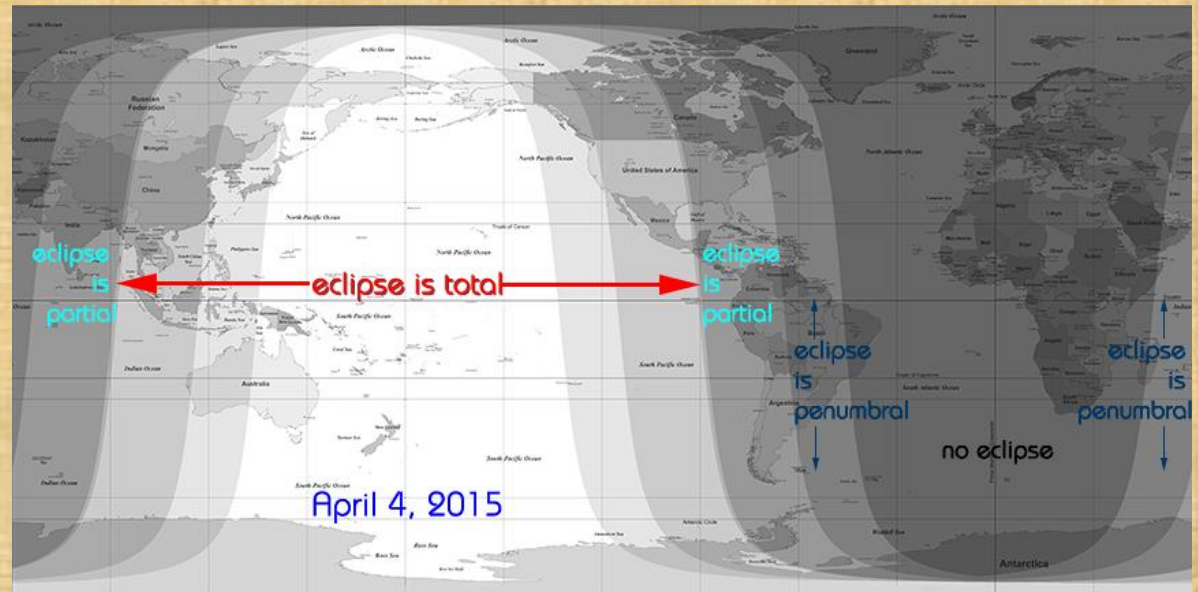
April proved to be a fairly active month, certainly more active than a typical April. This may be explained by a weak to moderate El Niño pattern which has developed and is expected to persist through the summer and into this fall. Dry southwest flow aloft dominated the first week, resulting in well above normal temperatures.

More active weather marked the middle two weeks or so of the month as upper lows or troughs began marching east across the southern U.S. An upper low moved from northern Mexico across southern New Mexico on the 13th, providing wide spread, but mostly light rain. The high elevations of the Sacramento Mountains (Cloudcroft and Sunspot) received two to three inches of snow. On the 17th, a trough aloft from the Pacific Northwest dropped down to western New Mexico, producing strong winds on the 16th, and chilly low temperatures on the 17th. Upper lows on the 24th and 26th spread more areas of light rain and high elevation snow to the area. Finally, the last week or so of the month returned to normal, meaning mostly dry and temperatures returning to normal.

For the month, the area from the Rio Grande Valley east received above normal precipitation, with some of this area receiving two to three times the normal amount of rain. The area west of the Rio Grande Valley was abnormally dry, receiving only about one-half the normal April precipitation. Despite the above normal start to the month, the last 10-14 days of the month were very cool, and brought the month as a whole into the cooler than normal range.



3 minutes of totality during a total Lunar eclipse around 6 am April 4, 2015





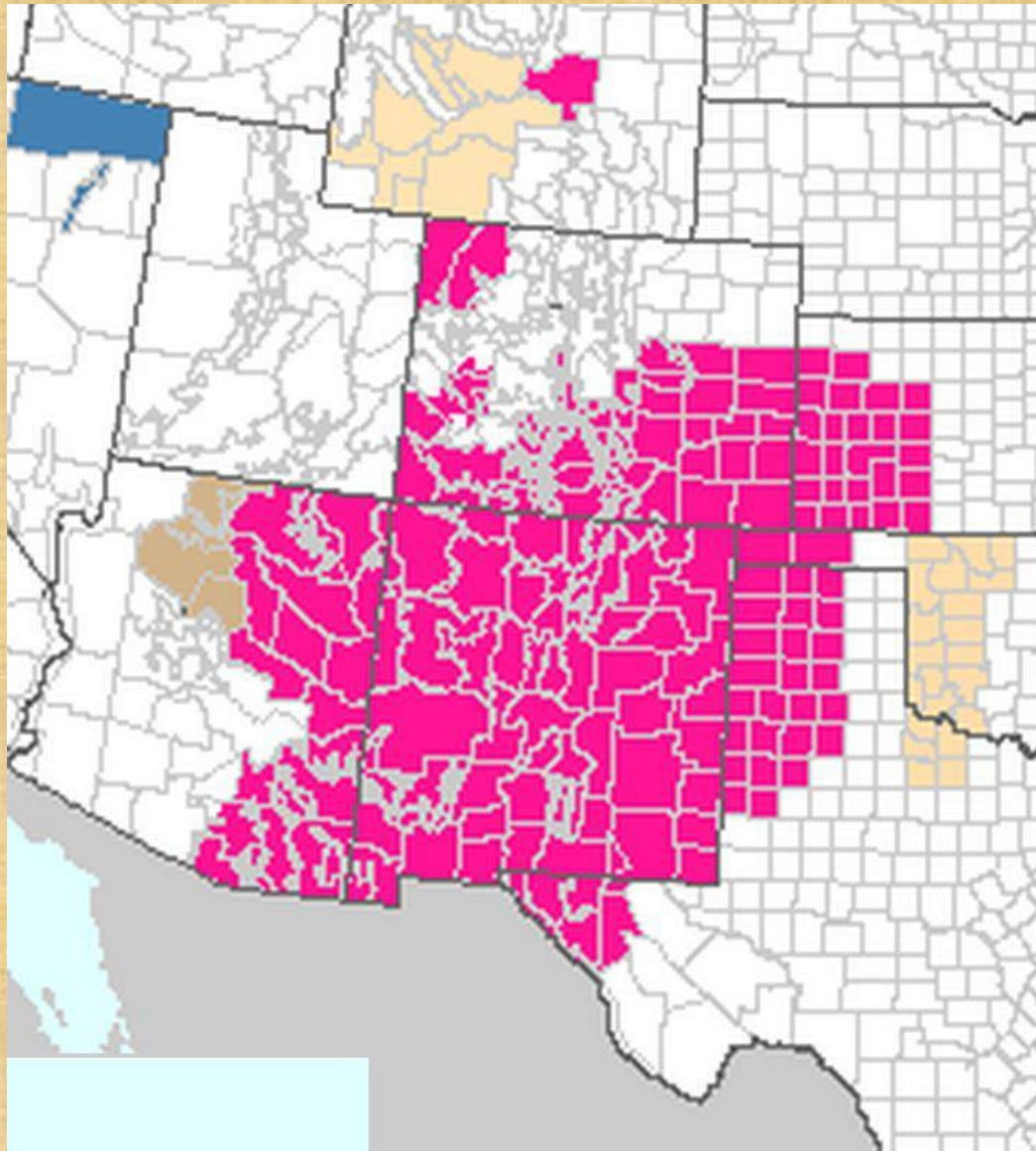
April 3, 2015

Interstate 10

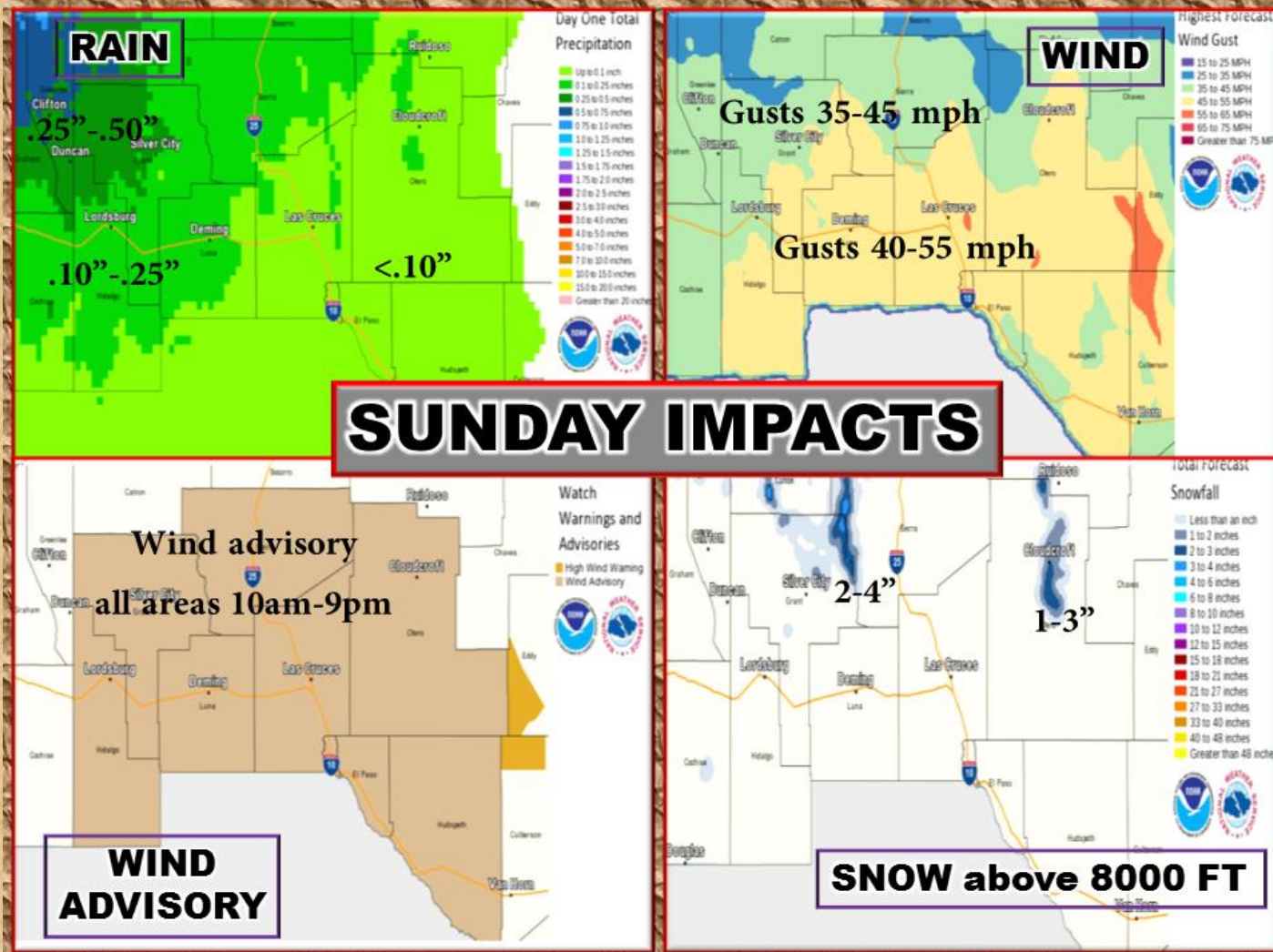
Dry Playas



April 5, 2015 Critical Fire Weather

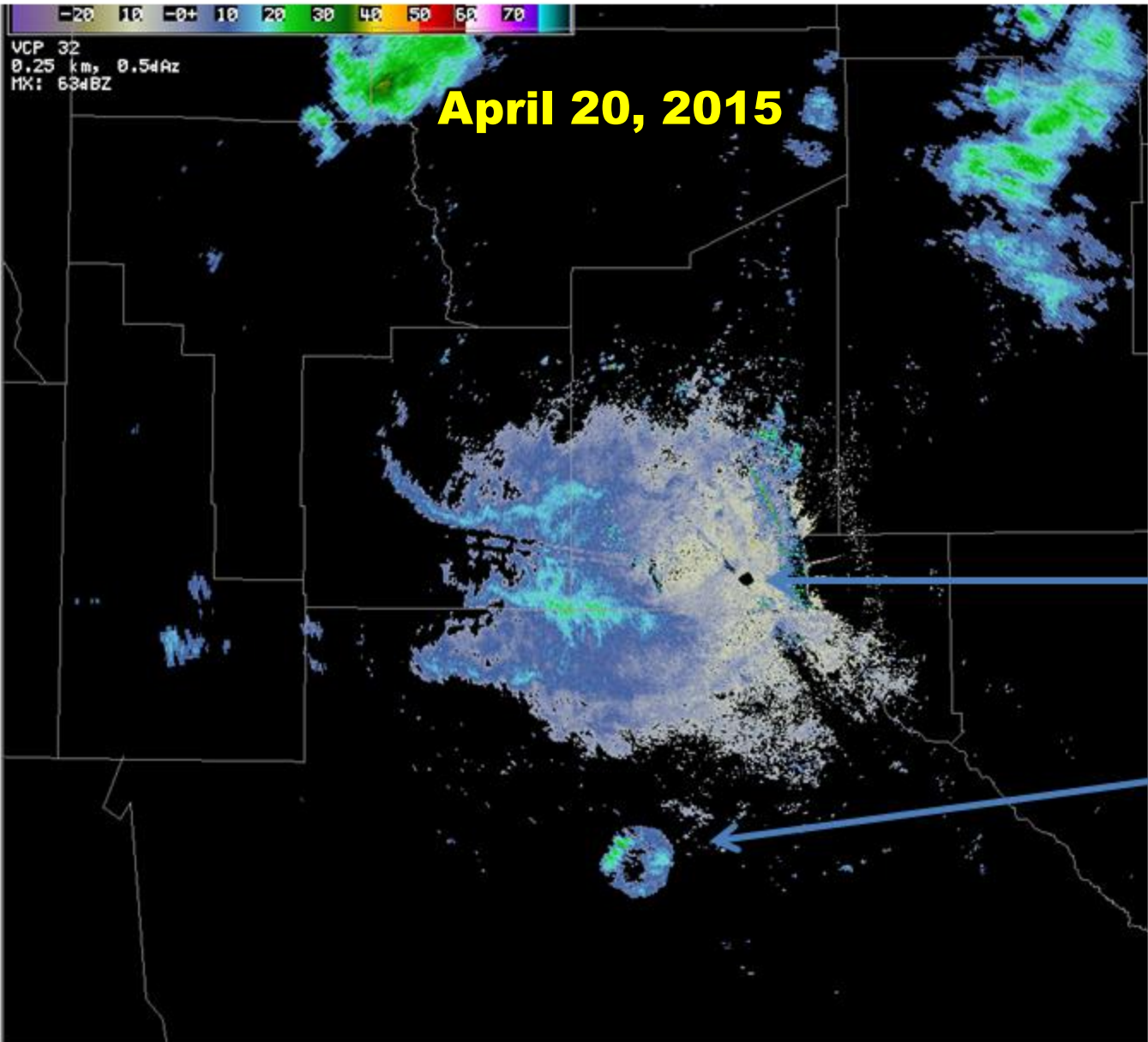


April 26, 2015



April 12, 2015
Trans Mountain Pass





El Paso Radar

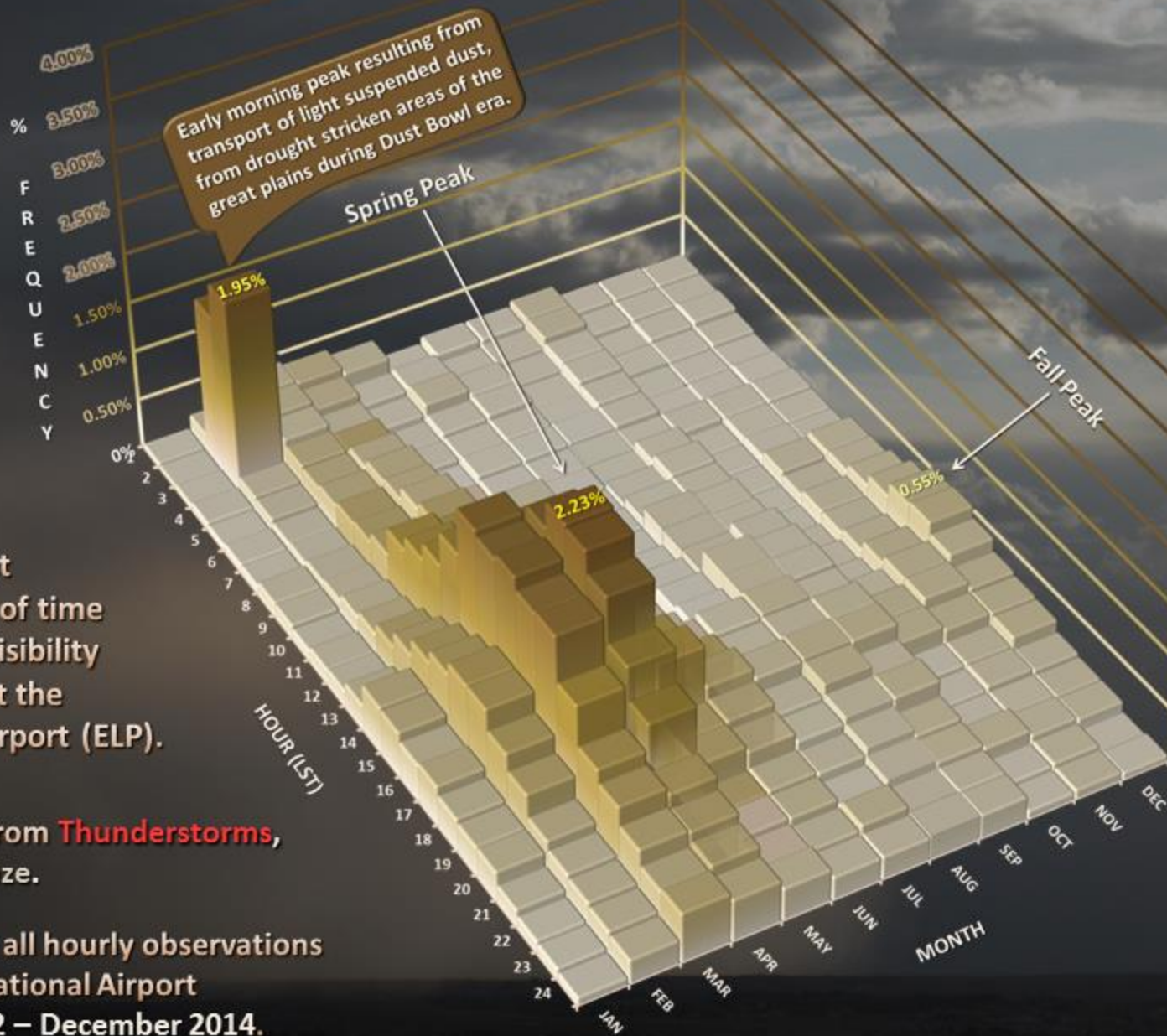
Bats

Sunday April 26, 2015
50+ mph wind damage
El Paso area





When do we see blowing dust in El Paso?



Graph in the upper right represents the percent of time blowing dust reduces Visibility below 7 statute miles at the El Paso International Airport (ELP).

- This includes dust from **Thunderstorms**, Drifting Sand and Haze.
- Data is derived from all hourly observations at the El Paso International Airport from December 1932 – December 2014.



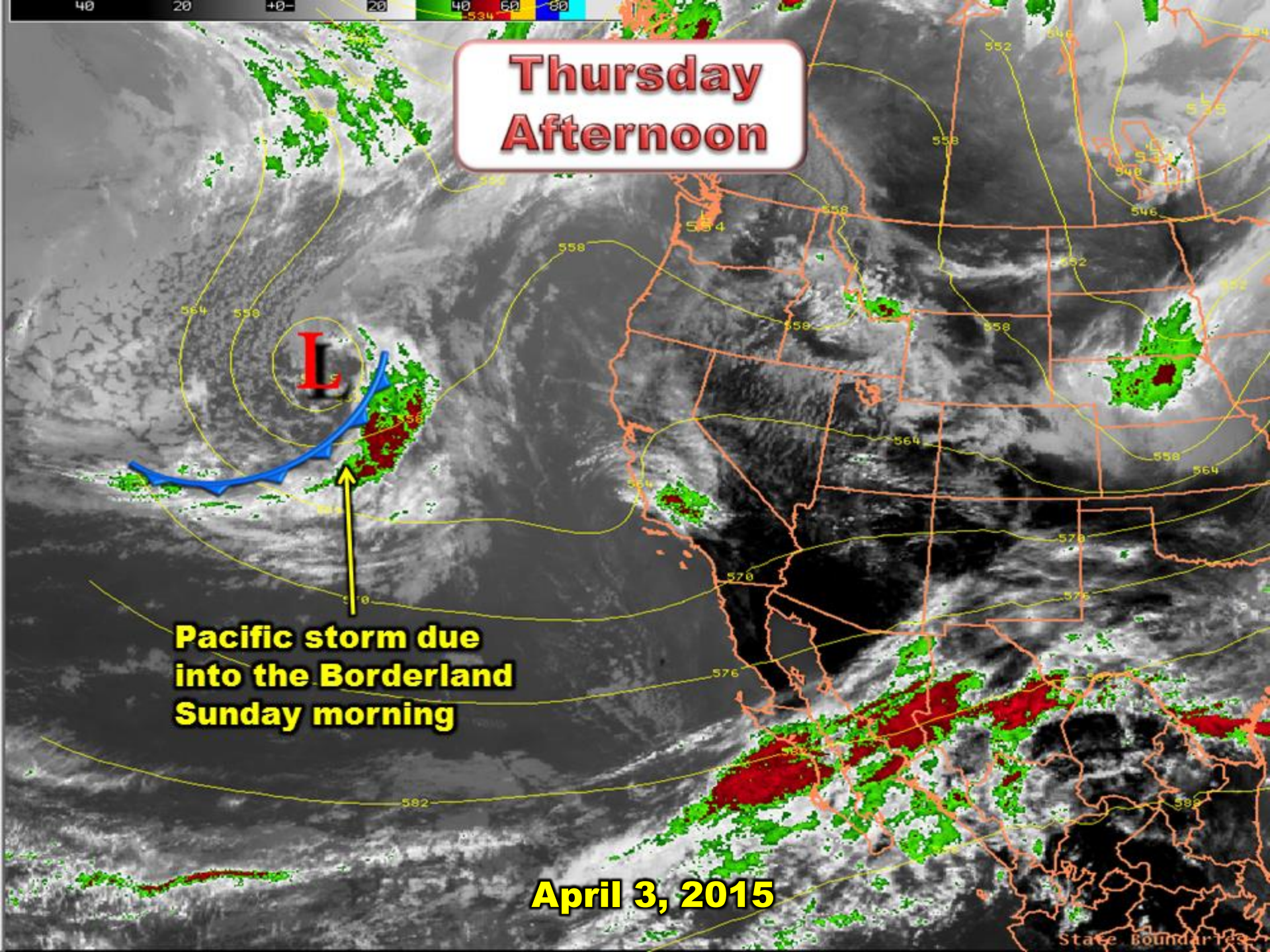
Now this is a sunrise

**Thursday
Afternoon**

L

**Pacific storm due
into the Borderland
Sunday morning**

April 3, 2015



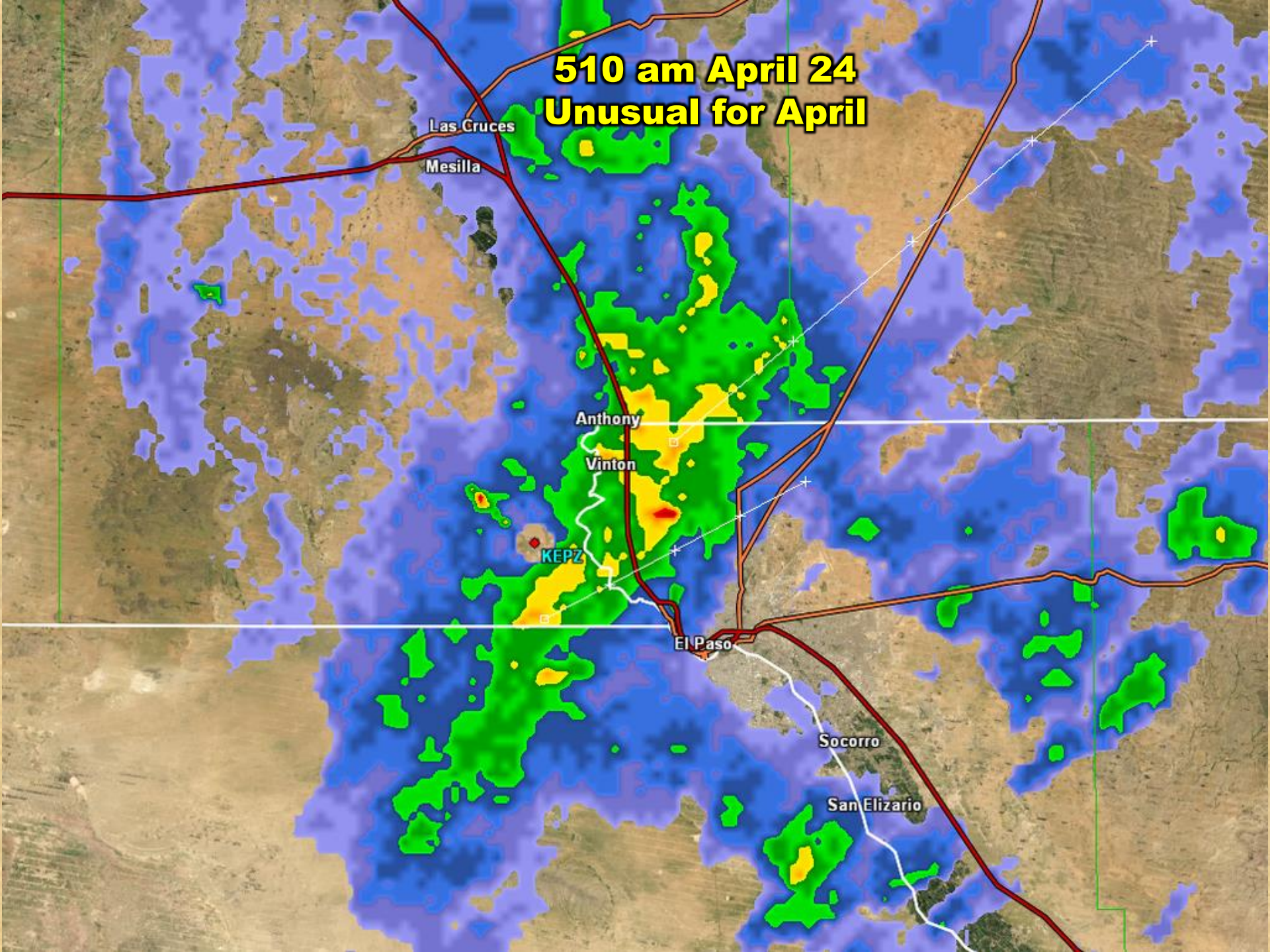
Sunday April 26
0.5 to 1.0 of snow
In Silver City



Sunday April 26
2 inches of snow
Cloudcroft



510 am April 24 Unusual for April



**“Seattle-type” day
April 12 in El Paso**



**April 12
McKeligon Canyon**



Sunday April 26
Blowing dust-Redd Road



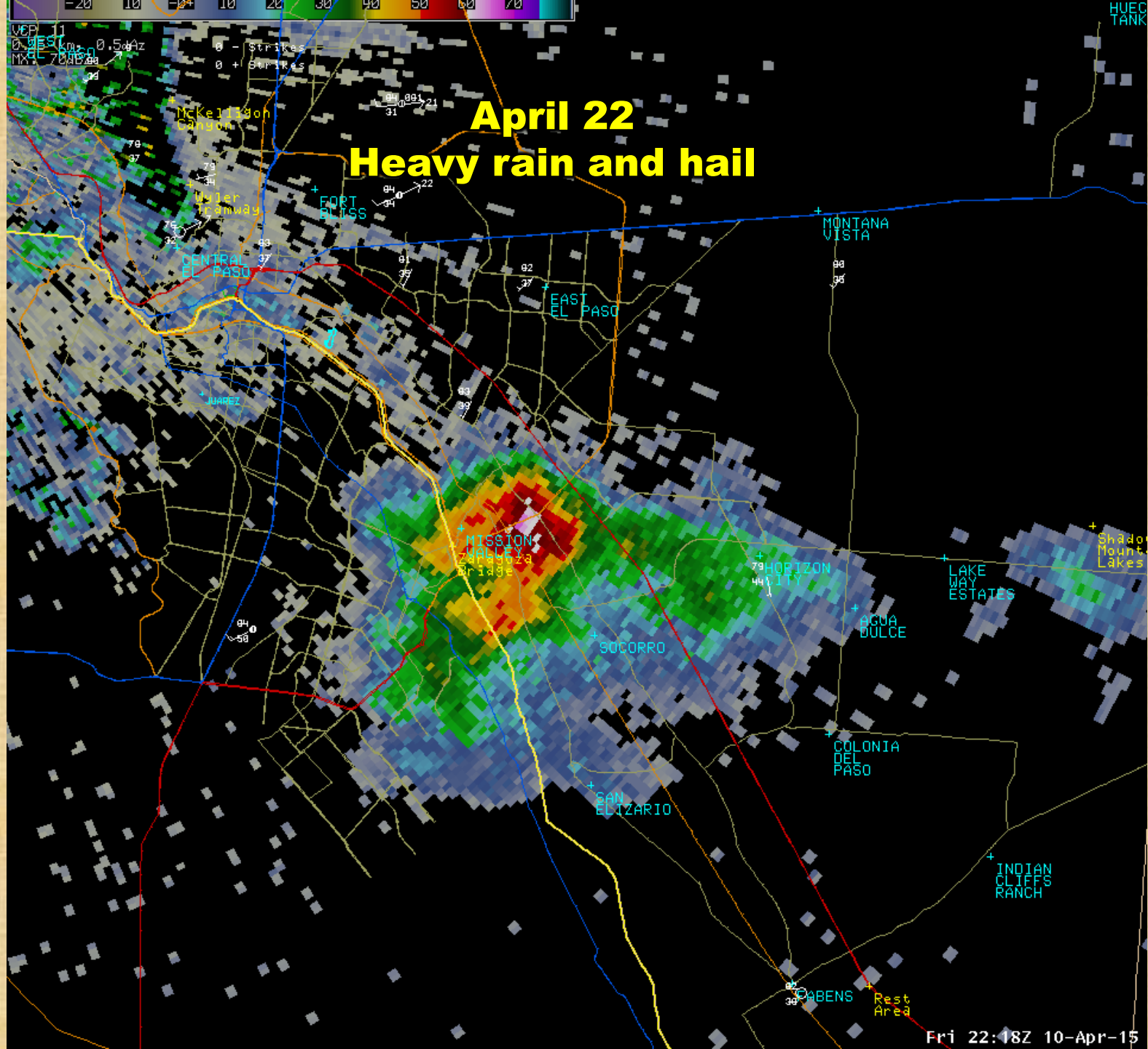
Sunday April 26
Dime-size hail
Las Cruces



April 3
Franklin Mtns, El Paso

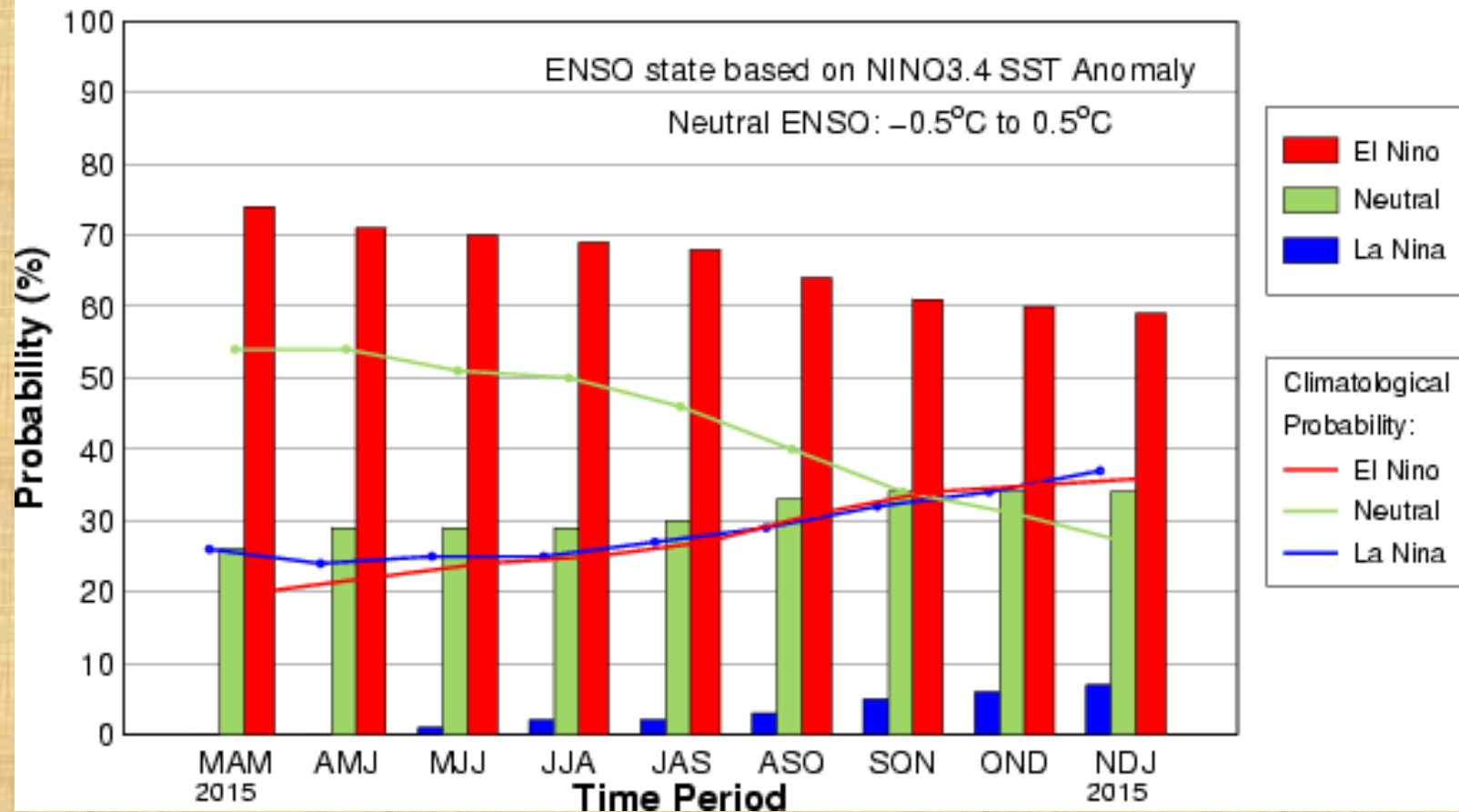


April 22 Heavy rain and hail



El Nino to continue

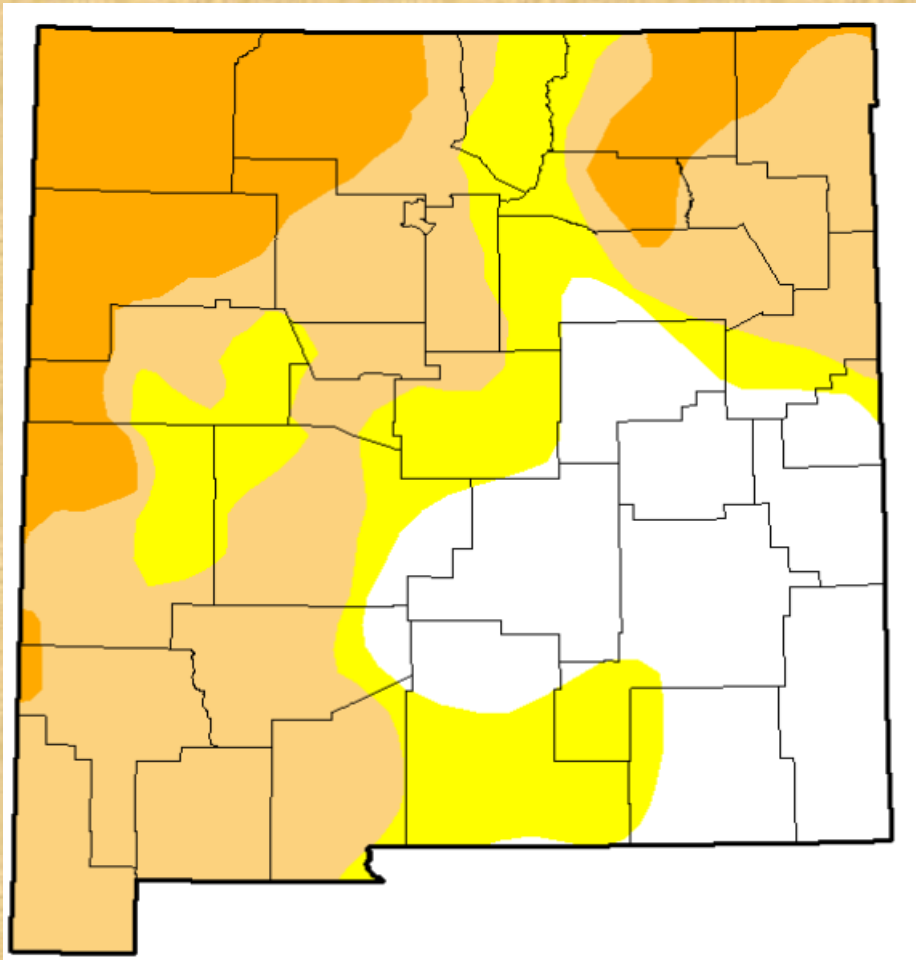
Early-Apr CPC/IRI Consensus Probabilistic ENSO Forecast



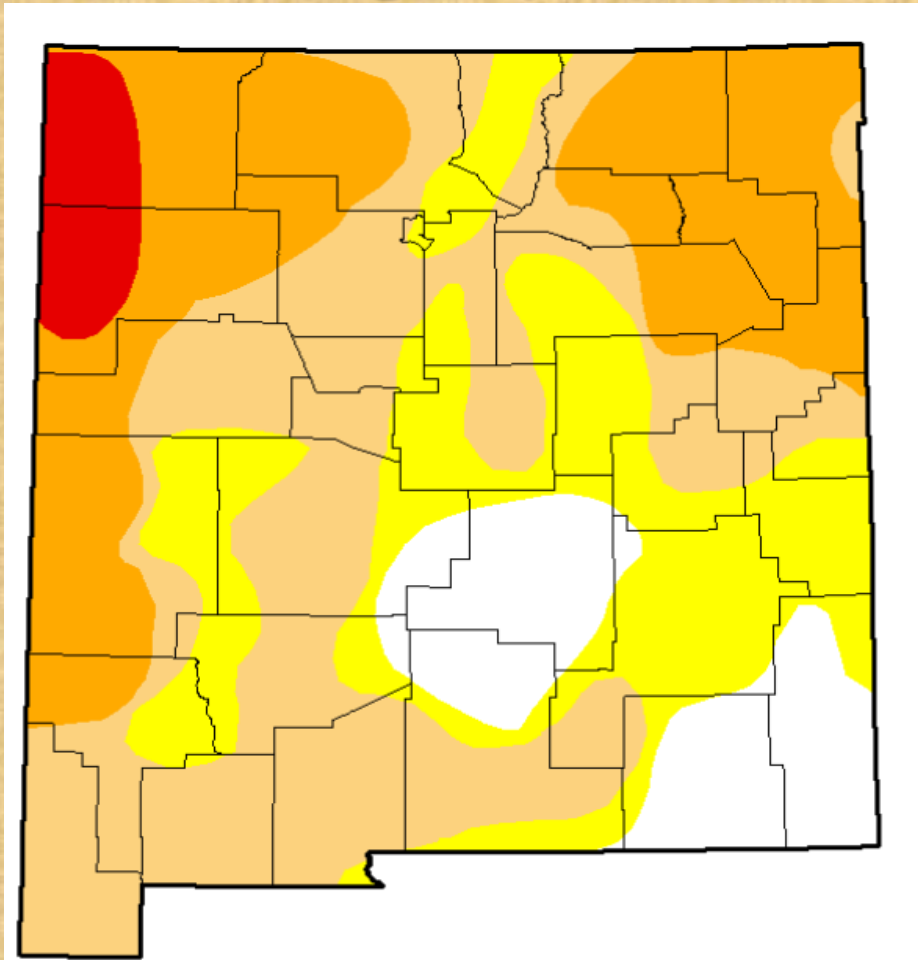
Current drought conditions for New Mexico and 3 month change

- Abnormally Dry – D0
- Moderate Drought – D1
- Severe Drought – D2
- Extreme Drought – D3
- Exceptional – D4

April 28, 2015





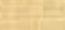


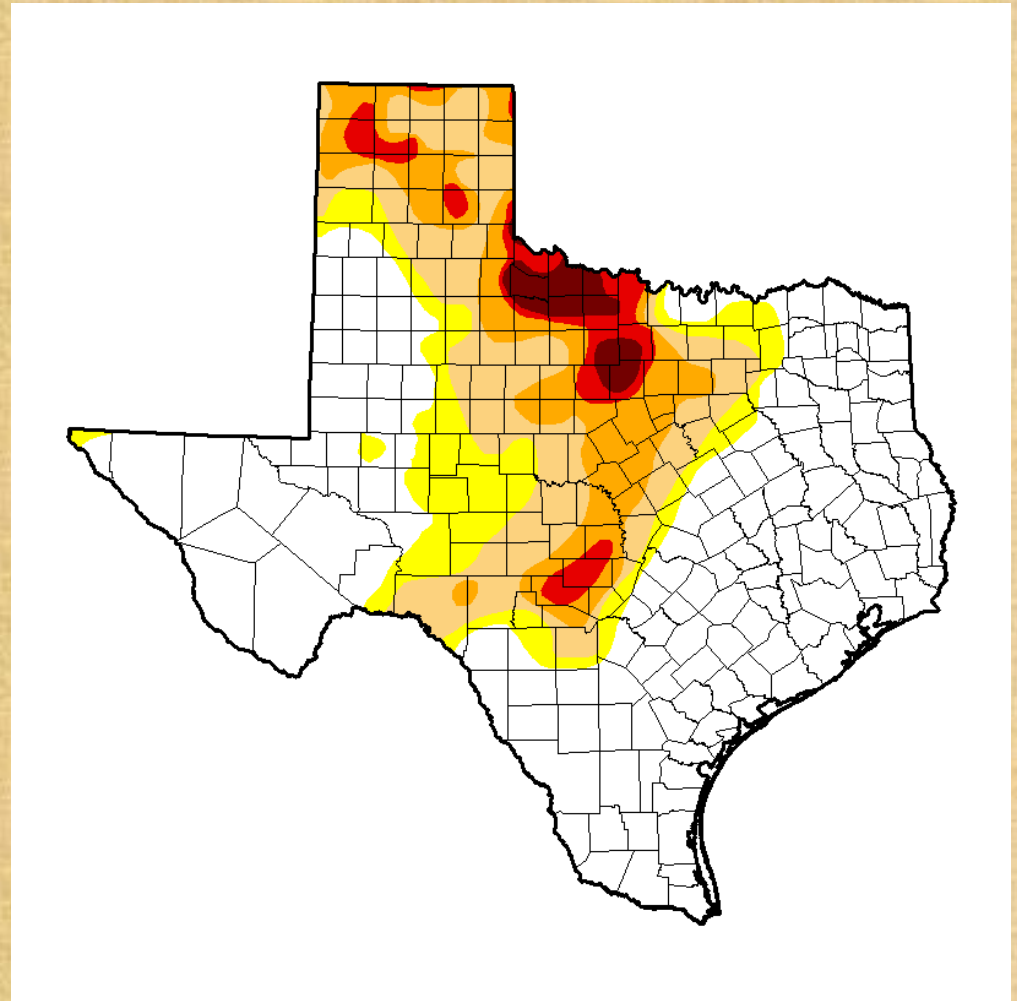
January 27, 2015



Current drought conditions for Texas as of April 28

Intensity:

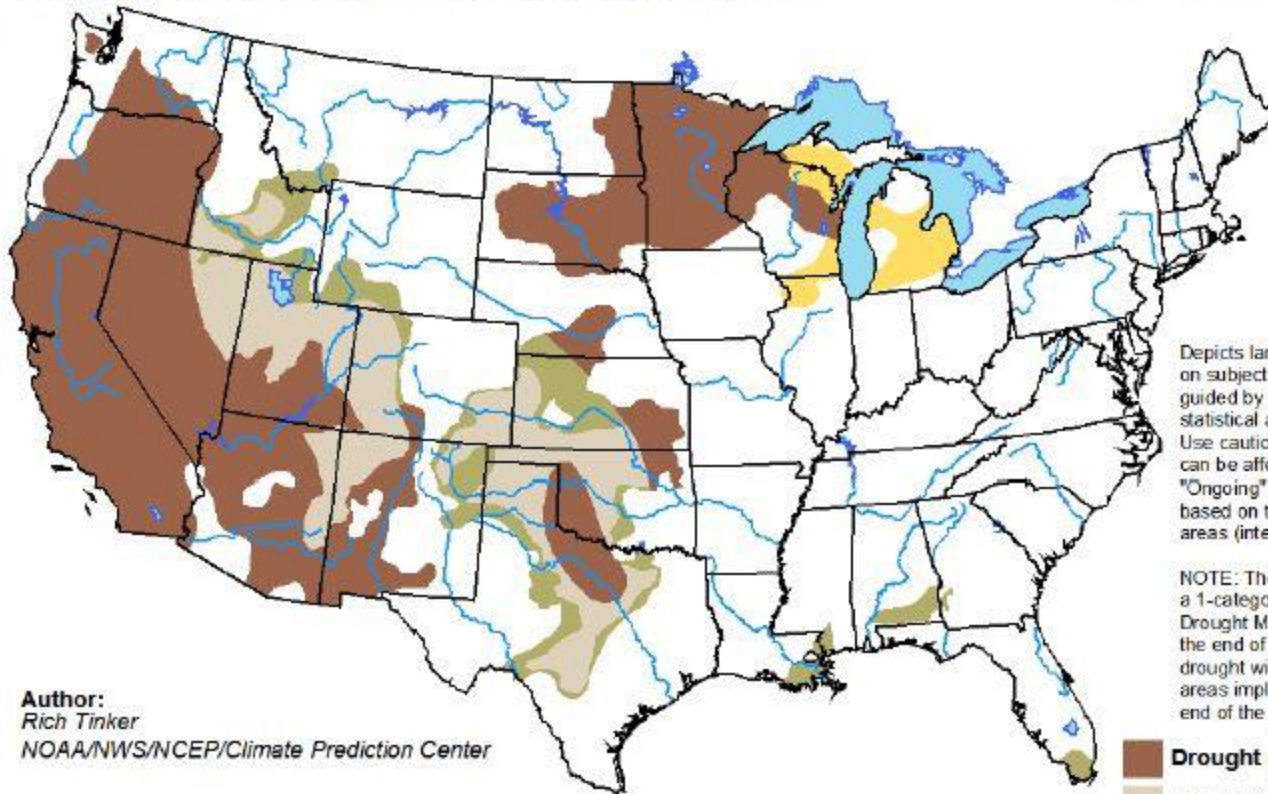
-  D0 - Abnormally Dry
-  D1 - Moderate Drought
-  D2 - Severe Drought
-  D3 - Extreme Drought
-  D4 - Exceptional Drought



Seasonal Outlook (Apr 16 – Jul 31)

U.S. Seasonal Drought Outlook Drought Tendency During the Valid Period

Valid for April 16 - July 31, 2015
Released April 16, 2015

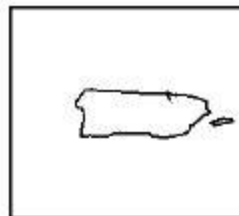


Depicts large-scale trends based on subjectively derived probabilities guided by short- and long-range statistical and dynamical forecasts. Use caution for applications that can be affected by short lived events. "Ongoing" drought areas are based on the U.S. Drought Monitor areas (intensities of D1 to D4).

NOTE: The tan areas imply at least a 1-category improvement in the Drought Monitor intensity levels by the end of the period, although drought will remain. The green areas imply drought removal by the end of the period (D0 or none).

Author:
Rich Tinker
NOAA/NWS/NCEP/Climate Prediction Center

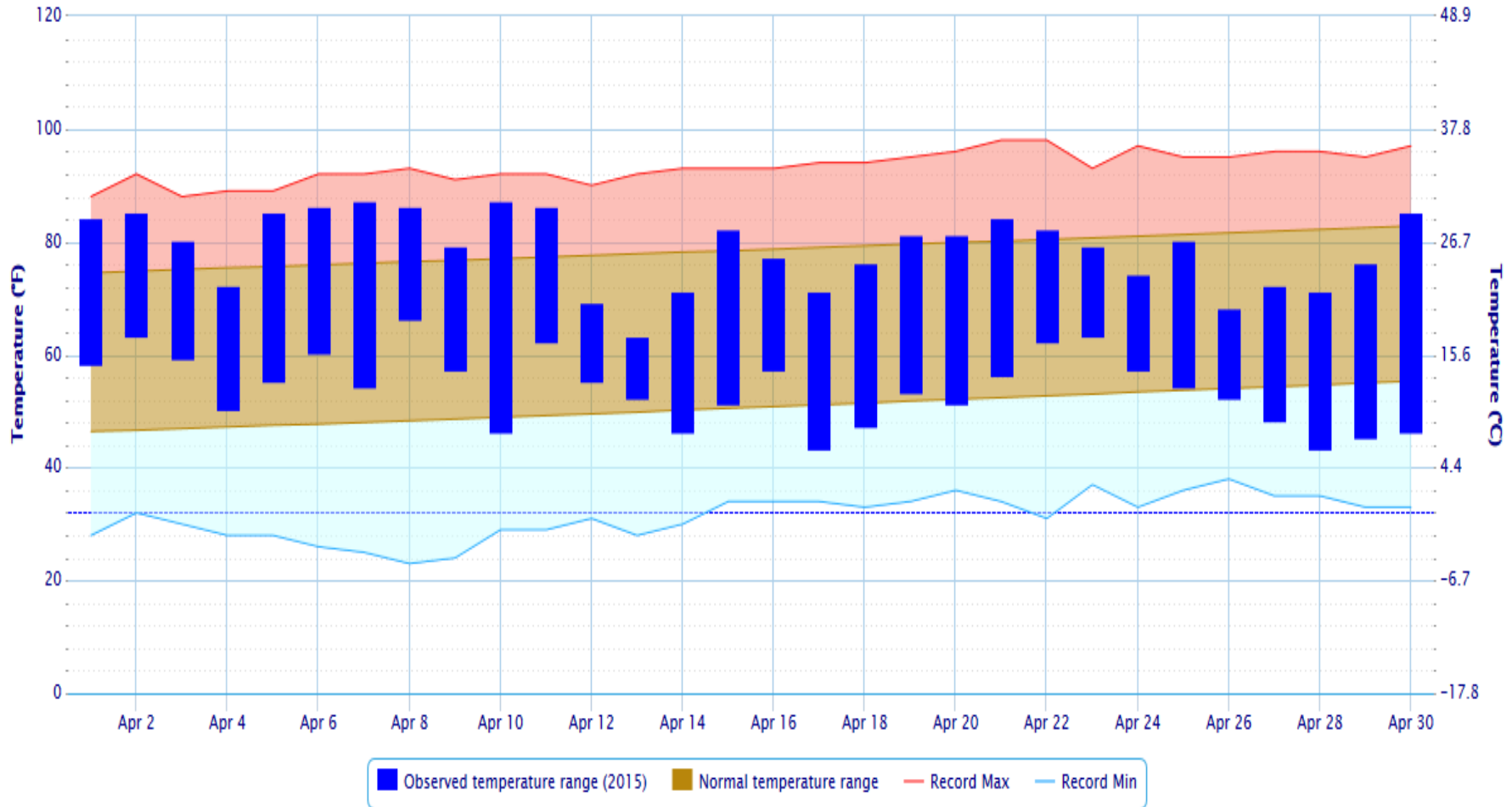
-  Drought persists/intensifies
-  Drought remains but improves
-  Drought removal likely
-  Drought development likely



<http://go.usa.gov/hHTe>

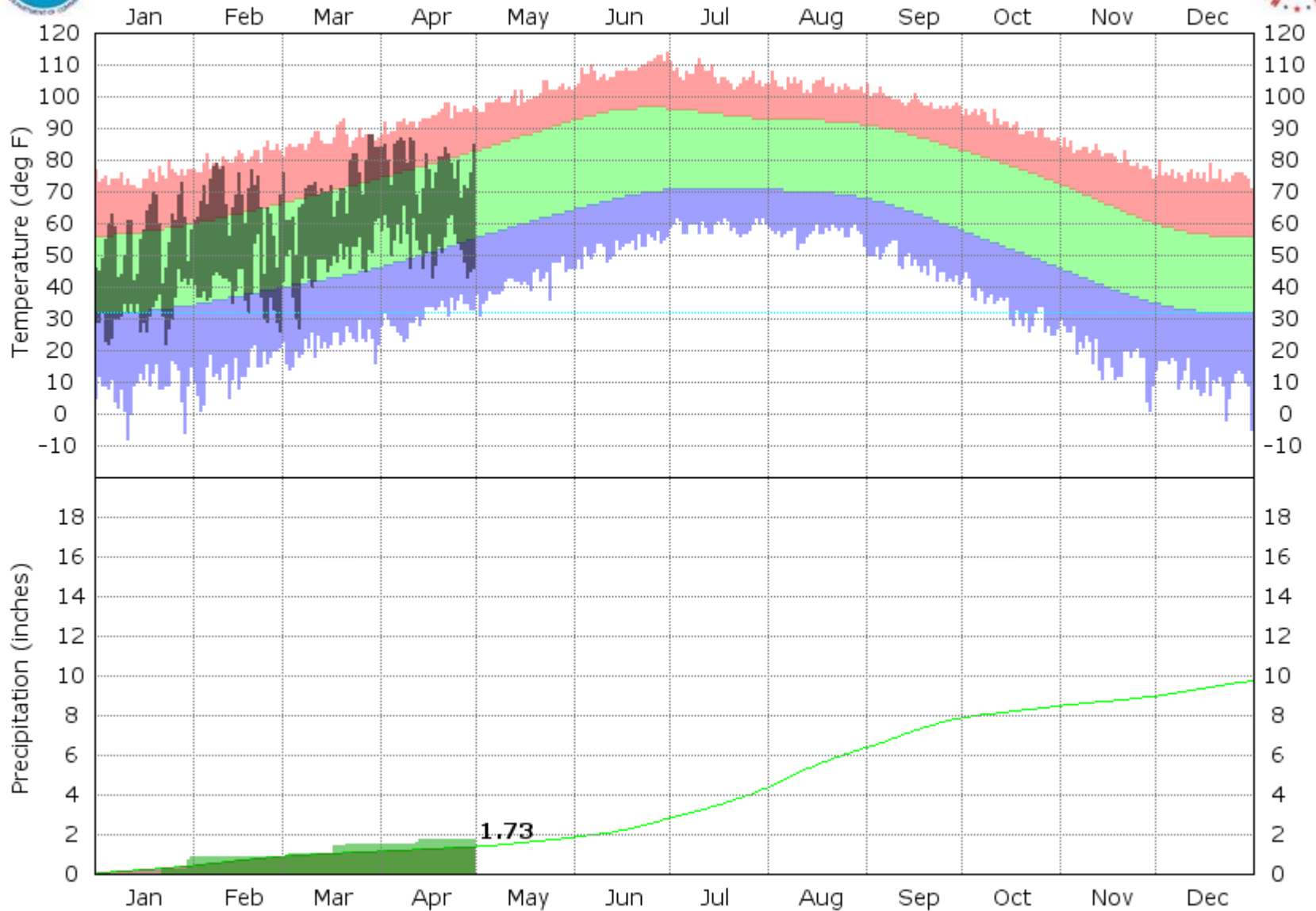
Daily Temperature Data - El Paso Area, TX (ThreadEx)

Period of Record - Max temperature: 1887-01-01 to 2015-04-30; Min temperature: 1879-01-01 to 2015-04-30. Normals period: 1981-2010. Click and drag to zoom chart.



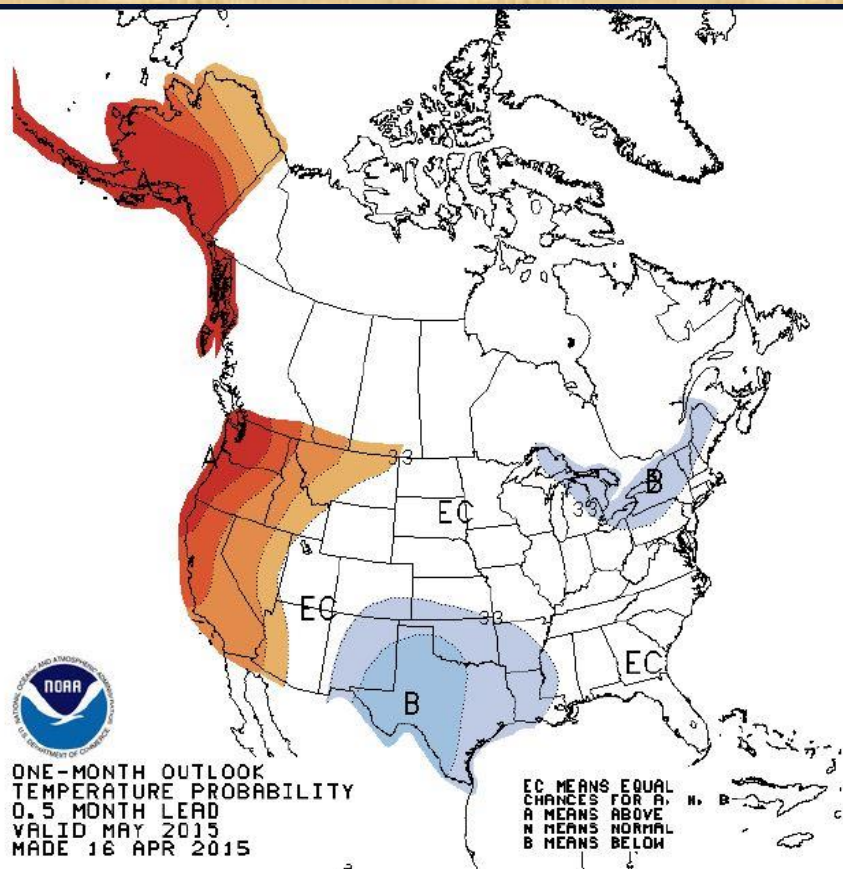


El Paso TX - 2015

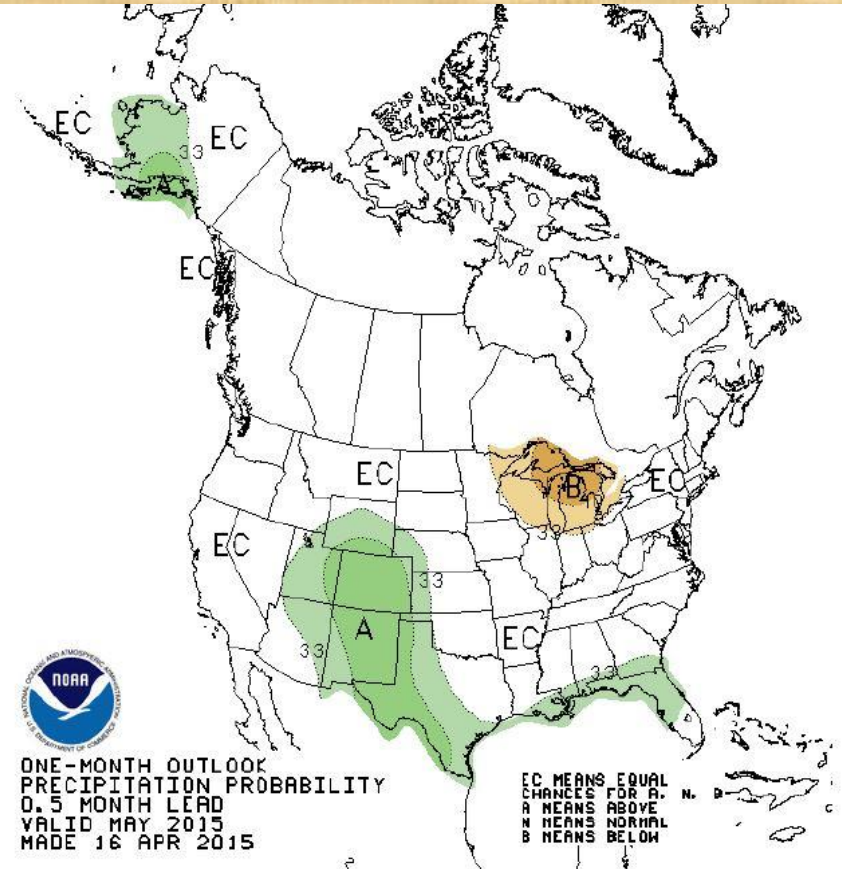


Temperature and precipitation outlook for May 2015

Temperature

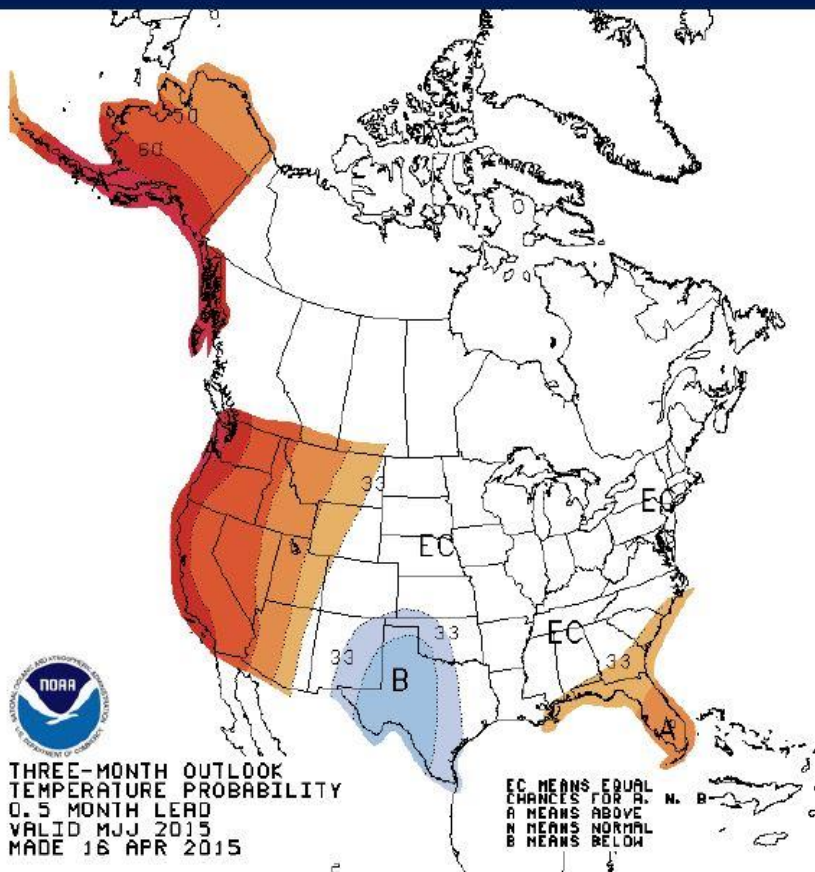


Precipitation

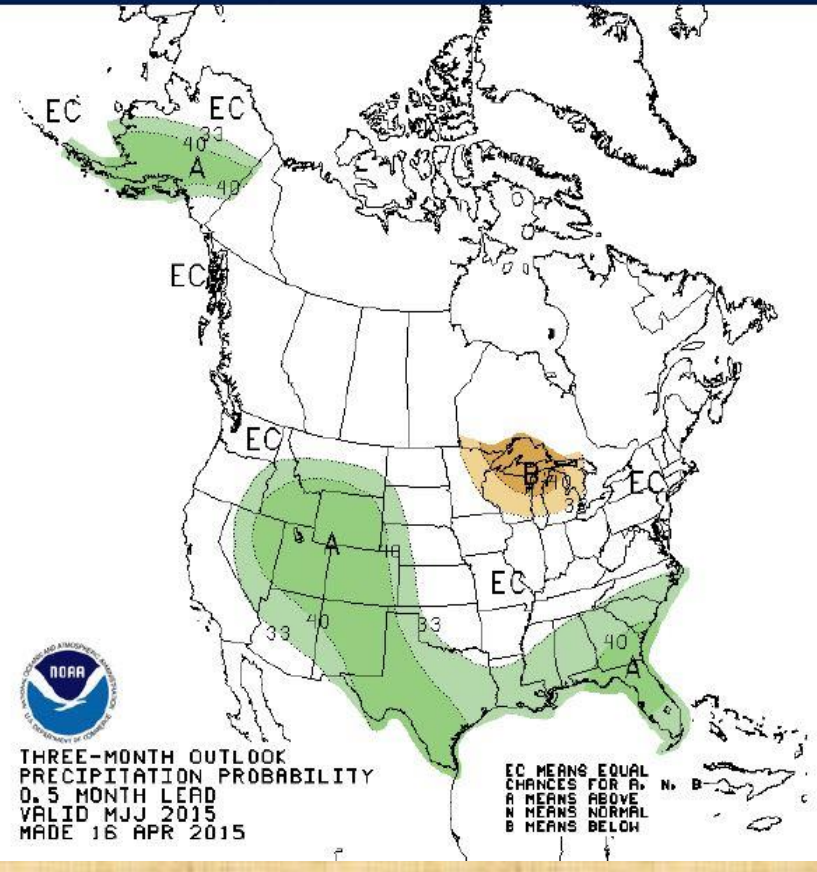


Temperature and precipitation outlook for May - July 2015

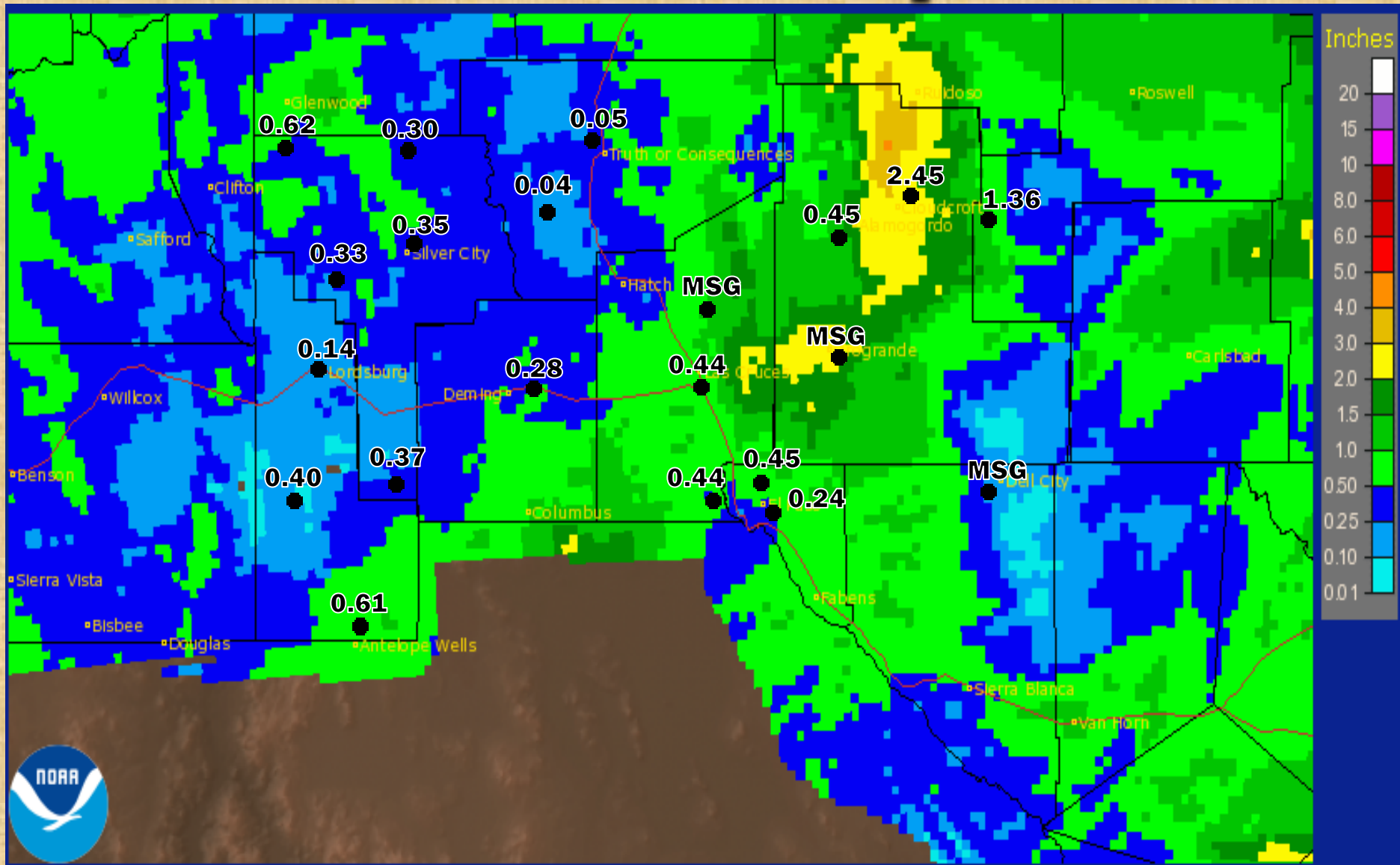
Temperature



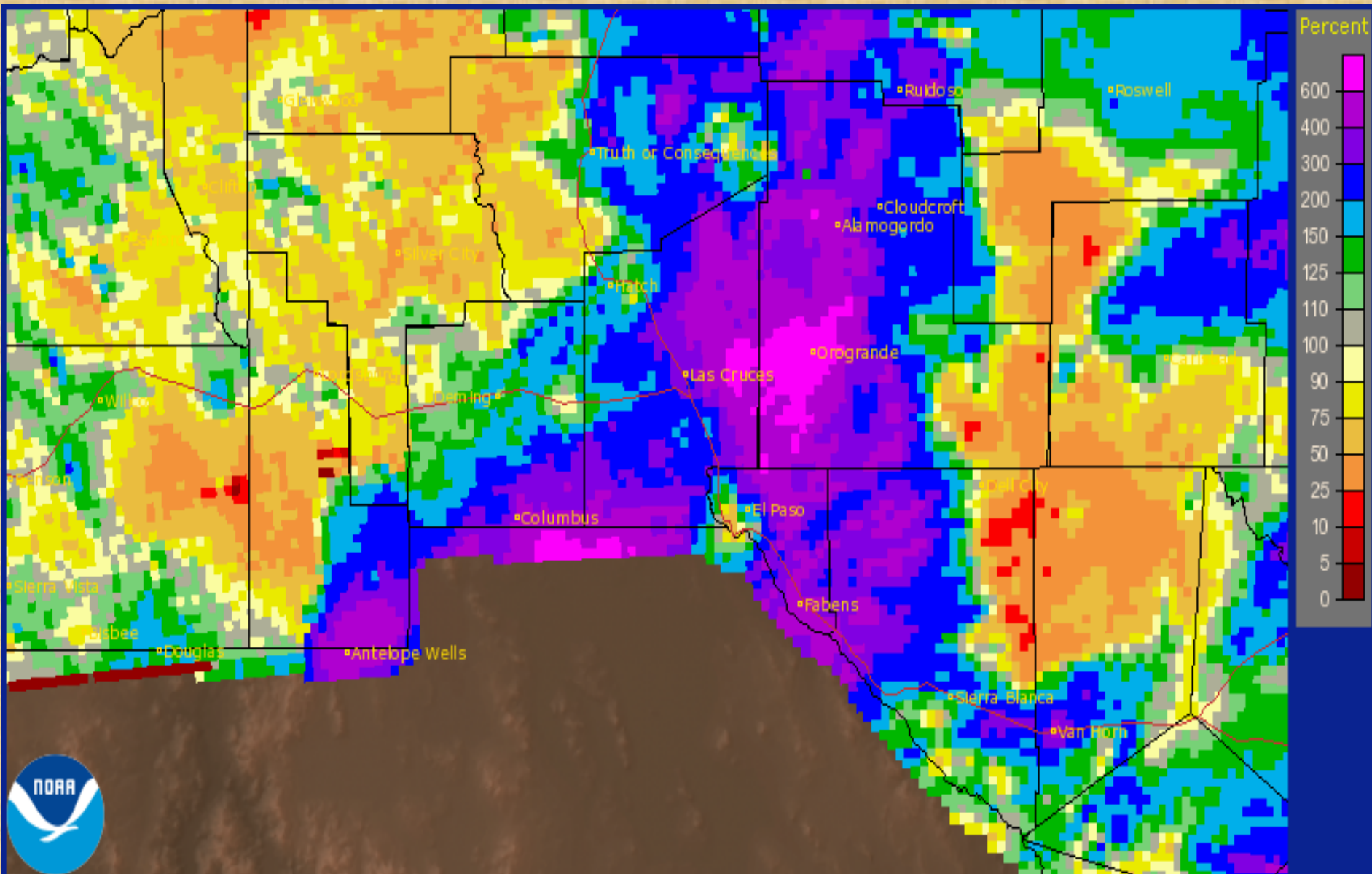
Precipitation



April 2015 radar rainfall estimate with surface rainfall reports



April 2015 Radar Rainfall Estimate (Percent of normal)



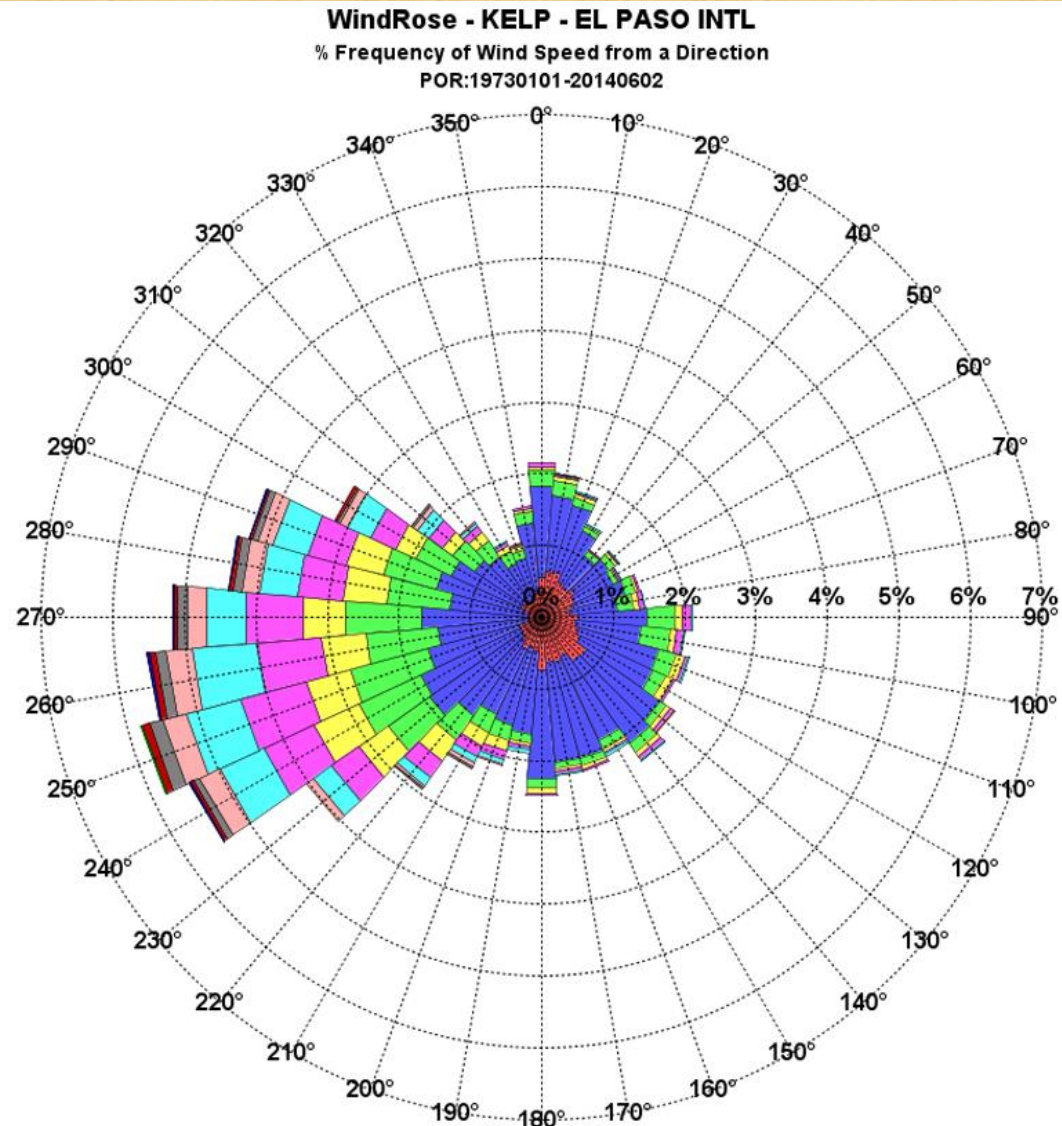
Special Features

<http://www.srh.noaa.gov/epz/?n=elpwindrosedata>

Month: APRIL

Calm: 6.66%

Variable: 2.29%



*****PEAK WIND GUST*****

LOCATION	MAX WIND GUST MPH	TIME/DATE OF MEASUREMENT	COMMENTS
----------	-------------------------	--------------------------------	----------

April 26 Wind Reports

NEW MEXICO

...DONA ANA COUNTY...

SAN AUGUSTIN PASS	77	1120 AM	4/26	ELEV 5902 FT	WMSR
TWIN PEAKS	61	929 AM	4/26	ELEV 4774 FT	CWOP
WSMR MAIN POST 18 NE	60	1010 AM	4/26	ELEV 3951 FT	WSMR
NORTHRUP STRIP	55	750 AM	4/26	ELEV 3907 FT	WSMR
KLRU	51	915 AM	4/26	ELEV 4455 FT	AWOS
LAS CRUCES 6 WSW	51	1100 AM	4/26	ELEV 4199 FT	NMED
SANTA TERESA 5 WNW	48	943 AM	4/26	ELEV 4115 FT	RSOIS
CHAPARRAL 2 E	48	1200 PM	4/26	ELEV 4100 FT	NMED
WSMR MAIN POST 1 SE	48	120 AM	4/26	ELEV 4275 FT	WSMR
SAN AUGUSTIN PASS 5	47	1235 PM	4/26	ELEV 5046 FT	WSMR
DRIPPING SPRINGS	47	1226 PM	4/26	ELEV 5885 FT	RAWS
CONDON FIELD	47	945 AM	4/26	ELEV 3914 FT	WSMR
SANTA TERESA 5 SW	47	100 PM	4/26	ELEV 4100 FT	NMED
LAS CRUCES 10 NE	46	200 PM	4/26	ELEV 4450 FT	NMED
LA UNION 3 SE	46	400 PM	4/26	ELEV 3810 FT	NMED
SUNLAND PARK 1 E	45	1200 PM	4/26	ELEV 3760 FT	NMED
WSMR MAIN POST 6 ESE	45	1025 AM	4/26	ELEV 4006 FT	WSMR
WSMR MAIN POST 1 SE	44	955 AM	4/26	ELEV 4190 FT	WSMR
WSMR MAIN POST	44	155 PM	4/26	ELEV 4242 FT	WSMR
NORTHRUP STRIP 11 SW	41	1000 AM	4/26	ELEV 4321 FT	WSMR
DONA ANA 2 SW	39	919 AM	4/26	ELEV 3921 FT	CWOP
LAS CRUCES 8 NE	39	937 AM	4/26	ELEV 4474 FT	CWOP
ORGAN 11 NE	39	1001 AM	4/26	ELEV 6138 FT	RAWS
LA UNION 1 NE	38	1019 AM	4/26	ELEV 3787 FT	CWOP
LAS CRUCES 5 NE	37	929 AM	4/26	ELEV 4307 FT	CWOP
SUNLAND PARK	37	1200 PM	4/26	ELEV 3860 FT	NMED
SANTA TERESA 2 NW	36	1012 AM	4/26	ELEV 3812 FT	CWOP
TALAVERA 3 E	35	957 AM	4/26	ELEV 4902 FT	CWOP

...GRANT COUNTY...

KSVC	37	515 PM	4/26	ELEV 5443 FT	AWOS
REDROCK 12 E	35	1159 AM	4/26	ELEV 6965 FT	RAWS

...HIDALGO COUNTY...

HACHITA 15 SSW	42	240 AM	4/26	ELEV 4291 FT	RAWS
KLSB	38	555 PM	4/26	ELEV 4288 FT	AWOS

...LUNA COUNTY...

DEMING 2 SE	48	1200 PM	4/26	ELEV 4308 FT	NMED
COLUMBUS 8 WSW	40	818 AM	4/26	ELEV 4311 FT	CWOP

...OTERO COUNTY...

OROGRANDE 4 NW	51	1020 AM	4/26	ELEV 4183 FT	WSMR
WHITE SANDS NAT MON	49	1040 AM	4/26	ELEV 4063 FT	WSMR
KALM	45	1055 AM	4/26	ELEV 4196 FT	AWOS
SUNSPOT	43	825 AM	4/26	ELEV 9255 FT	WSMR
OROGRANDE 15 W	42	1050 AM	4/26	ELEV 4029 FT	WSMR
OROGRANDE 28 ENE	41	1137 AM	4/26	ELEV 4886 FT	RAWS
TULAROSA 9 W	38	1035 AM	4/26	ELEV 4050 FT	WSMR
MAYHILL 1 NNE	37	1101 AM	4/26	ELEV 6471 FT	RAWS
MAYHILL 3 WNW	37	142 PM	4/26	ELEV 7275 FT	CWOP
SUNSPOT 1 S	35	915 AM	4/26	ELEV 9082 FT	RAWS

...SIERRA COUNTY...

TULAROSA 20 WNW	49	1020 AM	4/26	ELEV 4055 FT	WSMR
TULAROSA 22 NW	46	1030 AM	4/26	ELEV 4085 FT	WSMR

TEXAS

...EL PASO COUNTY...

EL PASO 17NNE	56	1100 AM	4/26	ELEV 4000 FT	CWOP
EL PASO 16NNE	54	1000 AM	4/26	ELEV 4000 FT	F69T TCEQ
EL PASO 2 NNE	43	1112 AM	4/26	ELEV 4808 FT	CWOP
EL PASO 10 NE	41	446 PM	4/26	ELEV 3940 FT	CWOP
HORIZON CITY 1 N	35	1123 AM	4/26	ELEV 4037 FT	CWOP

...HUDSPETH COUNTY...

DELL CITY 15 ENE	41	1253 PM	4/26	ELEV 3873 FT	RAWS
SALT FLAT 9 ESE	39	203 PM	4/26	ELEV 3691 FT	CWOP

Selected weather reports April 2015

Date/Time	Location	Event
4/8/2015 445 PM	SAN AUGUSTIN PASS-DONA ANA	PEAK WIND GUST 74 MPH
4/8/2015 237 PM	OROGRANDE 28 ENE-OTERO	PEAK WIND GUST 63 MPH
4/8/2015 329 PM	MESCALERO-OTERO	PEAK WIND GUST 57 MPH
4/8/2015 249 PM	EL PASO-AIRPORT	PEAK WIND GUST 55 MPH
4/8/2015 352 PM	COLUMBUS-LUNA	PEAK WIND GUST 55 MPH
4/8/2015 335 PM	NORTHRUP STRIP-DONA ANA	PEAK WIND GUST 53 MPH
4/8/2015 200 PM	TULAROSA-OTERO	PEAK WIND GUST 52 MPH
4/8/2015 415 PM	WSMR MAIN POST-DONA ANA	PEAK WIND GUST 50 MPH
4/8/2015 400 PM	SUNLAND PARK-DONA ANA	PEAK WIND GUST 47 MPH
4/8/2015 353 PM	DELL CITY-HUDSPETH	PEAK WIND GUST 47 MPH
4/8/2015 500 PM	SANTA TERESA-DONA ANA	PEAK WIND GUST 45 MPH
4/8/2015 500 PM	LA UNION-DONA ANA	PEAK WIND GUST 43 MPH
4/13/ 2015 854 AM	SUNSPOT-OTERO	SNOWFALL- 4.0 INCHES
4/16/2015 226 AM	DRIPPING SPRINGS-DONA ANA	PEAK WIND GUST 61 MPH

Selected weather reports April 2015

Date/Time	Location	Event
4/16/2015 226 AM	DRIPPING SPRINGS-DONA ANA	PEAK WIND GUST 61 MPH
4/16/2015 135 AM	WSMR MAIN POST-DONA ANA	PEAK WIND GUST 55 MPH
4/16/2015 351 PM	EL PASO 5NE	PEAK WIND GUST 49 MPH
4/16/2015 457 PM	SPACEPORT AMERICA-DONA ANA	PEAK WIND GUST 48 MPH
4/16/2015 347 PM	MAYHILL-OTERO	PEAK WIND GUST 47 MPH
4/16/2015 135 PM	LAS CRUCES-AIRPORT	PEAK WIND GUST 44 MPH
4/16/2015 220 PM	TULAROSA-OTERO	PEAK WIND GUST 42 MPH
4/16/2015 212 PM	SANTA TERESA-DONA ANA	PEAK WIND GUST 41 MPH
4/17/2015	MULE CREEK-GRANT	LOW TEMPERATURE: 19°
4/17/2015	GILA CENTER-GRANT	LOW TEMPERATURE: 19°
4/17/2015	JORNADA RANGE-DONA ANA	LOW TEMPERATURE: 21°
4/17/2015	INN OF MTN GODS-OTERO	LOW TEMPERATURE: 22°
4/17/2015	CLOUDCROFT-OTERO	LOW TEMPERATURE: 24°
4/17/2015	SILVER CITY 5NE-GRANT	LOW TEMPERATURE: 26°
4/17/2015	DEMING-LUNA	LOW TEMPERATURE: 28°

Selected weather reports April 2015

Date/Time	Location	Event
4/24/ 2015 700 AM	CLOUDCROFT-OTERO	SNOWFALL-2.0 INCHES
4/24/ 2015 700 AM	CLOUDCROFT 2S-OTERO	RAINFALL- 0.58 INCHES
4/24/ 2015 700 AM	HIGH ROLLS-OTERO	RAINFALL- 0.53 INCHES
4/24/ 2015 700 AM	SUNSPOT-OTERO	RAINFALL- 0.31 INCHES
4/24/ 2015 800 AM	ORGAN-DONA ANA	RAINFALL- 0.26 INCHES
4/26/ 2015 1139 AM	PINOS ALTOS-GRANT	SNOWFALL- 2.0 INCHES
4/26/ 2015 101 PM	CLOUDCROFT-OTERO	SNOWFALL- 1.5 INCHES