

# MAY 2015

## Weather Digest

**Weather Summary**

**Significant Events**

**Special Features**

**Temperature &  
Precipitation**

**Severe Weather**

# May 2015 Weather Summary

May ended up showing a definite El Niño pattern as the jet stream and storm track for much of the month remained over the Desert Southwest. Despite this pattern for much of the month, all was mostly quiet for nearly the first two weeks, with just an upper low passing through on the 4<sup>th</sup> bringing significant moisture to the area. This day also produced some thunderstorms and small hail over the Sacramento Mountains.

On May 12<sup>th</sup>, a cool front moved in from the east, a pattern that was to be repeated several times the latter half of May. This first front produced widespread moderate rainfall from the Rio Grande Valley east. On the 14<sup>th</sup>, strong moist flow from the south ahead of an upper low over southern California produced scattered thunderstorms. Most of these storms were wind makers as opposed to rain, with numerous of winds in the 50 to 60 mph range.

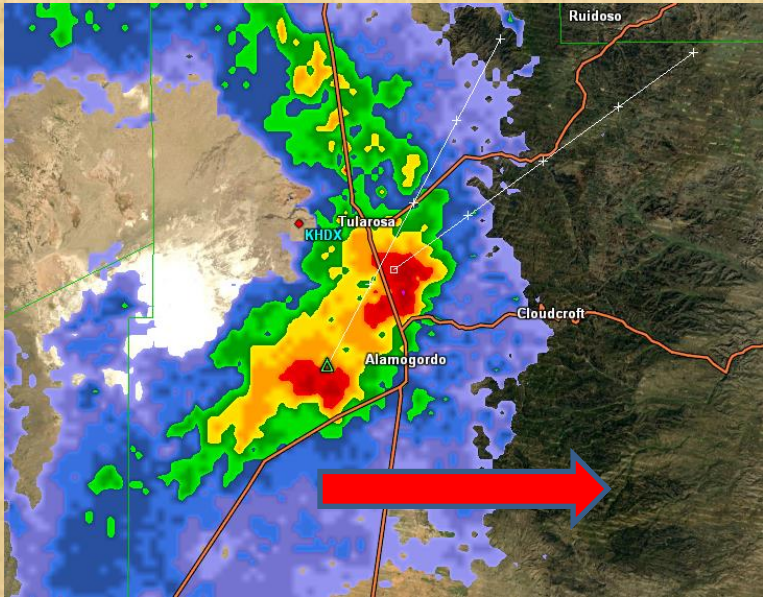
Strong cool fronts pushed west across the Borderland on the 21<sup>st</sup> and 30<sup>th</sup> again, producing heavy rain across much of the Rio Grande Valley, along with a few reports of near severe weather. The other typical characteristic of an El Niño pattern, given consistent cloud cover, is cooler than normal temperatures. Most of the reporting sites around the area reported monthly average temperatures of 1 to 4 degrees below normal.

One non-weather related characteristic of May, though very important for the area, is the first water release from Caballo Dam into the Rio Grande. During drought years this typically occurs in May, and this year the water release began on May 26<sup>th</sup>.



## Full moon and clouds May 3





**Hail in the Sacramento Mountains May 4**





# May 4 Storms

**El Paso County**

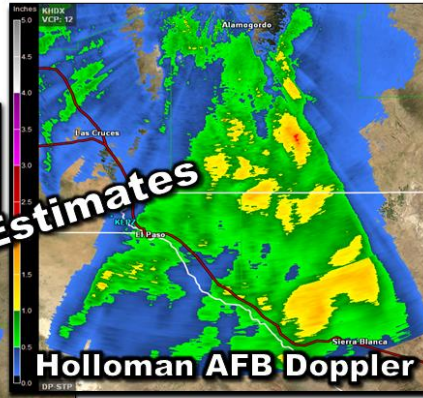
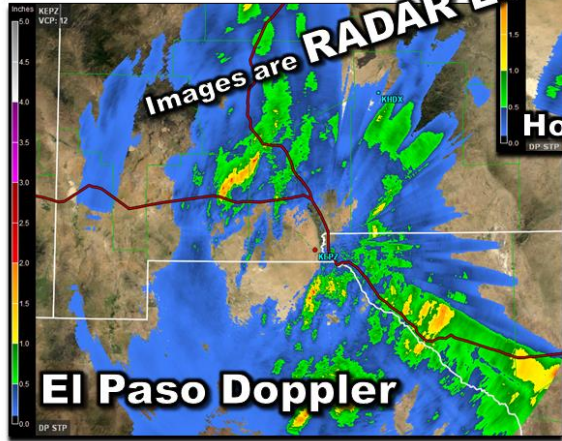
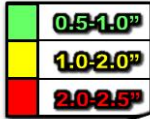


**Otero County**



# El Paso County May 12

## Borderland Rainfall



### Actual Rainfall Reports

El Paso Airport	.53"
Far E. El Paso	.64"
Las Cruces Airport	.24"
NE Las Cruces	.49"
Holloman AFB	.69"
Deming	.16"
Truth or Consq.	.29"
Cloudcroft	.47"
NE Las Cruces	.49"
McGreggor Range	1.11"





# Truth or Consequences May 12



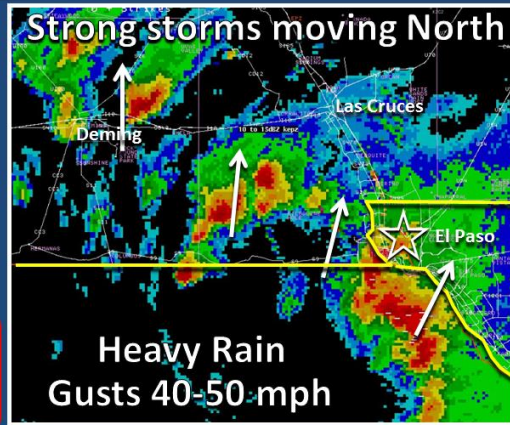
# National Weather Service Radar

**3:10PM** – Southern New Mexico & Far West Texas

## Thunderstorms Moving In

All storms tracking to the north into Luna, Dona Ana, & El Paso Counties

**Threats: Heavy Rain  
Possible hail and  
strong wind gusts**



# El Paso Thunderstorms on May 14 50-60 mph wind gusts

000  
NWUS54 KEPZ 142140  
LSREPZ

PRELIMINARY LOCAL STORM REPORT  
NATIONAL WEATHER SERVICE EL PASO TX  
340 PM MDT THU MAY 14 2015

..TIME...	..EVENT...	..CITY LOCATION...	..LAT..LON...
..DATE...	..MAG....	..COUNTY LOCATION..ST..	..SOURCE....
..REMARKS..			
0305 PM	TSTM WND GST	4 WNW SANTA TERESA	31.87N 106.70W
05/14/2015	M60 MPH	DONA ANA NM	NWS OFFICE





# Las Cruces May 15





# Memorial Day Weekend Balloon Festival Anthony, New Mexico

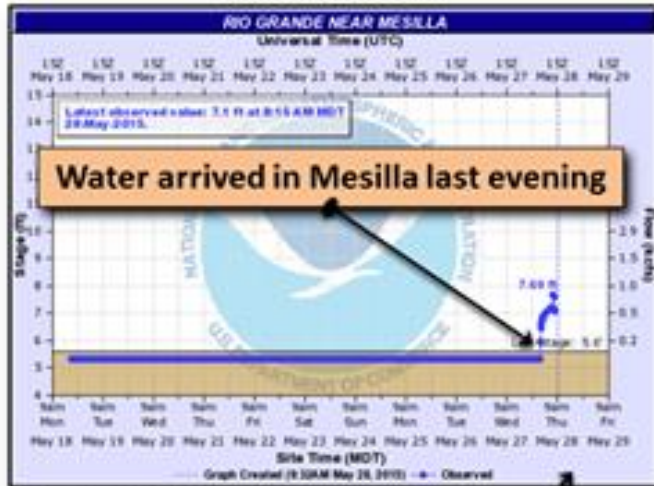




**Water in the Rio Grande arrives  
at Mesilla May 27**



# Water release from Caballo Dam creeps southward very slowly down the Rio Grande



## Water in the Rio



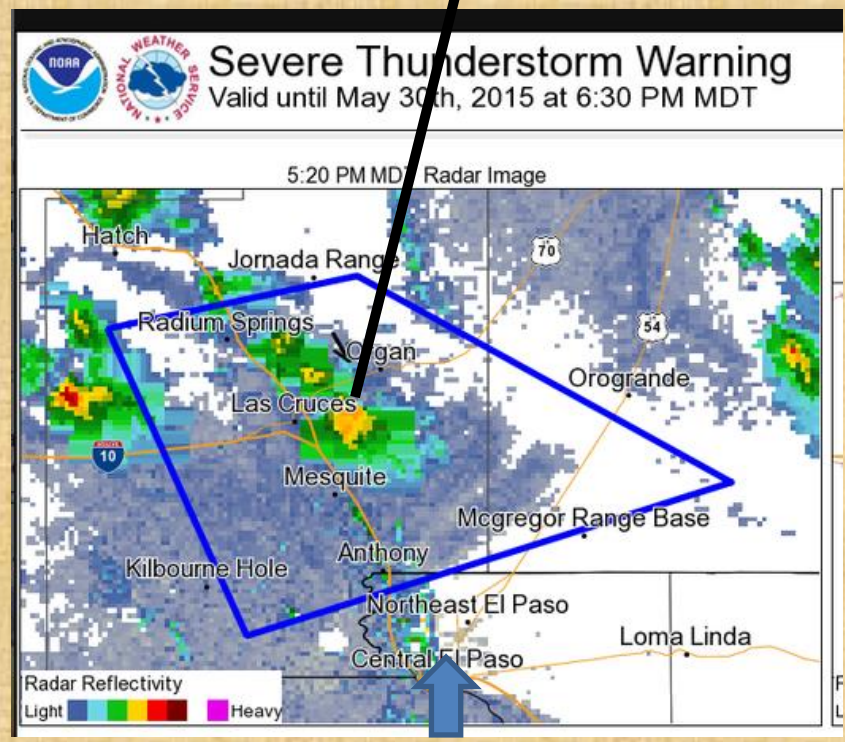
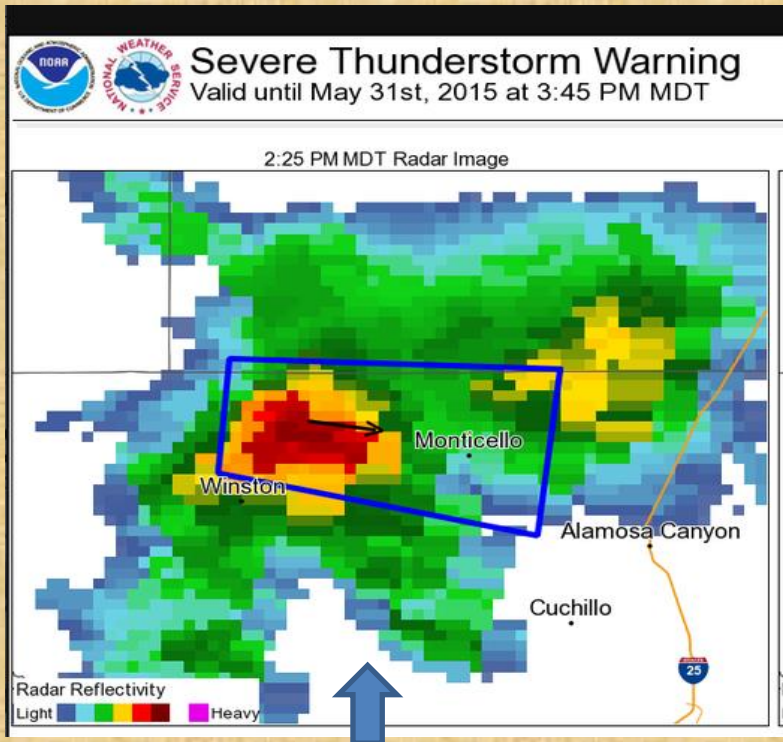




**Severe Thunderstorm over Cloudcroft May 30**



**One inch diameter hail Las Cruces May 30**





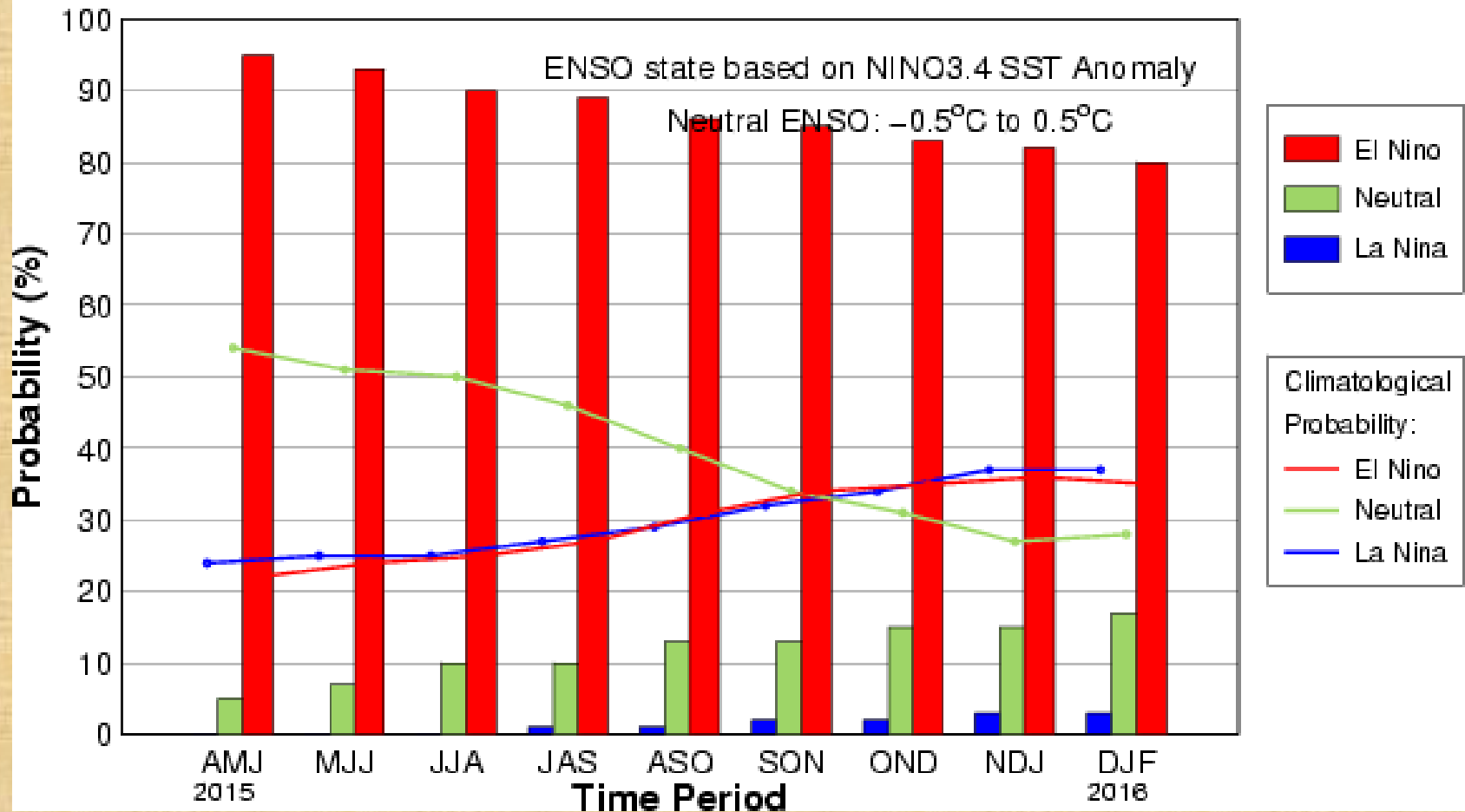


**The Monthly Weather  
Digest is Compiled Here at  
NWS El Paso/Santa Teresa  
Office**



# ENSO Forecast from May 14

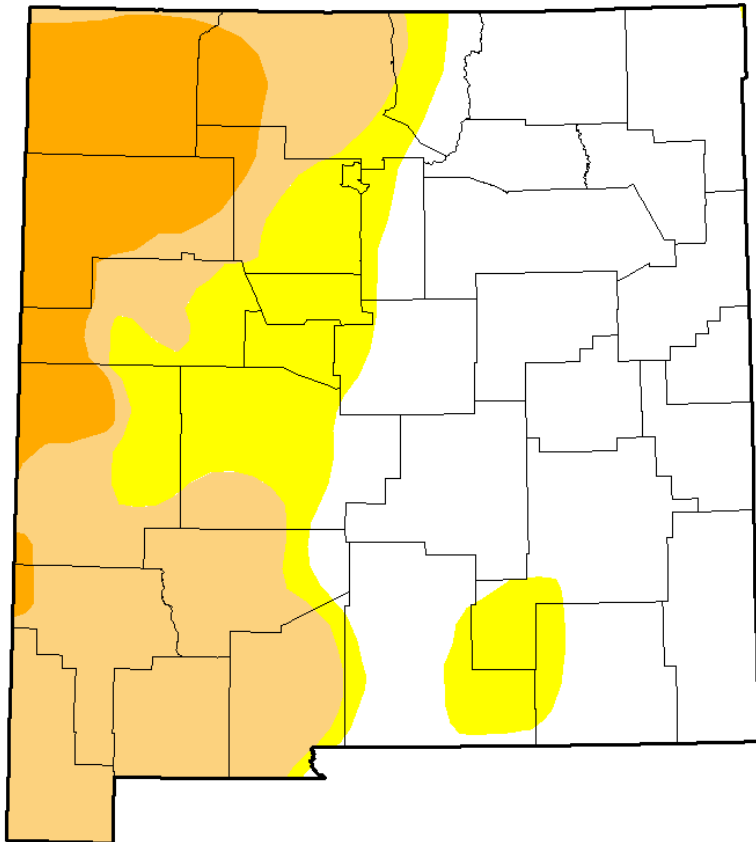
Early-May CPC/IRI Consensus Probabilistic ENSO Forecast



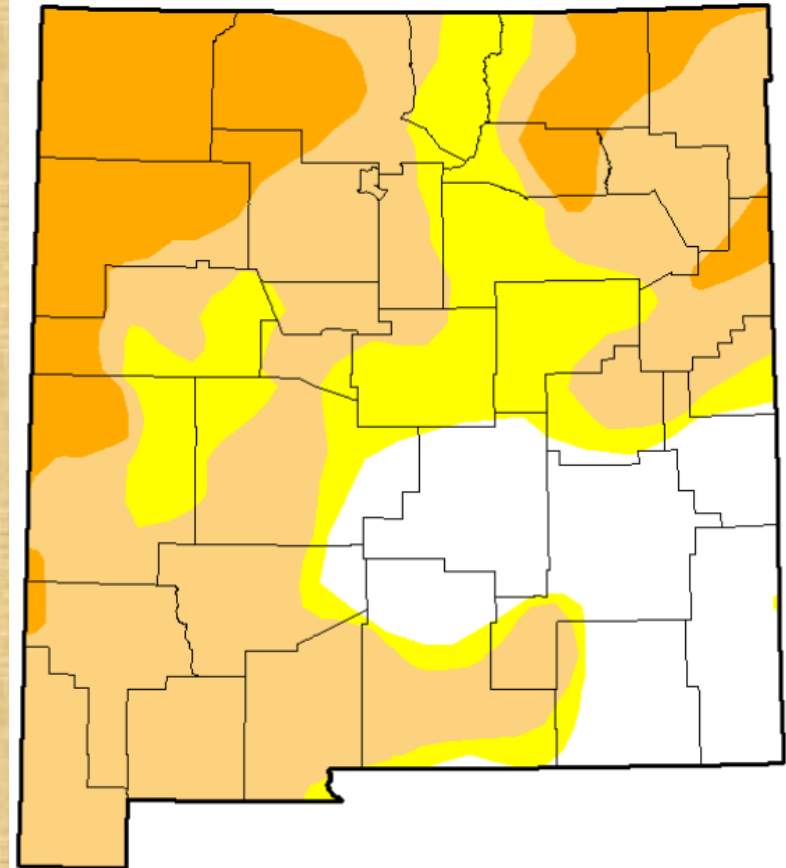
# Current drought conditions for New Mexico and 3 month change

- Abnormally Dry – D0
- Moderate Drought – D1
- Severe Drought – D2
- Extreme Drought – D3
- Exceptional – D4

**May 26, 2015**







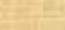
**March 24, 2015**

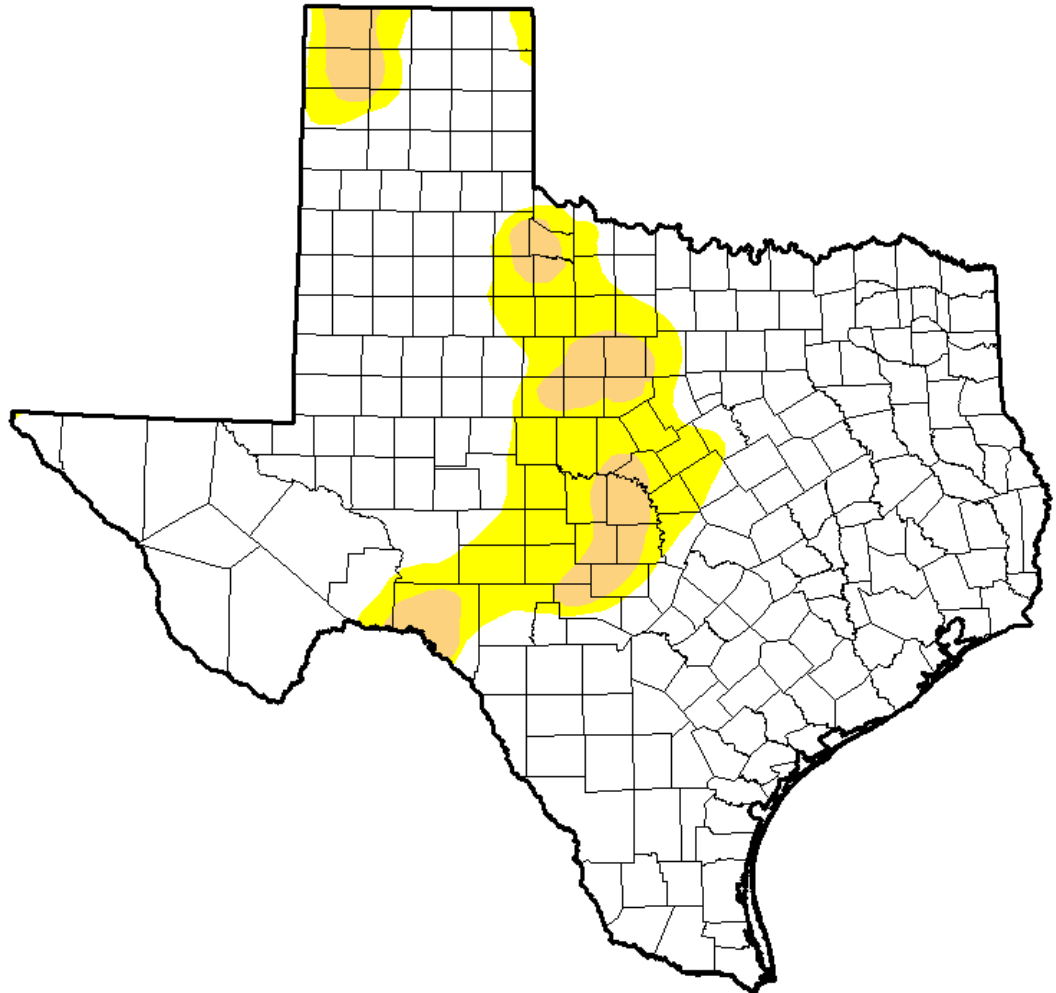




# Current drought conditions for Texas as of May 26

Intensity:

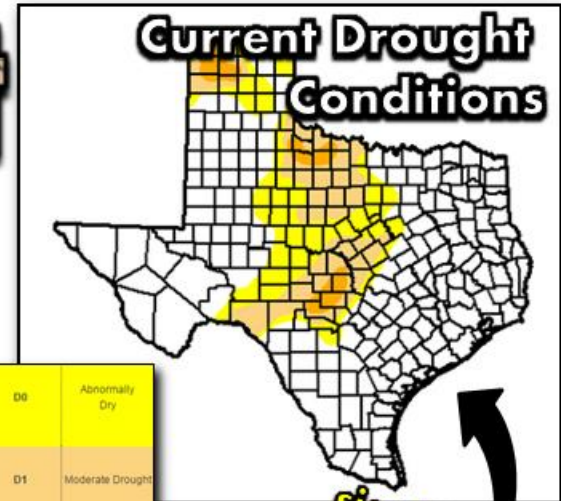
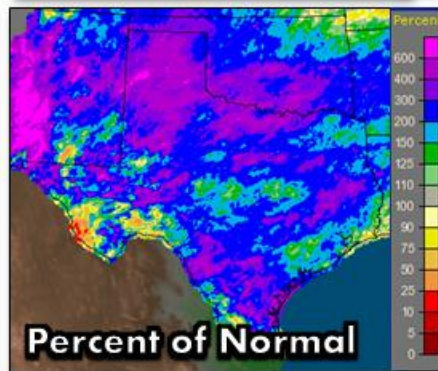
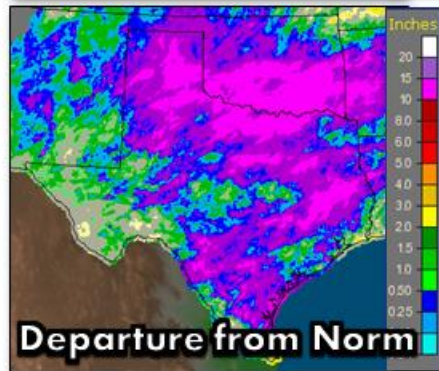
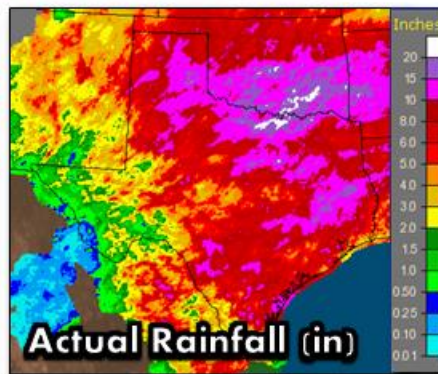
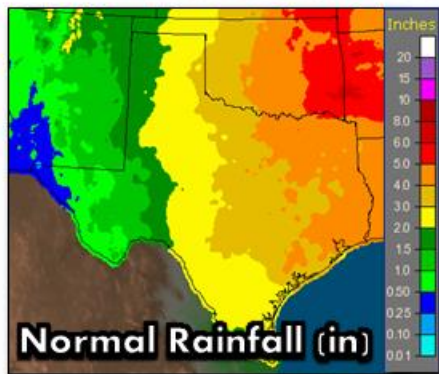
-  D0 - Abnormally Dry
-  D1 - Moderate Drought
-  D2 - Severe Drought
-  D3 - Extreme Drought
-  D4 - Exceptional Drought



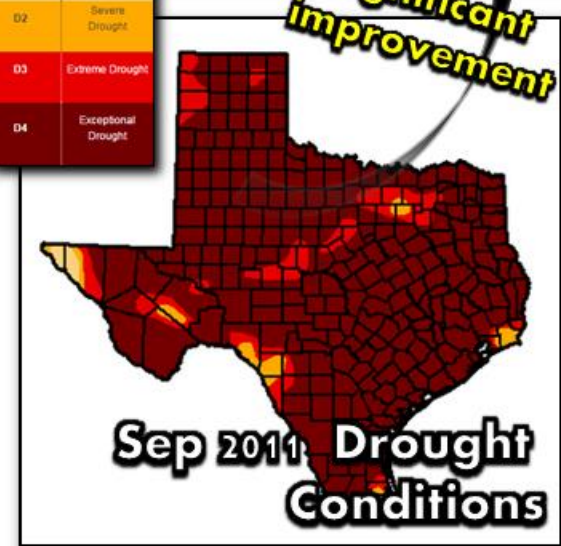
**May ends much of drought across Texas. Unfortunately, considerable flooding took place to end the drought**

# How to End a Drought

**30 Day Texas Rainfall Info**  
**...3 to 6 times normal rainfall...**



00	Abnormally Dry
01	Moderate Drought
02	Severe Drought
03	Extreme Drought
04	Exceptional Drought



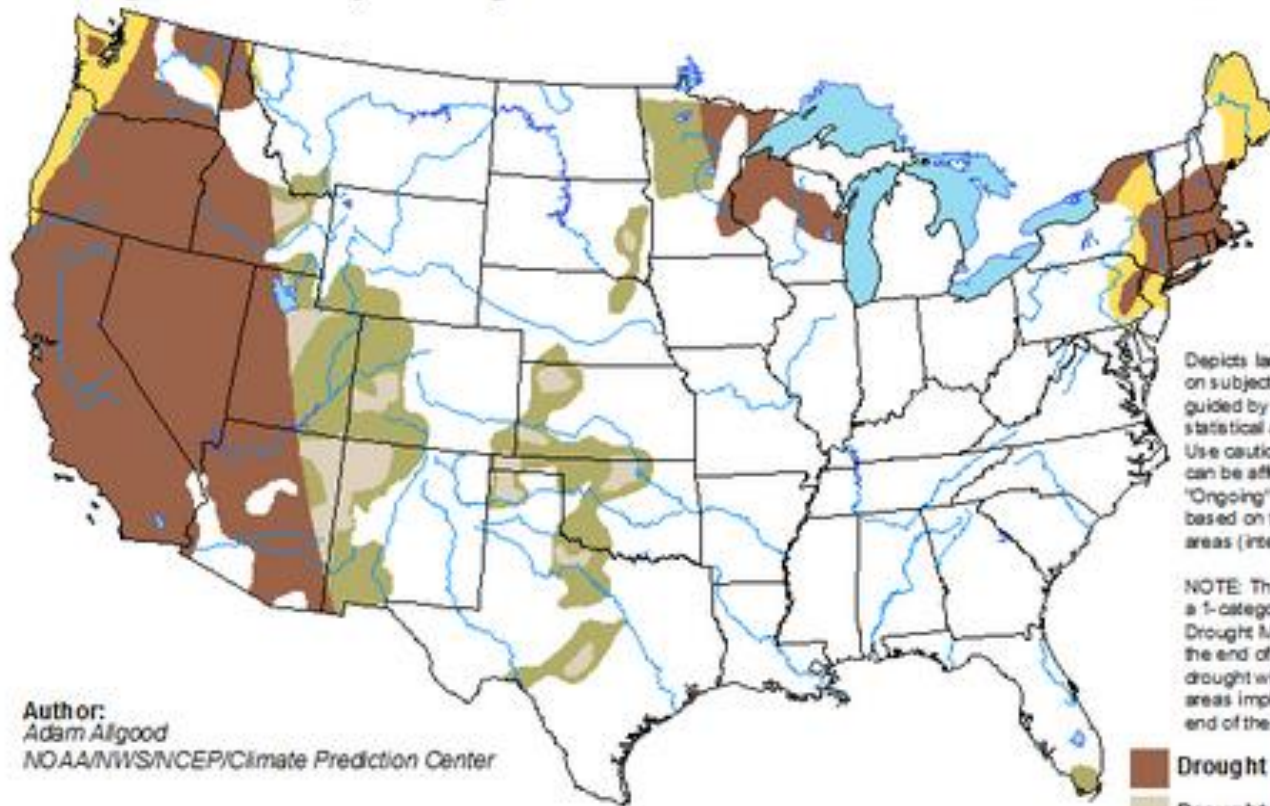
*significant improvement*



# Seasonal Outlook (May 21 – August 31)

## U.S. Seasonal Drought Outlook Drought Tendency During the Valid Period





Valid for May 21 - August 31, 2015  
Released May 21, 2015

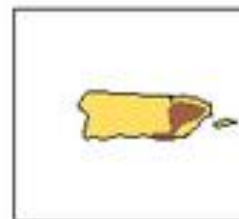


Depicts large-scale trends based on subjectively derived probabilities guided by short- and long-range statistical and dynamical forecasts. Use caution for applications that can be affected by short lived events. "Ongoing" drought areas are based on the U.S. Drought Monitor areas (intensities of D1 to D4).

NOTE: The tan areas imply at least a 1-category improvement in the Drought Monitor intensity levels by the end of the period, although drought will remain. The green areas imply drought removal by the end of the period (D0 or none).

Author:  
Adam Allgood  
NOAA/NWS/NCEP/Climate Prediction Center

-  Drought persists/intensifies
-  Drought remains but improves
-  Drought removal likely
-  Drought development likely

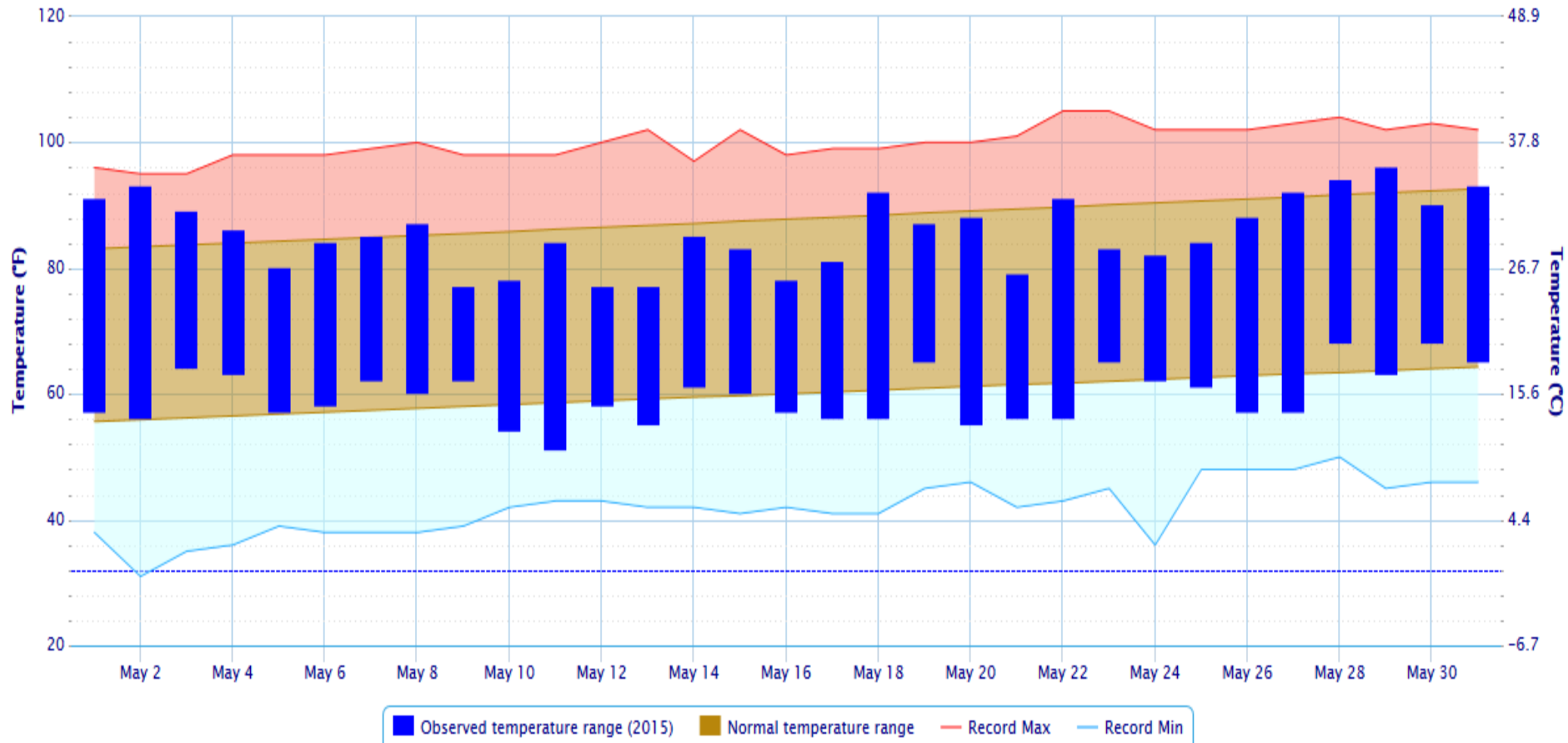


<http://go.usa.gov/hH7e>

# Daily temperature data for May in El Paso

Daily Temperature Data - El Paso Area, TX (ThreadEx)

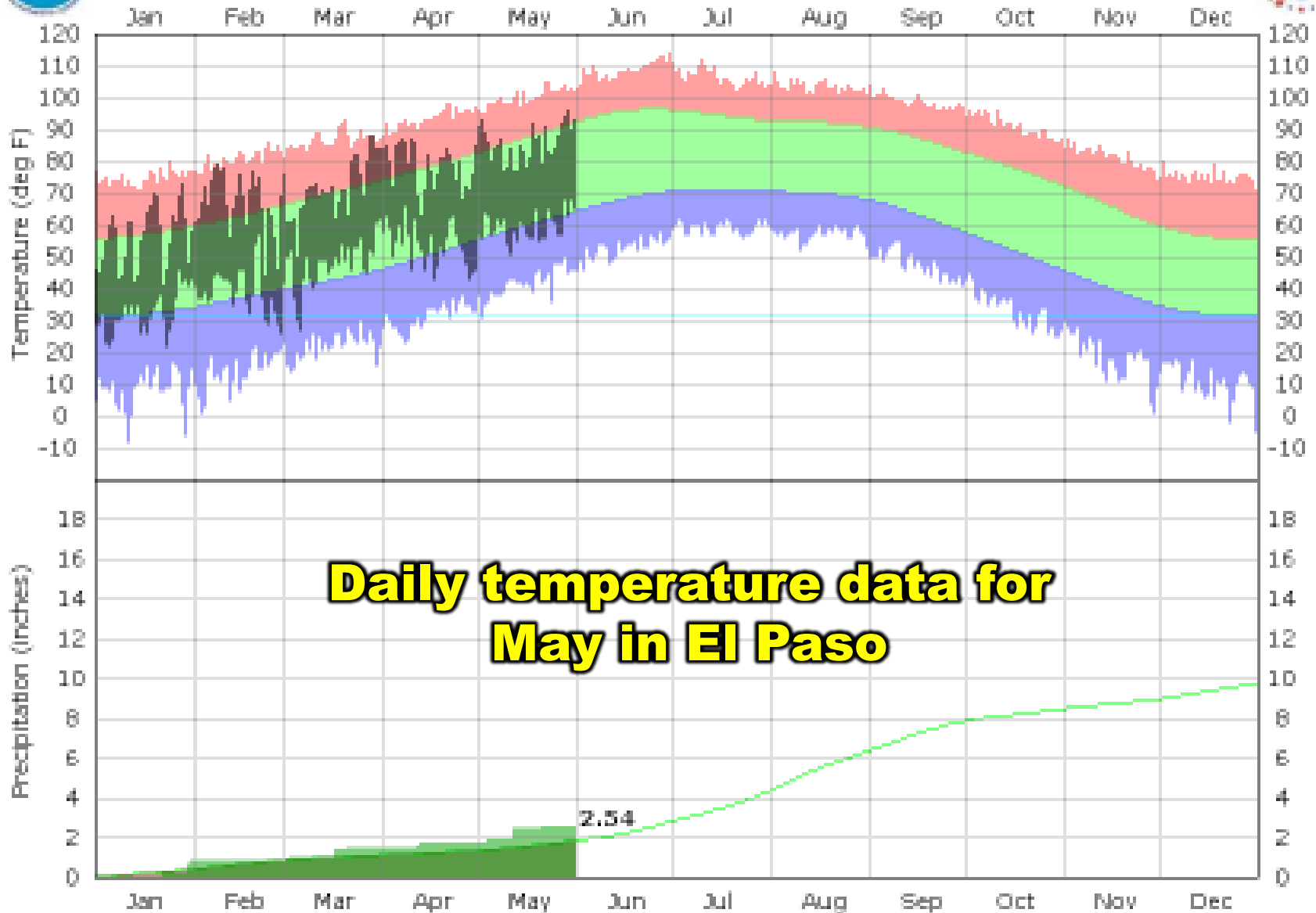
Period of Record - Max temperature: 1887-01-01 to 2015-05-31; Min temperature: 1879-01-01 to 2015-05-31. Normals period: 1981-2010. Click and drag to zoom chart.







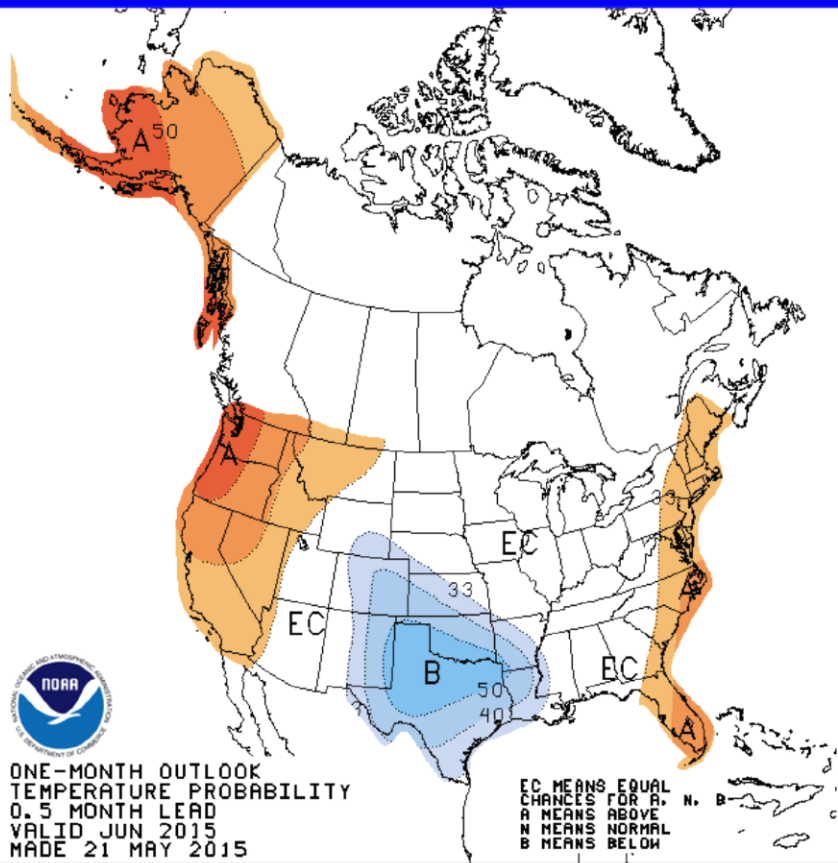
# El Paso TX - 2015



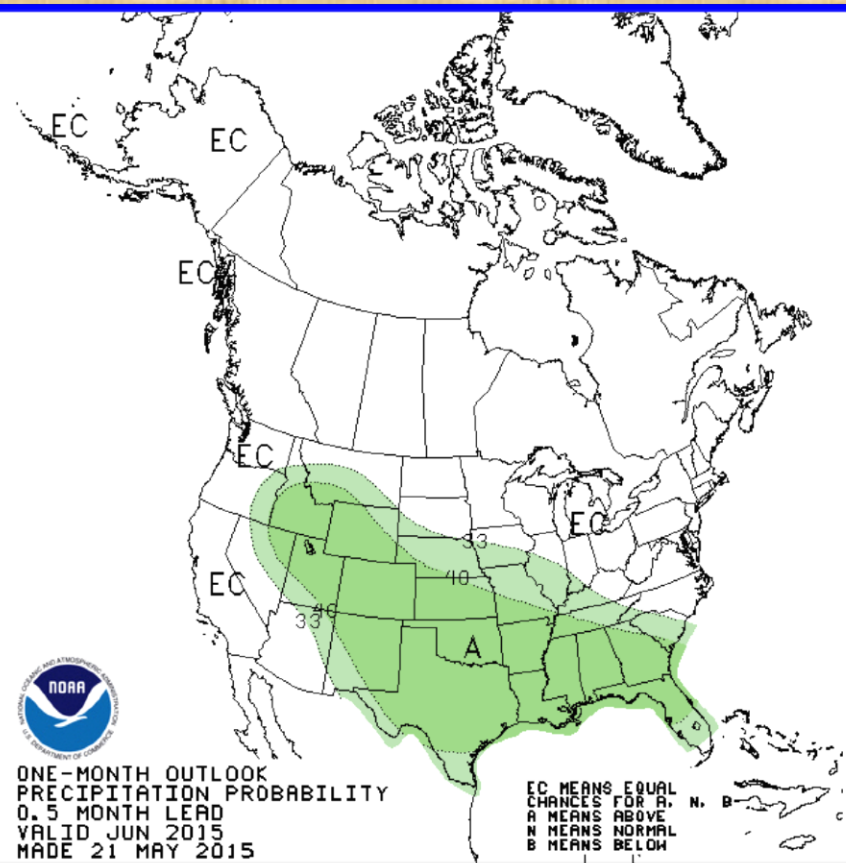
**Daily temperature data for  
May in El Paso**

# Temperature and precipitation outlook for June 2015

## Temperature



## Precipitation

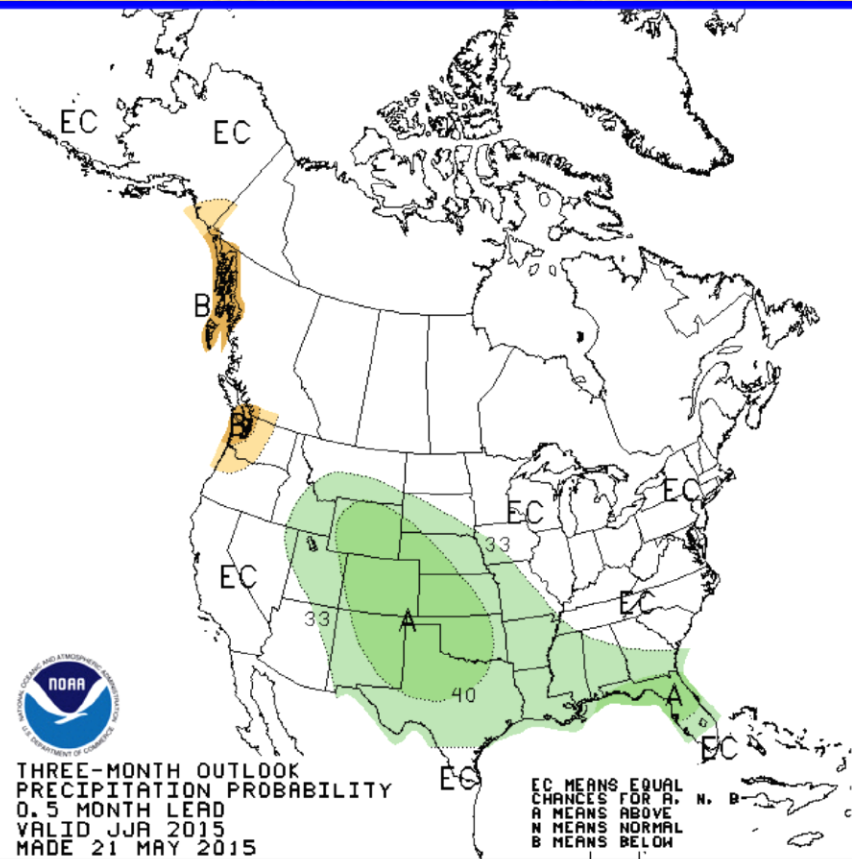
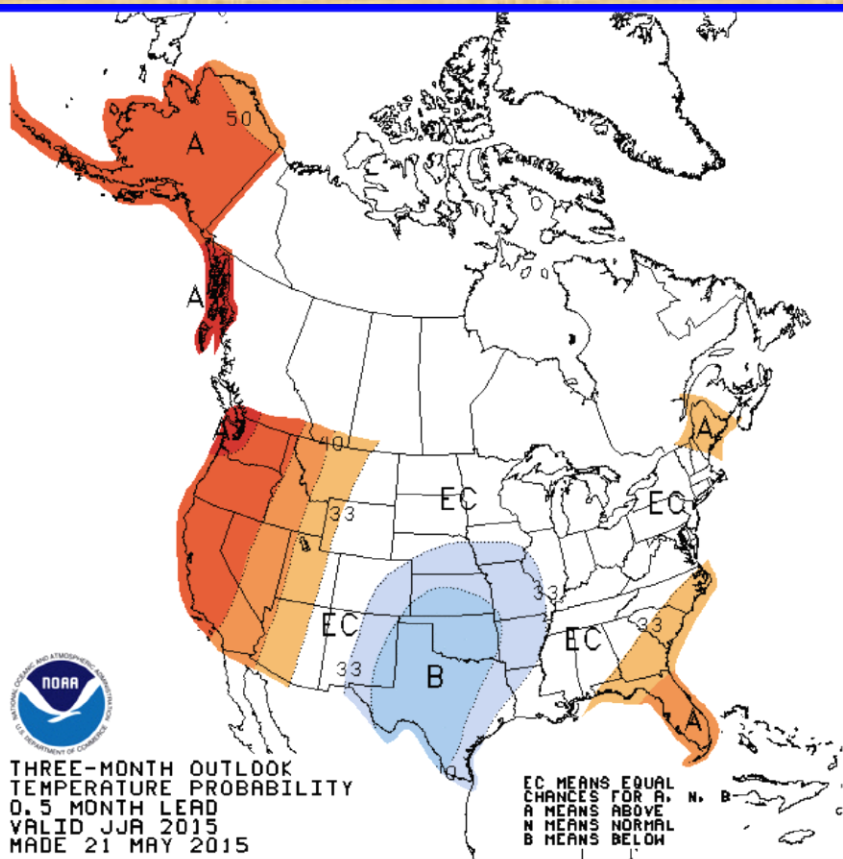




# Temperature and precipitation outlook for Jun - Aug 2015

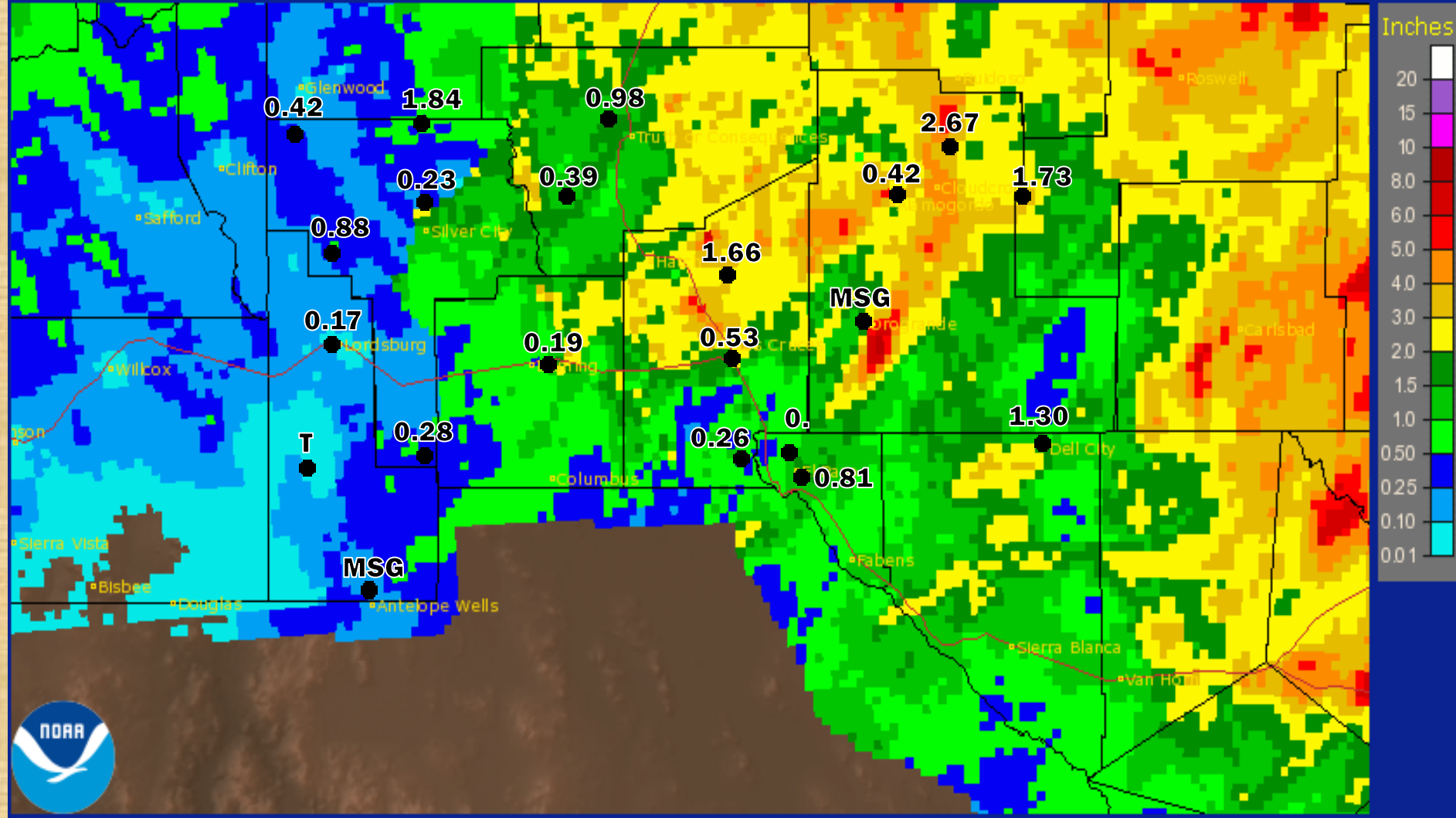
## Temperature

## Precipitation



# May 2015 radar rainfall estimate with surface rainfall reports

El Paso, TX (EPZ): May, 2015 Monthly Observed Precipitation  
Valid at 6/1/2015 1200 UTC - Created 6/2/15 22:15 UTC

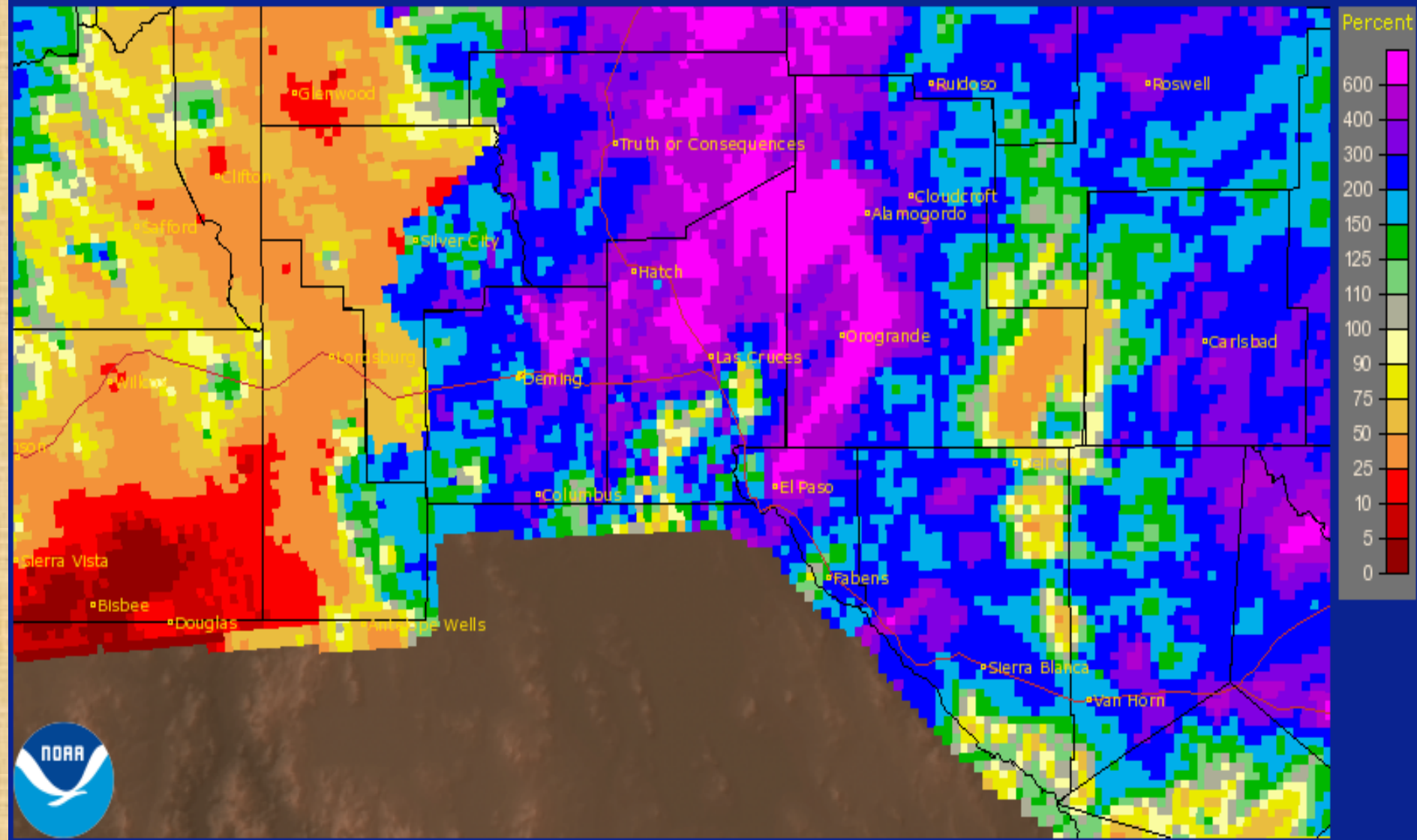




# May 2015 Radar Rainfall Estimate (Percent of normal)

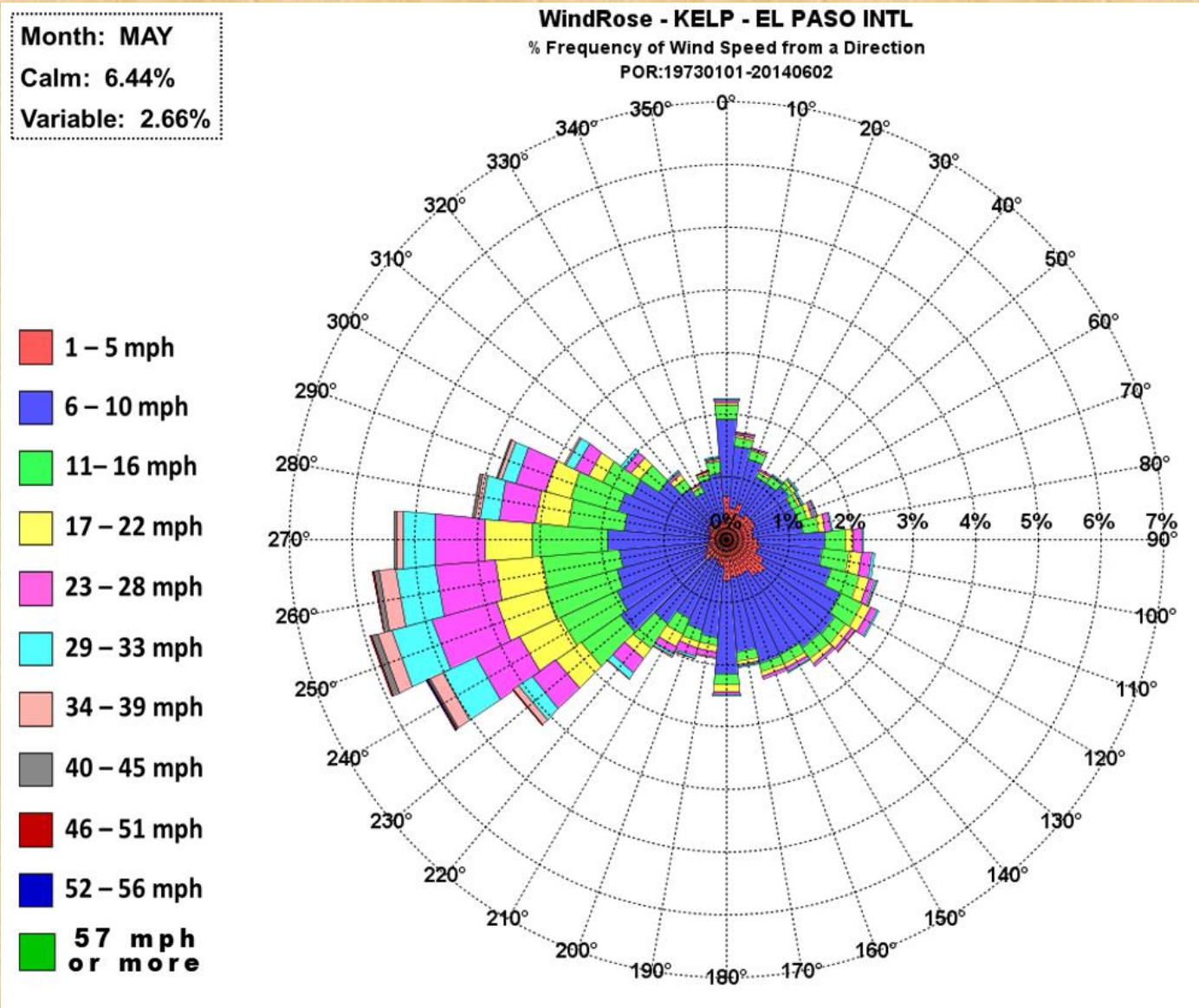
El Paso, TX (EPZ): May, 2015 Monthly Percent of Normal Precipitation

Valid at 6/1/2015 1200 UTC - Created 6/2/15 22:16 UTC



# Special Features

<http://www.srh.noaa.gov/epz/?n=elpwindrosedata>





# Selected weather reports May 2015

<b>Date/Time</b>	<b>Location</b>	<b>Event</b>
5/13/2015 900 AM	LEASBURG DAM STATE PARK	0.77 RAINFALL
5/13/2015 812 AM	5 SE LAS CRUCES	0.75 RAINFALL
5/13/2015 800 AM	16 ESE DEMING	0.77 RAINFALL
5/13/2015 800 AM	SUNSPOT-OTERO CO.	1.36 RAINFALL
5/13/2015 737 AM	28 ENE OROGRANDE	1.12 RAINFALL
5/13/2015 624 AM	6NW EL PASO	0.74 RAINFALL
5/14/2015 340 PM	SANTA TERESA NWS OFFICE	PEAK WIND GUST 60 MPH
5/21/2015 700 PM	16 NE WSMR MAIN POST	PEAK WIND GUST 60 MPH
5/21/2015 700 PM	2 SE DEMING	PEAK WIND GUST 51 MPH
5/21/2015 705 PM	20 SW TULAROSA	PEAK WIND GUST 53 MPH
5/21/2015 708 PM	HOLLOMAN AFB	PEAK WIND GUST 62 MPH
5/21/2015 715 PM	ALAMOGORDO	PEAK WIND GUST 55 MPH
5/21/2015 724 PM	1 SW HIGH ROLLS - OTERO	PEAK WIND GUST 58 MPH
5/30/2015 530 PM	LAS CRUCES	.75 TO 1 INCH HAIL
5/30/2015 547 PM	LAS CRUCES	.75 INCHES OF RAIN