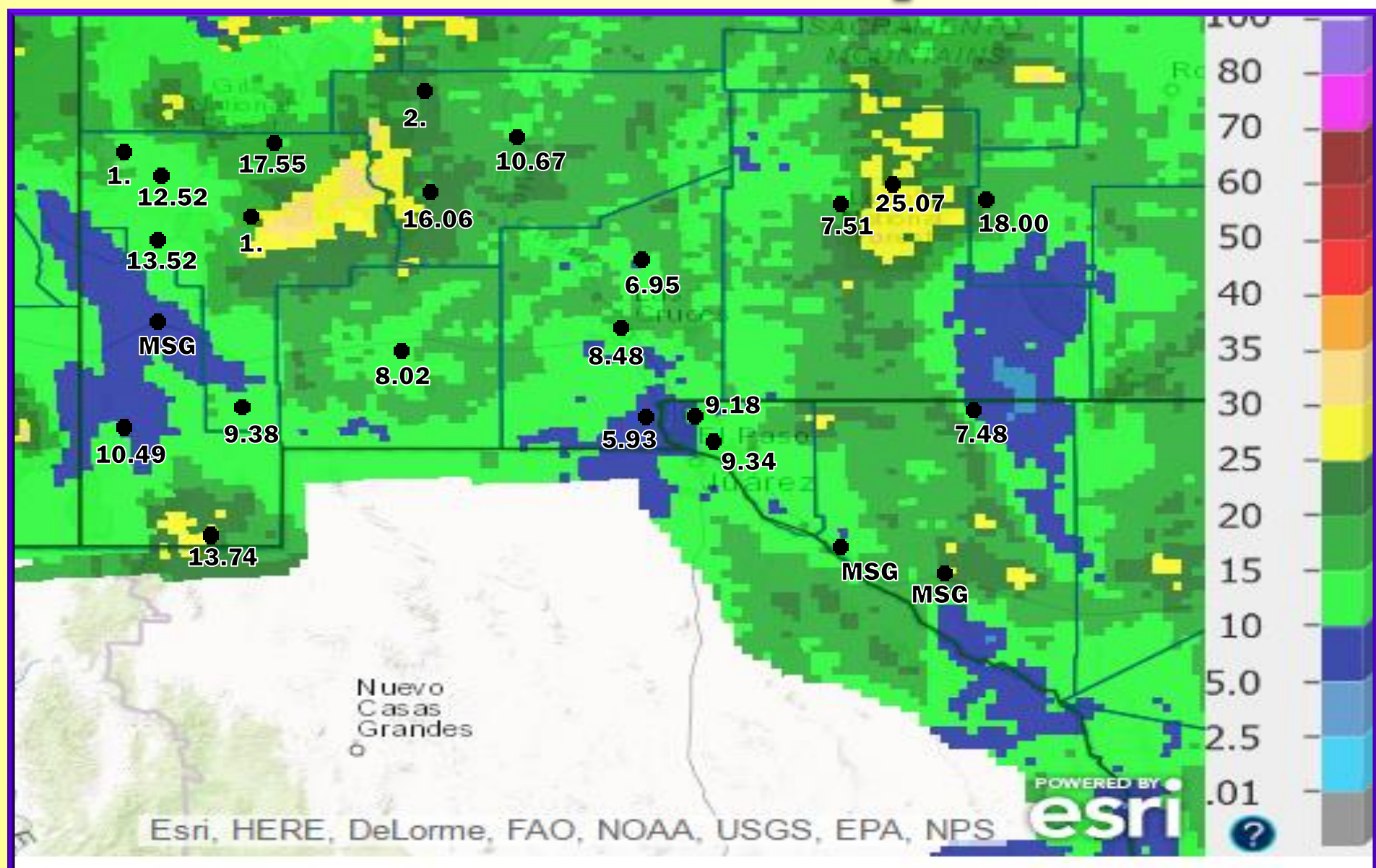


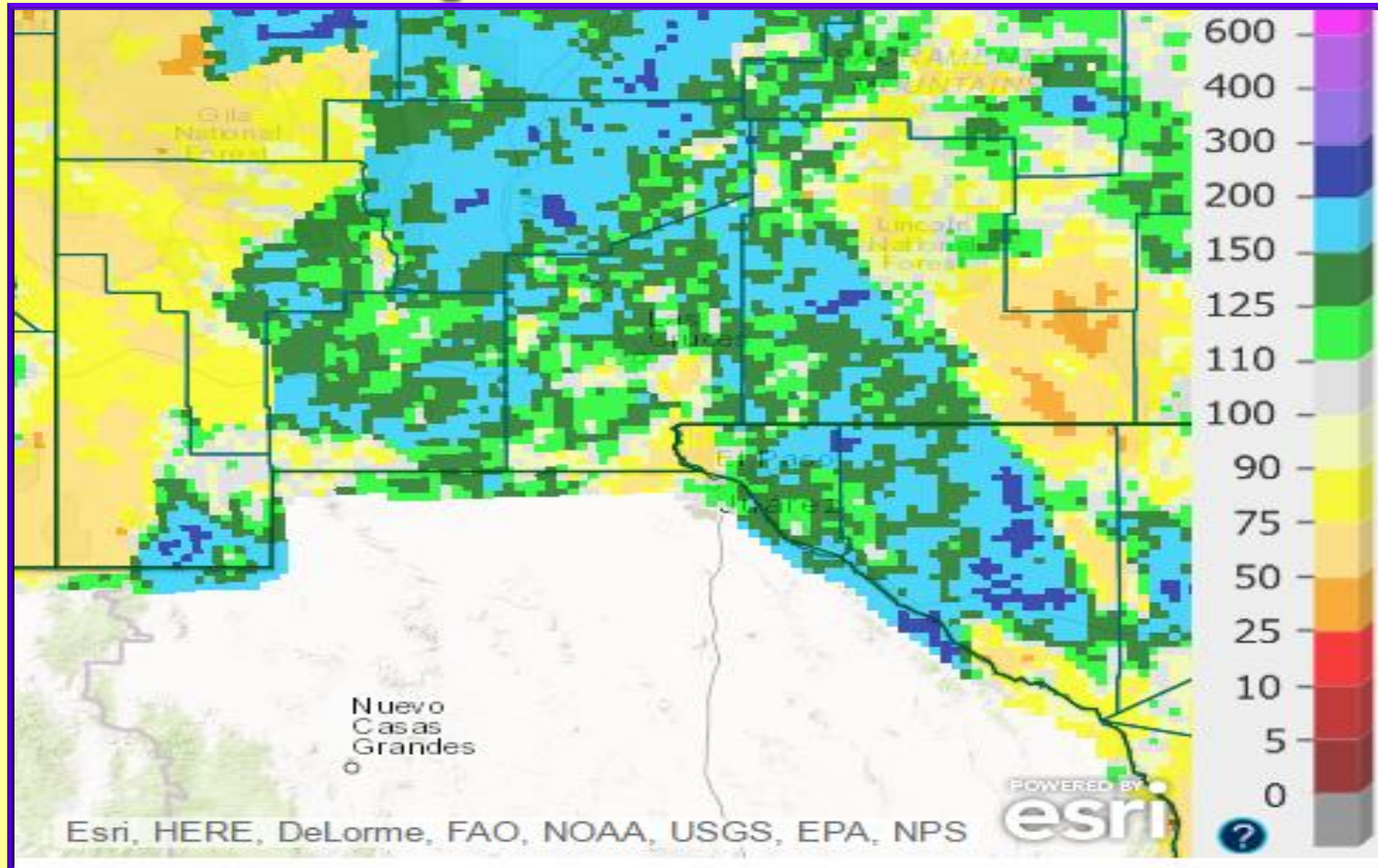
2016 in Review

- Rainfall data**
- Selected cities temp/precip data**
- Drought Data**
- El Paso statistics**

2016 radar rainfall estimate with surface rainfall reports



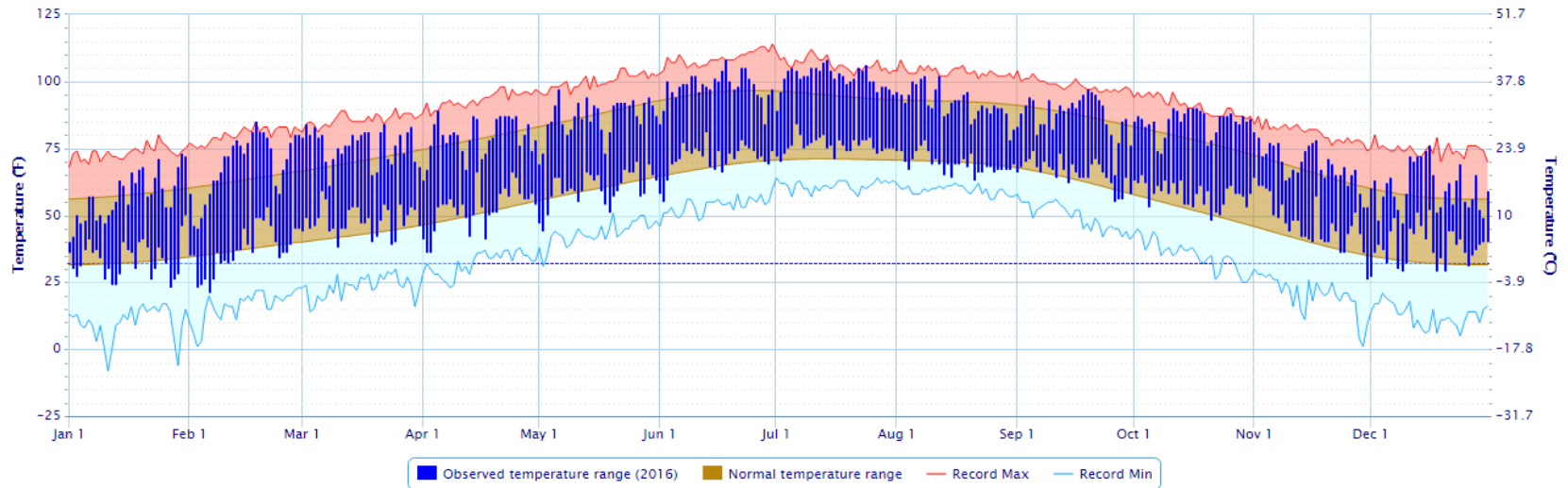
2016 radar rainfall estimate percent of normal



El Paso, TX 2016

Daily Temperature Data - EL PASO INTL AP, TX

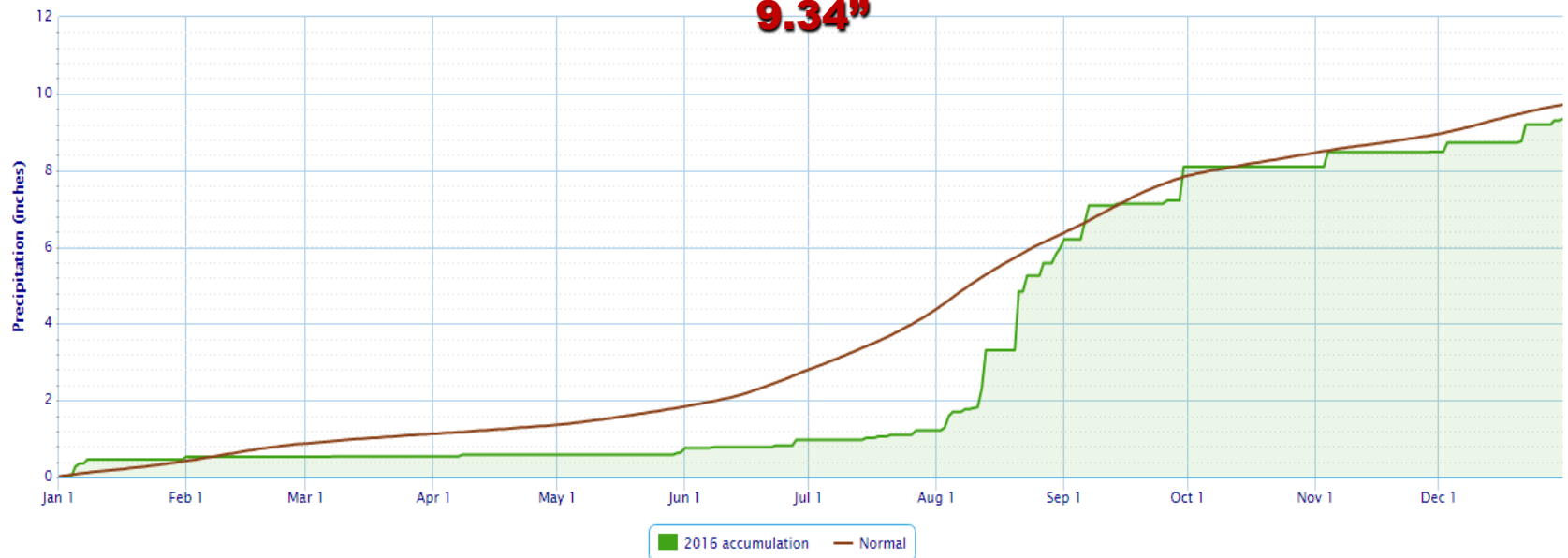
Period of Record - 1942-12-01 to 2017-01-02. Normals period: 1981-2010. Click and drag to zoom chart.



Accumulated Precipitation - EL PASO INTL AP, TX

Click and drag to zoom to a shorter time interval; green/black diamonds represent subsequent/missing values

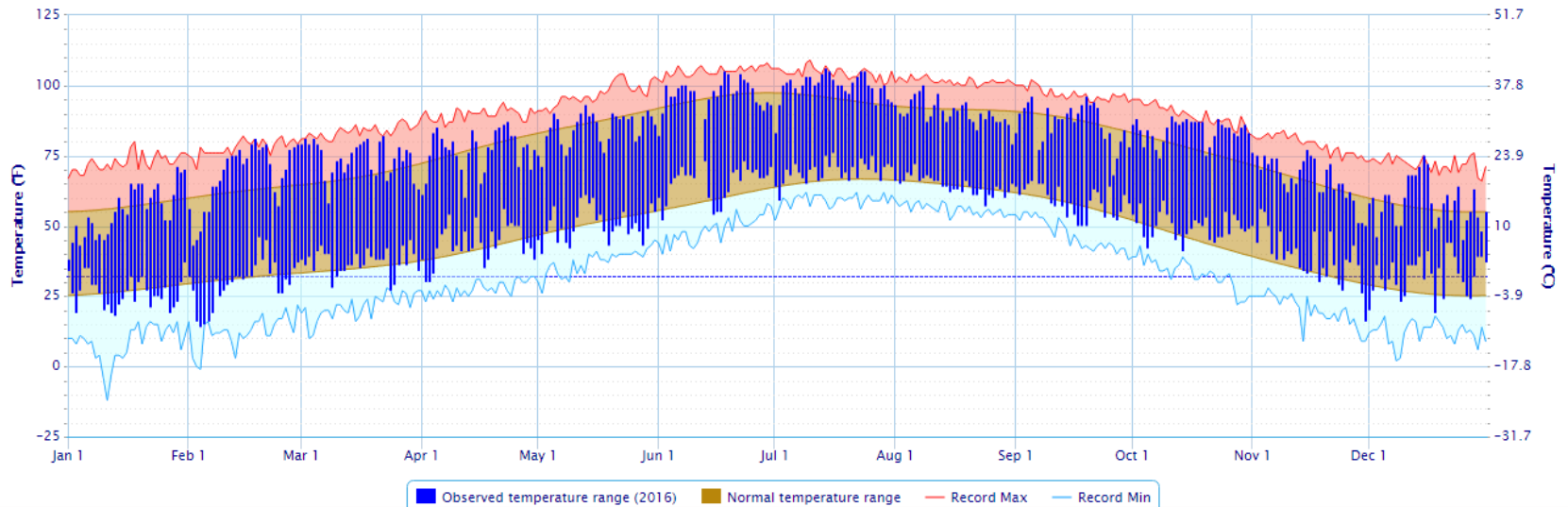
9.34"



Deming, NM 2016

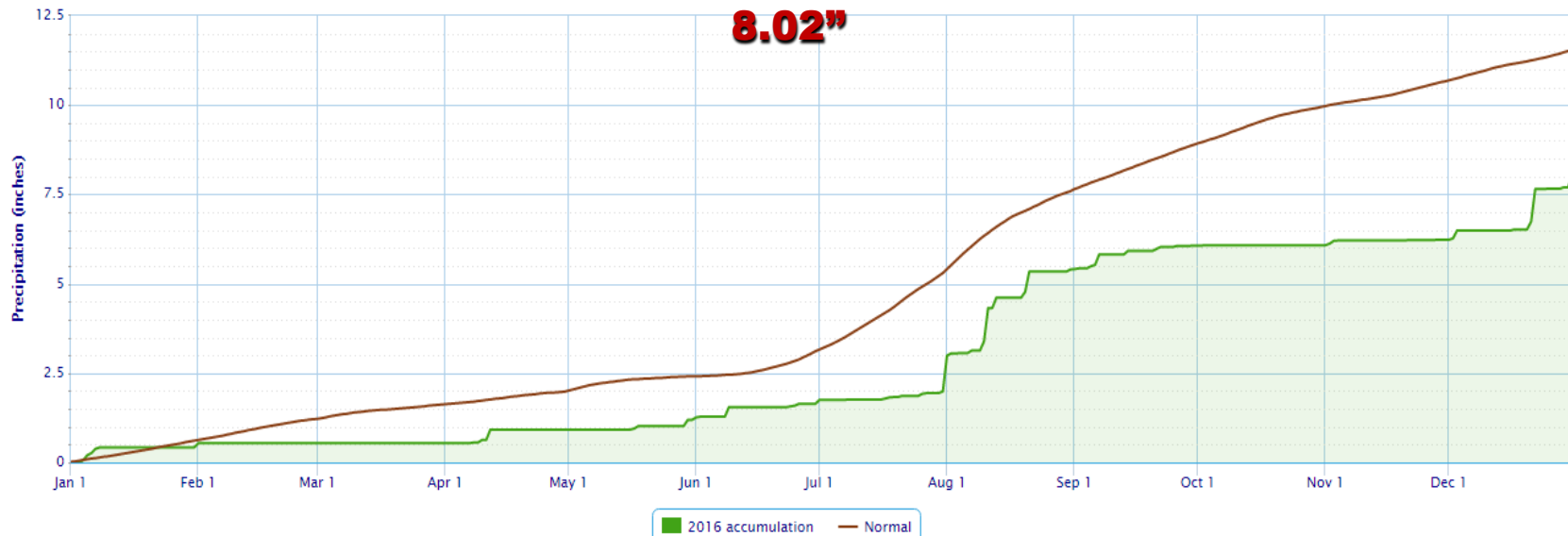
Daily Temperature Data - DEMING MUNI AP, NM

Period of Record - Max temperature: 1961-04-07 to 2017-01-02; Min temperature: 1961-04-08 to 2017-01-02. Normals period: 1981-2010. Click and drag to zoom chart.



Accumulated Precipitation - DEMING MUNI AP, NM

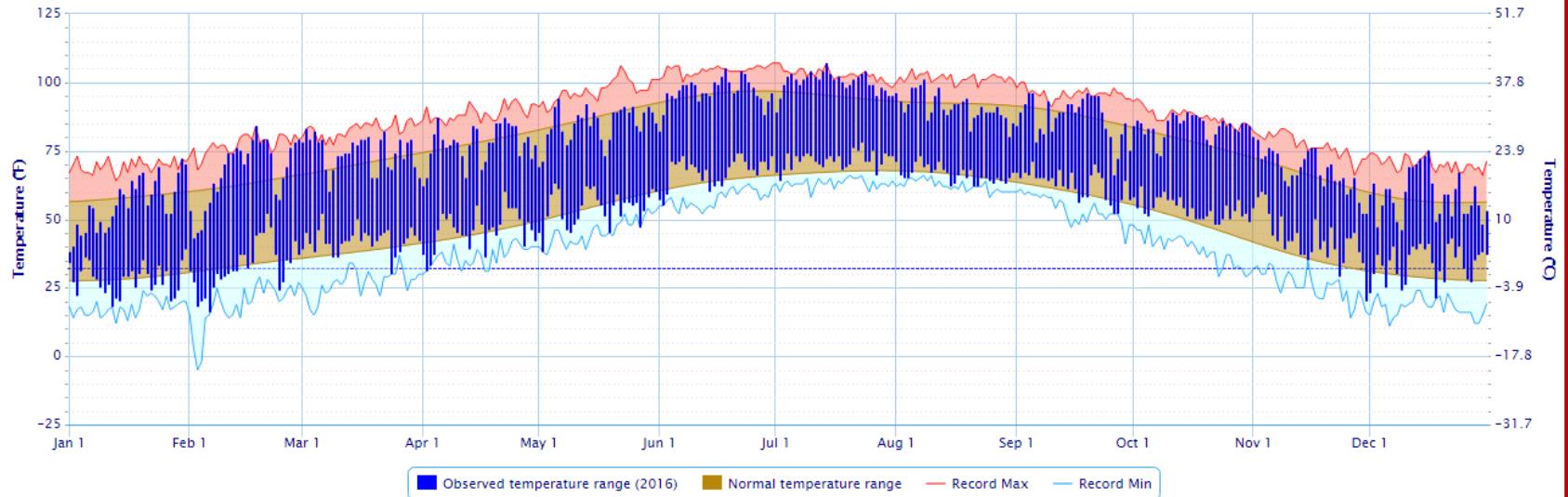
Click and drag to zoom to a shorter time interval; green/black diamonds represent subsequent/missing values



Santa Teresa, NM 2016

Daily Temperature Data – SANTA TERESA AP, NM

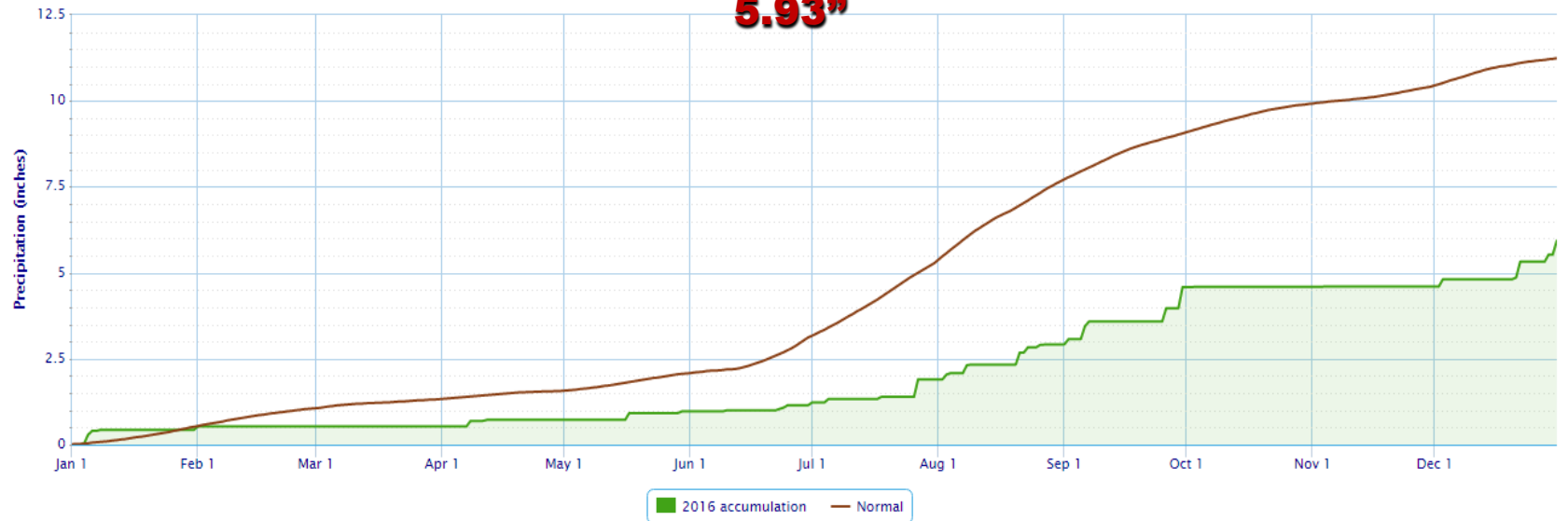
Period of Record – 2002-02-25 to 2017-01-02. Normals period: 1981-2010. Click and drag to zoom chart.



Accumulated Precipitation – SANTA TERESA AP, NM

Click and drag to zoom to a shorter time interval; green/black diamonds represent subsequent/missing values

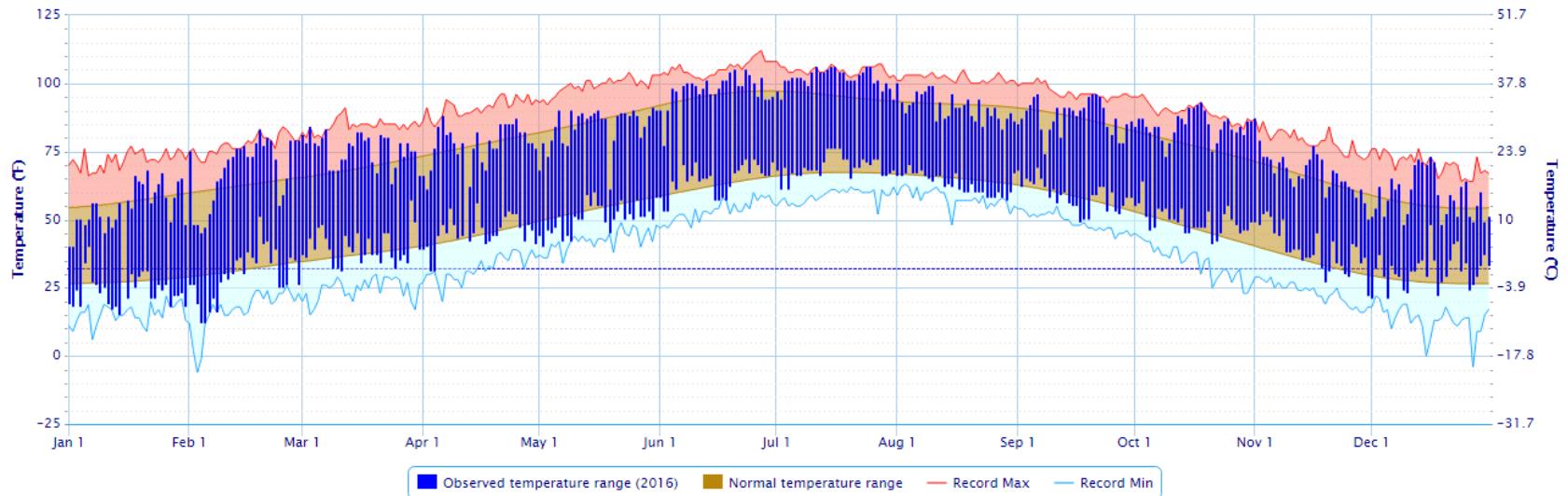
5.93"



Truth Or Consequences, NM 2016

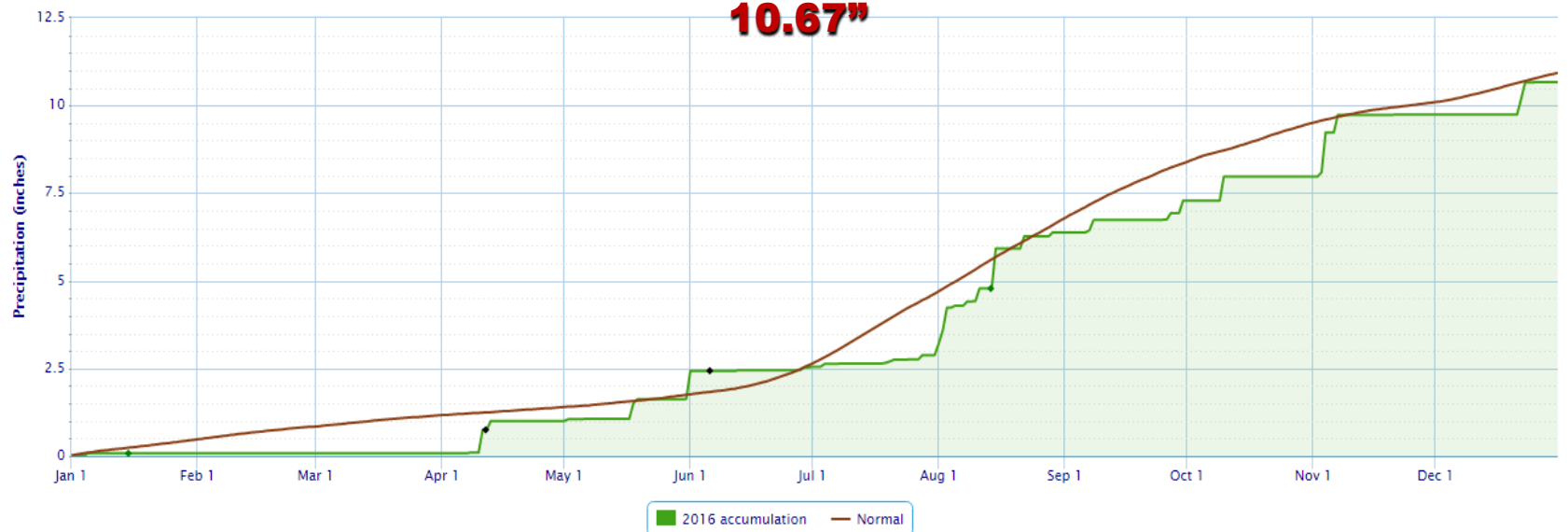
Daily Temperature Data – TRUTH OR CONSEQUENCE, NM

Period of Record – Max temperature: 1982-04-01 to 2017-01-02; Min temperature: 1982-06-01 to 2017-01-02. Normals period: 1981-2010. Click and drag to zoom chart.



Accumulated Precipitation – TRUTH OR CONSEQUENCE, NM

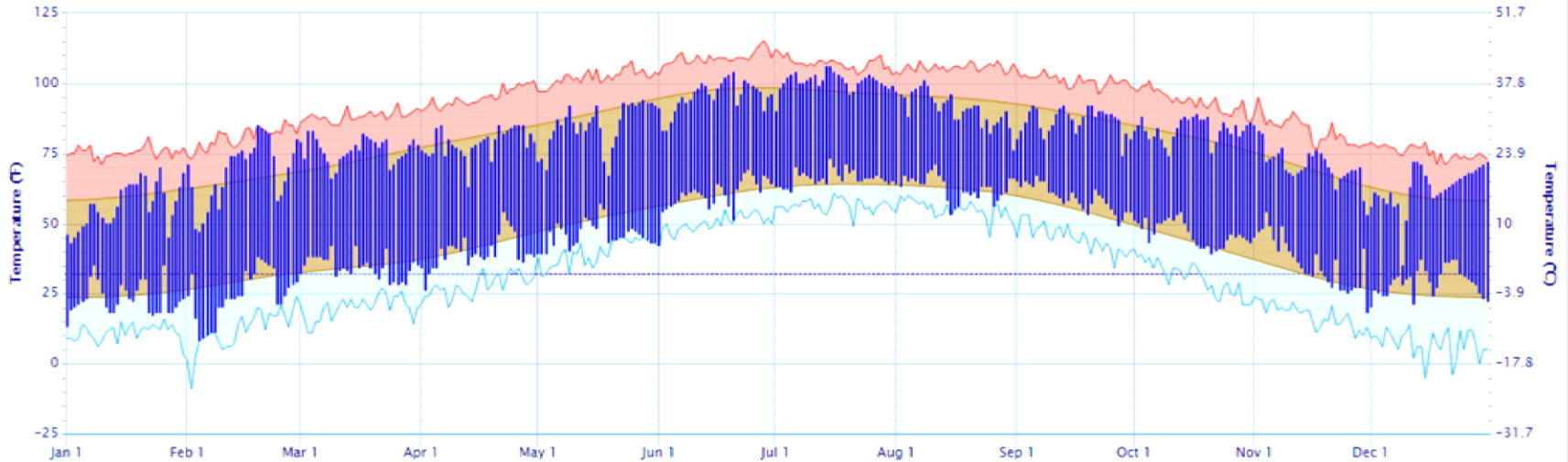
Click and drag to zoom to a shorter time interval; green/black diamonds represent subsequent/missing values



Dell City, TX 2016

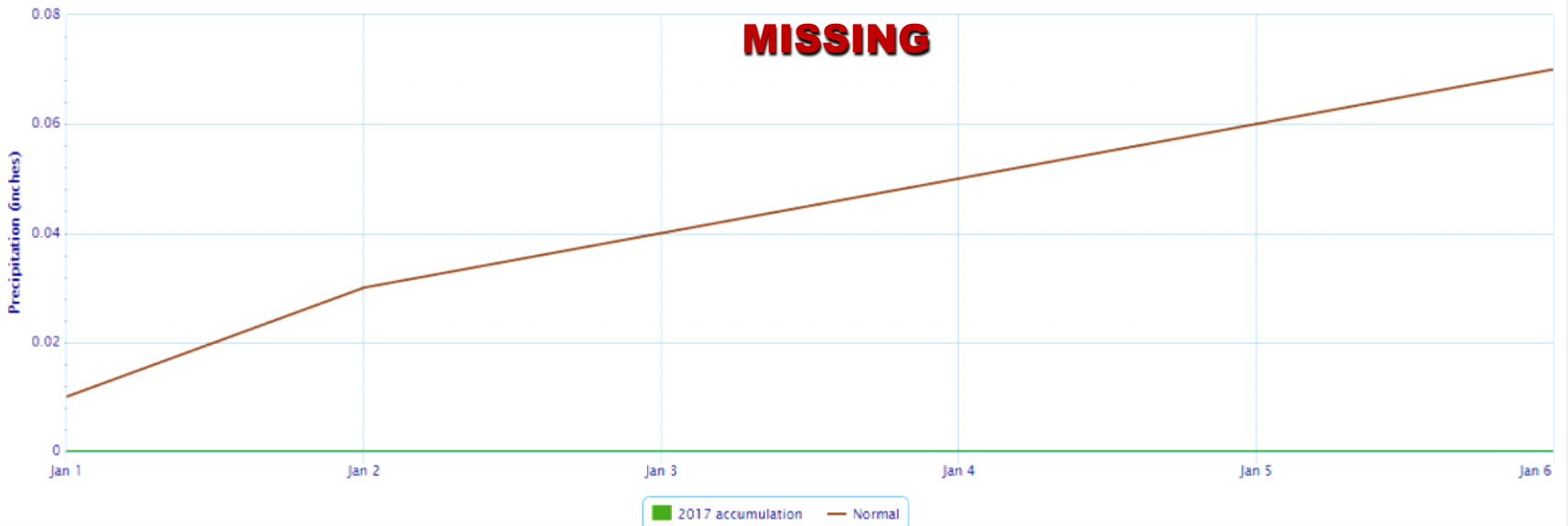
Daily Temperature Data - DELL CITY 5 SSW, TX

Period of Record - 1979-07-03 to 2017-01-06. Normals period: 1981-2010. Click and drag to zoom chart.



Accumulated Precipitation - DELL CITY 5 SSW, TX

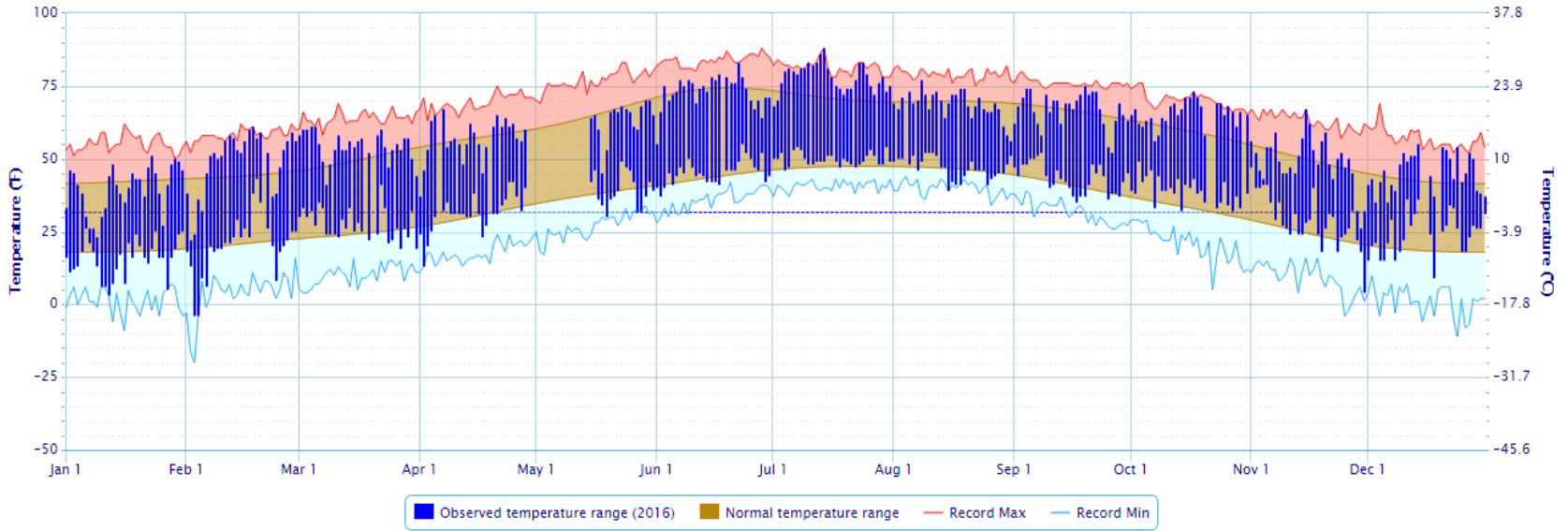
Click and drag to zoom to a shorter time interval; green/black diamonds represent subsequent/missing values



Cloudcroft, NM 2016

Daily Temperature Data - CLOUDCROFT, NM

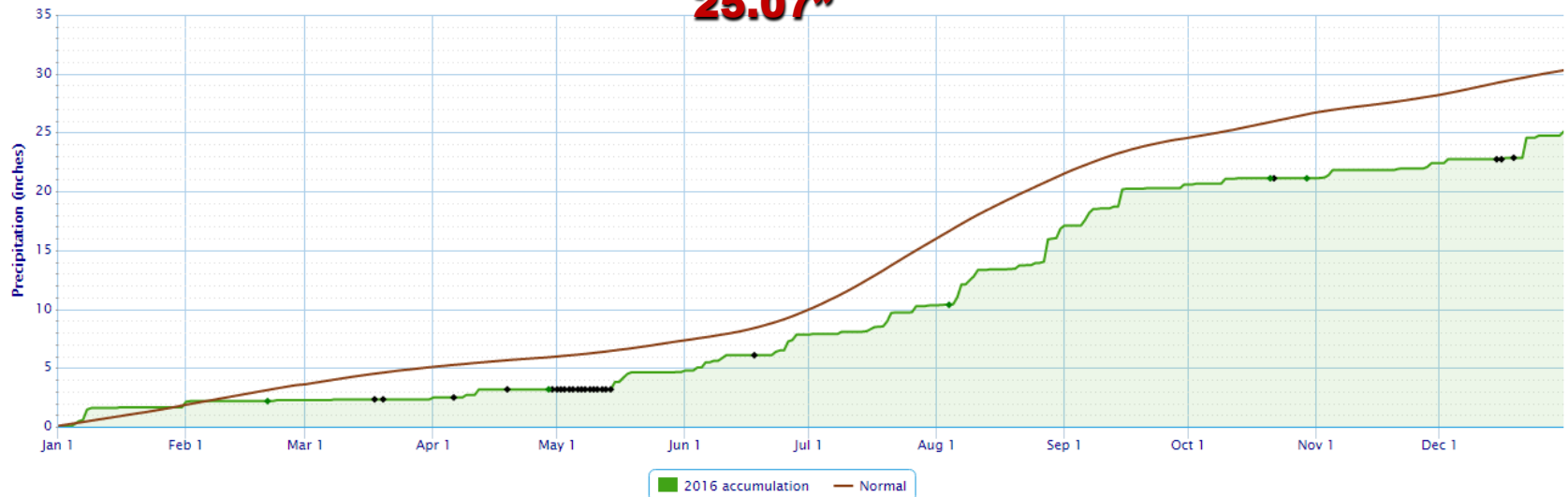
Period of Record - 1987-09-01 to 2017-01-02. Normals period: 1981-2010. Click and drag to zoom chart.



Accumulated Precipitation - CLOUDCROFT, NM

Click and drag to zoom to a shorter time interval. green (black diamonds) represent subsequent/missing values

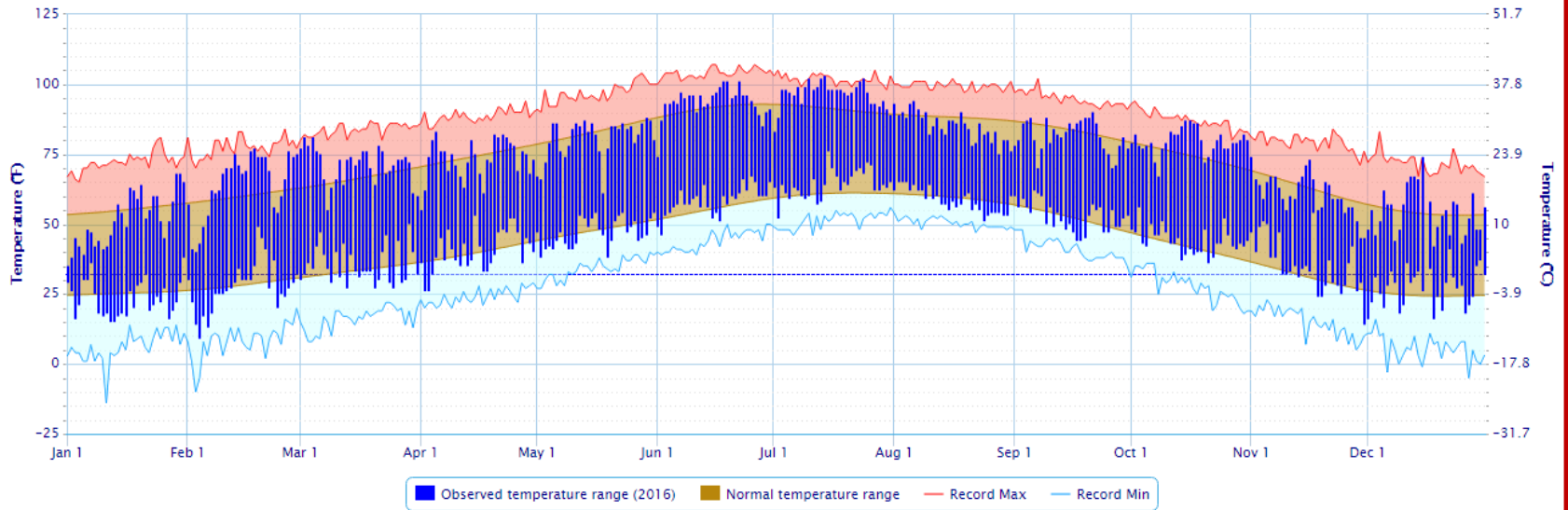
25.07"



Hillsboro, NM 2016

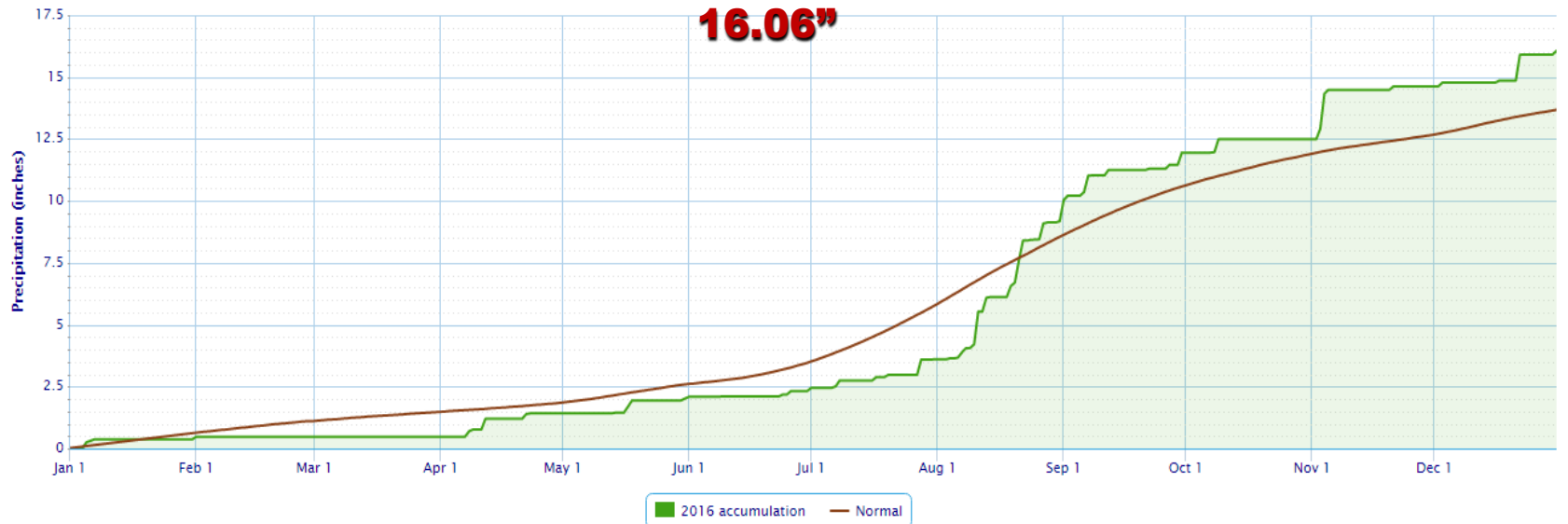
Daily Temperature Data - HILLSBORO, NM

Period of Record - 1893-01-01 to 2017-01-02. Normals period: 1981-2010. Click and drag to zoom chart.



Accumulated Precipitation - HILLSBORO, NM

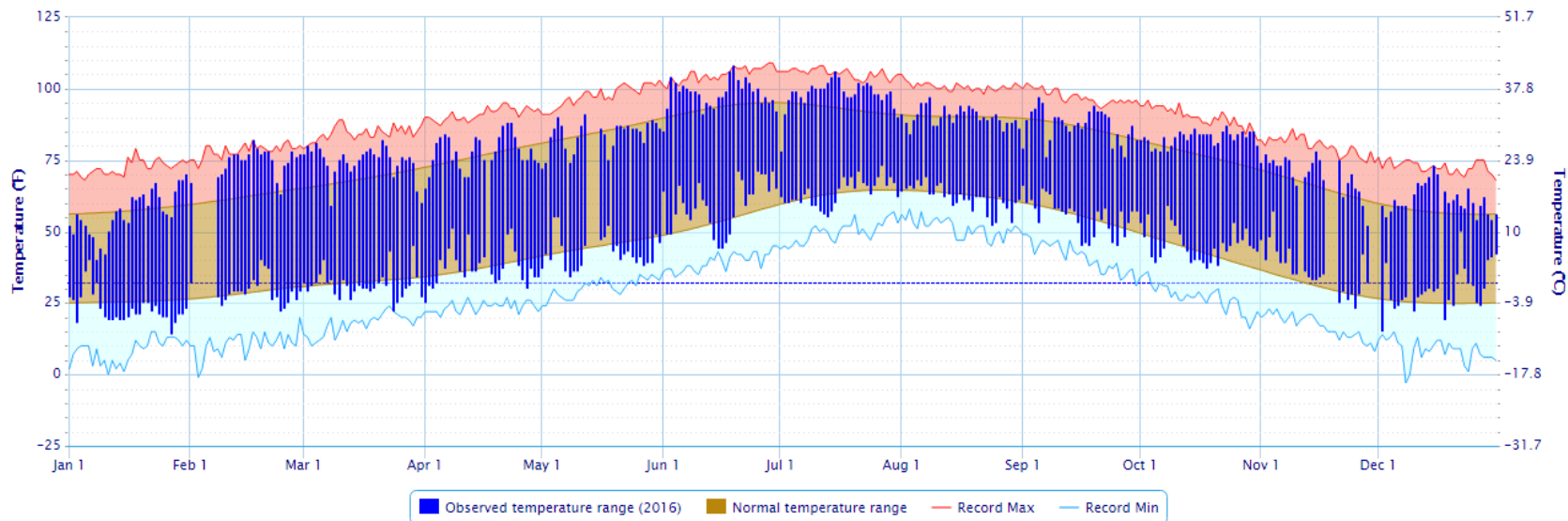
Click and drag to zoom to a shorter time interval; green/black diamonds represent subsequent/missing values



Redrock, NM 2016

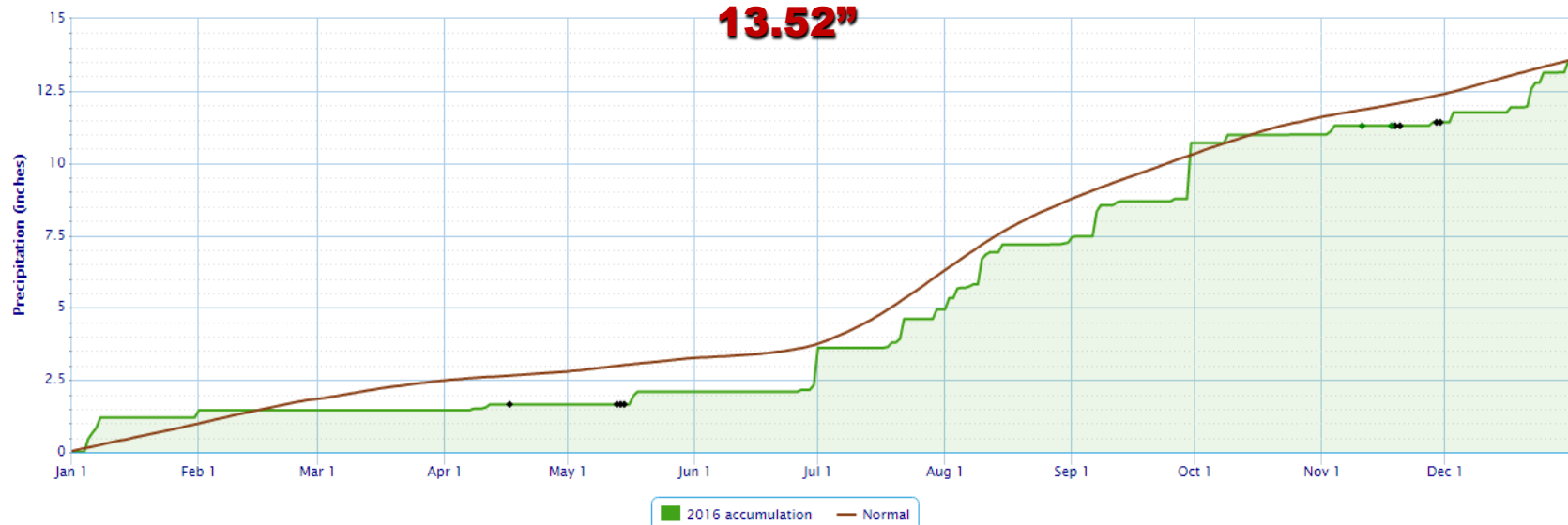
Daily Temperature Data - REDROCK 1 NNE, NM

Period of Record - 1958-02-01 to 2017-01-02. Normals period: 1981-2010. Click and drag to zoom chart.



Accumulated Precipitation - REDROCK 1 NNE, NM

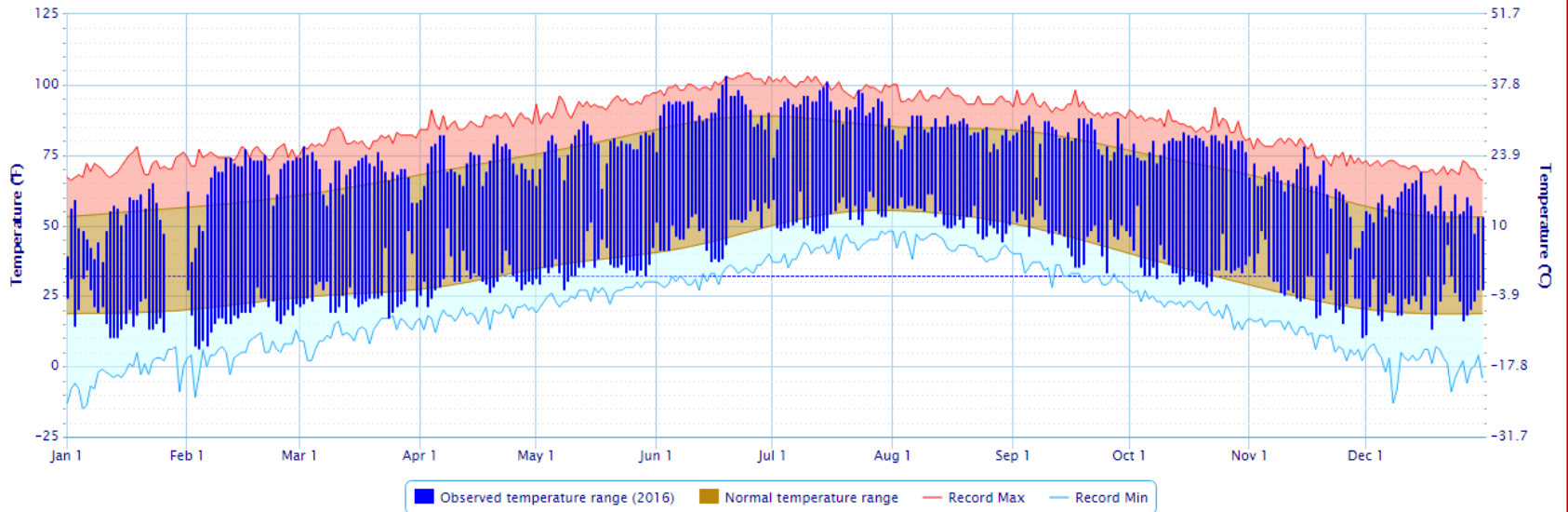
Click and drag to zoom to a shorter time interval; green/black diamonds represent subsequent/missing values



Gila Hot Springs, NM 2016

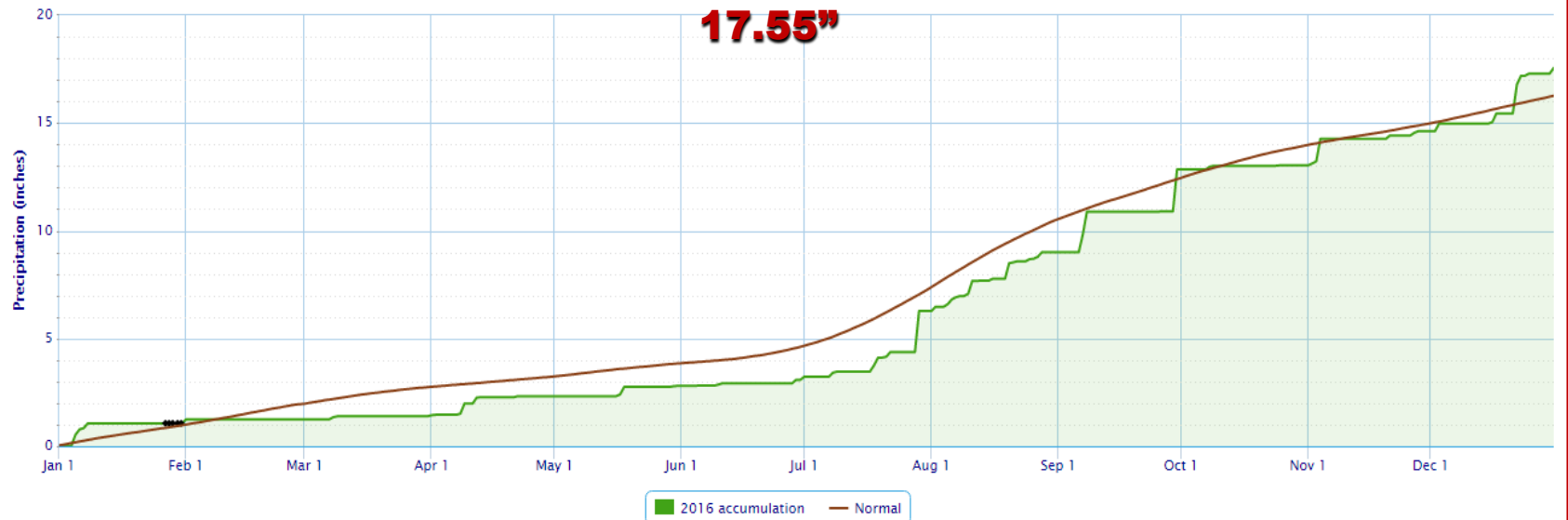
Daily Temperature Data – GILA HOT SPRINGS, NM

Period of Record – 1957-05-24 to 2017-01-02. Normals period: 1981-2010. Click and drag to zoom chart.



Accumulated Precipitation – GILA HOT SPRINGS, NM

Click and drag to zoom to a shorter time interval; green/black diamonds represent subsequent/missing values

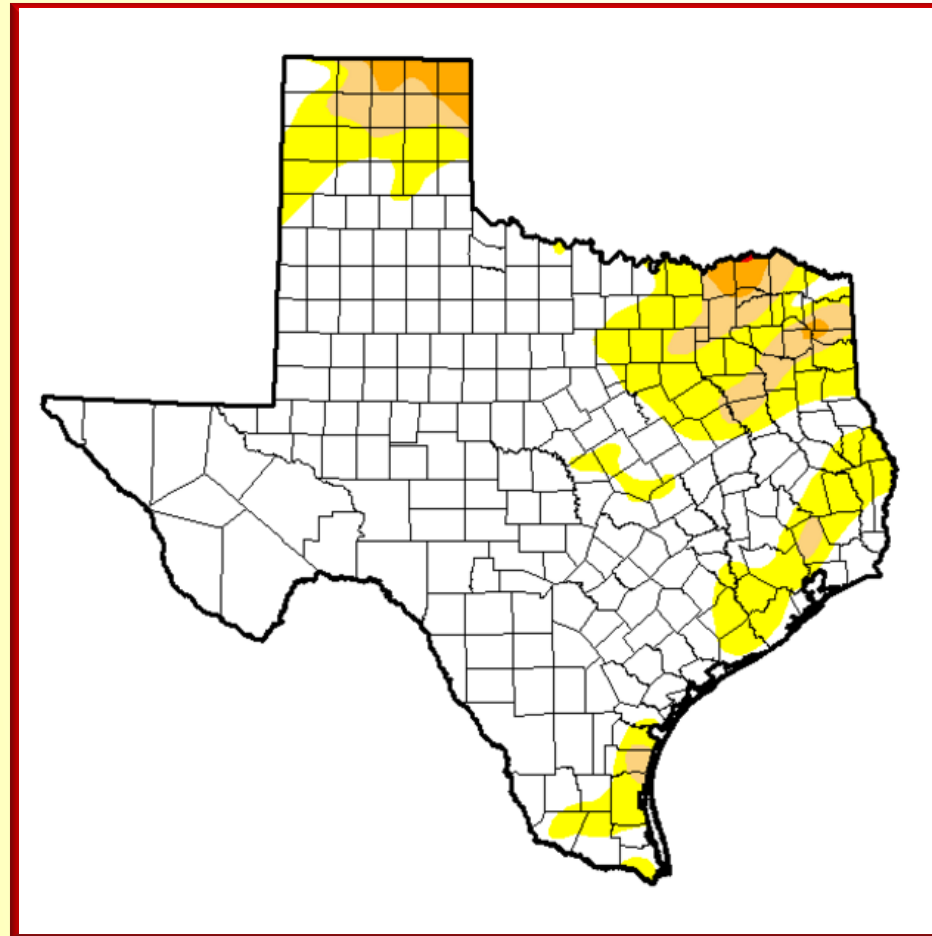
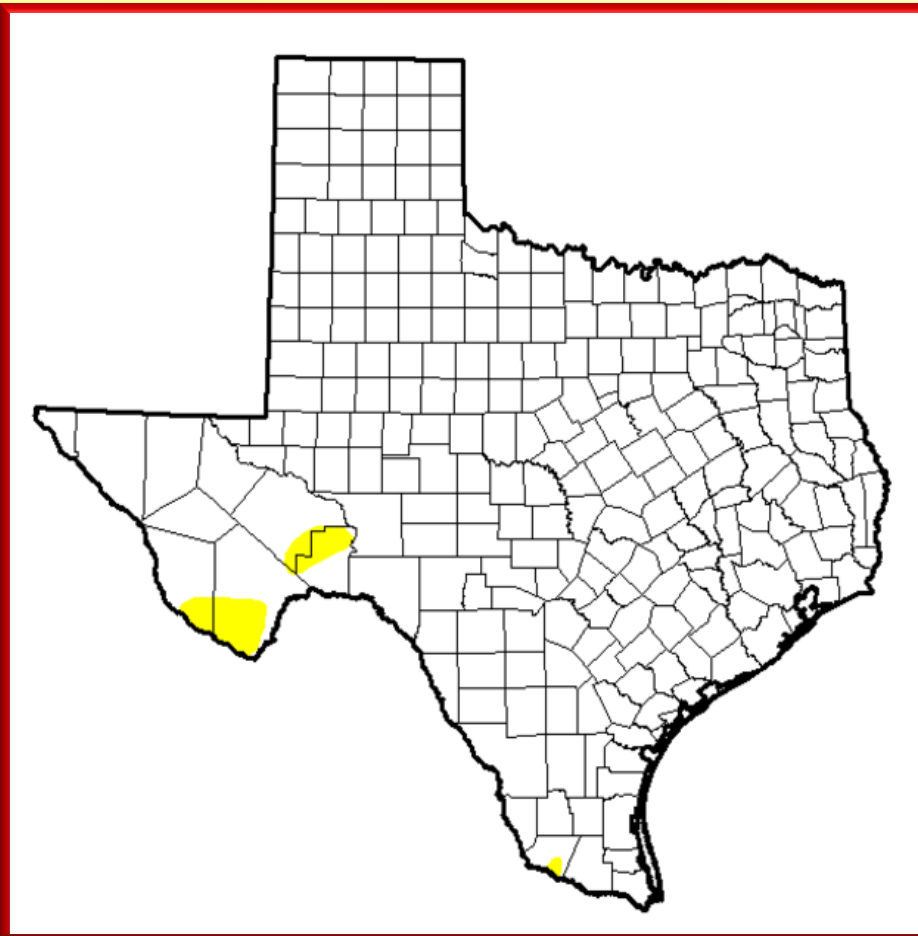


Beginning and end of year drought conditions for Texas

- Abnormally Dry – D0
- Moderate Drought – D1
- Severe Drought – D2
- Extreme Drought – D3
- Exceptional – D4

January 5, 2016

December 27, 2016

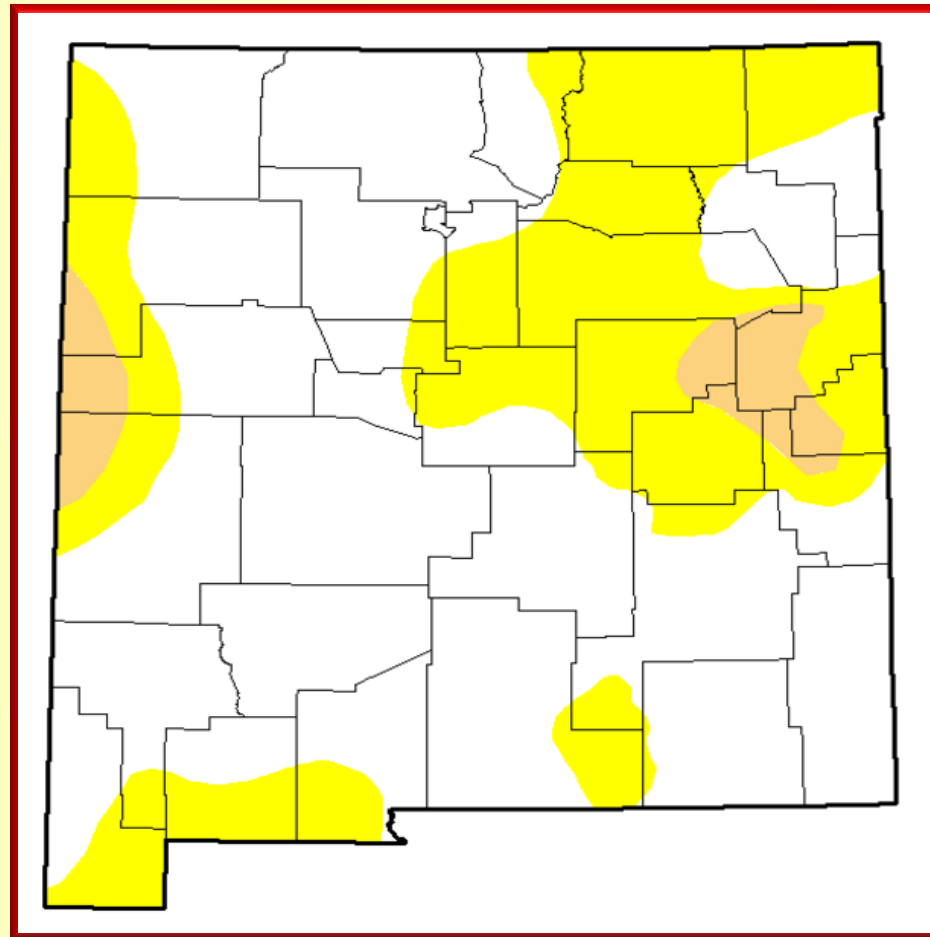
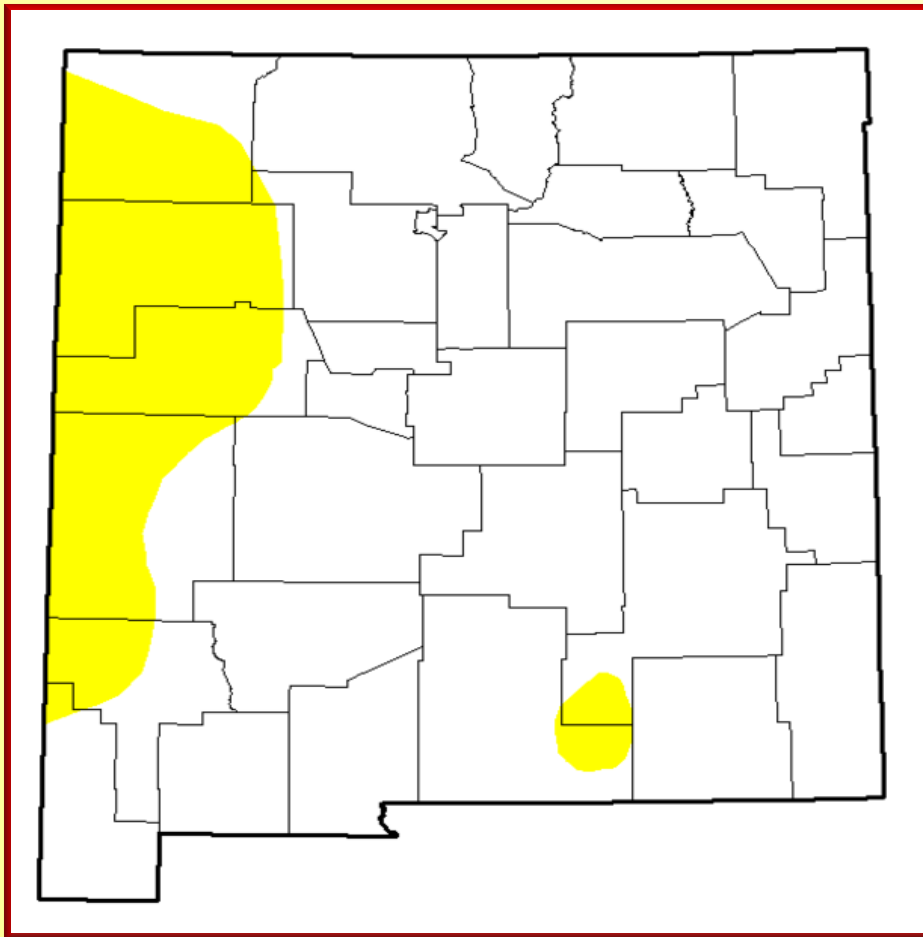


Beginning and end of year drought conditions for New Mexico

- Abnormally Dry – D0
- Moderate Drought – D1
- Severe Drought – D2
- Extreme Drought – D3
- Exceptional – D4

January 5, 2016

December 27, 2016



El Paso Weather Highlights 2016

Highest Temperature	108 on June 18 and July 14
Lowest Temperature	21 on Feb 26
Greatest Daily Precipitation	1.53" on Aug 21
Greatest Daily Snowfall	Trace on several days
Wettest Month	August – 4.76"
Driest Month	October – 0.00"
Highest Peak Wind	64 mph on Jul 15
Last Freeze-Spring	Feb 11
First Freeze-Fall	Nov 30
Heating Degree Days (Normal)	1851 (2474)
Cooling Degree Days (Normal)	2811 (2331)

El Paso Weather Highlights - All Time

Highest Temperature	114 on June 30, 1994
Lowest Temperature	-8 on January 11, 1962
Greatest Daily Precipitation	6.50" on July 9, 1881
Greatest Daily Snowfall	14.5 on Dec 13, 1987
Wettest Month	8.18" July 1881
Driest Month	0.00" Numerous months
Highest Peak Wind	84 mph on March 26, 2010
Latest Last Freeze-Spring	May 2, 1967
Earliest Last Freeze-Spring	January 28, 1925
Latest First Freeze-Fall	December 20, 1939
Earliest First Freeze-Fall	October 16, 1880
Season Heating Degree Days	3256 in 1976-1977
Annual Cooling Degree Days	3141 in 2011

El Paso Summer Heat

Consecutive Days at or Above 100 Deg

Rank	Number of Days	Ending Date
1	23	July 15, 1994
2	21	June 30, 1980
3	16	July 18, 2016
4	14	June 18, 1994
4	14	August 6, 1980
4	14	June 27, 1978
7	12	July 8 , 2005
7	12	June 30, 1998
9	11	June 29, 2013
9	11	July 1, 1979
9	11	June 24, 1960

El Paso Summer Heat

Consecutive Days at or Above 90 Deg

Rank	Number of Days	Ending Date
1	106	September 9, 2015
2	80	September 12, 1983
3	79	August 14, 1994
3	79	August 10, 1980
5	66	September 9, 1982
6	65	July 28, 2011
7	63	July 28 2014
8	61	August 23, 2009
9	57	July 23, 1956
10	56	July 22, 1977

El Paso Winter Cold

Consecutive Days with Lows at or Below 30 Deg

Rank	Number of Days	Ending Date
1	20	January 21, 1944
2	17	December 27, 1985
3	15	December 29, 1960
3	15	January 26, 1898
5	14	January 15, 1986
5	14	January 14, 1925
7	13	February 13, 2011
7	13	December 9, 1976
7	13	January 23, 1975
7	13	January 9, 1970
7	13	January 18, 1961
7	13	January 27, 1940

El Paso Winter Cold

Consecutive Days with Lows at or Below 20 Deg

Rank	Number of Days	Ending Date
1	6	December 19, 1985
1	6	January 9, 1971
1	6	January 13, 1967
1	6	January 25, 1963
1	6	January 17, 1963
6	5	February 5, 2011
6	5	December 20, 1996
6	5	January 13, 1962
6	5	December 27, 1953
6	5	February 3, 1951
6	5	January 31, 1948
6	5	January 10, 1913

El Paso Drought-Consecutive Days with No Measureable Rain (Trace or less)

Rank	Number of Days	Ending Date
1	136	June 22, 1910
2	128	June 13, 2002
3	126	June 29, 1896
4	119	June 1, 2011
5	101	January 24, 2006
5	101	June 7, 1902
5	101	July 15, 1892
8	99	May 22, 1963
9	98	March 2, 1964
10	93	May 3, 1972

El Paso Drought-Consecutive Days with No Rain

Rank	Number of Days	Ending Date
1	118	May 31, 2011
2	109	May 25, 2002
3	88	December 31, 1950
4	80	May 9, 1904
5	72	December 10, 1903
6	69	May 8, 1902
7	68	June 12 1996
8	64	July 4, 1916
9	63	December 9, 1954
10	58	December 15, 2005

Yearly average temperature at El Paso: 1895-2016

El Paso, Texas, Average Temperature, January-December

1901-2000 Mean: 64.6°F Avg Temperature

