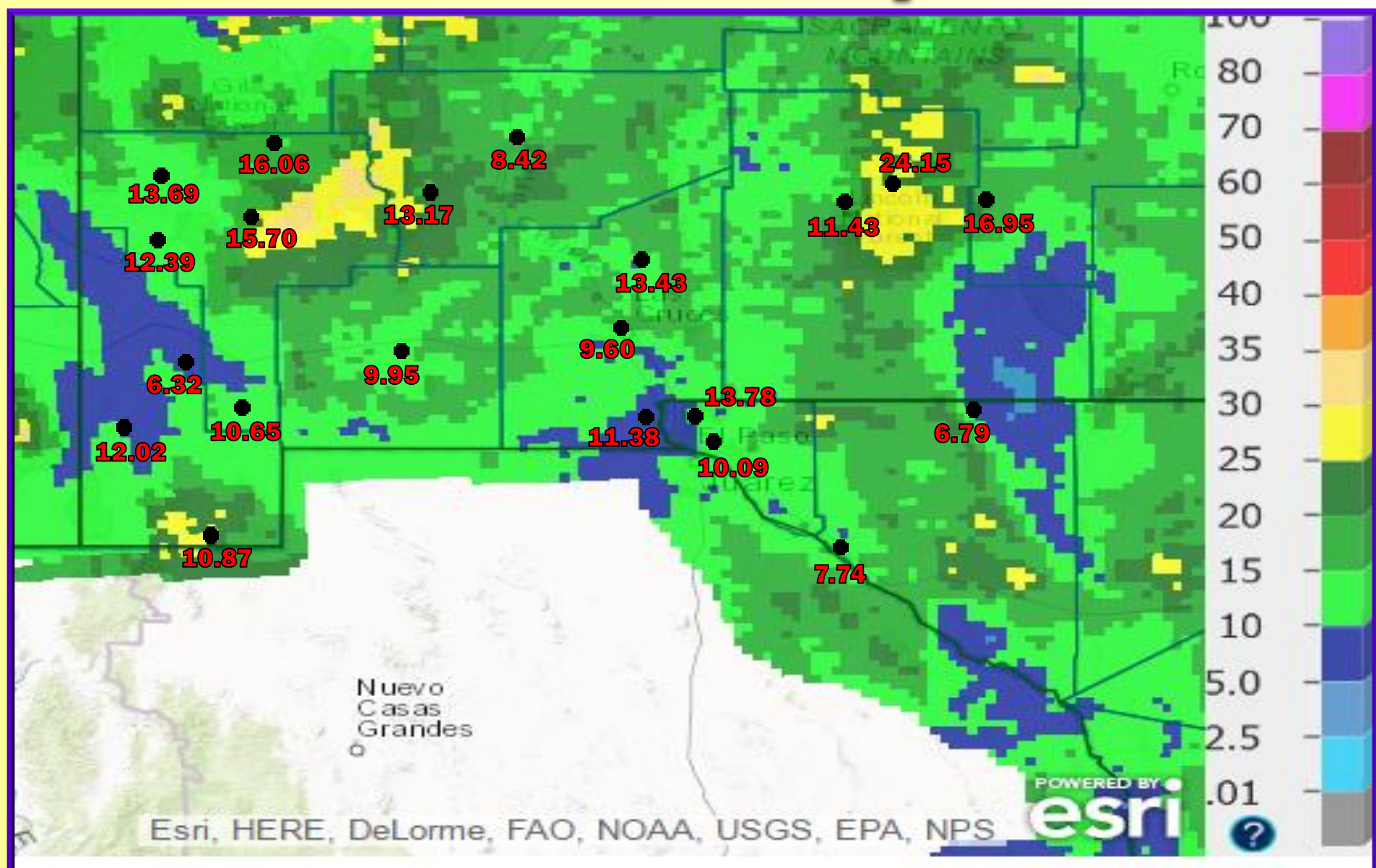


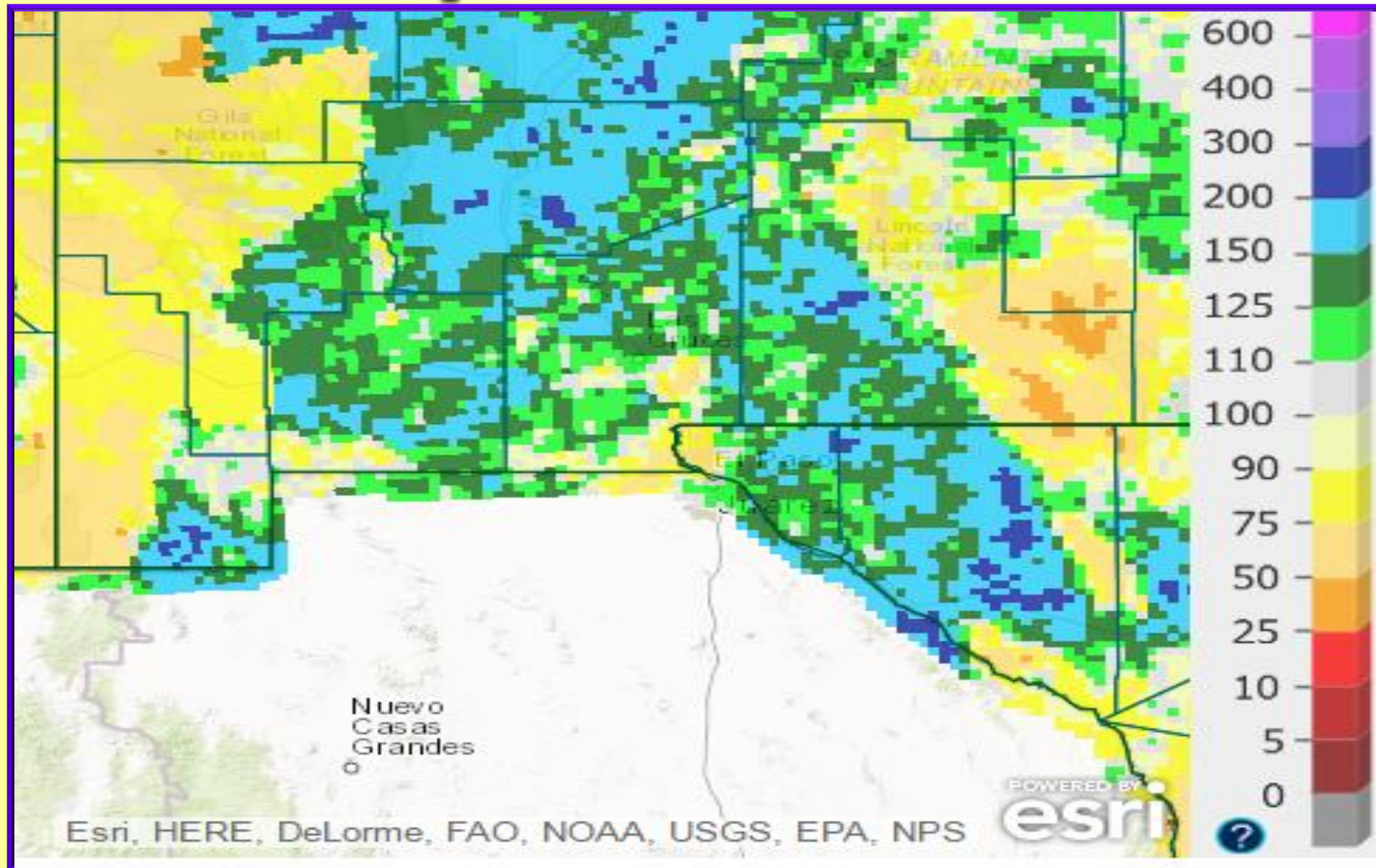
# 2017 in Review

- Rainfall data**
- Selected cities temp/precip data**
- Drought Data**
- El Paso statistics**

# 2017 radar rainfall estimate with surface rainfall reports



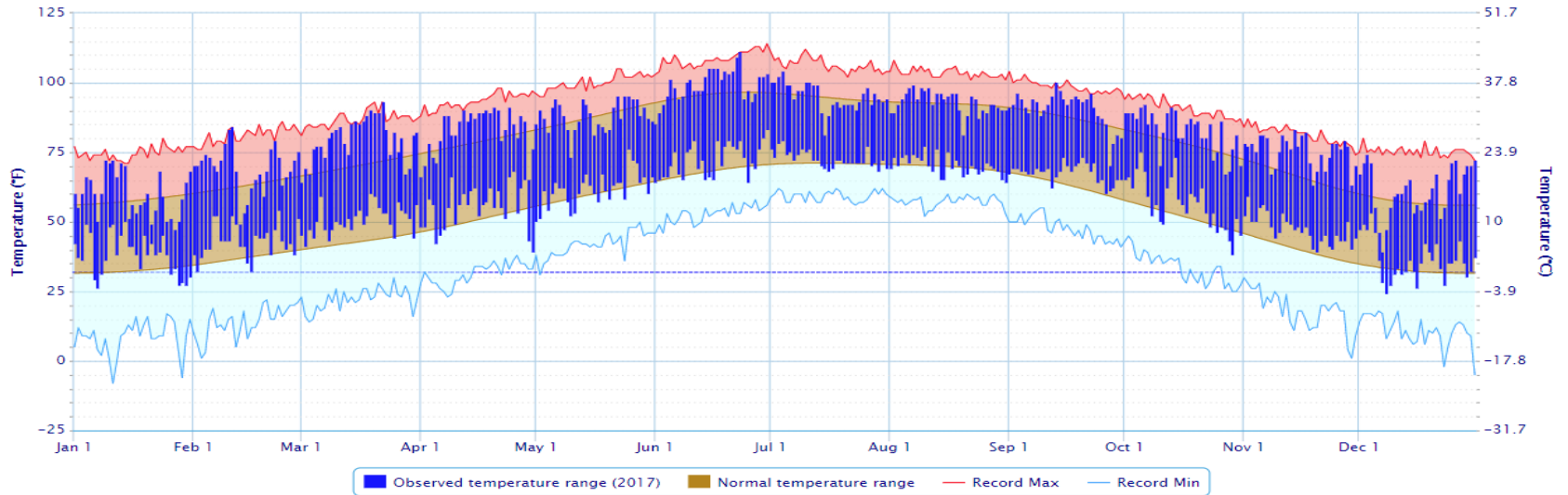
# 2017 radar rainfall estimate percent of normal



# El Paso, TX 2017

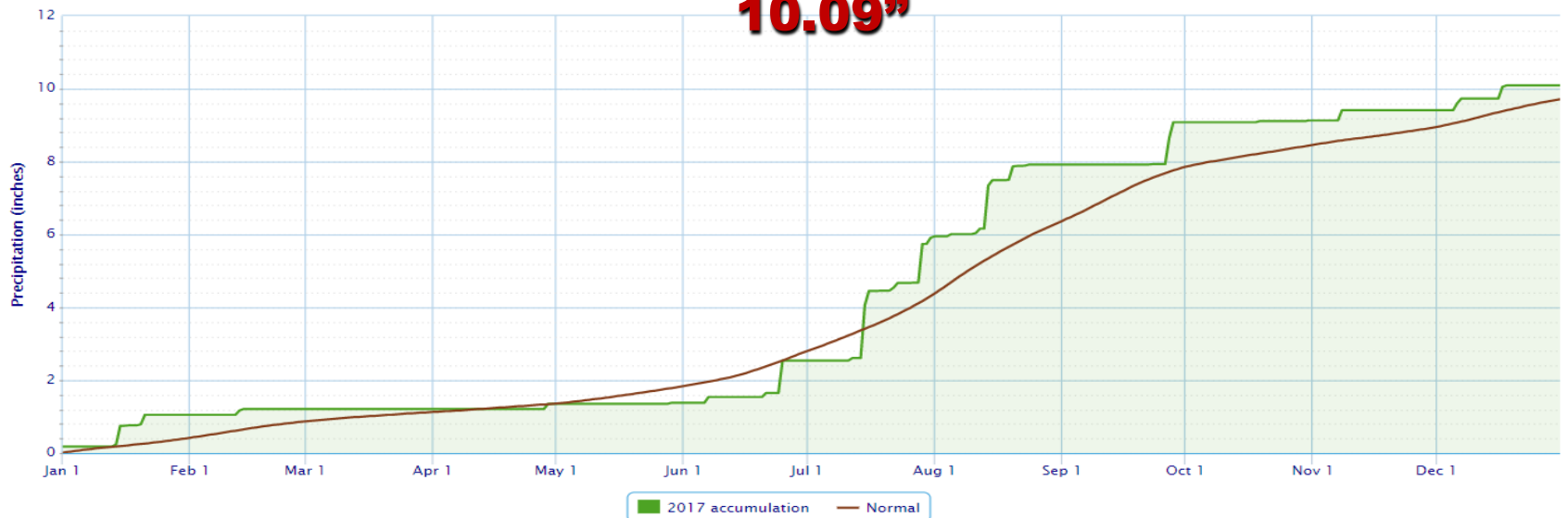
## Daily Temperature Data – El Paso Area, TX (ThreadEx)

Period of Record – Max temperature: 1887-01-01 to 2017-12-31; Min temperature: 1879-01-01 to 2017-12-31. Normals period: 1981-2010. Click and drag to zoom chart.



## Accumulated Precipitation – El Paso Area, TX (ThreadEx)

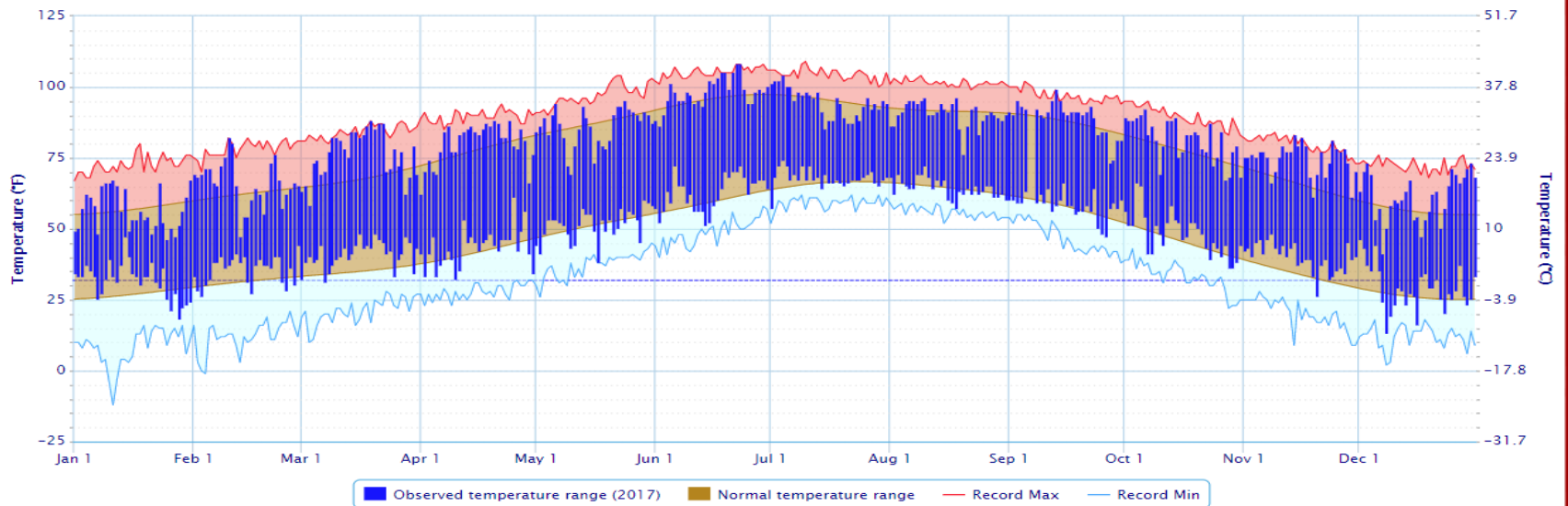
Click and drag to zoom to a shorter time interval; green/black diamonds represent subsequent/missing values



# Deming, NM 2017

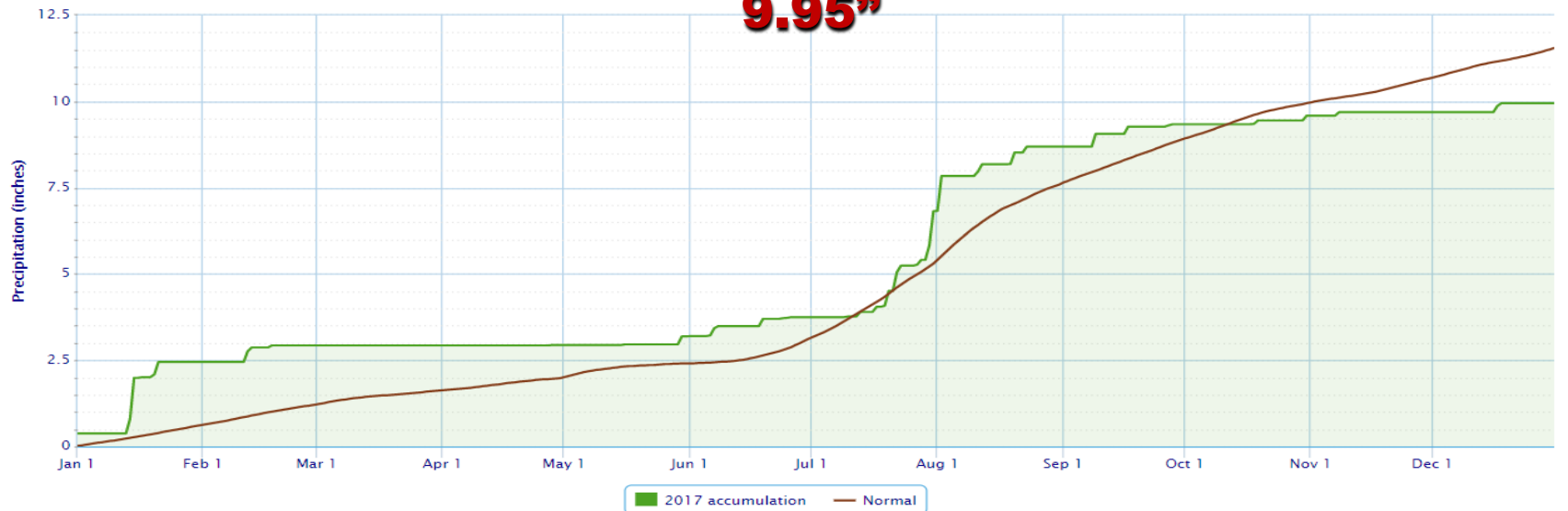
## Daily Temperature Data – DEMING MUNICIPAL AP, NM

Period of Record – Max temperature: 1961-04-07 to 2017-12-31; Min temperature: 1961-04-08 to 2017-12-31. Normals period: 1981-2010. Click and drag to zoom chart.

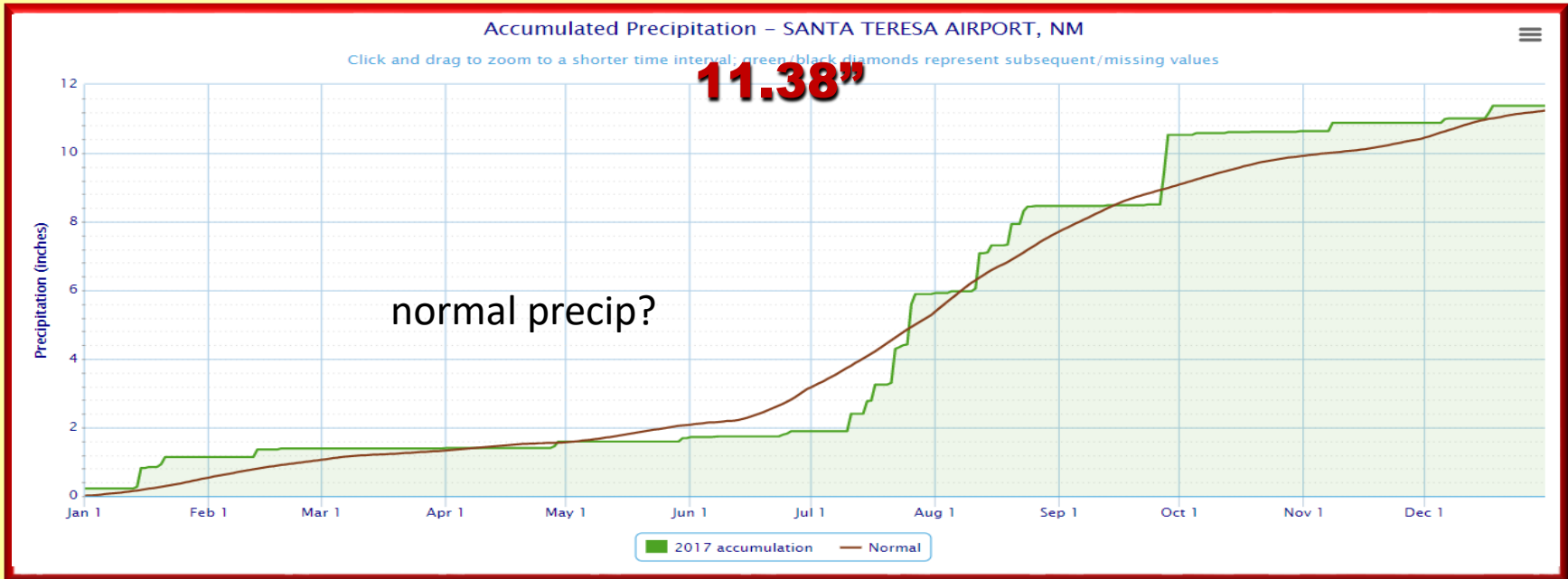
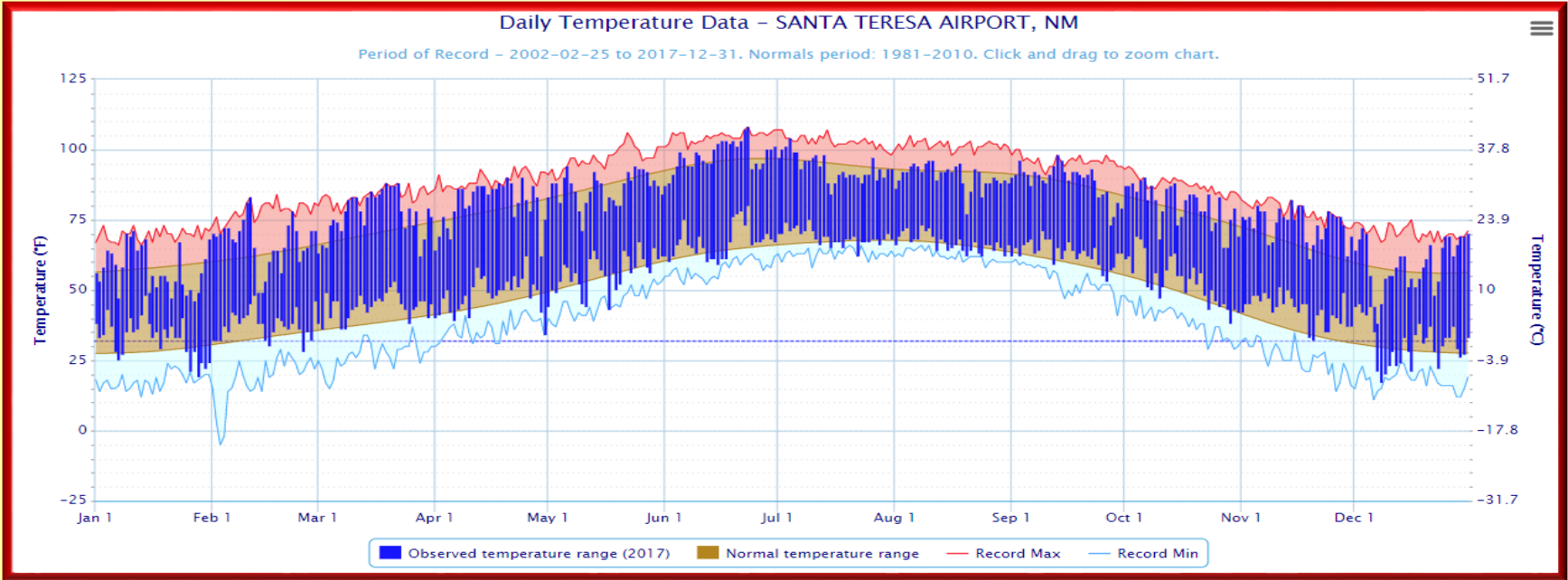


## Accumulated Precipitation – DEMING MUNICIPAL AP, NM

Click and drag to zoom to a shorter time interval; green/black diamonds represent subsequent/missing values



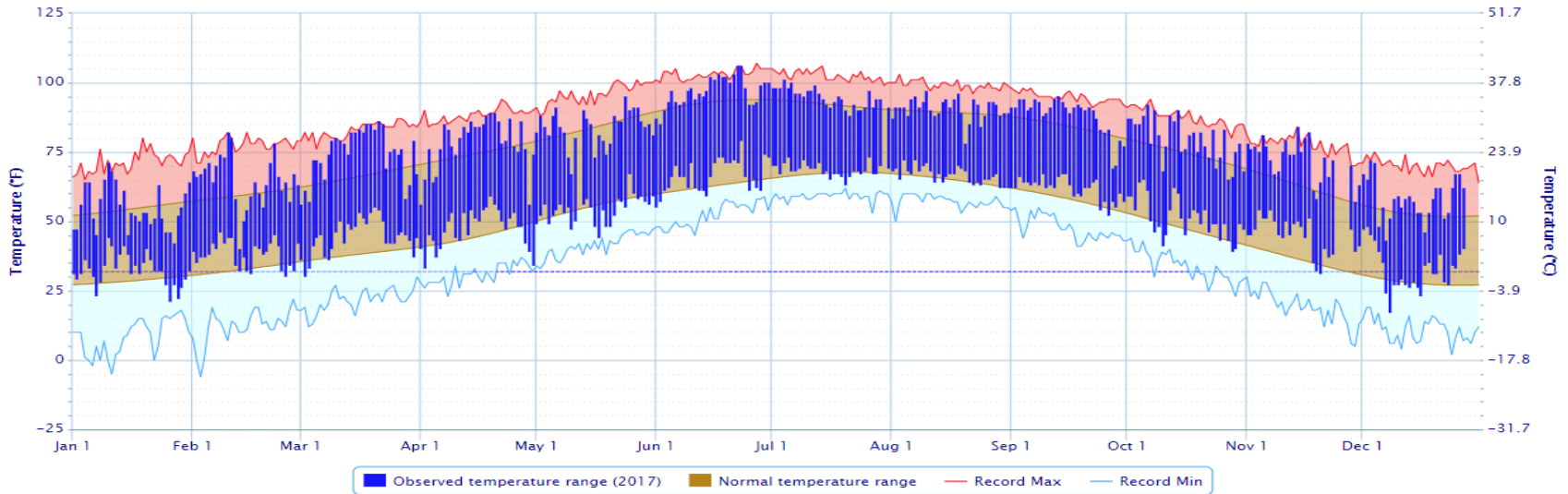
# Santa Teresa, NM 2017



# Truth Or Consequences, NM 2017

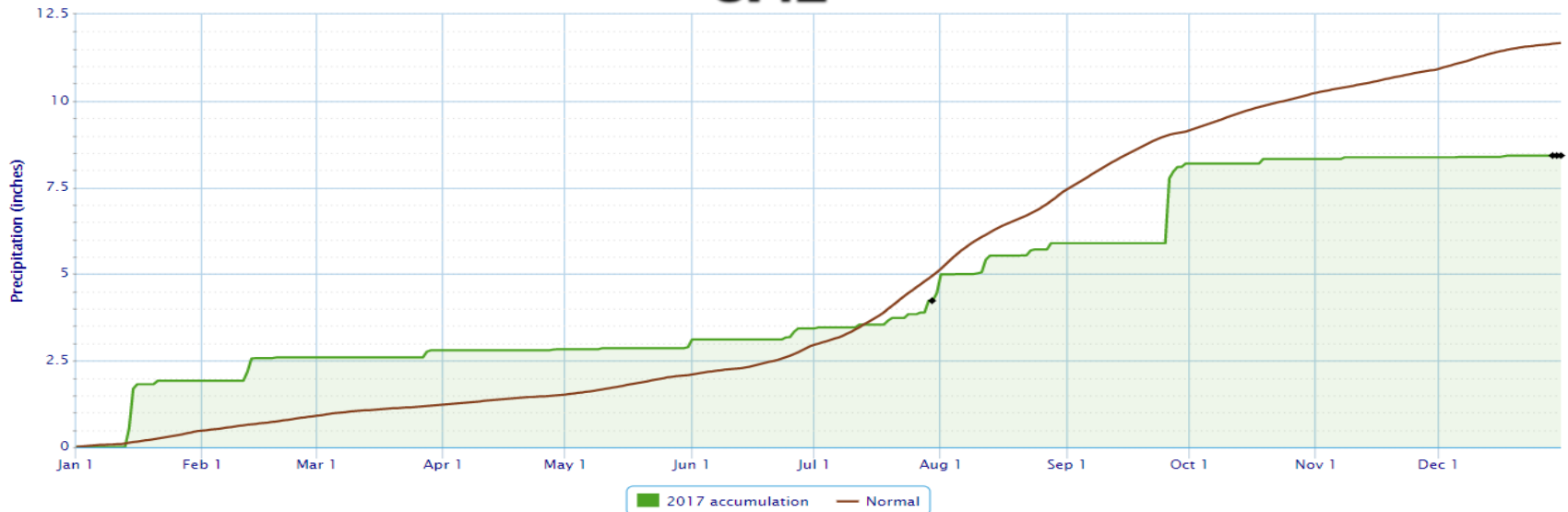
## Daily Temperature Data – TRUTH OR CONSEQUENCES MUNICIPAL AP, NM

Period of Record – Max temperature: 1950-05-26 to 2017-12-27; Min temperature: 1950-05-27 to 2017-12-27. Normals period: 1981-2010. Click and drag to zoom chart.

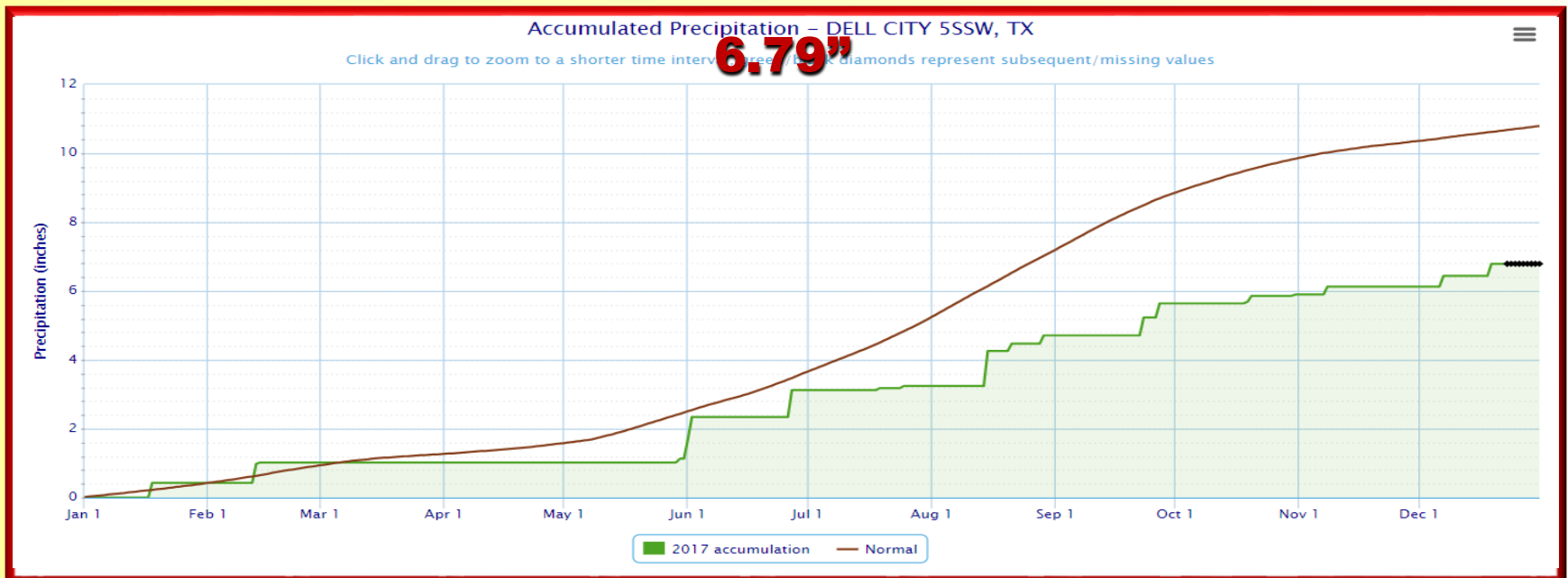
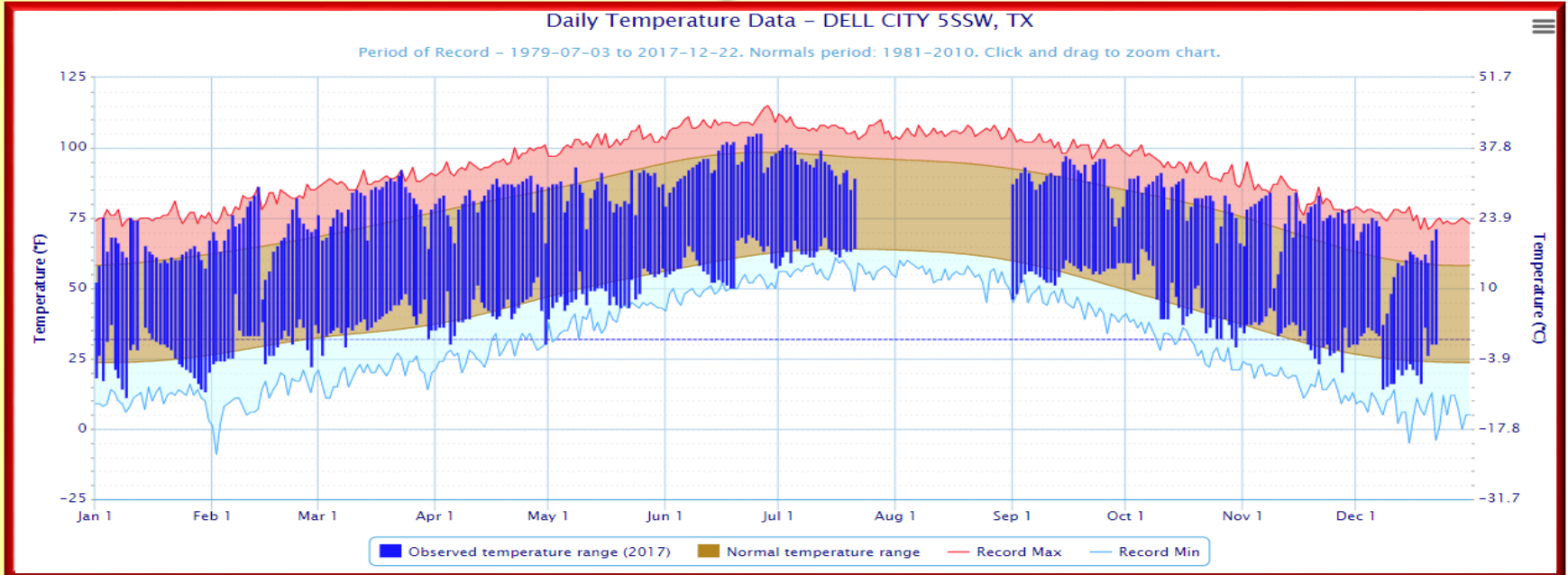


## Accumulated Precipitation – TRUTH OR CONSEQUENCES MUNICIPAL AP, NM

Click and drag to zoom to a shorter time interval. **8.42"** diamonds represent subsequent/missing values



# Dell City, TX 2017

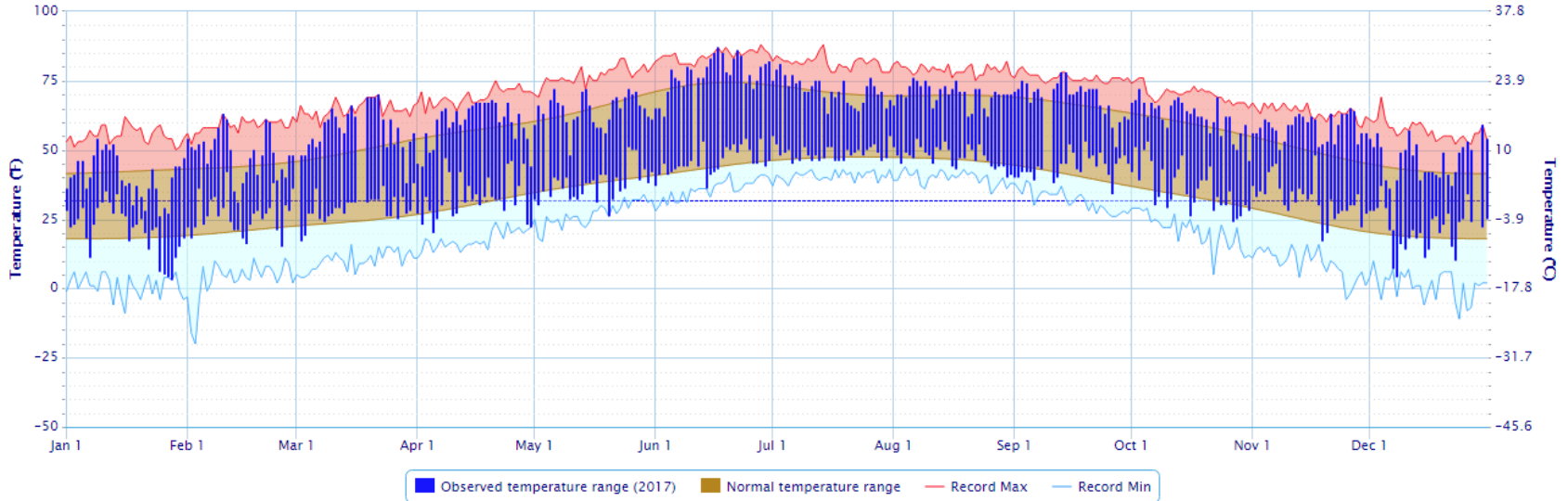




# Cloudcroft, NM 2017

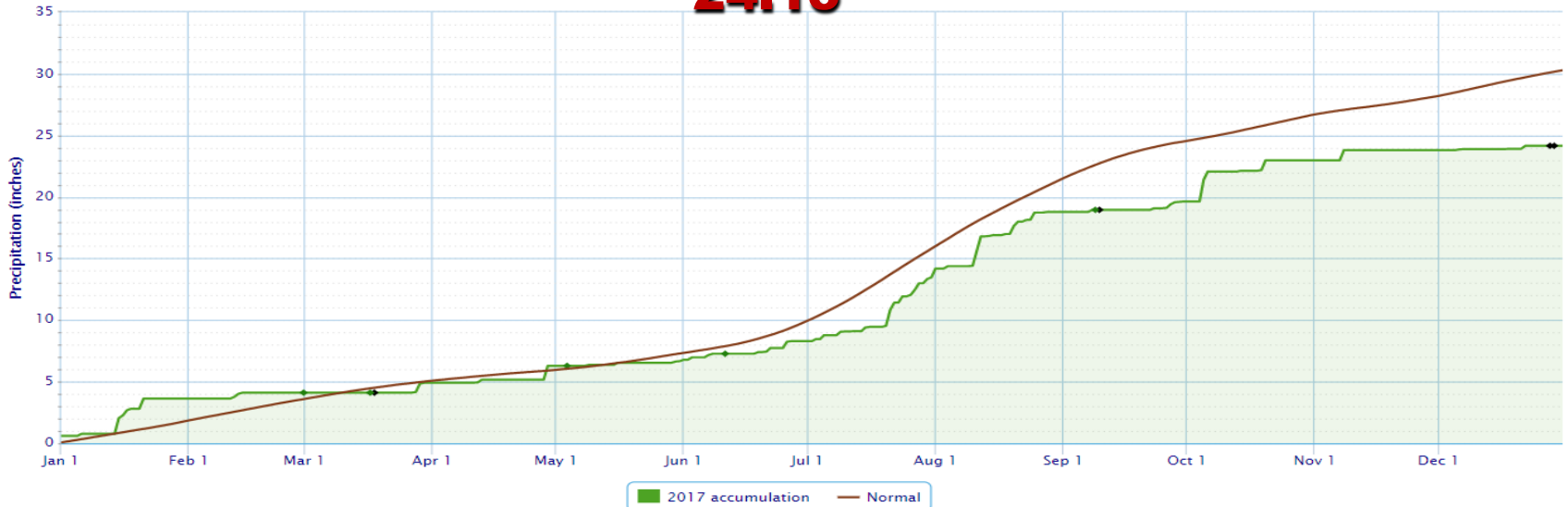
## Daily Temperature Data - CLOUDCROFT, NM

Period of Record - 1987-09-01 to 2018-01-02. Normals period: 1981-2010. Click and drag to zoom chart.

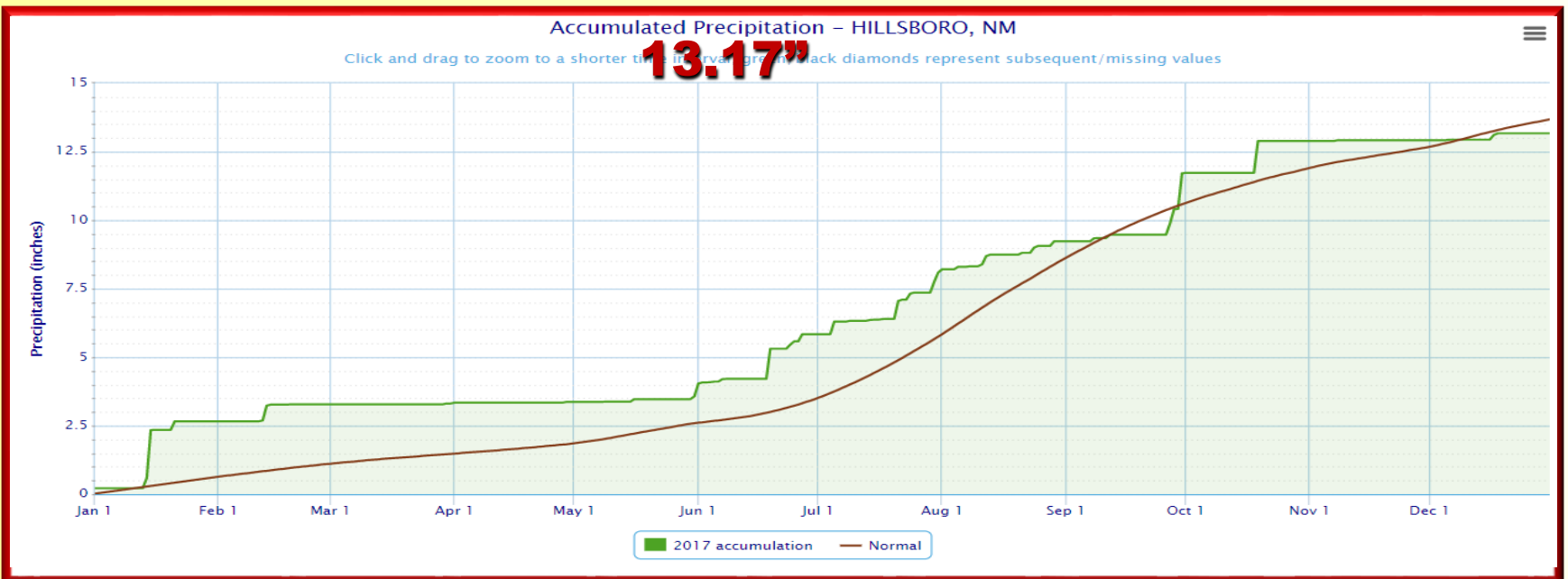
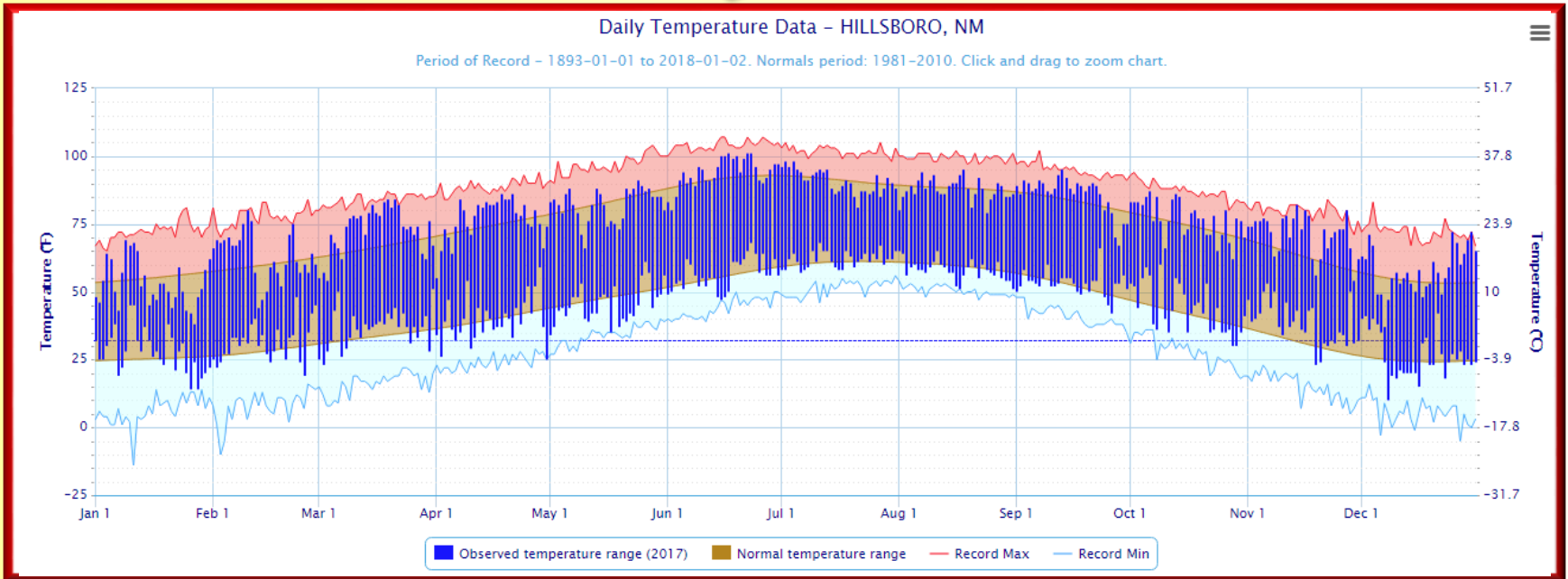


## Accumulated Precipitation - CLOUDCROFT, NM

Click and drag to zoom to a shorter time interval. **24.15"** diamonds represent subsequent/missing values



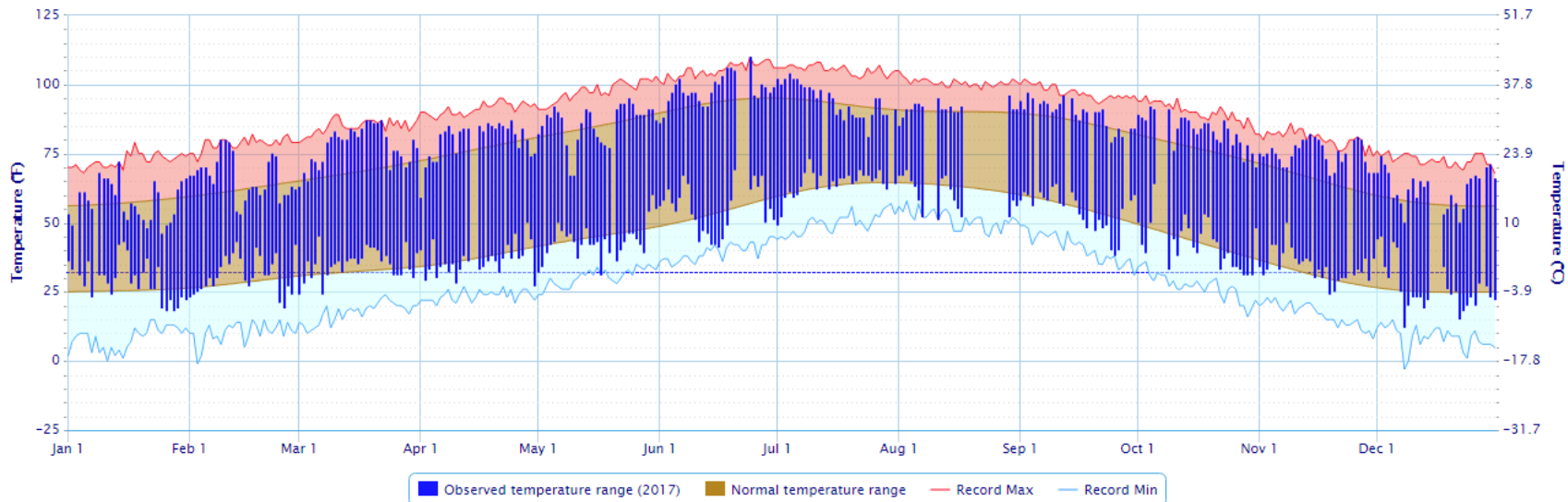
# Hillsboro, NM 2017



# Redrock, NM 2017

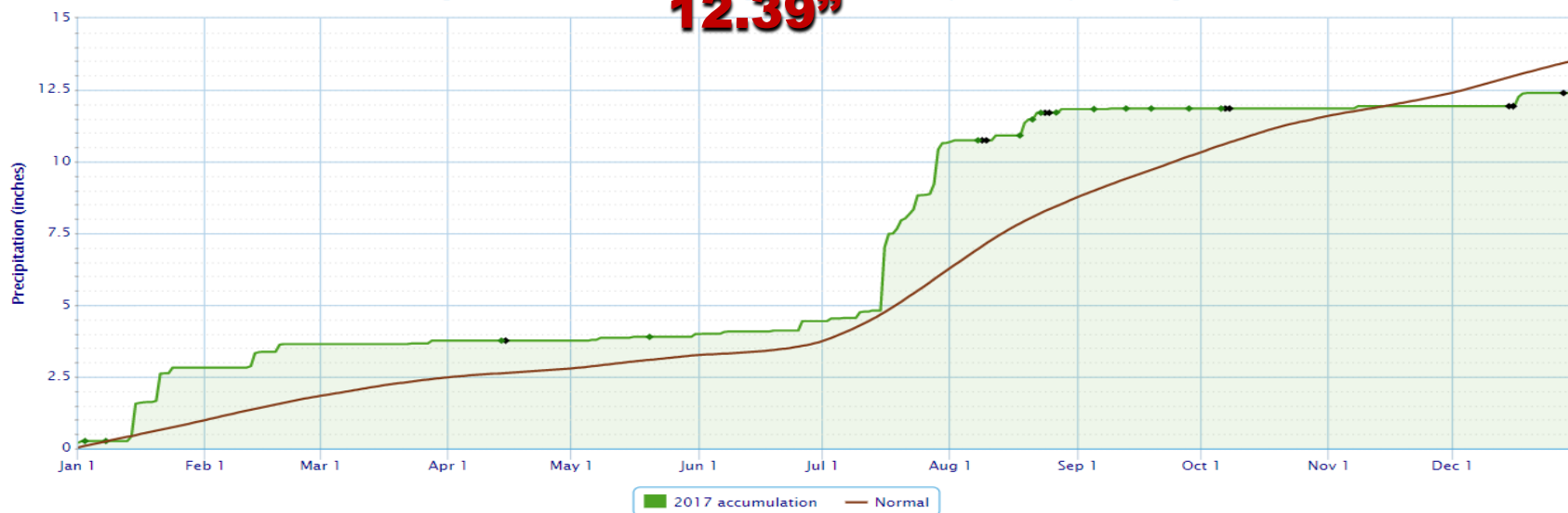
## Daily Temperature Data - REDROCK 1 NNE, NM

Period of Record - 1958-02-01 to 2018-01-02. Normals period: 1981-2010. Click and drag to zoom chart.



## Accumulated Precipitation - REDROCK 1 NNE, NM

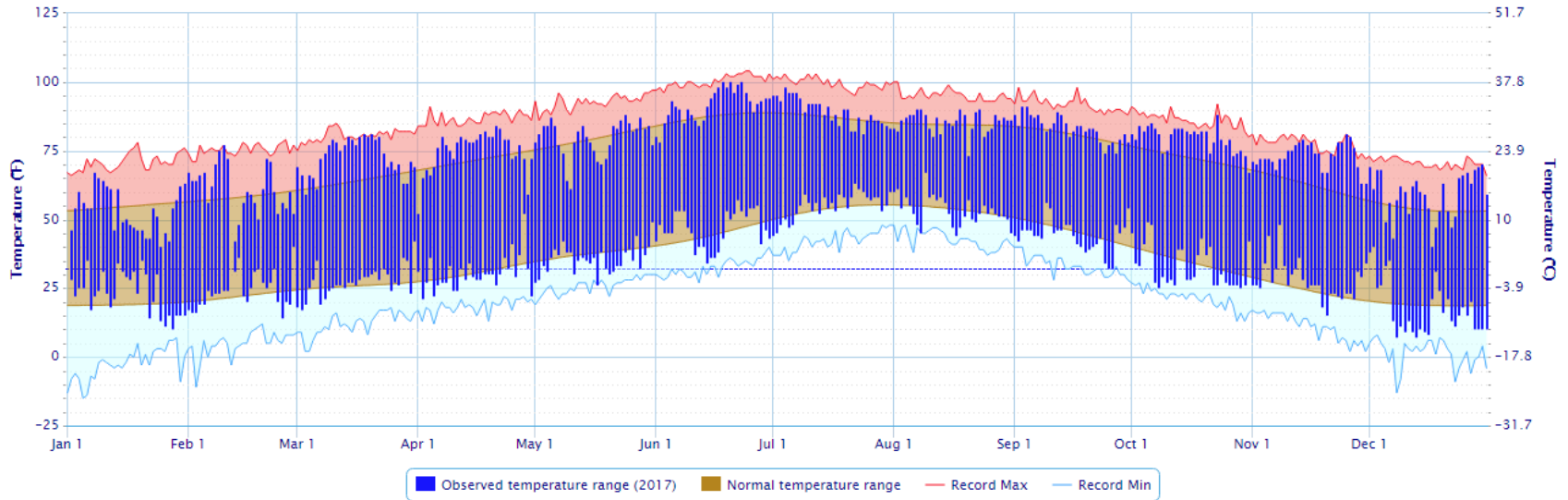
Click and drag to zoom to a shorter time interval; green/black diamonds represent subsequent/missing values



# Gila Hot Springs, NM 2017

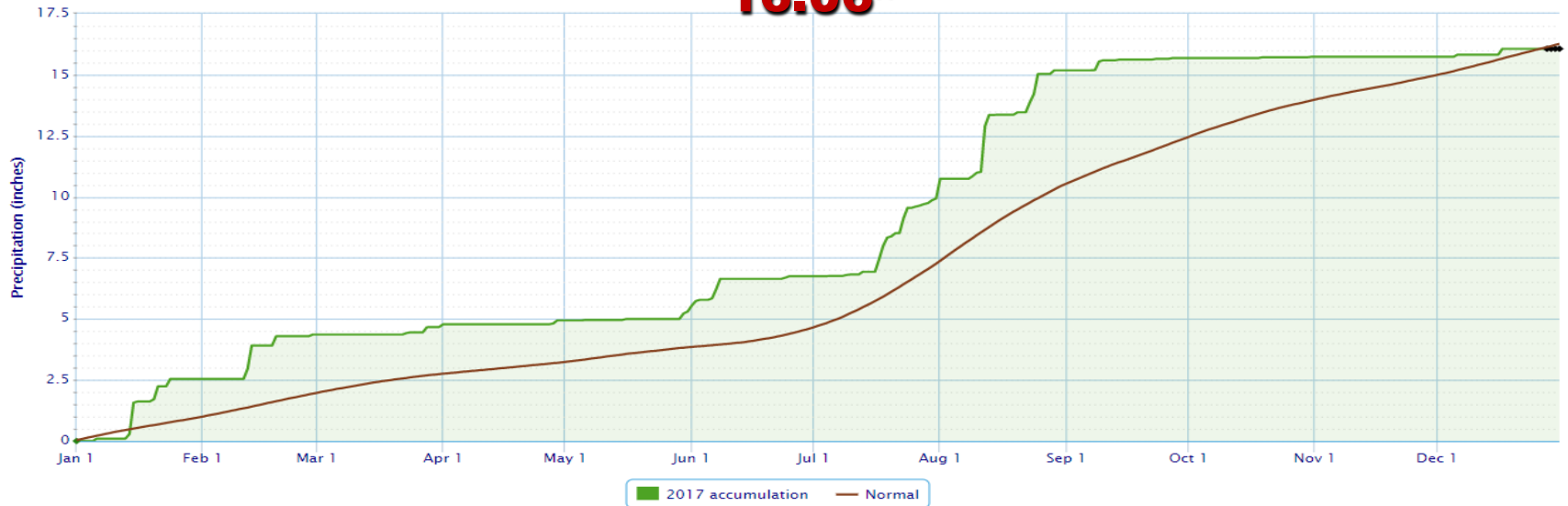
Daily Temperature Data – GILA HOT SPRINGS, NM

Period of Record – 1957-05-24 to 2017-12-31. Normals period: 1981-2010. Click and drag to zoom chart.



Accumulated Precipitation – GILA HOT SPRINGS, NM

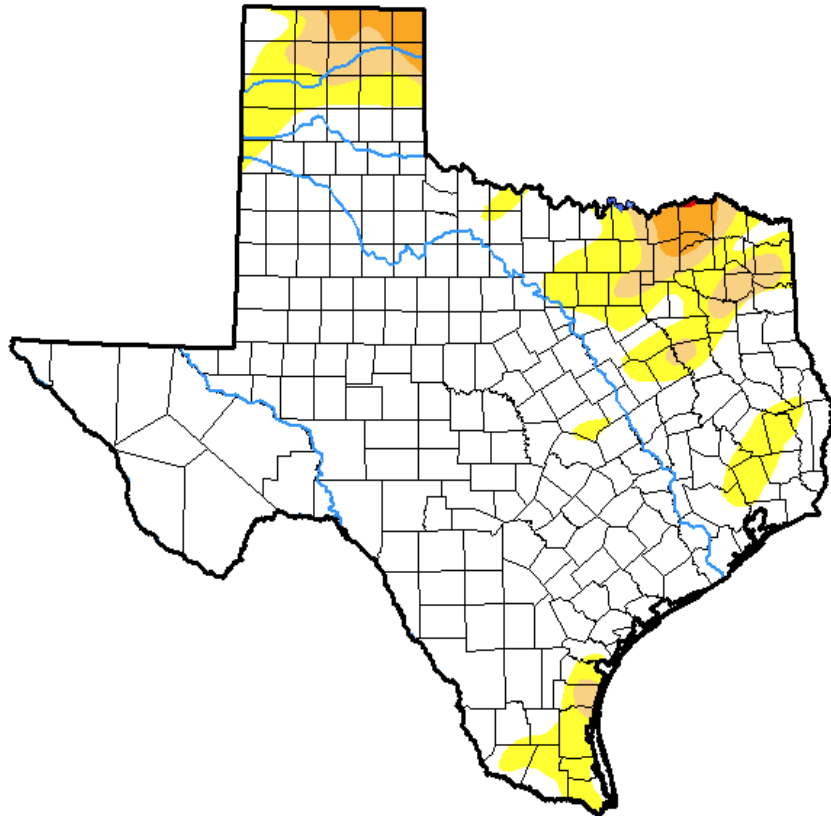
Click and drag to zoom to a shorter time interval. **16.06"** (black dots represent subsequent/missing values)



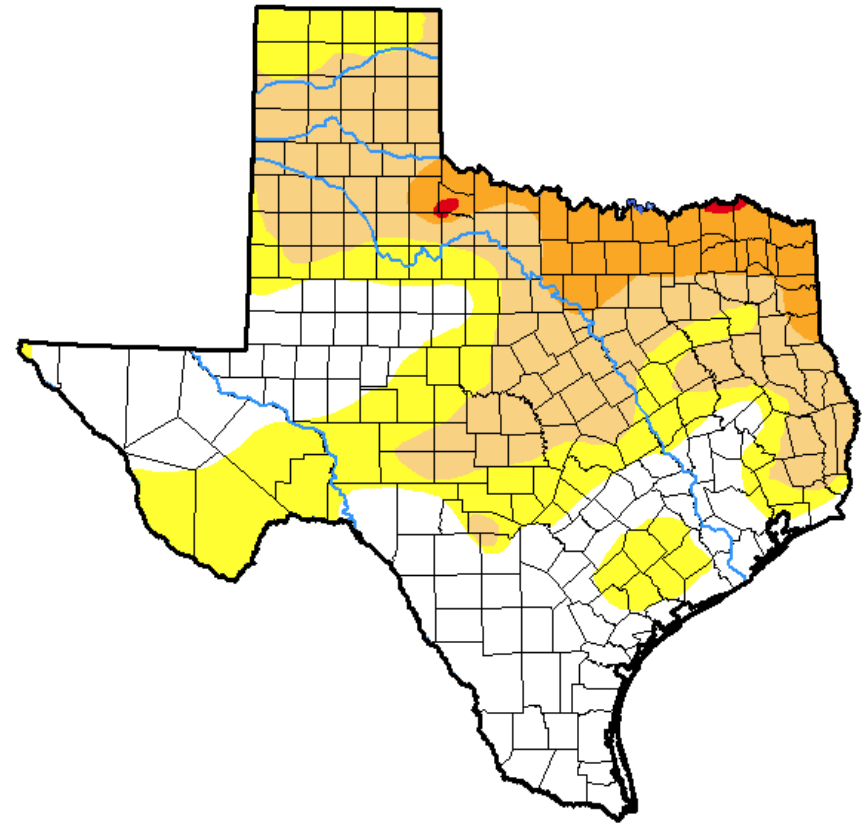
# Beginning and end of year drought conditions for Texas

- Abnormally Dry – D0
- Moderate Drought – D1
- Severe Drought – D2
- Extreme Drought – D3
- Exceptional – D4

**January 3, 2017**



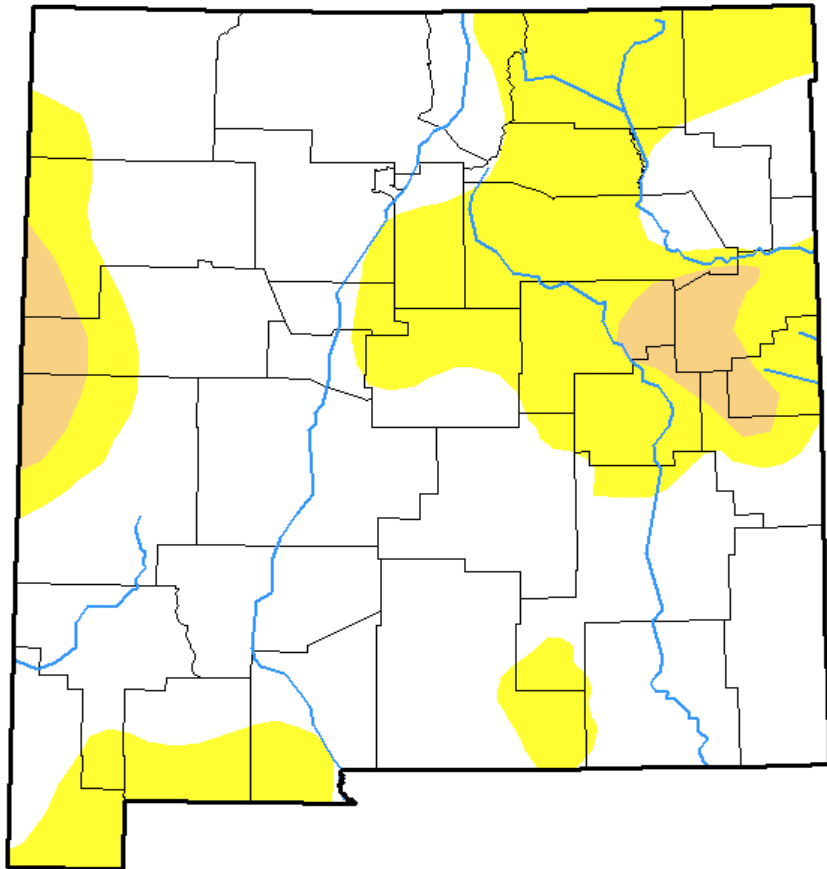
**December 19, 2017**



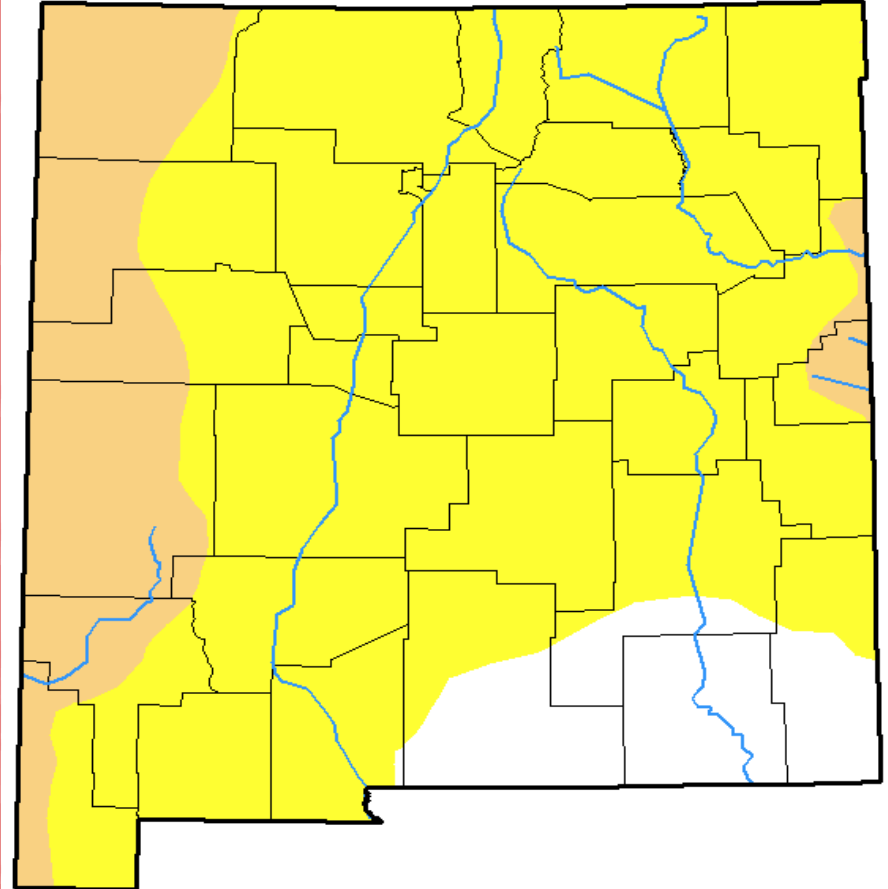
# Beginning and end of year drought conditions for New Mexico

- Abnormally Dry – D0
- Moderate Drought – D1
- Severe Drought – D2
- Extreme Drought – D3
- Exceptional – D4

**January 3, 2016**



**December 19, 2016**



# El Paso Weather Highlights 2017

Highest Temperature	111 on June 23
Lowest Temperature	24 on Dec 8
Greatest Daily Precipitation	1.45" on Jul 15
Greatest Daily Snowfall	0.1" on Dec 7
Wettest Month	July – 3.37"
Driest Month	March – Trace
Highest Peak Wind	69 mph on Jan 21
Last Freeze-Spring	Feb 16
First Freeze-Fall	Dec 8
Heating Degree Days (Normal)	1483(2476)
Cooling Degree Days (Normal)	2917(2270)

# El Paso Weather Highlights - All Time

<b>Highest Temperature</b>	<b>114 on June 30, 1994</b>
<b>Lowest Temperature</b>	<b>-8 on January 11, 1962</b>
<b>Greatest Daily Precipitation</b>	<b>6.50" on July 9, 1881</b>
<b>Greatest Daily Snowfall</b>	<b>14.5 on Dec 13, 1987</b>
<b>Wettest Month</b>	<b>8.18" July 1881</b>
<b>Driest Month</b>	<b>0.00" Numerous months</b>
<b>Highest Peak Wind</b>	<b>84 mph on March 26, 2010</b>
<b>Latest Last Freeze-Spring</b>	<b>May 2, 1967</b>
<b>Earliest Last Freeze-Spring</b>	<b>January 28, 1925</b>
<b>Latest First Freeze-Fall</b>	<b>December 20, 1939</b>
<b>Earliest First Freeze-Fall</b>	<b>October 16, 1880</b>
<b>Season Heating Degree Days</b>	<b>3256 in 1976-1977</b>
<b>Annual Cooling Degree Days</b>	<b>3141 in 2011</b>



# El Paso Summer Heat

## Consecutive Days at or Above 100 Deg

Rank	Number of Days	Ending Date
1	23	July 15, 1994
2	21	June 30, 1980
3	16	July 18, 2016
4	14	June 18, 1994
4	14	August 6, 1980
4	14	June 27, 1978
7	12	July 8 , 2005
7	12	June 30, 1998
9	11	June 29, 2013
9	11	July 1, 1979
9	11	June 24, 1960

# El Paso Summer Heat

## Consecutive Days at or Above 90 Deg

Rank	Number of Days	Ending Date
1	106	September 9, 2015
2	80	September 12, 1983
3	79	August 14, 1994
3	79	August 10, 1980
5	66	September 9, 1982
6	65	July 28, 2011
7	63	July 28 2014
8	61	August 23, 2009
9	57	July 23, 1956
10	56	July 22, 1977

# El Paso Winter Cold

## Consecutive Days with Lows at or Below 30 Deg

Rank	Number of Days	Ending Date
1	20	January 21, 1944
2	17	December 27, 1985
3	15	December 29, 1960
3	15	January 26, 1898
5	14	January 15, 1986
5	14	January 14, 1925
7	13	February 13, 2011
7	13	December 9, 1976
7	13	January 23, 1975
7	13	January 9, 1970
7	13	January 18, 1961
7	13	January 27, 1940

# El Paso Winter Cold

## Consecutive Days with Lows at or Below 20 Deg

Rank	Number of Days	Ending Date
1	6	December 19, 1985
1	6	January 9, 1971
1	6	January 13, 1967
1	6	January 25, 1963
1	6	January 17, 1963
6	5	February 5, 2011
6	5	December 20, 1996
6	5	January 13, 1962
6	5	December 27, 1953
6	5	February 3, 1951
6	5	January 31, 1948
6	5	January 10, 1913

# El Paso Drought-Consecutive Days with No Measureable Rain (Trace or less)

Rank	Number of Days	Ending Date
1	136	June 22, 1910
2	128	June 13, 2002
3	126	June 29, 1896
4	119	June 1, 2011
5	101	January 24, 2006
5	101	June 7, 1902
5	101	July 15, 1892
8	99	May 22, 1963
9	98	March 2, 1964
10	93	May 3, 1972

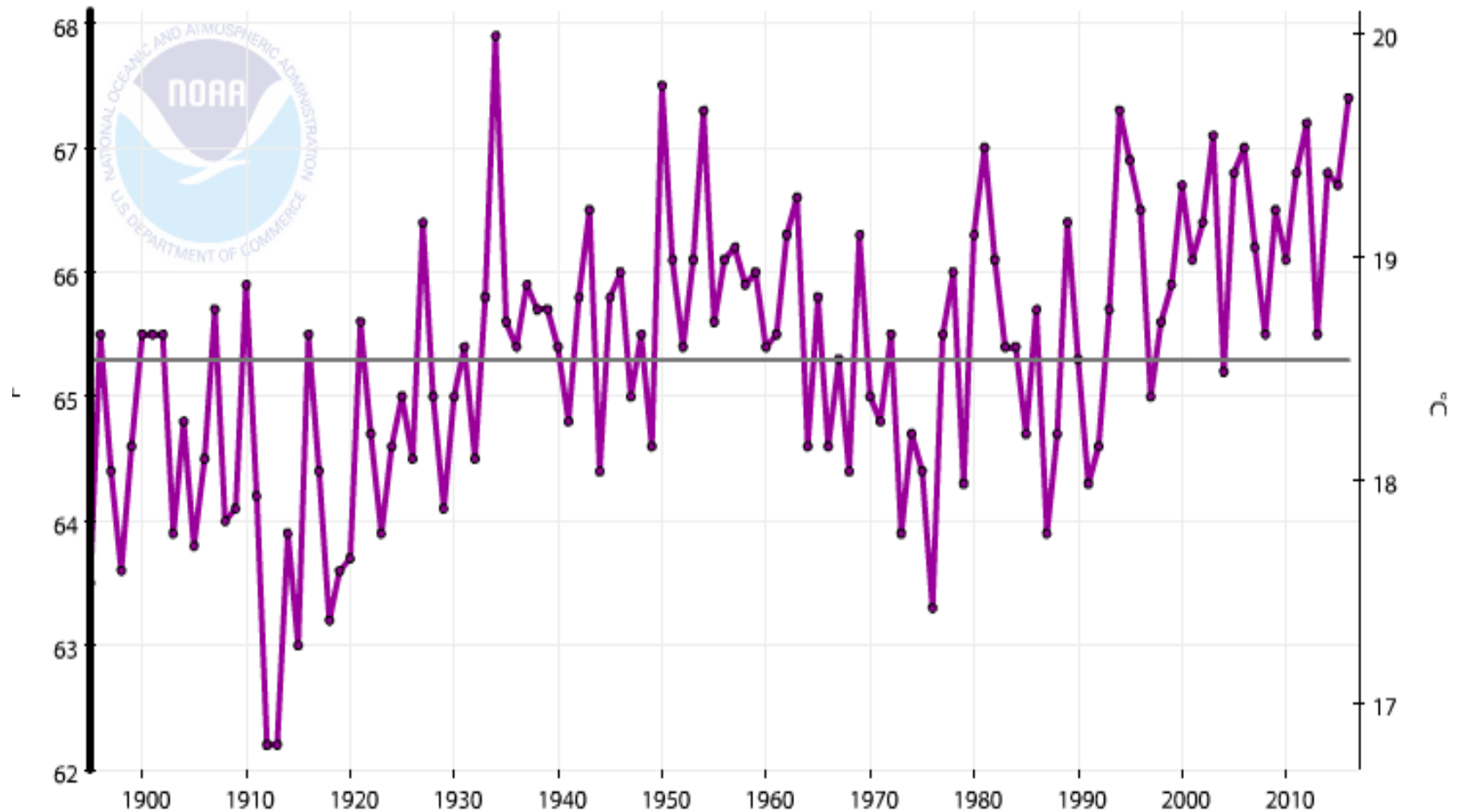
# El Paso Drought-Consecutive Days with No Rain

Rank	Number of Days	Ending Date
1	118	May 31, 2011
2	109	May 25, 2002
3	88	December 31, 1950
4	80	May 9, 1904
5	72	December 10, 1903
6	69	May 8, 1902
7	68	June 12 1996
8	64	July 4, 1916
9	63	December 9, 1954
10	58	December 15, 2005

# Yearly average temperature at El Paso: 1895-2017

El Paso, Texas, Average Temperature, January-December

— 1895-2016 Mean: 65.3°F    ● Avg Temperature

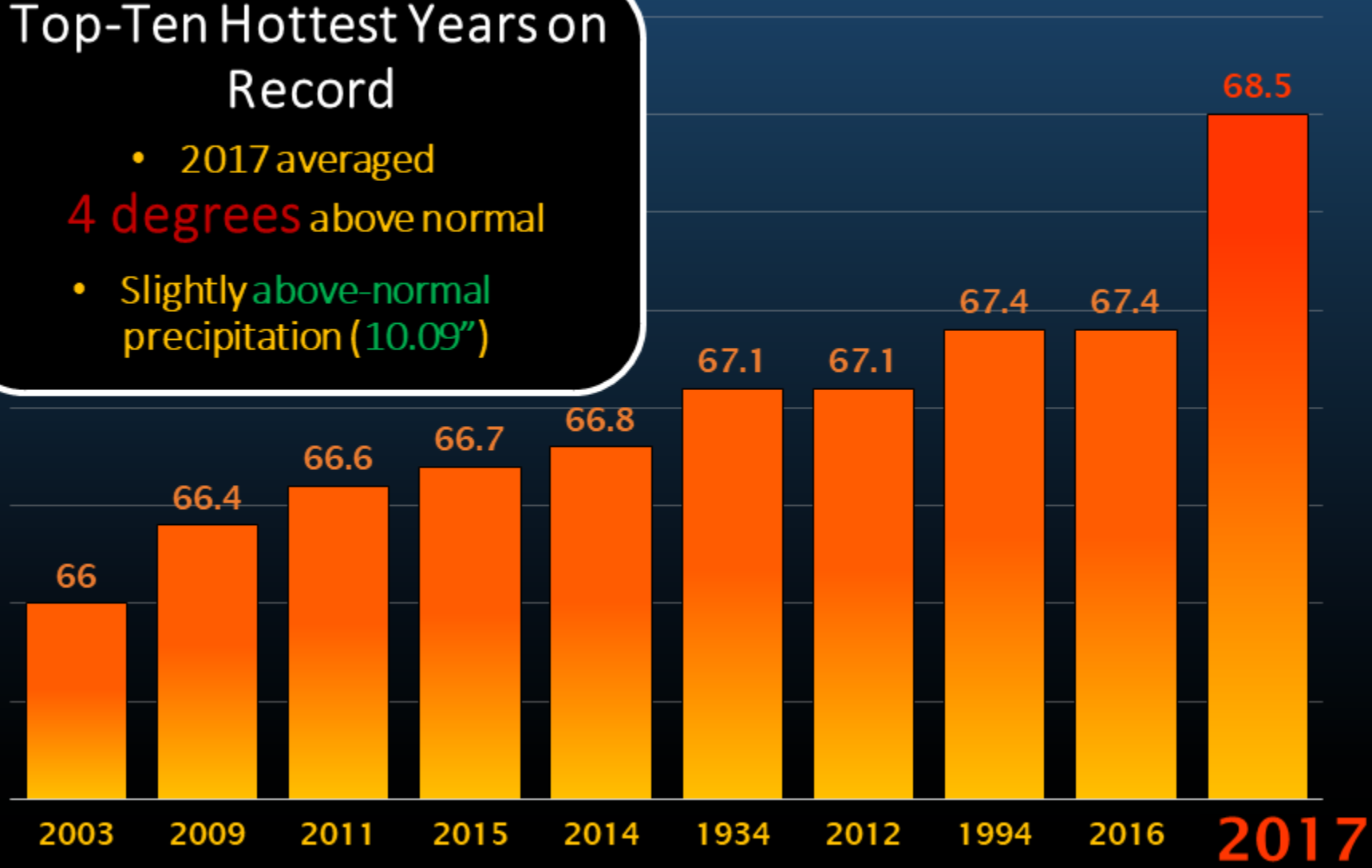


# A record-breaking 2017

## Hottest Year on Record for El Paso area

**Top-Ten Hottest Years on Record**

- 2017 averaged **4 degrees** above normal
- Slightly above-normal precipitation (**10.09"**)



Data source: Mean Average Temperature - KELP Automated Weather Station

Period of Record 1887-2017