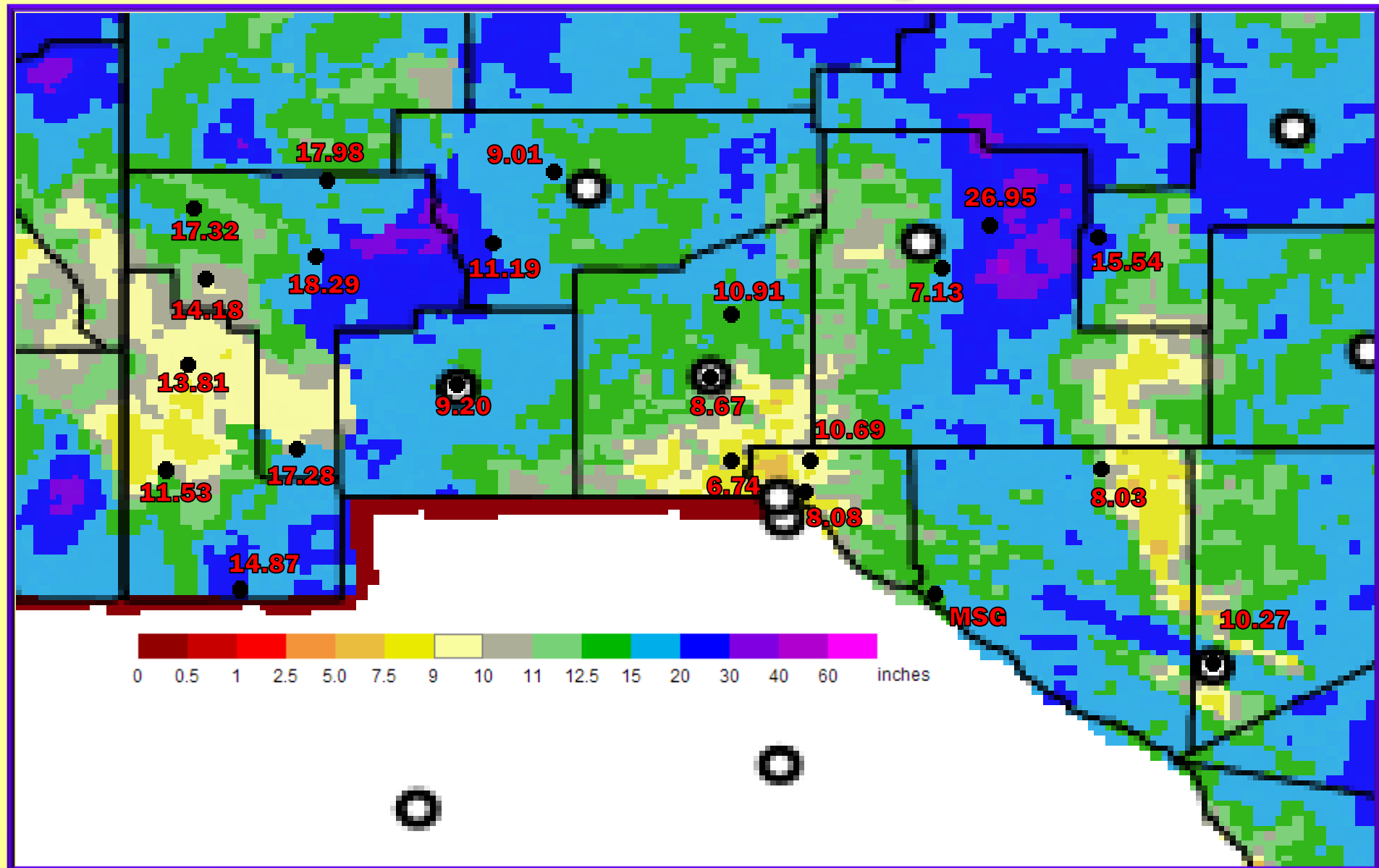


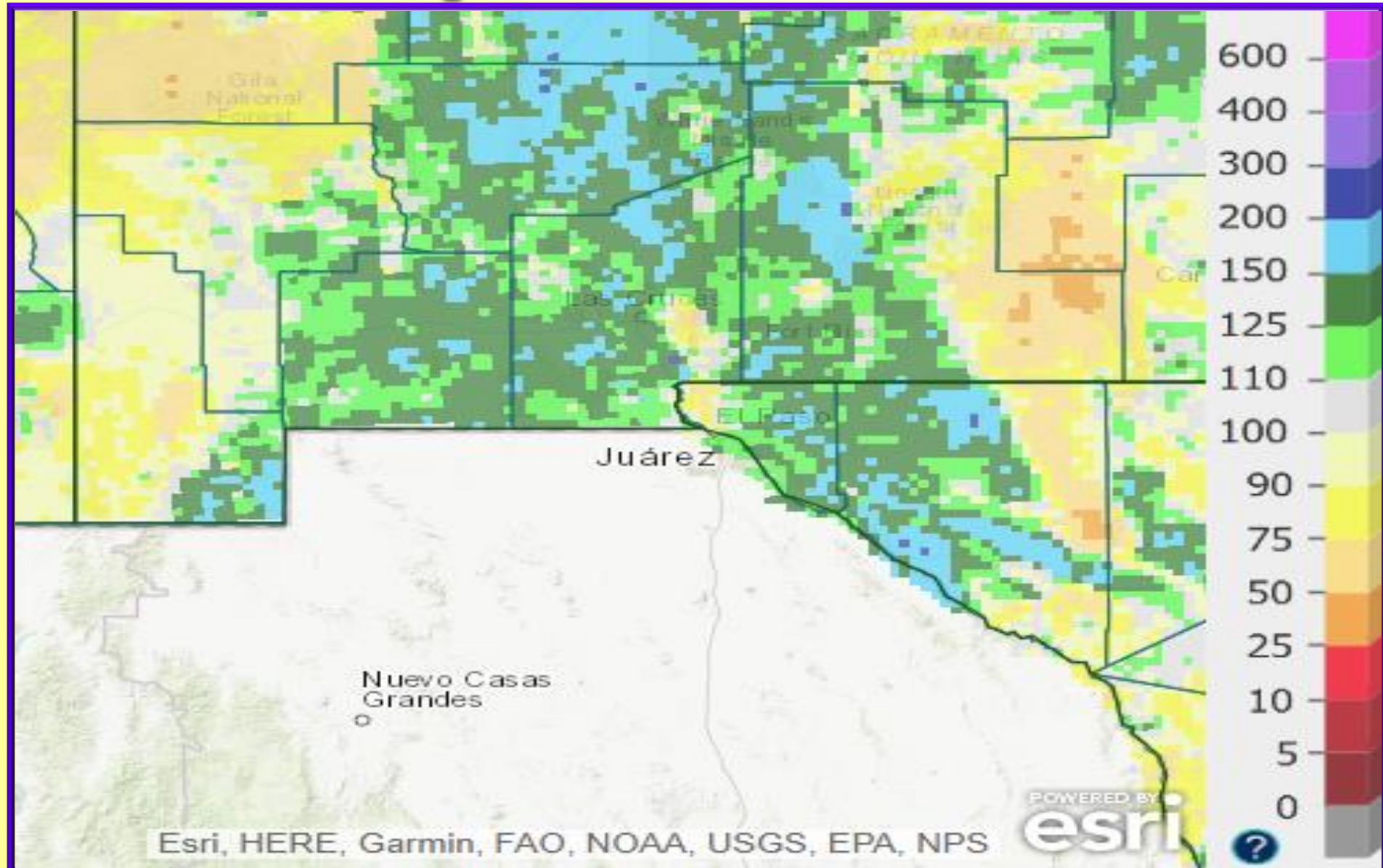
2019 in Review

- Rainfall data**
- Selected cities temp/precip data**
- Drought Data**
- El Paso statistics**

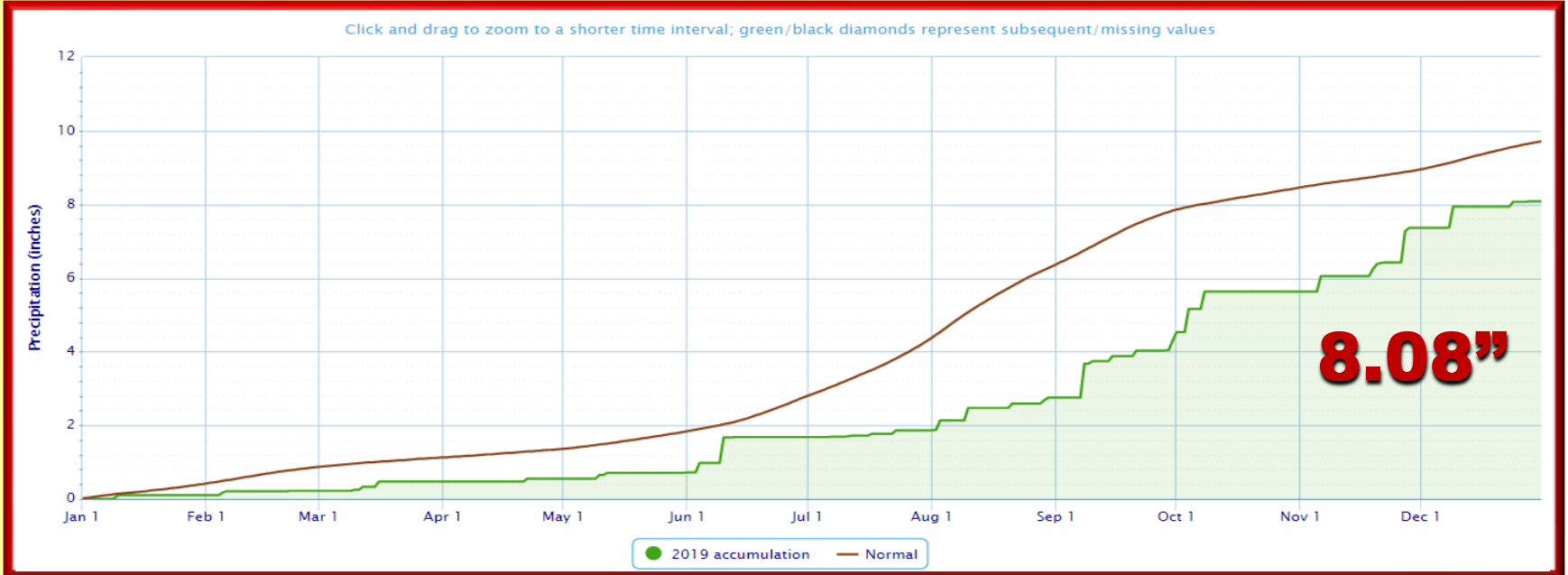
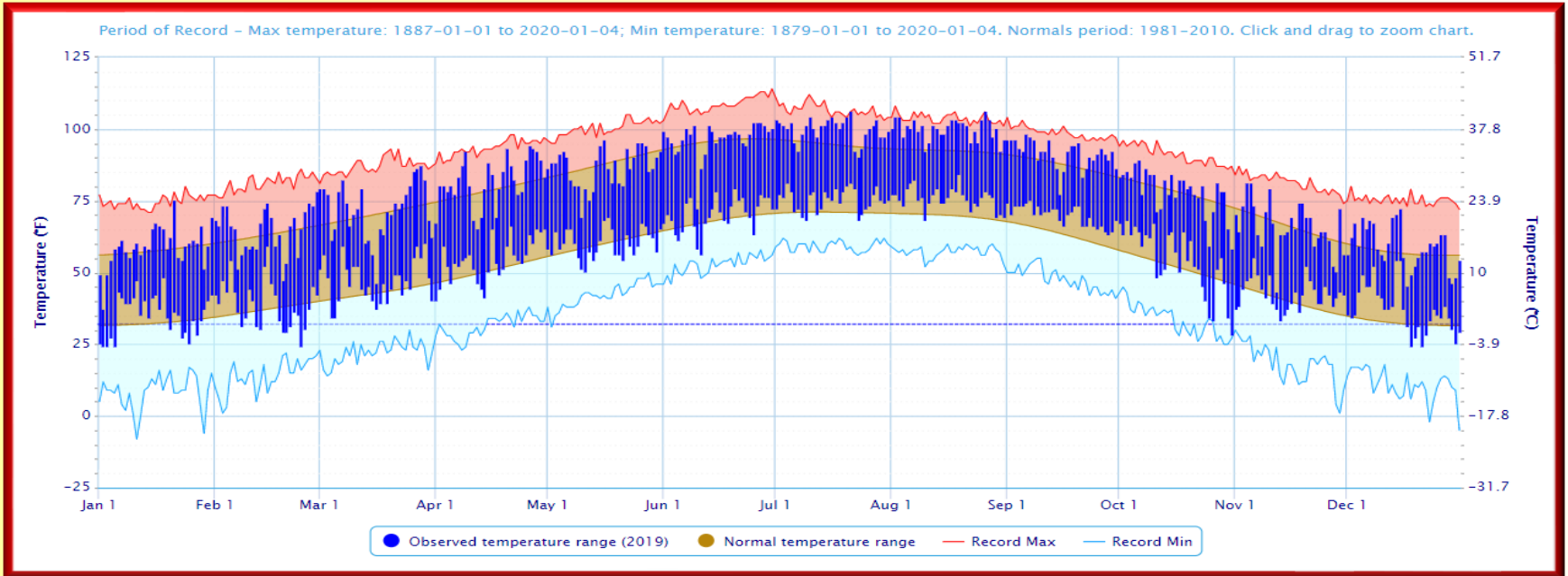
2019 radar rainfall estimate with surface rainfall reports



2019 radar rainfall estimate percent of normal



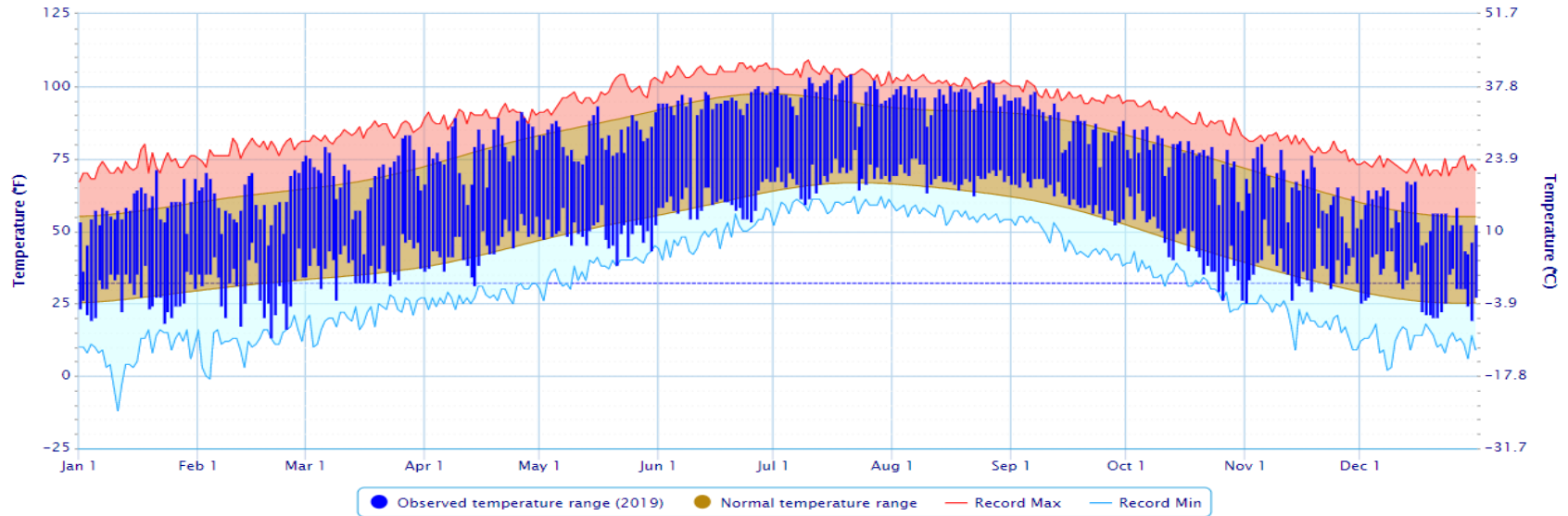
El Paso, TX



Deming, NM

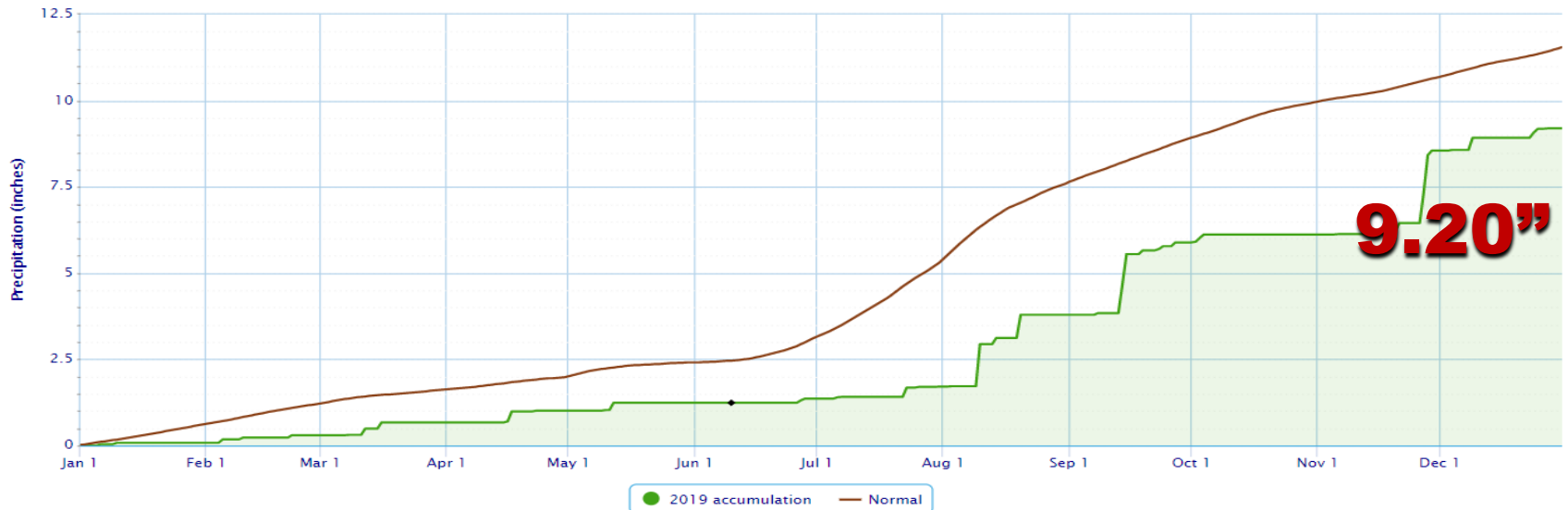
Daily Temperature Data – DEMING MUNICIPAL AP, NM

Period of Record – Max temperature: 1961-04-07 to 2020-01-04; Min temperature: 1961-04-08 to 2020-01-04. Normals period: 1981-2010. Click and drag to zoom chart.



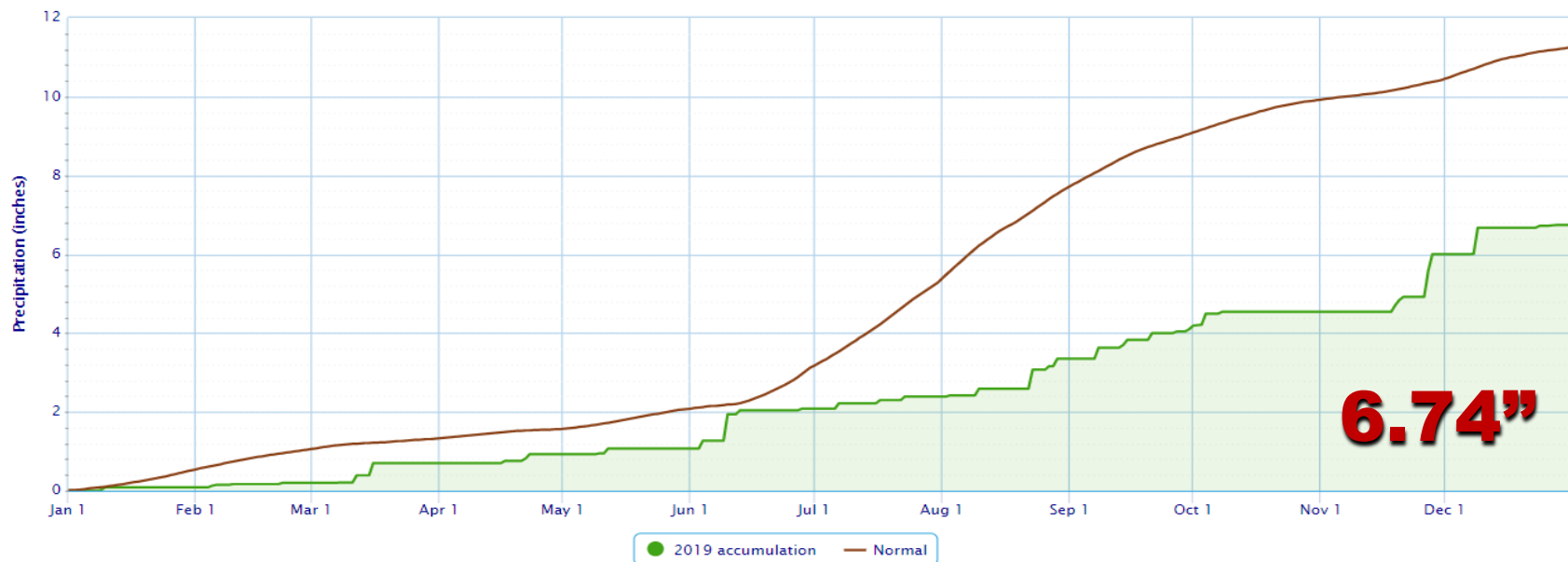
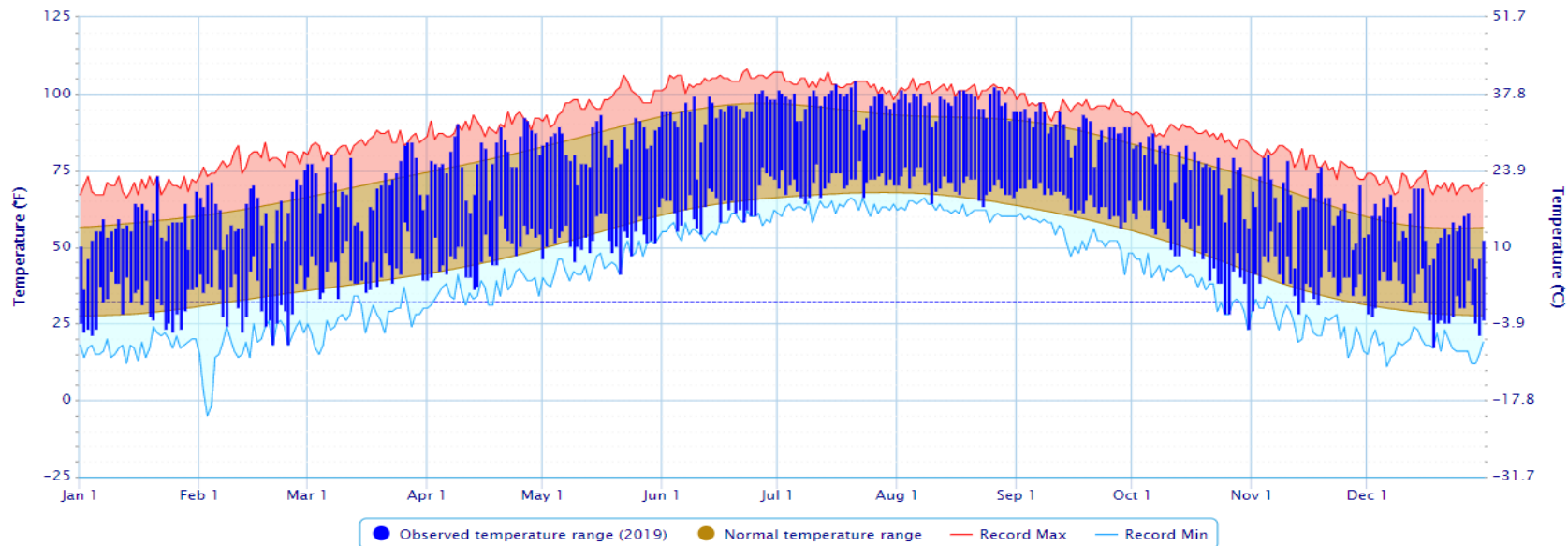
Accumulated Precipitation – DEMING MUNICIPAL AP, NM

Click and drag to zoom to a shorter time interval; green/black diamonds represent subsequent/missing values

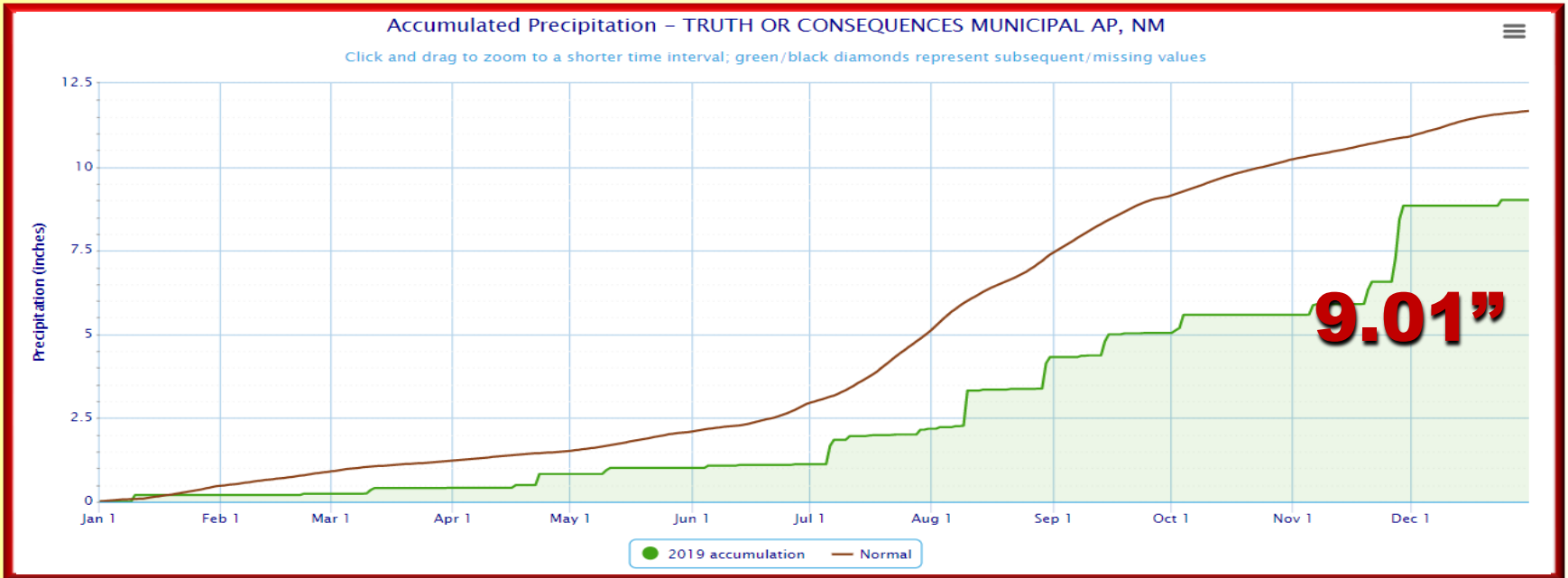
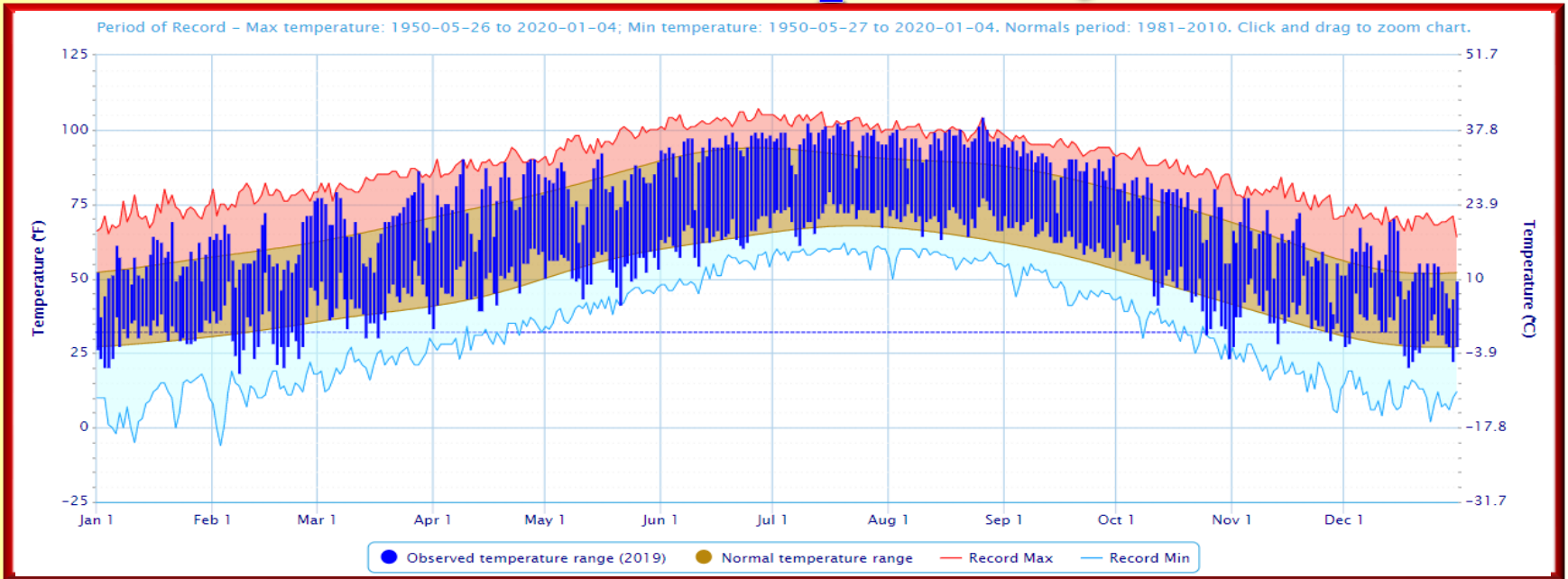


Santa Teresa, NM

Period of Record – 2002-02-25 to 2020-01-04. Normals period: 1981-2010. Click and drag to zoom chart.



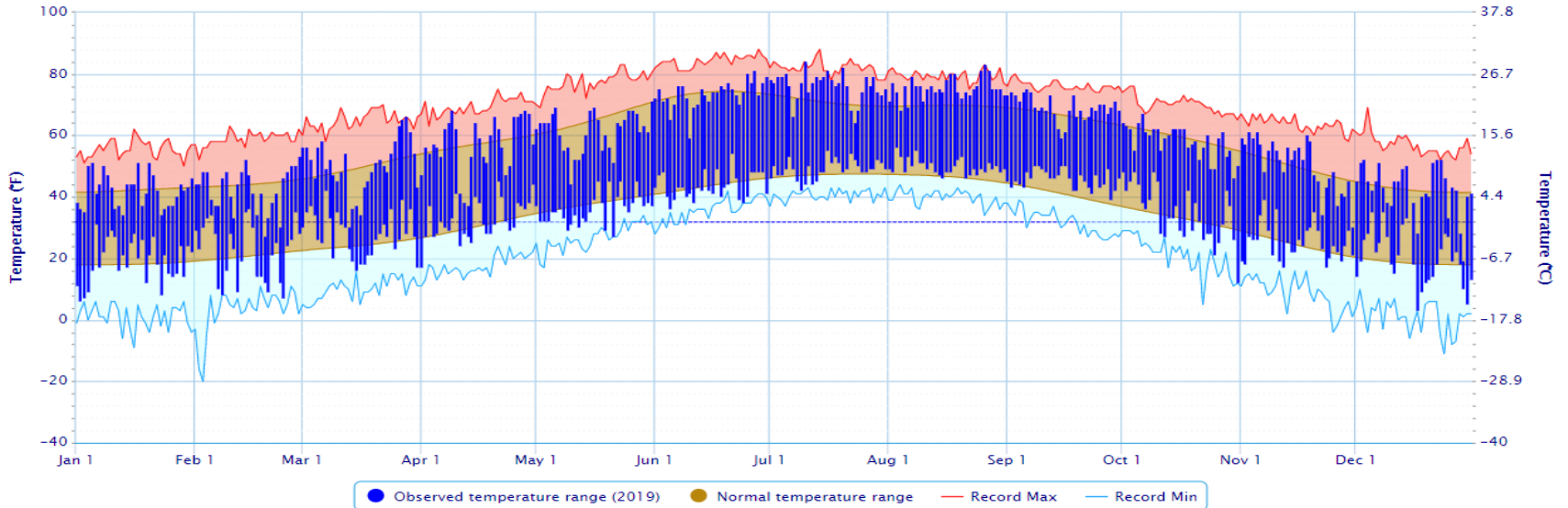
Truth Or Consequences, NM



Cloudcroft, NM

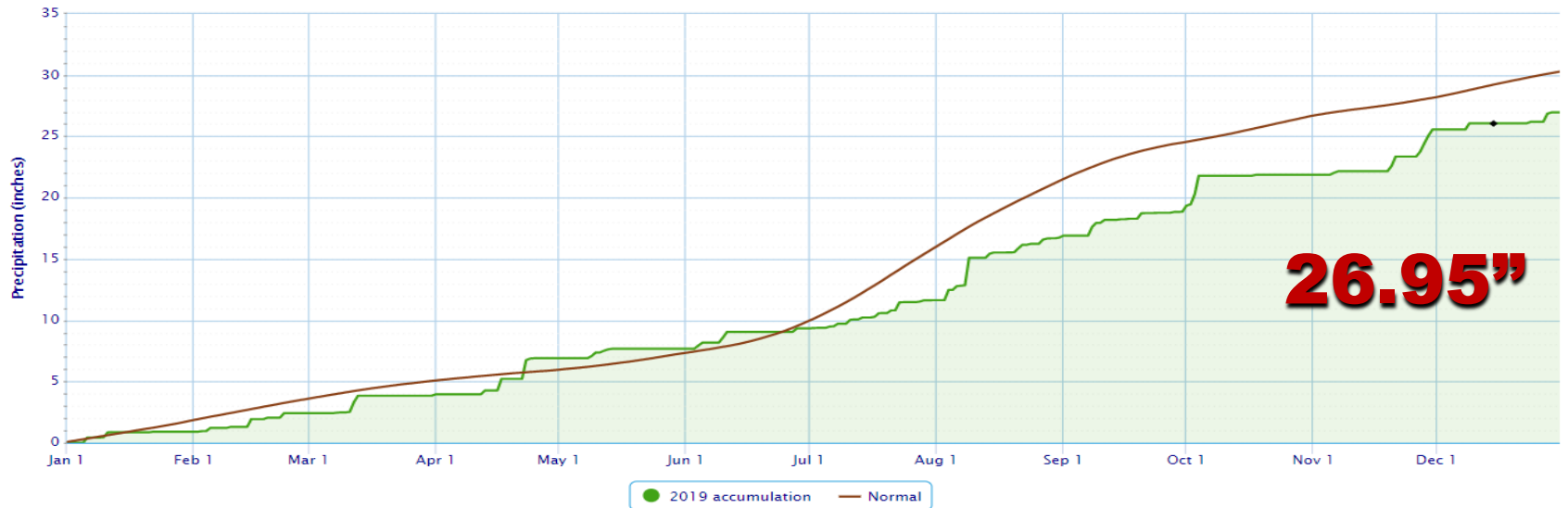
Daily Temperature Data – CLOUDCROFT, NM

Period of Record – 1987-09-01 to 2020-01-04. Normals period: 1981-2010. Click and drag to zoom chart.



Accumulated Precipitation – CLOUDCROFT, NM

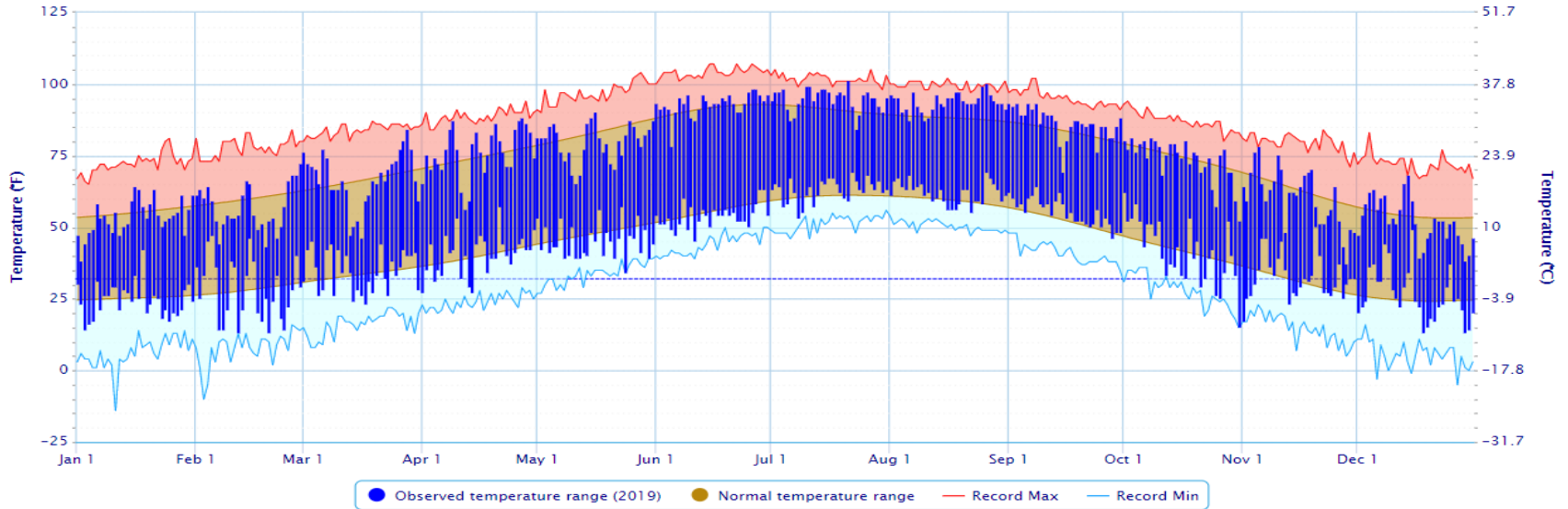
Click and drag to zoom to a shorter time interval; green/black diamonds represent subsequent/missing values



Hillsboro, NM

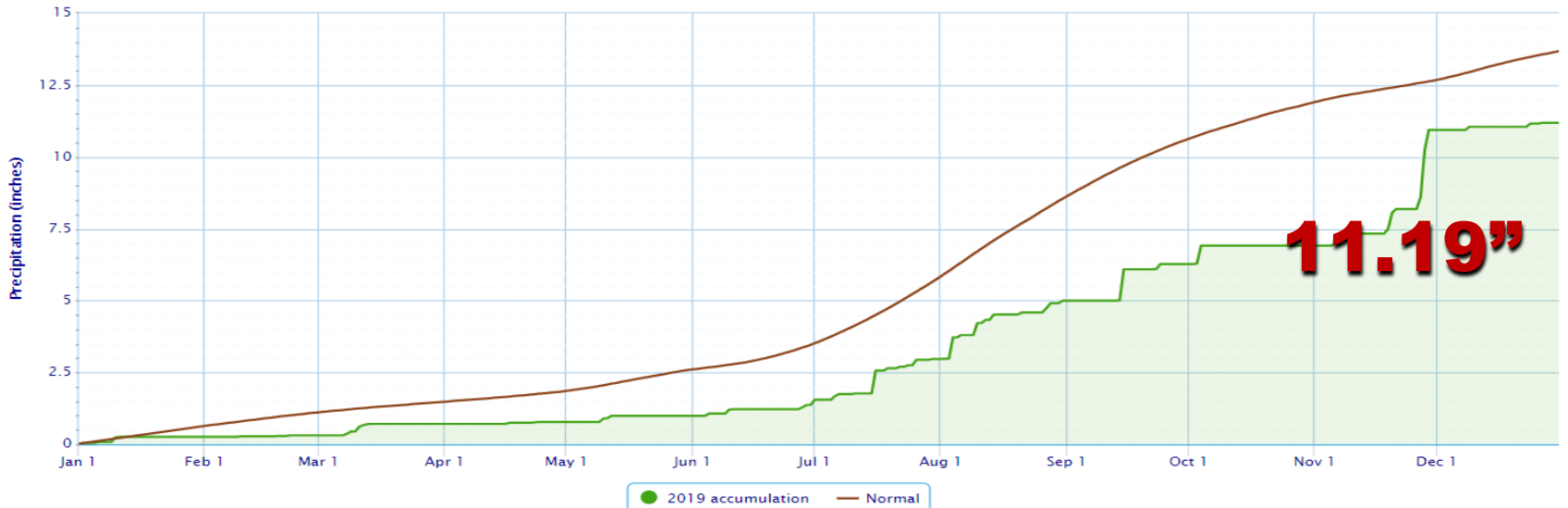
Daily Temperature Data – HILLSBORO, NM

Period of Record – 1893-01-01 to 2020-01-04. Normals period: 1981-2010. Click and drag to zoom chart.



Accumulated Precipitation – HILLSBORO, NM

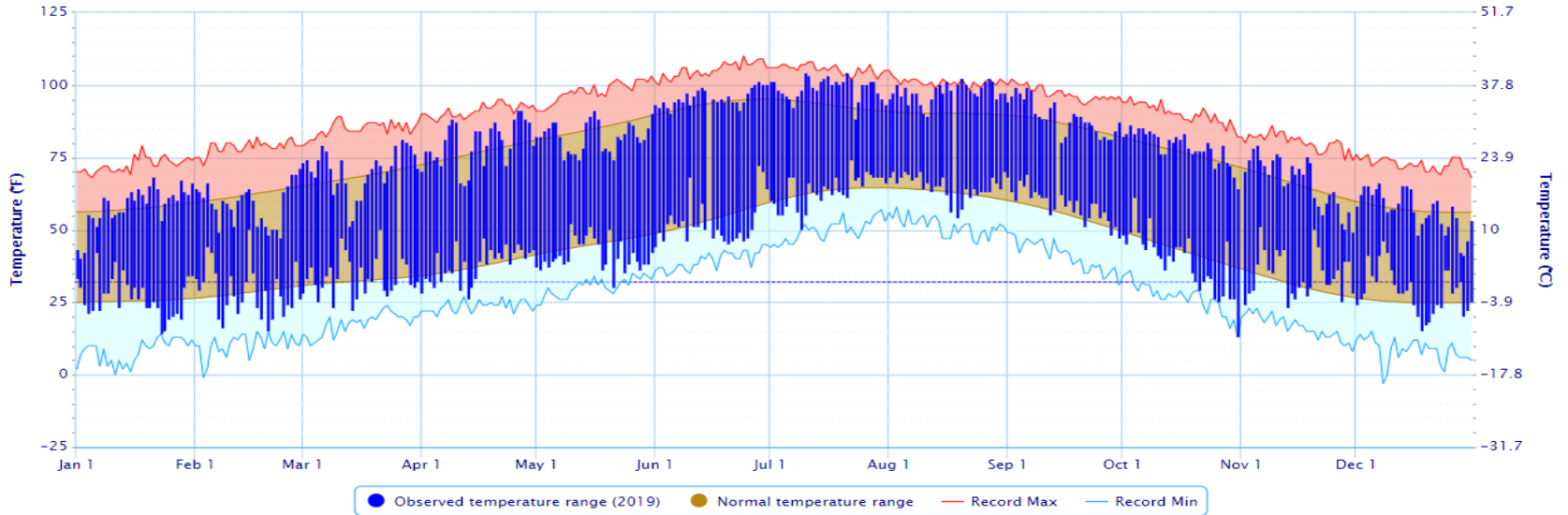
Click and drag to zoom to a shorter time interval; green/black diamonds represent subsequent/missing values



Redrock, NM

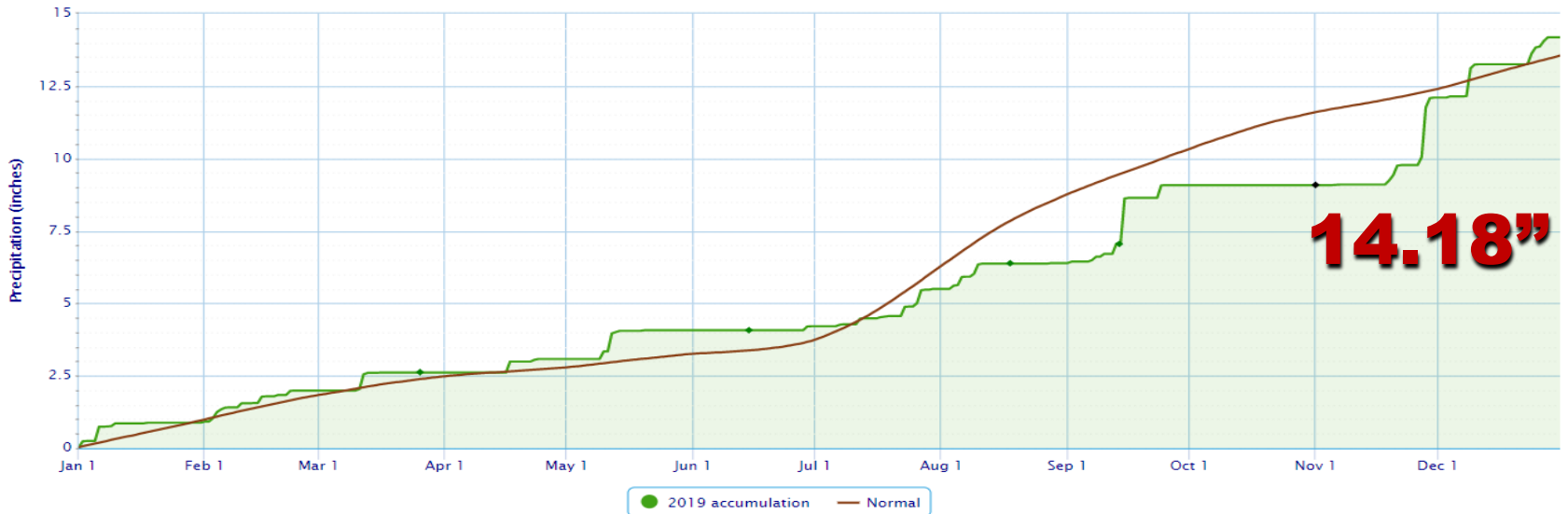
Daily Temperature Data – REDROCK 1 NNE, NM

Period of Record – 1958-02-01 to 2020-01-04. Normals period: 1981-2010. Click and drag to zoom chart.



Accumulated Precipitation – REDROCK 1 NNE, NM

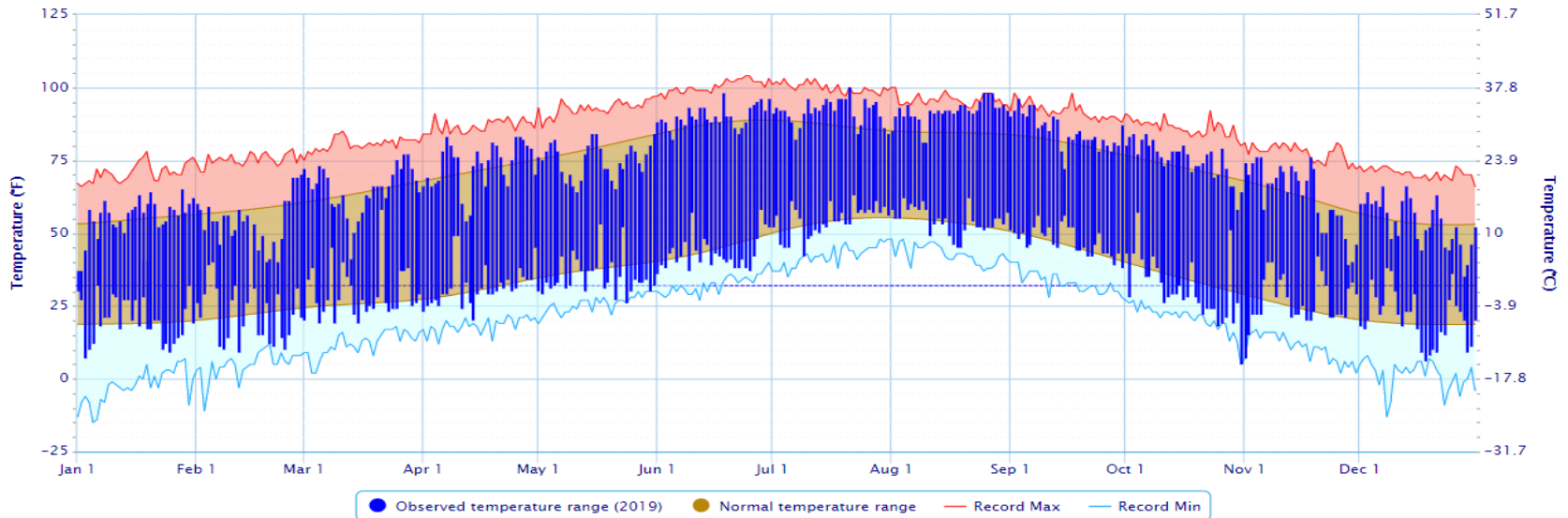
Click and drag to zoom to a shorter time interval; green/black diamonds represent subsequent/missing values



Gila Hot Springs, NM

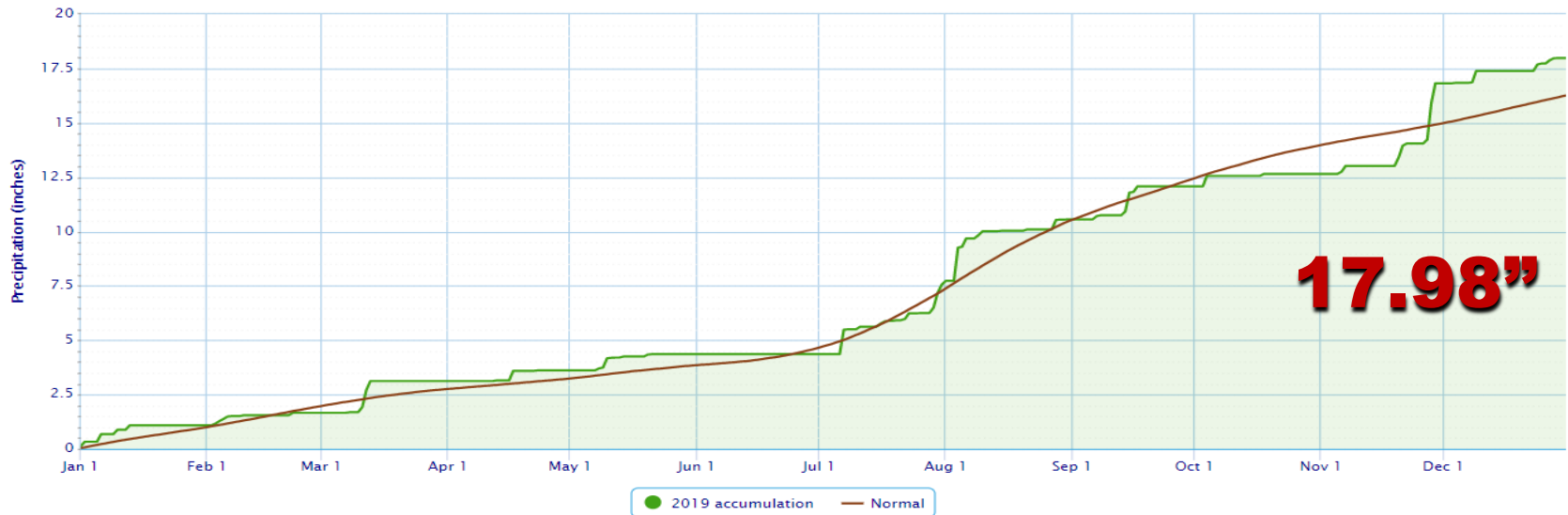
Daily Temperature Data – GILA HOT SPRINGS, NM

Period of Record – 1957-05-24 to 2020-01-04. Normals period: 1981-2010. Click and drag to zoom chart.



Accumulated Precipitation – GILA HOT SPRINGS, NM

Click and drag to zoom to a shorter time interval; green/black diamonds represent subsequent/missing values

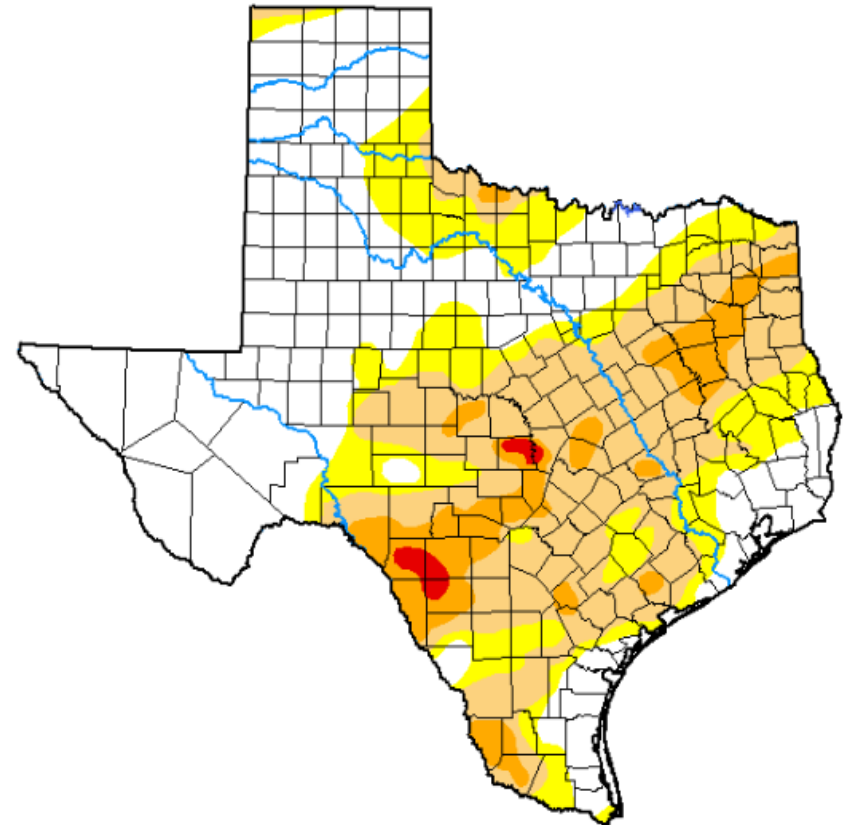
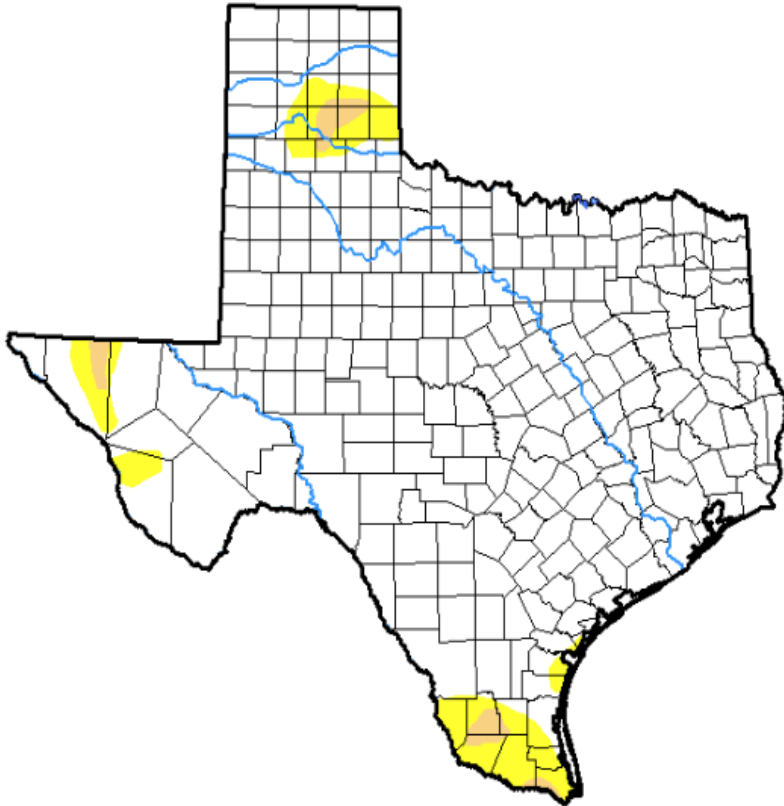


Beginning and end of year drought conditions for Texas

- Abnormally Dry – D0
- Moderate Drought – D1
- Severe Drought – D2
- Extreme Drought – D3
- Exceptional – D4

January 1, 2019

December 31, 2019

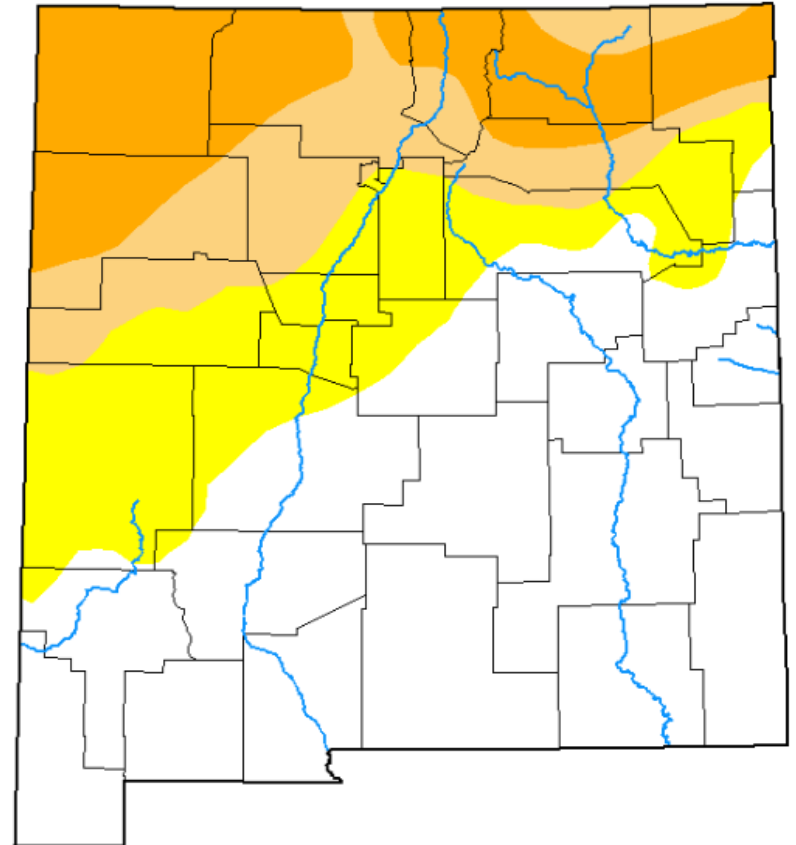
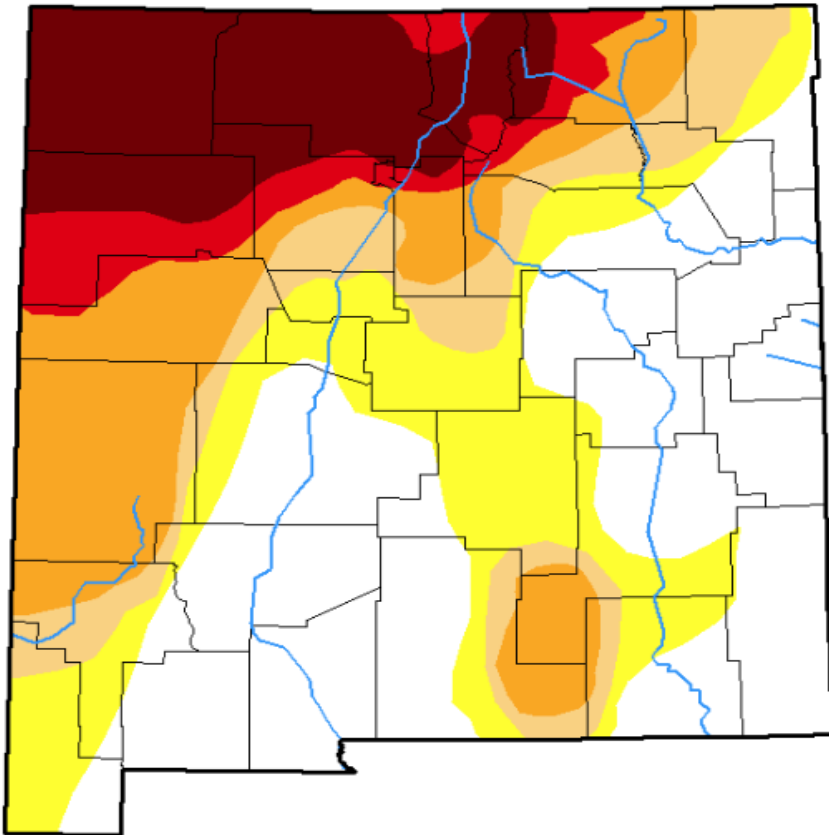


Beginning and end of year drought conditions for New Mexico

- Abnormally Dry – D0
- Moderate Drought – D1
- Severe Drought – D2
- Extreme Drought – D3
- Exceptional – D4

January 1, 2019

December 31, 2019



El Paso Weather Highlights 2019

Highest Temperature	106 on Jul 21, Aug 26
Lowest Temperature	24 on Jan 17, Feb 24, Dec 21
Greatest Daily Precipitation	.92” on Sep 8
Greatest Daily Snowfall	Trace on several days
Wettest Month	November – 1.73”
Driest Month	April – .08”
Highest Peak Wind	72 mph on Mar 13
Last Freeze-Spring	Feb 25
First Freeze-Fall	Oct 31
Heating Degree Days (Normal)	2131(2231)
Cooling Degree Days (Normal)	3007(2626)

El Paso Weather Highlights - All Time

Highest Temperature	114 on June 30, 1994
Lowest Temperature	-8 on January 11, 1962
Greatest Daily Precipitation	6.50" on July 9, 1881
Greatest Daily Snowfall	14.5 on Dec 13, 1987
Wettest Month	8.18" July 1881
Driest Month	0.00" Numerous months
Highest Peak Wind	84 mph on March 26, 2010
Latest Last Freeze-Spring	May 2, 1967
Earliest Last Freeze-Spring	January 28, 1925
Latest First Freeze-Fall	December 20, 1939
Earliest First Freeze-Fall	October 16, 1880
Season Heating Degree Days	3256 in 1976-1977
Annual Cooling Degree Days	3141 in 2011

El Paso Summer Heat

Consecutive Days at or Above 100 Deg

Rank	Number of Days	Ending Date
1	23	July 15, 1994
2	21	June 30, 1980
3	16	July 18, 2016
4	14	June 18, 1994
4	14	August 6, 1980
4	14	June 27, 1978
7	12	July 8 , 2005
7	12	June 30, 1998
9	11	June 29, 2013
9	11	July 1, 1979
9	11	June 24, 1960

El Paso Summer Heat

Number of Days Each Summer at or Above 100 Deg
(30 Year Average=25 days)

Year	Days	Year	Days	Year	Days
2019	47	2008	15	1997	17
2018	46	2007	16	1996	11
2017	23	2006	18	1995	11
2016	38	2005	36	1994	62
2015	18	2004	16	1993	25
2014	30	2003	18	1992	26
2013	26	2002	32	1991	11
2012	28	2001	16	1990	18
2011	50	2000	13	1989	22
2010	30	1999	8	1988	3
2009	19	1998	18	1987	18

El Paso Summer Heat

Consecutive Days at or Above 90 Deg

Rank	Number of Days	Ending Date
1	106	September 9, 2015
2	80	September 12, 1983
3	79	August 14, 1994
3	79	August 10, 1980
5	66	September 9, 1982
6	65	July 28, 2011
7	63	July 28 2014
8	61	August 23, 2009
9	57	July 23, 1956
10	56	July 22, 1977

El Paso Winter Cold

Consecutive Days with Lows at or Below 32 Deg

Rank	Number of Days	Ending Date
1	27	January 23, 1944
2	25	December 30, 1960
3	23	January 24, 1925
4	20	January 29, 1987
4	20	December 30, 1985
6	19	January 22, 1967
7	18	December 27, 1966
7	18	January 12, 1893
9	17	January 8, 1954
9	17	February 2, 1897
9	17	January 13, 1881
12	16	January 29, 2001
12	16	January 27, 1898
12	16	January 15, 1886

El Paso Winter Cold

Number of Days Each Year With Lows at or Below 32 Deg
(30 Year Average=43 days)

Year	Days	Year	Days	Year	Days
2019	28	2008	43	1997	56
2018	31	2007	46	1996	55
2017	21	2006	38	1995	29
2016	31	2005	29	1994	42
2015	38	2004	41	1993	39
2014	37	2003	43	1992	50
2013	57	2002	59	1991	51
2012	36	2001	67	1990	62
2011	56	2000	44	1989	66
2010	43	1999	46	1988	80
2009	37	1998	46	1987	96

El Paso Winter Cold

Consecutive Days with Lows at or Below 20 Deg

Rank	Number of Days	Ending Date
1	6	December 19, 1985
1	6	January 9, 1971
1	6	January 13, 1967
1	6	January 25, 1963
1	6	January 17, 1963
6	5	February 5, 2011
6	5	December 20, 1996
6	5	January 13, 1962
6	5	December 27, 1953
6	5	February 3, 1951
6	5	January 31, 1948
6	5	January 10, 1913

El Paso Drought-Consecutive Days with No Measureable Rain (Trace or less)

Rank	Number of Days	Ending Date
1	136	June 22, 1910
2	128	June 13, 2002
3	126	June 29, 1896
4	119	June 1, 2011
5	101	January 24, 2006
5	101	June 7, 1902
5	101	July 15, 1892
8	99	May 22, 1963
9	98	March 2, 1964
10	93	May 3, 1972

El Paso Drought-Consecutive Days with No Rain

Rank	Number of Days	Ending Date
1	118	May 31, 2011
2	109	May 25, 2002
3	88	December 31, 1950
4	80	May 9, 1904
5	72	December 10, 1903
6	69	May 8, 1902
7	68	June 12 1996
8	64	July 4, 1916
9	63	December 9, 1954
10	58	December 15, 2005