

2022 in Review

- Rainfall data**
- Selected cities temp/precip data**
- Drought Data**
- El Paso statistics**

2022 In Review

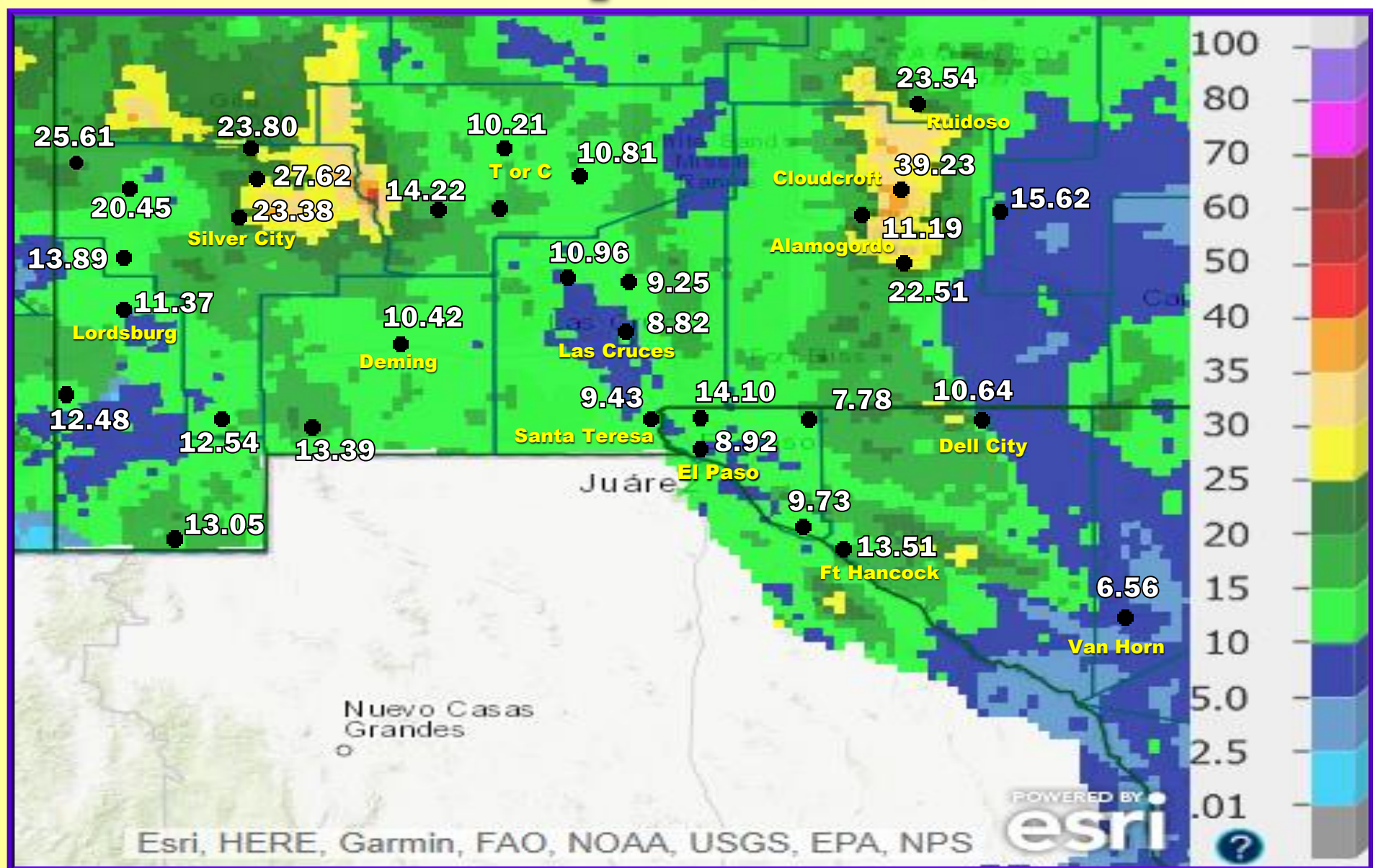
2022 was an interesting year in that we continued in a long stretch of the La Niña phase in the ENSO pattern. The year began in the second year of a “double dip” La Niña (two consecutive years of La Niña). With La Niña firmly entrenched at the end of the year, we began a triple dip La Niña (3 consecutive years), which would only be the third occurrence of this since ENSO records began in 1950. Though La Niña’s tend to be drier than normal, the past two Monsoon seasons have been wetter than normal. This has really eased up on the drought conditions.

Back to 2022, the year began on a cold note. January through March monthly temperatures were well below normal for much of the area, while most of the area excepting Dona Ana, western Otero, and Hudspeth Counties, received much below normal precipitation. Then April through July turned around to the other end of the spectrum, with very dry conditions and well above normal temperatures. In fact, for most places, these four months finished in the top 10 warmest months for each of the four months. April and May saw most sites fail to even record any rainfall. Thus fire conditions rapidly deteriorated and wildfires began to develop over several areas of New Mexico. In our area the big fire was in the Black Range, named the Black Fire. It ended up being one of the biggest fires in New Mexico history.

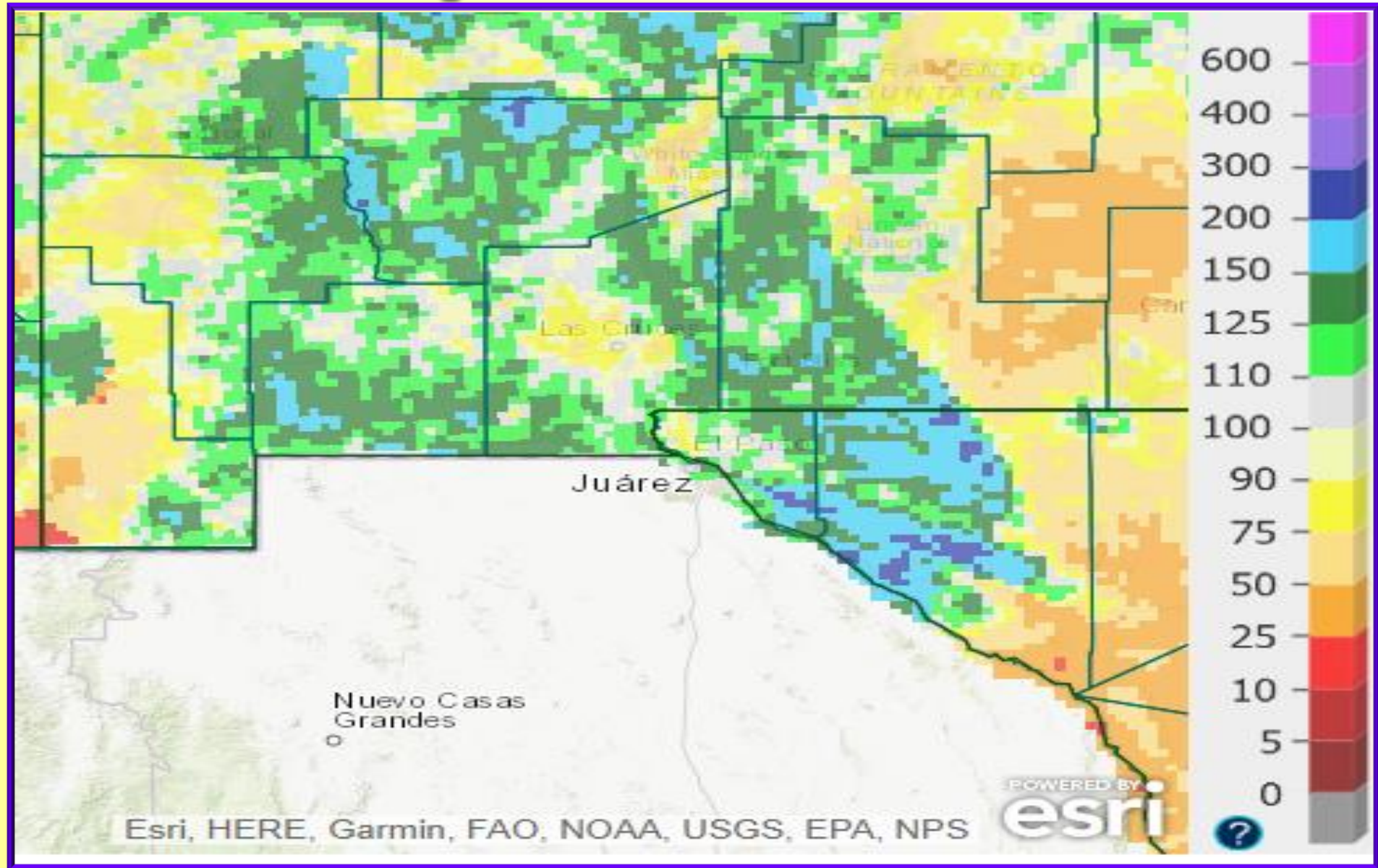
2022 In Review

Despite the Monsoon season beginning about three weeks earlier than normal (mid/late June), the Monsoon rains mostly held off until late July and August before copious amounts of rainfall occurred. In fact, many places had reached their summer average rainfall by the end of August. The year ended in a bit more typical fashion; just a bit above normal rainfall most areas. In temperatures we saw a very cold November bookended by a warmer than normal October and December.

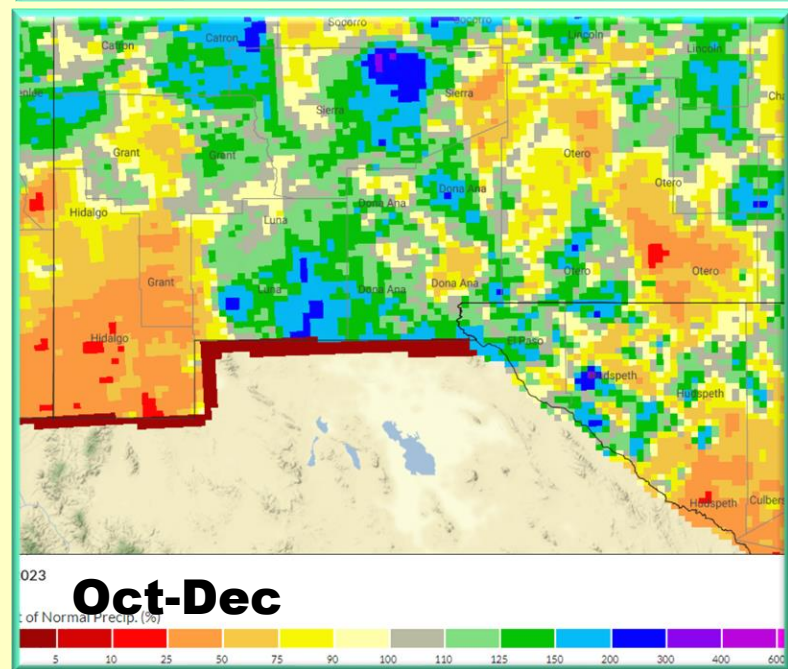
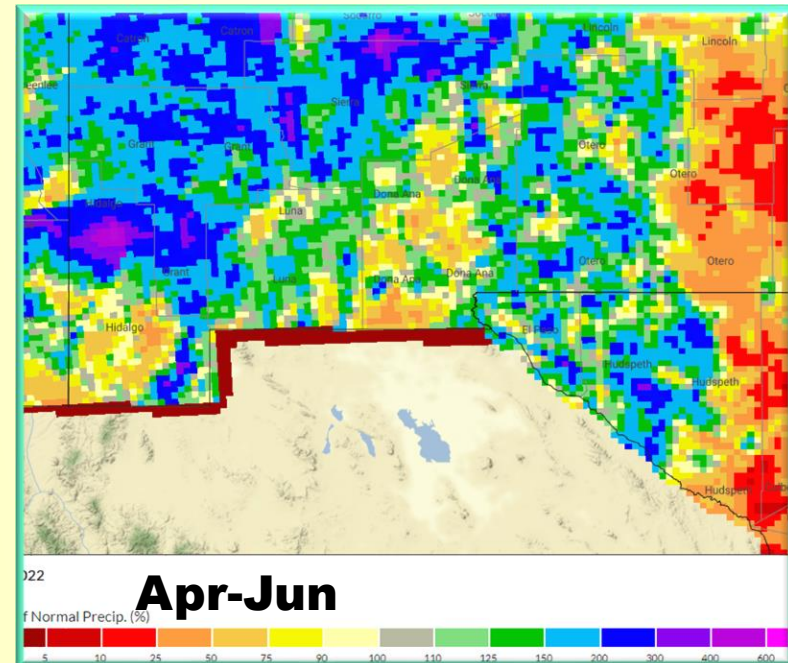
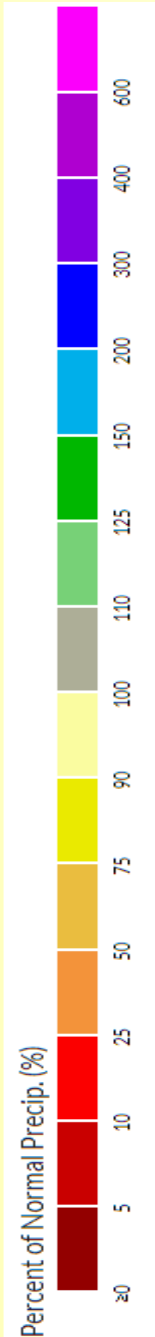
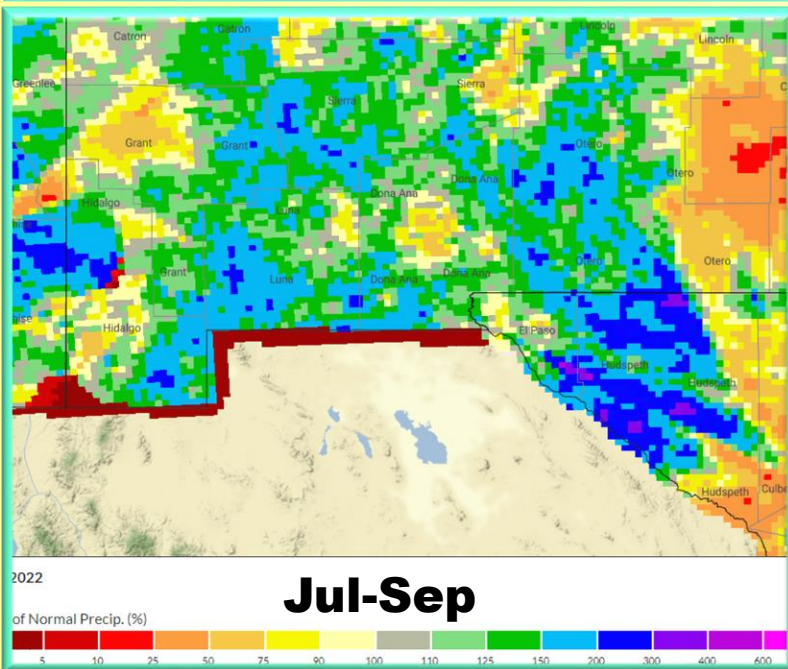
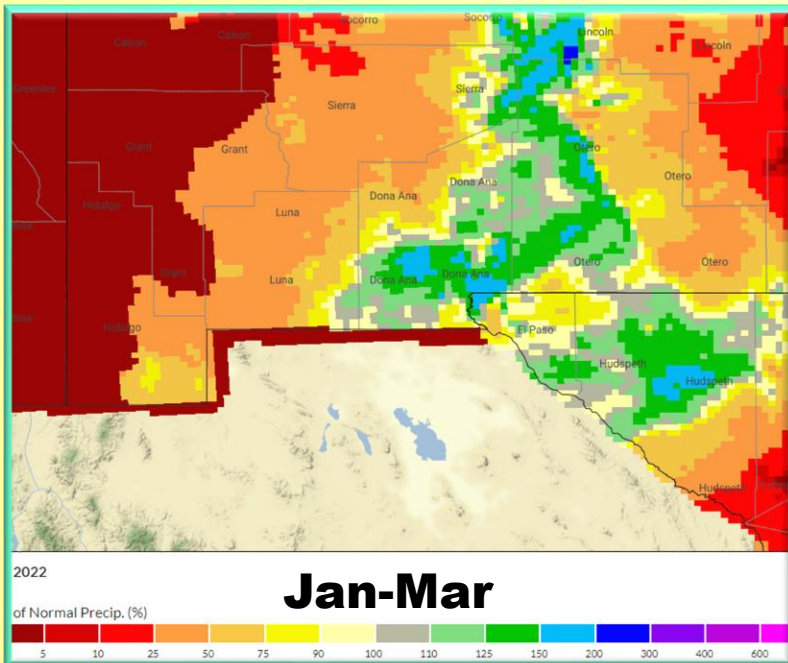
2022 radar rainfall estimate with surface rainfall reports (in inches)



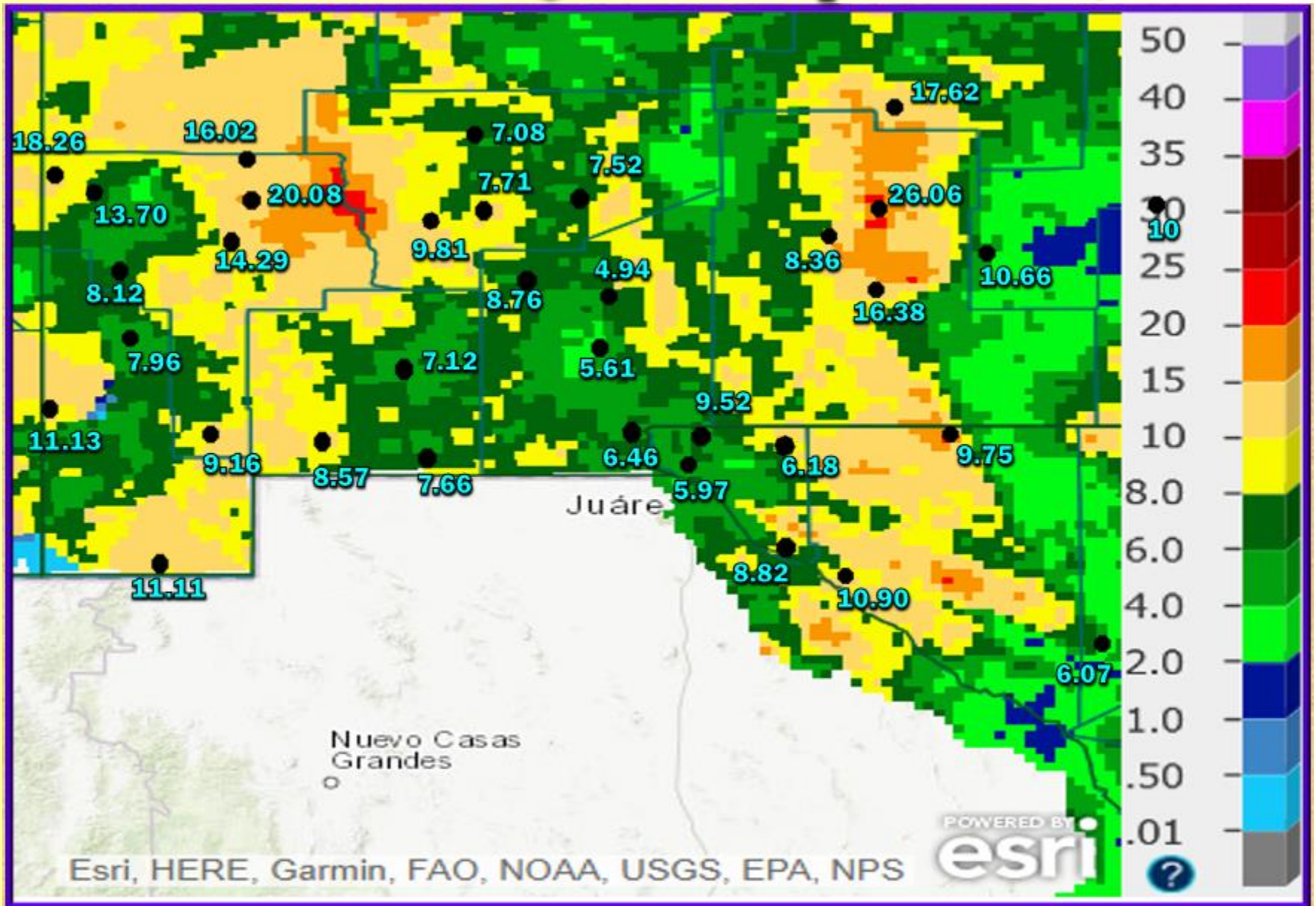
2022 radar rainfall estimate percent of normal



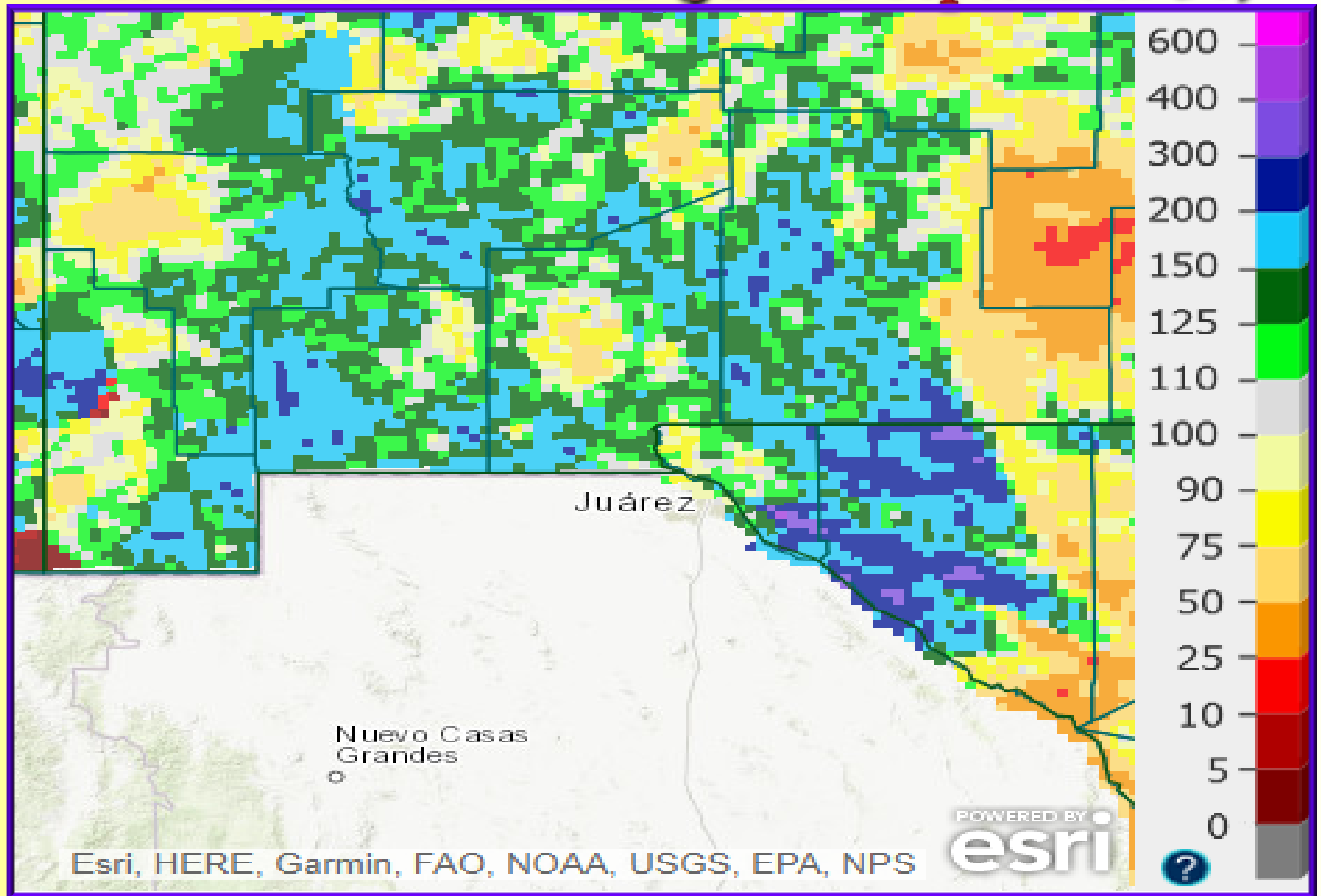
2022 quarterly radar rainfall estimated percent of normal



Radar rainfall estimate for the Monsoon Season 2022 (June 1 – September 30)



Radar rainfall estimate percent of normal for Monsoon season 2022 (June 1-September 30)

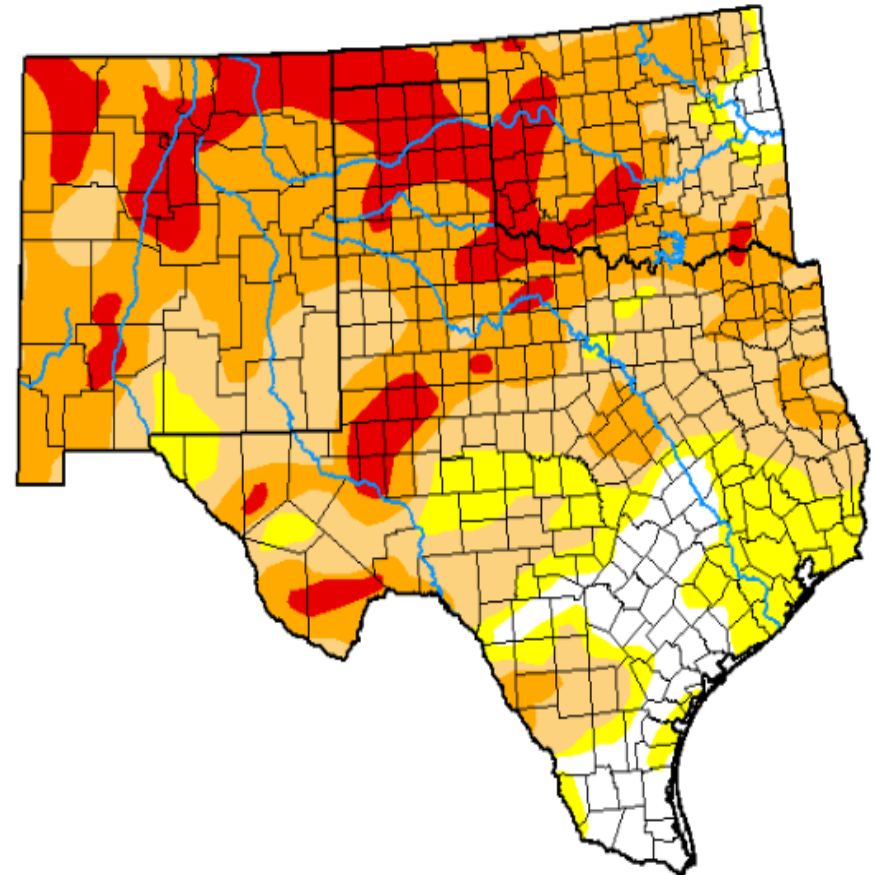
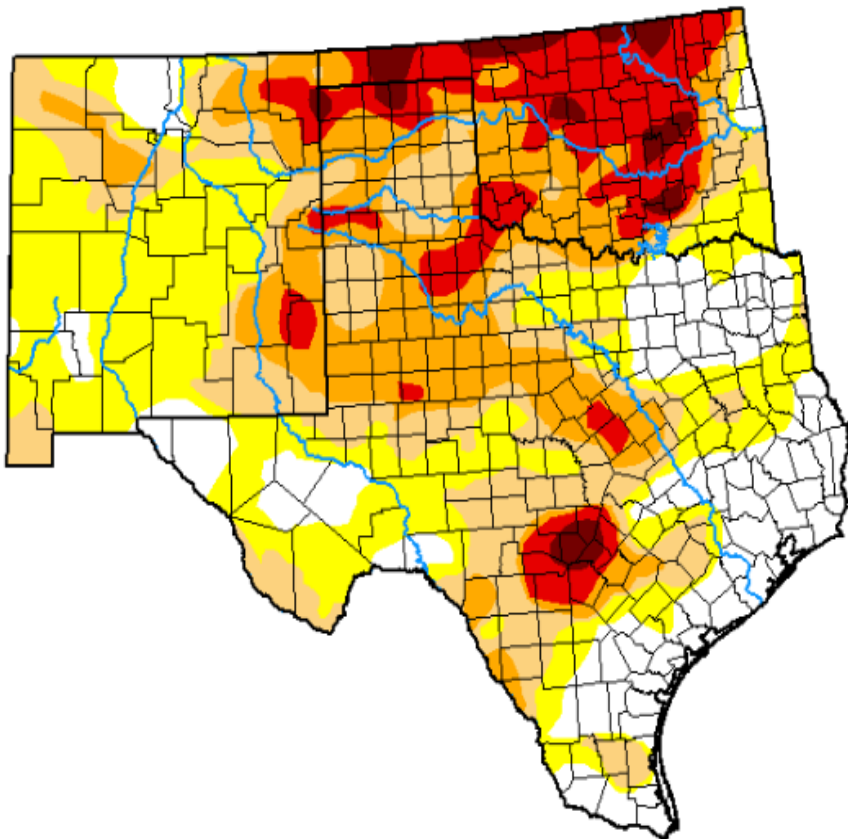


Beginning and end of year drought conditions for Texas and New Mexico

- Abnormally Dry – D0
- Moderate Drought – D1
- Severe Drought – D2
- Extreme Drought – D3
- Exceptional – D4

December 27, 2022

December 28, 2021

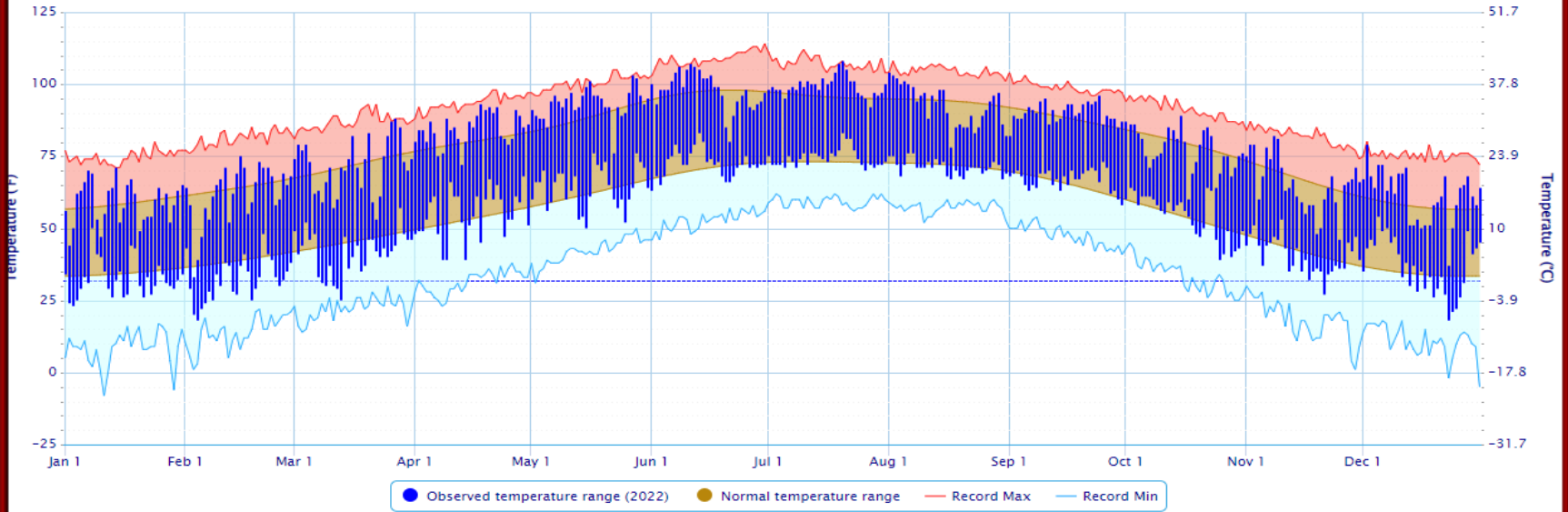


2022 Selected Individual Sites

El Paso, TX

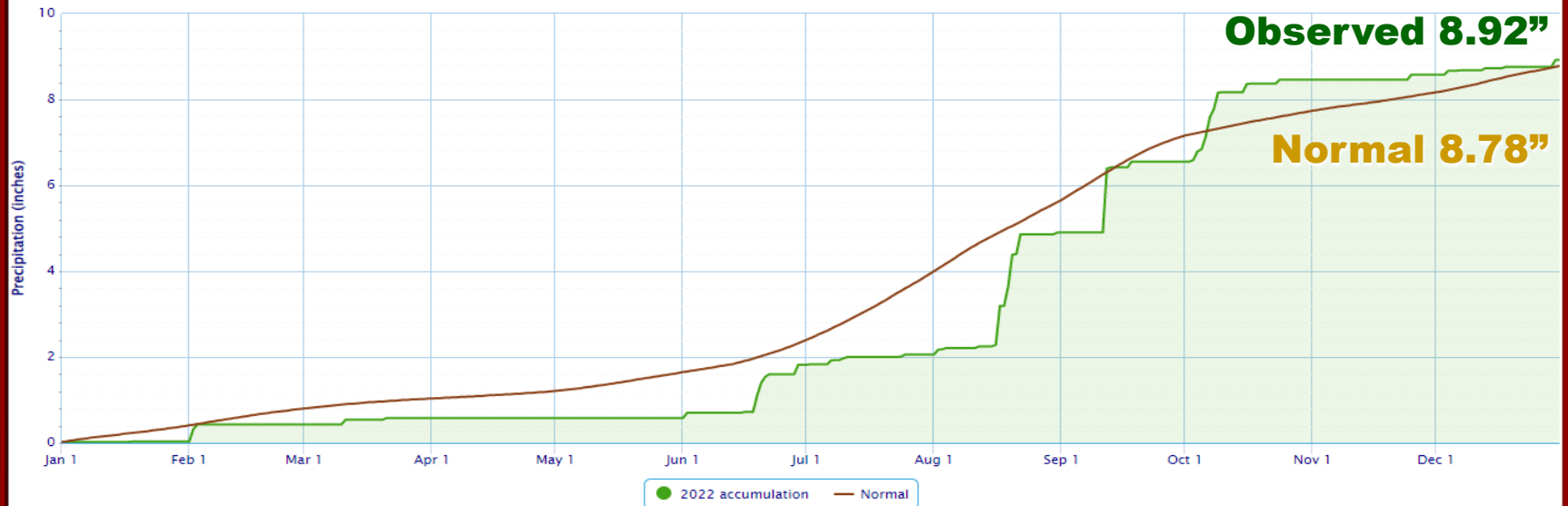
Daily Temperature Data – El Paso Area, TX (ThreadEx)

Period of Record – Max temperature: 1887-01-01 to 2022-12-31; Min temperature: 1879-01-01 to 2022-12-31. Normals period: 1991–2020. Click and drag to zoom chart.



Accumulated Precipitation – El Paso Area, TX (ThreadEx)

Click and drag to zoom to a shorter time interval; green/black diamonds represent subsequent/missing values

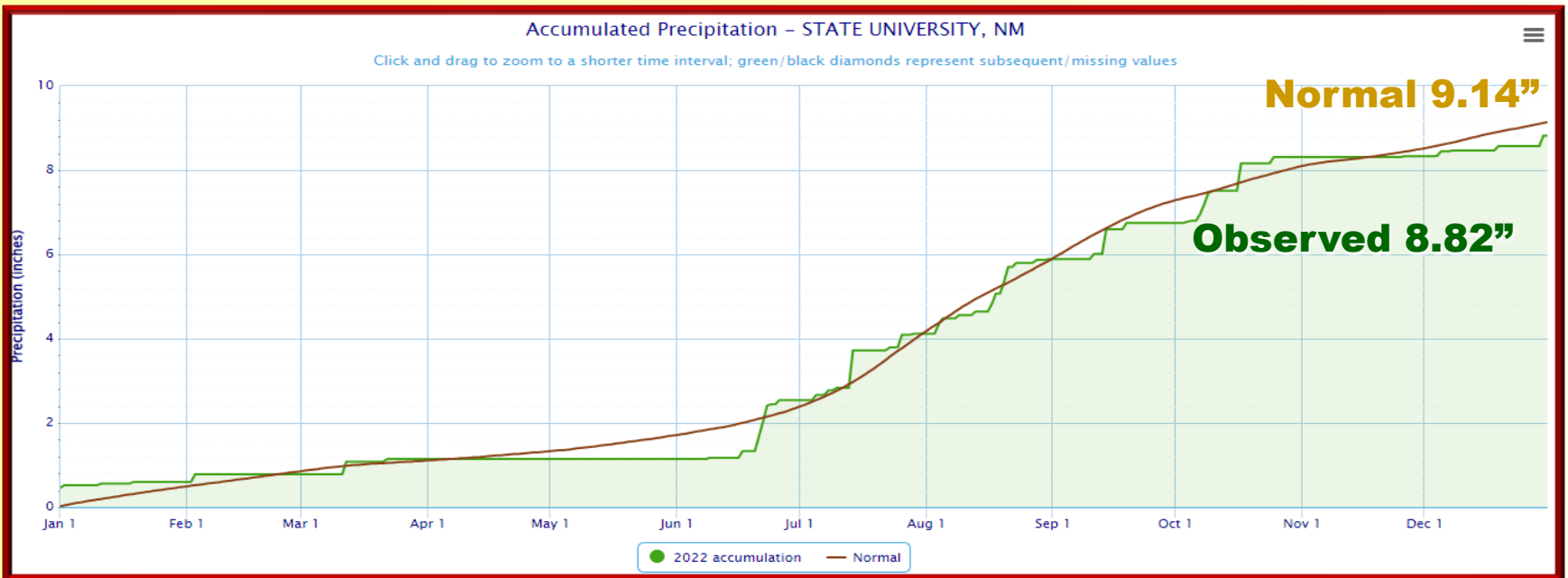
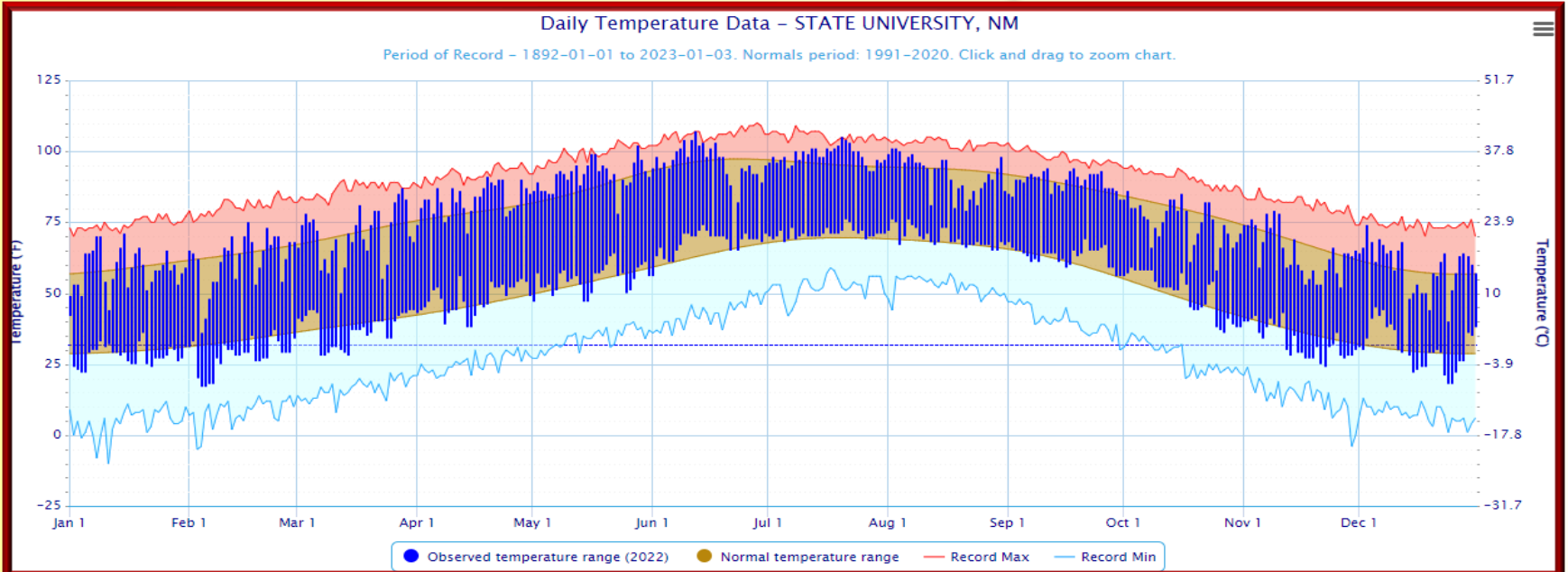


2022 El Paso Review (136 years)

El Paso Intl Airport - KELP

Month	Ave Max Temp	Highest Temp	Ave Min Temp	Lowest Temp	Ave Temp	Rank 1=Warmest 136=Coldest
Jan	59.0	71 - 14th	32.3	23 - 3rd	45.6	58
Feb	61.7	71 - 15th	32.1	18 - 4th	46.9	113
Mar	71.5	88 - 27th	41.1	25 - 13th	56.3	64
Apr	84.4	93 - 18th	54.6	39 - 14th	69.5	9
May	93.3	103 - 27th	64.0	50 - 15th	78.6	5
Jun	97.7	107 - 11th	72.2	63 - 1st	84.9	15
Jul	99.4	108 - 20th	74.3	70 - 26th	86.8	6
Aug	92.6	104 - 1st	71.1	67 - 30th	81.9	38
Sep	90.0	96 - 24th	66.8	58 - 30th	78.4	13
Oct	77.4	89 - 15th	53.9	39 - 25th	65.6	50
Nov	65.4	82 - 8th	40.2	27 - 21st	52.8	77
Dec	61.4	79 - 2nd	36.4	18 - 23rd	48.9	17

Las Cruces (University), NM

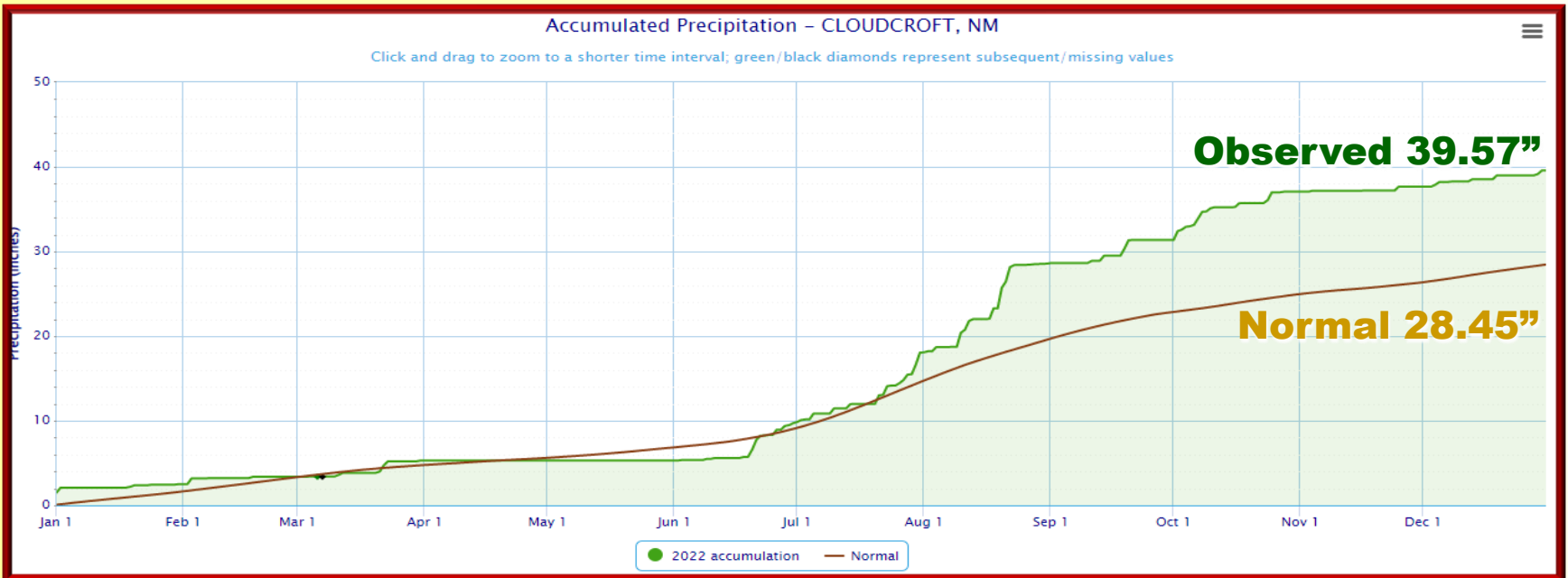
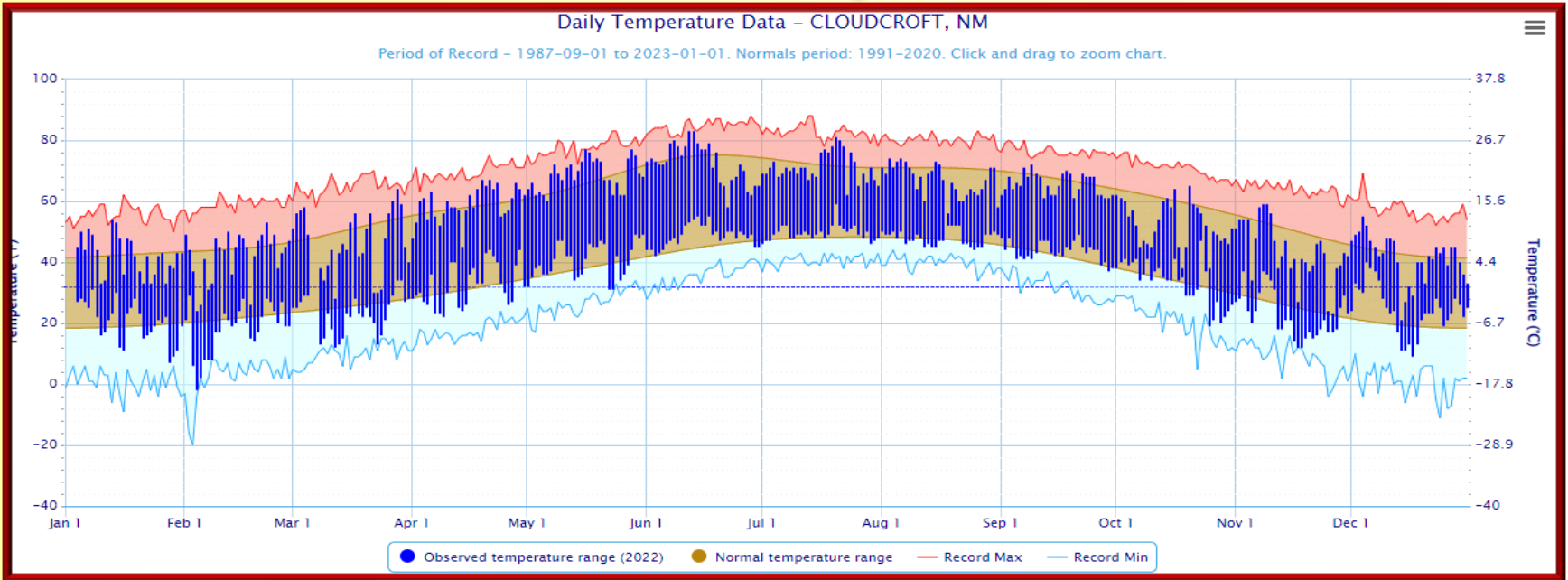


2022 Las Cruces Review (131 years)

State University (NMSU) COOP Station - STCN5

Month	Ave Max Temp	Highest Temp	Ave Min Temp	Lowest Temp	Ave Temp	Rank 1=Warmest 131=Coldest
Jan	58.8	71	28.4	22	43.6	44
Feb	61.7	75	27.8	17	44.8	98
Mar	70.5	87	37.2	28	53.8	44
Apr	82.9	91	47.8	38	65.3	5
May	91.4	102	54.9	47	73.1	7
Jun	96.6	107	67.8	56	82.2	8
Jul	98.5	105	70.9	68	84.7	3
Aug	91.9	101	69.3	65	80.6	20
Sep	89.4	84	63.1	56	76.3	8
Oct	74.9	86	49.5	36	62.2	45
Nov	64.3	79	32.8	24	48.5	87
Dec	59.2	74	30.6	18	44.9	25

Cloudcroft, NM



2022 Cloudcroft Review (35 years)

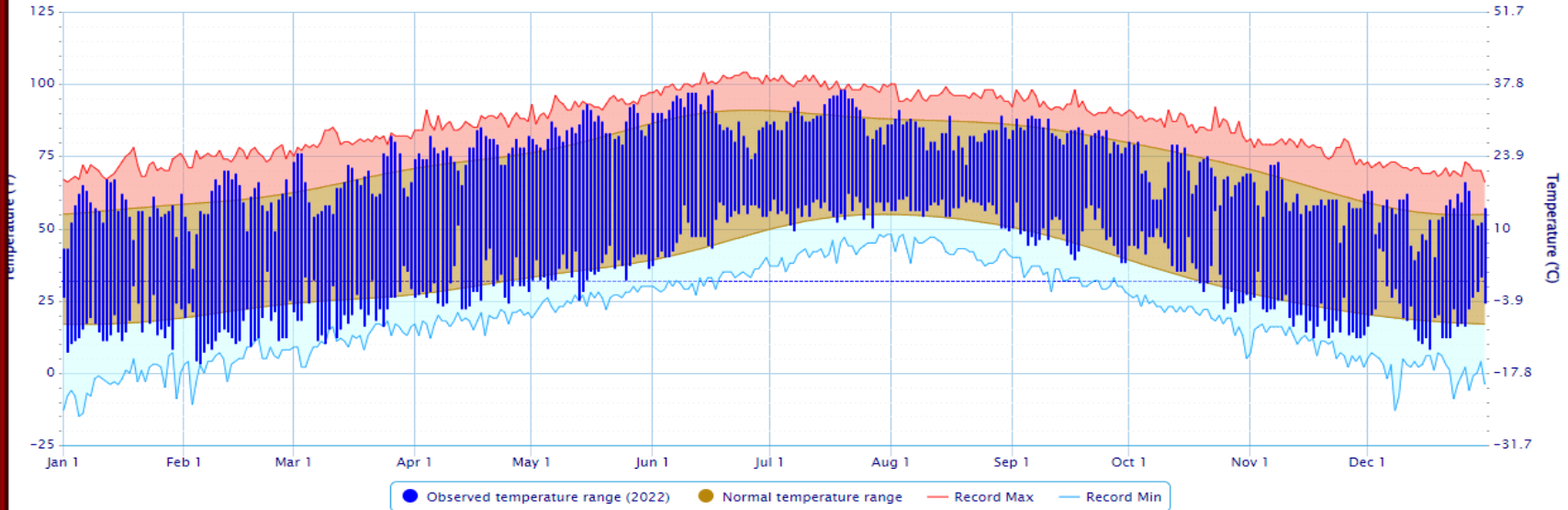
Cloudcroft COOP Station – CLDN5

Month	Ave Max Temp	Highest Temp	Ave Min Temp	Lowest Temp	Ave Temp	Rank 1=Warmest 35=Coldest
Jan	42.2	54	20.2	7	31.2	15
Feb	42.1	53	17.9	-2	30.0	28
Mar	46.6	64	22.7	12	34.6	33
Apr	59.0	67	32.3	22	45.7	11
May	68.7	77	40.3	31	54.5	6
Jun	72.4	83	48.5	42	60.5	13
Jul	71.2	81	49.5	46	60.3	13
Aug	67.0	74	47.9	44	57.4	27
Sep	65.5	72	43.5	37	54.5	17
Oct	52.4	65	33.3	19	42.9	34
Nov	43.6	59	22.5	12	33.1	33
Dec	41.6	55	24.1	9	32.9	9

Gila Hot Springs, NM

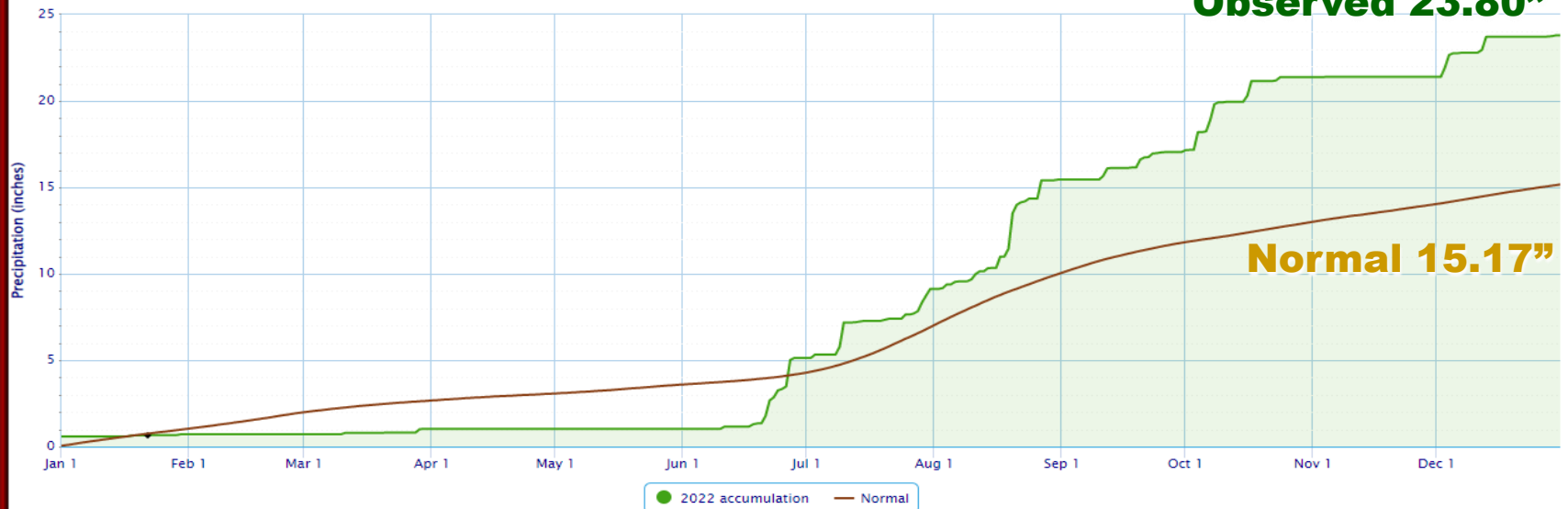
Daily Temperature Data – GILA HOT SPRINGS, NM

Period of Record – 1957-05-24 to 2022-12-31. Normals period: 1991-2020. Click and drag to zoom chart.



Accumulated Precipitation – GILA HOT SPRINGS, NM

Click and drag to zoom to a shorter time interval; green/black diamonds represent subsequent/missing values

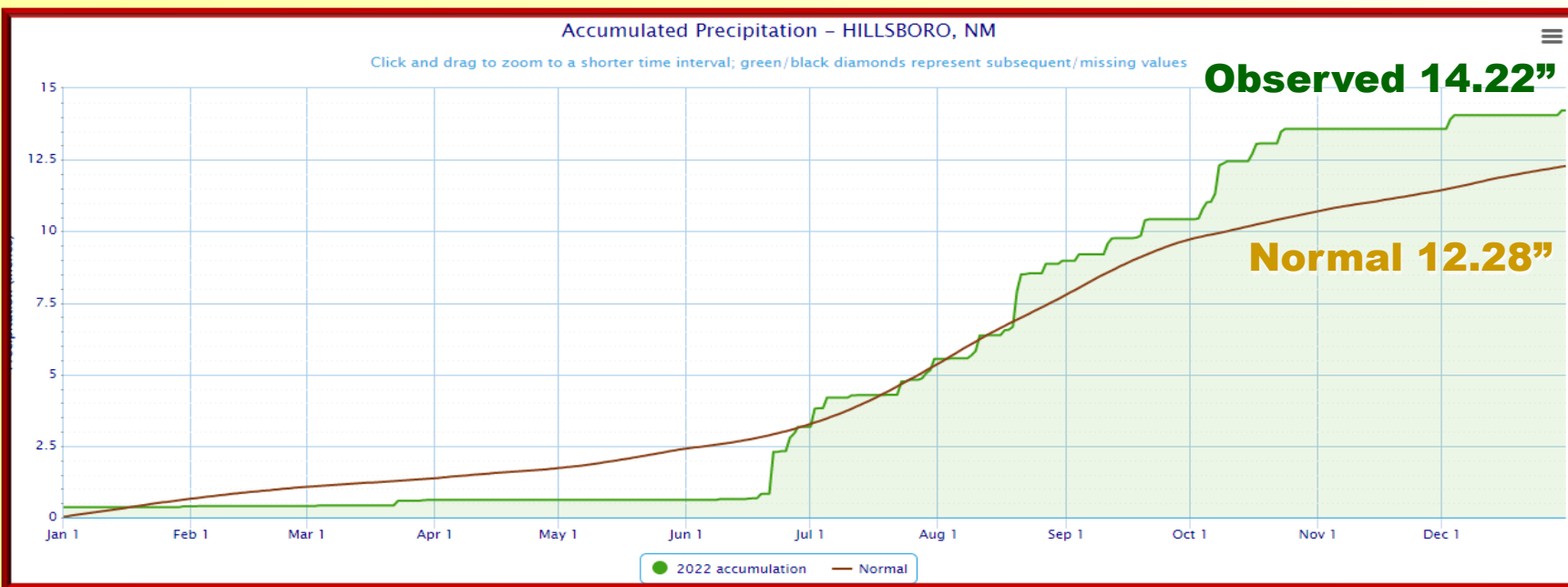
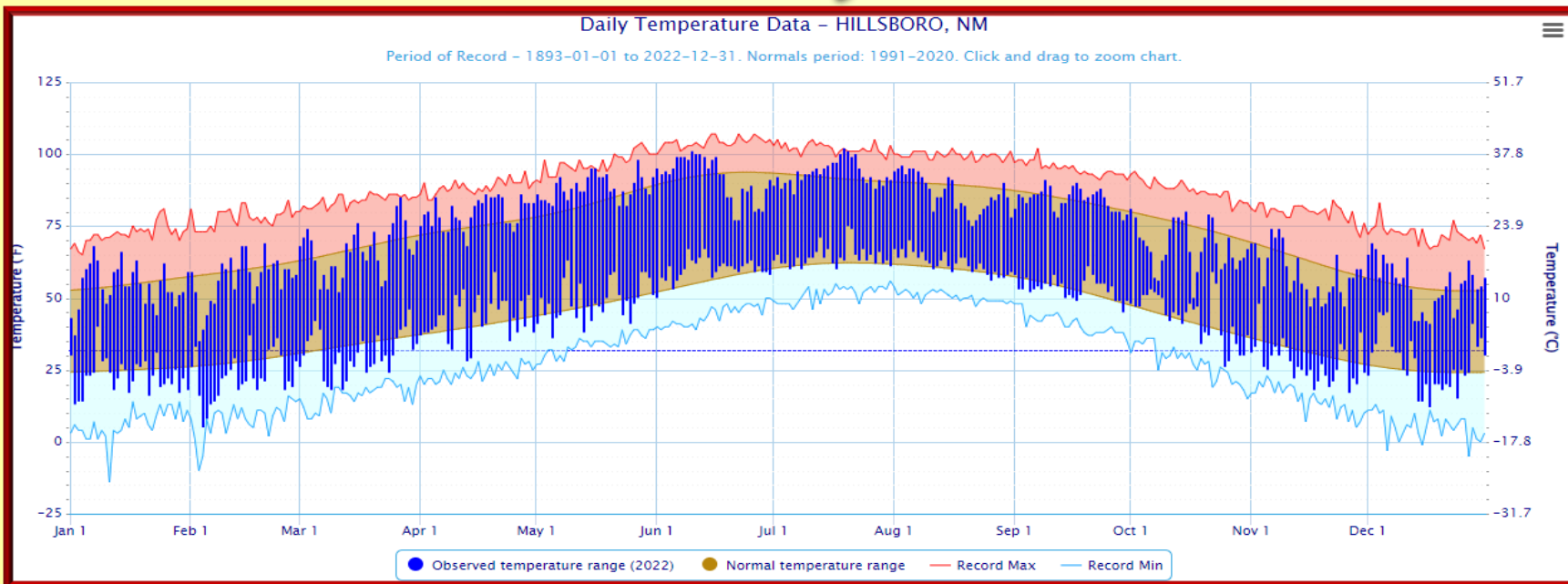


2022 Gila Hot Springs Review (66 years)

Gila Hot Springs COOP Station – GHSN5

Month	Ave Max Temp	Highest Temp	Ave Min Temp	Lowest Temp	Ave Temp	Rank 1=Warmest 66=Coldest
Jan	56.8	67	16.1	7	36.4	35
Feb	59.3	70	14.6	3	36.9	56
Mar	66.4	82	22.1	10	44.2	37
Apr	77.0	85	29.7	22	53.3	11
May	84.8	93	35.8	25	60.3	8
Jun	88.6	98	50.0	37	69.3	9
Jul	89.3	98	56.2	49	72.7	12
Aug	83.1	91	56.8	49	69.9	24
Sep	83.2	89	47.8	38	65.5	12
Oct	69.5	80	37.1	21	53.3	43
Nov	60.0	73	19.2	12	39.6	62
Dec	54.7	66	20.9	8	37.8	21

Hillsboro, NM

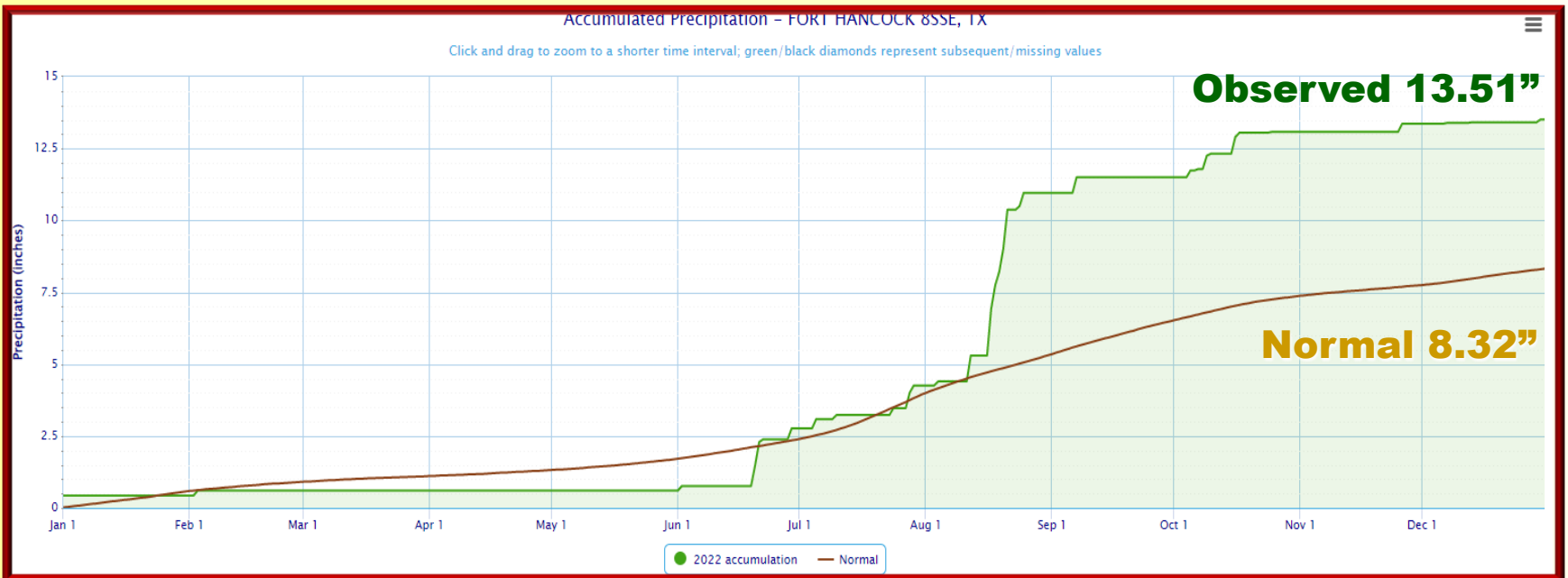
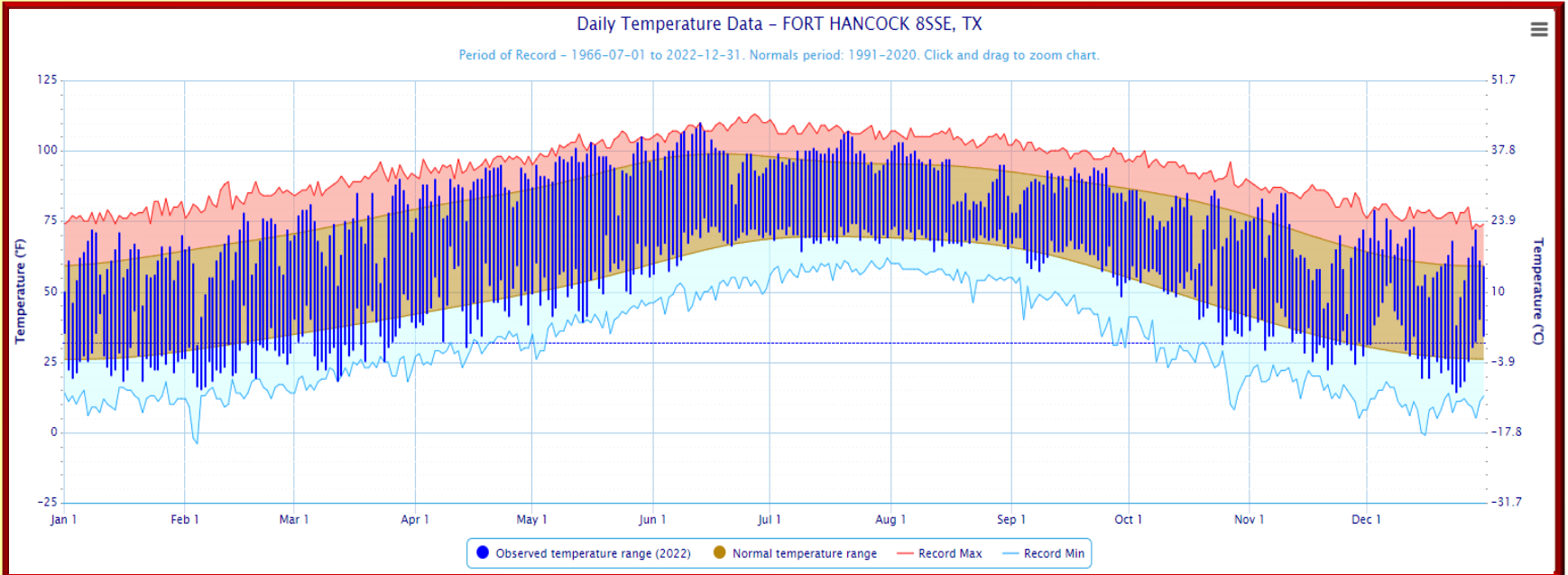


2022 Hillsboro Review (69 years)

Hillsboro COOP Station - HLLN5

Month	Ave Max Temp	Highest Temp	Ave Min Temp	Lowest Temp	Ave Temp	Rank 1=Warmest 69=Coldest
Jan	54.3	68	22.8	13	38.5	43
Feb	53.1	69	22.4	5	39.4	65
Mar	66.5	85	30.2	18	48.4	52
Apr	79.5	86	42.5	28	61.0	8
May	88.4	98	48.8	36	68.6	6
Jun	91.7	101	60.0	50	75.9	21
Jul	93.4	102	64.2	60	78.8	7
Aug	86.4	96	61.9	56	74.1	32
Sep	84.3	91	53.3	45	68.8	30
Oct	68.1	81	43.1	26	55.6	63
Nov	58.6	74	27.2	17	42.9	64
Dec	54.6	69	27.0	12	40.8	25

Ft Hancock, TX



2022 Fort Hancock Review (69 years)

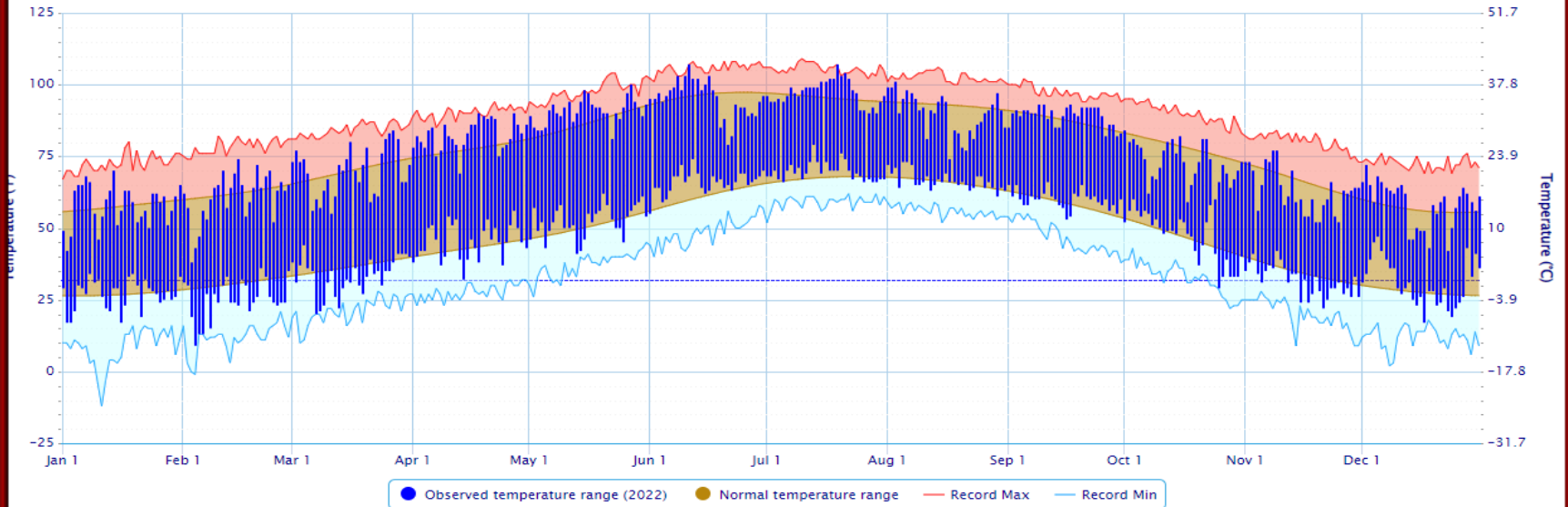
Fort Hancock COOP Station - FHAT2

Month	Ave Max Temp	Highest Temp	Ave Min Temp	Lowest Temp	Ave Temp	Rank 1=Warmest 69=Coldest
Jan	60.3	72	25.9	18	43.1	24
Feb	63.1	78	25.5	15	44.3	46
Mar	73.4	90	33.0	18	53.2	39
Apr	86.9	95	45.9	30	66.4	5
May	95.6	105	53.2	39	74.4	5
Jun	99.0	110	67.9	56	83.5	5
Jul	98.8	107	69.7	64	84.2	6
Aug	91.6	103	68.7	64	80.1	17
Sep	88.3	94	62.0	48	75.2	16
Oct	76.9	86	48.4	31	62.6	37
Nov	66.1	85	33.3	22	49.7	42
Dec	62.4	79	30.3	14	46.4	9

Deming, NM

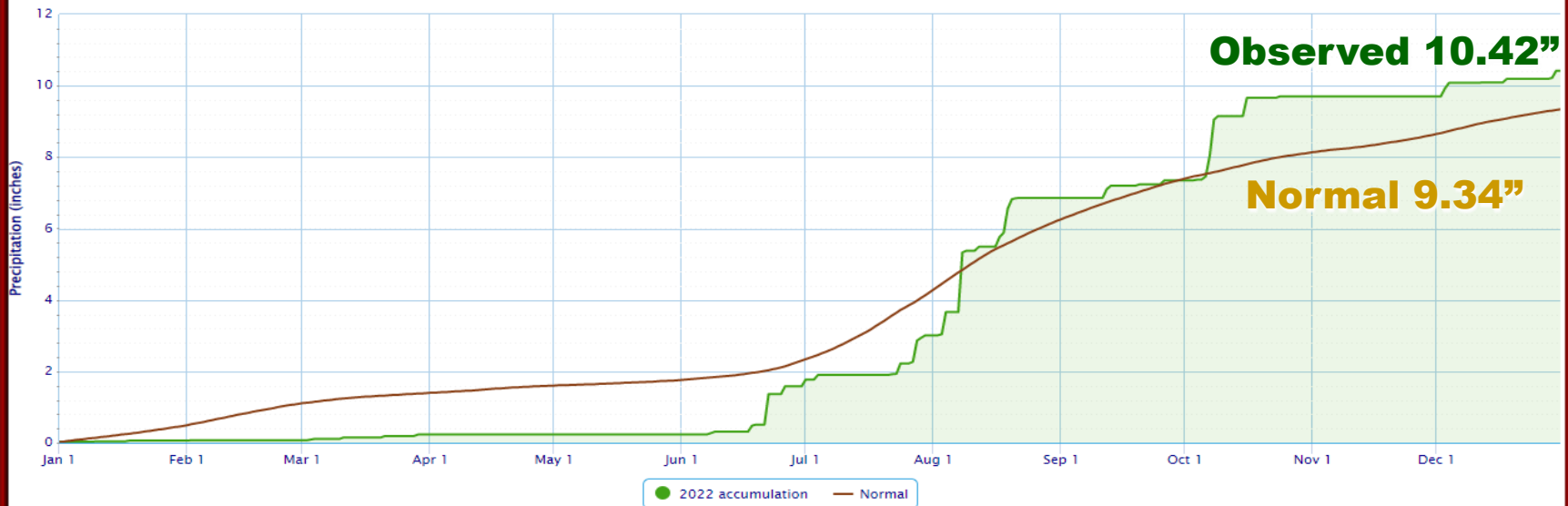
Daily Temperature Data – DEMING MUNICIPAL AP, NM

Period of Record – Max temperature: 1961–04–07 to 2022–12–31; Min temperature: 1961–04–08 to 2022–12–31. Normals period: 1991–2020. Click and drag to zoom chart.

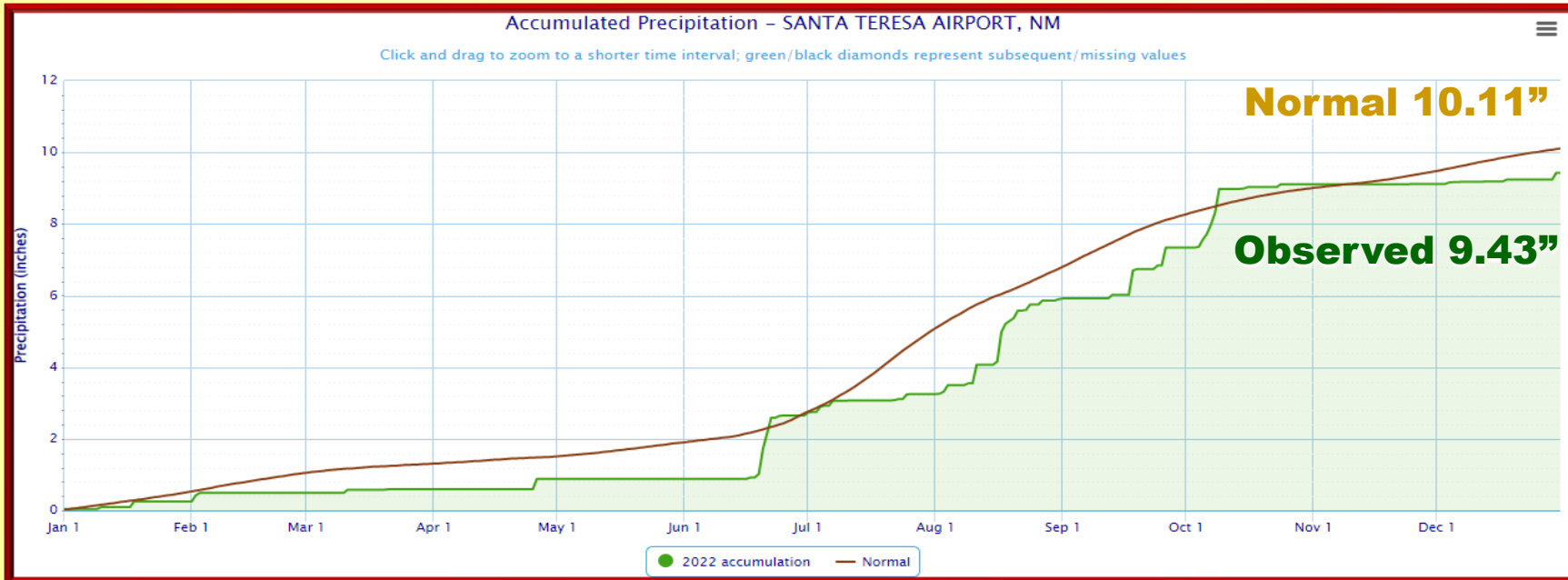
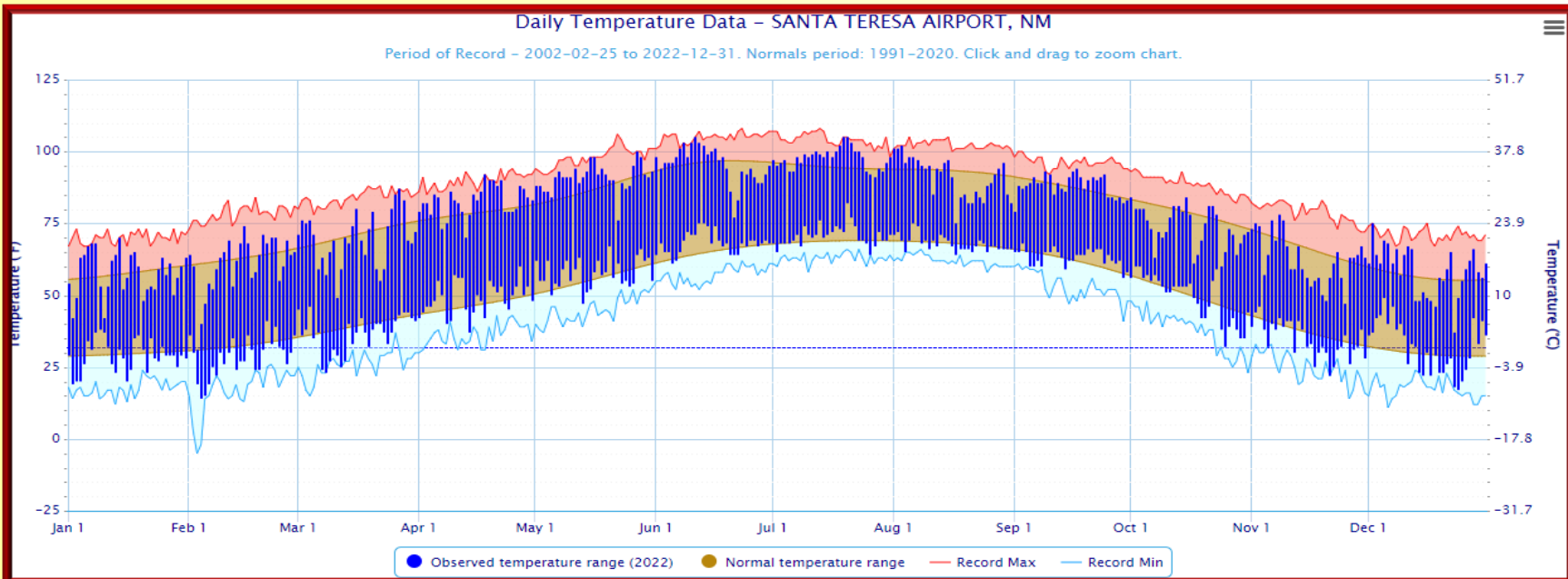


Accumulated Precipitation – DEMING MUNICIPAL AP, NM

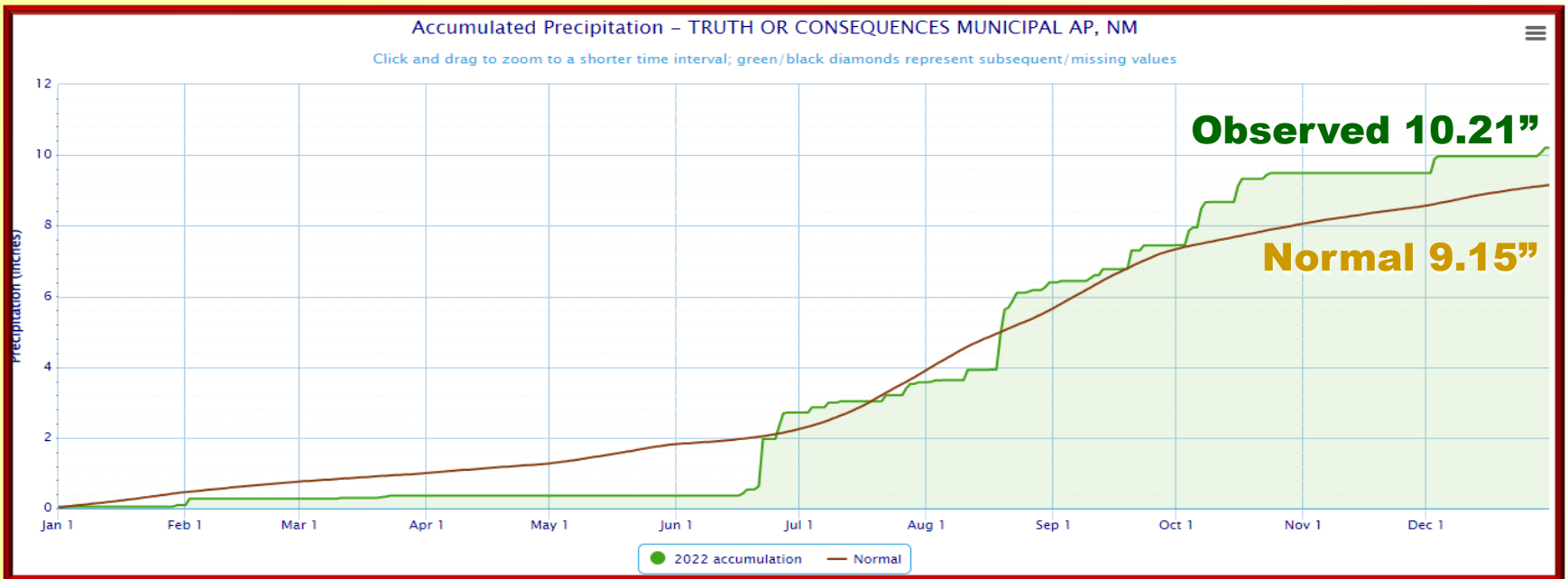
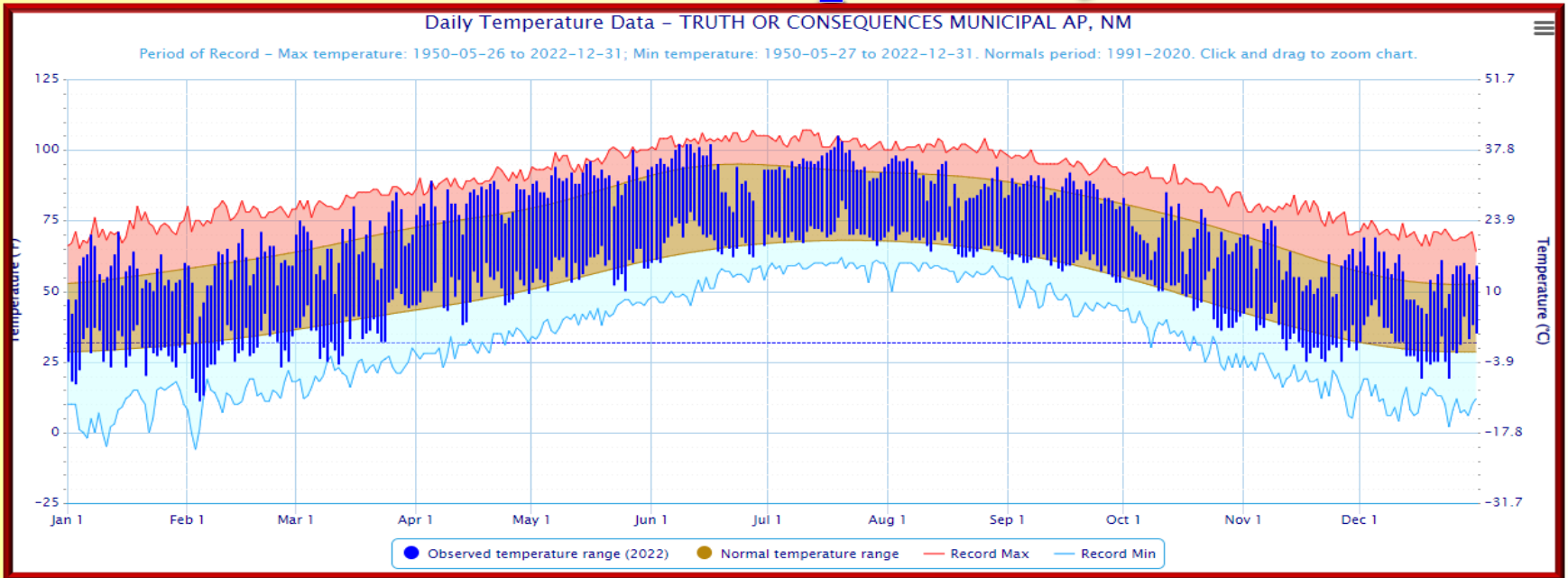
Click and drag to zoom to a shorter time interval; green/black diamonds represent subsequent/missing values



Santa Teresa, NM



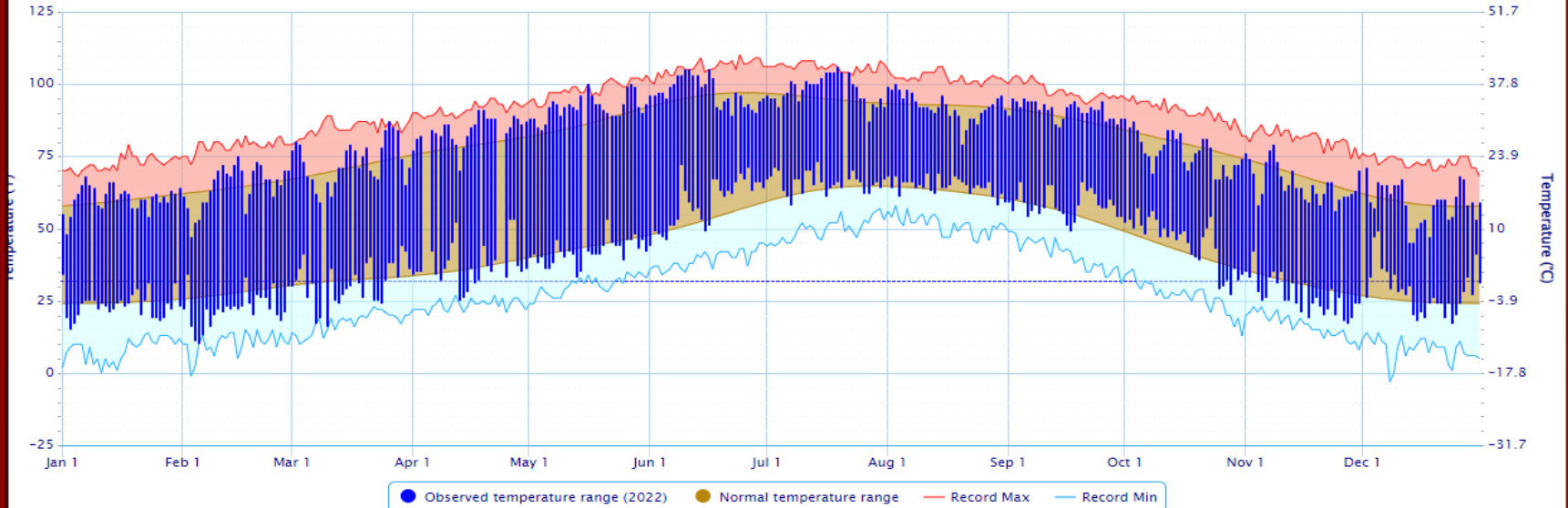
Truth Or Consequences, NM



Redrock, NM

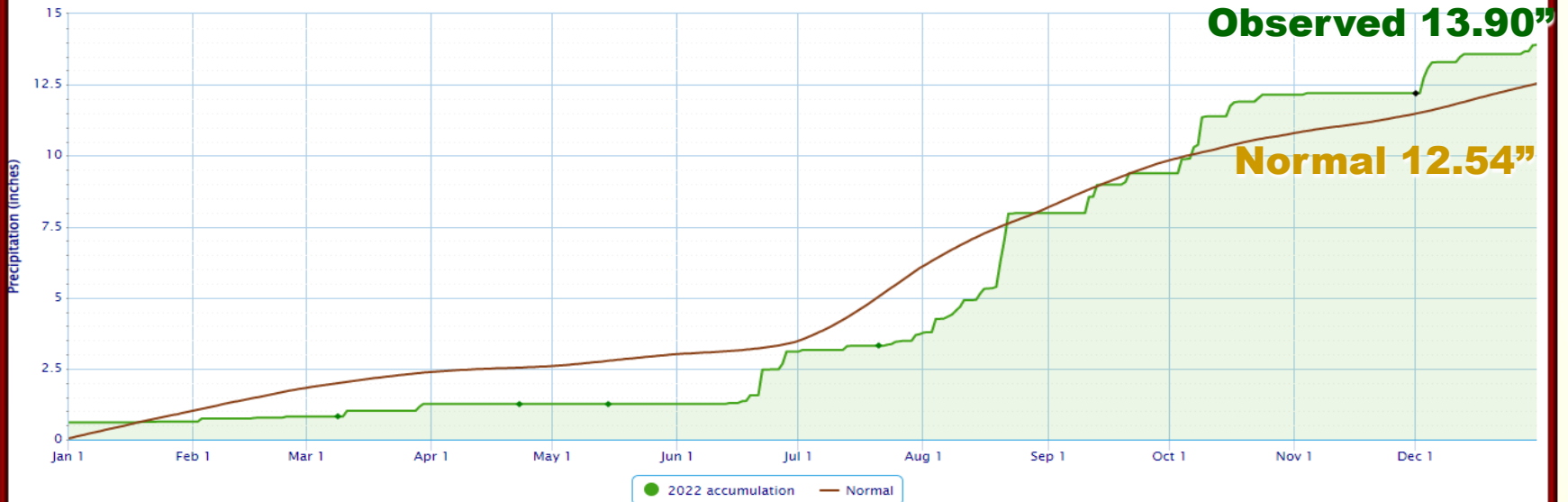
Daily Temperature Data – REDROCK 1 NNE, NM

Period of Record – 1958-02-01 to 2022-12-31. Normals period: 1991-2020. Click and drag to zoom chart.



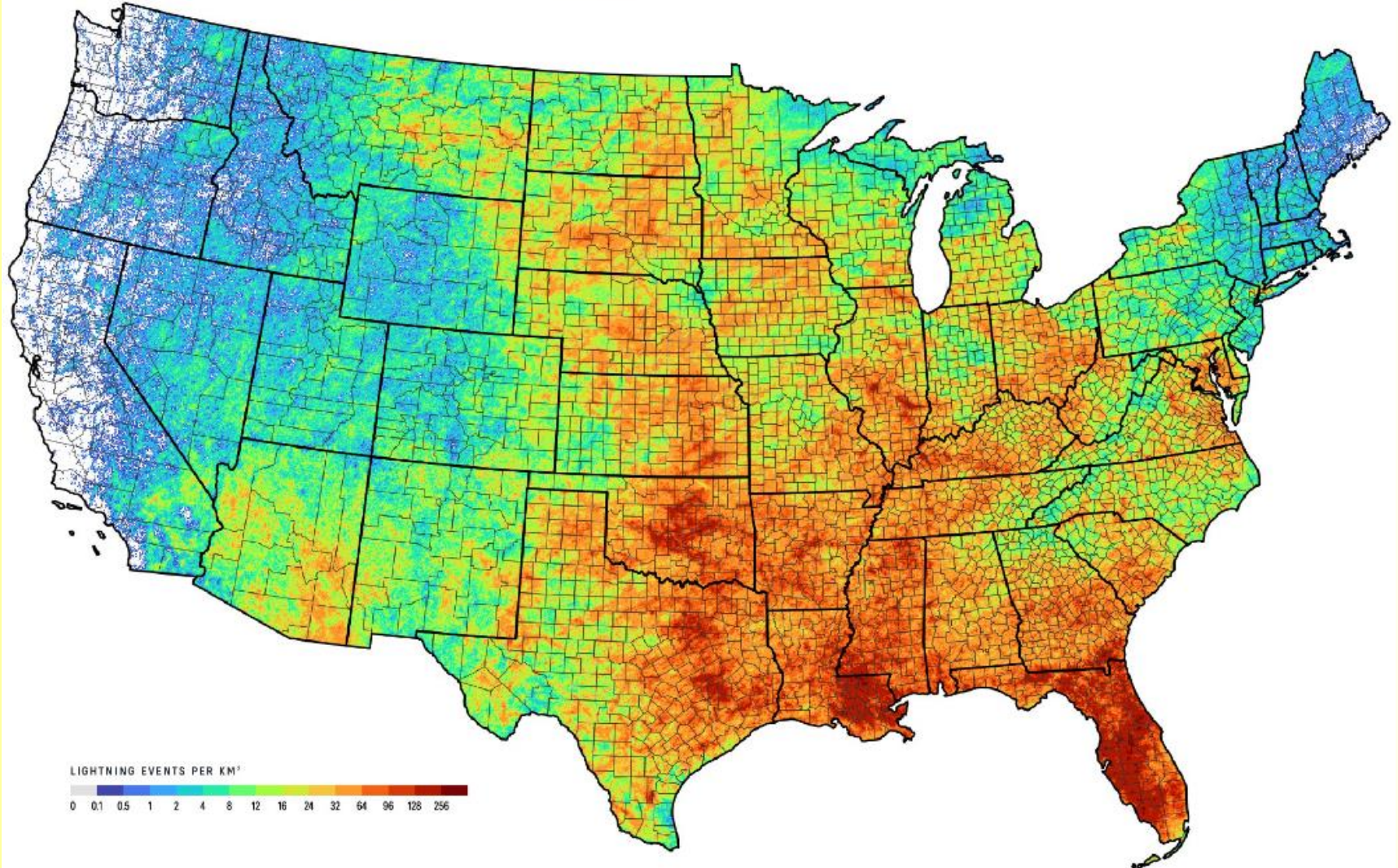
Accumulated Precipitation – REDROCK 1 NNE, NM

Click and drag to zoom to a shorter time interval; green/black diamonds represent subsequent/missing values



Total Lightning Density for 2022

Total lightning density map 2022



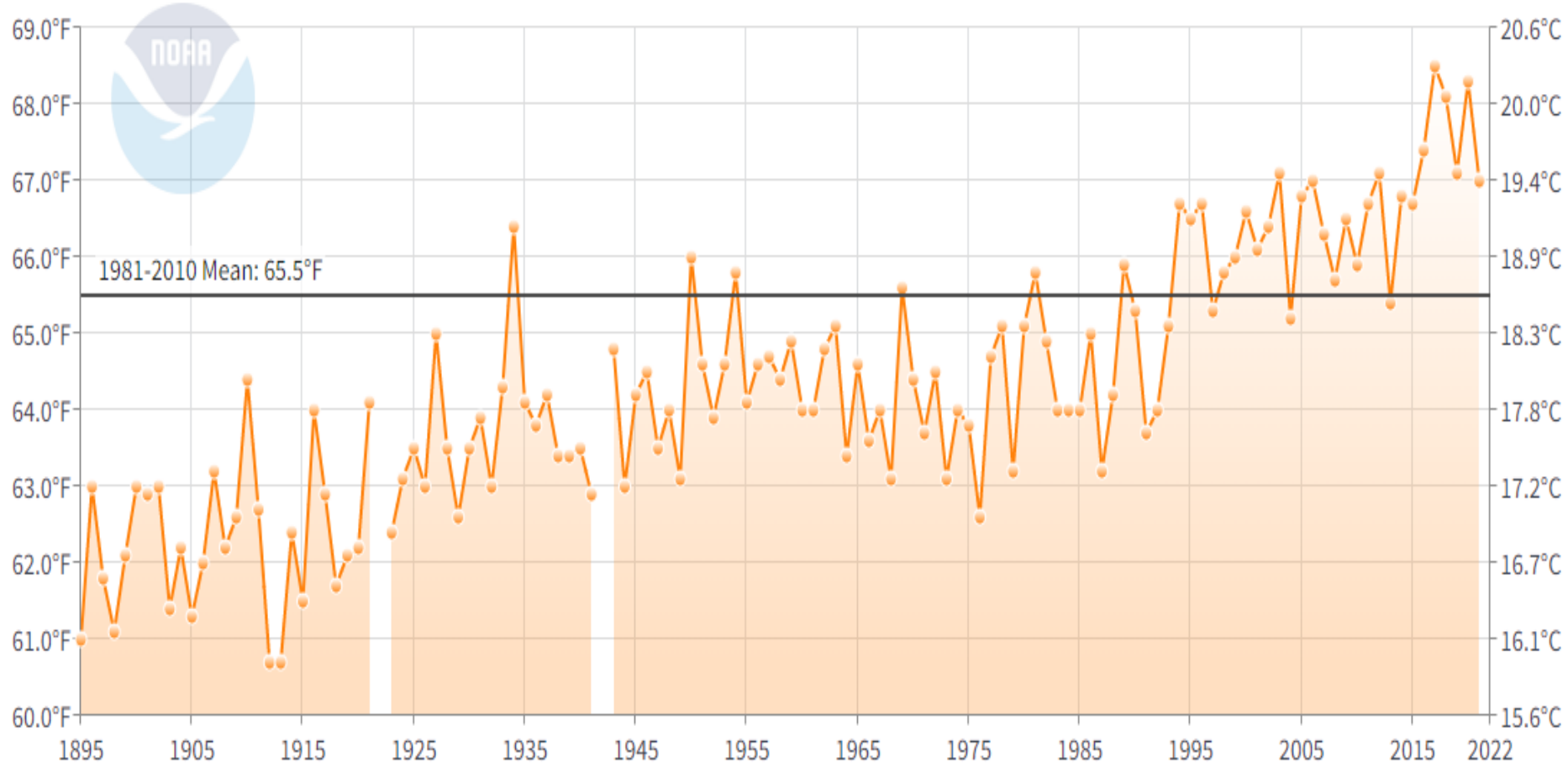
LIGHTNING EVENTS PER KM²

0 0.1 0.5 1 2 4 8 12 16 24 32 64 96 128 256

El Paso Average Annual Temperatures 1895-2022

El Paso, Texas Average Temperature

January-December



El Paso Weather Highlights 2022

1991-2020 normals in parenthesis

Highest Temperature	108 – July 20
Lowest Temperature	18 – Feb 4
Greatest Daily Precipitation	1.49 – Sep 12
Greatest Daily Snowfall	1.6” - Feb 2
Wettest Month	2.84” - Aug
Driest Month	0.00” – April, May
Highest Peak Wind	65 mph – Dec 12
Last Freeze-Spring	Mar 13
First Freeze-Fall	November 17
Heating Degree Days (Normal)	2309(2460)
Cooling Degree Days (Normal)	2936 (2297)

El Paso Weather Highlights - All Time

Highest Temperature	114 on June 30, 1994
Lowest Temperature	-8 on January 11, 1962
Greatest Daily Precipitation	6.50" on July 9, 1881
Greatest Daily Snowfall	14.5 on Dec 13, 1987
Wettest Month	8.18" July 1881
Driest Month	0.00" Numerous months
Highest Peak Wind	84 mph on March 26, 2010
Latest Last Freeze-Spring	May 2, 1967
Earliest Last Freeze-Spring	January 28, 1925
Latest First Freeze-Fall	December 20, 1939 & 2021
Earliest First Freeze-Fall	October 16, 1880
Season Heating Degree Days	3256 in 1976-1977
Annual Cooling Degree Days	3311 in 2020

El Paso Summer Heat

Consecutive Days at or Above 100 Deg

Rank	Number of Days	Ending Date
1	23	July 15, 1994
2	21	June 30, 1980
3	18	July 20, 2020
4	16	July 18, 2016
5	14	June 18, 1994
5	14	August 6, 1980
5	14	June 27, 1978
8	12	July 8 , 2005
8	12	June 30, 1998
10	11	June 29, 2013
10	11	July 1, 1979
10	11	June 24, 1960

El Paso Summer Heat

Number of Days Each Summer at or Above 100 Deg
(30 Year Average=28 days)

Year	Days	Year	Days	Year	Days
2022	20	2011	50	2000	13
2021	20	2010	30	1999	8
2020	57	2009	19	1998	18
2019	47	2008	15	1997	17
2018	46	2007	16	1996	11
2017	23	2006	18	1995	11
2016	38	2005	36	1994	62
2015	18	2004	16	1993	25
2014	30	2003	18	1992	26
2013	26	2002	32	1991	11
2012	28	2001	16	1990	18

El Paso Summer Heat

Consecutive Days at or Above 90 Deg

Rank	Number of Days	Ending Date
1	106	September 9, 2015
2	91	September 8, 2020
3	89	September 8, 2019
4	80	September 12, 1983
5	79	August 14, 1994
5	79	August 10, 1980
7	70	August 24, 1934
8	66	September 9, 1982
9	65	July 28, 2011
10	63	July 28 2014

El Paso Winter Cold Consecutive Days with Lows at or Below 32 Deg

Rank	Number of Days	Ending Date
1	27	January 23, 1944
2	25	December 30, 1960
3	23	January 24, 1925
4	20	January 29, 1987
4	20	December 30, 1985
6	19	January 22, 1967
7	18	December 27, 1966
7	18	January 12, 1893
9	17	January 8, 1954
9	17	February 2, 1897
9	17	January 13, 1881
12	16	January 29, 2001
12	16	January 27, 1898
12	16	January 15, 1886

El Paso Winter Cold Consecutive Days with Lows at or Below 20 Deg

Rank	Number of Days	Ending Date
1	6	December 19, 1985
1	6	January 9, 1971
1	6	January 13, 1967
1	6	January 25, 1963
1	6	January 17, 1963
6	5	February 5, 2011
6	5	December 20, 1996
6	5	January 13, 1962
6	5	December 27, 1953
6	5	February 3, 1951
6	5	January 31, 1948
6	5	January 10, 1913

El Paso Winter Cold Number of Days Each Year With Lows at or Below 32 Deg (30 Year Average=42 days)

Year	Days	Year	Days	Year	Days
2022	50	2011	56	2000	44
2021	29	2010	43	1999	46
2020	40	2009	37	1998	46
2019	28	2008	43	1997	56
2018	31	2007	46	1996	55
2017	21	2006	38	1995	29
2016	31	2005	29	1994	42
2015	38	2004	41	1993	39
2014	37	2003	43	1992	50
2013	57	2002	59	1991	51
2012	36	2001	67	1990	62

El Paso Drought-Consecutive Days with No Measureable Rain (Trace or less)

Rank	Number of Days	Ending Date
1	136	June 22, 1910
2	128	June 13, 2002
3	126	June 29, 1896
4	119	June 1, 2011
5	101	January 24, 2006
5	101	June 7, 1902
5	101	July 15, 1892
8	99	May 22, 1963
9	98	March 2, 1964
10	93	May 3, 1972

El Paso Drought-Consecutive Days with No Rain

Rank	Number of Days	Ending Date
1	118	May 31, 2011
2	109	May 25, 2002
3	88	December 31, 1950
4	80	May 9, 1904
5	72	December 10, 1903
6	69	May 8, 1902
7	68	June 12 1996
8	64	July 4, 1916
9	63	December 9, 1954
10	58	December 15, 2005