

# October 2022 Weather Digest





# **October 2022 Weather Summary**

**October was a tale of two different months. Though the Monsoon season ended the last couple of days of September, October's first ten days began almost as if the Monsoon never ended. A large, very stubborn upper high pressured ridge over the eastern Pacific blocked any movement through it and across the Southwest Desert. An upper low which sat in the lee of this ridge was then able to anchor over the Baja Peninsula and stream moisture over our area through this period. This resulted in a very wet stretch of weather, more reminiscent of July or August.**

**October ended up around 150-300 percent of normal for much of the area, and the bulk of this fell during the first 10 days of the month. The last two-thirds of the month then reverted back to more typical Autumn weather, with Pacific storm systems intermittently traversing the area, bringing windy conditions with isolated showers. A powerful Pacific storm on the fifteenth and sixteenth brought**

# October 2022 Weather Summary, cont'd

strong winds and widespread light showers to most of the area. A few severe thunderstorms were also seen, with small to moderate size hail reported. Another strong Pacific storm system on the twenty-third and twenty-fourth brought strong winds and the first mountain snows of the season to the area. The Gila Wilderness and Sacramento Mountains both received around 2 to 6 inches in many locations.

Looking ahead, Autumn usually hits its full stride in November. The large majority of sites have recorded their first freeze by the end of the month (of those that didn't freeze in October). Duration of daylight continues to shrink, with 10 hours, 54 minutes of light on November first, and 10 hours, 14 minutes of light on the last day of the month. Average high temperatures in El Paso decrease from 73° at the start of November to 61° at the end. For you Celestial fanatics, our November Full Moon occurs

# October 2022 Weather Summary, cont'd

**on November Eighth. This Full Moon is also known as the Beaver Moon, due to beavers finishing up and retreating to their lodges. The New Moon occurs on November 23. There is one Lunar Eclipse, occurring on November 8. Southern New Mexico/West Texas should see nearly the entire total eclipse, with the partial eclipse beginning at 209 am MST, and totality beginning at 316 am.**



**October 3 Showers near Jornada**



**October 5 El Paso Lightning**



**October 6 El Paso Storm**



**October 10 Fog Bank near  
El Paso**





**October 16 Hail Storm near  
Ft. Selden**



**October 16 Flooding in Las Cruces**



**October 16 Flooding in Las Cruces**



**W October 16 Storm near Gage, NM**





**October Fall Colors  
Sacramento Mountains**



**Oct 23 First Snow Cloudcroft**



**Oct 23 First Snow Cloudcroft**



**Oct 27 Blowing Dust Tularosa  
Basin**





**October 17 Storm near  
McKelligon Canyon El Paso**



**Oct 23 Snow at Ski Apache**



Timberon Development Council 2022-10-24 10:32:21  
**Oct 23 Snow at Timberon**



**Oct 25 Snow near Gila**





## October 27 SpaceX Rocket Flight



# **ENSO Alert System Status: La Niña Advisory in Affect**

## **ENSO Alert System**

- **El Niño or La Niña Watch:** Issued when conditions are favorable for the development of El Niño or La Niña conditions in the next six months.
- **El Niño or La Niña Advisory:** Issued when El Niño or La Niña conditions are observed and expected to continue.



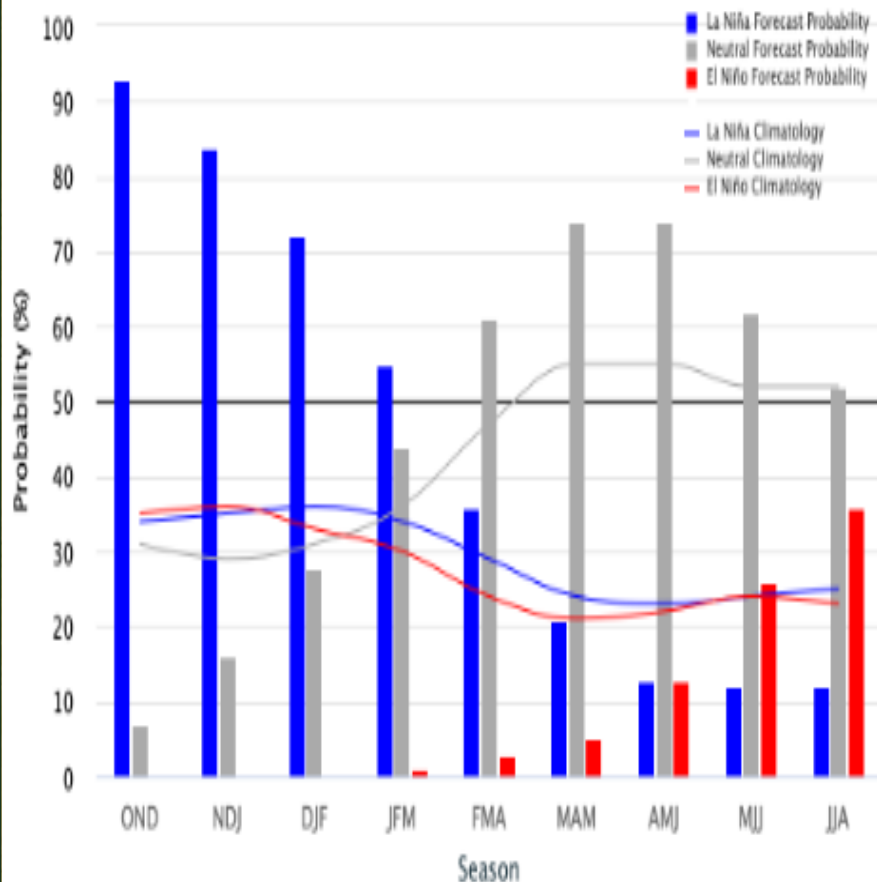
# ENSO Forecast

**ENSO is in La Niña status. Forecast shows decent chance of La Niña lasting into late winter, likely transitioning to neutral toward spring of 2023.**

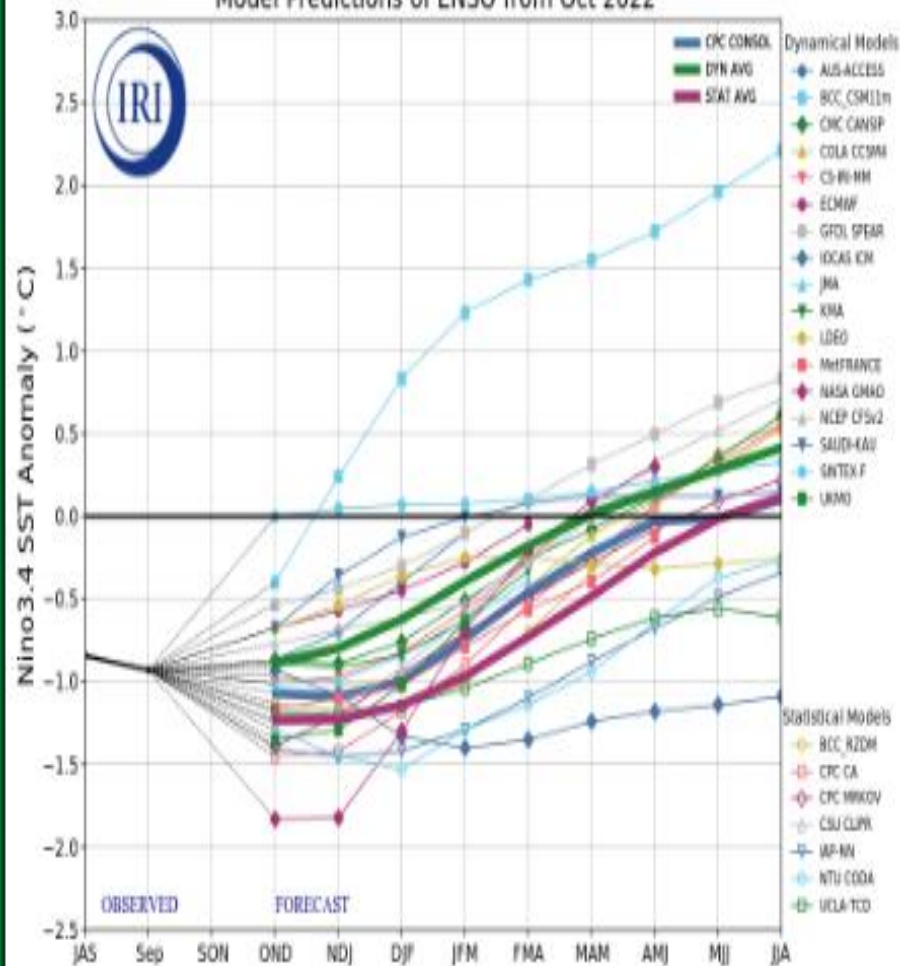
Mid-October 2022 IRI Model-Based Probabilistic ENSO Forecasts

ENSO state based on NINO3.4 SST Anomaly

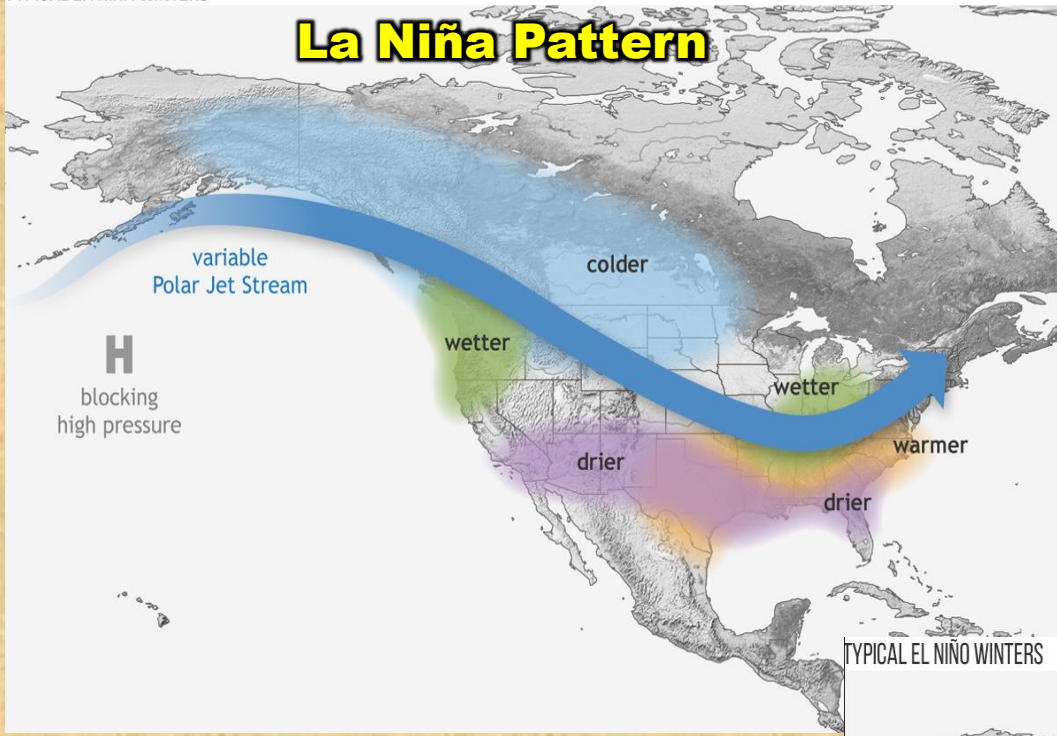
Neutral ENSO:  $-0.5^{\circ}\text{C}$  to  $0.5^{\circ}\text{C}$



Model Predictions of ENSO from Oct 2022



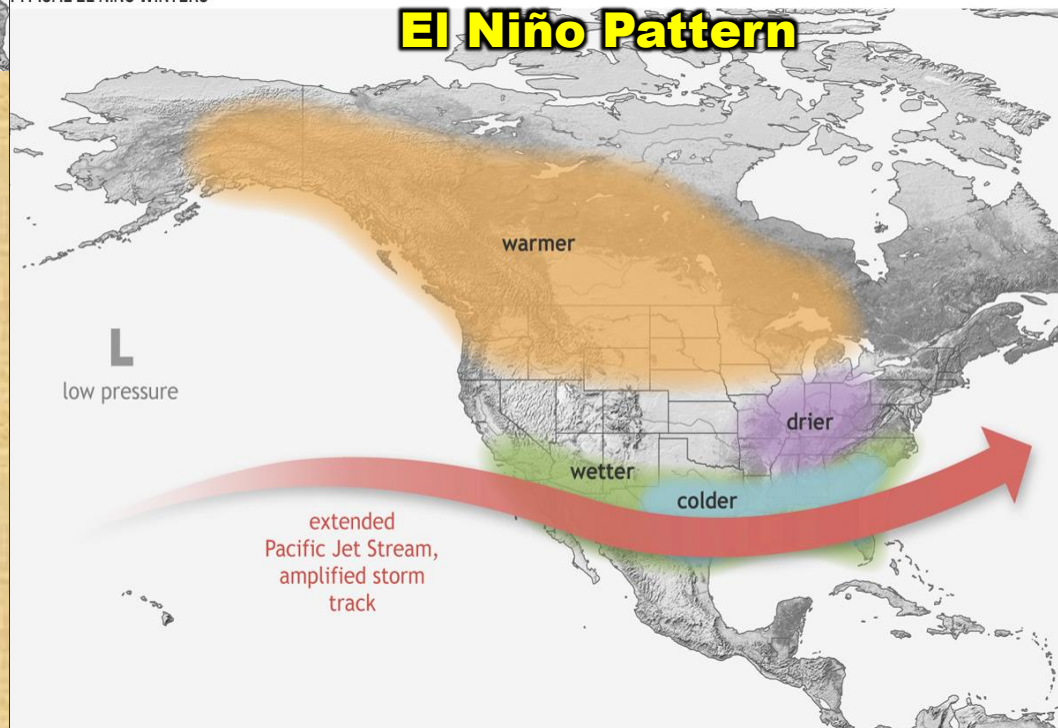
# La Niña Pattern



With a La Niña pattern, a ridge of high pressure tends to build off the west coast of the U.S., blocking most of our Pacific winter storm systems. These storms tend to end up moving across the northern Plains and down to the southeastern part of the country. Of course it is important to remember that these patterns are only what typically happens and are not guaranteed to occur.

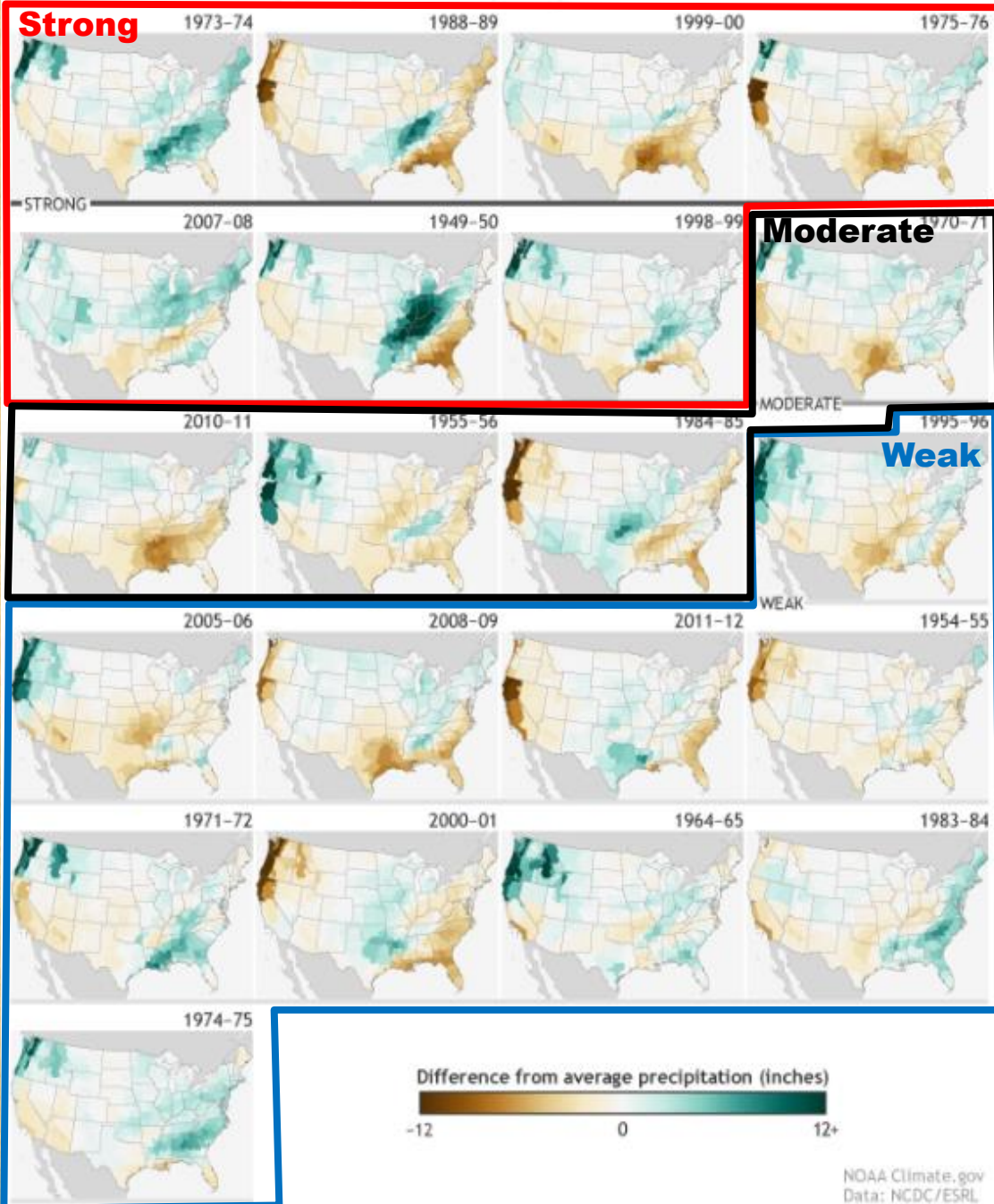
With El Niño, we often see the opposite pattern where the eastern Pacific ridge of high pressure is often weak or non-existent, allowing winter storms to sweep across the southern U.S. This typically will give the southwestern U.S. above normal precipitation.

# El Niño Pattern





Winter (December-February) precipitation during strong, moderate, and weak La Niñas since 1950

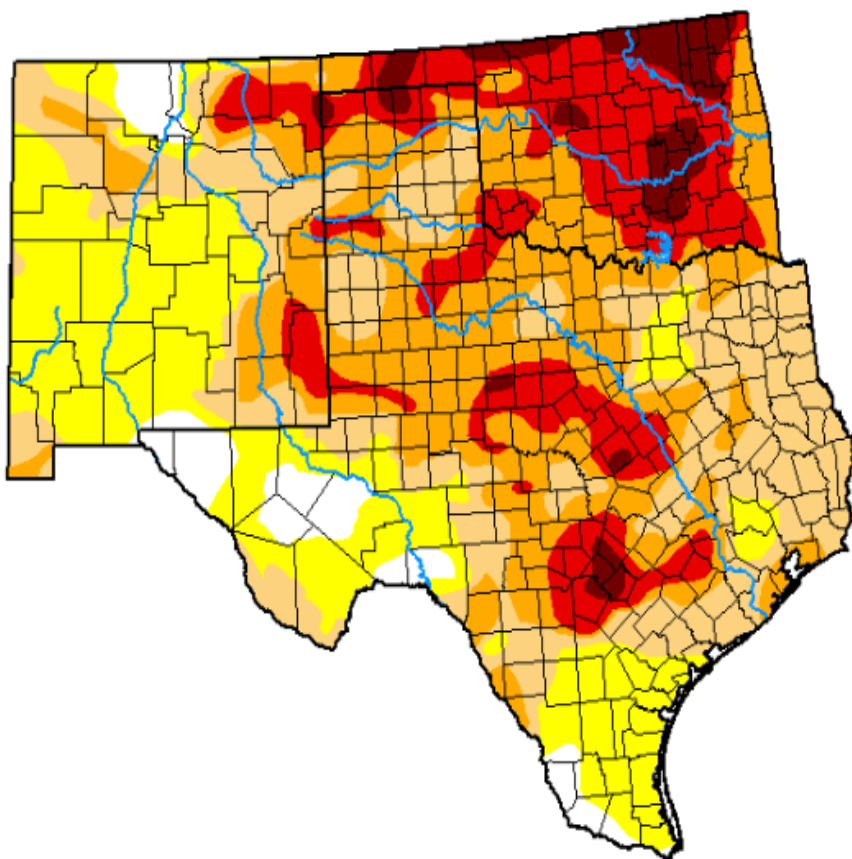


Examples of the numerous La Niña winters since 1950. These maps depict the departure from normal precipitation amounts for a winter.

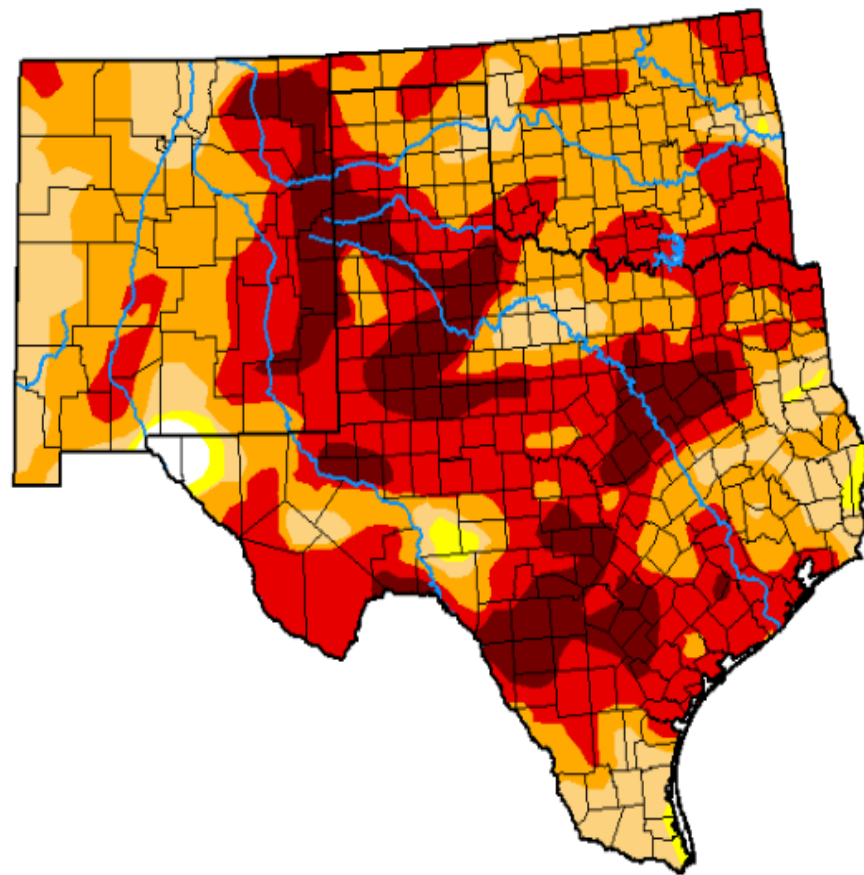
# Current drought conditions and 3 month change

- Abnormally Dry – D0
- Moderate Drought – D1
- Severe Drought – D2
- Extreme Drought – D3
- Exceptional – D4

**October 25, 2022**



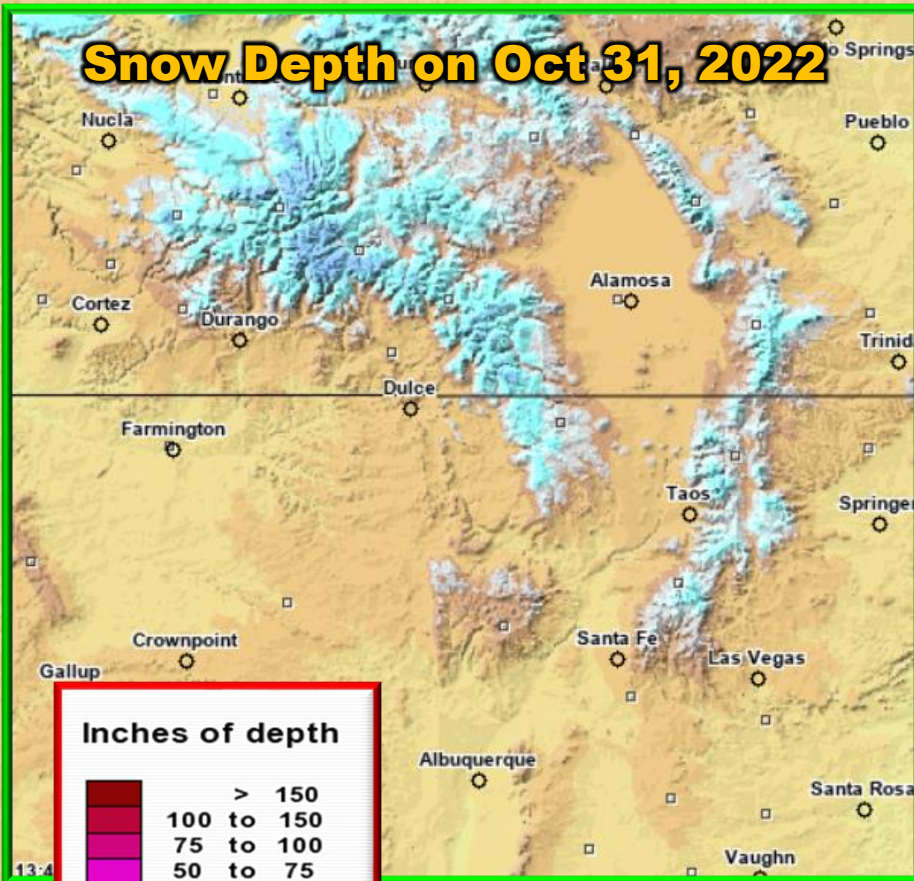
**July 26, 2022**



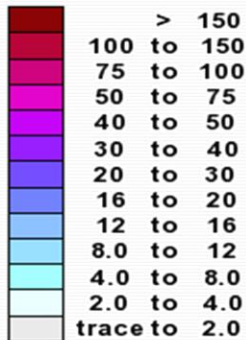


# Snow Data Upper Rio Grand Basin as of Oct 31, 2022

## Snow Depth on Oct 31, 2022

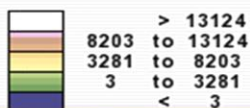


### Inches of depth

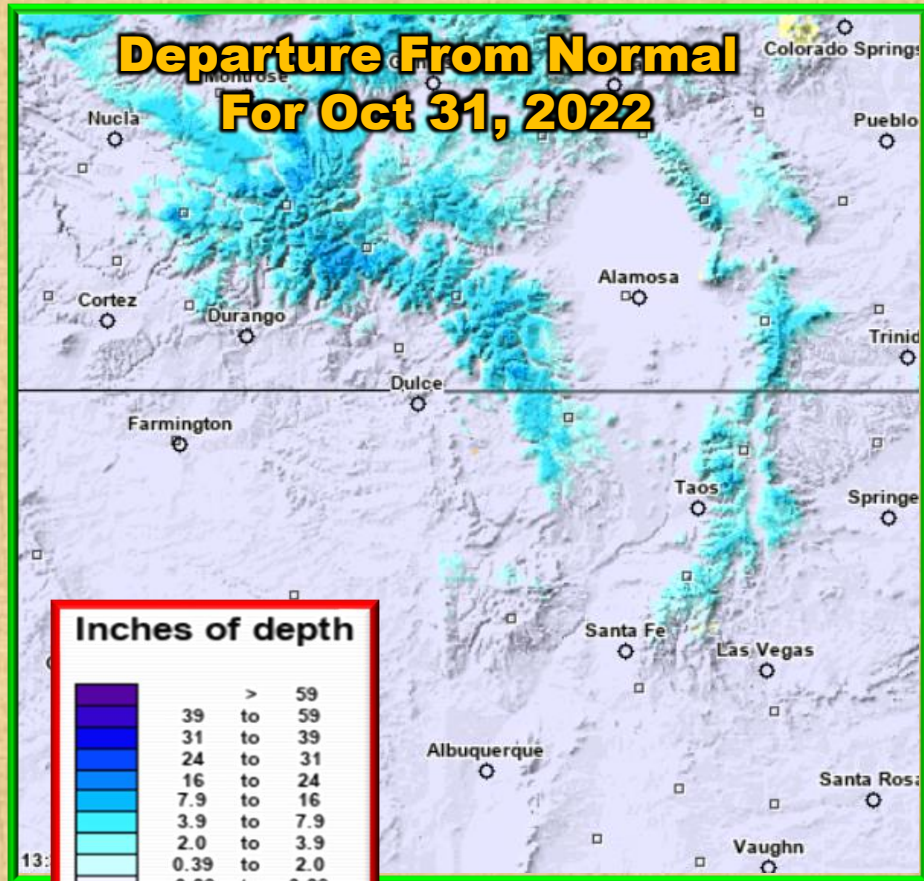


Not Estimated

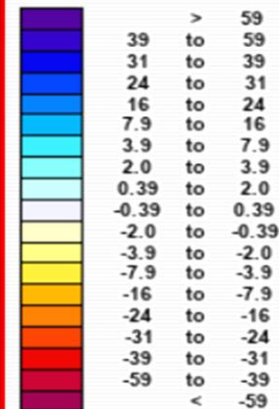
### Elevation in feet



## Departure From Normal For Oct 31, 2022

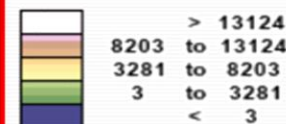


### Inches of depth



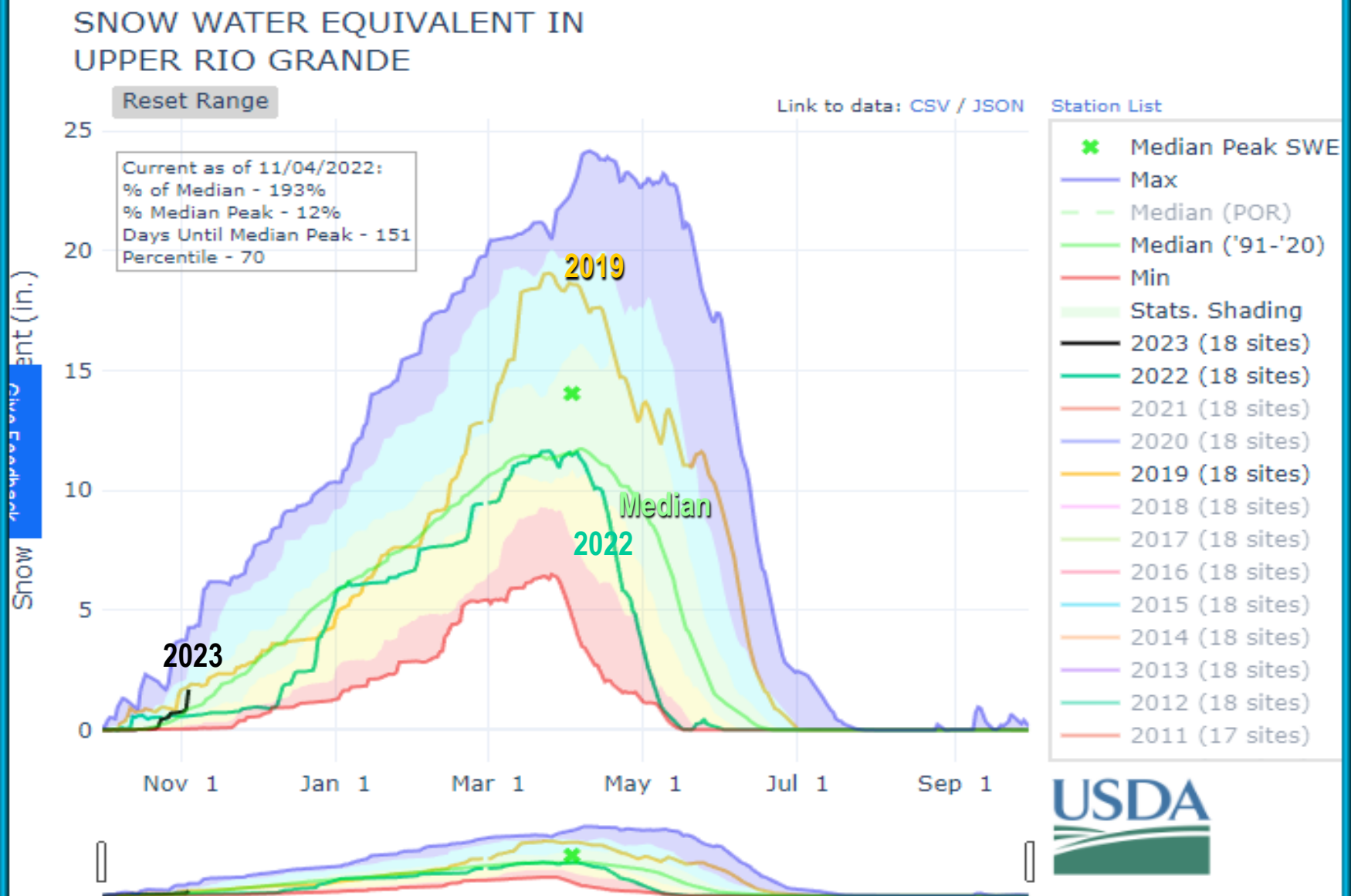
Not Estimated

### Elevation in feet



# Snow Water Equivalent as of Oct 31, 2022

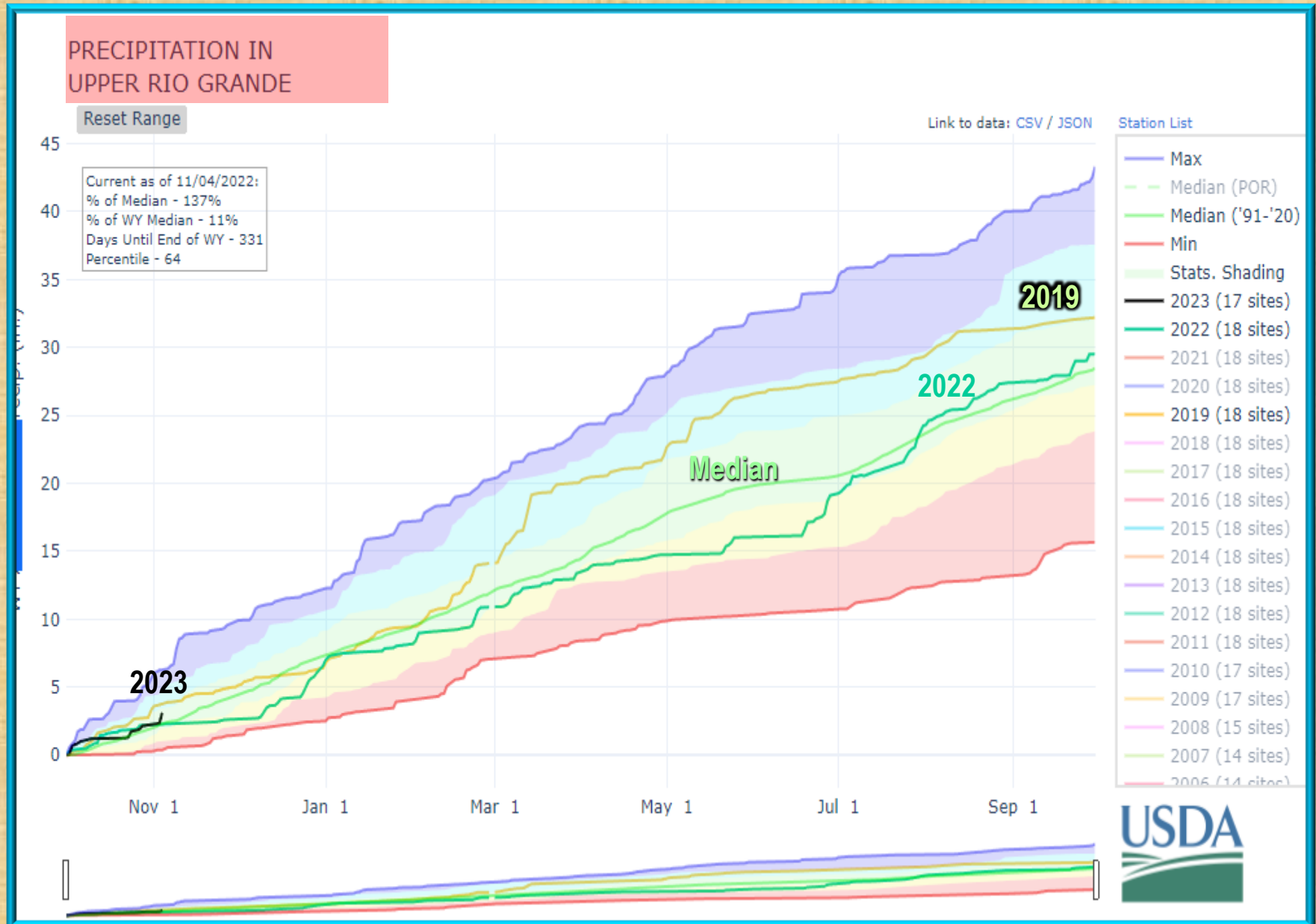
## Compare to last few years and average values





# Precipitation for the Water Year Oct 1 – Oct 31, 2022

## Compare to last few years and average values

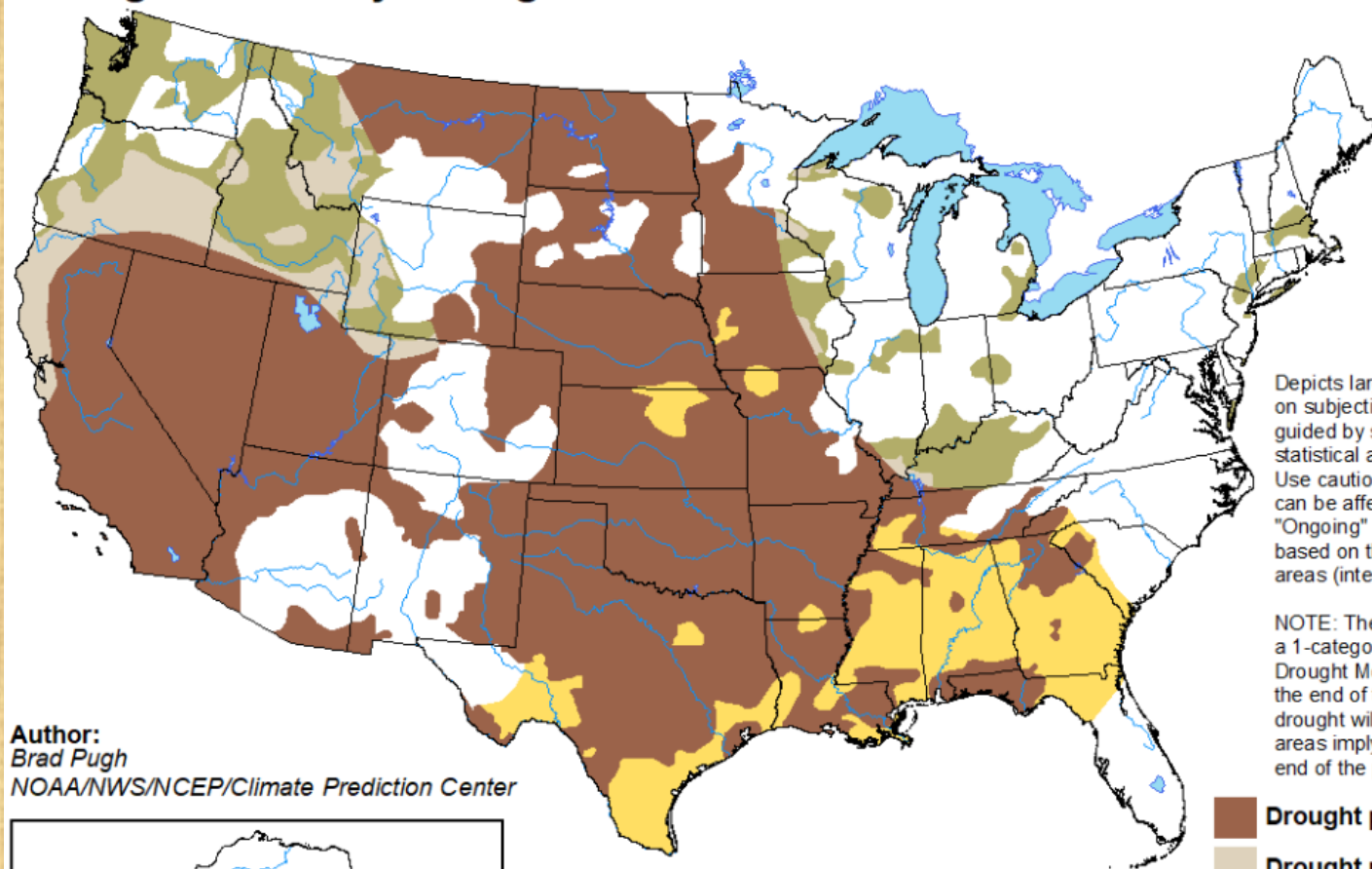




# U.S. Seasonal Drought Outlook

## Drought Tendency During the Valid Period





Valid for October 20, 2022 - January 31, 2023  
Released October 20, 2022



Depicts large-scale trends based on subjectively derived probabilities guided by short- and long-range statistical and dynamical forecasts. Use caution for applications that can be affected by short lived events "Ongoing" drought areas are based on the U.S. Drought Monitor areas (intensities of D1 to D4).

NOTE: The tan areas imply at least a 1-category improvement in the Drought Monitor intensity levels by the end of the period, although drought will remain. The green areas imply drought removal by the end of the period (D0 or none).

**Author:**  
Brad Pugh  
NOAA/NWS/NCEP/Climate Prediction Center

-  Drought persists
-  Drought remains but improves
-  Drought removal likely
-  Drought development likely

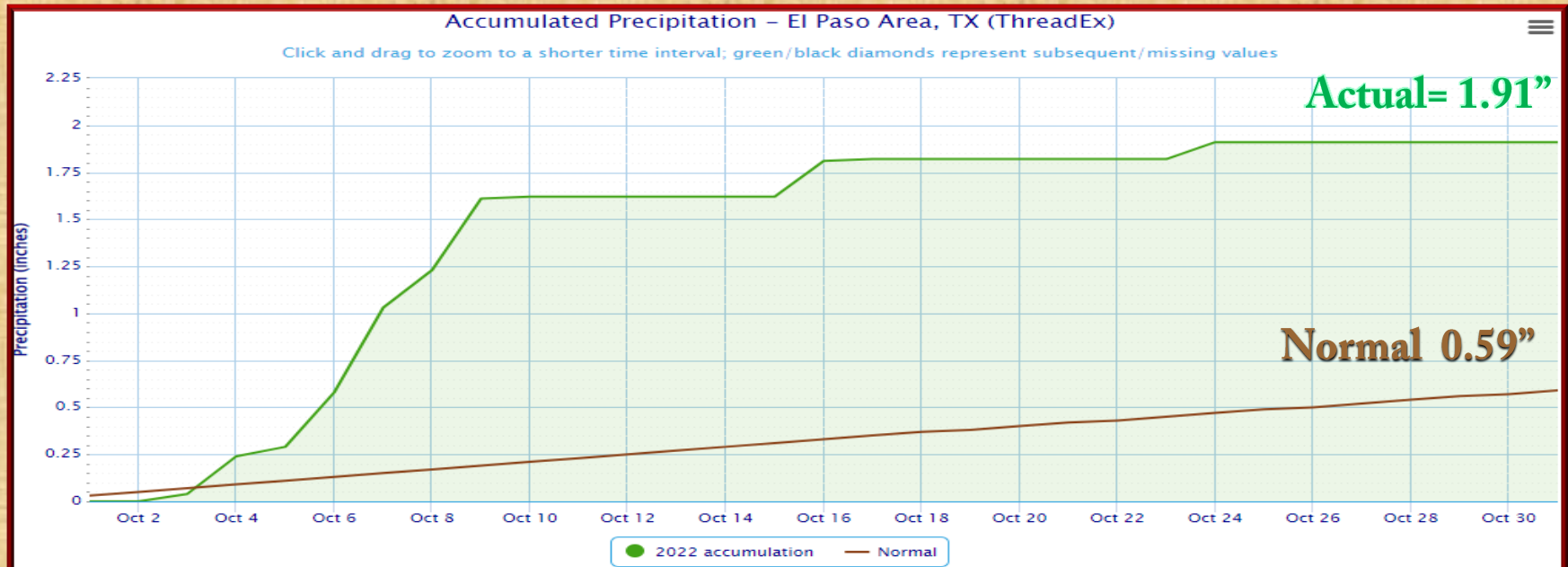
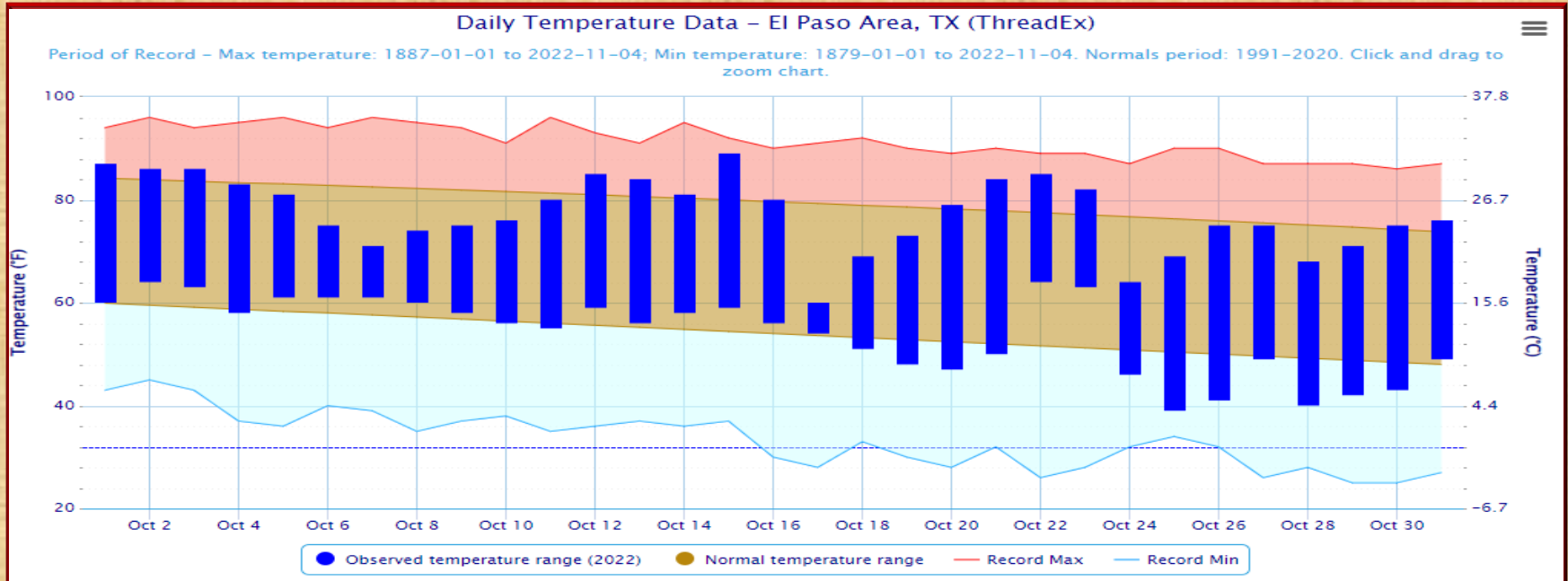


<http://go.usa.gov/3eZ73>

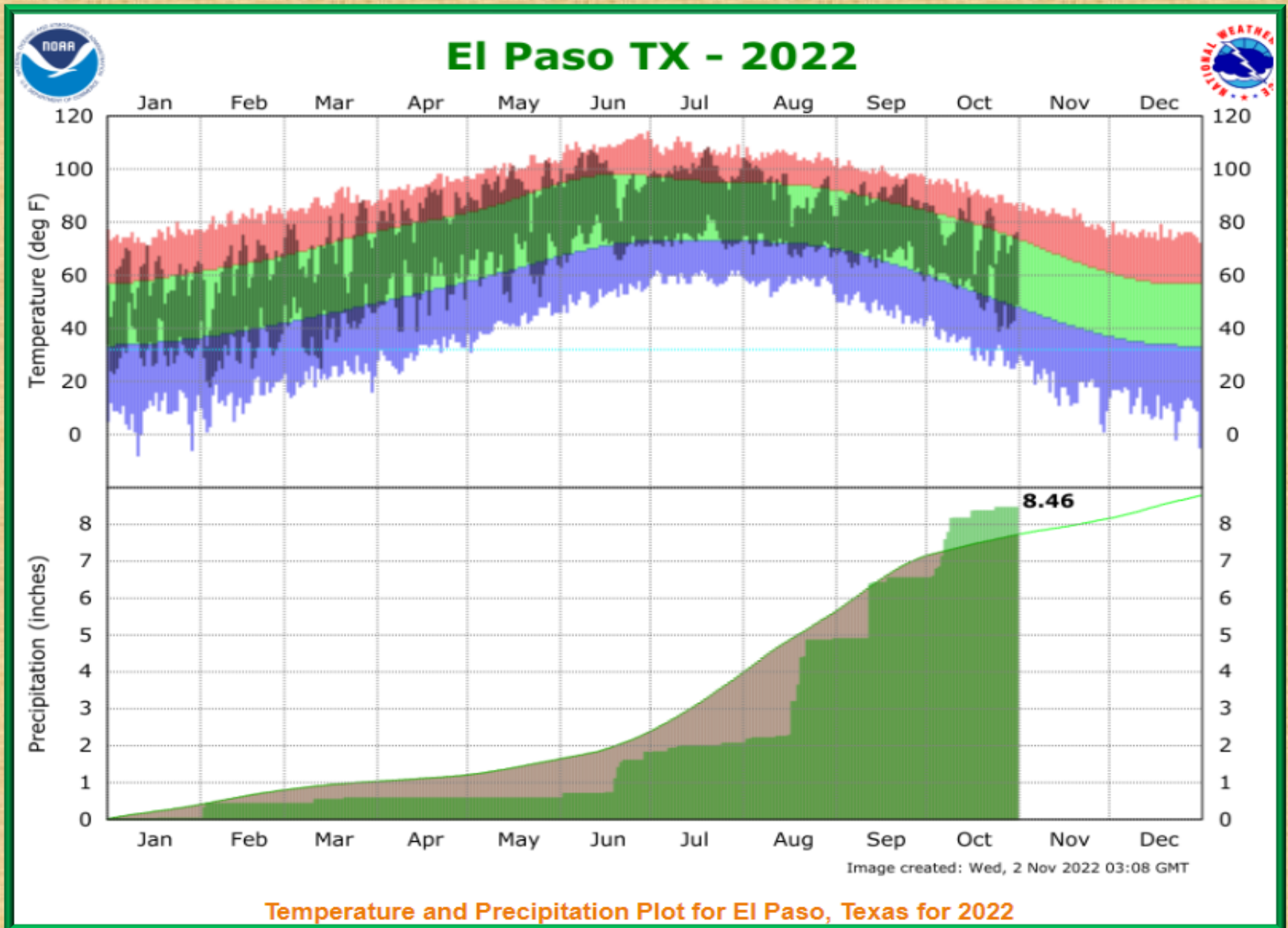


# Temperature and precipitation data for October 2022 in El Paso

○ = record

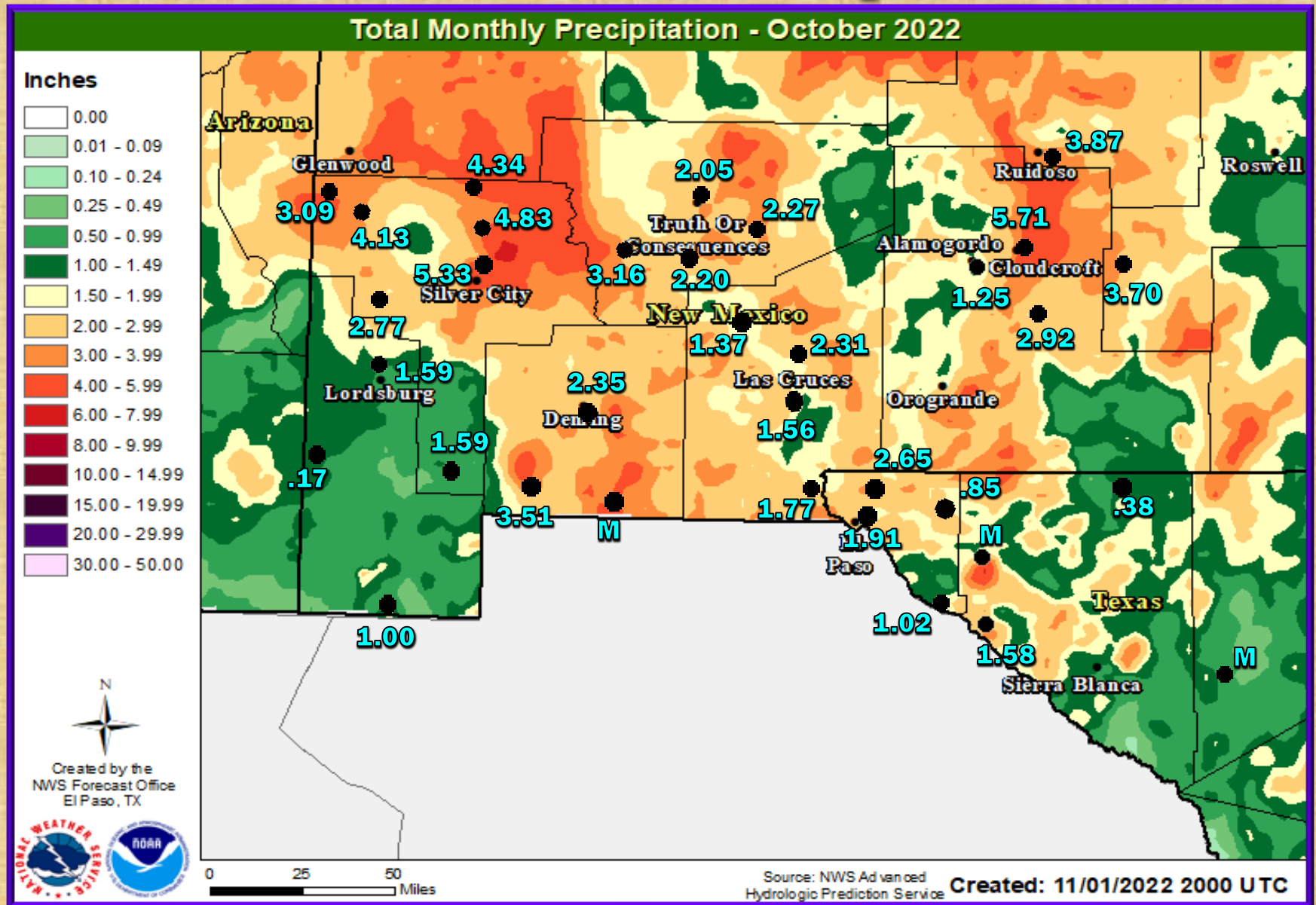


# 2022: Temperature and Precipitation YTD Data for El Paso

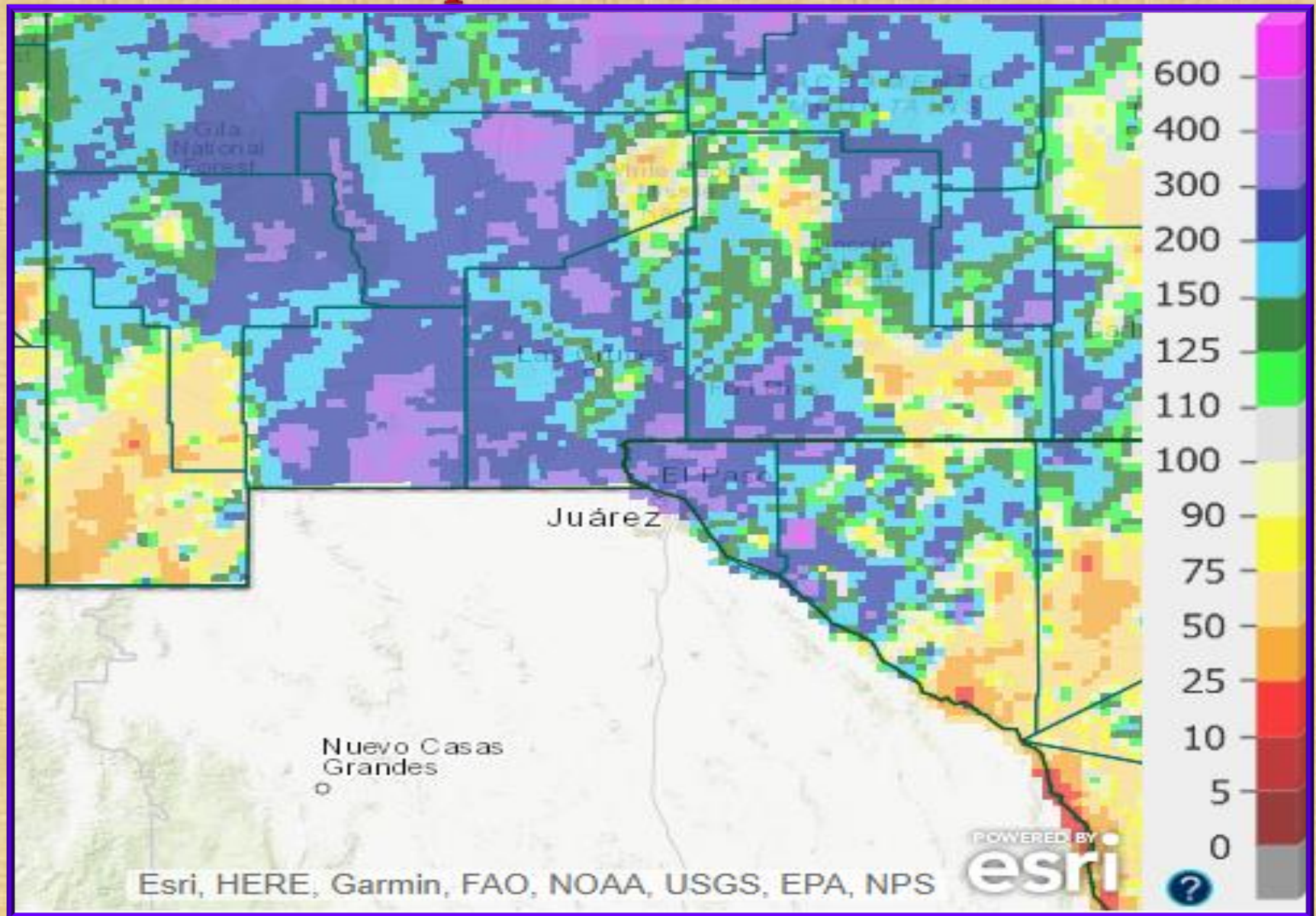




# October 2022 radar rainfall estimate with surface rainfall reports

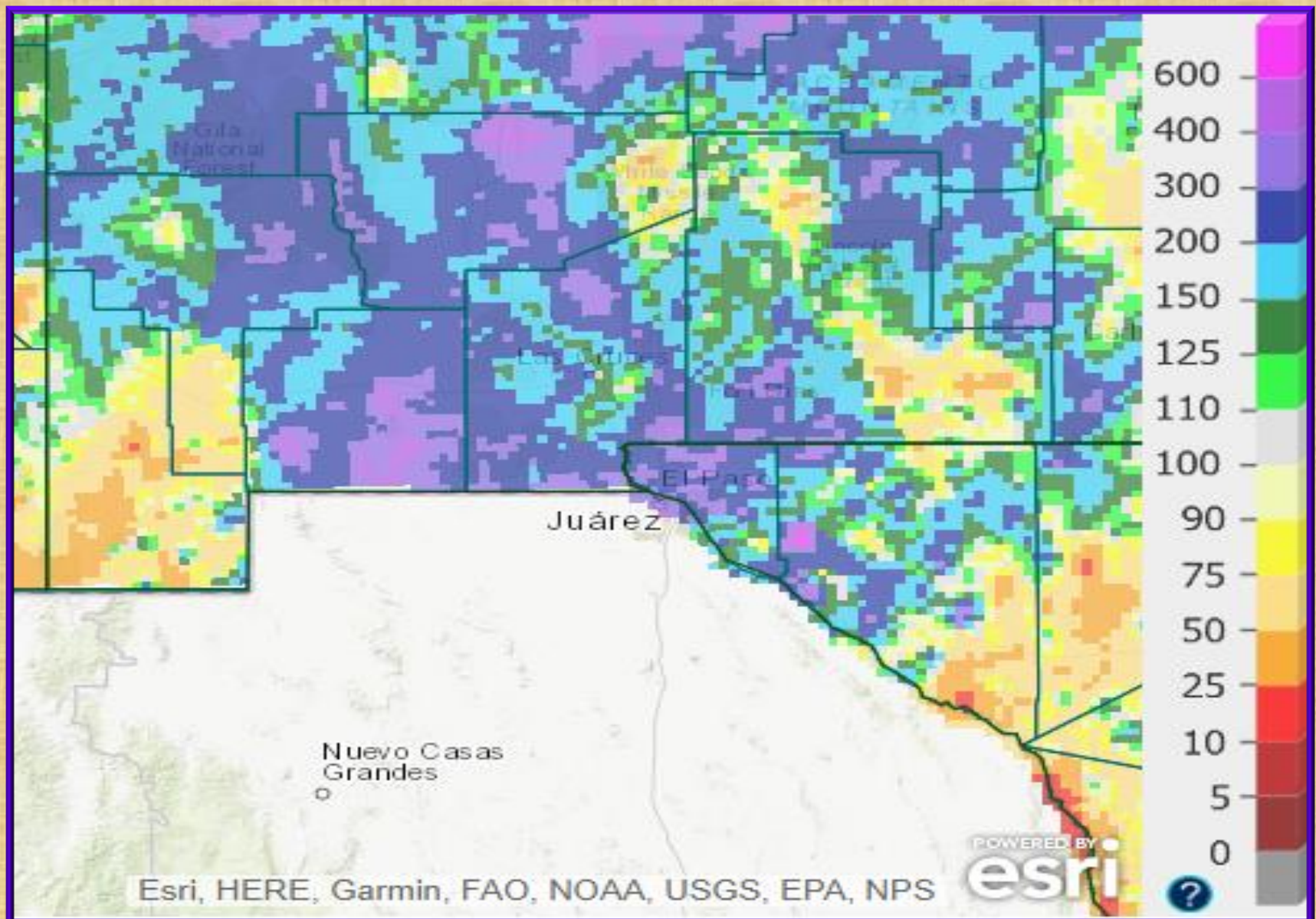


# October 2022 rainfall estimate percent of normal





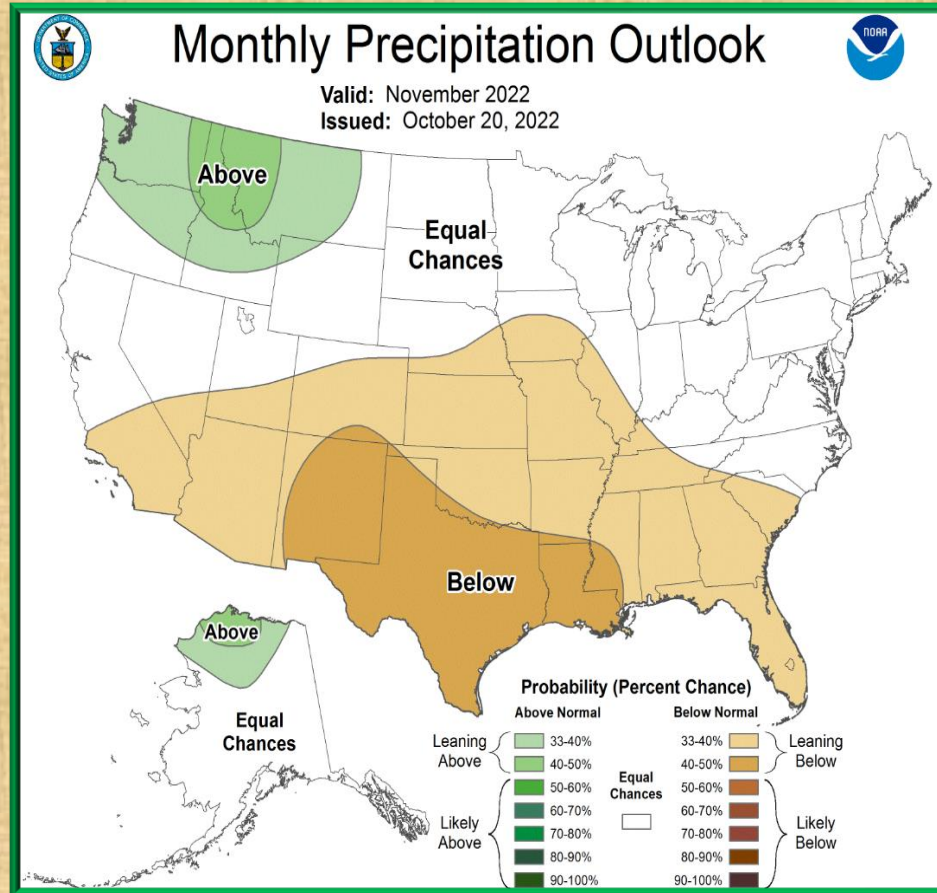
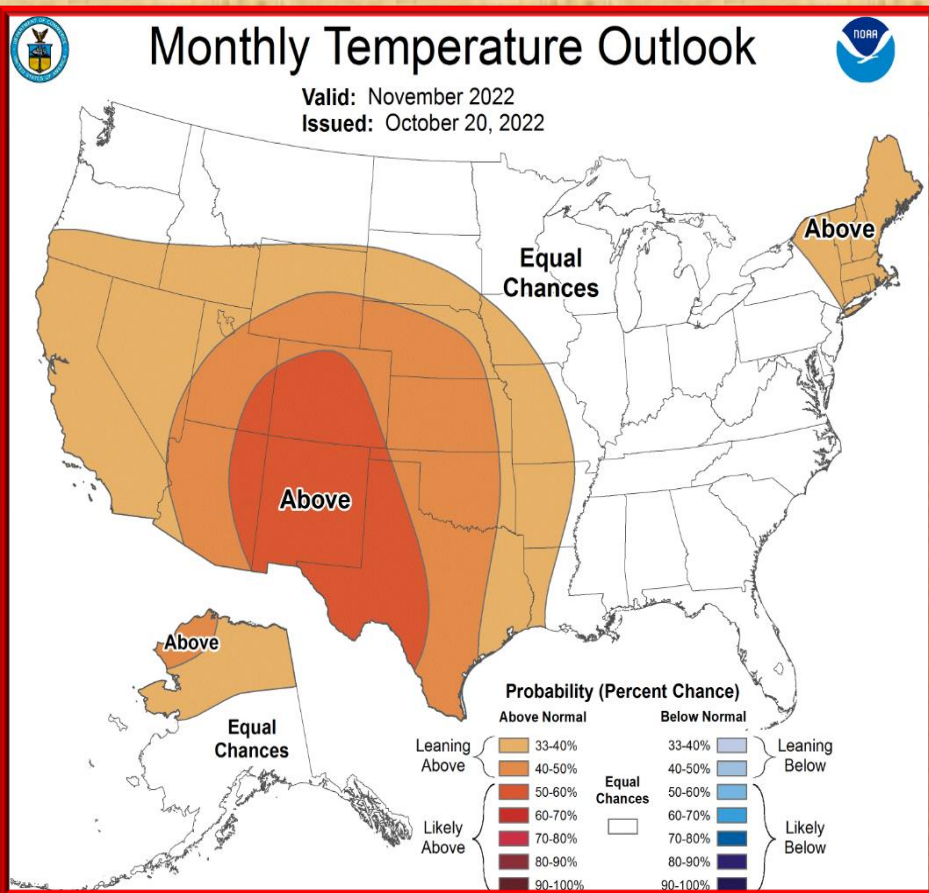
# Radar rainfall estimate percent of normal for the Water Year (Oct 1 – Oct 31)



# Temperature and precipitation outlook For November 2022

## Temperature

## Precipitation

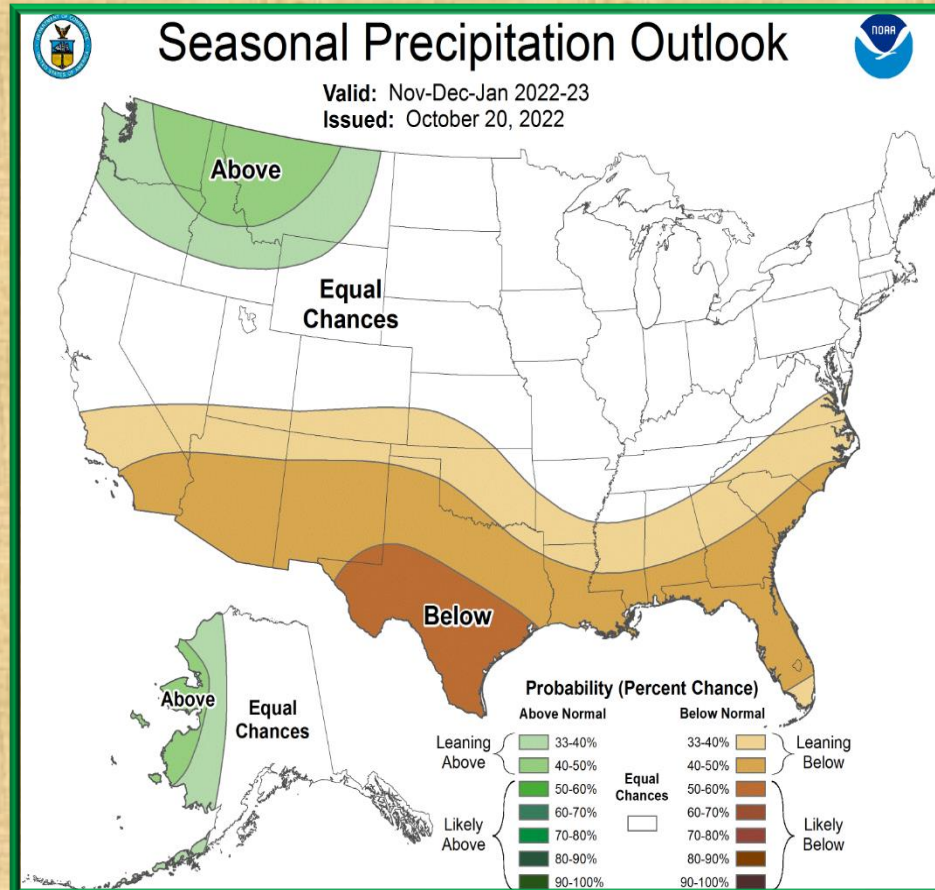
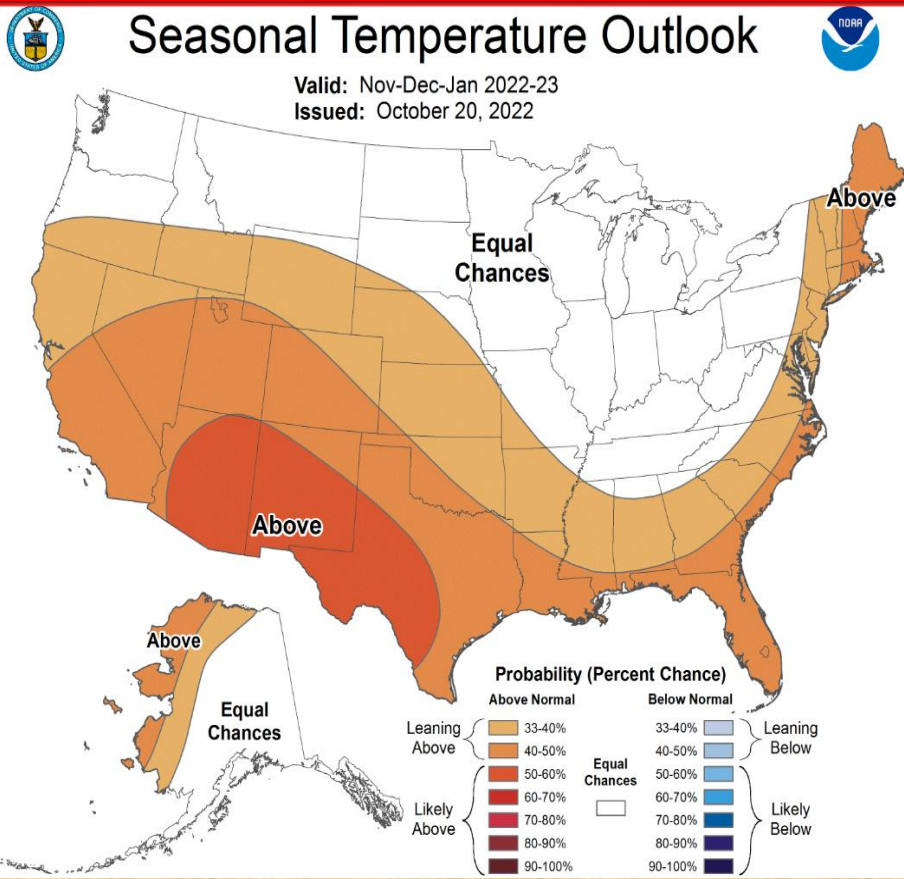




# Temperature and precipitation outlook for Nov-Jan 2023

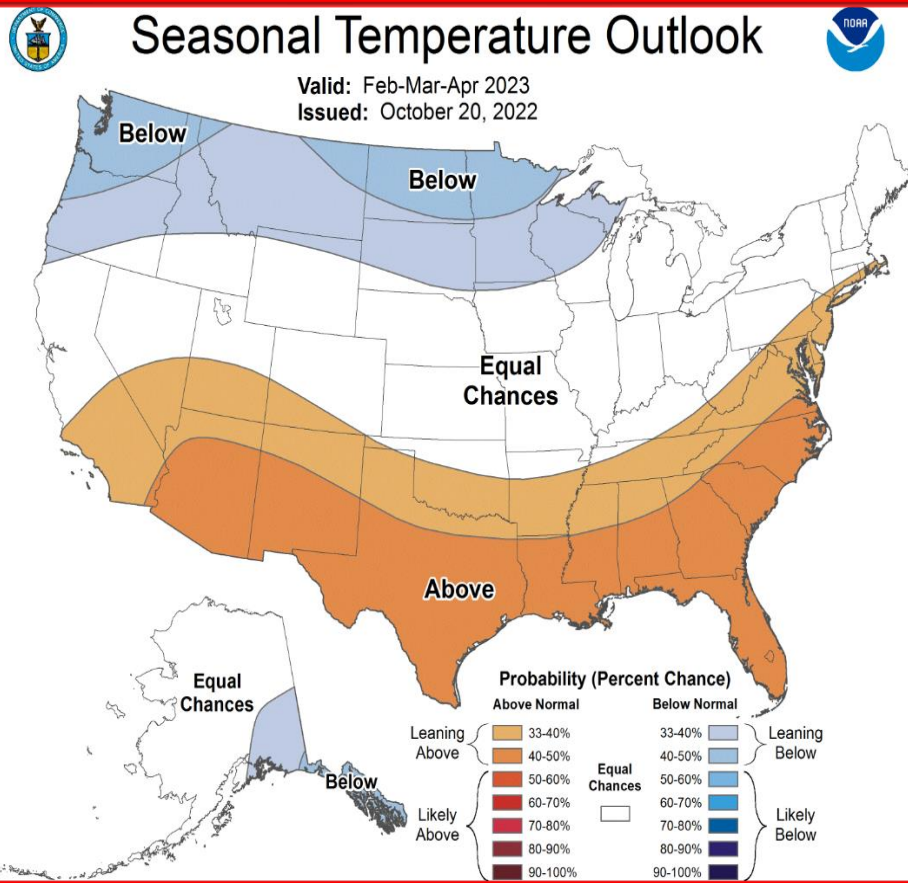
## Temperature

## Precipitation

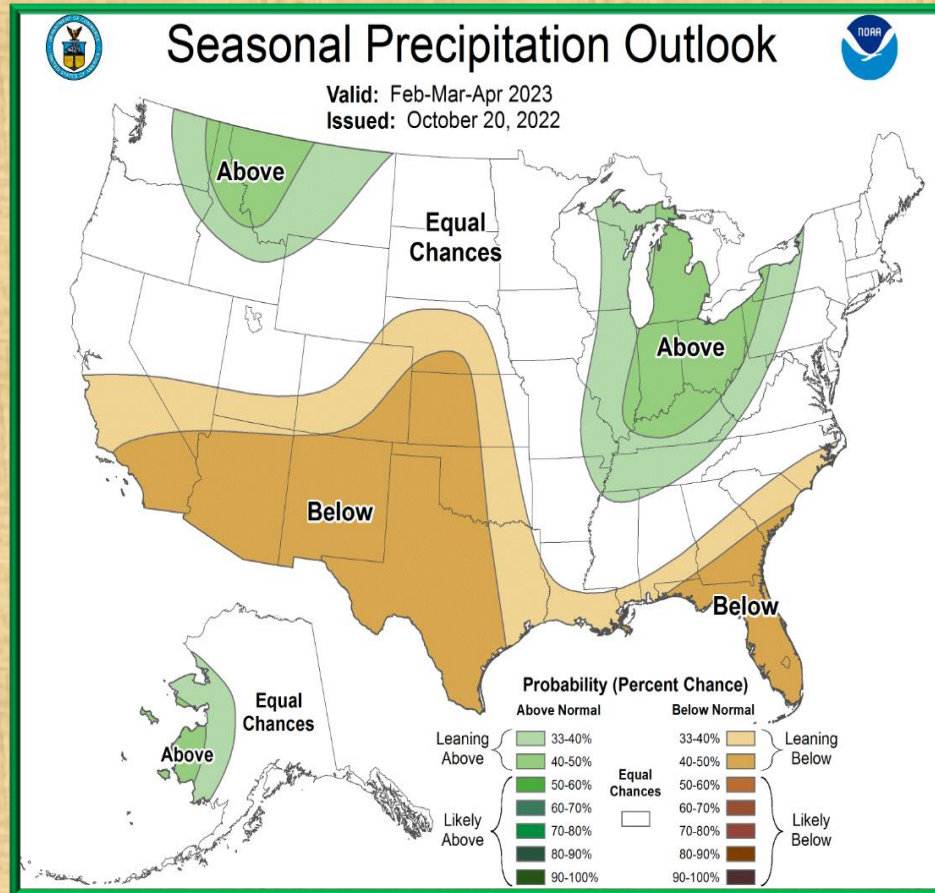


# Temperature and precipitation outlook for Feb-Apr 2023

## Temperature



## Precipitation



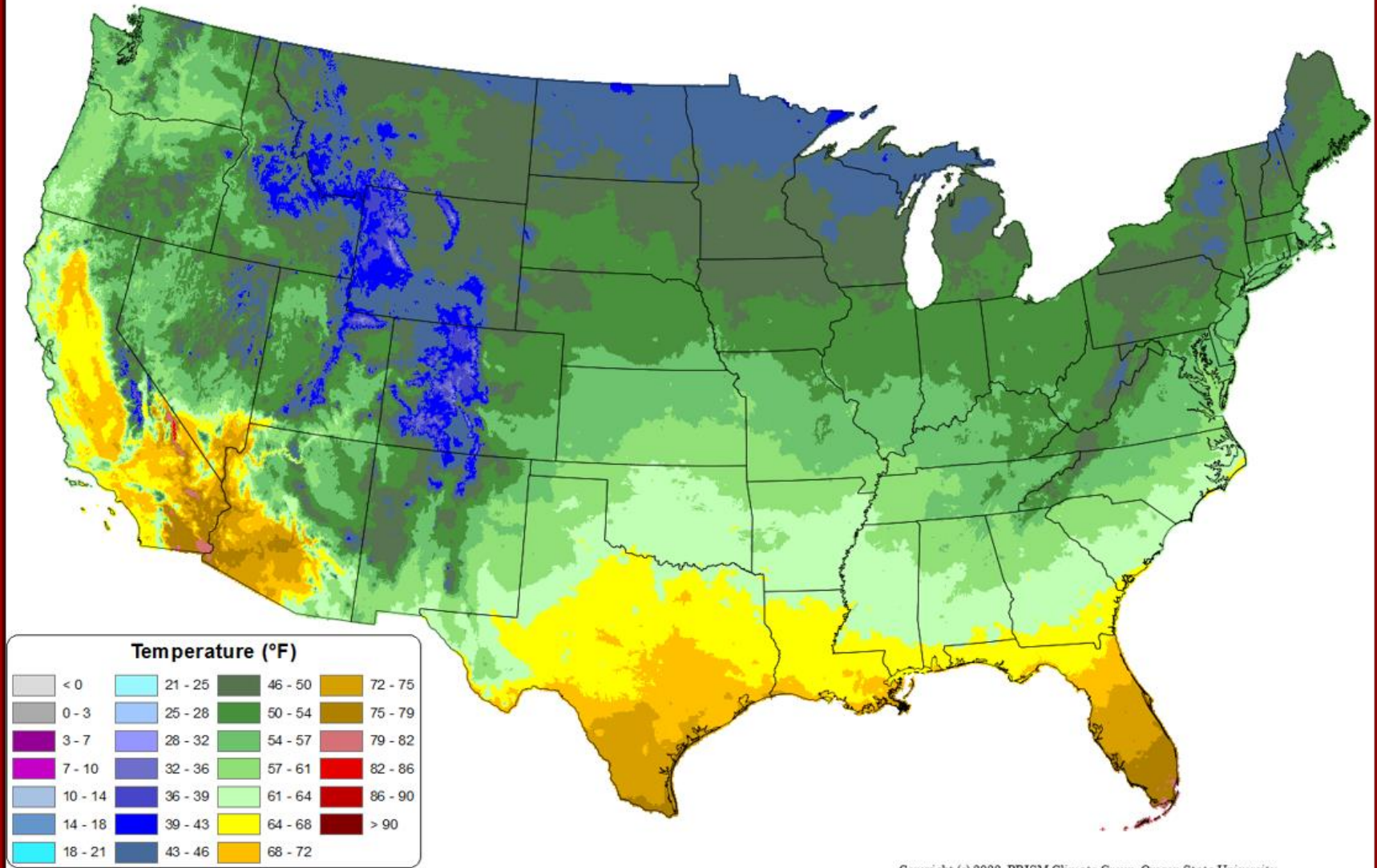


# Average Daily Mean Temperature for October 2022

Average Daily Mean Temperature: Oct 2022

Period ending 7 AM EST 31 Oct 2022

(Map created 02 Nov 2022)



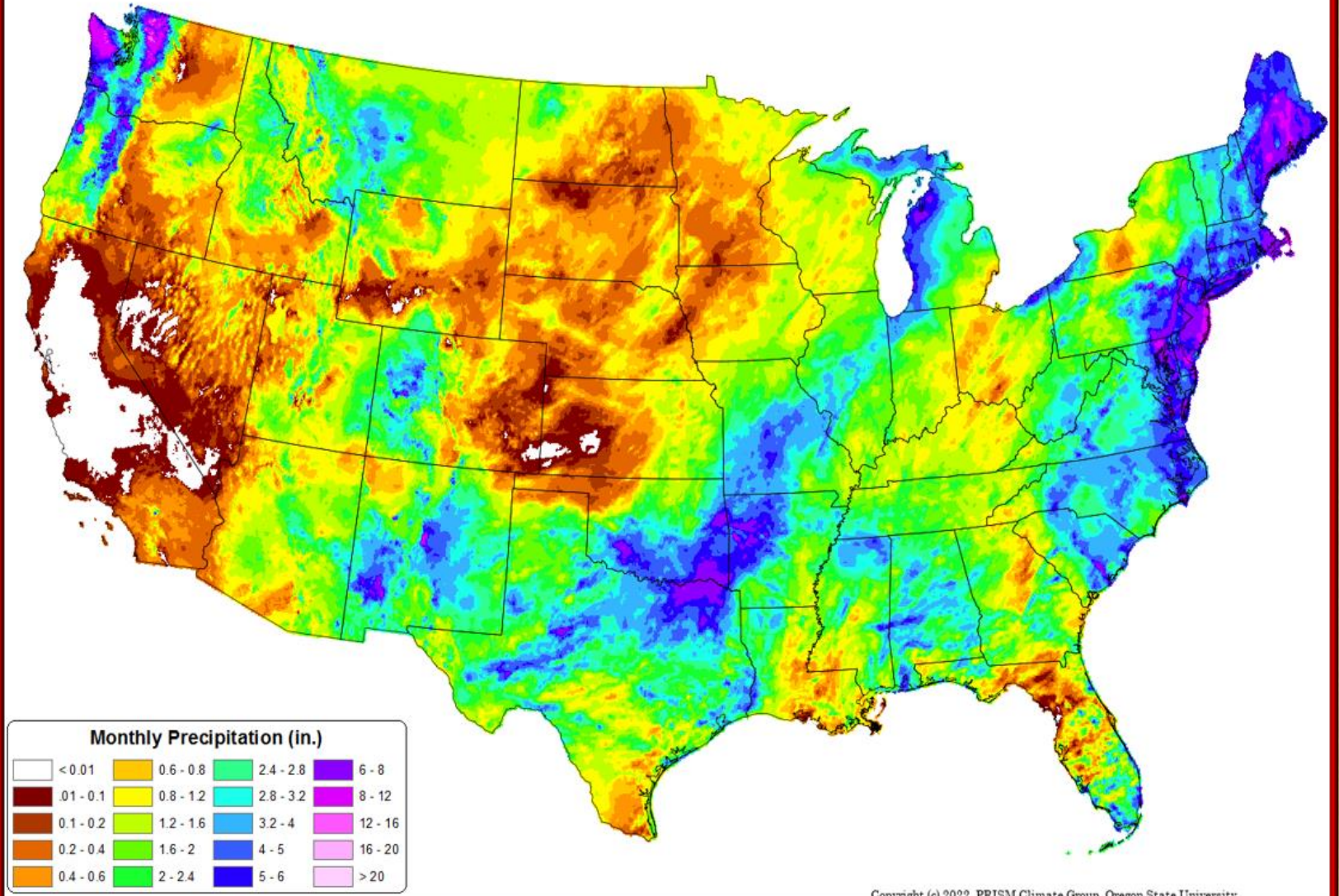


# Total Precipitation for October 2022

Total Precipitation: Oct 2022

Period ending 31 Oct 2022

(Map created 02 Nov 2022)





# Selected Weather Reports October 2022

Date/Time	Location (County)	Event
OCTOBER 8 700 AM	SILVER CITY 4NW-GRANT	4.46 IN. 24 HR RAINFALL
OCTOBER 8 700 AM	BAYARD 9NE-GRANT	3.66 IN. 24 HR RAINFALL
OCTOBER 8 700 AM	TYRONE 3SW-GRANT	3.29 IN. 24 HR RAINFALL
OCTOBER 8 700 AM	KINGSTON-SIERRA	2.99 IN. 24 HR RAINFALL
OCTOBER 8 600 AM	DEMING 15SW-LUNA	2.89 IN. 24 HR RAINFALL
OCTOBER 8 800 AM	EL PASO 9W-EL PASO	2.44 IN. 24 HR RAINFALL
OCTOBER 8 700 AM	PANCHO VILLA SP-LUNA	2.18 IN. 24 HR RAINFALL
OCTOBER 8 700 AM	HILLSBORO-SIERRA	2.15 IN. 24 HR RAINFALL
OCTOBER 8 700 AM	GILA HOT SPRINGS-GRANT	1.86 IN. 24 HR RAINFALL
OCTOBER 8 700 AM	CLOUDCROFT 1N-OTERO	1.81 IN. 24 HR RAINFALL
OCTOBER 8 800 AM	MAYHILL-OTERO	1.61 IN. 24 HR RAINFALL
OCTOBER 8 700 AM	LAS CRUCES 6W-DONA ANA	1.40 IN. 24 HR RAINFALL

# Selected Weather Reports October 2022

Date/Time	Location (County)	Event
OCTOBER 17 700 AM	BAYARD 3N-GRANT	1.68 IN. 24 HR RAINFALL
OCTOBER 17 700 AM	LAS CRUCES 7SE-DONA ANA	1.41 IN. 24 HR RAINFALL
OCTOBER 17 700 AM	SILVER CITY 2SE-GRANT	1.28 IN. 24 HR RAINFALL
OCTOBER 17 700 AM	GILA HOT SPRINGS-GRANT	1.20 IN. 24 HR RAINFALL
OCTOBER 17 700 AM	MESILLA-DONA ANA	1.18 IN. 24 HR RAINFALL
OCTOBER 17 600 AM	DEMING 1SW-LUNA	0.96 IN. 24 HR RAINFALL
OCTOBER 17 850 AM	LAKE ROBERTS-GRANT	0.94 IN. 24 HR RAINFALL
OCTOBER 17 845 AM	BELL CANYON-OTERO	0.77 IN. 24 HR RAINFALL
OCTOBER 17 700 AM	T OR C-SIERRA	0.64 IN. 24 HR RAINFALL
OCTOBER 23 320 PM	SAN AUGUSTIN PASS-DONA ANA	74 MPH PEAK WIND
OCTOBER 23 650 PM	WSMR MAIN POST-DONA ANA	69 MPH PEAK WIND
OCTOBER 23 1035 PM	LAS CRUCES AIRPORT-DONA ANA	56 MPH PEAK WIND



# Selected Weather Reports October 2022

Date/Time	Location (County)	Event
OCTOBER 23 450 AM	CHIRICAHUA MUSEUM-HIDALGO	51 MPH PEAK WIND
OCTOBER 23 955 PM	EL PASO INTL AIRPORT-EL PASO	49 MPH PEAK WIND
OCTOBER 23 1152 AM	SIERRA BLANCA-HUDSPETH	49 MPH PEAK WIND
OCTOBER 23 215 PM	MAYHILL-OTERO	47 MPH PEAK WIND
OCTOBER 23 1109 PM	HIGH ROLLS-OTERO	46 MPH PEAK WIND
OCTOBER 23 1214 PM	SANTA TERESA NWS-DONA ANA	46 MPH PEAK WIND
OCTOBER 23 146 PM	SILVER CITY MTN VIEW-GRANT	45 MPH PEAK WIND
OCTOBER 23 420 PM	DEMING AIRPORT-LUNA	44 MPH PEAK WIND
OCTOBER 23 216 PM	T OR C AIRPORT-SIERRA	43 MPH PEAK WIND
OCTOBER 23 1240 PM	HACHITA VALLEY-HIDALGO	43 MPH PEAK WIND
OCTOBER 23 310 AM	HOLLOMAN AFB-OTERO	41 MPH PEAK WIND
OCTOBER 23 230 PM	SPACEPORT AMERICA-SIERRA	38 MPH PEAK WIND

# Selected Weather Reports October 2022

Date/Time	Location (County)	Event
OCTOBER 24 525 AM	SAN AUGUSTIN PASS-DONA ANA	67 MPH PEAK WIND
OCTOBER 24 619 AM	HIGH ROLLS-OTERO	57 MPH PEAK WIND
OCTOBER 24 118 PM	T OR C AIRPORT-SIERRA	53 MPH PEAK WIND
OCTOBER 24 604 AM	BIGGS FIELD-EL PASO	52 MPH PEAK WIND
OCTOBER 24 135 PM	EL PASO INTL AIRPORT-EL PASO	51 MPH PEAK WIND
OCTOBER 24 515 AM	WSMR MUSEUM-DONA ANA	50 MPH PEAK WIND
OCTOBER 24 1217 PM	HOLLOMAN AFB-OTERO	48 MPH PEAK WIND
OCTOBER 24 321 PM	SIERRA BLANCA-HUDSPETH	47 MPH PEAK WIND
OCTOBER 24 120 PM	SPACEPORT AMERICA-SIERRA	46 MPH PEAK WIND
OCTOBER 24 1020 AM	DEMING AIRPORT-LUNA	45 MPH PEAK WIND
OCTOBER 24 326 PM	DRIPPING SPRINGS-DONA ANA	45 MPH PEAK WIND
OCTOBER 24 109 PM	SANTA TERESA NWS-DONA ANA	44 MPH PEAK WIND



# Selected Weather Reports October 2022

Date/Time	Location (County)	Event
OCTOBER 24 158 PM	DELL CITY-HUDSPETH	44 MPH PEAK WIND
OCTOBER 24 445 AM	MAYHILL-OTERO	42 MPH PEAK WIND
OCTOBER 24 241 PM	MESCALERO-OTERO	41 MPH PEAK WIND
OCTOBER 27 225 PM	SAN AUGUSTIN PASS-DONA ANA	65 MPH PEAK WIND
OCTOBER 27 626 AM	DRIPPING SPRINGS-DONA ANA	53 MPH PEAK WIND
OCTOBER 27 215 AM	WSMR MAIN POST-DONA ANA	53 MPH PEAK WIND
OCTOBER 27 329 PM	HIGH ROLLS-OTERO	51 MPH PEAK WIND
OCTOBER 27 347 PM	WINSTON-SIERRA	48 MPH PEAK WIND
OCTOBER 27 512 AM	T OR C AIRPORT-SIERRA	48 MPH PEAK WIND
OCTOBER 27 255 PM	DEMING AIRPORT-LUNA	47 MPH PEAK WIND
OCTOBER 27 412 PM	HOLLOMAN AFB-OTERO	47 MPH PEAK WIND
OCTOBER 27 515 PM	LAS CRUCES AIRPORT-DONA ANA	47 MPH PEAK WIND

# Selected Weather Reports October 2022

<b>Date/Time</b>	<b>Location (County)</b>	<b>Event</b>
OCTOBER 27 415 PM	GRANT CO AIRPORT-GRANT	45 MPH PEAK WIND
OCTOBER 27 540 PM	LORDSBURG PLAYA MP7-HIDALGO	45 MPH PEAK WIND
OCTOBER 27 625 PM	EL PASO INTL AIRPORT-EL PASO	45 MPH PEAK WIND
OCTOBER 27 801 PM	DELL CITY-HUDSPETH	45 MPH PEAK WIND
OCTOBER 27 917 PM	SIERRA BLANCA-HUDSPETH	43 MPH PEAK WIND
OCTOBER 27 1130 AM	MAYHILL-OTERO	42 MPH PEAK WIND



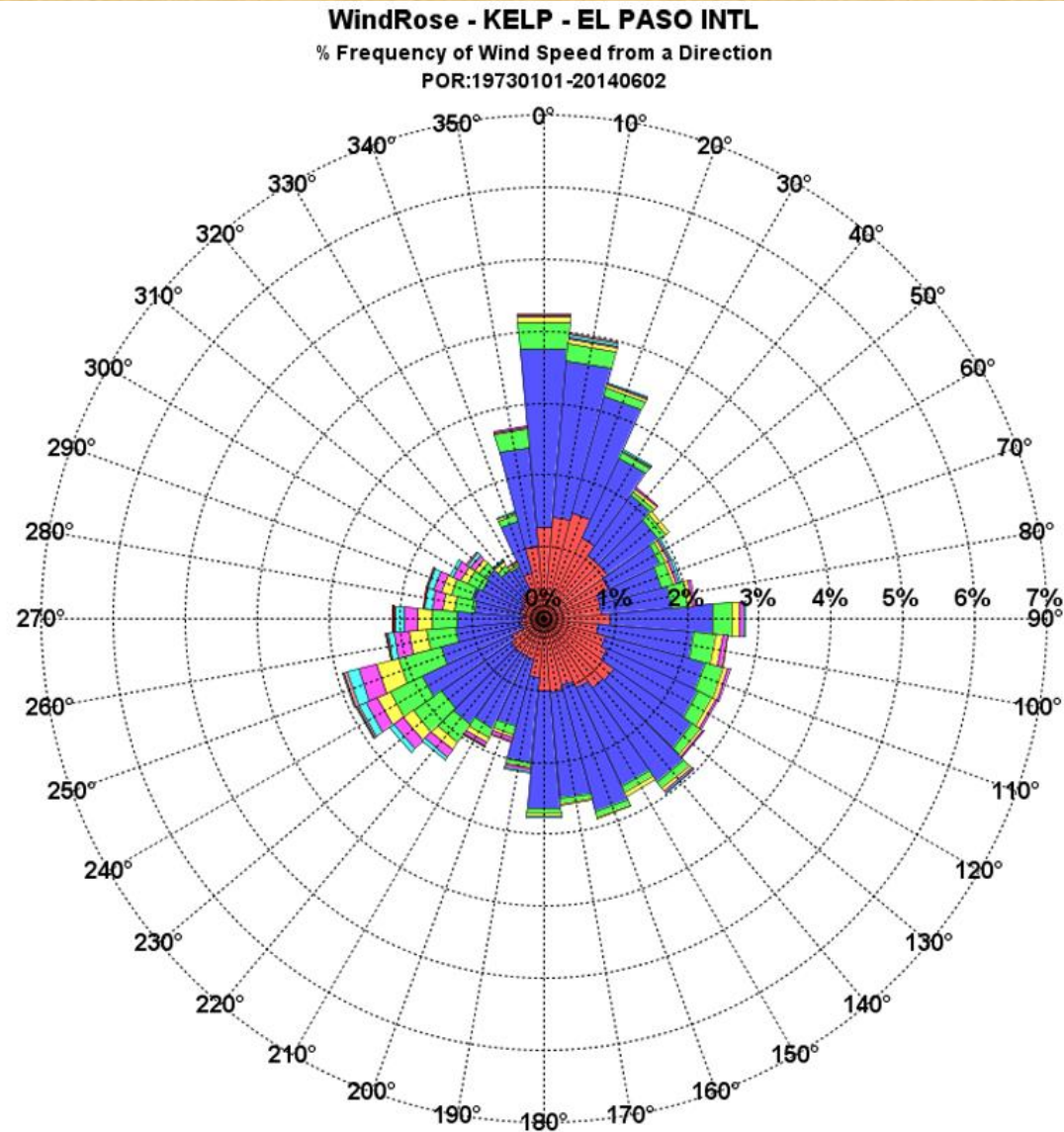
# Special Features


<http://www.srh.noaa.gov/epz/?n=elpwindrosedata>

Month: OCTOBER

Calm: 12.23%

Variable: 2.30%





# NATIONAL WEATHER SERVICE

NATIONAL OCEANIC AND ATMOSPHERIC ADMINISTRATION

[HOME](#)
[FORECAST](#)
[PASTWEATHER](#)
[SAFETY](#)
[INFORMATION](#)
[EDUCATION](#)
[NEWS](#)
[SEARCH](#)
[ABOUT](#)

Local forecast by "City, ST" or ZIP code


[Location Help](#)

## Heavy Rain and Flash Flooding Possible Over Parts of the Eastern United States

Heavy rainfall is expected over portions of the eastern United States through Thursday. Flooding and flash flooding will be possible in some areas. Click the "Read More" link for excessive rainfall forecasts from the Weather Prediction Center. [Read More >](#)

## NWS El Paso

[Weather.gov > El Paso, TX](#)

El Paso, TX  
Weather Forecast Office

[Current Hazards](#)
[Current Conditions](#)
[Radar](#)
[Forecasts](#)
[Rivers and Lakes](#)
[Climate and Past Weather](#)
[Local Programs](#)

### Today

## Wednesday

Warmer with a Few Afternoon Storms

Weather Forecast Office  
El Paso, TX  
September 27, 2016 4:43 PM

Local forecast by "City, ST" or ZIP code


[Location Help](#)

## Heavy rain expected across the Mid-Atlantic region and central Appalachians.


Heavy rainfall is possible over portions of the eastern United States today, with the highest risk across the Mid-Atlantic and central Appalachians. Click the "Read More" link for excessive rainfall forecasts from the Weather Prediction Center. Afternoon showers and thunderstorms are possible over portions of the Southwest and southern Rockies through Friday. [Read More >](#)

## Monthly Weather Digest

[Weather.gov > El Paso, TX > Monthly Weather Digest](#)

El Paso, TX  
Weather Forecast Office


[Current Hazards](#)
[Current Conditions](#)
[Radar](#)
[Forecasts](#)
[Rivers and Lakes](#)
[Climate and Past Weather](#)
[Local Programs](#)



Southern New Mexico and Far West Texas has a variety of weather from month to month. Conditions can range from extreme drought, to heavy flooding rains, from record breaking heat to bone chilling cold. Below you will find past weather highlights from the area that the NWS office in Santa Teresa NM covers. This area includes the following counties in New Mexico: Hudspeth, Grant, Luna, Sierra, Doña Ana and Otero and the following counties in Texas: El Paso and Hudspeth.

### WEATHER DIGESTS AND BULLETINS

Weather Digest	Southwest Weather Bulletins
<a href="#">January</a>	2005 <a href="#">Spring</a> <a href="#">Fall</a>
<a href="#">February</a>	2006 <a href="#">Spring</a> <a href="#">Fall</a>
<a href="#">March</a>	2007 <a href="#">Spring</a> <a href="#">Fall</a>
<a href="#">April</a>	2008 <a href="#">Spring</a> <a href="#">Fall</a>
<a href="#">May</a>	2009 <a href="#">Spring</a> <a href="#">Fall</a>
<a href="#">June</a>	2010 <a href="#">Spring</a> <a href="#">Fall</a>
<a href="#">July</a>	2011 <a href="#">Spring</a> <a href="#">Fall</a>
<a href="#">August</a>	2012 <a href="#">Spring</a> <a href="#">Fall</a>
<a href="#">September</a>	2013 <a href="#">Spring</a> <a href="#">Fall</a>
<a href="#">October</a>	2014 <a href="#">Spring</a> <a href="#">Fall</a>
<a href="#">November</a>	
<a href="#">December</a>	



weather.gov/epz

**Don't Forget-Current and past issues of our Weather Digest are available on our website at <http://www.weather.gov/epz/>**

**Just click on "Local Programs>Weather Digest", then choose which month's Digest to view. Also, though discontinued, don't forget to check out our back issues of Southwest Weather Bulletin.**