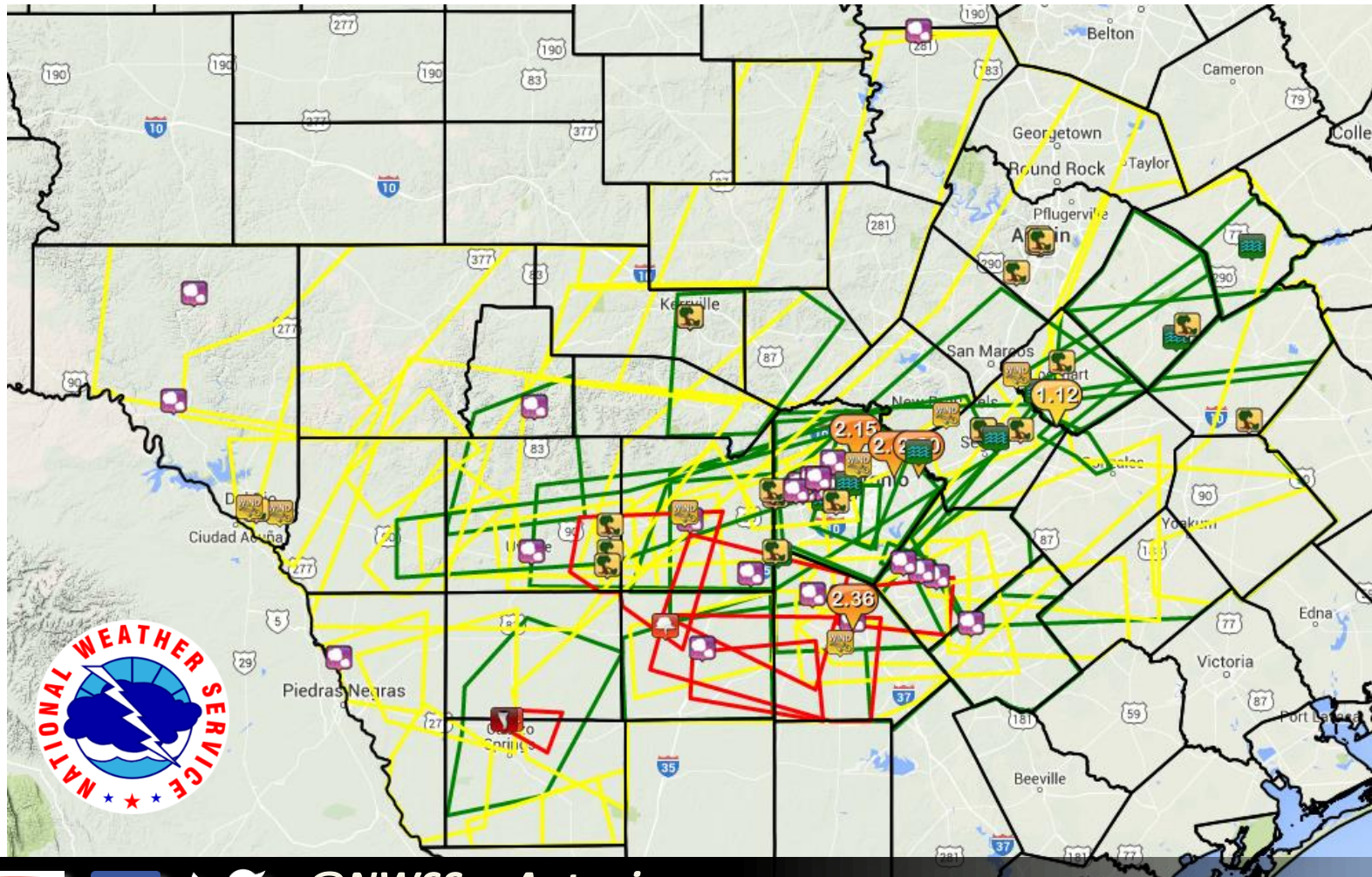


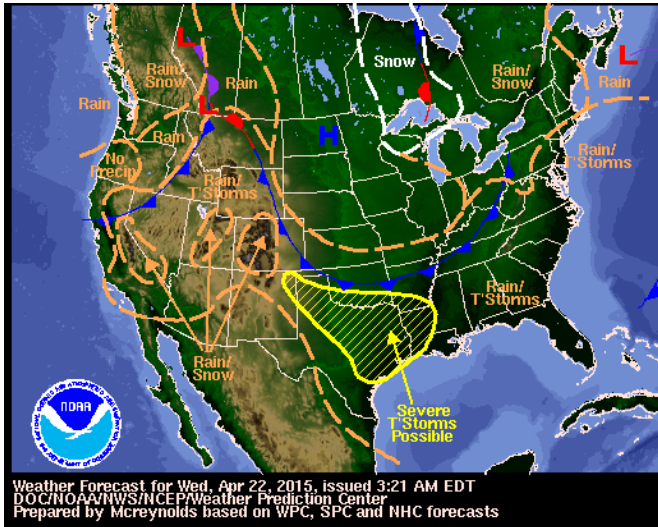
# April 22<sup>nd</sup> – 27<sup>th</sup> Severe Storms

## Austin - San Antonio Weather Forecast Office

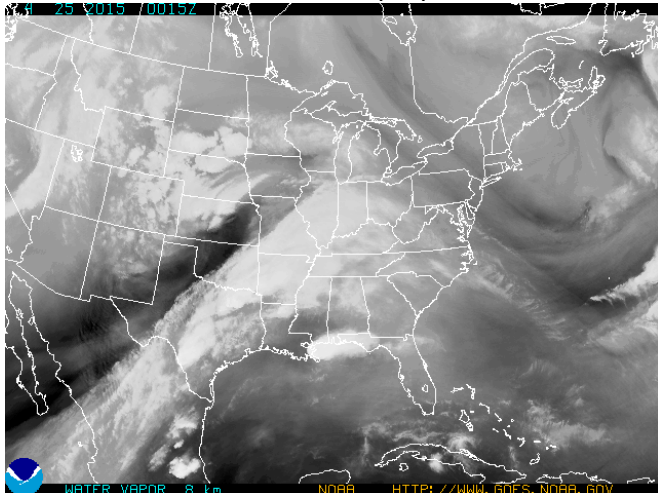


@NWSSanAntonio  
[weather.gov/ewx](http://weather.gov/ewx)

# Synoptic Set Up - Synopsis



WPC Surface Map April 22nd

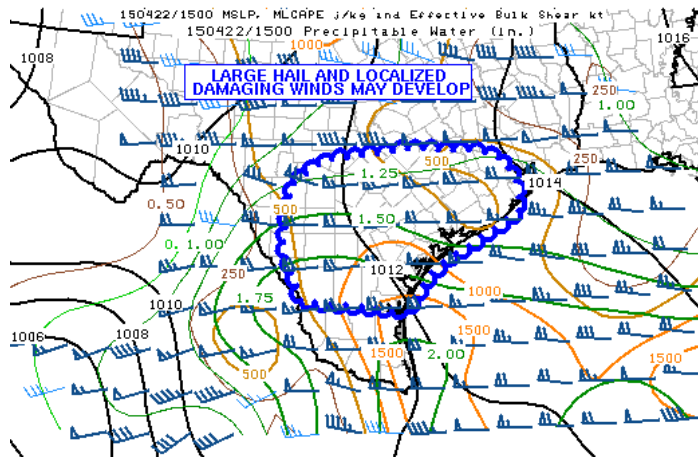


Satellite Water Vapor Image from April 25th

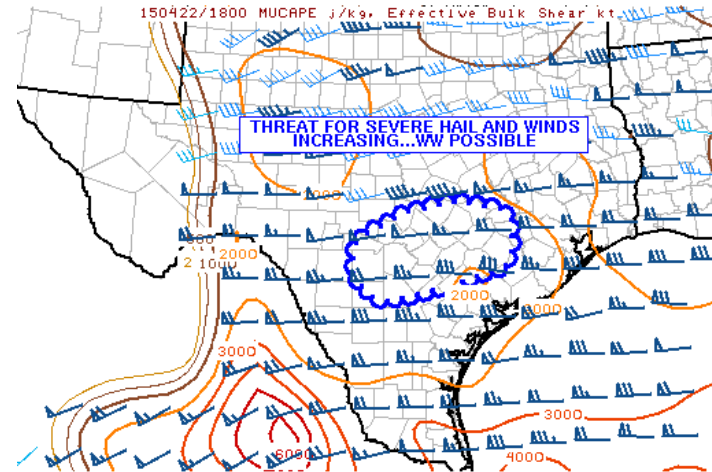
A series of upper level disturbances with an active subtropical jet and dryline caused an active period of severe weather from April 22-27. Below is a breakdown of what happened:

- April 22<sup>nd</sup> – Storms formed across the Mexican mountains and then moved into the Rio Grande Plains. Strong to severe storms occurred mainly across the southern Rio Grande Plains and southern counties.
- April 23<sup>rd</sup> – Storms initialized once again across the Mexican mountains and then moved across the Rio Grande Plains. Strong to severe storms occurred mainly over the Rio Grande Plains and southern Edwards Plateau.
- April 24<sup>th</sup> – Strong thunderstorms formed early Friday morning along and east of Interstate 35. Heavy locally rain resulted in flash flooding across Bexar and southeastern counties of South Central Texas. Then later that evening, the threat of severe storms returned across the southern part of the Rio Grande Plains.
- April 26<sup>th</sup> and 27<sup>th</sup> – An active subtropical jet with the combination of the dryline and pre-frontal trough resulted in another round of severe storms across the Edwards Plateau into the Interstate 35 corridor.

# Mesoscale Discussions – 4/22/15



SPC MCD #0415



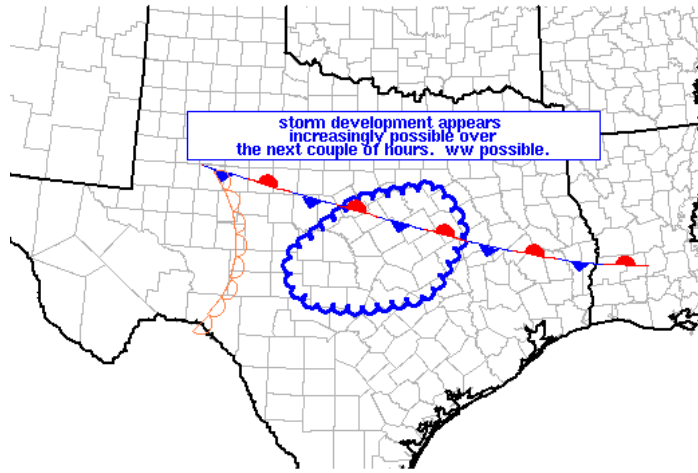
SPC MCD #0418

<http://www.spc.noaa.gov/products/md/md0415.html>

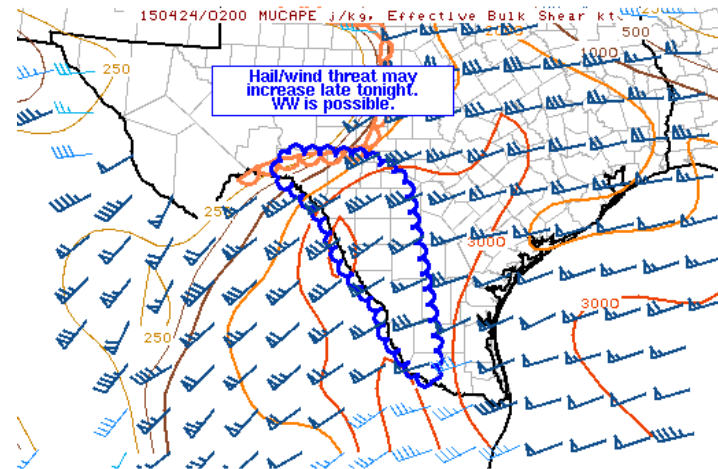
<http://www.spc.noaa.gov/products/md/md0418.html>



# Mesoscale Discussions – 4/23/15



SPC MCD #0428



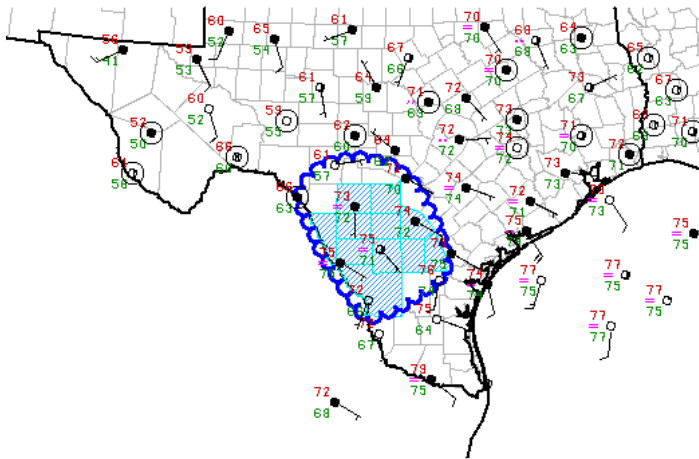
SPC MCD #0429

<http://www.spc.noaa.gov/products/md/md0428.html>

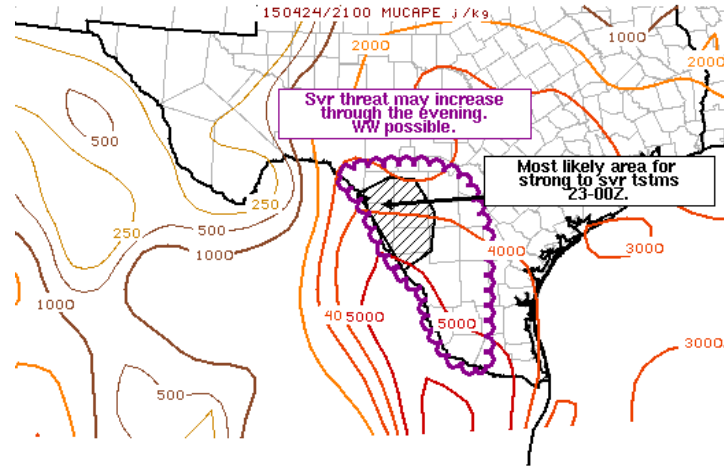
<http://www.spc.noaa.gov/products/md/md0429.html>



# Mesoscale Discussions – 4/24/15



SPC MCD #0431



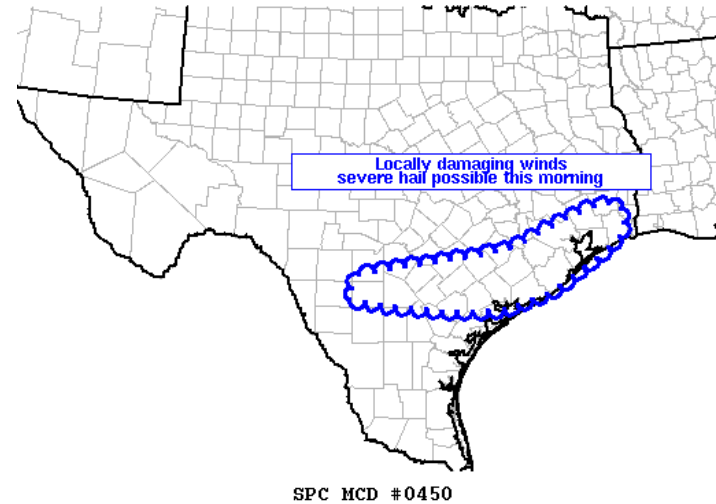
SPC MCD #0439

<http://www.spc.noaa.gov/products/md/md0430.html> (not pictured)

<http://www.spc.noaa.gov/products/md/md0431.html>

<http://www.spc.noaa.gov/products/md/md0439.html>

# Mesoscale Discussions – 4/25/15

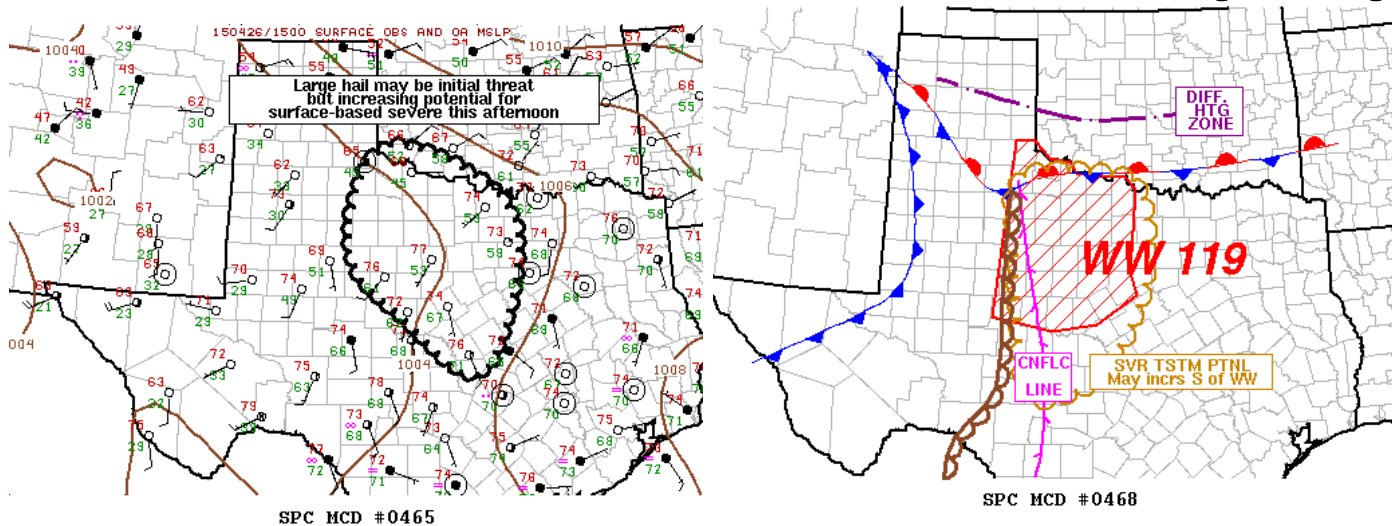


<http://www.spc.noaa.gov/products/md/md0447.html> (not pictured)

<http://www.spc.noaa.gov/products/md/md0449.html>

<http://www.spc.noaa.gov/products/md/md0450.html>

# Mesoscale Discussions – 4/26/15



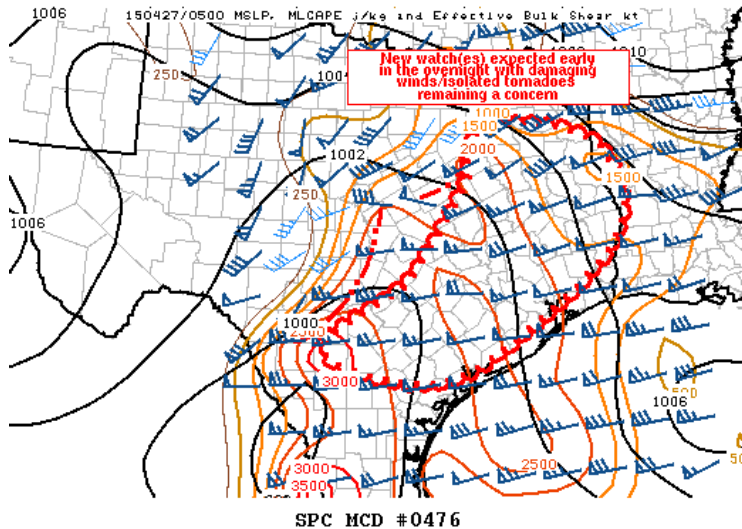
<http://www.spc.noaa.gov/products/md/md0465.html>

<http://www.spc.noaa.gov/products/md/md0468.html>

<http://www.spc.noaa.gov/products/md/md0473.html> (not pictured)



# Mesoscale Discussions – 4/27/15



<http://www.spc.noaa.gov/products/md/md0476.html>

# Severe Thunderstorm Watch #97

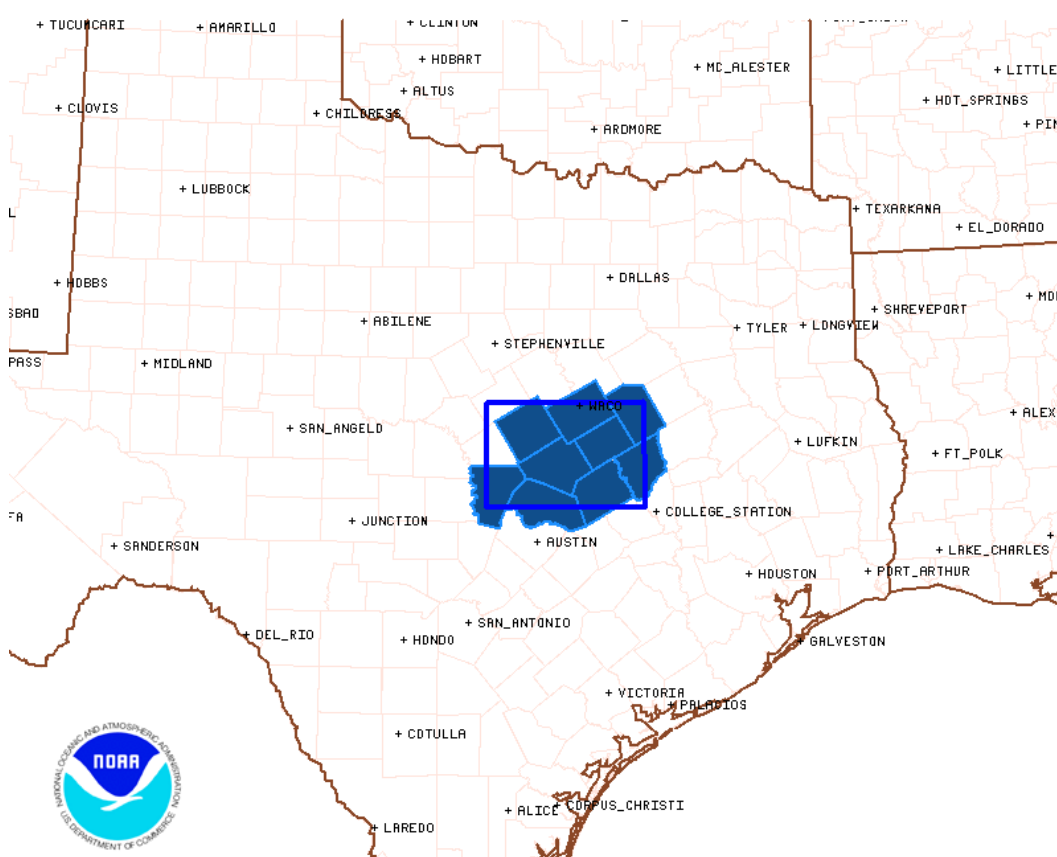
Issued by Storm Prediction Center in Norman, OK

Initially issued for Burnet, Lee, and Williamson Counties

From 5:05 pm to 9:00 pm on April 23<sup>rd</sup>, 2015

Primary Threats Included:

- Large Hail to 2" in diameter
- Damaging wind gusts to 70 mph



**Severe Thunderstorm Watch # 97 - Valid from 505 PM until 900 PM CDT**

NOAA/NWS/Storm Prediction Center

Updated: 20150423/2232 UTC

Hazard	Tornadoes	EF2+ Tornadoes	Severe Wind	65 kt+ Wind	Severe Hail	2"+ Hail
Likelihood	Low	Very Low	Low	Low	Moderate	Moderate

# Severe Thunderstorm Watch #98

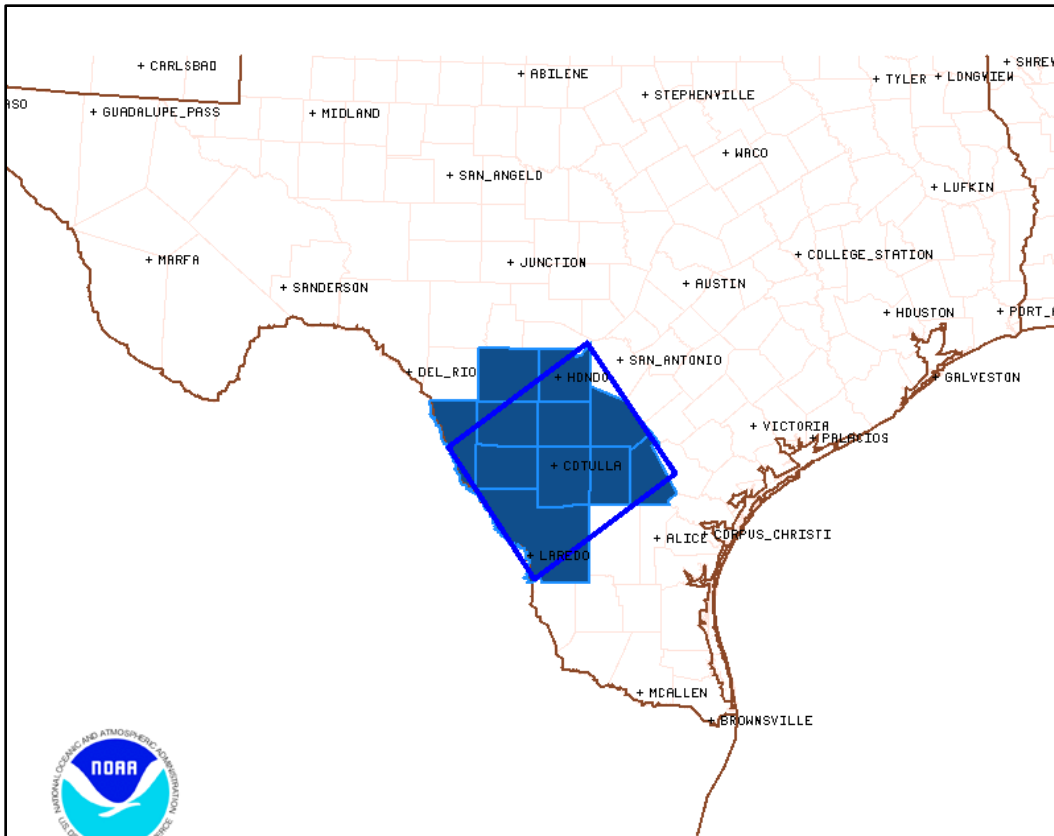
Issued by Storm Prediction Center in Norman, OK

Initially issued 7 Counties across the Rio Grande Plains

From 2:55 am to 10:00 am on April 24<sup>rd</sup>, 2015

Primary Threats Included:

- Large Hail to 2" in diameter
- Damaging wind gusts to 70 mph



**Severe Thunderstorm Watch # 98 - Valid from 255 AM until 1000 AM CDT**

NOAA/NWS/Storm Prediction Center

Updated: 20150424/0806 UTC

Hazard	Tornadoes	EF2+ Tornadoes	Severe Wind	65 kt+ Wind	Severe Hail	2"+ Hail
Likelihood	Low	Very Low	Low	Very Low	Moderate	Moderate



# Severe Thunderstorm Watch #104

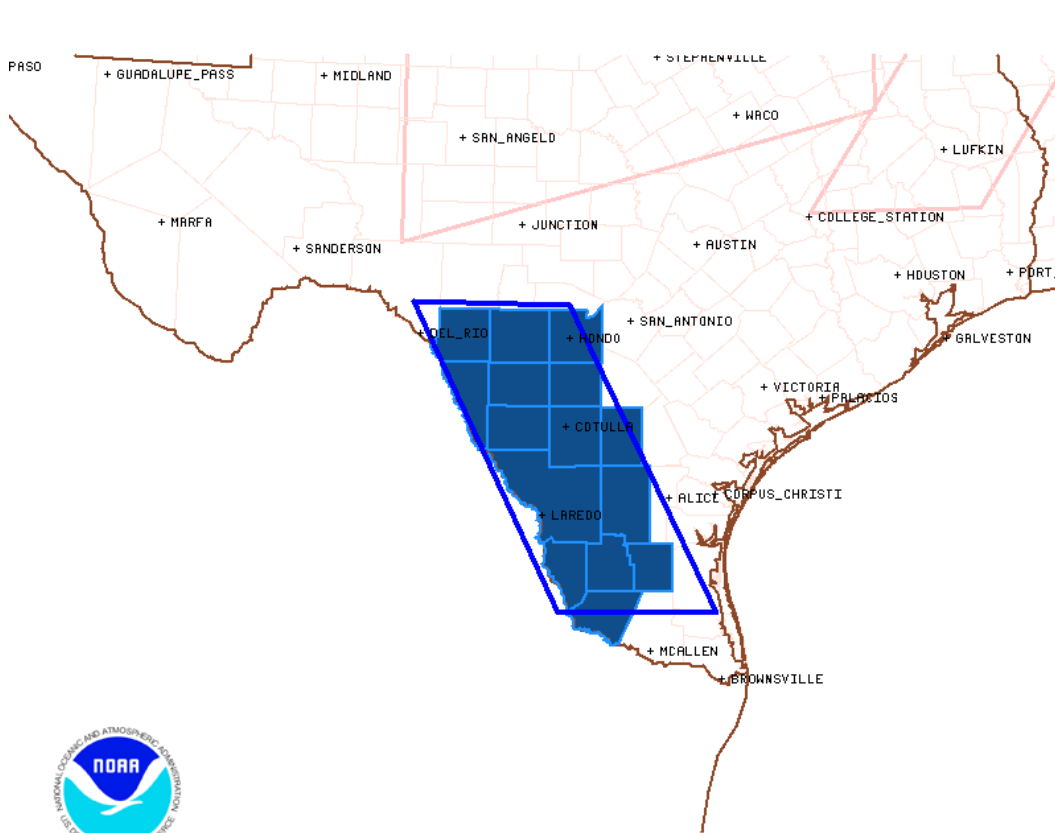
Issued by Storm Prediction Center in Norman, OK

Initially issued 7 Counties across the Rio Grande Plains

From 6:50 pm April 24<sup>th</sup> to 2:00 am on April 25<sup>th</sup>, 2015

Primary Threats Included:

- Large Hail to 2" in diameter
- Damaging wind gusts to 70 mph



**Severe Thunderstorm Watch # 104 - Valid from 650 PM until 200 AM CDT**

NOAA/NWS/Storm Prediction Center

Updated: 20150424/2356 UTC

Hazard	Tornadoes	EF2+ Tornadoes	Severe Wind	65 kt+ Wind	Severe Hail	2"+ Hail
Likelihood	Low	Very Low	Moderate	Low	Moderate	Moderate

# Severe Thunderstorm Watch #107

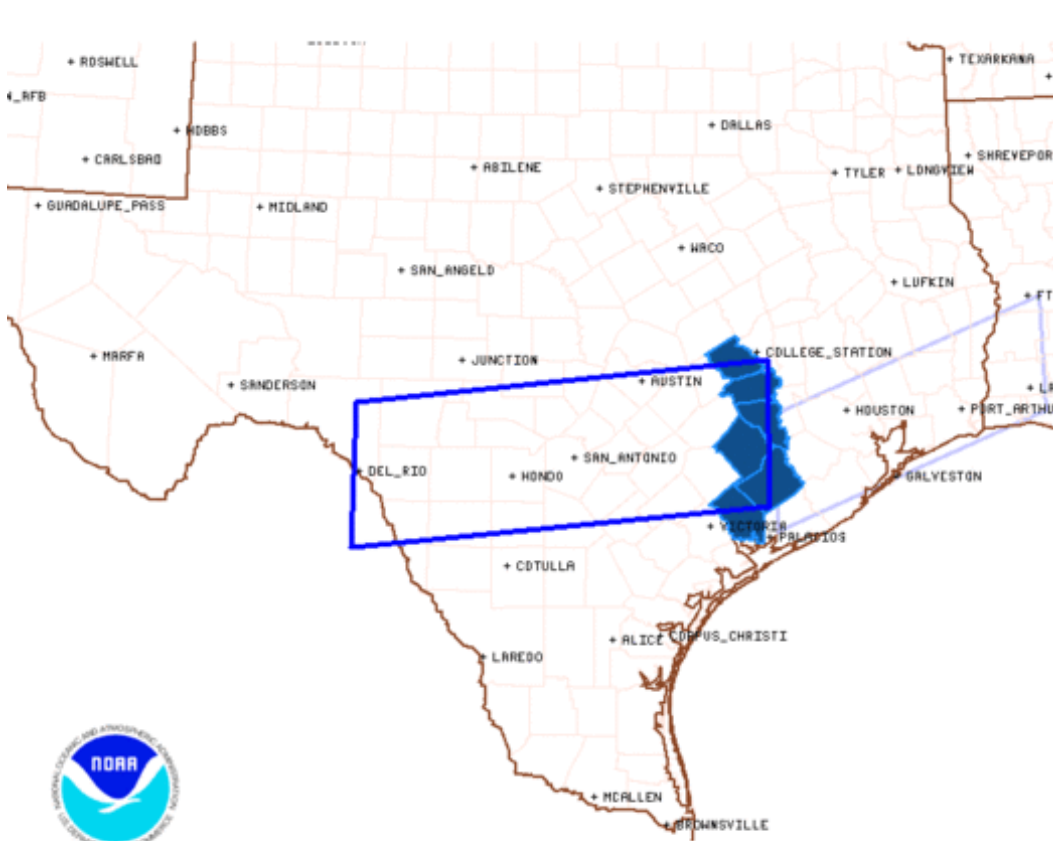
Issued by Storm Prediction Center in Norman, OK

Initially issued most of South Central Texas, with the exception of our northern Counties

From 3:10 am 10:00 am on April 25th, 2015

Primary Threats Included:

- Large Hail to 2" in diameter
- Damaging wind gusts to 70 mph



**Severe Thunderstorm Watch # 107 - Valid from 310 AM until 1000 AM CDT**

NOAA/NWS/Storm Prediction Center

Updated: 20150425/1453 UTC

Hazard	Tornadoes	EF2+ Tornadoes	Severe Wind	65 kt+ Wind	Severe Hail	2"+ Hail
Likelihood	Low	Very Low	Low	Very Low	Moderate	Moderate

# Severe Thunderstorm Watch #123

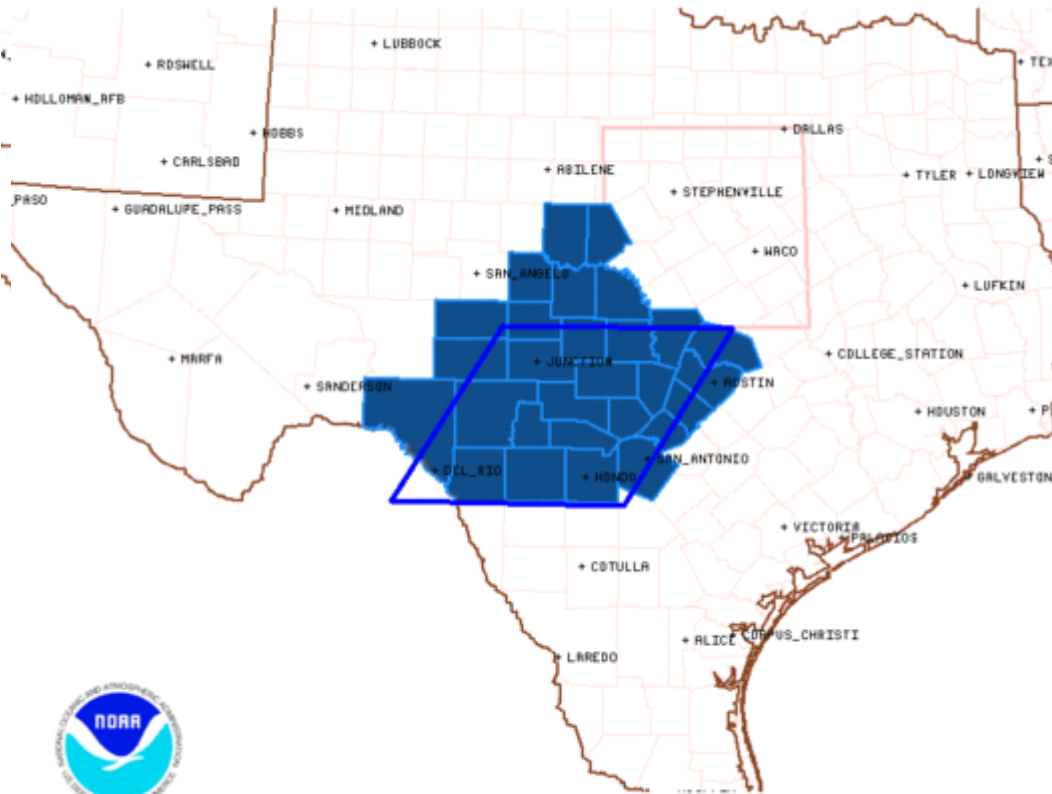
Issued by Storm Prediction Center in Norman, OK

Initially issued for the Rio Grande and southern Edwards Plateau

From 7:55 pm to 2:00 am on April 27th, 2015

Primary Threats Included:

- Large Hail to 2" in diameter
- Damaging wind gusts to 70 mph



**Severe Thunderstorm Watch # 123 - Valid from 755 PM until 200 AM CDT**

NOAA/NWS/Storm Prediction Center

Updated: 20150427/0103 UTC

Hazard	Tornadoes	EF2+ Tornadoes	Severe Wind	65 kt+ Wind	Severe Hail	2"+ Hail
Likelihood	Low	Very Low	Moderate	Low	Moderate	Moderate



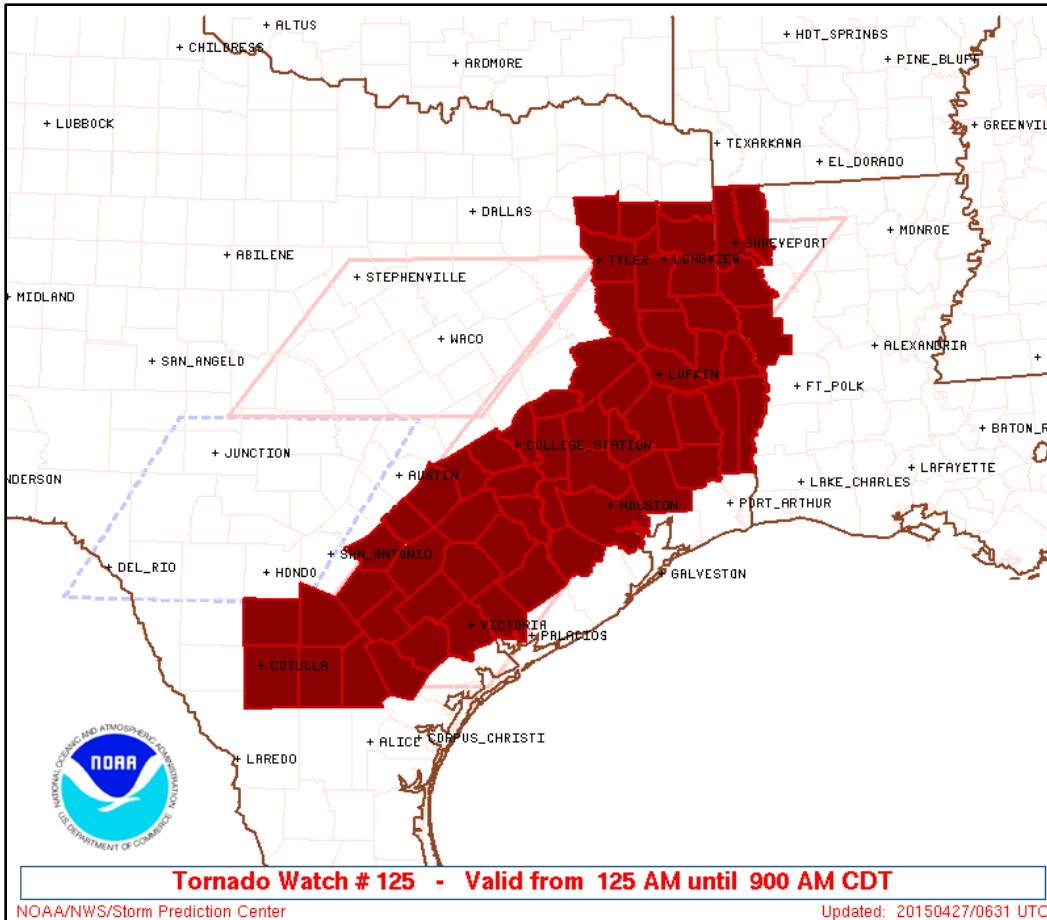
# Tornado Watch #125

Issued by Storm Prediction Center in Norman, OK

Initially issued for areas along and east of Interstate 35.

From 1:25 am to 7:35 am on April 27th, 2015

- Primary Threats Included:
- Isolated tornadoes with wind gusts to 75 mph possible
  - Large Hail to 2" in diameter



<b>Hazard</b>	<b>Tornadoes</b>	<b>EF2+ Tornadoes</b>	<b>Severe Wind</b>	<b>65 kt+ Wind</b>	<b>Severe Hail</b>	<b>2"+ Hail</b>
<b>Likelihood</b>	Moderate	Low	Moderate	Moderate	Moderate	Moderate

# Severe Thunderstorm Warning #45



Severe Thunderstorm Warning  
Valid until April 22nd, 2015 at 3:15 PM CDT

@NWSSanAntonio

Created Wednesday April 22nd, 2015 at 3:06 PM CDT

Central Atascosa County

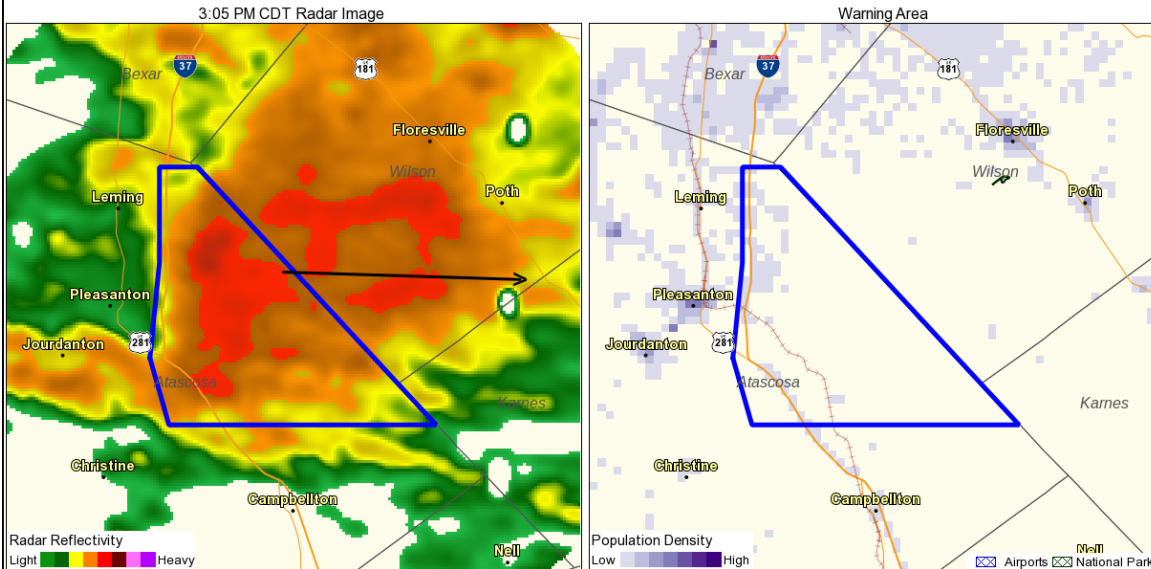
2:41 pm – 3:15 pm 4/22/15

Reports:

2:55 pm...0.70 in. hail...2 N Pleasanton

2:57 pm...0.70 in. hail...3 W Leming

3:15 pm...2.36 in. of rain...5 N Pleasanton



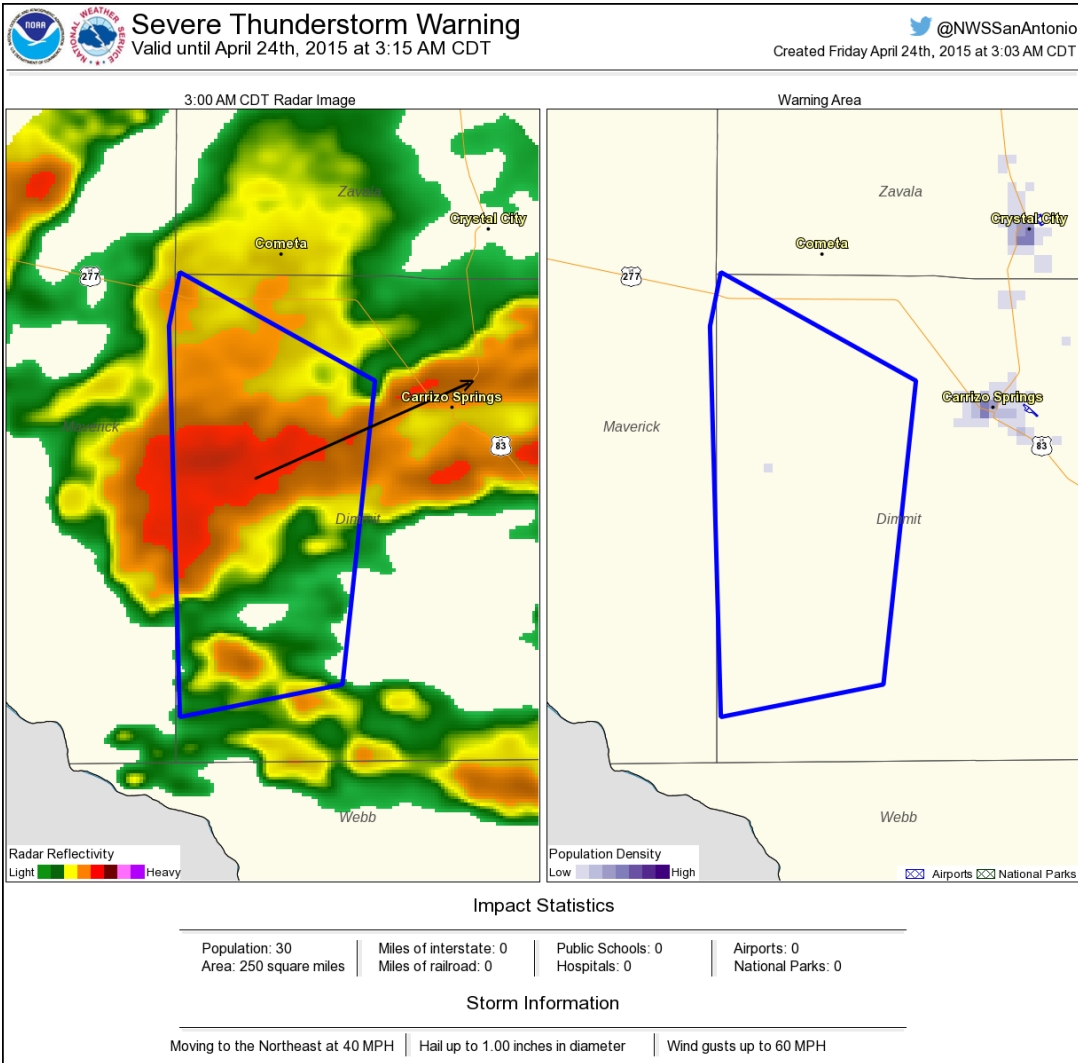
## Impact Statistics

Population: 2,564	Miles of interstate: 20	Public Schools: 0	Airports: 0
Area: 188 square miles	Miles of railroad: 11	Hospitals: 0	National Parks: 0

## Storm Information

Moving to the East at 45 MPH | Hail up to 1.00 inches in diameter | Wind gusts up to 60 MPH

# Severe Thunderstorm Warning #46



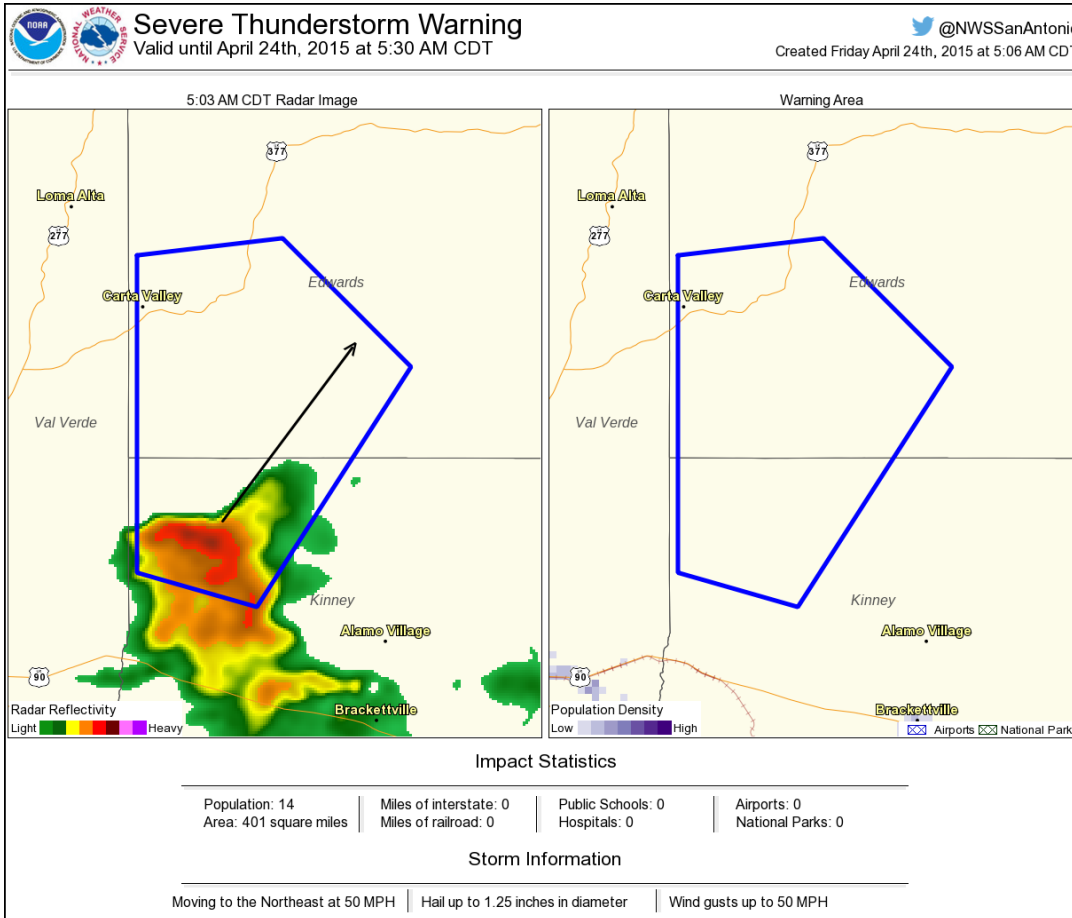
Central Atascosa County

2:23 am – 3:15 am 4/24/15

Reports:



# Severe Thunderstorm Warning #47




Southwestern Edwards County, Northwestern Kinney County, and Southeastern Val Verde Counties.

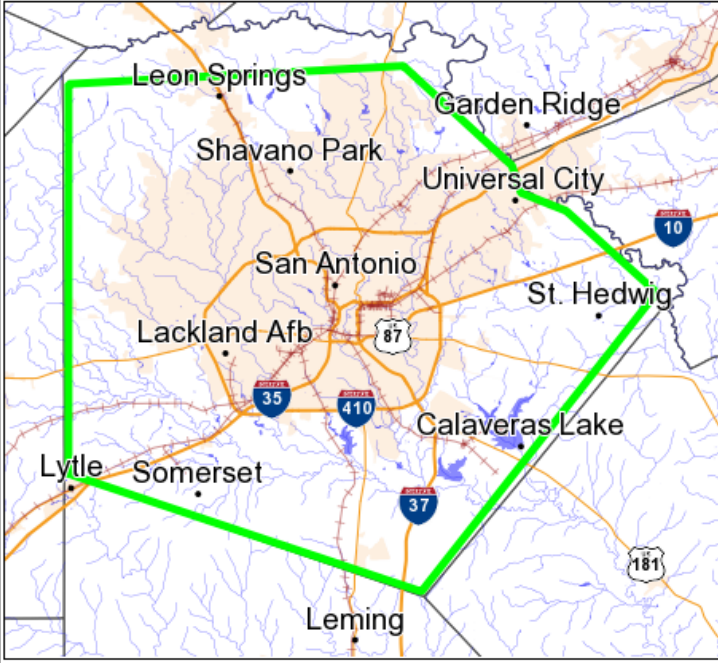
4:38 am – 5:30 am 4/24/15

Reports:

# Flash Flood Warning #4

 **Flash Flood Warning**  
@NWSSanAntonio

Valid until April 24th, 2015 at 8:00 AM CDT



Affected Population: 1,702,575      Miles of interstate: 156  
Public Schools: 512                      Airports: 3  
Area: 1119 square miles                  Miles of railroad: 188  
Hospitals: 35                                  National Parks: 1

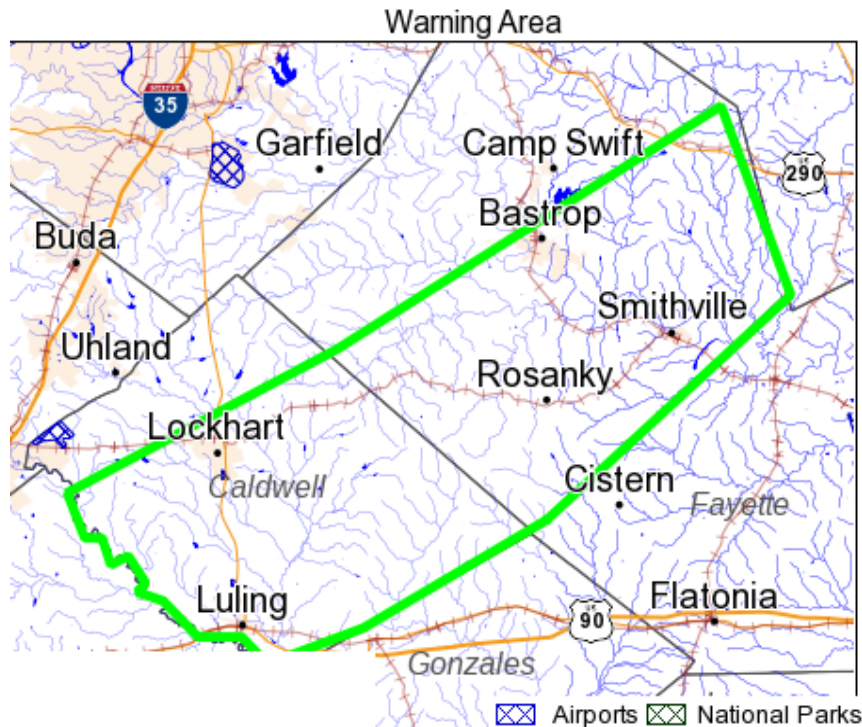
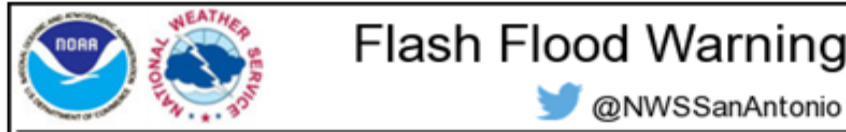
Created Friday April 24th, 2015 at 3:49 PM CDT

Bexar County

5:02 am – 8:00 am 4/24/15

Reports:  
730 am...Water over the low  
water crossing at south  
Callaghan Rd and Hwy 90...  
2 NE Lackland AFB

# Flash Flood Warning #5



Caldwell and southern  
Bastrop Counties

6:30 am – 9:30 am 4/24/15

Reports:

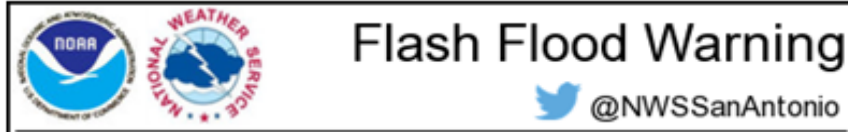
6:30 am...4.08 in. of rain...5

NNW Luling

7:15 am...Multiple roads  
closed due to flooding...2 NE  
Togo

7:36 am...Flash flooding due  
to heavy rain over the  
amount of 40 minute  
period...2 NNE Fentress

# Flash Flood Warning #6

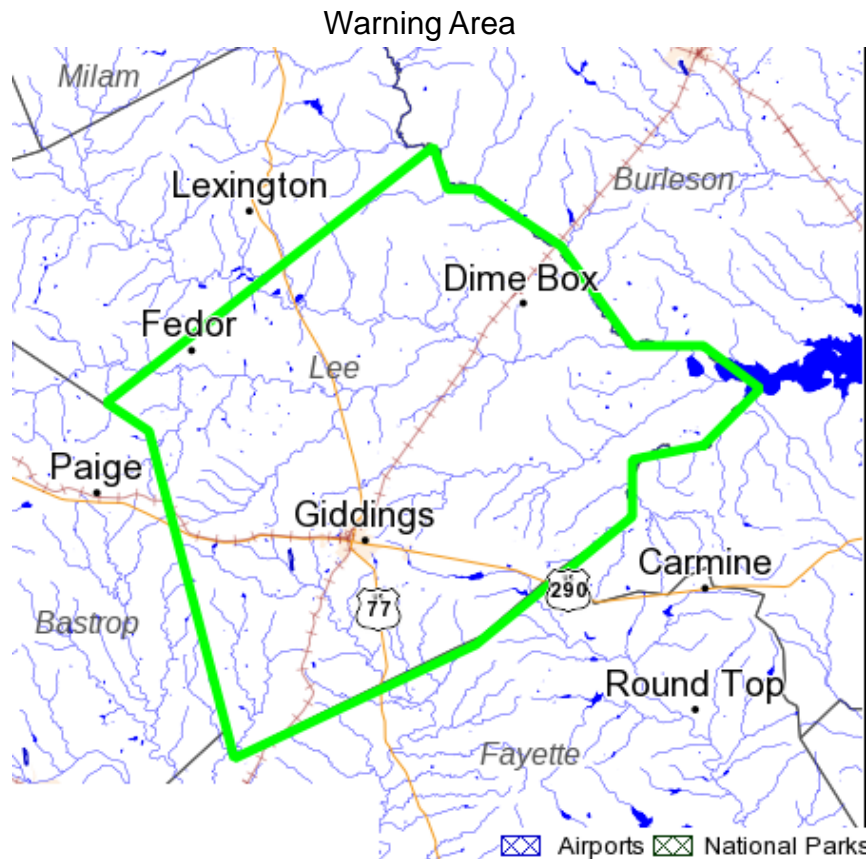


Lee County

8:19 am – 9:45 am 4/24/15

Reports:

9:00 am...Hwy 20 at Callihan Rd inundated with water.  
Report gathered via Twitter.

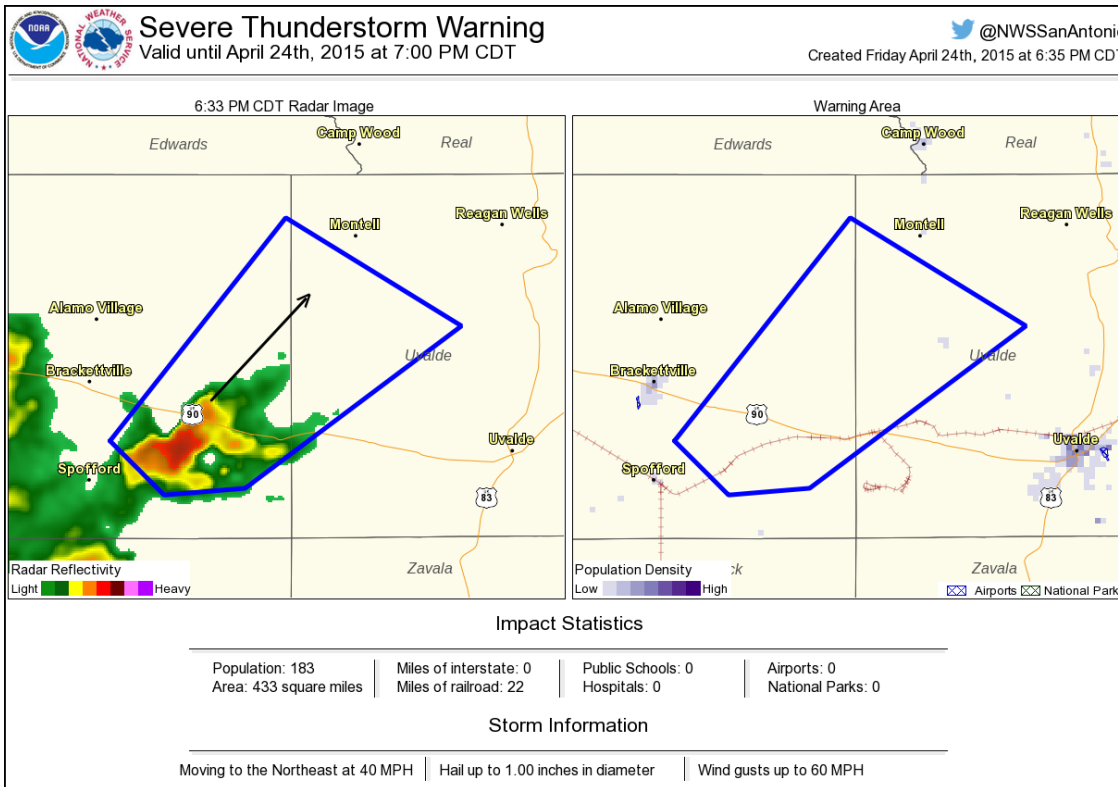


# Severe Thunderstorm Warning #48

Southeastern Kinney and  
West Central Uvalde  
Counties

6:22 pm – 7:00 pm 4/24/15

Reports:

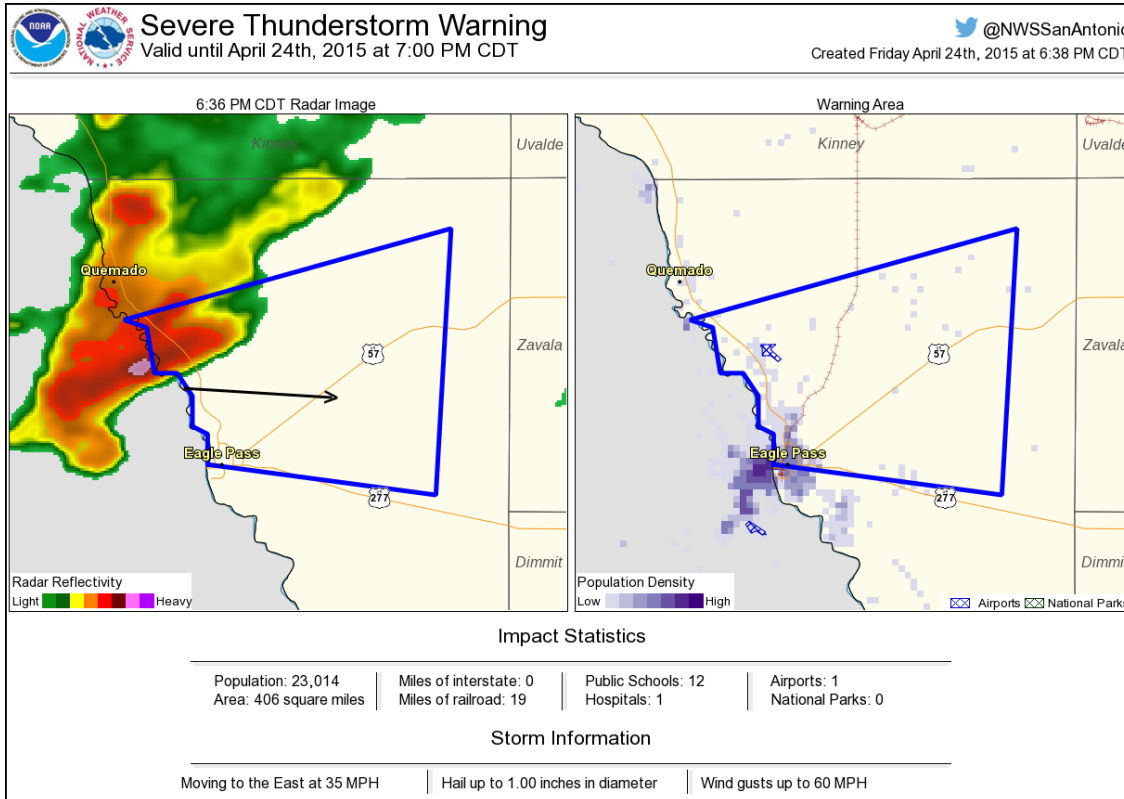


# Severe Thunderstorm Warning #49

Northern Maverick County

6:37 pm – 7:00 pm 4/24/15

Reports:  
6:50 pm...1.00 in. hail...1 W  
Laughlin AFB



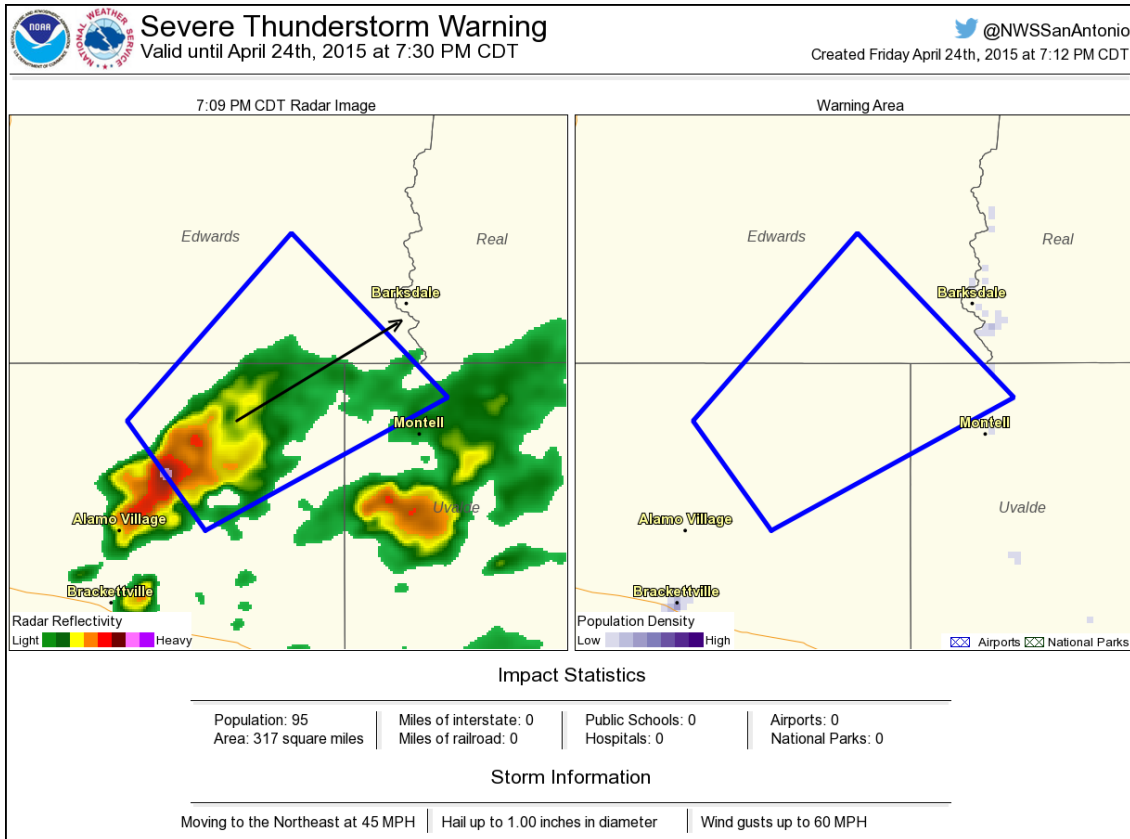


# Severe Thunderstorm Warning #50

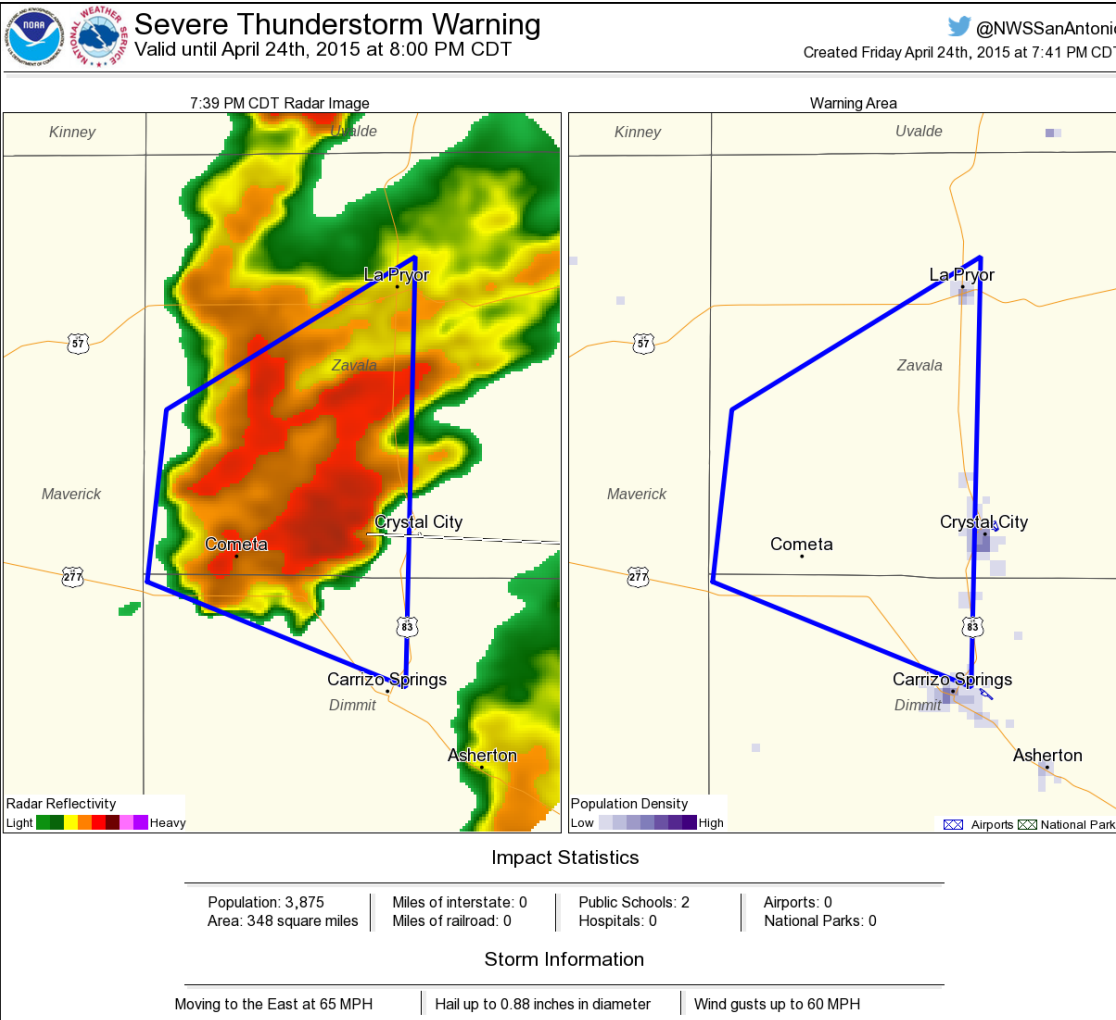
South Central Edwards,  
Northeastern Kinney,  
Northwestern Uvalde  
Counties

7:00 pm – 7:30 pm 4/24/15

Reports:



# Severe Thunderstorm Warning #51



Northeastern Maverick,  
Western Zavala, and  
Northwestern Dimmit  
Counties.

7:05 pm – 8:00 pm 4/24/15

Reports:

7:48 pm...Tornado...2 NW  
Winter Haven

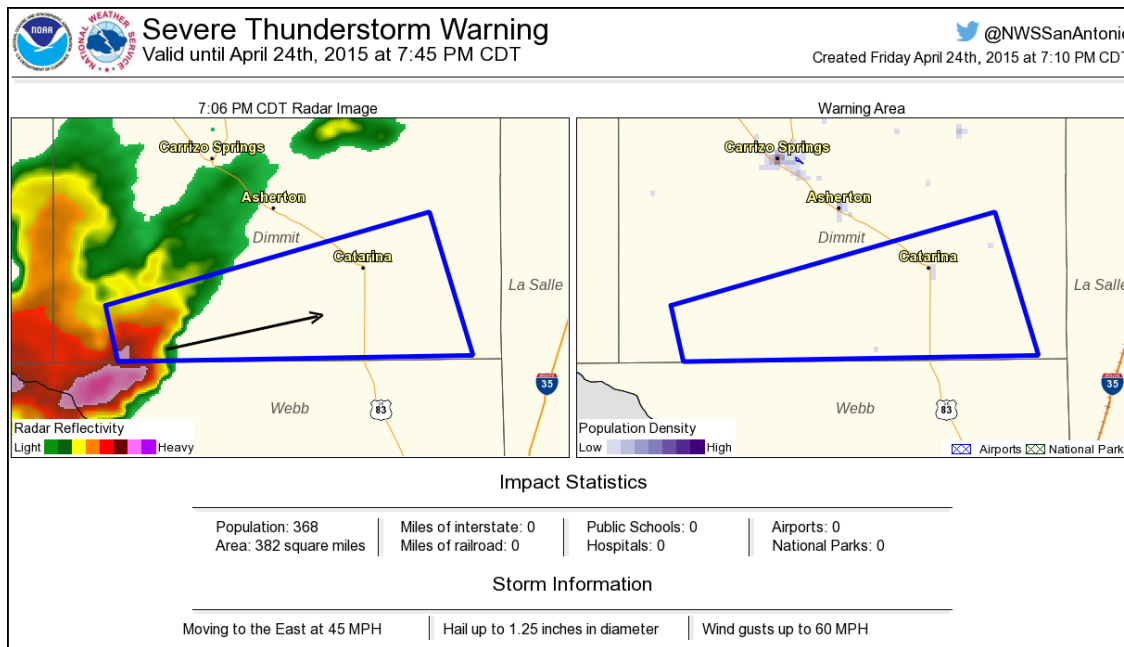
7:58 pm...Funnel Cloud...8 N  
Carrizo Springs

# Severe Thunderstorm Warning #52

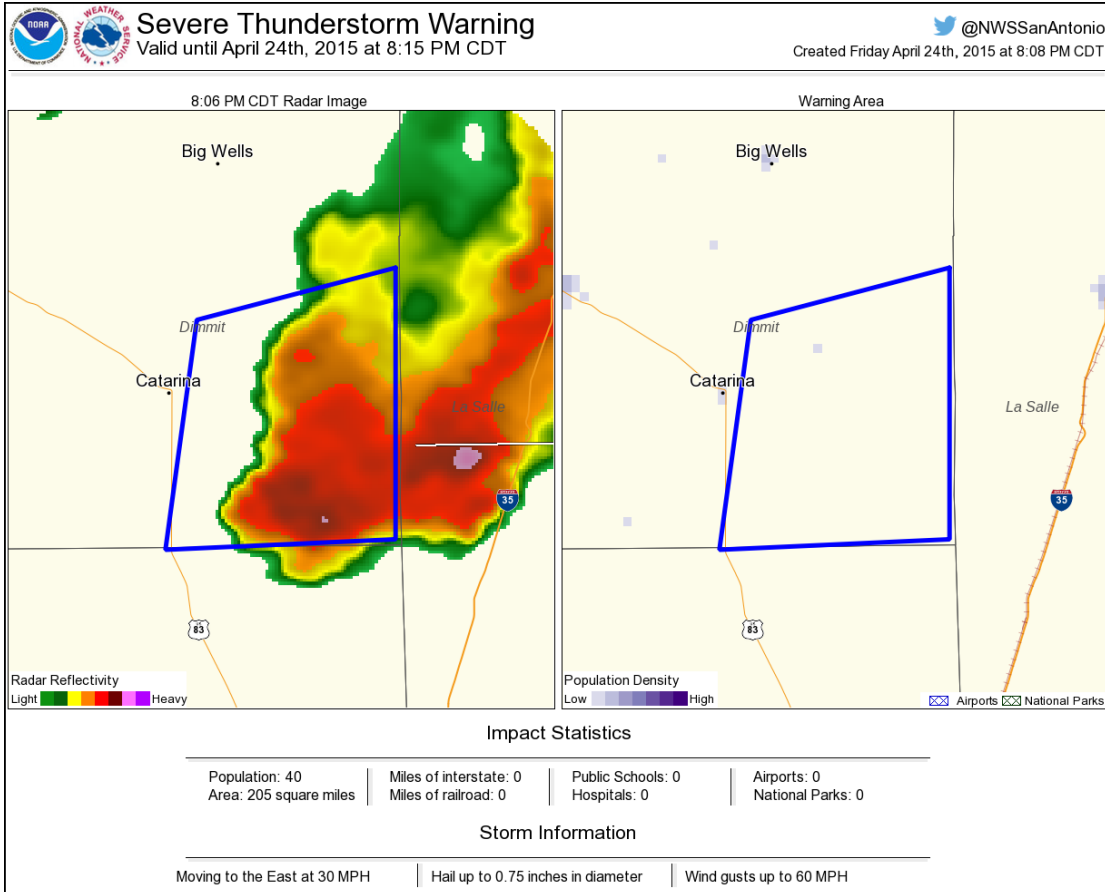
Southern Dimmit County.

7:09 pm – 7:45 pm 4/24/15

Reports:



# Severe Thunderstorm Warning #53

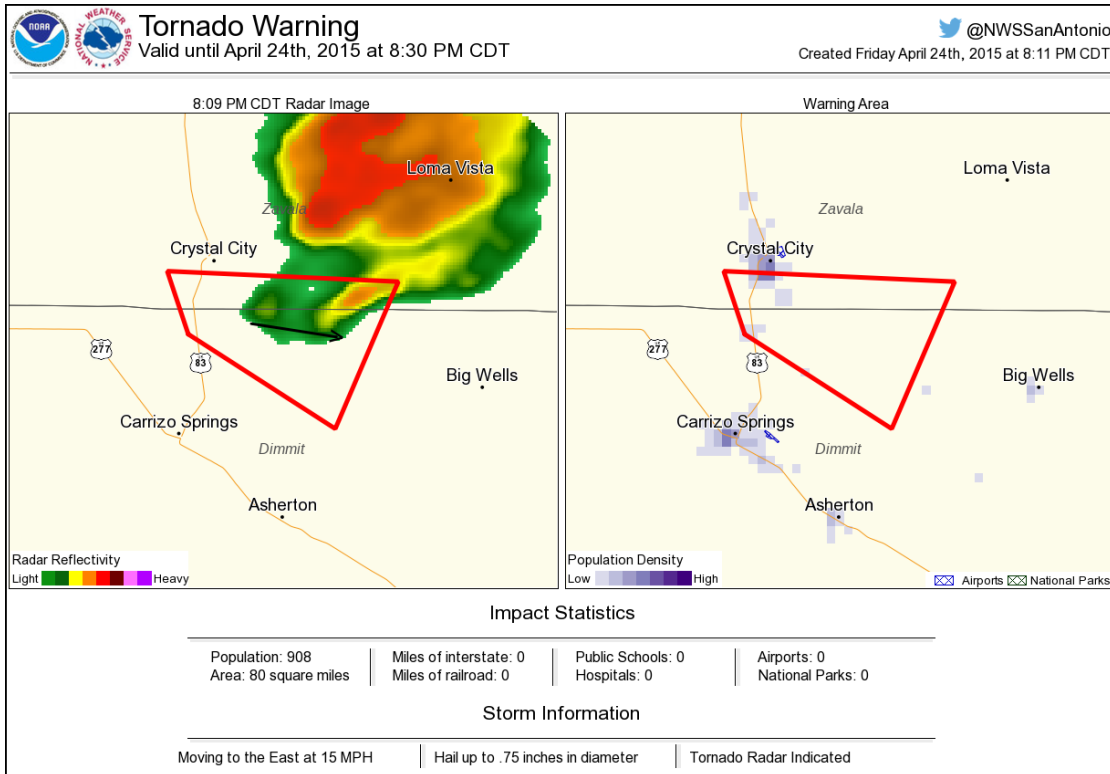


Southeastern Dimmit  
County.

7:40 pm – 8:15 pm 4/24/15

Reports:

# Tornado Warning #1



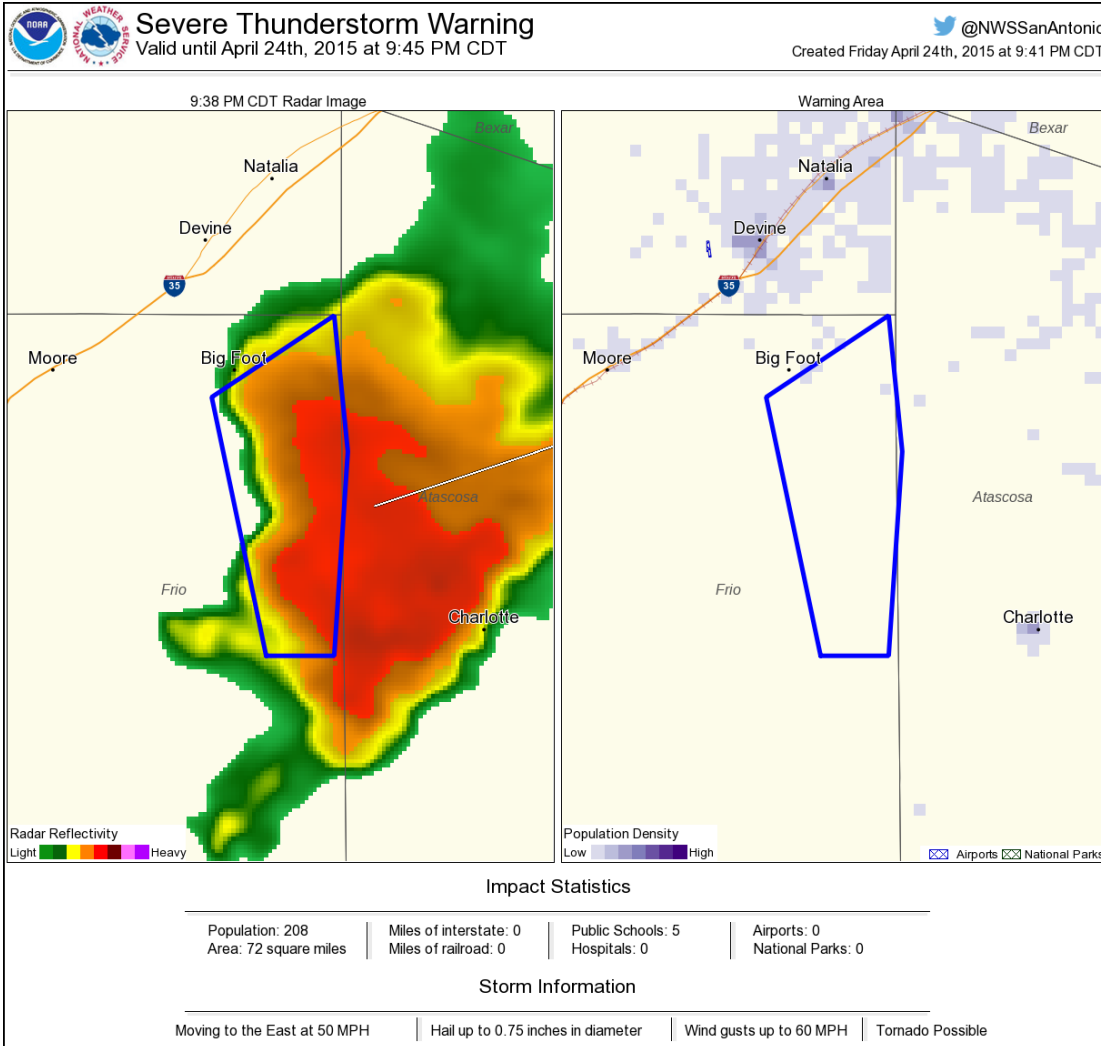
South Central Zavala and North Central Dimmit Counties.

7:53 pm – 8:30 pm 4/24/15

Reports:

7:58 Funnel Cloud...8 N Carrizo Springs

# Severe Thunderstorm Warning #54



Central Frio County.

8:42 pm – 9:45 pm 4/24/15

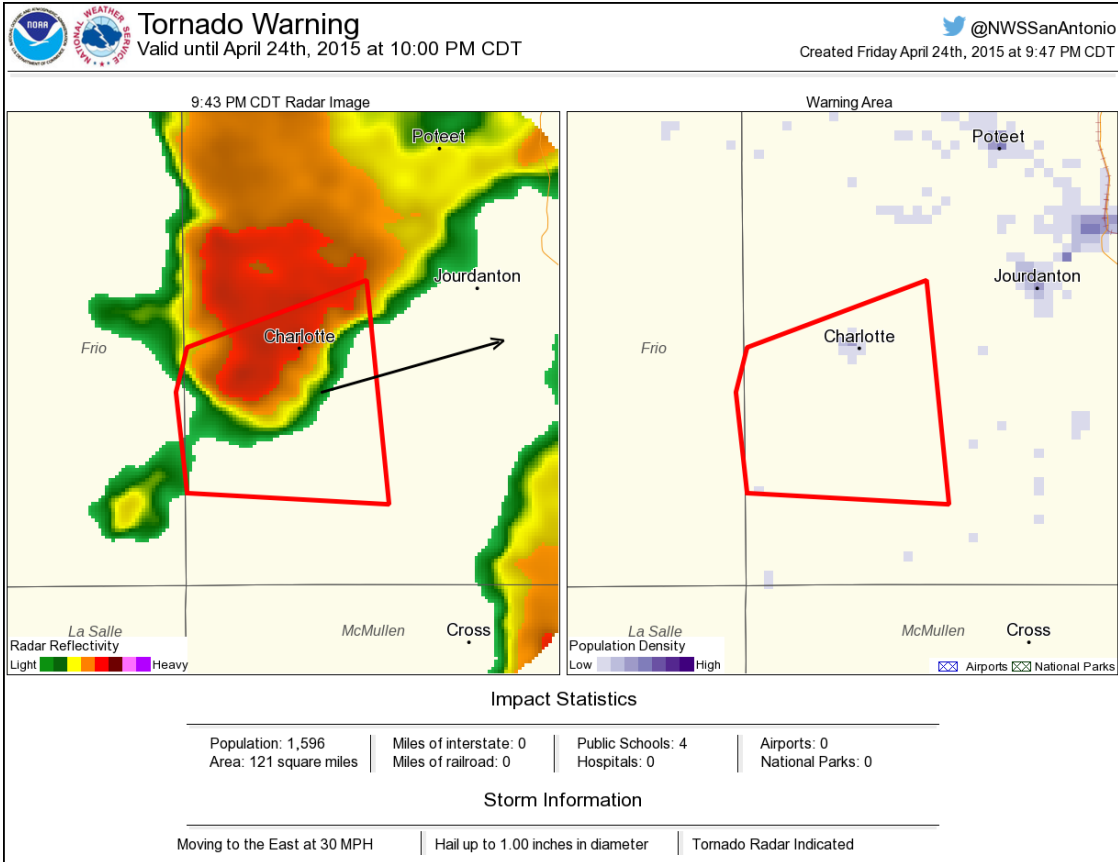
Reports:

9:10 pm...1.00 in.

hail...Pearsall



# Tornado Warning #2



Southwestern Atascosa and  
Southeastern Frio Counties.

9:10 pm – 10:00 pm 4/24/15

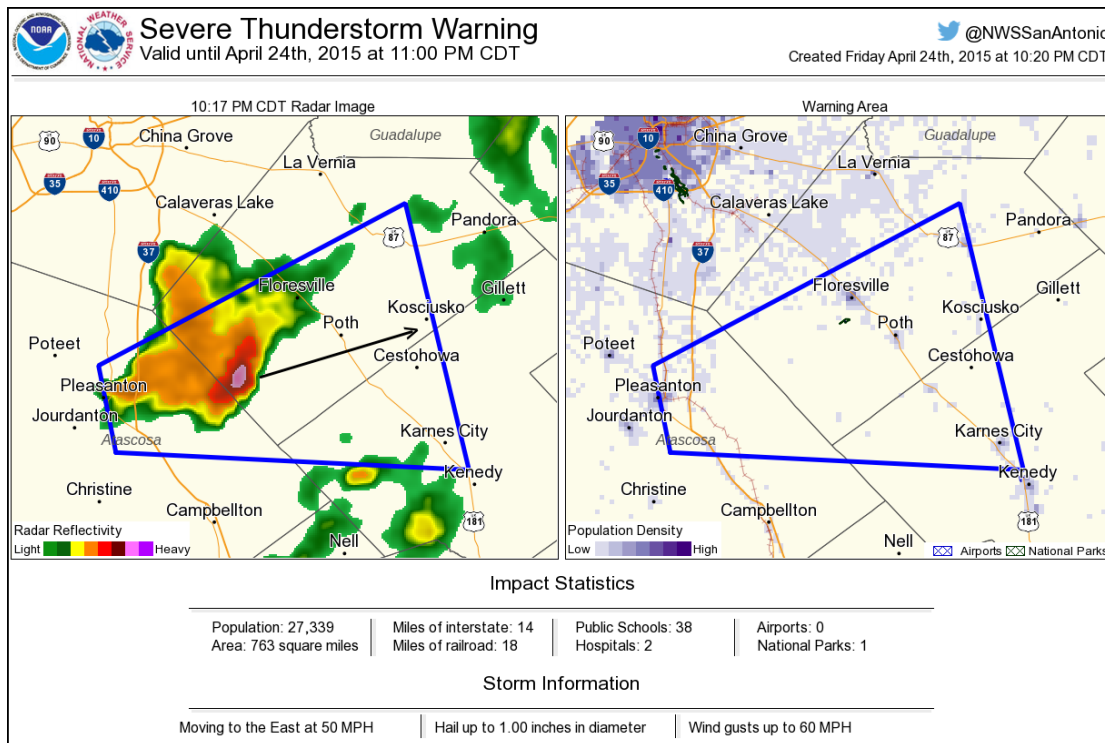
Reports:

# Severe Thunderstorm Warning #55

Central Atascosa, West  
Central Karnes, and  
Southwestern Wilson  
Counties.

9:55 pm – 11:00 pm 4/24/15

Reports:

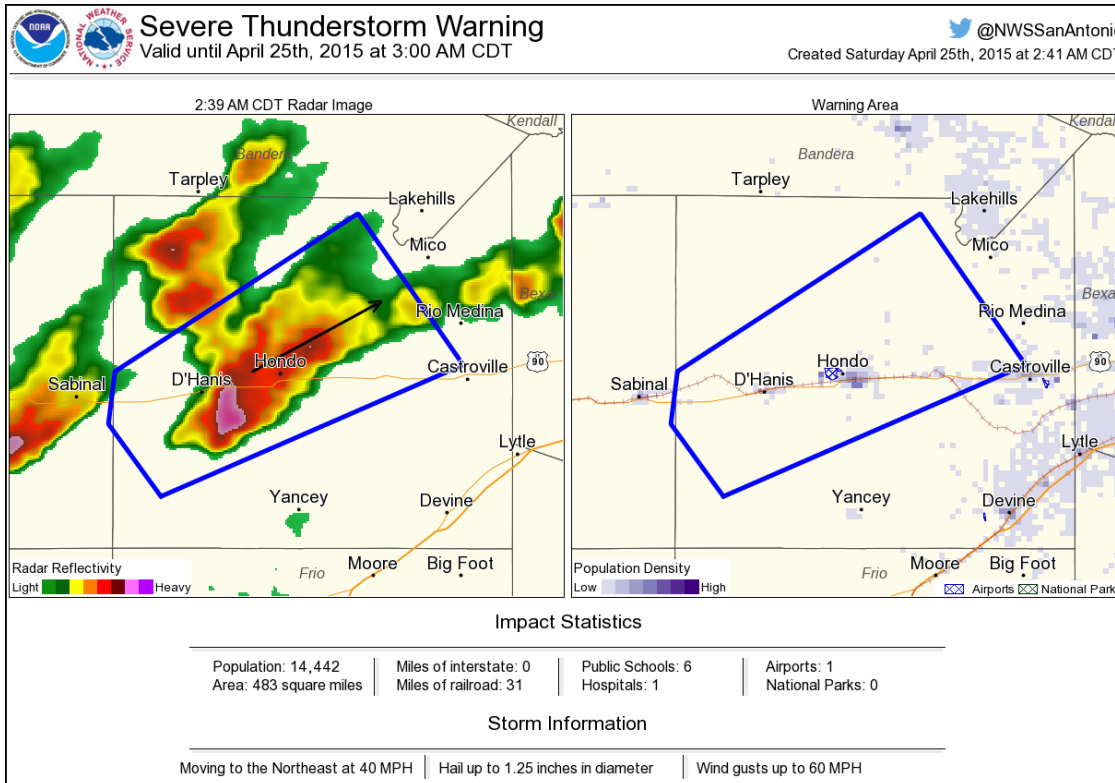


# Severe Thunderstorm Warning #56

Central Medina County

2:26 am – 3:00 am 4/25/15

Reports:  
2:45 am...0.50 in. hail...2 SE  
Hondo

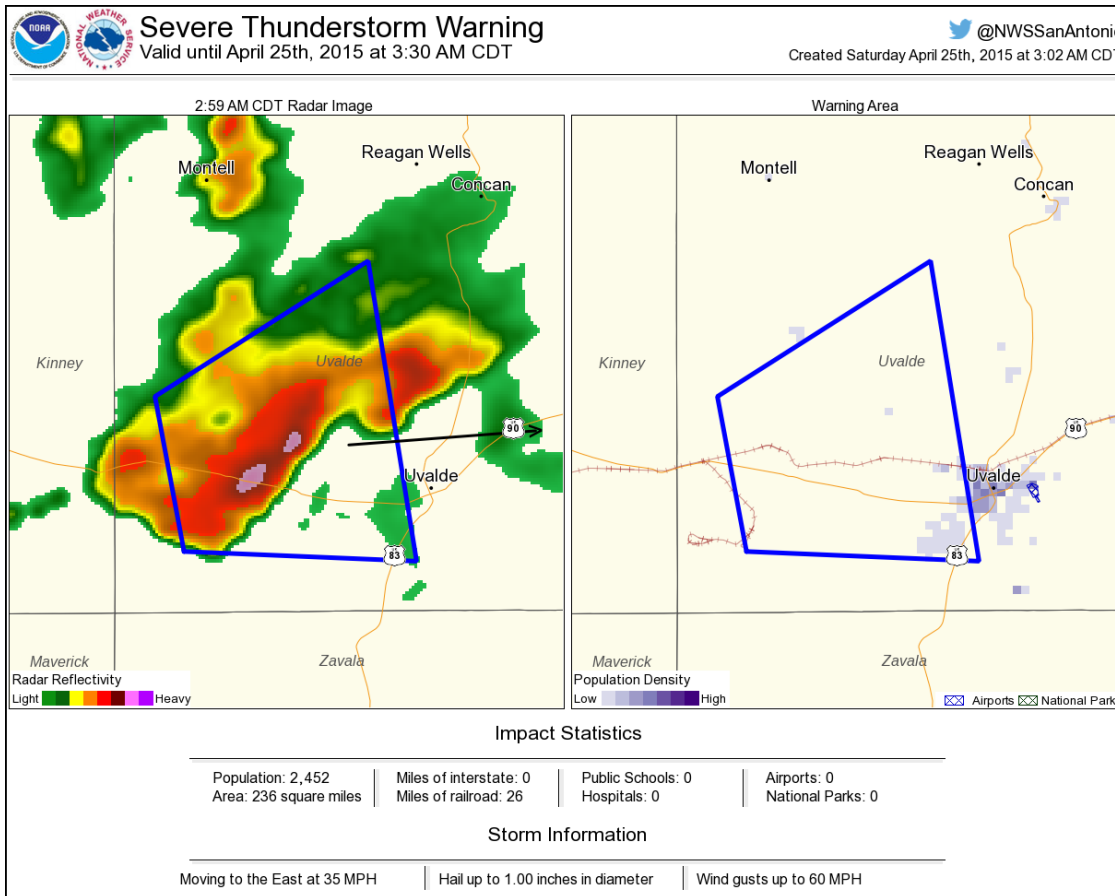


# Severe Thunderstorm Warning #57

Southeastern Kinney and  
Southwestern Uvalde  
Counties

2:38 am – 3:30 am 4/25/15

Reports:



# Severe Thunderstorm Warning #58

Southwestern Medina and  
Southeastern Uvalde  
Counties

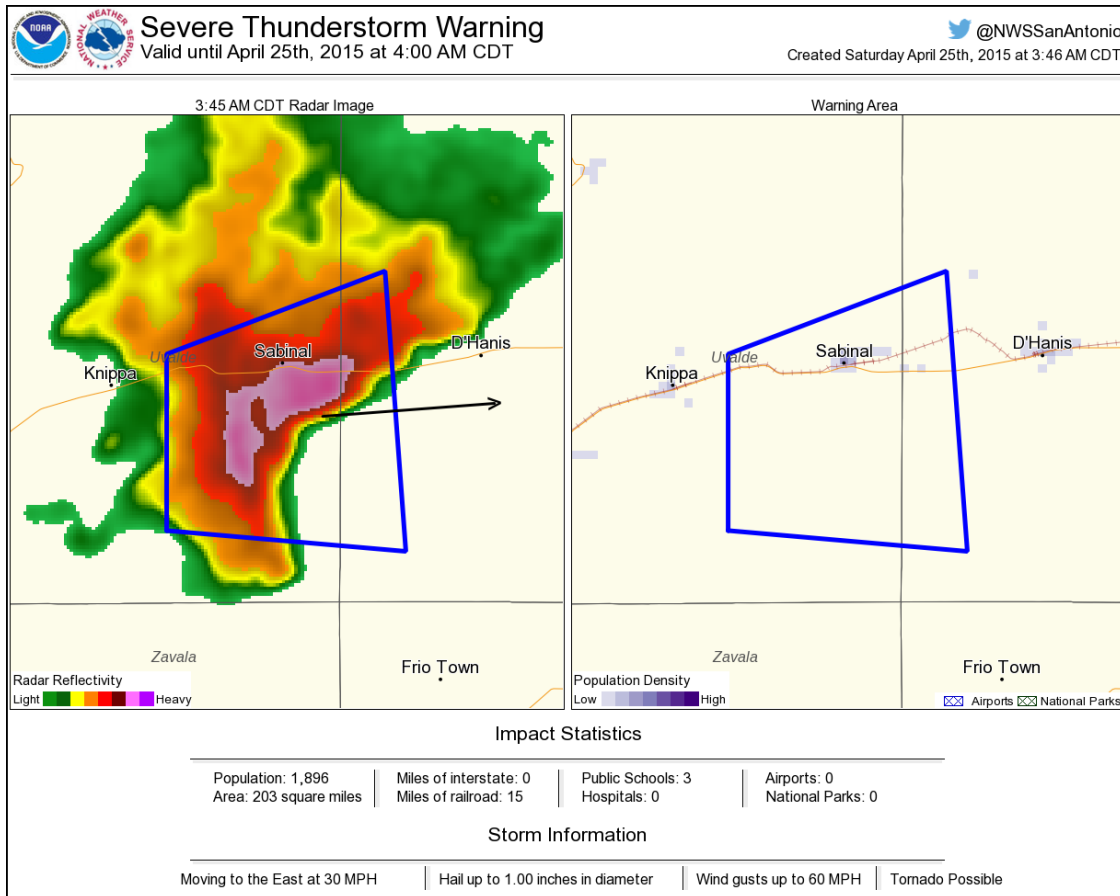
3:09 am – 4:00 am 4/25/15

Reports:

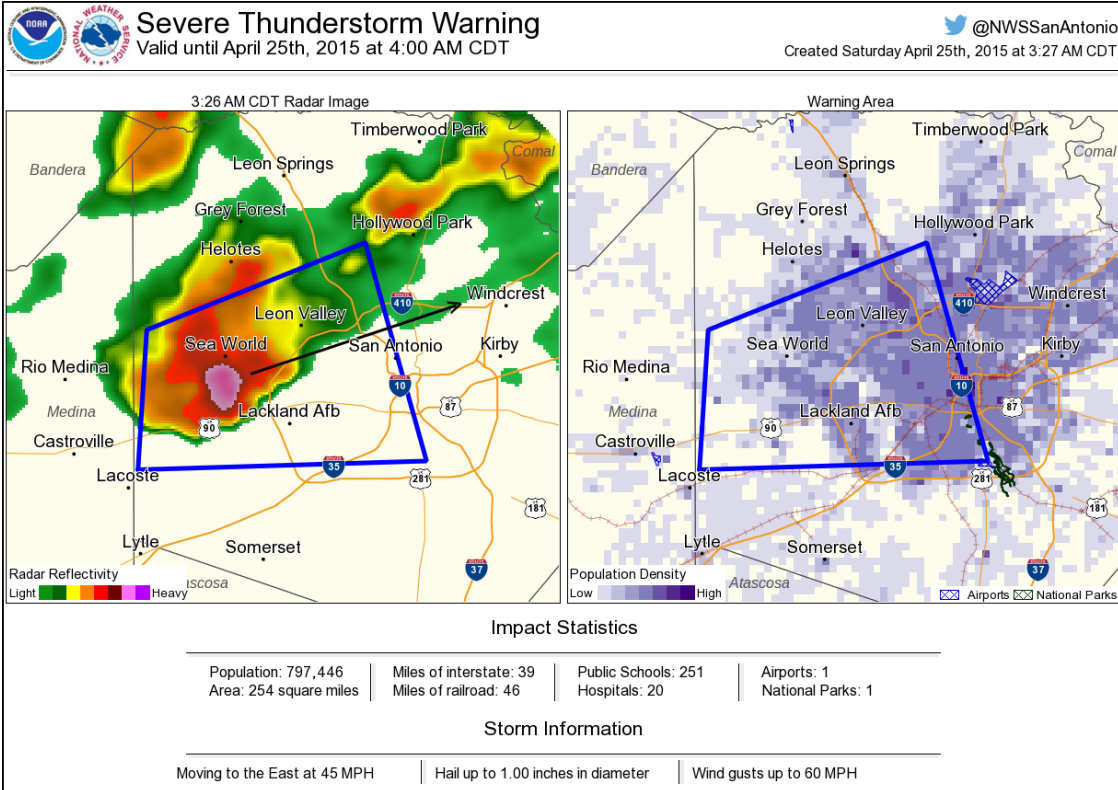
3:20 am...0.62 in. hail...1 NE  
Uvalde

3:50 am...TSTM wind  
damage...10 S Sabinal

3:50am...TSTM wind  
damage...6 S Sabinal



# Severe Thunderstorm Warning #59



East Central Medina and  
West Central Bexar Counties

3:14 am – 4:00 am 4/25/15

Reports:

3:15 am...TSTM wind

damage...5 E Rio Media

3:40 am...2.00 in. hail...1 SSE

Sea World

3:43 am...0.50 in. hail...3 SSW

Leon Valley

3:51 am...0.88 in. hail...Sea

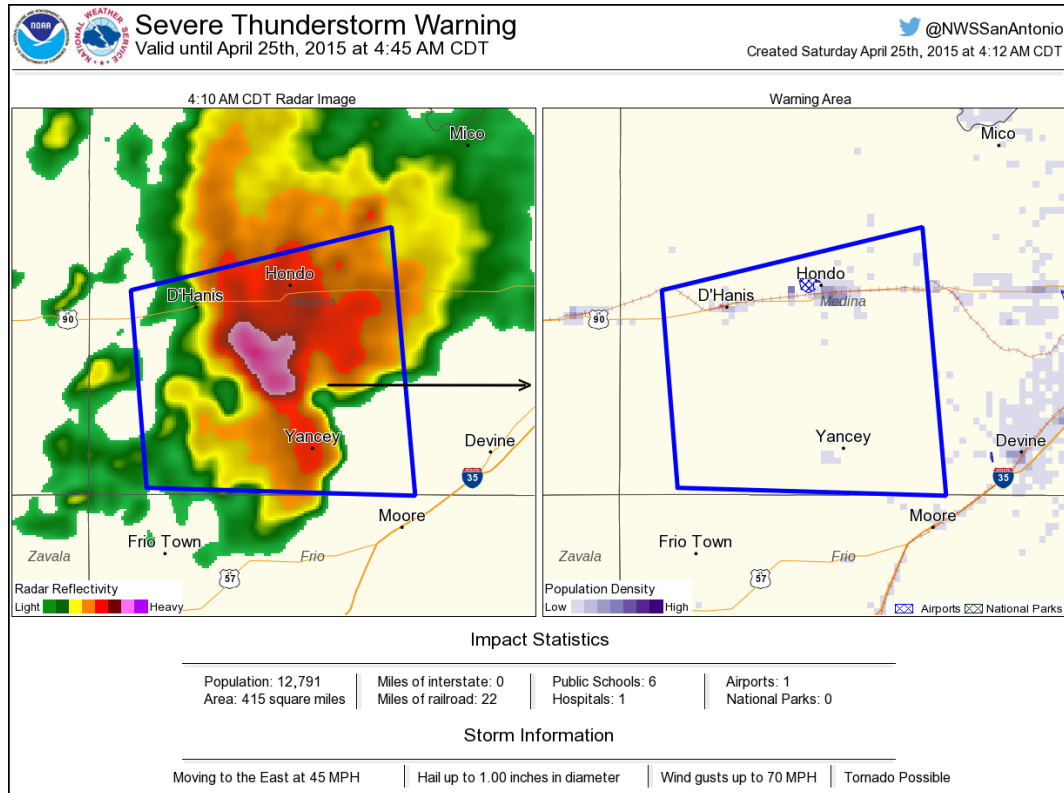
World

3:55 am...1.25 in. hail...3

WSW Leon Valley



# Severe Thunderstorm Warning #60



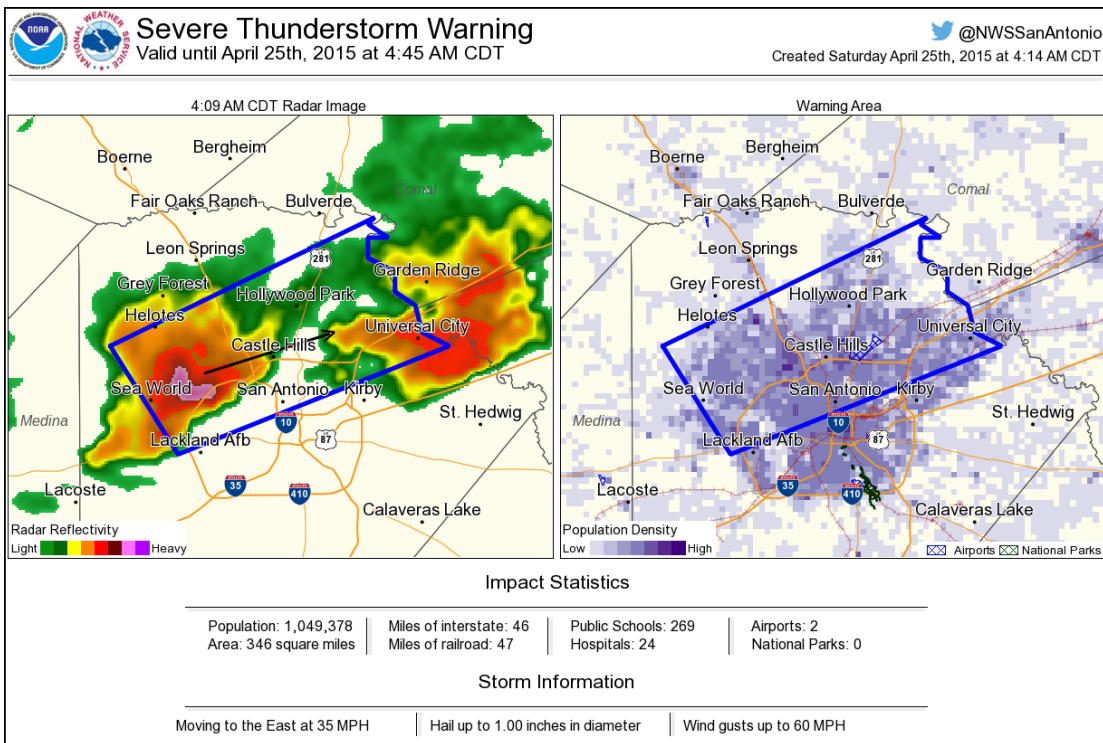
Southwestern Medina and  
Southeastern Uvalde County

3:54 am – 4:45 am 4/25/15

Reports:

8:54 am...TSTM wind  
damage...Hondo

# Severe Thunderstorm Warning #61



Northern Bexar County

4:07 am – 4:45 am 4/25/15

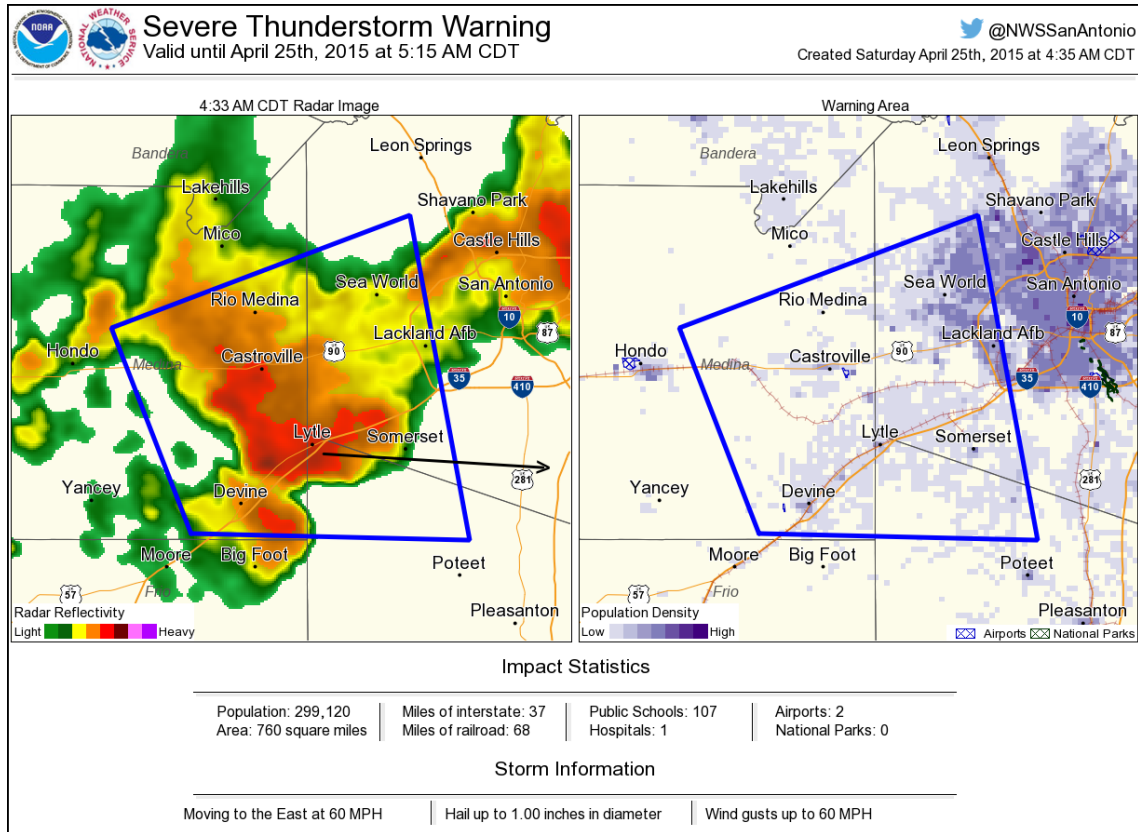
Reports:

9:15 am...1.00 in. hail...1 SE  
Leon Valley

9:20 am...1.00 in. hail...3  
WNW Castle Hills

9:45 am...1.00 in. hail...2 SW  
Leon Valley

# Severe Thunderstorm Warning #62



Southern Medina,  
Northwestern Atascosa and  
Southwestern Bexar Counties

4:19 am – 5:15 am 4/25/15

Reports:



4:45 am...Several trees  
knocked down by  
thunderstorm winds...4 E Rio  
Medina

4:49 am...1 in. Hail...2 SW  
Sea World

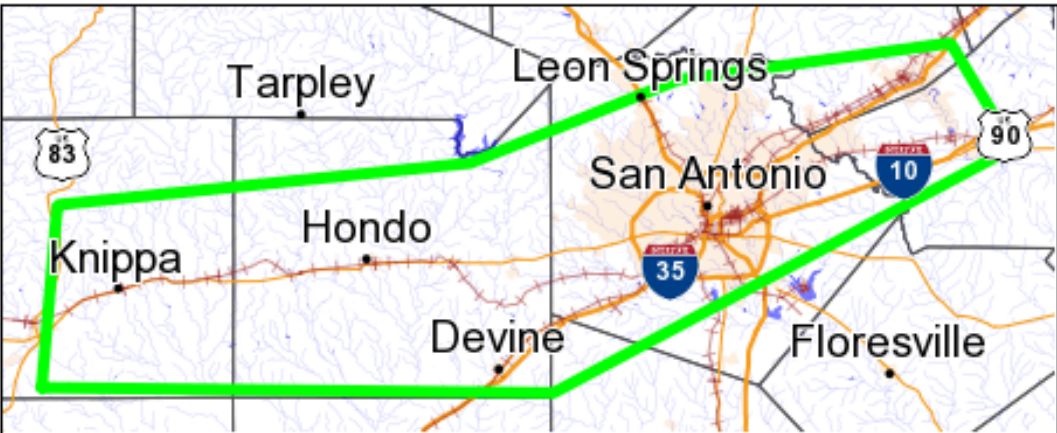
4:50 am...Large 2.5 foot  
diameter oak tree blown  
onto home...Lytle

4:55 am...1.25 in. hail...Divine

# Flash Flood Warning #7

  **Flash Flood Warning**  
@NWSSanAntonio

Valid until April 25th, 2015 at 7:30 AM CDT



Affected Population: 1,890,518      Miles of interstate: 195  
Public Schools: 593                      Airports: 9  
Area: 2975 square miles              Miles of railroad: 322  
Hospitals: 40                              National Parks: 1

Created Saturday April 25th, 2015 at 6:53 AM CDT

Southwestern Guadalupe,  
Southeastern Comal,  
Medina, Northwest Atascosa,  
Southeastern Uvalde and  
Bexar Counties

4:31 am – 7:30 am 4/25/15

Reports:

5:14 am...Water rescue at  
Old Oconnor

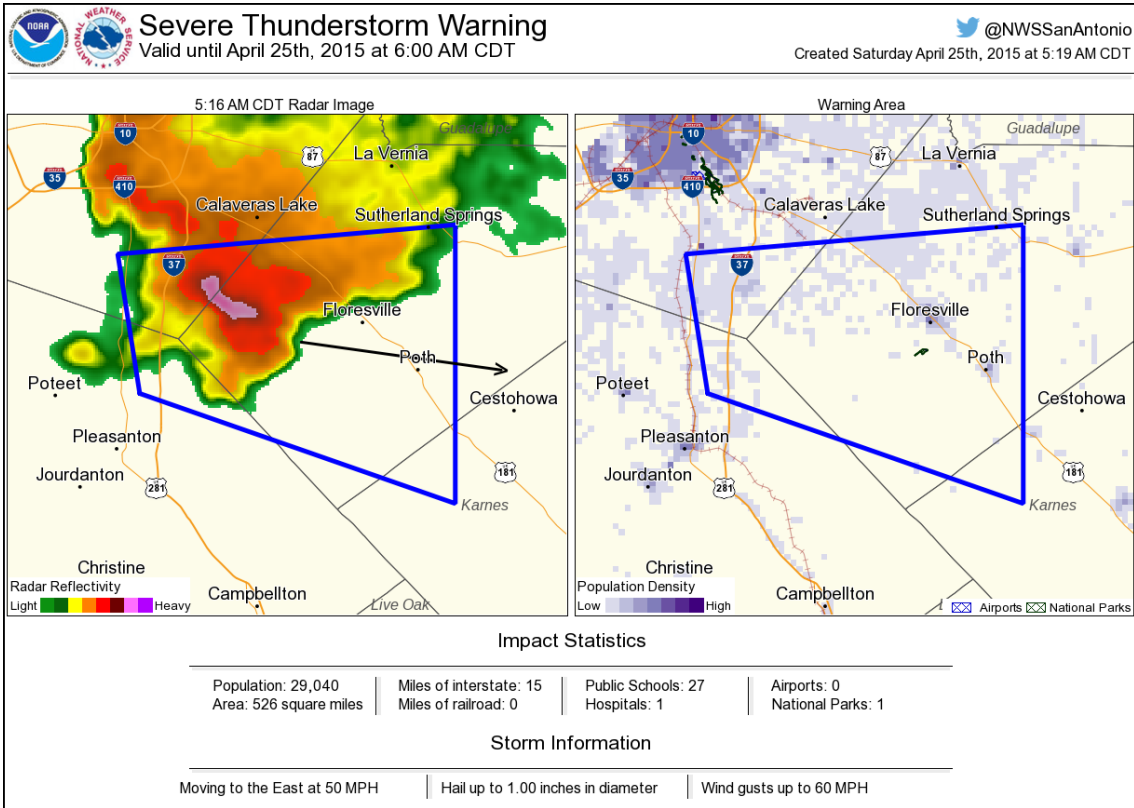
5:23 am...Water recue at  
Mockingbird

5:45 am...2.49 in...1 NNE Live  
Oak

5:51 am...Water rescue in  
San Antonio

6:30 am...Numerous low  
water crossing closed

# Severe Thunderstorm Warning #63



Northern Atascosa,  
Southwestern Bexar, West  
Central Karnes, Southwestern  
Wilson Counties

4:53 am – 6:00 am 4/25/15

Reports:

5:15 am...0.75 in. hail...9

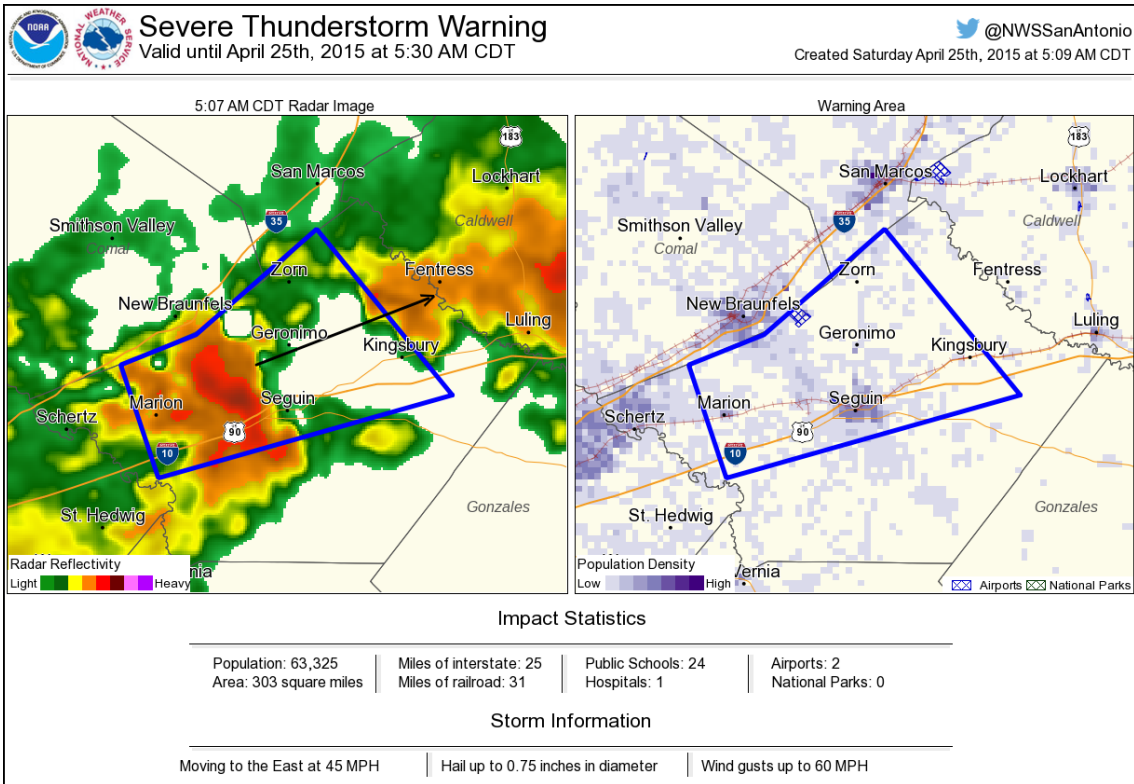
WNW Floresville

5:20 am...1.75 in. hail...4

WNW Floresville

5:25 am...1 in. hail...Floresville

# Severe Thunderstorm Warning #64



Central Guadalupe and  
Southeastern Comal  
Counties

5:00 am – 5:30 am 4/25/15

Reports:

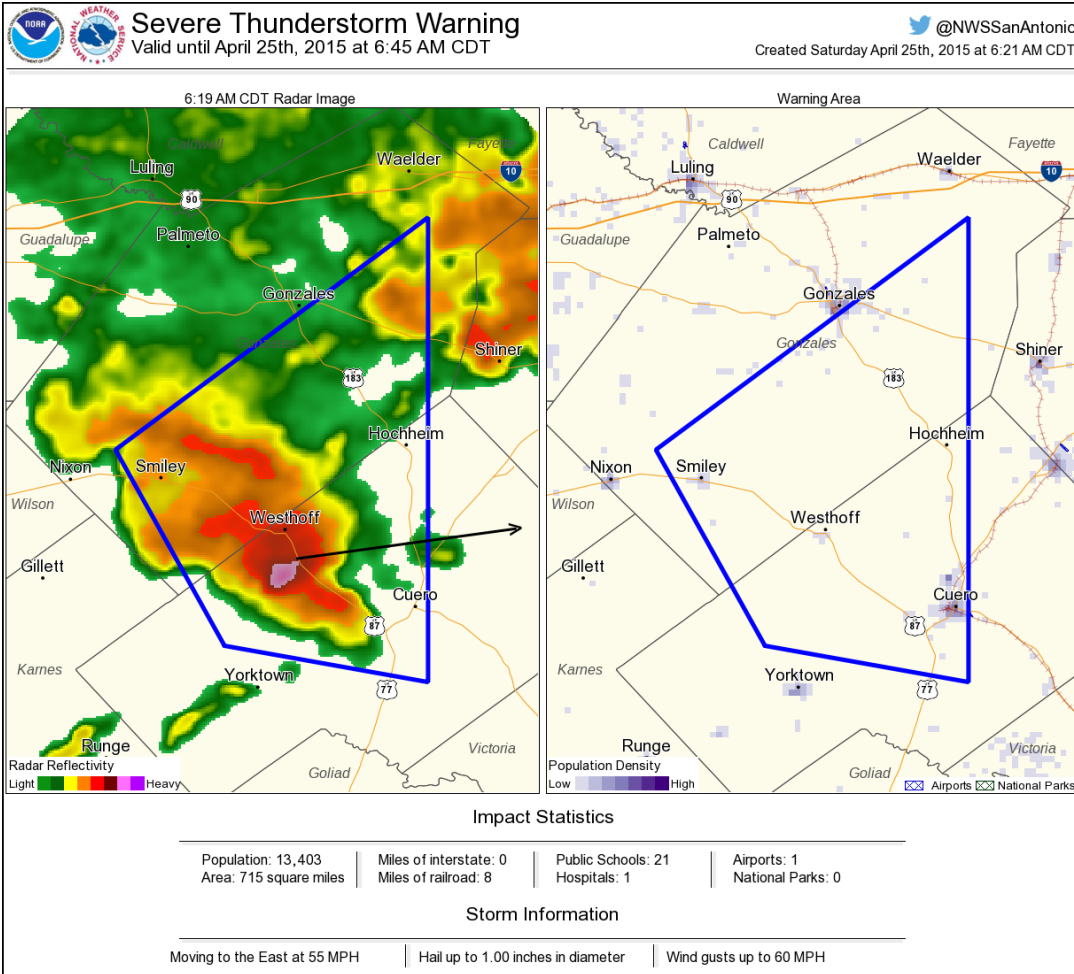
5:00 am...TSTM wind  
damage...5 N Seguin

5:00 am...Flash Flooding...3  
SSE Geronimo

5:11 am...TSTM wind  
damage...5 N Seguin



# Severe Thunderstorm Warning #65

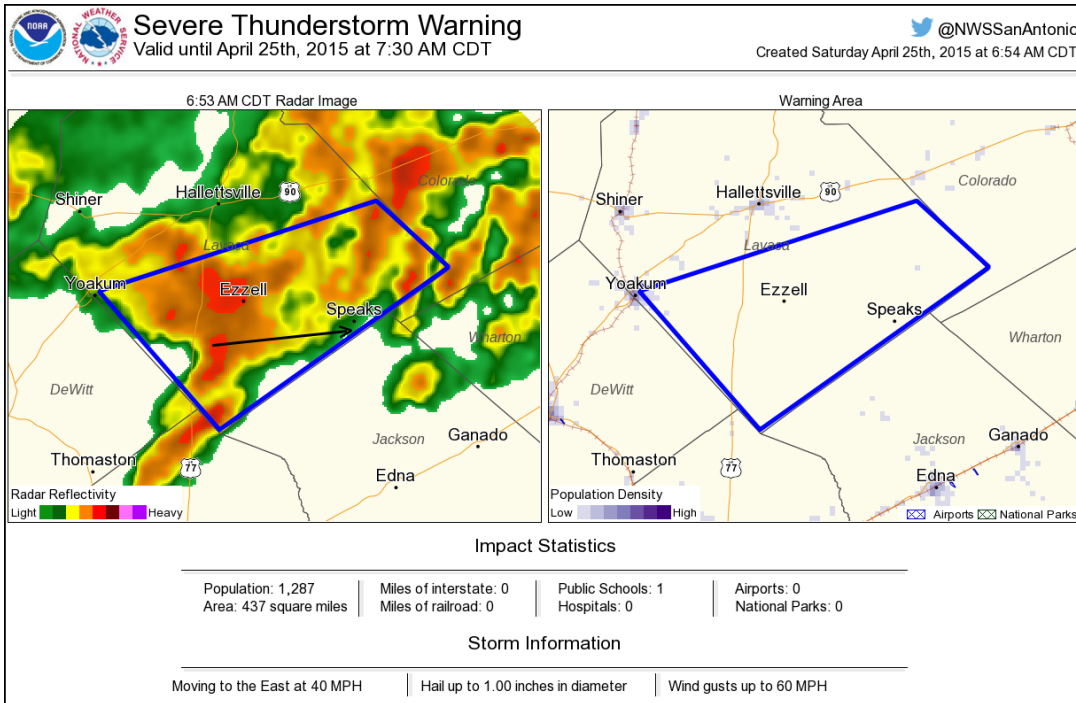


South Central Guadalupe,  
Central Dewitt, Gonzales,  
Northeastern Karnes and  
Central Wilson Counties

5:38 am – 6:45 am 4/25/15

Reports:

# Severe Thunderstorm Warning #66

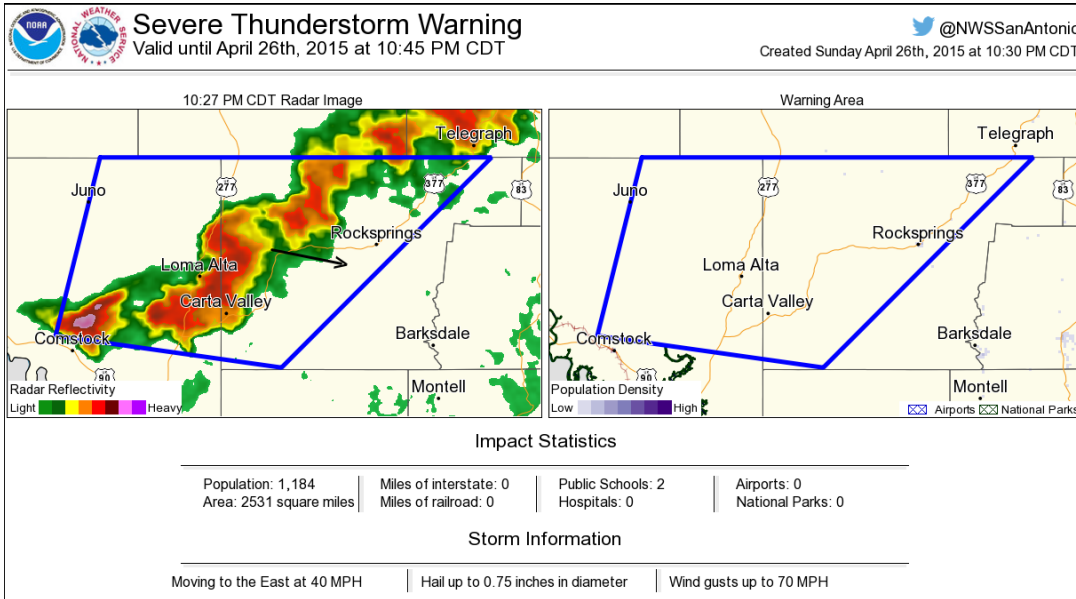


Northeastern Dewitt and  
Southern Lavaca Counties

6:34 am – 7:30 am 4/25/15

Reports:

# Severe Thunderstorm Warning #67



Edwards and Northeastern  
Val Verde Counties

9:39 pm – 10:45 am 4/26/15

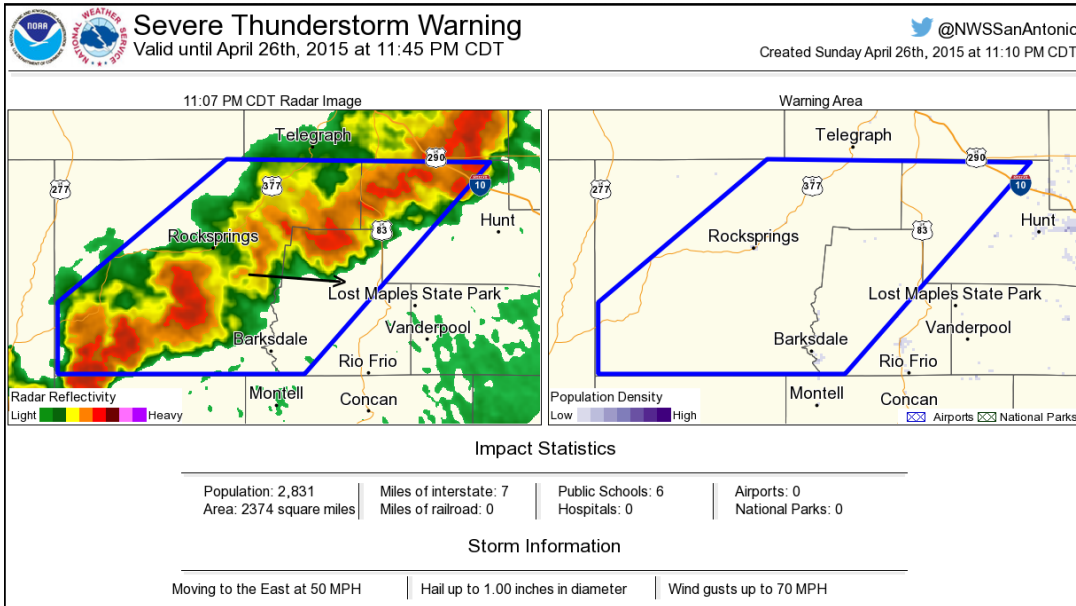
Reports:

9:39 pm...1 in. hail...2 S Juno

10:15 pm...0.88 in hail...5

NNW Comstock

# Severe Thunderstorm Warning #68



Real, Edwards, East Central Val Verde and Northwestern Kerr Counties

10:40 pm – 11:45 am 4/26/15

Reports:

# Severe Thunderstorm Warning #69



Severe Thunderstorm Warning  
Valid until April 27th, 2015 at 12:00 AM CDT

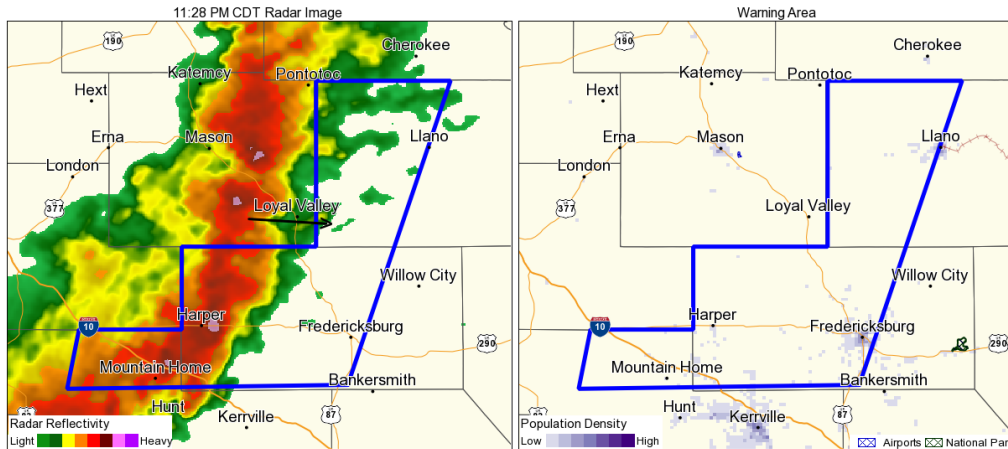
@NWSSanAntonio

Created Sunday April 26th, 2015 at 11:29 PM CDT

Western Llano, Gillespie and  
Northwestern Counties

11:04 pm – 12:00 am  
4/26/15

Reports:



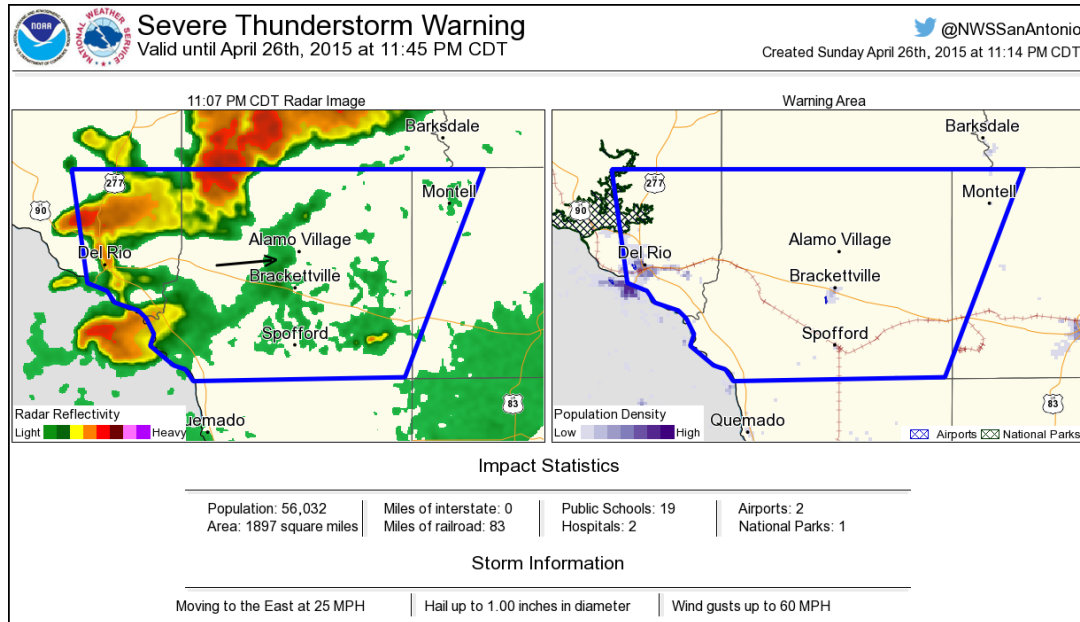
### Impact Statistics

Population: 23,715	Miles of interstate: 21	Public Schools: 10	Airports: 0
Area: 1325 square miles	Miles of railroad: 0	Hospitals: 1	National Parks: 0

### Storm Information

Moving to the East at 35 MPH	Hail up to 1.00 inches in diameter	Wind gusts up to 60 MPH
------------------------------	------------------------------------	-------------------------

# Severe Thunderstorm Warning #70

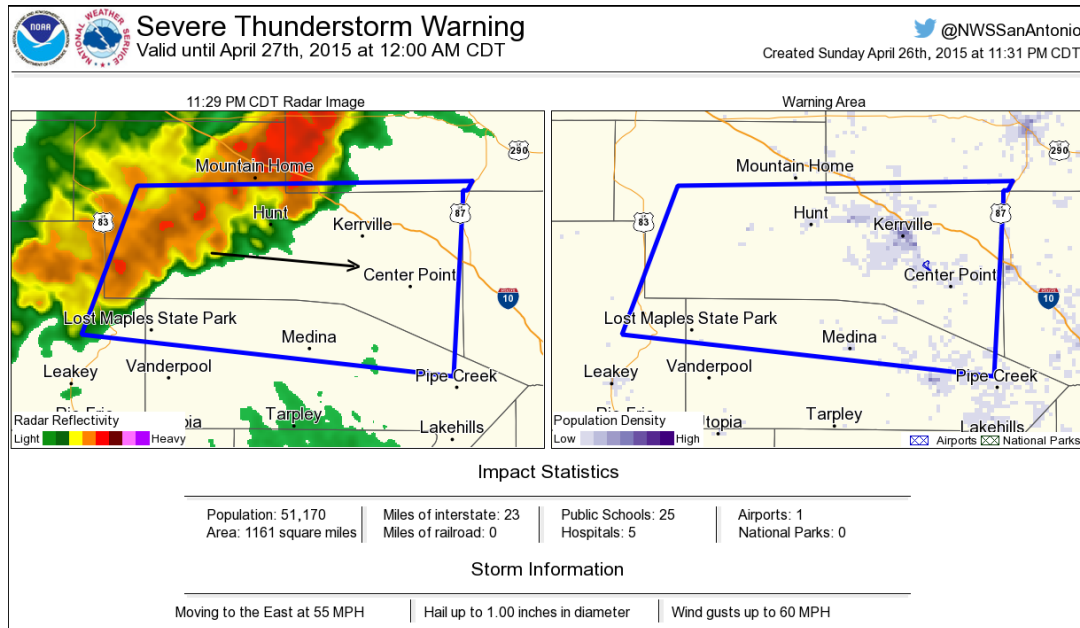


Kinney, Northwestern Uvalde,  
Southeastern Val Verde  
Counties

11:14 pm – 11:45 am 4/26/15

Reports:  
11:15 pm...TSTM wind  
damage...Laughlin AFB

# Severe Thunderstorm Warning #71



East Central Real, Northern Bandera, Southwestern Gillespie and Kerr Counties

11:21 pm – 12:00 am 4/26/15

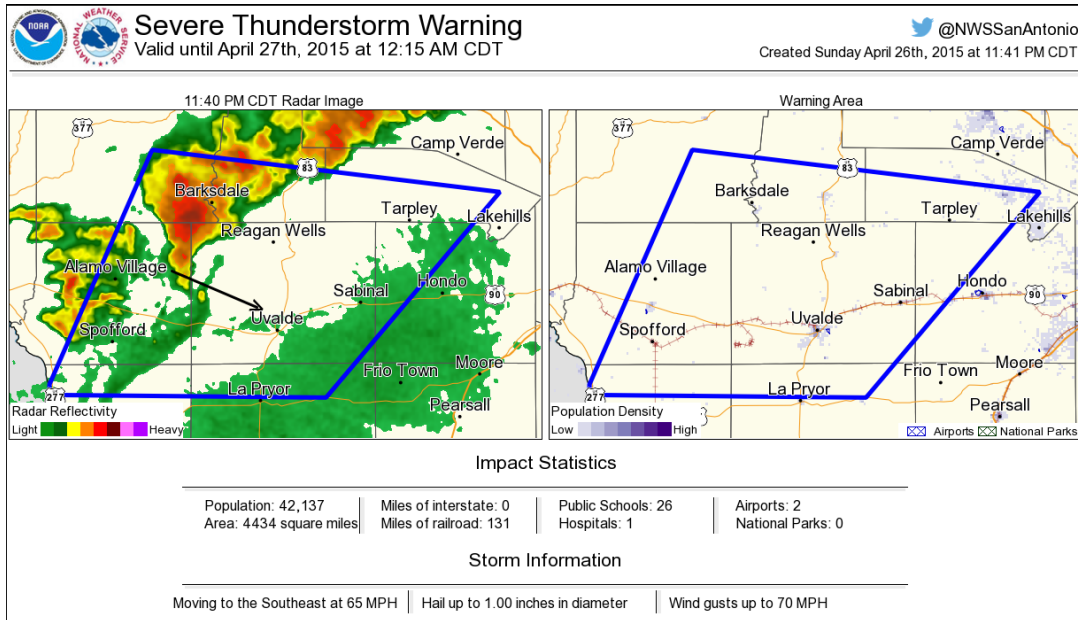
Reports:

11:50 am TSTM wind damage...Kerrville

11:55 pm...TSTM wind damage...Kerrville



# Severe Thunderstorm Warning #72



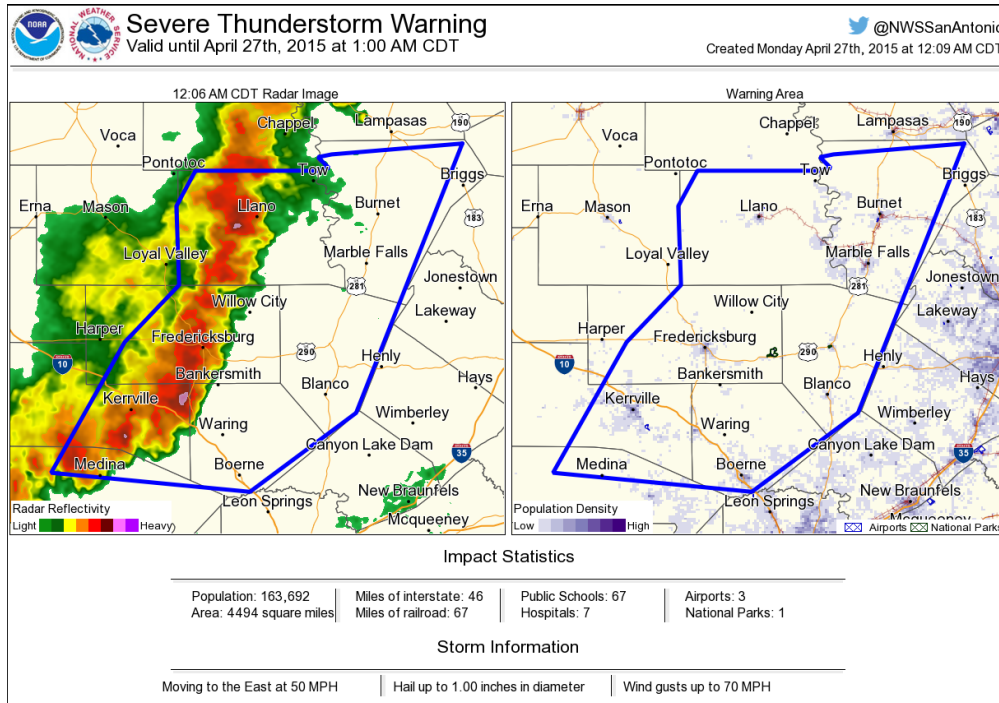
Southern Real, Northern Maverick, South Central Edwards, Northwestern Medina, Northwestern Zavala, Kinney, Southern Bandera and Uvalde Counties

11:40 pm – 12:15 am 4/26/15

Reports:  
12:00 am...0.88 in.  
hail...Leakey

This was our office's 8<sup>th</sup> largest warning ever issued (more on the last slide of the write-up)

# Severe Thunderstorm Warning #73



Llano, Burnet, Kendall,  
Blanco, Northern Bandera,  
Gillespie and Southeastern  
Kerr Counties

11:49 pm – 1:00 am 4/26/15

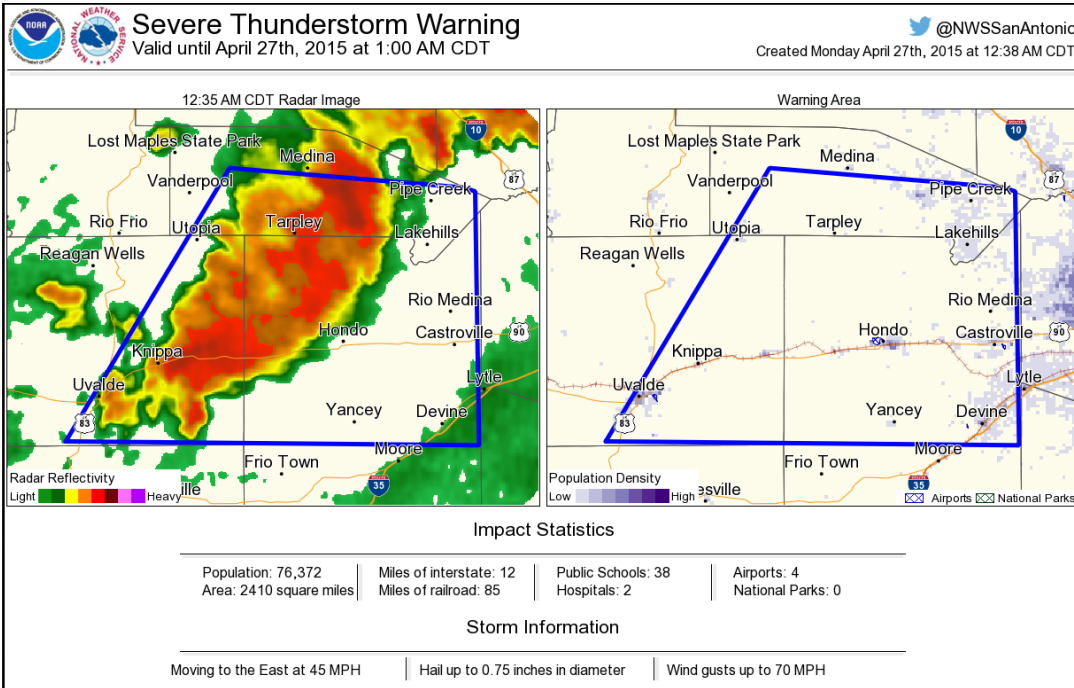
Reports:

11:50 am TSTM wind  
damage...Kerrville

11:55 pm...TSTM wind  
damage...Kerrville

This was our office's 7<sup>th</sup>  
largest warning ever issued  
(more on the last slide of the  
write-up)

# Severe Thunderstorm Warning #74

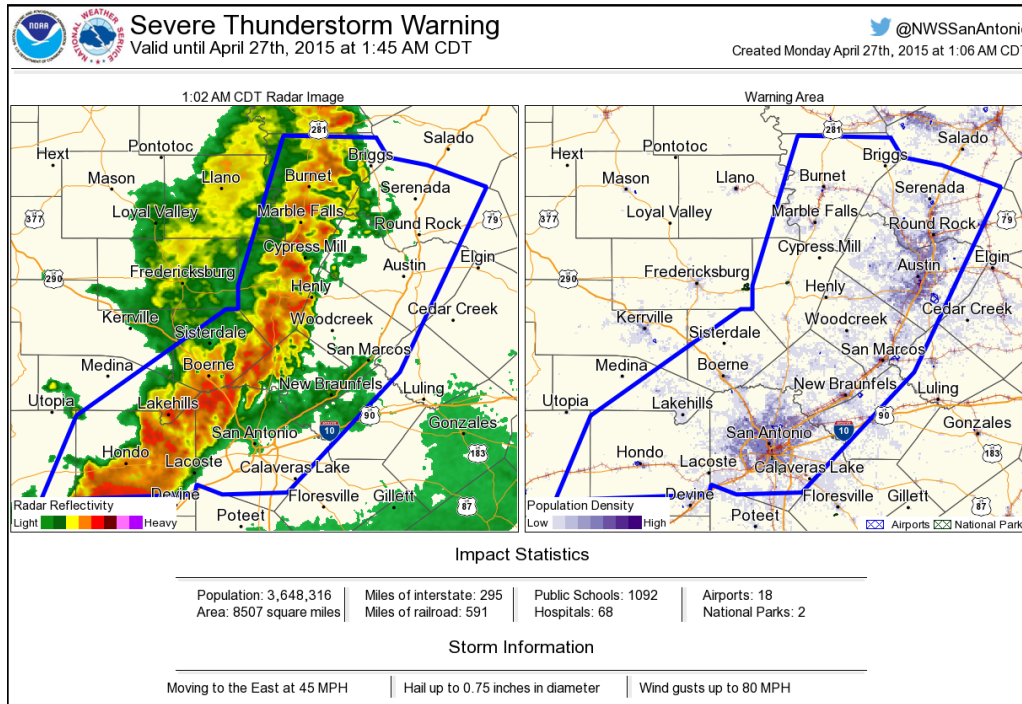


Southeastern Real, Medina,  
Bandera and Uvalde  
Counties

12:14 pm – 1:00 am 4/27/15

Reports:  
1:44 am...TSTM wind  
damage...Hondo

# Severe Thunderstorm Warning #75



Southeastern Llano, Central Guadalupe, Burnet, Hays, Northwestern Caldwell, Travis, Medina, Comal, Kendall, Blanco, Southeastern Uvalde, Eastern Bandera, Bexar, Williamson and Southeastern Kerr Counties

12:44 am – 1:45 am 4/26/15

Reports:

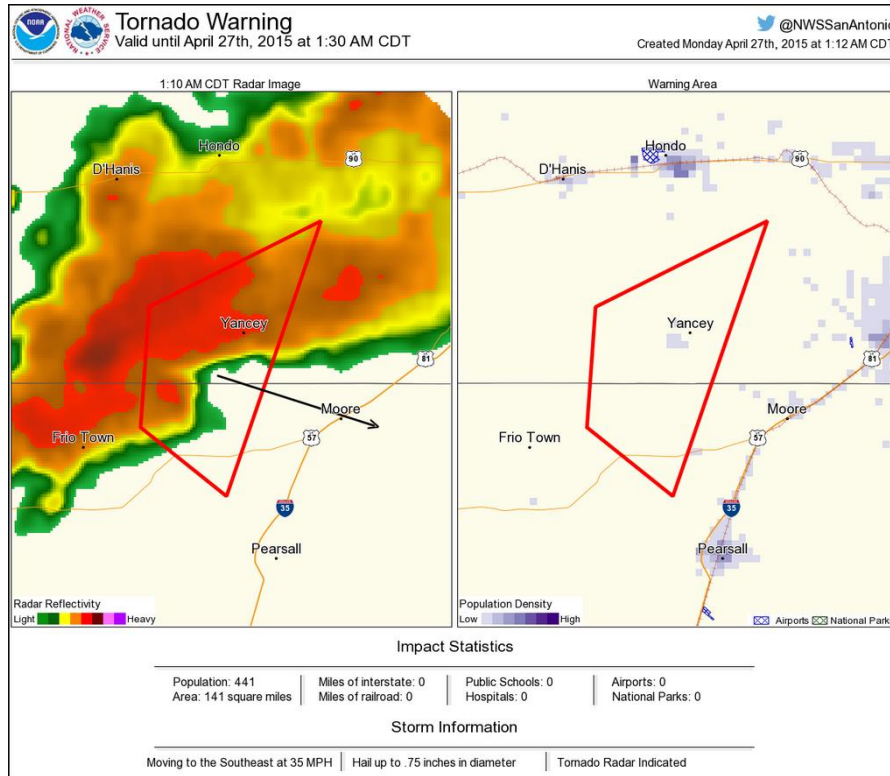
12:44 am...TSTM wind damage...Hondo

1:11 am...TSTM wind damage...San Antonio Int. Airport

\*Most significant reports included

This was our office's 2<sup>nd</sup> largest warning ever issued (more on the last slide of the write-up)

# Tornado Warning #3

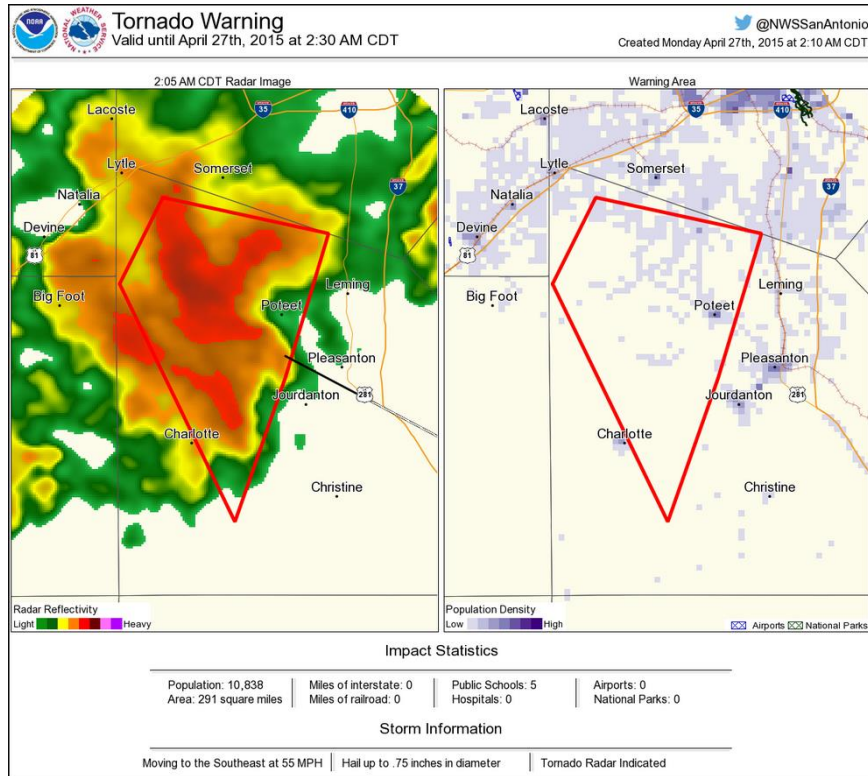


Southwestern Medina,  
Northwestern Frio and  
Southeastern Uvalde  
Counties

12:38 am – 1:30 am 4/27/15

Reports:

# Tornado Warning #4



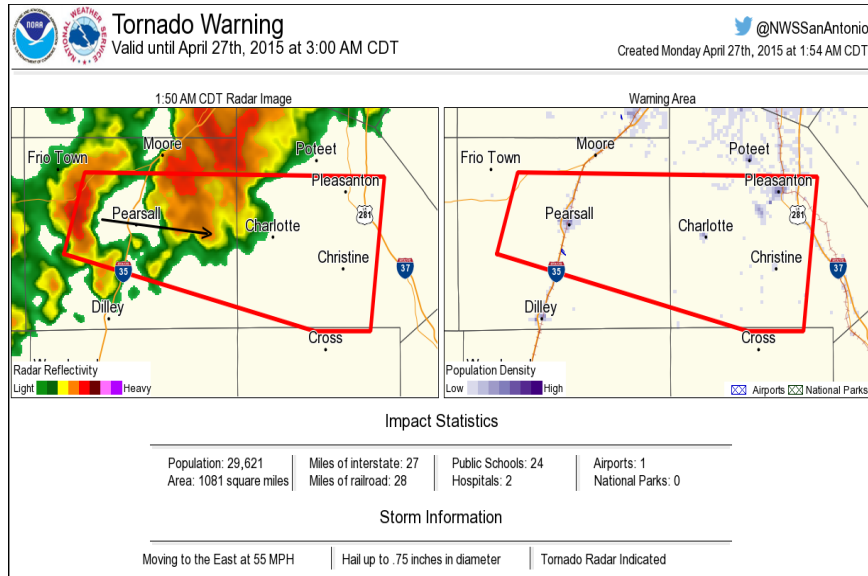
Southeastern Medina,  
Western Atascosa and  
Northeastern Frio Counties

1:24 am – 2:30 am 4/27/15

Reports:



# Tornado Warning #5



Southwestern Atascosa and  
Central Frio Counties

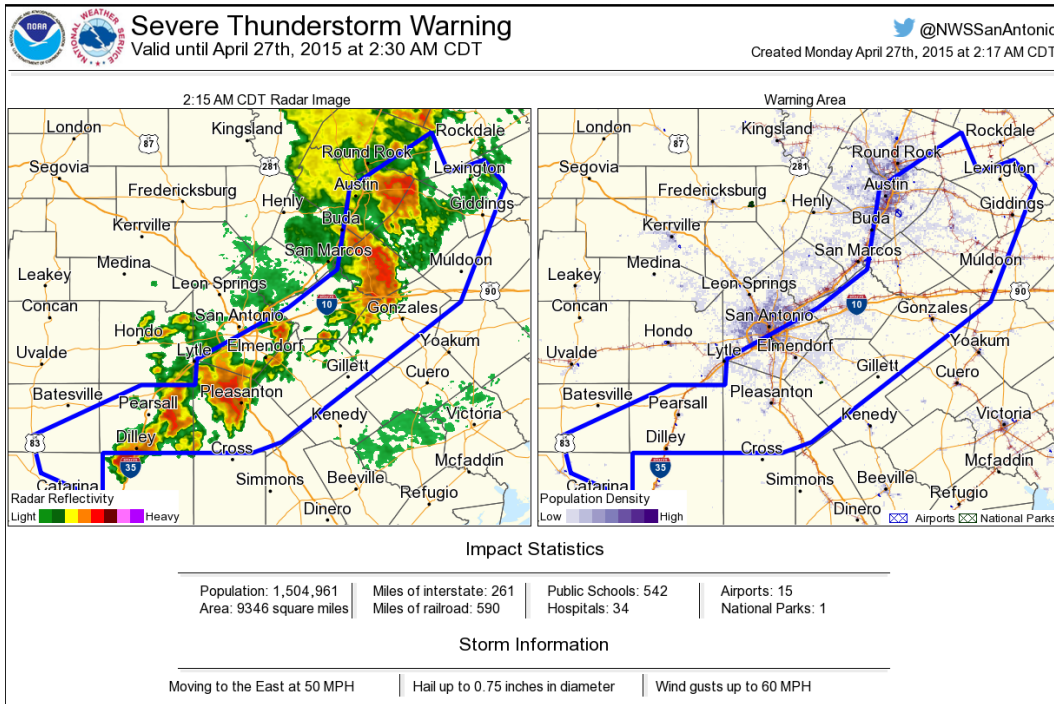
1:54 am – 3:00 am 4/27/15

Reports:

2:12 am...TSTM wind  
damage...Jourdanton



# Severe Thunderstorm Warning #76



Guadalupe, Hays, Caldwell, Travis, Southern Medina... Eastern Zavala, Atascosa, Bastrop, Gonzales, Comal, Western Fayette, Frio, Northeastern Dimmit, Northwestern Lavaca, Bexar, Williamson, Central Karnes, Lee and Wilson Counties

1:38 am - 2:30 am 4/27/15

Reports:

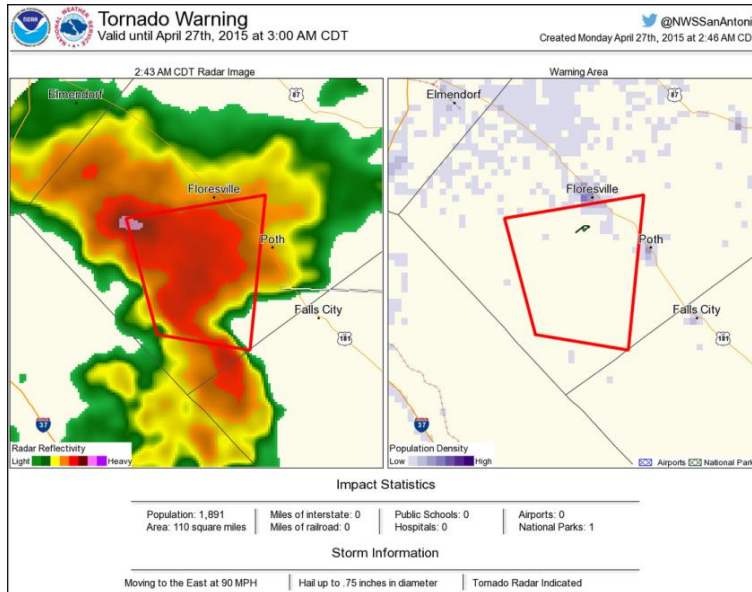
1:40 am...TSTM wind damage...Austin

1:55 am...TSTM wind damage...Martindale

\*Most significant reports included

This was our office's largest warning ever issued (more on the last slide of the write-up)

# Tornado Warning #6

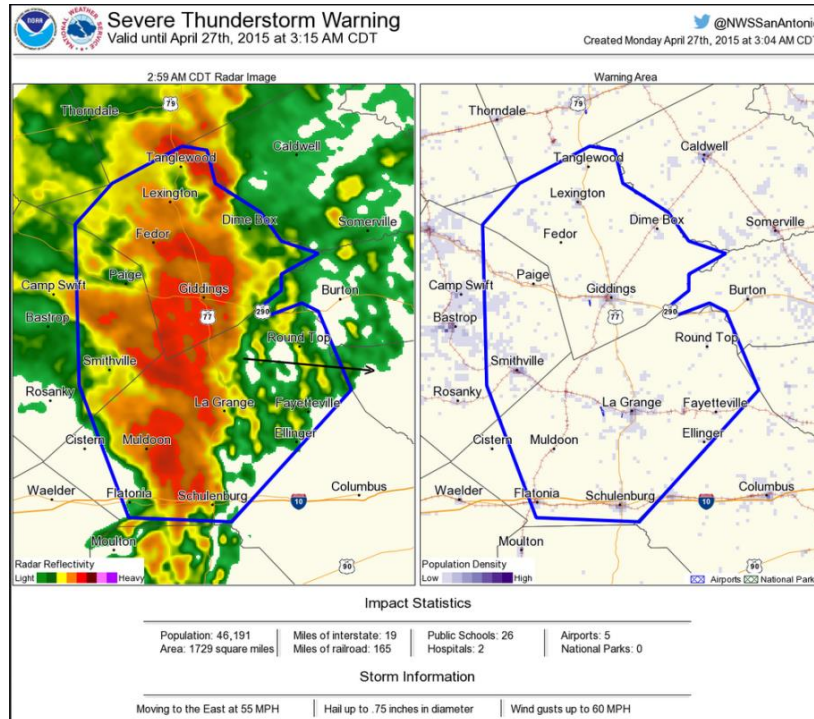


Northeastern Atascosa and  
Southwestern Wilson  
Counties

2:24 am – 3:00 am 4/27/15

Reports:

# Severe Thunderstorm Warning #77

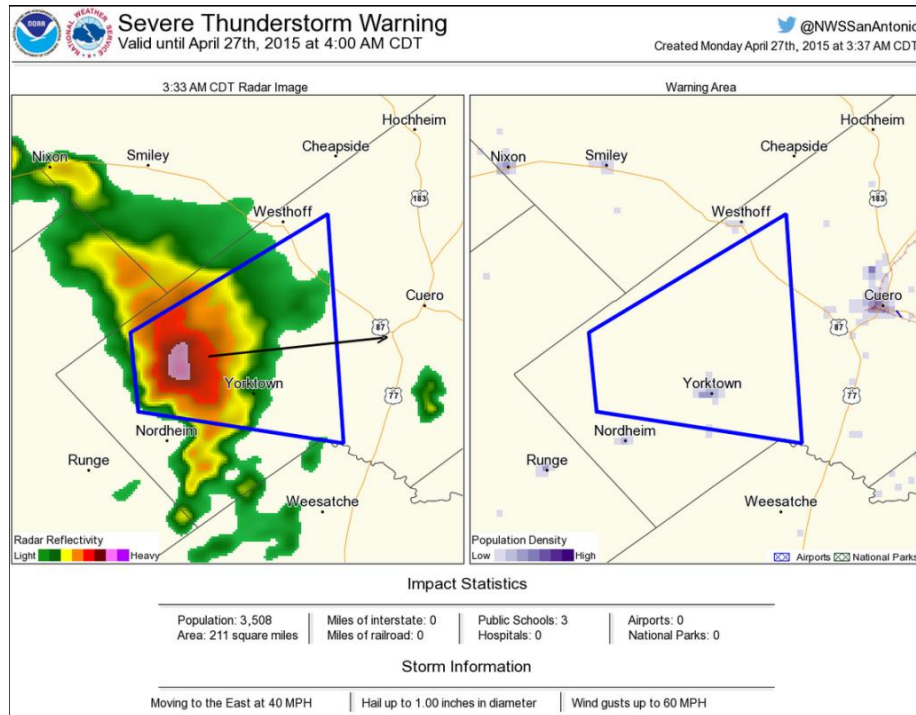


Caldwell, Southeastern Travis, Fayette, Bastrop, Northeastern Gonzales, Northern Lavaca, Southeastern Williamson and Lee Counties

2:30 am – 3:15 am 4/27/15

Reports:  
2:43 am...TSTM wind damage...Smithville

# Severe Thunderstorm Warning #78



Southwestern Dewitt, South  
Central Gonzales, Central  
Karnes and Southeastern  
Wilson Counties

3:00 am - 4:00 am 4/27/15

Reports:

3:00 am...1 in. hail...Falls City



# April 22<sup>nd</sup> – 24<sup>th</sup> Reports

Office	Report Time	County	Location	ST	Event Type	Mag.	Source	Lat	Lon
EWX	4/22/15 14:45	BEXAR	2 N HOLLYWOOD PARK	TX	HEAVY RAIN	2.15	COCORAHS	29.63	-98.48
EWX	4/22/15 14:55	ATASCOSA	2 N PLEASANTON	TX	HAIL	0.70	PUBLIC	28.99	-98.49
EWX	4/22/15 14:57	ATASCOSA	3 W LEMING	TX	HAIL	0.70	AMATEUR RADIO	29.07	-98.53
EWX	4/22/15 15:15	ATASCOSA	5 N PLEASANTON	TX	HEAVY RAIN	2.36	COCORAHS	29.04	-98.49
EWX	4/24/15 6:30	CALDWELL	5 NNW LULING	TX	HEAVY RAIN	4.08	NWS EMPLOYEE	29.75	-97.68
EWX	4/24/15 7:15	BASTROP	2 NE TOGO	TX	FLASH FLOOD	0.00	CITY OFFICIAL	29.97	-97.20
EWX	4/24/15 7:18	ATASCOSA	1 S LYTLE	TX	FLASH FLOOD	0.00	FIRE DEPT/RESCUE	29.22	-98.79
EWX	4/24/15 7:30	BEXAR	2 NE LACKLAND AFB	TX	FLASH FLOOD	0.00	BROADCAST MEDIA	29.41	-98.60
EWX	4/24/15 7:36	CALDWELL	2 NNE FENTRESS	TX	FLASH FLOOD	0.00	DEPT OF HIGHWAYS	29.78	-97.75
EWX	4/24/15 9:00	LEE	1 NNW LOEBAU	TX	FLASH FLOOD	0.00	COUNTY OFFICIAL	30.28	-96.90
EWX	4/24/15 18:50	MAVERICK	1 W LAUGHLIN AFB AUX FI	TX	HAIL	1.00	LAW ENFORCEMENT	28.86	-100.54
EWX	4/24/15 19:48	DIMMIT	2 NW WINTER HAVEN	TX	TORNADO	0.00	LAW ENFORCEMENT	28.64	-99.88
EWX	4/24/15 19:58	DIMMIT	8 N CARRIZO SPRINGS	TX	FUNNEL CLOUD	0.00	LAW ENFORCEMENT	28.64	-99.86
EWX	4/24/15 21:10	FRIO	PEARSALL	TX	HAIL	1.00	LAW ENFORCEMENT	28.89	-99.09

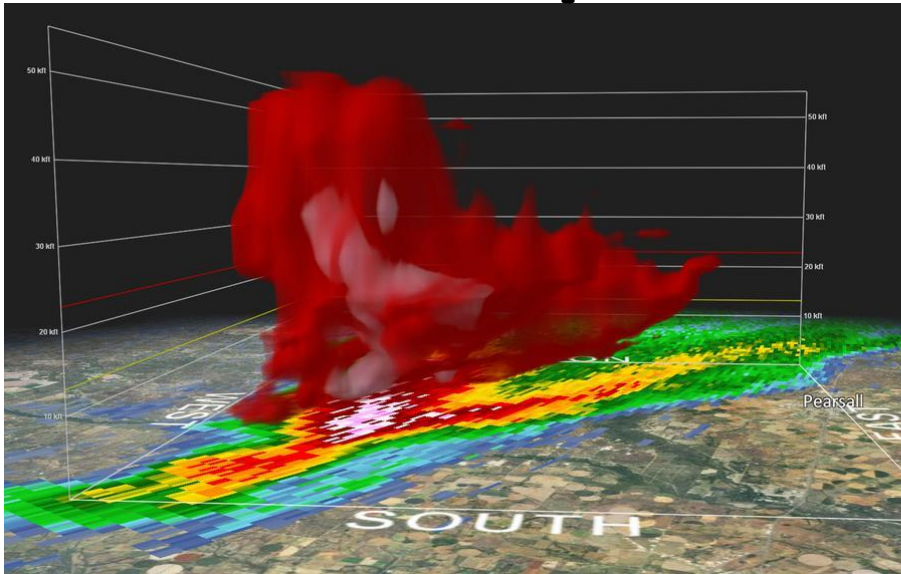


LEFT: Flooding in Smithville, TX on the 24<sup>th</sup> (Photo Credit: @JaredP\_KVUE)



RIGHT: 2 hours worth of rainfall in Lytle, TX on the 24<sup>th</sup> (Photo Credit: @rubengwx)

# April 24<sup>th</sup> Pictures



Radar Image showing Hail Core in the storm near Pearsall on the 24th reaching 40 to 50 thousand feet into the air.  
(Photo Credit: GR2 Analyst)



Small Hail from the 25<sup>th</sup> in San Antonio  
(Photo Credit: @DispatchDemon and @Valerie\_Romo)



Tornado Reported between Carrizo Springs and Crystal City on the evening of the 24<sup>th</sup> (Photo forwarded to us from Zavala County Sheriff's Office)



# April 25<sup>th</sup> Reports

Office	Report Time	County	Location	ST	Event Type	Mag.	Source	Lat	Lon
EWX	4/25/15 2:45	MEDINA	2 SE HONDO	TX	HAIL	0.50	LAW ENFORCEMENT	29.34	-99.14
EWX	4/25/15 3:15	BEXAR	5 E RIO MEDINA	TX	TSTM WND DMG	0.00	PUBLIC	29.42	-98.80
EWX	4/25/15 3:20	UVALDE	1 NE UVALDE	TX	HAIL	0.62	PUBLIC	29.23	-99.77
EWX	4/25/15 3:30	BEXAR	1 SSE SEA WORLD	TX	HAIL	2.00	TRAINED SPOTTER	29.44	-98.69
EWX	4/25/15 3:43	BEXAR	3 SSW LEON VALLEY	TX	HAIL	0.50	PUBLIC	29.45	-98.63
EWX	4/25/15 3:50	UVALDE	1 E SABINAL	TX	TSTM WND DMG	0.00	NWS EMPLOYEE	29.32	-99.46
EWX	4/25/15 3:50	UVALDE	6 S SABINAL	TX	TSTM WND DMG	0.00	NWS EMPLOYEE	29.23	-99.46
EWX	4/25/15 3:50	UVALDE	10 S SABINAL	TX	TSTM WND DMG	0.00	NWS EMPLOYEE	29.18	-99.47
EWX	4/25/15 3:51	BEXAR	SEA WORLD	TX	HAIL	0.88	PUBLIC	29.46	-98.70
EWX	4/25/15 3:54	MEDINA	HONDO	TX	TSTM WND DMG	0.00	LAW ENFORCEMENT	29.36	-99.16
EWX	4/25/15 3:55	BEXAR	3 WSW LEON VALLEY	TX	HAIL	1.25	COCORAHS	29.48	-98.65
EWX	4/25/15 4:15	BEXAR	1 SE LEON VALLEY	TX	HAIL	1.00	PUBLIC	29.48	-98.60
EWX	4/25/15 4:20	BEXAR	3 WNW CASTLE HILLS	TX	HAIL	1.00	EMERGENCY MNGR	29.54	-98.57
EWX	4/25/15 4:26	GUADALUPE	KINGSBURY	TX	TSTM WND DMG	0.00	CO-OP OBSERVER	29.65	-97.82
EWX	4/25/15 4:45	MEDINA	4 E RIO MEDINA	TX	TSTM WND DMG	0.00	BROADCAST MEDIA	29.44	-98.81
EWX	4/25/15 4:45	BEXAR	2 SW LEON VALLEY	TX	HAIL	1.00	PUBLIC	29.48	-98.63
EWX	4/25/15 4:47	ATASCOSA	2 ESE ROSSVILLE	TX	HAIL	1.50	PUBLIC	29.08	-98.65
EWX	4/25/15 4:49	BEXAR	2 SW SEA WORLD	TX	HAIL	1.00	PUBLIC	29.44	-98.72
EWX	4/25/15 4:50	ATASCOSA	LYTLE	TX	TSTM WND DMG	0.00	FIRE DEPT/RESCUE	29.23	-98.80
EWX	4/25/15 4:55	MEDINA	DEVINE	TX	HAIL	1.25	TRAINED SPOTTER	29.15	-98.90
EWX	4/25/15 5:00	GUADALUPE	3 SSE GERONIMO	TX	FLASH FLOOD	0.00	AMATEUR RADIO	29.63	-97.94
EWX	4/25/15 5:00	GUADALUPE	5 N SEGUIN	TX	TSTM WND DMG	0.00	AMATEUR RADIO	29.65	-97.97
EWX	4/25/15 5:10	CALDWELL	5 NNW LULING	TX	HEAVY RAIN	1.12	NWS EMPLOYEE	29.75	-97.68
EWX	4/25/15 5:11	GUADALUPE	5 N SEGUIN	TX	TSTM WND DMG	0.00	AMATEUR RADIO	29.65	-97.97
EWX	4/25/15 5:15	WILSON	9 WNW FLORESVILLE	TX	HAIL	0.75	COCORAHS	29.19	-98.29
EWX	4/25/15 5:20	WILSON	4 WNW FLORESVILLE	TX	HAIL	1.75	PUBLIC	29.16	-98.22
EWX	4/25/15 5:23	BEXAR	SAN ANTONIO	TX	FLASH FLOOD	0.00	FIRE DEPT/RESCUE	29.46	-98.51
EWX	4/25/15 5:25	WILSON	FLORESVILLE	TX	HAIL	1.00	EMERGENCY MNGR	29.14	-98.16
EWX	4/25/15 5:45	BEXAR	1 NNE LIVE OAK	TX	HEAVY RAIN	2.49	EMERGENCY MNGR	29.57	-98.33
EWX	4/25/15 5:48	FAYETTE	SCHULENBURG	TX	TSTM WND DMG	0.00	EMERGENCY MNGR	29.68	-96.91
EWX	4/25/15 5:51	BEXAR	SAN ANTONIO	TX	FLASH FLOOD	0.00	FIRE DEPT/RESCUE	29.46	-98.51
EWX	4/25/15 6:30	GUADALUPE	CIBOLO	TX	FLASH FLOOD	0.00	EMERGENCY MNGR	29.57	-98.23
EWX	4/25/15 6:46	GUADALUPE	4 NE SEGUIN	TX	FLASH FLOOD	0.00	AMATEUR RADIO	29.62	-97.92
EWX	4/25/15 7:06	GUADALUPE	1 NW CIBOLO	TX	HEAVY RAIN	2.20	COCORAHS	29.57	-98.23



# April 25<sup>th</sup> Pictures



Mammatus clouds and the radar...storms to our south, clearing to our north. Picture from 7:20 am out the door of our Office on the 25th.

Large Tree Damage from Seguin, TX (Photo Credit: NWS)



Pieces of at least 2 wooden sheds in Hondo, TX (Photo Credit: NWS)

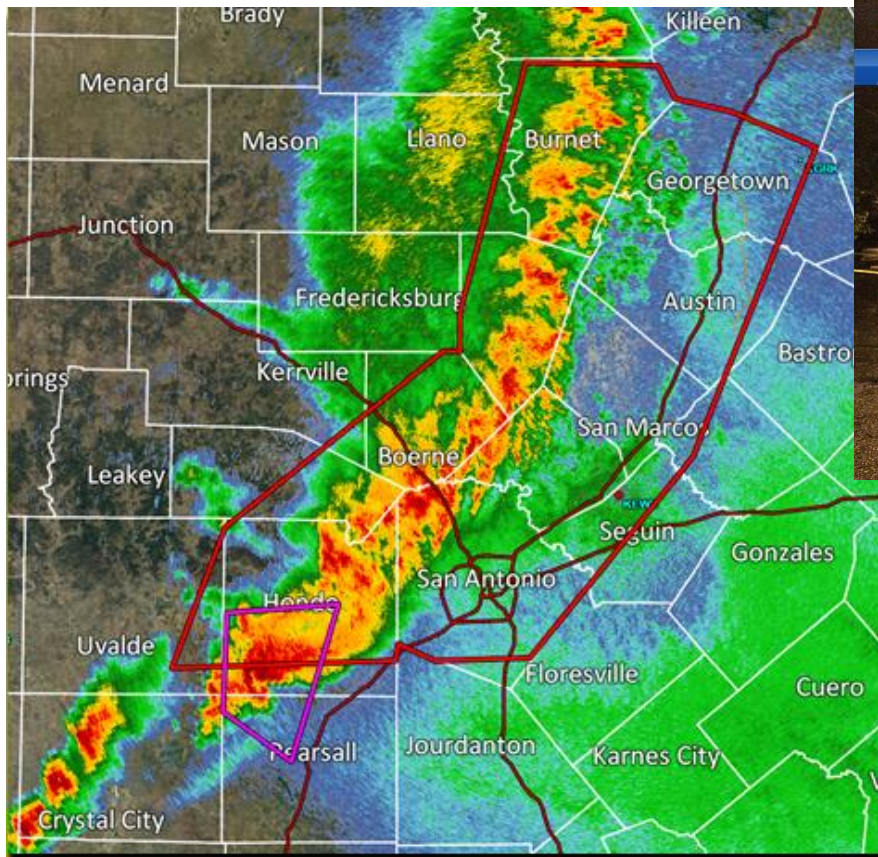


# April 26<sup>th</sup> and 27<sup>th</sup> Reports

Office	Report Time	County	Location	ST	Event Type	Mag.	Source	Lat	Lon
EWX	4/26/15 21:39	VAL VERDE	2 S JUNO	TX	HAIL	1.00	PUBLIC	30.12	-101.12
EWX	4/26/15 22:15	VAL VERDE	5 NNW COMSTOCK	TX	HAIL	0.88	PUBLIC	29.75	-101.20
EWX	4/26/15 22:50	VAL VERDE	DEL RIO	TX	TSTM WND GST	41.00	ASOS	29.38	-100.90
EWX	4/26/15 23:10	VAL VERDE	2 ESE DEL RIO	TX	TSTM WND DMG	0.00	LAW ENFORCEMENT	29.37	-100.87
EWX	4/26/15 23:15	VAL VERDE	LAUGHLIN AFB	TX	TSTM WND GST	49.00	ASOS	29.36	-100.78
EWX	4/26/15 23:50	KERR	KERRVILLE	TX	TSTM WND DMG	0.00	PUBLIC	30.04	-99.14
EWX	4/26/15 23:55	KERR	KERRVILLE	TX	TSTM WND GST	41.00	AWOS	30.04	-99.14
EWX	4/27/15 0:00	REAL	LEAKEY	TX	HAIL	0.88	PUBLIC	29.73	-99.76
EWX	4/27/15 0:44	MEDINA	HONDO	TX	TSTM WND GST	55.00	ASOS	29.36	-99.16
EWX	4/27/15 1:11	BEXAR	SAN ANTONIO INT AP	TX	TSTM WND GST	41.00	ASOS	29.53	-98.47
EWX	4/27/15 1:20	BEXAR	4 ENE LACKLAND AFB	TX	TSTM WND DMG	0.00	FIRE DEPT/RESCUE	29.40	-98.56
EWX	4/27/15 1:32	COMAL	NEW BRAUNFELS	TX	TSTM WND GST	53.00	ASOS	29.70	-98.12
EWX	4/27/15 1:33	TRAVIS	1 N TANGLEWOOD FOREST	TX	TSTM WND DMG	0.00	LAW ENFORCEMENT	30.19	-97.84
EWX	4/27/15 1:40	TRAVIS	AUSTIN	TX	TSTM WND DMG	0.00	TRAINED SPOTTER	30.31	-97.75
EWX	4/27/15 1:45	FRIO	5 SE FRIO TOWN	TX	FUNNEL CLOUD	0.00	LAW ENFORCEMENT	28.97	-99.24
EWX	4/27/15 1:55	CALDWELL	MARTINDALE	TX	TSTM WND GST	59.00	TRAINED SPOTTER	29.84	-97.84
EWX	4/27/15 1:57	TRAVIS	1 SE AUSTIN	TX	TSTM WND DMG	0.00	PUBLIC	30.30	-97.74
EWX	4/27/15 1:58	TRAVIS	1 SSE AUSTIN	TX	TSTM WND DMG	0.00	PUBLIC	30.29	-97.74
EWX	4/27/15 2:02	CALDWELL	1 ENE LOCKHART	TX	TSTM WND DMG	0.00	LAW ENFORCEMENT	29.88	-97.66
EWX	4/27/15 2:12	ATASCOSA	JOURDANTON	TX	TSTM WND GST	50.00	STORM CHASER	28.91	-98.54
EWX	4/27/15 2:43	BASTROP	SMITHVILLE	TX	TSTM WND DMG	0.00	EMERGENCY MNGR	30.01	-97.16
EWX	4/27/15 3:00	KARNES	FALLS CITY	TX	HAIL	1.00	PUBLIC	28.98	-98.02
EWX	4/27/15 3:15	TRAVIS	1 S AUSTIN	TX	TSTM WND DMG	0.00	BROADCAST MEDIA	30.29	-97.75
EWX	4/27/15 21:45	BURNET	8 NNW LAKE VICTOR	TX	HAIL	0.62	TRAINED SPOTTER	31.02	-98.23



# April 26<sup>th</sup>/27<sup>th</sup> Pictures

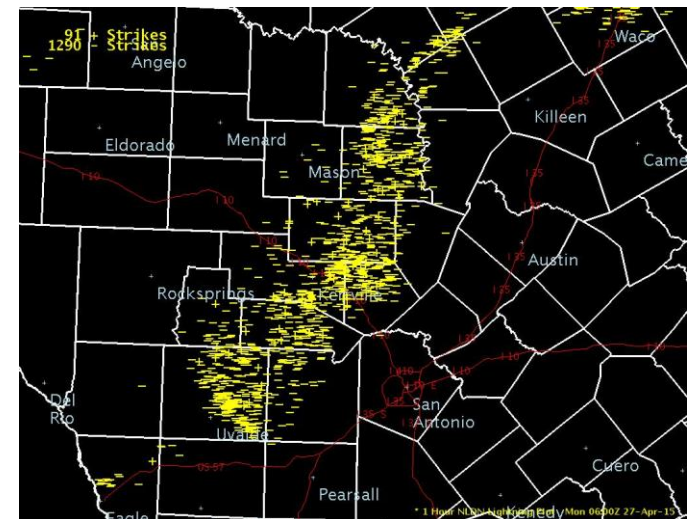


Squall Line approaching the I-35 Corridor around 1 am on the 27th  
(Photo Credit: GR2 Analyst)

Around 1500 cloud to ground lightning strikes the from 12 am to 1 am on the 27th. (data courtesy Earth Networks / Vaisala)



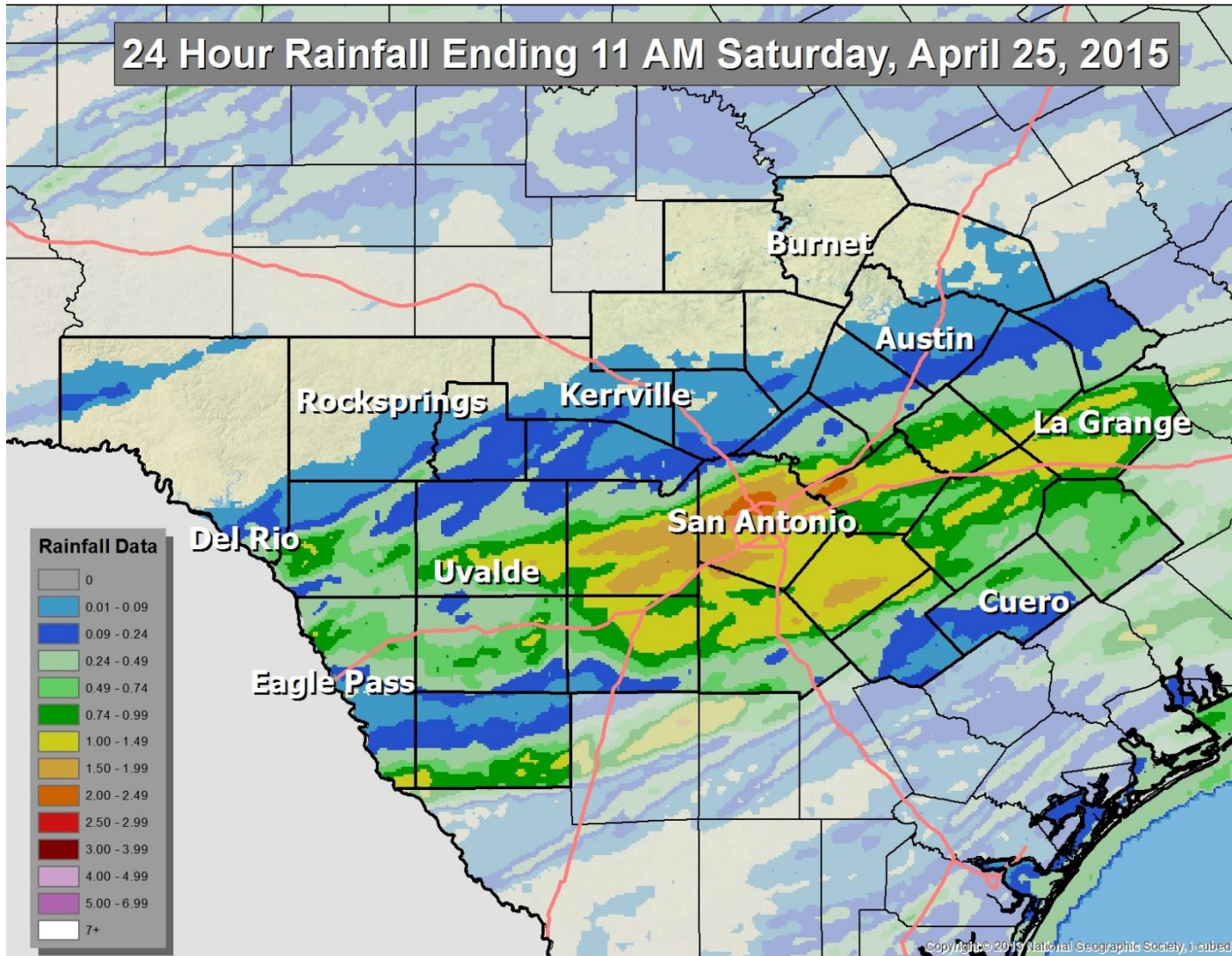
Wind Damage from the Storms near the UT Campus in Austin, TX after the storms moved through. (Photo Credit: @KXAN\_Weather)





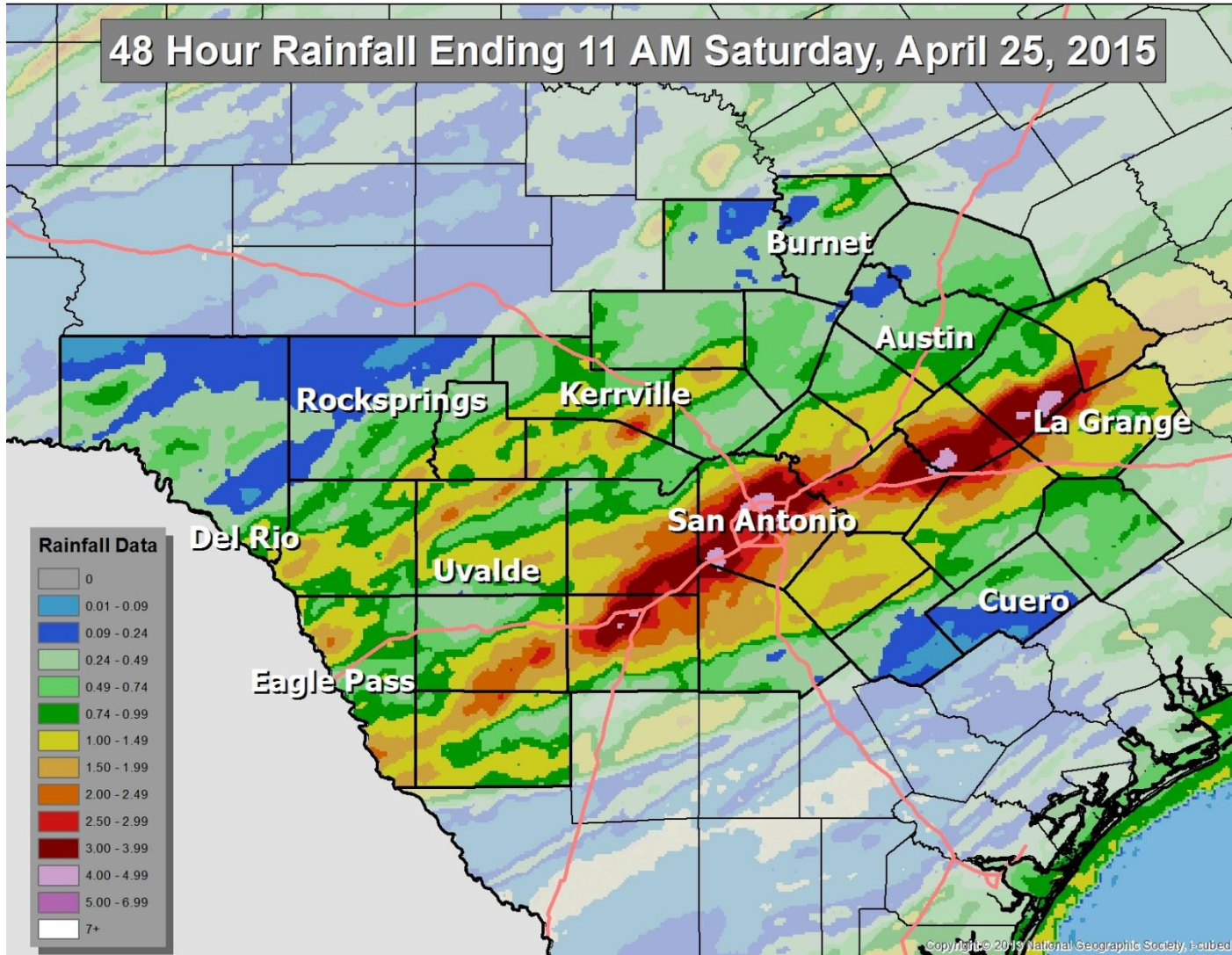
# Rainfall Maps

24 Hour Rainfall Ending 11 AM Saturday, April 25, 2015



# Rainfall Maps

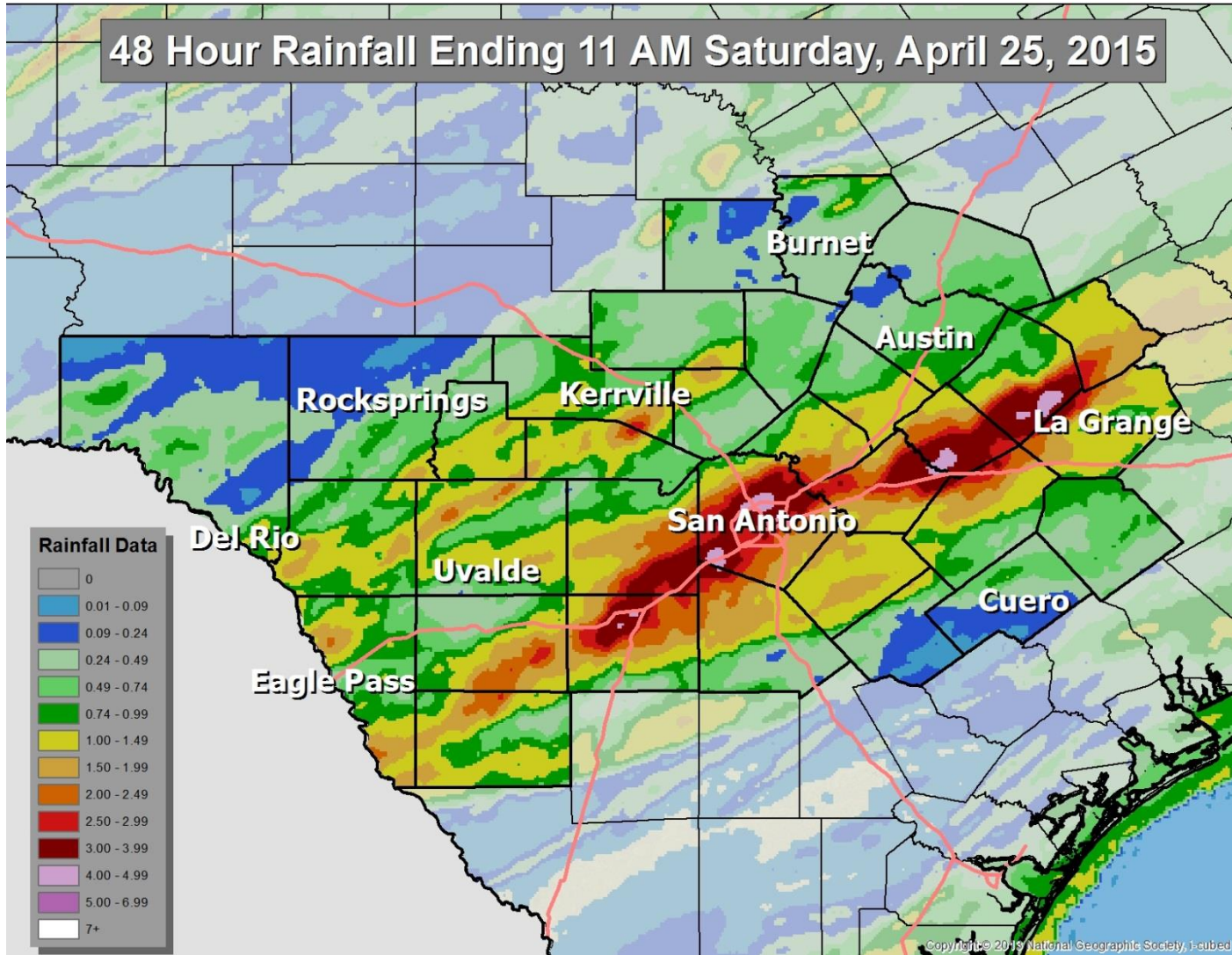
48 Hour Rainfall Ending 11 AM Saturday, April 25, 2015



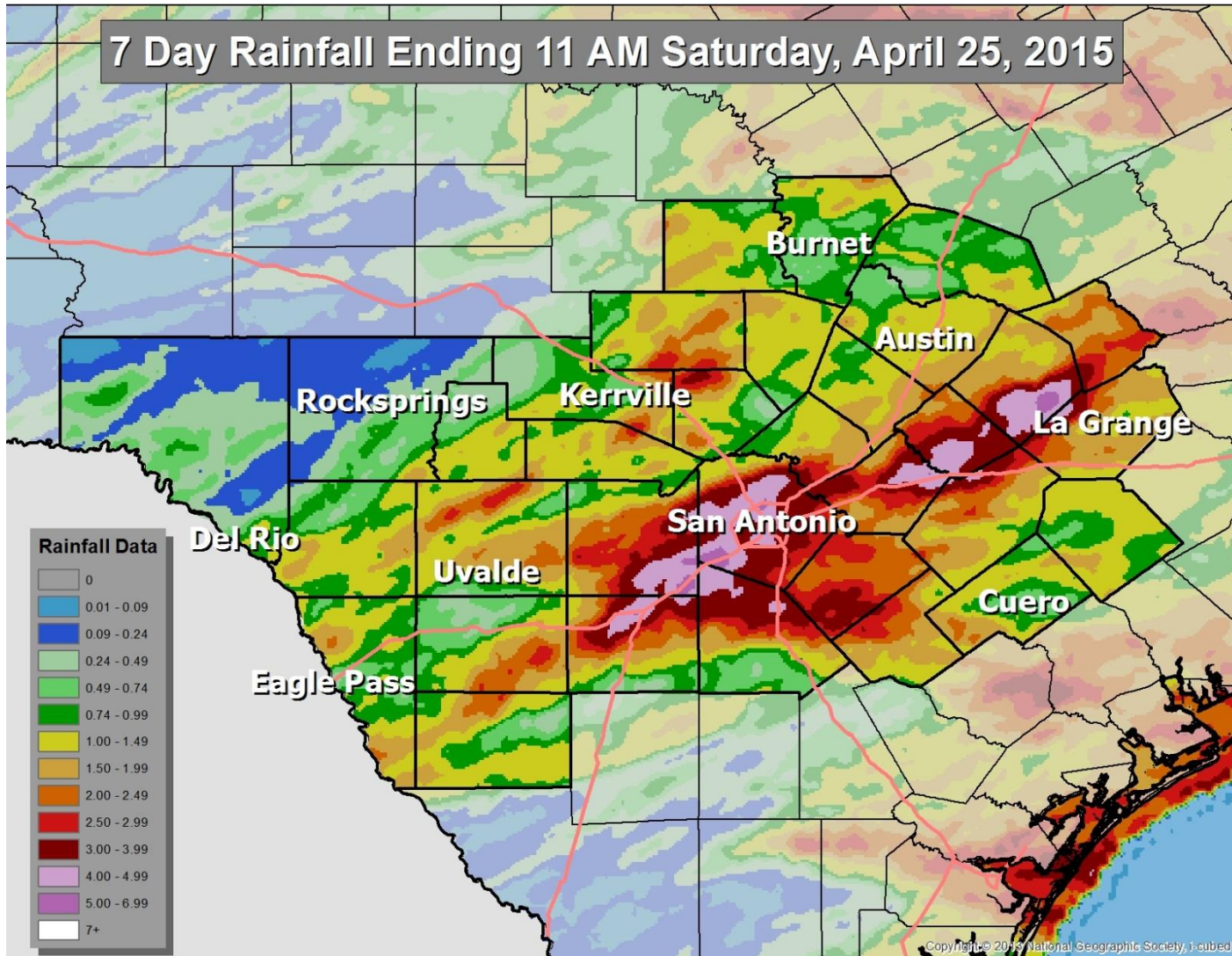


# Rainfall Maps

48 Hour Rainfall Ending 11 AM Saturday, April 25, 2015



# Rainfall Maps

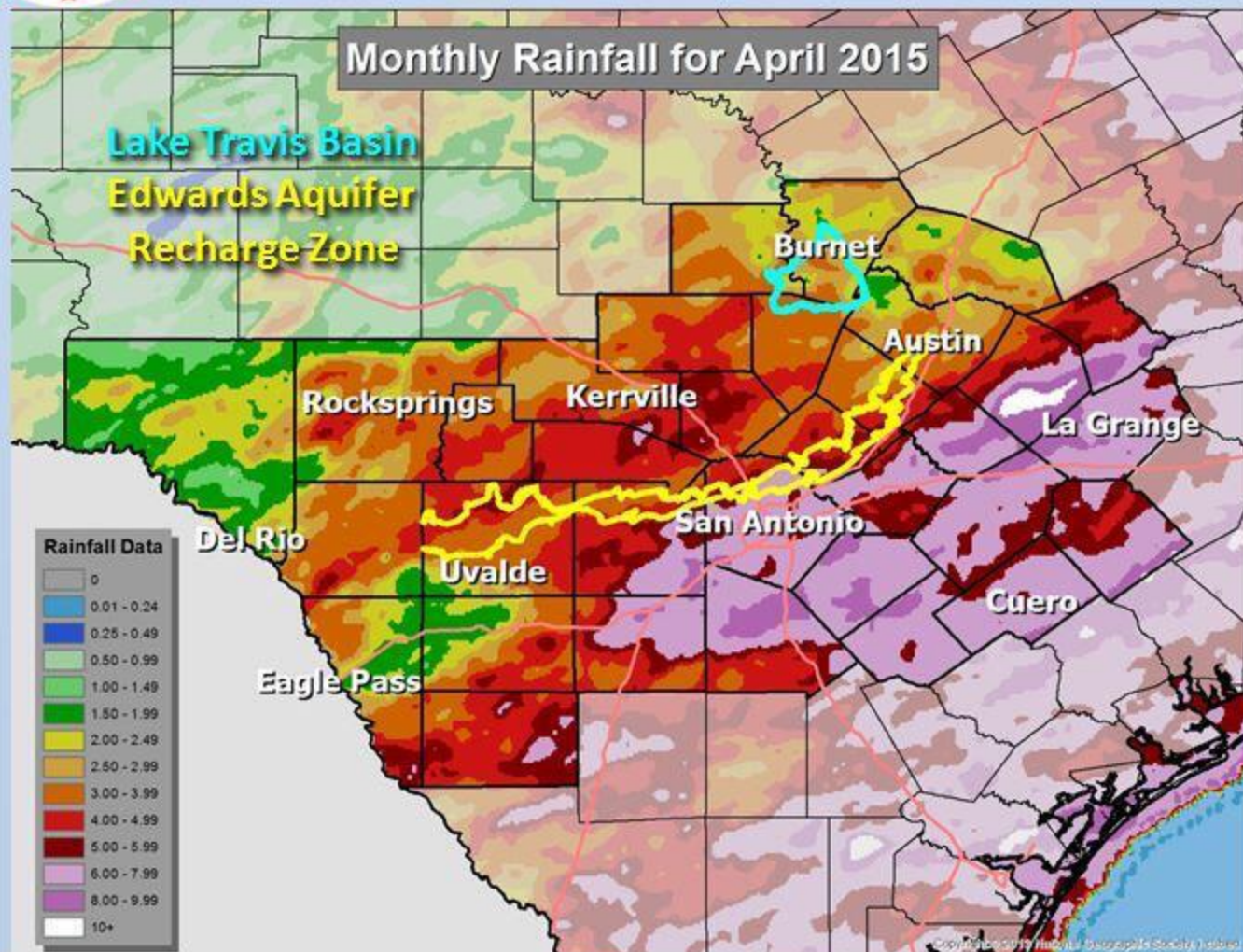






# Beneficial Rainfall in April...

National Weather Service Austin / San Antonio



## Summary

The heaviest rain (6-10 inches) fell east of the I-35 corridor.

The **Edwards Aquifer** is up 7 feet from April 1 to a level of 652 feet. Last time the aquifer was this high was June 2013.

**Lake Travis** is up about 1.5 Feet.



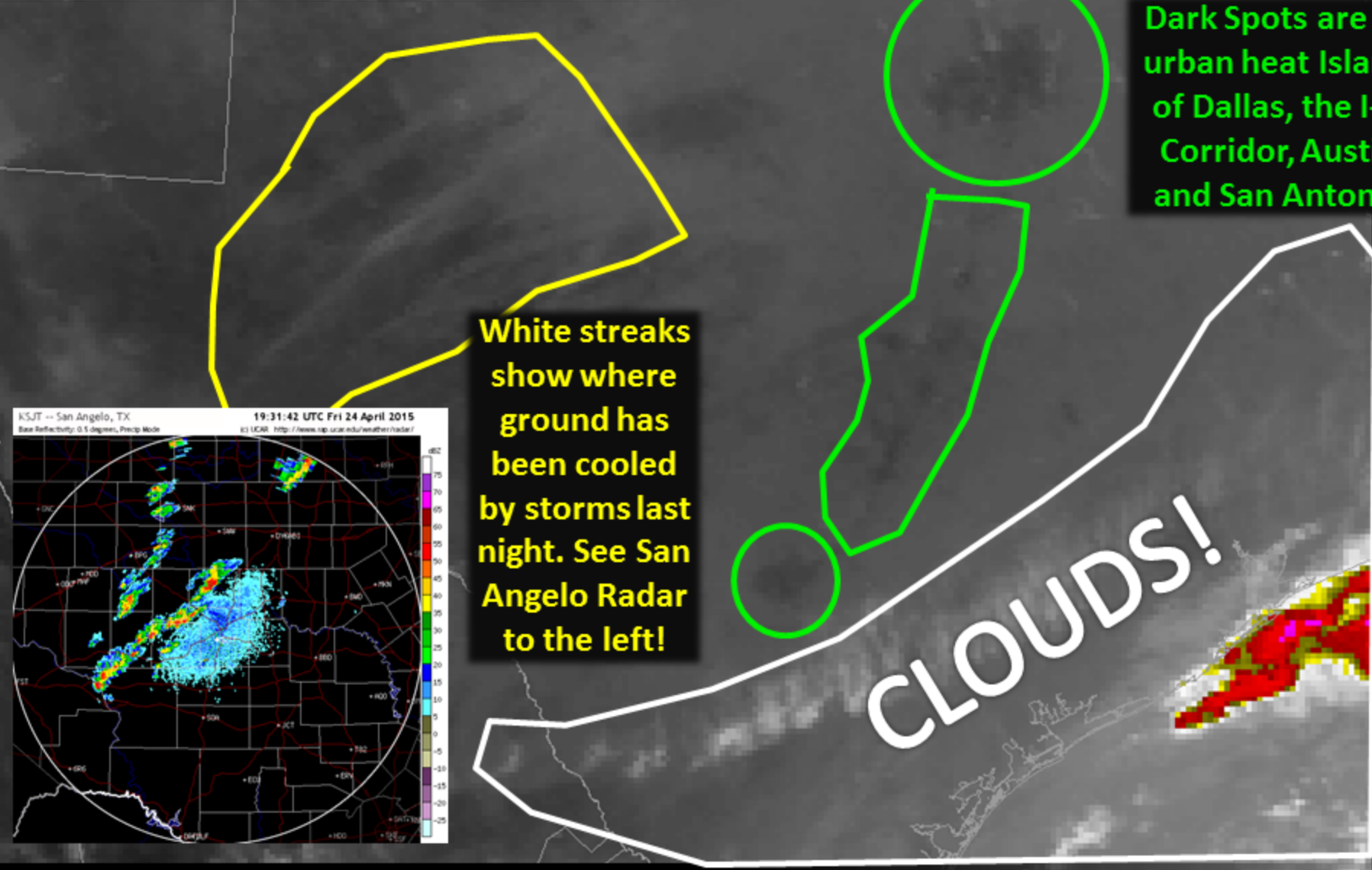
@NWSSanAntonio  
weather.gov/ewx



# IR Satellite Fun!

National Weather Service Austin / San Antonio

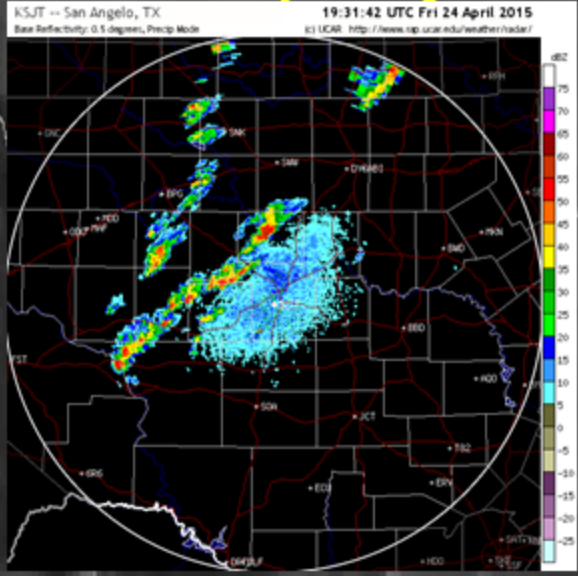
April 25<sup>th</sup>, 2015 – 2:00 pm



Dark Spots are the urban heat Islands of Dallas, the I-35 Corridor, Austin, and San Antonio.

White streaks show where ground has been cooled by storms last night. See San Angelo Radar to the left!

CLOUDS!



@NWSSanAntonio  
weather.gov/ewx



## Top 10 Largest for WFO: EWX

Date Issued	Size (sq km)	WFO	Phenomena
2015-04-27	32444	EWX	Severe Thunderstorm Warning 76
2015-04-27	22032	EWX	Severe Thunderstorm Warning 75
2009-02-11	15255	EWX	Severe Thunderstorm Warning 5
2011-05-12	13061	EWX	Severe Thunderstorm Warning 60
2011-05-12	12304	EWX	Severe Thunderstorm Warning 51
2008-04-26	12044	EWX	Severe Thunderstorm Warning 73
2015-04-27	11983	EWX	Severe Thunderstorm Warning 73
2015-04-27	11484	EWX	Severe Thunderstorm Warning 72
2011-05-12	11329	EWX	Severe Thunderstorm Warning 53
2008-04-26	11151	EWX	Severe Thunderstorm Warning 77

**4 of our office's biggest (based on size) storm based warnings were issued on April 27<sup>th</sup>.**

**Our biggest warning (12,527 mi<sup>2</sup>/32,444 sq. km) is now the 5<sup>th</sup> biggest storm based warning ever issued by any of the 122 National Weather Service Forecast Offices.**

**Storm based warnings date back to October 2007.**

## Top 10 Largest for WFO: ALL

Date Issued	Size (sq km)	WFO	Phenomena
2009-07-09	39717	BIS	Severe Thunderstorm Warning 119
2009-07-09	37902	BIS	Severe Thunderstorm Warning 116
2013-09-06	35499	PDT	Severe Thunderstorm Warning 38
2012-07-03	33312	DLH	Severe Thunderstorm Warning 85
2015-04-27	32444	EWX	Severe Thunderstorm Warning 76
2009-07-09	29896	BIS	Severe Thunderstorm Warning 121
2008-08-19	29684	OTX	Severe Thunderstorm Warning 30
2012-08-15	28179	TFX	Severe Thunderstorm Warning 72
2009-06-27	27923	BIS	Severe Thunderstorm Warning 86
2013-05-29	27516	OUN	Severe Thunderstorm Warning 410



**@NWSSanAntonio**  
[weather.gov/ewx](http://weather.gov/ewx)