

# NWS GRAND JUNCTION COLORADO

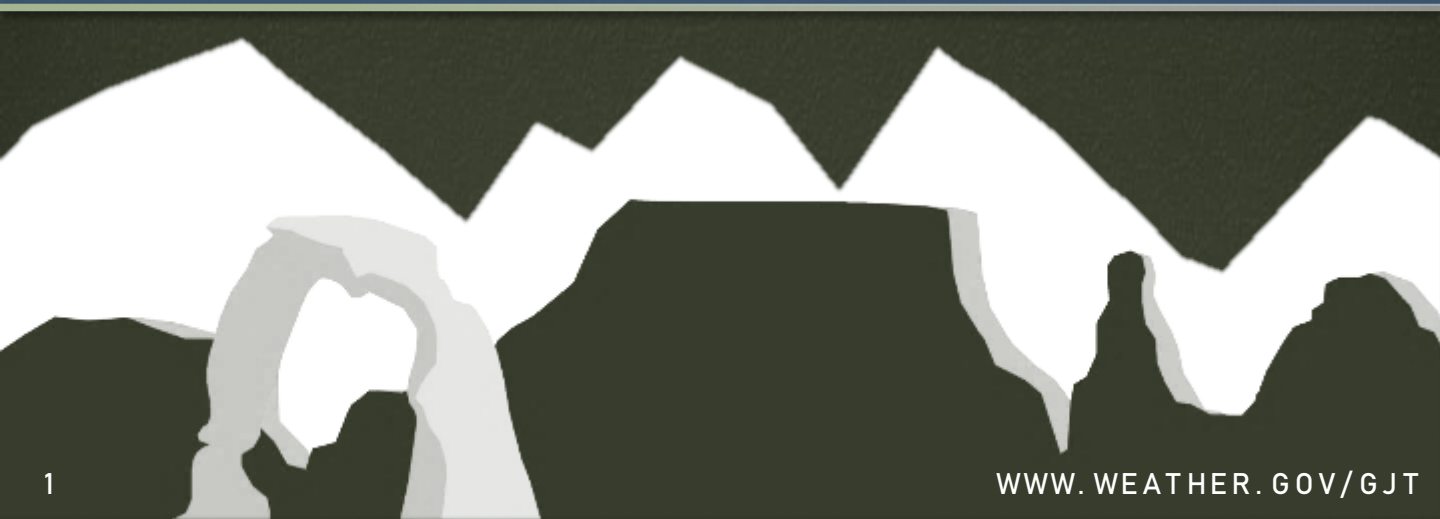


A LOOK  
BACK AT

## FEBRUARY 2023

WEATHER ACROSS E UTAH / W COLORADO

At the risk of sounding like a broken record, the month of February was generally cold and unsettled. The month kicked off with well below normal temperatures, though skies were sunny to start. With high pressure overhead the first few days, temperatures were able to climb to near normal values where there wasn't a deep snowpack. Inevitably though, the next winter storm would arrive and drop temperatures once again. The storms through much of February were drier than had occurred in February, thanks to most of these systems coming under drier, but cold, northwest flow. The potent cold fronts that brought the much below normal temperatures also brought several rounds of snow squall concerns through the month as well. By mid-month, the pattern shifted briefly back to a wetter southwesterly flow, bringing big snows to the southern and central mountains. Then colder, drier northwest flow resumed, favoring the northern mountains for light accumulations. The last week of the month marked a return to stormy southwest flow, able to tap into Pacific moisture and bringing widespread accumulations to all mountain ranges, although the southern mountains were most favored. While not necessarily an Atmospheric River (AR), this pattern shift did set the stage for a return to AR conditions in March. Temperatures remained below to near normal.



# FEBRUARY 2023

## CLIMATE SUMMARY



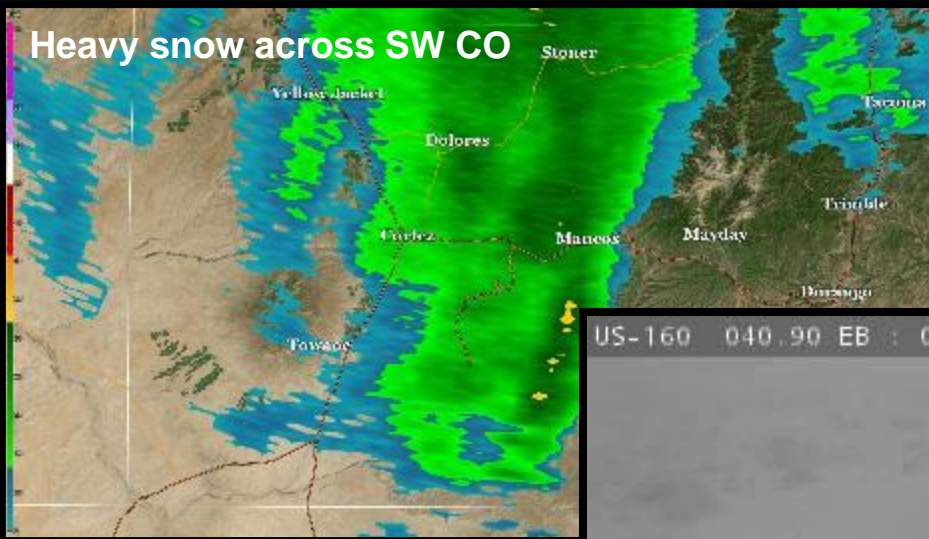
## TABLE OF CONTENTS

*NOTE: all data mentioned is collected from our automated observing stations from 10 airports across the area. Some observers in more remote areas March have measured warmer or colder temperatures, or more or less precipitation than mentioned in this summary.*

PAGE #	PAGE TITLE
1	Cover
2	Table of Contents
3	Story of the Month
4	Temperatures
5	Precipitation
6	Total Monthly Precipitation
7	Monthly Precipitation Departure from Normal
8	Daily Records Report
9	Drought Conditions as of March 4 <sup>TH</sup>
11	March Outlook

# STORY OF THE MONTH **SNOW SQUALLS**

*As part of what felt like a never-ending winter storm cycle through the month of February, there was also several different days with high snow squall potential and with snow squall warnings issued. One such day was February 22<sup>nd</sup>, where impacts were felt all over eastern Utah and western Colorado.*



US-160 040.90 EB : 0.6 mi E of CO-145 (Cortez-MT)

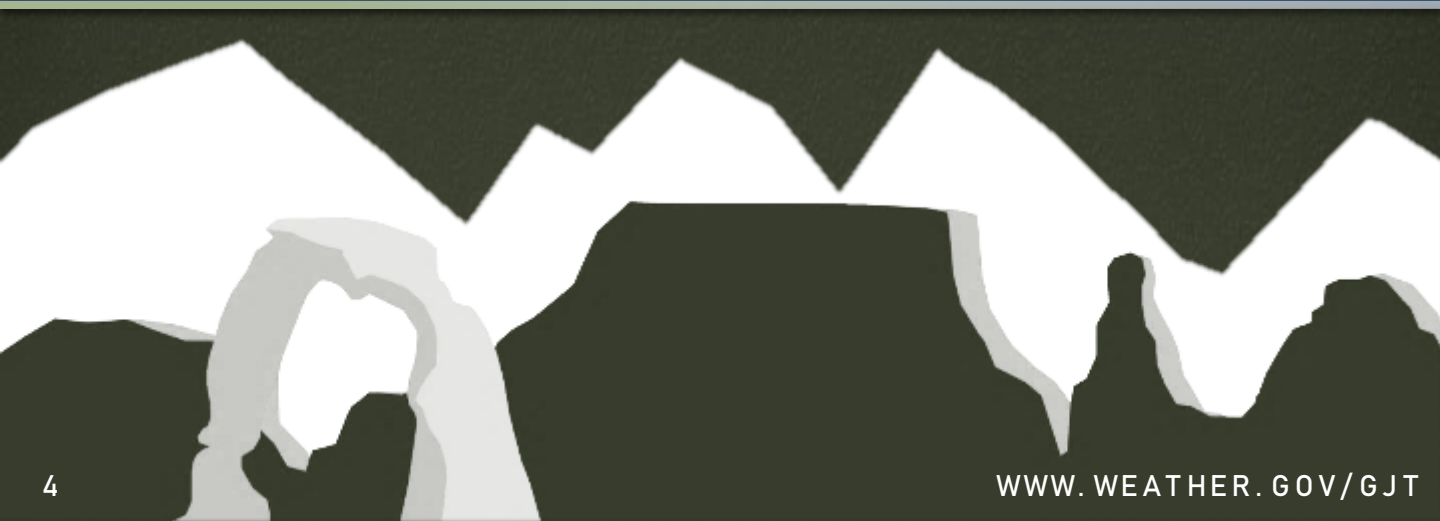
Road conditions on US 160 near Cortez at the time of the radar image above (via CDOT)

FEBRUARY  
2023

# TEMPERATURES



Location	Average Temp (°F) (VS Normal)	Warmest Temp (°F)	Coldest Temp (°F)
Aspen, CO	20.0 <b>(-5.2)</b>	47 on 2/5	-12 on 2/16
Cortez, CO	27.1 <b>(-5.7)</b>	53 on 2/25	-8 on 2/16, 17
Craig, CO	11.6 <b>(-10.6)</b>	42 on 2/21	-22 on 2/1
Durango, CO	22.3 <b>(-7.4)</b>	48 on 2/13	-12 on 2/17
Grand Junction, CO	31.5 <b>(-3.8)</b>	53 on 2/12	1 on 2/16
Meeker, CO	16.2 <b>(-10.2)</b>	46 on 2/5	-21 on 2/16
Montrose, CO	27.5 <b>(-6.2)</b>	57 on 2/5	-6 on 2/16
Rifle, CO	24.8 <b>(-6.8)</b>	49 on 2/21	-6 on 2/16
Canyonlands Airport, UT	30.9 <b>(-4.9)</b>	56 on 2/21	2 on 2/16
Vernal, UT	7.9 <b>(-19.7)</b>	38 on 2/20	-20 on 2/1



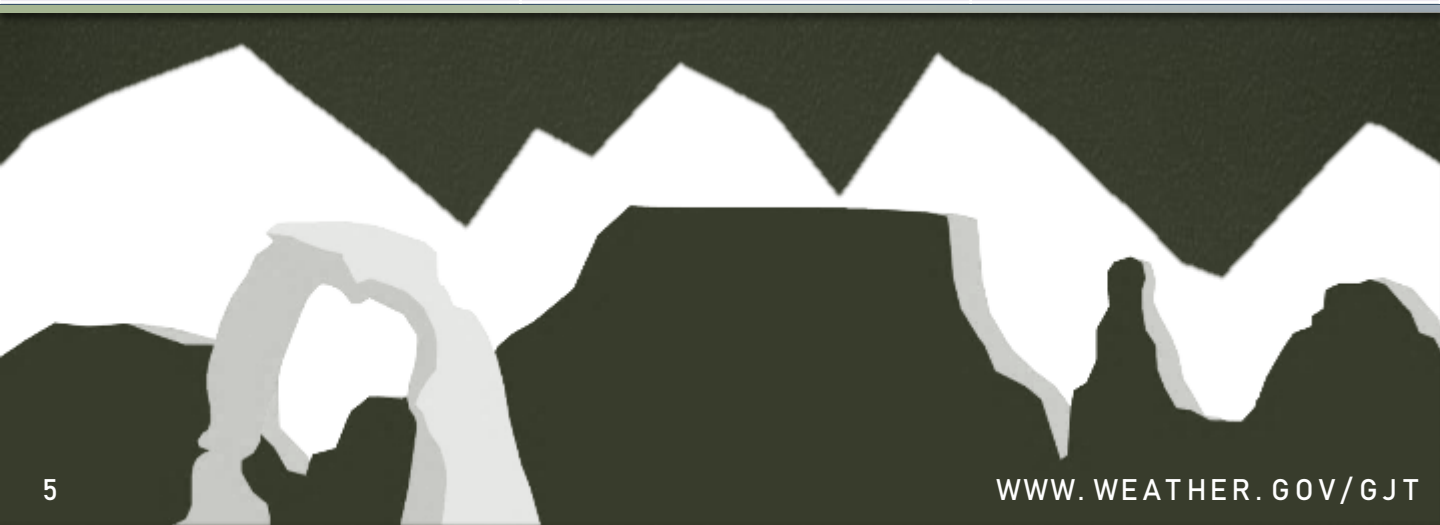


F E B R U A R Y  
2 0 2 3

# PRECIPITATION



Location	Total Precipitation (in.)	Departure from Normal (in.)
Aspen, CO	0.64	-0.26
Cortez, CO	1.01	0.00
Craig, CO	0.38	-0.51
Durango, CO	0.67	-0.44
Grand Junction, CO	0.63	+0.10
Meeker, CO	0.80	+0.04
Montrose, CO	0.64	+0.22
Rifle, CO	1.15	+0.55
Canyonlands Airport, UT	0.39	-0.09
Vernal, UT	0.21	-0.35

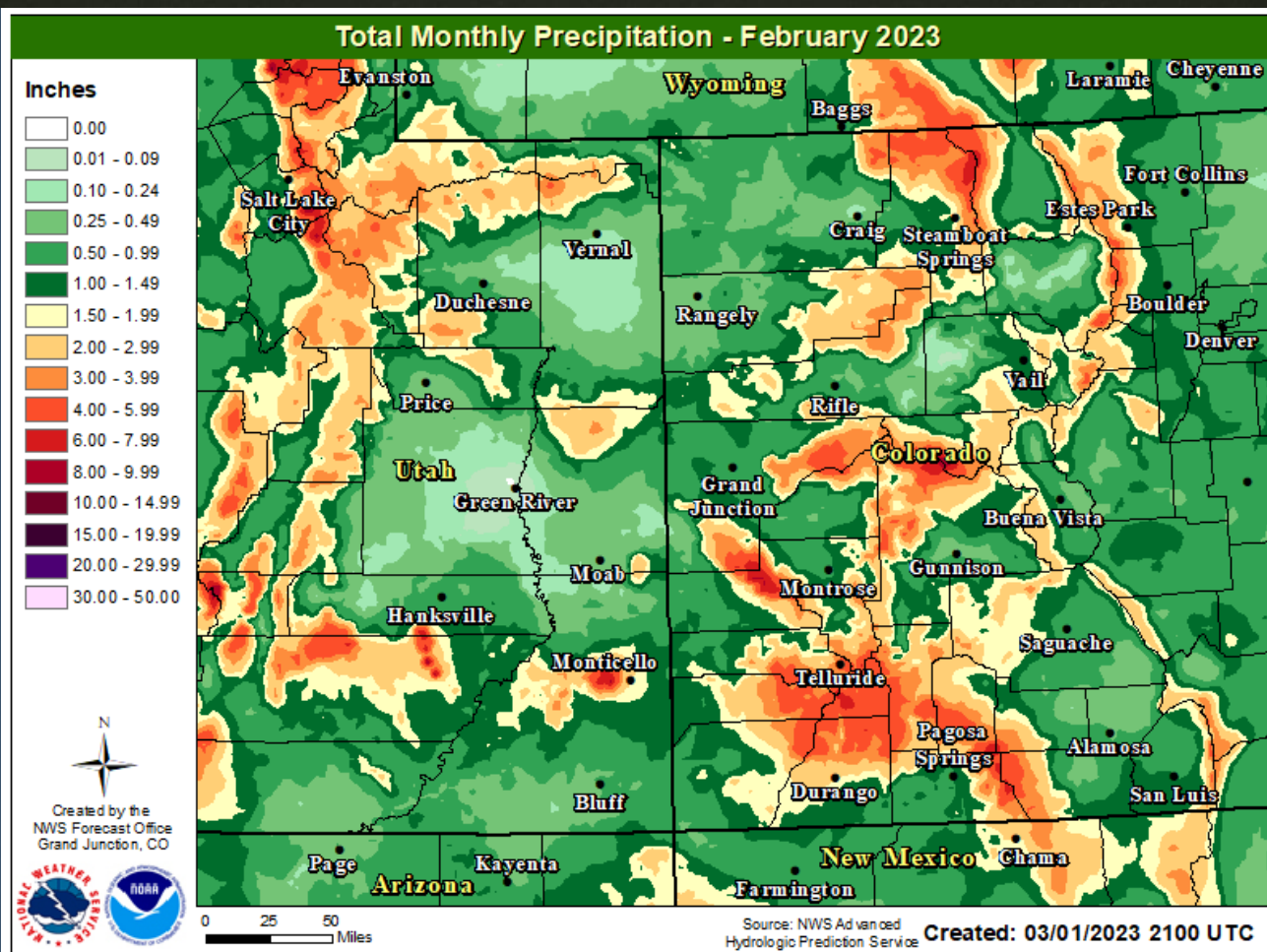


# FEBRUARY 2023

## CLIMATE SUMMARY



### TOTAL MONTHLY PRECIPITATION



# FEBRUARY 2023

## CLIMATE SUMMARY



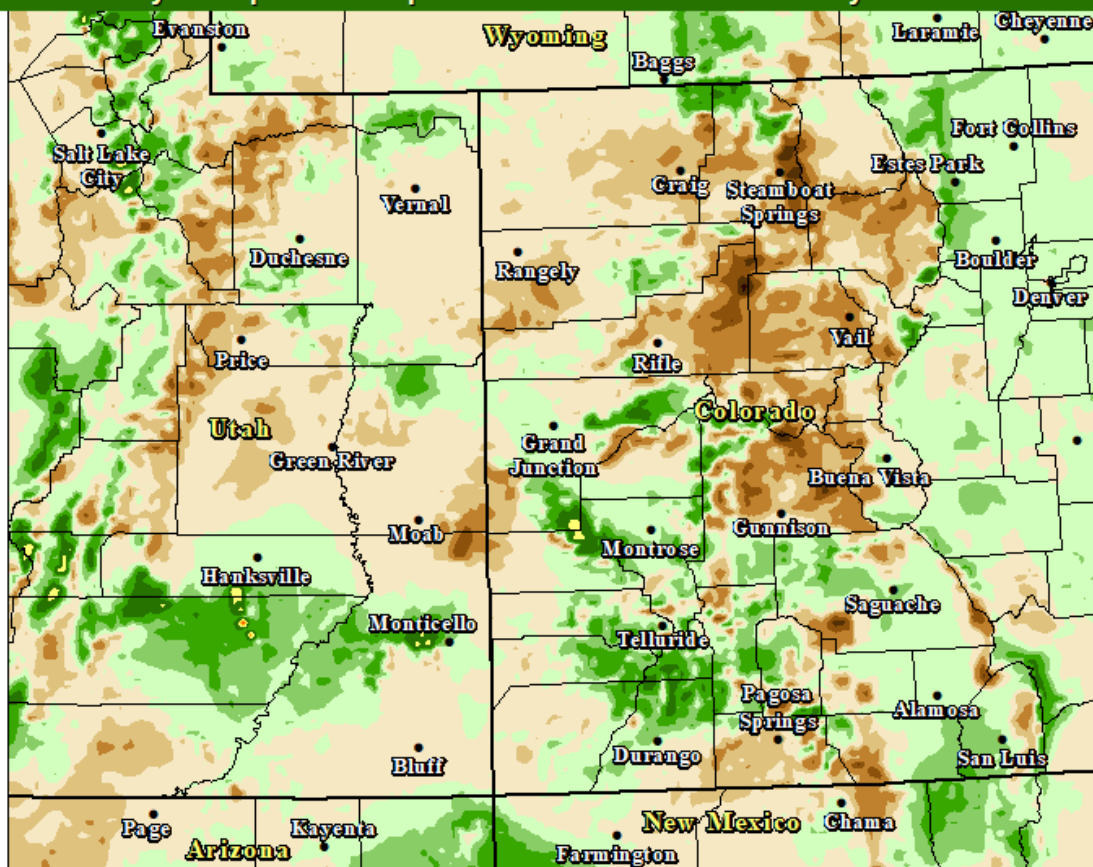
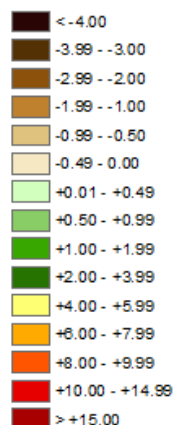
TOTAL  
MONTHLY

# PRECIPITATION

DEPARTURE FROM NORMAL

Total Monthly Precipitation Departure From Normal - February 2023

Inches



Created by the  
NWS Forecast Office  
Grand Junction, CO



0 25 50  
Miles

Source: NWS Advanced  
Hydrologic Prediction Service

Created: 03/01/2023 2100 UTC

# FEBRUARY 2023

## CLIMATE SUMMARY



DAILY  
RECORDS

# R E P O R T

*A total of 1 daily record was set across the primary climate sites*

Site	Date	Record Type	New Record	Previous Record
Grand Junction, CO	February 15th	Snowfall	4.0"	2.0", set in 1940

High Max

Low Max

Precip

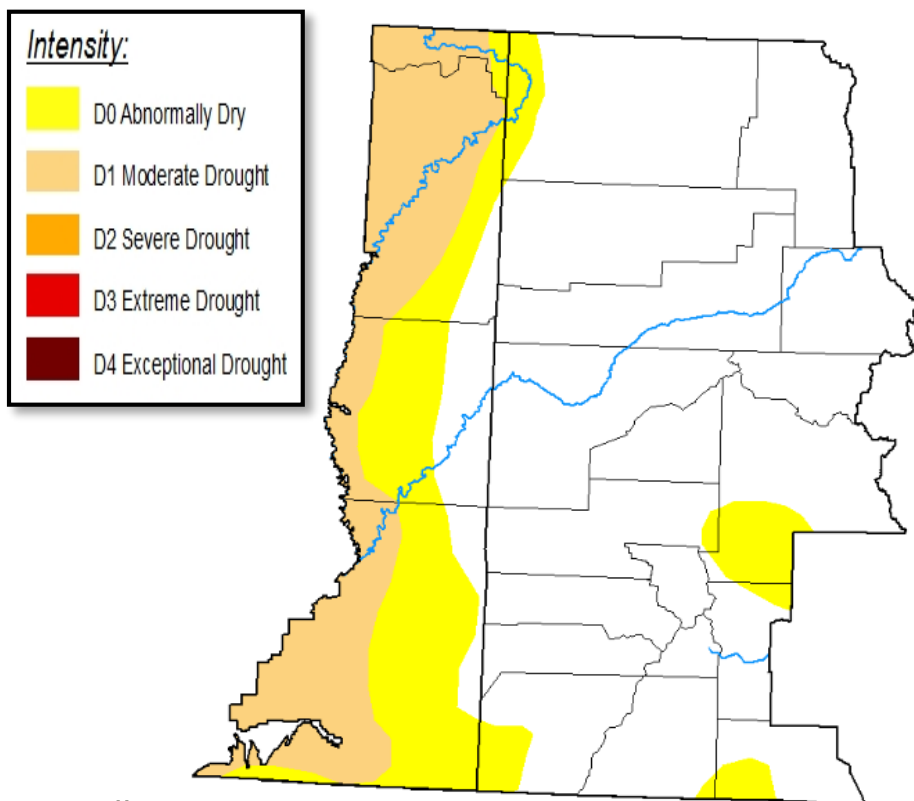
High Min

Low Min

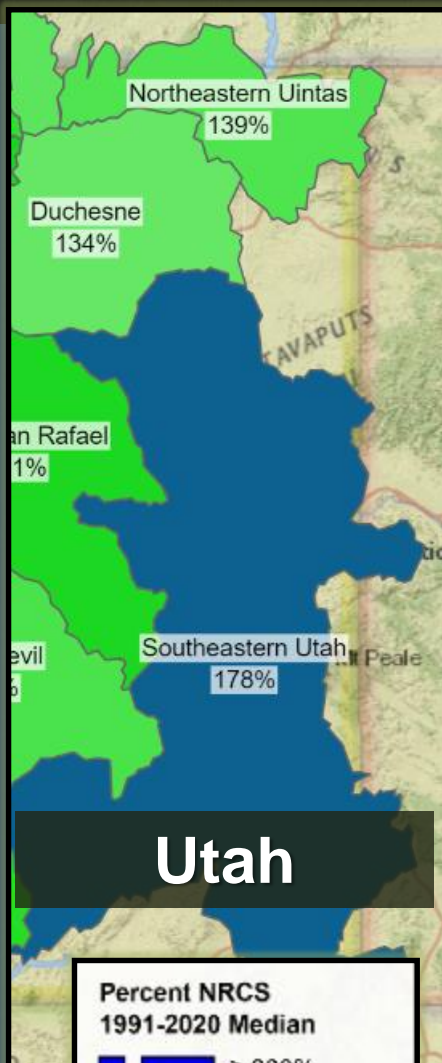




*Drought across eastern Utah continues to improve, with the total eradication of Severe (D2) drought areas. Abnormally Dry (D0) conditions continue to nibble away at the region of Moderate (D1) drought, and areas of no drought continue to nibble away at the areas of Abnormally Dry (D0) conditions along the UT/CO border. Even the areas of Abnormally Dry (D0) conditions along the CO/NM border and up into the southeastern San Juan mountains has shown improvement over the last month.*

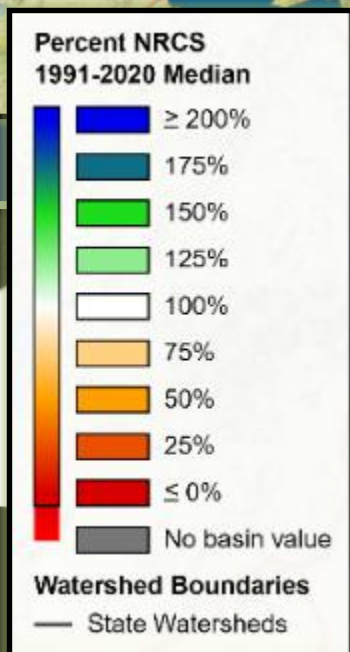
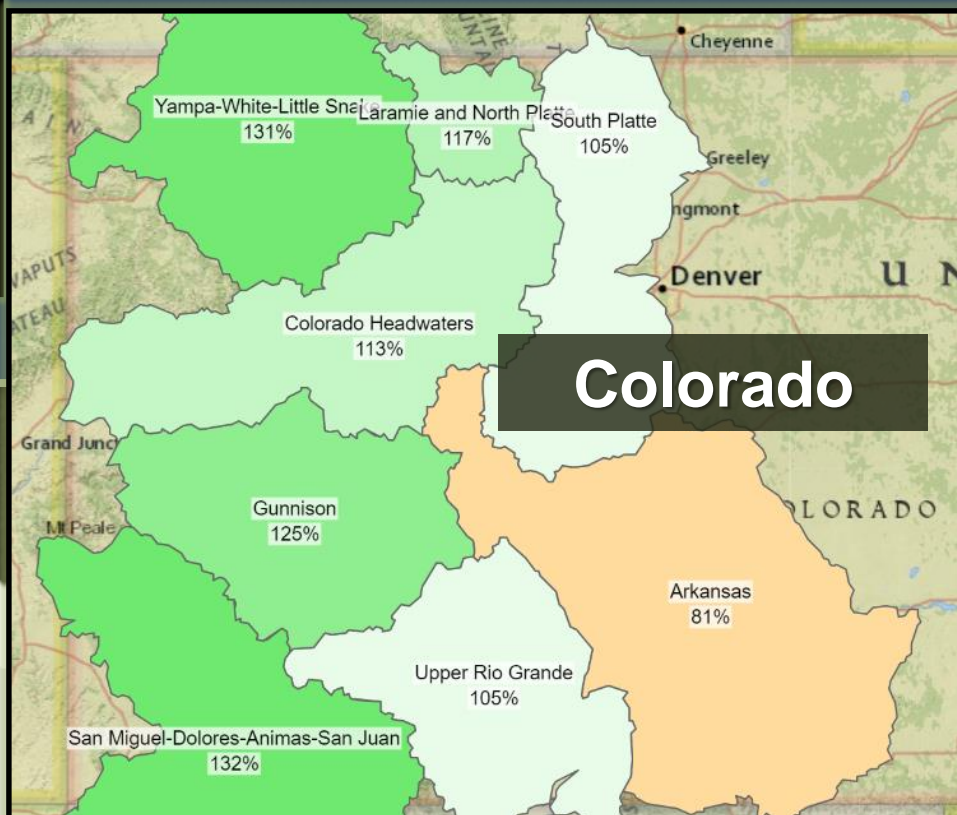


Source: <http://droughtmonitor.unl.edu>



*As of March 1<sup>st</sup>, snowpacks remain above normal for the time of year. Although, with February coming out a bit drier than previous months this summer, the percentages are a bit less impressive. Three of the four western Colorado basins are sitting at 125-135% of normal, with the last basin, Colorado Headwaters, sitting at 110-120% of normal.*

*The eastern Utah basins are doing a bit better. The Northeastern Uintas and Duchesne basins are at 130-40% of normal, and the Southeast Utah basin is at 170-180% of normal*



M a r c h  
2 0 2 3

# OUTLOOK

## TEMPERATURES & PRECIPITATION



*Current guidance from the Climate Prediction Center (CPC) is leaning toward cooler than normal temperatures across all of eastern Utah and western Colorado, with an area of equal chances of above or below normal temperatures just touching the far southeastern corner of Grand Junctions area. The precipitation guidance follows a similar trend, with a leaning toward above normal precipitation for the next month across the whole area.*

**Below**

**Temperatures**

**Above**

**Precipitation**

Equal  
Chances

Equal  
Chances