

NWS GRAND JUNCTION COLORADO



A L O O K
BACK AT

MAY 2022

WEATHER ACROSS E UTAH / W COLORADO

The month of May continued on as the entire spring season has been – unsettled and windy. Several areas of low pressure swung through the area over the course of the month, bringing gusty winds and critical fire weather ahead of them and mountain precipitation (including snow!) behind them. By mid-month temperatures began to warm up finally, running at to above normal for the second half of the month. Periodic windy conditions and critical fire weather continued through the month. The month ended with a few days of afternoon convection, including a severe thunderstorm that brought hail and strong winds to the Grand Valley on the 29th.



MAY 2022

CLIMATE SUMMARY



TABLE OF CONTENTS

NOTE: all data mentioned is collected from our automated observing stations from 10 airports across the area. Some observers in more remote areas DECEMBER have measured warmer or colder temperatures, or more or less precipitation than mentioned in this summary.

| PAGE # | PAGE TITLE |
|--------|--|
| 1 | Cover |
| 2 | Table of Contents |
| 3 | Story of the Month |
| 4 | Temperatures |
| 5 | Precipitation |
| 6 | Total Monthly Precipitation |
| 7 | Monthly Precipitation Departure from Normal |
| 8 | Daily Records Report |
| 9 | Drought Conditions as of May 31 ST |
| 10 | Snowpack Conditions as of June 6 th |
| 11 | June Outlook |

STORY OF THE MONTH **FIRE AND ICE**

The month of May was characterized by wild swings between warm, dry, and windy weather followed up by much colder conditions and mountain snow. There were several periods through the month where Red Flag Warnings for critical fire weather conditions in southwest Colorado and southeast Utah would be in effect at the same time as winter weather highlights for the mountains of northwest Colorado and northeast Utah.

TODAY


Very Warm
Dry
Windy

- High Wind Warnings and Wind Advisories In Effect
- Red Flag Warnings In Effect
- 11 AM MDT to 10 PM MDT

WIND GUSTS

35-65 MPH

MAX WIND GUSTS THIS AFTERNOON



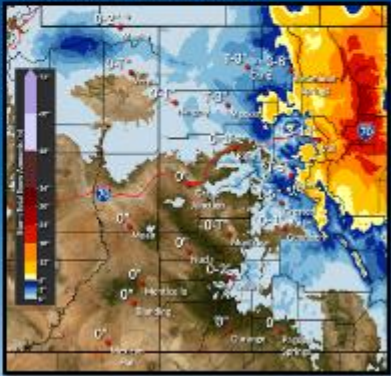
NATIONAL WEATHER SERVICE
FEDERAL BUREAU OF INVESTIGATION

TONIGHT

A strong cold front will move through tonight into Friday and bring...

- Much colder temperatures
- Snow in the northern/central mountains and high valleys
- Winter Weather Advisory In Effect

TOTAL SNOWFALL THROUGH SATURDAY



Grand Junction CO Thursday, May 19, 2022

M 2
A 0
Y 2

TEMPERATURES



| Location | Average Temp (°F) (VS Normal) | Warmest Temp (°F) | Coldest Temp (°F) |
|-------------------------|----------------------------------|-------------------|-------------------|
| Aspen, CO | 49.8 (-0.2) | 78 on 5/27 | 24 on 5/13 |
| Cortez, CO | 57.0 (+1.1) | 88 on 5/27 | 23 on 5/4 |
| Craig, CO | 49.2 (-2.6) | 83 on 5/16, 27 | 22 on 5/13, 21 |
| Durango, CO | 55.6 (+2.8) | 86 on 5/26, 27 | 22 on 5/5 |
| Grand Junction, CO | 61.7 (-0.3) | 90 on 5/27 | 29 on 5/21 |
| Meeker, CO | 49.5 (-3.1) | 83 on 5/16, 27 | 22 on 5/21 |
| Montrose, CO | 59.5 (+0.9) | 88 on 5/27 | 32 on 5/4 |
| Rifle, CO | 56.7 (-0.6) | 90 on 5/27 | 29 on 5/21 |
| Canyonlands Airport, UT | 62.1 (-0.8) | 92 on 5/27 | 28 on 5/4 |
| Vernal, UT | 55.7 (-1.8) | 89 on 5/27 | 30 on 5/10 |



M 2
A 0
Y 2

PRECIPITATION



| Location | Total Precipitation (in.) | Departure from Normal (in.) |
|-------------------------|---------------------------|-----------------------------|
| Aspen, CO | 1.34 | -0.18 |
| Cortez, CO | T | -0.74 |
| Craig, CO | 1.98 | +0.35 |
| Durango, CO | 0.03 | -0.71 |
| Grand Junction, CO | 0.34 | -0.49 |
| Meeker, CO | 2.12 | +0.38 |
| Montrose, CO | 0.39 | -0.43 |
| Rifle, CO | 1.20 | +0.06 |
| Canyonlands Airport, UT | 0.04 | -0.56 |
| Vernal, UT | 0.59 | -0.37 |

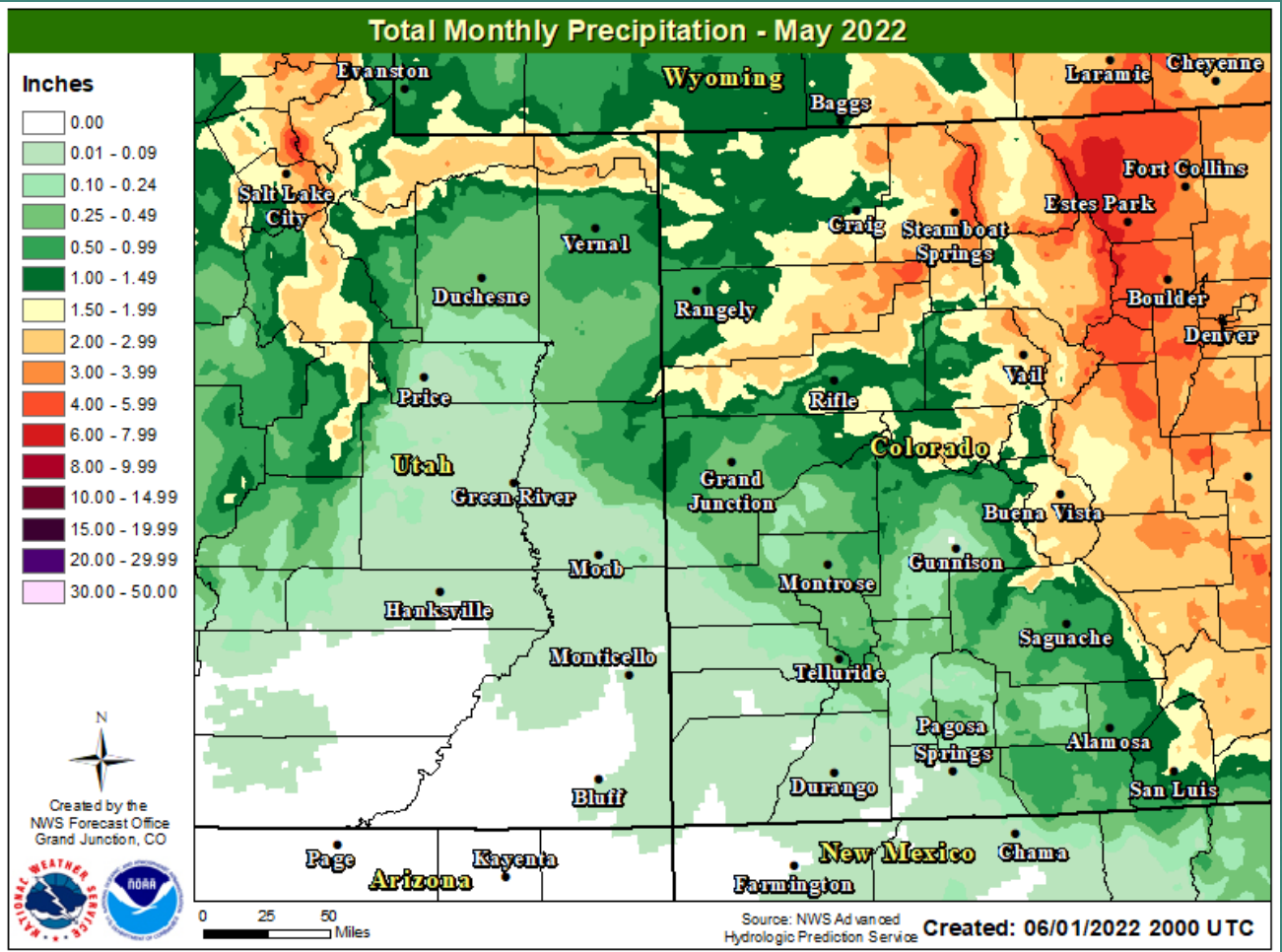


MAY 2022

CLIMATE SUMMARY



TOTAL MONTHLY PRECIPITATION



MAY 2022

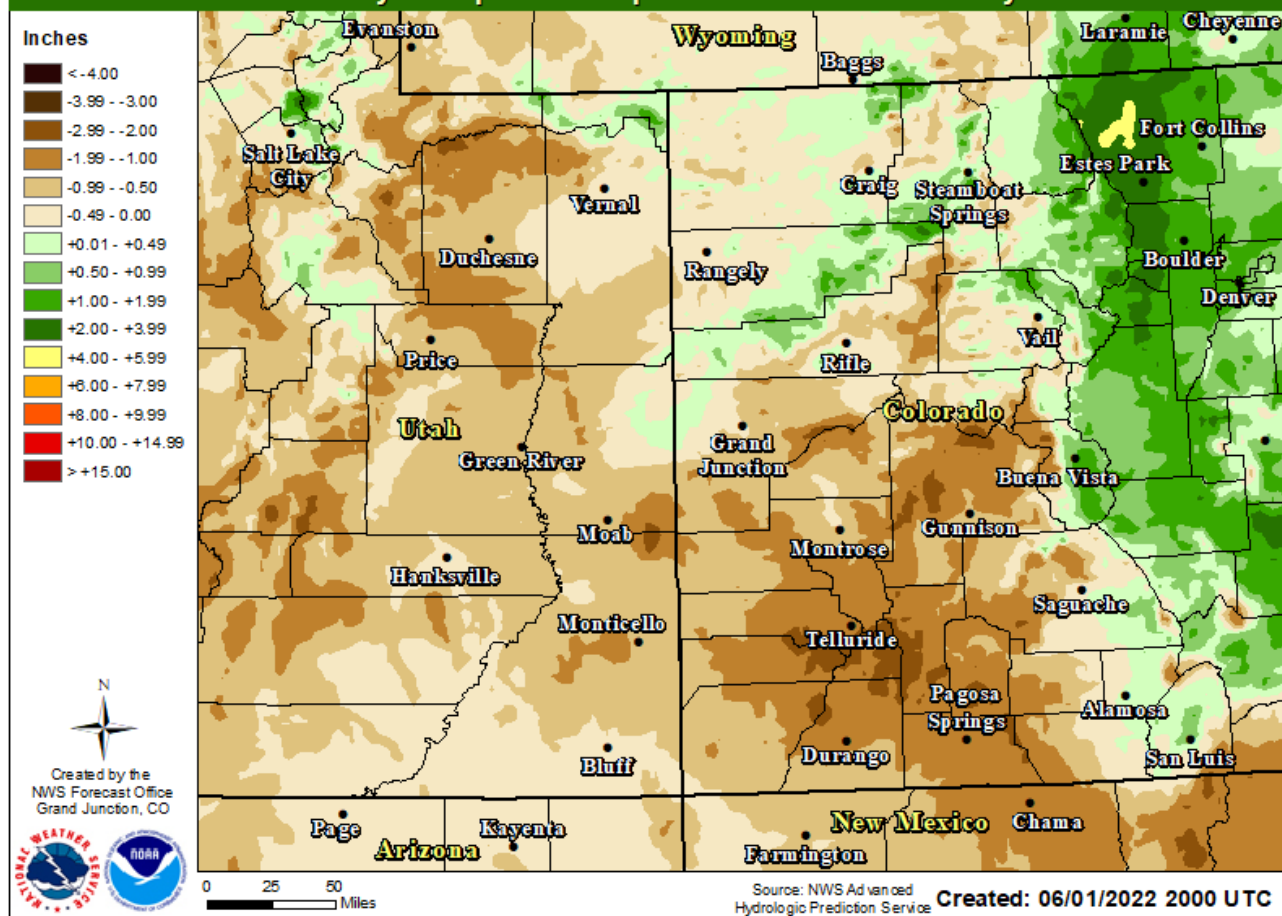
CLIMATE SUMMARY



TOTAL MONTHLY PRECIPITATION

DEPARTURE FROM NORMAL

Total Monthly Precipitation Departure From Normal - May 2022



MAY 2022

CLIMATE SUMMARY



DAILY RECORDS **REPORT**

A total of 1 daily record was set across the primary climate sites

| Site | Date | Record Type | New Record | Previous Record |
|--------------------|----------|---------------------|------------|-------------------|
| Grand Junction, CO | May 21st | Low Min Temperature | 29 F | 33 F, set in 1974 |

High Max

Low Max

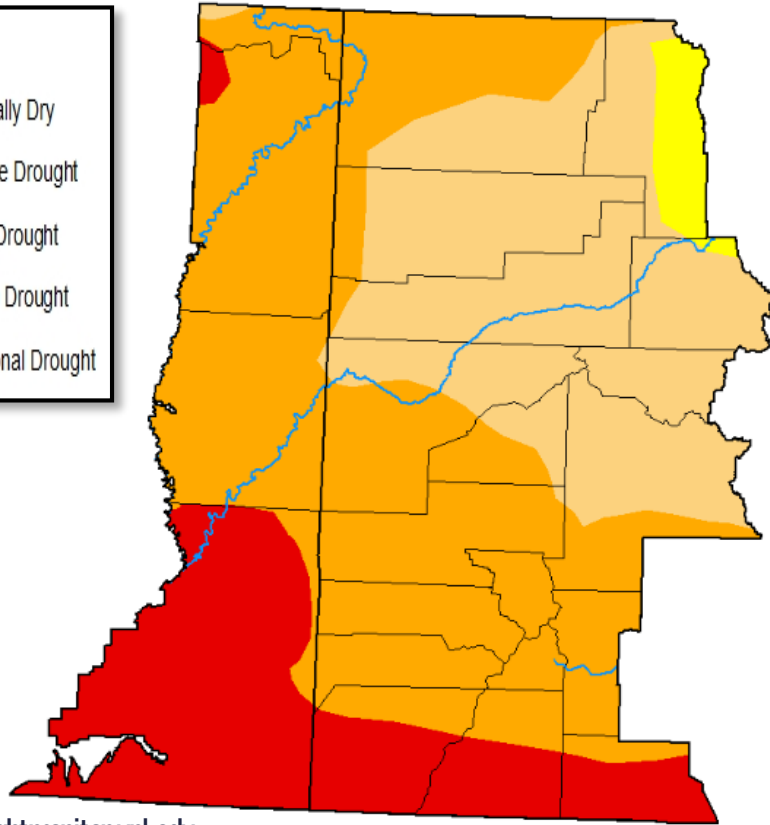
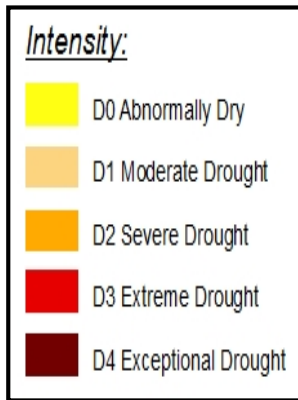
Precip

High Min

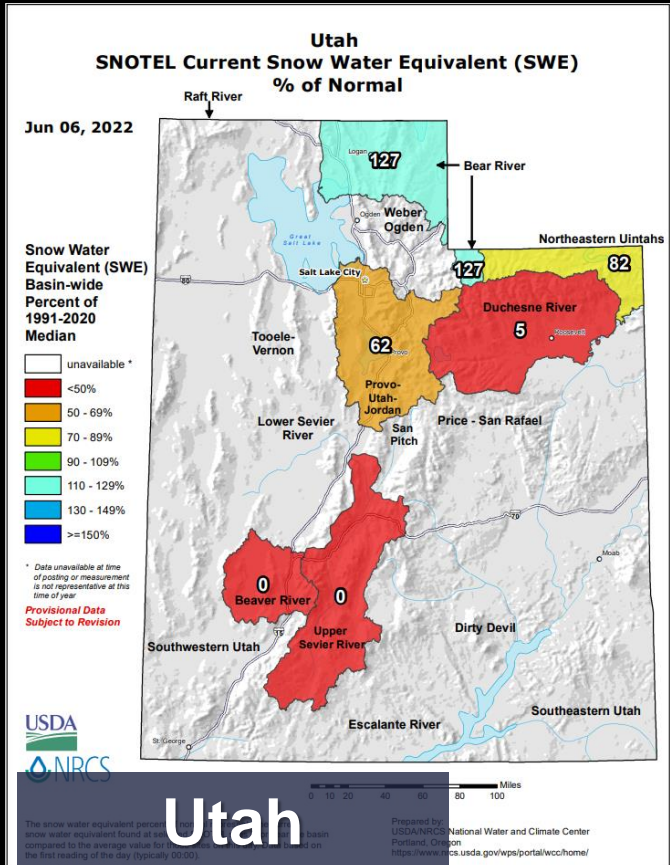
Low Min



Extreme (D3) drought remains across much of southeast Utah and has expanded across the valleys of southwest Colorado. A pocket has also appeared in northeast Utah. Little change has occurred in the areas of Severe (D2) and Moderate (D1) drought across the area, although a pocket of the Abnormally Dry (D0) category has appeared along the Northern Divide mountains.

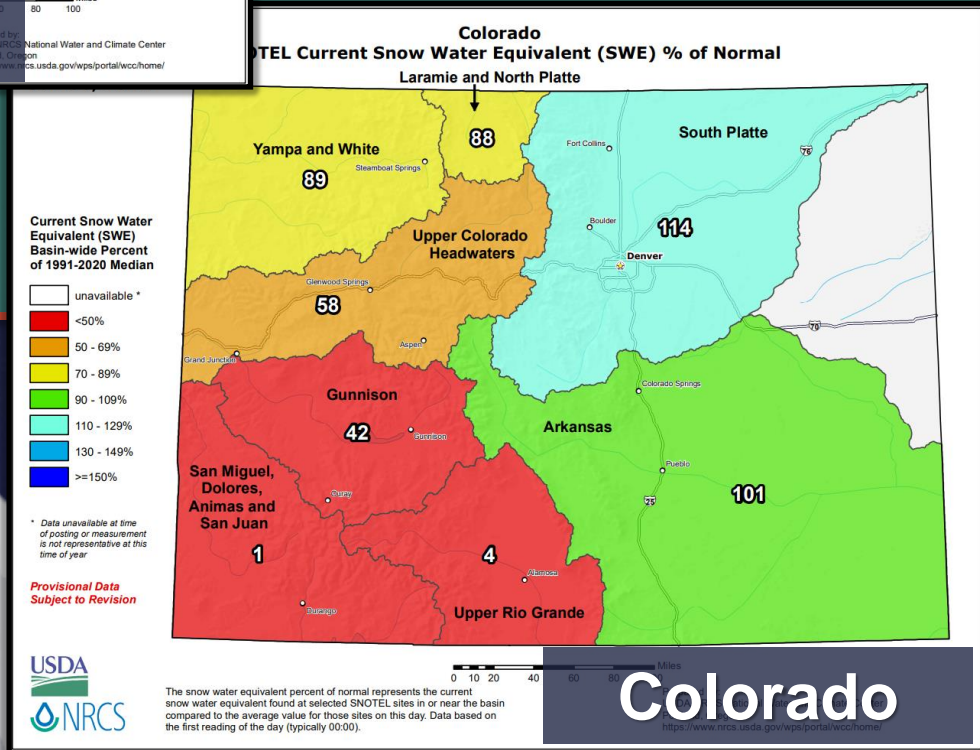


Source: <http://droughtmonitor.unl.edu>



Most of eastern Utah has fully melted out at this point, although the eastern Uintahs are holding onto 80% of the average snowpack for this time of year.

Southwestern Colorado has nearly completely melted out. Conditions improve as one moves north, with the Gunnison basin at 40-50% of normal, the upper Colorado Headwaters at 50-60% of normal, and the Yampa and White Basin at around 90% of normal



J U N E
2 0 2 2

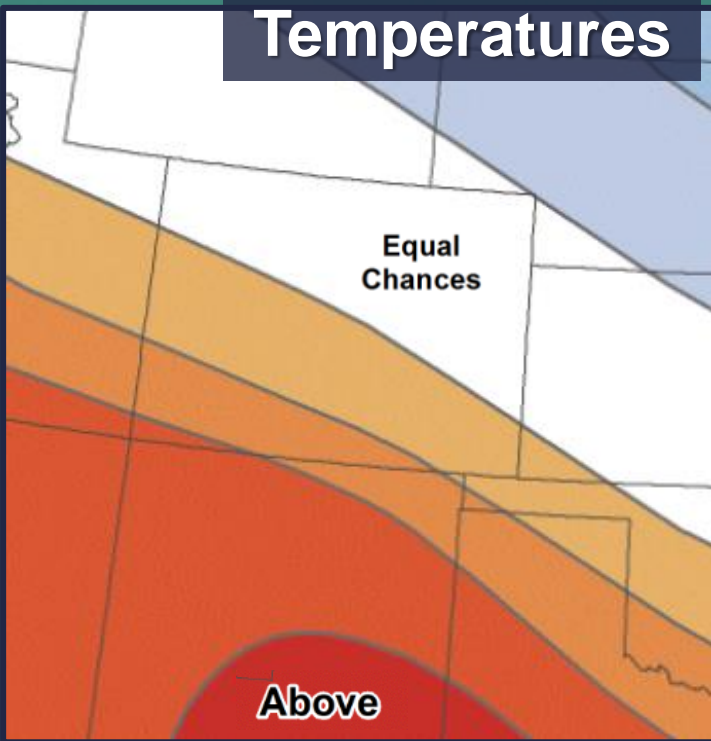
OUTLOOK

TEMPERATURES & PRECIPITATION

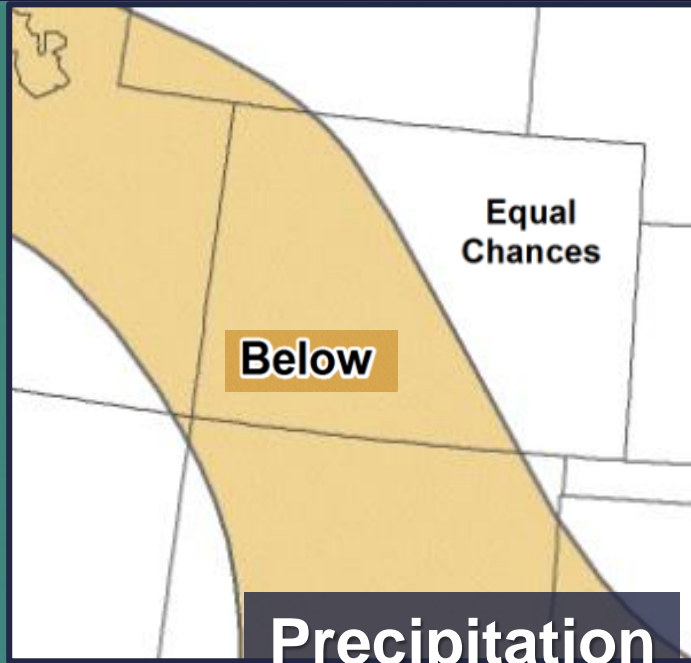


For the Four Corners area, temperatures are likely to trend above normal for the month of June. Central portions of eastern Utah and western Colorado are leaning slightly toward above normal temperatures, and northeastern Utah and northwestern Colorado have equal chances of seeing above or below normal temperatures. All of eastern Utah and western Colorado are trending slightly toward below normal precipitation for the month.

Temperatures



Below



Precipitation

