

Northwest Flow Snow Events

Winter Weather Prep Seminar – December 2001

Modified December 2005

Laurence G. Lee
National Weather Service
Greenville-Spartanburg Airport
Greer, SC

Prepared for a forecaster training seminar at
WFO GSP

Goals

- Increase awareness of Northwest Flow Snow Events
- Identify situations in which snow will occur in the southern Appalachians during periods of northwest flow
- Improve forecasting

What is a Northwest Flow Snow (NFS) Event?

...snowfall in the southern Appalachians produced - or augmented - by upslope flow caused by low-level northwest winds...

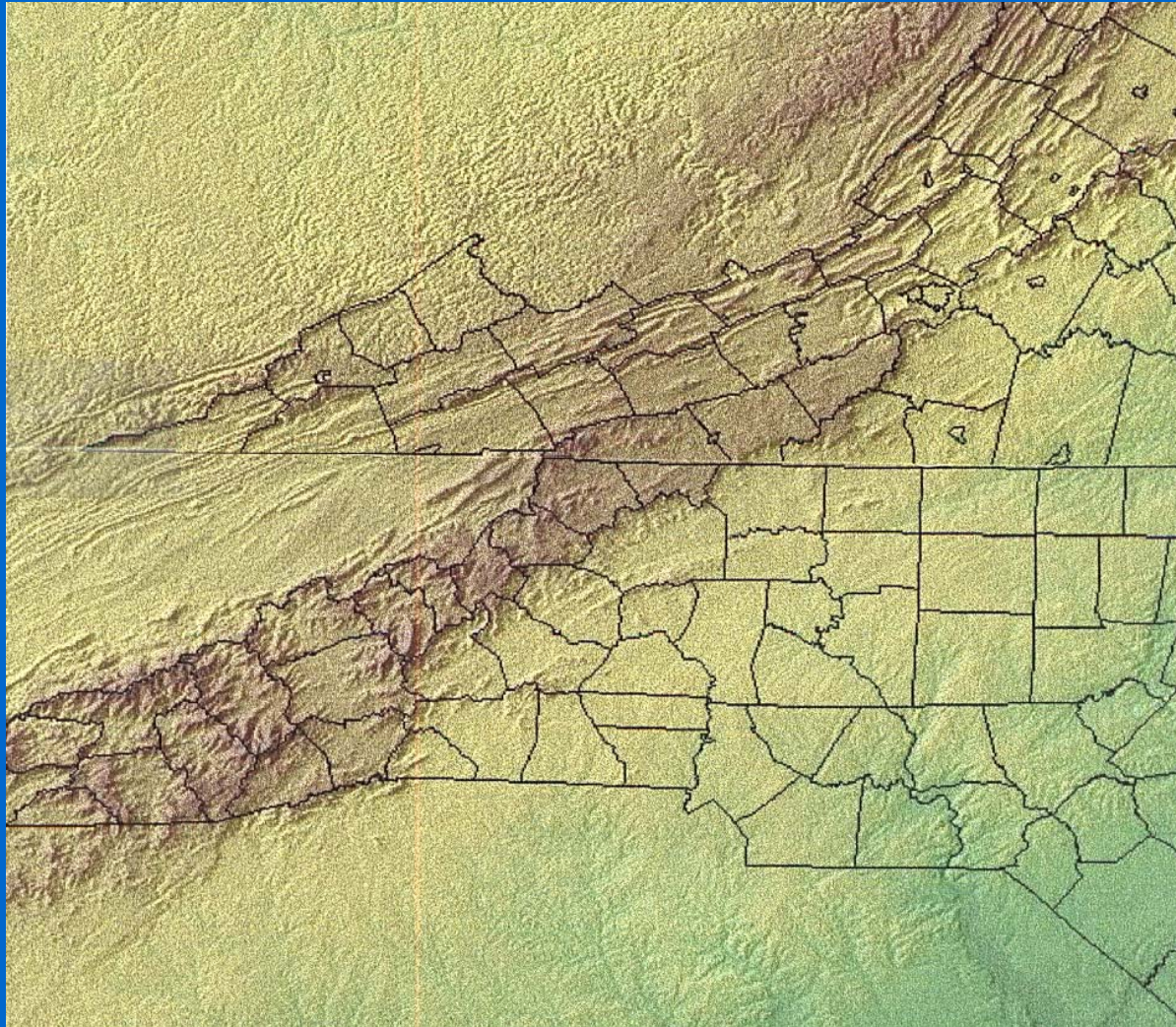
(The snow is often not associated with synoptic scale precipitation.)

Northwest Flow Snow

Depends on:

- Air mass characteristics and synoptic scale pressure pattern
- Local vertical motion caused by terrain
- Microphysical processes in the cloud

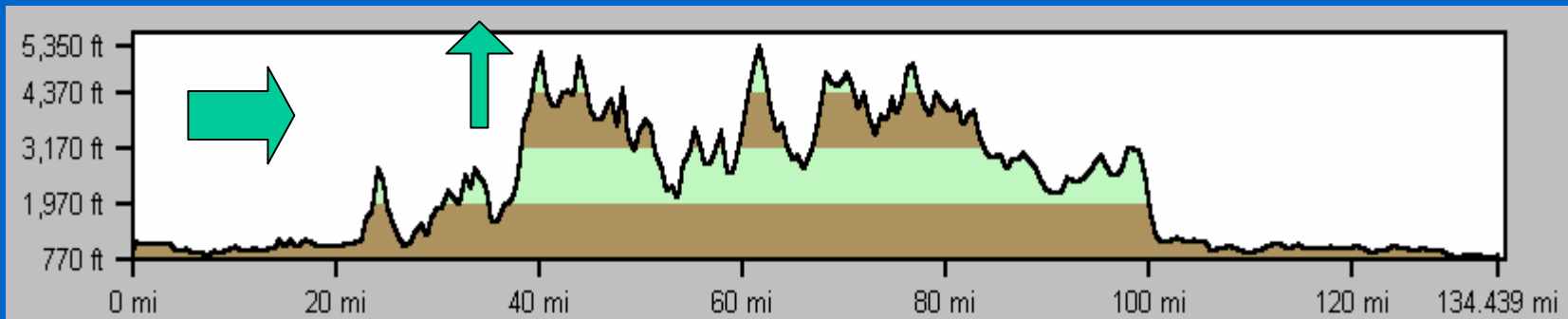
Northwest Flow Snow Study Area



Upslope Flow

NW Wind Encounters Significant Rise in Terrain

Along the North Carolina / Tennessee border, elevation increases of 4000 ft to 5000 ft over very short distances are common

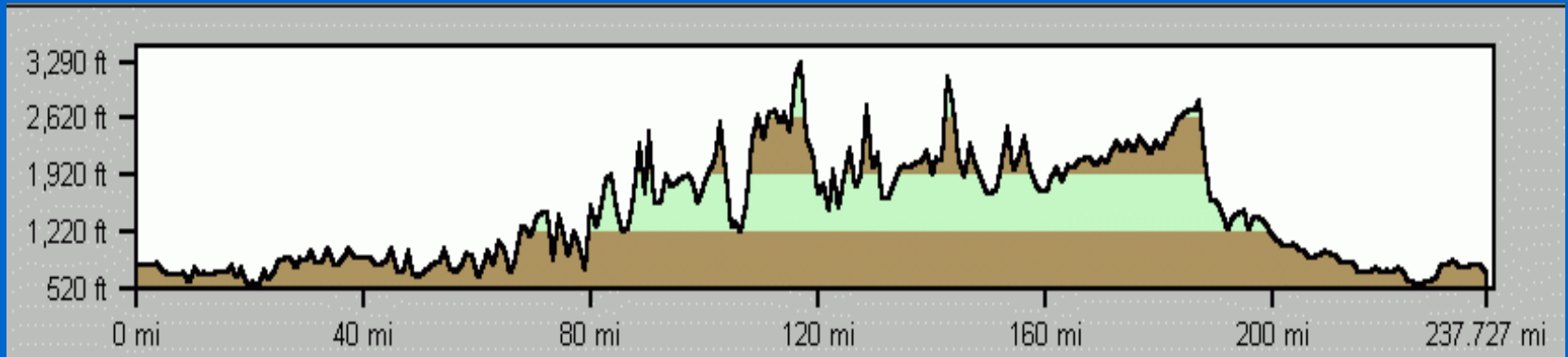


Knoxville

NC Mountains

Greenville

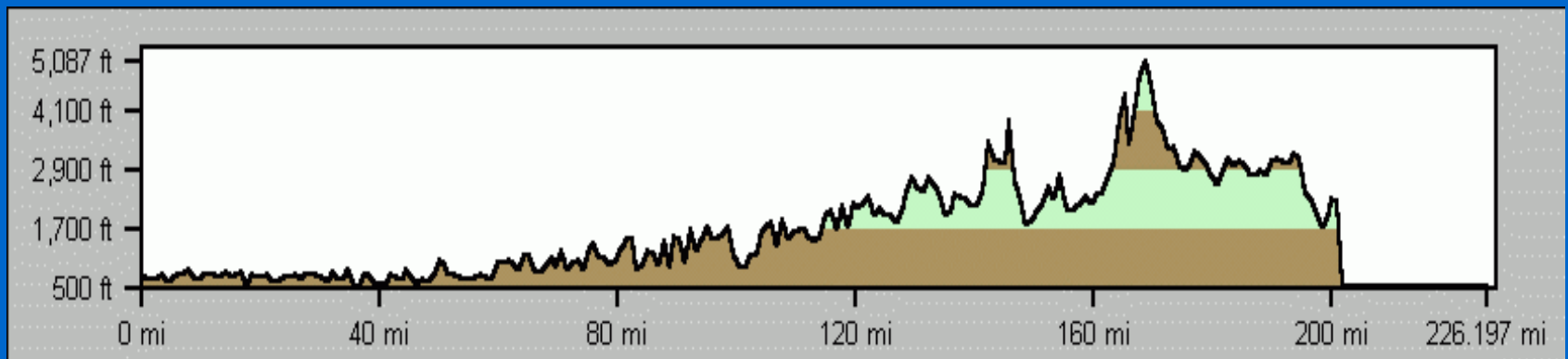
Blacksburg CWA



WV

VA Mountains

NC



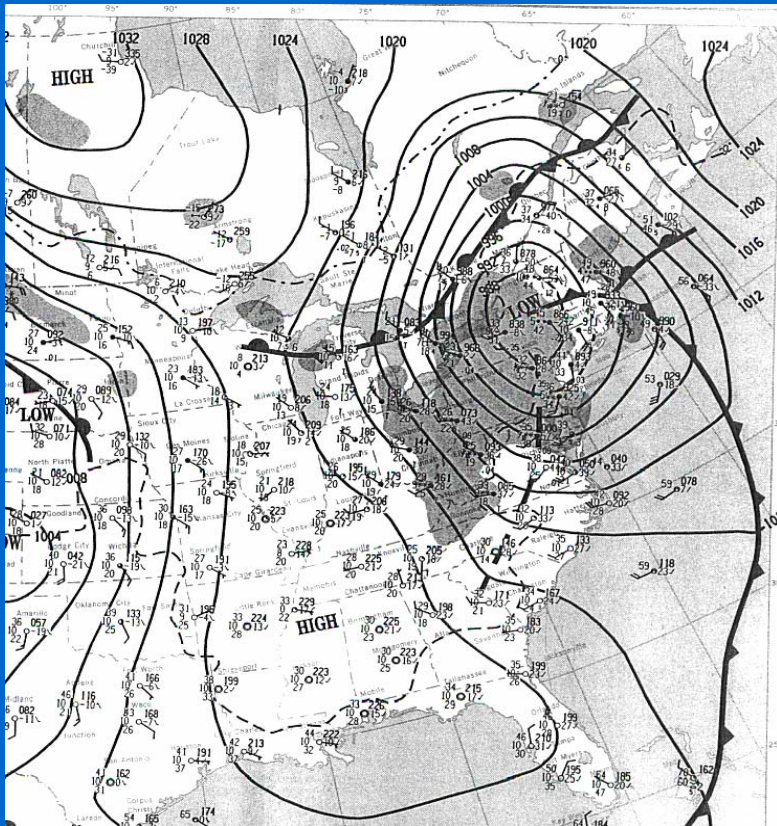
KY

WV / VA / NC Mountains

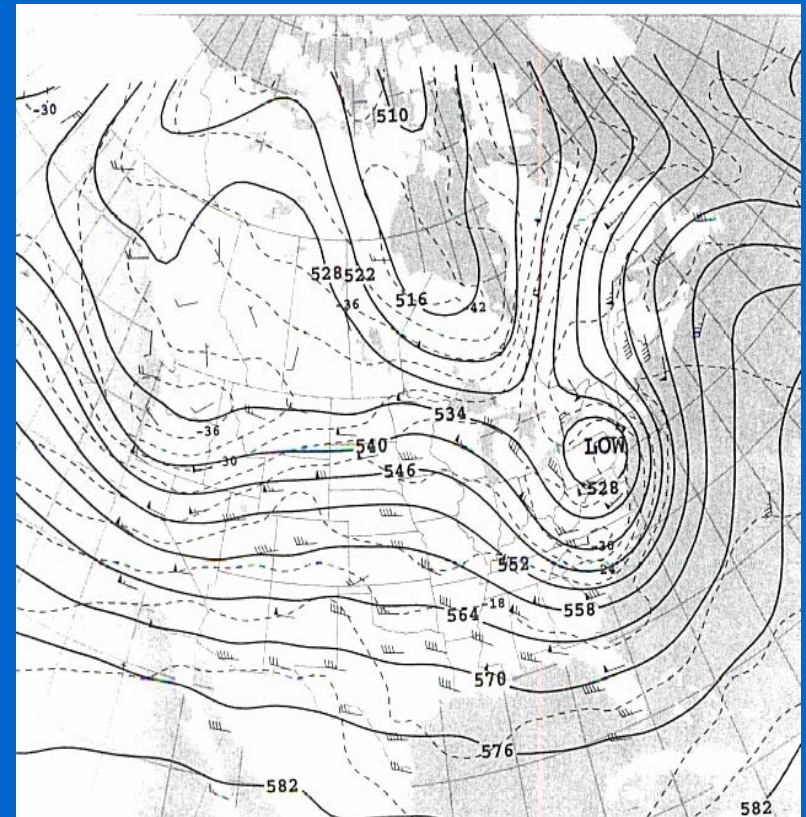
NC

Typical Surface and Upper Air Maps

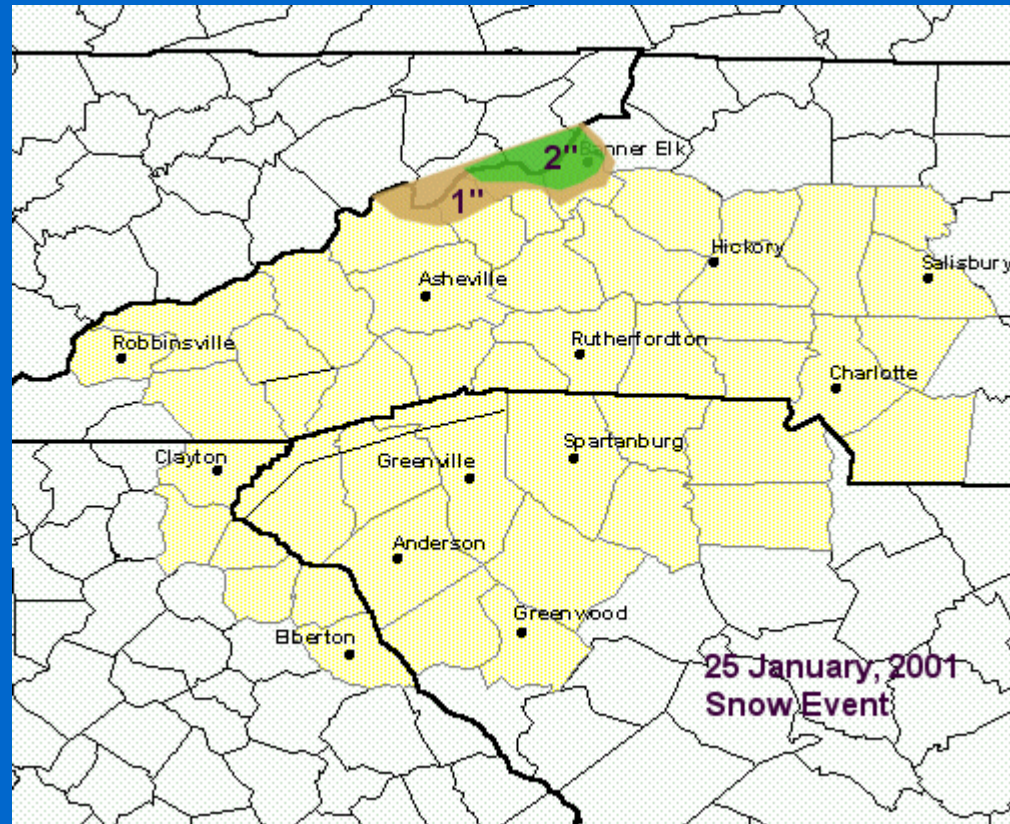
Surface



500 mb

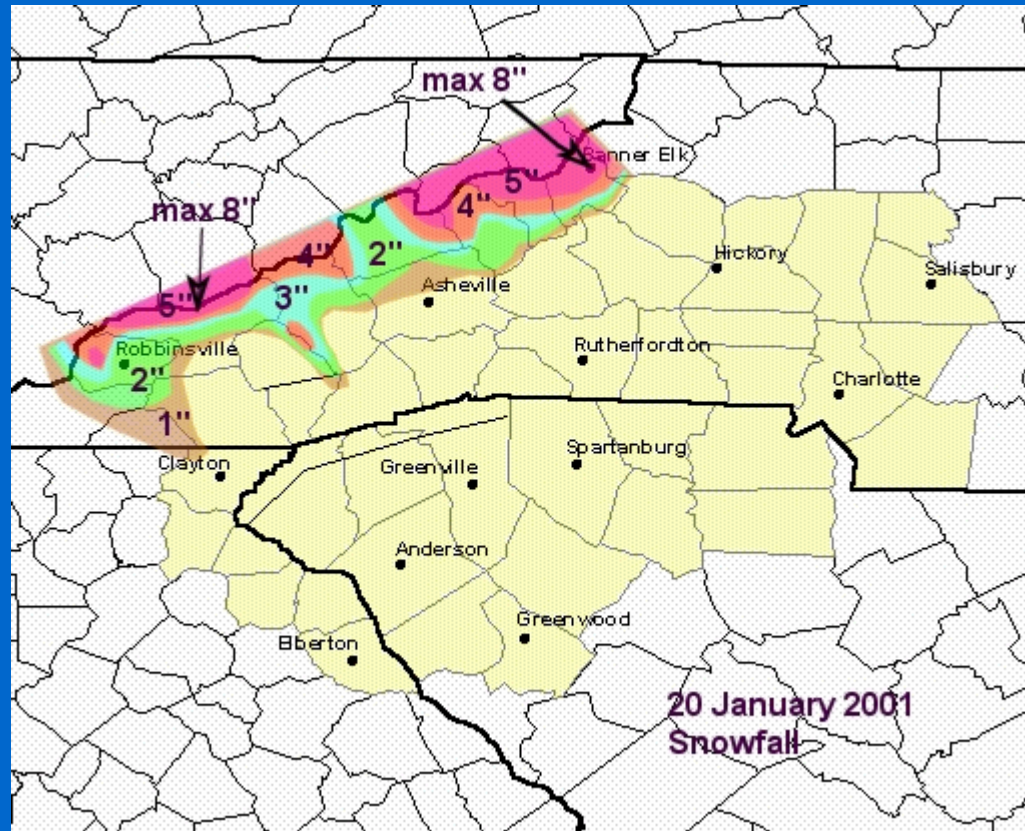


Example of Snow Distribution



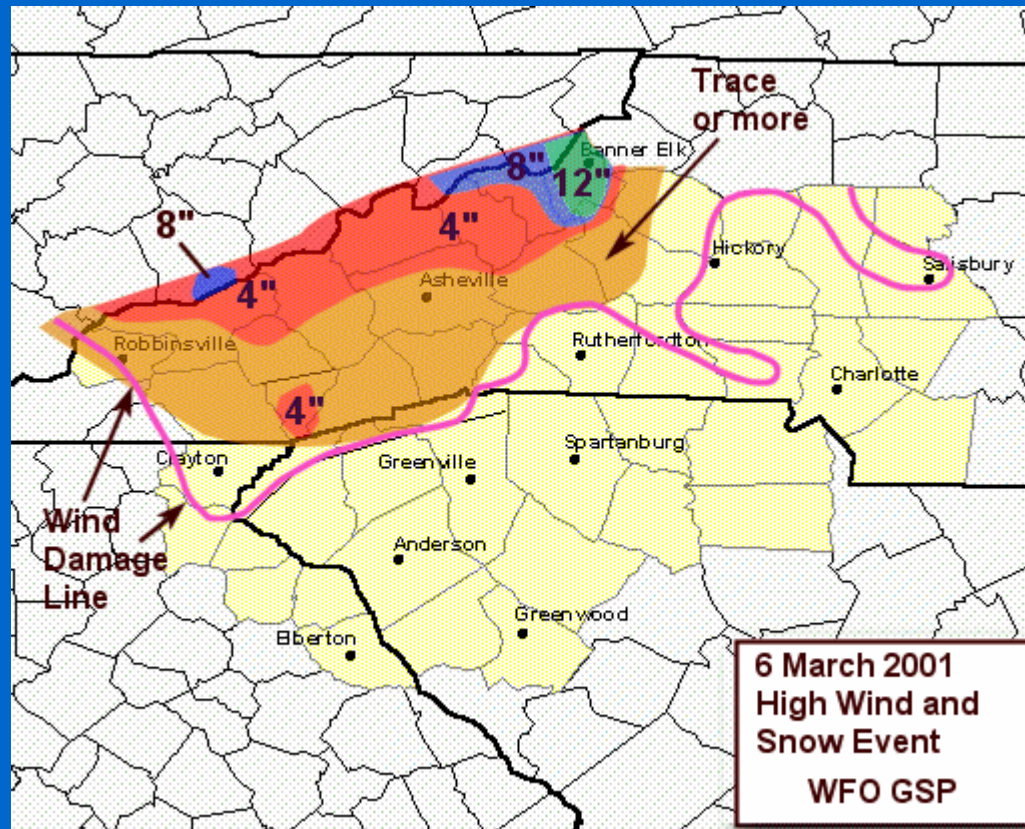
A minor event – Counties in GSP CWA most susceptible to NW Flow snow

Example of Snow Distribution



Typical distribution of snow flurries and snow showers during NW flow event in which moisture (windward cloud field) extends along entire range of Appalachians. Note the proximity of the snow to the TN/NC border.

Example of Snow Distribution



Typical snowfall distribution during an event consisting of deep moisture and terrain-induced upward motion augmented by a short wave embedded in the northwest flow.

Primary Characteristics of Northwest Flow Snow Events

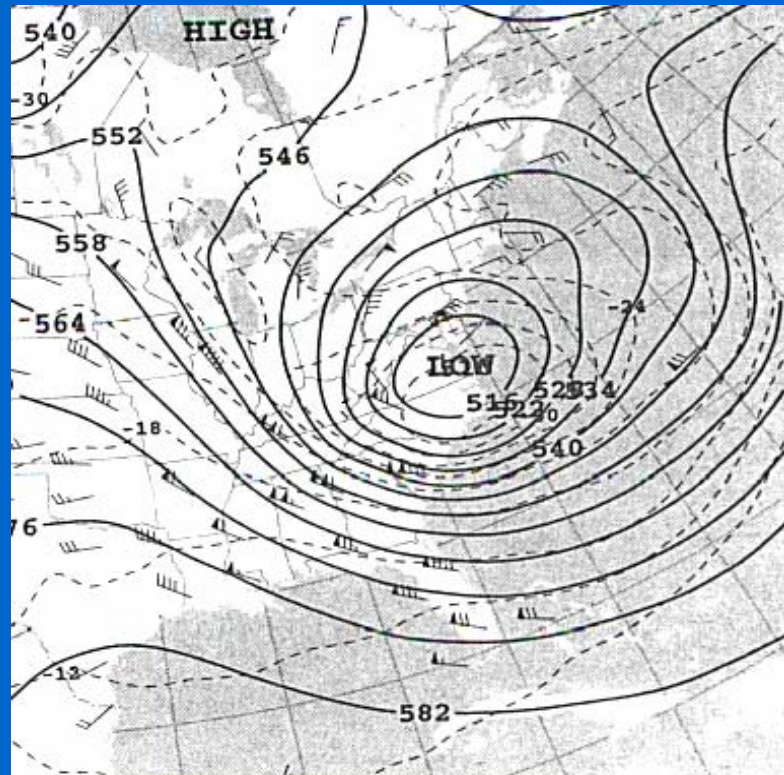
- Often not associated with extratropical cyclone precipitation shield
- Forced primarily by low-level orographic lift
 - Consider component of wind orthogonal to mountains
 - Terrain-induced vertical motion proportional to wind speed

Primary Characteristics

- Occasional augmentation of snowfall by forcing that can be identified using QG diagnostics
- Snowfall pattern quite irregular and accumulation highly variable
 - Sometimes only flurries
 - Sometimes warning criteria accumulation

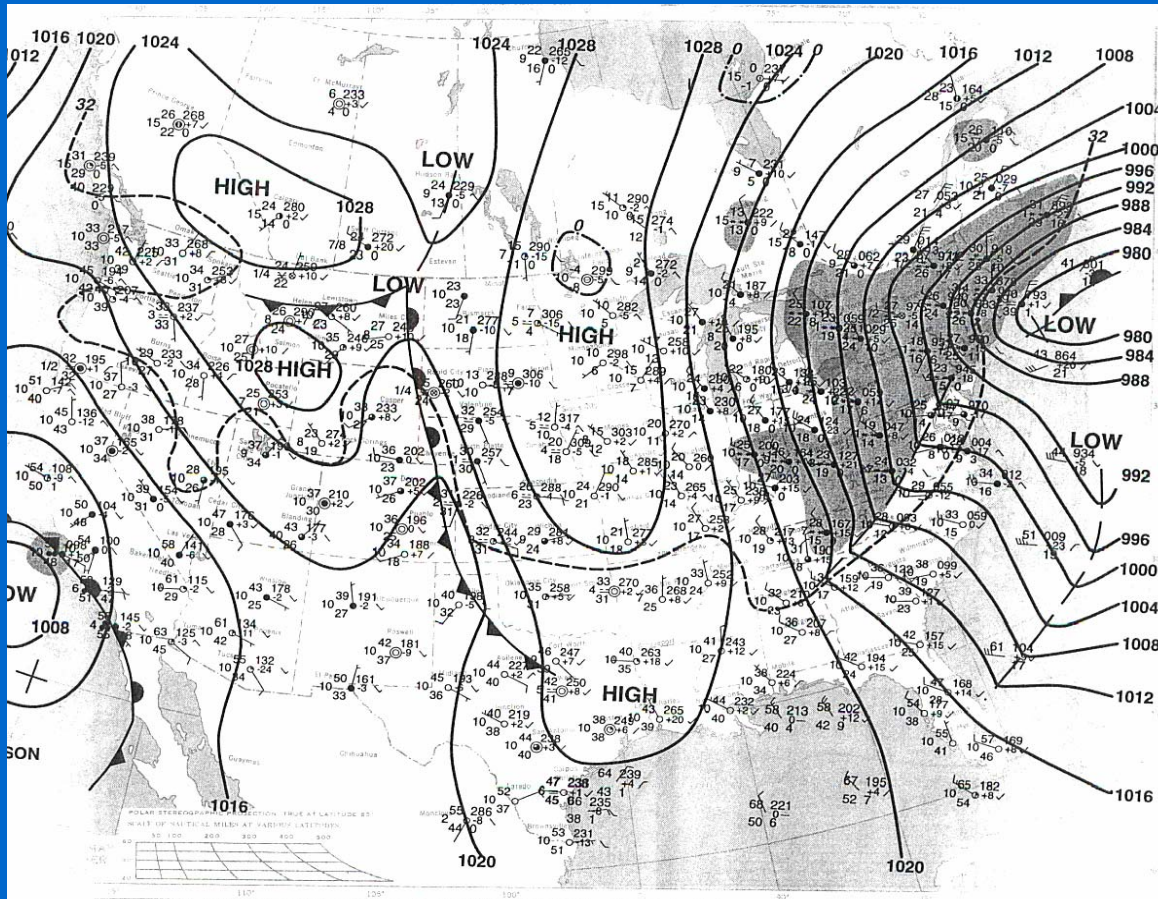
Map Types

- Favorable synoptic scale patterns include:
 - Northwest wind (preferably with cyclonic curvature) at 500 mb or below with trough or deep cut-off low east or northeast of CWA



Map Types

- Surface high pressure system over central United States building into southeastern states



Upward Motion - ❄️ Equation?

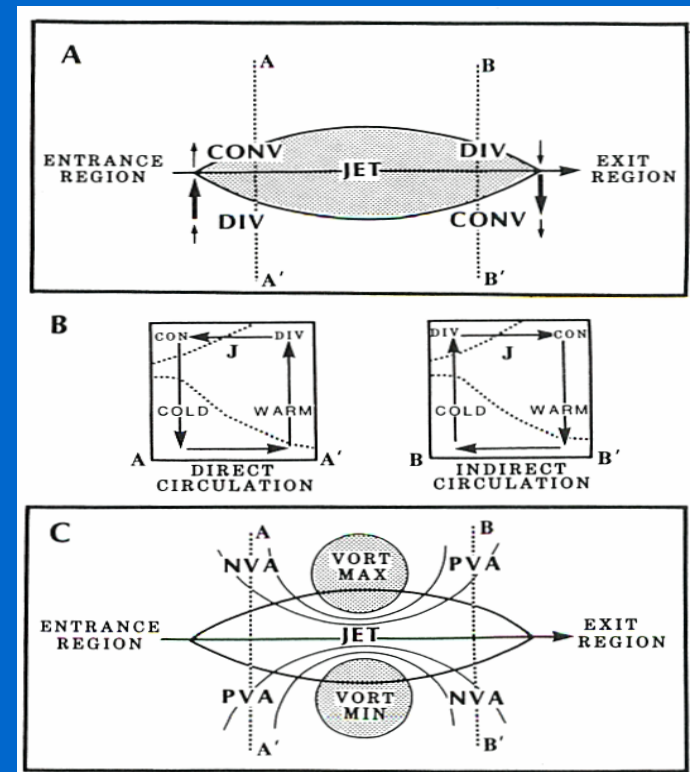
$$\begin{aligned} &\text{❄️ 🔔 Laplacian of temperature advection} \\ &+ \\ &\text{Differential Vorticity Advection} \end{aligned}$$

- During Northwest Flow Events, QG forcing often does not favor upward motion and precipitation
 - NW Flow Snow usually occurs in environment dominated by cold air advection
 - NW Flow Snow frequently (but not always!) occurs in environment lacking differential cyclonic vorticity advection

Be Alert!

- Jet streak or short wave trough approaching southern Appalachians in northwest flow can enhance precipitation (evident as a vorticity maximum at 500 mb)

Always keep in mind the vertical and horizontal accelerations that occur in the vicinity of jet streaks.



(Kocin and Uccellini, 1990)

Northwest Flow Snow Categories

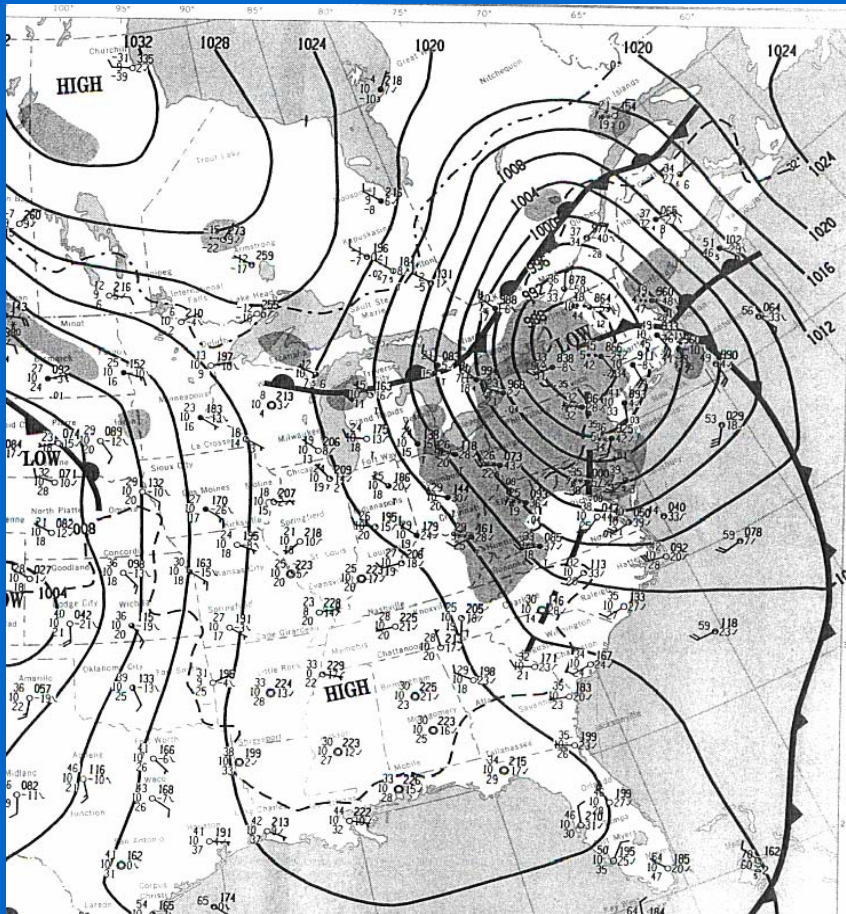
- **Type I** – Post Frontal
- **Type II** – Comma Head (“Wrap-Around”)
- **Type III** - Cut-Off Low

Type I – Post-Frontal

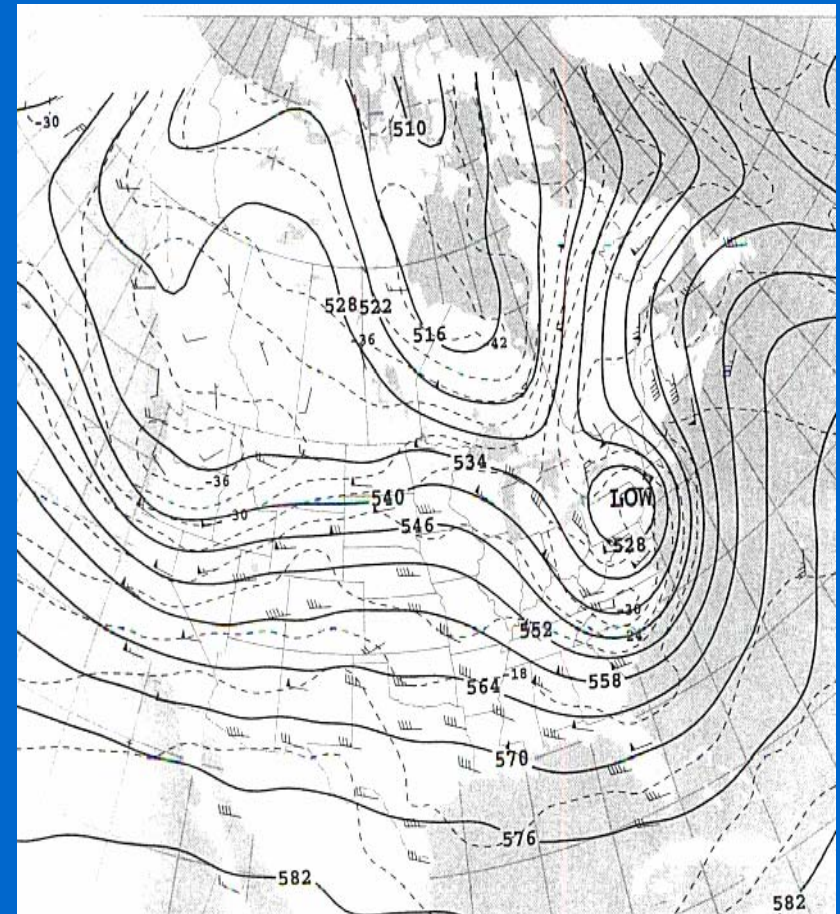
- Low-level wind is northwest (upslope)
- Deepening surface low moving northeast away from CWA
- Synoptic scale precipitation shield is over mid-Atlantic or northeastern states – not over southern Appalachians
- Can evolve from Type II

Post Frontal Event – 3-4 March 1999

Surface



500 mb



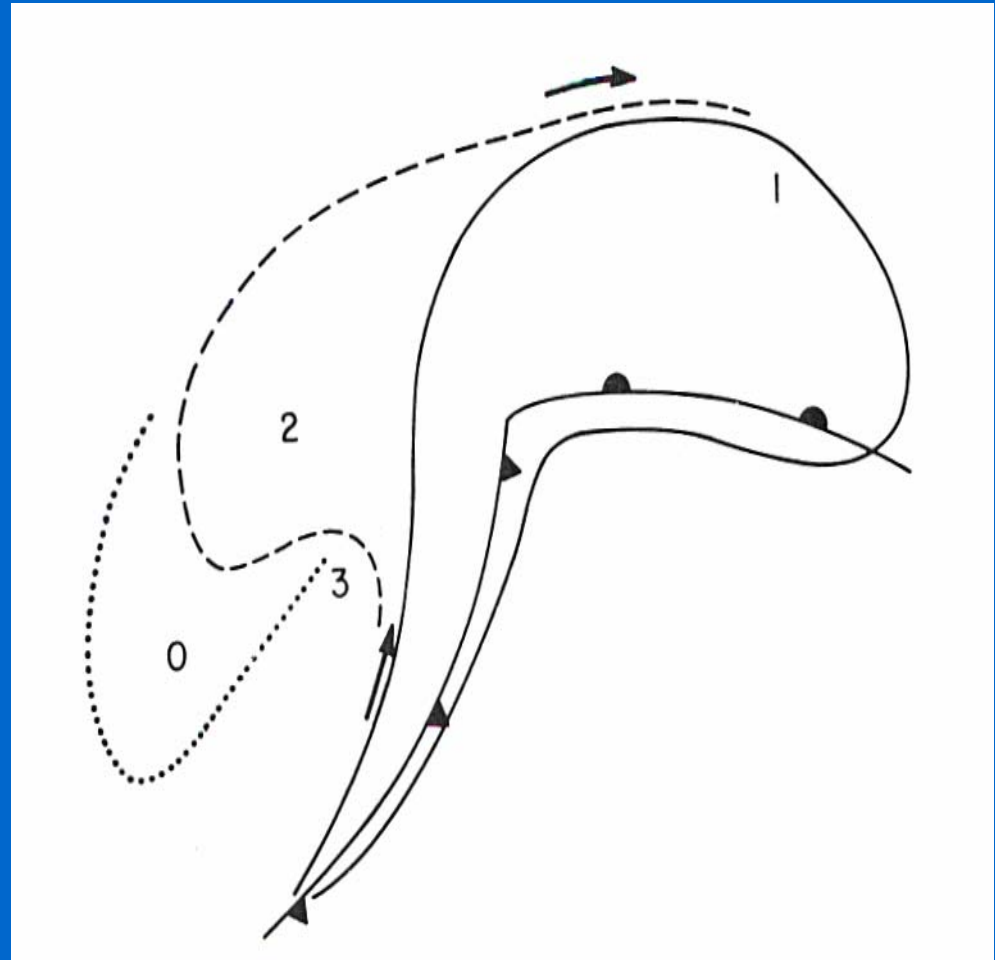
Type II – Comma Head - “Wrap Around” Moisture

- Low-level wind is northwest (upslope)
- Trailing edge of synoptic scale precipitation shield associated with departing extratropical cyclone is still over southern Appalachians
 - “Wrap-around” moisture
 - Related to cold conveyor belt ?
- More likely to have contribution from QG forcing
- Can evolve into Type I (Post-Frontal)

Comma-Shaped Cloud Shield

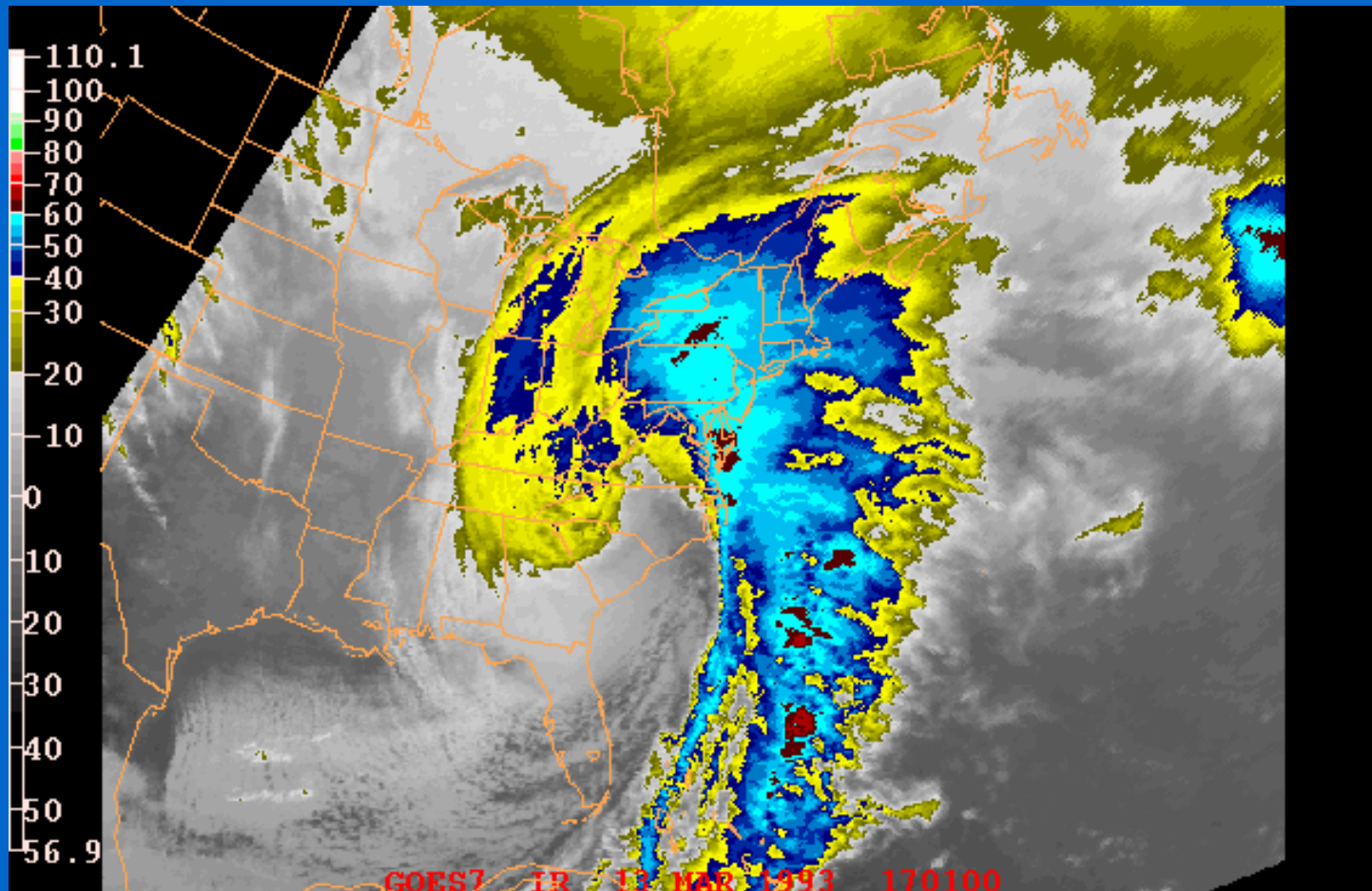
- 1 Dense middle- and upper-layer cloud
- 2 Westward extension of cloud canopy
- 3 Dry slot
- 0 Thin layer of stratiform cloud. This air enters the poleward side of the cyclone and is diverted equatorward west of the cyclone center.

(Bluestein 1993)



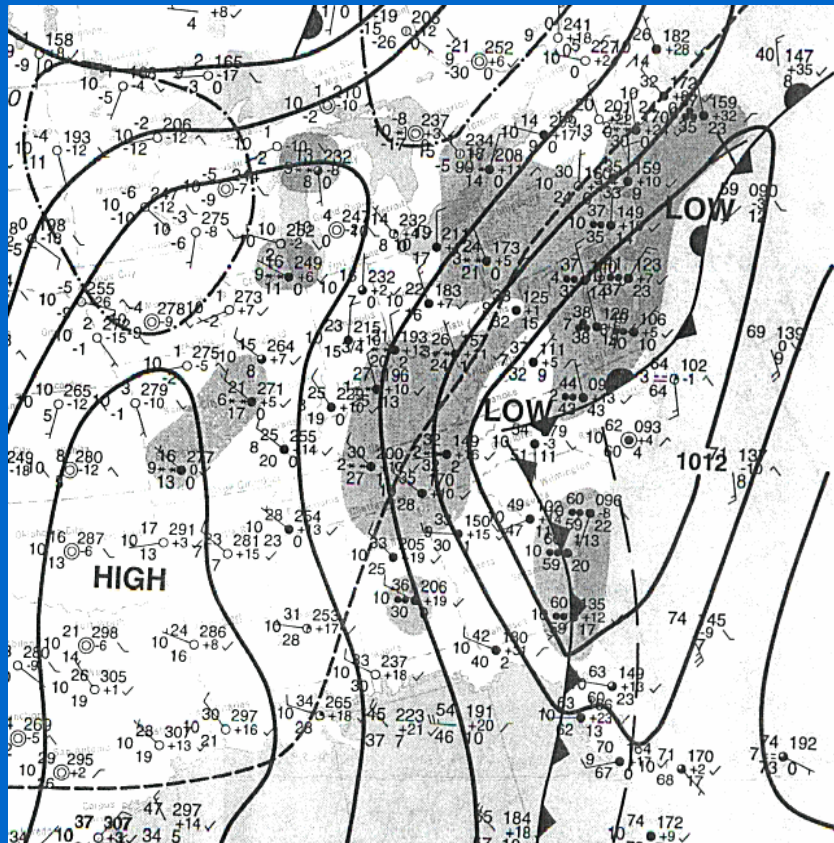
Storm of the Century

March 1993

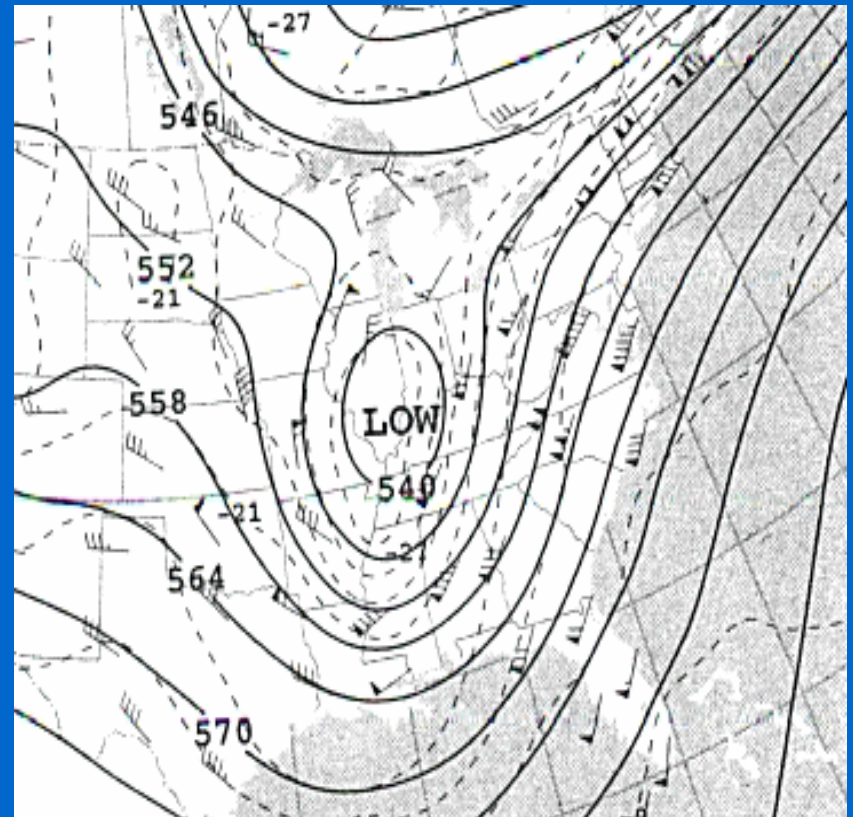


Comma Head (“Wrap-Around”) Event – 20 January 2001

Surface



500 mb



Type III – Cut-Off Low

- Not “pure” Northwest Flow snow event
 - Low-level winds across mountains are northwest
 - Snowfall enhanced significantly by synoptic scale forcing due to proximity of low
 - More complex processes involved in precipitation formation
 - Subtype of Type II ?

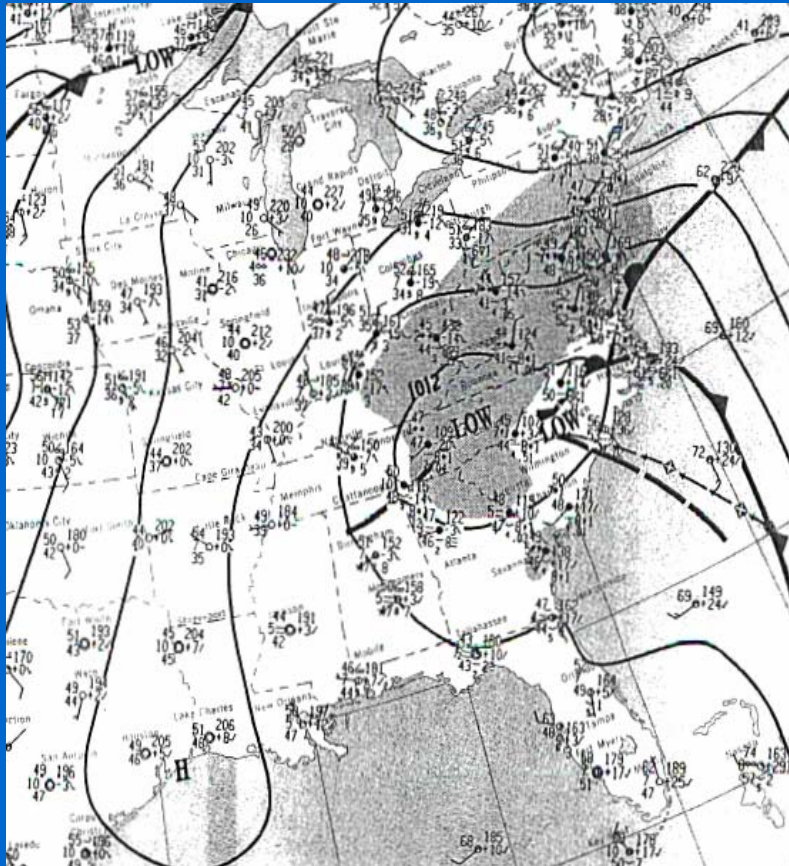
Type III – Cut-Off Low

(continued)

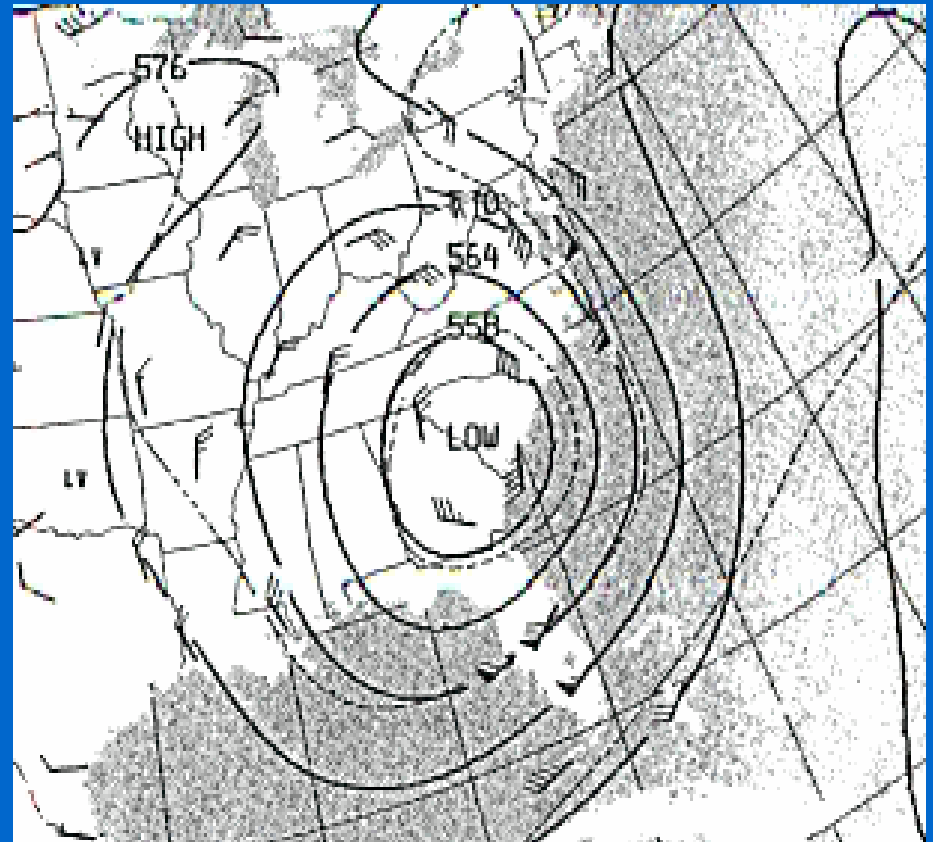
- Nearly stationary cut-off low just east or northeast of CWA
- Can produce long periods of moist, northwest flow
- Most common during late winter and spring

Cut-Off Low – 8 May 1992

Surface



500 mb



WINDEX

Wintertime INstability inDEX

- Probably most common in Type I (post-frontal) events
- A tool for anticipating significant snowfall during periods of an hour or less
- Associated with post-frontal events when surface trough or upper-level forcing is embedded in NW Flow
- Developed for instability snow squalls in New England (Lundstedt 1993)

WINDEX

- Rapid Lifted Index change to more stable
 - Indicative of air mass change rather than parcel stability
- 30° wind shift (veering)
- Increasing boundary layer wind speed
- Temperature difference at least 10° C from surface to 800 mb
- Layer Relative Humidity > 70%
- Can produce snow east of favored areas

Forecasting Tips

- Wind direction and speed of low-level flow
 - Favored direction is perpendicular to terrain
 - Generally NW, but local ridge orientation can result in modification
 - Large scale flow should be cyclonic
 - Not as many significant events in neutral flow
 - Speed in layer encountering mountains should be at least 20 kt

Forecasting Tips

- Moisture
 - “Deep” moisture not necessary
 - Frequently confined to 850 mb and below
 - Moisture above 850 mb indicates greater potential for precipitation
 - Examine moisture characteristics of air in Kentucky and East Tennessee to evaluate snow potential (use “point” soundings in AWIPS and hourly TRI and TYS profiles in BUFKIT)

A Few More Moisture Clues

- Surface dew point depressions $< 10^{\circ}\text{C}$
- Mixing ratio $\lesssim 2 \text{ g kg}^{-1}$ indicates potential for accumulating snow
- Model 850 mb “Moisture Transport Vector” provides guidance on areas most susceptible to precipitation
- Flurries predominate with shallow mean RH and 850 mb temperatures of -2°C to -6°C

...and more

- Onset of snow often with 850 mb RH > 70%
- Ending of snow often with departure of 1000-850 mb mean RH of 70%
- Bands of clouds from Great Lakes sometimes provide moisture source (at least in RNK CWA)

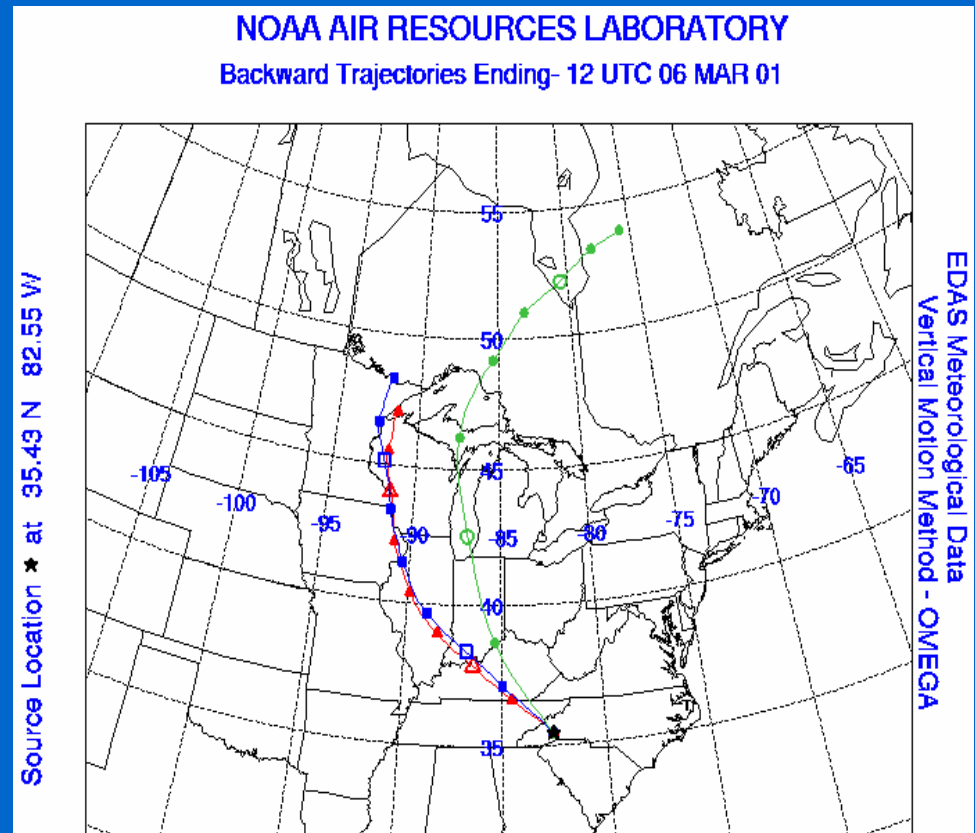
Forecasting Tips:

Temperature Considerations

- Frequently observed that 850 mb temperatures are at least -12°C for a significant event (not the case 17 Apr 2001)
- Unstable lapse rates promote precipitation
 - Contributes to shallow convection
 - Lapse rates in layers below 700 mb during 17 Apr 2001 event were approximately 9°C per km

Great Lakes Influence Maybe ?

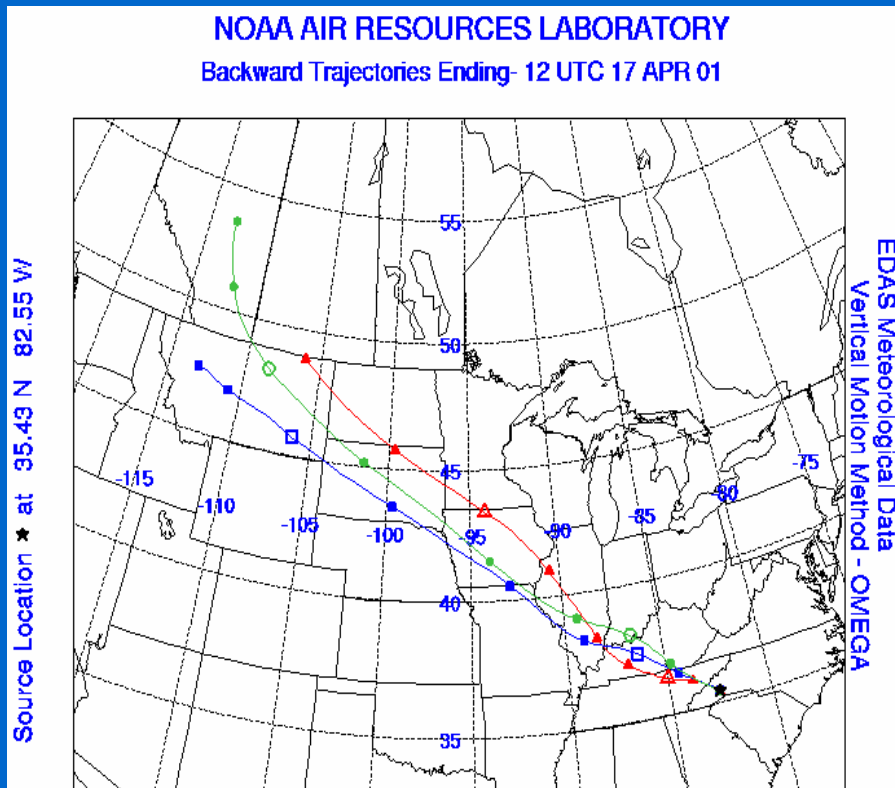
- Air flow from Great Lakes region does sometimes occur during Northwest Flow Snow events
- 6 March 2001



Great Lakes Influence

Maybe Not!

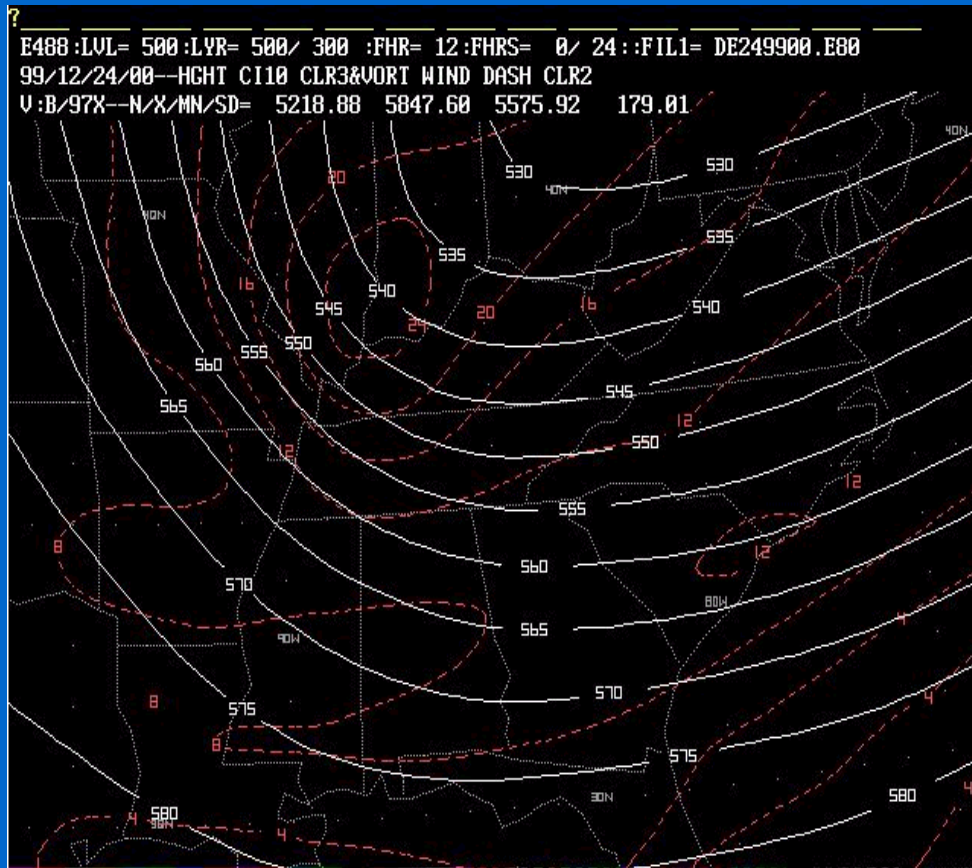
- Air flow from the Great Lakes region is not required for significant NW Flow snow
- 17 April 2001



What's Upwind?

- Large field of stratus and stratocumulus (especially with snow showers and snow flurries) across KY and TN indicates sufficient moisture for Northwest Flow snow in southern Appalachians
- Most favorable cloud coverage exists when stratus/stratocumulus extend into northern MS, northern AL, and northwest GA
- Vorticity Maximum?

Vorticity Maximum



- Post frontal snow enhanced when short wave trough or wind maximum in NW flow approaches mountains (appears as vort max)
- When accompanied by colder cloud tops, snowfall rates can be significant for short periods of time (WINDEX)

Cloud and Precipitation Physics

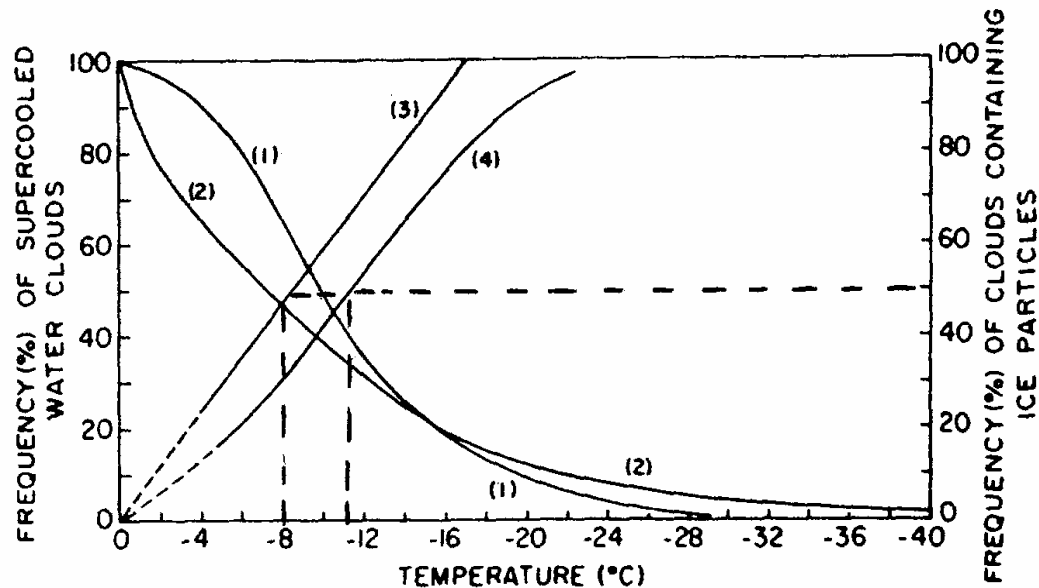


Fig. 2-1. Variation of the frequency of supercooled clouds and of clouds containing ice crystals. Curves 1 and 2 pertain to ordinate at left. Curves 3 and 4 pertain to ordinate at right. (1) Peppler (1940), Germany, all water clouds; (2) Borovikov *et al.* (1963) ETU, all water clouds; (3) Mossop *et al.* (1970), Tasmania, mixed clouds; (4) Morris and Braham (1968), Minnesota, mixed clouds.

(Pruppacher and Klett, 1980)

Cloud and Precipitation Physics

Probability of Ice in Cloud as a Function of Temperature

-4°C	No Ice
-10°C	60% Chance Ice Exists
-12°C	70% Chance Ice Exists
-15°C	90% Chance Ice Exists
-20°C	Near 100% Chance Ice Exists

(Baumgardt 2000)

Cloud and Precipitation Physics

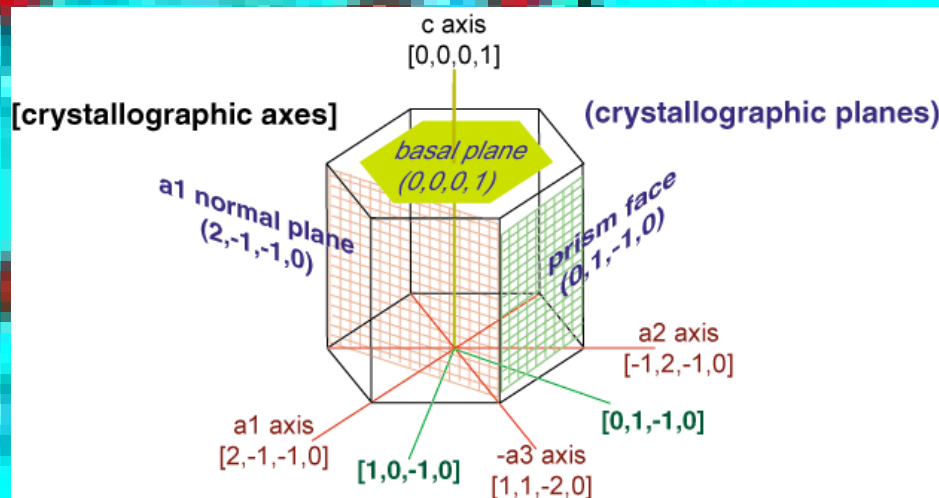
- Clouds should extend to -15°C (\times 2 or 3 degrees) for most efficient generation of snowflakes (refer to Nakaya diagram)
 - Optimum production of dendritic snow crystals
 - Optimum diffusive growth rates of ice
 - Nakaya IR enhancement curve in GSP AWIPS

Image: Jerzy Rutkowski (jerzyrut@uni.lodz.pl)

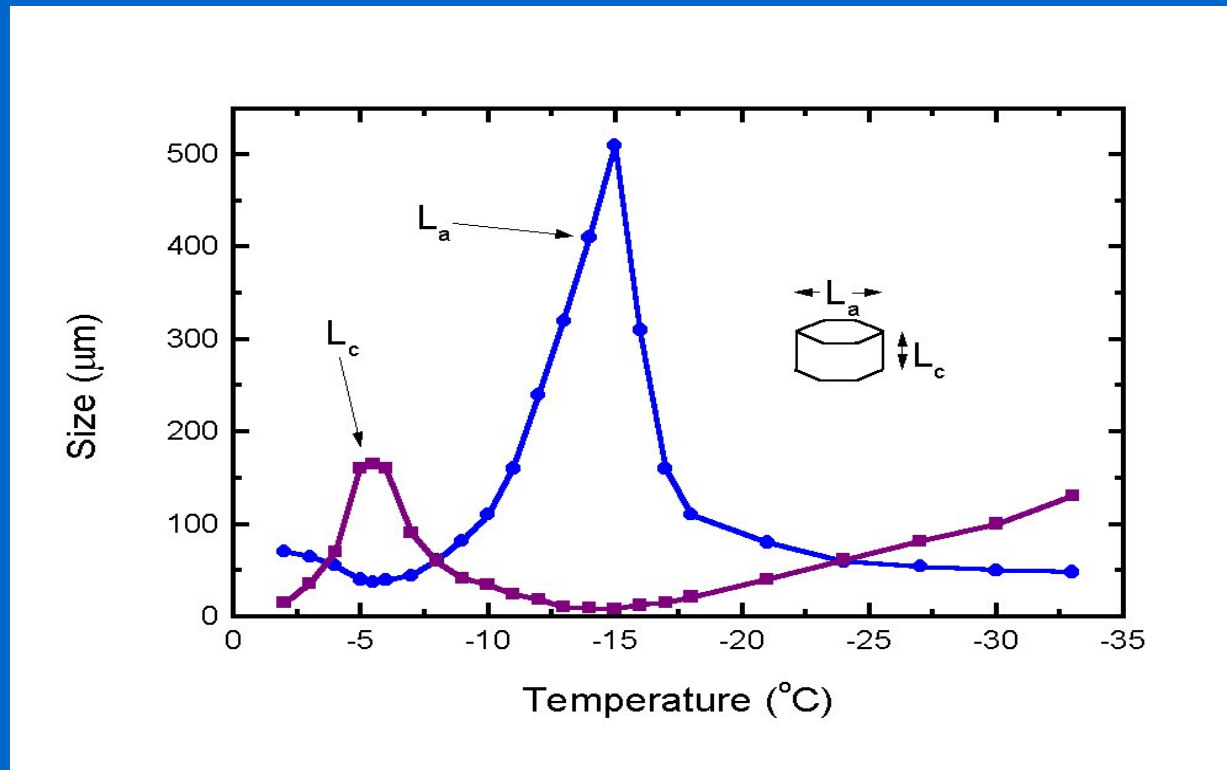


Why Dendrites at -15°C ?

Most common form of ice crystal is the hexagonal prism.



Crystal Faces Grow at Different Rates Depending on Temperature



Near -15°C , growth rate of L_a is at a maximum while growth rate of L_b is at a minimum. Result – Hexagonal Plate, but ...

Plates Quickly Evolve Into Dendritic Crystals Because of

*** Mullins – Sekerka Instability ***

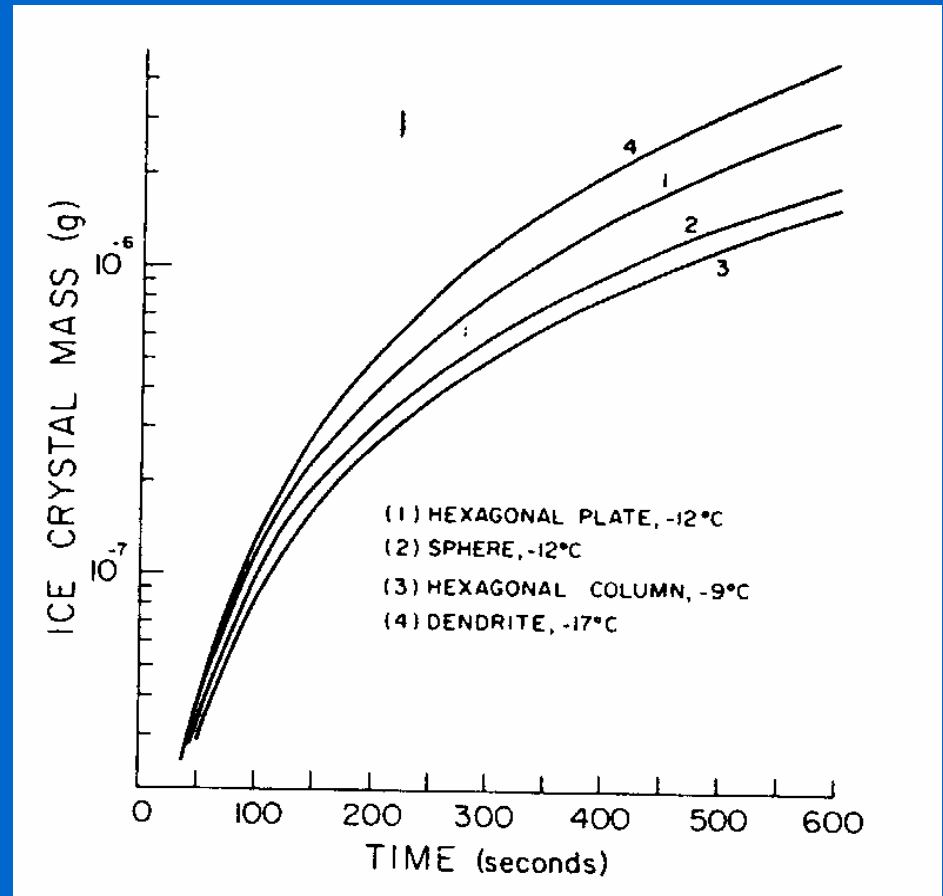


As the crystal grows larger, the corners grow most rapidly by diffusion resulting in six arms. As the arms grow, their edges grow rapidly. ... and so on and so on. This produces the dendritic, or tree-like, pattern.

Growth Rate of Ice Crystals by Diffusion

Differences in growth rates are initially small.

Dendrites quickly assume greater mass than other crystal types.

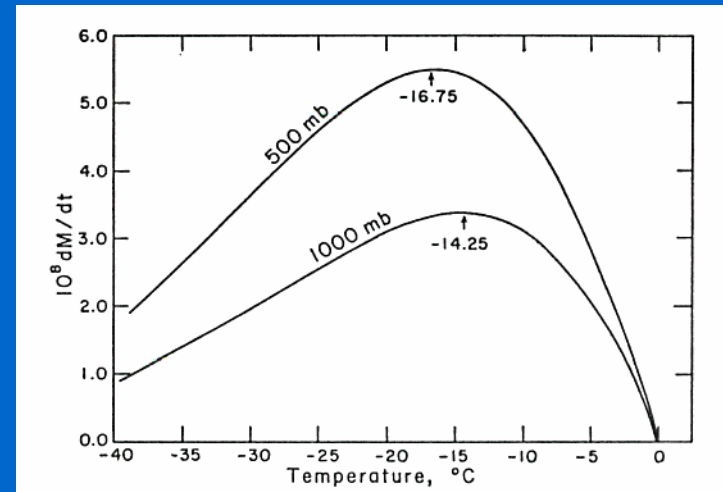
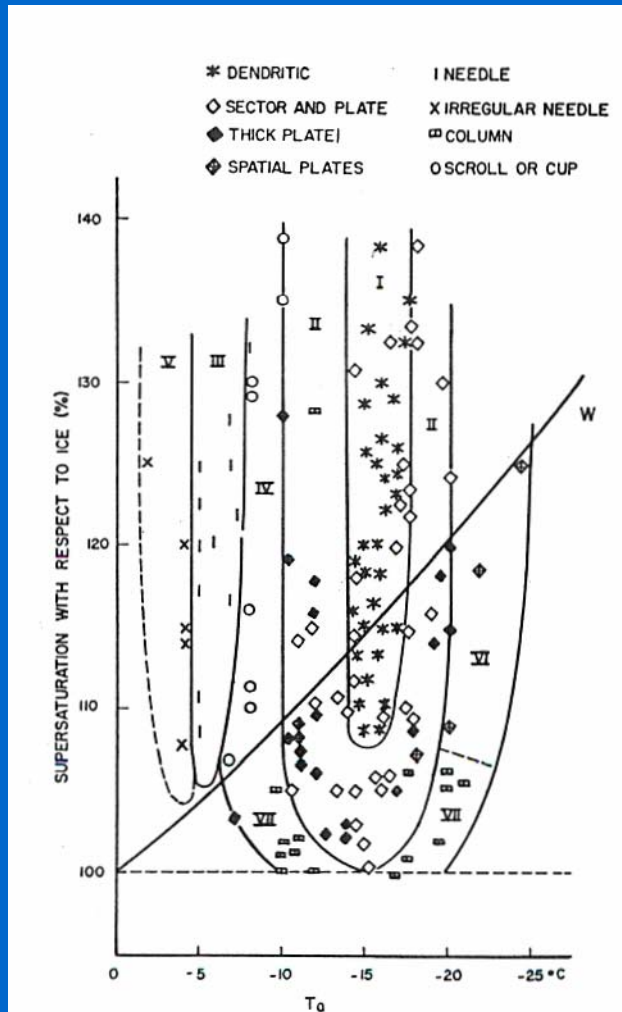


(Pruppacher and Klett, 1980)

Nakaya Diagram

and

Growth Rates of Ice Crystals



Growth rates as a function of temperature for ice crystal in water-saturated cloud at 1000 mb and 500 mb. Temperatures of maximum growth rate are indicated.

⇐ Nakaya Diagram

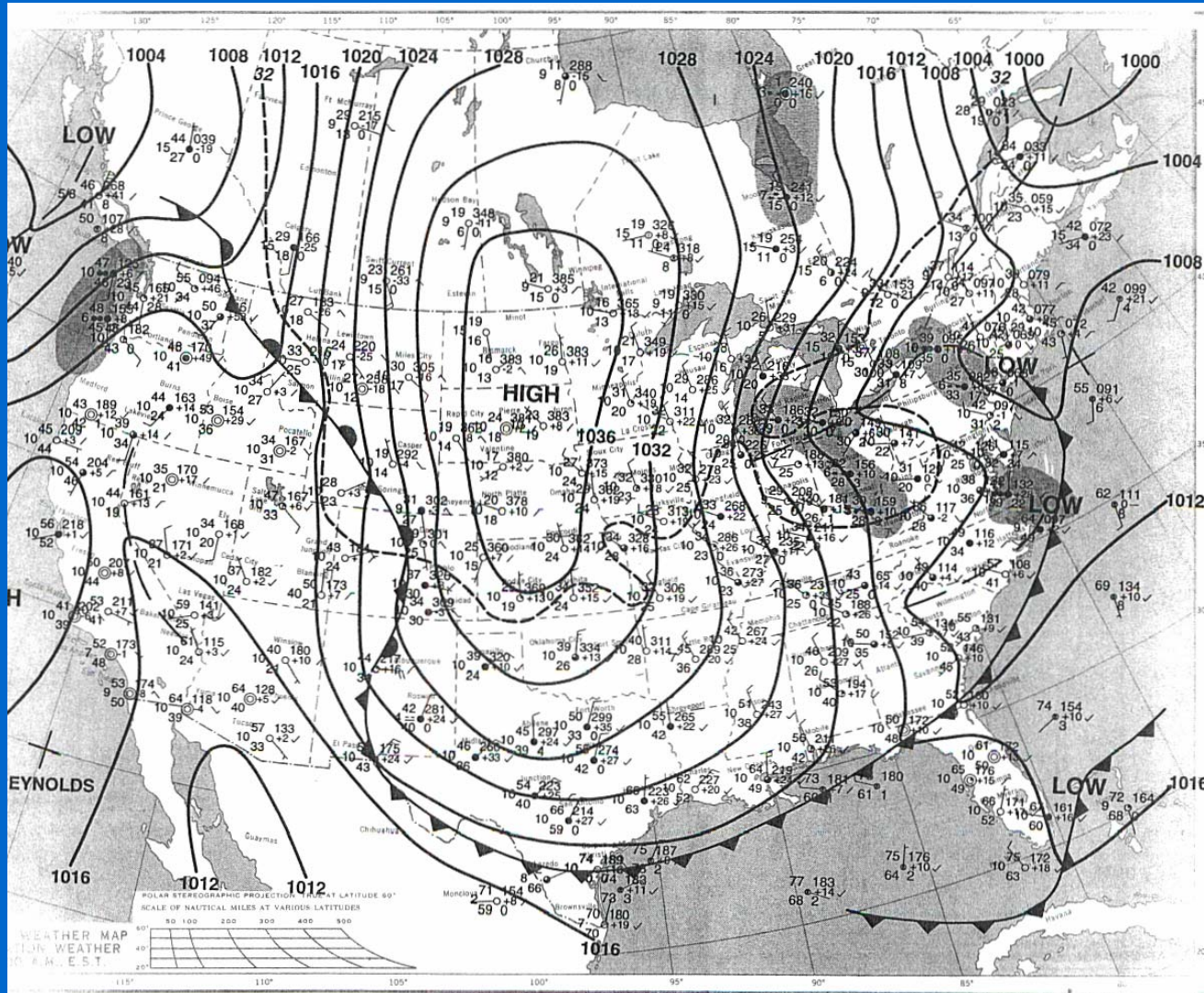
(Byers 1965)

Event Review

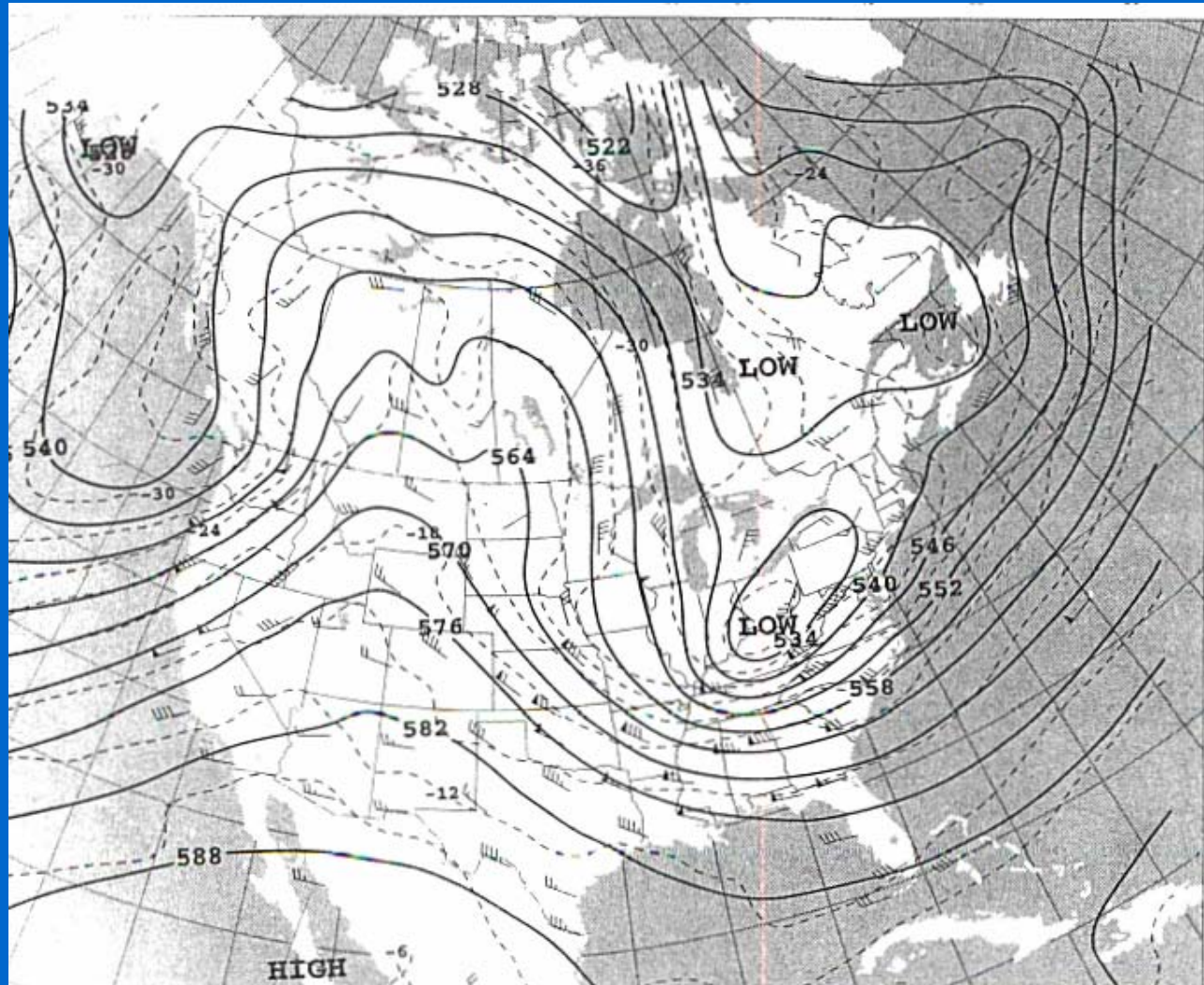
17 April 2001

- Post-frontal Event
 - Cold front offshore
 - Upper-level trough
 - 2” – 4” inches of snow in parts of mountains
 - Snow flurries and snow showers in foothills and Piedmont

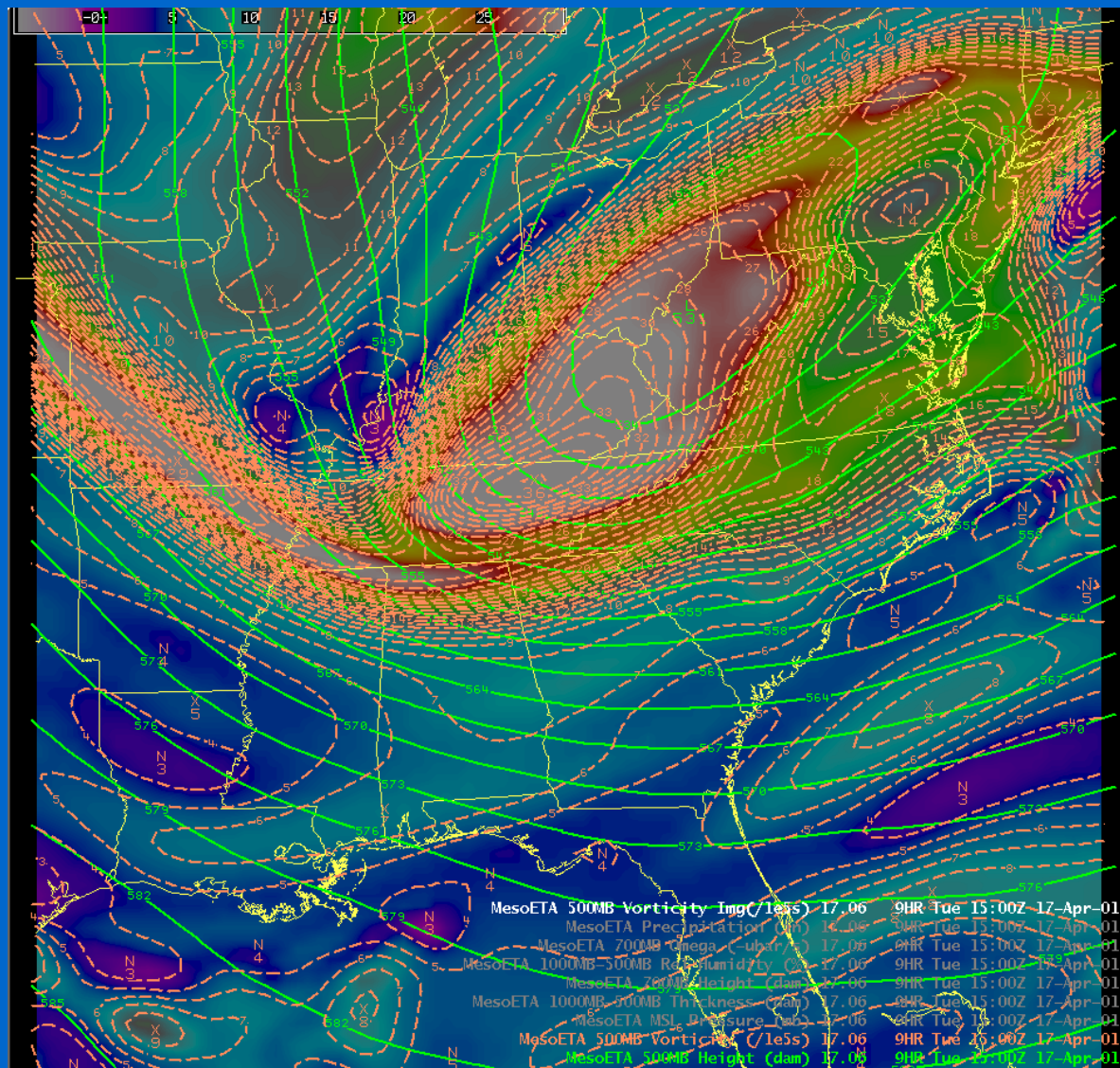
Surface Analysis – 12Z



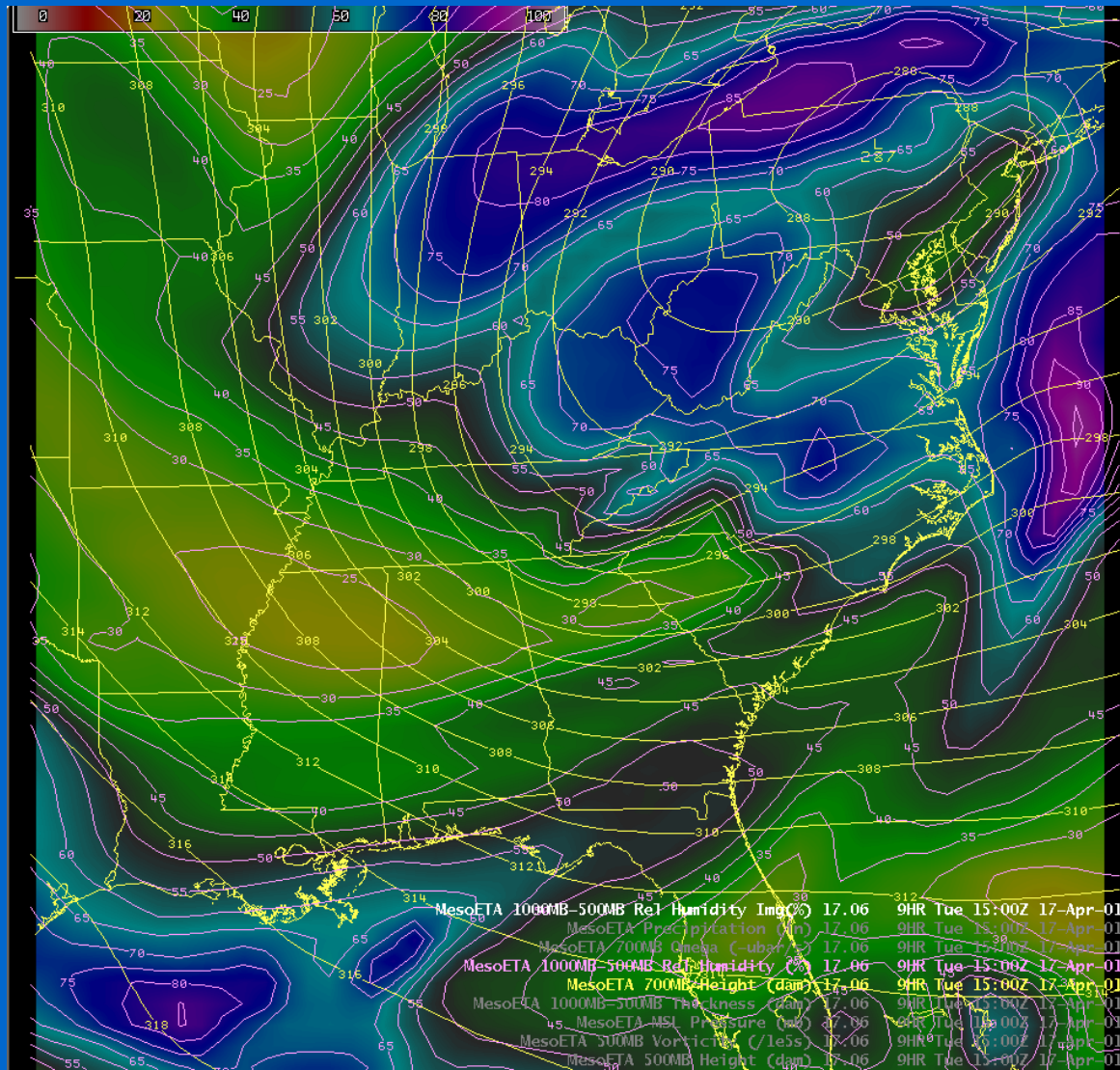
500 mb Analysis – 12Z



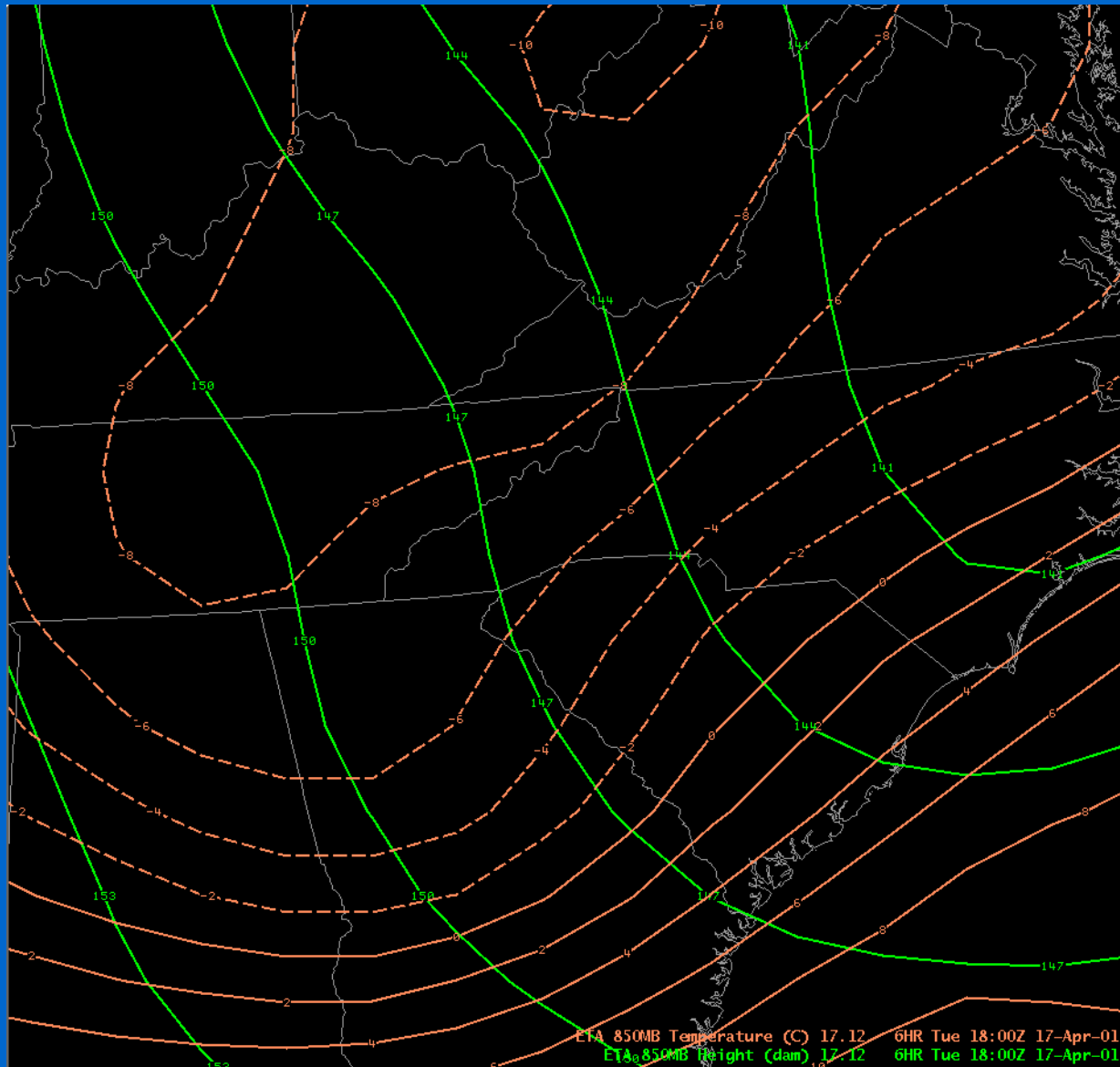
500 mb – 15Z



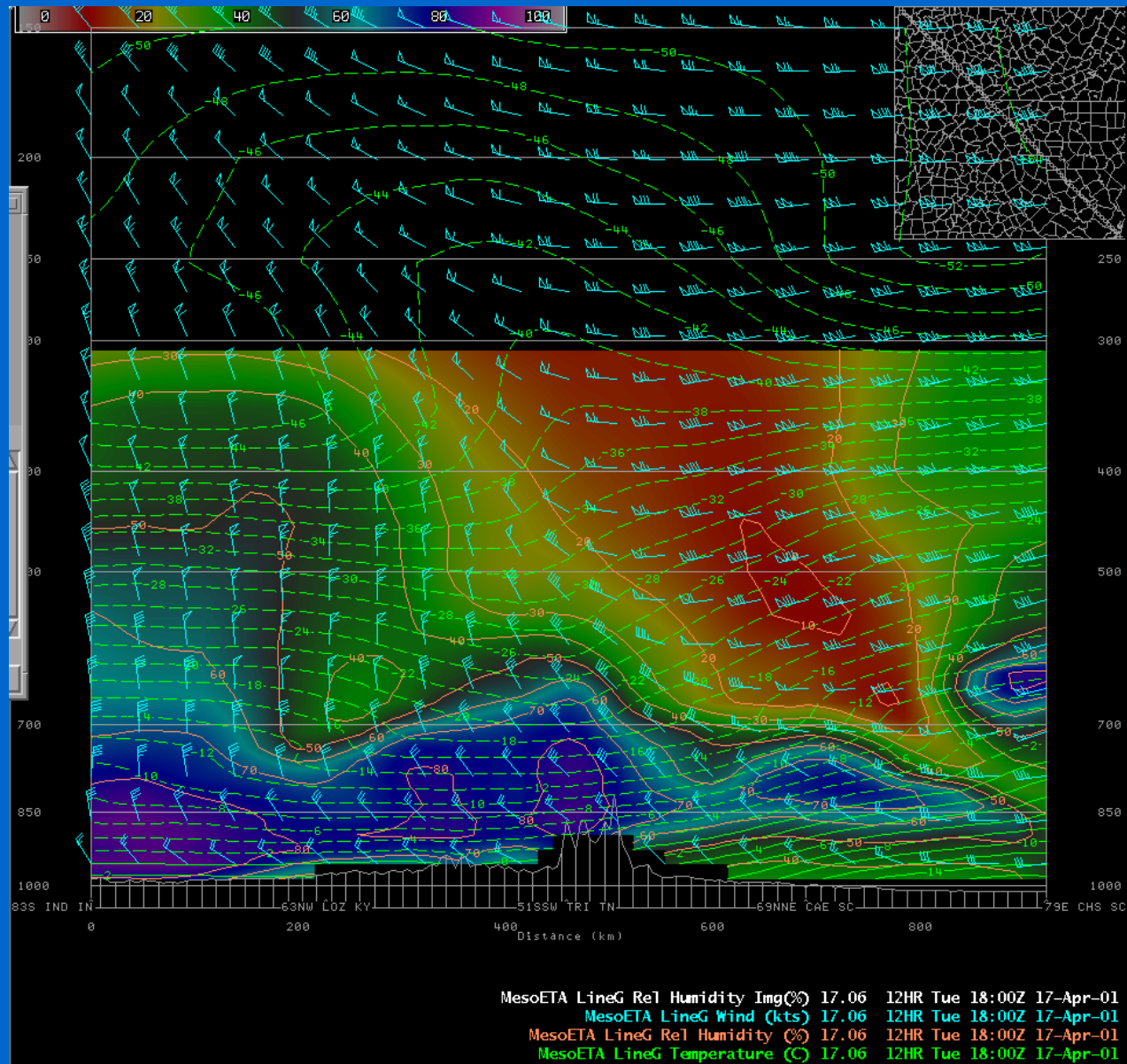
700 mb – 15Z



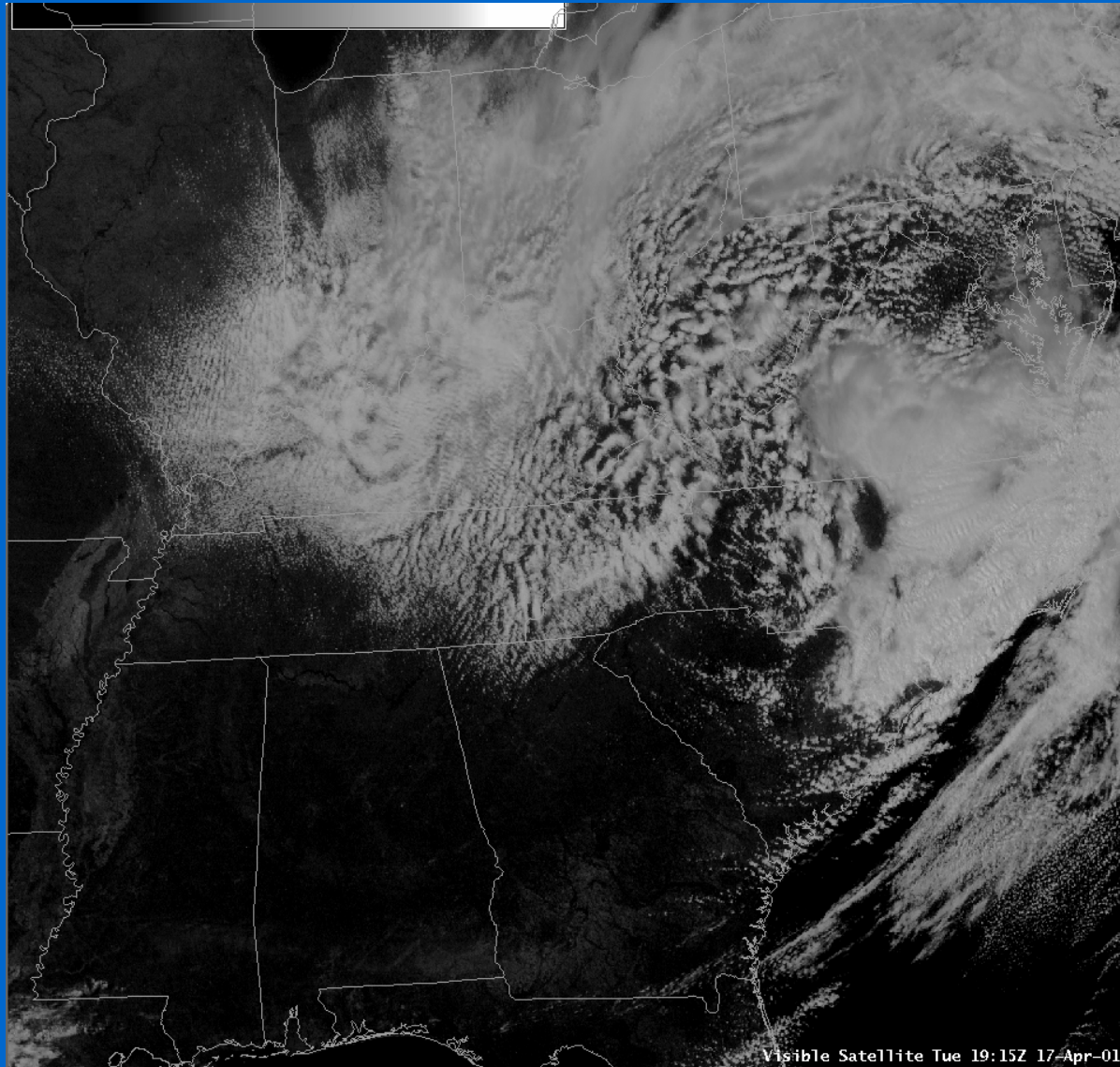
850 mb – 12Z



NW-SE Cross Section – 18Z



Visible Satellite Imagery – 1915Z



IR Satellite Imagery (Nakaya Curve) – 1545Z

Light Blue..... 0.0°C

Darker Blue... -10.0°C

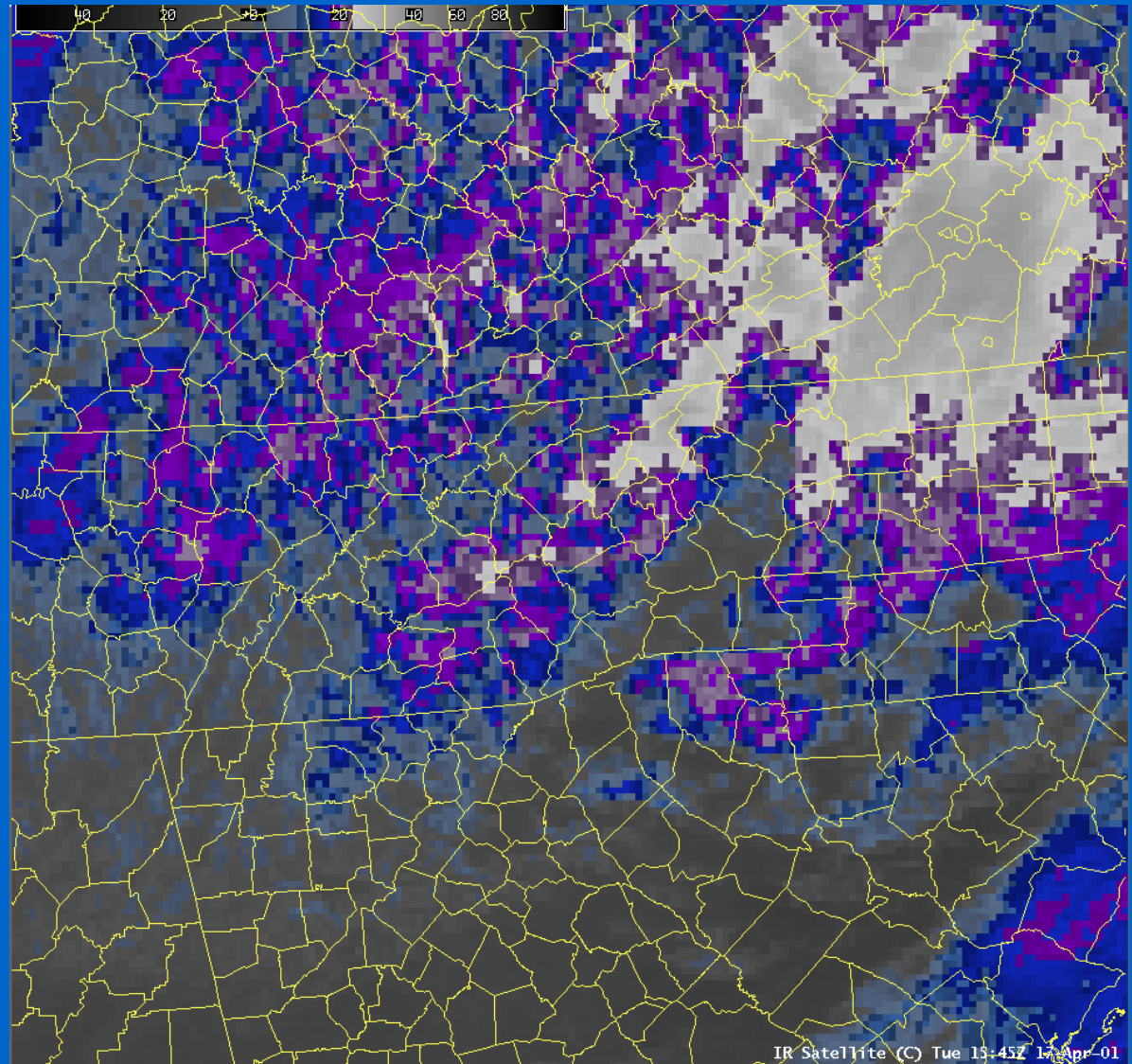
Dark Blue..... -13.0°C

Purple..... -17.5°C

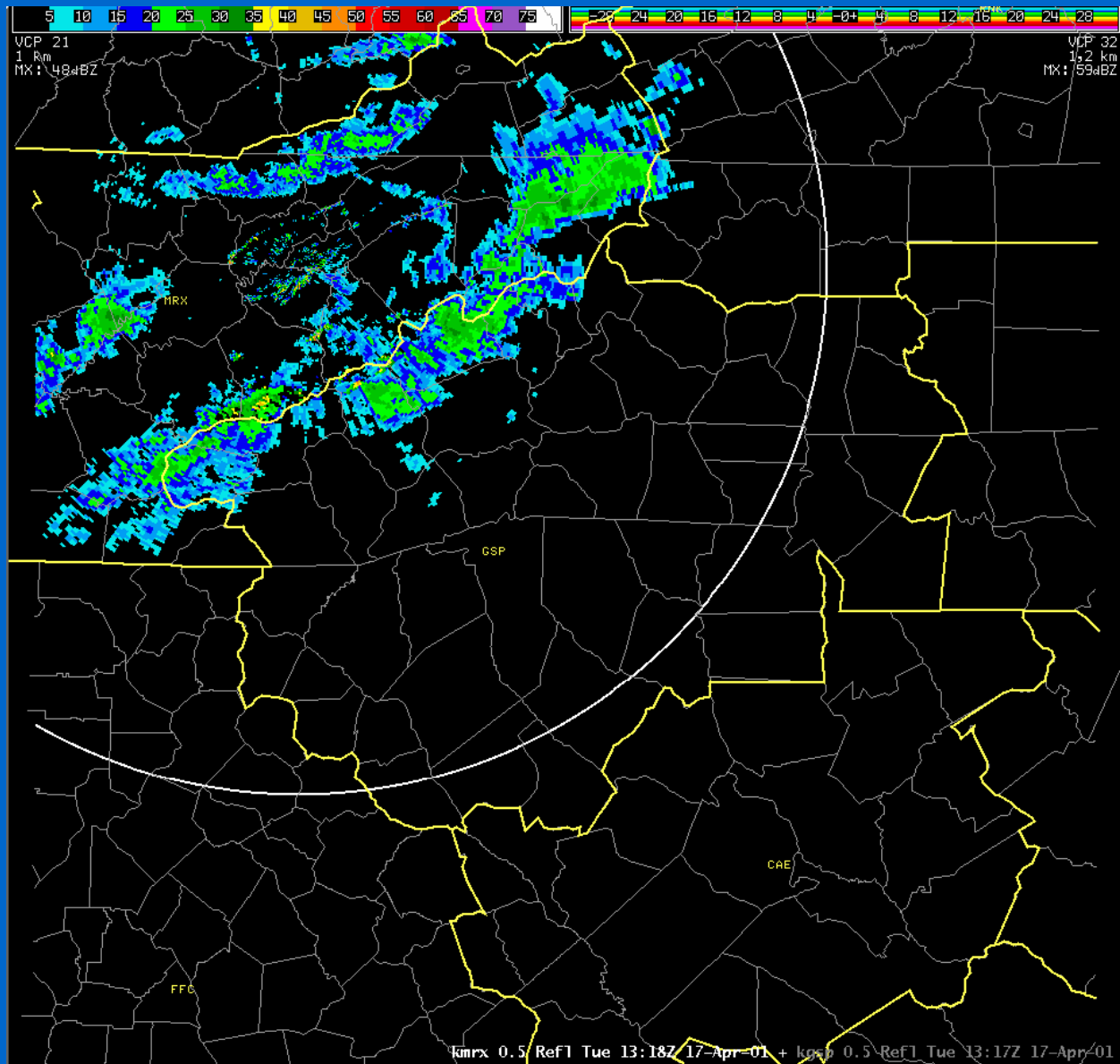
Light Purple.... -20.0°C

Light Gray.....-23.0°C

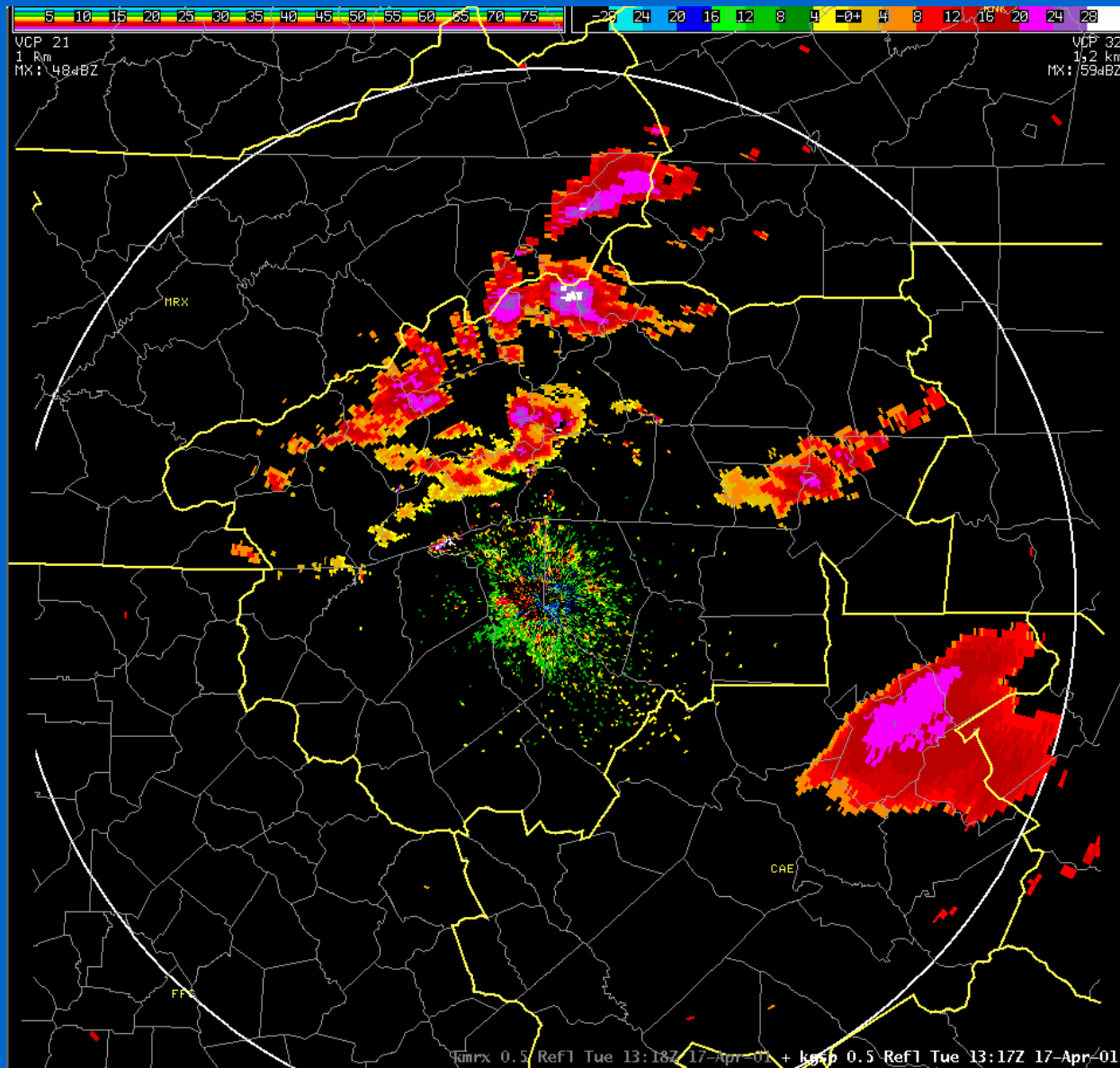
Dark Blue
Highlights
temperatures within
 $\pm 2^{\circ}\text{C}$ of -15°C



KMRX – 1318Z

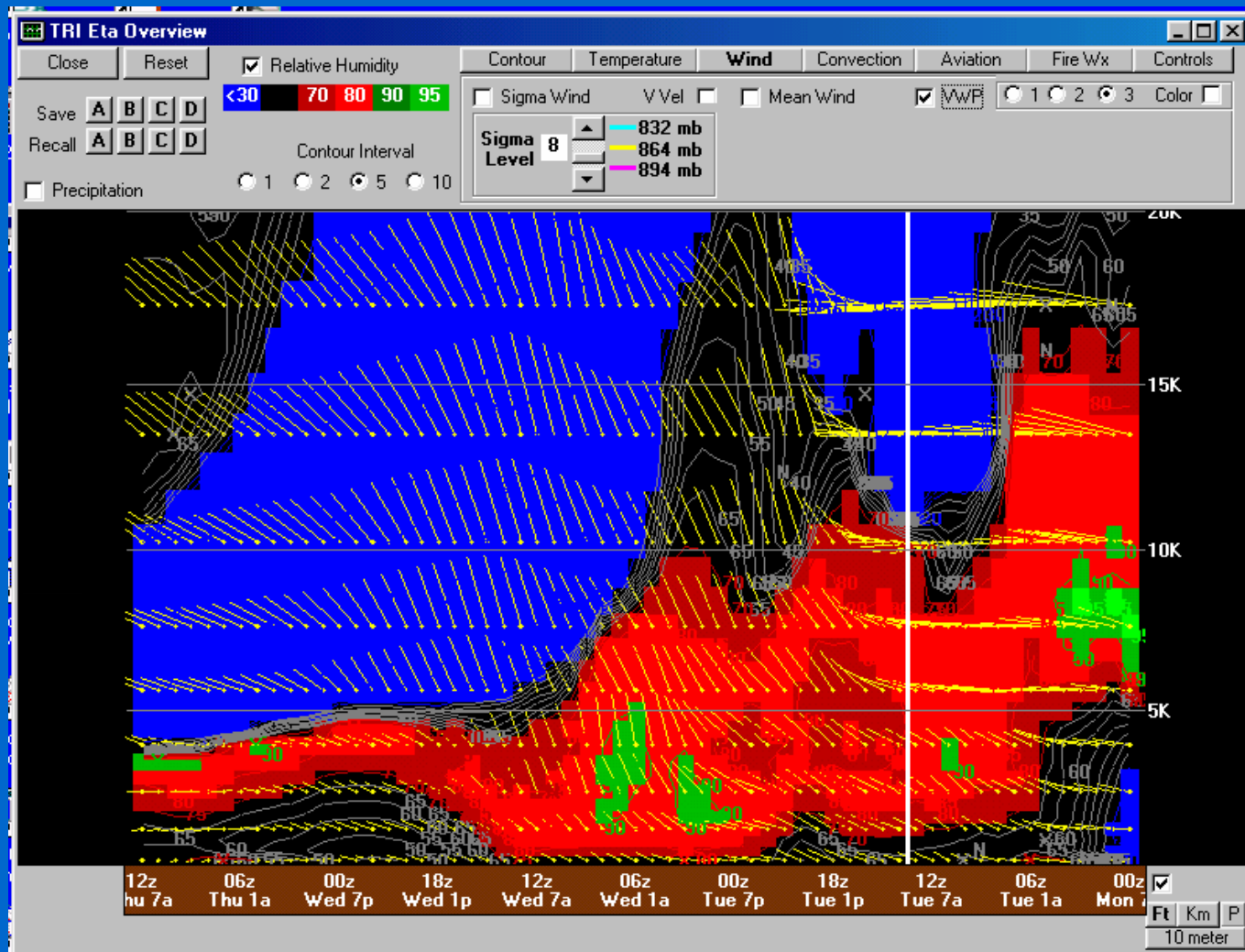


KGSP – 1317Z



TRI Overview (Meso Eta Model)

17 April 2001



Items Worth Noting

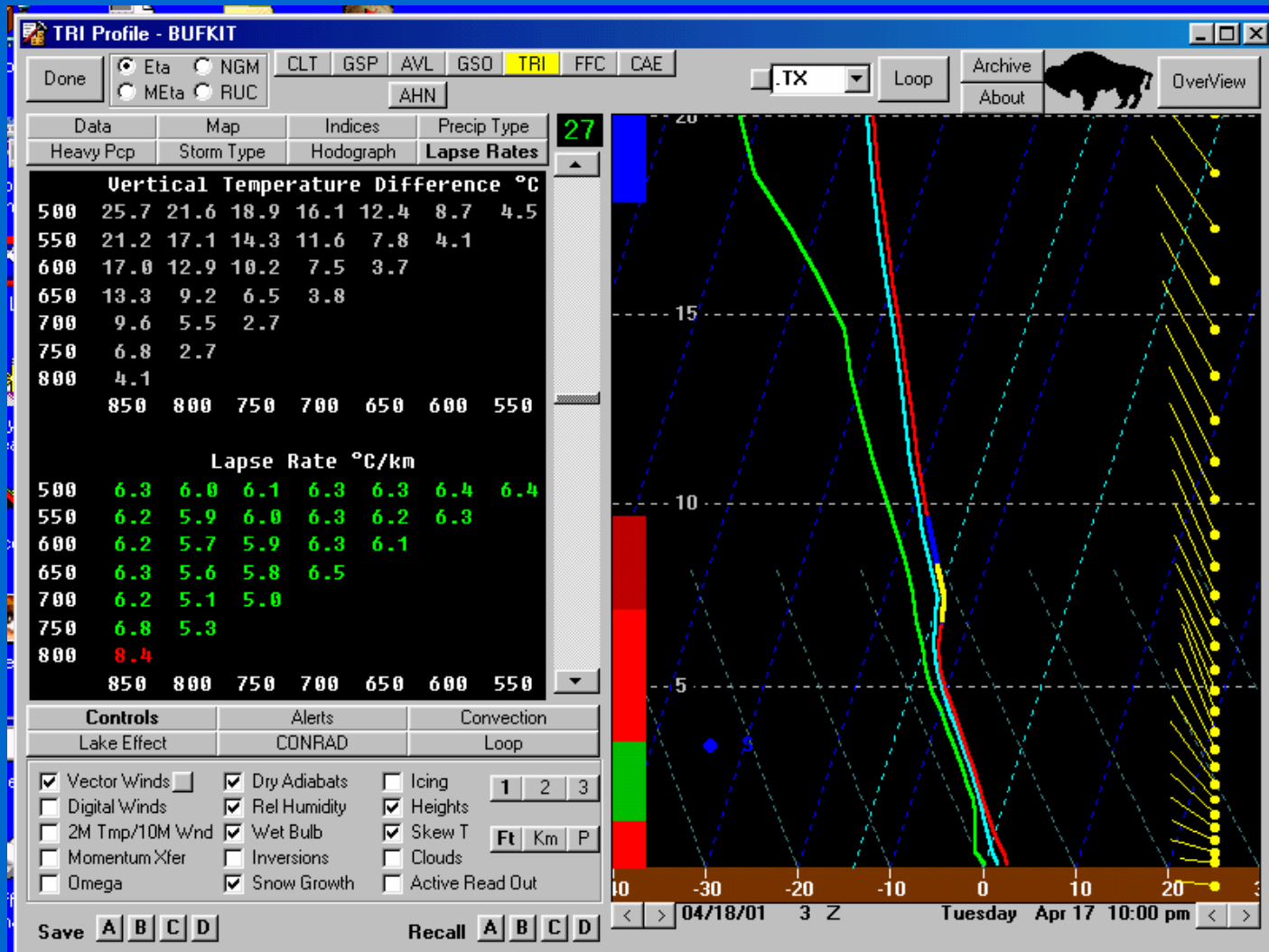
TRI – 17 April 2001

- Overview – Time Section
 - Deep moisture in this case ($> 70\%$ RH as high as 10 – 15 K ft)
 - Periods during which mean RH $> 90\%$ existed in some layers
 - Snow was occurring before winds aloft shifted to NW

Remember: TRI is a desirable site to examine because the data are good indicators of moisture, wind, and temperature characteristics of the air mass that will be lifted over the mountains.

Vertical Temperature and Moisture Profiles at TRI

1200 UTC – 17 April 2001

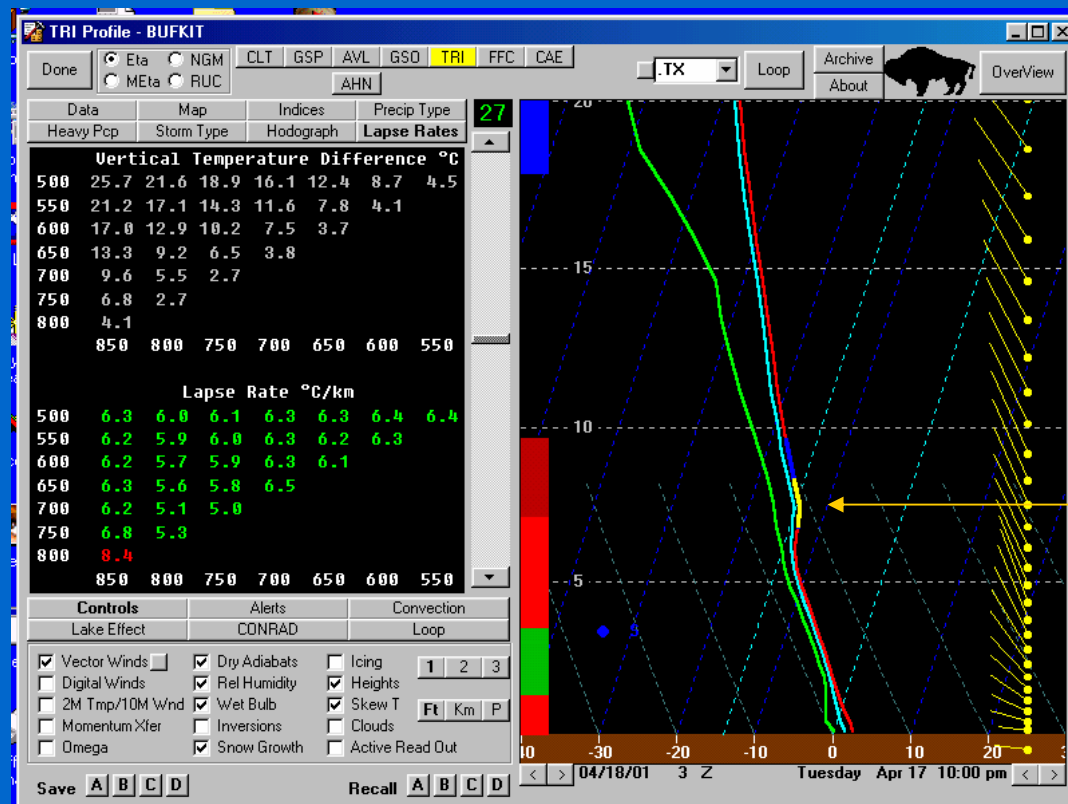


Items Worth Noting

TRI – 1200 UTC - 17 Apr 2001

- Vertical Temperature and Moisture Profiles
 - Favorable temperature for snowflake formation near top of moist layer (Check “Overview” display)
 - Steep lapse rate in lower troposphere

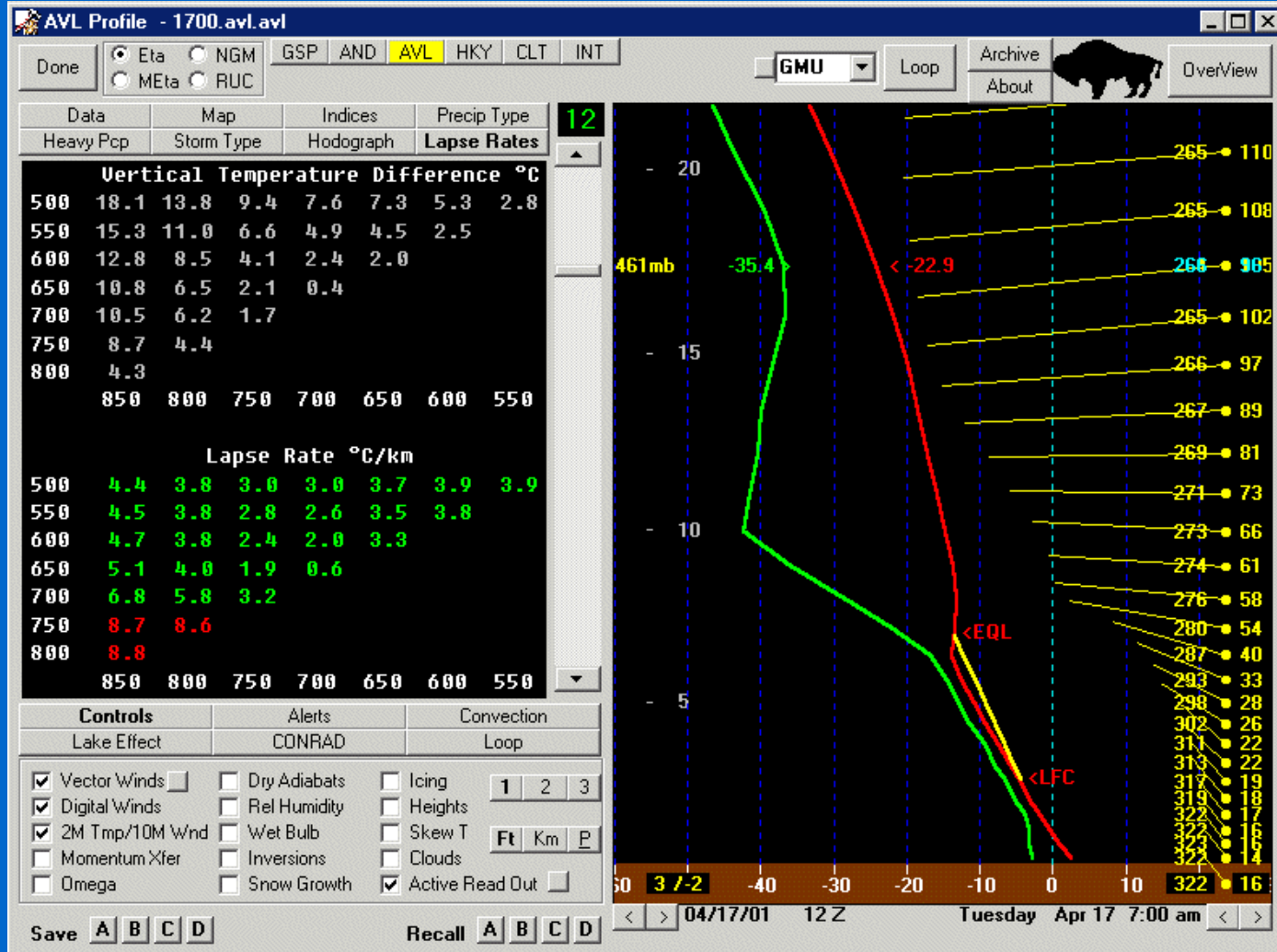
Lapse Rates



Temperatures for snowflake growth

Temperature and Moisture Profiles at Asheville

Meso Eta Model 12-hr Forecast – VT 12Z



Asheville Weather

SPECI KAVL 171640Z 36020G26KT 1 1/4SM -SN FEW013 SCT026 BKN034 02/M02
A2999 RMK AO2 PK WND 01026/1638 RAB1557E19B36E40SNB19 P0000

SPECI KAVL 171644Z 36018G26KT 310V010 1/2SM FG FEW008 BKN017 BKN034
00/M01 A2999 RMK AO2 PK WND 01026/1638
RAB1557E19B36E40SNB19SNEMM P0000 \$

METAR KAVL 171654Z 32014G25KT 300V360 3/4SM -SN BR BKN013 BKN033 01/00
A2999 RMK AO2 PK WND 01026/1638 RAB1557E19B36E40SNB19 SLP156
P0000 T00110000 \$

SPECI KAVL 171657Z 31018G21KT 290V360 1 1/2SM -SN BR BKN013 BKN033 02/00
A2999 RMK AO2 P0000 \$

SPECI KAVL 171659Z 31018G21KT 3SM -SN BR FEW010 BKN013 OVC049 02/00
A2999 RMK AO2 P0000 \$

SPECI KAVL 171706Z 32017G25KT 290V360 9SM -RA FEW010 BKN019 BKN035
03/M01 A2999 RMK AO2 RAB05SNE05 P0000 \$

SPECI KAVL 171723Z 34020G28KT 8SM -SN BKN025 BKN038 BKN048 03/M03 A3000
RMK AO2 PK WND 32028/1715 WSHFT 1703 RAB05E11 P0000 \$

SPECI KAVL 171736Z 30020G29KT 280V010 10SM SCT023 SCT046 04/M06 A3000
RMK AO2 PK WND 30029/1729 WSHFT 1703 RAB05E36SNE25 P0000 \$

METAR KAVL 171754Z 36020G29KT 3SM -RA SCT028 BKN043 03/M06 A3002 RMK AO2
PK WND 31029/1749 WSHFT 1703 RAB05SNE25 SLP164 P0000 60002
T00331056 10044 20000 53017

Northwest Flow Snow Summary

- Snow in southern Appalachians produced – or augmented – by upslope flow
- Usually following passage of cold front or low pressure system
- Highly variable accumulations
- Most common in Tennessee border counties
- Occurs during periods of cold air advection

Northwest Flow Summary

- Relatively shallow moist layer
 - Frequently 850 mb and below
 - Extensive cumulus/stratocumulus west of mountains (with flurries and snow showers)
- “Snow Growth” temperatures required in-cloud
- For significant NFS events... Do snow growth temperatures, high RH, and omega maximum coincide? (Waldstreicher 2001)
 - Not really investigated yet. Perhaps there is a unique, shallow “cross hair” signature in which the omega maximum is terrain-induced.

References

(Page 1)

Baumgardt, D., 2000: Wintertime microphysics review. Local Training Module, NWS La Crosse, WI., 40 pp.

Bluestein, H.B., 1993: *Synoptic-Dynamic Meteorology in Midlatitudes: Volume II – Observations and Theory of Weather Systems*. Oxford University Press, 594 pp.

Byers, H.R., 1965: *Elements of Cloud Physics*. The University of Chicago Press, 191 pp.

Kocin, P.J., and L.W. Uccellini, 1990: *Snowstorms Along the Northeastern Coast of the United States: 1955 to 1985*. *Meteor. Monogr.*, **22**, No. 44, 280 pp.

Libbrecht, K.G., 1999: SnowCrystals.com
(<http://www.its.caltech.edu/~atomic/snowcrystals/>)

References

(page 2)

Lundstedt, W., 1993: A method to forecast wintertime instability and non-lake effect snow squalls across northern New England. *Eastern Region Technical Attachment*, No. 93-11A, National Weather Service, NOAA, U.S. Department of Commerce, 13 pp.

Pruppacher, H.R., and Klett, J.D., 1980: *Microphysics of Clouds and Precipitation*. D. Reidel Publishing Company, 714 pp.

Waldstreicher, J.W., 2001: *The Importance of Snow Microphysics for Large Snowfalls*. <http://www.werh.noaa.gov/ssd/snowmicro/snowmicro.html>

Acknowledgement

Staffs at
NWS Greenville-Spartanburg
and
NWS Blacksburg

The End

