

The National Weather Service Online

Brought to you by the National Weather Service in Wichita, KS

www.weather.gov/wichita



All of your favorite Weather Information Online!

You can find all of your favorite National Weather Service products on our webpage. The latest current conditions, forecasts, satellite imagery, radar loops, and all hazardous weather information is just a click away. In addition to the current and forecasted products, there is also a wealth of information available on the bar on left of page (see image below). This information includes current hazards, current observations, radar imagery, forecast, river forecasts, climate data (historical data as well) and weather safety information. Also see the current and archived weather stories detailing a past event on our webpage (top news of the day).

The NWS Wichita homepage (below, www.weather.gov/wichita), features a map of the forecast area as well as the latest conditions at the Wichita Mid-Continent Airport. If any hazardous weather is forecasted and advisories, watches or warnings are issued a color code will be used to specify which counties are being effected. Use your mouse to point and click on a county or city, and you will receive a 7-day forecast (right) as well as the current conditions at the nearest reporting site. If there is any hazardous weather, short term forecasts, or severe watches or warnings the text product will be highlighted in red (see hazardous weather outlook on right).

Your National Weather Service forecast
Wichita KS
Enter Your "City, ST" or zip code [Go]

NWS Wichita KS
Point Forecast: Wichita KS
37.67N 97.31W
Forecast Valid: 3pm CST Jan 3, 2009-6pm CST Jan 9, 2009
Last Update: 12:39 pm CST Jan 3, 2009
En Español

Forecast at a Glance

This Afternoon	Tonight	Sunday	Sunday Night	Monday	Monday Night	Tuesday	Tuesday Night	Wednesday
Breezy	Blustery	Blustery	Mostly Cloudy	Partly Sunny	Mostly Cloudy	Partly Sunny	Partly Cloudy	Mostly Sunny
Hi 54°F	Lo 20°F	Hi 31°F	Lo 15°F	Hi 39°F	Lo 23°F	Hi 42°F	Lo 24°F	Hi 43°F

Detailed 7-day Forecast
Hazardous weather condition(s):
Hazardous Weather Outlook

Current Conditions (Move Down)
Wichita Mid-Continent Airport
Lat: 37.66 Lon: -97.43 Elev: 1320
Last Update on Jan 3, 1:53 pm CST

A Few Clouds
Humidity: 57 %
Wind Speed: NW 15 MPH
Barometer: 29.56" (1001.2 mb)
Dewpoint: 38°F (3°C)
Wind Chill: 48°F (9°C)
Visibility: 10.00 mi.
More Local Wx: 3 Day History

Radar and Satellite Images

Detailed Point Forecast (Move Up)
Click Map for Forecast Disclaimer
Wichita, KS
Requested Location Forecast Area
Lat/Lon: 37.67N 97.31W Elevation: 1312 ft

National Digital Forecast Database

Additional Forecasts & Information
Zone Area Forecast for Sedgewick County, KS
Forecast Discussion Air Quality Forecasts
Printable Forecast Text Only Forecast
Hourly Weather Graph Tabular Forecast
International System of Units About Point Forecasts
Hazardous Weather Outlook Interactive Forecasts
Daily Climate Summary for Wichita including sunrise and sunset times

NOAA's National Weather Service Weather Forecast Office
Wichita, Kansas

Home Site Map News Organization

Local forecast by "City, St" or Zip Code
City, St [Go]

Current Hazards
Watches / Warnings
U.S. Hazards
Hurricane Info
Graphical HWO

Current Conditions
Observations
Satellite Images
Rivers & Lakes AHPS
Precip Estimate
Snow Cover

Radar Imagery
Local Radar
Nationwide
Local Radar (Dial-Up)

Forecasts
Activity Planner
Local Area
Aviation
Fire Weather
Graphical
Model Guidance
Forecast Discussion

Rivers / Hydrology
AHPS / River Info
Hydro Products
River Summary

Climate
Local
National
More...

Weather Safety
StormReady
Preparedness
Weather Radio
EMWII
SKYWARRI
Emergency Mngrs
Weather DVD's
Winter Weather

Top News of the Day
Hazard Level for Next 3 Days...
Historic Rainfalls Turn Wichita into a Water Wonderland in 2008
Top Five Weather Events of 2008
Archived Weather Stories...

Watches & Warnings Observations Forecast Graphics Rivers & Lakes Climate Fire Weather

Click on the map below for the latest forecast.

Read watches, warnings & advisories
Freezing Rain Advisory
Wind Advisory
Hazardous Weather Outlook
Short Term Forecast

Latest Conditions in Wichita Mid-Continent, KS
Jan 3 1:53 pm 53°F (12°C) A Few Clouds
Select A City:

Weather Story Radar Satellite Weather Map

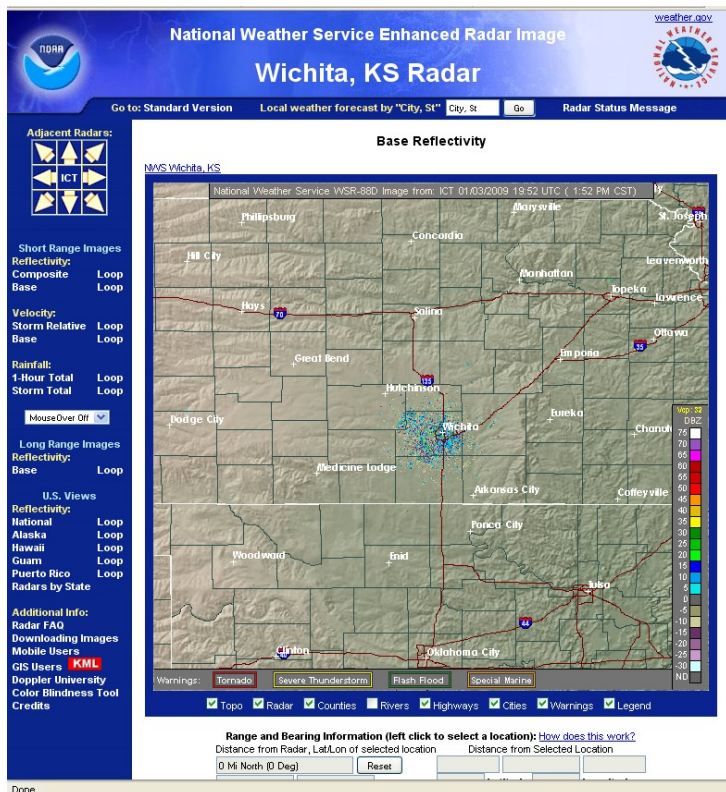
Top Items of the Day

Click here for detailed forecast products

- **Forecast Discussion:** Meteorological discussion of current Forecast.
- **Hourly Weather Graph:** Graphical version of Forecast.
- **Tabular Forecast:** Current forecast in a tabular format
- **Daily Climate Summary:** Summary of the Climatic data for the previous day ending at midnight.
- **Hazardous Weather Outlook:** Graphical and text version of the HWO. Categories 0-5 with 0 being no hazardous weather to 5 being Very Significant weather.

The National Weather Service Online

www.weather.gov/wichita



National Weather Service Doppler Radar

- Monitor Radar to watch for Precipitation moving toward your area
- Shows current polygon Severe Thunderstorm and Tornado warnings
- Looping capabilities in either Base or Composite Reflectivity modes
- Can choose to show velocity data in Base and Storm Relative data
- Shows accumulated rainfall, both 1-hour accumulations and storm total accumulations

You can also easily select to monitor a radar that is surrounding the local radar by choosing it's location via arrow at the top left of the webpage.

Helpful Numbers

Brought to you by the National Weather Service in Wichita, KS



Daily Forecast and Climate Information

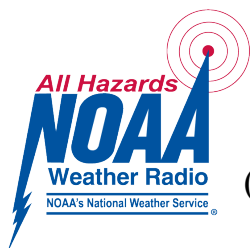
- 316-942-3102

Kansas Road Conditions

- 511

Monitor SKYWARN Severe Weather Observers
On Ham Radio

- South Central Kansas: 146.94 Mhz
- Central Kansas: 146.82 Mhz
- Southeast Kansas: 145.13 Mhz



Need Continuous Weather Information?
Make sure and have a Weather Radio tuned to the nearest local frequency.

(See handout or go to the NWS online for information)