



# Advanced Hydrologic Prediction Service - AHPS

Jonathan Brazzell  
Service Hydrologist  
National Weather Service Lake Charles

[www.srh.weather.gov](http://www.srh.weather.gov)



# Advanced Hydrologic Prediction Service - AHPS

- Enhance current services and products through:
  - Probabilistic Forecasts
  - Graphical Products
  - Flood Inundation Mapping

[www.srh.weather.gov](http://www.srh.weather.gov)



# AHPS Basic Services

- AHPS Webpage at Forecast Office (WFO) level
  - Hydrograph
  - River Impacts
- Probabilistic forecasts
  - Graphical Products
    - Created by RFC
    - Products located on WFO AHPS web-page

[www.srh.weather.gov](http://www.srh.weather.gov)



# To Begin

- Go to NWS webpage web page  
-Weather.GOV
- Or Lake Charles Webpage at  
-[www.srh.noaa.gov/lch](http://www.srh.noaa.gov/lch)

**[www.srh.weather.gov](http://www.srh.weather.gov)**





# Weather.GOV

NOAA's National Weather Service

National Oceanic and Atmospheric Administration's  
**National Weather Service**

Site Map News Organization Search

Local forecast by "City, St"

City, St Go

RSS Feeds

Warnings Current By State/County... UV Alerts

Observations Radar Satellite Snow Cover Surface Weather... Observed Precip

Forecasts Local Graphical Aviation Marine Hurricanes Severe Weather Fire Weather Text Messages By State By Message Type National

Forecast Models Numerical Models Statistical Models... MOS Prod GFS-LAMP Prod

NOAA Predicts Near Normal or Above Normal Atlantic Hurricane Season...  
NOAA's Climate Prediction Center today announced that projected climate conditions point to a near normal or above normal hurricane season in the Atlantic Basin this year. Hurricane season officially begins in the Atlantic on June 1. Details...

Warnings & Forecasts Graphical Forecasts National Maps Radar Water Air Quality Satellite Climate

Warnings By State Go Click Below To Zoom In Tabs At A Glance

Created: 05/28/09 at 02:00 UTC

Southeastern Wyoming and Western Nebraska

American Samoa Guam Puerto Rico/Virgin Islands

Severe Thunderstorm Warning	Flood Statement	Flood Watch
Flash Flood Warning	Freeze Warning	Fire Weather Watch
Flood Warning	Red Flag Warning	Special Weather Statement
Severe Thunderstorm Watch	Flood Advisory	Marine Weather Statement
Flash Flood Watch	Small Craft Advisory	Hazardous Weather Outlook
Severe Weather Statement	Frost Advisory	Short Term Forecast


http://www.srh.noaa.gov/cjs/

[www.srh.weather.gov](http://www.srh.weather.gov)



# Click on Water Tab

NOAA's National Weather Service

 National Oceanic and Atmospheric Administration's  
**National Weather Service**

Site Map      News      Organization

Local forecast by "City, St"  
City, St    
[XML](#) [RSS Feeds](#)  
Warnings  
Current  
By State/County...  
UV Alerts  
Observations  
Radar  
Satellite  
Snow Cover  
Surface Weather...  
Observed Precip  
Forecasts  
Local  
Graphical  
Aviation  
Marine  
Hurricanes  
Severe Weather  
Fire Weather  
Text Messages  
By State  
By Message Type  
National  
Forecast Models  
Numerical Models  
Statistical Models...  
MOS Prod  
GFS-LAMP Prod

**...NOAA Predicts Near Normal or Above Normal Atlantic Hurricane Season...**  
NOAA's Climate Prediction Center today announced that projected climate conditions point to a near normal or above normal hurricane season in the Atlantic Basin this year. Hurricane season officially begins in the Atlantic on June 1. [Details...](#)

Warnings & Forecasts    Graphical Forecasts    National Maps    Radar    **Water**    Air Quality    Satellite    Climate

Warnings By State       Click Below To Zoom In.      Tabs At A Glance

Created: 05/28/08 at 02:40 UTC

Severe Thunderstorm Warning	Flood Statement	Flood Watch
Flash Flood Warning	Freeze Warning	Fire Weather Watch
Flood Warning	Red Flag Warning	Special Weather Statement
Severe Thunderstorm Watch	Flood Advisory	Marine Weather Statement
Flash Flood Watch	Small Craft Advisory	Hazardous Weather Outlook
Severe Weather Statement	Frost Advisory	Short Term Forecast

[American Samoa](#) · [Guam](#) · [Puerto Rico/Virgin Islands](#)

<http://www.weather.gov/ahps/>



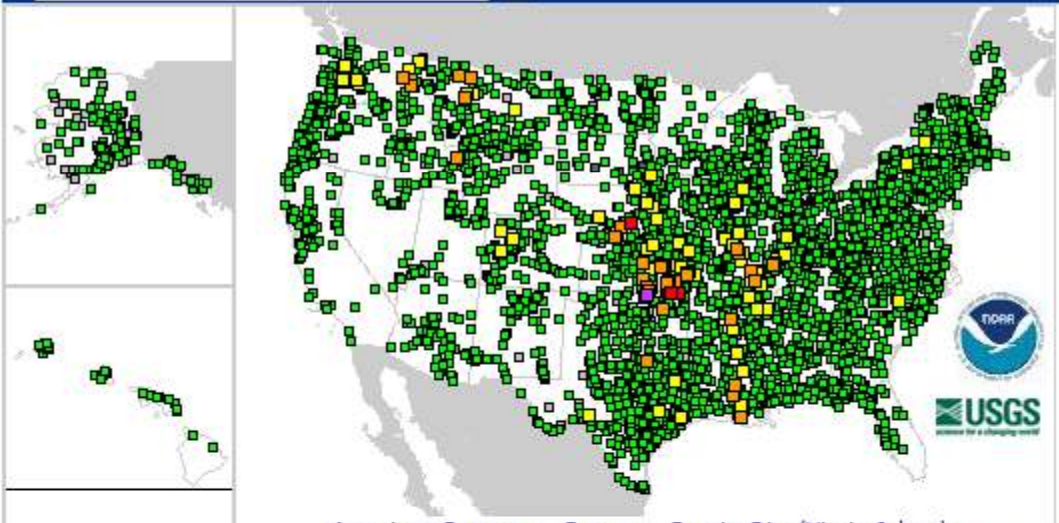
- "City, St"
- City, St
- XML** RSS Feeds
- Warnings
  - Current
  - By State/County...
  - UV Alerts
- Observations
  - Radar
  - Satellite
  - Snow Cover
  - Surface Weather...
  - Observed Precip
- Forecasts
  - Local
  - Graphical
  - Aviation
  - Marine
  - Hurricanes
  - Severe Weather
  - Fire Weather
- Text Messages
  - By State
  - By Message Type
  - National
- Forecast Models
  - Numerical Models
  - Statistical Models...
  - MOS Prod
  - GFS-LAMP Prod
- Climate
  - Past Weather
  - Predictions
- Weather Safety
  - Weather Radio
  - Hazard Assmt...
  - StormReady /
  - TsunamiReady

National Hydrologic Assessment is Now Available: Above Average Flood Risk in Nation's Midsection, Northeast and Parts of the West

- Warnings & Forecasts
- Graphical Forecasts
- National Maps
- Radar
- Water**
- Air Quality
- Satellite
- Climate

- River Observations
- River Forecasts
- Precipitation
- River Download
- Other Information

All Locations  Click The Map To Zoom In.



American Samoa · Guam · Puerto Rico/Virgin Islands · **Contiguous United States**

**3798 Total Gauges**  
**40 Locations in Flood**

<span style="display: inline-block; width: 10px; height: 10px; background-color: #d3d3d3; border: 1px solid black;"></span> 235 Gauges: Observations older than 24 hours	<span style="display: inline-block; width: 10px; height: 10px; background-color: #ff00ff; border: 1px solid black;"></span> 1 Gauges: Major Flooding
<span style="display: inline-block; width: 10px; height: 10px; background-color: #808080; border: 1px solid black;"></span> 15 Gauges: Out of Service	<span style="display: inline-block; width: 10px; height: 10px; background-color: #ff0000; border: 1px solid black;"></span> 3 Gauges: Moderate Flooding
	<span style="display: inline-block; width: 10px; height: 10px; background-color: #ffa500; border: 1px solid black;"></span> 36 Gauges: Minor Flooding
	<span style="display: inline-block; width: 10px; height: 10px; background-color: #ffff00; border: 1px solid black;"></span> 63 Gauges: Near Flood Stage
	<span style="display: inline-block; width: 10px; height: 10px; background-color: #00ff00; border: 1px solid black;"></span> 3445 Gauges: No Flooding

Last map update: Tue, May, 27, 2008 at 10:43:27 pm EDT.

- |  |   |
|--|---|
| <b>Hydrologic Resources</b>              | <b>Additional Resources</b>                                     |
| <a href="#">▶ Text Products</a>          | <a href="#">▶ National Significant River Flood Outlook</a>      |
| <a href="#">▶ River Forecast Centers</a> | <a href="#">▶ U.S. Geological Survey Streamflow Information</a> |
| <a href="#">▶ About AHPS</a>             | <a href="#">▶ Snow Information</a>                              |
| <a href="#">▶ Partners</a>               |   |

City, St  Go

**XML** RSS Feeds

Warnings

Current

By State/County...

UV Alerts

Observations

Radar

Satellite

Snow Cover

Surface Weather...

Observed Precip

Forecasts

Local

Graphical

Aviation

Marine

Hurricanes

Severe Weather

Fire Weather

Text Messages

By State

By Message Type

National

Forecast Models

Numerical Models

Statistical Models...

MOS Prod

GFS-LAMP Prod

Climate

Past Weather

Predictions

Weather Safety

Weather Radio

Hazard Assmt...

StormReady /

TsunamiReady

StormReady

National Hydrologic Assessment is Now Available: Above Average Flood Risk in Nation's Midsection, Northeast and Parts of the West

Warnings & Forecasts

Graphical Forecasts

National Maps

Radar

Water

Air Quality

Satellite

Climate

River Observations

River Forecasts

Precipitation

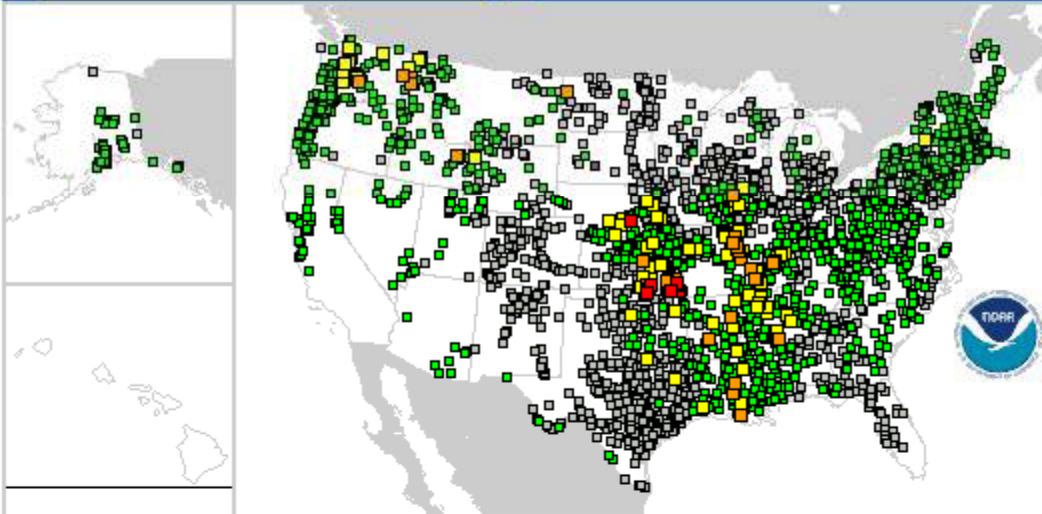
River Download

Other Information

All Locations

Go

Click The Map To Zoom In.



American Samoa · Guam · Puerto Rico/Virgin Islands

2578 Total Gauges

38 Locations in flood during 48 hour forecast period

1364 Gauges: Forecast older than 24 hours

8 Gauges: Out of Service

0 Gauges: Major Flooding

7 Gauges: Moderate Flooding

31 Gauges: Minor Flooding

72 Gauges: Near Flood Stage

1096 Gauges: No Flooding

Last map update: Tue, May, 27, 2008 at 10:43:27 pm EDT.

Hydrologic Resources

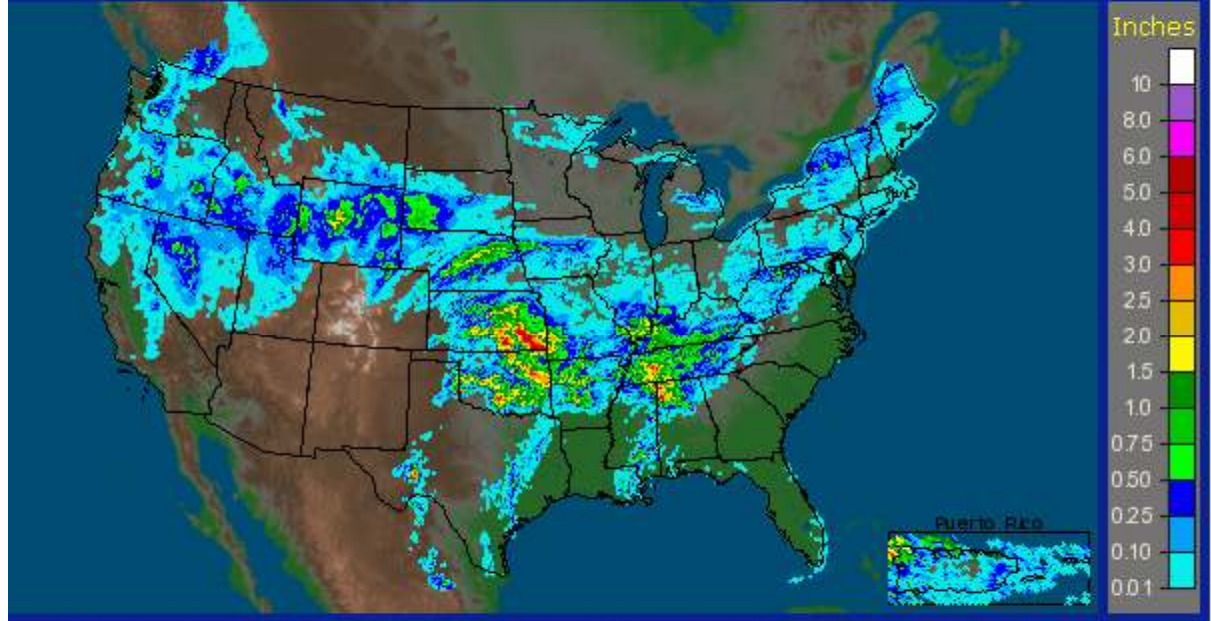
- ▶ [Text Products](#)
- ▶ [River Forecast Centers](#)
- ▶ [About AHPS](#)
- ▶ [Partners](#)
- ▶ [AHPS Feedback](#)

Additional Resources

- ▶ [National Significant River Flood Outlook](#)
- ▶ [U.S. Geological Survey Streamflow Information](#)
- ▶ [Snow Information](#)



**CONUS + Puerto Rico: Current 1-Day Observed Precipitation**  
Updated at 5/27/2008 1200 UTC - Created 5/27/08 22:37 UTC



Topo  Pcpn Amount  Counties  Rivers  States  Highway/City  RFC Boundary

**Timeframe** » **2. Product** » **3. Location** » **4. Units**

Current Data  
Archive: Month/Year  
Archive: Daily

5/27, 2008 - Today	Observed
5/27, 2008 - Last 7 Days	
5/27, 2008 - Last 14 Days	
5/27, 2008 - Last 30 Days	
5/27, 2008 - Last 60 Days	

States  
 NWS RFC/Regions  
 NWS WFOs

English  
 Metric

CONUS + Puerto Rico  
Alabama  
Arizona  
Arkansas  
California

Missing Data

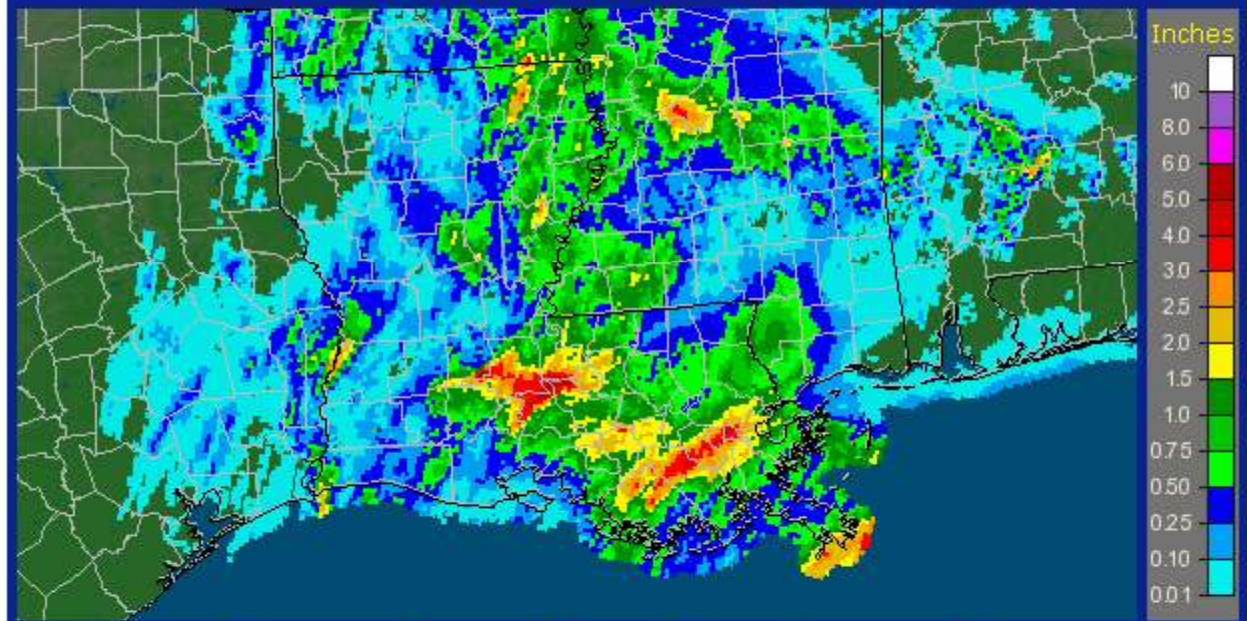
Update URL for Bookmarking | Zoom Out to CONUS

- By State/County...
- UV Alerts
- Observations
  - Radar
  - Satellite
  - Snow Cover
  - Surface Weather...
  - Observed Precip
- Forecasts
  - Local
  - Graphical
  - Aviation
  - Marine
  - Hurricanes
  - Severe Weather
  - Fire Weather
- Text Messages
  - By State
  - By Message Type
  - National
- Forecast Models
  - Numerical Models
  - Statistical Models...
- Climate
  - Past Weather
  - Predictions
- Weather Safety
  - Weather Radio
  - Hazard Assmt...
  - StormReady / TsunamiReady
- Education/Outreach
- Information Center
  - Tsunamis
  - Publications...
- Contact Us
  - FAQ
  - Comments

- River Observations
- River Forecasts
- Precipitation
- River Download
- Other Information

- Images
- Download
- About NWS Precip Analysis
- Other Useful Information
- Survey & Feedback
- Regional / RFC Precip Data

Louisiana: 5/23/2008 1-Day Observed Precipitation  
Valid at 5/23/2008 1200 UTC - Created 5/25/08 10:32 UTC



- Topo
- Pcpn Amount
- Counties
- Rivers
- States
- Highway/City
- RFC Boundary

1. Timeframe    » 2. Product    » 3. Location    » 4. Units

Current Data     Archive: Month/Year     States     English

Archive: Daily     Observed     NWS RFC/Regions     Metric

Archive: Daily     NWS WFOs

Year: 2008           

Month: May       

Day: 23





Local forecast by  
"City, St"

City, St Go

**XML** RSS Feeds

Warnings

Current

By State/County...

UV Alerts

Observations

Radar

Satellite

Snow Cover

Surface Weather...

Observed Precip

Forecasts

Local

Graphical

Aviation

Marine

Hurricanes

Severe Weather

Fire Weather

Text Messages

By State

By Message Type

National

Forecast Models

Numerical Models

Statistical Models...

MOS Prod

Home > Water > Download

Warnings & Forecasts	Graphical Forecasts	National Maps	Radar	Water	Air Quality	Satellite	Climate
River Observations	River Forecasts	Precipitation	River Download	Other Information			

River Download

## AHPS Downloads

While the AHPS display allows for the use of interactive toggles with the image, AHPS data can also be utilized within GIS software. This page links to "Shapefiles" and "KMZ" files which are compressed "KML" files compatible with several GIS software applications. [A list of some of the software applications that support Shapefiles and KML can be found here.](#) Or, visit the [NWS website Standards Description Website](#) which explains KML in more detail.

### Shapefiles and KMZ Files

- [Shapefile \(Observed\)](#) (250k) Updated every 15 minutes
- [Shapefile \(Forecast\)](#) (173k) Updated every 15 minutes
- [KMZ \(Observed\)](#) (356k) Updated every 15 minutes
- [KMZ \(Forecast\)](#) (345k) Updated every 15 minutes

### RSS

- [AHPS RSS](#)





National Oceanic and Atmospheric Administration's

# National Weather Service

Site Map

News

Organization

Search

Local forecast by "City, St"

City, St Go

**XML** RSS Feeds

Warnings

Current

By State/County...

UV Alerts

Observations

Radar

Satellite

Snow Cover

Surface Weather...

Observed Precip

Forecasts

Local

Graphical

Aviation

Marine

Hurricanes

Severe Weather

Fire Weather

Text Messages

By State

By Message Type

National

Forecast Models

Numerical Models

Statistical Models...

MOS Prod

Home > Water

## Click on map to drill down

National Hydrologic Assessment is Now Available: Above Average Flood Risk in Nation's Midsection, Northeast and Parts of the West

Warnings & Forecasts

Graphical Forecasts

National Maps

Radar

Water

Air Quality

Satellite

Climate

River Observations

River Forecasts

Precipitation

River Download

Other Information

All Locations

Go

Click The Map To Zoom In.



American Samoa · Guam · Puerto Rico/Virgin Islands

3804 Total Gauges

40 Locations in Flood

1 Gauges: Major Flooding

3 Gauges: Moderate Flooding





**ALERT!! A Flood Warning** is in effect for portions of the area. [View all valid statements/warnings](#) or choose a specific point or river to get the details for that location.

Weather Forecast Office Lake Charles, LA

Local weather forecast by "City, ST"

City, ST  Go

Adjacent Areas:



National Conditions  
Rivers  
Satellite  
Climate  
Observed Precip

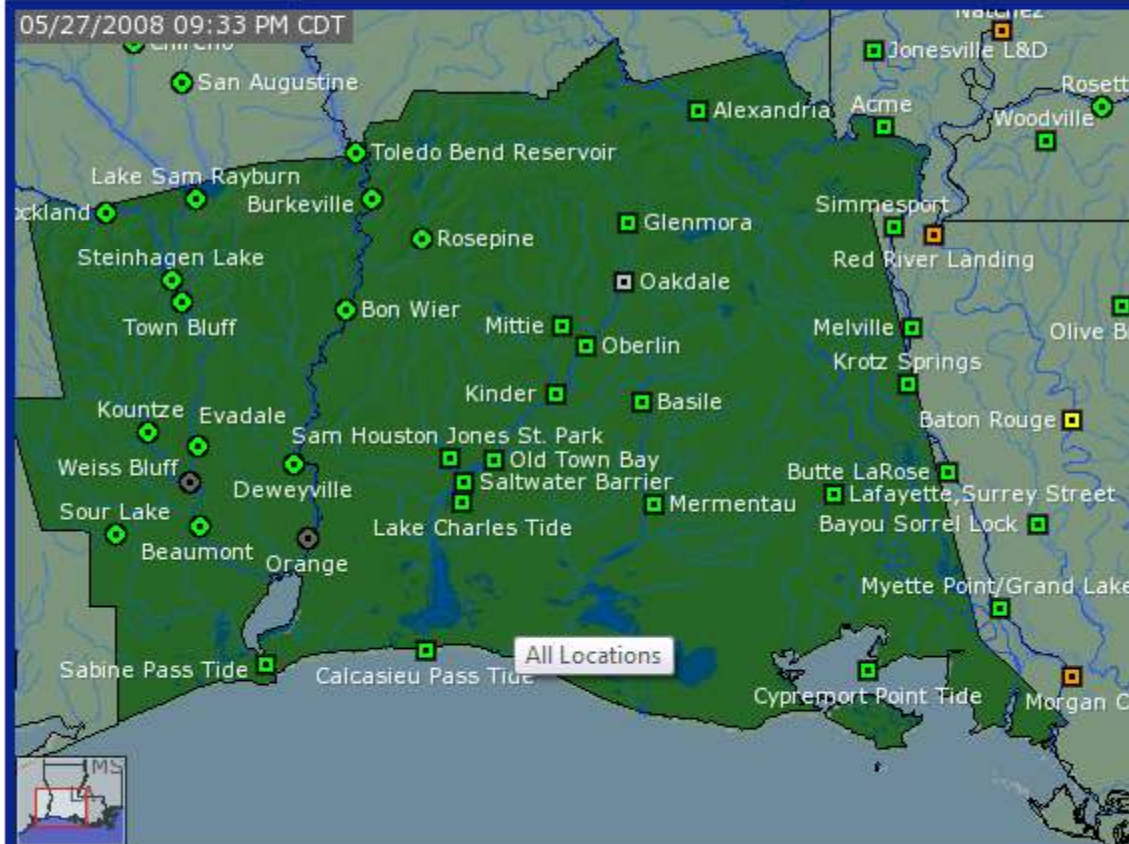
Local Conditions  
Warnings  
Weather Forecast  
Lake Charles Radar  
Fort Polk Radar

What is AHPS?  
Facts  
Our Partners

Feedback/Questions  
Provide Feedback  
Ask Questions



River Observations River Forecasts Within 48 Hours Precipitation Download



Print / Save Map

Map Legend

- Hydrograph Available
- Probability and Hydrograph Available
- Major Flooding
- Moderate Flooding
- Minor Flooding
- Near Flood Stage
- No Flooding
- Observation More Than 24 Hours Old
- Out of Service

- Topo  Gauges  Counties  States  Major Rivers  Other Rivers  Highways  Cities
- HSA  Names  Names  Names





Local weather forecast by "City, ST"

City, ST Go

National Conditions  
Rivers  
Satellite  
Climate  
Observed Precip

Local Conditions  
Warnings  
Weather Forecast  
Lake Charles Radar  
Fort Polk Radar

What is AHPS?  
Facts  
Our Partners

Feedback/Questions  
Provide Feedback  
Ask Questions

Observations courtesy of

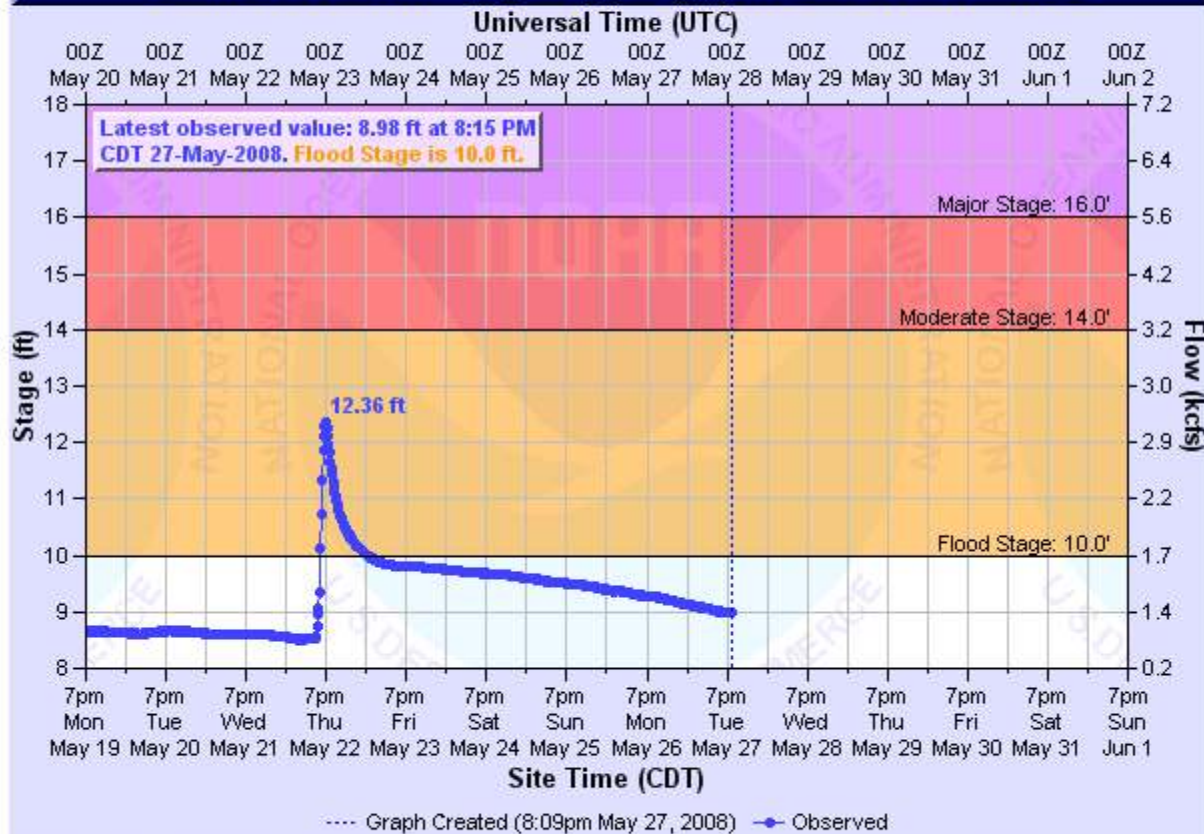


Weather Forecast Office Lake Charles, LA

Lower Mississippi River Forecast Center

Hydrograph River at a Glance Download

### VERMILION RIVER AT LAFAYETTE, SURREY STREET GAGE



VLSL1 (plotting HGIRG) "Gage 0" Datum: n/a

Observations courtesy of the US Geological Survey

Printable Image

About this graph

Tabular Data

NOTE: Graphical forecasts are not available for the Vermilion River at Lafayette, Surrey Street. During times of high water, forecast crest information can be found in the [text products](#).

Default Hydrograph

Return to Area Map

Observations courtesy of



Mon May 19 Tue May 20 Wed May 21 Thu May 22 Fri May 23 Sat May 24 Sun May 25 Mon May 26 Tue May 27 Wed May 28 Thu May 29 Fri May 30 Sat May 31 Sun Jun 1

**Site Time (CDT)**

---- Graph Created (8:09pm May 27, 2008) — Observed

VLSL1 (plotting HGIRG) "Gage 0" Datum: n/a' Observations courtesy of the US Geological Survey

- Printable Image
- About this graph
- Tabular Data
- XML**
- RSS**
- Datum: N/A
- Metadata

**NOTE:** Graphical forecasts are not available for the Vermilion River at Lafayette, Surrey Street. During times of high water, forecast crest information can be found in the [text products](#).

Default Hydrograph

[Return to Area Map](#)

**Flood Categories (in feet)**

Major Flood Stage:	16
Moderate Flood Stage:	14
Flood Stage:	10
Action Stage:	10

**Historical Crests**

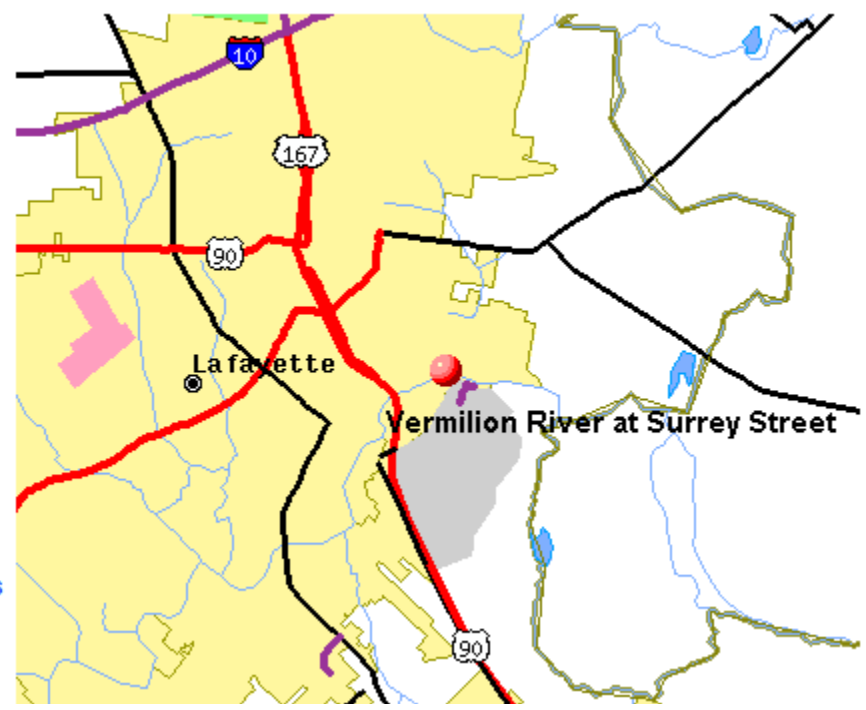
- (1) 24.87 ft on 08/09/1940
- (2) 16.80 ft on 03/13/1947
- (3) 16.37 ft on 04/08/1942
- (4) 15.81 ft on 01/20/1993
- (5) 15.56 ft on 05/17/1980

[Show More Historical Crests](#)

**Low Water Records**

- (1) 0.6 ft on 11/03/1966
- (2) 0.8 ft on 11/20/1969
- (3) 2.4 ft on 02/23/1989

[Show More Low Water Records](#)



Flood Impacts

 Collapse

- 24.9 THE RIVER IS AT ITS FLOOD OF RECORD. WATER SEVERAL FEET DEEP IN PORTIONS OF CROWLEY, LAFAYETTE, KAPLAN AND OTHER NEARBY COMMUNITIES. PORTIONS OF HWY 167 BETWEEN LAFAYETTE AND ABBEVILLE UNDER 5 FEET OF WATER.
- 18.4 THE RIVER IS AT ITS 100 YEAR FLOOD LEVEL. MAJOR FLOODING WILL OCCUR.
- 16.0 WIDESPREAD MAJOR FLOODING WILL OCCUR.
- 14.6 WIDESPREAD MODERATE FLOODING WILL OCCUR.
- 14.0 MODERATE FLOODING IN LAFAYETTE, WITH SIGNIFICANT FLOODING NEAR WHERE COULEES AND BAYOUS INTERSECT THE VERMILION RIVER.
- 13.5 FLOODING OF SOME YARDS NEAR THE RIVER WILL OCCUR. SIGNIFICANT FLOODING OF BEAVER PARK AND VERMILIONVILLE WILL OCCUR.
- 11.5 MINOR FLOODING OF BEAVER PARK AND VERMILIONVILLE NEAR THE RIVER WILL OCCUR.
- 10.0 MINOR FLOODING OF HEYMANN PARK OFF OF HIGHWAY 90 WILL OCCUR.

About This Location

 Collapse

Latitude: 30.217200° N, Longitude: 91.992800° W, Horizontal Datum: NAD83

River Stage Reference Frame	Gauge Height	Flood Stage	Uses
NWS stage	0 ft	10 ft	Interpreting hydrographs and NWS watch, warnings, and forecasts, and inundation maps
Vertical Datum	Elevation (gauge height = 0)	Elevation (gauge height = flood stage)	Elevation information source
NAVD88	-2.74 ft	7.26 ft	Survey grade GPS equipment, FEMA flood plain maps, newer USGS topographic maps
NGVD 29	N/A	N/A	Older USGS topographic maps, NGVD29 benchmarks



			topographic maps
NGVD 29	N/A	N/A	Older USGS topographic maps, NGVD29 benchmarks
MSL	N/A	N/A	Older USGS topographic maps, MSL benchmarks
Other	N/A	N/A	

**Other Data Sources:**

[Corps of Engineers \(COE\) Info for Lafayette, Surrey Street](#)  
[U.S. Geological Survey \(USGS\) Data and Site Info for Lafayette, Surrey Street](#)

Multiple data sources  Collapse


Resources

**Hydrologic Resources**

- ▶ [Text Products](#)
- ▶ [Past Precipitation](#)
- ▶ [Forecast Precipitation](#)
- ▶ [River Forecast Centers](#)
- ▶ [Lake Charles Hydrology page](#)
- ▶ [Inundation Mapping Locations](#)

**Additional Resources**

- ▶ [Area Hydrographs](#)
- ▶ [Current river stages](#)
- ▶ [Snow Information](#)

Collaborative Agencies  Collapse

The National Weather Service prepares its forecasts and other services in collaboration with agencies like the US Geological Survey, US Bureau of Reclamation, US Army Corps of Engineers, Natural Resource Conservation Service, National Park Service, ALERT Users Group, Bureau of Indian Affairs, and many state and local emergency managers across the country. For details, please [click here](#).

NWS Information

National Weather Service  
 Lake Charles Weather Forecast Office  
 500 Airport Boulevard  
 Lake Charles, LA 70607  
 (337) 477-5285  
[Ask Questions/Message](#)

[Disclaimer](#)  
[Credits](#)  
[Glossary](#)

[Privacy Policy](#)  
[About Us](#)  
[Career Opportunities](#)



## National Water Information System: Web Interface

[USGS Water Resources](#)

New! Subscribe to [NWISWeb notifications](#)

# USGS 07386880 Vermilion River at Surrey St. at Lafayette, LA

## PROVISIONAL DATA SUBJECT TO REVISION

Available data for this site

Time-series: Real-time data

GO

**Data for this site provided through cooperative programs with the U. S. Army Corp of Engineers (New Orleans District) and the Bayou Vermilion District, Lafayette Parish.**

This station managed by the Baton Rouge Field Office.

### Available Parameters

- All 5 Available Parameters for this site
- 00065 Gage height
- 00055 Stream velocity
- 00060 Discharge
- 00045 Precipitation

### Output format

- Graph
- Graph w/ stats
- Graph w/o stats
- Table
- Tab-separated

### Days

7  
(1-31)

GO





NOAA's National Weather Service

# Advanced Hydrologic Prediction Service

Home News Organization Search for:  NWS All NOAA

Local weather forecast by "City, ST"

National Conditions  
 Rivers  
 Satellite  
 Climate  
 Observed Precip

Local Conditions  
 Warnings  
 Weather Forecast

What is AHPS?  
 Facts  
 Our Partners

Feedback/Questions  
 Provide Feedback  
 Ask Questions



## Hydrologic Text Information Issued by NWS Lake Charles, LA

- ▶ **Flash Flood Warning** None issued by this office recently.  
 Issued when rapidly rising water poses an immediate hazard to life and property. [more info...](#)
- ▶ **Flash Flood Statement** None issued by this office recently.  
 Provides additional information on Flash Flood Warnings. [more info...](#)
- ▶ **Flood Warning** None issued by this office recently.  
 Issued when rising water will impact life and property. [more info...](#)
- ▶ **Flood Statement** None issued by this office recently.  
 Provides information on elevated streams or rivers, urban flooding, and updated or or cancellation information for Flood Watches or Warnings. [more info...](#)
- ▶ **Flood Watch** None issued by this office recently.  
 Issued to alert the public to the possibility of flooding. [more info...](#)
- ▶ **Hydrologic Outlook** Last Issued: 454 PM CDT THU MAY 15 2008  
 Provides information on longer range conditions. [more info...](#)
- ▶ **River and Lake Summary** Last Issued: 950 AM CDT TUE MAY 27 2008  
 Daily observed and forecast river and lake conditions. [more info...](#)
- ▶ **Hydrologic Summary** Last Issued: 1019 AM CDT TUE MAY 27 2008  
 Daily observed hydrologic conditions. [more info...](#)
- ▶ **Hydrologic Statement** None issued by this office recently.  
 Hydrologic forecasts and related information. [more info...](#)

[Return to Area Map](#)

Local weather forecast by "City, ST" City, ST Go

Additional Conditions Rivers Satellite Climate Observed Precip Local Conditions Warnings Weather Forecast Lake Charles Radar Port Polk Radar What is AHPS? Facts Our Partners Feedback/Questions Provide Feedback Ask Questions

Observations courtesy of

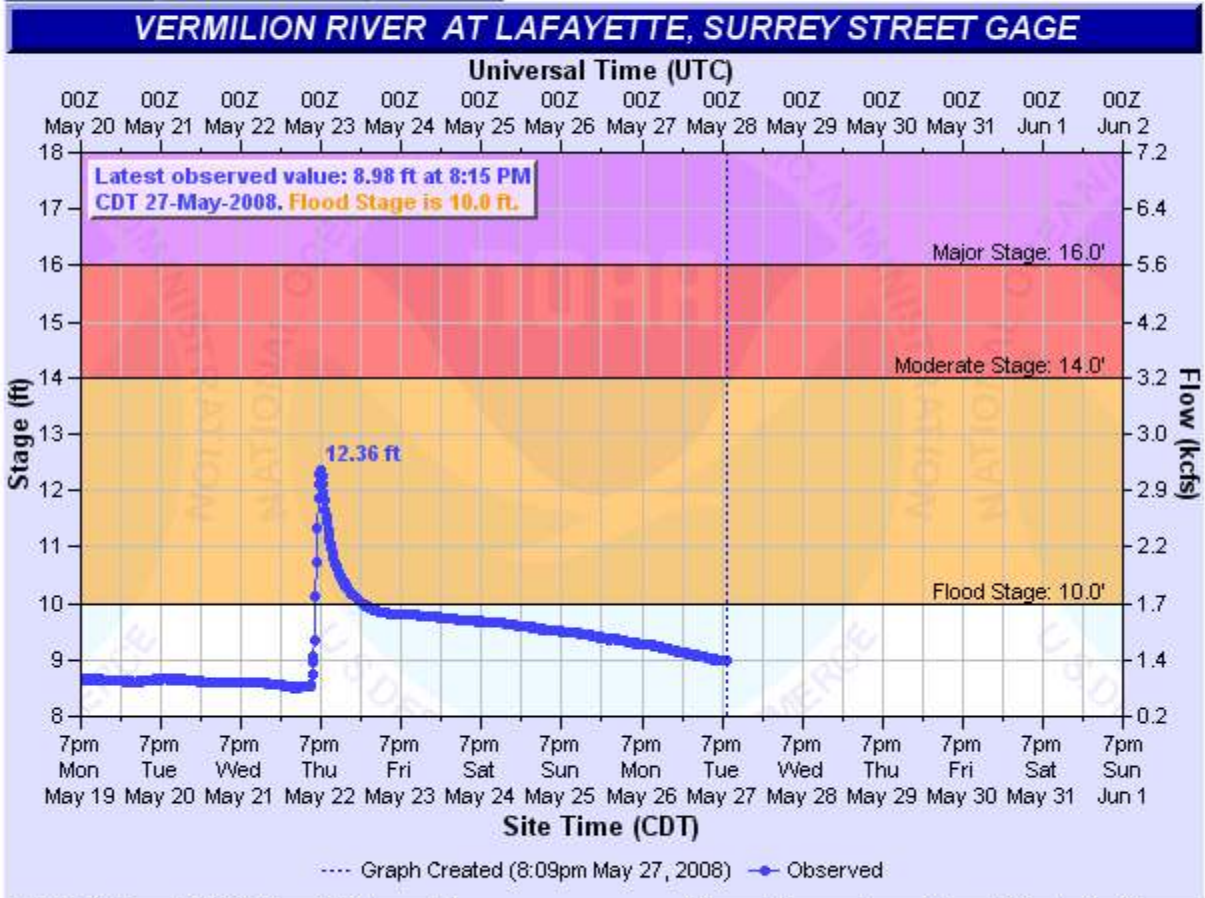


Weather Forecast Office Lake Charles, LA

Lower Mississippi River Forecast Center

Hydrograph River at a Glance Download

# River at a glance



VLSL1 (plotting HGIRG) "Gage 0" Datum: n/a Observations courtesy of the US Geological Survey

Printable Image About this graph Tabular Data

NOTE: Graphical forecasts are not available for the Vermilion River at Lafayette, Surrey Street. During times of high water, forecast crest information can be found in the text products.

Default Hydrograph

Return to Area Map





## National Weather Service

# Advanced Hydrologic Prediction Service

Home

News

Organization

Search for:

NWS All NOAA

Weather Forecast Office Lake Charles, LA

Hydrograph

River at a Glance

Local offices providing information for the Vermilion River:

Lake Charles, LA



### Vermilion River

Select the points:

and

Select the information you want:

NOTE: Availability of information varies.

at Lafayette, Surrey Street

- All
- Stage/Forecast Graph (Description)
- Stage/Forecast Text
- Flood Impacts
- Location Map
- Record Crest History
- Low Flow
- Low Water Impacts
- Low Water Records
- XML

Make my River Page!

Clear

Return to Area Map

Collaborative Agencies

Collapse

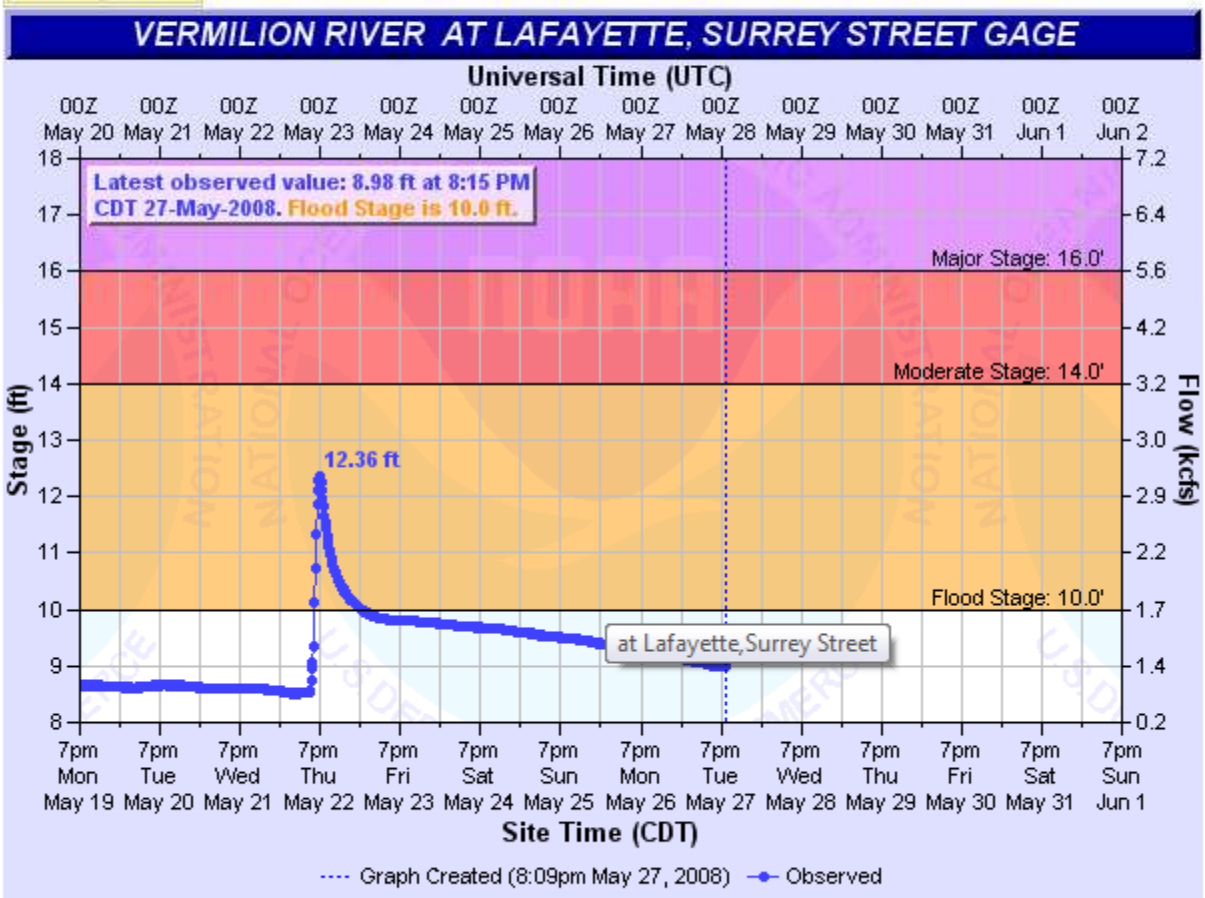
The National Weather Service prepares its forecasts and other services in collaboration with agencies like the

**at Lafayette, Surrey Street**  
 Flood Stage: 10Feet  
 Latest Stage: 8.97 ft at 02:15 UTC  
 05/28

Current  
 Warnings/Statements/Advisories:  
 None currently.

Complete information about  
 the Vermilion River at  
 Lafayette, Surrey Street  
 available from  
 NWS Lake Charles, LA.

[XML](#) [RSS](#)



VLSL1 (plotting HGIRG) "Gage 0" Datum: n/a Observations courtesy of the US Geological Survey

NOTE: Graphical forecasts are not available for the Vermilion River at Lafayette, Surrey Street. During times of high water, forecast crest information can be found in the [text products](#).





City, ST  
City, ST Go

Adjacent Areas:

National Conditions  
 Rivers  
 Satellite  
 Climate  
 Observed Precip

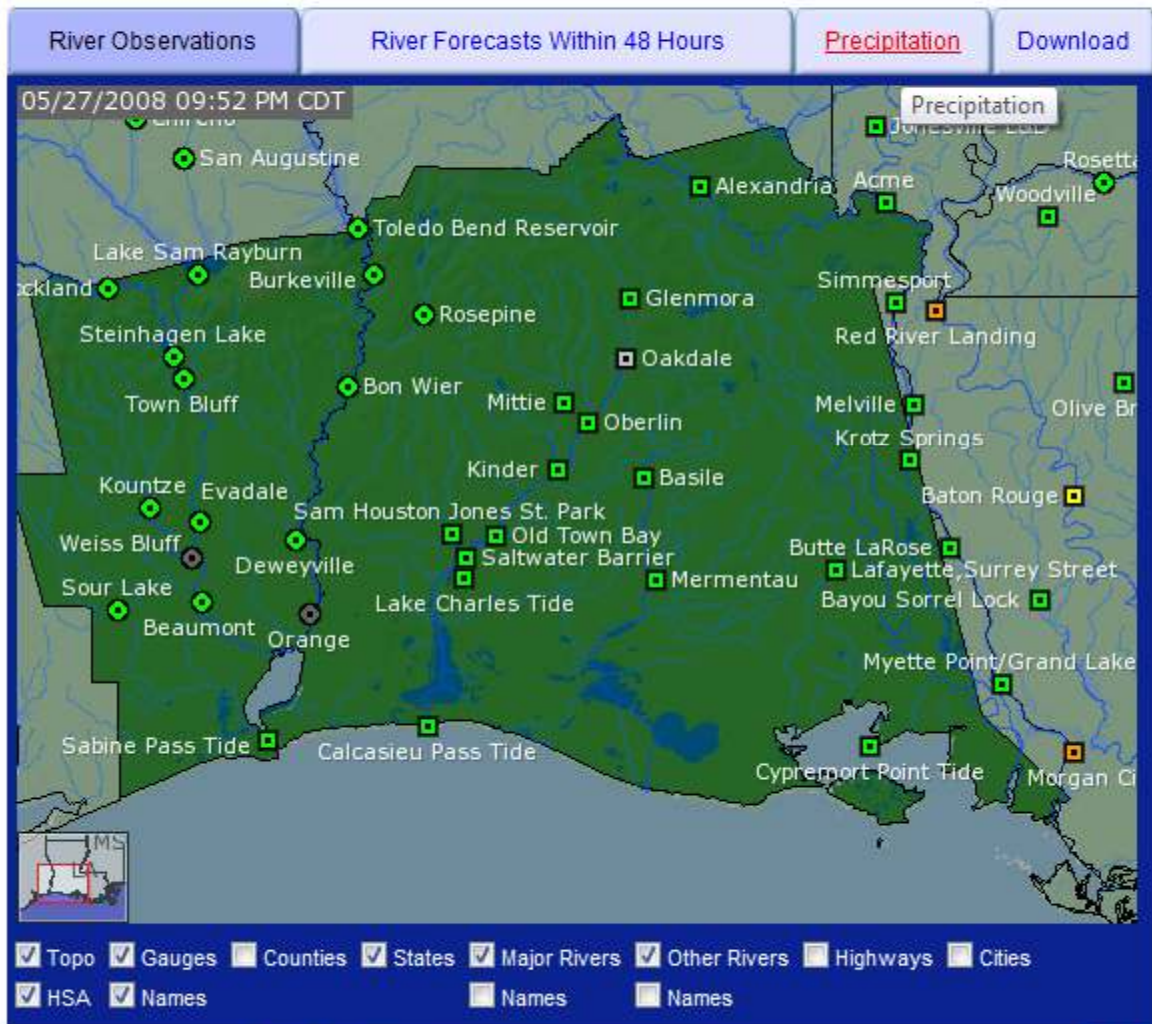
Local Conditions  
 Warnings  
 Weather Forecast  
 Lake Charles Radar  
 Fort Polk Radar

What is AHPS?  
 Facts  
 Our Partners

Feedback/Questions  
 Provide Feedback  
 Ask Questions

FLOODSMART.GOV  
 A Division of the National Flood Insurance Program

USA.gov  
 Government Made Easy



Print / Save Map

48 Total Gauges 3 Locations in Flood RSS

River Menus

Collapse

forecast by "City, ST"  
City, ST  Go

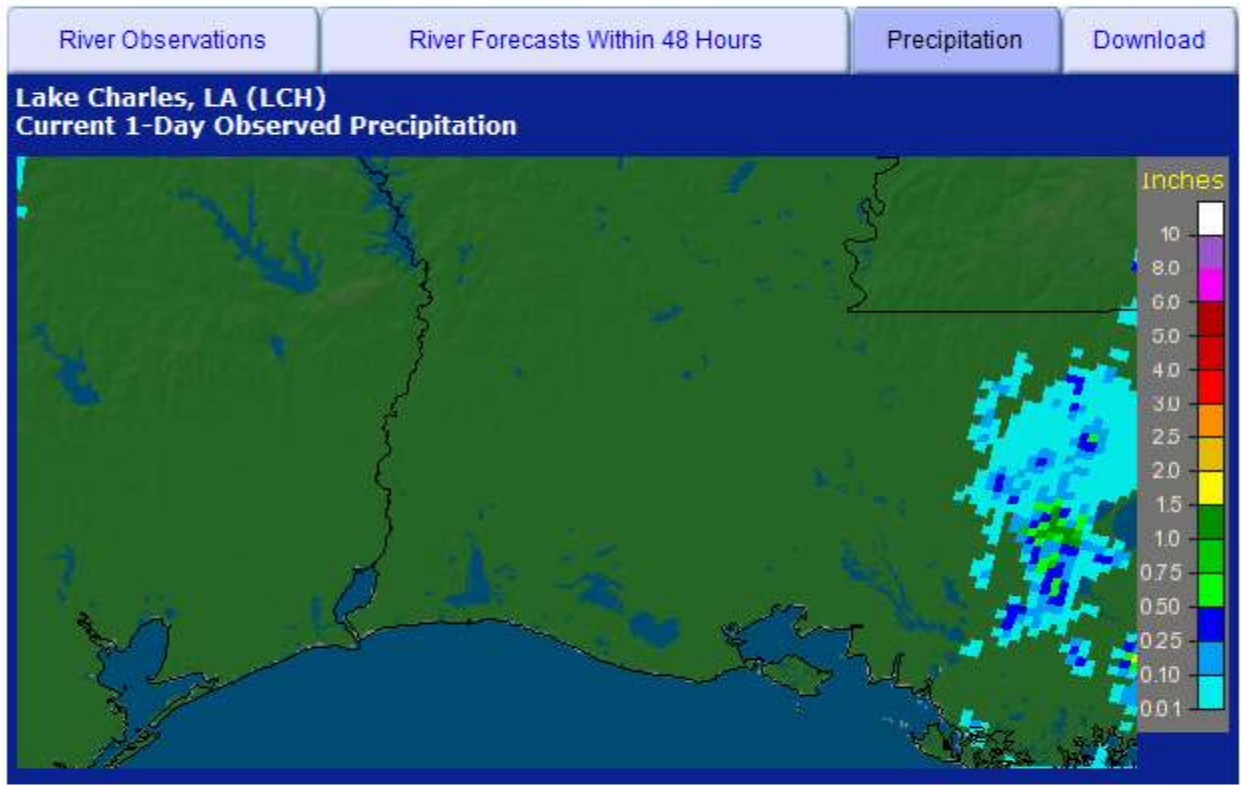
National Conditions  
Rivers  
Satellite  
Climate  
Observed Precip

Local Conditions  
Warnings  
Weather Forecast  
Lake Charles Radar  
Fort Polk Radar

What is AHPS?  
Facts  
Our Partners

Feedback/Questions  
Provide Feedback  
Ask Questions

Click on area map or link below to use precipitation interface.



[Click here](#) for Precipitation interface for Lake Charles, LA.

Precipitation interface for Lake Charles, LA Collapse

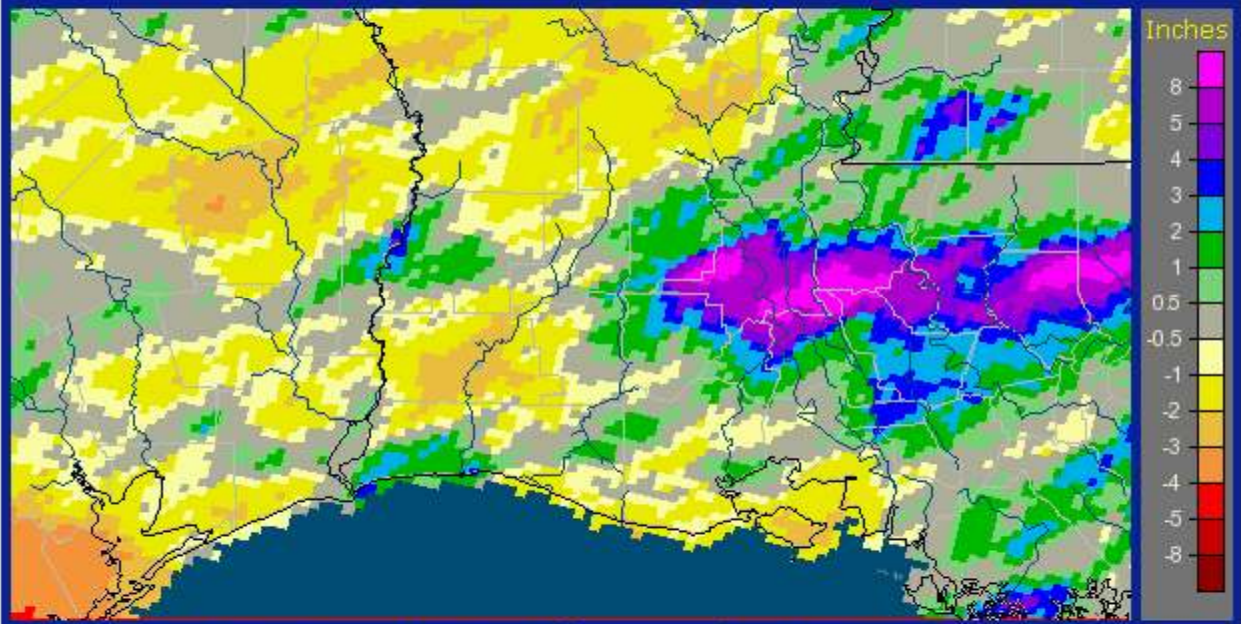
- Hydrologic Resources**
- ▶ Text Products
  - ▶ Past Precipitation
  - ▶ Forecast Precipitation
  - ▶ River Forecast Centers
  - ▶ [Lake Charles Hydrology page](#)
- Additional Resources**
- ▶ Area Hydrographs
  - ▶ Current river stages
  - ▶ Snow Information



- UV Alerts
- Observations
- Radar
- Satellite
- Snow Cover
- Surface Weather...
- Observed Precip
- Forecasts
- Local
- Graphical
- Aviation
- Marine
- Hurricanes
- Severe Weather
- Fire Weather
- Text Messages
- By State
- By Message Type
- National
- Forecast Models
- Numerical Models
- Statistical Models...
- Climate
- Past Weather
- Predictions
- Weather Safety
- Weather Radio
- Hazard Assmt...
- StormReady /
- TsunamiReady
- Education/Outreach
- Information Center
- Tsunamis
- Publications...
- Contact Us
- FAQ
- Comments...

- Images
- Download
- About NWS Precip Analysis
- Other Useful Information
- Survey & Feedback
- Regional / RFC Precip Data

**Lake Charles, LA (LCH): Current Month to Date Departure from Normal Precipitation**  
 Valid at 5/27/2008 1200 UTC - Created 5/27/08 22:47 UTC



- Topo
- Pcpn Amount
- Counties
- Map Overlay
- es
- Highway/City
- RFC Boundary

<b>1. Timeframe</b> <input checked="" type="radio"/> Current Data <input type="radio"/> Archive: Month/Year <input type="radio"/> Archive: Daily	<b>2. Product</b> <input type="radio"/> Observed <input type="radio"/> Normal <input checked="" type="radio"/> Departure from Normal <input type="radio"/> Percent of Normal	<b>3. Location</b> <input type="radio"/> States <input type="radio"/> NWS RFC/Regions <input checked="" type="radio"/> NWS WFOs	<b>4. Units</b> <input checked="" type="radio"/> English <input type="radio"/> Metric
---	--	--	---

May 27, 2008 - Last 90 Days

May 27, 2008 - Last 180 Days

**May 27, 2008 - Month to Date**

May 27, 2008 - Year to Date

May 27, 2008 - Water-Year to Date (Oct 1

Observed

Normal

**Departure from Normal**

Percent of Normal

**Lake Charles, LA (LCH)**

Las Vegas, NV (VEF)

Lincoln, IL (ILX)

Little Rock, AR (LZK)

Los Angeles/Oxnard, CA (LOX)

Missing Data

Update URL for Bookmarking

Zoom Out to CONUS

- XML RSS Feeds**
- Warnings
  - Current
  - By State/County...
  - UV Alerts
- Observations
  - Radar
  - Satellite
  - Snow Cover
  - Surface Weather...
  - Observed Precip
- Forecasts
  - Local
  - Graphical
  - Aviation
  - Marine
  - Hurricanes
  - Severe Weather
  - Fire Weather
- Text Messages
  - By State
  - By Message Type
  - National
- Forecast Models
  - Numerical Models
  - Statistical Models...
- Climate
  - Past Weather
  - Predictions
- Weather Safety
  - Weather Radio
  - Hazard Assmt...
  - StormReady /
  - TsunamiReady
- Education/Outreach
- Information Center
- Tsunamis

[Warnings & Forecasts](#)
[Graphical Forecasts](#)
[National Maps](#)
[Radar](#)
[Water](#)
[Air Quality](#)
[Satellite](#)
[Climate](#)

[River Observations](#)
[River Forecasts](#)
[Precipitation](#)
[River Download](#)
[Other Information](#)

[Images](#)
[Download](#)
[About NWS Precip Analysis](#)
[Other Useful Information](#)
[Survey & Feedback](#)
[Regional / RFC Precip Data](#)

**Downloading Gridded Rainfall Data**

**Last Update: 05/27/2008 2220 GMT**

<b>(1) Choose Format</b>	<b>(2) Select Download</b>	<b>(3) Select Date</b>	<b>(4) Press the "Download" Button</b>
<input checked="" type="radio"/> Shapefile <input type="radio"/> netCDF	Continental U.S. & Puerto Rico Legend File	May   27   2008	<input type="button" value="Download"/>

File Name	Files Included	Size
nws_precip_20080527.tar.gz	nws_precip_20080527.shp nws_precip_20080527.shx nws_precip_20080527.dbf nws_precip_20080527.prj	Approx 0.5 to 7.0 MB

**General Information**

The precipitation data are quality-controlled, multi-sensor (radar and rain gauge) precipitation estimates obtained from National Weather Service (NWS) River Forecast Centers (RFCs). The original data are in XMRG format and projected in the Hydrologic Rainfall Analysis Project (HRAP) grid coordinate system, a polar stereographic projection true at 60°N / 105°W. Our software reads each participating RFC's XMRG file and grabs the 24-hour precipitation estimate for each HRAP grid cell.

Use the form above to download these files. Alternatively you can download a program called [wget](#) that mimics the capability. Due to increased web security, the anonymous FTP server is no longer available.





# Possible Enhancements For the Vermilion

- Adding Graphical Forecast Information
- Additional Forecast Points ex  
Carencro/Perry
- Flood Inundation maps

[www.srh.weather.gov](http://www.srh.weather.gov)