



Severe Weather Briefing

10 AM CST

Wednesday, February 8, 2023

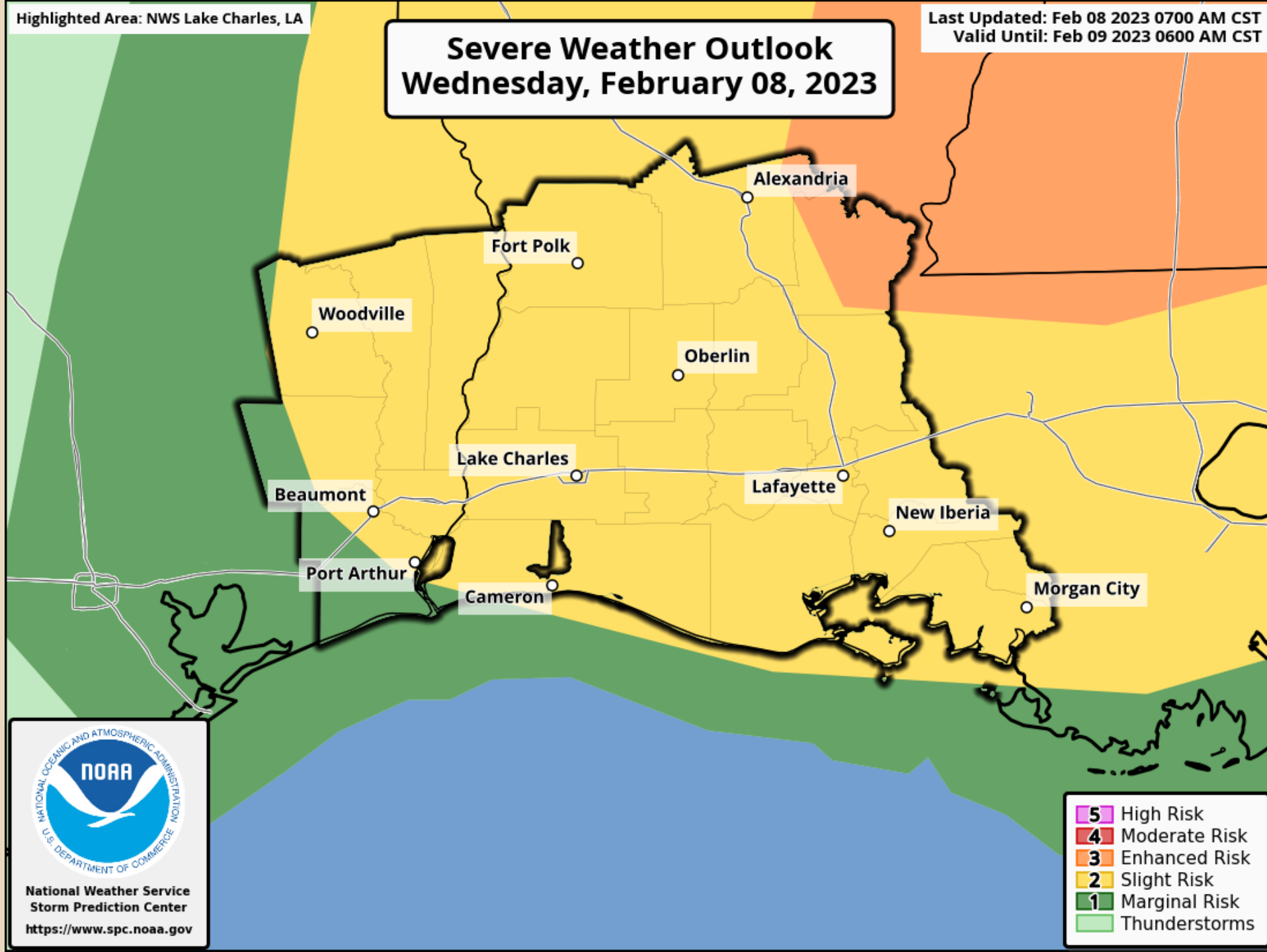
Doug Cramer, NWS Lake Charles



Highlighted Area: NWS Lake Charles, LA

Last Updated: Feb 08 2023 0700 AM CST
Valid Until: Feb 09 2023 0600 AM CST

Severe Weather Outlook Wednesday, February 08, 2023



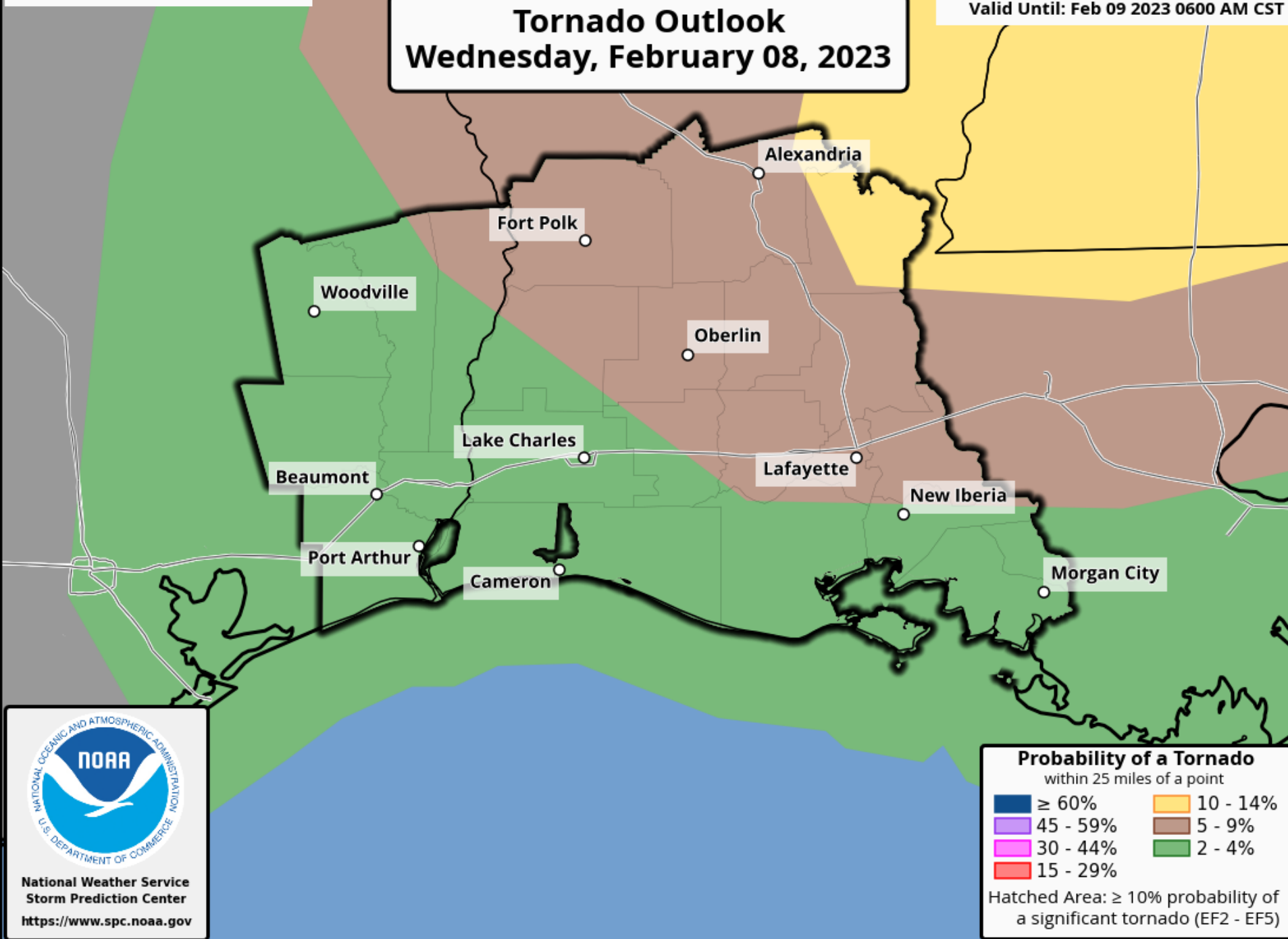
Key Message:

- Slight risk for severe weather for most of the forecast area.
- Marginal risk for severe weather in portions of southeast Texas.
- Storms expected roughly noon to 11pm.
- Main hazards will be damaging wind gust and cloud to ground lightning. However, a few tornadoes will be possible with the most intense thunderstorms.

Highlighted Area: NWS Lake Charles, LA

Last Updated: Feb 08 2023 0700 AM CST
Valid Until: Feb 09 2023 0600 AM CST

Tornado Outlook Wednesday, February 08, 2023



Key Message:

Tornado potential has increased a little.

- 10-14% risk in Avoyelles and far northeast Rapides.
- 5-9% risk northeast of a line from Holly Springs TX to New Iberia LA.
- 2-4% risk for all other areas.
- Sufficient instability and shear is likely for a few tornadoes.

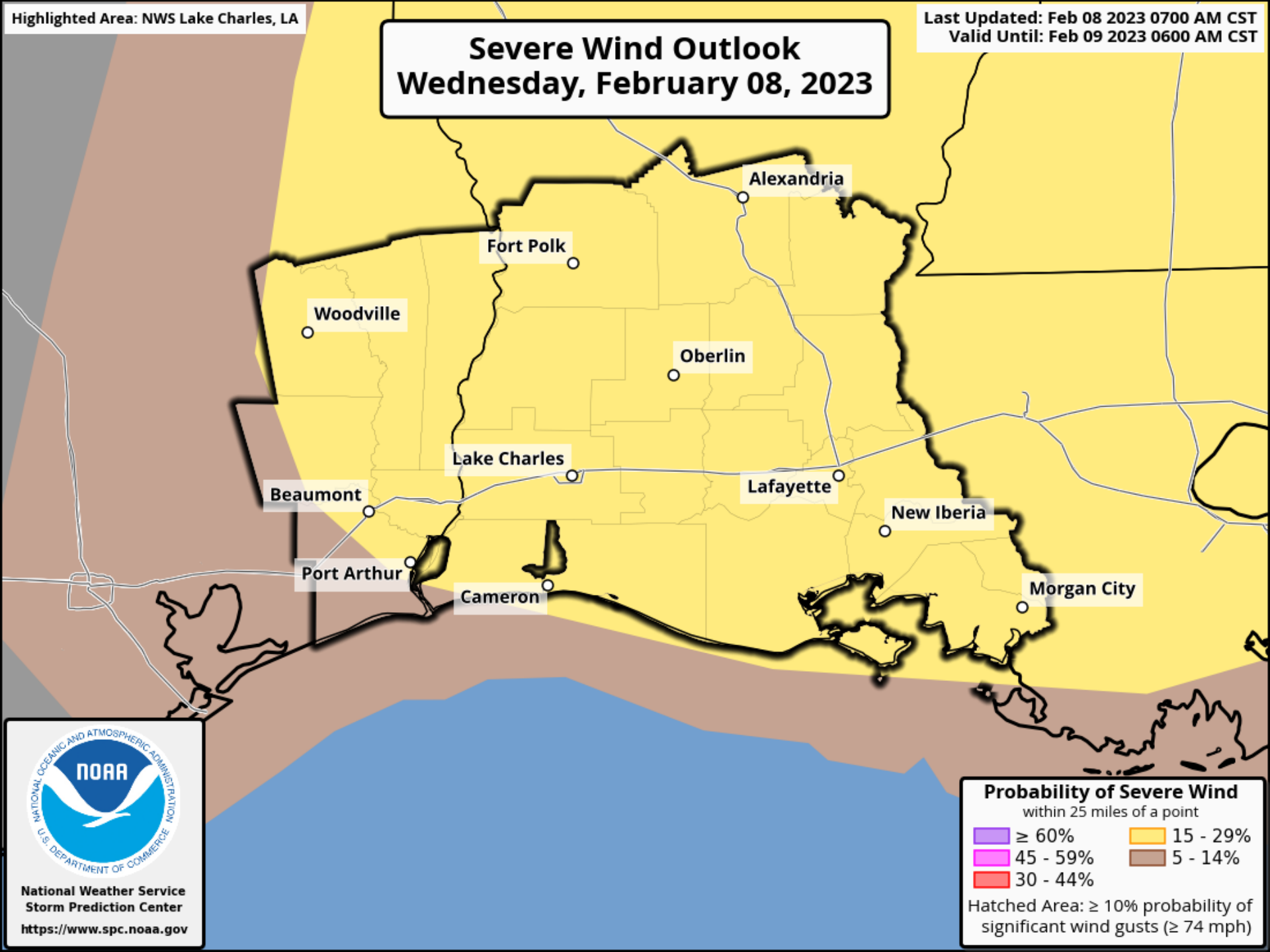


Probability of a Tornado
within 25 miles of a point

■ ≥ 60%	■ 10 - 14%
■ 45 - 59%	■ 5 - 9%
■ 30 - 44%	■ 2 - 4%
■ 15 - 29%	

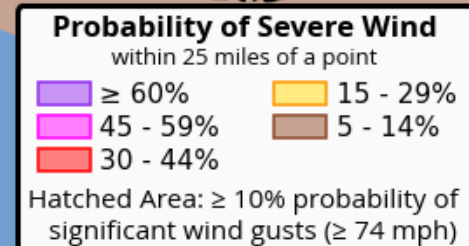
Hatched Area: ≥ 10% probability of a significant tornado (EF2 - EF5)

Severe Wind Outlook Wednesday, February 08, 2023



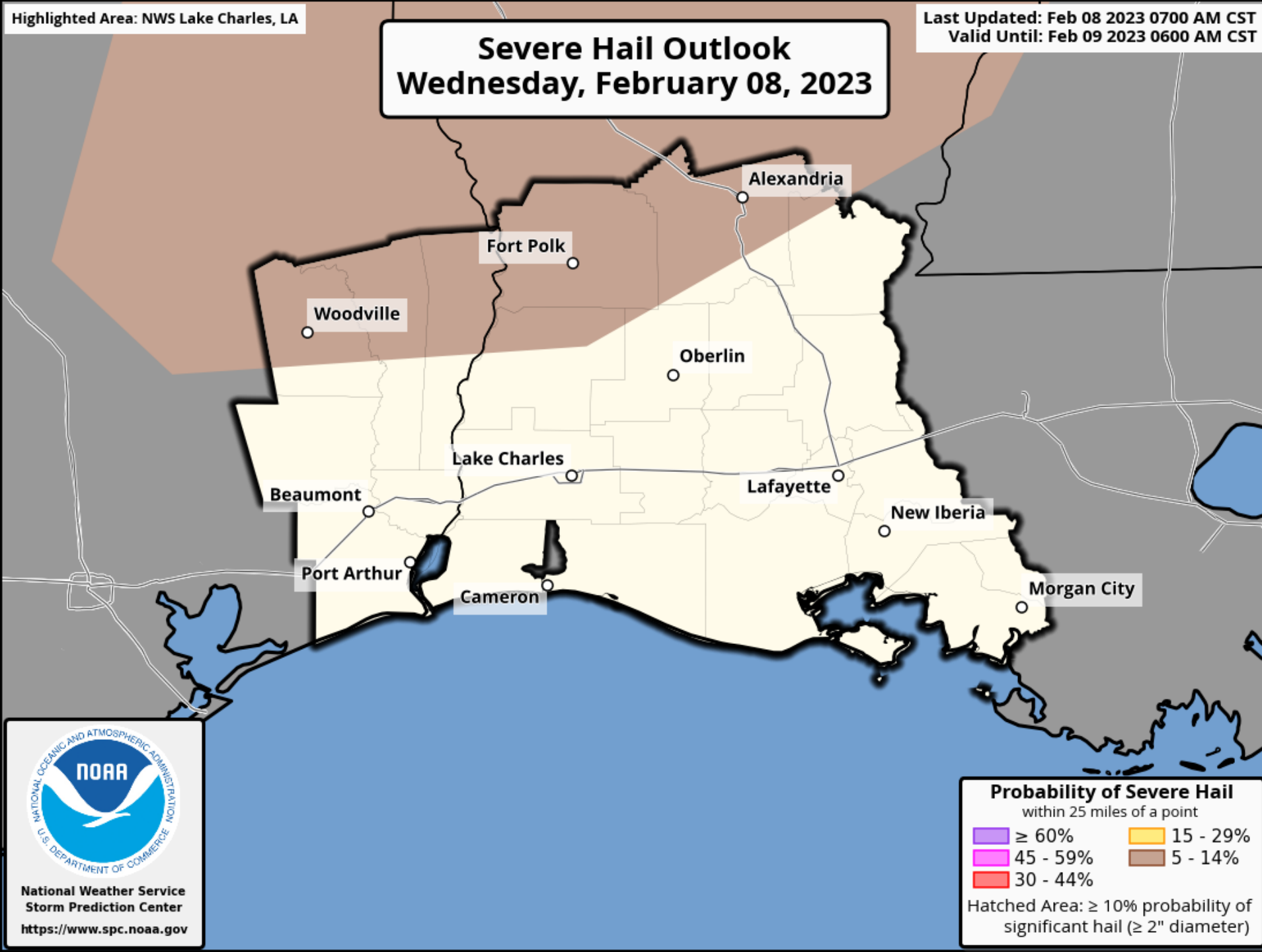
Key Message:

- Damaging wind gusts are likely, especially with line segment thunderstorms.
- 15-29% chance for most of the forecast area.
- 5-14% chance in portions of southeast Texas..



Key Message:

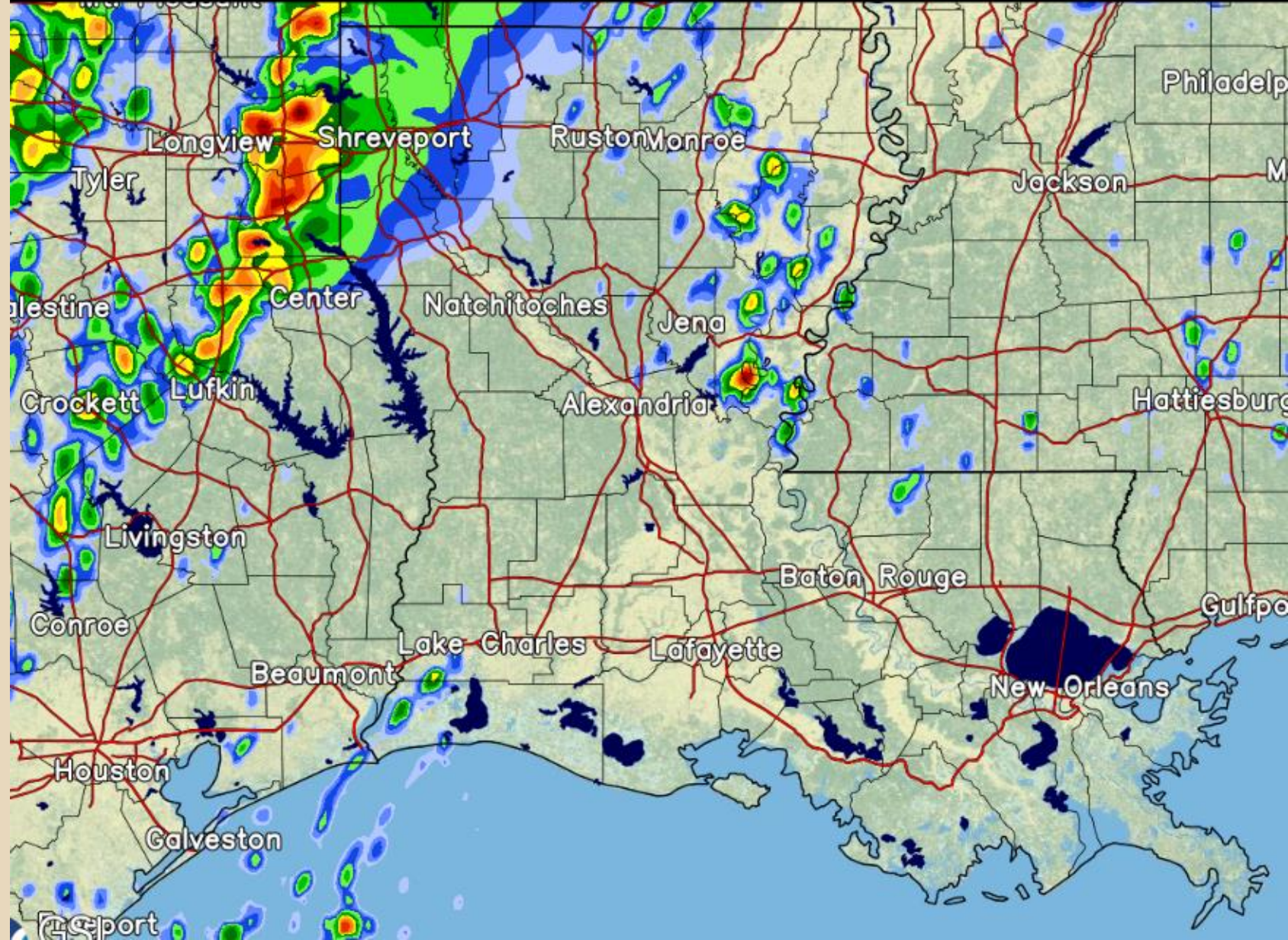
- Low chances for hail.
- 5-14% chances north of a line from Hillister TX to Marksville LA
- Less than a 5% everywhere else.





11:00 am Wed, Feb 08, 2023

Radar - Precip Intensity



Isolated Showers

30.9
Lat: 33.84
Lon: -95.82

12:00 pm Wed, Feb 08, 2023

Radar - Precip Intensity

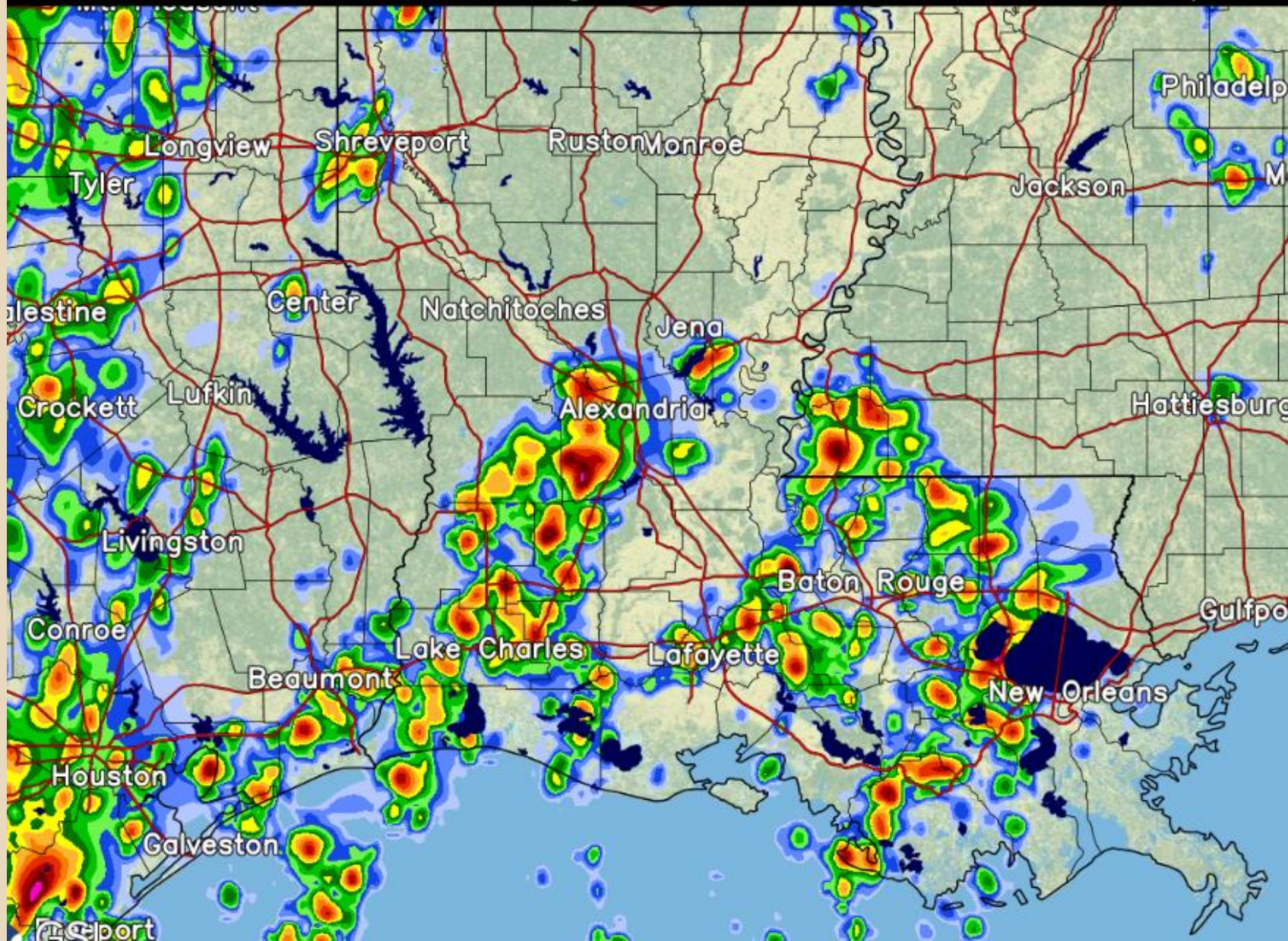


Thunderstorm
Initiation
SW LA and SE TX



2:00 pm Wed, Feb 08, 2023

Radar - Precip Intensity

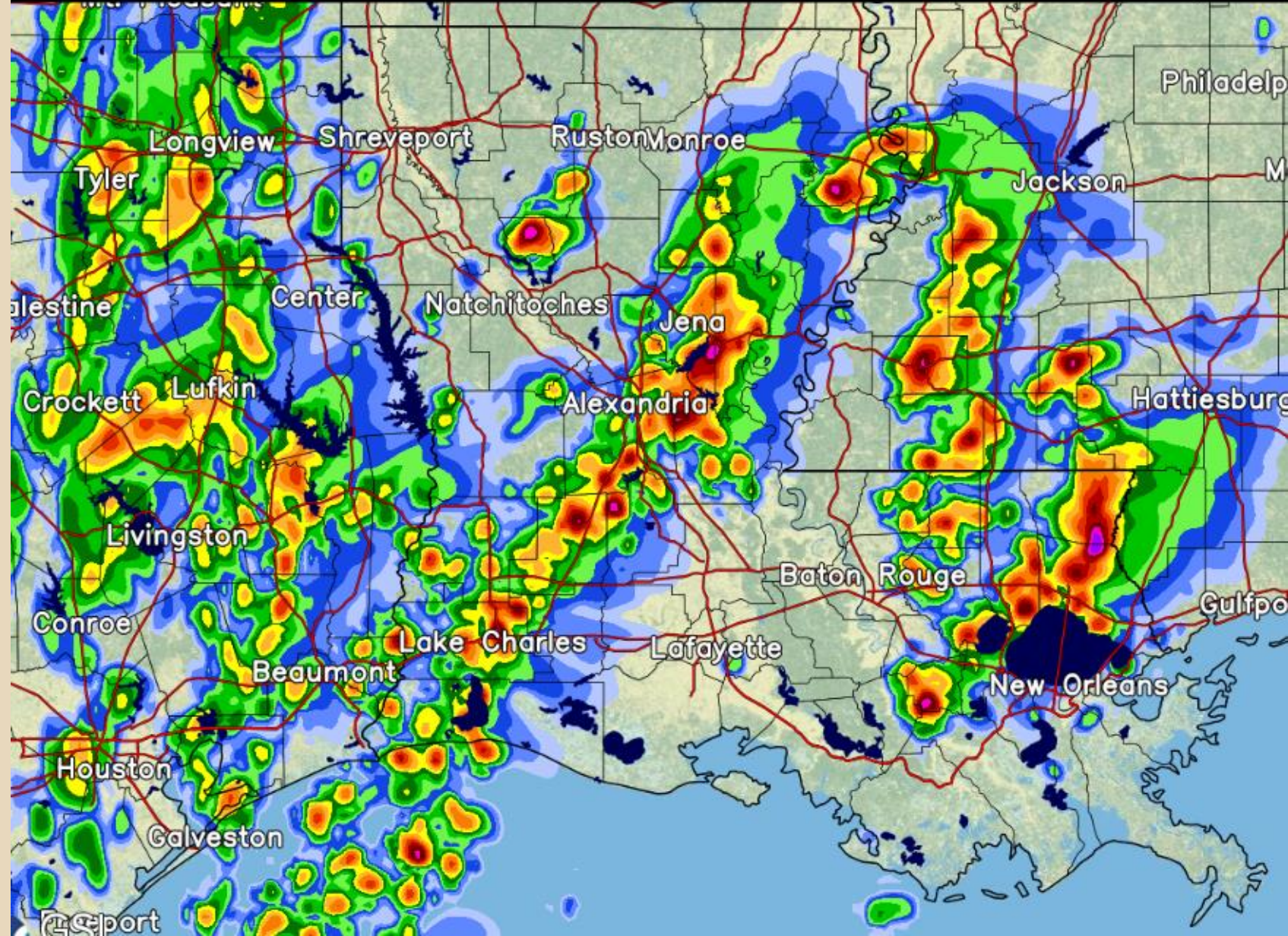


Scattered Strong to Severe Thunderstorms



4:00 pm Wed, Feb 08, 2023

Radar - Precip Intensity

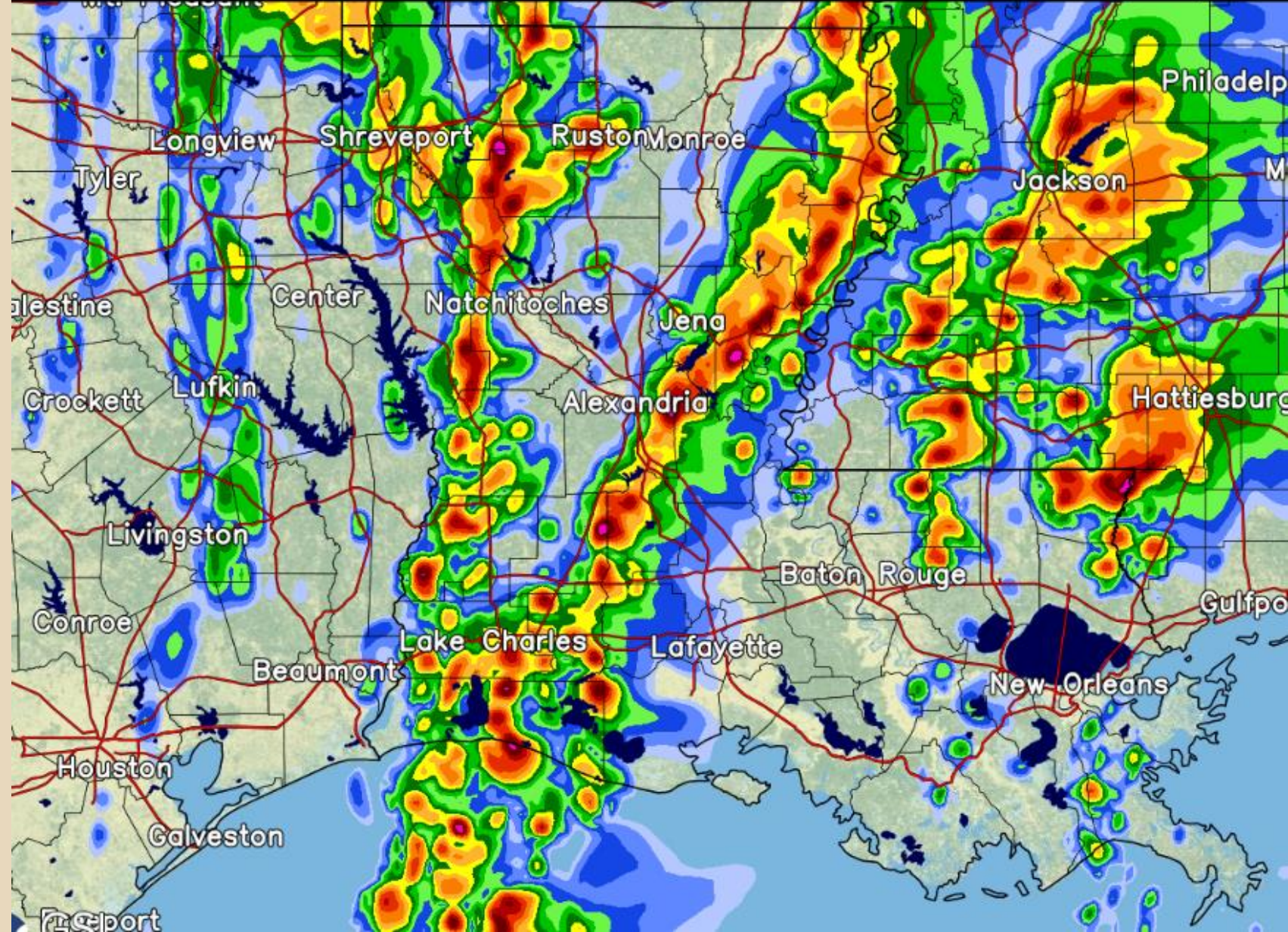


Increasing
Thunderstorm
Frequency along
Highway 165 and
West



6:00 pm Wed, Feb 08, 2023

Radar - Precip Intensity



Robust
Thunderstorms
Shifting East of the
Sabine River

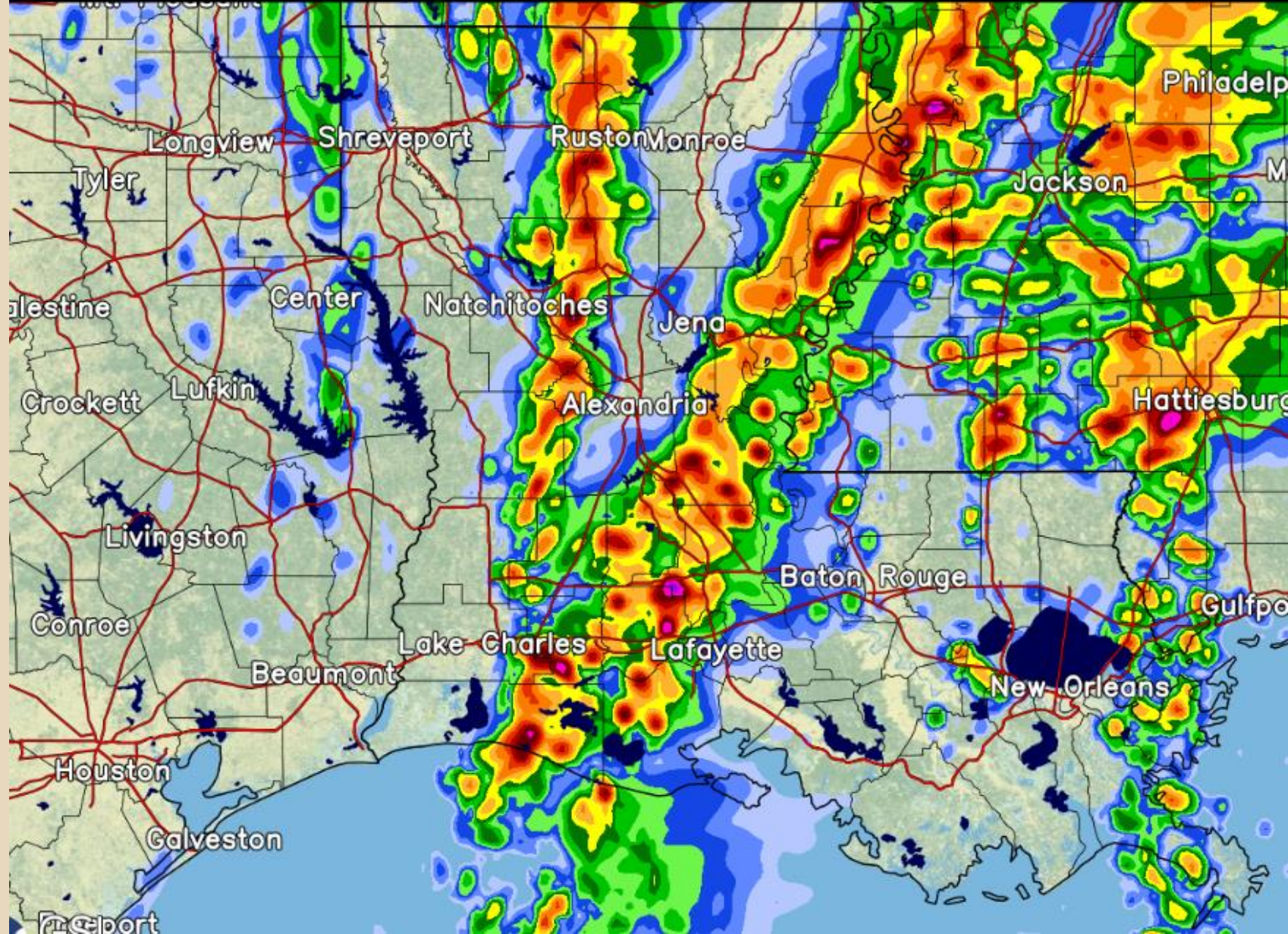


7:00 pm Wed, Feb 08, 2023

Radar - Precip Intensity

light

heavy

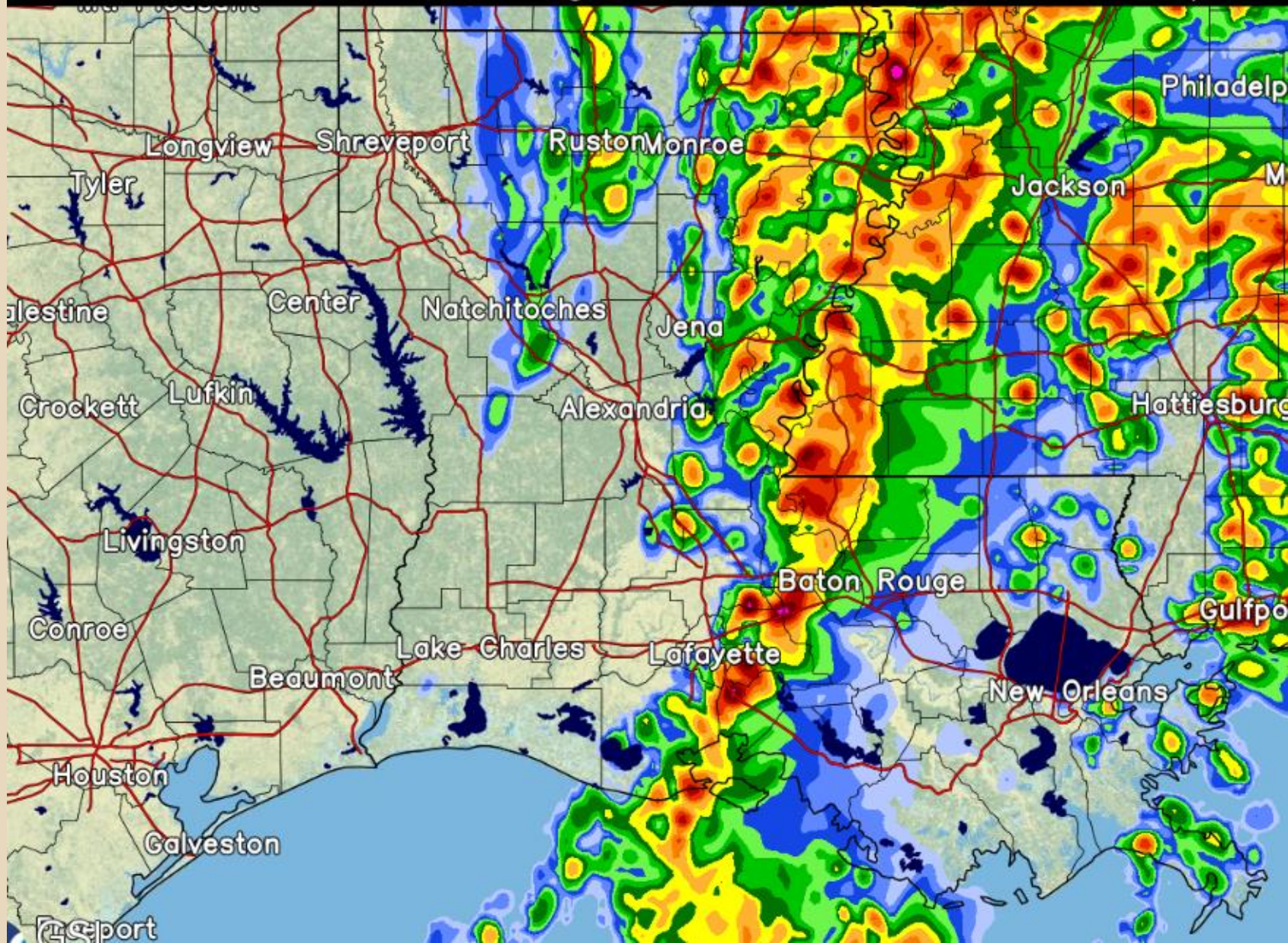


Intense
Thunderstorms Begin
to Impact
Lafayette/New Iberia
and South Central
Louisiana



9:00 pm Wed, Feb 08, 2023

Radar - Precip Intensity

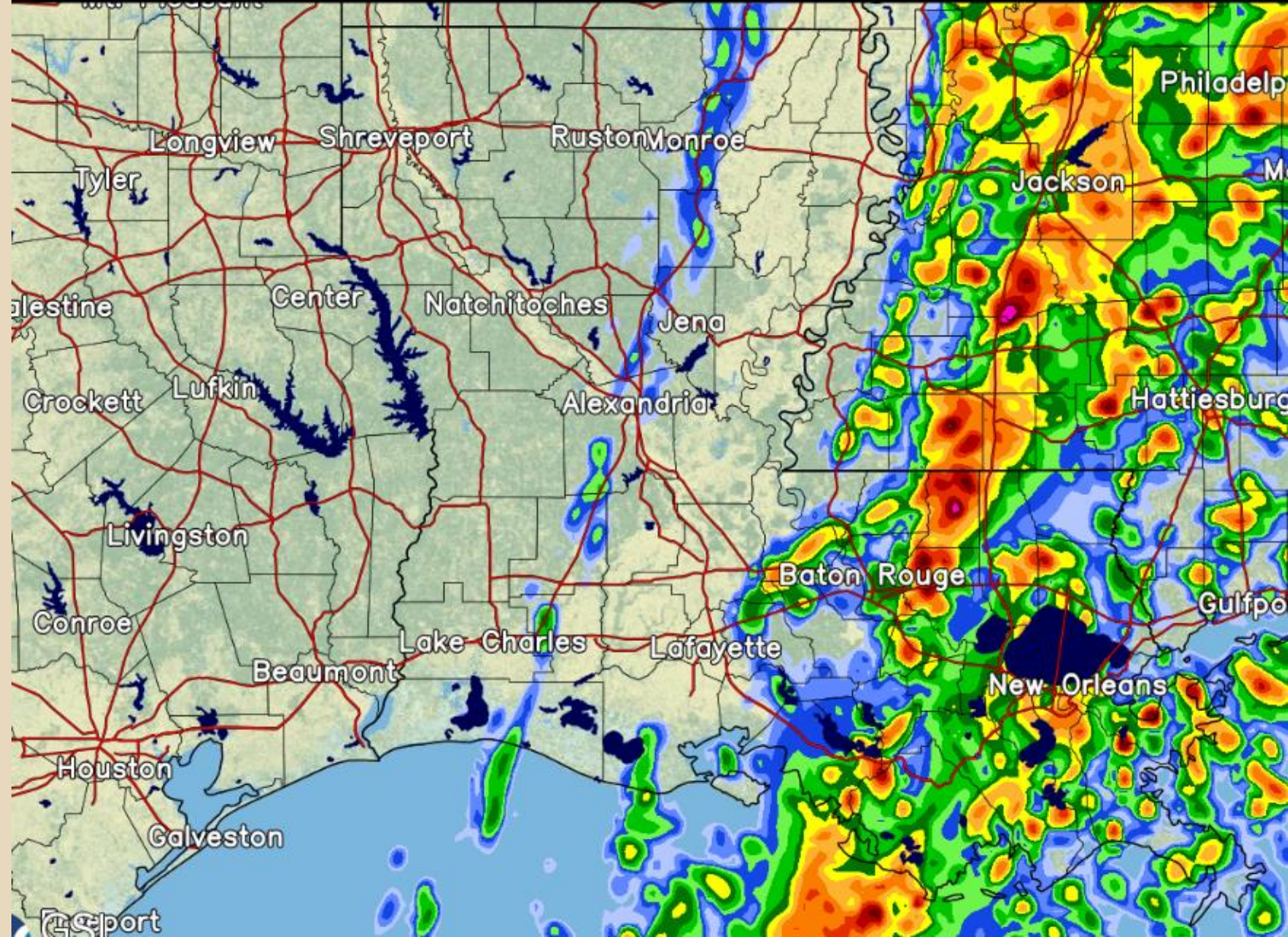


Strong to Severe
Storms Lingering
over South Central
Louisiana



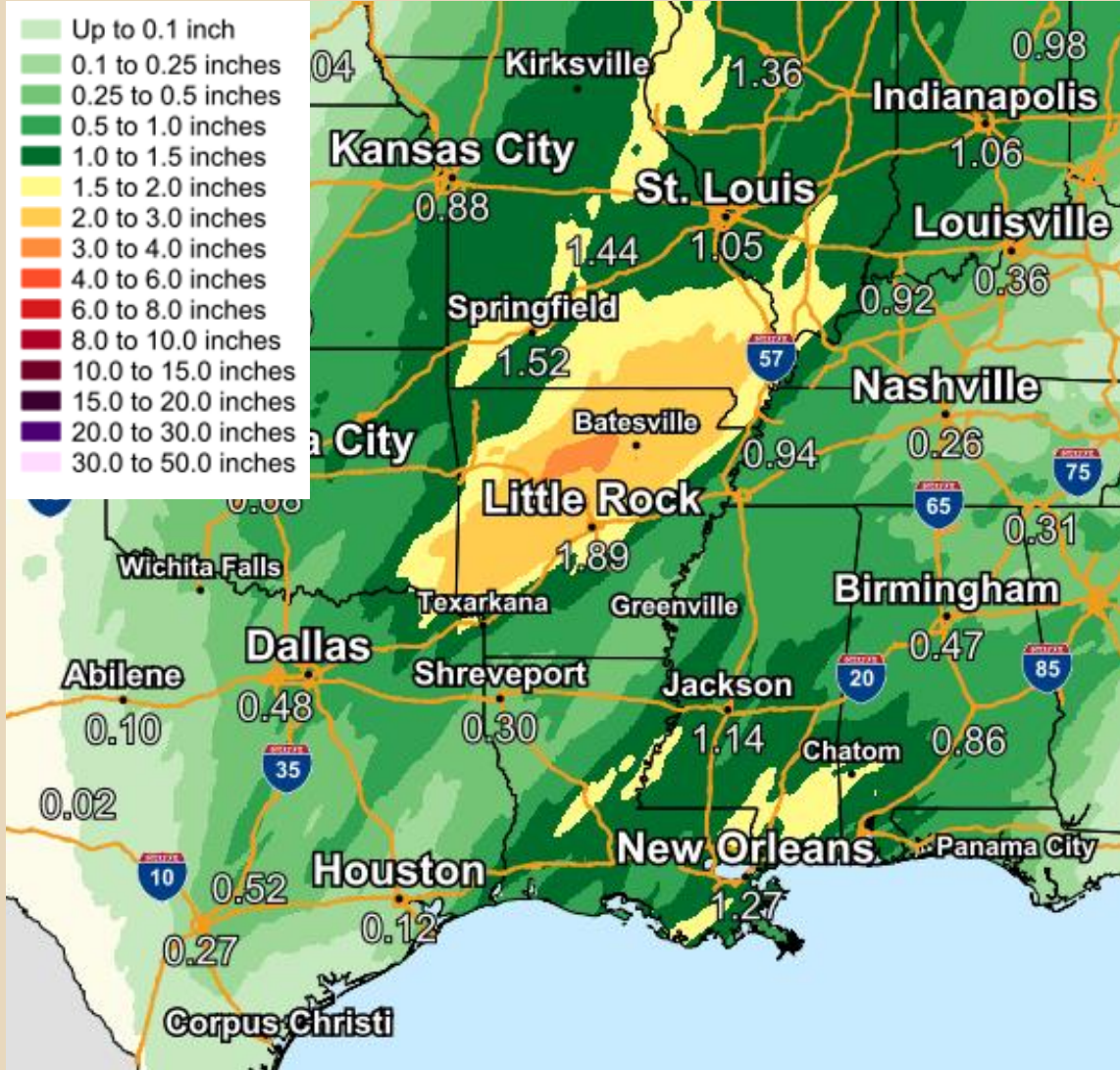
11:00 pm Wed, Feb 08, 2023

Radar - Precip Intensity

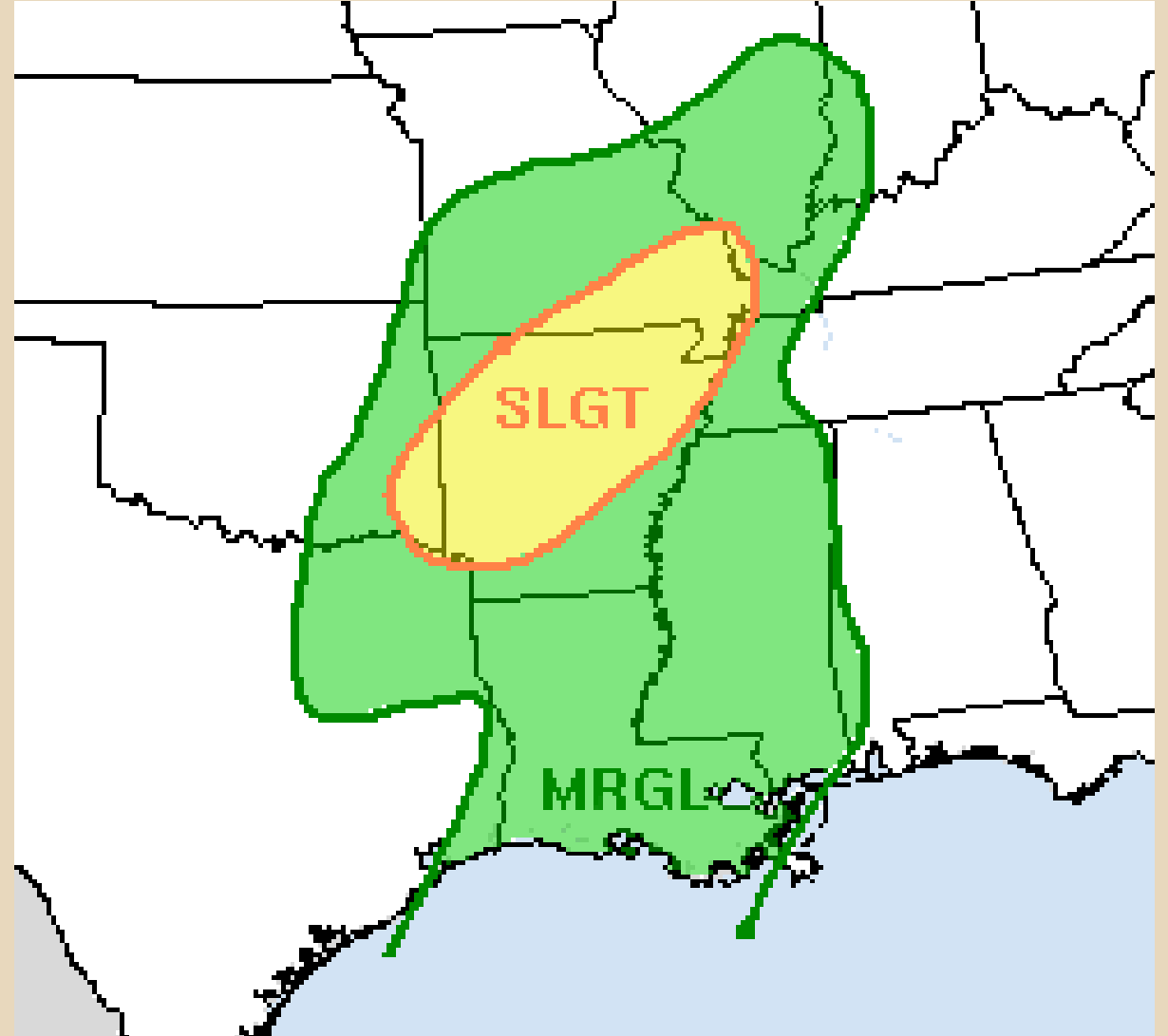


Thunderstorms Exit
to the East

Precipitation Forecast

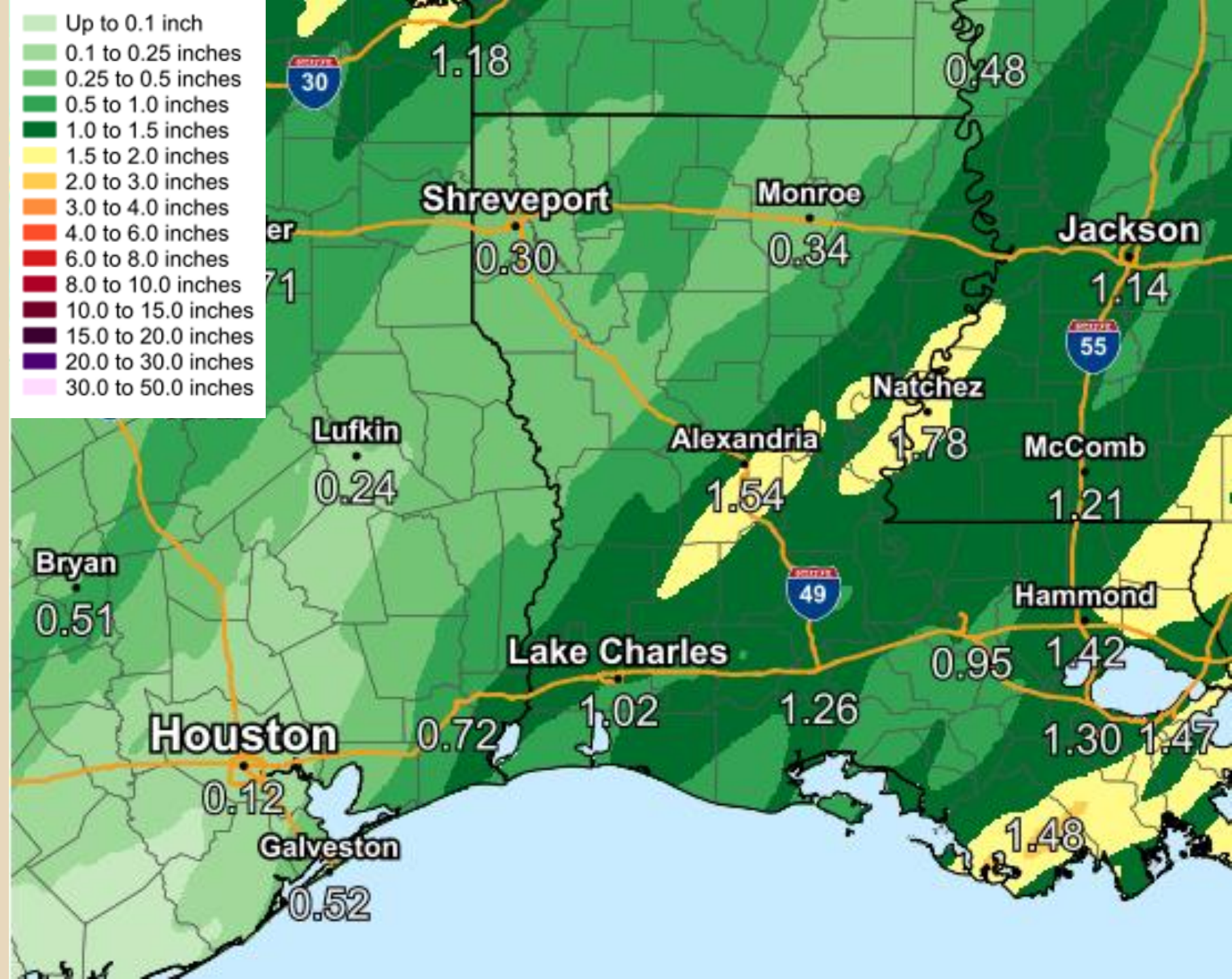







Excessive Rainfall Outlook

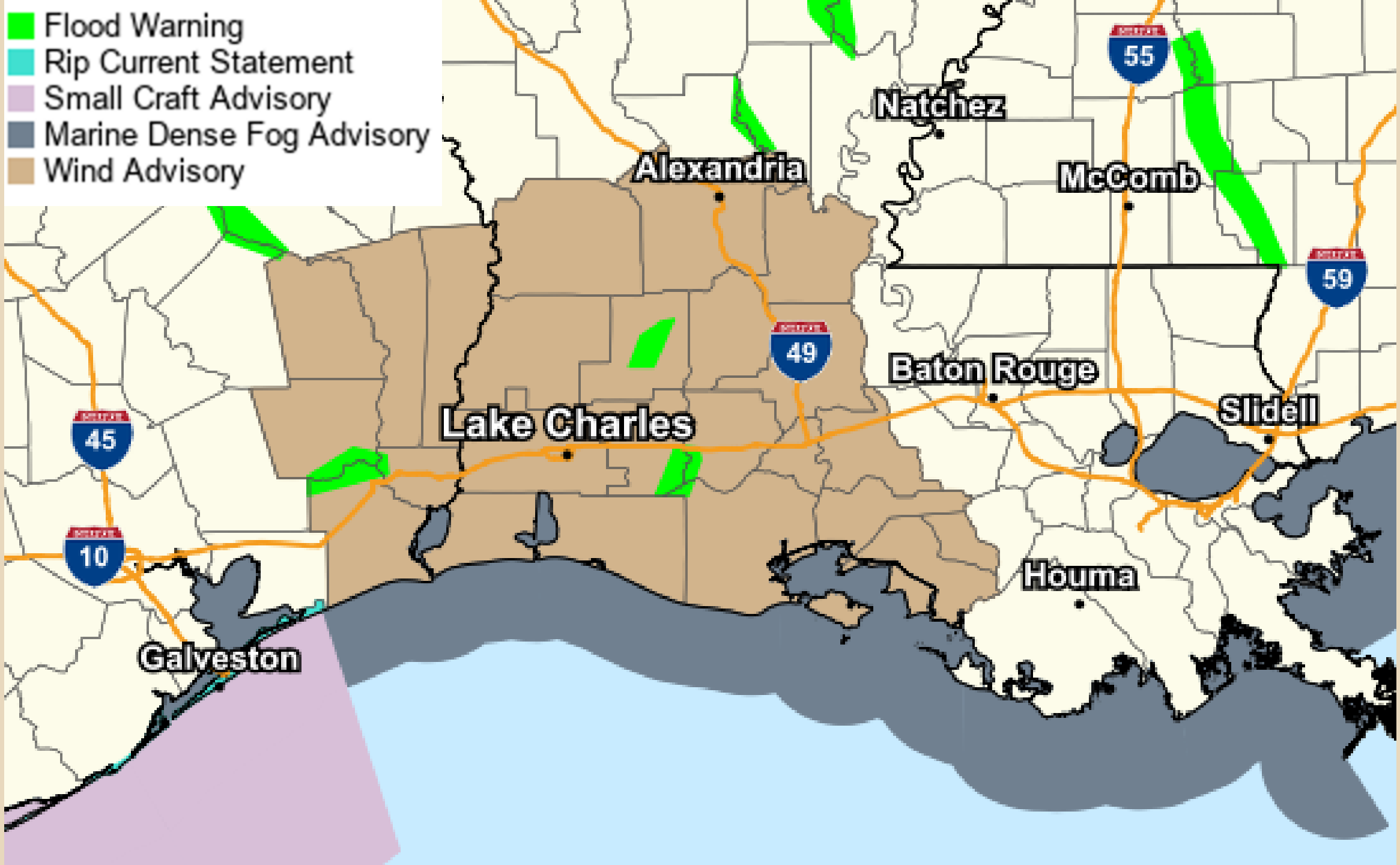


Key Message:

- Low chances for flooding.
- 0.5 to 1.50 inches of widespread rainfall expected.
- Isolated pockets exceeding 3 inches can not be ruled out.

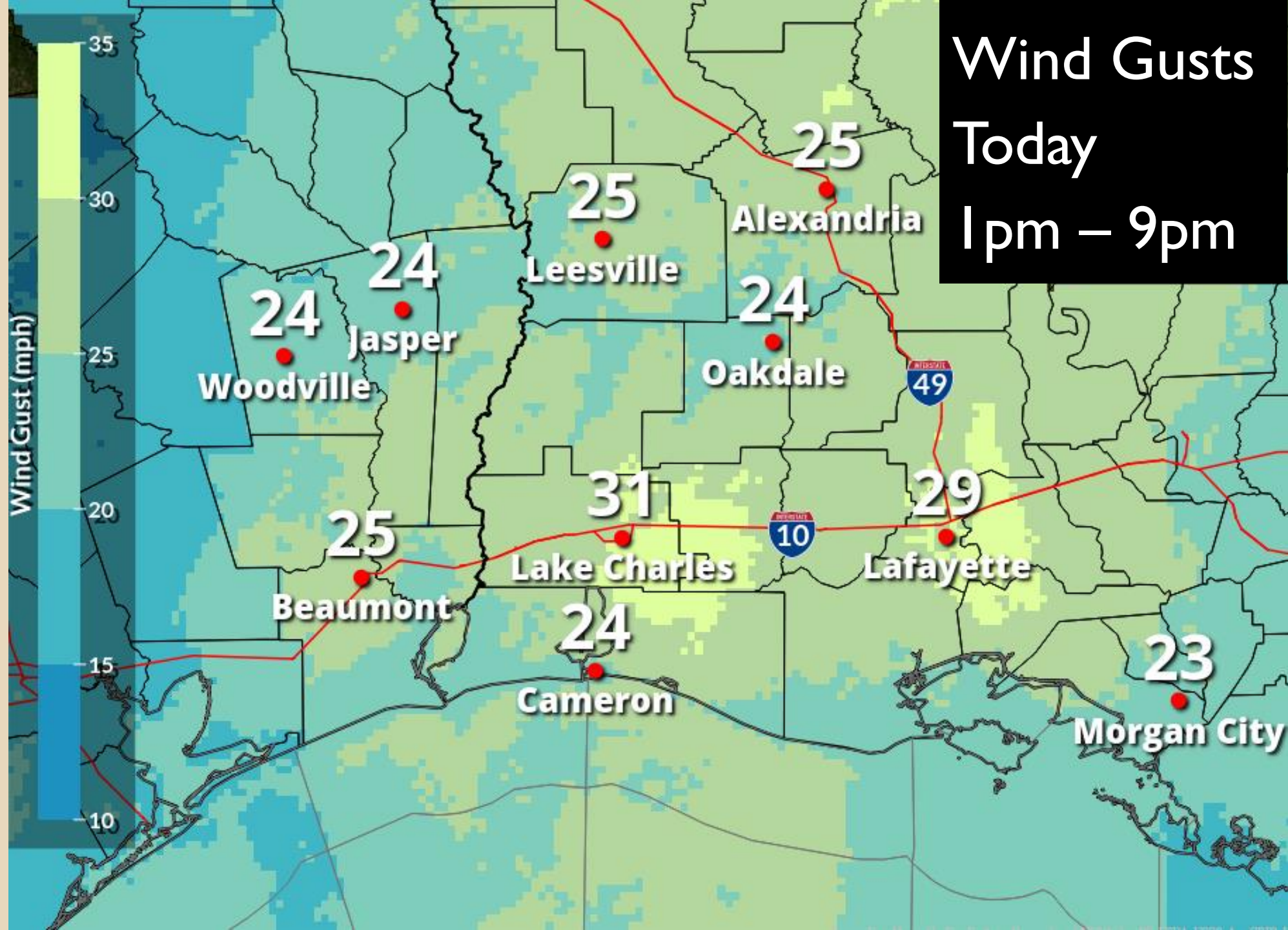


-  Flood Warning
-  Rip Current Statement
-  Small Craft Advisory
-  Marine Dense Fog Advisory
-  Wind Advisory



Key Message:

- Strong south wind gusts 20 to 35 mph this afternoon.
- Max wind gusts over marine zones ranging from 15 to 27 knots.
- Low chances for coastal flooding. Below advisory criteria.



Thursday



Sunny

High: 68 °F

Thursday
Night



Mostly Clear

Low: 45 °F

Friday



Sunny

High: 59 °F

Friday
Night



Partly Cloudy

Low: 34 °F

Saturday



Sunny

High: 54 °F

Saturday
Night



Mostly Clear

Low: 30 °F

Sunday



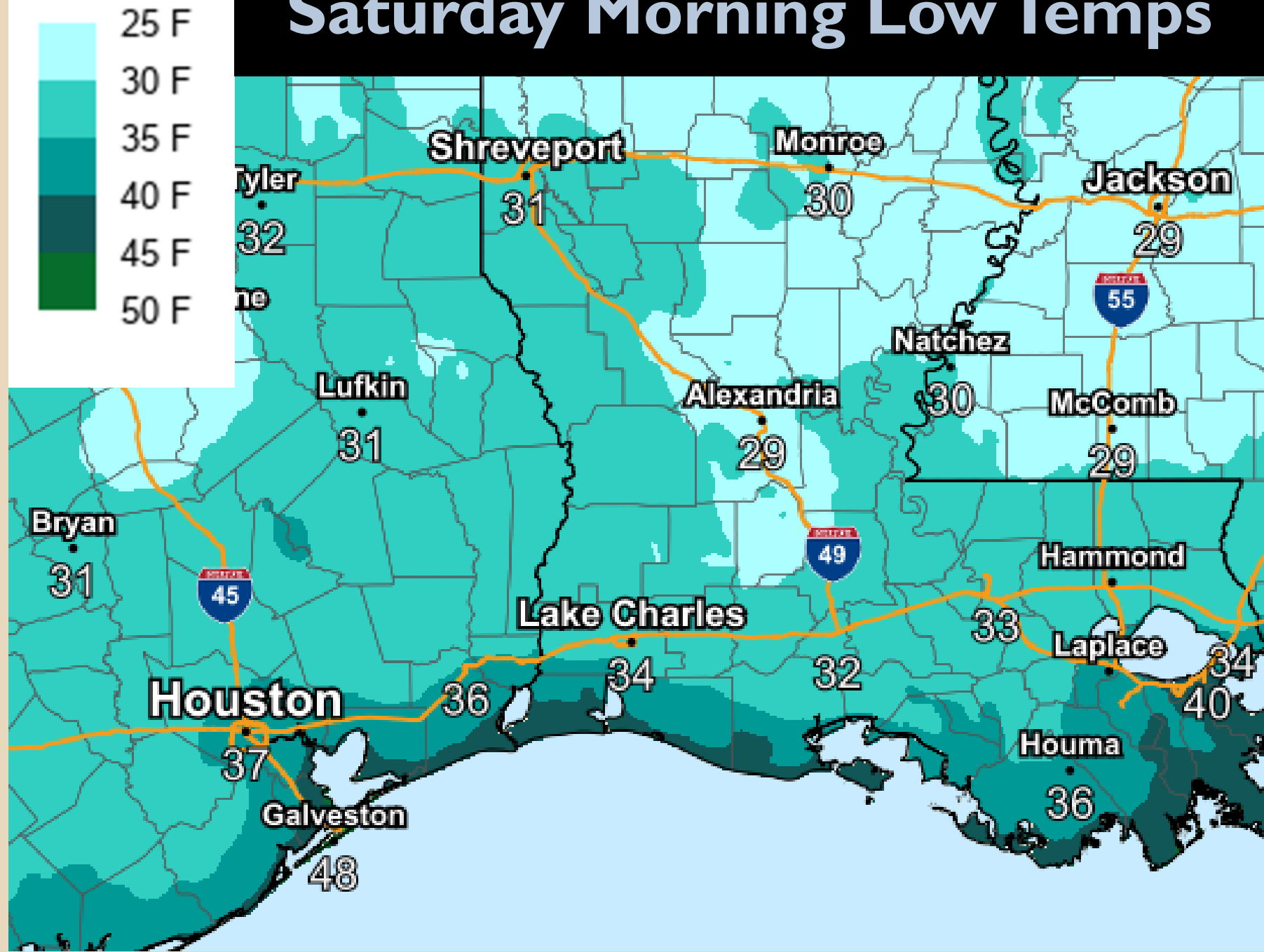
Mostly Sunny

High: 59 °F

Key Message:

- Sub-freezing temperatures expected up toward Alexandria
- Damaging hard freeze not expected
- Coastal areas expected to remain above freezing.

Saturday Morning Low Temps



If you have not updated your contact information with me within the past 5 weeks, send me an email and I'll send you a form to fill out.

doug.cramer@noaa.gov

