



Severe Weather Briefing

8:45 AM CST UPDATE
Thursday February 16th

Doug Cramer



Today

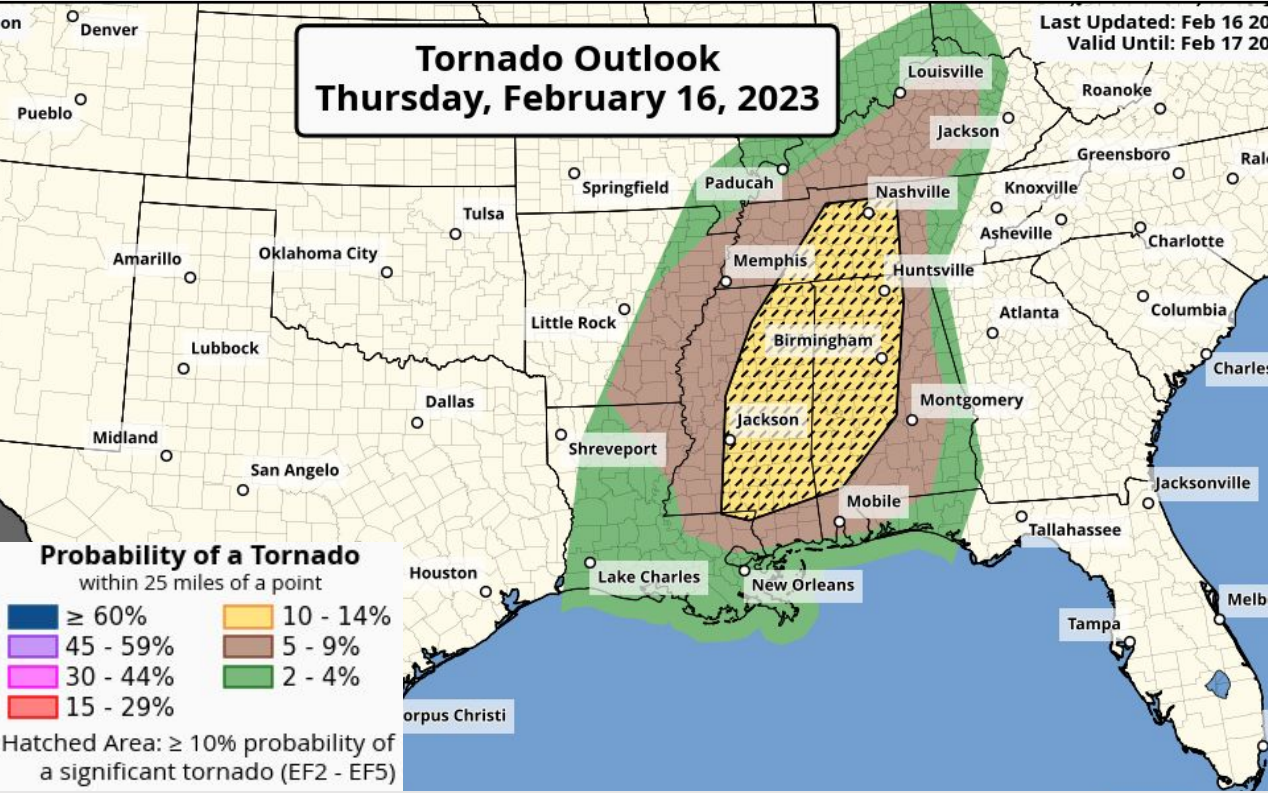
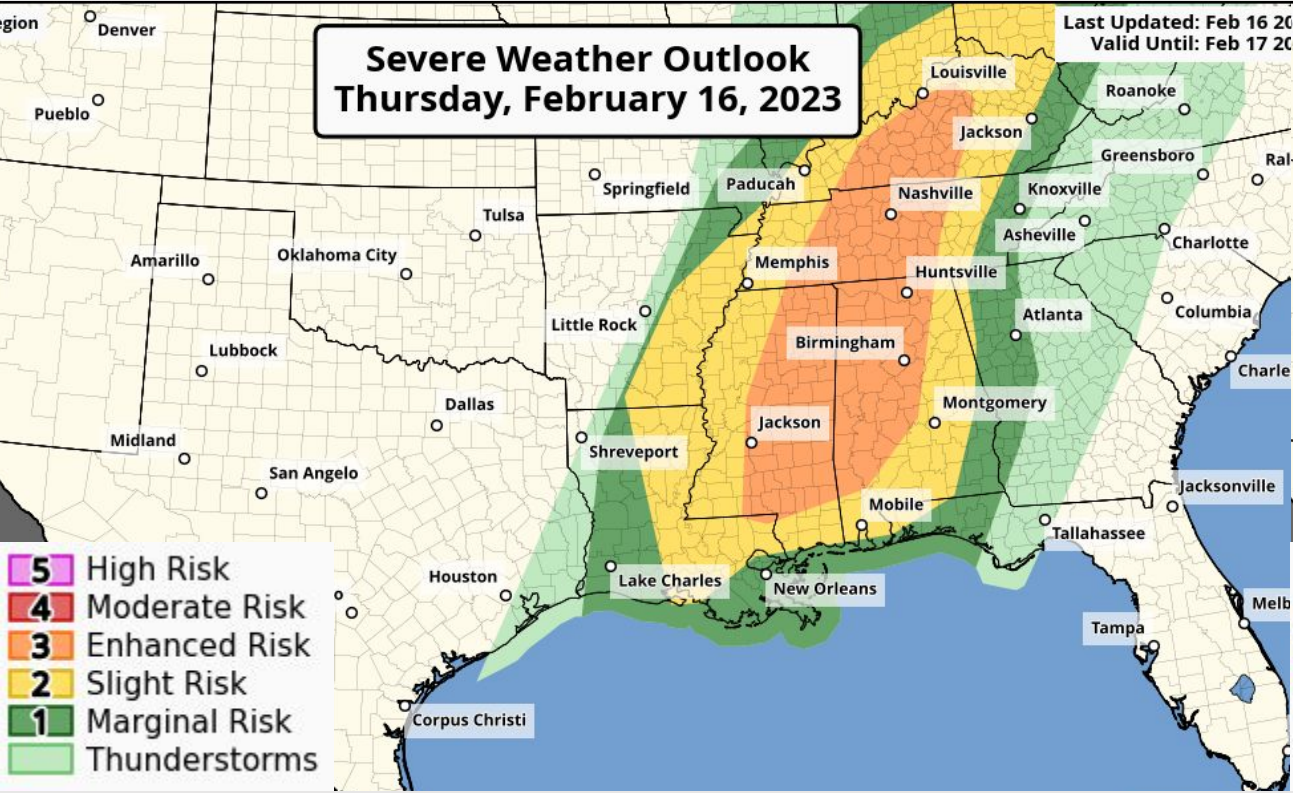
Tornado Outlook

Severe Weather Outlook
Thursday, February 16, 2023

Tornado Outlook
Thursday, February 16, 2023

Last Updated: Feb 16 2023
Valid Until: Feb 17 2023

Last Updated: Feb 16 2023
Valid Until: Feb 17 2023



- 5** High Risk
- 4** Moderate Risk
- 3** Enhanced Risk
- 2** Slight Risk
- 1** Marginal Risk
- Thunderstorms

- Probability of a Tornado**
within 25 miles of a point
- ≥ 60%
 - 45 - 59%
 - 30 - 44%
 - 15 - 29%
 - 10 - 14%
 - 5 - 9%
 - 2 - 4%
- Hatched Area: ≥ 10% probability of a significant tornado (EF2 - EF5)

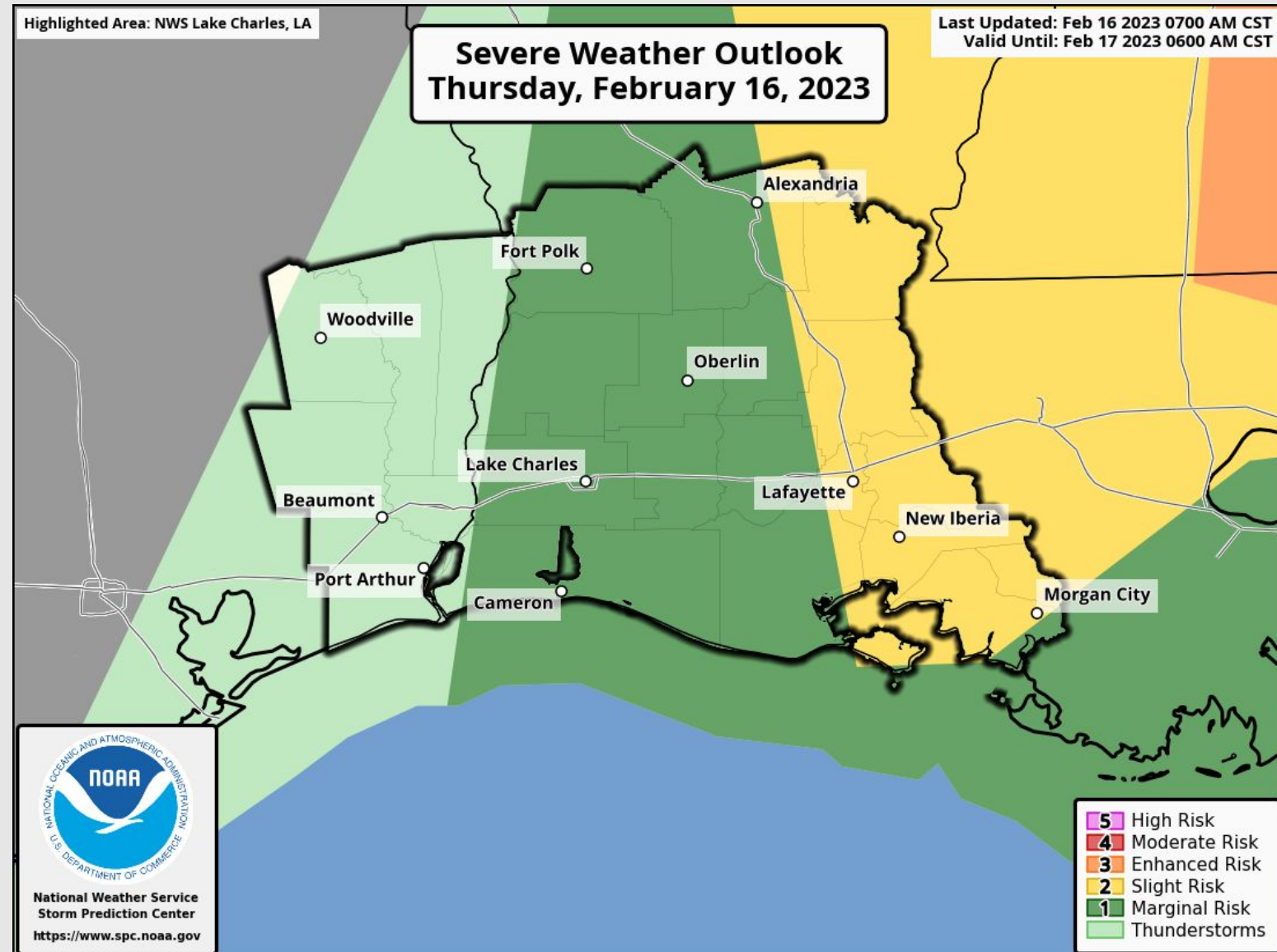


Key Message:

- Slight risk for severe along and east of I-49.
- South central Louisiana upgraded to a slight risk
- Marginal risk for severe thunderstorms east of the Sabine River toward I-49.

Timing:

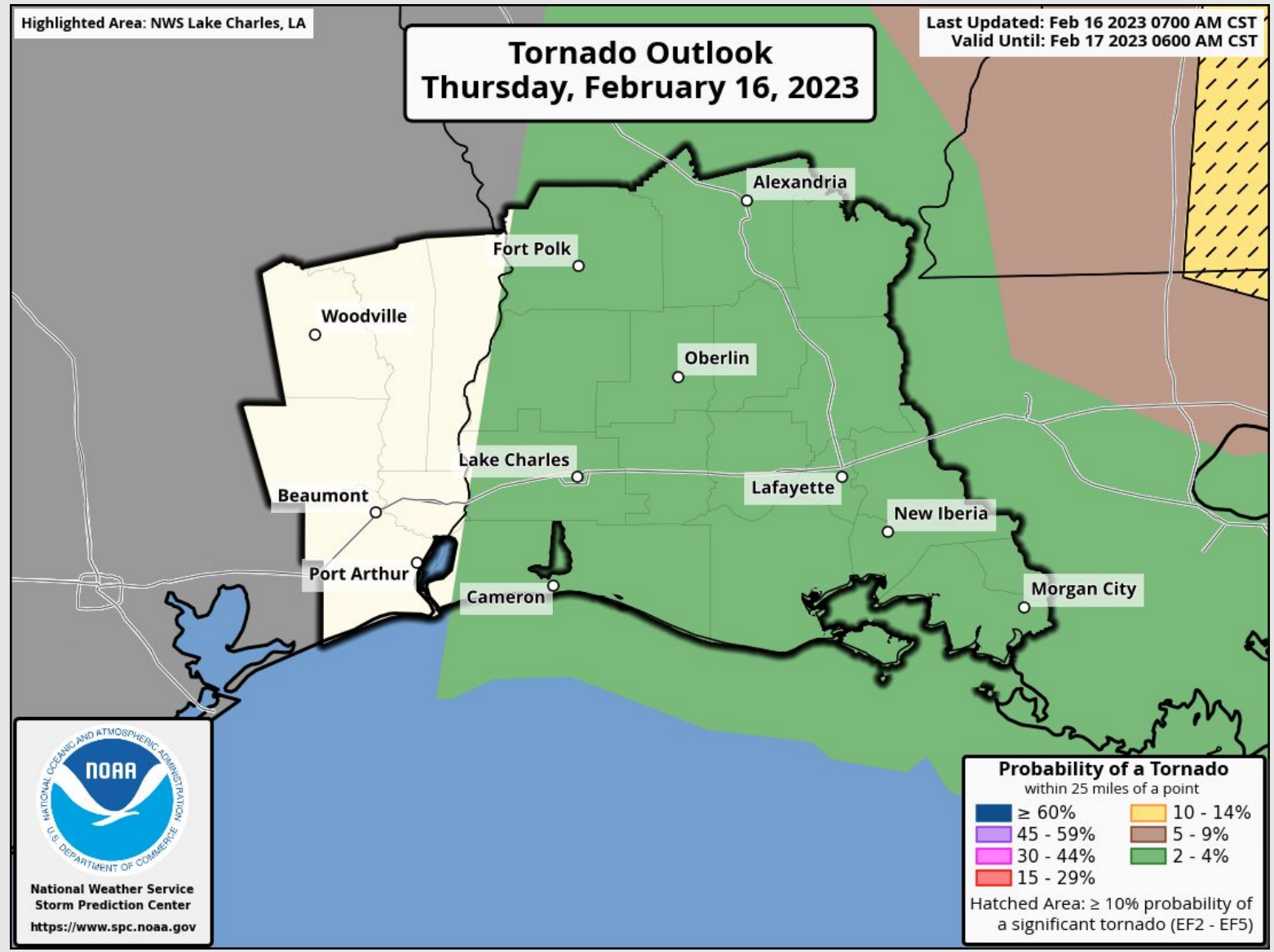
- General thunderstorms are ongoing.
- Peak Time - Late this afternoon and early evening.
- End Time - Late this evening.





Key Message:

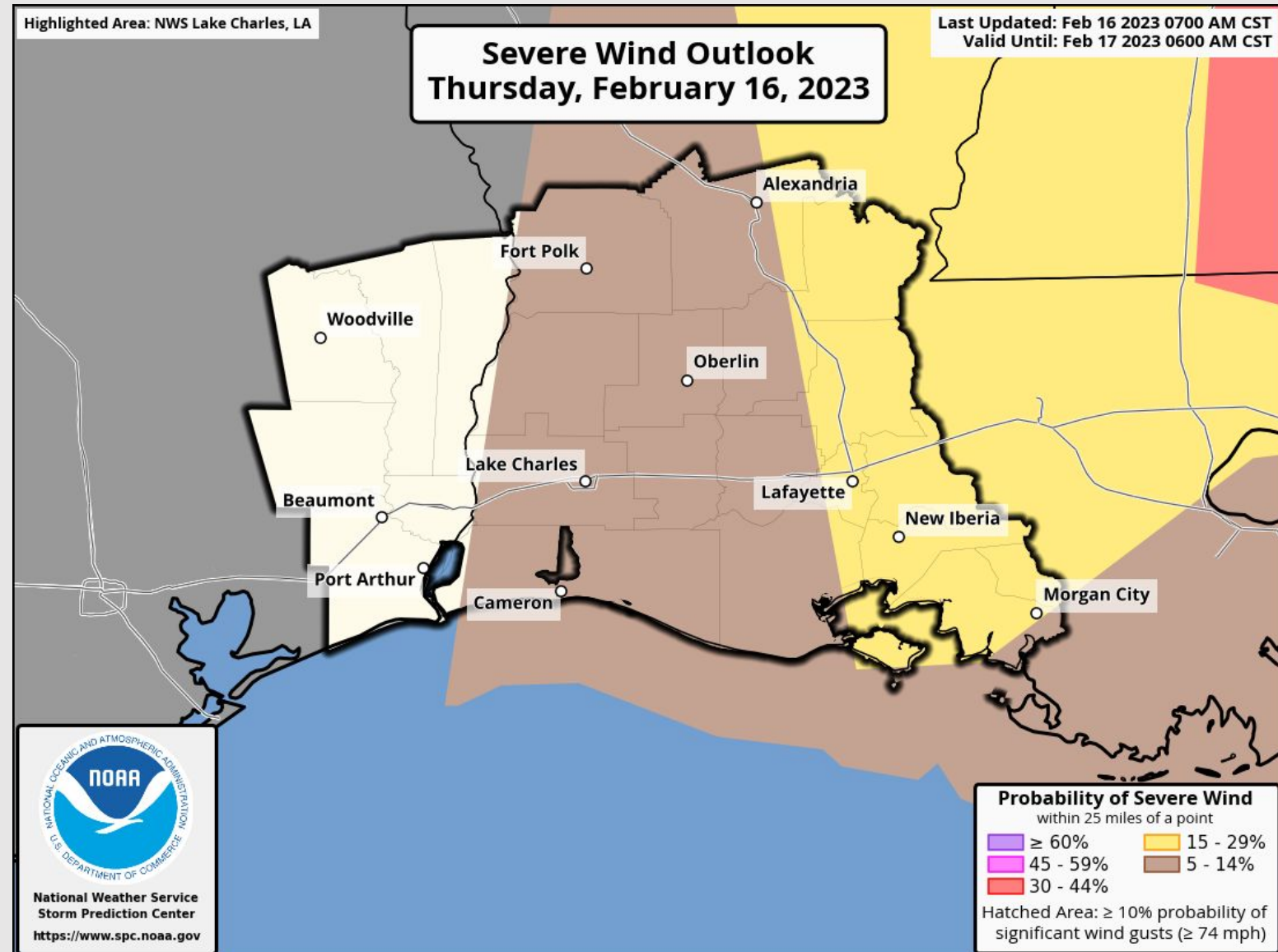
- Overall the risk for tornadoes is low
- 2 - 4% for areas east of the Sabine River.





Key Message:

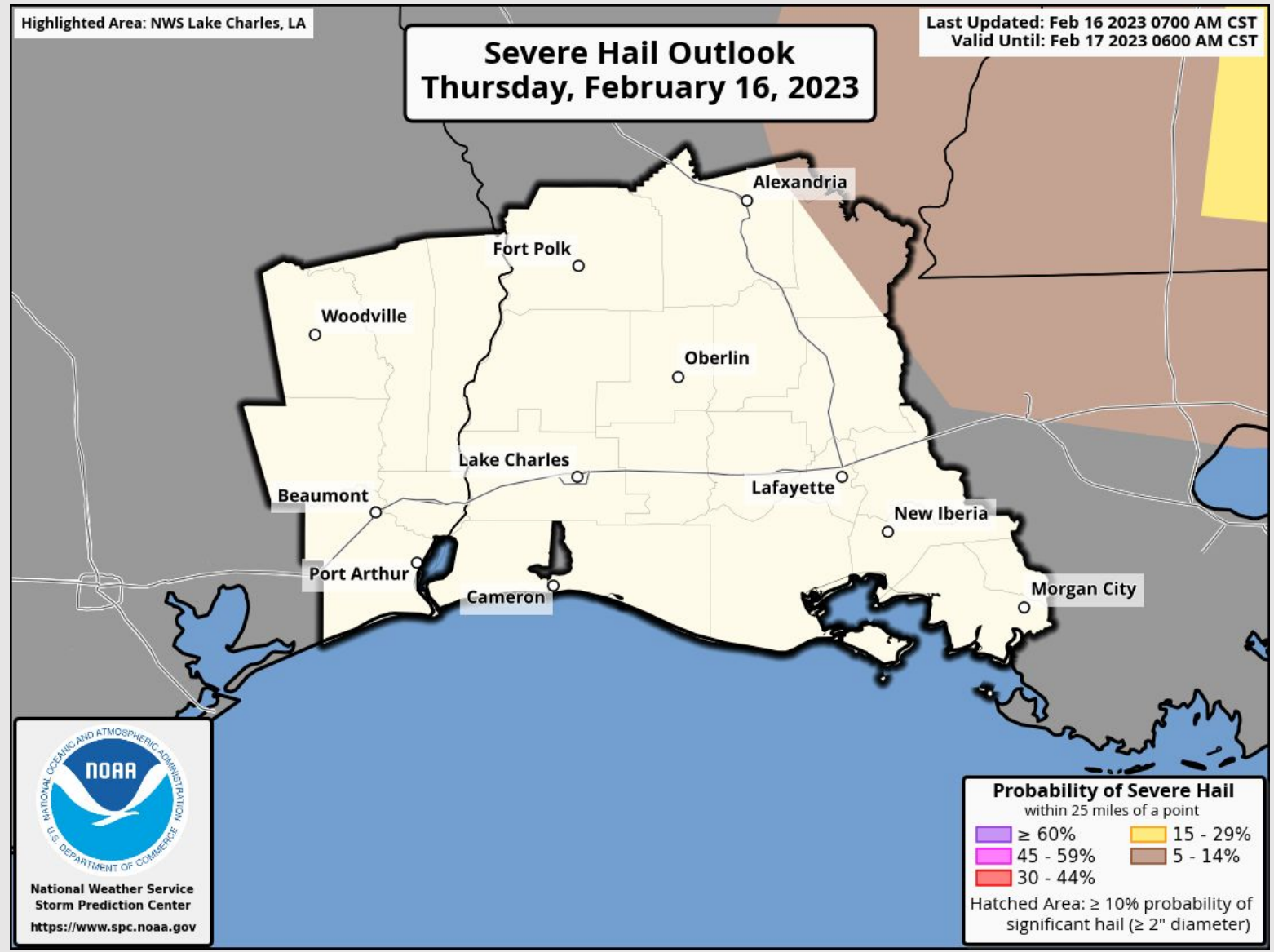
- Damaging wind gusts is the primary risk.
- 15 - 29% along and east of I-49.
- 5 - 14% east of the Sabine River toward I-49.





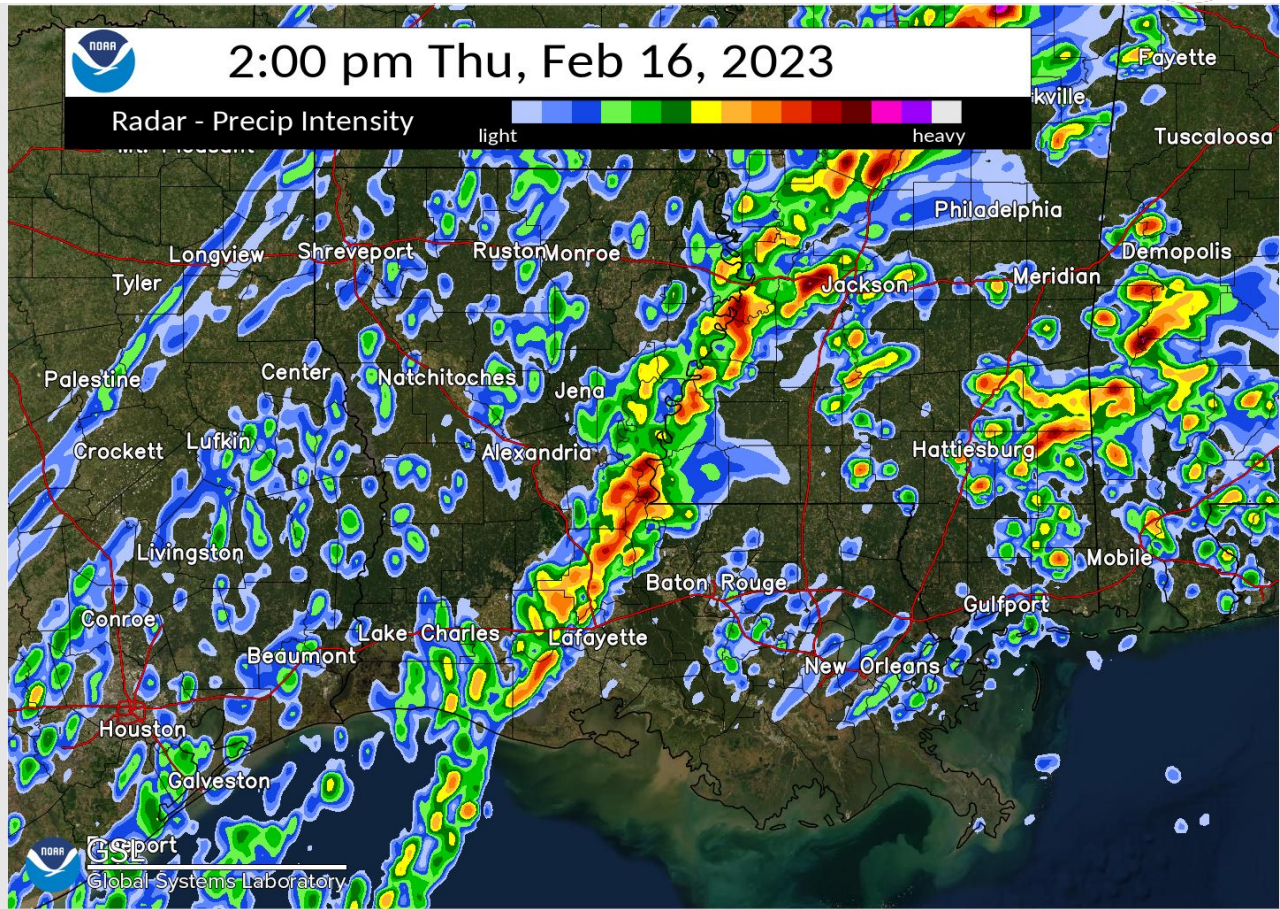
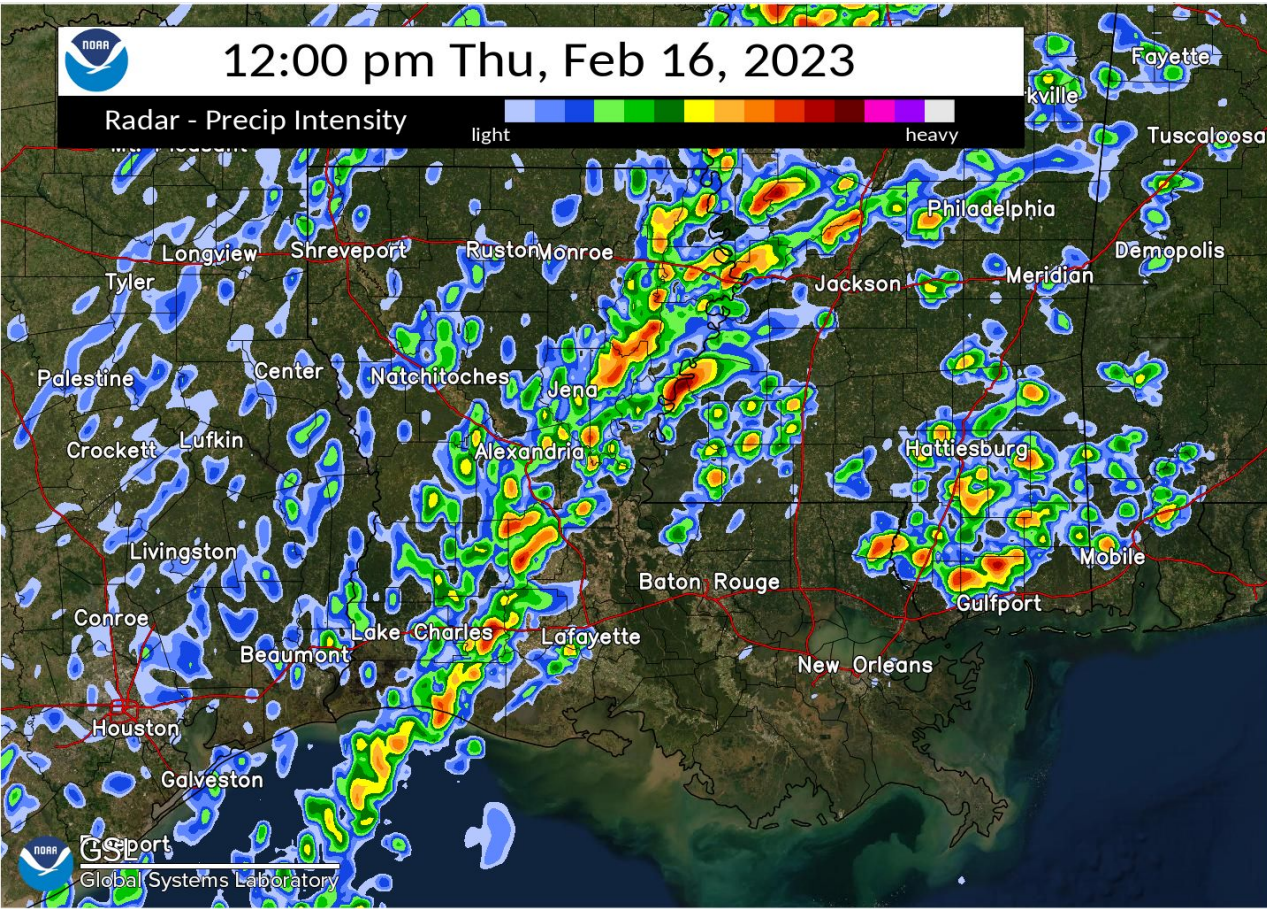
Key Message:

- Large hail risk is low.





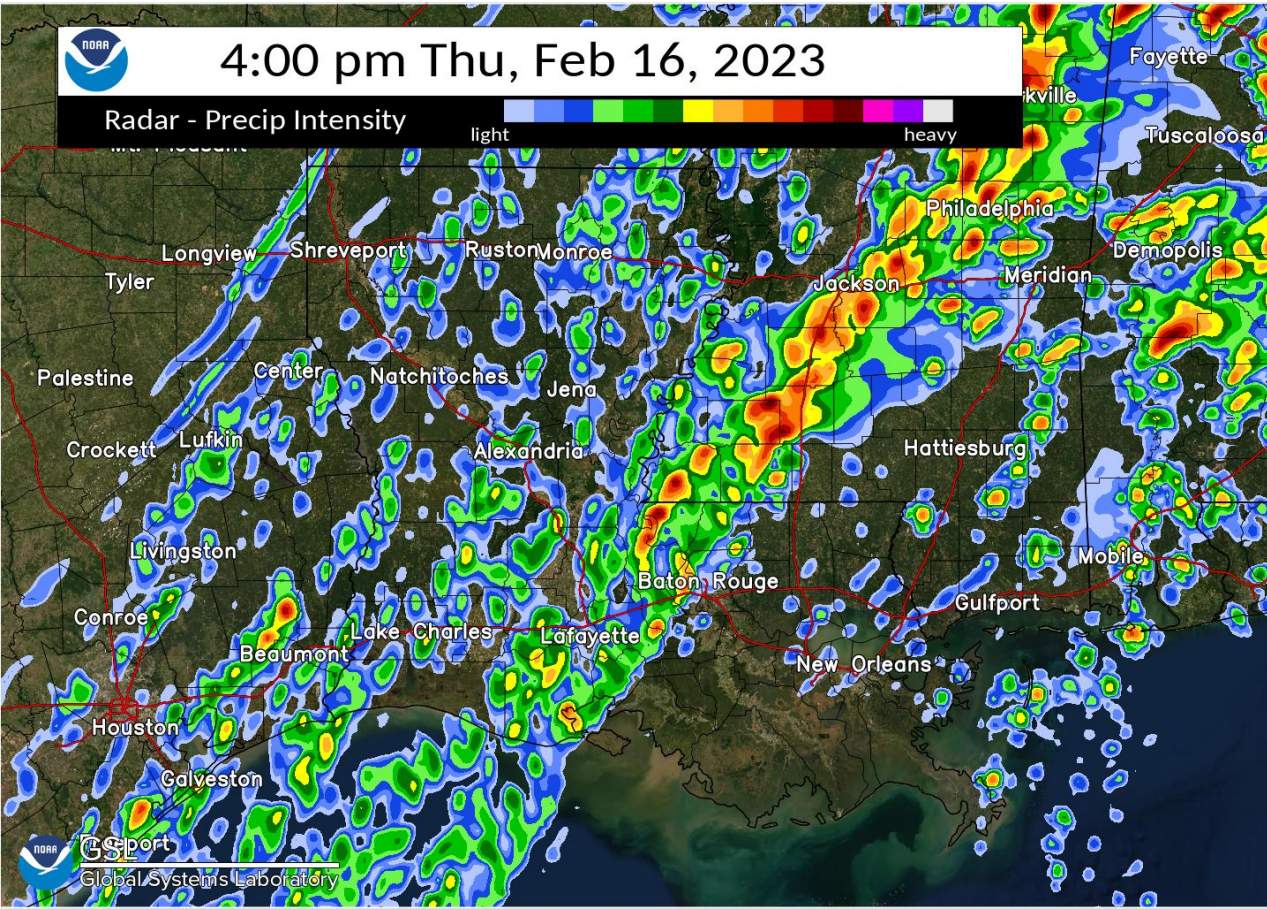
Timing: Forecasted Radar Model



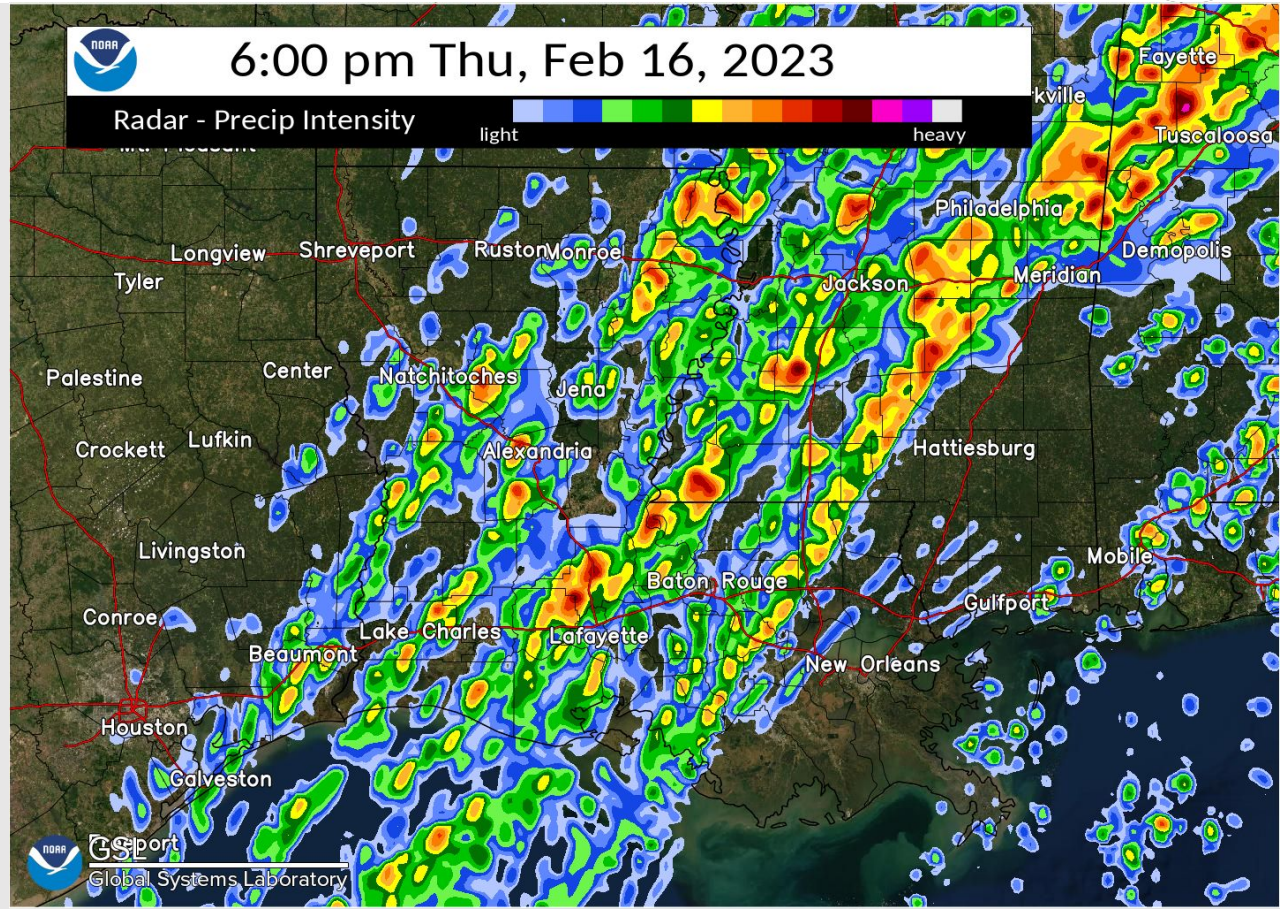
Storms begin to strengthen by mid day. A few storms east of the Sabine River could become severe.

Storm frequency gradually increases through the early afternoon

Building a Weather-Ready Nation



Scattered to numerous storms late afternoon. Severe risk continues east of the Sabine River.

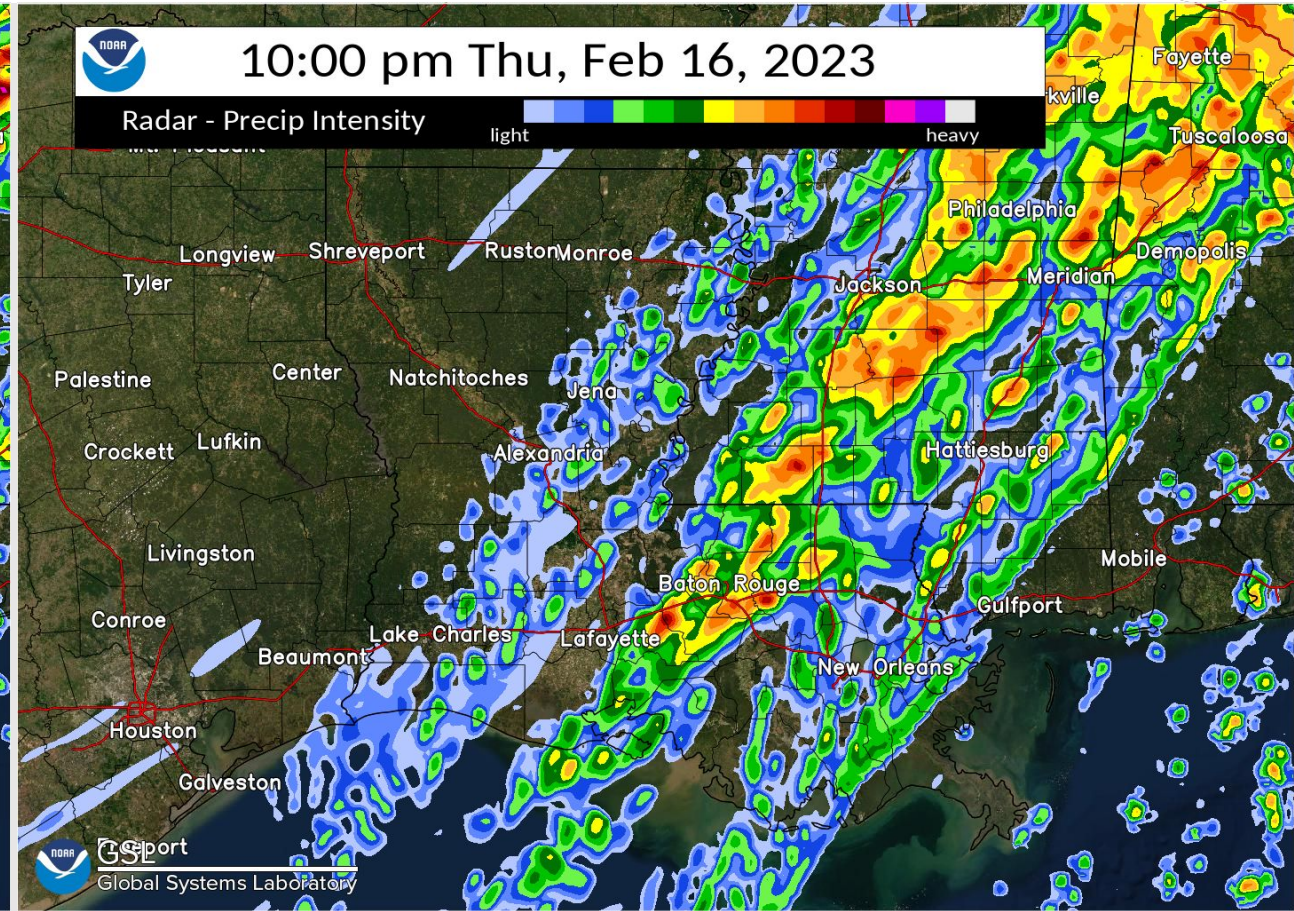


Late afternoon to early evening could be the peak of the event.

Building a Weather-Ready Nation



Approaching the middle evening hours, storms will be mainly confined to south central Louisiana. A few of these storms could be severe.

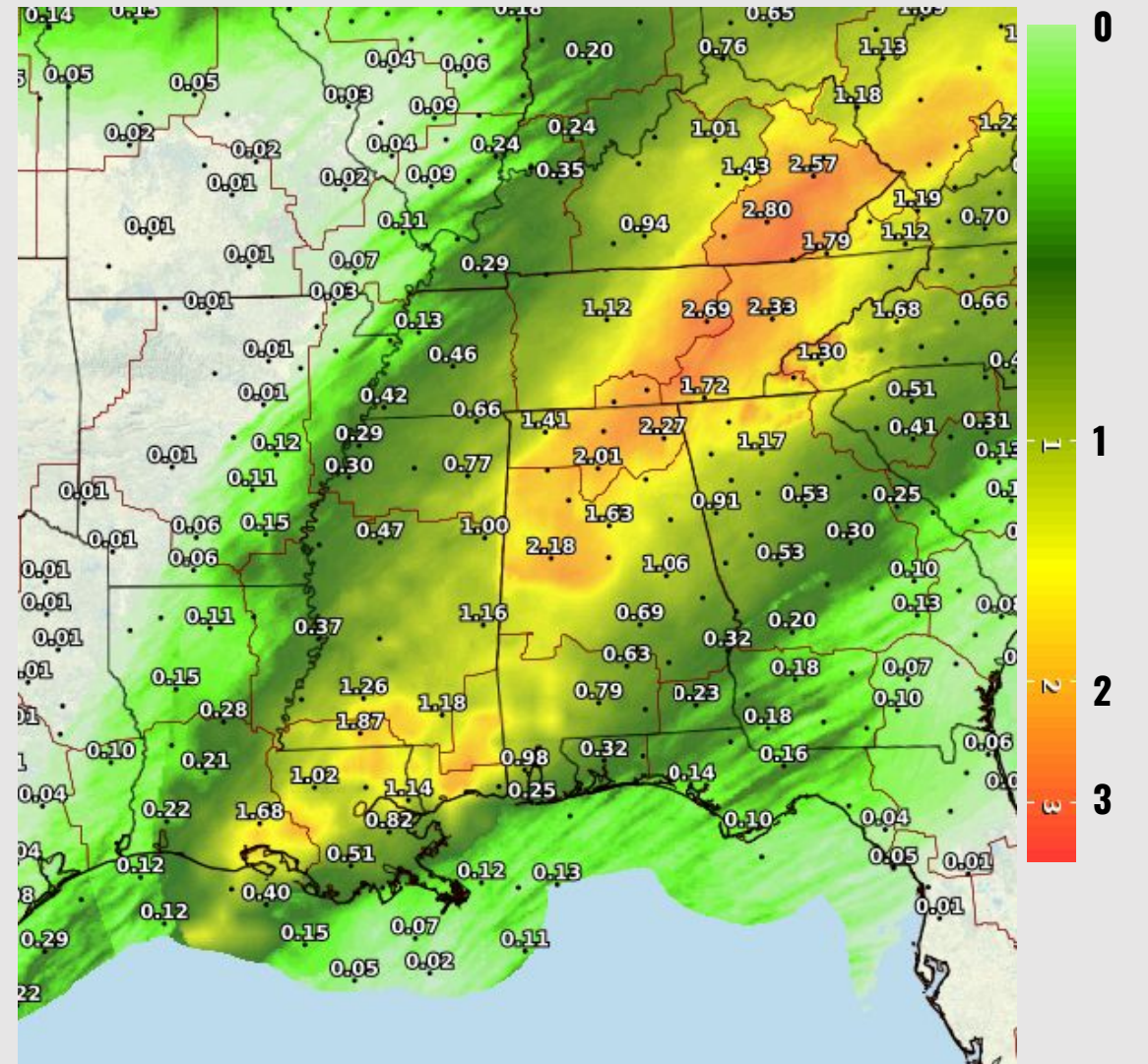


By late evening, the more intense thunderstorms will be exiting east of the forecast area.

Excessive Rainfall Outlook



Rainfall Forecast

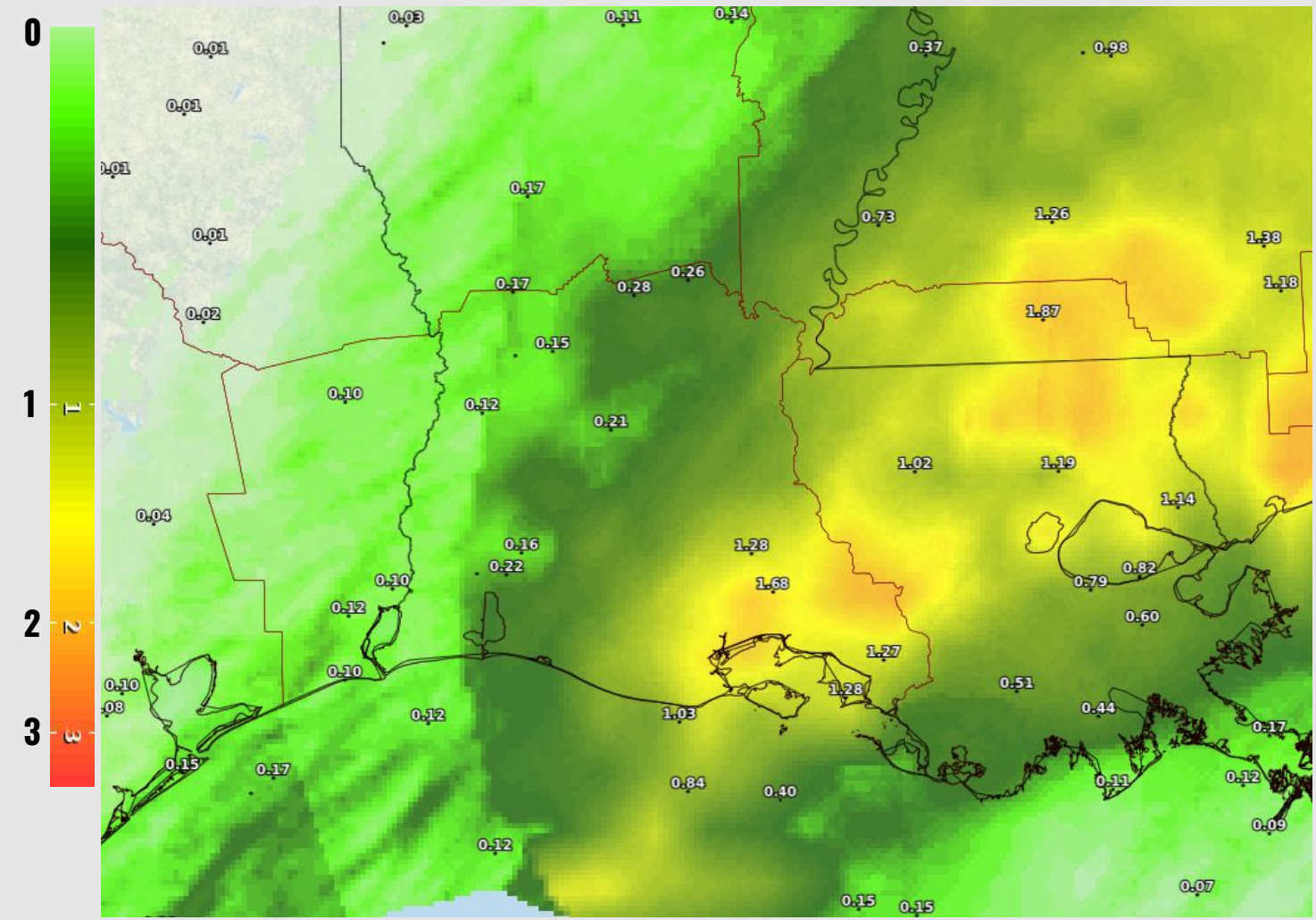




Key Message:

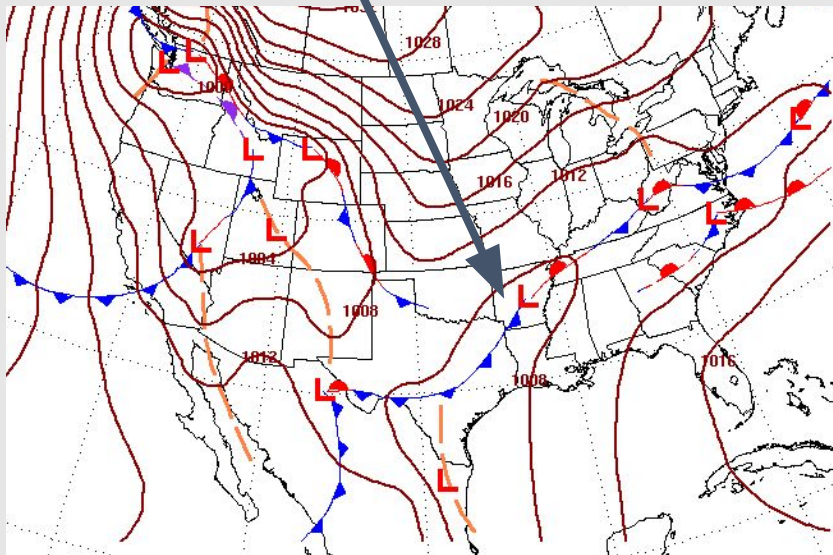
- Flood risk remains very low.
- Rainfall forecast 0.10 to 1.50 inch.
- Heaviest amounts in south central Louisiana
- Lighter amounts over southeast Texas.


Rainfall Forecast



Key Message:

- Rain ends Thursday - Thursday evening
- Chilly temperatures Friday and Saturday
- Warming trend Sunday into early next week
- Another strong system possible next Tuesday or Wednesday.



Friday	Friday Night	Saturday	Saturday Night	Sunday	Sunday Night	Washington's Birthday
						
Mostly Sunny	Mostly Clear	Mostly Sunny	Partly Cloudy	Mostly Sunny	Mostly Cloudy	Mostly Cloudy
High: 50 °F	Low: 31 °F	High: 53 °F	Low: 37 °F	High: 68 °F	Low: 53 °F	High: 75 °F

Chilly Friday and Saturday, then warming up early next work week.