



Weekly Weather Update

2:30 PM CDT

Thursday, December 29, 2022

Stacey Denson, NWS Lake Charles





TOP STORY:

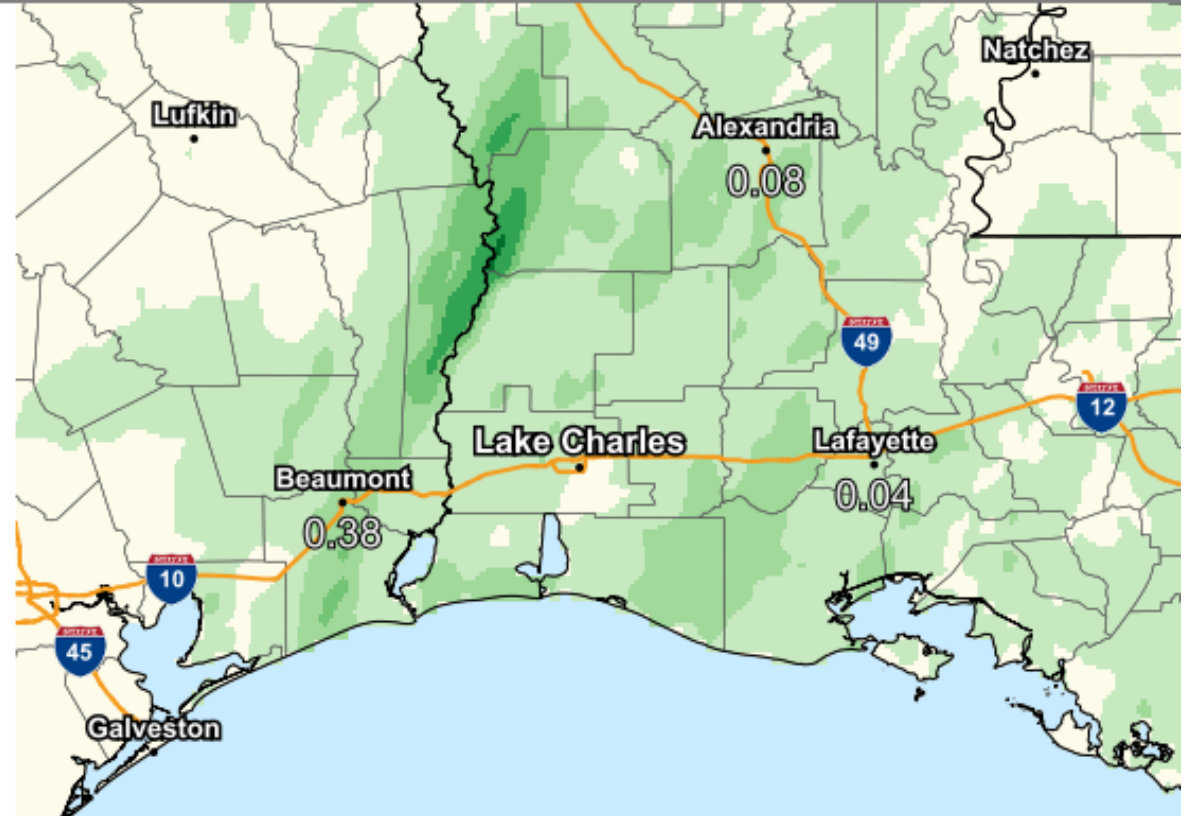
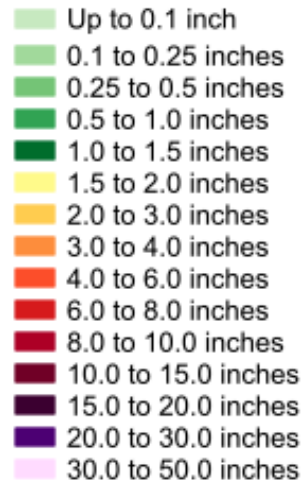
A couple of storm systems will bring widespread convection and heavy rain to the region today/tomorrow and again early next week.

	Low Temperatures	High Temperatures	Chance For Rain
Friday	50-59 F	69-72 F	30-90%
Saturday	50-55 F	69-73 F	0%
Sunday	63-66 F	73-76 F	0%
Monday	56-65 F	73-78 F	70-100%
Tuesday	46-54 F	69-75 F	30-70%
Wednesday	40-46 F	62-68 F	<20%
Thursday	39-45 F	59-62 F	0%



Observed Precipitation

Valid Ending Thursday December 29th, 2022 at 11 AM CST



Graphic Created
December 29th, 2022
11:26 AM CST

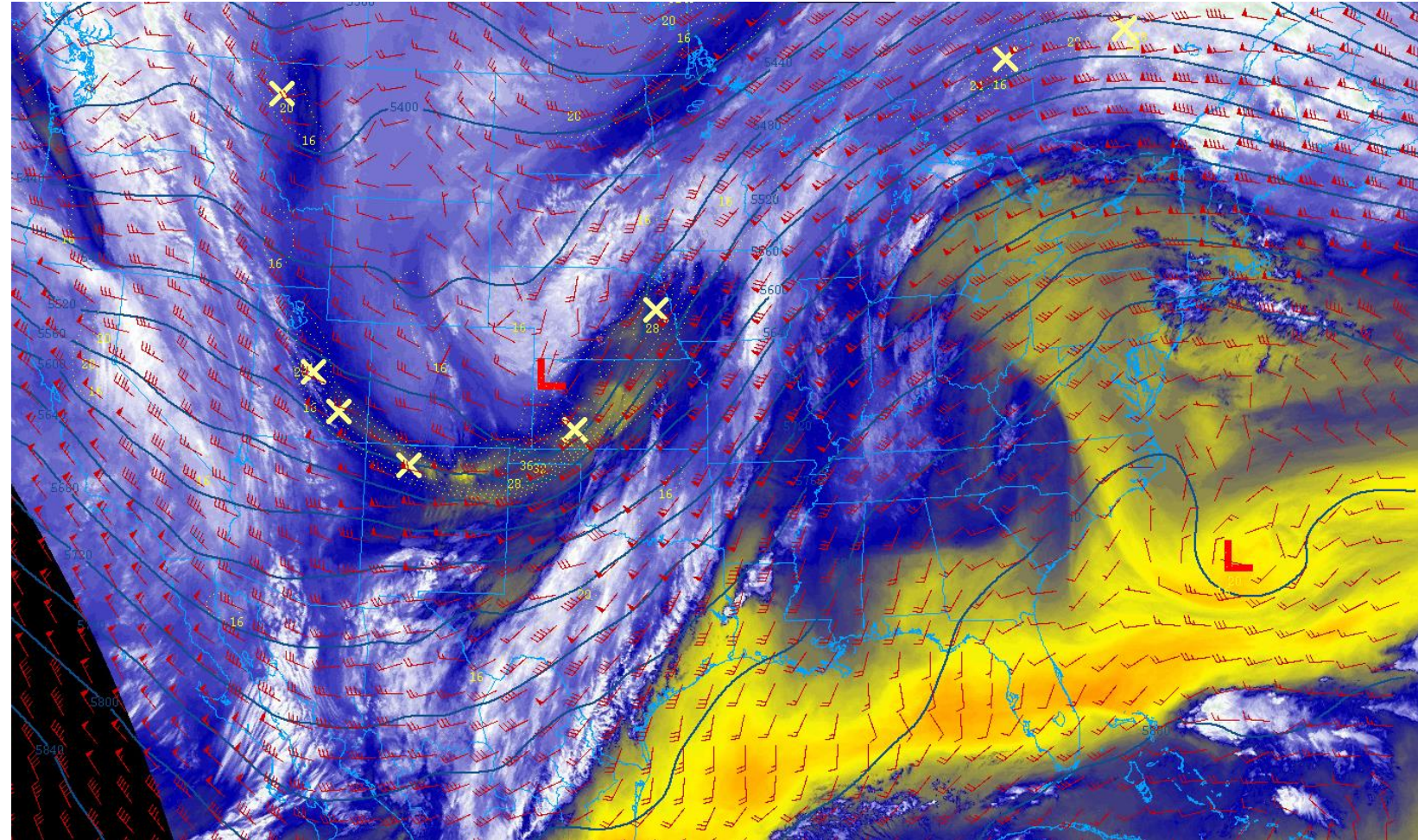
A strong cold front late last week brought a few showers to the region. Otherwise it has been a quiet and dry week.

Upper Level Steering Patterns



Lake Charles
WEATHER FORECAST OFFICE

An upper level trough dominates the Rockies and Plains region and is providing a moist southwesterly flow across the forecast area.

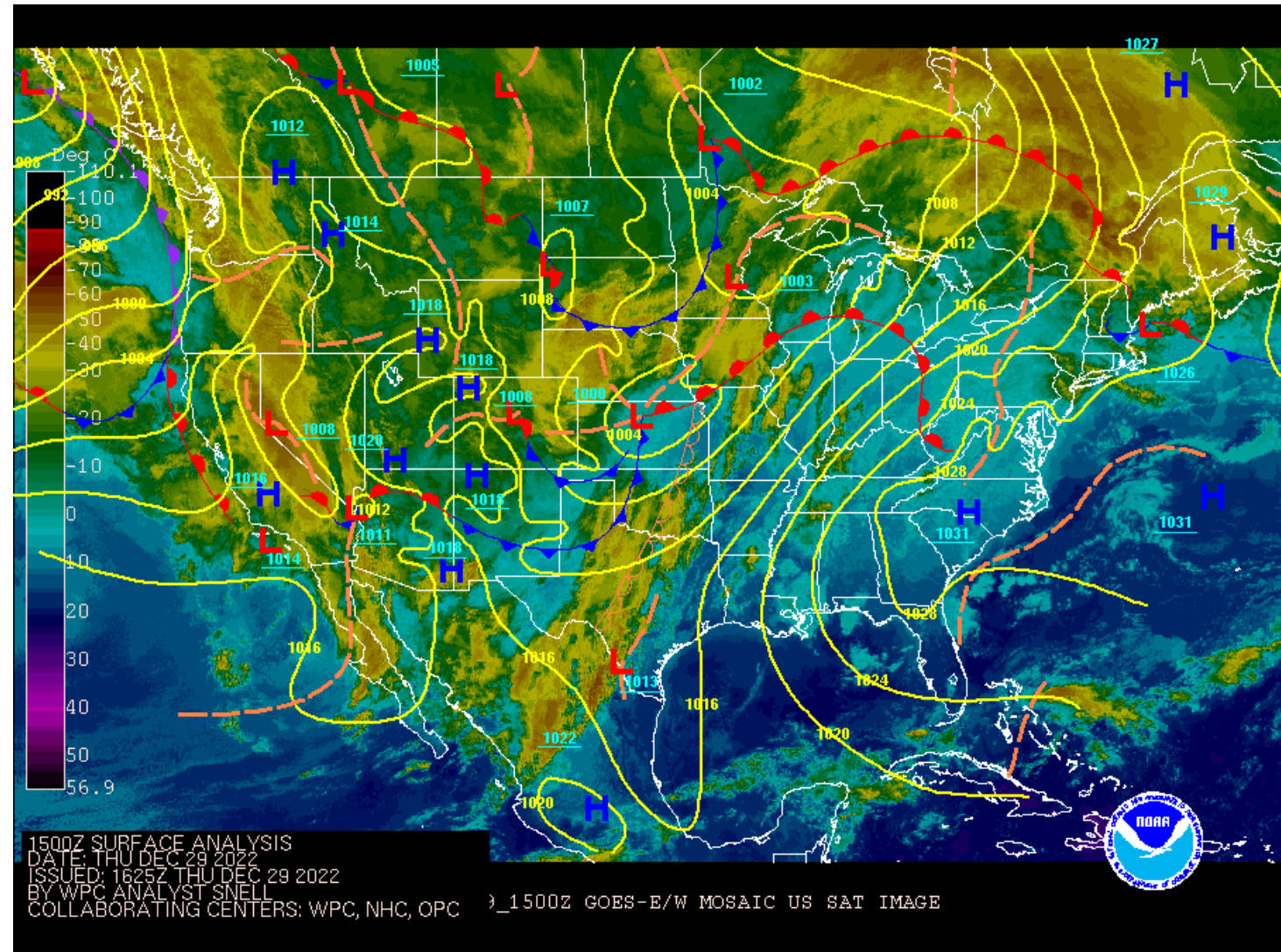


Surface Weather Map with Fronts



Lake Charles
WEATHER FORECAST OFFICE

High pressure to our east is providing a moderate onshore flow across SE TX and S LA. Elsewhere a couple of cold fronts are noted in the Plains.

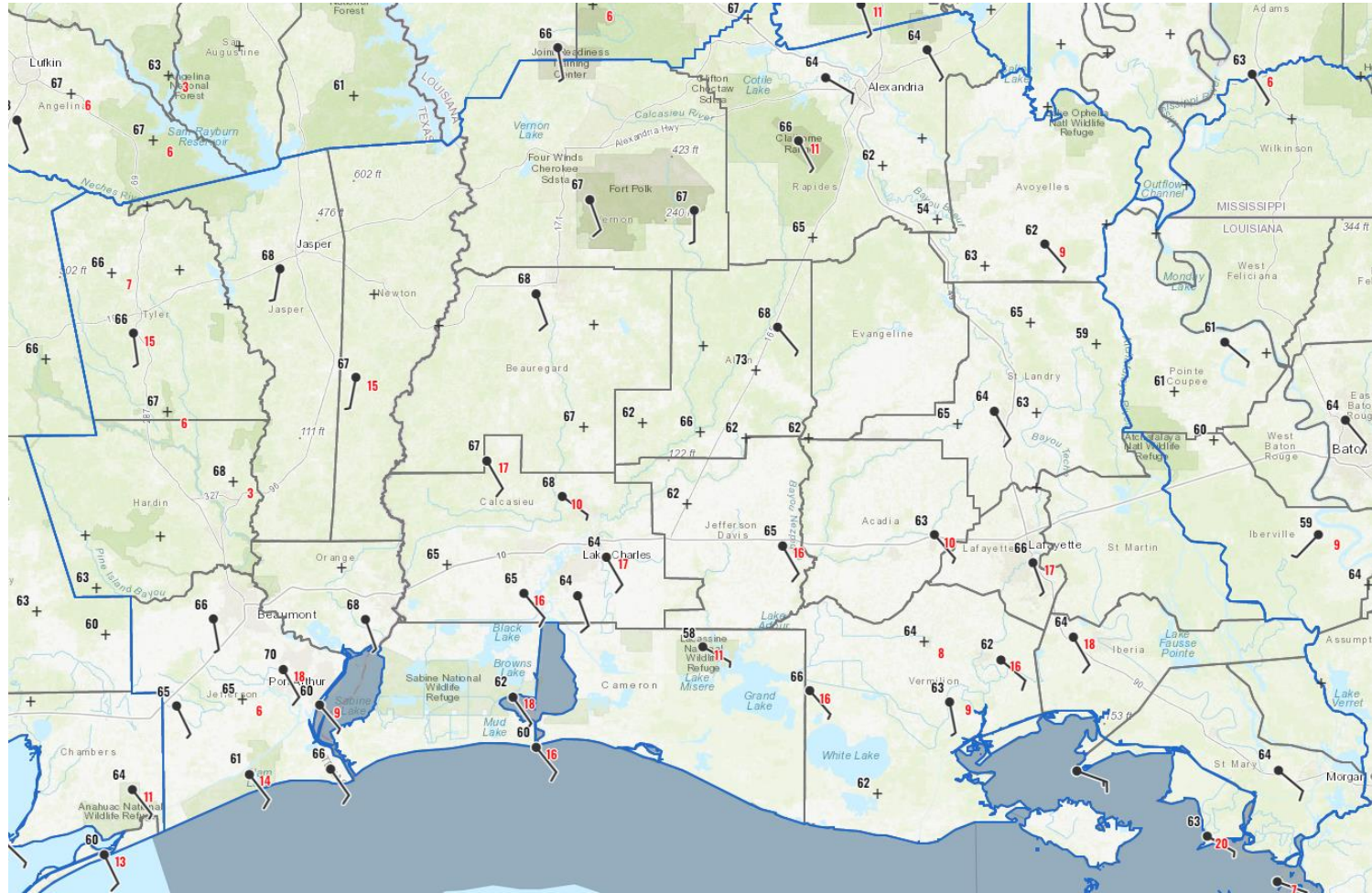


6 am Weather Observations



Lake Charles
WEATHER FORECAST OFFICE

Temperatures were in the mid to upper 60s at 6AM this morning. Skies were mostly cloudy and winds were out of the south/southeast.

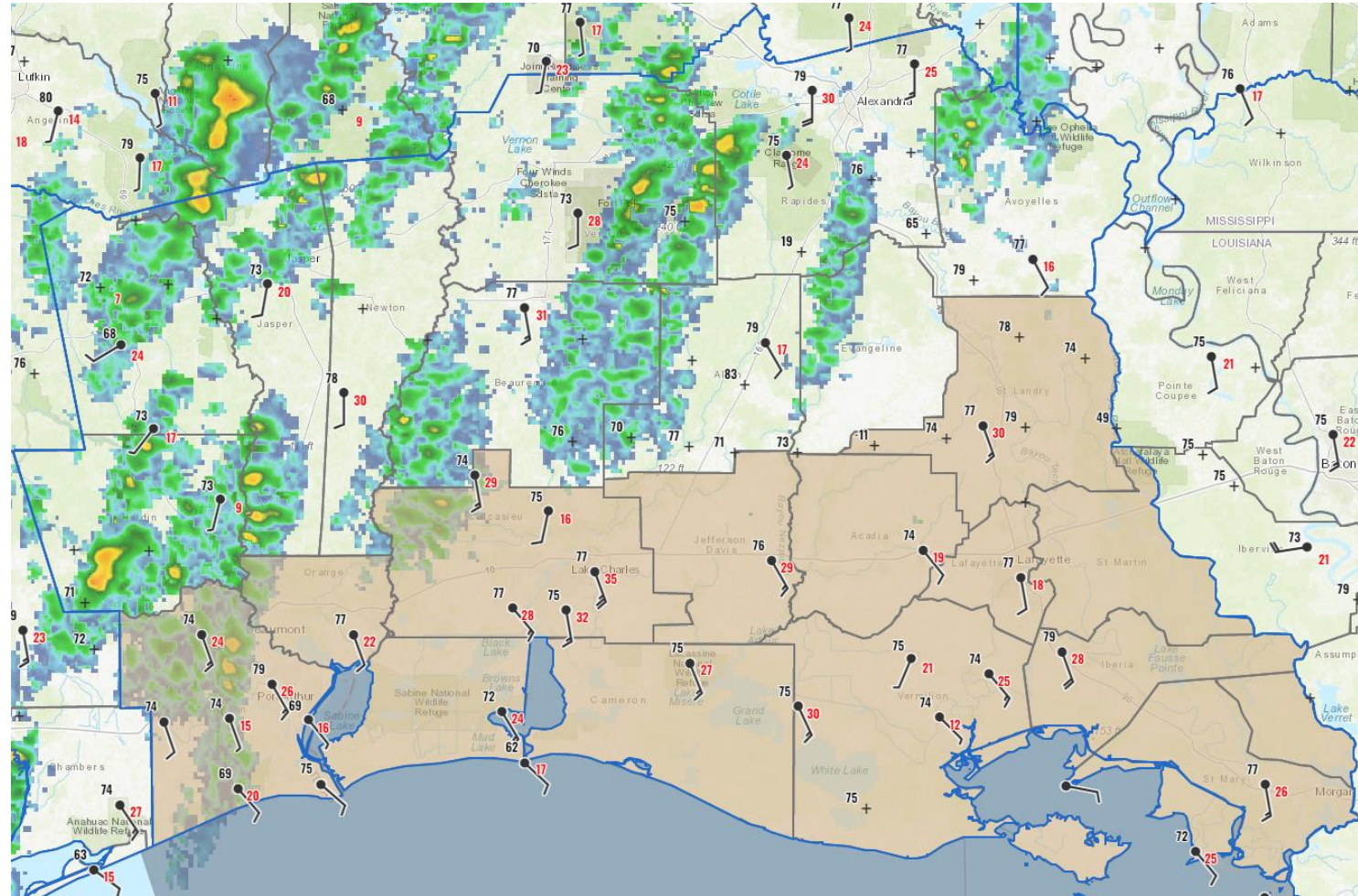


2 pm Weather Observations



Lake Charles
WEATHER FORECAST OFFICE

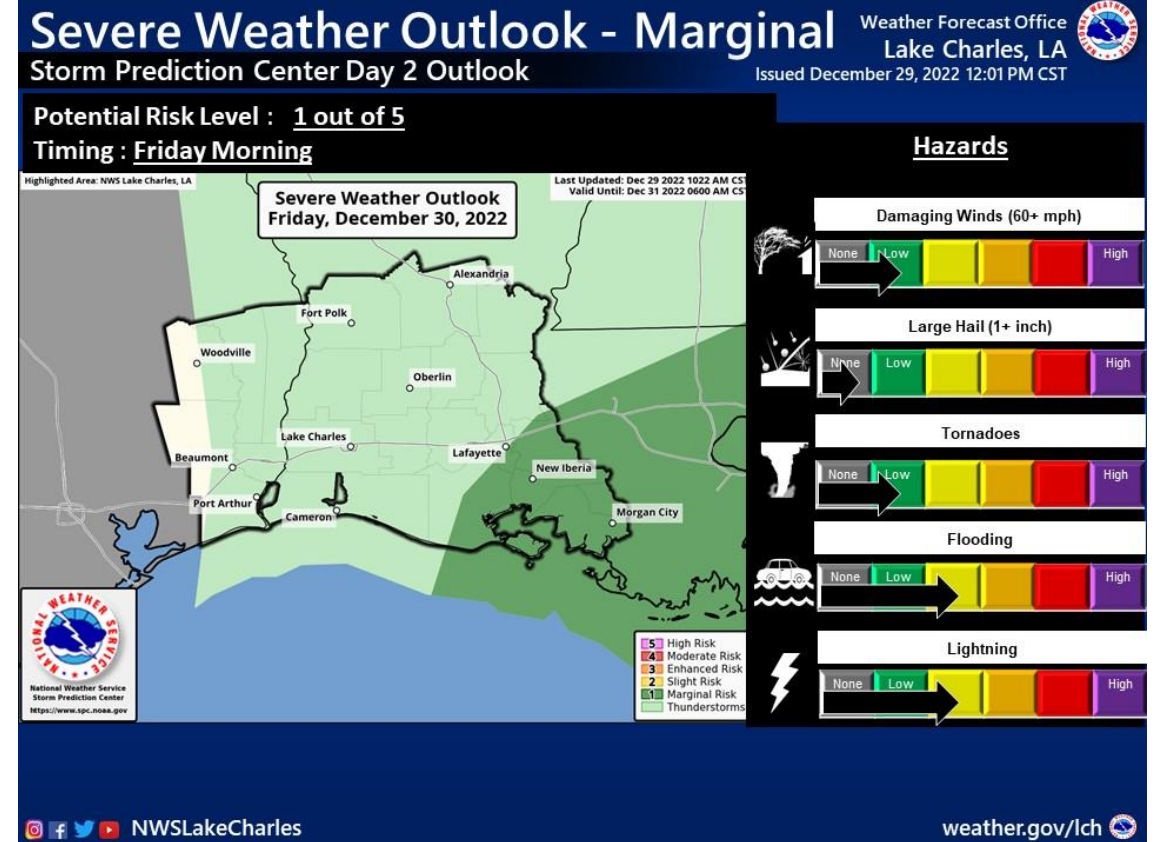
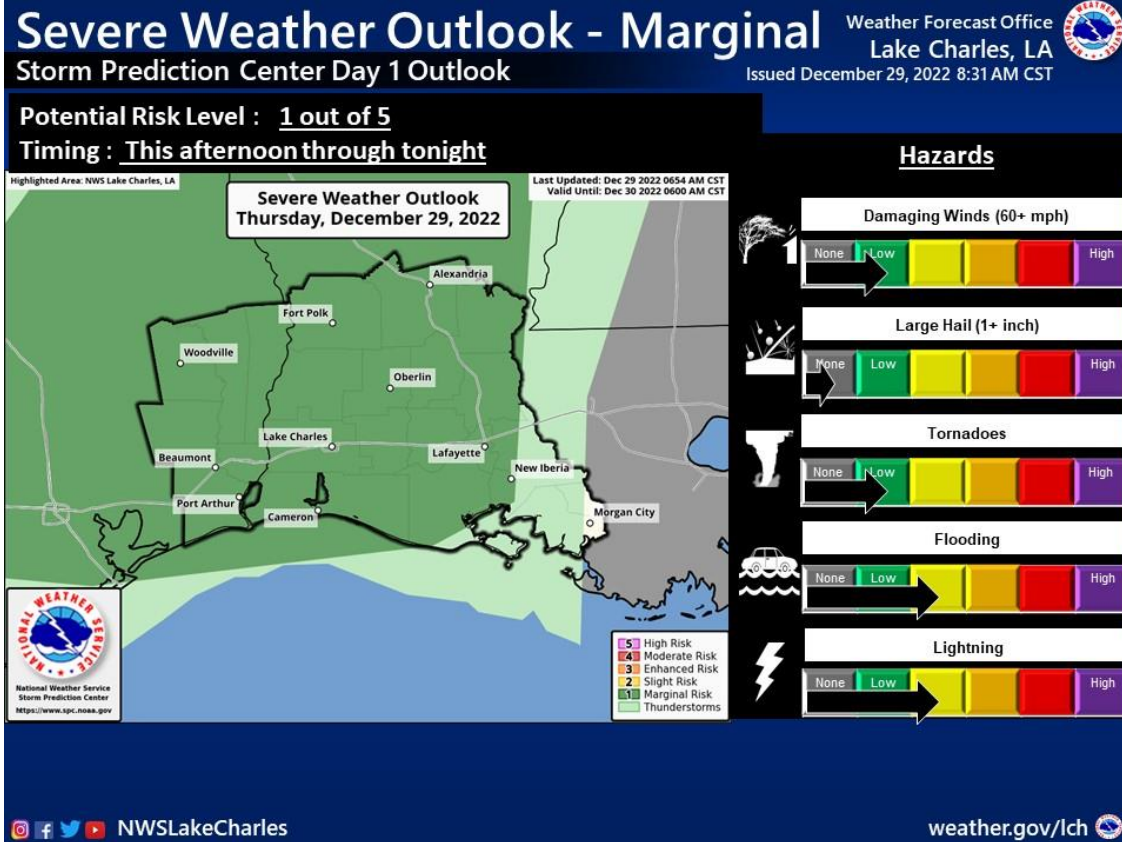
Scattered showers are ongoing across SE TX and CENLA this afternoon. Wind are out of the south-southeast gusting to roughly 20-30 MPH. A Wind Advisory is currently in effect along and south of I-10.



Severe Weather Outlook



Lake Charles
WEATHER FORECAST OFFICE



A very moist airmass and a mid-level trough overhead will bring scattered to widespread showers and thunderstorms to the region today, tonight, and tomorrow. Convection will remain fairly scattered through the rest of the afternoon before expanding in coverage overnight. The main severe weather threat will be damaging winds however, an isolated tornado cannot be ruled out.

Excessive Rainfall Outlook



Lake Charles
WEATHER FORECAST OFFICE

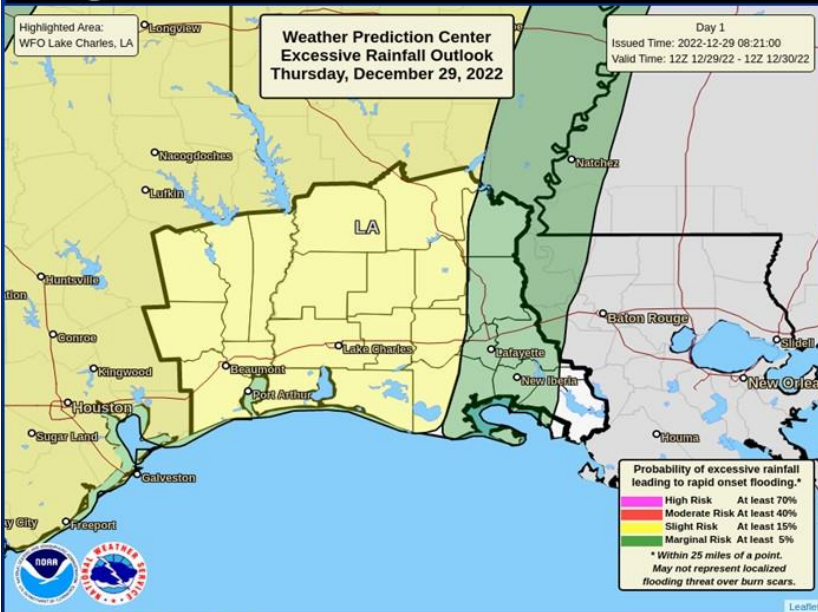
Excessive Rainfall Outlook - Slight

Weather Prediction Center Day 1 Outlook

Weather Forecast Office
Lake Charles, LA

Issued December 29, 2022 8:34 AM CDT

Potential Risk Level : **2 out of 4**
Rainfall Amounts : **1 – 3 Inches with Locally Higher Amounts**
Timing : **This afternoon through tonight**



NWSLakeCharles

weather.gov/lch

Excessive Rainfall Outlook - Slight

Weather Prediction Center Day 2 Outlook

Weather Forecast Office
Lake Charles, LA

Issued December 29, 2022 12:02 PM CST

Potential Risk Level : **2 out of 4**
Rainfall Amounts : **1 – 2 inches with localized higher amounts**
Timing : **Friday Morning**



NWSLakeCharles

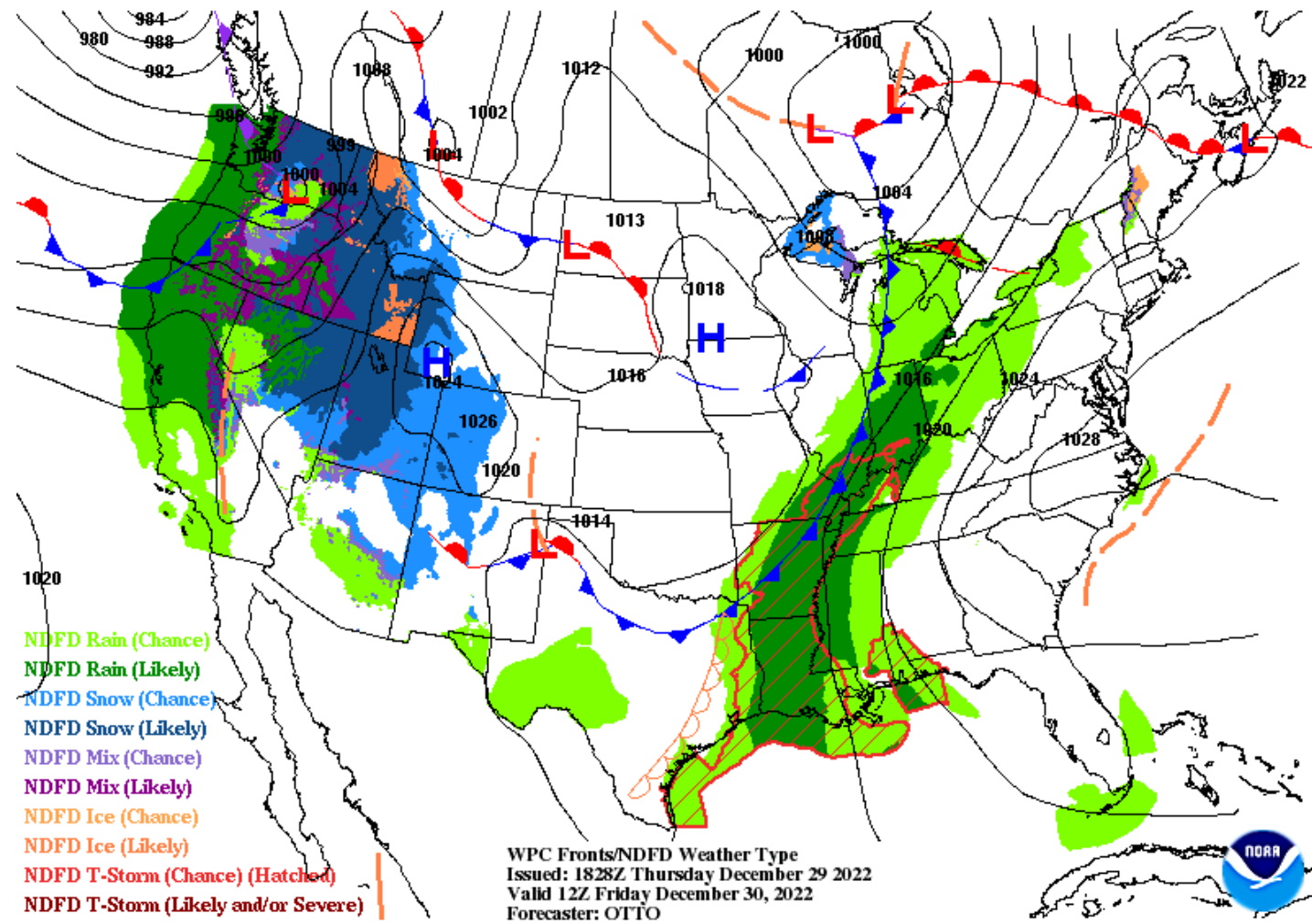
weather.gov/lch

Along with the possibility for severe weather, these storms will be capable of producing localized flash flooding, especially where storms begin to train across the same locations. Widespread rainfall amounts of 1-3 inches are expected with these storms, along with localized higher amounts.



NWS LCH REGIONAL WEATHER

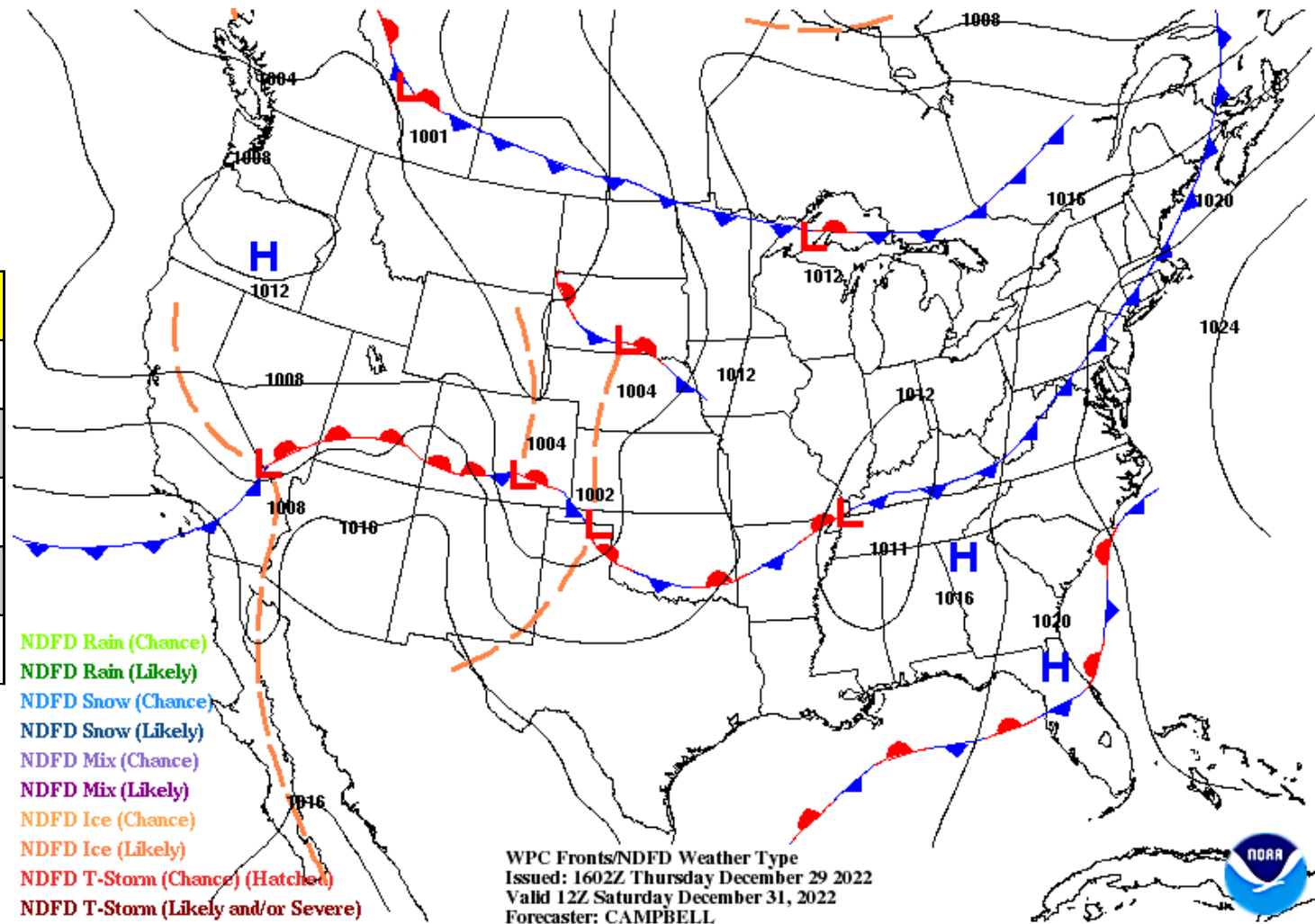
Low Temperature	50-59 F
High Temperature	69-72 F
Wind	SE 5-15 mph
Rain Chances	30-90%
Weather Hazards	Thunderstorms





NWS LCH REGIONAL WEATHER

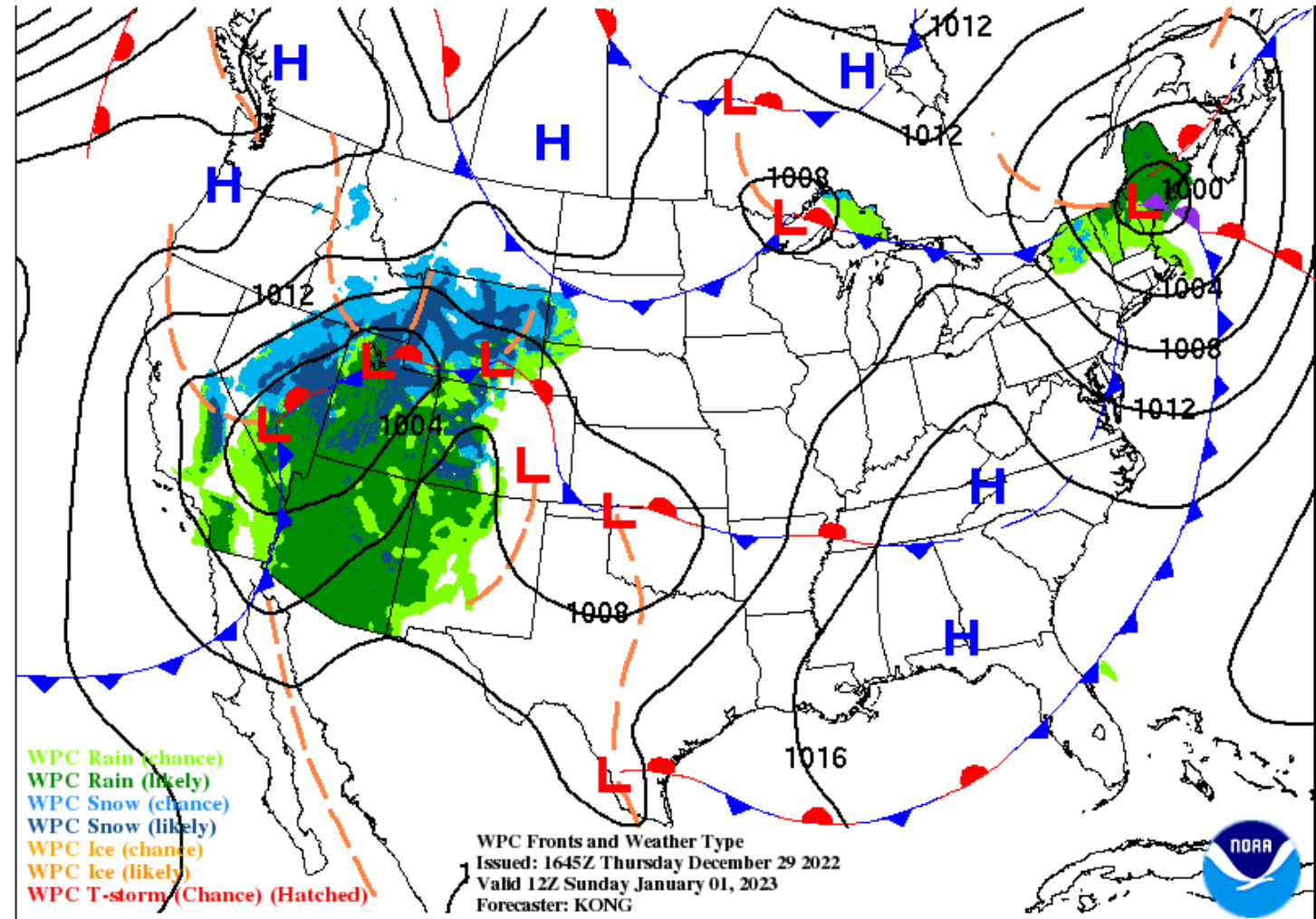
Low Temperature	50-55 F
High Temperature	69-73 F
Wind	W-SW 5-10 mph
Rain Chances	0
Weather Hazards	None





NWS LCH REGIONAL WEATHER

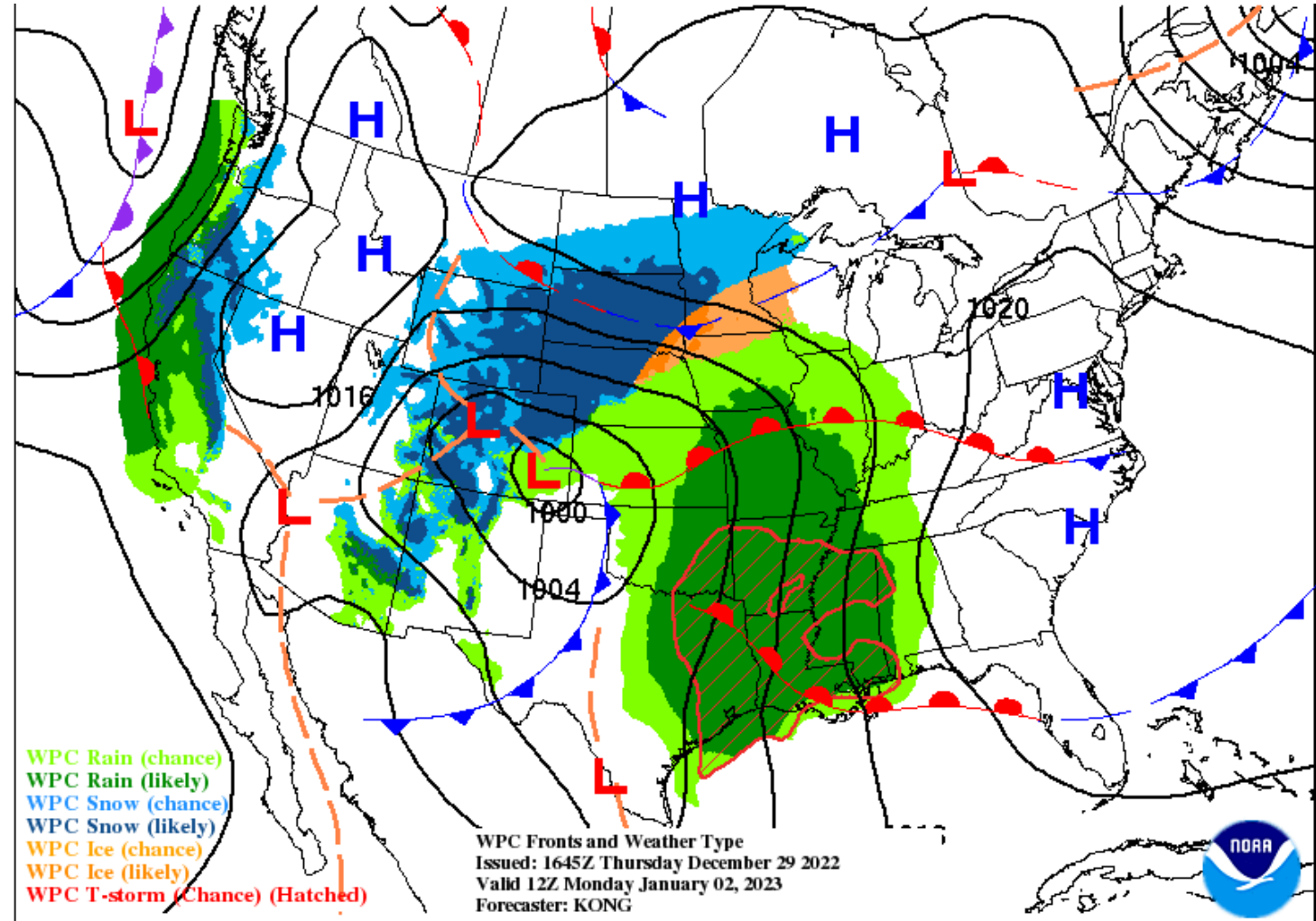
Low Temperature	63-66 F
High Temperature	73-76 F
Wind	SSE 5-15 mph
Rain Chances	0
Weather Hazards	None





NWS LCH REGIONAL WEATHER

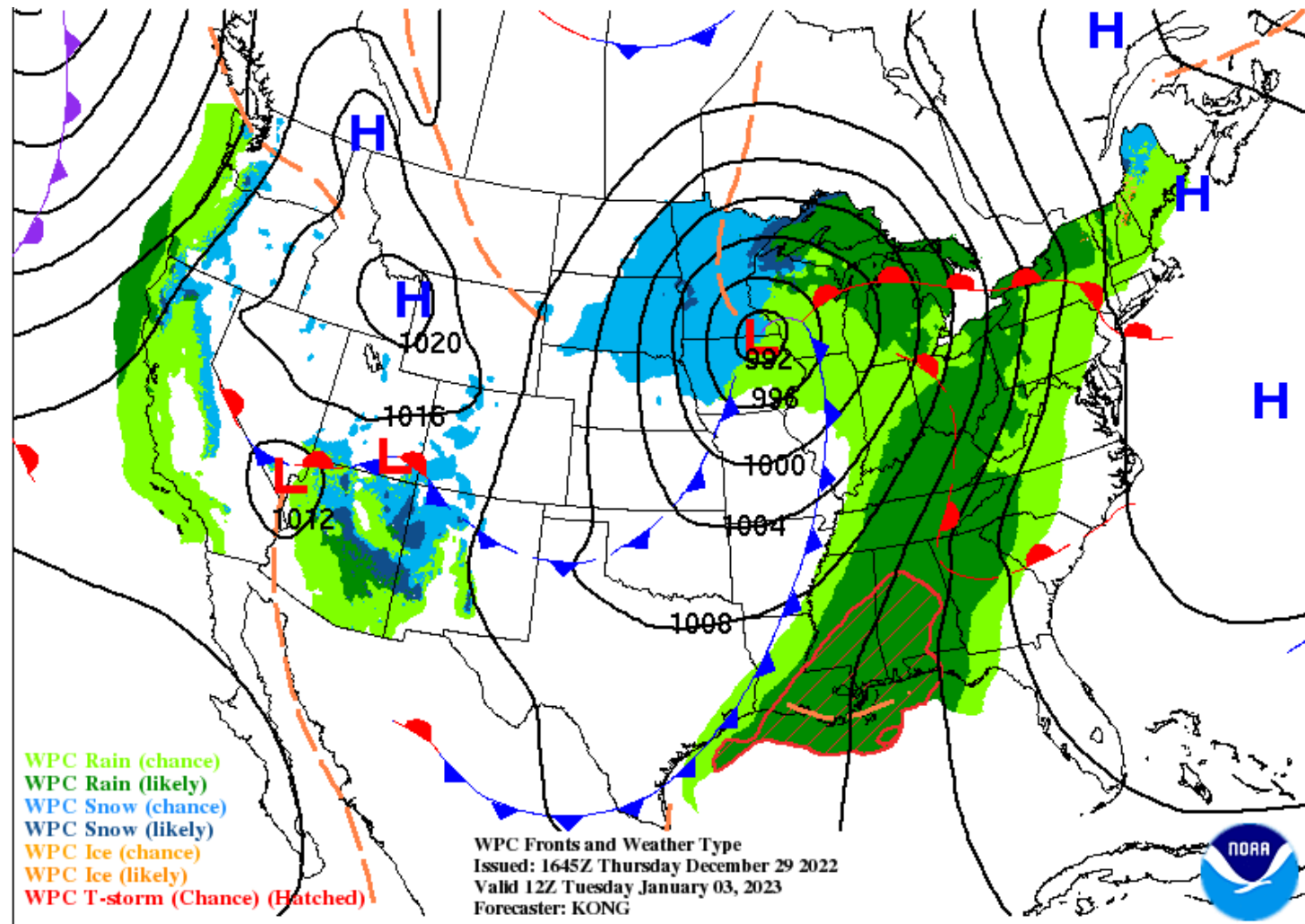
Low Temperature	56-65 F
High Temperature	73-78 F
Wind	SSE 10-20 mph
Rain Chances	70-100%
Weather Hazards	Thunderstorms





NWS LCH REGIONAL WEATHER

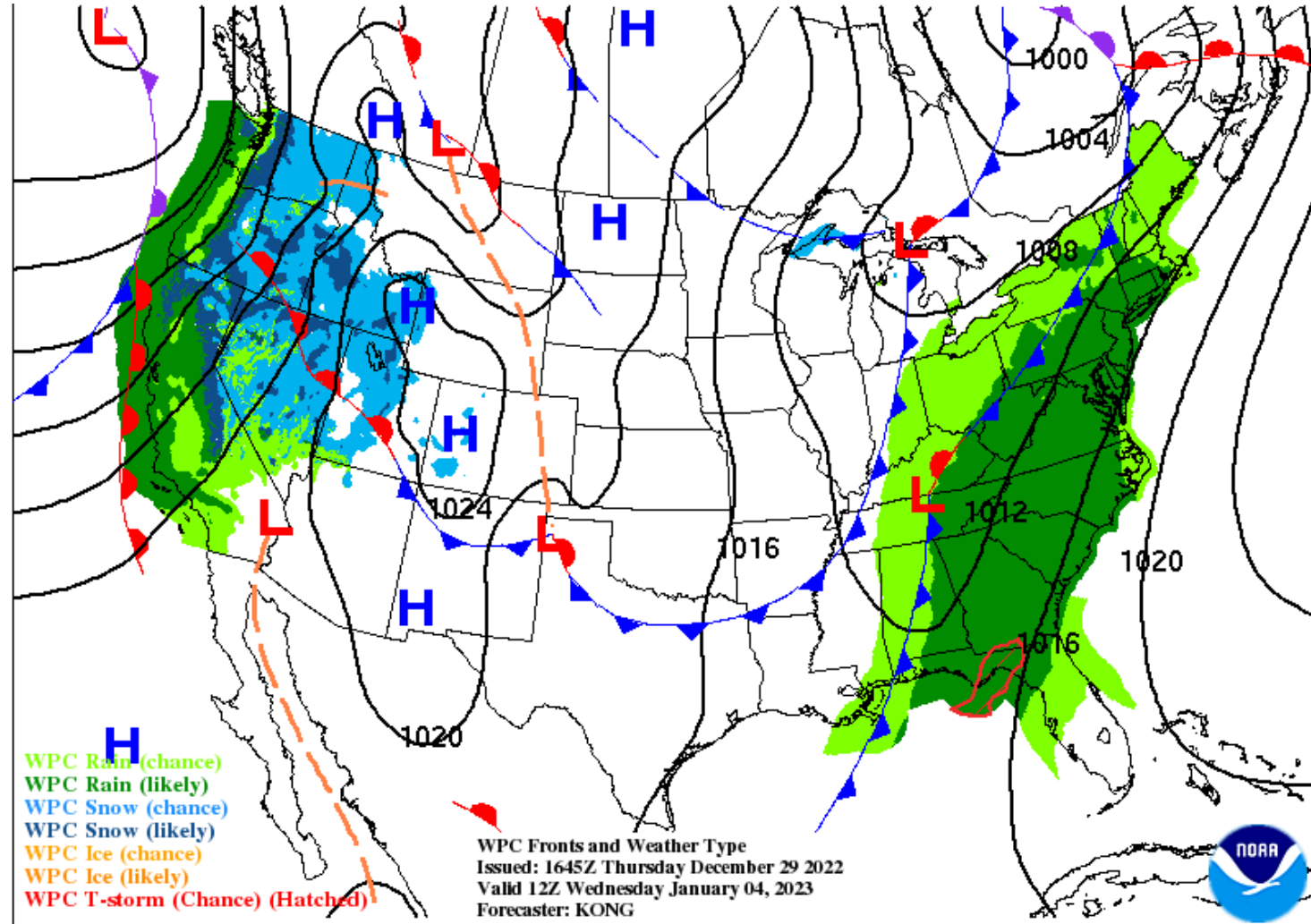
Low Temperature	46-54 F
High Temperature	69-75 F
Wind	SW-W 5-10 mph
Rain Chances	30-70%
Weather Hazards	Thunderstorms





NWS LCH REGIONAL WEATHER

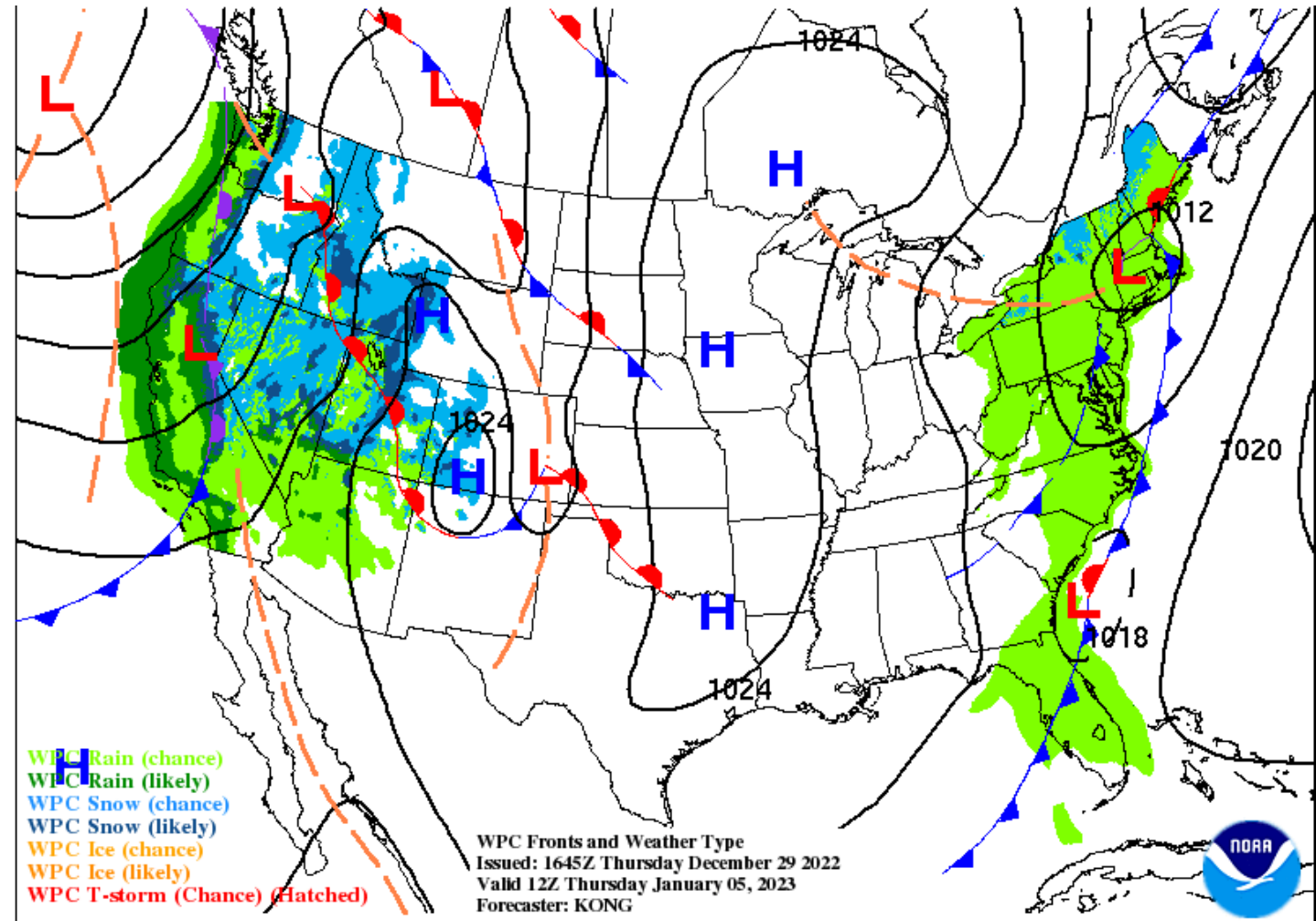
Low Temperature	40-46 F
High Temperature	62-68 F
Wind	NW-N 5-10 mph
Rain Chances	<20%
Weather Hazards	Showers





NWS LCH REGIONAL WEATHER

Low Temperature	39-45 F
High Temperature	59-62 F
Wind	N-NNE 5-10 mph
Rain Chances	0
Weather Hazards	None



Weekly Weather Summary Table



Lake Charles
WEATHER FORECAST OFFICE

Color Codes Except for Temperatures

Yellow = Low Threat

Orange = Moderate Threat

Red = High Threat

Color Codes For Temperatures

Yellow=5 F above normal

Orange=10 F above normal

Red=15 F above normal

Vry Lt Blue=5 F below normal

Lt Blue=10 F below normal

Blue=15 F below normal

Weather	Friday 12/30/22	Saturday 12/31/22	Sunday 01/01/23	Monday 01/02/23	Tuesday 01/03/23	Wednesday 01/04/23	Thursday 01/05/23
Rain Total	1.0-2.0"	None	None	0.50-2.00"	0.25-1.25"	<0.10"	None
T-Storm/ Lightning	Scattered	None	None	Scattered	Scattered	Isolated	None
Tornado/Hail/ Dmg Wind	Marginal	None	None	None	None	None	None
Wind	SE 5-15 mph	W-SW 5-10 mph	SSE 5-15 mph	SSE 10-20 mph	SW-W 5-10 mph	NW-N 5-10 mph	N-NNE 5-10 mph
Tides	Near Normal	Near Normal	Near Normal	Near Normal	Near Normal	Near Normal	Near Normal
Wave Height	Near: 2-5 ft Off: 4-7 ft	Near: 1-3 ft Off: 3-5 ft	Near: 1-2 ft Off: 2-3 ft	Near: 2-5 ft Off: 4-7 ft	Near: 2-5 ft Off: 4-7 ft	Near: 1-3 ft Off: 3-5 ft	Near: 1-2 ft Off: 2-4 ft
Temperature	50-59 F	50-55 F	63-66 F	56-65 F	46-54 F	40-46 F	39-45 F
<small>Normal Low: 41-46 F Normal High: 61-66 F</small>	69-72 F	69-73 F	73-76 F	73-78 F	69-75 F	62-68 F	59-62 F



- Scattered to widespread showers and storms capable of producing damaging winds and heavy downpours will be possible now through tomorrow. A Marginal Risk for severe weather and a Slight Risk for excessive rainfall are in place.
- After a drier weekend, the next frontal system will move through the region on Monday/Tuesday bringing another round of heavy rain and thunderstorms.
- After a warm and muggy end to the year, a return to more seasonal temps is expected by the later half of next week.

