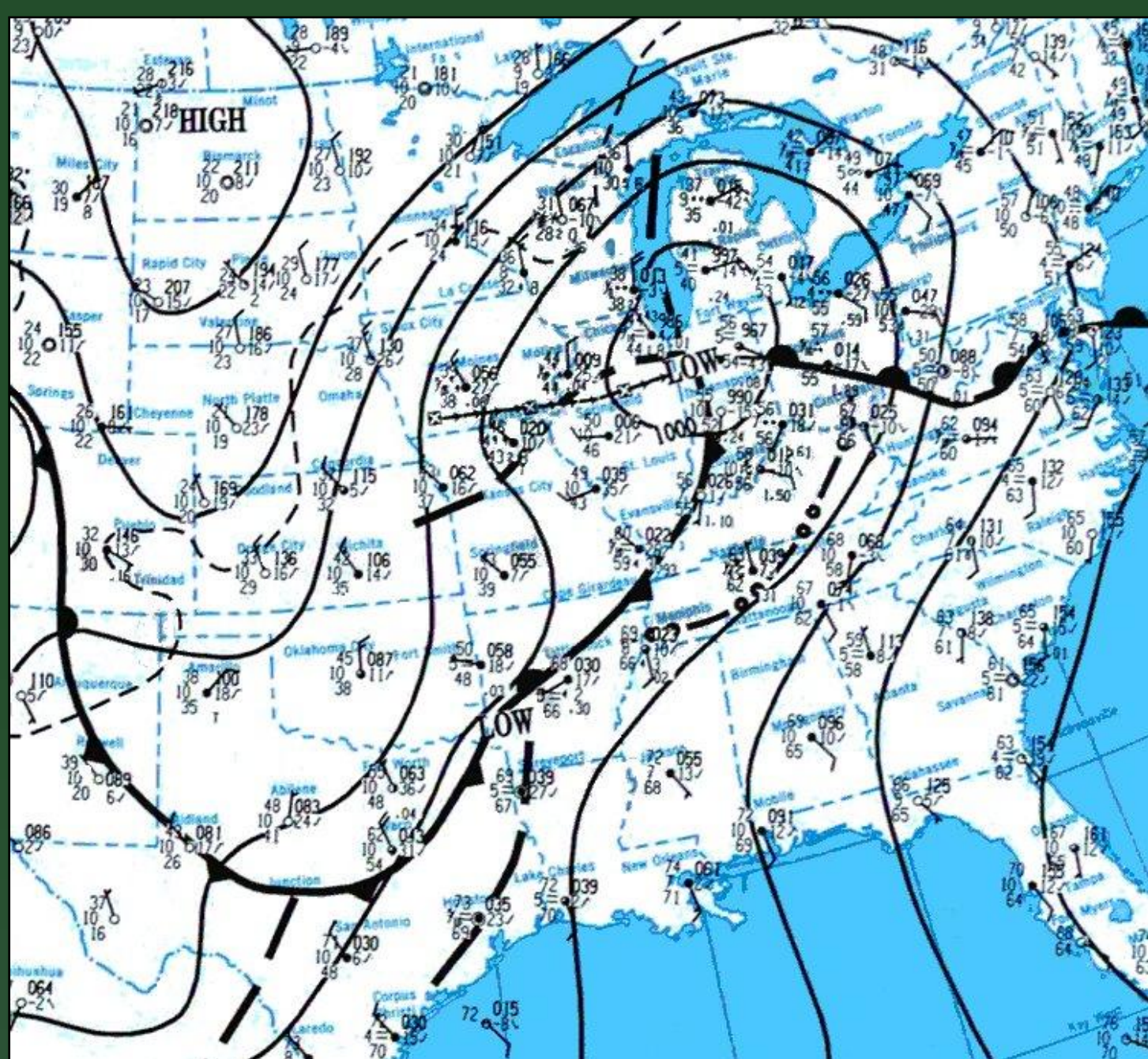
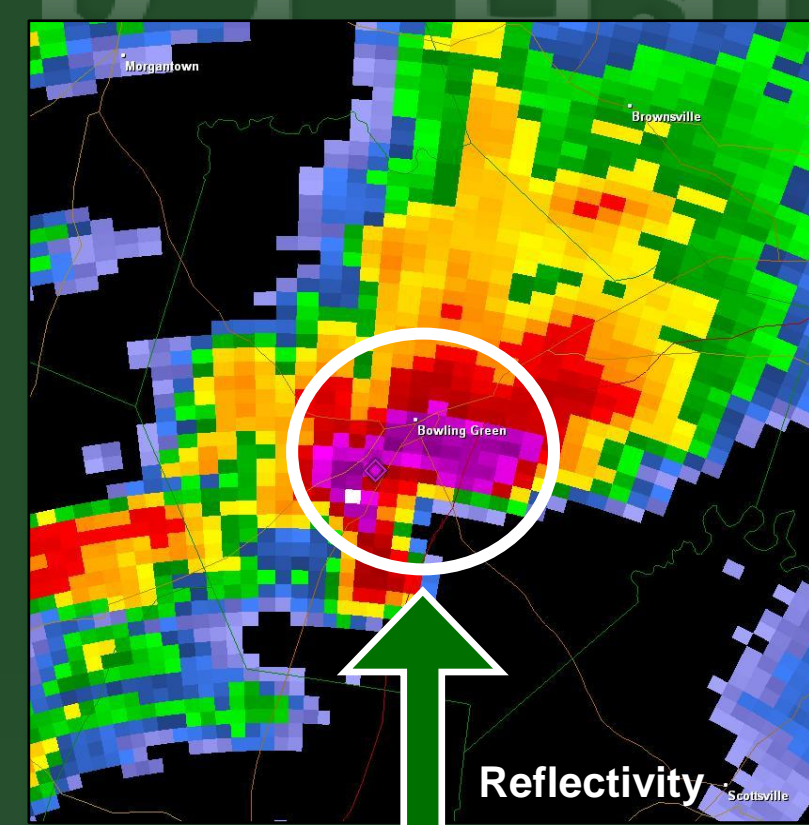


# Bowling Green, KY Hailstorm

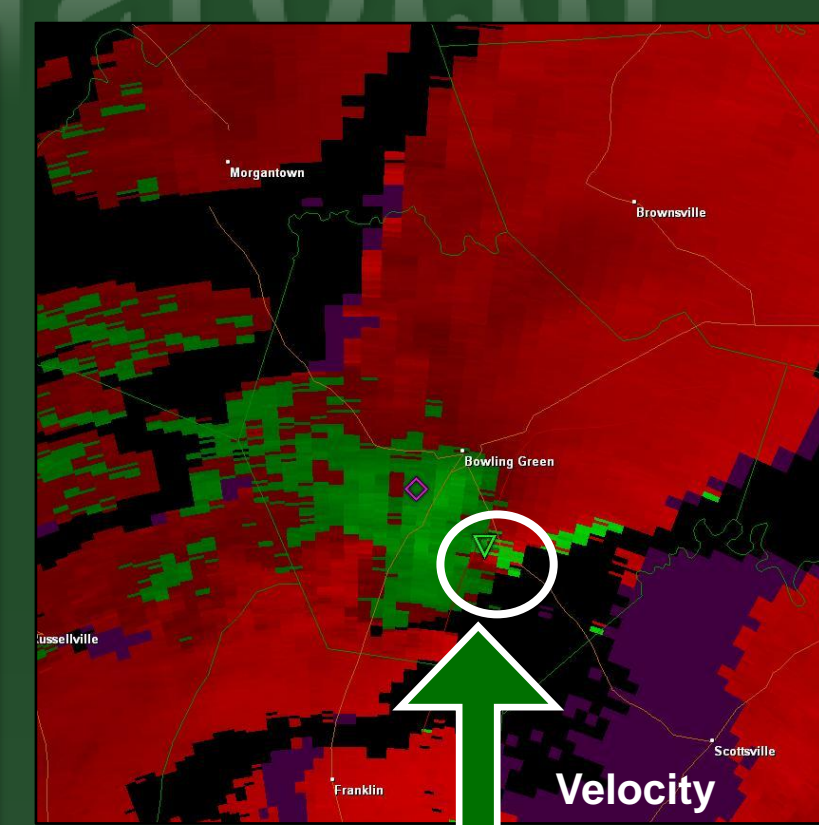


On April 16, 1998, a classic supercell thunderstorm moved from northern Logan County through central parts of Warren, Barren, and Metcalfe counties and then into western Adair County in South-Central Kentucky.

The weather pattern on April 16 was characterized by a low pressure center over Northern Indiana with a cold front extending southwest into Western Kentucky and Tennessee. Warm, moist, unstable air lay ahead of the cold front. A strong jet stream extended from Oklahoma to Michigan.



Pink/purple colors represent the area of large hail



Mesocyclone location



FLOODING ON RUSSELLVILLE ROAD NEAR CAMPUS

Photo by Joe Imel

Immediately following the hailstorm, Western Kentucky University was pounded by 5 to 5.5 inches of rain in a three-hour time frame. This resulted in major flooding because the ground was already saturated due to previous rainfall that week.



SEVERE HAIL DAMAGE TO A CAR

Photo by Joe Imel



TORNADO DAMAGE

Photo by Wales Hunter

## Effects of Hailstorm

- \$10 million in damage at Greenwood Mall
- Cars totaled at all area dealerships
- Roof and water damage at Bowling Green High School
- Several minor injuries
- Major damage:
  - 8300 homes, 900 mobile homes
  - 4000 vehicles
  - 37 businesses
  - 14 apartments
- Minor damage:
  - 1300 homes
  - 6000 vehicles
  - 42 businesses
  - 4 churches

**TOTAL DAMAGE: \$510 million**

*"When the storm was over, the hail covered the ground like snow. All trees were defoliated. Branches were broken. Pieces of houses and dormitories were everywhere. It was the only storm I have experienced where the aftermath looked like a war zone. Many parking lots on campus were under 5 to 6 feet of water. All you could see was the tops of cars. It truly was the wildest thunderstorm I've ever seen in the 30 years I've been in Kentucky."*

- Shawn Crowe, Former Meteorology & Broadcasting Student at WKU



Photo by Wales Hunter



Photo by Wales Hunter



Photo by Wales Hunter



BOWLING GREEN HIGH SCHOOL HAIL/WATER DAMAGE

Photo by Wales Hunter



TORNADO DAMAGE IN RURAL WARREN COUNTY

Photo by Wales Hunter

# APRIL 16, 1998



HAIL DAMAGE

Photo courtesy of BG Daily News



TORNADO DAMAGE

Photo by Joe Imel

## Tornado Damage Summary

### •F2: Metcalfe County

- 1 fatality
- 54 structures destroyed
- 43 structures received major damage
- 19 structures minimally damaged

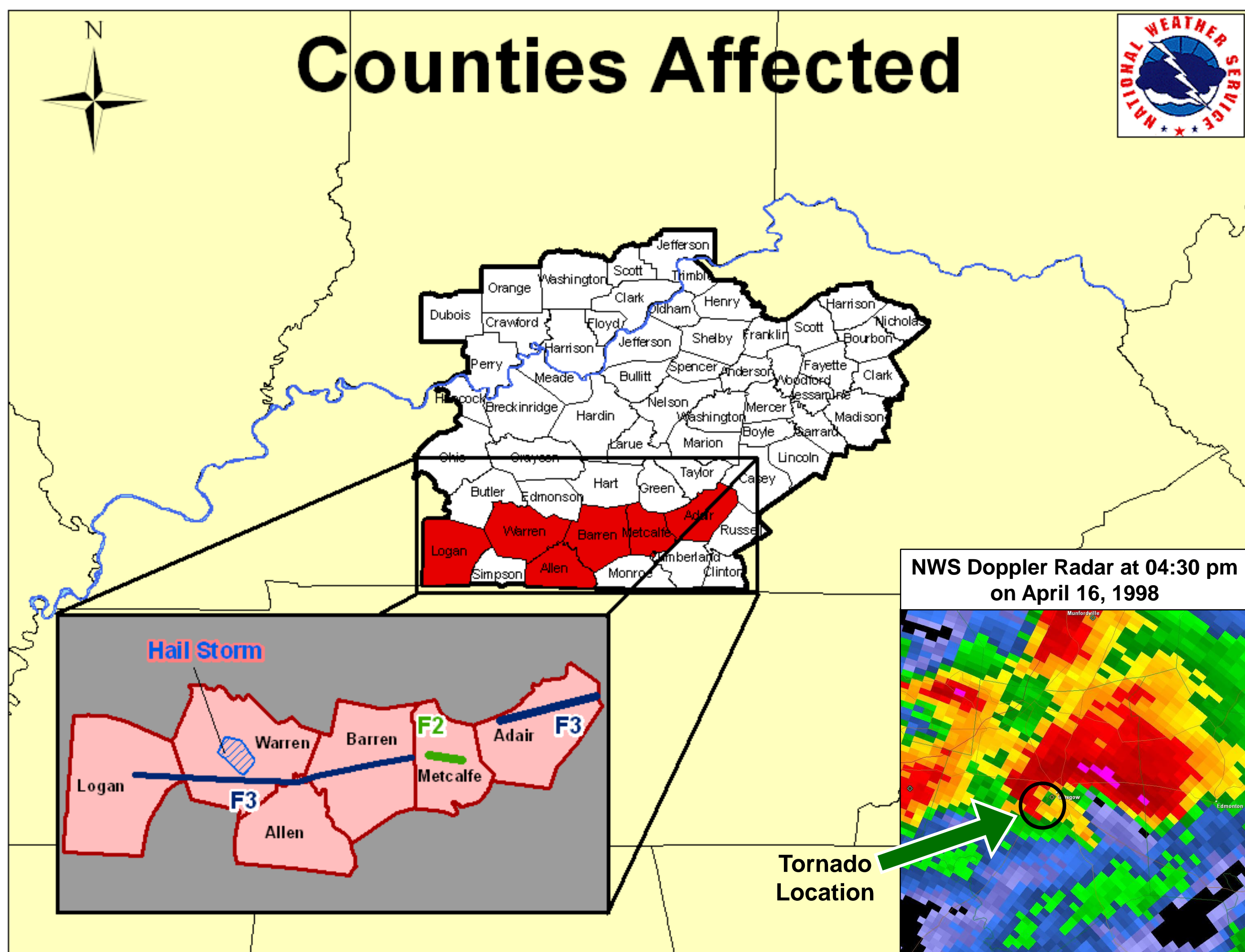
### •F3: Logan, Warren, Allen, and Barren Counties

- 2 fatalities in Barren County
- 146 homes and 50 mobile homes damaged or destroyed
- Glasgow
  - ❖ 46 homes, 35 mobile homes, and 25 barns destroyed or badly damaged
  - ❖ Winds ~ 175 mph

### •F3: Adair County

- Portland → Pellyton
  - ❖ 14 houses destroyed or received major damage
  - ❖ 3 mobile homes and 27 barns destroyed
- Damaged/destroyed:
  - ❖ 30 homes
  - ❖ 84 barns
  - ❖ 2 schools
  - ❖ 8 businesses

## Counties Affected



NWS Doppler Radar at 04:30 pm on April 16, 1998

Tornado Location

# South-Central KY Tornadoes



www.weather.gov/louisville