

Tornado Outbreak

March 11th, 2006

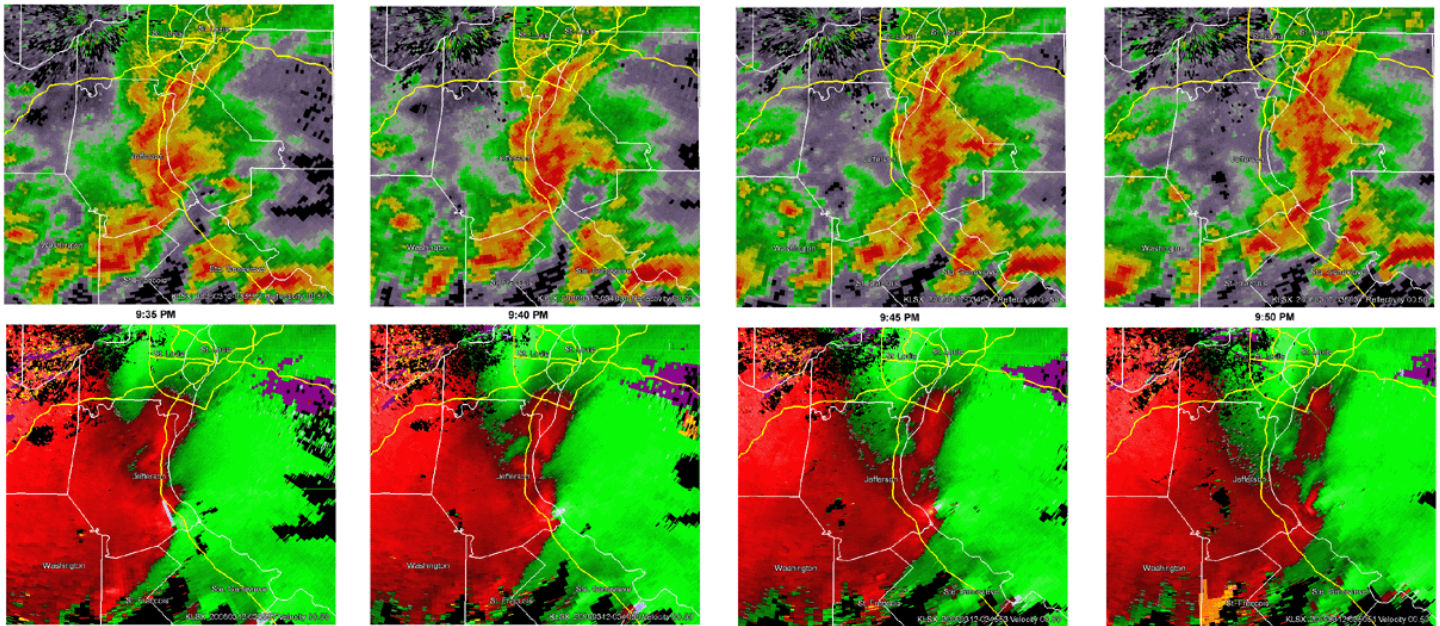
Overview

A large trough of low pressure was located over the western United States with embedded fast moving shortwaves being ejected into the Central Plains. At the surface low pressure moved northeast from Minnesota to western Ontario with a trailing cold front through Kansas and into the Texas Panhandle moving east toward Missouri. Gulf moisture had surged north into mid-Mississippi River Valley upon a strong low-level jet and deep layer shear associated with the vigorous polar jet supported the development of supercells east of the cold front across Missouri and Illinois. Thunderstorms continued well into the night across southern Missouri and Illinois producing some flash flooding along local rivers and streams.

Damage Surveys

Festus, Mo & Fults, Il

- 3 Tornado Touchdowns
- F0, F1 and F3 Damage
- 0 Fatalities and 0 Injuries



Festus, Mo



Festus, Mo



Festus, Mo



Fults, Il

Damage Surveys

Reynolds County, MO to Perry County, MO

- Tornado 1: F2
34 Mile Path Length
- Tornado 2: F1
1 Mile Path Length
- Tornado 3: F1
8.5 Mile Path Length
- Tornado 4: F3
57 Mile Path Length
- 2 Fatalities and 12 Injuries Overall



Chloride, Mo



Patterson Mountain, Mo



Mine La Motte, Mo



Minnith, Mo



Kaskaskia Island, Il

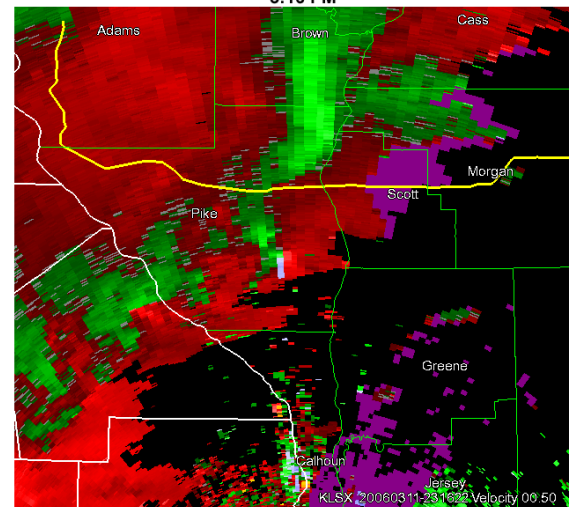
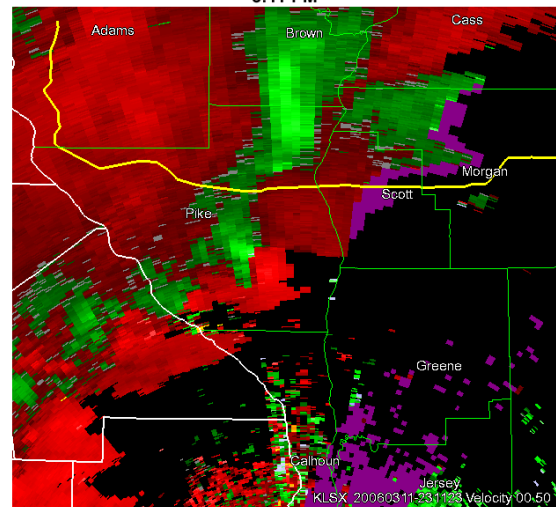
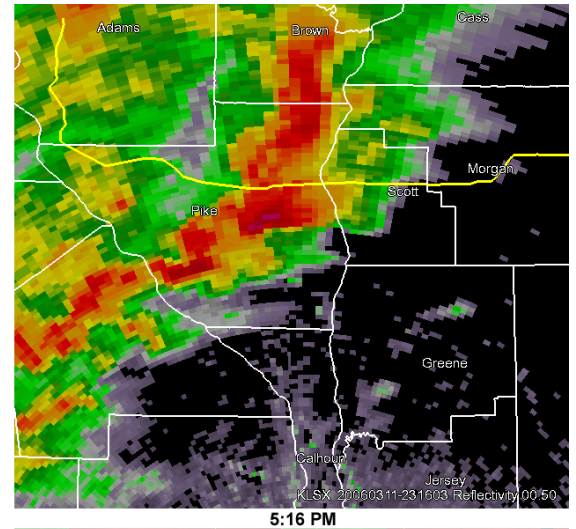
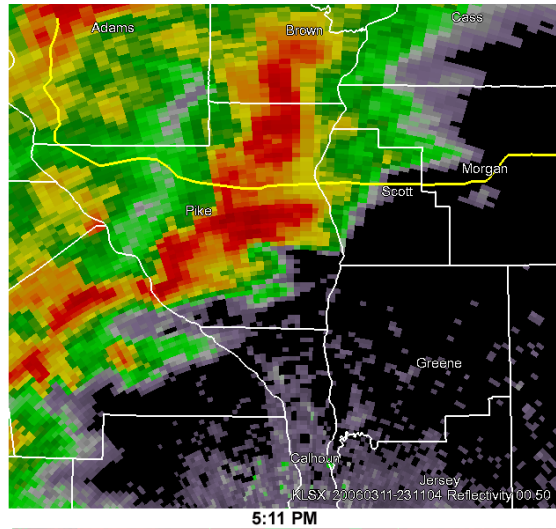


Steeleville, Mo

Damage Surveys

Pike County, IL

- 2 Tornado Touchdowns
- F0 Damage
- No Fatalities or Injuries



Pittsfield, IL

Please note that while the severe weather data presented in this event synopsis has been quality controlled, it is still considered unofficial. Official reports & statistics for severe weather events can be found in the **Storm Data** publication (<http://www.ncdc.noaa.gov/IPS/sd/sd.html>) or **Storm Events Database** (<http://www.ncdc.noaa.gov/stormevents/>), available from the National Centers for Environmental Information (NCEI) web page [formerly the National Climate Data Center (NCDC)].

More detailed tornado track information can be accessed using the National Weather Service Damage Assessment Toolkit for all tornadoes beginning in 2012. <https://apps.dat.noaa.gov/StormDamage/DamageViewer/>

Any questions regarding this event review should be address to w-lsx.webmaster@noaa.gov