

### Overview

The days leading up to this severe weather event had been unseasonably warm. The southerly winds responsible for these warm temperatures also advected increasingly moist and unstable air into the central United States over the preceding 2 days.

A cold front that pushed across the area on Wednesday became stationary over southern Missouri and Illinois Thursday morning. Low pressure then formed over the Plains and began moving east, causing the front to move north as a warm front. The wind shear produced by this pattern, as well as the unstable air that had worked into the area earlier in the week, helped to produce the severe weather.

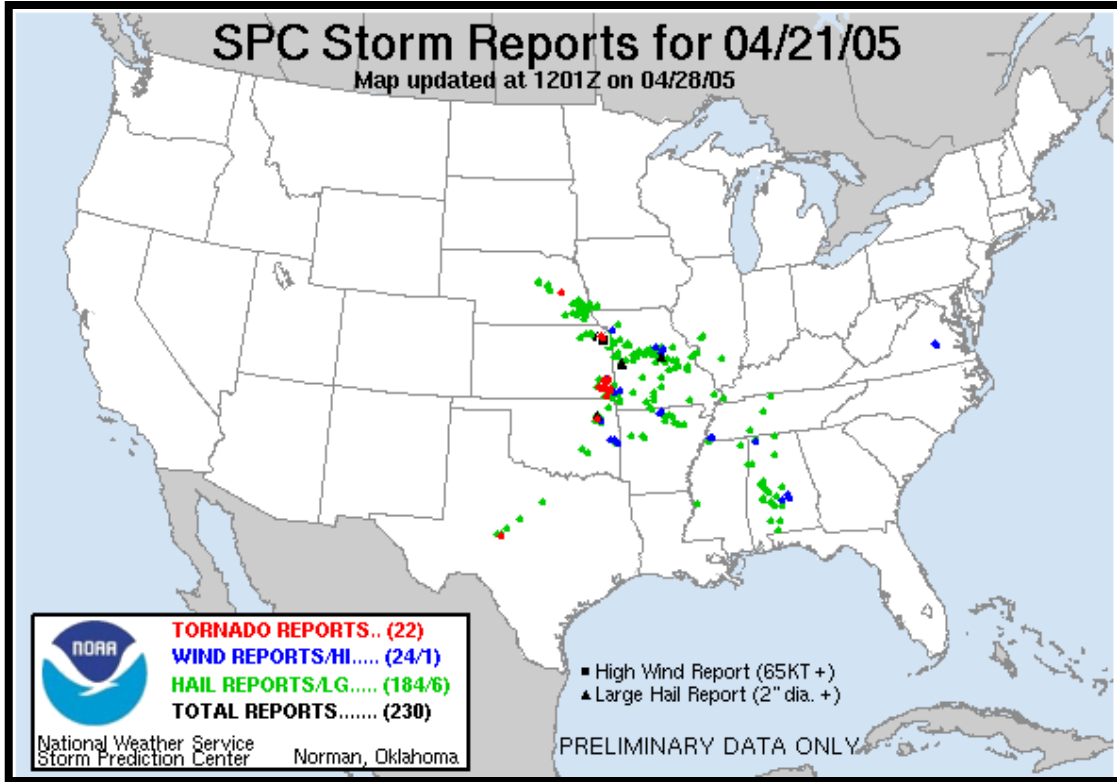
During the late afternoon and early evening hours, individual thunderstorms were responsible for the severe weather threat. One of these storms produced up to baseball sized hail, and possibly a brief tornado touchdown, over parts of central Missouri.

Later in the evening, the storms evolved into a solid line that moved across the eastern half of Missouri and southern sections of Illinois. One part of this line produced winds of 40 to 50 mph along Interstate 70 between Columbia and St. Charles, MO. This part of the line accelerated rapidly, and this bowing segment can clearly be seen in the radar data.

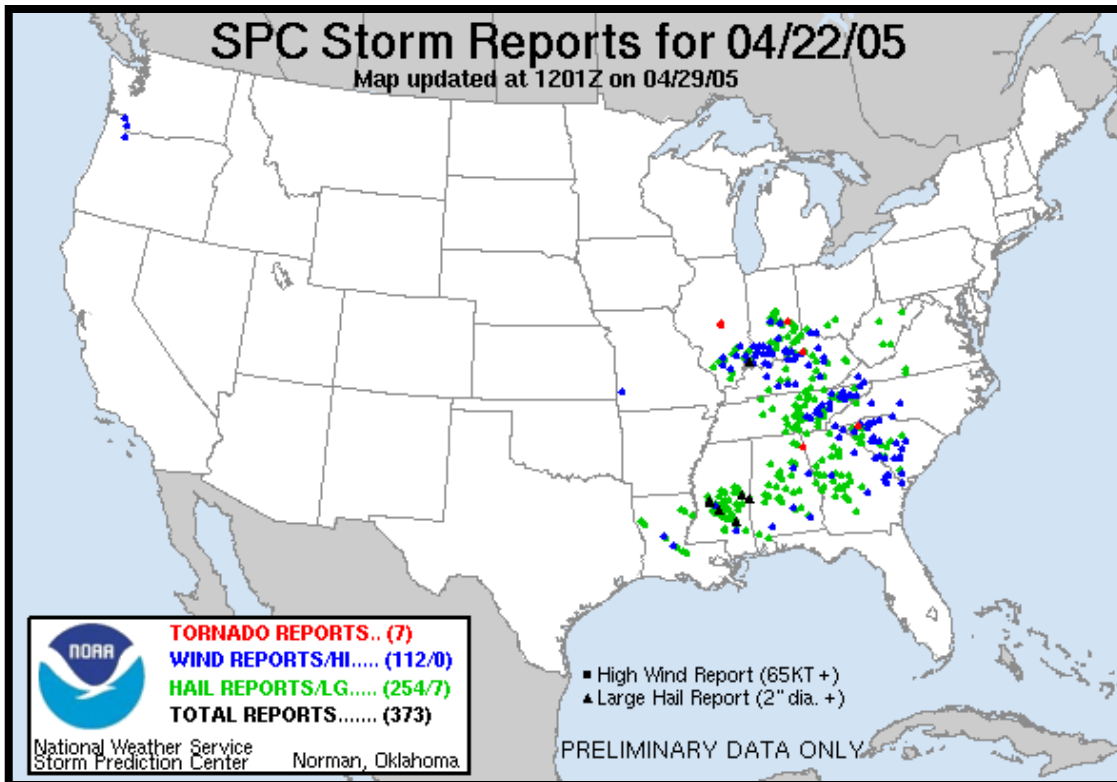


Hail photos from Bonnots Mill, MO in Northern Osage County

# Storm Reports



Storm Reports from 21 April 2005 courtesy of the Storm Prediction Center.



Storm Reports from 22 April 2005 courtesy of the Storm Prediction Center.

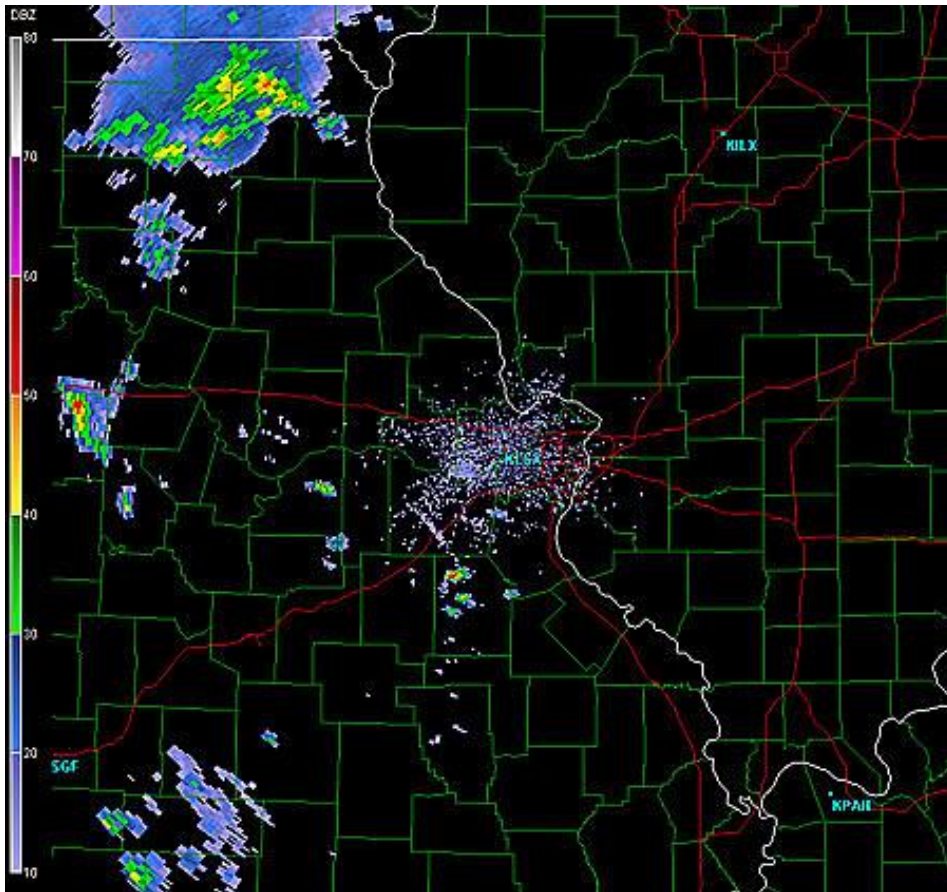
## Preliminary Storm Reports for April 21<sup>st</sup>, 2005:

TIME (DATE)	LOCATION (COUNTY)	EVENT	REMARKS
0400 PM (04/21/2005)	JAMESTOWN (MONITEAU MO)	1.25 INCH HAIL	REPORTED BY STORM CHASER
0410 PM (04/21/2005)	JAMESTOWN (MONITEAU MO)	1.00 INCH HAIL	LAW ENFORCEMENT
0435 PM (04/21/2005)	3 S ASHLAND (BOONE MO)	1.75 INCH HAIL	EMERGENCY MNGR
0505 PM (04/21/2005)	2 NE WAINWRIGHT (CALLAWAY MO)	2.00 INCH HAIL	VEHICLES DAMAGED
0505 PM (04/21/2005)	2 NW WAINWRIGHT (CALLAWAY MO)	2.50 INCH HAIL	WINDOWS ON VEHICLE BROKEN
0510 PM (04/21/2005)	LAKE MYKEE (CALLAWAY MO)	1.75 INCH HAIL	REPORTED BY STORM CHASER
0512 PM (04/21/2005)	TEBBETTS (CALLAWAY MO)	1.75 INCH HAIL	VEHICLES WERE DAMAGED
0520 PM (04/21/2005)	OWENSVILLE (GASCONADE MO)	1.00 INCH HAIL	TRAINED SPOTTER
0601 PM (04/21/2005)	LINN (OSAGE MO)	1.75 INCH HAIL	LAW ENFORCEMENT
0605 PM (04/21/2005)	LINN (OSAGE MO)	1.00 INCH HAIL	LAW ENFORCEMENT
0625 PM (04/21/2005)	2 NE HIGH RIDGE (JEFFERSON MO)	FLASH FLOOD	SOME FLOODING
0720 PM (04/21/2005)	FENTON (ST. LOUIS MO)	1.75 INCH HAIL	HAIL
0720 PM (04/21/2005)	OAKVILLE (ST. LOUIS MO)	FLASH FLOOD	ROADS FLOODED
0755 PM (04/21/2005)	COLUMBIA (BOONE MO)	1.00 INCH HAIL	LAW ENFORCEMENT
0805 PM (04/21/2005)	BRAZITO (COLE MO)	FLASH FLOOD	NUMEROUS ROADS FLOODED.
0815 PM (04/21/2005)	POTOSI (WASHINGTON MO)	1.00 INCH HAIL	LAW ENFORCEMENT
0815 PM (04/21/2005)	BRAZITO (COLE MO)	1.00 INCH HAIL	REPORTED BY TRAINED SPOTTER
0817 PM (04/21/2005)	BRAZITO (COLE MO)	1.75 INCH HAIL	REPORTED BY FIRE DEPT/RESCUE
0820 PM (04/21/2005)	5 SW CARLINVILLE (MACOUPIN IL)	1.75 INCH HAIL	EMERGENCY MNGR
0835 PM (04/21/2005)	5 W CARLINVILLE (MACOUPIN IL)	1.75 INCH HAIL	EMERGENCY MNGR
0835 PM (04/21/2005)	CARLINVILLE (MACOUPIN IL)	1.00 INCH HAIL	EMERGENCY MNGR
0910 PM (04/21/2005)	FULTON (CALLAWAY MO)	1.25 INCH HAIL	HAIL REPORTED IN MILLERSBURG
0940 PM (04/21/2005)	FULTON (CALLAWAY MO)	1.00 INCH HAIL	DIME SIZE HAIL
1015 PM (04/21/2005)	COLUMBIA (BOONE MO)	TSTM WND DMG	POWER LINES REPORTED DOWN

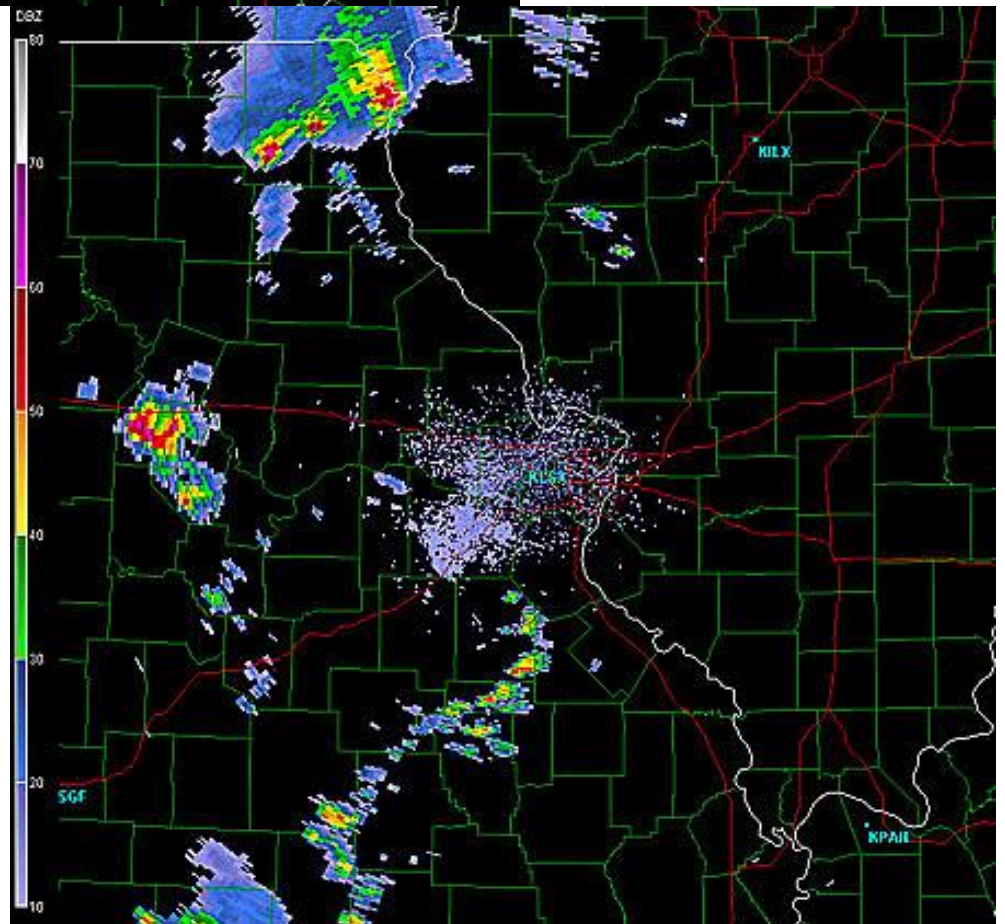
## Preliminary Storm Reports for April 21<sup>st</sup>, 2005:

1015 PM (04/21/2005)	COLUMBIA (BOONE MO)	TSTM WND DMG	TREE LIMBS DOWN
1020 PM (04/21/2005)	3 N HOLTS (CALLAWAY MO)	TSTM WND DMG	POWER LINES DOWN
1020 PM (04/21/2005)	3 N HOLTS (CALLAWAY MO)	1.00 INCH HAIL	TRAINED SPOTTER
1035 PM (04/21/2005)	ST. MARTINS (COLE MO)	1.00 INCH HAIL	LAW ENFORCEMENT
1035 PM (04/21/2005)	3 W JEFFERSON CITY (COLE MO)	1.00 INCH HAIL	TRAINED SPOTTER
1045 PM (04/21/2005)	JEFFERSON CITY (COLE MO)	0.75 INCH HAIL	LAW ENFORCEMENT
1052 PM (04/21/2005)	NEW BLOOMFIELD (CALLAWAY MO)	TSTM WND DMG	POWER LINES DOWN

# Radar Data

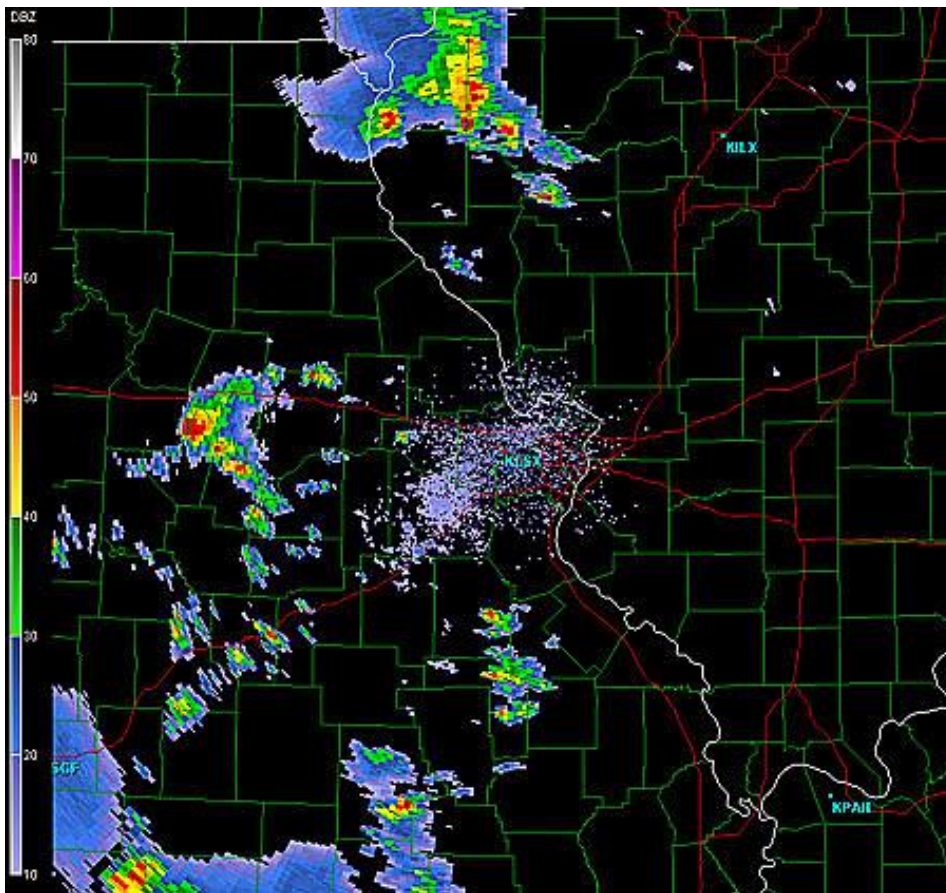


April 21<sup>st</sup>, 2005 - 02:05 PM

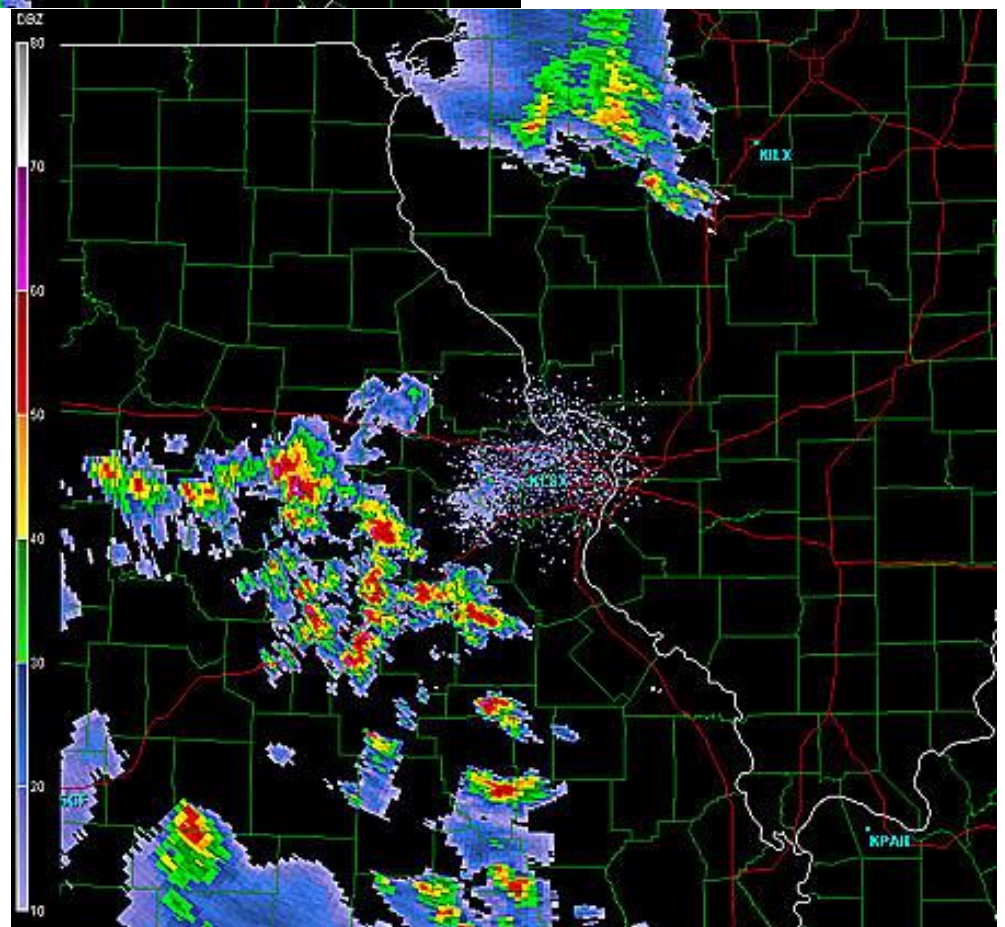


April 21<sup>st</sup>, 2005 - 03:05 PM

# Radar Data

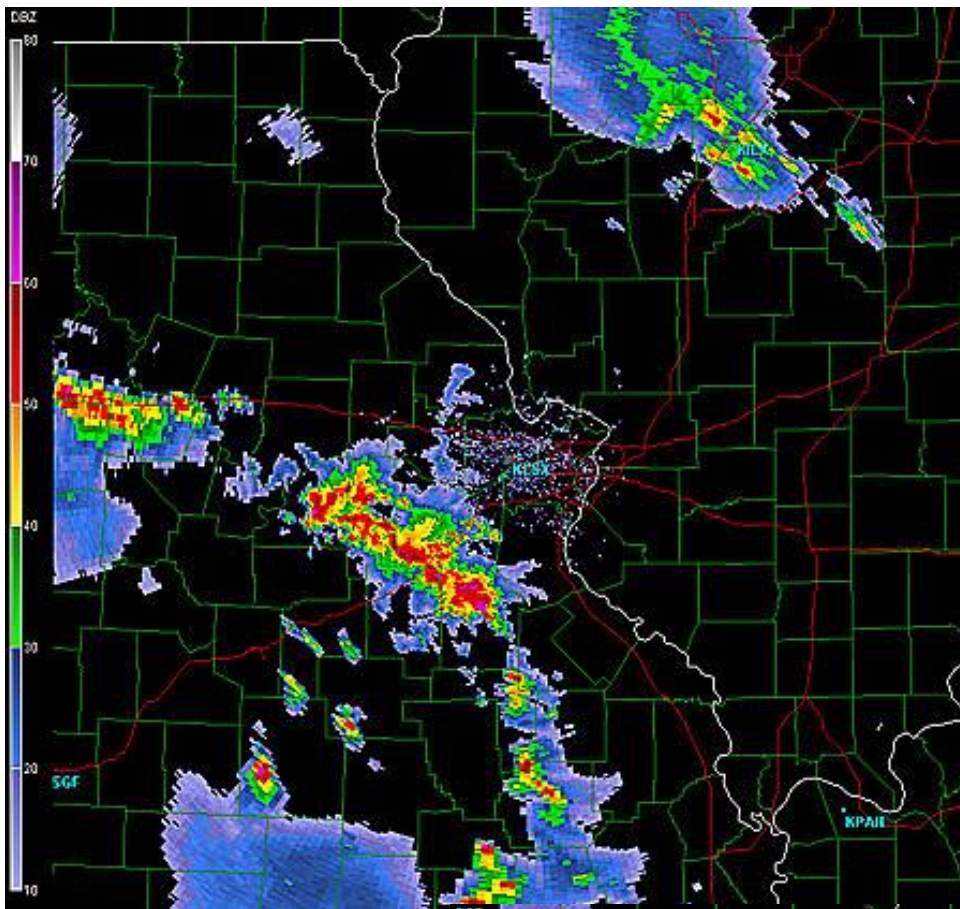


April 21<sup>st</sup>, 2005 - 04:05 PM

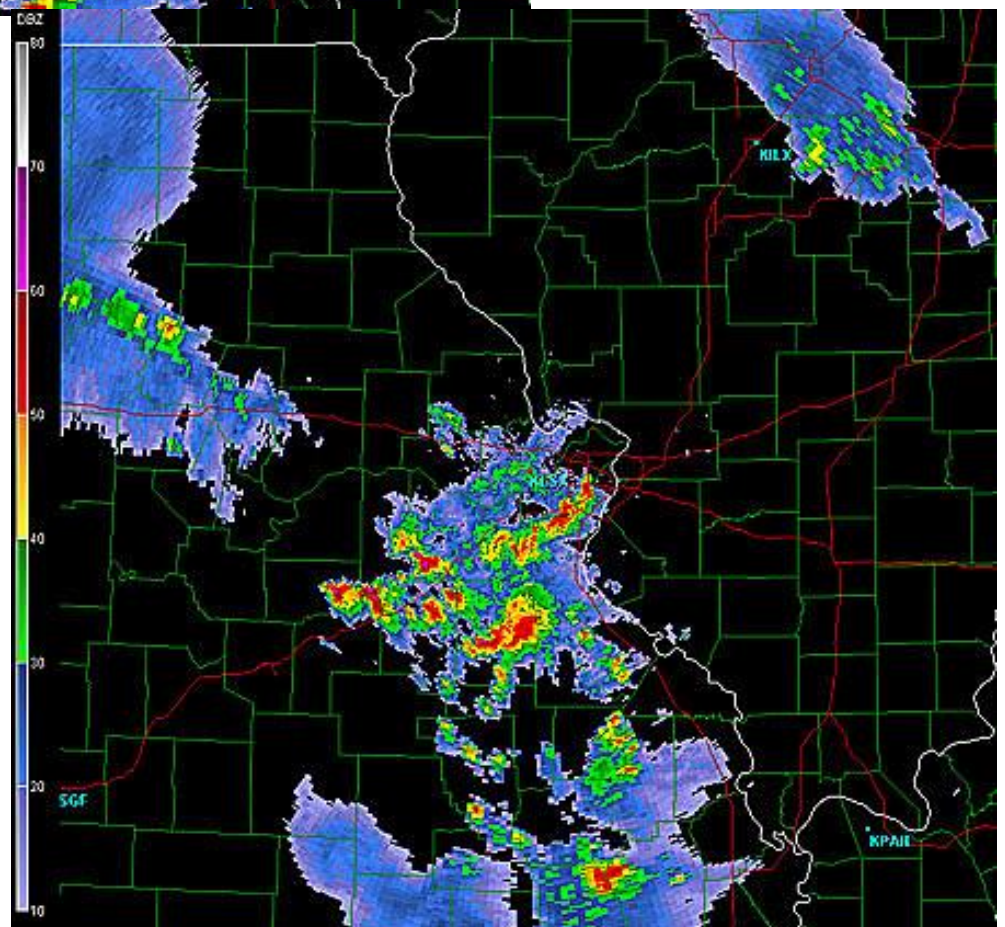


April 21<sup>st</sup>, 2005 - 05:05 PM

# Radar Data

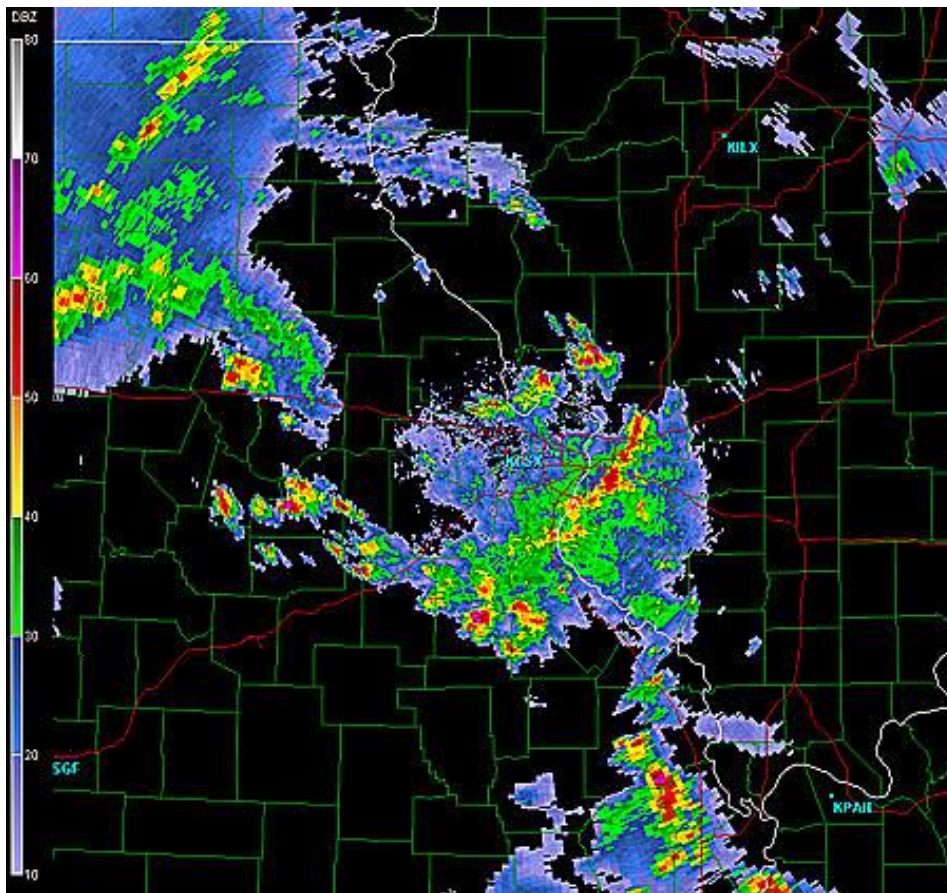


April 21<sup>st</sup>, 2005 - 06:05 PM

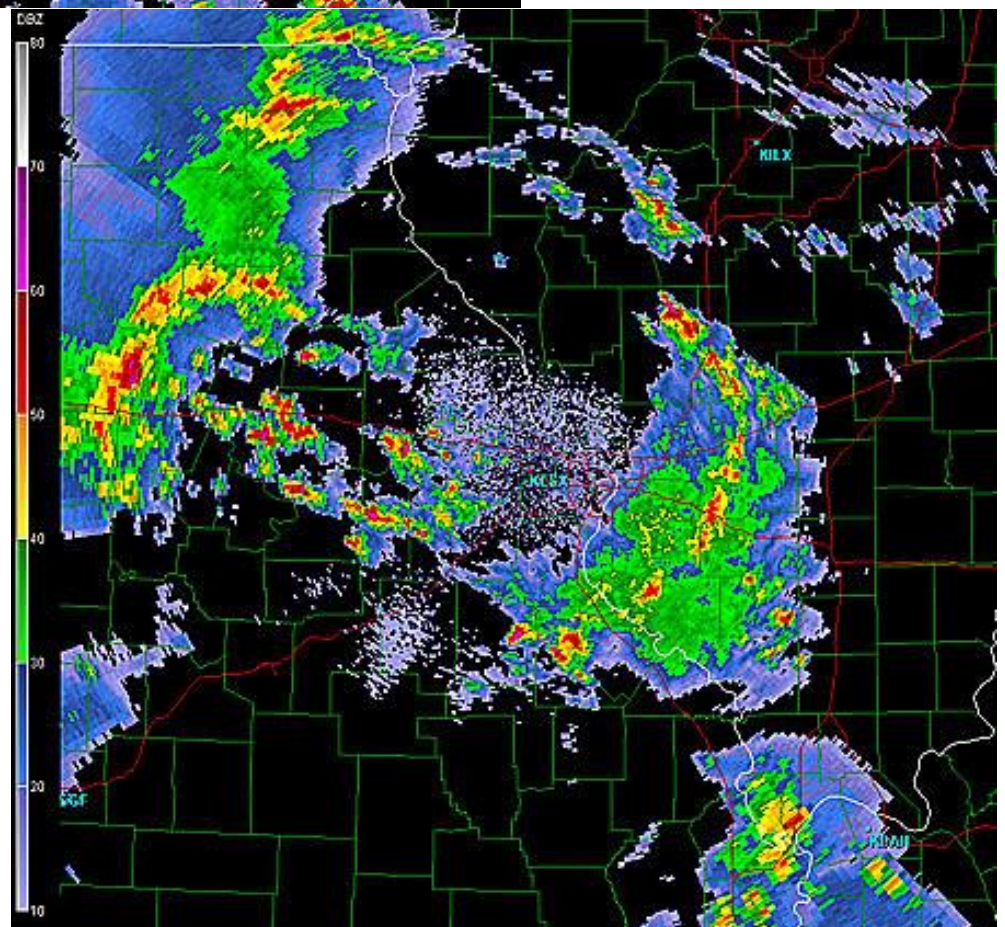


April 21<sup>st</sup>, 2005 - 07:05 PM

# Radar Data



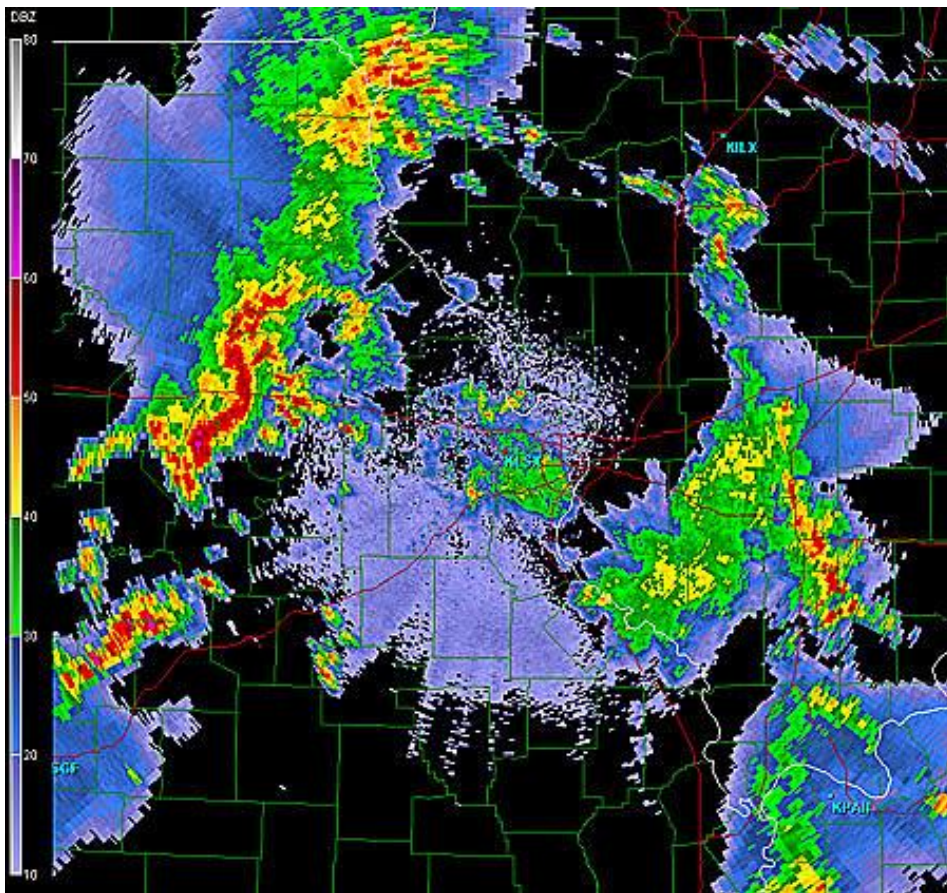
April 21<sup>st</sup>, 2005 - 08:05 PM



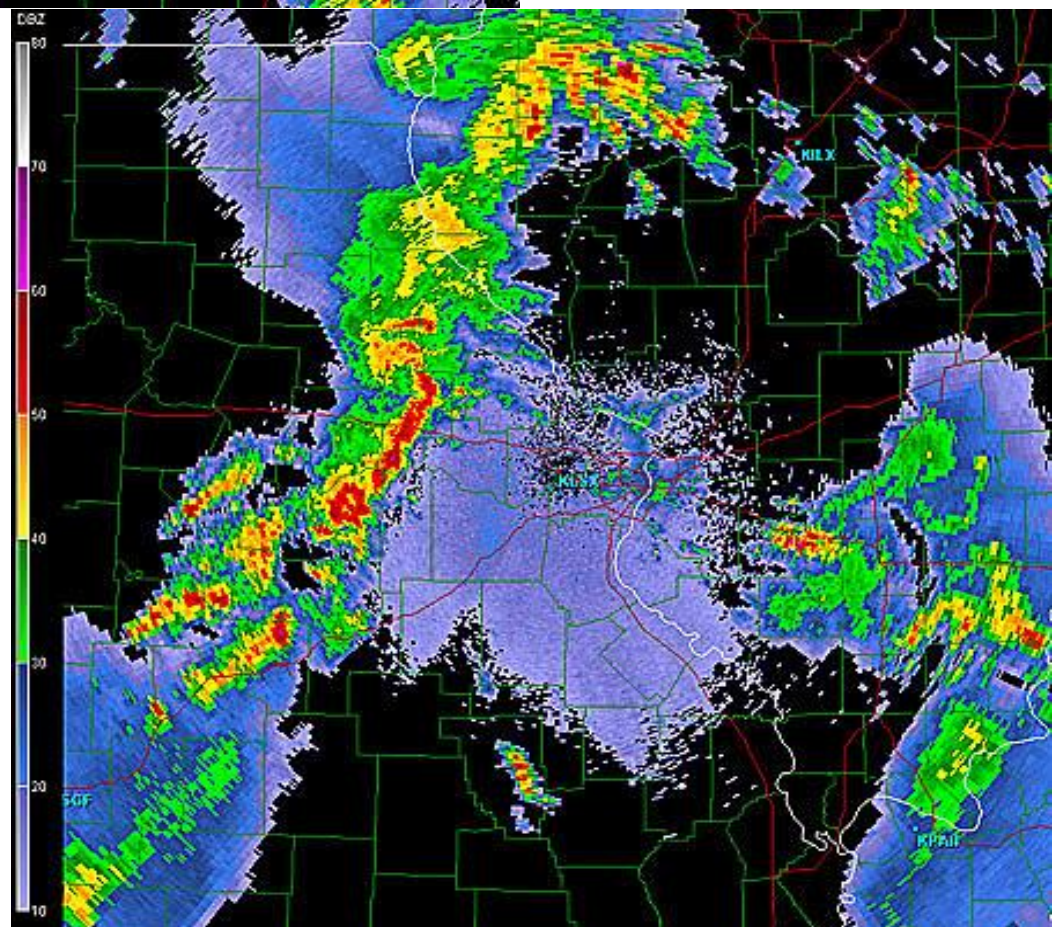
April 21<sup>st</sup>, 2005 - 09:05 PM



# Radar Data

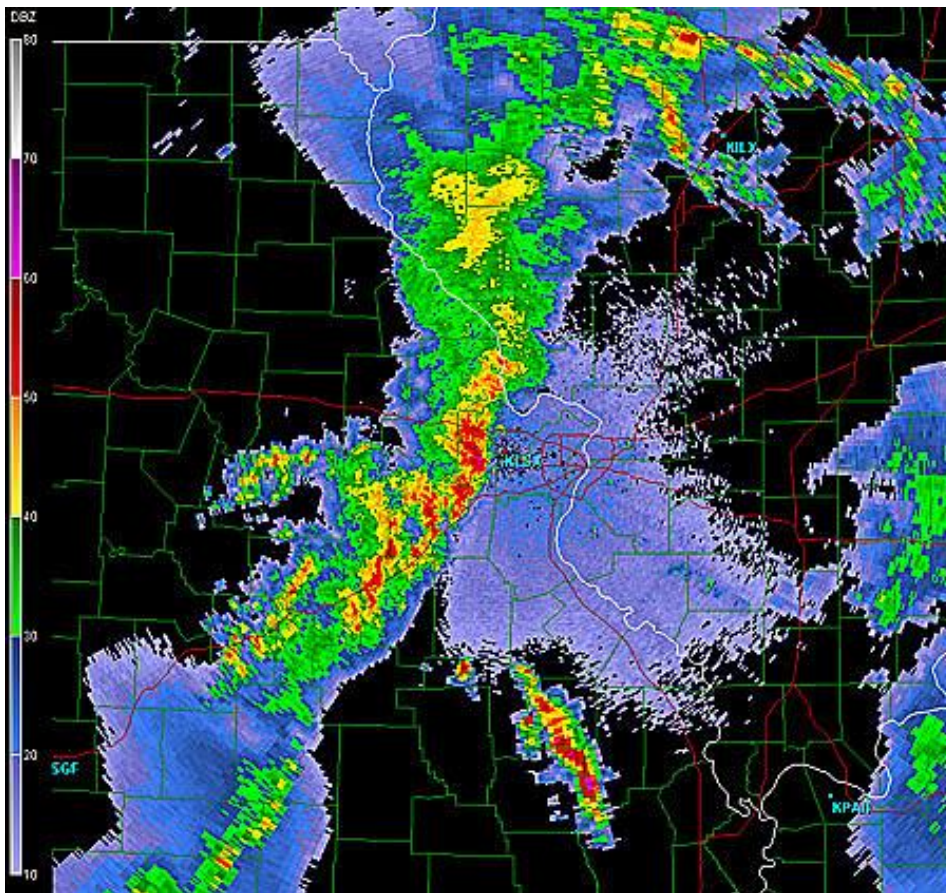


April 21<sup>st</sup>, 2005 - 10:05 PM



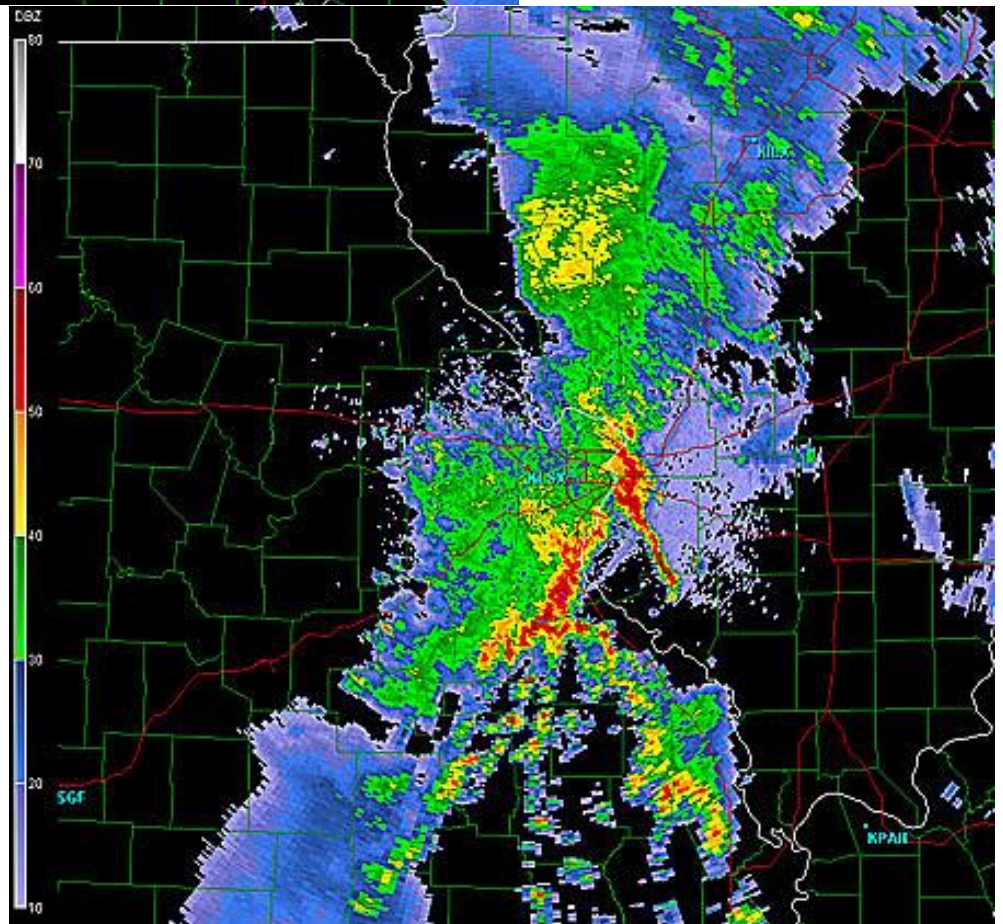
April 21<sup>st</sup>, 2005 - 11:05 PM

# Radar Data

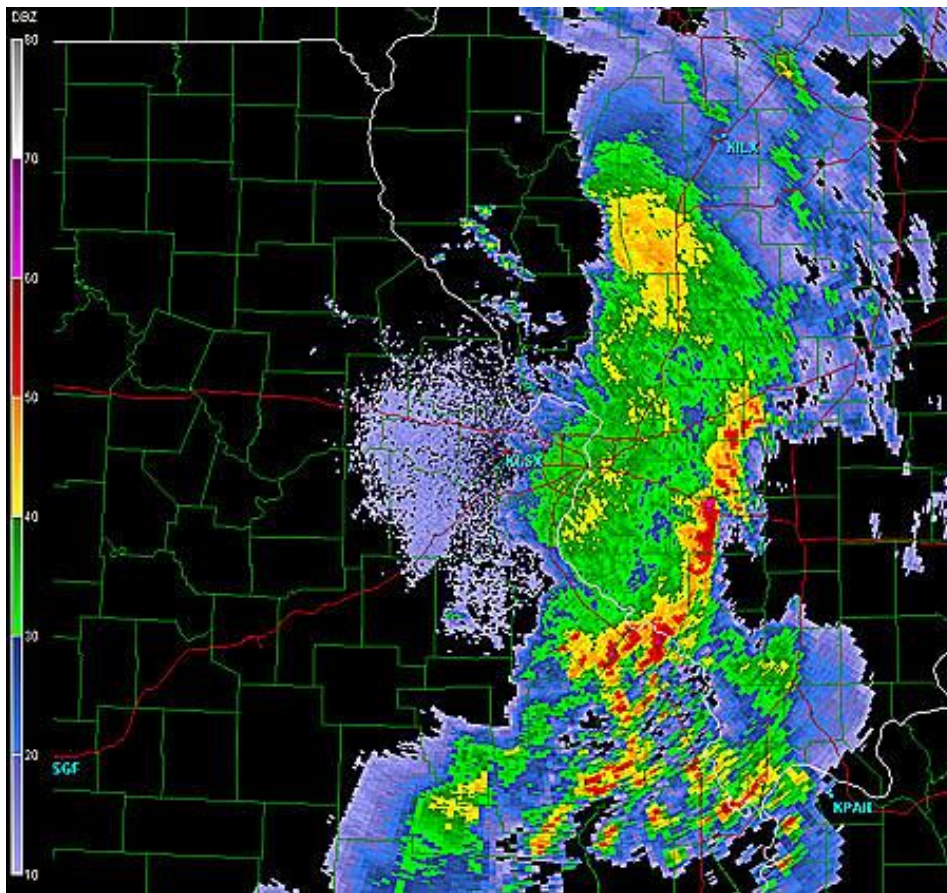


April 22<sup>nd</sup>, 2005 - 12:05 AM

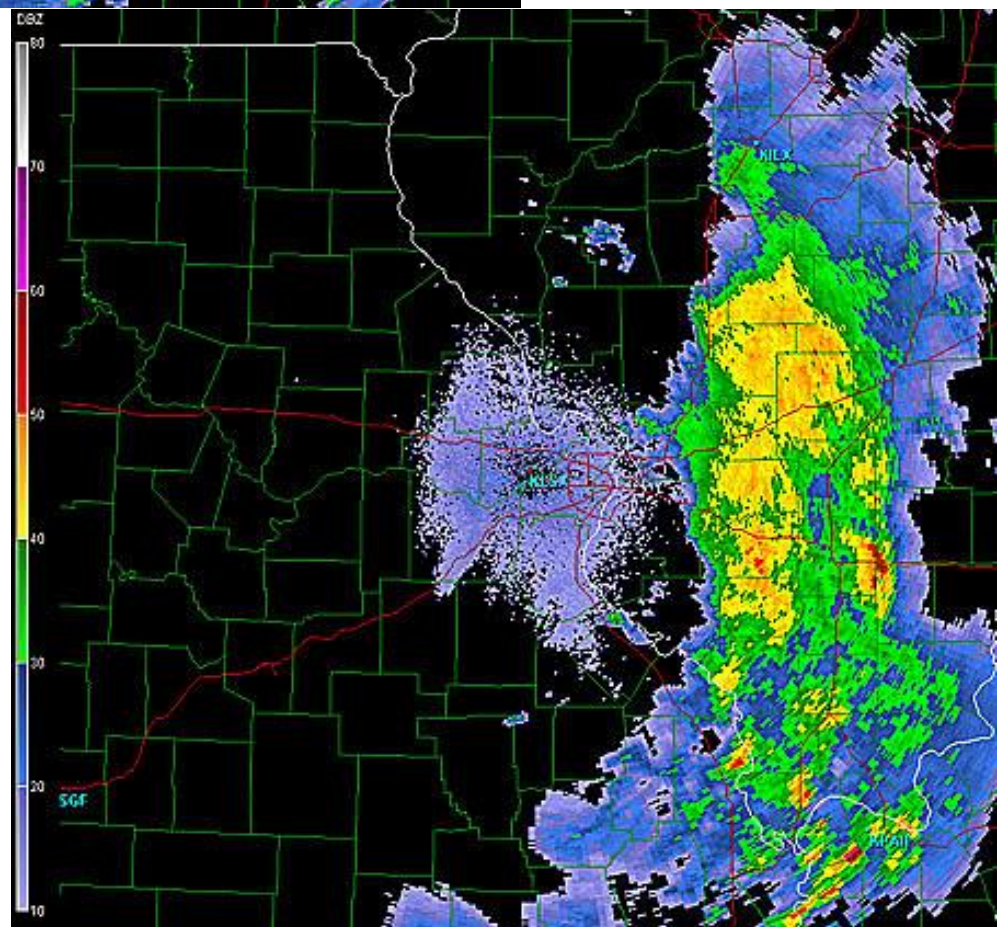
April 22<sup>nd</sup>, 2005 - 01:05 AM



# Radar Data



April 22<sup>nd</sup>, 2005 - 02:05 AM



April 22<sup>nd</sup>, 2005 - 03:05 AM

Please note that while the severe weather data presented in this event synopsis has been quality controlled, it is still considered unofficial. Official reports & statistics for severe weather events can be found in the **Storm Data** publication (<http://www.ncdc.noaa.gov/IPS/sd/sd.html>) or **Storm Events Database** (<http://www.ncdc.noaa.gov/stormevents/>), available from the National Centers for Environmental Information (NCEI) web page [formerly the National Climate Data Center (NCDC)].

More detailed tornado track information can be accessed using the National Weather Service Damage Assessment Toolkit for all tornadoes beginning in 2012. <https://apps.dat.noaa.gov/StormDamage/DamageViewer/>

***Any questions regarding this event review should be address to [w-lsx.webmaster@noaa.gov](mailto:w-lsx.webmaster@noaa.gov)***