

Hail, Damaging Winds, and Tornado Event

May 11th, 2005

Overview

Early Wednesday afternoon a weak surface boundary extended across central Missouri through southwest Illinois. South of the surface boundary, very warm and unstable air fed northward towards the frontal boundary while slightly cooler and less humid conditions prevailed north of the boundary across north-central Missouri through west-central Illinois.

Clusters of severe thunderstorms ignited along the boundary across central and east-central Missouri. Later in the afternoon a secondary cold front extending across Central Illinois through Northeast Missouri moved southward and triggered severe thunderstorms over parts of west-central and southwest Illinois.



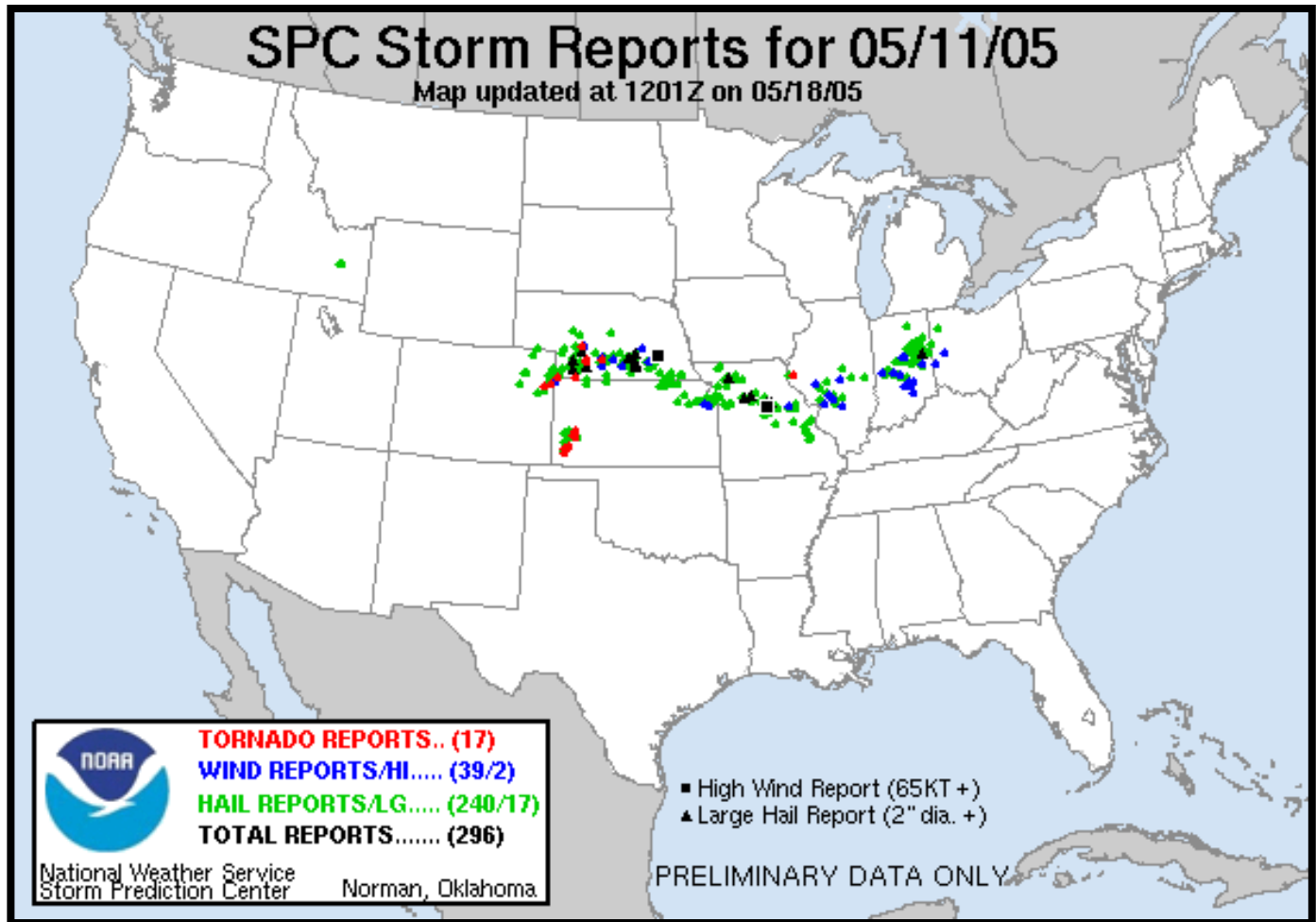
Hailstones 7 N of Columbia in Boone County around 2:30 PM

Hailstone along Route E 5 N of Columbia



Weak Tornado in East Central Adams County, IL near Camp Point around 6:35 pm

Storm Reports



Storm Reports from 11 May 2005 courtesy of the Storm Prediction Center.

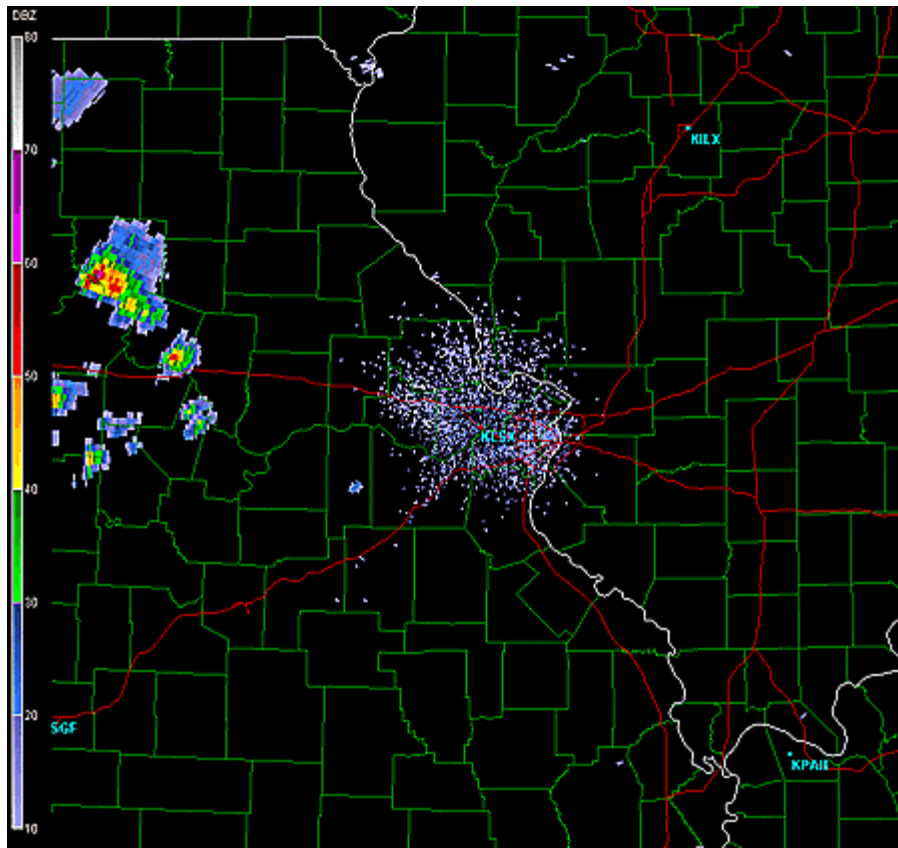
Preliminary Storm Reports for May 11th:

TIME (DATE)	LOCATION (COUNTY)	EVENT	REMARKS
0220 PM (05/11/2005)	HARRISBURG (BOONE MO)	4.25 INCH HAIL	REPORTED BY LAW ENFORCEMENT
0230 PM (05/11/2005)	7SE HARRISBURG (BOONE MO)	FUNNEL CLOUD	REPORTED BY PUBLIC AT ROUTE E
0240 PM (05/11/2005)	4 E HARRISBURG (BOONE MO)	1.75 INCH HAIL	REPORTED BY COUNTY OFFICIAL
0245 PM (05/11/2005)	7N COLUMBIA (BOONE MO)	2.00 INCH HAIL	LEMON SIZE HAIL
0246 PM (05/11/2005)	5S COLUMBIA (BOONE MO)	1.75 INCH HAIL	REPORTED BY TRAINED SPOTTER
0251 PM (05/11/2005)	3N COLUMBIA (BOONE MO)	FUNNEL CLOUD	ROTATION WITH WALL CLOUD
0257 PM (05/11/2005)	POTOSI (WASHINGTON MO)	1.00 INCH HAIL	REPORTED BY TRAINED SPOTTER
0310 PM (05/11/2005)	4N COLUMBIA (BOONE MO)	FUNNEL CLOUD	REPORTED BY COUNTY OFFICIAL
0320 PM (05/11/2005)	HARRISBURG (BOONE MO)	4.25 INCH HAIL	REPORTED BY KMIZ
0330 PM (05/11/2005)	MIDWAY (BOONE MO)	TSTM WND GUST	LAW ENFORCEMENT THRU KMIZ
0335 PM (05/11/2005)	10NW FULTON (CALLAWAY MO)	1.00 INCH HAIL	QUARTER SIZE HAIL
0344 PM (05/11/2005)	OLD MINES (WASHINGTON MO)	1.00 INCH HAIL	REPORTED BY TRAINED SPOTTER
0344 PM (05/11/2005)	HALLSVILLE (BOONE MO)	2.75 INCH HAIL	REPORTED BY COUNTY OFFICIAL
0409 PM (05/11/2005)	FULTON (CALLAWAY MO)	1.75 INCH HAIL	REPORTED BY COUNTY OFFICIAL
0420 PM (05/11/2005)	DITTMER (JEFFERSON MO)	1.75 INCH HAIL	REPORTED BY AMATEUR RADIO
0425 PM (05/11/2005)	COLUMBIA (BOONE MO)	FLOOD	1 FOOT OF WATER OVER I-70
0435 PM (05/11/2005)	(JEFFERSON MO)	1.75 INCH HAIL	GOLF BALL SIZED HAIL.
0505 PM (05/11/2005)	COLUMBIA (BOONE MO)	1.00 INCH HAIL	REPORTED BY COUNTY SHERIFF
0525 PM (05/11/2005)	COLUMBIA (BOONE MO)	FLASH FLOOD	6 INCHES OF WATER ON BROADWAY
0540 PM (05/11/2005)	(MONTGOMERY MO)	TSTM WND DMG	TREE LIMBS RIPPED OFF OF TREES
0540 PM (05/11/2005)	COLUMBIA (BOONE MO)	FLASH FLOOD	LOCAL ROADS FLOODED

Preliminary Storm Reports for May 11th:

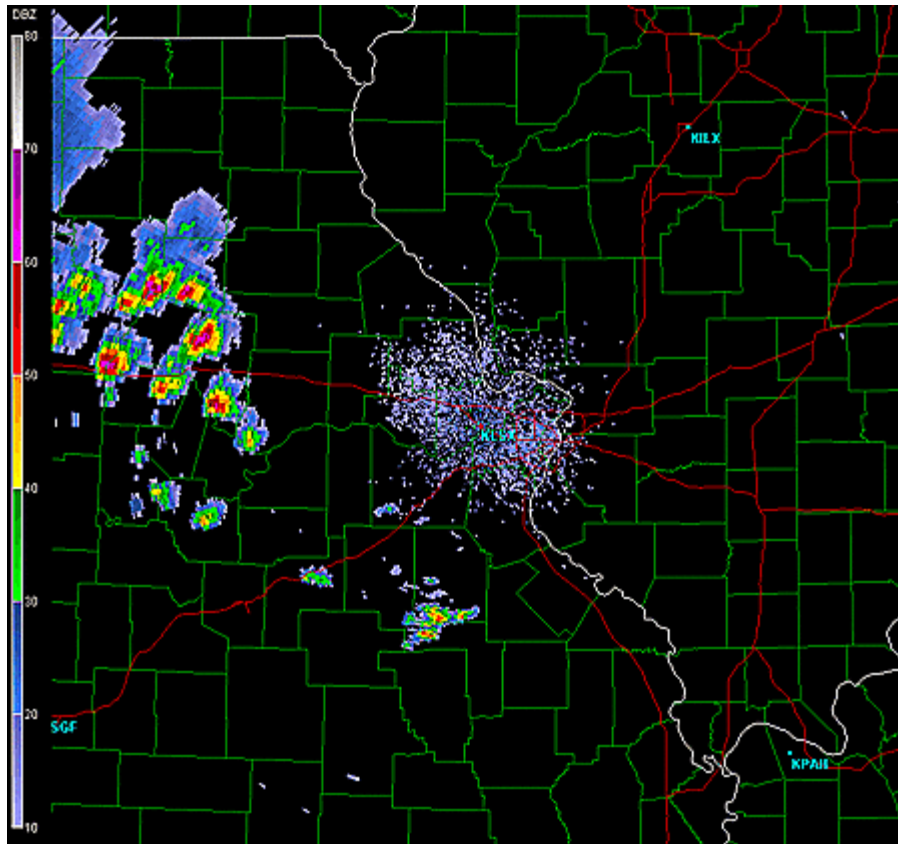
0605 PM (05/11/2005)	WARRENTON (WARREN MO)	1.75 INCH HAIL	REPORTED BY COUNTY SHERIFF
0630 PM (05/11/2005)	HAWK POINT (LINCOLN MO)	1.00 INCH HAIL	REPORTED BY TRAINED SPOTTER
0635 PM (05/11/2005)	PALOMA (ADAMS IL)	TORNADO	UNCONFIRMED FROM PUBLIC
0635 PM (05/11/2005)	LIBERTY (ADAMS IL)	FUNNEL CLOUD	REPORTED BY PUBLIC
0645 PM (05/11/2005)	PALOMA (ADAMS IL)	TSTM WND DMG	ROOFI BLOWN OFF A FARMHOUSE
0820 PM (05/11/2005)	LITCHFIELD (MONTGOMERY IL)	1.00 INCH HAIL	REPORTED BY AMATEUR RADIO
0820 PM (05/11/2005)	(MONTGOMERY IL)	TSTM WND DMG	LARGE TREE BLOWN ONTO HOUSE
0825 PM (05/11/2005)	(MACOUPIN IL)	1.00 INCH HAIL	REPORTED BY TRAINED SPOTTER
0827 PM (05/11/2005)	LITCHFIELD (MONTGOMERY IL)	TSTM WND GUST	REPORTED BY AWOS
0830 PM (05/11/2005)	LITCHFIELD (MONTGOMERY IL)	TSTM WND DMG	LARGE TREES DAMAGED
0840 PM (05/11/2005)	(MONTGOMERY IL)	NON-TSTM WND GSD	DONNELLSON POLICE DEPT
0840 PM (05/11/2005)	(MONTGOMERY IL)	TSTM WND DMG	TREES DOWNED
0840 PM (05/11/2005)	HILLSBORO (MONTGOMERY IL)	TSTM WND DMG	POWER LINES ON VEHICLE
0840 PM (05/11/2005)	(MONTGOMERY IL)	TSTM WND DMG	DOWNED POWER LINES
0850 PM (05/11/2005)	IRVING (MONTGOMERY IL)	1.00 INCH HAIL	REPORTED BY AMATEUR RADIO
0900 PM (05/11/2005)	HAMEL (MADISON IL)	TSTM WND DMG	LARGE TREE BRANCHES DOWNED
0930 PM (05/11/2005)	VERNON (MARION IL)	TSTM WND DMG	TIN TORN OFF BUILDING

Radar Data

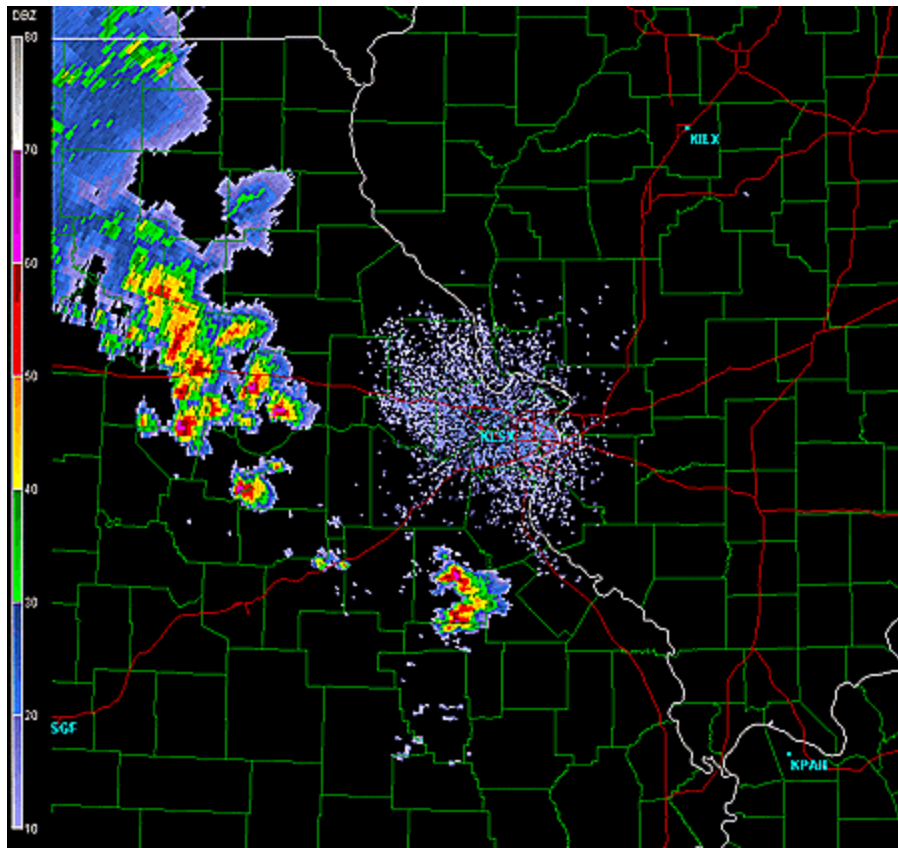


May 11th, 2005 - 01:30 PM

May 11th, 2005 - 02:30 PM

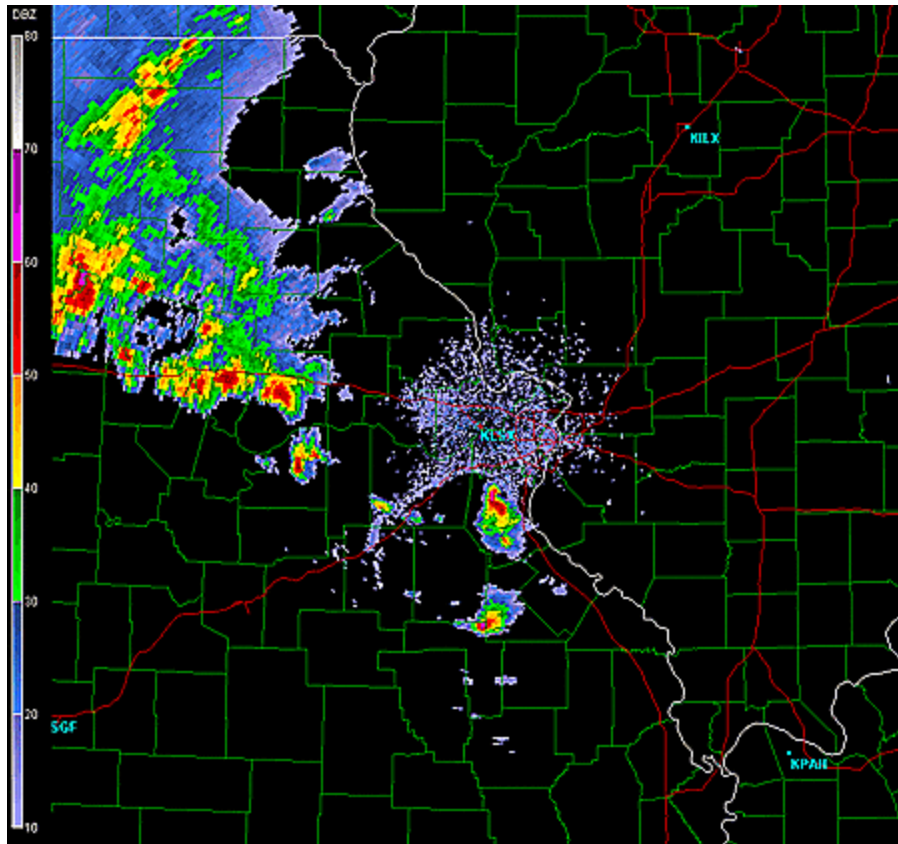


Radar Data

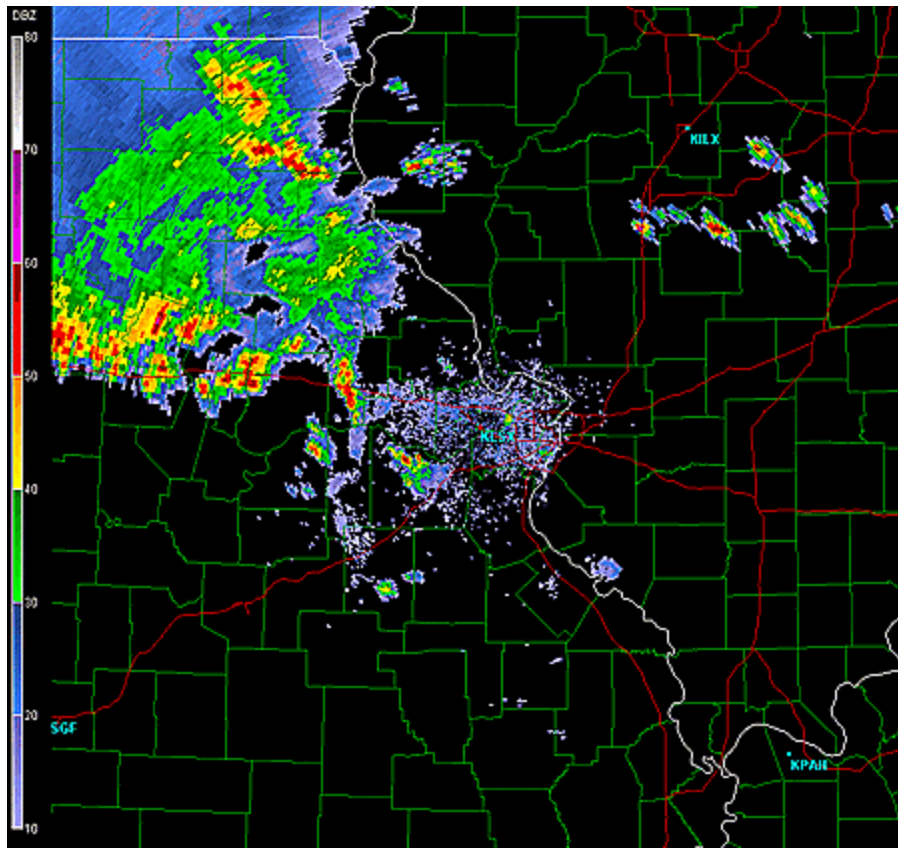


May 11th, 2005 – 03:30 PM

May 11th, 2005 - 04:30 PM

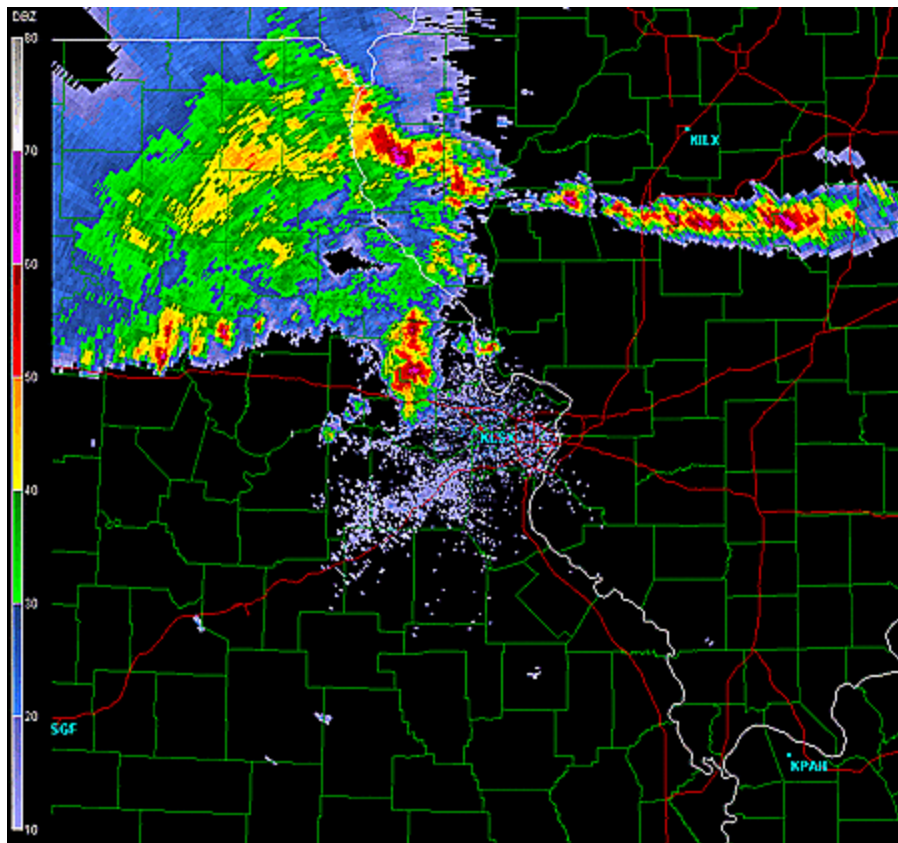


Radar Data

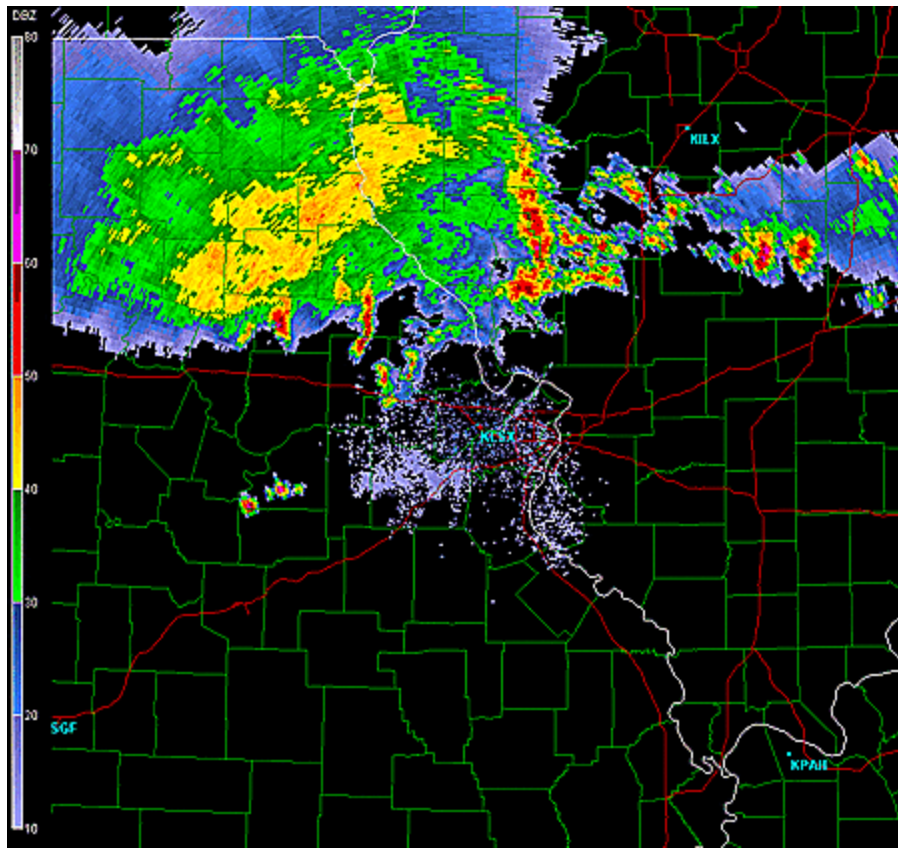


May 11th, 2005 - 05:30 PM

May 11th, 2005 - 06:30 PM

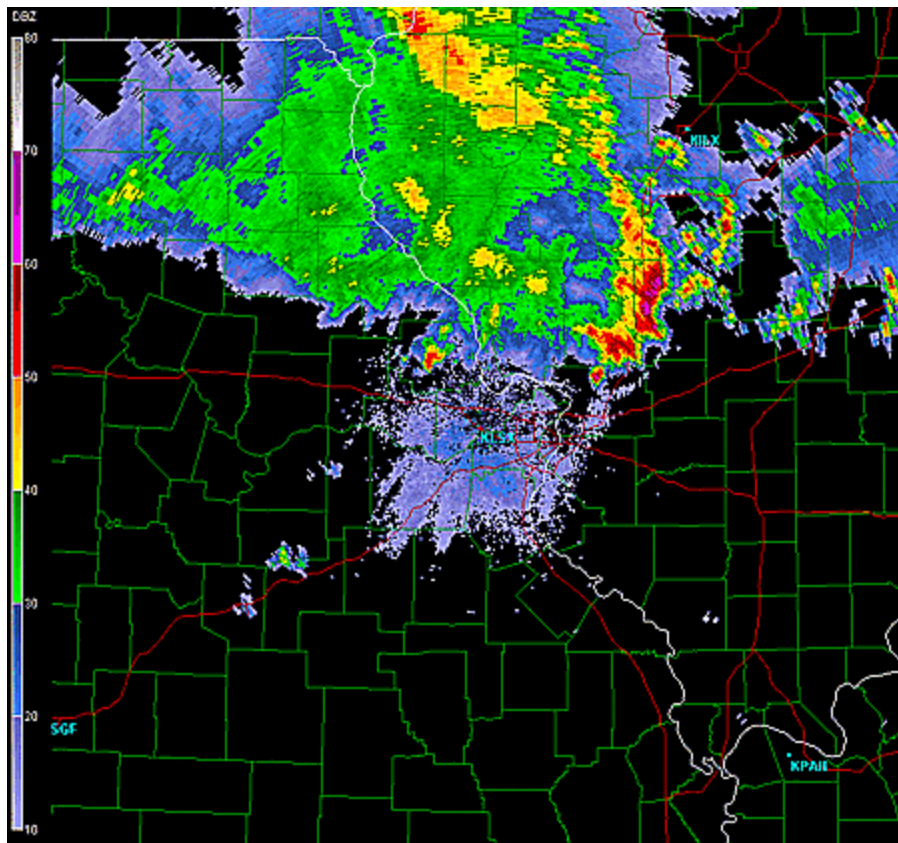


Radar Data

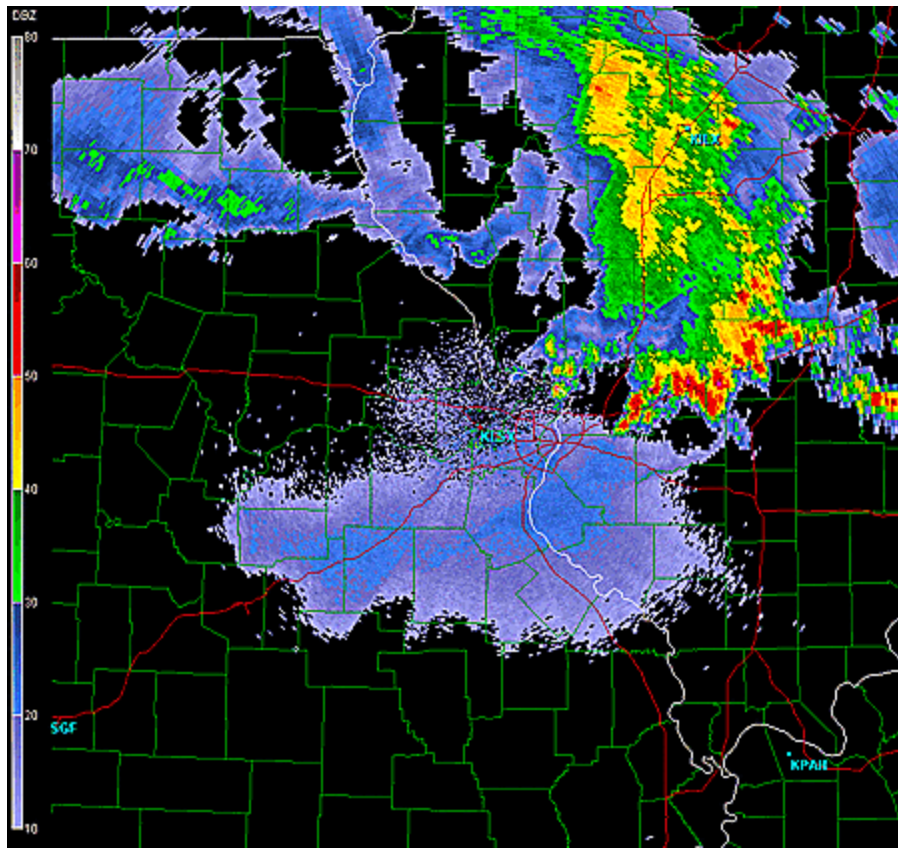


May 11th, 2005 - 07:30 PM

May 11th, 2005 - 08:30 PM

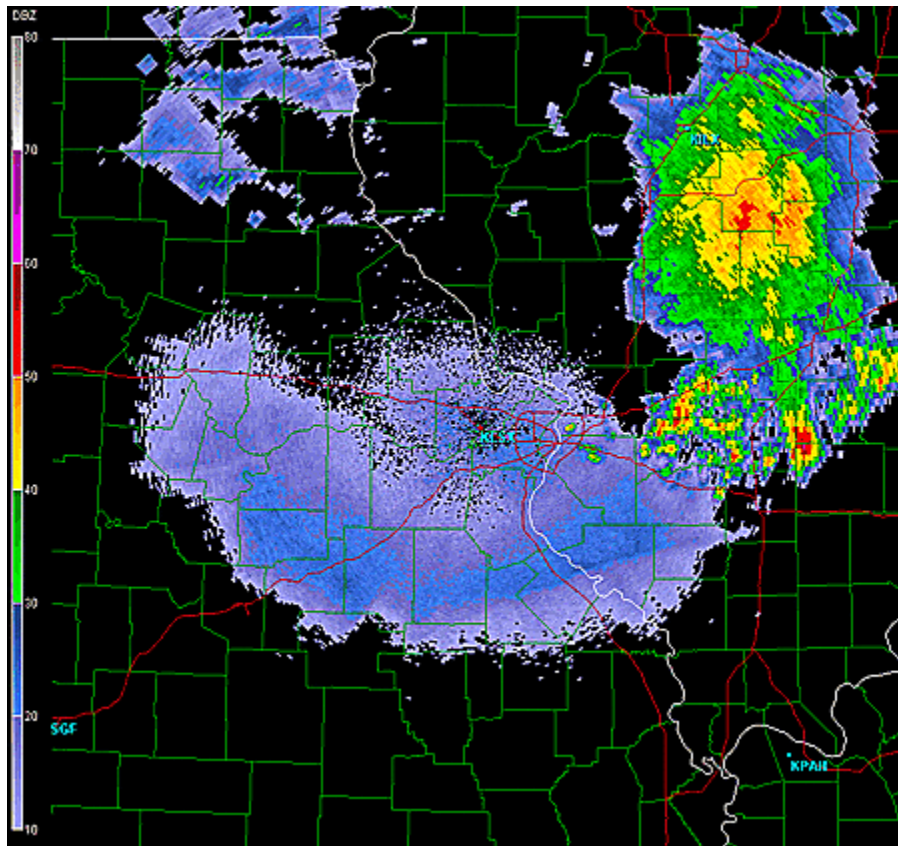


Radar Data



May 11th, 2005 - 09:30 PM

May 11th, 2005 - 10:30 PM



Please note that while the severe weather data presented in this event synopsis has been quality controlled, it is still considered unofficial. Official reports & statistics for severe weather events can be found in the **Storm Data** publication (<http://www.ncdc.noaa.gov/IPS/sd/sd.html>) or **Storm Events Database** (<http://www.ncdc.noaa.gov/stormevents/>), available from the National Centers for Environmental Information (NCEI) web page [formerly the National Climate Data Center (NCDC)].

More detailed tornado track information can be accessed using the National Weather Service Damage Assessment Toolkit for all tornadoes beginning in 2012. <https://apps.dat.noaa.gov/StormDamage/DamageViewer/>

Any questions regarding this event review should be address to w-lsx.webmaster@noaa.gov