



Rio Grande

Aerial Flood Survey

Downstream of Lajitas to Rio Grande Village

September 20, 2008



Rio Grande downstream of Lajitas – MX in background. Arrow at N29.21, W103.74



Rio Grande downstream of Lajitas. Looking upstream – MX on left side of photo.
Arrow at N29.22, W103.76
RG_09_20_08 173



Rio Grande downstream of Lajitas - MX in background.

Arrow at N29.20, W103.73

RG_09_20_08 175



Rio Grande upstream of Santa Elena Canyon – MX in background. Arrow at N29.18, W103.71 (confluence of Rio Grande – MX tributary)

RG_09_20_08 176



Rio Grande upstream of Santa Elena Canyon – MX background.
Arrow at N29.18, W103.71 (confluence of Rio Grande – MX tributary)

RG_09_20_08 177



Entrance to Santa Elena Canyon.
Arrow at N29.18, W103.71 (confluence of Rio Grande – MX tributary)
RG_09_20_08 179



Rio Grande – Entrance to Santa Elena Canyon
RG_09_20_08 180



Rio Grande – Entrance to Santa Elena Canyon (Looking upstream – MX in background)
RG_09_20_08 181



Rio Grande - Santa Elena Canyon. MX in background.
Arrow at N29.18, W103.69
RG_09_20_08 183



Rio Grande – Santa Elena Canyon (looking downstream).
Arrow at N29.17, W103.665
RG_09_20_08 184



Rio Grande – Santa Elena Canyon (looking downstream).
Arrow at N29.158, W103.65
RG_09_20_08 185



Rio Grande – Santa Elena Canyon (MX in background)

Arrow at N29.158, W103.65

RG_09_20_08 186

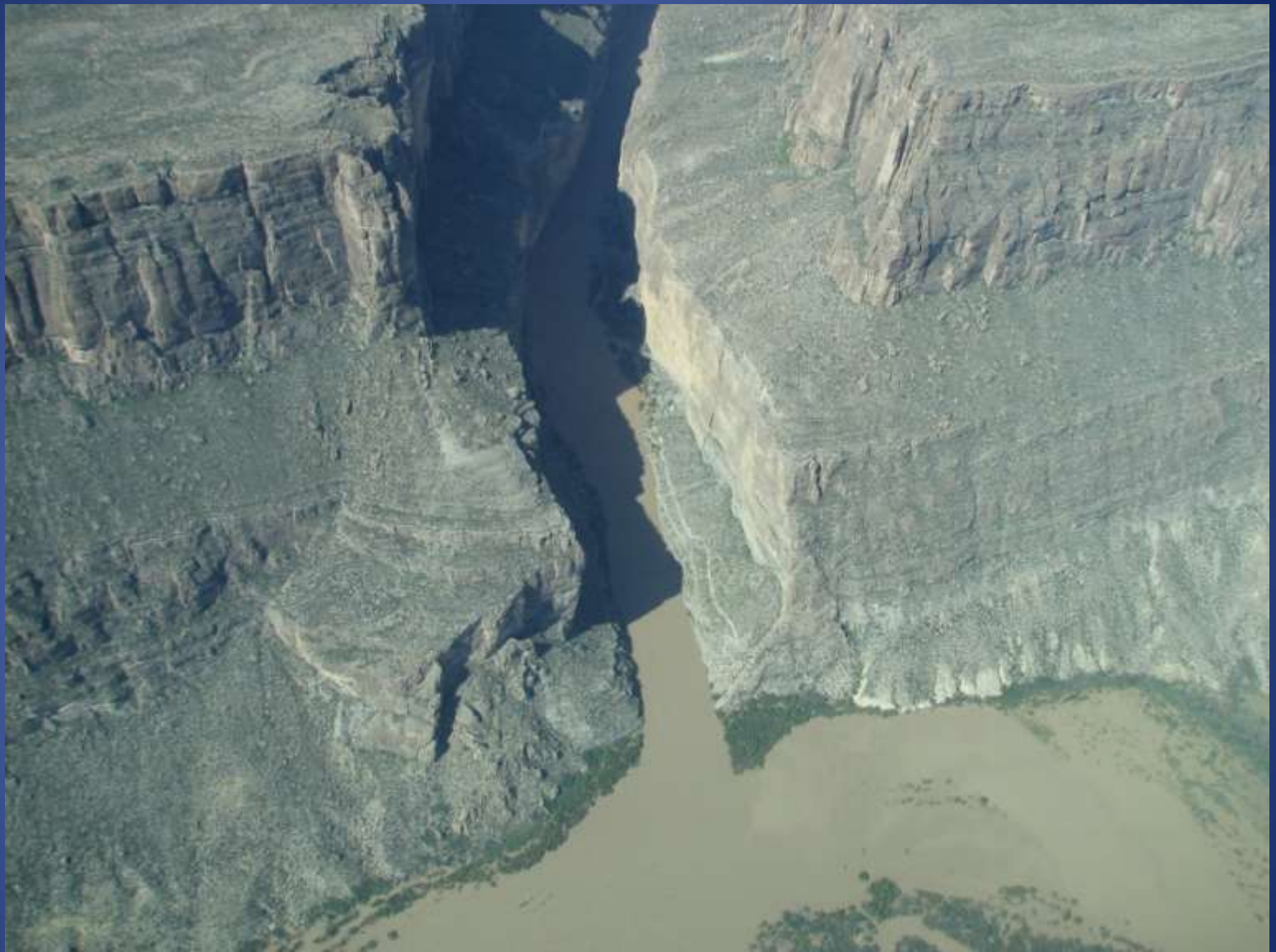


Rio Grande – Santa Elena Canyon (looking upstream).
Arrow at N29.158, W103.634
RG_09_20_08 195



Rio Grande – Exiting Santa Elena Canyon (looking upstream)

RG_09_20_08 196



Rio Grande Exiting Santa Elena Canyon (looking upstream).
RG_09_20_08 198



Rio Grande – Looking downstream from Santa Elena Canyon.
RG_09_20_08 199



Terlingua Creek looking upstream from near the confluence with Rio Grande.
RG_09_20_08 201



Rio Grande and Terlingua Creek Confluence at Santa Elena Canyon Exit.
RG_09_20_08 203



Rio Grande (looking upstream) and Terlingua Creek Confluence
at Exit of Santa Elena Canyon.

RG_09_20_08 208



Rio Grande just downstream of Santa Elena Canyon (MX in background).
RG_09_20_08 212



Rio Grande (looking upstream) between Santa Elena Canyon and Castolon.
RG_09_20_08 217



Rio Grande (looking upstream) between Santa Elena Canyon and Castolon.
RG_09_20_08 219



Rio Grande at Santa Elena MX.
RG_09_20_08 223



Rio Grande at Santa Elena MX.
RG_09_20_08 224



Santa Elena MX located on the Rio Grande.
RG_09_20_08 227



Rio Grande looking upstream at Santa Elena MX.
RG_09_20_08 229



Rio Grande Just Downstream of Santa Elena MX.
Arrow at N29.103, W103.496
RG_09_20_08 230



Rio Grande Looking Downstream from Santa Elena MX.
RG_09_20_08 231



Rio Grande Downstream of Santa Elena MX.
Arrow at N29.069, W103.474
RG_09_20_08 233



Rio Grande Downstream of Santa Elena MX.
Arrow at N29.069, W103.474
RG_09_20_08 235



Rio Grande Downstream of Santa Elena MX (MX in background).

Arrow at N29.069, W103.474

RG_09_20_08 237



Rio Grande between Santa Elena MX and Johnson Ranch Streamgauge.
Arrow at N29.071, W103.449
RG_09_20_08 236



Rio Grande Looking Downstream Toward Johnson Ranch Streamgauge.
Arrow at N29.071, W103.449
RG_09_20_08 234



Rio Grande Just Upstream of Johnson Ranch Streamgauge (MX in Background).
RG_09_20_08 239



Rio Grande Looking Downstream.
Arrow Pointing to Location of Johnson Ranch Streamgauge.
RG_09_20_08 240



Rio Grande at Johnson Ranch Streamgauge Location (Arrow).
RG_09_20_08 243



Rio Grande at Johnson Ranch Streamgauge Location (Arrow).
RG_09_20_08 245



Rio Grande at Johnson Ranch Streamgauge Location (Arrow).
RG_09_20_08 247



Rio Grande at Johnson Ranch Streamgauge Location (Arrow).
RG_09_20_08 248



Rio Grande Near Johnson Ranch Streamgauge (Arrow).
RG_09_20_08 249



Rio Grande Looking Upstream From Johnson Ranch Streamgauge Location (Arrow).

RG_09_20_08 250



Rio Grande Just Downstream From Johnson Ranch Streamgauge
MX in Background.
RG_09_20_08 252



Rio Grande Looking Downstream (MX in Right of Photo)
Arrow at N29.027, W103.335
RG_09_20_08 254



Loop Camp Area

Rio Grande at the Loop Camp Area (Arrow).
RG_09_20_08 256



Jewels Camp Area

Rio Grande at Jewels Camp Area Just Upstream of Woodsons.
MX in Upper Right of photo.

RG_09_20_08 261



Jewels Camp
Area

Rio Grande at Jewels Camp Area – MX in Background.
Arrow at N29.003, W103.308
RG_09_20_08 262



Rio Grande at Jewels Camp Area (MX in Background).
Arrow at N29.003, W103.308
RG_09_20_08 263



Woodsons

Rio Grande at Woodsons (MX in Background).
RG_09_20_08 264



Rio Grande at Woodson Area, Looking Back into MX and MX Tributaries.
RG_09_20_08 270



Rio Grande Between Woodsons and Talley.
MX in Background.
RG_09_20_08 268



Rio Grande Between Woodsons and Talley.
MX in Background.
RG_09_20_08 269



Rio Grande Between Woodsons and Talley.
MX in Background.
RG_09_20_08 271



Rio Grande Between Woodsons and Talley.
MX in Background.
RG_09_20_08 272



Rio Grande Between Woodsons and Talley.
MX in Background.
RG_09_20_08 274



Rio Grande Between Woodsons and Talley (MX in Background).
Arrow at N29.987, W103.205
RG_09_20_08 275



Rio Grande Looking Downstream at Entrance to Mariscal Canyon.
MX and MX Tributary in Right of Photo.

RG_09_20_08 277



Rio Grande Looking Downstream at Entrance to Mariscal Canyon.
RG_09_20_08 280



Rio Grande and MX Tributary Confluence Just Upstream of
Entrance To Mariscal Canyon
RG_09_20_08 281



Rio Grande at Entrance to Mariscal Canyon.
MX in Background.
RG_09_20_08 285



Rio Grande Through Mariscal Canyon.
MX in Background.
RG_09_20_08 288



Rio Grande Through Mariscal Canyon.
MX in Background.
RG_09_20_08 289



Rio Grande Through Mariscal Canyon – Looking Upstream Along MX
Tributary. Confluence Located at N28.982, W103.129

RG_09_20_08 290



MX Tributary to Rio Grande. Looking Just Upstream of
Confluence Located at N28.982, W103.129

RG_09_20_08 291



Rio Grande Through Mariscal Canyon – Looking Upstream.

Arrow at N28.987, W103.114

RG_09_20_08 298



Rio Grande Through Mariscal Canyon.
Looking Downstream Near Canyon Exit
RG_09_20_08 296



Rio Grande at Exit of Mariscal Canyon

RG_09_20_08 300



Rio Grande at Exit of Mariscal Canyon
RG_09_20_08 302



Rio Grande Just Downstream of Mariscal Canyon Exit.

MX in Background

RG_09_20_08 306



Rio Grande Looking Downstream at
Fresno Creek Confluence (Arrow).

RG_09_20_08 308



Rio Grande at Confluence With Fresno Creek (Arrow).
MX on Right in Photo
RG_09_20_08 312



Rio Grande Looking Upstream at Confluence With Fresno
Creek – MX in Upper Left of Photo.

RG_09_20_08 317



Rio Grande Looking Downstream From Fresno Creek.
MX on Right in Photo.

RG_09_20_08 310



Rio Grande Looking Downstream From Near Confluence With Fresno Creek – MX on Right in Photo.

RG_09_20_08 313



Rio Grande Just Upstream of Rooney's Place and Sierra San Vicente Peak – MX in background. Arrow at N29.076, W103.077
RG_09_20_08 320



Rio Grande Looking Downstream From Rooneys Place (Arrow).
MX in Right of Photo.
RG_09_20_08 321



Rio Grande Looking Downstream From Rooneys Place –
Toward San Vicente. MX in Right of Photo.

RG_09_20_08 323



Rio Grande Looking Upstream Toward Rooneys Place (Arrow).
RG_09_20_08 329



Rio Grande Just Upstream of San Vicente.
MX in Background.
RG_09_20_08 324



Rio Grande Near San Vicente (Arrow).
MX in Background.
RG_09_20_08 326



Rio Grande At San Vicente (Arrow).
MX in Background.
RG_09_20_08 330



Rio Grande Between At San Vicente (Arrow).
MX in Background.
RG_09_20_08 331



Rio Grande Just Downstream of San Vicente.
MX in Background.
RG_09_20_08 333



Rio Grande Between San Vicente and La Clocha Camp Ground.
MX in Background.
RG_09_20_08 336



Rio Grande Between San Vicente and La Clocha Campground.
MX in Background.
RG_09_20_08 337



Rio Grande Looking Upstream From Rio Grande Village Area.
Arrow Located Near USGS Streamgauge Station.
RG_09_20_08 352



Rio Grande Looking Upstream From Rio Grande Village Area.
Arrow Located Near USGS Streamgauge Station.

RG_09_20_08 351

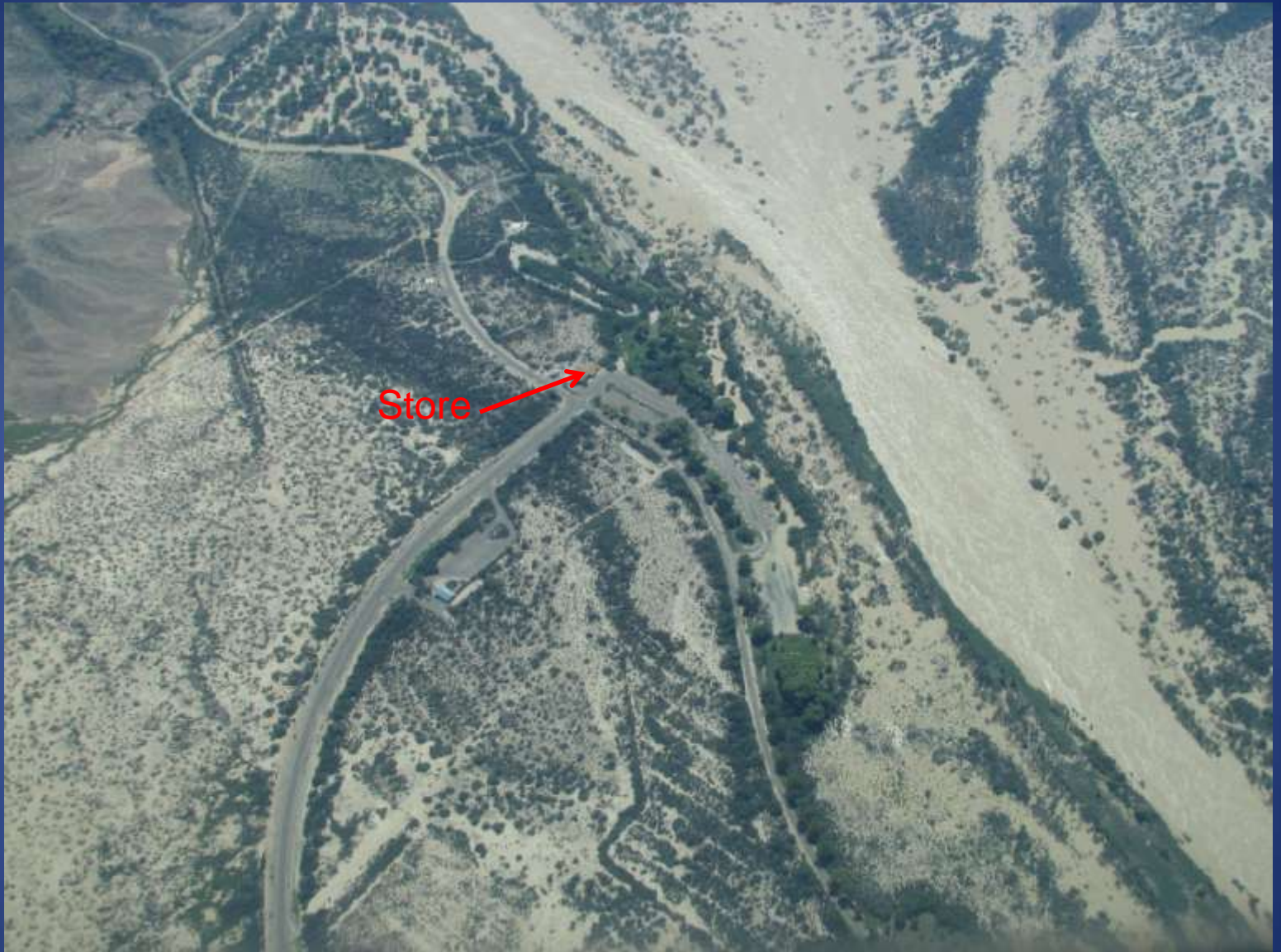


Rio Grande at Rio Grande Village.
Arrow Located Near USGS Streamgauge Station.
RG_09_20_08 350



Rio Grande at Rio Grande Village.

RG_09_20_08 344



Rio Grande at Rio Grande Village.
RG_09_20_08 343



Rio Grande at Rio Grande Village.
MX in Background.
RG_09_20_08 345



Rio Grande Looking Downstream Toward Boquillas Canyon.
MX in Right of Photo.
RG_09_20_08 340



Rio Grande Looking Downstream Toward Boquillas Canyon.
MX in Right of Photo.
RG_09_20_08 338



Rio Grande at Boquillas MX (Arrow)
Just Before Entering Boquillas Canyon.
RG_09_20_08 346



Rio Grande Entering Boquillas Canyon.

RG_09_20_08 347