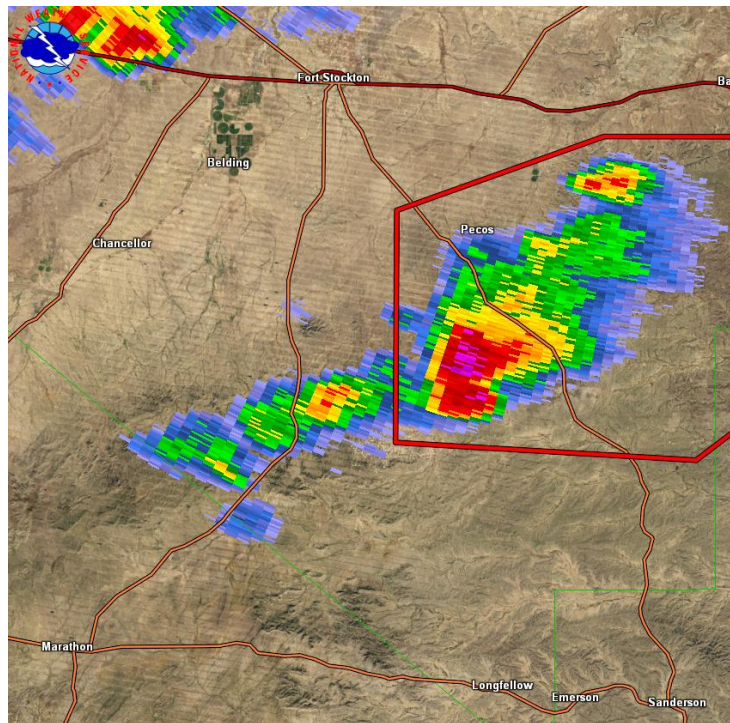


## April 19, 2016 Pecos County Tornado

On April 19, 2016, experienced storm spotters and Emergency Management reported a tornado in rural Pecos County, about 25 miles south southeast of Fort Stockton, Texas. The tornado was located between US 385 and US 285. Reports indicated that the tornado touched down at 4:53 pm CDT and remained on the ground for ten minutes before dissipating at 5:03 pm CDT. Radar imagery from KMAF shows the supercell's location and progression (Figures 1-4). Pictures of the supercell clearly shows its evolution (Figures 5-8). Since the tornado stayed in open fields and there was no evidence of damage, National Weather Service meteorologists will rate the tornado an EF-0.

The National Weather Service Office in Midland, Texas would like to give a special thank you to the Tempest Tours chase group; and in particular William Reid, Chris Gullikson, and Marcia Perez for providing key information about the tornado.



**Figure 1: Radar imagery at 4:54 pm CDT.**

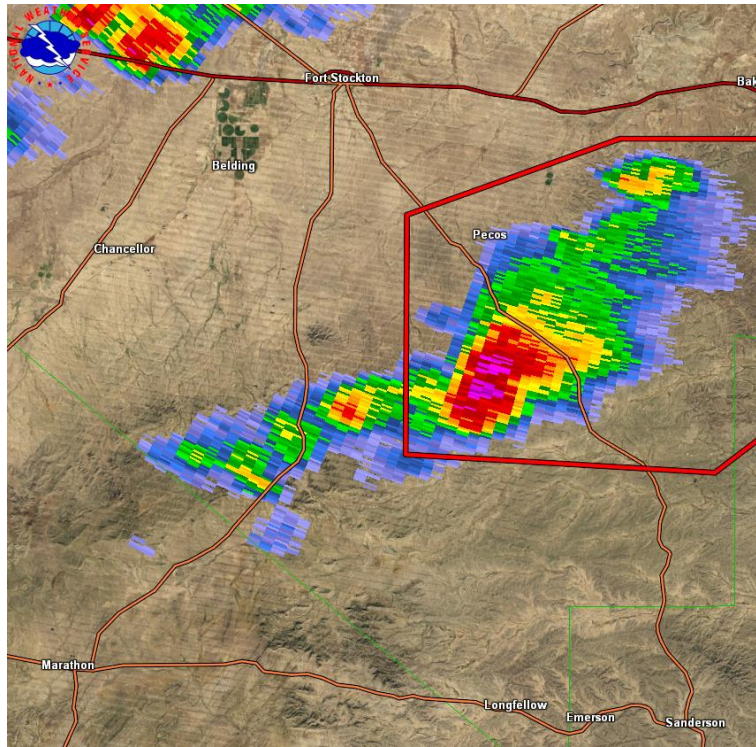


Figure 2: Radar imagery at 4:57 pm CDT.

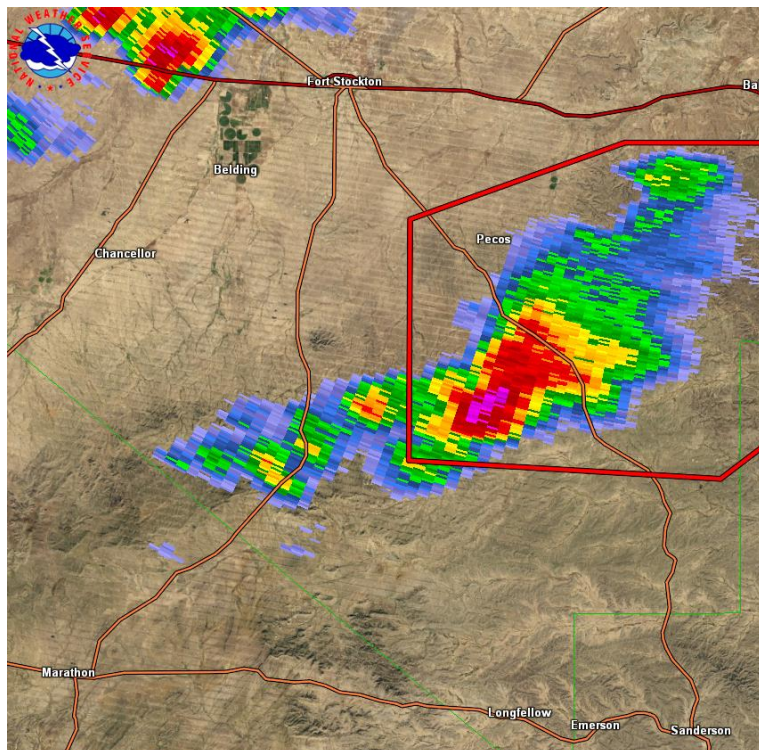


Figure 3: Radar imagery at 5:00 pm CDT.

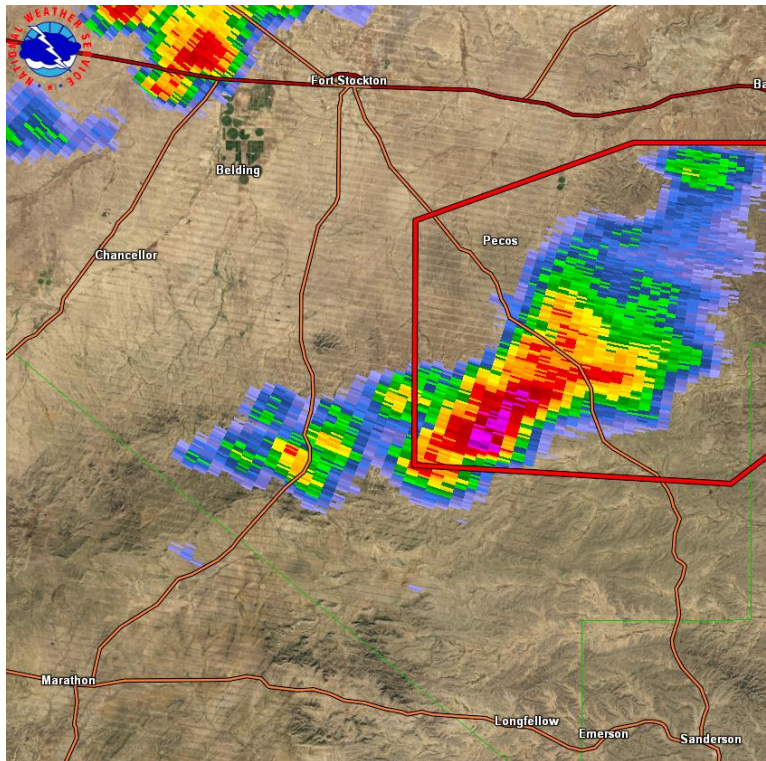


Figure 4: Radar imagery at 5:04 pm CDT.



Figure 5: Supercell that spawned the tornado (Courtesy of William Reid).



**Figure 6: Looking west from US 285 (Courtesy of William Reid).**



**Figure 7: Looking west from US 285 (Courtesy of William Reid).**



**Figure 8: Looking west from US 285 (Courtesy of William Reid).**