

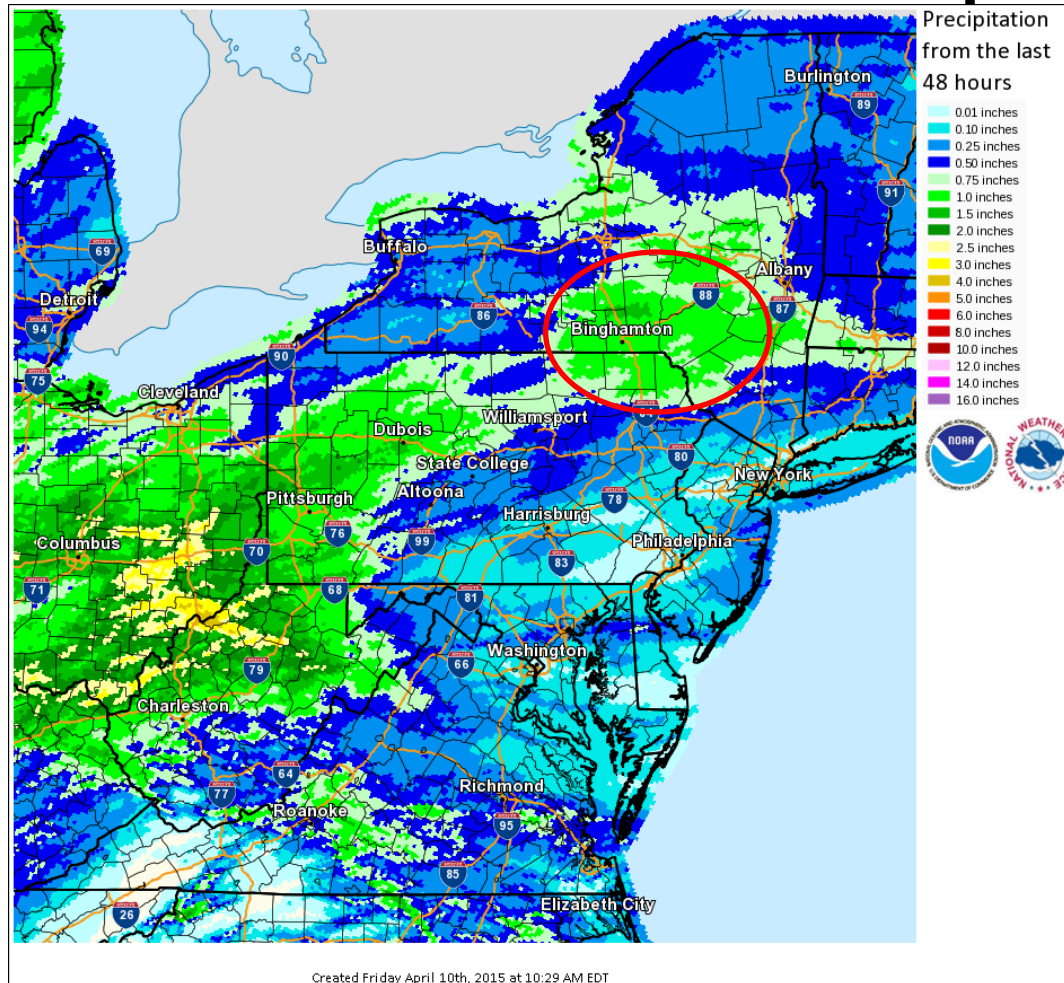
NOAA, National Weather Service
Middle Atlantic
River Forecast Center
Briefing

11:00 am April 10, 2015

Key Messages

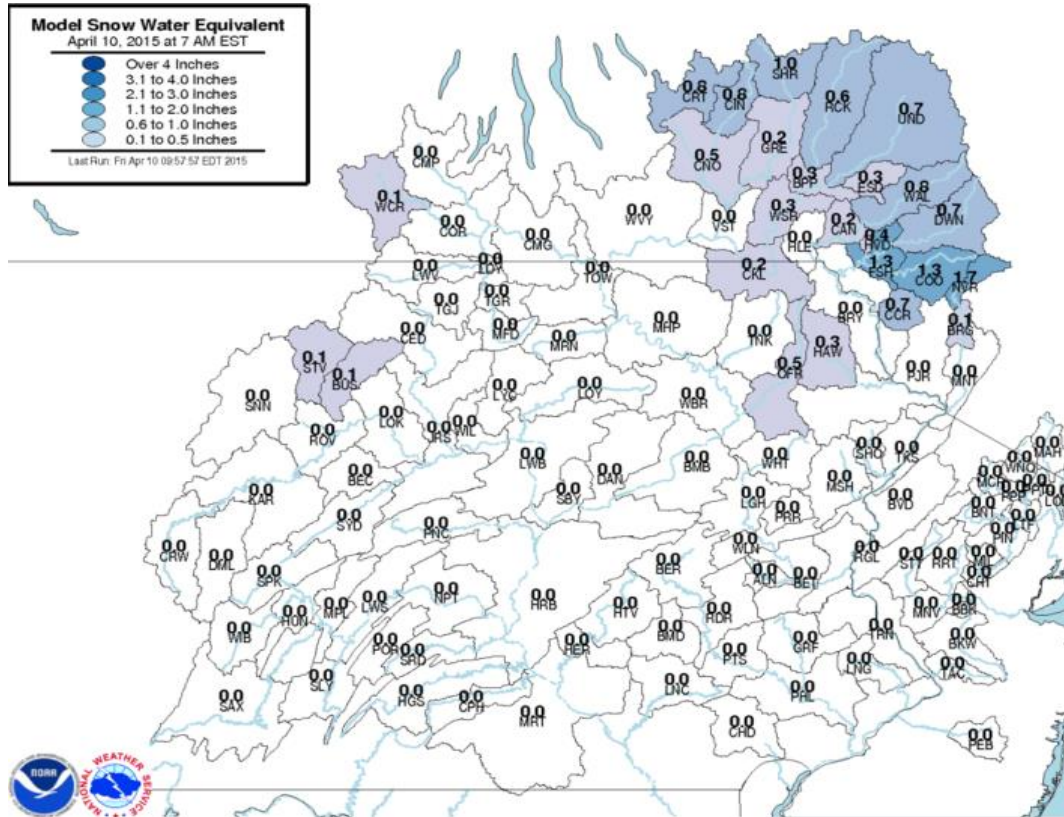
- Minor flooding today with **Moderate flooding possible tonight at Vestal, NY. Impact includes cellar flooding on Argonne Drive in Endwell, NY.**
- Minor Flooding expected or already in progress at Sherburne, Cortland, Chenango Forks, Bainbridge, Conklin, Waverly, and Walton, NY.
- Rainfall of 0.5 to 1.0 inches across south-central NY and the Catskills yesterday and today plus snow melt of a quarter to a half inch is causing these significant rises.
- **Confidence in forecast is high** since most of the rain has fallen and snowmelt will be driven by temperatures in the 50s today.

Observed 48 Hour Precipitation



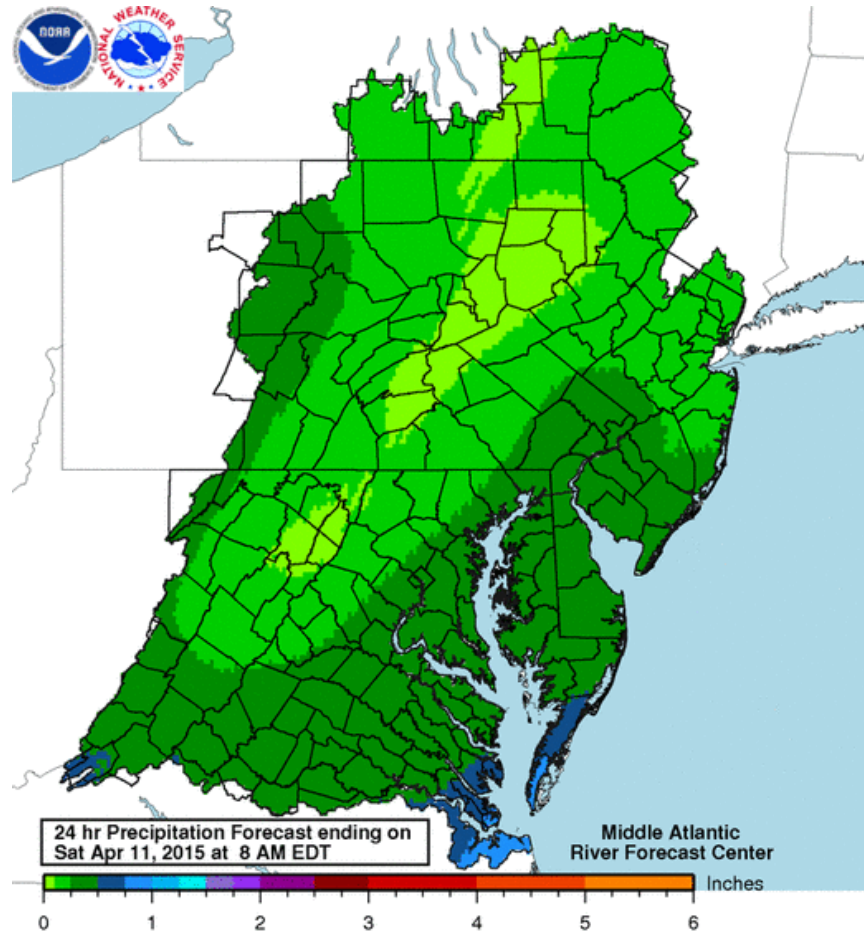
48 hour rainfall ending 10AM Friday: One to one and a half inches fell across the North Branch Susquehanna basin and northern half of the Upper Delaware basin.

NY/PA Snow Water Equivalents



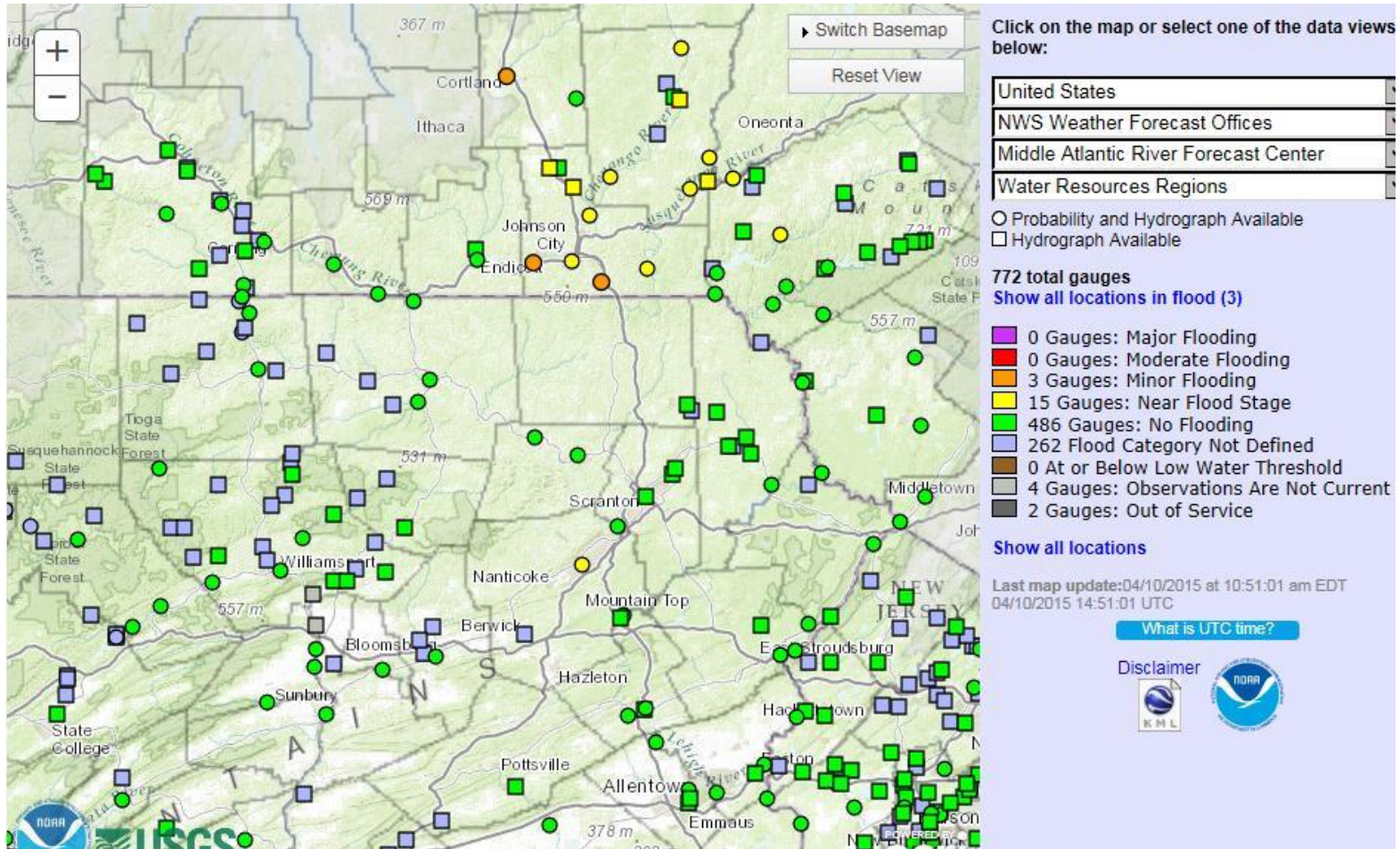
Friday morning's observed Snow Water Equivalent ranges from 0 to 1.7 inches. Significant melting of 0.25 to 0.5 inches expected today.

Forecast Rainfall



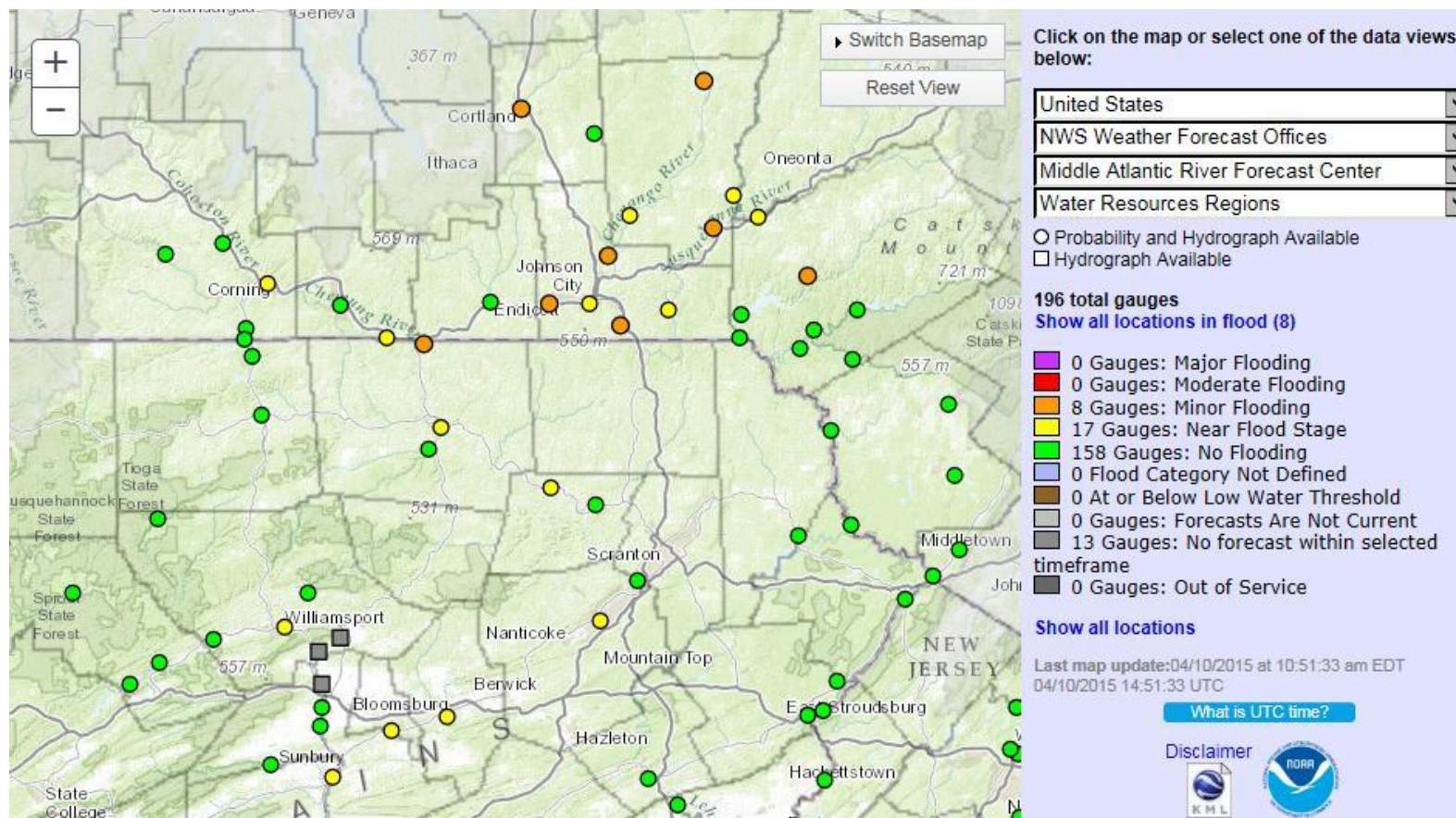
Rainfall Forecast for Friday and Friday night: Less than a quarter inch across the upper Susquehanna and upper Delaware basins.

Observed River Levels



Observed river levels as of 10AM April 10: Cortland, Conklin, and Vestal are above minor flood stage now. Many other locations are near flood stage (in yellow).

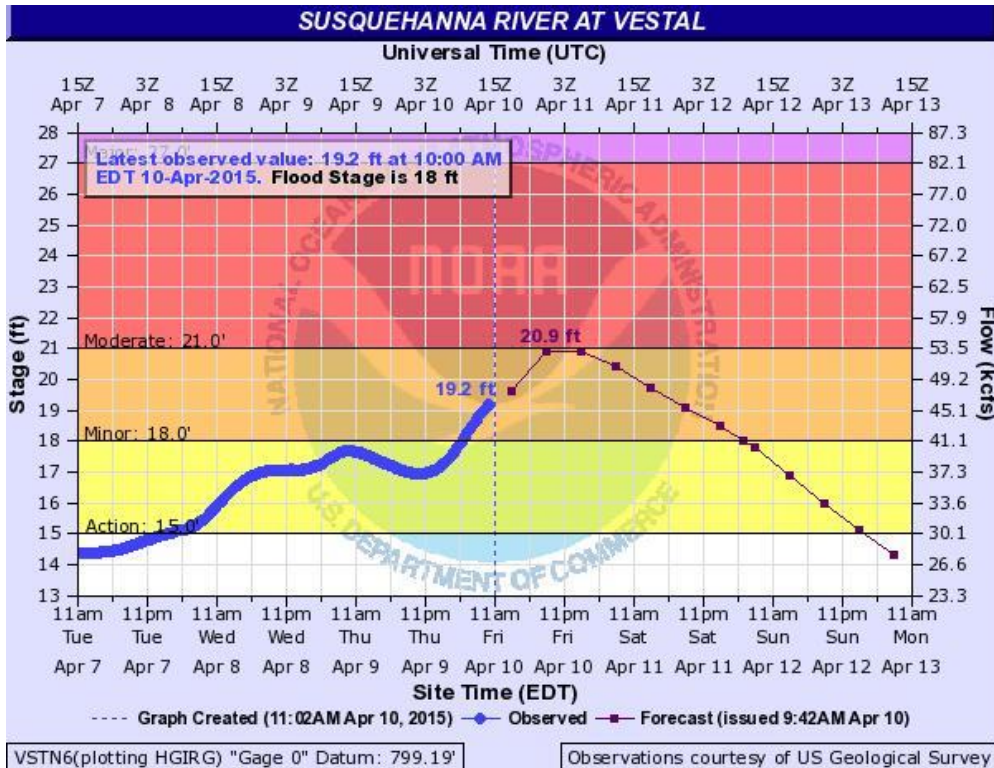
River Forecasts



Minor Flooding beginning this afternoon or tonight at Walton, Sherburne, Bainbridge. Chenango Forks, and Waverly. Minor flooding will continue at Cortland, Conklin, and Vestal, NY. Elsewhere, significant rises to near flood stage expected. **These Forecasts will be updated at 4PM and 10PM today. Please check www.weather.gov/marfc for the latest forecast hydrographs.**

Vestal, NY

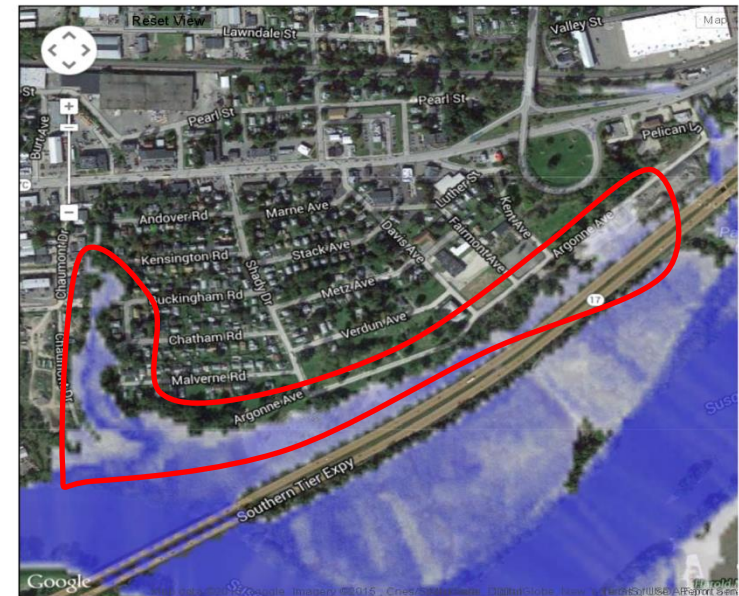
[http://water.weather.gov/ahps2/...](http://water.weather.gov/ahps2/)



AHPS Inundation



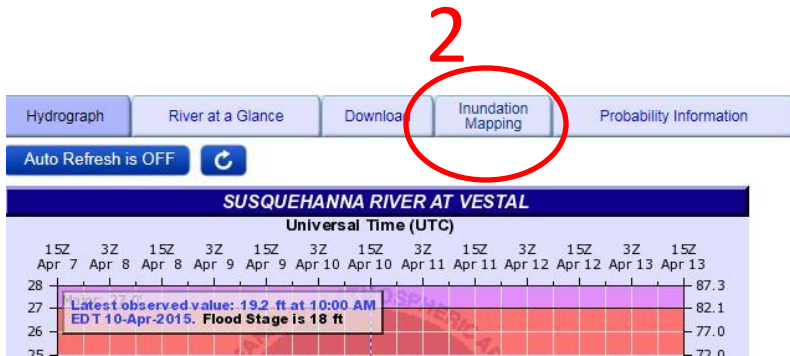
Susquehanna River at Vestal, NY (VSTN6)



Current Stage: 19.2 ft at 04/10/2015 14:00:00 UTC
Selected Inundation: NAVD88: 819.7 ft stage: 21.0 ft

Vestal will rise to between 20.5 and 21.5 feet this evening. The dark red line on the hydrograph at left shows the forecast (see times at the bottom of the graph). On the right is an inundation map where blue shows the expected areas to flood. Note basement flooding is likely on portions of Argonne Ave in Endwell, NY.

Inundation Mapping



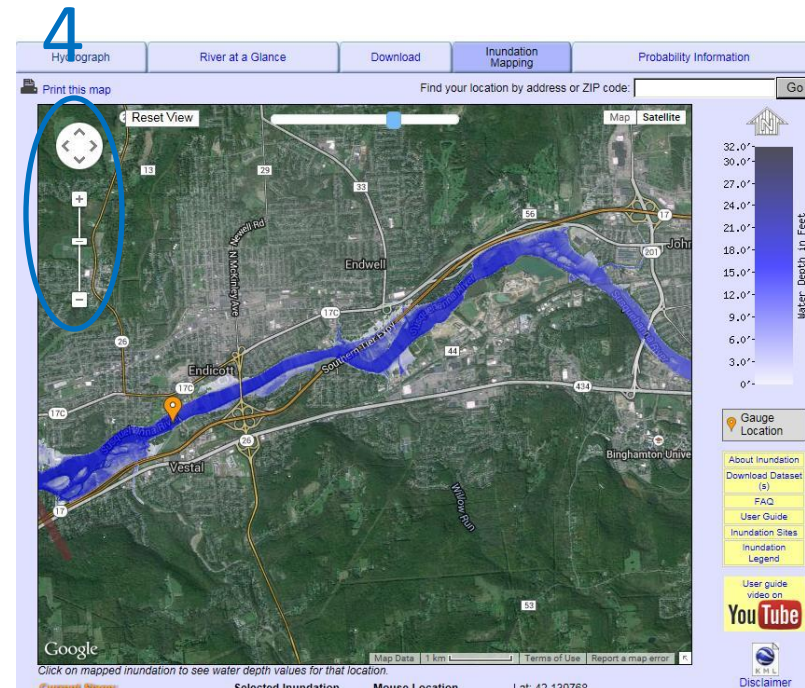
Inundation Levels

NAVD88	Stage
835.8*	37.1*
Record Crest: 35.26 ft	
832.8	34.1
831.8	33.1
830.8	32.1
829.8	31.1
828.8	30.1
827.8	29.1
826.8	28.1
825.8	27.1
Major Flooding Begins	
824.8	26.1
823.8	25.1
822.8	24.1
821.7	23.0
820.9	22.1
819.7	21.0
Moderate Flooding Begins	
818.7	20.0
817.7	19.0
816.8	18.1
Minor Flooding Begins	
815.8	17.1
814.7	16.0
813.7	15.0

* = Extended rating

To see the inundation map for any area near Vestal:

1. Go to www.weather.gov/marfc, click on the dot on the map for Vestal
2. Click the tab labeled "Inundation Mapping",
3. Select 21 feet in the left hand column (or latest forecast crest)
4. Zoom in to the area that interests you.



Need more info?

- Contact your local NWS Weather Forecast Office
 - Binghamton, NY <http://weather.gov/bgm>
 - Blacksburg, VA <http://weather.gov/rnk>
 - Mt Holly, NJ <http://weather.gov/phi>
 - State College, PA <http://weather.gov/ctp>
 - New York City, NY <http://weather.gov/okx>
 - Sterling, VA <http://weather.gov/lwx>
 - Wakefield, VA <http://weather.gov/akq>
- Email: peter.ahnert@noaa.gov

Find MARFC Online at:

- Homepage: <http://weather.gov/marfc>
- Facebook: <https://www.facebook.com/US.NationalWeatherService.MARFC.gov>
- Twitter @NWSMARFC

Next MARFC Briefing

- **This will be the last briefing on this flood event.**