

NOAA, National Weather Service
Middle Atlantic
River Forecast Center
Briefing

Noon - September 29, 2015

Key Messages

- **Risk of minor to moderate river flooding** this weekend due to the impact of two storms on our basin. We are expecting the first storm to prime the basin and the second storm could potentially produce flooding.
- **Moderate confidence** heavy rain will occur today and tomorrow. Totals are uncertain, but 4"+ possible. Heaviest rain is expected over PA, southern NY, and northern NJ.
- **Forecast updates** every 6 hours as needed. Otherwise new forecasts will be issued by 11 am tomorrow.

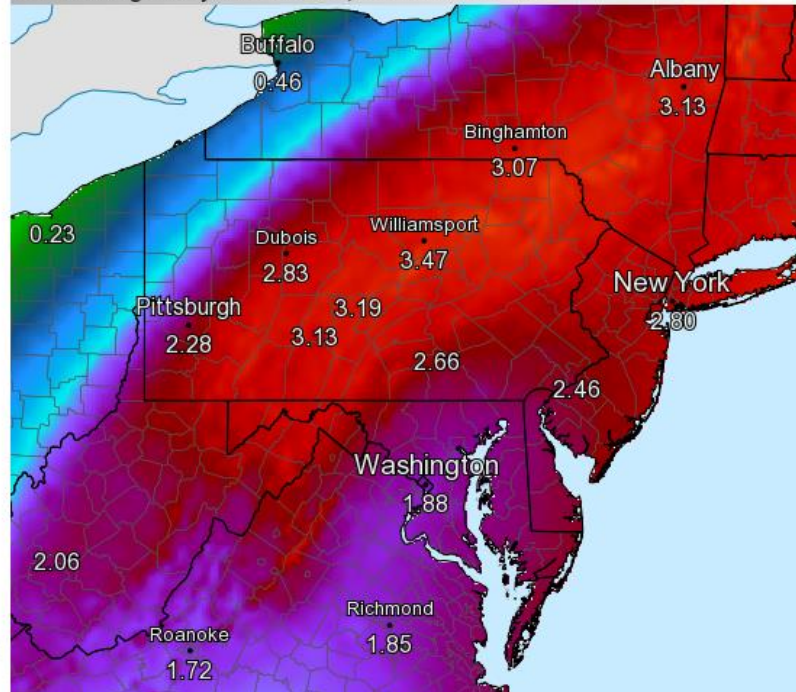
Tuesday Afternoon Through Friday Afternoon, Days 1 - 3

Friday Afternoon Through Monday Afternoon Days 4 - 6

Forecast Precipitation

National Weather Service

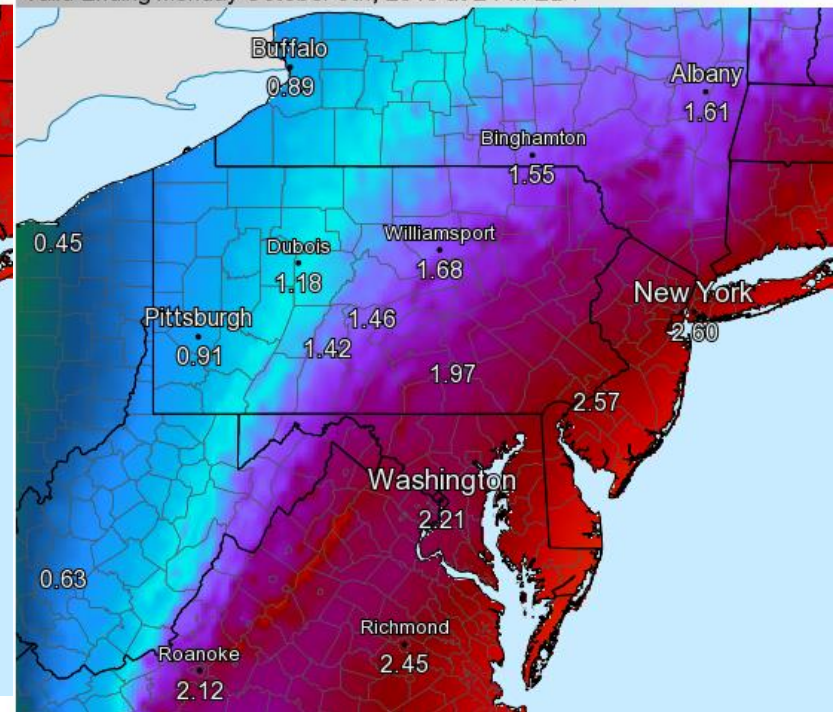
Valid Ending Friday October 2nd, 2015 at 2 PM EDT



Forecast Precipitation

National Weather Service

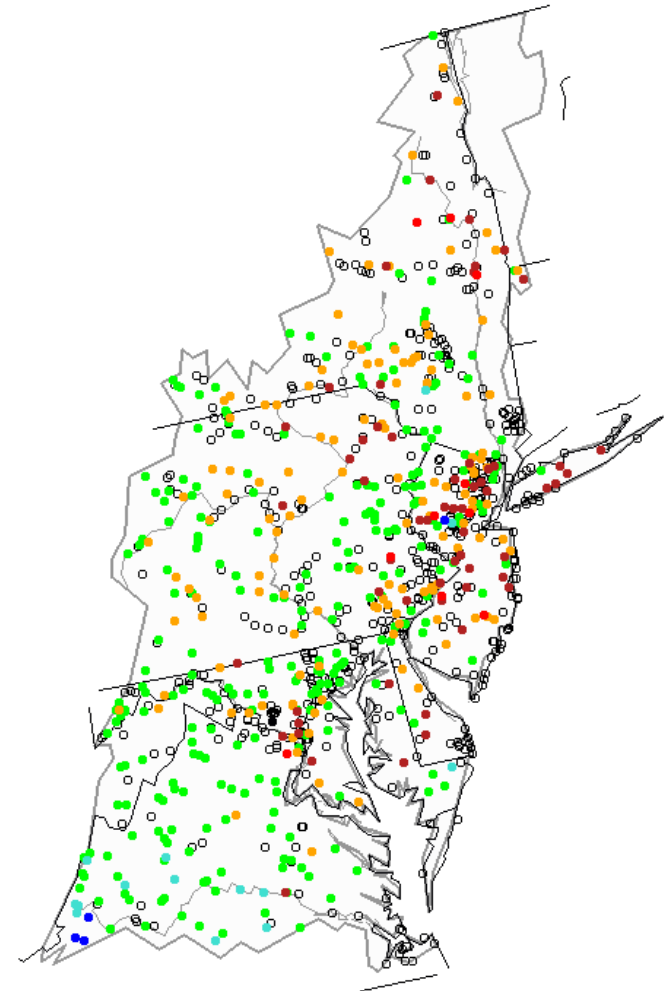
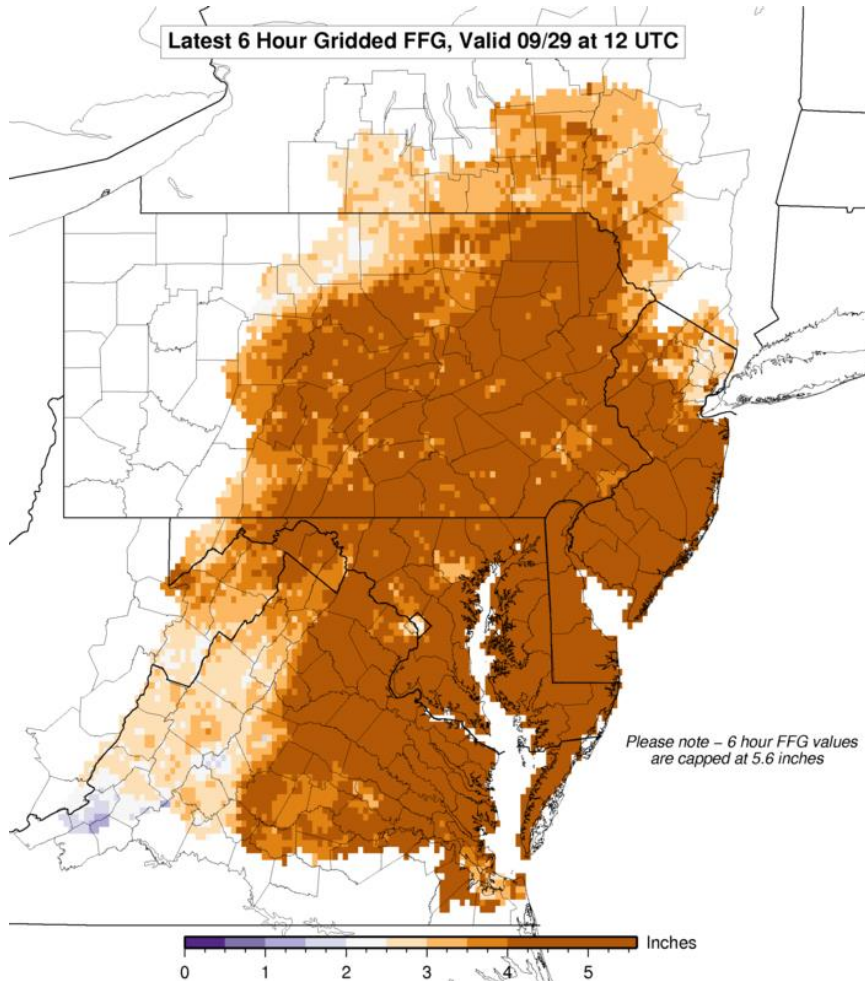
Valid Ending Monday October 5th, 2015 at 2 PM EDT



- Confidence is high that heavy rain will fall in the region, but the rainfall totals are uncertain.
- Meteorological models are showing a possibility of 4+ inches in isolated areas Tue and Wed.
- Uncertainty is higher for this weekend with a second system along the east coast.

Soils are dry and river levels are currently low in the region.

Tuesday, September 29, 2015 10:00ET



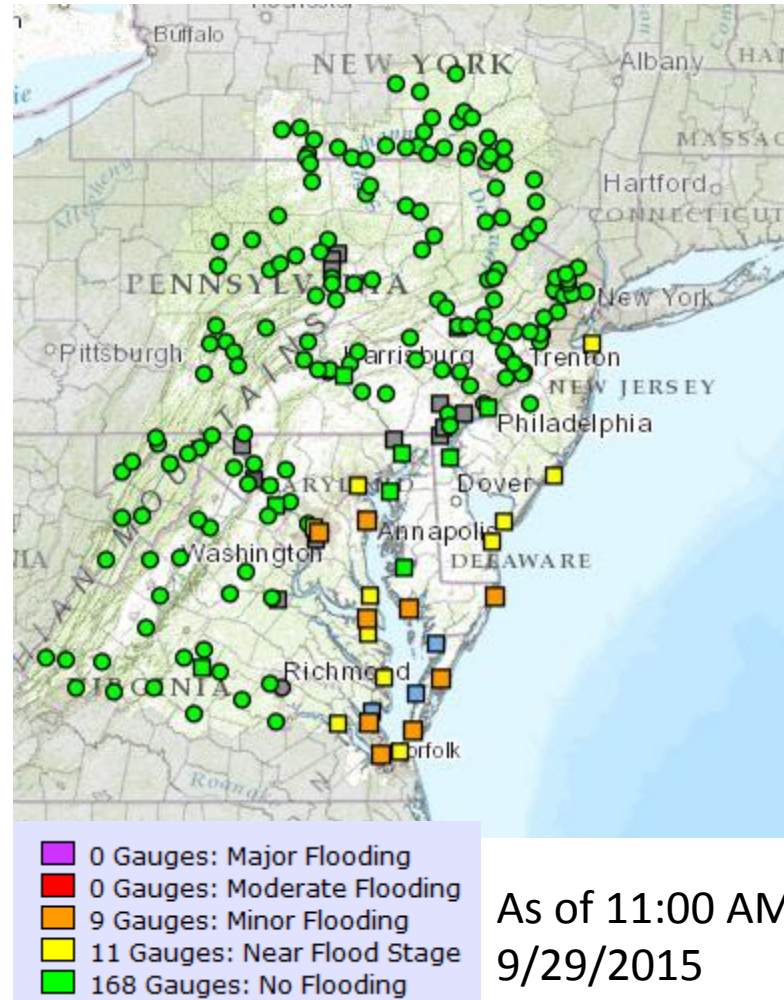
6 hr FFG: Amount of rain required in a 6 hour period to cause minor flooding.



Explanation - Percentile classes							
Low	<10	10-24	25-75	76-90	>90	High	Not-ranked
	Much below normal	Below normal	Normal	Above normal	Much above normal		

3 Day River Forecasts

- Due to dry conditions, no river flooding is forecast.
- Using best-estimate precipitation forecasts
- River forecasts are expected to change. The possibility exists for moderate flooding at some locations.
- Forecasts will be updated if conditions change.
- For the latest river forecasts for your location go to our web page at: www.weather.gov/marfc



River Flood Outlook

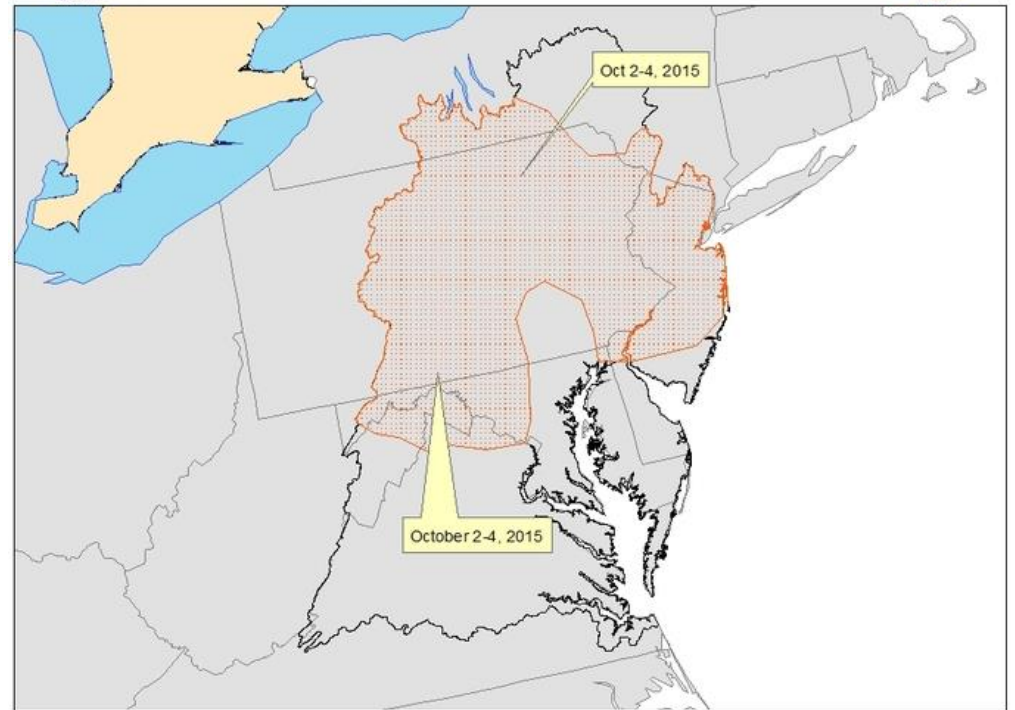
- Moderate River Flooding is possible across portions of Pennsylvania, Maryland, New Jersey, West Virginia, and southern New York.
- Timing for this flooding is between October 2-4, 2015.



Significant River Flood Outlook


Valid: 9/29/2015 - 10/4/2015

Middle Atlantic River Forecast Center 9/29/2015 10:57:24 AM



 SIGNIFICANT RIVER FLOODING POSSIBLE.

 SIGNIFICANT RIVER FLOODING LIKELY.

 SIGNIFICANT RIVER FLOODING OCCURRING OR IS IMMINENT.

Significant River Flooding Impacts include:
Roads adversely affected. Residential, commercial, industrial, and/or agricultural areas affected. May require evacuation of people.

NOTE: Flash Flooding or Minor River Flooding will NOT be included in this outlook.

Need more info?

- Contact your local NWS Weather Forecast Office
 - Binghamton, NY <http://weather.gov/bgm>
 - Blacksburg, VA <http://weather.gov/rnk>
 - Mt Holly, NJ <http://weather.gov/phi>
 - State College, PA <http://weather.gov/ctp>
 - New York City, NY <http://weather.gov/okx>
 - Sterling, VA <http://weather.gov/lwx>
 - Wakefield, VA <http://weather.gov/akq>
- Email: peter.ahnert@noaa.gov

Find MARFC Online at:

- Homepage: <http://weather.gov/marfc>
- Facebook: <https://www.facebook.com/US.NationalWeatherService.MARFC.gov>
- Twitter @NWSMARFC

Next MARFC Briefing

- **The next MARFC briefing will be issued tomorrow around 11 am.**