



NOAA, National Weather Service Middle Atlantic River Forecast Center Briefing

Wednesday, September 28, 2016

Prepared by:

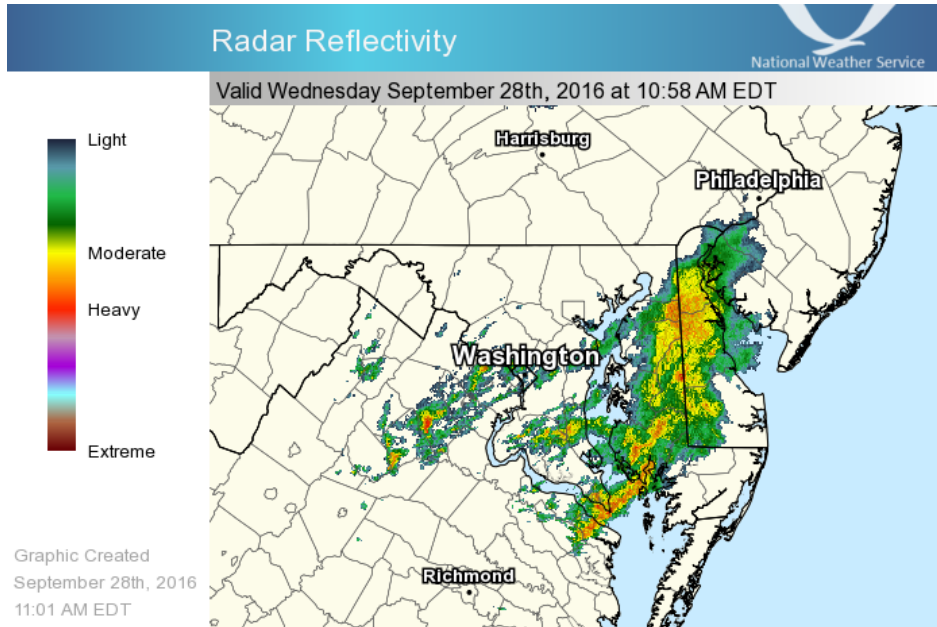
Robert Shedd
Robert.Shedd@noaa.gov

Key Points

HEAVY RAIN FOR THE MID-ATLANTIC THE NEXT SEVERAL DAYS

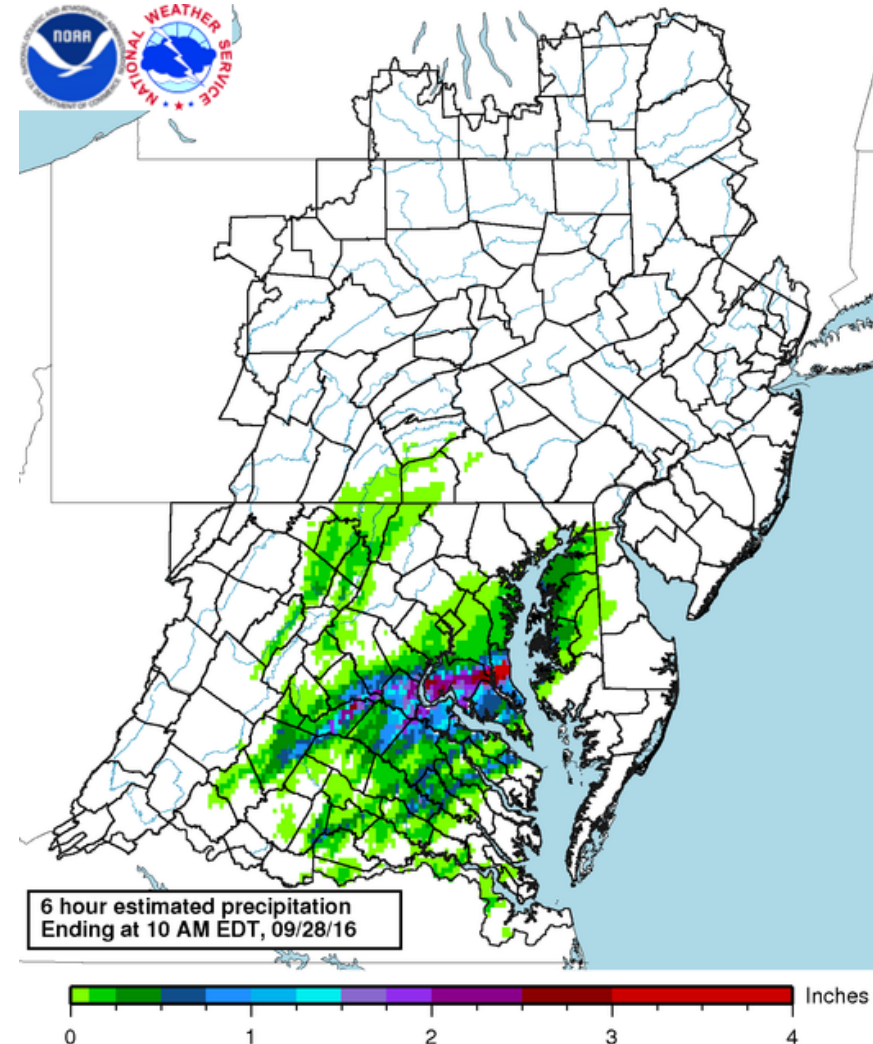
- **Risk:** Heavy rain (3-6 inches) will fall over the next several days and could result in mainly small stream and urban flooding concerns as well as some minor river flooding
- **Location:** Heaviest rain is likely from south-central Pennsylvania into northern Virginia
- **Timing:** Rain has started this morning but heaviest rains likely Wednesday evening thru Thursday with rain continuing into the weekend
- **Uncertainty:** The main uncertainty at this point is the amount of rain that is forecast. There is some discussion for the potential of amounts approaching 8 inches in some areas which would result in more significant flooding.
- **Note:** While this briefing mainly addresses river flooding, there is also a risk of localized small stream flooding thru this event. Poor drainage flooding is also likely.

Observed Precipitation

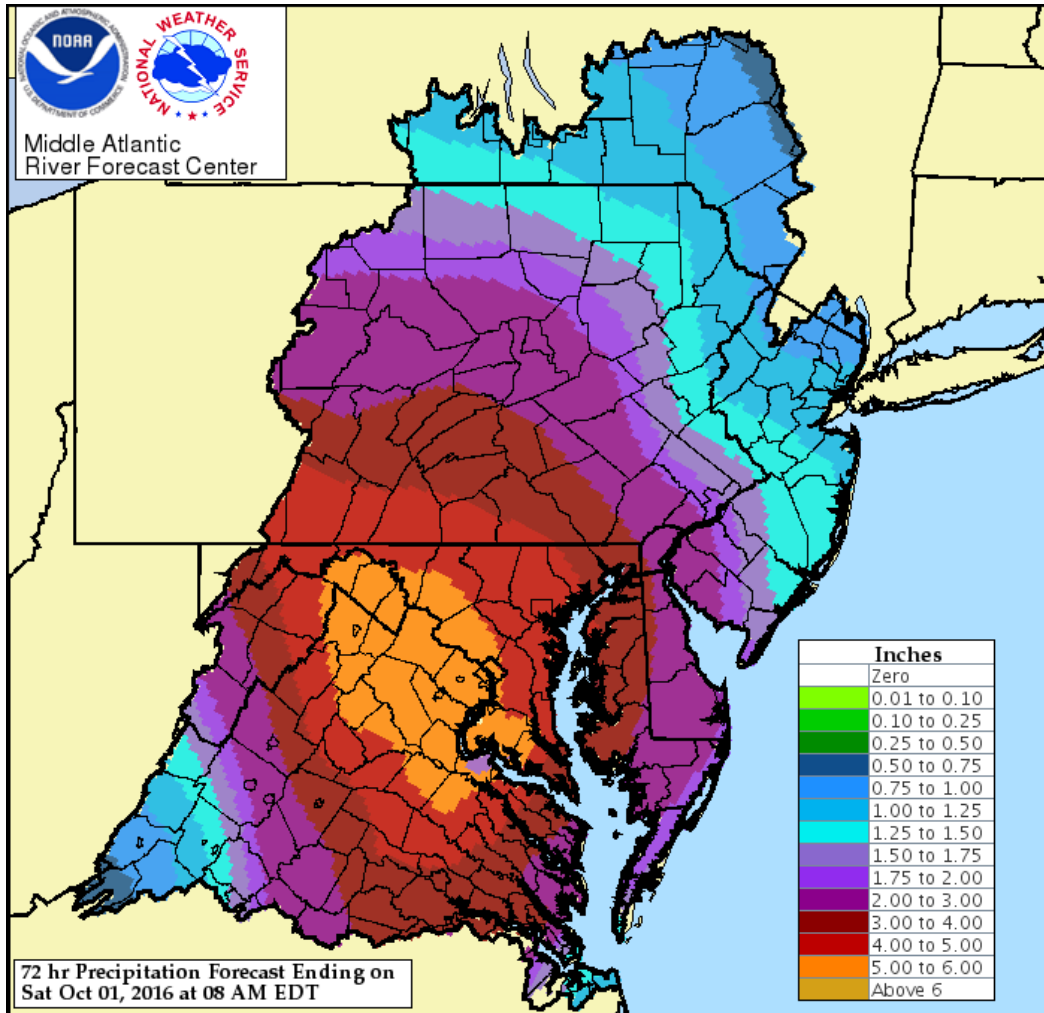


Rain is currently falling primarily across the Maryland Eastern Shore at this time

Localized amounts of 1-3 inches of rain have already been reported southeast of Washington DC



3 Day Precipitation Forecast



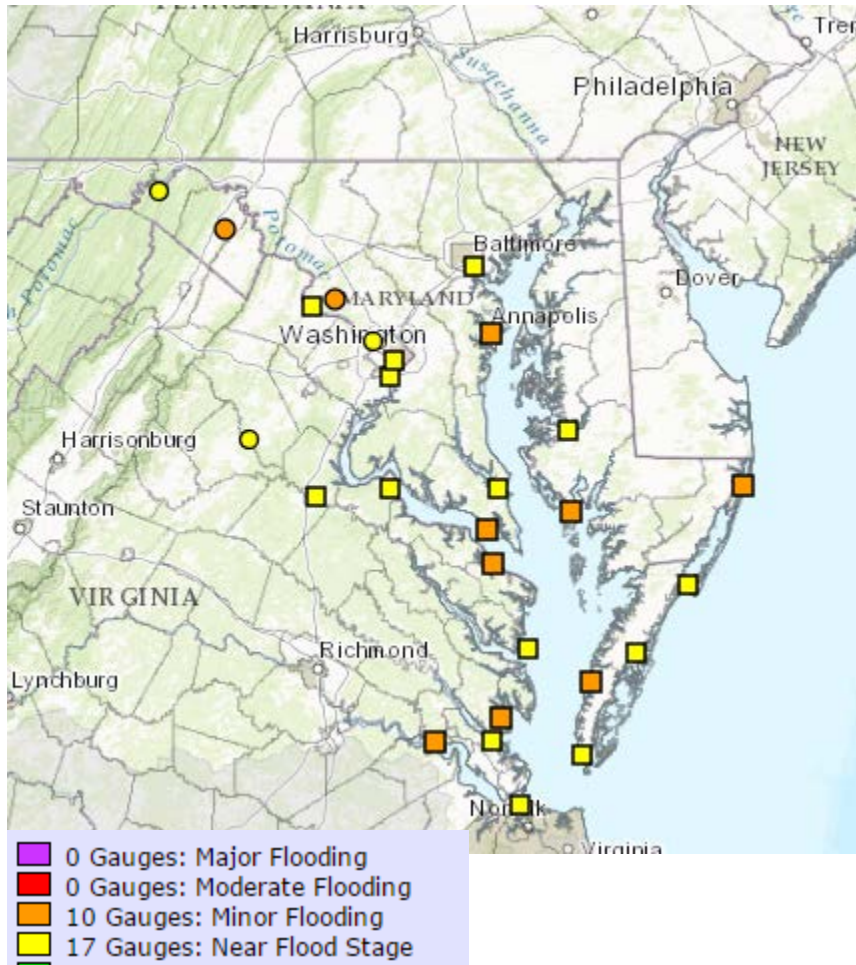
Rain will continue to develop over the next 24 hours

Amounts exceeding 4 inches are forecast over 3 days from south-central Pennsylvania across much of Maryland and northern Virginia

Heaviest periods of rain should be from this evening thru Thursday evening

Lighter amounts of rain will continue into the weekend

Official River Forecasts (as of noon on Sept 28)

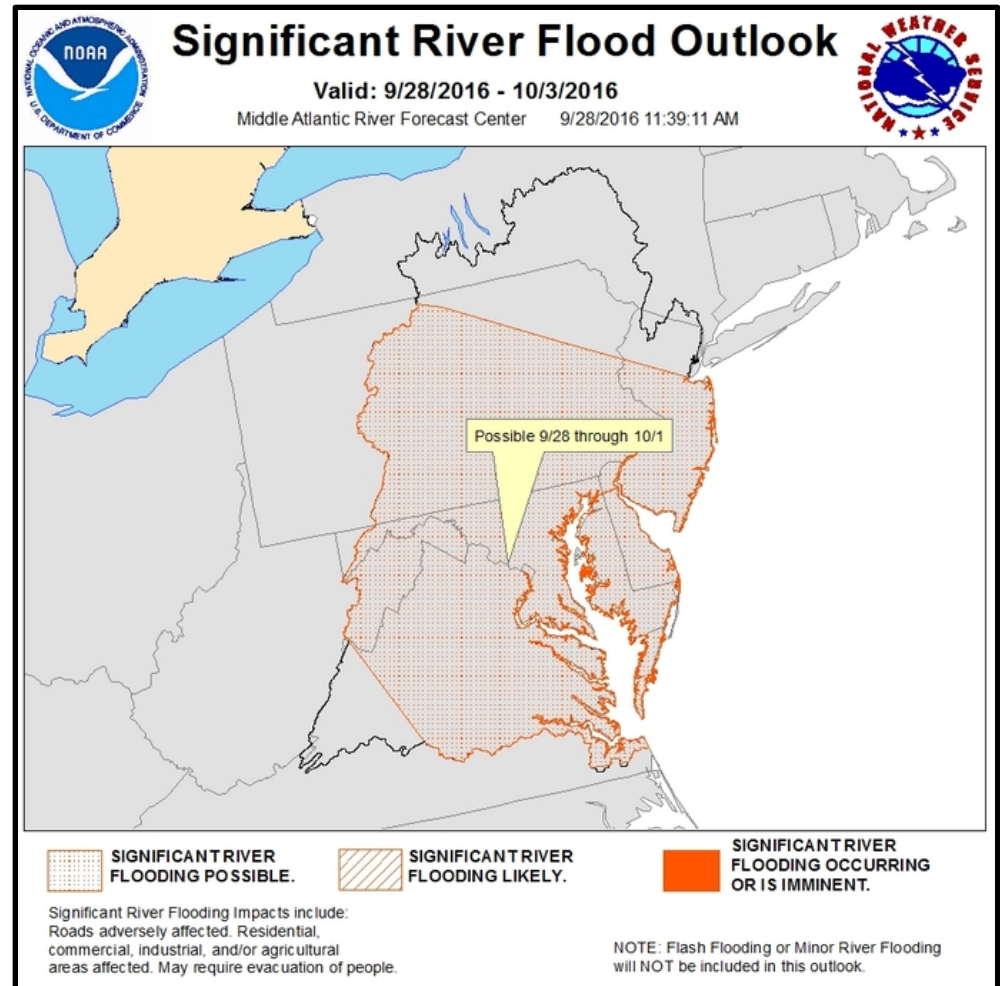


- Minor flooding is forecast at a couple of tributaries in the Potomac River basin. These locations include:
 - Opequon Creek at Martinsburg, WV
 - Seneca Creek at Dawsonville, MD
- Other locations in that region including the Potomac River at Shepherdstown are expected to approach flood levels
- Tidal flooding in Washington DC is also possible as well as coastal flooding around Chesapeake Bay and the Delmarva peninsula

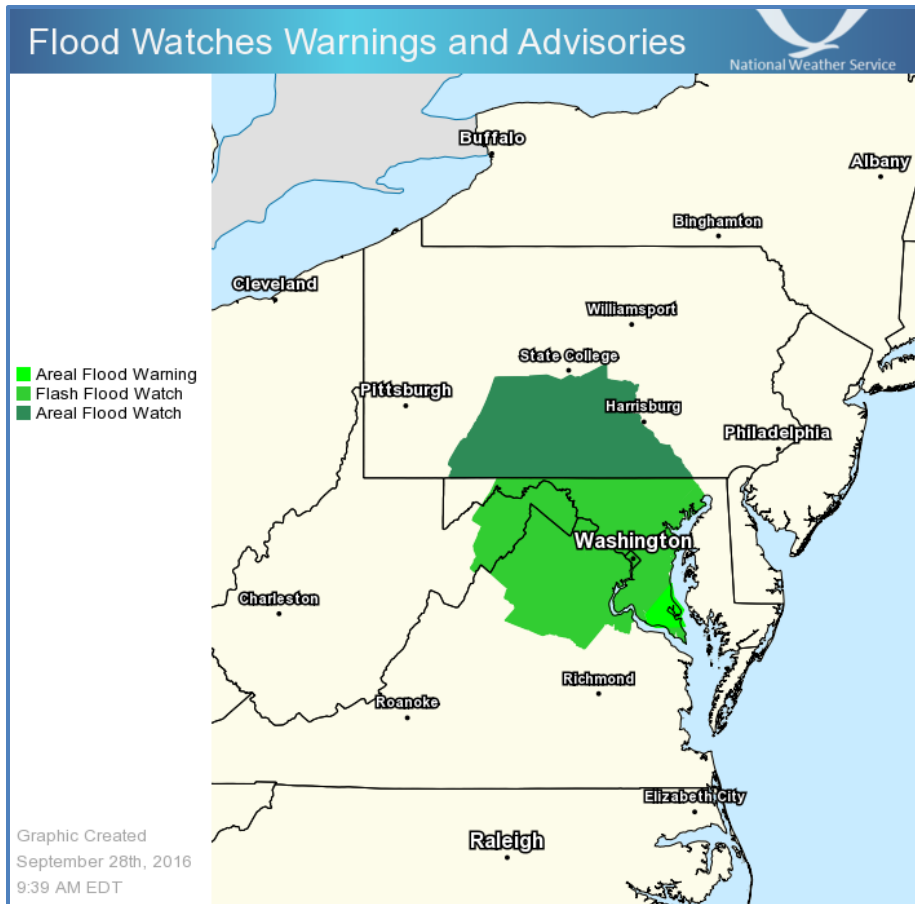
For the latest forecasts go to: www.weather.gov/marfc

Significant Flood Outlook

- Currently we are only forecasting minor flooding at a couple of Potomac River tributaries
- However, we are showing the possibility of more significant flooding across larger portions of the area due to the uncertainty that exists in rainfall amounts and locations

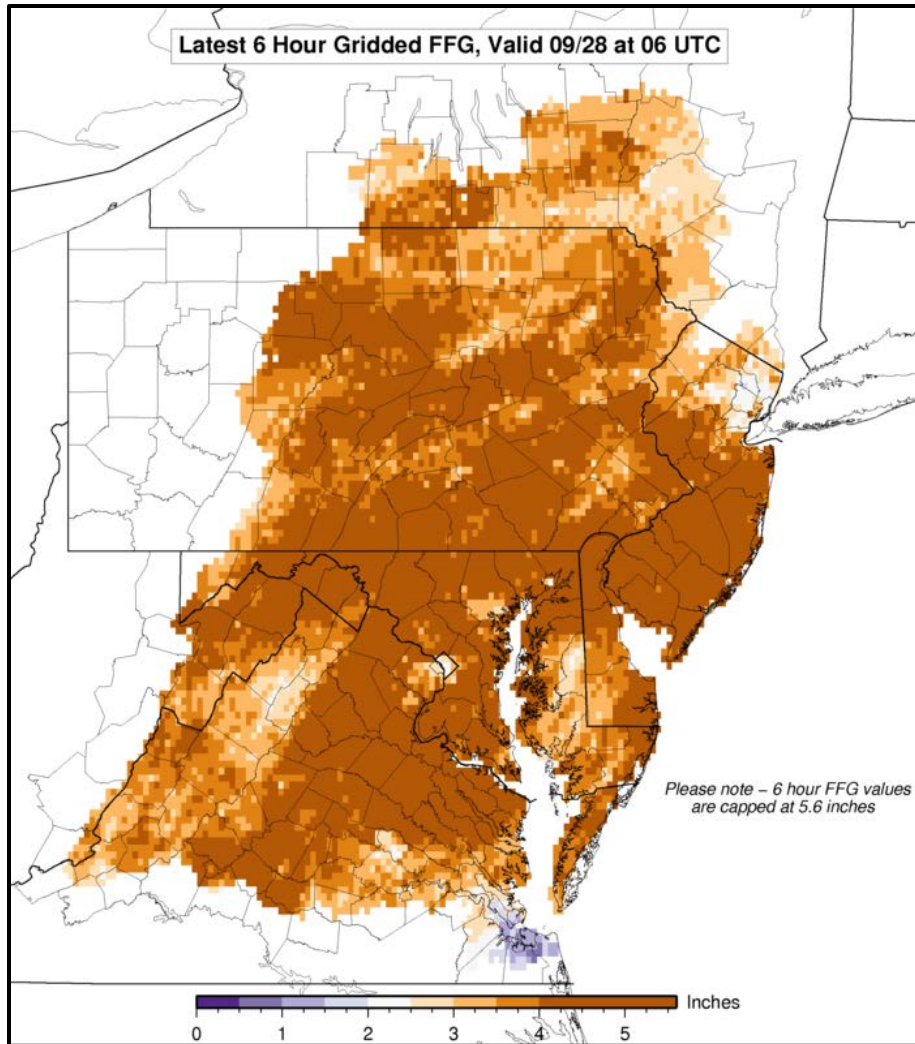


Watches and Warnings



- As of Wednesday morning, a **Flood Warning** is currently in effect for St Mary's and Calvert Counties in Maryland
- Flood watches have been issued by the Sterling and State College forecast offices

Small Streams and Low Lying Areas



Conditions have been fairly dry over the past couple of months which means streams can handle more rainfall than usual

Current Flash Flood Guidance indicates 4-5 inches of rain in a 6-hr period is necessary to cause small stream flooding

This event is expected to be prolonged over an extended period which should reduce the risk of small stream flooding but some small stream flooding is possible

Urban and poor drainage flood prone areas will be at risk in areas of the heavier rainfall

Need more info?

- Contact your local NWS Weather Forecast Office
 - Binghamton, NY <http://weather.gov/bgm>
 - Blacksburg, VA <http://weather.gov/rnk>
 - Mt Holly, NJ <http://weather.gov/phi>
 - State College, PA <http://weather.gov/ctp>
 - New York City, NY <http://weather.gov/okx>
 - Sterling, VA <http://weather.gov/lwx>
 - Wakefield, VA <http://weather.gov/akq>
- Email: [**Robert.Shedd@noaa.gov**](mailto:Robert.Shedd@noaa.gov)

Find MARFC Online at:

- Homepage: <http://weather.gov/marfc>
- Facebook: <https://www.facebook.com/NWSMARFC>
- Twitter <http://twitter.com/NWSMARFC>

Next MARFC Briefing

- **This briefing will be updated with the latest information on Thursday, September 29 around noon**