

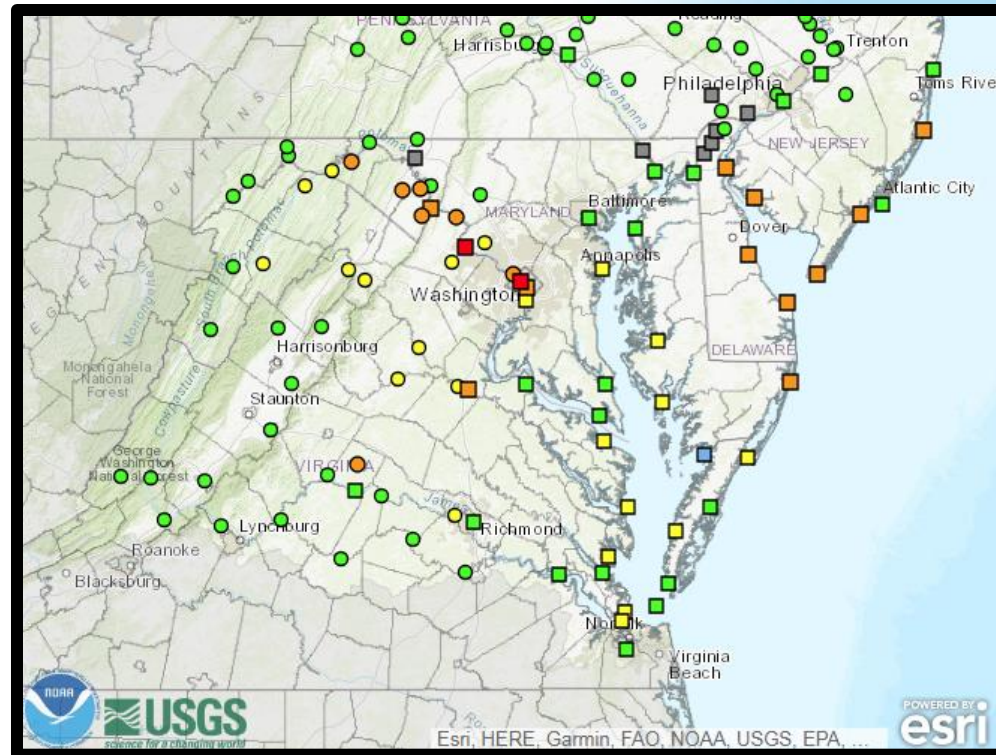
Moderate Flooding Forecast Across Parts of the Mid-Atlantic

Decision Support Briefing #1
As of: 1 pm, June 2, 2018



What Has Changed?

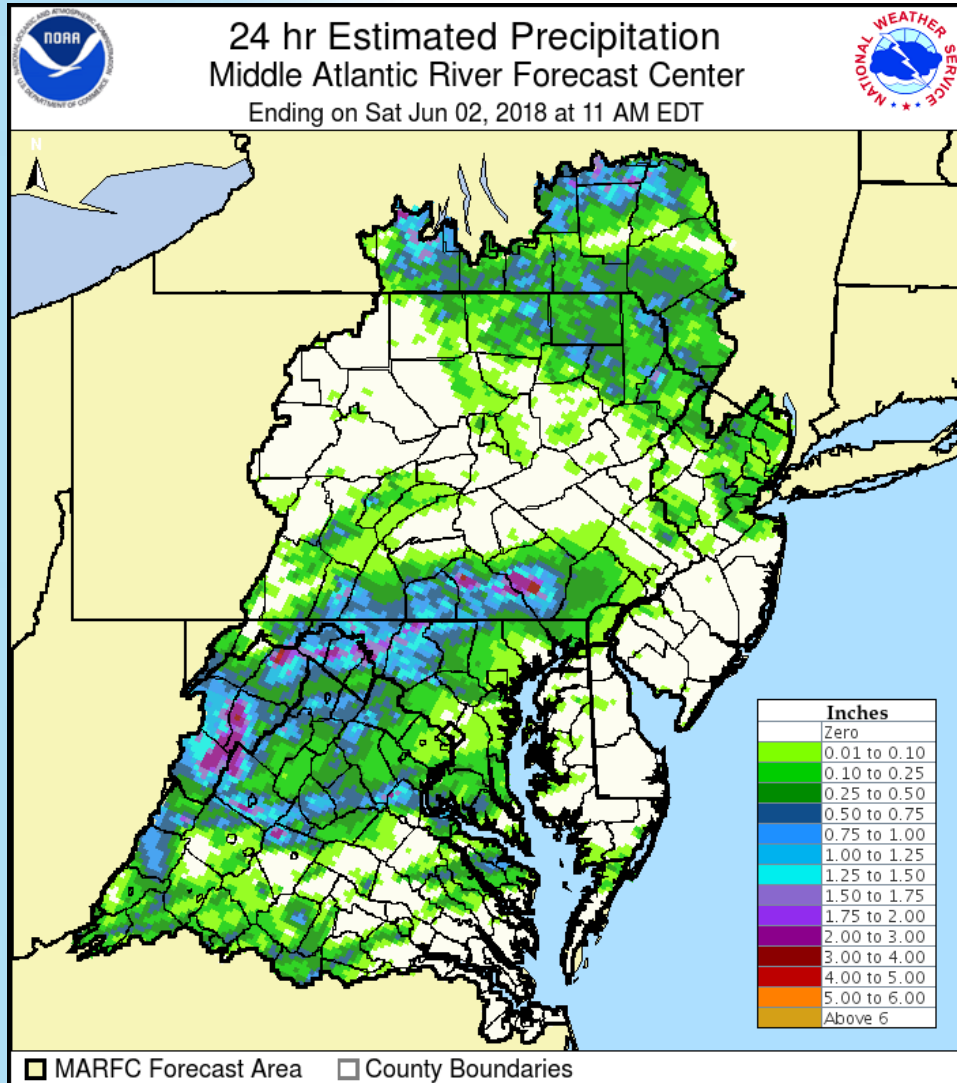
- ✓ Multiple forecasts to exceed flood stage
- ✓ 2 forecasts to exceed moderate flood stage



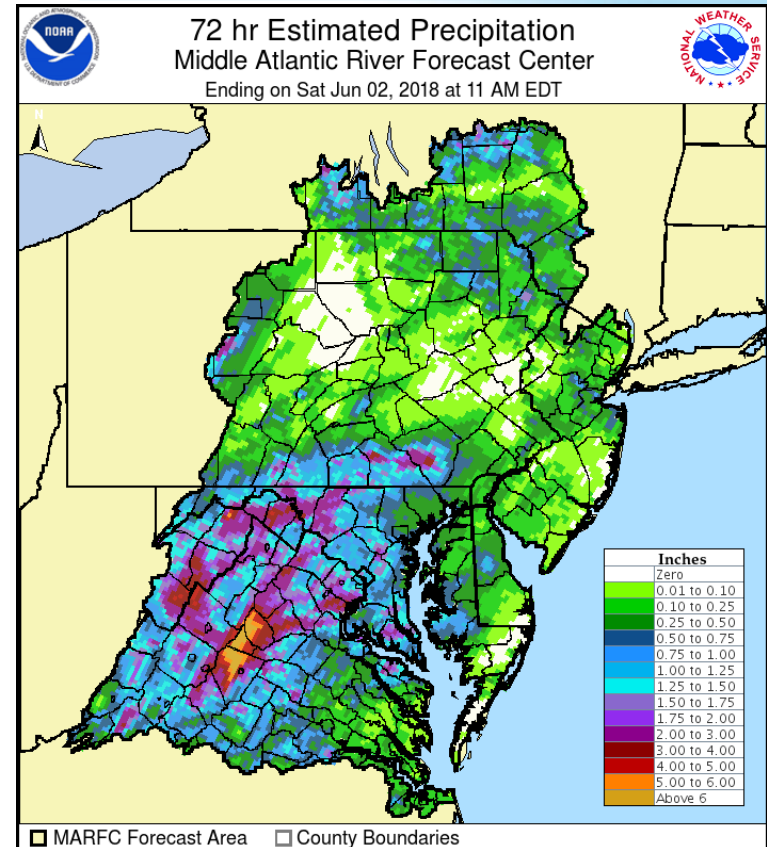
Main Points

HAZARD:	Heavy rain from slow moving thunderstorms
IMPACTS:	Possible flooding to Moderate levels due to recent and forecast heavy rain.
LOCATION:	Areas generally south of the Mason/Dixon line. Heavy rain over southern Pennsylvania yesterday has elevated flood potential in the Lower Susquehanna basin.
TIMING:	Heavy rain is possible this afternoon (Sat, Jun 1, 2018) into Sunday morning.
NOTES:	Areas that have received substantial rainfall recently have a higher risk of flooding.

Observed Precipitation



- ✓ Heavy rain in past 24 hours
- ✓ In the past 72 hours 2" to 6"+ in Virginia.

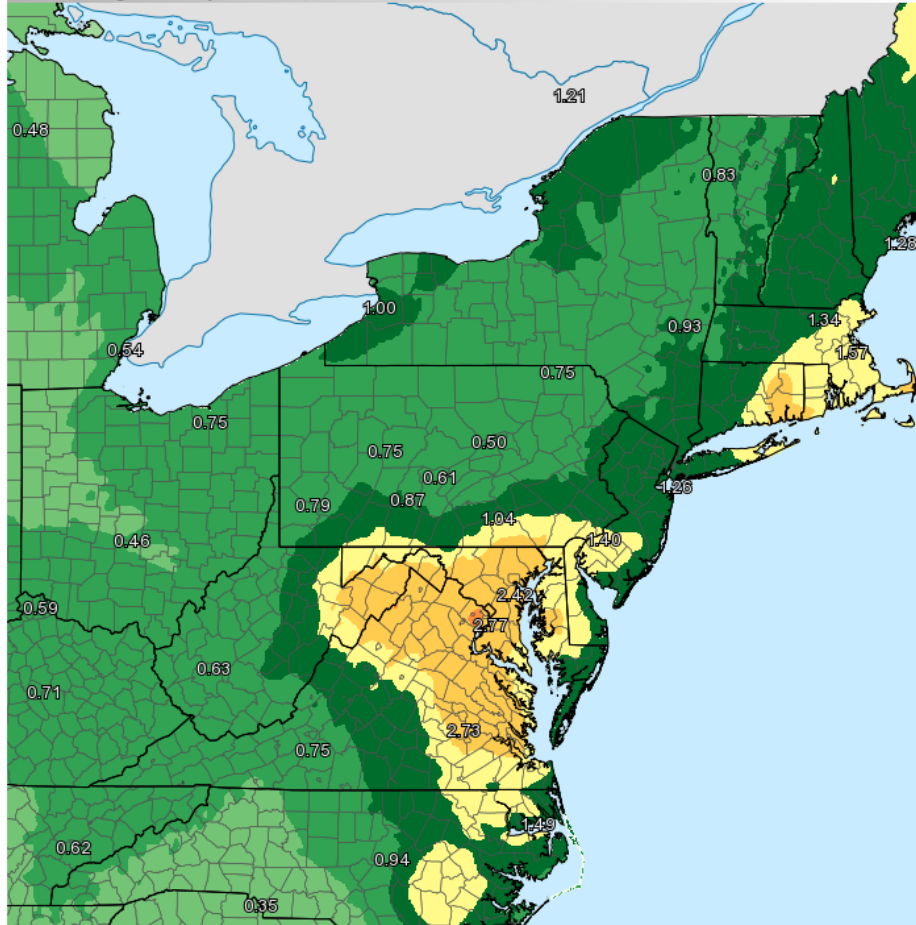


Forecast Precipitation

Forecast Precipitation

National Weather Service

Valid Ending Saturday June 9th, 2018 at 8 AM EDT

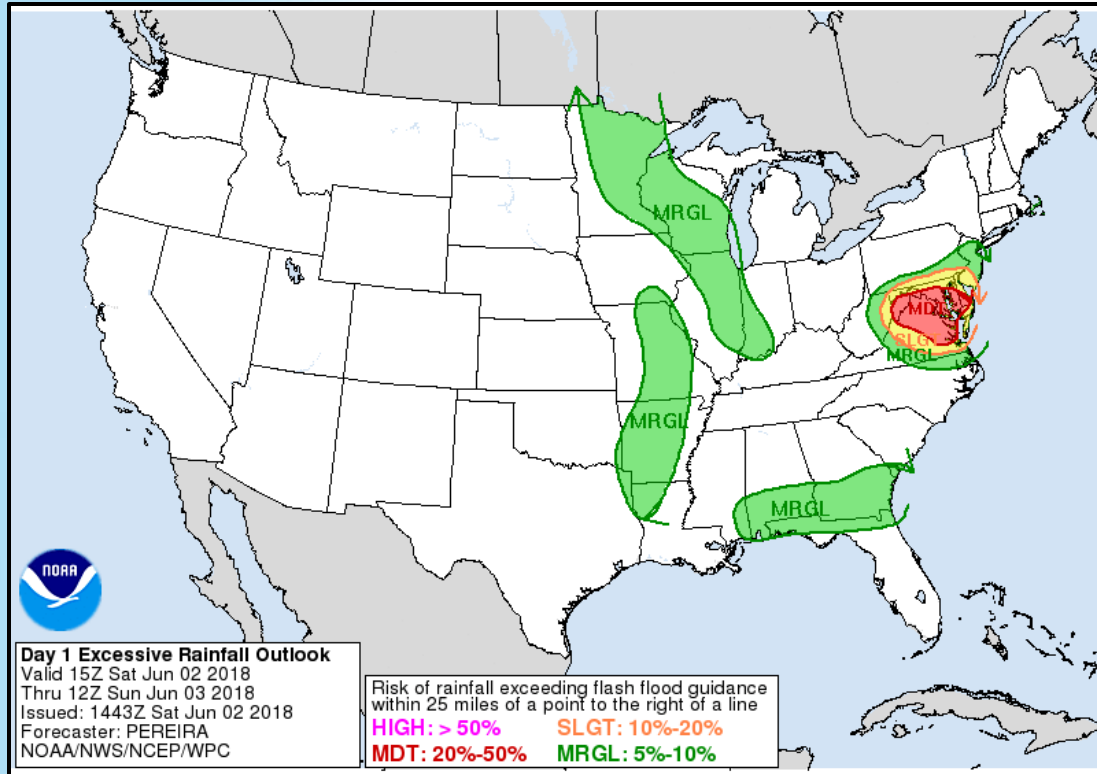


- Up to 0.1 inch
- 0.1 to 0.25 inches
- 0.25 to 0.5 inches
- 0.5 to 1.0 inches
- 1.0 to 1.5 inches
- 1.5 to 2.0 inches
- 2.0 to 3.0 inches
- 3.0 to 4.0 inches
- 4.0 to 6.0 inches
- 6.0 to 8.0 inches
- 8.0 to 10.0 inches
- 10.0 to 15.0 inches
- 15.0 to 20.0 inches
- 20.0 to 30.0 inches
- 30.0 to 50.0 inches

- Insert Text:**
- ✓ Highest forecast amounts south of the PA/MD border.
 - ✓ Widespread 2" to 2.5"+ of rain expected.
 - ✓ Higher point amounts.

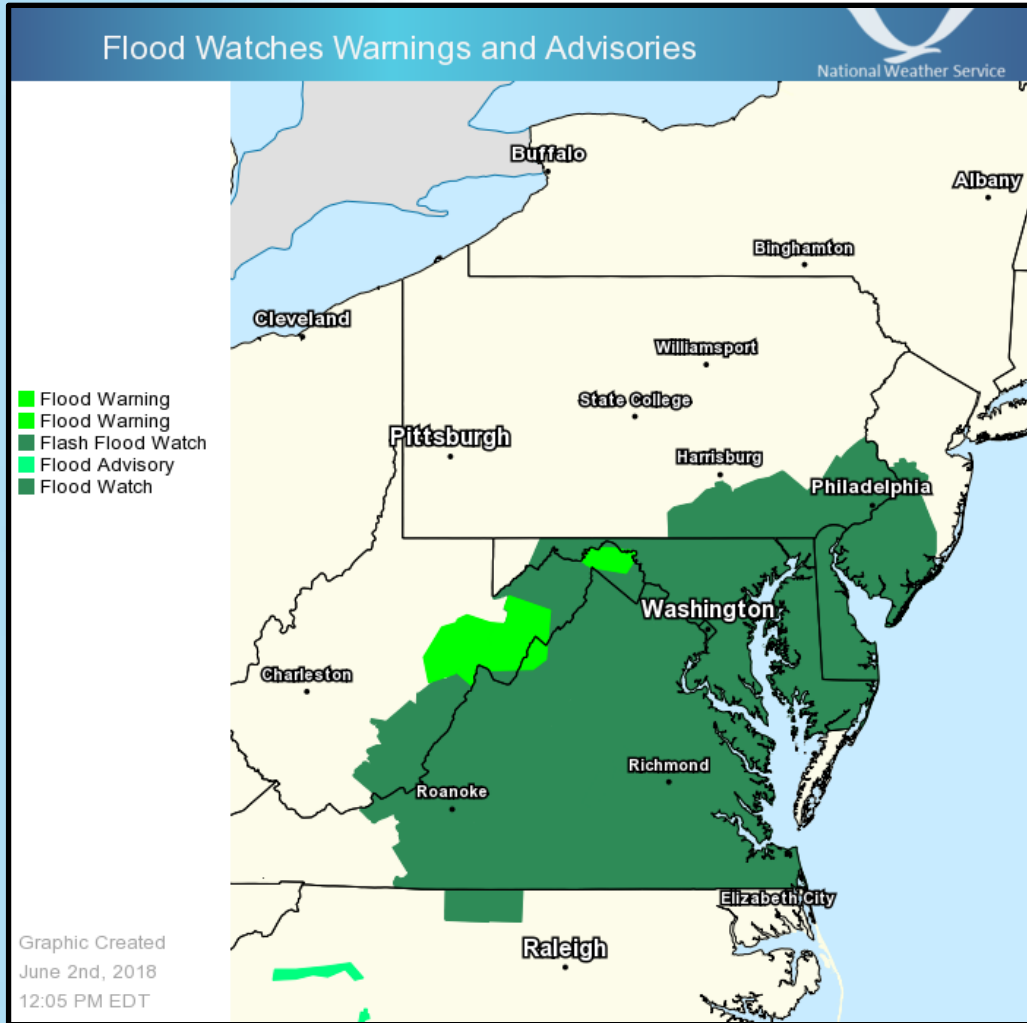
Graphic Created
June 2nd, 2018
12:02 PM EDT

Excessive Precipitation Outlook



- Insert Text:**
- ✓ Moderate risk of excessive rainfall.

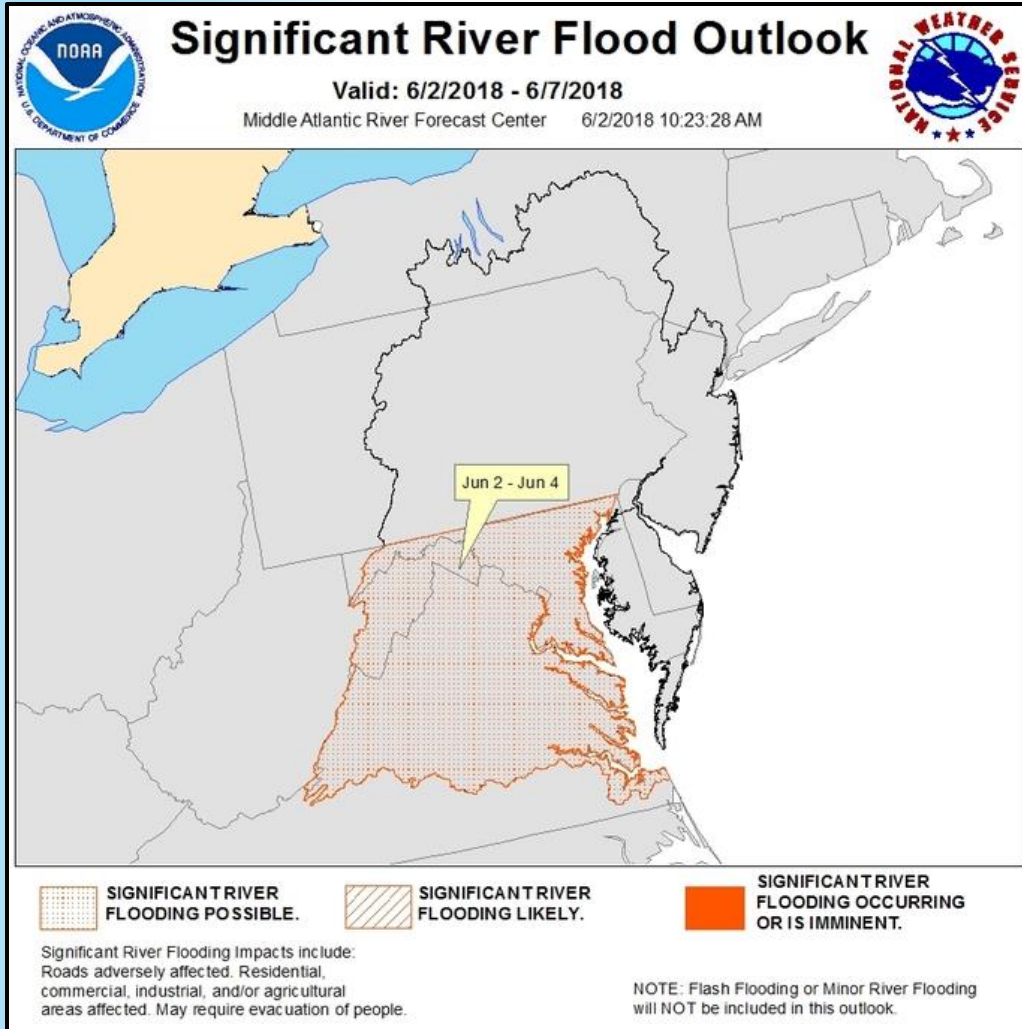
Flood Statements



Insert Text:

- ✓ Flood Watch has been issued for a large portion of the Mid-Atlantic basin.
- ✓ Flood Warnings are also in effect due to current heavy rain.

5 Day Flood Outlook

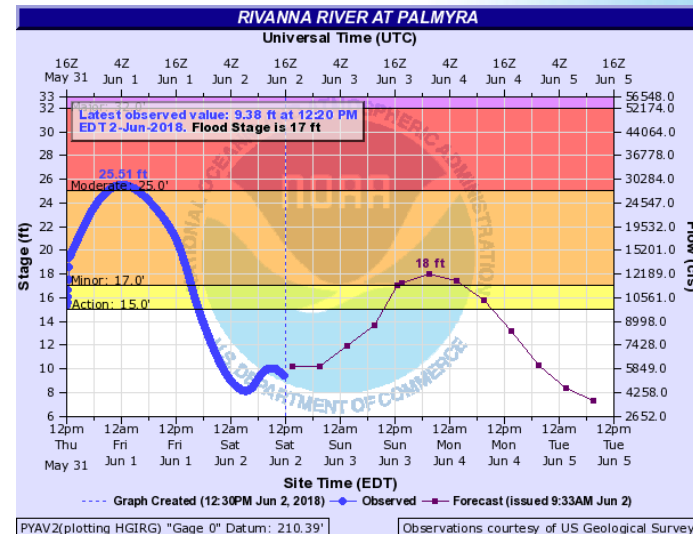
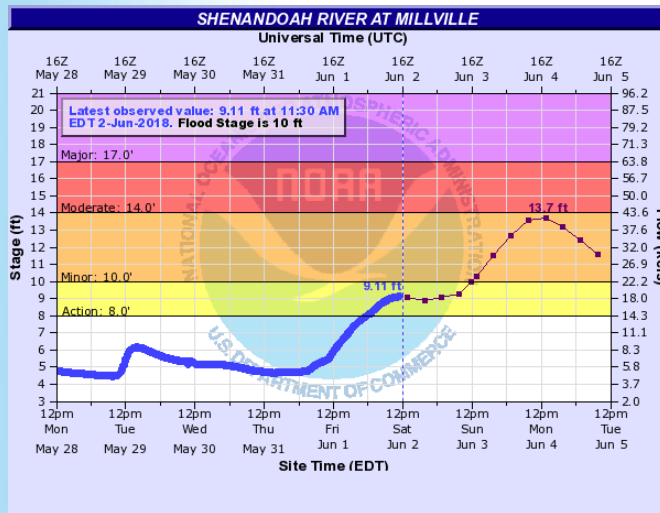
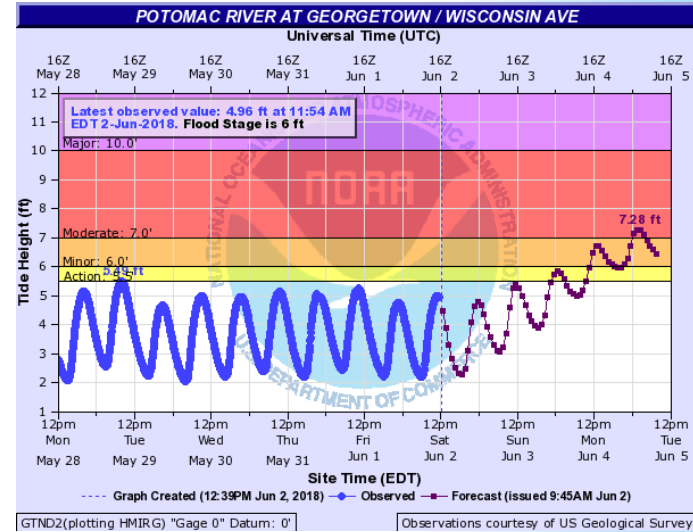
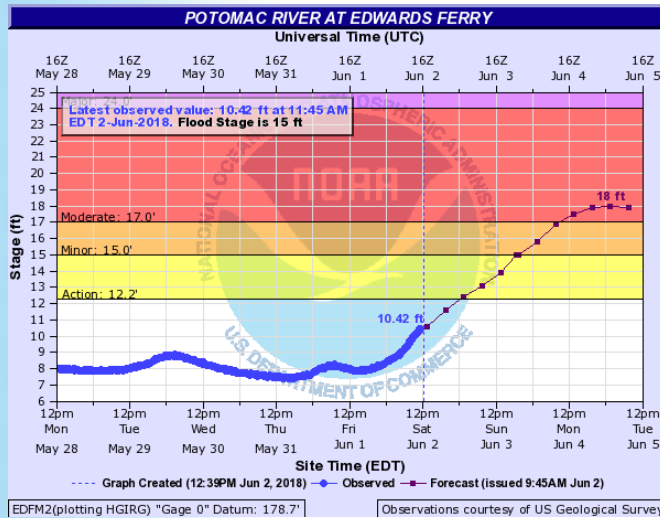


Insert Text:

- ✓ Significant River Flooding is possible over the next couple days due to expected heavy rainfall.



Select Forecast Hydrographs



Event Summary

- ✓ **Recent heavy rain has increased the likelihood of flooding.**
- ✓ **Highest rainfall amounts in the last 3 days have been over Maryland and Virginia.**
- ✓ **Highest forecast rainfall is also over Maryland and Virginia.**

Latest Forecast Information

Information in this briefing package may change with updated forecast information. Please refer to the offices below for the latest official forecasts

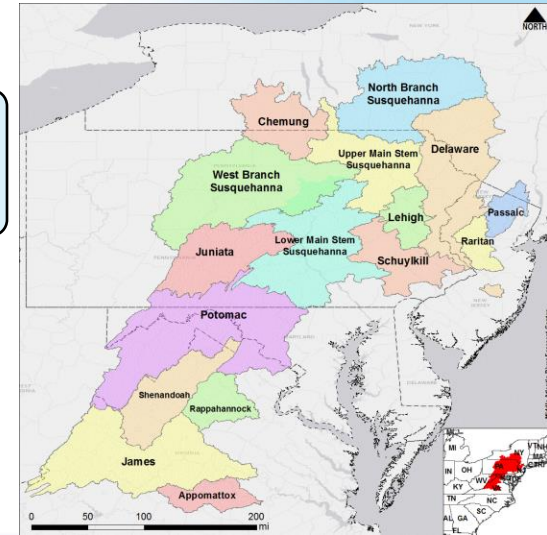
Office	Web Page	Social Media
Binghamton, NY	http://weather.gov/bgm	@NWSBinghamton
Blacksburg, VA	http://weather.gov/rnk	@NWSBlacksburg
Mount Holly, NJ	http://weather.gov/phi	@NWS_MountHolly
State College, PA	http://weather.gov/ctp	@NWSStateCollege
New York City, NY	http://weather.gov/okx	@NWSNewYorkNY
Sterling, VA	http://weather.gov/lwx	@NWS_BaltWash
Wakefield, VA	http://weather.gov/akq	@NWSWakefieldVA

Forecasts also available on the AHPS web site: <http://water.weather.gov>
 Or the MARFC web site: <http://www.weather.gov/marfc>

Contact and Next Briefing Information

Next Briefing
When: Afternoon of Sunday, June 3, 2018

Briefing Webpage:
http://www.weather.gov/marfc/self_briefing



Web:
<http://www.weather.gov/marfc>



E-mail:
Robert.Shedd@noaa.gov



Facebook:
NWSMARFC



Twitter:
NWSMARFC

Disclaimer: *The information contained within this briefing is time-sensitive, do not use after Sunday, June 3, 2018*