

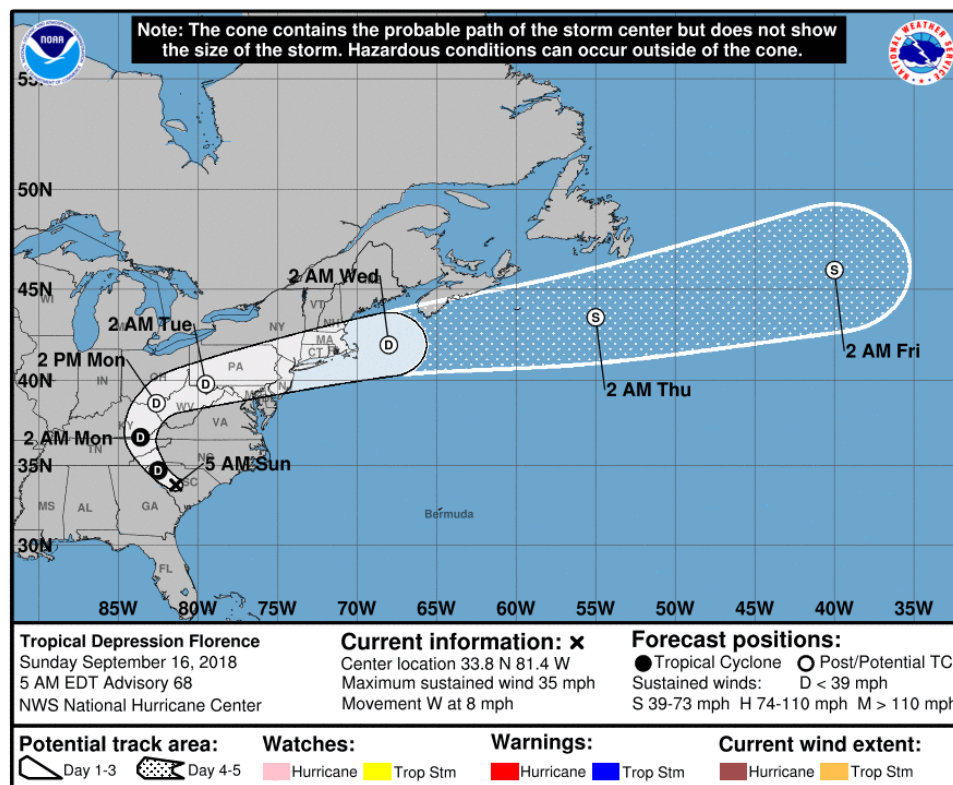
Mid-Atlantic Flood Potential From Florence

Decision Support Briefing
As of: Noon, Sunday, September 16



What Has Changed?

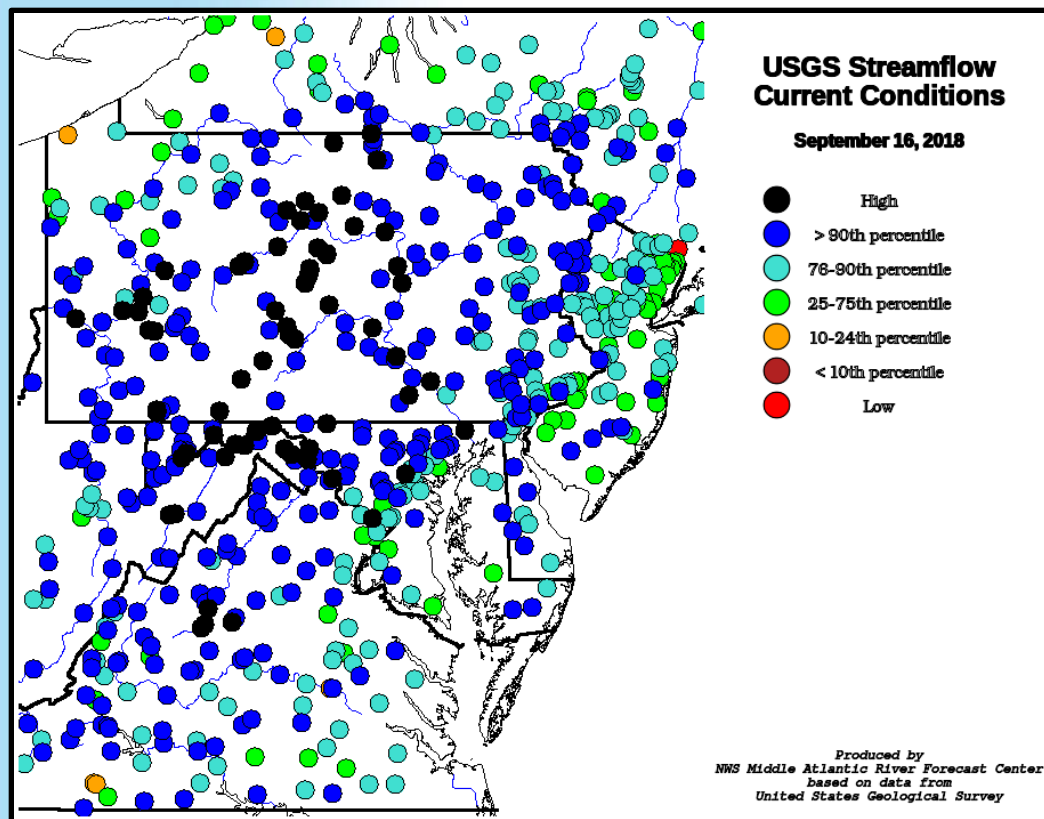
✓ Use Checkmark Bullets



Main Points

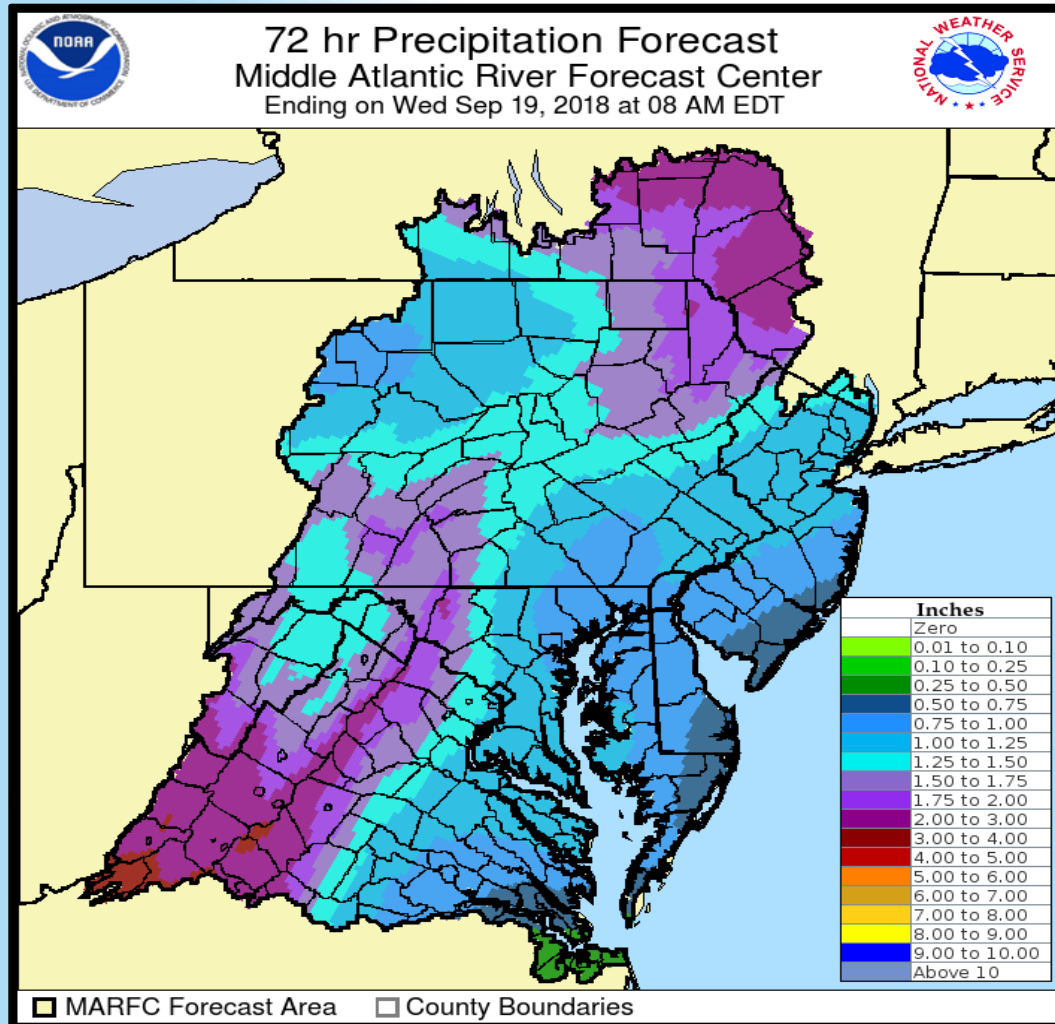
HAZARD:	Heavy Rain and River Flooding
IMPACTS:	Minor to moderate river flooding is possible. However, based on the current rainfall forecasts we are not currently forecasting any flooding at MARFC forecast locations
LOCATION:	Heaviest rain is expected in SW Virginia and along the Blue Ridge Mountains. River flooding is possible in the James, Potomac, Shenandoah, and Juniata River basins
TIMING:	Heavy rain moves into the region late Sunday and moving out by Wednesday morning. River flooding would likely begin in the Monday morning to Wednesday timeframe and could extend towards the end of the week
NOTES:	This briefing primarily covers larger river system. Small stream, urban and coastal/tidal flooding is also likely from this event.

Current River Conditions



- ✓ River levels are generally well above normal levels for mid-September
- ✓ Soil moisture conditions are also very wet especially across Maryland and Pennsylvania which will result in higher rates of runoff

Forecast Precipitation



- ✓ Up to 4 inches of rain forecast in SW Virginia with widespread 1-3 inches across rest of region. These amounts are slightly less than earlier forecasts
- ✓ Locally heavier amounts can be expected especially along the Appalachian Mtn. Expect some amounts of 6-8 inches.
- ✓ Rain will be starting in SW Virginia later today and moving towards the northwest. Should be out of region by Wednesday morning

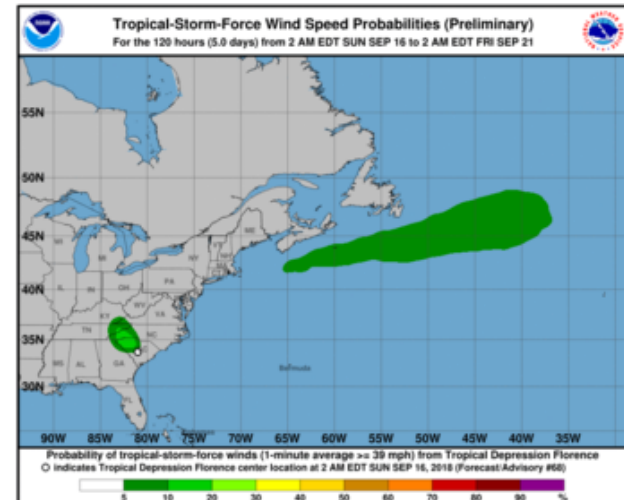
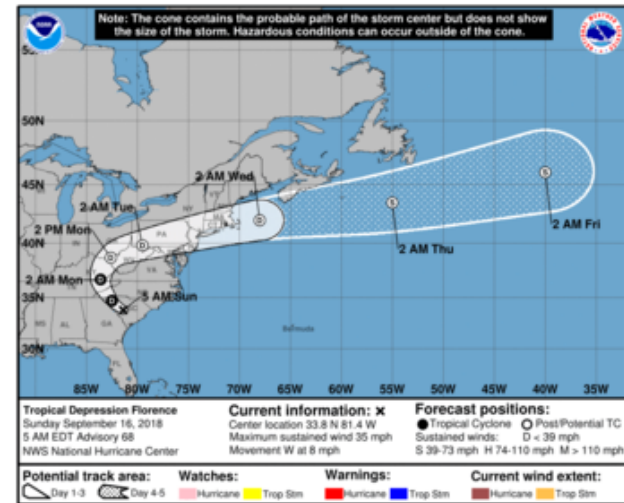


Key Messages for Tropical Depression Florence

Advisory 68: 5:00 AM EDT Sun Sep 16, 2018

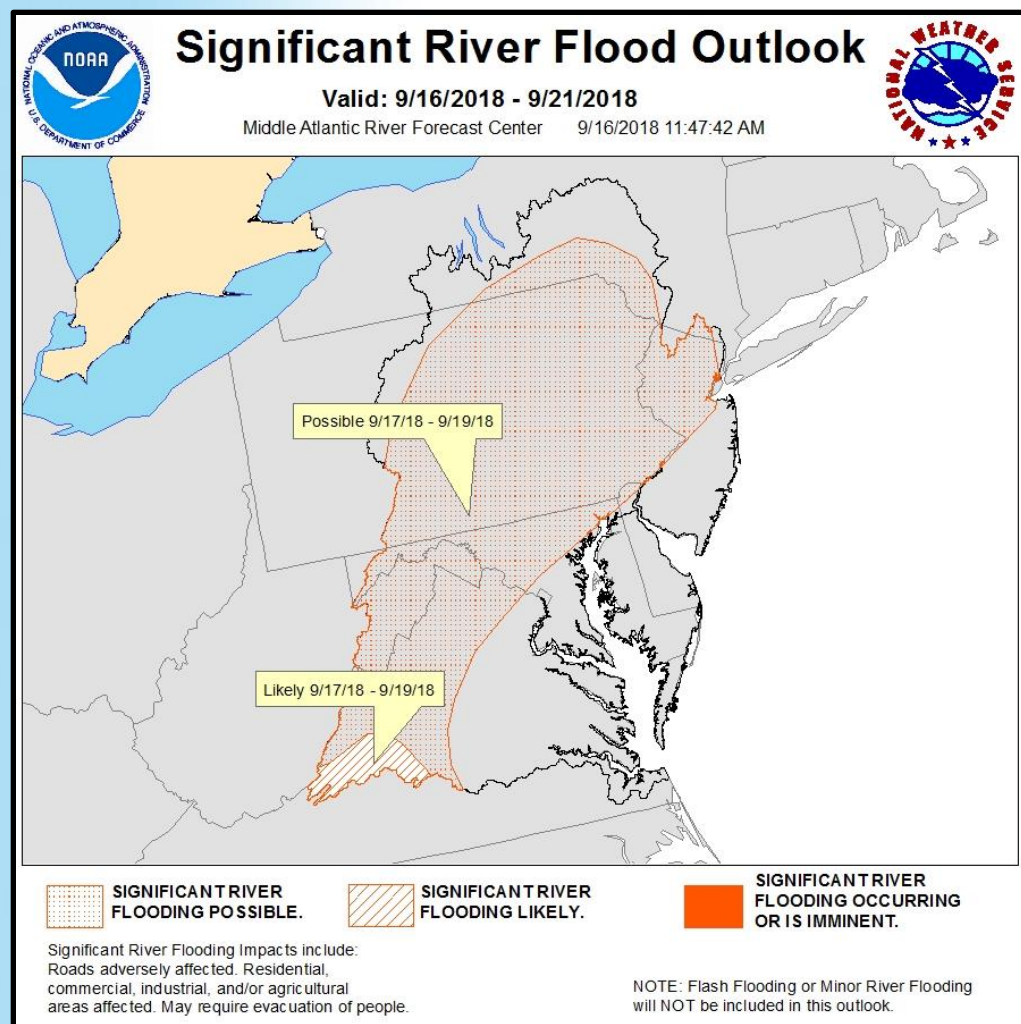
1. Life-threatening, catastrophic flash floods and prolonged significant river flooding are likely over portions of the Carolinas and the southern to central Appalachians from western North Carolina into west-central Virginia and far eastern West Virginia through early this week, as Florence continues to move slowly inland. In addition to the flash flood and flooding threat, landslides are also possible in the higher terrain of the southern and central Appalachians across western North Carolina into southwest Virginia.

2. Large swells affecting Bermuda, portions of the U.S. East Coast, and the northwestern and central Bahamas will continue this week, resulting in life-threatening surf and rip currents.



For more information go to hurricanes.gov

5 Day Flood Outlook



- ✓ We are currently not forecasting any flooding in the Mid-Atlantic
- ✓ However locally heavier rainfall can result in flood levels
- ✓ Rivers most likely to see flooding
 - ✓ James River
 - ✓ Potomac River
 - ✓ Shenandoah River
 - ✓ Juniata River
- ✓ Small stream and coastal/tidal flooding is also likely

Latest Forecast Information

Information in this briefing package may change with updated forecast information.
Please refer to the offices below for the latest official forecasts

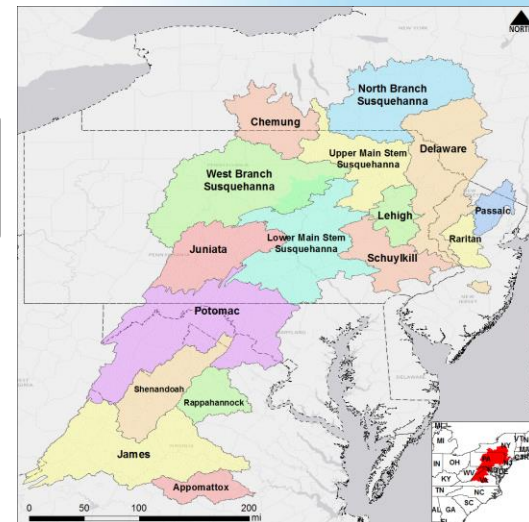
Office	Web Page	Social Media
Binghamton, NY	http://weather.gov/bgm	@NWSBinghamton
Blacksburg, VA	http://weather.gov/rnk	@NWSBlacksburg
Mount Holly, NJ	http://weather.gov/phi	@NWS_MountHolly
State College, PA	http://weather.gov/ctp	@NWSStateCollege
New York City, NY	http://weather.gov/okx	@NWSNewYorkNY
Sterling, VA	http://weather.gov/lwx	@NWS_BaltWash
Wakefield, VA	http://weather.gov/akq	@NWSWakefieldVA

Forecasts also available on the AHPS web site: <http://water.weather.gov>
Or the MARFC web site: <http://www.weather.gov/marfc>

Contact and Next Briefing Information

Next Briefing
When: By Monday Noon

Briefing Webpage:
http://www.weather.gov/marfc/self_briefing



Web:
<http://www.weather.gov/marfc>



E-mail:
Robert.Shedd@noaa.gov



Facebook:
NWSMARFC



Twitter:
NWSMARFC

Disclaimer: The information contained within this briefing is time-sensitive, do not use after 7am Monday, Sept 17