



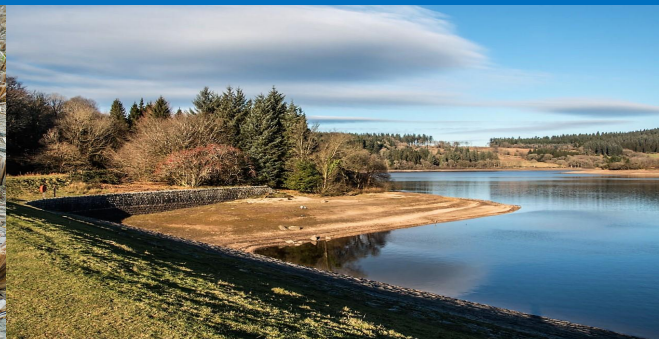
Drought Information Statement for the Mid-South

Valid 09/22/2023

Issued By: NWS Memphis, TN

Contact Information: sr-meg.wx@noaa.gov

- This product will be updated October 5, 2023, or sooner if drought conditions change significantly.
- Please see all currently available products at <https://drought.gov/drought-information-statements>.
- Please visit <https://www.weather.gov/meg/DroughtInformationStatement> for previous statements.



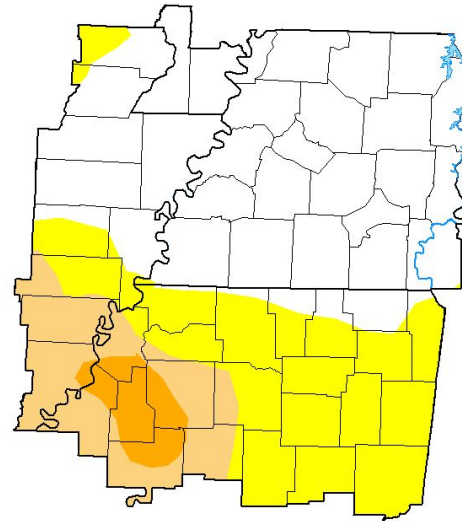


U.S. Drought Monitor

Link to the [latest U.S. Drought Monitor](#) for the Mid-South

- Moderate to severe drought conditions are present in the Delta Region.
- Abnormally dry conditions are present as well in portions of eastern Arkansas and the remainder of north Mississippi.
- Drought intensity and extent
 - D2 (Severe Drought): Mainly portions of northwest Mississippi.
 - D1 (Moderate Drought): The Mississippi Delta region.
 - D0 (Abnormally Dry): Far northeast Arkansas and the Delta Region.

U.S. Drought Monitor Memphis, TN WFO



September 19, 2023
(Released Thursday, Sep. 21, 2023)
Valid 8 a.m. EDT

	Drought Conditions (Percent Area)					
	None	D0-D4	D1-D4	D2-D4	D3-D4	D4
Current	55.42	44.58	16.36	4.01	0.00	0.00
Last Week 09-12-2023	79.54	20.46	10.53	0.00	0.00	0.00
3 Months Ago 06-20-2023	37.33	62.67	10.84	0.00	0.00	0.00
Start of Calendar Year 01-01-2023	60.52	39.48	0.00	0.00	0.00	0.00
Start of Water Year 09-27-2022	8.51	91.49	26.75	2.41	0.00	0.00
One Year Ago 09-20-2022	58.31	41.69	17.50	0.00	0.00	0.00

Intensity

None	D1 Moderate Drought	D2 Severe Drought
D0 Abnormally Dry	D3 Extreme Drought	D4 Exceptional Drought

The Drought Monitor focuses on broad-scale conditions. Local conditions may vary. For more information on the Drought Monitor, go to <https://droughtmonitor.unl.edu/About.aspx>

Author

Richard Heim
NCEI/NOAA



droughtmonitor.unl.edu

Image Caption: U.S. Drought Monitor valid 8 am EDT September 19, 2023.





Recent Change in Drought Intensity

Link to the latest [4-week change map](#) for the Mid-South

- Four-Week Drought Monitor Class Change
 - Drought worsened: Much of north Mississippi and a portion of eastern Arkansas.
 - No change: portions of east-central Arkansas and northwest Mississippi.
 - Drought improved: No notable improvement.

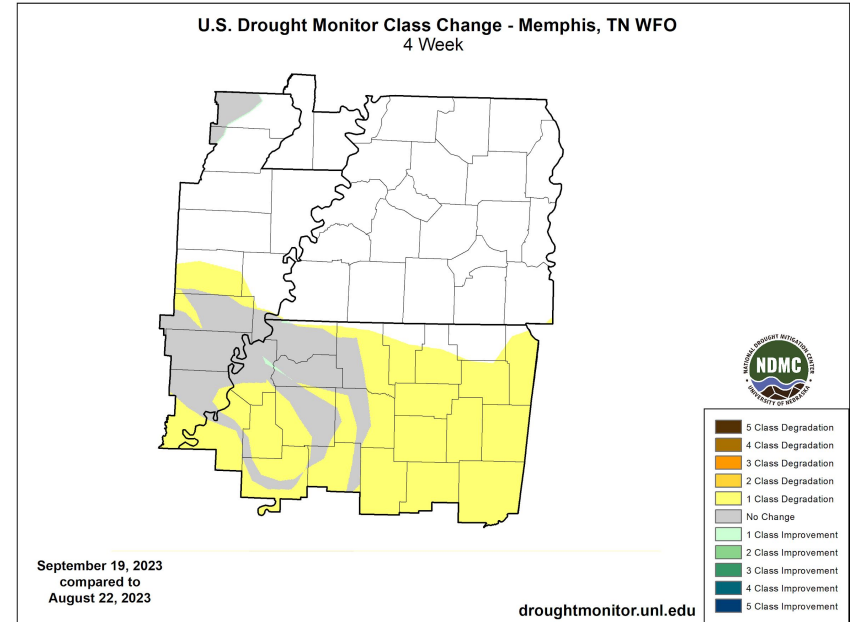


Image Caption: U.S. Drought Monitor 4-week change map valid 8 am EDT September 19, 2023.



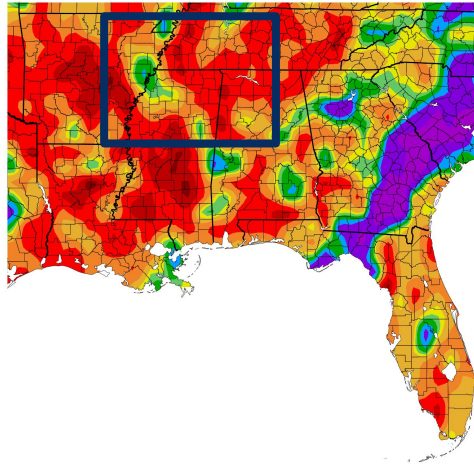


Precipitation

Over the past 30 days from the [High Plains Regional Climate Center](#)

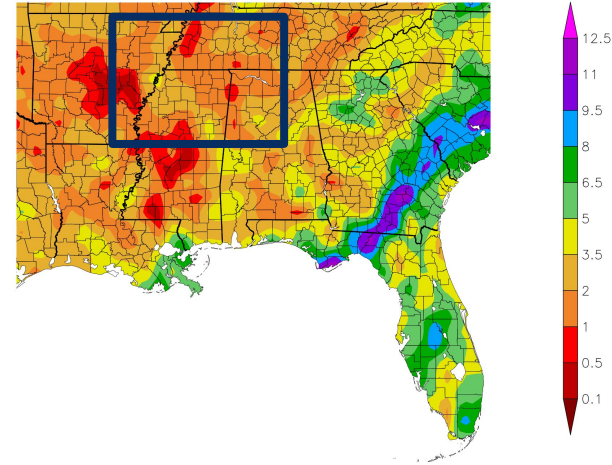
- Generally light and scarce precipitation, 2” or less across the Mid-South.
- The Mid-South was generally below normal, but there are some pockets of near normal or slightly above normal precipitation over the last 30 days.

Percent of Normal Precipitation (%)
8/23/2023 – 9/21/2023



Generated 9/22/2023 at HPRCC using provisional data.

Precipitation (in)
8/23/2023 – 9/21/2023



NOAA Regional Climate Centers 023 at HPRCC using provisional data.

NOAA Regional Climate Center

Image Captions:

Left - [Percent of Normal Precipitation for NWS-Southern Region East](#)

Right - [Precipitation for NWS- Southern Region East](#)

Data Courtesy High Plains Regional Climate Center.

Data over the past 30 days ending September, 21, 2023



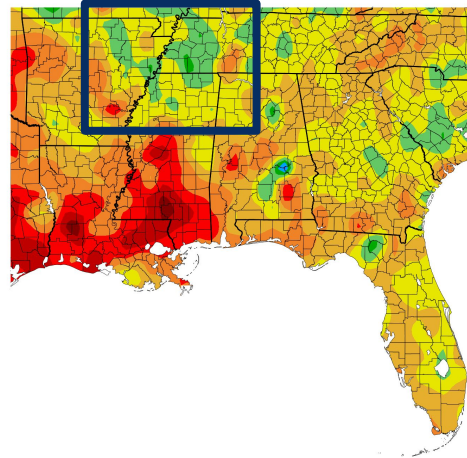


Temperature

Data over the past 30 days from the [High Plains Regional Climate Center](#)

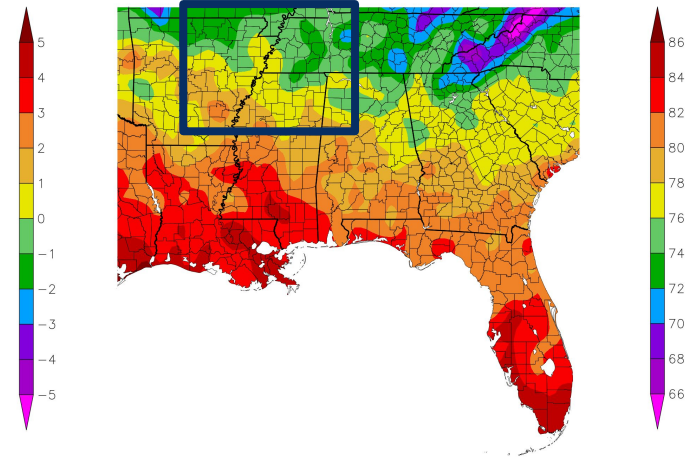
- Temperatures have ranged from the mid 70s to the mid 80s across the region for the last 30 days.
- The temperatures named above ranged from -2 (below normal) to 2 (above normal) degrees Fahrenheit.

Departure from Normal Temperature (F)
8/23/2023 – 9/21/2023



Generated 9/22/2023 at HPRCC using provisional data.

Temperature (F)
8/23/2023 – 9/21/2023



NOAA Regional Climate Centers 23 at HPRCC using provisional data.

NOAA Regional Climate Centers

Image Captions:

Left - [Departure from Normal Temperature](#)

Right - [Average Temperature](#)

Data Courtesy High Plains Regional Climate Center.

Data over the past 30 days ending September, 21, 2023





Summary of Impacts

Links: See/submit [Condition Monitoring Observer Reports \(CMOR\)](#) and view the [Drought Impacts Reporter](#)

Hydrologic Impacts

- Main takeaway: The Mississippi River at Memphis is already below historic low-water threshold values for this time of year. The extended river forecast keeps the river very low which will continue to impact barge and river traffic.

Agricultural Impacts

- There are no known impacts at this time.

Fire Hazard Impacts

- Above normal wildland fire activity has been observed this month across northeast Arkansas and north Mississippi.

Other Impacts

- There are no known impacts at this time.

Mitigation Actions

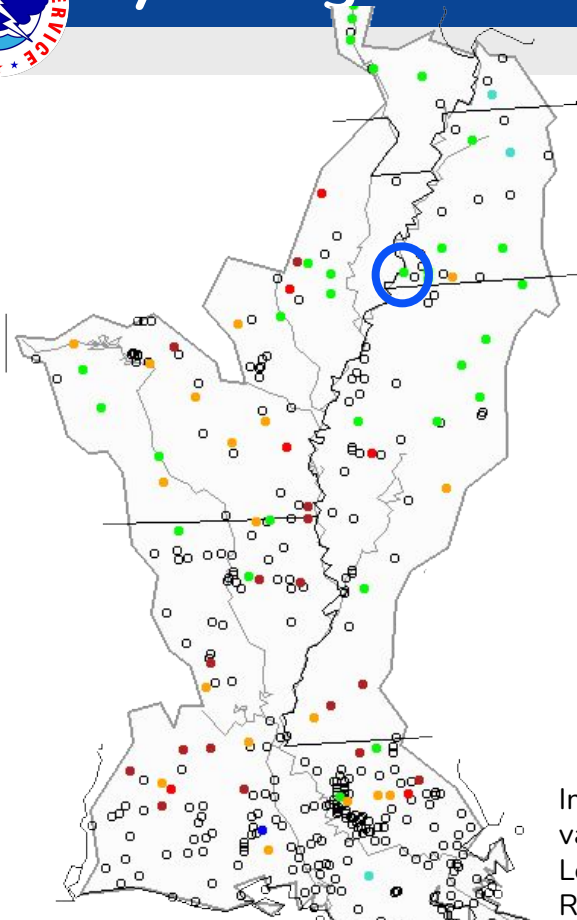
- Please refer to your municipality and/or water provider for mitigation information.





Hydrologic Conditions and Impacts

Friday, September 22, 2023 13:30ET



- The Mississippi River at Memphis is already below low water threshold values for this time of year. The extended river forecast keeps the river very low with no significant rain events forecasted upstream.
- The Tennessee river valley feeds into the Mighty Mississippi, and is also experiencing low water levels.

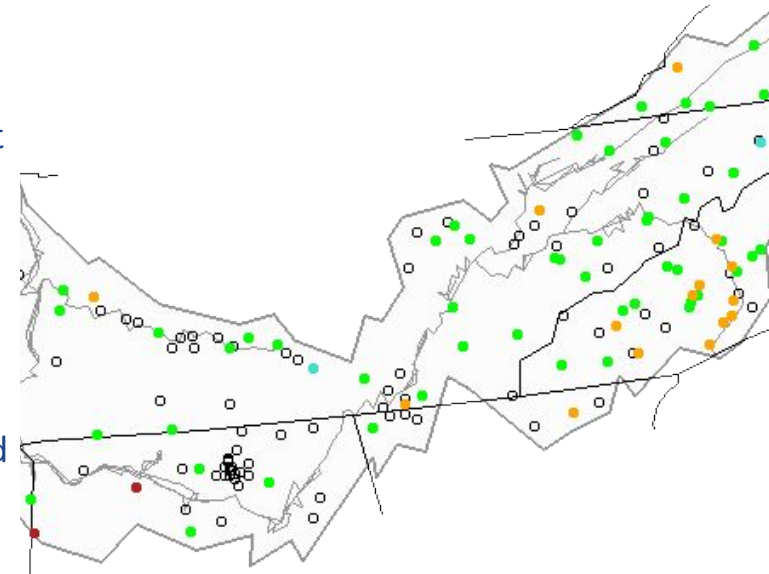


Image Caption: USGS 7 day average streamflow HUC map valid 09/15/2023
 Left: Lower Mississippi River
 Right: Tennessee River Basin

Explanation - Percentile classes						
Low	<10	10-24	25-75	76-90	>90	High
	Much below normal	Below normal	Normal	Above normal	Much above normal	



Fire Hazard Impacts

Link to [Wildfire Potential Outlooks from the National Interagency Coordination Center](#).

- Above normal significant wildland fire potential for northeast Arkansas and North Mississippi for September with conditions returning to normal for October.
- Burn Bans currently in effect for:
 - Arkansas: None.
 - Missouri: None.
 - Mississippi: None.
 - Tennessee: N/A.

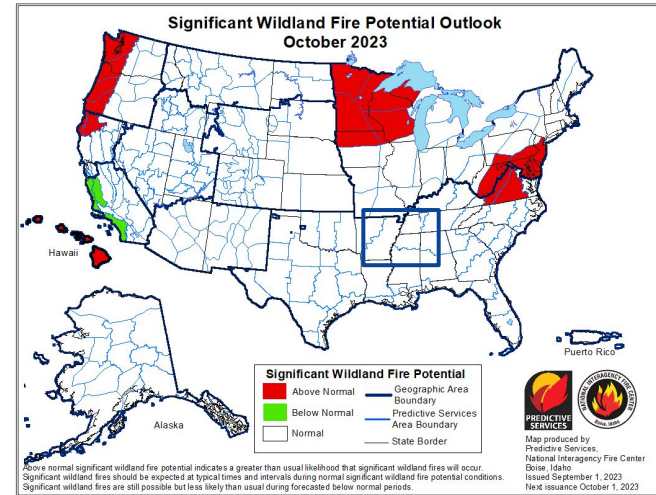
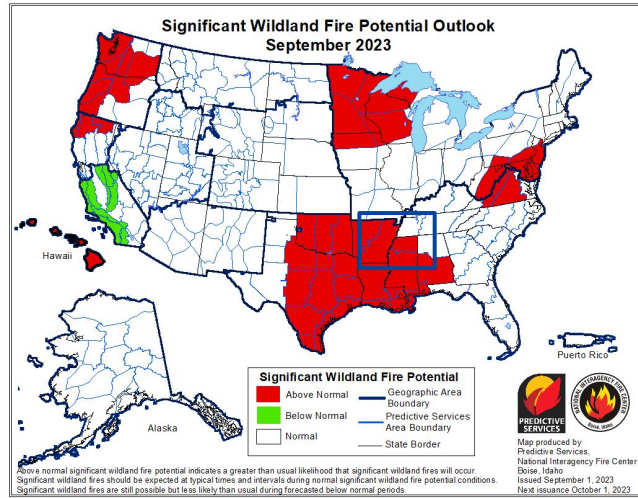


Image Caption: [Significant Wildland Fire Potential Monthly Outlook](#) for August 2023





Seven Day Precipitation Forecast

- Generally low forecast precipitation amounts (QPF) values up to 1.00” across the Mid-South.
- The highest rainfall looks to be west of the Mississippi, missing much of the Ohio River Basin.

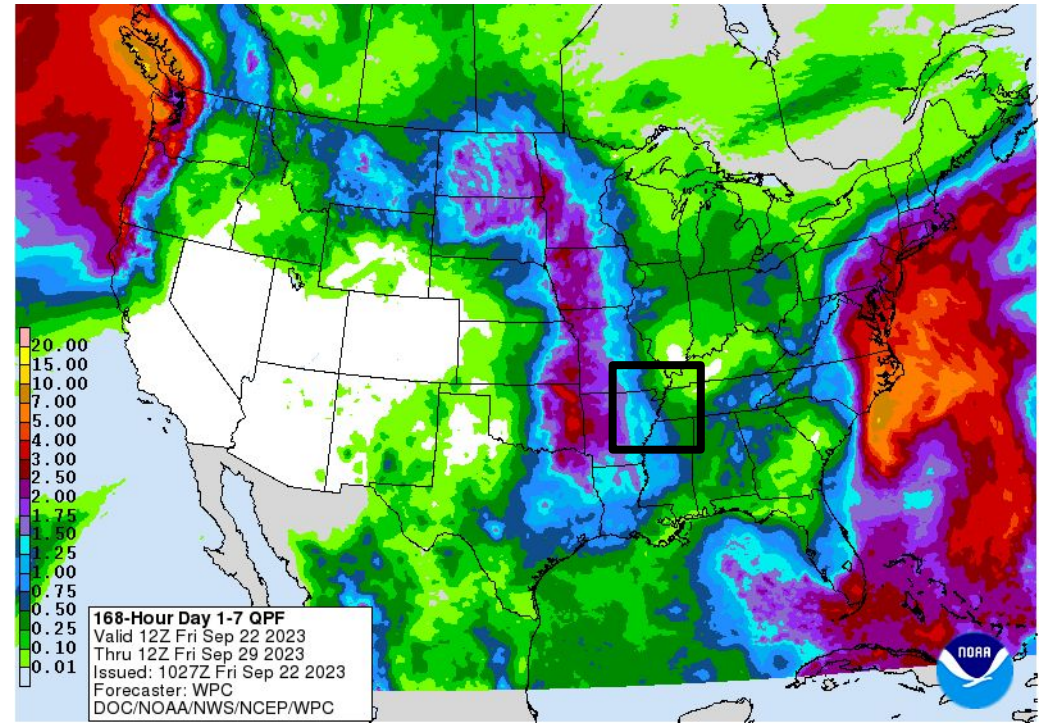


Image Caption: Weather Prediction Center [7-day precipitation forecast](#) valid Tuesday September 22 until Tuesday September 29.



Long-Range Outlooks

The latest monthly and seasonal outlooks can be found on the [CPC homepage](#)

- September temperatures are leaning above normal for the first month of meteorological fall.
- September precipitation is has equal chances and is slightly leaning below normal across the region.
- In summary, September is trending to be warmer and drier than normal.

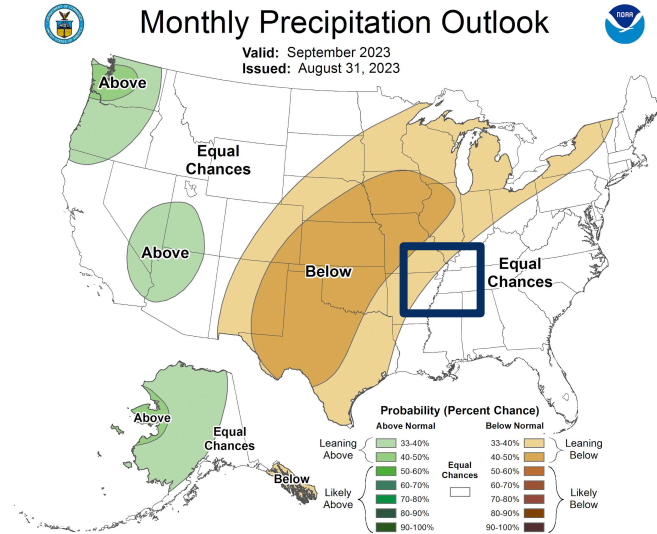
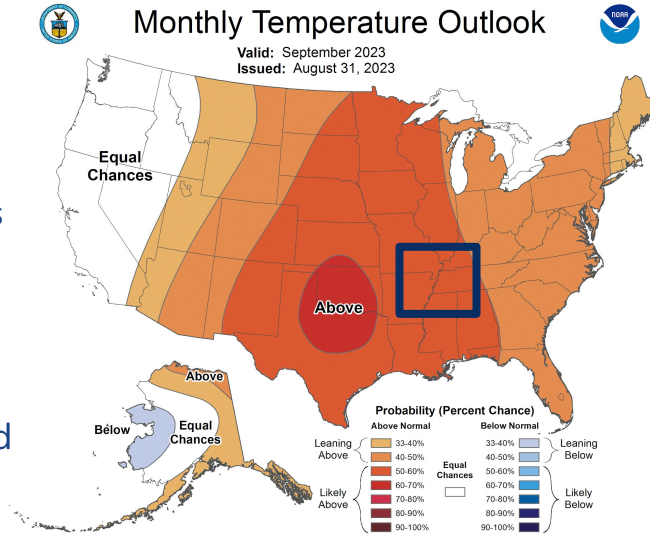


Image Captions:

Left - [Climate Prediction Center Monthly Temperature Outlook](#),

Right - [Climate Prediction Center Monthly Precipitation Outlook](#).

Valid MM YYYY





Drought Outlook

The latest monthly and seasonal outlooks can be found on the [CPC homepage](#)

- A small portion of Moderate Drought is likely to persist in the Delta Region.
- An area to monitor for drought development will be far northeast Arkansas.

U.S. Monthly Drought Outlook Drought Tendency During the Valid Period

Valid for September 2023
Released August 31, 2023

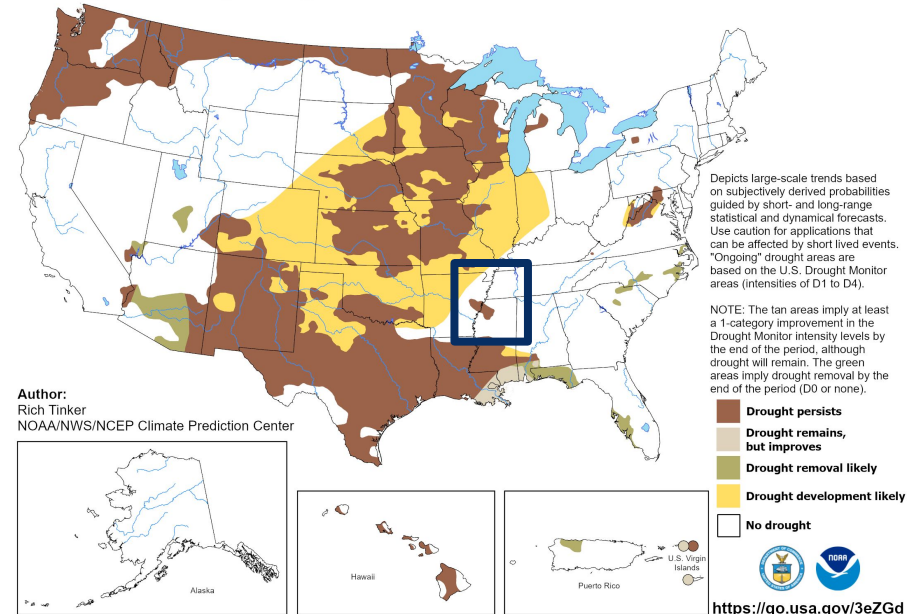


Image Caption:

Climate Prediction Center Monthly Drought Outlook Released
08/31/2023 valid for 09/2023

Links to the latest:

- [Climate Prediction Center Monthly Drought Outlook](#)
- [Climate Prediction Center Seasonal Drought Outlook](#)

