



Are You Really Prepared?

Annual Life Assessment of WFO S Ice Storm

Patrick J. Spoden, D...
Daniel...
It was an interesting...
ways...

Tree damage in...
\$185-237...
at least 36 deaths in KY
Plus 5...
SW Indiana



Disaster Declarations



3.5 million cubic yds
\$185-237...
at least 36 deaths in KY
Plus 5...
SW Indiana

Courier-Journal

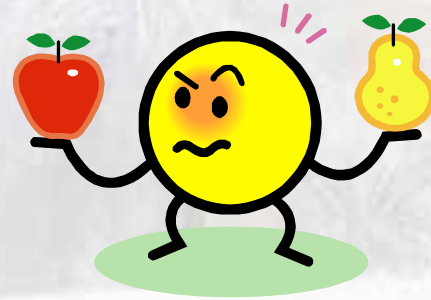
Decision Support



- HWO – Up to 1 week ahead of time
- Special PNS on preparation issued Sunday
- Media/EM Conference Call- Monday
- News Conference – Best thing we did!
- Forecast nearly perfect - unfortunately!
- Still – impact even worse than expected

What We Should Have Done

- Held conference call Friday before or over the weekend
- Watch the products for more consistency
- Management staff would have stayed at the office



Time Line

ZR-----SN
 27-30 hrs ~6 hrs

Sun 1/25 Mon 1/26 Tue 1/27 Wed 1/28 Thu 1/29 Fri 1/30 Sat 1/31 Sun 2/1 Mon 2/2

Strongly Worded Products-Special PNS

-EM/Media call
 -News Conf.
 -prep at the office

-Lost Power and phones Tue Aft
 -Lost contact with some staff members
 -Lost most radar data, obs., NWR's

Some staff MIA

Finally had contacted all staff

-Still no dial tone
 -ROC arrives with KVWX dish

-Satellite dish arrives
 -allows us to send products

Partially back up
 -KVWX radar up

Back to normal

Multiple Daily conference calls with Regional HQ and Backup Offices on cell phones

Limited number of staff members at office

****Service Backup – Springfield, MO & Louisville, KY- Did not miss a product that is normally issued.****

HISTORIC ICE STORM OF 2009

JANUARY 26-28

Saint Louis

70

0.25" Louisville

64

Evansville

1"



Paducah

1"

0.25"

Poplar Bluff

1"

0.25"

57

0.25"

68

Nashville

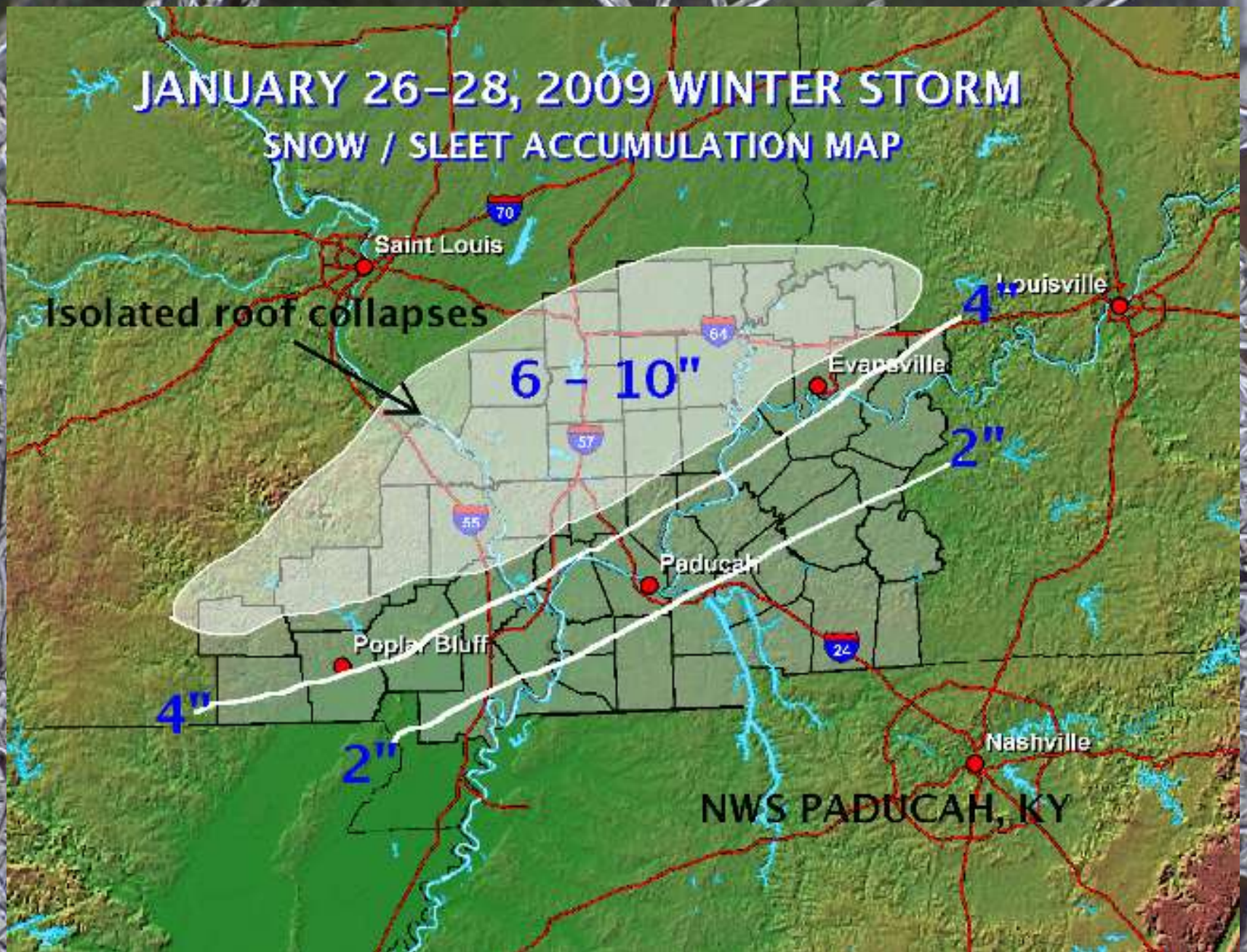
24

NWS PADUCAH, KY

Locally 1.5 to 2"
Catastrophic icing



JANUARY 26-28, 2009 WINTER STORM SNOW / SLEET ACCUMULATION MAP











Impacts:

- No electricity for days-weeks
- Travel difficult to impossible for several days
- Damage to staff homes/cars
- Every tree in Western KY was damaged
- Staff afraid of looting/leaving family and residences
- Gas shortage – actually power to gas stations
- Kerosene shortage/price gouging
- Generator shortage – coming in by the truckload



Impacts cont.

- Food spoiling
- AT&T cell towers down – no communication
- No batteries available
- Stores allowing only limited number of people in at a time and for only essentials
- Some places taking only cash – others only credit
- Cleaning up damage (trees on houses/cars etc)
- Period of cold weather followed ice storm



NWS Paducah Impacts and Lessons Learned:



- Never missed a product due to great work from Louisville and Springfield staffs
- Forecasters from Kansas City and Topeka were sent to assist at Springfield
- We briefly sent 3 forecasters to Springfield for 48 hours.
- No satellite phone (we have one now)
- County EMA had everything we needed right next door, but we did not know it
 - Get an MOA with them!
 - Fort Campbell too!
- Used HAM radio to contact EMA and get more generator fuel
- Staff used office as shelter
 - We have made improvements to make office more of a shelter
 - Cots, blankets, toiletries, food, a makeshift shower for emergencies only



Preparation

- Have an up-to-date disaster kit
- Gas up your vehicles
- Have cash on hand
- Have a plan for what to do with your family if you have to work
 - Think about your pets
- Test your backup generator - fill with fuel
- Fill extra cans for generator and vehicles
- Prepare for no communications – HAM radio?
- Create a plan in the event you cannot contact everyone (Call down chart): We had 1 person MIA for a period of time



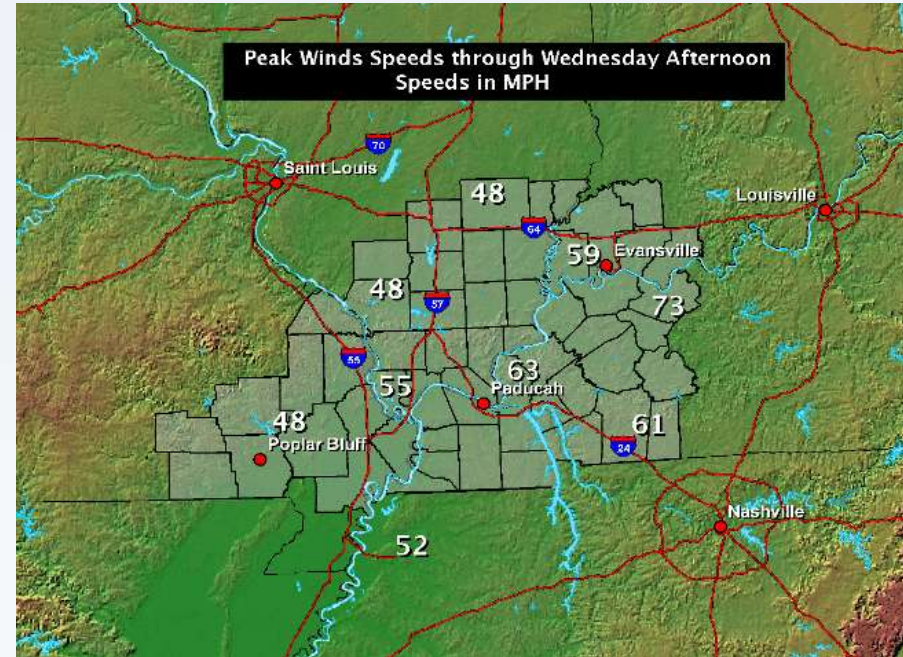
What Then?

- Worked with EMs/Red Cross and media to create a massive campaign to help people create disaster kits



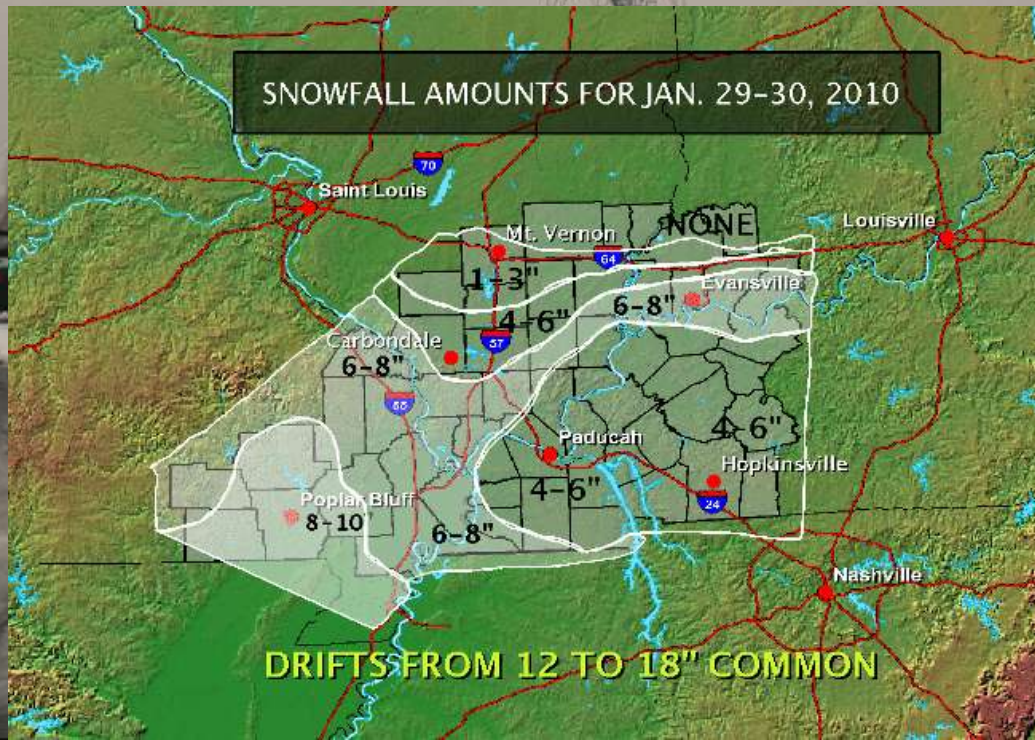
But the effects did not end there...

- February 11, 2009
 - Massive Wind Storm
 - 50-70 mph winds
 - Conference call
 - Attempted to contact utility companies as work still being done
 - High Wind Warning – Discussed lowering criteria in order to issue the warning rather than an advisory
 - Lost more power during this storm, but quickly gained it back



The Effects Still Linger...

- Concerned about any mention of ice
- How will we handle the next ice storm?
 - We will try comparisons
 - Did this with late Jan Snowstorm





3-Day Emergency Kit



Month 1: October

Canned Food Items (Quantity):

- Tuna (4)
- Chicken (2)
- Chili (2)
- Canned Pasta (8)
- Soups (2)
- Vegetables (8)
- Juices (1 six pack)
- Fruit (3)
- Peanut Butter (1)

Other Items:

- Powder Milk (1)
- Box Cereal (1)
- Granola Bars (1 box),
- Trail Mix (1 box)
- Jelly (1)
- Crackers (1 box)
- Sugar
- Salt/Pepper
- Water (1 gallon per person per day)

Month 2: November

Personal Hygiene Items:

- Toothbrush (4)
- Toothpaste (1)
- Moist Wipes (2)
- Hand Sanitizer (1)
- Toilet Paper (1)
- Feminine Items
- Brush/Comb (1)
- Bar Soap (1)
- Prescription medicines
- Baby items

Cooking Supplies:

- Charcoal (1)
- Lighter Fluid (1)
- Aluminum Foil (1)
- Paper Plates (1)
- Paper Bowls (1)
- Plastic Cups (1)
- Plastic Ware (1)
- Paper Towels (2)
- Manual Can Opener (1)
- Zip lock Bags (2)

Month 3: December

Miscellaneous:

- Radio FM/AM Weather (1)
- Flashlight/Battery Operated lamps/oil lanterns/light sticks (several)
- Batteries – Different sizes (Several)
- Smoke Detector/Carbon Monoxide Detectors
- Basic First Aid Kit (1)
- Matches/Butane Lighters (1)
- Storage container(s) for the kit
- Whistle (1)
- Bleach (1)
- Pain Reliever (1)
- Antacid (1)
- Pencil/Paper (1)
- Corded Phone (1)
- Candles (Several)
- Blankets/Towels (4)
- Basic Tools
- Plastic Sheeting
- Duct Tape
- Clothing Items
 - Sturdy Shoes
 - Work Gloves
 - Hat
 - Rain Gear
 - Extra Socks
- Other Items: _____