

# Climate Review for the month of June 2014

Presented by:  
National Weather Service  
Newport/Morehead City

# Summary

June was warm, but rainfall differed across the area due to summertime convection. During the month, high pressure dominated the region with typical summer time piedmont trough inland. Several locations within eastern NC received above normal rainfall amounts versus others which were a little bit drier. Additional atmospheric features assisted to produce rainfall events such as upper level disturbances and cold front passages that became stationary across the coverage area. In general, eastern NC received 2 to 7 inches of rain. The area continues to remain drought-free.

The average max temperatures across eastern NC were in the 80s, while average low temperatures were ranged 65 to 71 degrees. Overall, the average temperature was near to slightly above normal for the month.

*DISCLAIMER : The climate data provided are preliminary and have not undergone final quality control by NCDC. Therefore...this data is subject to revision.*

# Average Temperatures within our CWA

	Avg_Max	Avg_Max Normal	Avg_Min	Avg_Min Normal
Beaufort	83.7	na	70.7	na
Cape Hatteras	80.0	81.5	67.9	68.1
New Bern	89.1	84.9	68.6	66.5
Greenville	88.2	85.7	67.0	65.5
Kinston	88.7	88.9	65.5	65.0
Williamston	86.3	84.9	66.7	64.3
Plymouth	87.0	87.0	65.4	65.0
Bayboro	87.6	86.1	64.6	65.6

Average temperatures were near to slightly above normal.

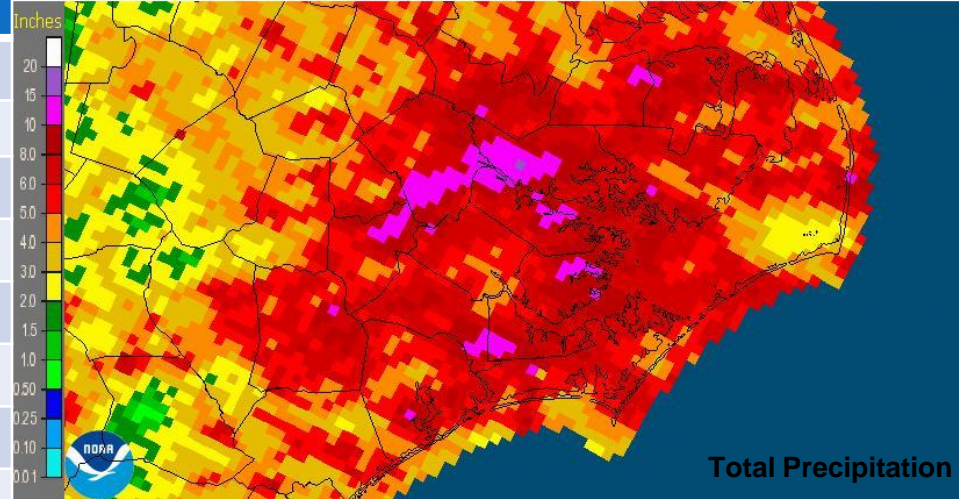
# Max and Min Temperature within our CWA

	MAX	MIN
<b>Beaufort</b>	88	58
<b>Cape Hatteras</b>	84	56
<b>New Bern</b>	97	54
<b>Greenville</b>	95	48
<b>Kinston AG</b>	97	46
<b>Williamston</b>	94	50
<b>Plymouth</b>	96	45
<b>Bayboro</b>	95	47

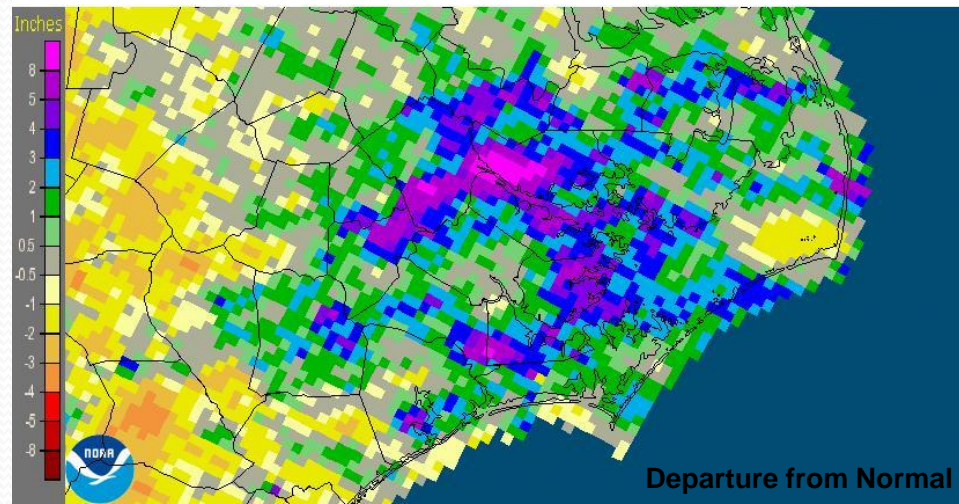
# June's Rain versus Normal

	Precipitation (inches)	Normal	Differences
Beaufort	4.81	na	na
Cape Hatteras	1.71	3.82	-2.11
New Bern	3.49	4.8	-1.31
Greenville	4.45	4.38	0.07
Kinston	2.23	4.48	-2.25
Williamston	7.57	4.46	3.11
Plymouth	2.24	5.03	-2.79
Bayboro	6.84	4.76	2.08

Newport/Morehead City, NC (MHX): June, 2014 Monthly Observed Precipitation  
Valid at 7/1/2014 1200 UTC- Created 7/3/14 23:56 UTC



Newport/Morehead City, NC (MHX): June, 2014 Monthly Departure from Normal Precipitation  
Valid at 7/1/2014 1200 UTC- Created 7/3/14 23:56 UTC



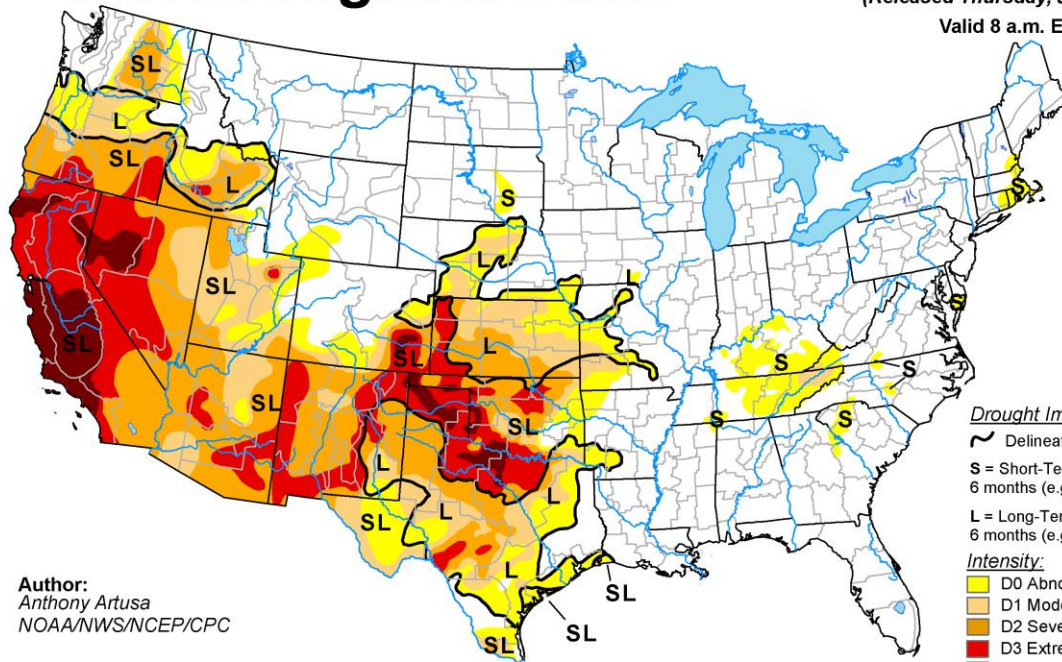
A good portion of the CWA received above normal precipitation during typical summertime sea breeze convection.

Various locations only received 2 inches, while others reached up to 7 inches.

# U.S. Drought Monitor

July 1, 2014  
(Released Thursday, Jul. 3, 2014)

Valid 8 a.m. EDT



Author:  
Anthony Artusa  
NOAA/NWS/NCEP/CPC

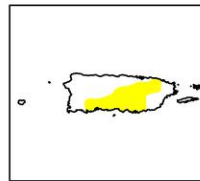
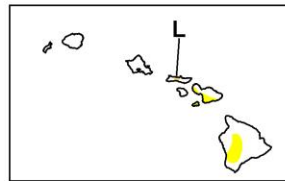
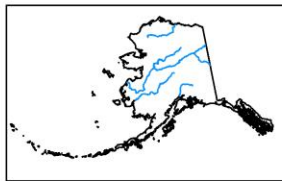
**Drought Impact Types:**

- ~ Delineates dominant impacts
- S = Short-Term, typically less than 6 months (e.g. agriculture, grasslands)
- L = Long-Term, typically greater than 6 months (e.g. hydrology, ecology)

**Intensity:**

- Yellow: D0 Abnormally Dry
- Orange: D1 Moderate Drought
- Red-Orange: D2 Severe Drought
- Red: D3 Extreme Drought
- Dark Red: D4 Exceptional Drought

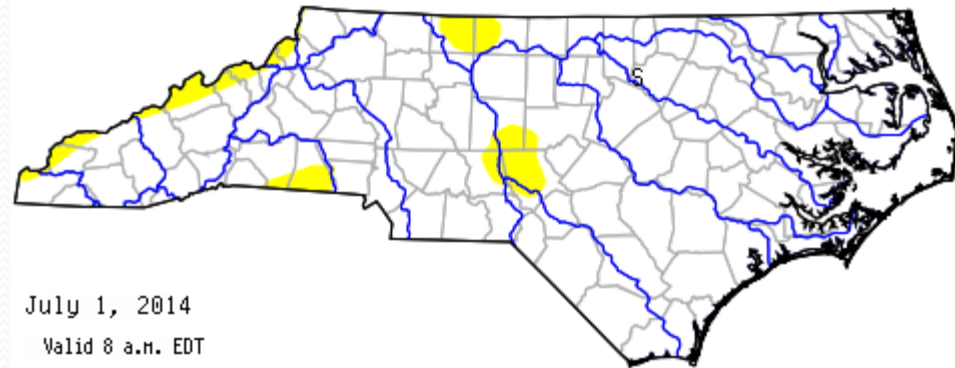
The Drought Monitor focuses on broad-scale conditions. Local conditions may vary. See accompanying text summary for forecast statements.



<http://droughtmonitor.unl.edu/>

Before

Now



June 3, 2014  
Valid 8 a.m. EDT

July 1, 2014  
Valid 8 a.m. EDT