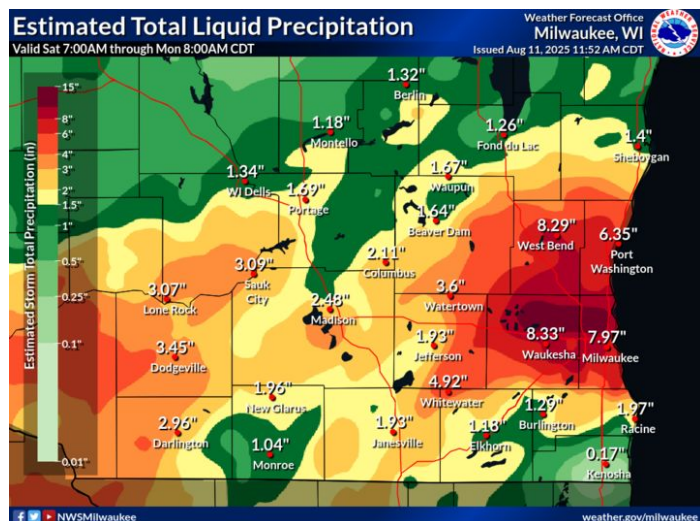


# Southeast Wisconsin Flooding

## August 9-10, 2025

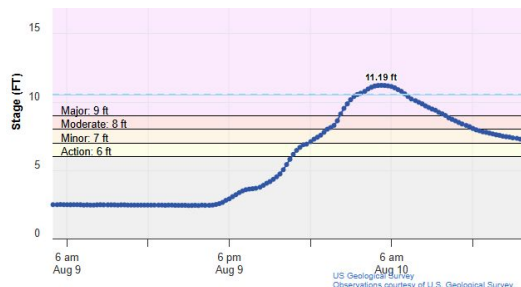


Estimated storm total rainfall. Some highly localized areas in Milwaukee and eastern Waukesha Counties received in excess of 12" of rain

**Event Setup:** A stalled frontal boundary served as the focus for thunderstorm development across southeastern Wisconsin on August 9. The presence of this front along with an extremely moist air mass (precipitable water values near 2") set the stage for extreme rainfall rates with thunderstorms.

Unfortunately, these heavy rainfall rates developed over the heart of Milwaukee and the western suburbs. As thunderstorms continued to develop over the same locations, drainage systems were quickly overwhelmed. This led to the development of flash flooding on the evening and overnight of August 9 and 10.

As water began to drain into area rivers, very rapid rises were observed in many locations. Water levels continued to rise into the day on August 10, with many rivers cresting on August 11 and 12.



Hydrograph showing rapid rises and a record crest on the Milwaukee River at Milwaukee

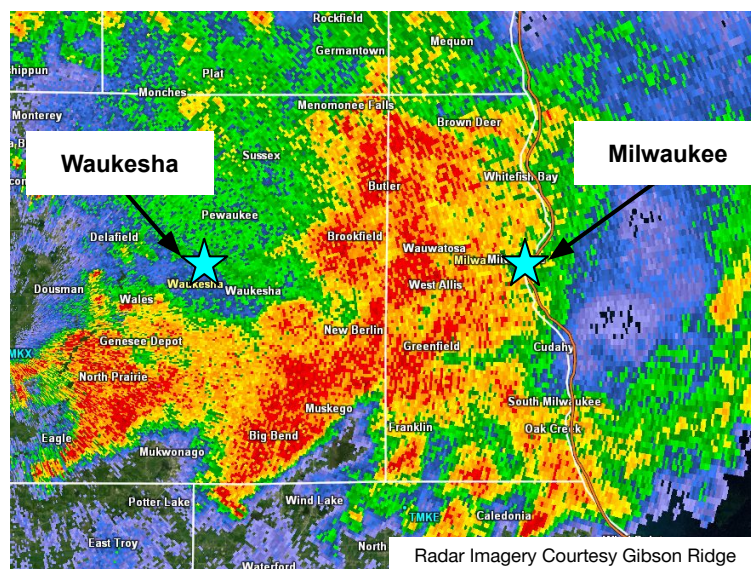


Tosa Village Flooding  
Credit: Milwaukee-Journal Sentinel

**Event Overview:** Multiple rounds of extremely heavy rain occurred on the evening of August 9 into the early morning hours of August 10. The heaviest rain focused over eastern Waukesha County and northern and western Milwaukee County, where between 10 and 13 inches of rain fell in just several hours.

This heavy rain caused significant flash flooding across much of Milwaukee and eastern Waukesha Counties, including locations like Wauwatosa, West Allis, Menomonee Falls, Elm Grove, and New Berlin. The Milwaukee, Fox, Menomonee, and Root Rivers saw rises to flood stage, with record levels observed along the Milwaukee River in Milwaukee.

11:44 PM Radar Image 8/9/2025



Radar Imagery Courtesy Gibson Ridge



Image of cars in a flooded roadway near American Family Field. Credit: Wisconsin 511.



**National Oceanic and  
Atmospheric Administration**  
U.S. Department of Commerce

# National Weather Service Milwaukee, WI