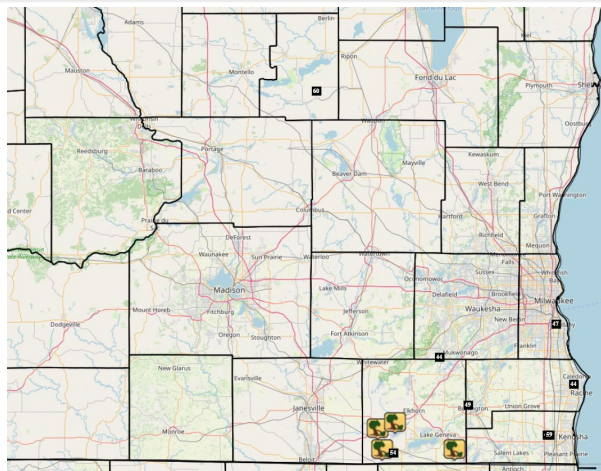




June 3, 2025 Damaging Winds

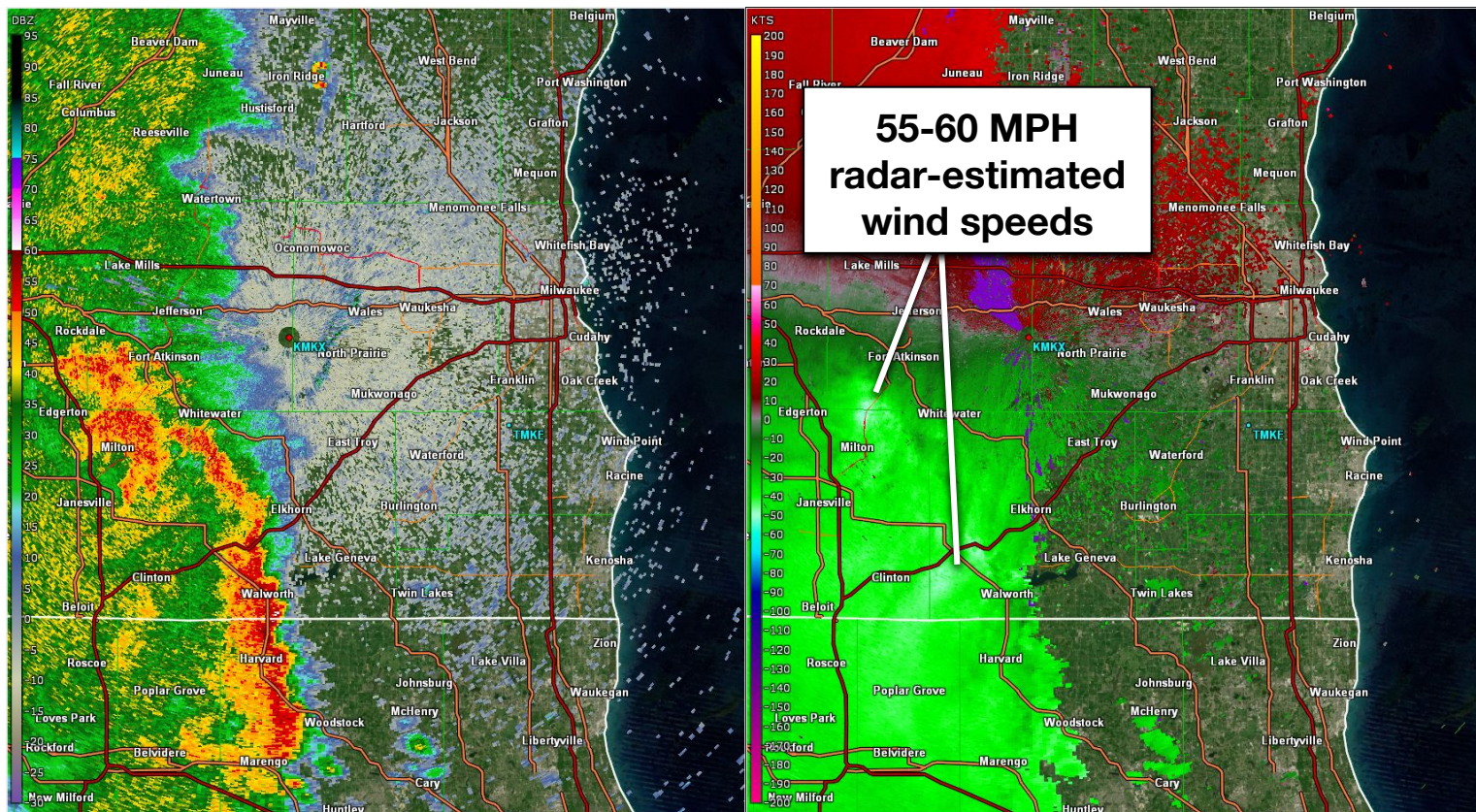
Strong T-Storms Bring Damaging Winds To Southern WI

Event Overview: Two rounds of showers and thunderstorms developed within a warm, muggy air mass across southern Wisconsin on June 3, 2025. The storms brought frequent cloud to ground lightning, torrential downpours, and gusty winds. Some of the winds approached and exceeded severe levels, prompting seven Severe Thunderstorm Warnings across portions of Sheboygan County and southeastern Wisconsin. Multiple storm reports were received in southeastern Wisconsin, where tree damage and power outages occurred. Several weather stations measured wind gusts in the 45-60 MPH range, with the highest reading of 59 MPH occurring at the Kenosha Regional Airport. Torrential downpours resulted in minor flooding across parts of the Milwaukee metro area.



Storm reports received from thunderstorms on June 3. The majority of reports focused over southeast Wisconsin.

Event Setup: Storms developed along a slow-moving cold front. Plenty of moisture & instability were in place ahead of the front, fueling storms. Sufficient wind shear allowed for strong wind gusts in some storms.



Radar image from 1:32 PM CDT, when strong to severe storms were moving into Walworth Co.

